

Model: AT/AP-C3 Browser Unit Type F		Date: 03-Apr-12	No. RD645001
Subject: Installation Procedure for Browser Unit Type F		Prepared by: Chihiro Shimaji	
From: 1st Tech Service Sect., MFP/P Tech Service Dept.			
Classification:	<input type="checkbox"/> Troubleshooting <input type="checkbox"/> Mechanical <input type="checkbox"/> Paper path <input type="checkbox"/> Product Safety	<input type="checkbox"/> Part information <input type="checkbox"/> Electrical <input type="checkbox"/> Transmit/receive <input type="checkbox"/> Other (Specification)	<input type="checkbox"/> Action required <input checked="" type="checkbox"/> Service manual revision <input type="checkbox"/> Retrofit information <input type="checkbox"/> Tier 2

Service Manual Revision

D111/D142/D143/D144

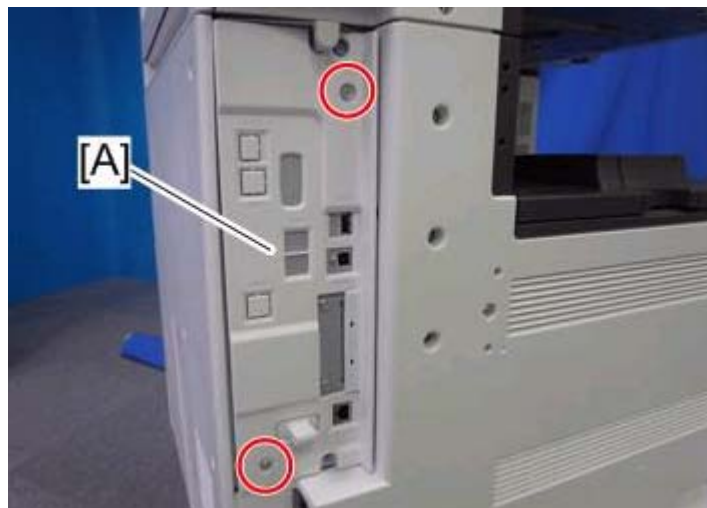
Replace the descriptions of Installation procedure of Browser Unit Type F in Service Manual with the following.

D111/D142:P.170-P.172, D143/D144:P.150-P.153

Installation Procedure for the Browser Unit Type F

Use the following procedure to install the Browser Unit Type F.

1. Turn the main switch ON.
2. Press the "User Tools/Counter" key.
3. On the touch panel, press "System Settings".
4. Turn the main switch OFF.



5. Remove the control cover [A] (screws x 2).

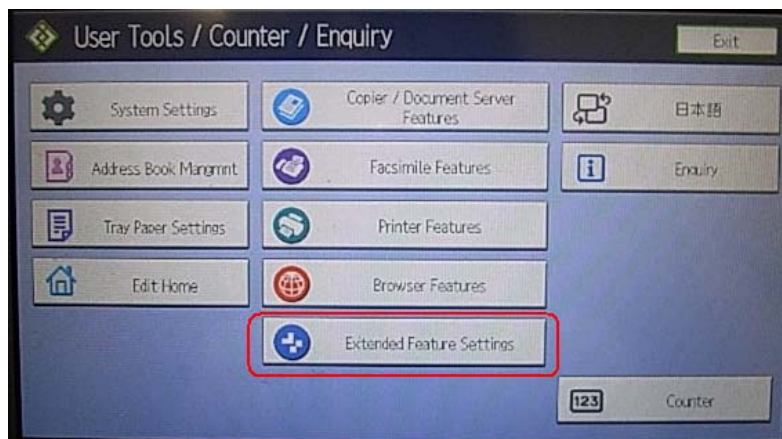
Model: AT/AP-C3 Browser Unit Type F

Date: 03-Apr-12

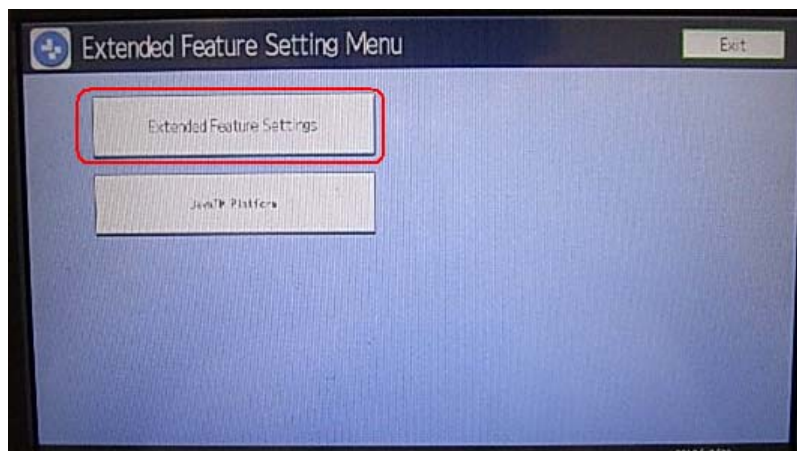
No. RD645001



6. Insert the Browser Option SD card in the lower slot [A].
7. Turn the main switch ON.
8. Touch the "User Tools/Counter" key.



9. On the touch panel, touch "Extended Feature settings".

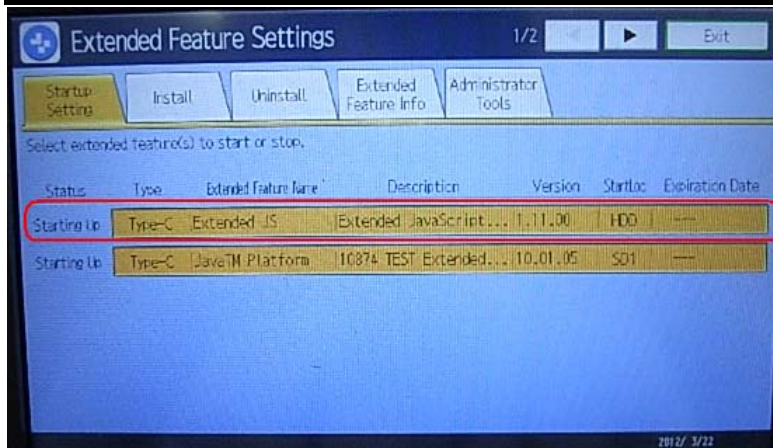


10. Touch "Extended Feature settings" in the Extended Feature Settings Menu.

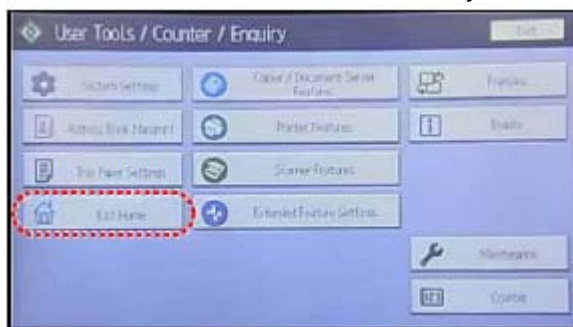
Model: AT/AP-C3 Browser Unit Type F

Date: 03-Apr-12

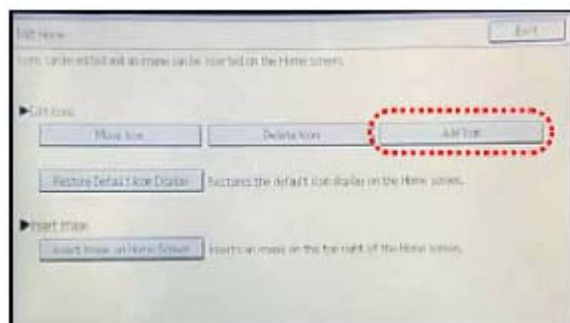
No. RD645001



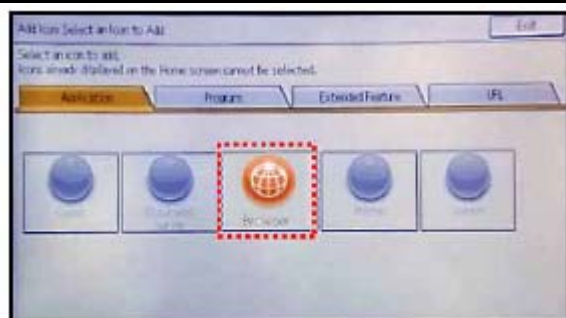
11. Make sure that “Extended JS” application was automatically installed in the Startup Settings tab.
12. Turn the main switch OFF/ON.
13. Move the application to the SD card.
Note: See the Service Manual for details.
14. Press the “User Tools/Counter” key.



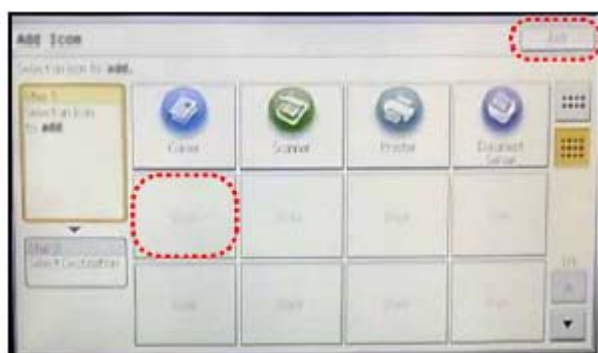
15. Touch “Edit home”.



16. Touch “Add Icon”.



17. Touch "Browse".



18. Touch a blank square to set the location for the browser icon.

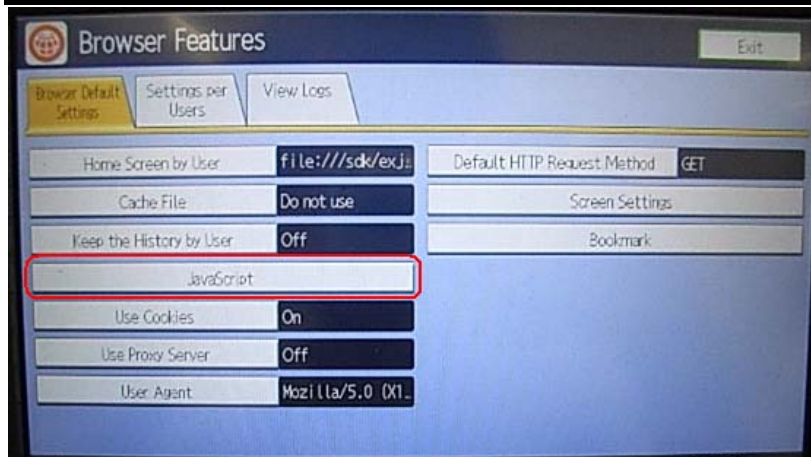
19. Touch "Exit" to complete the addition of the browser icon.

Do the following steps if the customer is using the Ricoh JavaScript connected to a Web application developed by Operius/RiDP.

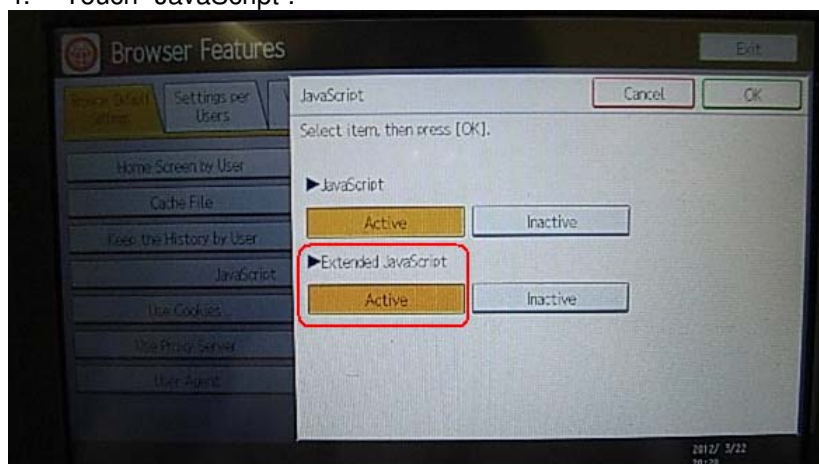
1. Turn the main switch ON.
2. Press the "User Tools/Counter" key.



3. On the touch panel, touch "Browser Features".



4. Touch "JavaScript".



5. Change the Extended JavaScript setting to "Active".

EXJS Firmware Update Procedure

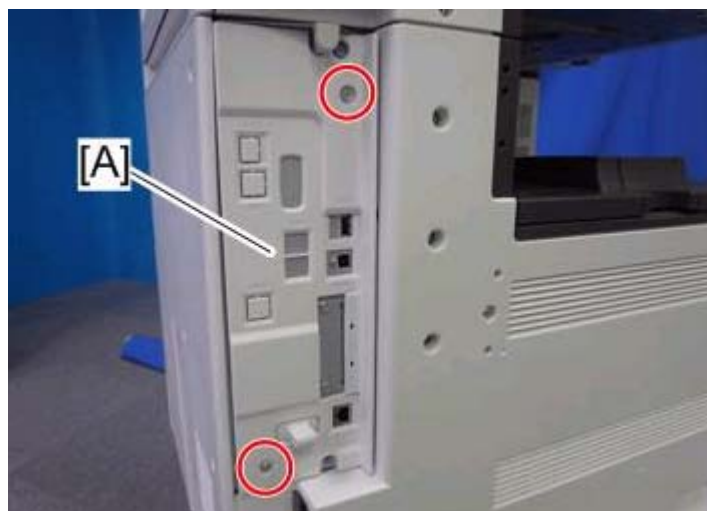
Note:

- The firmware configuration of the Browser Unit Type F has been changed to enhance browsing.
- The Browser Unit Type F consists of the Browser firmware and EXJS firmware. The EXJS firmware is equivalent to the existing browser firmware. Therefore, it is possible to update the EXJS firmware using the same procedure as that of SDK application firmware.
- Both the Browser firmware and EXJS firmware are automatically installed when the Browser SD card is inserted in the upper slot.

Preparation:

1. Download the latest EXJS firmware from the RISSN server.
2. Extract the exe file (XXXX. exe), after which the following two files are generated: XXXX_machine. exe/ XXXX_stock.exe.
Note: The file (XXXX_machine) is for updating the EXJS firmware in the field.
3. Extract the file (XXXX_machine), after which the "SDK" folder is created.
4. Copy the "SDK" folder to an SD card.

Note: XXXX = part number.

Main procedure:


1. Remove the control cover [A] (screws x 2).



2. Insert the SD card included for firmware update into the lower slot [A].
3. Turn the main switch ON.
4. After the Update screen is displayed, select the "Browser".
5. Touch "Update (#)".
6. After the "Update Done" message appears on the screen, turn the main power switch OFF.
7. Remove the SD card from the lower slot.

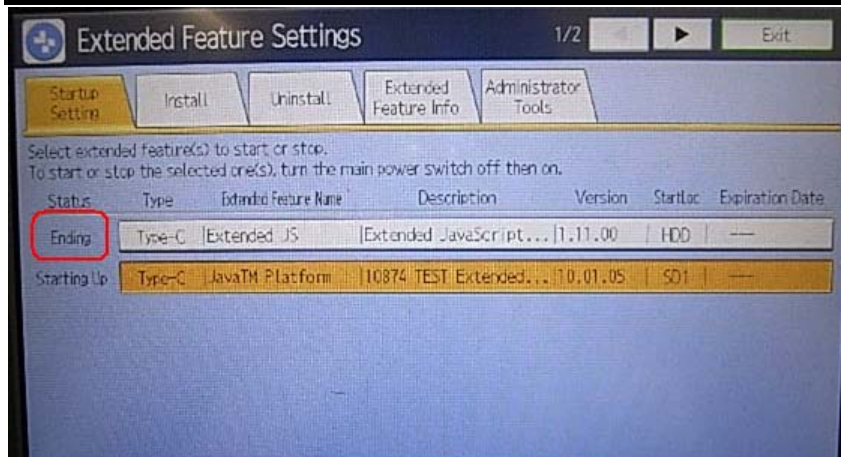
Do the following steps if you are updating the Extended JavaScript.

8. Turn the main switch ON.
9. Press the "User Tools/Counter" key.
10. On the touch panel, touch "Extended Feature settings".
11. Touch "Extended Feature settings" in the Extended Feature Settings Menu.

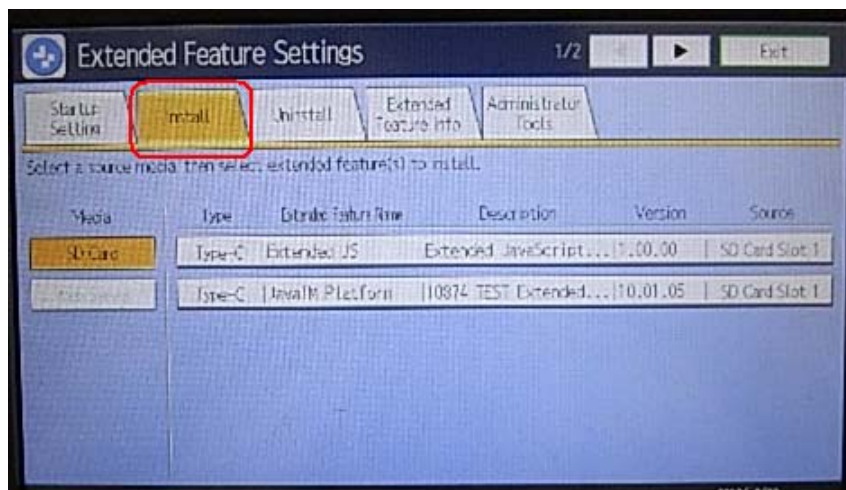
Model: AT/AP-C3 Browser Unit Type F

Date: 03-Apr-12

No. RD645001



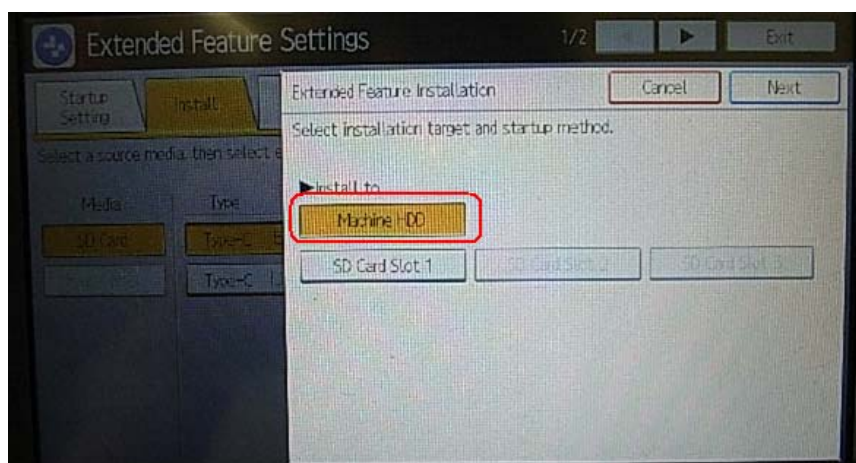
12. Change the status of "Extended JS" to "Ending" in the Startup Settings tab.
13. Turn the main switch OFF.
14. Insert the SD card containing the Extended JS firmware into the lower slot.
15. Turn the main switch ON.
16. Press the "User Tools/Counter" key.
17. On the touch panel, push "Extended Feature settings".
18. Touch "Extended Feature settings" in the Extended Feature Settings Menu.



19. Touch the "Install" tab.



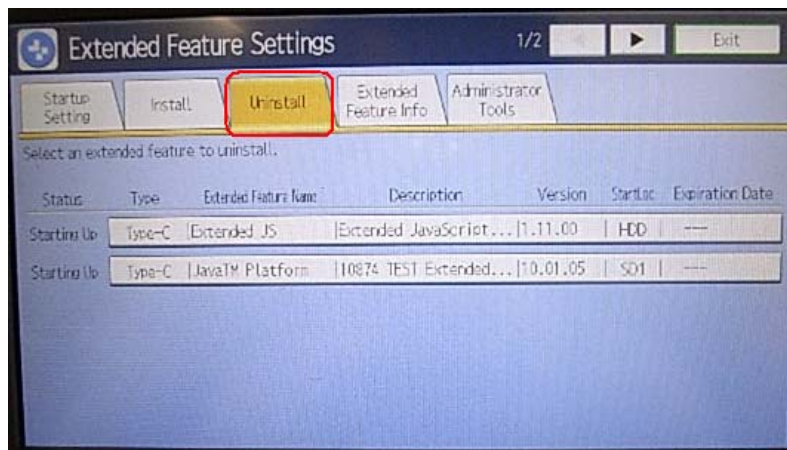
20. Touch "SD card", then select "Extended JS" from the list of Extended Features.



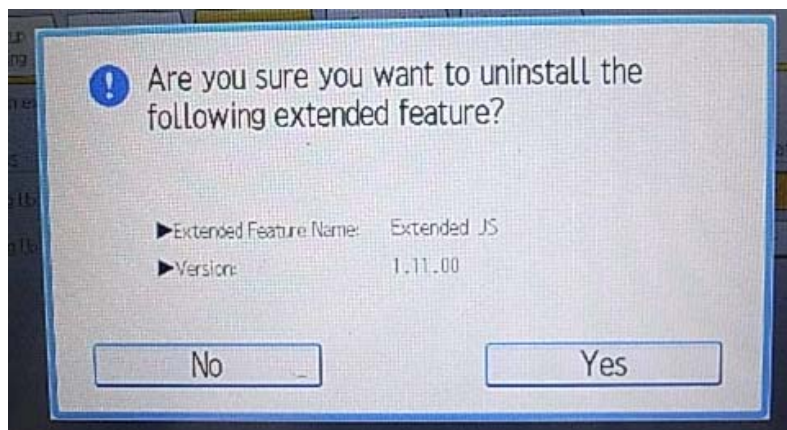
21. Select "Machine HDD" as the "Install to" destination, then touch "Next".
22. Check the Extended Features information on the "Ready to Install" screen, then press "OK".
23. After "The following extended feature has already been installed. Are you sure you want to overwrite it?" is displayed, press "Yes".
24. Change the status of Extended JS to "waiting" in the Startup Settings tab.
25. Turn the main switch OFF.
26. Remove the SD card from slot 2 (lower slot).
27. Turn the main switch ON.
28. Press the "User Tools/Counter" key.
29. On the touch panel, touch "Extended Feature settings".
30. Touch "Extended Feature settings" in the Extended Feature settings Menu.
31. Make sure that the "Extended JS" has been updated to the latest version in the Startup Settings tab.

EXJS Firmware Un-install Procedure

1. Turn the main switch ON.
2. Press the "User Tools/Counter" key.
3. Login with an administrator user name and password.
4. On the touch panel, touch "Extended Feature settings".
5. Touch "Extended Feature settings" in the Extended Feature Settings Menu.



6. Touch "Uninstall".



7. Touch "Browser" and then touch "Yes" after "Are you sure you want to uninstall the following extended feature?" is displayed.

Note: "Uninstalling the extended feature... Please wait" is then displayed on the touch screen.

8. After "Completed" is displayed, turn the main power switch OFF

Note: The Browser firmware is un-installed from the machine when the Browser SD card is removed.