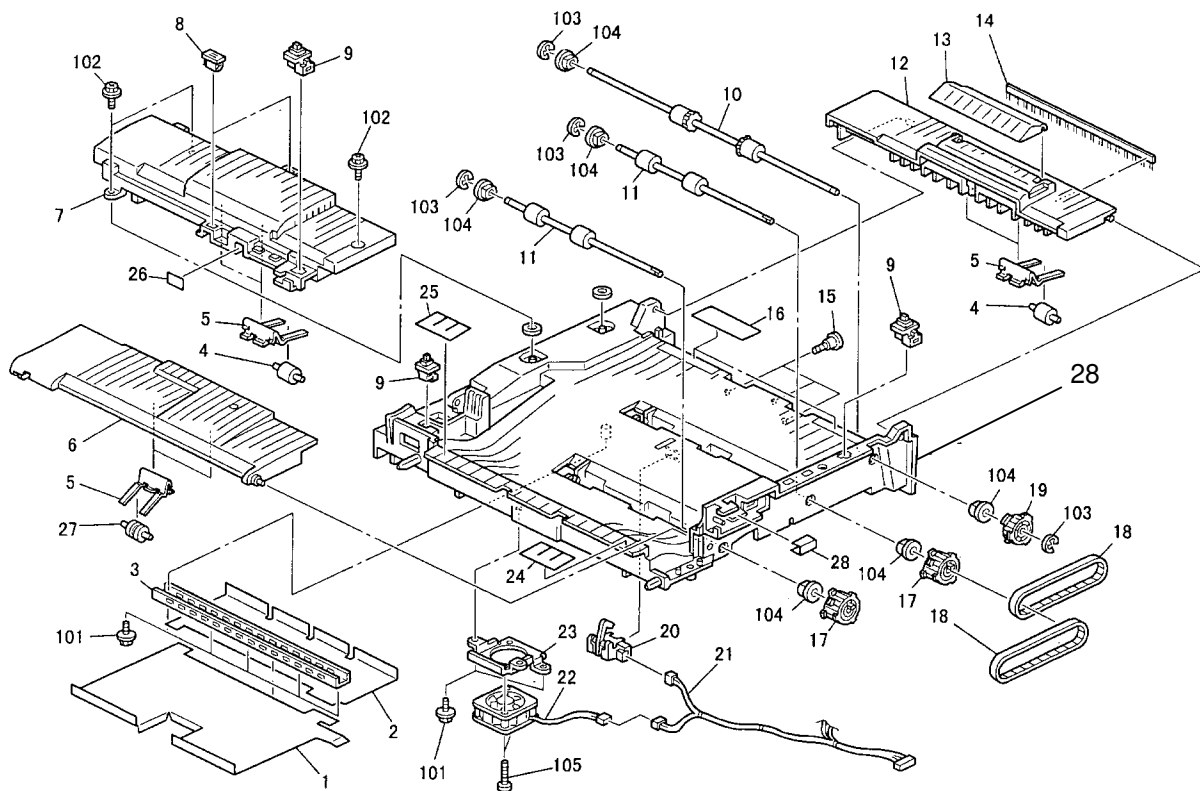


Model: NAD 30S/30/40 Bridge Unit		Date: 15-Nov-99	No.: MA688001
Modified Article: Base: Bridge Unit		Prepared by: E. Fukuyama	
From: Technical Service Dept., GTS Division			
Reason for Modification:	<input type="checkbox"/> Parts catalog correction <input type="checkbox"/> To facilitate assembly <input type="checkbox"/> Part standardization	<input type="checkbox"/> Vendor change <input type="checkbox"/> To improve reliability <input checked="" type="checkbox"/> Other	<input type="checkbox"/> To meet standards (      )

The following part has been registered as a service part.  
Please add this to your parts catalog.

Old part number	Description	Q'ty	Page	Index
A6883910	Base: Bridge Unit	1	5	28



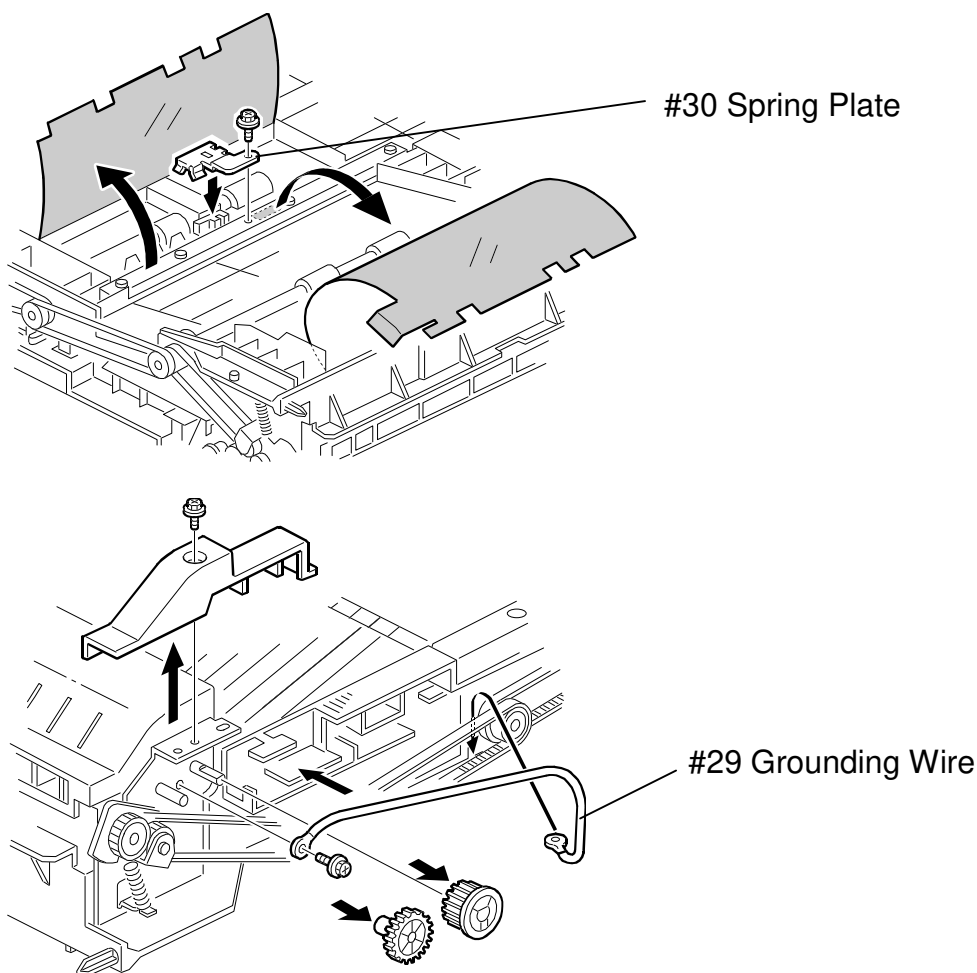
Model: NAD 30S/30/40 Bridge Unit		Date: 30-Nov-99	No.: MA688002
Modified Article: Spring Plate and Grounding Wire		Prepared by: M. Kitajima	
From: Technical Services Dept., GTS Division			
Reason for Modification:	<input type="checkbox"/> Parts catalog correction <input type="checkbox"/> To facilitate assembly <input type="checkbox"/> Part standardization	<input type="checkbox"/> Vendor change <input checked="" type="checkbox"/> To improve reliability <input type="checkbox"/> Other	<input type="checkbox"/> To meet standards (      )

Old part number	New part number	Description	Q'ty	Int	Page	Index	Note
	A2845510	Grounding Wire	0-1	-	5	*29	* New Index
	A6883914	Spring Plate	0-1	-	5	*30	* New Index

To reduce the occurrences of paper jams caused by static electricity buildup, the parts listed above have been added to the bridge unit as shown in the illustration below.

Please refer to RTB No. 45.

Unfortunately, the cut-in serial number for this modification is not available. We estimate that the modification was applied from March 1999 bridge unit production runs.

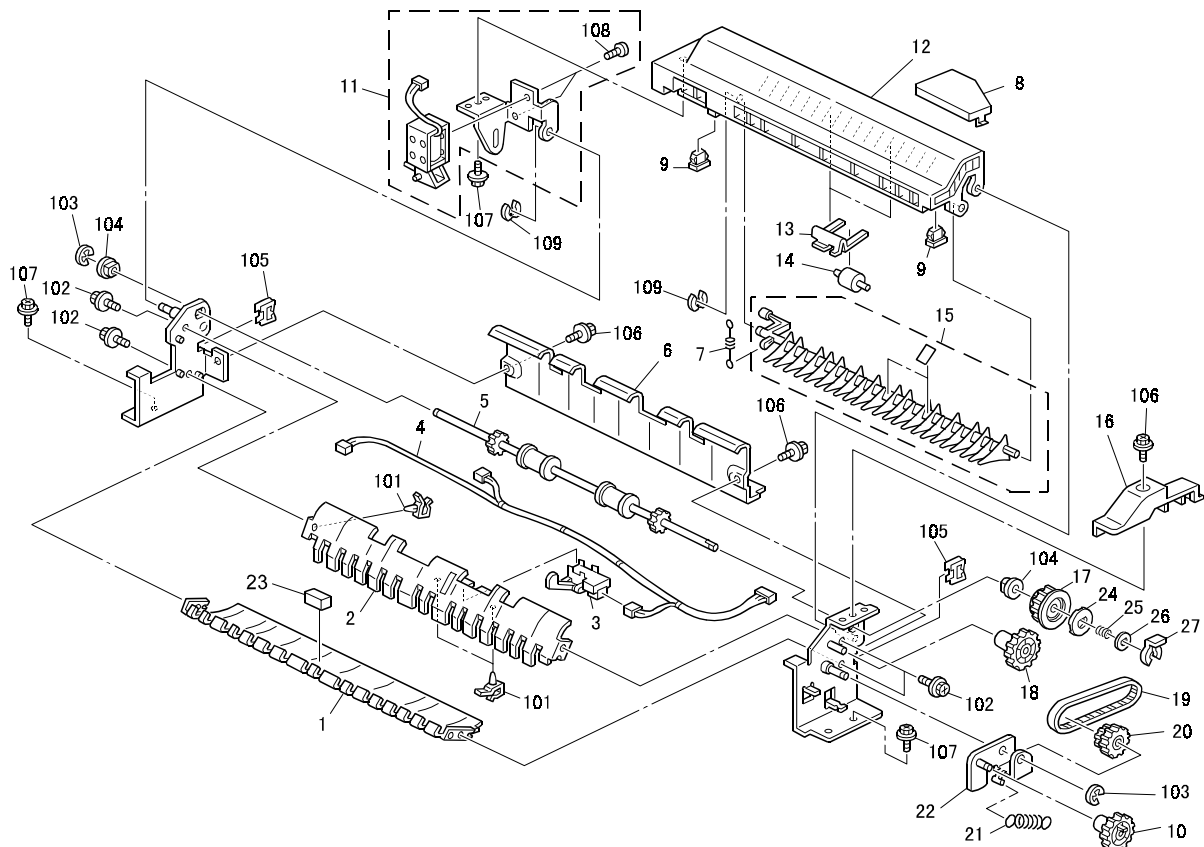


Model: NAD 30S/30/40 Bridge Unit		Date: 28-Dec-00	No.: MA688003
Modified Article: Gear - 21Z		Prepared by: E. Fukuyama	
From: Technical Services Dept., GTS Division			
Reason for Modification:	<input type="checkbox"/> Parts catalog correction <input type="checkbox"/> To facilitate assembly <input type="checkbox"/> Part standardization	<input type="checkbox"/> Vendor change <input type="checkbox"/> To improve reliability <input checked="" type="checkbox"/> Other	<input type="checkbox"/> To meet standards (      )

If an object gets caught between the exit rollers and exit cover, this can cause damage to both the object itself and the drive gear. To ensure that damage does not occur, a torque limiter has been added to the drive gear.

Old part number	New part number	Description	Q'ty	Int	Page	Index	Note
AB014056	AB014174	Gear – 21Z	1-1	X/X	3	17	*1
-	A6884473	Disk : Torque Limiter	0-1	-	3	24	*1
-	AA063332	Pressure Spring	0-1	-	3	25	*1
-	A6884474	Spacer : T=2	0-1	-	3	26	*1
-	08050097	Ring Separator	0-1	-	3	27	*1

\*1 As a set X/O from old part to new part.



## RAI Production

MODEL NAME	DESTINATION	CODE	SERIAL NO.
Bridge Unit	USA, Canada, Europe, Asia	A688-17	A7800860001