

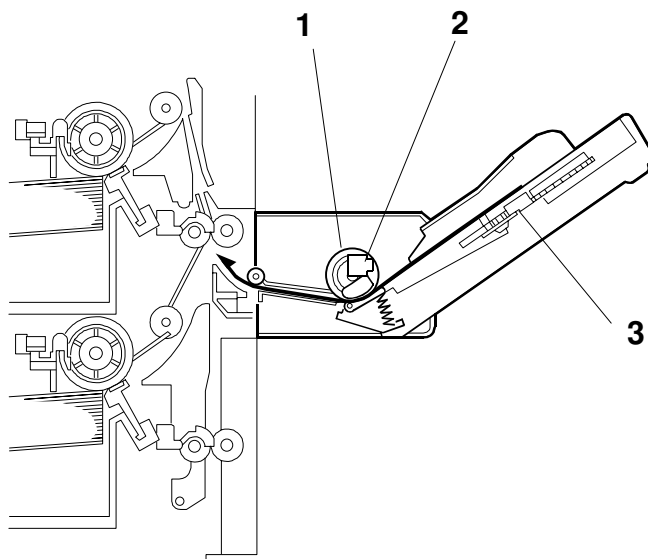
BY-PASS
(Machine Code: A899/B415)

1 OVERALL MACHINE INFORMATION

1.1 SPECIFICATIONS

Paper Size:	Standard sizes A6 lengthwise to A3 HLT lengthwise to DLT Non-standard sizes Width: 90 to 305 mm Length: 148 to 432 mm
Paper Weight:	52 g/m ² ~ 157 g/m ² , 16 lb ~ 42 lb
Tray Capacity:	50 sheets (80 g/m ² , 20 lb)
Paper Feed System:	Friction Pad Paper Feed

1.2 MECHANICAL COMPONENT LAYOUT

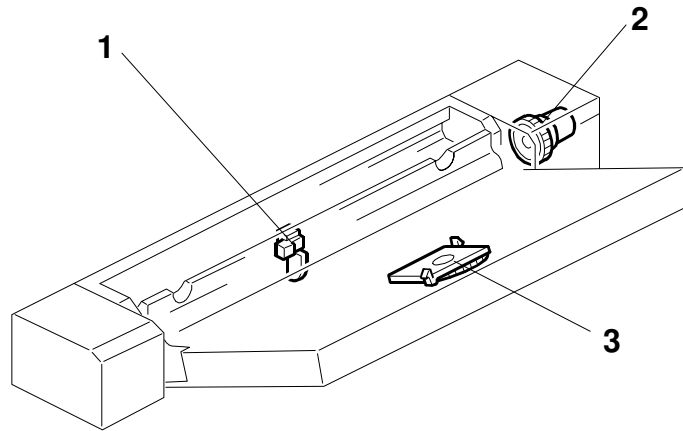


B415V500.WMF

1. Paper Feed Roller
2. Paper End Sensor
3. Paper Size Sensor Board

Options

1.3 ELECTRICAL COMPONENT LAYOUT



B415V501.WMF

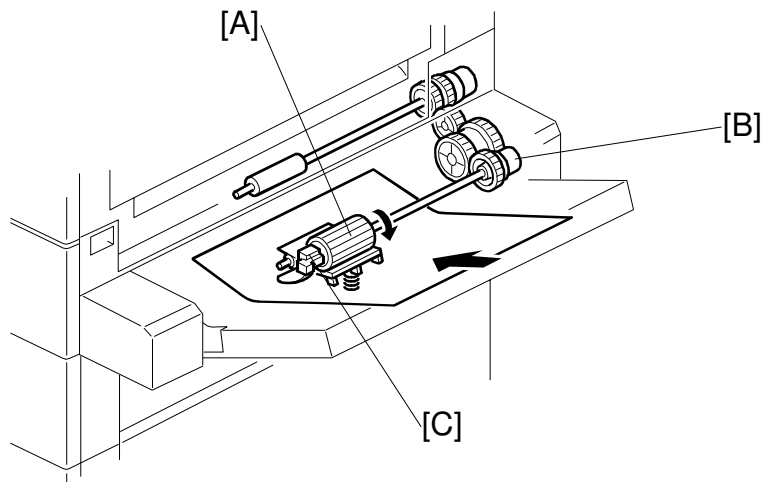
1. Paper End Sensor
2. Paper Feed Clutch
3. Paper Size Sensor Board

1.4 ELECTRICAL COMPONENT DESCRIPTION

Symbol	Name	Function	Index No.
Sensors			
S1	Paper End	Informs the copier/printer when the by-pass tray runs out of paper.	1
S2	Paper Size Sensor Board	Detects the paper width.	3
Magnetic Clutches			
MC1	Paper Feed	Starts paper feed from the by-pass tray.	2

2 DETAILED DESCRIPTIONS

2.1 BASIC OPERATION

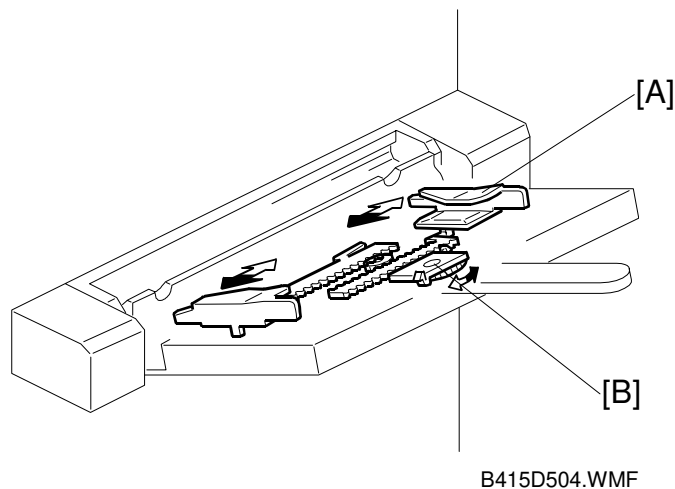


B415D503.WMF

The by-pass unit uses a friction pad paper feed mechanism. The transport roller gear in the main copier/printer drives the gear on the paper feed clutch [B] through a series of gears.

When paper is placed in the tray, the paper end sensor [C] switches off. When the Start button is pressed, the paper feed clutch [B] is activated and the paper feed roller [A] feeds the paper one sheet at a time.

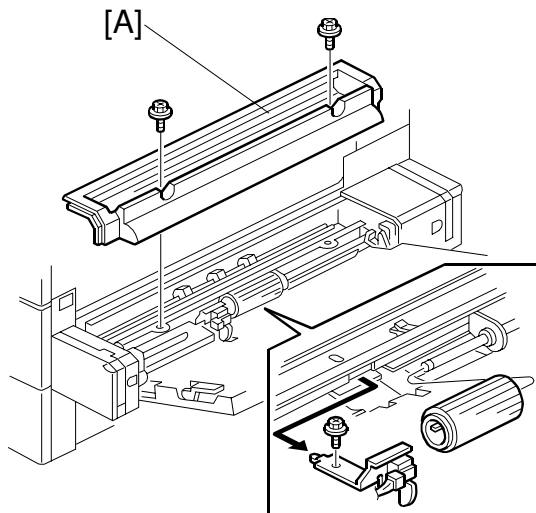
2.2 PAPER SIZE DETECTION



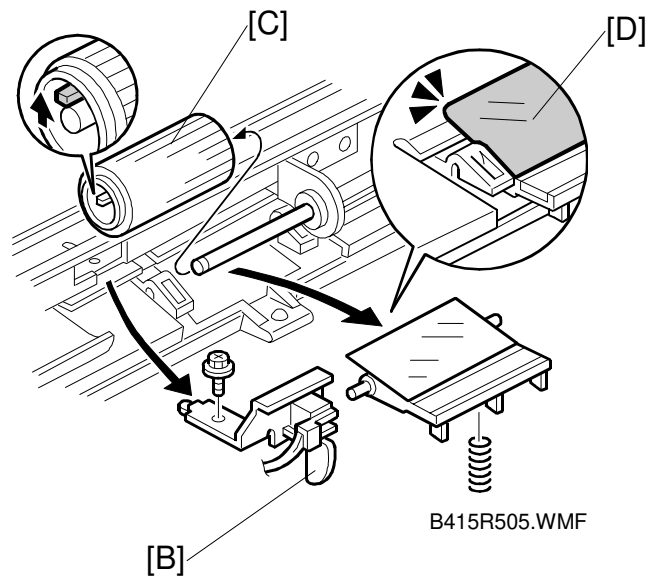
The paper size sensor board [B] monitors the paper width. The rear side fence [A] is connected to the terminal plate. The pattern for each paper width is unique. Therefore, the copier/printer determines which paper has been placed in the by-pass tray by the signal output from the board. However, the copier will not determine the paper length from the by-pass tray hardware (refer to Original Size Detection in the manual for the base copier for details on how paper length is determined).

3 REPLACEMENT AND ADJUSTMENT

3.1 PAPER FEED ROLLER/FRICTION PAD/PAPER END SENSOR



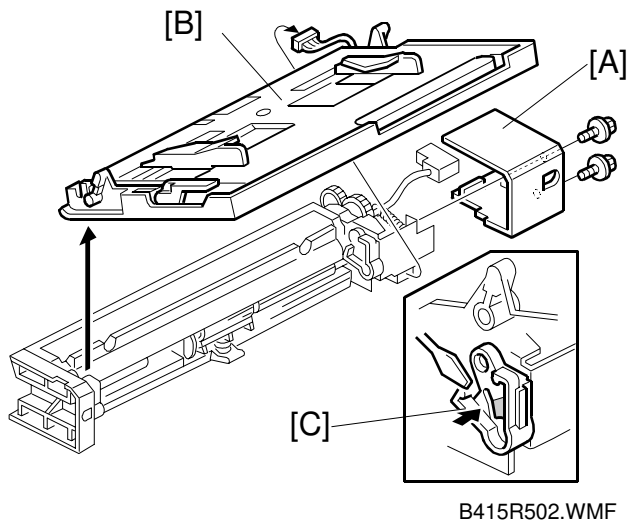
B415R501.WMF



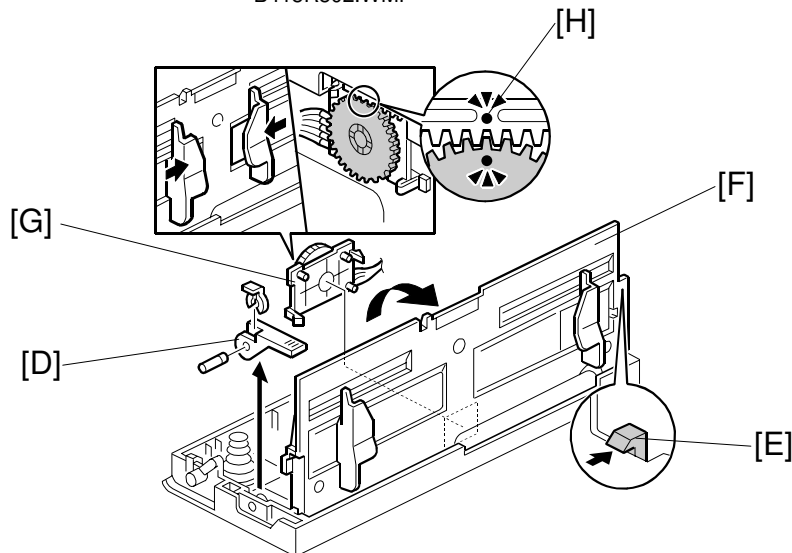
B415R505.WMF

1. Remove the upper cover [A] (2 screws).
2. Remove the paper end sensor bracket [B] (1 screw).
3. Remove the paper feed roller [C] (snap-fit).
4. If removing the friction pad [D], do so at this time.

3.2 PAPER SIZE SENSOR BOARD



B415R502.WMF

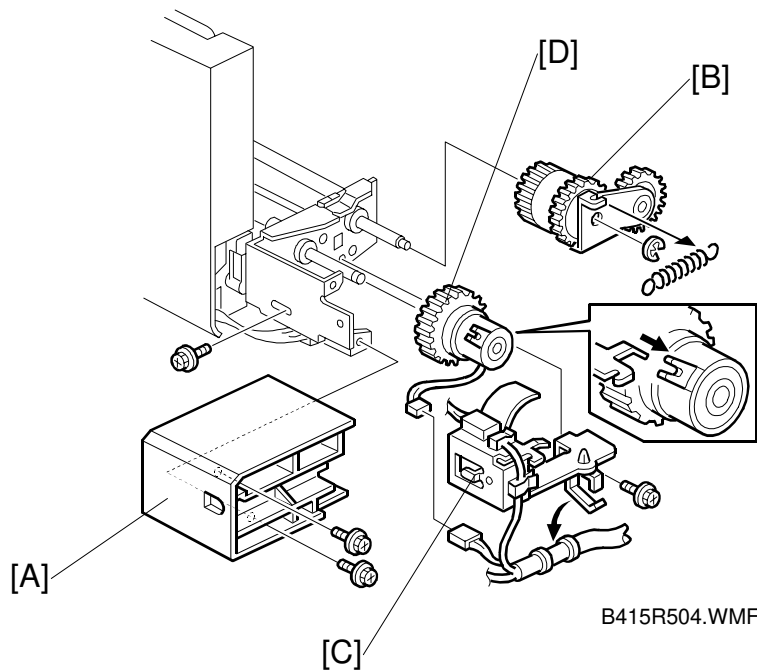


B415R503.WMF

1. Remove the rear cover [A] (2 screws).
2. Remove the by-pass tray [B] (1 connector, 2 release levers [C]).
3. Remove the lever [D] (1 snap ring, 1 pin).
4. While pushing the release lever [E], remove the paper tray [F].
5. Remove the by-pass width sensor [G].

NOTE: When installing the by-pass width sensor [G], move the side fence inward all the way so that the seal on the side face gear faces the surface with the seal [H] on the by-pass width sensor.

3.3 PAPER FEED CLUTCH



1. Remove the rear cover [A] (2 screws).
2. Remove the spring.
3. Remove the drive gear and drive gear bracket [B] (1 E-ring, 1 spring).
4. Remove the paper feed clutch bracket [C] (2 screws).
5. Remove the paper feed clutch [D] (1 connector).