

1 Bin Tray BN3060
Machine Code: D426
Field Service Manual

August 2008
Subject to change

TABLE OF CONTENTS

1. Replacement and Adjustment

Electrical Components.....	3
1-Bin Tray Exit Sensor and Paper Sensor.....	3
1-Bin Tray Control Board.....	4
LED Board.....	5



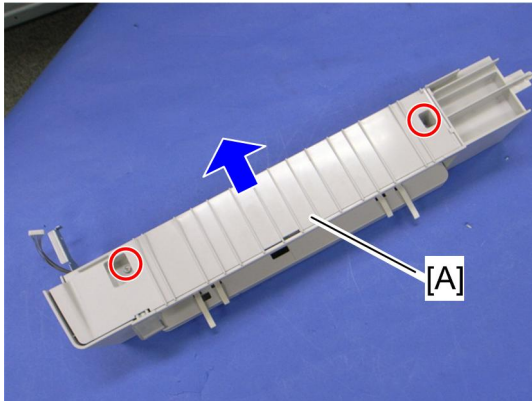
1. Replacement and Adjustment

Electrical Components

1

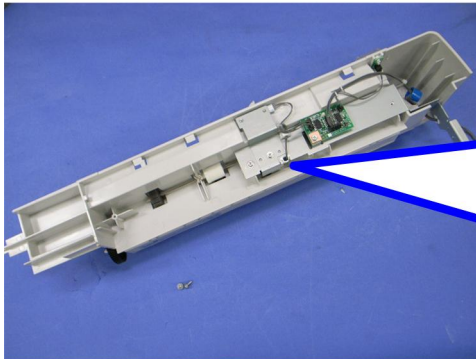
1-Bin Tray Exit Sensor and Paper Sensor

- 1-Bin tray unit

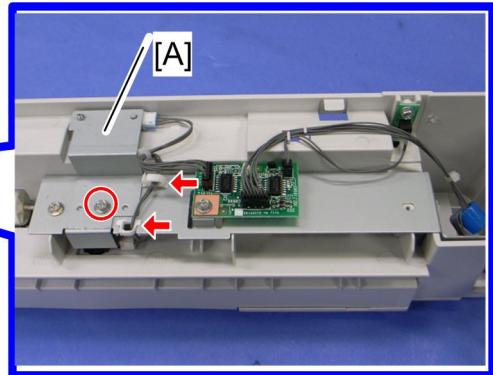


d426r501

- 1-bin tray bottom cover [A] (⚙️ x 2)

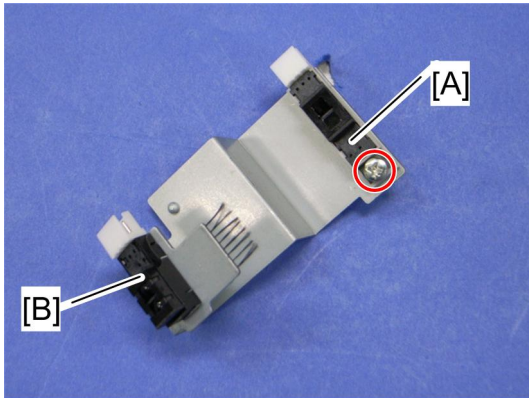


d426r502



d426r503

- Sensor assembly [A] (⚙️ x 1, ⚙️ x 2, ⚙️ x 2)



d426r504

4. Sensors;

- [A]: Paper sensor (🔧 x 1)
- [B]: 1-bin tray exit sensor (hooks)

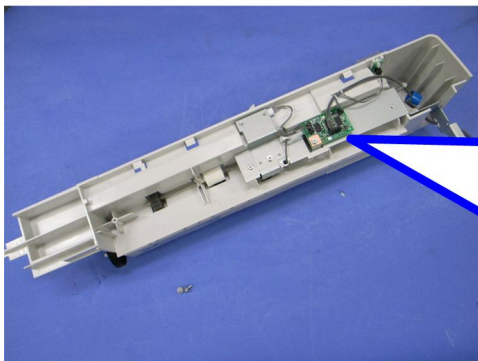
When reinstalling these sensors

Both sensors have a 3-pin connector. Be careful to connect the correct harnesses from the 1-bin tray control board to each sensor.

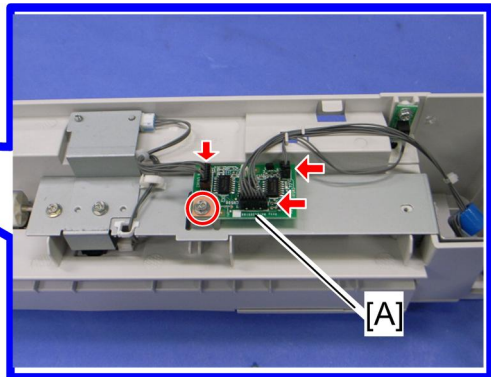
- The blue connector from the 1-bin tray control board must be connected to the paper sensor.
- The white connector from the 1-bin tray control board must be connected to the 1-bin tray exit sensor.

1-Bin Tray Control Board

1. 1-bin tray unit
2. 1-bin tray bottom cover (🔧 1-Bin Tray Exit Sensor and Paper Sensor)



d426r502a

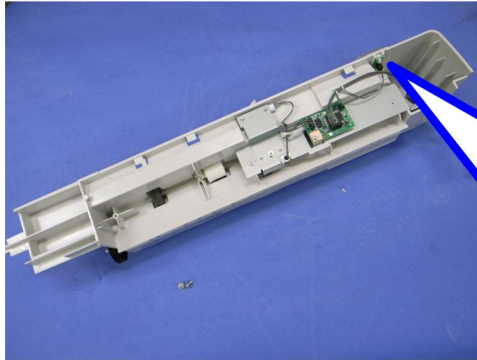


d426r503a

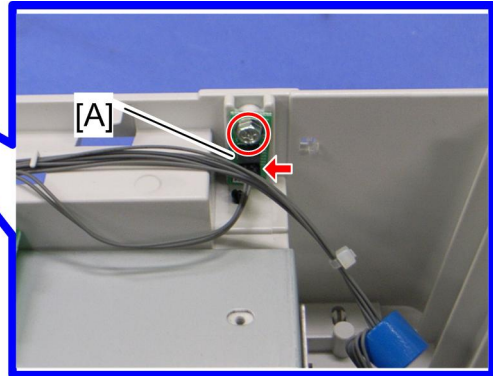
3. 1-bin tray control board [A] (🔧 x 1, 📏 x 3)

LED Board

1. 1-bin tray unit
2. 1-bin tray bottom cover (1-Bin Tray Exit Sensor and Paper Sensor)



d426r502a



d426r505

3. LED board (1, 1)

MEMO

MEMO

MEMO