




1 Bin Tray BN1020
Machine Code: D574
Field Service Manual

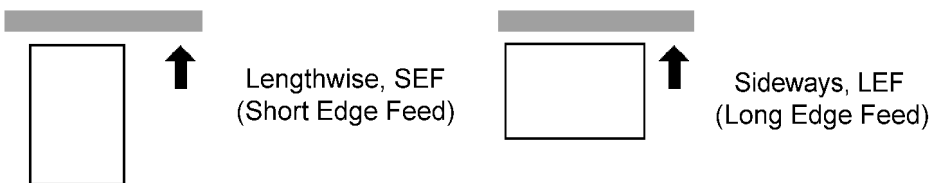
August, 2015
Subject to change

Symbols, Abbreviations and Trademarks

Conventions Used in This Manual

This manual uses several symbols.

Symbol	What it means
	Screw
	Connector
	Clamp



Cautions, Notes, etc.

The following headings provide special information:

WARNING

- Failure to obey warning information could result in serious injury or death.

CAUTION

- Obey these guidelines to ensure safe operation and prevent minor injuries.

Important

- Obey these guidelines to avoid problems such as misfeeds, damage to originals, loss of valuable data and to prevent damage to the machine.
- Always obey these guidelines to avoid serious problems such as misfeeds, damage to originals, loss of valuable data and to prevent damage to the machine. **bold** is added for emphasis.

Note

- This document provides tips and advice about how to best service the machine.

Trademarks

Microsoft[®], Windows[®], and MS-DOS[®] are registered trademarks of Microsoft Corporation in the United States and /or other countries.

PostScript[®] is a registered trademark of Adobe Systems, Incorporated.

PCL[®] is a registered trademark of Hewlett-Packard Company.

Ethernet[®] is a registered trademark of Xerox Corporation.

PowerPC[®] is a registered trademark of International Business Machines Corporation.

Other product names used herein are for identification purposes only and may be trademarks of their respective companies. We disclaim any and all rights involved with those marks.

TABLE OF CONTENTS

Symbols, Abbreviations and Trademarks.....	1
Conventions Used in This Manual.....	1
Cautions, Notes, etc.....	1
Trademarks.....	2

1. Replacement and Adjustment

Beforehand.....	5
Electrical Components.....	6
Paper Sensor.....	6
Paper Exit Sensor.....	7
LED Board.....	8

1. Replacement and Adjustment

Beforehand

1

CAUTION

- Before installing options, please do the following:
If there is a fax unit in the machine, print out all messages stored in the memory, the lists of user-programmed items, and the system parameter list.
If there are printer jobs in the machine, print out all jobs in the printer buffer.
Turn off the main switch and disconnect the power cord, the telephone line, and the network cable.

Important

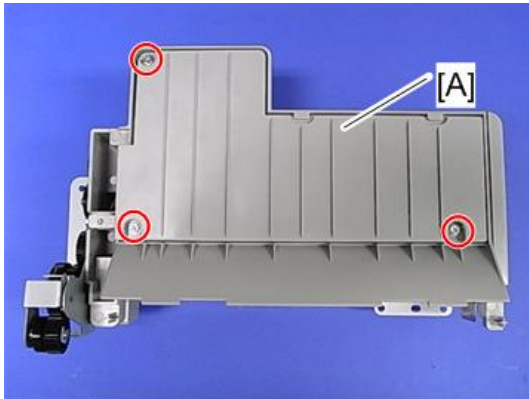
- Always touch a grounded surface to discharge static electricity from your hands before you handle SD cards, printed circuit boards, or memory boards.

Electrical Components

1

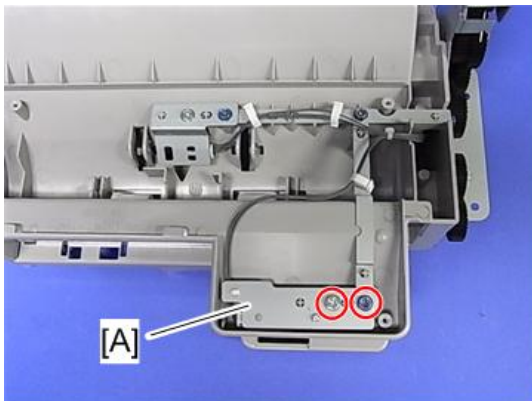
Paper Sensor

1. 1-Bin tray unit (See “1-Bin Tray BN1010” in the mainframe service manual)
2. 1-Bin tray upper cover [A] (⌀ × 3)



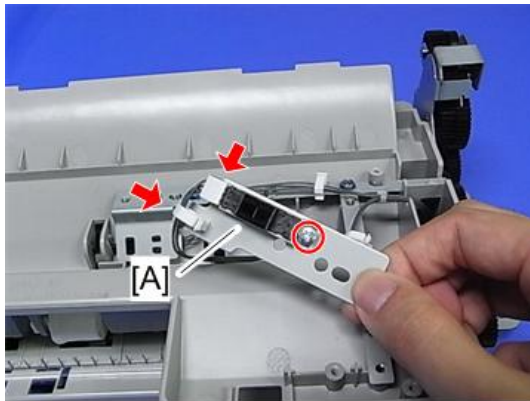
d574r503

3. Paper sensor bracket [A] (⌀ × 2)



d574r501

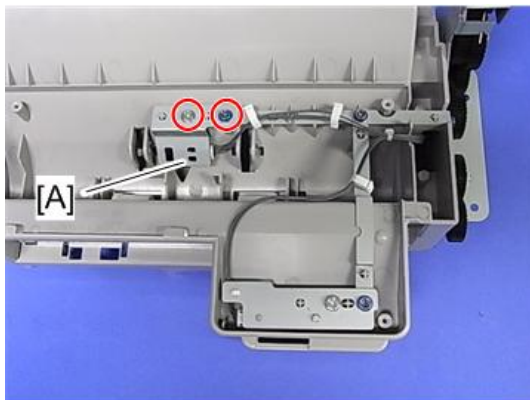
4. Paper sensor [A] (⌚ × 1, 📄 × 1, 📏 × 1)



d574r502

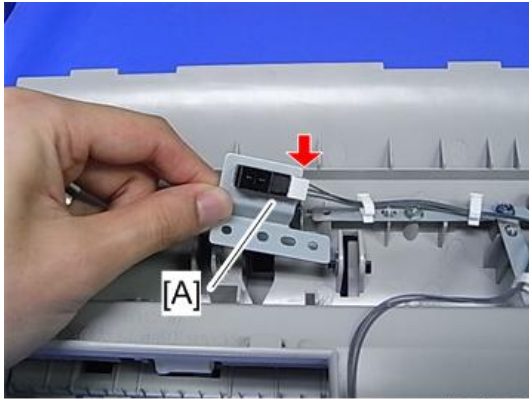
Paper Exit Sensor

1. 1-Bin tray unit (See "1-Bin Tray BN1010" in the mainframe service manual)
2. 1-Bin tray upper cover (page 6)
3. Paper exit sensor bracket [A] (⌚ × 2)



d574r504

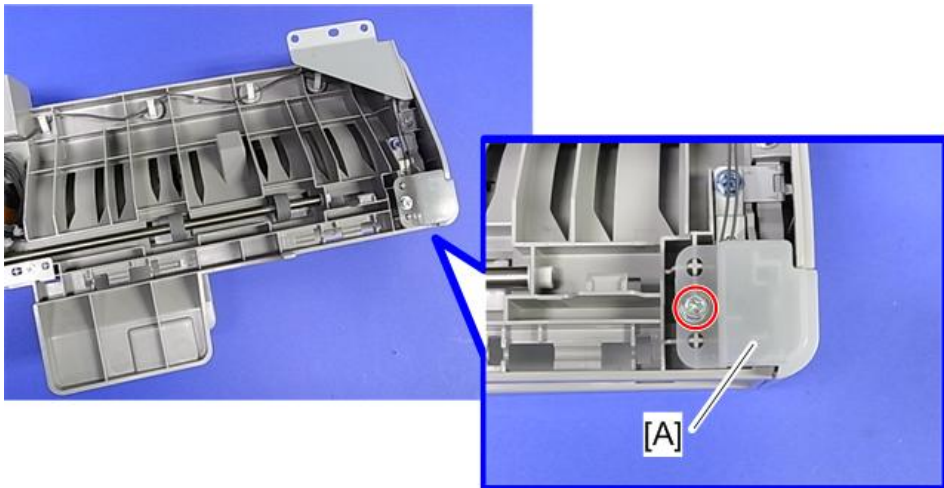
4. Paper exit sensor [A] (🔧 × 1, hooks)



d574r505

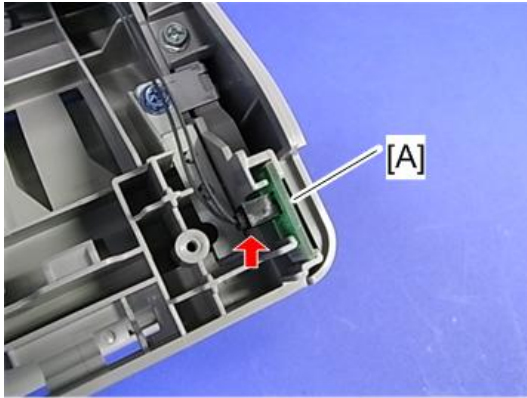
LED Board

1. 1-Bin tray unit (See "1-Bin Tray BN1010" in the mainframe service manual)
2. LED board cover [A] (🔧 × 1)



d574r506

3. LED board [A] (× 1)



d574r507

MEMO

MEMO

MEMO