

Model: Triton-C1 Duplex Unit (AD470)		Date: 28-Oct-04	No.: MB726001
Modified Article: Wall & Gear		Prepared by: M. Tsuyuki	
From: 1st Tech. Support Sec. Service Support Dept.			
Reason for Modification:	<input checked="" type="checkbox"/> Parts catalog correction <input type="checkbox"/> To facilitate assembly <input type="checkbox"/> Part standardization	<input type="checkbox"/> Vendor change <input type="checkbox"/> To improve reliability <input type="checkbox"/> Other	<input type="checkbox"/> To meet standards ()

Please correct your parts catalog as follows:

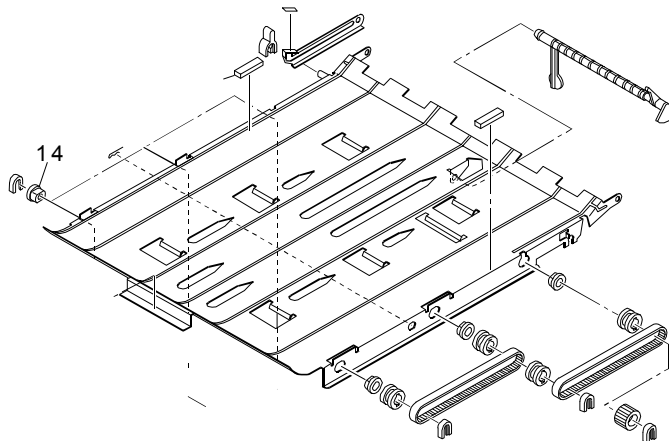
Old part number	New part number	Description	Q'ty	Int	Page	Index
B7261010	B7267510	Wall(4402290800) Wall(4402908000)	1	X/O	3	9
B7262069	B7267669	GEAR(4402291060)	1	X/O	5	3

Model: Triton-C1 Duplex Unit (AD470)		Date: 2-Aug-05	No.: MB726002
Modified Article: Plastic Brush		Prepared by: M. Tsuyuki	
From: 1st Tech. Support Sec. Service Support Dept.			
Reason for Modification:	<input checked="" type="checkbox"/> Parts catalog correction <input type="checkbox"/> To facilitate assembly <input type="checkbox"/> Part standardization	<input type="checkbox"/> Vendor change <input type="checkbox"/> To improve reliability <input type="checkbox"/> Other	<input type="checkbox"/> To meet standards ()

Change/Reason: The Parts Catalog was corrected as follows.

Old part number	New part number	Description	Q'ty	Int	Page	Index
B7262114	B7262214	Plastic Brush (4402294980) Plastic Brush (4407734980)	1		7	14

3.DRIVE SECTION 2



Reissued: 4-Oct-05

Model: Triton-C1 Duplex Unit (AD470)	Date: 2-Aug-05	No.: MB726002a
--------------------------------------	----------------	----------------

MB Correction

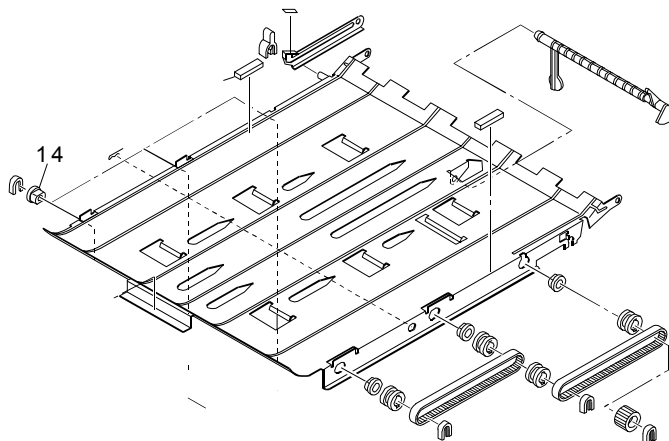
The items in bold italics have been corrected or added.

Modified Article: Plastic Brush		Prepared by: M. Tsuyuki	
From: 1st Tech. Support Sec. Service Support Dept.			
Reason for Modification:	<input checked="" type="checkbox"/> Parts catalog correction	<input type="checkbox"/> Vendor change	<input type="checkbox"/> To meet standards ()
	<input type="checkbox"/> To facilitate assembly	<input type="checkbox"/> To improve reliability	
	<input type="checkbox"/> Part standardization	<input type="checkbox"/> Other	

Change/Reason: The Parts Catalog was corrected as follows.

Old part number	New part number	Description	Q'ty	Int	Page	Index
B7262114	B7262214	<i>Plastic Bush</i> (4402294980) <i>Plastic Bush</i> (4407734980)	<i>1→3</i>		7	14

3.DRIVE SECTION 2





Part Change Information List

Date: April 30, 2010

Model	Code	PCIL Nr.	PCIL Correction	Old part number	New part number	Description	Old Q'ty	New Q'ty	Int	3DPC	Page	Index	Set	Set Int	RTB	Note	Ref. Nr.	ECN Nr.
TR-C1 Duplex unit (AD470)	B726	201004		B7211052	B7219752	SCREW M4X8 (X0-02577000)	3	3	O/O		7	47					V0903228	



Part Change Information List

Date: May 31, 2010

Model	Code	PCIL Nr.	PCIL Correction	Old part number	New part number	Description	Old Q'ty	New Q'ty	Int	3DPC	Page	Index	Set	Set Int	RTB	Note	Ref. Nr.	ECN Nr.
TR-C1 Duplex unit (AD470)	B726	201005		B1867009	B1869716	TAPPING SCREW - M3X6(X0-02592000)	13	13	O/O		3	35					V1000195	
TR-C1 Duplex unit (AD470)	B726	201005		B1867009	B1869716	TAPPING SCREW - M3X6(X0-02592000)	13	13	O/O		5	69					V1000195	