

**DUPLEX UNIT**  
**Machine Code: G893**

**SERVICE MANUAL**

December 15th 2006  
Subject to change

# TABLE OF CONTENTS

## 1. Replacement and Adjustment

Covers.....	3
Duplex Board and Sensors.....	4
Inverter Motor.....	5

## 2. Detailed Descriptions

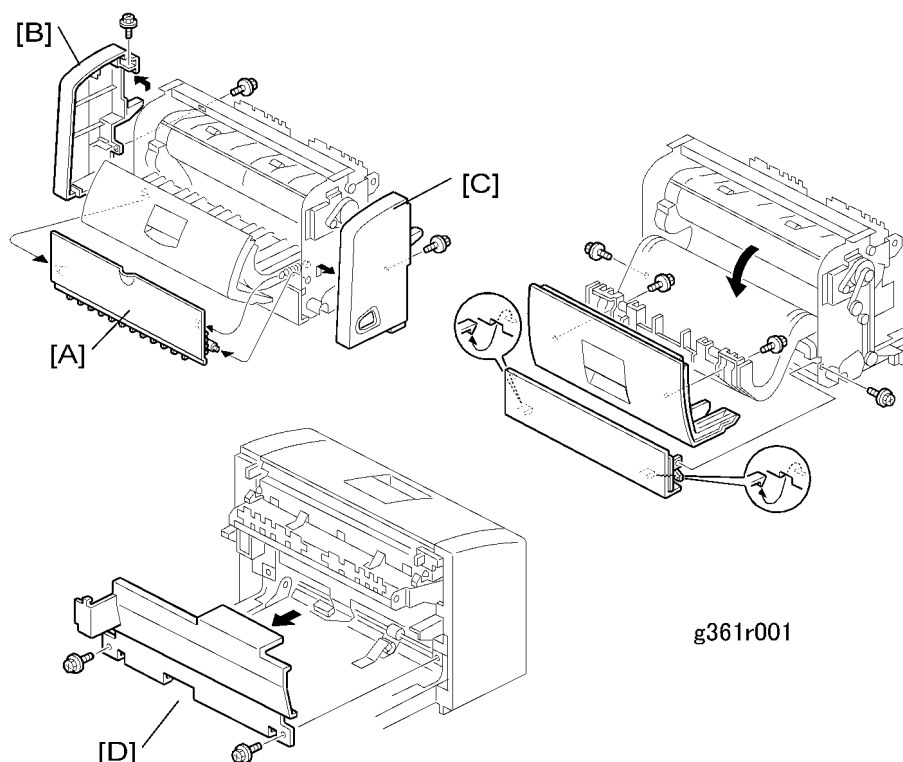
Overview.....	7
Mechanical Components.....	7
Drive Components.....	8
Electrical Components .....	8
Duplexing.....	10
A4 LEF/LT LEF and Longer Paper.....	10
Paper Smaller Than A4 LEF/LT LEF.....	10
Feed In and Exit Mechanism.....	12
Safety Fuse.....	13



# 1. Replacement and Adjustment

## Covers

1



### CAUTION

- Turn off the main power switch and unplug the machine before attempting any of the procedures in this section.
- Remove the duplex unit from the main unit.
- Open the upper cover [A]

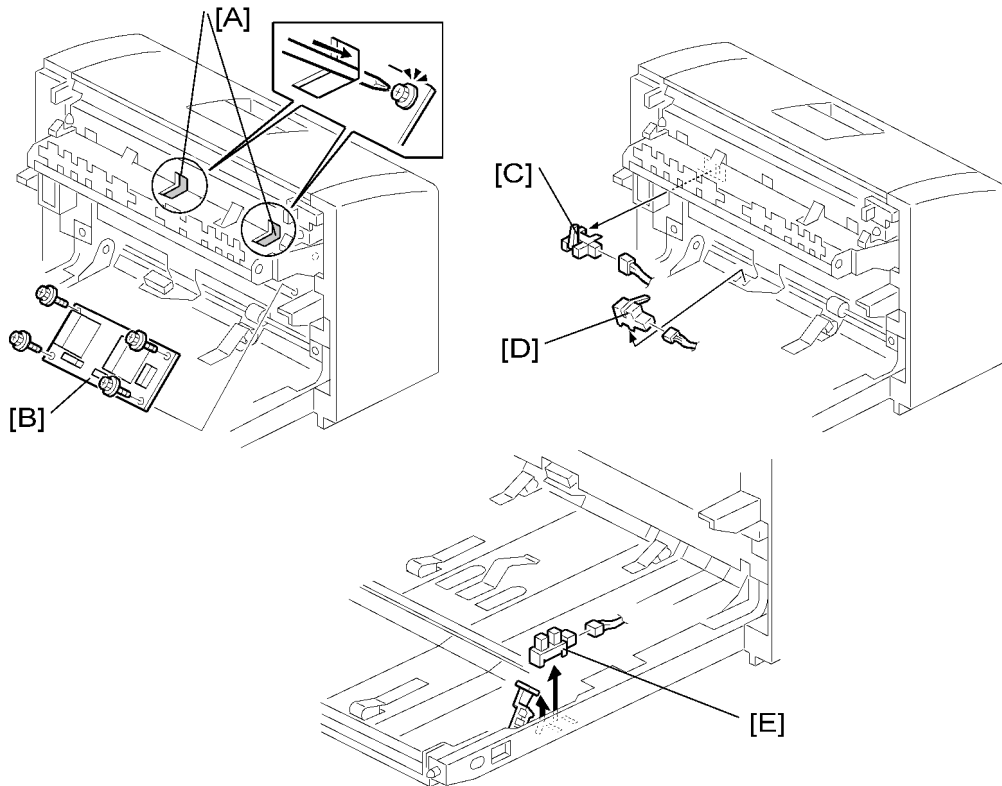
[A] Upper cover (  x 2)

[B] Right cover (  x 2)

[C] Left cover (  x 1)

[D] Front cover (  x 2)

## Duplex Board and Sensors



g361r102

- Remove front cover (see previous section).

[A] Duplex board bracket (🔩 x2)

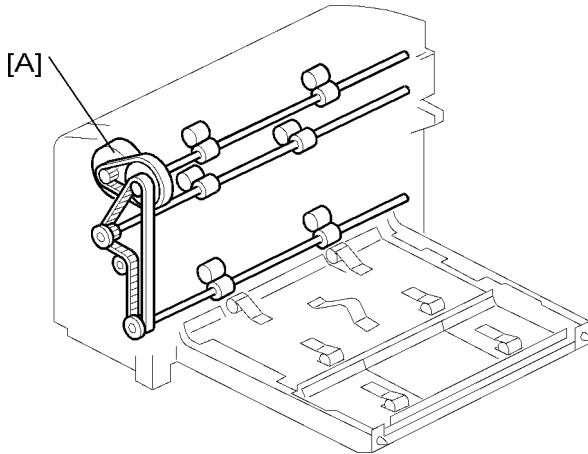
[B] Duplex board (🔩 x4)

[C] Inverter sensor (🔩 x1)

[D] Entrance sensor (🔩 x1)

[E] Exit sensor (🔩 x1)

# Inverter Motor



g361d002

## ★ Important

- Remove the motor bracket before removing the inverter motor.

[A] Inverter motor (Timing belts x2, Ⓒ x1, Gear x1)

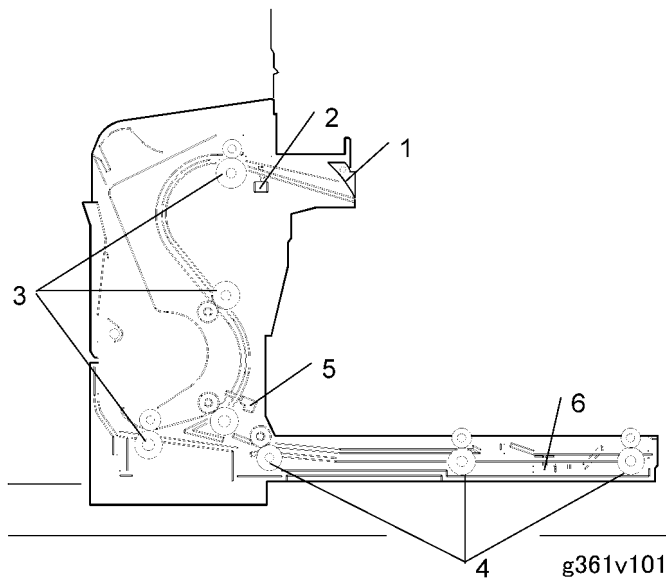


## 2. Detailed Descriptions

### Overview

#### Mechanical Components

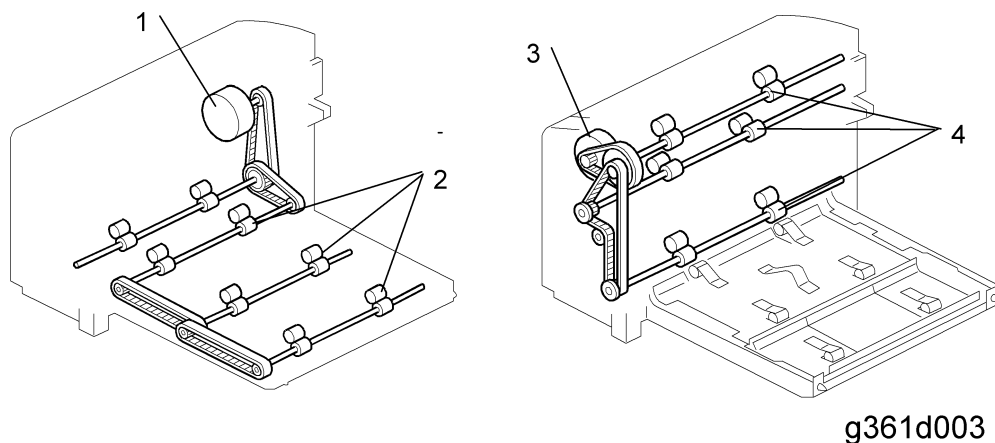
2



1. Junction gate
2. Entrance sensor
3. Inverter rollers
4. Transport rollers
5. Transport sensor
6. Exit sensor

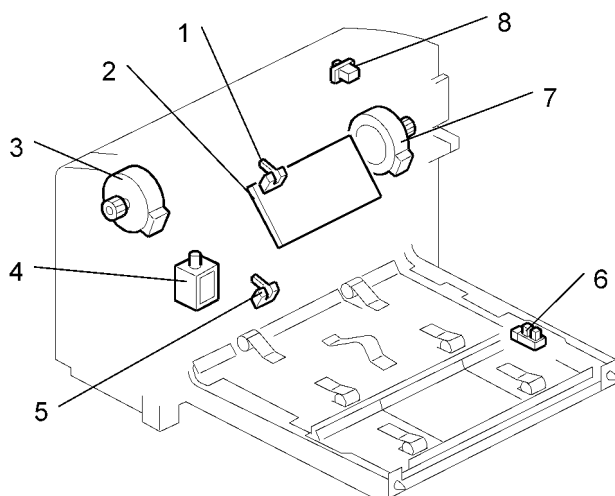


## Drive Components



1. Transport motor
2. Transport rollers
3. Inverter motor
4. Inverter rollers

## Electrical Components



1. Entrance sensor

2. Duplex board
3. Inverter motor
4. Junction gate solenoid
5. Inverter sensor
6. Exit sensor
7. Transport motor
8. Cover switch

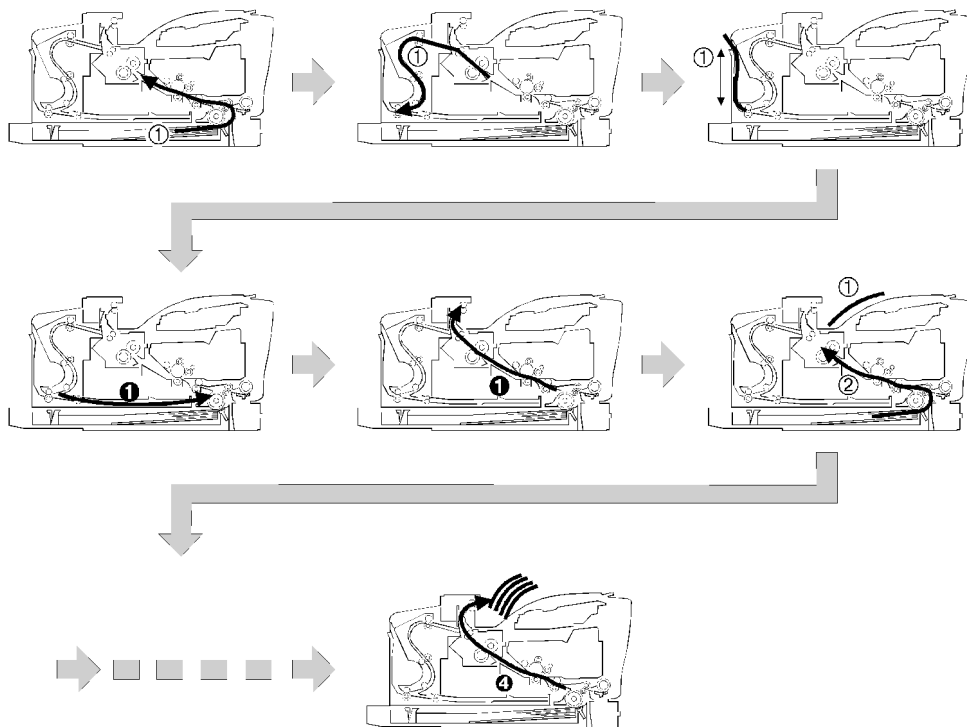
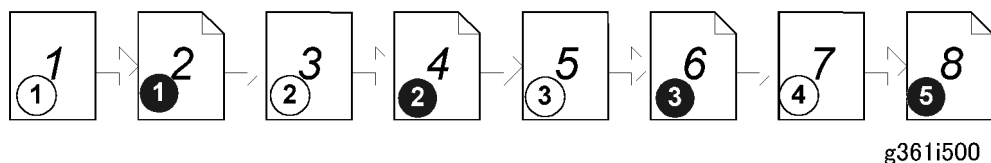
## Duplexing

### A4 LEF/LT LEF and Longer Paper

2

The duplex unit can store only one sheet of paper.

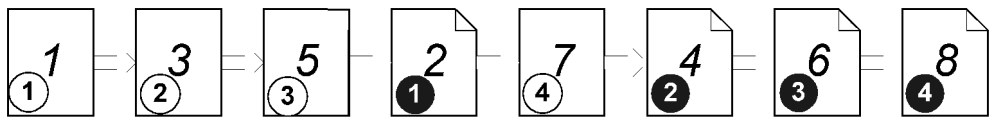
**Example: 8 pages.** The center number (not circled) in the illustration shows the page order in the job. The circled numbers show the printing order (white circles: 1st side, black circles: 2nd side).



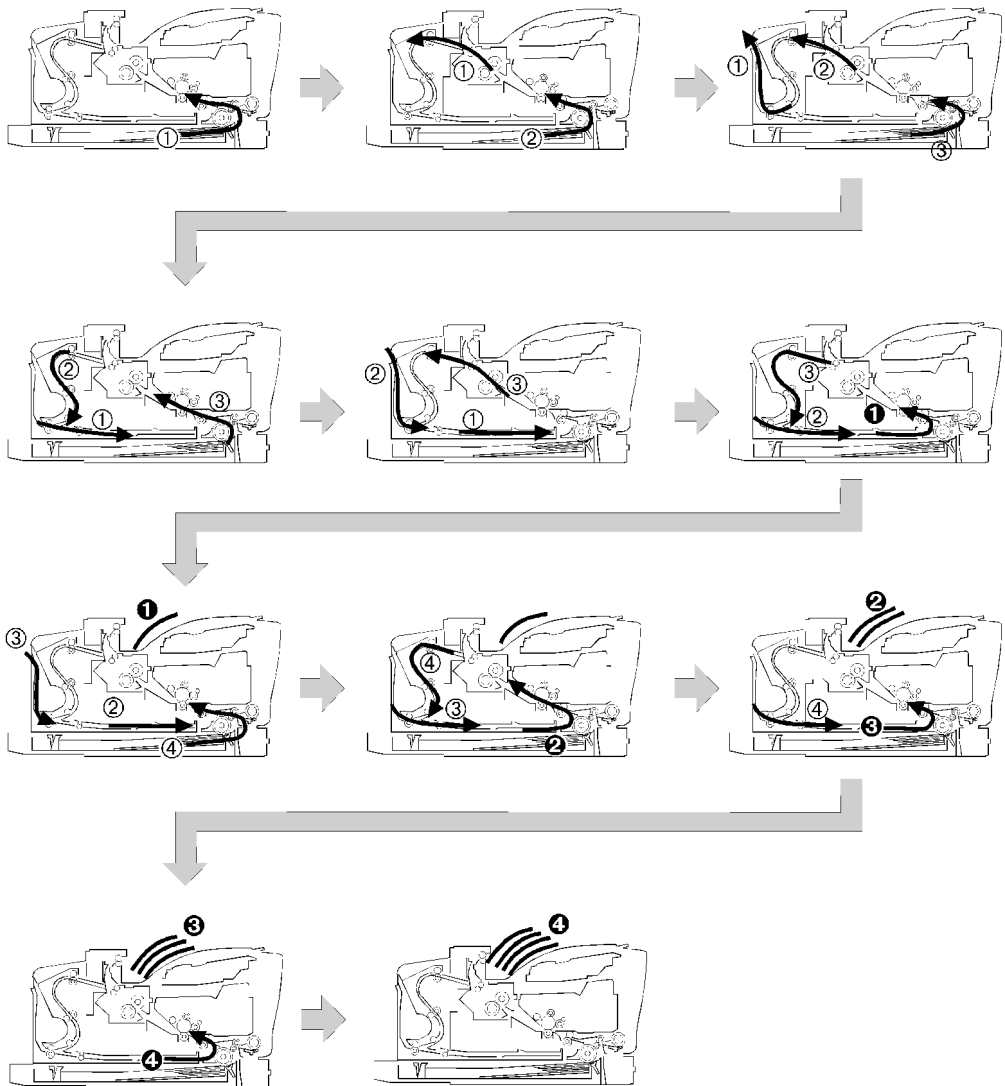
### Paper Smaller Than A4 LEF/LT LEF

The duplex unit can store three sheets of paper.

**Example: 8 pages.** The center number (not circled) in the illustration shows the page order in the job. The circled numbers show the printing order (white circles: 1st side, black circles: 2nd side).



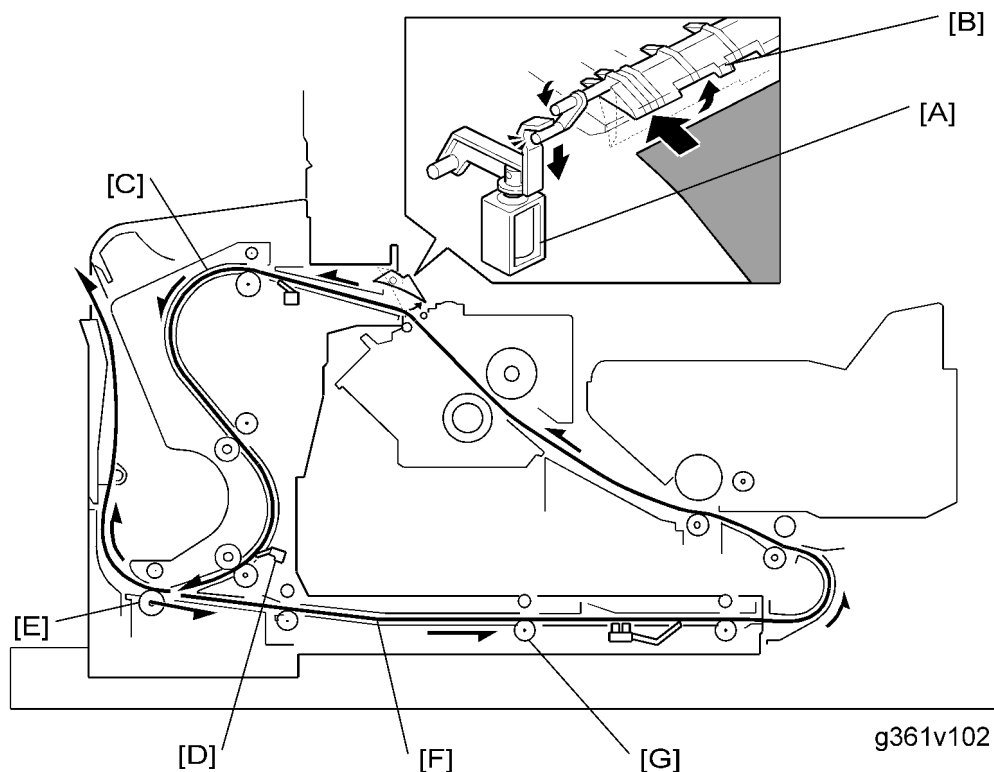
g361i501



g361d107

## Feed In and Exit Mechanism

2

**Feed:**

The junction gate solenoid [A] turns on to open the junction gate [B].

The paper fed from the main frame is sent to the inverter section [C].

**Inversion and Exit:**

After the trailing edge of the paper passes the inverter sensor [D], the inverter roller [E] changes its rotation direction and the paper goes to the transport area [F].

The transport rollers [G] send the paper to the registration rollers in the main frame.

g361d901a

Name	Rating	Manufacturer	Type No.
FU500	DC50V/1.5A	ROHM CO.,LTD	ICP-N38

---

MEMO

---

MEMO



---

MEMO