

Model: IF2		Date: 31-Jul-97	No: 001
Modified Article: FCU (Firmware)		Prepared by: Y.Tamaoka	
From: QAC 2nd Field Information Dept.			
Reason for Modification:	<input type="checkbox"/> Parts catalog correction <input type="checkbox"/> Vendor change <input type="checkbox"/> To meet standards <input type="checkbox"/> To facilitate assembly <input checked="" type="checkbox"/> To improve reliability () <input type="checkbox"/> Part Standardization <input type="checkbox"/> Other		
Modification Schedule			

Old part number	New part number	Description	Qty	Int	Page	Index	Note
H9050011	H9050061	PCB ASS'Y FCU (FRANCE)	1 - 1	X/O	3	9	*1

Note: *1

Firmware Update

1. Widening the tolerance for ringing signal detection on a PABX connection
2. Allowing the users to change the ring count in France
3. Wording change for country code in the system parameter list for France
4. Bug fix for PC FAX reception in France
5. "TAD" mode indication in France deleted

This software was applied to mass-production since June 1997.

RC	RE	ASIA	

Model: IF2		Date: 30-Sep-97	No: 002
Modified Article: OP - COVER		Prepared by: Y.Tamaoka	
From: QAC 2nd Field Information Dept.			
Reason for Modification:	<input type="checkbox"/> Parts catalog correction <input type="checkbox"/> Vendor change <input type="checkbox"/> To meet standards <input type="checkbox"/> To facilitate assembly <input checked="" type="checkbox"/> To improve reliability () <input type="checkbox"/> Part Standardization <input type="checkbox"/> Other		
Modification Schedule			

Old part number	New part number	Description	Qty	Int	Page	Index	Note
H905 1006	H905 1056	SHAFT:OPEN:R	1 - 1	X/O	4	6	*1

Applied from Aug. '97 production

Note:

*1 To increase the gap between OP – COVER and INK Cartridge to prevent CHK INK HEAD errors.

RC	RE	ASIA	
	*		

Model: IF2		Date: 30-Sep-97	No: 003
Modified Article: SCANNER UNIT		Prepared by: Y.Tamaoka	
From: QAC 2nd Field Information Dept.			
Reason for Modification:	<input type="checkbox"/> Parts catalog correction <input type="checkbox"/> Vendor change <input type="checkbox"/> To meet standards <input type="checkbox"/> To facilitate assembly <input type="checkbox"/> To improve reliability () <input checked="" type="checkbox"/> Part Standardization <input type="checkbox"/> Other		
Modification Schedule			

Old part number	New part number	Description	Qty	Int	Page	Index	Note
H905 3028	H905 3078	GEAR:IDLER:LIMITER	1 - 1	O/O	8	26	

Applied from Aug.'97 production

RC	RE	ASIA	
	*		

Model: IF2		Date: 15-Dec-97	No: 004
Modified Article: NCU		Prepared by: Y.Tamaoka	
From: QAC Field Information Dept.			
Reason for Modification:	<input checked="" type="checkbox"/> Parts catalog correction <input type="checkbox"/> Vendor change <input type="checkbox"/> To meet standards <input type="checkbox"/> To facilitate assembly <input checked="" type="checkbox"/> To improve reliability () <input type="checkbox"/> Part Standardization <input type="checkbox"/> Other		
Modification Schedule			

Old part Number	New part number	Description	Qty	Int	Page	Index	Note
	H905 0031	PCB ASS'Y : HE – 3 – NCU	1		3	8	1

Note1:

This part is the NCU for the EU1/EU2 model missing in the parts catalog.

From Sept. 1997 Production.

RC	RE	ASIA	
	*		

Model: IF2		Date: 15-May-98	No: 005
Modified Article: Cam (Paper Feed)		Prepared by: Y.Tamaoka	
From: QAC Field Information Dept.			
Reason for Modification:	<input type="checkbox"/> Parts catalog correction <input type="checkbox"/> Vendor change <input type="checkbox"/> To meet standards <input type="checkbox"/> To facilitate assembly <input checked="" type="checkbox"/> To improve reliability () <input type="checkbox"/> Part Standardization <input type="checkbox"/> Other		
Modification Schedule			

Old part number	New part number	Description	Qty	Int	Page	Index	Note
H905 3022	H905 3072	Cam	1 - 1	X/O	9	22	1

Note 1

To prevent it from being caught at the guide.

From Sept. 1997 production.

RC	RE	ASIA	
	*		

Model: IF2		Date: 15-May-98	No: 006
Modified Article: Scanner Unit		Prepared by: Y.Tamaoka	
From: QAC Field Information Dept.			
Reason for Modification:	<input checked="" type="checkbox"/> Parts catalog correction <input type="checkbox"/> Vendor change <input type="checkbox"/> To meet standards <input type="checkbox"/> To facilitate assembly <input type="checkbox"/> To improve reliability () <input type="checkbox"/> Part Standardization <input type="checkbox"/> Other		
Modification Schedule			

Old part number	New part number	Description	Qty	Int	Page	Index	Note
H9053020		Gear:Spur:Idler:Op			9	20	1
	H9053028	Gear:Idler:Limiter	1		9	26	2
	H9053029	Spring Clutch Ass'y	1		9	27	2

Note 1

The description is corrected.



Note 2

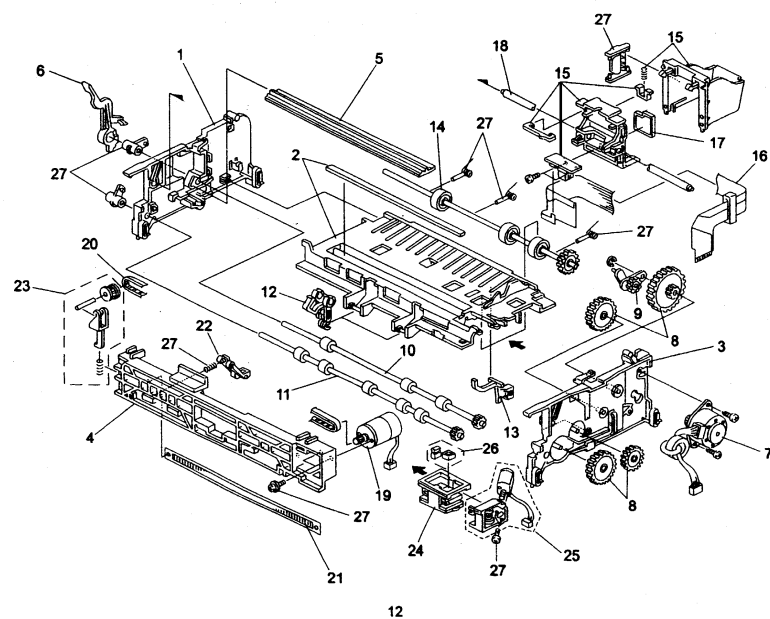
Parts information was missing.

RC	RE	ASIA	
	*		

Model: IF2		Date: 15-May-98	No: 007
Modified Article: Frame		Prepared by: Y.Tamaoka	
From: QAC Field Information Dept.			
Reason for Modification:	<input checked="" type="checkbox"/> Parts catalog correction <input type="checkbox"/> Vendor change <input type="checkbox"/> To meet standards <input type="checkbox"/> To facilitate assembly <input checked="" type="checkbox"/> To improve reliability () <input type="checkbox"/> Part Standardization <input type="checkbox"/> Other		
Modification Schedule			

The sensor belongs to H9055015 (Print Head Carrier Sub Ass'y) instead of H9055016 (Print Head Cable)

6.FRAME (H905)

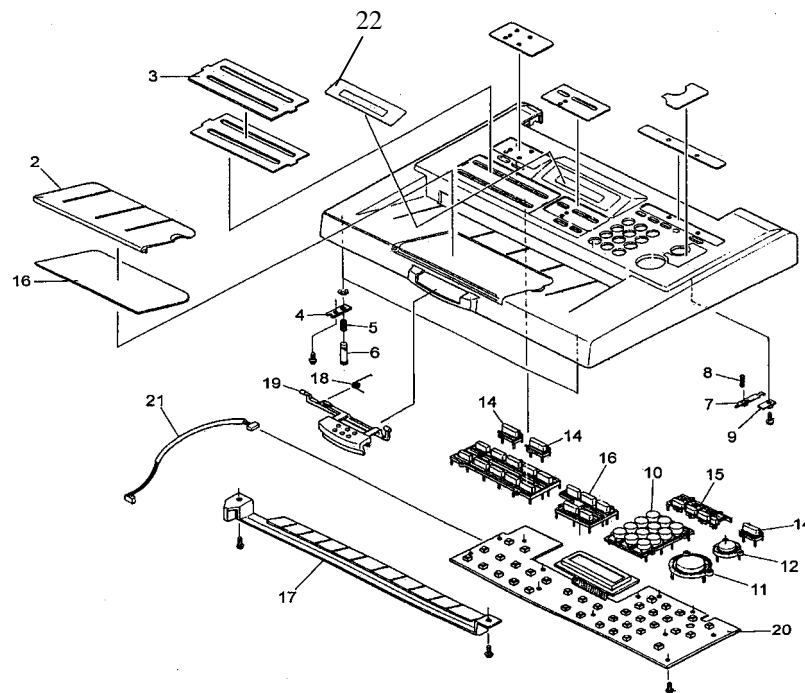


RC	RE	ASIA	
	*		

Model: IF2		Date: 30-Jun-98	No: 008
Modified Article: Operation Panel Cover		Prepared by: Y.Tamaoka	
From: QAC Field Information Dept.			
Reason for Modification:	<input checked="" type="checkbox"/> Parts catalog correction <input type="checkbox"/> Vendor change <input type="checkbox"/> To meet standards <input type="checkbox"/> To facilitate assembly <input type="checkbox"/> To improve reliability () <input type="checkbox"/> Part Standardization <input type="checkbox"/> Other		
Modification Schedule			

Old part number	New part number	Description	Qty	Int	Page	Index	Note
	H9051101	WINDOW LCD:RICOH	0 - 1		5	22	
	H9051102	WINDOW:LCD:INFO	0 - 1		5	22	

2.OP COVER(H905)



Window : LCD is required when the operation panel cover is replaced.

RC	RE	ASIA	
	*		

MB Correction

Reissue date: **31-Mar-99**

The items in bold italics have been corrected or added.

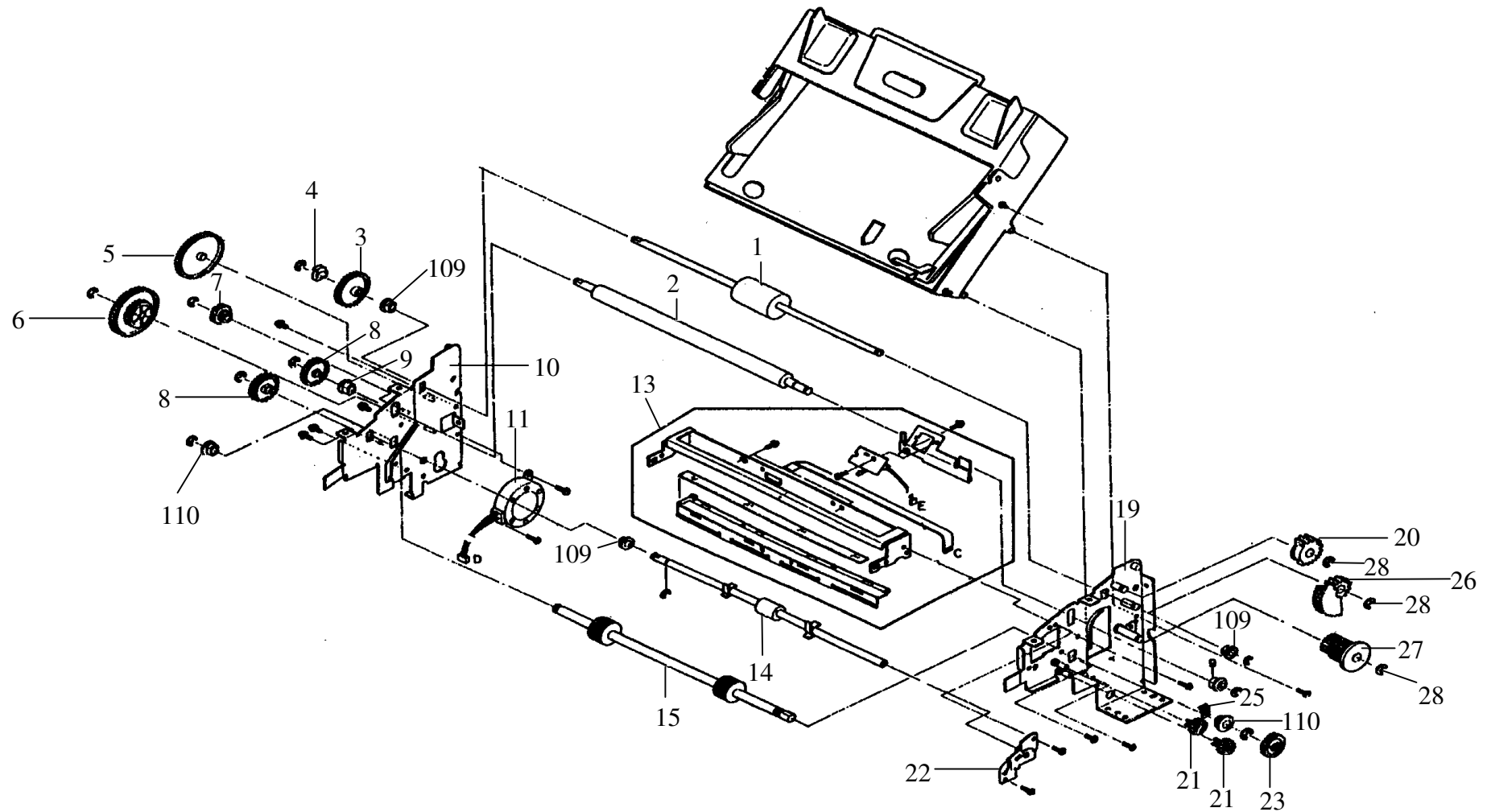
Model: IF2		Date: 31-Jul-98	No: 009a
Modified Article: Parts catalog page 8		Prepared by: Y.Tamaoka	
From: QAC Field Information Dept.			
Reason for Modification:	<input checked="" type="checkbox"/> Parts catalog correction <input type="checkbox"/> Vendor change <input type="checkbox"/> To meet standards <input type="checkbox"/> To facilitate assembly <input type="checkbox"/> To improve reliability () <input type="checkbox"/> Part standardization <input type="checkbox"/> Other		
Modification Schedule			

The configuration of gears on the Side plate ass'y : R is totally different from shown on page 8.

Refer to MB IF2-006 for the part numbers of items #26 and #27.

RC	RE	ASIA	
	*		

4. SCANNER UNIT (H905)



Model: IF2	Date: 31-Jul-98	No: 009a
------------	-----------------	----------

Index No	Parts No.	Description	Q'ty Par Asembly
1	H905 3001	ROLLER : SEP	1
2	H905 3002	ROLLER : CIS	1
3	H905 3003	GEAR : SEP : Z71	1
4	H905 3004	STOPPER RING : SEP	1
5	H905 3005	IDLE GEAR : Z47/97	1
6	H905 3006	IDLE GEAR : Z51/79	1
7	H905 3007	GEAR : IDLE	1
8	H905 3008	GEAR : SPUR : CIS	1
9	H905 3009	BUSH : CIS	2
10	H905 3010	SIDE PLATE ASS Y : L	1
11	H905 3011	TXD MOTOR – DC24V : 240MA	1
12	H905 3012	BACKED : CIS	1
13	H905 3013	CIS SUB ASS Y	1
14	H905 3014	EXIT ROLLER ASS Y	1
15	H905 3015	ROLLER : FEED	1
16	H905 3016	BRACKET : SENSOR	1
17	H905 3017	ENSOR ASS'Y : PAPER	1
18	H905 3018	FLEX CABLE : CIS	1
19	H905 3019	SIDE PLATE ASS'Y : R	1
20	H905 3020	GEAR : SPUR : IDLER:OP	1
21	H905 3021	GEAR : IDLE : Z19	1
22	H905 3022	CAM	1
23	H905 3023	GEAR : FEED ROLLER	1
24	H905 3024	HARNESS ASS'Y : PAPER	1
25	H905 3025	SPRING : DOC	1
26	H905 3028	GEAR : IDLER : LIMITE5R	1
27	H905 3029	SPRING : CLUTCH ASS'Y	1

Index	Parts No.	Description	Q'ty Per Asembly
109	H905 3026	BUSHING – 6*10*6mm	2
110	H905 3027	BUSHING 8mm	2

Model: IF2		Date: 15-Oct-98	No.: 010
Modified Article: ADF		Prepared by: Y.Tamaoka	
From: GTSS Field Information Dept.			
Reason for Modification:	<input type="checkbox"/> Parts catalog correction <input type="checkbox"/> To facilitate assembly <input type="checkbox"/> Part standardization	<input type="checkbox"/> Vendor change <input checked="" type="checkbox"/> To improve reliability <input type="checkbox"/> Other	<input type="checkbox"/> To meet standards ()

Old part number	New part number	Description	Qty	Int	Page	Index	Note
	H905 9800	Kit Mylar Sheets ADF	0 - 1		7	1	1

Note 1: This kit consists of two Mylar sheets.
 Relevant RTB: IF2 - 009

RC	REBV	ASIA	
	*		