

MODIFICATION BULLETIN NO. FX7-001

ISSUED ON 15.JAN.1997

Model	FAX 1700L					Date of Modification	
Modified Article	ADF					Execution Date	
Reason for Modification	<div style="display: flex; justify-content: space-between;"> <div> <input checked="" type="checkbox"/> Parts catalog correction <input type="checkbox"/> Vender change </div> <div> <input type="checkbox"/> To meet standards () <input type="checkbox"/> Part standardization </div> <div> <input type="checkbox"/> To facilitate assembly <input type="checkbox"/> To improve reliability <input type="checkbox"/> Other </div> </div>						

Old Part No.	New Part No.	Description	Q'ty Used Old → New	Interchange- ability	Remarks	Parts Catalog	
						Index No.	Page
H529 1147	H529 1155	Document Friction Plate	1 → 1	O / O		9	5

S.Fujii
General Manager
2nd Field Information Department
QA Division

Prepared by K.Moriizumi

RC	RE	ASIA	
*	*	*	

MODIFICATION BULLETIN NO. FX7-002

ISSUED ON 15.JAN.1997

Model	FAX 1700L		Date of Modification
Modified Article	Scanner Sensor Board		After the old parts are out of stock.
Reason for Modification	<div> <input type="checkbox"/> Parts catalog correction <input type="checkbox"/> To meet standards () <input type="checkbox"/> To facilitate assembly </div> <div> <input checked="" type="checkbox"/> Vender change <input type="checkbox"/> Part standardization <input type="checkbox"/> To improve reliability </div> <div> <input type="checkbox"/> Other </div> <p>The vender of the PWB - Scanner Sensor Board has been changed.</p>		

Old Part No.	New Part No.	Description	Q'ty Used Old → New	Interchange- ability	Remarks	Parts Catalog	
						Index No.	Page
H529 5053	H529 5053A	Scanner Sensor Board	1 → 1	O / O		6	5

RC

RE

ASIA

*

*

*

S.Fujii
General Manager
2nd Field Information Department
QA Division

Prepared by K.Moriizumi

MODIFICATION BULLETIN NO. FX7-003

ISSUED ON 15.JAN.1997

Model	FAX 1700L		Date of Modification
Modified Article	Scanner Cover		From the Nov. productions
Reason for Modification	<div style="display: flex; justify-content: space-between;"> <div> <input type="checkbox"/> Parts catalog correction <input type="checkbox"/> Vender change </div> <div> <input type="checkbox"/> To meet standards () <input type="checkbox"/> Part standardization </div> <div> <input type="checkbox"/> To facilitate assembly <input checked="" type="checkbox"/> To improve reliability <input type="checkbox"/> Other </div> </div> <p>The sheet has been added to the scanner cover in order to reset the document exit sensor quickly.</p>		

Old Part No.	New Part No.	Description	Q'ty Used Old → New	Interchange-ability	Remarks	Parts Catalog	
						Index No.	Page
	H529 1156	SHEET - SCANNER COVER	0 → 1			-	-

RC	RE	ASIA	
*	*	*	


S.Fujii
 General Manager
 2nd Field Information Department
 QA Division

Prepared by K.Moriizumi



MODIFICATION BULLETIN

Model: FX7		Date: 15-Feb-97	No: 004	1/1
Modified Article: PSU Part number change			Prepared by: S.Yoshio	
From: 2nd Technical Support Section			Checked by: T.Ito	
Reason for Modification:	<input checked="" type="checkbox"/> Parts catalog correction <input type="checkbox"/> Vendor change <input type="checkbox"/> To meet standards <input type="checkbox"/> To facilitate assembly <input type="checkbox"/> To improve reliability () <input type="checkbox"/> Part Standardization <input type="checkbox"/> Other			

Old part number	New part number	Description	Qty	Int	Page	Index	Note
H5295102	H5295111	PCB - PSU - 115V	1-1		14	6	
H5295101	H5295112	PCB - PSU - 230V	1-1		14	6	

Model: FX7		Date: 28-Feb-97	No: 005	1/1
Modified Article: Scanner (Lower unit)			Prepared by: Y.Tamaoka	
From: 2nd Technical Support Section			Checked by: S. Fujii	
Reason for Modification:	<div><div><input type="checkbox"/> Parts catalog correction</div><div><input type="checkbox"/> Vendor change</div><div><input type="checkbox"/> To meet standards</div><div><input type="checkbox"/> To facilitate assembly</div><div><input checked="" type="checkbox"/> To improve reliability</div><div>()</div><div><input type="checkbox"/> Part Standardization</div><div><input type="checkbox"/> Other</div></div>			

Old part number	New part number	Description	Qty	Int	Page	Index	Note
H5291136	H5291159	Document Guide	1→1	X/O	7	6	

RC	RE	ASIA	
*	*	*	

Model: FX7		Date: 28-Feb-97	No: 006	1/1
Modified Article: FCU			Prepared by: Y.Tamaoka	
From: 2nd Technical Support Section			Checked by: S. Fujii	
Reason for Modification:	<input type="checkbox"/> Parts catalog correction <input type="checkbox"/> Vendor change <input checked="" type="checkbox"/> To meet standards (Norwegian PTT) <input type="checkbox"/> To facilitate assembly <input type="checkbox"/> To improve reliability <input type="checkbox"/> Part Standardization <input type="checkbox"/> Other			

Old part number	New part number	Description	Qty	Int	Page	Index	Note
H5286040E	H5296040F	FCU	1→1	O/O	13	18	

The coil labelled L3 is changed (16070893 → 16070757).

RC	RE	ASIA	
	*		

Model: FX7		Date: 28-Feb-97	No: 007	1/1
Modified Article: ADF			Prepared by: Y.Tamaoka	
From: 2nd Technical Support Section			Checked by: S. Fujii	
Reason for Modification:	<input type="checkbox"/> Parts catalog correction <input type="checkbox"/> Vendor change <input type="checkbox"/> To meet standards <input checked="" type="checkbox"/> To facilitate assembly <input type="checkbox"/> To improve reliability () <input type="checkbox"/> Part Standardization <input type="checkbox"/> Other			

Old part number	New part number	Description	Qty	Int	Page	Index	Note
H5291155	H5291157	Document Friction Plate	1→1	X/O	5	9	Below
H5291148	H5291158	Friction Lever	1→1	O/X	5	10	Below

The interchangeability of these parts is "X/O" in combination.

(Both the friction plate and the lever need to be replaced when either H5291155 or H5291148 is replaced)

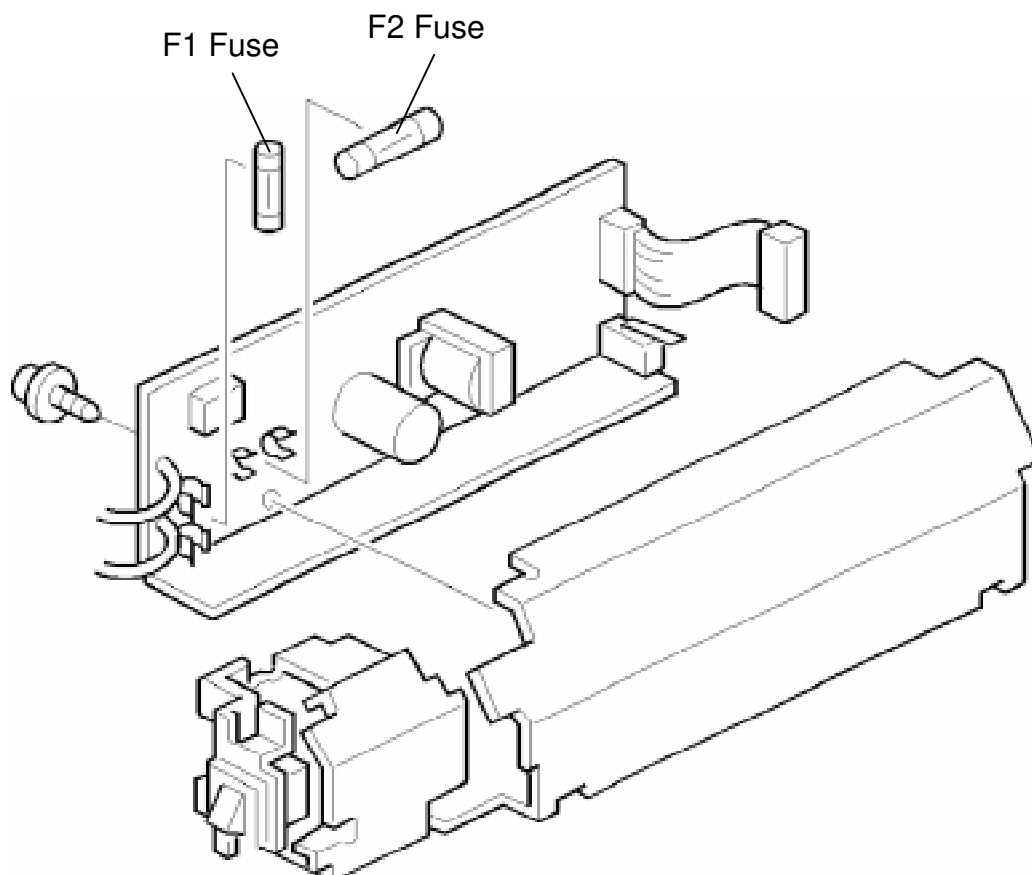
RC	RE	ASIA	
*	*	*	

Model: FX7/LX7		Date: 31-Aug-97	No: F/LX7 - 008
Modified Article: Part Number of the Fuse in the PSU		Prepared by: S.Yoshio	
From: 2nd Technical Support Section			
Reason for Modification:	<input checked="" type="checkbox"/> Parts catalog correction <input type="checkbox"/> Vendor change <input type="checkbox"/> To meet standards <input type="checkbox"/> To facilitate assembly <input type="checkbox"/> To improve reliability () <input type="checkbox"/> Part Standardization <input type="checkbox"/> Other		
Modification Schedule	done		

This MB was reissued because the MB number was incorrect.

	Model	Date	No.
<i>Incorrect</i>	FX7/LX7	31-Aug-97	175
<i>Correct</i>	FX7/LX7	15-Sep-97	008

Old part number	New part number	Description	Qty	Int	Page	Note
_____	1107 0855	Fuse 8A – 125V (F1 Fuse)	1		14	115V model
_____	1107 0872	Fuse 3.15A – 125V (F2 Fuse)	1		14	115V model
_____	1107 0911	Fuse 4A – 250V (F1 Fuse)	1		14	230V model
_____	1107 0912	Fuse 2.5A – 250V (F2 Fuse)	1		14	230V model



RC	RE	ASIA	
★	★	★	

Model: FX7/LX7		Date: 31-Oct-97	No: 009
Modified Article: CIS		Prepared by: K.Moriizumi	
From: QAC Field Information Dept.			
Reason for Modification:	<input type="checkbox"/> Parts catalog correction <input type="checkbox"/> Vendor change <input type="checkbox"/> To meet standards <input type="checkbox"/> To facilitate assembly <input checked="" type="checkbox"/> To improve reliability () <input type="checkbox"/> Part Standardization <input type="checkbox"/> Other		
Modification Schedule	The 1st. Production of August.		

Old part number	New part number	Description	Qty	Int	Page	Index	Note
H529 1151		CIS Holder	1→1		5	20	Below
H529 5055		Contact Image Sensor	1→0		5	19	Below
	H529 1161	CIS Unit	0→1				Below

It is sometimes necessary to adjust the assembly of the CIS Holder, but it is difficult in the field. So, the CIS unit is supplied as a spare part.

RC	RE	ASIA	
*	*	*	

Model: FX7/LX7		Date: 31-Oct-97	No: 010
Modified Article: FCU, MCU		Prepared by: K.Moriizumi	
From: QAC Field Information Dept.			
Reason for Modification:	<input type="checkbox"/> Parts catalog correction <input type="checkbox"/> Vendor change <input type="checkbox"/> To meet standards <input checked="" type="checkbox"/> To facilitate assembly <input type="checkbox"/> To improve reliability () <input type="checkbox"/> Part standardization <input type="checkbox"/> Other		
Modification Schedule	After the old parts are out of stock.		

Old part number	New part number	Description	Qty	Int	Page	Index	Note
(FX7)							
H528 6040H	H528 6040J	PCB – FCU	1→1	O/O	13	18	
(LX7)							
H529 6040J	H529 6040K	PCB – MCU	1→1	O/O	13	18	

RC	RE	ASIA	
*	*	*	

Model: LX7		Date: 31-Oct-97	No: 011
Modified Article: MCU		Prepared by: K.Moriizumi	
From: QAC Field Information Dept.			
Reason for Modification:	<input type="checkbox"/> Parts catalog correction <input type="checkbox"/> Vendor change <input checked="" type="checkbox"/> To meet standards <input type="checkbox"/> To facilitate assembly <input type="checkbox"/> To improve reliability () <input type="checkbox"/> Part standardization <input type="checkbox"/> Other		
Modification Schedule	The 1st. Production of July.		

Old part number	New part number	Description	Qty	Int	Page	Index	Note
H529 6040J	H529 6041	PCB – MCU	1→1	X/O	13	18	Below

Taiwan only.

RC	RE	ASIA	
		*	

MB Correction

Reissue date: 15-May-98

The items in bold italic have been corrected or added.

Model: F/LX7		Date: 28-Feb-98	No: 012A
Modified Article: PSU		Prepared by: K.Moriizumi	
From: QAC Field Information Dept.			
Reason for Modification:	<input type="checkbox"/> Parts catalog correction <input type="checkbox"/> Vendor change <input type="checkbox"/> To meet standards <input type="checkbox"/> To facilitate assembly <input checked="" type="checkbox"/> To improve reliability () <input type="checkbox"/> Part Standardization <input type="checkbox"/> Other		
Modification Schedule			

Old part number	New part number	Description	Qty	Int	Page	Index	Note
(USA)							
H5295111	H5295113	PCB – PSU – 115V	1→1	O/O	15	6	
(Europe / Asia)							
H5295112	H5295114	PCB – PSU – 230V	1→1	X/O	15	6	

Modification :

H528-51 from A7180300001

H528-59 from X258031446

H528-60 from X238039161 (except 9246,9247,9259,9264)

H529-40 from E0880200174

H529-51 from A7280200001

H529-59 from X298020657

H529-60 from X278022704

H529-63 from X288020116

Other models: From April production

RC	RE	ASIA	
*	*	*	

Model: F/LX7		Date: 29-May-98	No: 013
Modified Article: Bushing - Exit Roller		Prepared by: K. Misugi	
From: Technical Service Department.			
Reason for Modification:	<input checked="" type="checkbox"/> Parts catalog correction <input type="checkbox"/> Vendor change <input type="checkbox"/> To meet standards <input type="checkbox"/> To facilitate assembly <input type="checkbox"/> To improve reliability () <input type="checkbox"/> Part Standardization <input type="checkbox"/> Other		
Modification Schedule			

The index number 16 (Bushing - Exit Roller) is not shown in the parts catalog illustration (page 1-6).

Please change the index number from 16 to 29 on page 1-7 of the parts catalog.
(Index number 29 was already assigned but there was no description.)

Page 1-7

3. Scanner (Lower Unit)

INDEX	PARTS NO.	Description	Note
16	H5291120	Bushing - Exit Roller	Wrong index numbering
29	H5291120	Bushing - Exit Roller	

RC	RE	ASIA	
✓	✓	✓	

MB Correction

Reissue date: 30-Sep-98

The items in bold italic have been corrected or added.

Model: FX4,FX6,FX6MMK2,LSO,IFO,FLX7,FR4,LFO BR1		Date: 15-Sep-98	No: Multi - 012 A
Modified Article: NCU		Prepared by: Y.Okunishi	
From: QAC Field Information Dept.			
Reason for Modification:	<input type="checkbox"/> Parts catalog correction <input checked="" type="checkbox"/> Vendor change <input type="checkbox"/> To meet standards <input type="checkbox"/> To facilitate assembly <input type="checkbox"/> To improve reliability () <input type="checkbox"/> Part Standardization <input type="checkbox"/> Other		
Modification Schedule	Once the stock of the old part runs out.		

Old part number	New part number	Description	Qty	Int	Page	Index	Note
54886040E	54886040F	PCB – NCU – HE1	1 – 1	O/O			*1
54886041E	54886041F	PCB – NCU – HE2	1 – 1	O/O			IF0
54886045B	54886045C	PCB – NCU – HE2Y	1 – 1	O/O			*2
54886050B	54886050C	PCB – NCU – HE - IT	1 – 1	O/O			FR4
54886052	54886052 A	PCB – NCU – HE – 1Y	1 – 1	O/O			*3
54886053B	54886053C	PCB – NCU – HE – 2Y	1 – 1	O/O			LFO
H0686003H	H0686003J	PCB – NCU – HE -ASA	1 – 1	O/O			*4
(H5047146)	(H5457108)	HIL – 220/240V	(1 – 1)	(O/O)			

Note: *1= FX4, FX6, FX6MK2, LSO

*2= FX7, LX7

*3= FR4 G3 Option

*4= BRO, BR1

Europe, Asia only

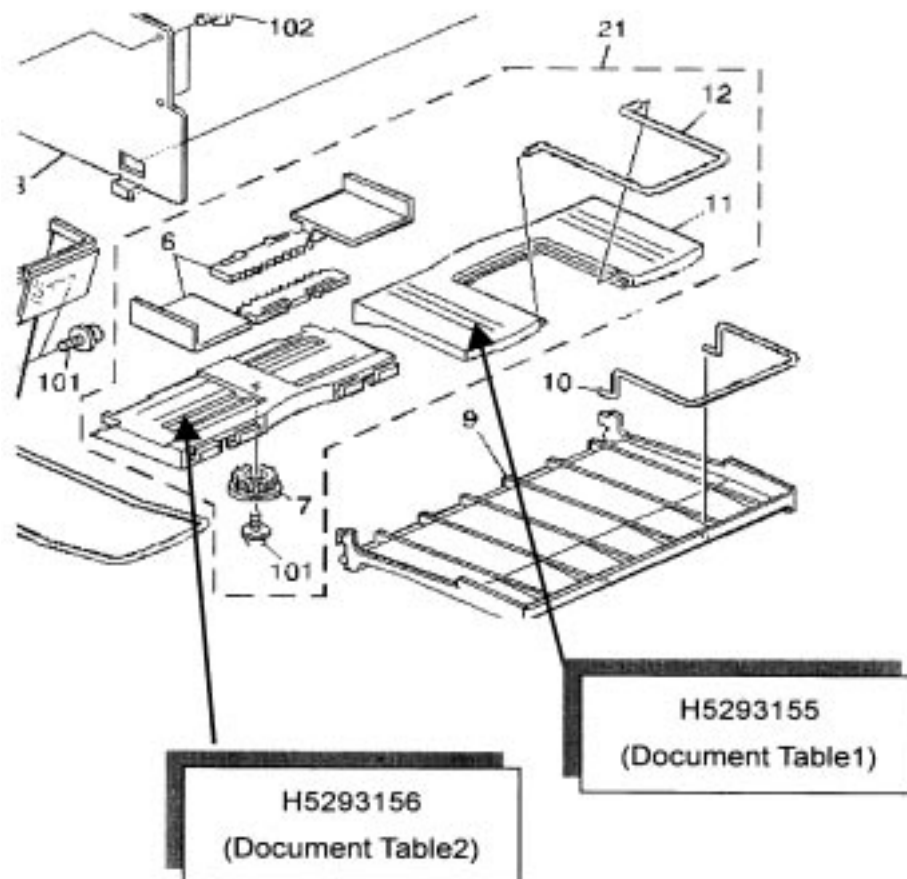
RC	RE	ASIA	
	*	*	

Model: FX7/LX7		Date: 15-Oct-98	No: 014
Modified Article: FX7/LX7 Parts Catalog Correction		Prepared by: S.Yoshio	
From: Technical service Dept.			
Reason for Modification:	<input checked="" type="checkbox"/> Parts catalog correction <input type="checkbox"/> To facilitate assembly <input type="checkbox"/> Part standardization	<input type="checkbox"/> Vendor change <input type="checkbox"/> To improve reliability <input type="checkbox"/> Other	<input type="checkbox"/> To meet standards ()

1.EXTERIOR INDEX NO.11

Status	Parts Number	Description
Current	H529 3156	Document Table
Correction	H529 3155	Document Table 1
	H529 3166	Document Table 2

Please refer to the diagram.



RC	REBV	ASIA	
*	*	*	

Model: F/LX7		Date: 31-Dec-98	No.: 015
Modified Article: FCU, MCU		Prepared by: K. Moriizumi	
From: GTSS Field Information Dept.			
Reason for Modification:	<input type="checkbox"/> Parts catalog correction <input type="checkbox"/> To facilitate assembly <input type="checkbox"/> Part standardization	<input checked="" type="checkbox"/> Vendor change <input type="checkbox"/> To improve reliability <input type="checkbox"/> Other	<input type="checkbox"/> To meet standards ()

Old part number	New part number	Description	Qty	Int	Page	Index	Note
(FX7)							
H528 6040K	H528 6050	PCB – FCU	1 – 1	O/O	13	18	
(LX7)							
H529 6040K	H529 6050	PCB - MCU	1 – 1	O/O	13	18	

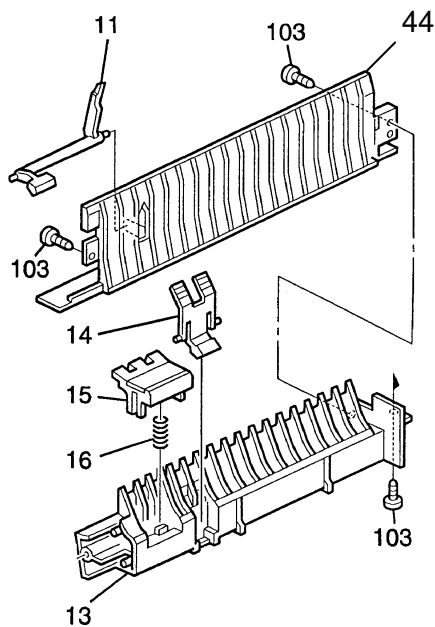
Reason:

The vendor of the flash ROM on the FCU/MCU board will stop making the flash ROMs, so we have changed the flash ROMs.

RC	REBV	ASIA	
*	*	*	

Model: FL/X7		Date: 31-Jan-99	No.: 16
Modified Article: Parts catalog correction		Prepared by: K. Moriizumi	
From: GTSS Field Information Dept			
Reason for Modification:	<input checked="" type="checkbox"/> Parts catalog correction	<input type="checkbox"/> Vendor change	<input type="checkbox"/> To meet standards ()
	<input type="checkbox"/> To facilitate assembly	<input type="checkbox"/> To improve reliability	
	<input type="checkbox"/> Part standardization	<input type="checkbox"/> Other	

Old part number	New part number	Description	Qty	Int	Page	Index	Note
-	V01028800	Paper Guide	1		15	44	



RC	REBV	ASIA	
*	*	*	

Model: FLX7		Date: 15-Aug-99	No.: MH528017
Modified Article: Ground Plate		Prepared by: K. Moriizumi	
From: Technical Service Dept., GTS Division			
Reason for Modification:	<input type="checkbox"/> Parts catalog correction	<input type="checkbox"/> Vendor change	<input type="checkbox"/> To meet standards ()
	<input type="checkbox"/> To facilitate assembly	<input type="checkbox"/> To improve reliability	
	<input checked="" type="checkbox"/> Part standardization	<input type="checkbox"/> Other	

Old part number	New part number	Description	Q'ty	Int	Page	Index	Note
H5292114	-	Ground Plate – Main Motor	1 - 0		13	9	

Model: LX7		Date: 07-Feb-01	No.: MH528018
Modified Article: MCU		Prepared by: Y. Okunishi	
From: Technical Services Dept., GTS Division			
Reason for Modification:	<input type="checkbox"/> Parts catalog correction <input type="checkbox"/> To facilitate assembly <input type="checkbox"/> Part standardization	<input checked="" type="checkbox"/> Vendor change <input type="checkbox"/> To improve reliability <input type="checkbox"/> Other ()	<input type="checkbox"/> To meet standards ()
Modification Schedule:	The old part (H5297101) has not been produced and the new part (H5237115) will be available at SPC in 3 months.		

Old part number	New part number	Description	Q'ty	Int	Page	Index	Note
	H5296050	PCB - MCU	1-1	O/O			*
H5297101	H5237115	IC – D9001LF	1-1	O/O	-	-	

* Part number of the PCB will not be changed.