

MODIFICATION BULLETIN NO. CRO-001

ISSUED ON August 27th, 1993

Model		CSI/CRO USA Version (FAX2500L/3500L)				Date of Modification	
Modified Article		Various				Execution Date	
Reason for Modification		<input checked="" type="checkbox"/> Parts catalog correction <input type="checkbox"/> Vender change <input type="checkbox"/> To meet standards () <input type="checkbox"/> Part standardization <input type="checkbox"/> To facilitate assembly <input type="checkbox"/> To improve reliability <input type="checkbox"/> Other				From the 1st mass production.	
Old Part No.	New Part No.	Description	Q'ty Used Old → New	Interchange- ability	Remarks	Parts Catalog	
						Index No.	Page
AA143287		Stepped Screw - M3	1 → 1		To be used only in CSI	13	1-5
H0812260		Right Ground Plate - Copy Out	1 → 1		To be used in both CSI and CRO	106	1-7
H0813388		Paper Size Detector Pin - Legal - Ricoh	1 → 1		To be used only in CSI	28	1-13
H0813409		Standard Pin	1 → 1		To be used only in CSI	78	1-11
H5105325		Right Ground Plate	1 → 1		Move to other section	141	1-5
H5105326		Left Ground Plate	1 → 1		Move to other section	142	1-5
<div style="text-align: right;"> H.Motojima Assistant General Manager FTS Sect. TS Dept. </div>							

MODIFICATION BULLETIN NO. CRO-002

ISSUED ON August 27th, 1993

Model		CSI/CRO USA Version (NRG 9650/9665)				Date of Modification	
Modified Article		Various				Execution Date	
Reason for Modification		<input checked="" type="checkbox"/> Parts catalog correction <input type="checkbox"/> Vender change <input type="checkbox"/> To meet standards () <input type="checkbox"/> Part standardization <input type="checkbox"/> To facilitate assembly <input type="checkbox"/> To improve reliability <input type="checkbox"/> Other				From the 1st mass production.	
Old Part No.	New Part No.	Description	Q'ty Used Old → New	Interchange- ability	Remarks	Parts Catalog	
						Index No.	Page
AA143287		Stepped Screw - M3	1 → 1		To be used only in CSI	13	1-5
H0812260		Right Ground Plate - Copy Out	1 → 1		To be used in both CSI and CRO	106	1-7
H0813409		Standard Pin	1 → 1		To be used only in CSI	78	1-11
H5105325		Right Ground Plate	1 → 1		Move to other section	141	1-5
H5105326		Left Ground Plate	1 → 1		Move to other section	142	1-5
H5104255	H5104231	Quick Dial List - NRG : CRO	1 → 1	X / O		2	1-5
H5114255	H5114237	Quick Dial List - NRG : CSI	1 → 1	X / O		2	1-5
<div style="text-align: right;"> H.Motojima Assistant General Manager FTS Sect. TS Dept. </div>							

MODIFICATION BULLETIN NO. CRO-003

ISSUED ON August 27th, 1993

Model		CSI/CRO USA Version (OMNIFAX L42/L46)				Date of Modification	
Modified Article		Various				Execution Date	
Reason for Modification		<div> <input checked="" type="checkbox"/> Parts catalog correction <input type="checkbox"/> To meet standards () <input type="checkbox"/> To facilitate assembly </div> <div> <input type="checkbox"/> Vender change <input type="checkbox"/> Part standardization <input type="checkbox"/> To improve reliability </div> <div> <input type="checkbox"/> Other </div>				From the 1st mass production.	
Old Part No.	New Part No.	Description	Q'ty Used Old → New	Interchange-ability	Remarks	Parts Catalog	
						Index No.	Page
AA143287		Stepped Screw - M3	1 → 1		To be used only in CSI	13	1-5
H0812260		Right Ground Plate - Copy Out	1 → 1		To be used in both CSI and CRO	106	1-7
H0813409		Standard Pin	1 → 1		To be used only in CSI	78	1-11
H5105325		Right Ground Plate	1 → 1		Move to other section	141	1-5
H5105326		Left Ground Plate	1 → 1		Move to other section	142	1-5
H5104255	H5104275	Quick Dial List - OMN1 : CRO	1 → 1	X / O		2	1-5
H5114255	H5114243	Quick Dial List - OMN2 : CSI	1 → 1	X / O		2	1-5
<div>H.Motojima</div> <div>Assistant General Manager</div> <div>FTS Sect. TS Dept.</div>							

MODIFICATION BULLETIN NO. CRO-004

ISSUED ON August 27th, 1993

Model		CSI/CRO USA Version (SAVINFAX 3630/3670)				Date of Modification	
Modified Article		Various				Execution Date	
Reason for Modification		<input checked="" type="checkbox"/> Parts catalog correction <input type="checkbox"/> Vender change <input type="checkbox"/> To meet standards () <input type="checkbox"/> Part standardization <input type="checkbox"/> To facilitate assembly <input type="checkbox"/> To improve reliability <input type="checkbox"/> Other				From the 1st mass production.	
Old Part No.	New Part No.	Description	Q'ty Used Old → New	Interchange-ability	Remarks	Parts Catalog	
						Index No.	Page
AA143287		Stepped Screw - M3	1 → 1		To be used only in CSI	13	1-5
H0812260		Right Ground Plate - Copy Out	1 → 1		To be used in both CSI and CRO	106	1-7
H0813409		Standard Pin	1 → 1		To be used only in CSI	78	1-11
H5105325		Right Ground Plate	1 → 1		Move to other section	141	1-5
H5105326		Left Ground Plate	1 → 1		Move to other section	142	1-5
H5104255	H5104237	Quick Dial List - SAVIN : CSI	1 → 1	X / O		2	1-5
H5114255	H5114249	Quick Dial List - SAVIN : CRO	1 → 1	X / O		2	1-5
<div style="text-align: right;"> H.Motojima Assistant General Manager FTS Sect. TS Dept. </div>							

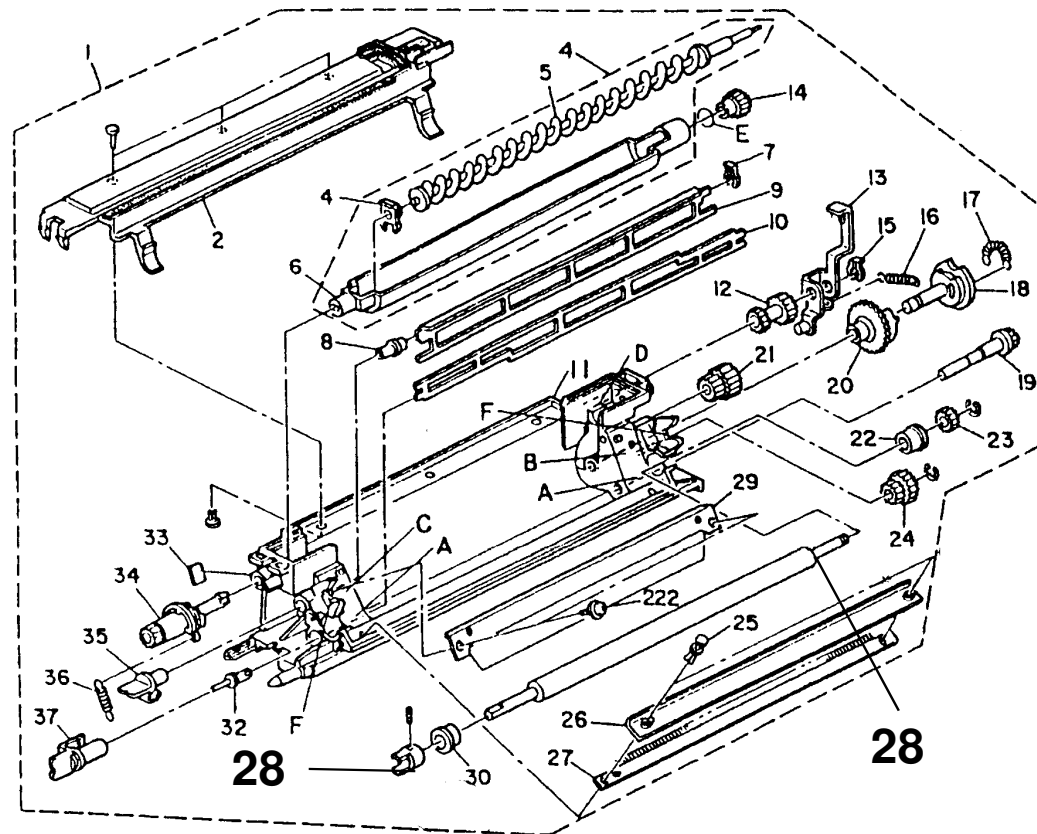
MODIFICATION BULLETIN NO. CRO-005ISSUED ON August 27th, 1993

Model	CSI/CRO USA Version (FAX2500L/3500L, NRG9650/9665, OMNIFAX L42/L46, SAVINFAX3630/3670)					Date of Modification	
Modified Article	Development Roller					Execution Date	
Reason for Modification	<div style="display: flex; justify-content: space-between;"> <div> <input checked="" type="checkbox"/> Parts catalog correction <input type="checkbox"/> Vender change </div> <div> <input type="checkbox"/> To meet standards () <input type="checkbox"/> Part standardization </div> <div> <input type="checkbox"/> To facilitate assembly <input type="checkbox"/> To improve reliability <input type="checkbox"/> Other </div> </div> <p>We have cancelled to supply H0812479 itself as a service part. And we have combined it with Developwent Roller (P/No.H0822400, index No.28). See the attached page.</p>					From thes 1st mass production.	

Old Part No.	New Part No.	Description	Q'ty Used Old → New	Interchange- ability	Remarks	Parts Catalog	
						Index No.	Page
H0812497		Joint - Development Roller	1 → 0			31	1-7

H.Motojima
 Assistant General Manager
 FTS Sect. TS Dept.

DETAILS OF MODIFICATION



MODIFICATION BULLETIN NO. CRO-006

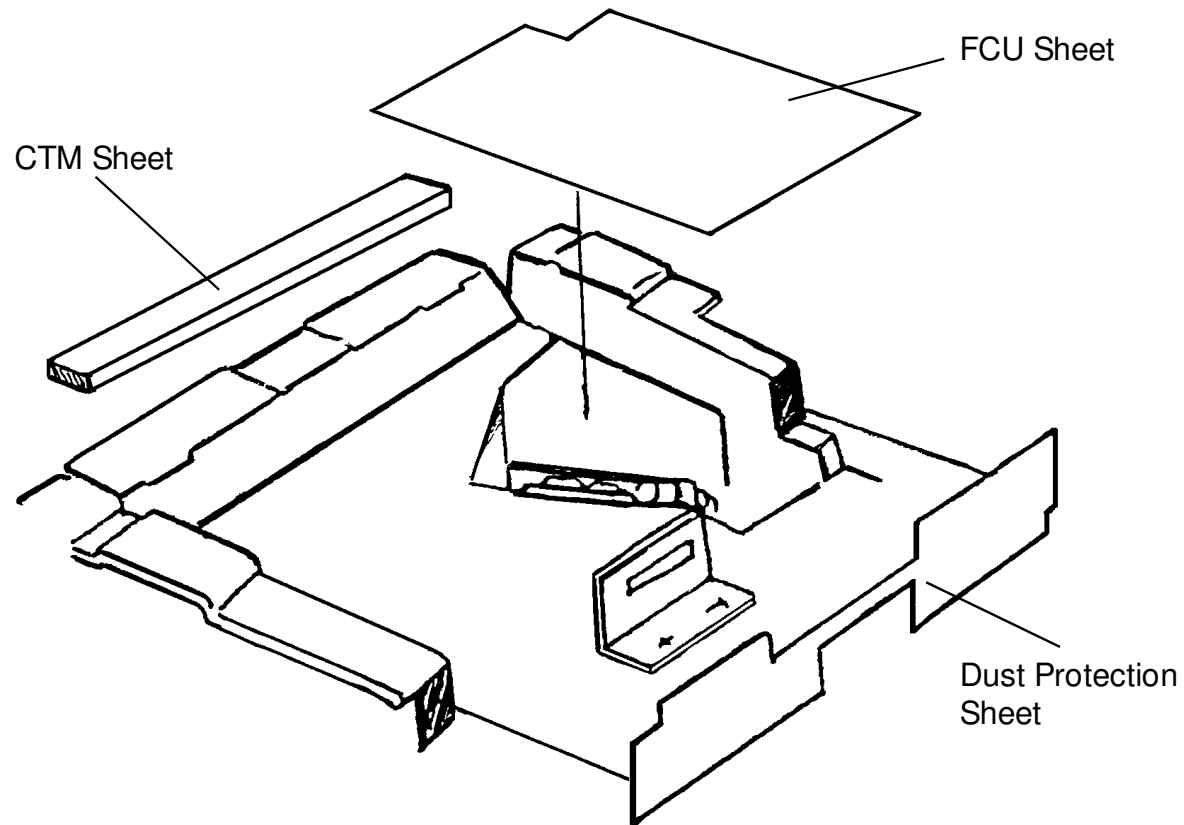
ISSUED ON August 27th, 1993

Model		CRO all models				Date of Modification	
Modified Article		Sheet				Execution Date	
Reason for Modification		<input type="checkbox"/> Parts catalog correction <input type="checkbox"/> To meet standards () <input type="checkbox"/> To facilitate assembly <input type="checkbox"/> Vender change <input type="checkbox"/> Part standardization <input checked="" type="checkbox"/> To improve reliability <input type="checkbox"/> Other				From May productions.	
		To protect the mirror from becoming durty.					

Old Part No.	New Part No.	Description	Q'ty Used Old → New	Interchange- ability	Remarks	Parts Catalog	
						Index No.	Page
	H081 1236	CTM Sheet	0 - 1			150	5
	H081 1237	FCU Sheet	0 - 1			151	5
	H081 1238	Dust Protection Sheet	0 - 1			152	5

H.Motojima
Assistant General Manager
FTS Sect. TS Dept.

DETAILS OF MODIFICATION



MODIFICATION BULLETIN NO. CRO-006ISSUED ON August, 27nd, 1993

Model	CSI/CRO All models						Date of Modification	
Modified Article	PCB - FCU						Execution Date	
Reason for Modification	<input type="checkbox"/> Parts catalog correction <input type="checkbox"/> To meet standards () <input type="checkbox"/> To facilitate assembly <input type="checkbox"/> Vender change <input type="checkbox"/> Part standardization <input checked="" type="checkbox"/> To improve reliability <input type="checkbox"/> Other						From June. productions	
To improve the reliability of SAF backup circuit. (The data may be erased, when the power is switched off rarely)								
Old Part No.	New Part No.	Description	Q'ty Used Old → New	Interchange- ability	Remarks	Parts Catalog		
						Index No.	Page	
H0816153	H0816153A	PCB-FCU - USA: α	1 - 1	X / O		49	5	
H0816152	H0816152A	PCB-FCU - USA: β	1 - 1	X / O		49	5	
H0816155	H0816155A	PCB-FCU - Tel: α	1 - 1	X / O		49	5	
H0816154	H0816154A	PCB-FCU - Tel: β	1 - 1	X / O		49	5	
H0816151	H0816151A	PCB-FCU - EUR	1 - 1	X / O		49	5	
H0816156	H0816156A	PCB-FCU - ASIA	1 - 1	X / O		49	5	
	14010611	Diode - 1S1588	(9 - 10)		(H081 6153/6152/6151/6156)			
	14010611	Diode - 1S1588	(11 - 12)		(H081 6155/ 6154)			
	14021197	Diode - MTZ13C	(0 - 1)		(All FCUs)			
H.Motojima Assistant General Manager FTS Sect. TS Dept.								

MODIFICATION BULLETIN NO. CRO-006

ISSUED ON August, 27nd, 1993

[illegible]

MODIFICATION BULLETIN NO. CRO-007

ISSUED ON September 29th, 1993

Model	CSI/CRO All Models					Date of Modification	
Modified Article	PCB in the PSU					Execution Date	
Reason for Modification	<div> <input checked="" type="checkbox"/> Parts catalog correction <input type="checkbox"/> To meet standards () <input type="checkbox"/> To facilitate assembly </div> <div> <input type="checkbox"/> Vender change <input type="checkbox"/> Part standardization <input type="checkbox"/> To improve reliability </div> <div> <input type="checkbox"/> Other </div> <p>The PCB Ass'y in the PSU Ass'y can not be supplied by the manufacturer. Therefore, we have cancelled the part no. of the PCB from the register. If you need the PCB, please order the PSU Ass'y itself instead of the PCB.</p>						
Old Part No.	New Part No.	Description	Q'ty Used Old → New	Interchange- ability	Remarks	Parts Catalog	
						Index No.	Page
N6017121		PCB - PSU : 115V : CSI	1 → 0	X / O		-	-
	→ H5115601	PSU - CSI : USA	1 → 1			72	1-10
N6017122		PCB - PSU : 115V : CRO	1 → 0	X / O		-	-
	→ H5105603	PSU - CRO : USA	1 → 1			72	1-10
N6017119		PCB - PSU : CRO	1 → 0	X / O		-	-
	→ H5105601	PSU - CRO : EUROPE	1 → 1			72	1-10
	→ H5105602	PSU - CRO : ASIA	1 → 1			72	1-10

H.Motojima
 Assistant General Manager
 FTS Sect. TS Dept.

MODIFICATION BULLETIN NO. CRO-008

ISSUED ON October 14th, 1993

Model		CS1/CRO All Models				Date of Modification	
Modified Article		Heat Sink in the PSU				Execution Date	
Reason for Modification		<div> <input checked="" type="checkbox"/> Parts catalog correction <input type="checkbox"/> To meet standards () <input type="checkbox"/> To facilitate assembly </div> <div> <input type="checkbox"/> Vender change <input type="checkbox"/> Part standardization <input type="checkbox"/> To improve reliability </div> <div> <input type="checkbox"/> Other </div> <p>The following parts in the PSU can not be supplied by the manufacturer. Therefore, we have cancelled the part numbers from the register.</p>					
Old Part No.	New Part No.	Description	Q'ty Used Old → New	Interchange-ability	Remarks	Parts Catalog	
						Index No.	Page
H5115601		PSU - Ass'y : USA : CS1	1 → 1	O / O		72	1-10
└─N6016730		Heat Sink Ass'y 1 : CS1	1 → 0		(HA1)	-	-
└─N6016731		Heat Sink Ass'y 2 : CS1	1 → 0		(HA2)	-	-
H5105603		PSU - Ass'y - USA : CRO	1 → 1	O / O		72	1-10
└─N6016729		Heat Sink Ass'y 1 : CRO	1 → 0		(HA1)	-	-
└─N6016731		Heat Sink Ass'y 2 : CS1	1 → 0		(HA2)	-	-
H5105601		PSU - Ass'y - Europe	1 → 1	O / O		72	1-10
└─N6016719		Heat Sink Ass'y 1 : CRO	1 → 0		(HA2)	-	-
└─N6016720		Heat Sink Ass'y 2 : CRO	1 → 0		(HA1)		
H5105602		PSU - Ass'y - Asia	1 → 1	O / O		72	1-10
└─N6016719		Heat Sink Ass'y 1 : CRO	1 → 0		(HA2)	-	-
└─N6016720		Heat Sink Ass'y 2 : CRO	1 → 0		(HA1)	-	-
<div>H.Motojima</div> <div>Assistant General Manager</div> <div>ETS Sect. TS Dept</div>							

MODIFICATION BULLETIN NO. CRO-009

ISSUED ON October 15th, 1993

Model		CS1/CRO USA Version				Date of Modification	
Modified Article		PSU-115V				Execution Date	
Reason for Modification		<div><div><input checked="" type="checkbox"/> Parts catalog correction</div><div><input type="checkbox"/> Vender change</div><div><input type="checkbox"/> To meet standards ()</div><div><input type="checkbox"/> Part standardization</div><div><input type="checkbox"/> To facilitate assembly</div><div><input type="checkbox"/> To improve reliability</div><div><input type="checkbox"/> Other</div></div> <div>Parts List Correction.</div>					

Old Part No.	New Part No.	Description	Q'ty Used Old → New	Interchange- ability	Remarks	Parts Catalog	
						Index No.	Page
H5115601	H5115601A	PSU - USA : CS1	1 → 1	X / O		72	1-10
└N6011304A	N6011359	Heat Sink 2 : CS1/CRO	1 → 1			-	---
H5105603	H5105603A	PSU - USA : CRO	1 → 1	X / O		72	1-10
└N6011304A	N6011359	Heat Sink 2 : CS1/CRO	1 → 1			-	---
<div>H.Motojima</div> <div>Assistant General Manager</div> <div>FTS Sect. TS Dept.</div>							

MODIFICATION BULLETIN NO. CRO-010

ISSUED ON October 15th, 1993

Model	CS1 All Models						Date of Modification	
Modified Article	FCU						Execution Date	
Reason for Modification	<div> <input checked="" type="checkbox"/> Parts catalog correction <input type="checkbox"/> To meet standards () <input type="checkbox"/> To facilitate assembly </div> <div> <input type="checkbox"/> Vender change <input type="checkbox"/> Part standardization <input type="checkbox"/> To improve reliability </div> <div> <input type="checkbox"/> Other </div> <p>The FCU has benn modifiecl, because the PWB was changed.</p>							
Old Part No.	New Part No.	Description	Q'ty Used Old → New	Interchange- ability	Remarks	Parts Catalog		
						Index No.	Page	
H5116005C	H5116005D	PCB - FCU : USA : CS1	1 - 1	X / O		49	1-4	
	14073290	IC - TC74HC02AF	0 - 1		(IC43)	-	-	
16027006	16070536	EMI Core - EXCELD35C	1 - 1		(FIL9)	-	-	
16061397		Capacitor - 68PF ±5% 50V	1 - 2		(C68,171)	-	-	
<div style="text-align: right;"> H.Motojima Assistant General Manager FTS Sect. TS Dept. </div>								

MODIFICATION BULLETIN NO. CRO-011ISSUED ON October 15th, 1993

Model	CS1 All Models					Date of Modification	
Modified Article	FCU					Execution Date	
Reason for Modification	<div style="display: flex; justify-content: space-between;"> <div> <input checked="" type="checkbox"/> Parts catalog correction <input type="checkbox"/> Vender change </div> <div> <input type="checkbox"/> To meet standards () <input type="checkbox"/> Part standardization </div> <div> <input type="checkbox"/> To facilitate assembly <input type="checkbox"/> To improve reliability <input type="checkbox"/> Other </div> </div> <p>Circuit Diagram P.6/8 has been corrected. Please refer to the attached page.</p>						
Old Part No.	New Part No.	Description	Q'ty Used Old → New	Interchange- ability	Remarks	Parts Catalog	
						Index No.	Page
H5116005D	H5116005E	FCU - USA : CS1	1 - 1	X / O		49	1-4
H.Motojima Assistant General Manager FTS Sect. TS Dept.							

MODIFICATION BULLETIN NO. CRO-011

ISSUED ON October 15th, 1993

CIRCUIT DIAGRAM - FCU [P.6 / 8]

