

Model: Schmidt 1		Date: 15-Mar-99	No.: 1
Modified Article: FCU		Prepared by: Y. Okunishi	
From: GTSS Field Information Dept			
Reason for Modification:	<input type="checkbox"/> Parts catalog correction <input type="checkbox"/> To facilitate assembly <input type="checkbox"/> Part standardization	<input type="checkbox"/> Vendor change <input checked="" type="checkbox"/> To improve reliability <input type="checkbox"/> Other	<input type="checkbox"/> To meet standards ()

Old part number	New part number	Description	Qty	Int	Page	Index	Note
H5456120N	H5456120P	PCB – FCU – US	1 - 1	X/O	21	13	
H5456135F	H5456135F	PCB – FCU – EU/AIS	1 - 1	X/O	21	13	
(H5457200F)	(H5457200G)	Program – Sch1					

This modification is for the communication problem through PBX units that detect Ground Start.

See RTB Sch1 – 003.

RC	REBV	ASIA	
*	*	*	

Reissued: 31-Mar-99

Model: Schmidt 1 (FAX2000L)	Date: 15-Mar-99	No.: 2a
-----------------------------	-----------------	---------

MB Correction

The items in bold italics have been corrected or added.

Modified Article: Drive Section (Paper Exit Roller Gear)		Prepared by: Y.Okunishi	
From: GTSS Field Information Dept.			
Reason for Modification:	<input type="checkbox"/> Parts catalog correction <input type="checkbox"/> To facilitate assembly <input type="checkbox"/> Part standardization	<input type="checkbox"/> Vendor change <input checked="" type="checkbox"/> To improve reliability <input type="checkbox"/> Other	<input type="checkbox"/> To meet standards ()
Modification Schedule	March 1999		

Old part number	New part number	Description	Qty	Int	Page	Index	Note
H5452133	H5452133A	Gear – Paper Exit Roller	1 - 1	X/X	19	19	*
54472681		Snap Ring	2 - 1		19	20	*
	H5153543	E-Ring - JRE4	0 - 1	X/X	19	20	*

We found that the Paper Exit Roller Gear (***Index 19***) and the Fusing Drive Gear (***Gear- 46T: Index 18***) were out of position during the inspection in the factory. The cause is that the Fusing Drive Gear slipped to the outside.

The problem happened one time in the factory.

We have tried to duplicate the problem in our tests, however we have never seen the problem again. So, we think that it does not happen often in the field.

Just in case, we changed the Paper Exit Roller Gear to a gear with a stopper that prevents the Fusing Drive Gear from slipping out.

Note:

The thickness of the Paper Exit Roller Gear was increased and the Snap Ring became thinner as the result of the above change.

When you replace the old Paper Exit Roller Gear with the new one, you need to replace the Snap Ring with the new one (JRE4 E-Ring above) too.

The old Paper Exit Roller Gear has not been supplied as a spare part. So, you can have only the new type gear.

We implemented the following on the machines produced in ***January 1999*** as a tentative countermeasure before the modification above.

- 1) Added a thin spacer between the Paper Exit Roller Gear and the Snap Ring.
- 2) Exchanged the Snap Ring with the new JRE4 E-Ring.

*** Applied units: NRG Europe - From S/N AS39811141**
Others - From January production

RC	REBV	ASIA	
*	*	*	

Reissued: 30-Apr-99

Model: Schmidt1	Date: 31-Mar-99	No.: MH545003a
-----------------	-----------------	----------------

MB Correction

The items in bold italics have been corrected or added.

Modified Article: Decal – Original Position		Prepared by: Y.Okunishi	
From: Technical Service Dept., GTS Division			
Reason for Modification:	<input type="checkbox"/> Parts catalog correction <input type="checkbox"/> To facilitate assembly <input type="checkbox"/> Part standardization	<input type="checkbox"/> Vendor change <input type="checkbox"/> To improve reliability <input checked="" type="checkbox"/> Other	<input type="checkbox"/> To meet standards ()
Modification Schedule	When the current stock of old parts runs out.		

Old part number	New part number	Description	Qty	Int	Page	Index	Note
H5454350	H5451350	Decal – Original Position	1 – 1	O/O	3	14	*

* ***An explanation of how to set the leading edges of the documents is added on the decal.***

RC	REBV	ASIA	
*	*	*	

Model: Schmidt1		Date: 31-Mar-99	No.: 4
Modified Article: Upper Rear Cover		Prepared by: Y.Okunishi	
From: GTSS Field Information Dept.			
Reason for Modification:	<input type="checkbox"/> Parts catalog correction <input type="checkbox"/> To facilitate assembly <input checked="" type="checkbox"/> Part standardization	<input type="checkbox"/> Vendor change <input type="checkbox"/> To improve reliability <input type="checkbox"/> Other	<input type="checkbox"/> To meet standards ()
Modification Schedule	When the current stock of old parts runs out.		

Old part number	New part number	Description	Qty	Int	Page	Index	Note
H5454221	H5454224	Upper Rear Cover	1 – 1	O/O	3	21	

RC	REBV	ASIA	
*	*	*	

Reissued: 30-Apr-99

Model: Schmidt1	Date: 31-Mar-99	No.: MH545005a
-----------------	-----------------	----------------

MB Correction

The items in bold italics have been corrected or added.

Modified Article: FCU (Change of ROM)		Prepared by: Y.Okunishi	
From: Technical Service Dept., GTS Division			
Reason for Modification:	<input type="checkbox"/> Parts catalog correction <input type="checkbox"/> To facilitate assembly <input type="checkbox"/> Part standardization	<input type="checkbox"/> Vendor change <input checked="" type="checkbox"/> To improve reliability <input checked="" type="checkbox"/> Other	<input checked="" type="checkbox"/> To meet standards (Ireland)
Modification Schedule	From the March production run.		

Old part number	New part number	Description	Qty	Int	Page	Index	Note
H5456120P	H5456120Q	PCB – FCU-US	1 – 1	X/O	21	13	
H5456135G	H5456135H	PCB – FCU-EU/ASIA	1 - 1	X/O	21	13	
(H5457200G)	(H5457200H)	(Program)		(X/O)			

Reasons for the change:

- Correction of the following problem
 - When the handset is picked up just after starting to ring, the LCD display does not change from READY. No problem with the conversation.
- To meet regulations for Ireland
- Per request from Norway (Parameter for auto dialing)
- Power control for the fusing fan is changed.



(Printing)(Ready mode)----->(Energy saver mode)
 Current: 100%----->15%----->OFF----->
 New: 80% ----->66%----->OFF----->



This reduces noise generated by the fan.

See the RAM address table below.

Address	Current	New
800604h	07(H)	00(H)
800605h	02(H)	00(H)
800606h	05(H)	00(H)
800607h	27(H)	00(H)
800608h	FF(H)	00(H)
800609h	01(H)	14(H)
80060ah	01(H)	20(H)
80060bh	01(H)	14(H)
80060ch	01(H)	20(H)
80060dh	01(H)	04(H)
80060eh	01(H)	05(H)
80060fh	4E(H)	25(H)
800610h	5F(H)	5F(H)
800611h	82(H)	79(H)
800612h	0E(H)	25(H)
80032Ch	1B(H)	0B(H)
80042dh	14(H)	08(H)

NOTES: **Other settings must not be changed.** The above addresses affect The temperature of the fusing unit.

The table will be changed for the next version of the ROM.

RC	REBV	ASIA	
*	*	*	

Model: Schmidt1		Date: 31-Mar-99	No.: 6
Modified Article: Lower Scanner Unit		Prepared by: Y.Okunishi	
From: GTSS Field Information Dept.			
Reason for Modification:	<input type="checkbox"/> Parts catalog correction <input checked="" type="checkbox"/> To facilitate assembly <input type="checkbox"/> Part standardization	<input type="checkbox"/> Vendor change <input type="checkbox"/> To improve reliability <input type="checkbox"/> Other	<input type="checkbox"/> To meet standards ()
Modification Schedule	When current stock of old part runs out.		

Old part number	New part number	Description	Qty	Int	Page	Index	Note
H5451507	H5451607	Drive Shaft	1 – 1	X/X	9	13	*1
54472681		Snap Ring	1 – 0		9	---	*2
	H5153543	E-Ring – JR-E4	4 - 5				*3

Notes:

- *1: When you change the drive shaft, you need to change the snap ring to an E-ring also.
 The snap ring is thicker than the E-ring. So, the snap ring cannot fit the notch on the new drive shaft.
- *2: The same snap ring as for index no. 20 on page 19 was used.
- *3: The same E-ring as for index no. 3 will be used for the new drive shaft.

RC	REBV	ASIA	
*	*	*	

Model: Schmidt 1		Date: 30-Apr-99	No.: MH545007
Modified Article: Operation Manual – Win Styler		Prepared by: Y.Okunishi	
From: Technical Service Dept. GTS Division			
Reason for Modification:	<input checked="" type="checkbox"/> Parts catalog correction <input type="checkbox"/> To facilitate assembly <input type="checkbox"/> Part standardization	<input type="checkbox"/> Vendor change <input type="checkbox"/> To improve reliability <input type="checkbox"/> Other	<input type="checkbox"/> To meet standards ()
Modification Schedule:			

Old part number	New part number	Description	Qty	Int	Page	Index	Note
H5457214	H5457215	Operation Manual – W.S. (US)	1 - 1		1-2	29	
H5457216	H5457214	Operation Manual – W.S. (EU)	1 - 1		1-2	29	

RC	REBV	ASIA	
*	*	*	

Model: Schmidt1		Date: 30-Apr-99	No.: MH545008
Modified Article: FCU (Change of ROM)		Prepared by: Y.Okunishi	
From: Technical Service Dept., GTS Division			
Reason for Modification:	<input type="checkbox"/> Parts catalog correction <input type="checkbox"/> To facilitate assembly <input type="checkbox"/> Part standardization	<input type="checkbox"/> Vendor change <input checked="" type="checkbox"/> To improve reliability <input checked="" type="checkbox"/> Other	<input type="checkbox"/> To meet standards ()
Modification Schedule	From April production run.		

Old part number	New part number	Description	Qty	Int	Page	Index	Note
H5456120Q	H5456120R	PCB – FCU-US	1 – 1	O/O	21	13	
H5456135H	H5456135J	PCB – FCU-EU/ASIA	1 - 1	O/O	21	13	
(H5457200H)	(H5457200J)	(Program)		(X/O)			

Reasons for the change:

- Correction of the following bugs
 - “SID” was “PWD” on the protocol dump list.
 - The symbol rate for Rx with V.34 was incorrect on the protocol dump list.
- Checking that the auto call is not active will not be done in manual Tx mode (For France)
- A new bit switch is assigned for fusing fan control.
New switch = Printer SW 0F Bit 1

(Printing)(Ready mode)----->(Energy saver mode)

Old setting : 100%----->15%----->OFF----->

Current setting → Bit 1=0: 80% ----->66%----->OFF----->

Special setting → Bit 1=1: 80% ----->15%----->OFF----->



If the customer is not satisfied with the current noise level generated by the fan, please try the “Special setting” above.
See the RAM address table on the next page.

Model: Schmidt1	Date: 30-Apr-99	No.: MH545008
-----------------	-----------------	---------------

Address	Current	Special
800604h	00(H)	00(H)
800605h	00(H)	00(H)
800606h	00(H)	00(H)
800607h	14(H)	14(H)
800608h	20(H)	FF(H)
800609h	14(H)	27(H)
80060ah	20(H)	FF(H)
80060bh	14(H)	04(H)
80060ch	20(H)	05(H)
80060dh	04(H)	04(H)
80060eh	05(H)	05(H)
80060fh	3F(H)	3F(H)
800610h	56(H)	56(H)
800611h	81(H)	81(H)
800612h	2D(H)	1E(H)
80032Ch	0B(H)	0B(H)
80033Ah	23(H)	13(H)
80042Dh	08(H)	08(H)
80042Eh	8A(H):110V 82(H):220V	8A(H):110V 82(H):220V
80042Fh	82(H):110V 79(H):220V	8A(H):110V 82(H):220V

NOTES: *Other settings must not be used. The above addresses affect the temperature of the fusing unit.

*Do not change the new ROM to the old ROM (H5457200H or older).
If you do, you have to reset the RAM.

Model: Schmidt1		Date: 31-May-99	No.: MH545009
Modified Article: Electrical section		Prepared by: Y.Okunishi	
From: Technical Service Dept., GTS Division			
Reason for Modification:	<input checked="" type="checkbox"/> Parts catalog correction	<input type="checkbox"/> Vendor change	<input type="checkbox"/> To meet standards ()
	<input type="checkbox"/> To facilitate assembly	<input type="checkbox"/> To improve reliability	
	<input type="checkbox"/> Part standardization	<input type="checkbox"/> Other	
Modification Schedule	From May production run.		

Old part number	New part number	Description	Qty	Int	Page	Index	Note
H5044901		Cap – Tel Socket	1 – 0		21	15	

RC	REBV	ASIA	
*	*	*	

Model: Schmidt1		Date: 30-Jun-99	No.: MH545010
Modified Article: Parts Catalog Correction		Prepared by: K. Misugi	
From: Technical Service Dept., GTS Division			
Reason for Modification:	<input checked="" type="checkbox"/> Parts catalog correction <input type="checkbox"/> To facilitate assembly <input type="checkbox"/> Part standardization	<input type="checkbox"/> Vendor change <input type="checkbox"/> To improve reliability <input type="checkbox"/> Other	<input type="checkbox"/> To meet standards ()

This MB is to inform of corrections to the Parts Catalog.

Old part number	New part number	Description	Qty	Int	Page	Index	Note
H5453154	H5453157	Separation Pad Cover	1→1		23	5	
	H5454461	LCD Decal - Gestetner	0→1		5	---	
	H5454463	LCD Decal - Nashua	0→1		5		
	H5454464	LCD Decal - Rex Rotary	0→1		5		

NOTE:

The LCD decals on the operation panel for Gestetner, Nashuatec, and Rex Rotary are available as service parts.

RC	RE	ASIA	
*	*	*	

Model: Schmidt 1		Date: 15-Jul-99	No.: MH545011
Modified Article: PFU		Prepared by: Y.Okunishi	
From: Technical Service Dept., GTS Division			
Reason for Modification:	<input type="checkbox"/> Parts catalog correction <input type="checkbox"/> To facilitate assembly <input type="checkbox"/> Part standardization	<input type="checkbox"/> Vendor change <input checked="" type="checkbox"/> To improve reliability <input type="checkbox"/> Other	<input type="checkbox"/> To meet standards (Shape of the connector is slightly changed for ease of use in installation of the PFU.)
Schedule:	From August production run		

Old part number	New part number	Description	Q'ty	Int	Page	Index	Note
H5455115	H5455137	Main Harness - 2nd	1 - 1	O/O	23	20	

RC	REBV	ASIA
*	*	*

Model: Schmidt 1 (US)		Date: 15-Jul-99	No.: MH545012
Modified Article: FCU		Prepared by: Y.Okunishi	
From: Technical Service Dept., GTS Division			
Reason for Modification:	<input type="checkbox"/> Parts catalog correction <input type="checkbox"/> To facilitate assembly <input checked="" type="checkbox"/> Part standardization	<input type="checkbox"/> Vendor change <input type="checkbox"/> To improve reliability <input type="checkbox"/> Other	<input type="checkbox"/> To meet standards
Schedule:	After stock of the old part runs out		

Old part number	New part number	Description	Q'ty	Int	Page	Index	Note
H5456120R	H5456120S	PCB - FCU - US	1 - 1	O/O	21	13	
(H5187101)	(H5457113)	HIC - XK1	(1 - 1)	O/O			

RC	REBV	ASIA
*		

Model: Schmidt3		Date: 31-Oct-99	No.: MH547001
Modified Article: SiG4 PCB Board		Prepared by: K. Misugi	
From: Technical Service Dept., GTS Division			
Reason for Modification:	<input type="checkbox"/> Parts catalog correction <input type="checkbox"/> To facilitate assembly <input type="checkbox"/> Part standardization	<input type="checkbox"/> Vendor change <input type="checkbox"/> To improve reliability <input checked="" type="checkbox"/> Other	<input type="checkbox"/> To meet standards ()

Old part number	New part number	Description	Q'ty	Int	Page	Index	Note
H5476170G	H5476170F	PCB - SIG4 - EUR/Asia	1 - 1	O/O	3	30	
H5476180F	H5476180E	PCB - SIG4 - US	1 - 1	O/O	3	30	

NOTE: Please refer to RTB RH547001 for details about the modification.

Model: Schmidt 3		Date: 15-Jan-00	No.: MH545013
Modified Article: Separation Pad Ass'y		Prepared by: Y.Okunishi	
From: Technical Service Dept., GTS Division			
Reason for Modification:	<input type="checkbox"/> Parts catalog correction <input type="checkbox"/> To facilitate assembly <input type="checkbox"/> Part standardization	<input type="checkbox"/> Vendor change <input type="checkbox"/> To improve reliability <input checked="" type="checkbox"/> Other	<input type="checkbox"/> To meet standards ()
Modification Schedule	From July 1999 production run		

The plastic mylar of the Separation Pad Ass'y has been changed to extend the life of the separation pad.

Old part number	New part number	Description	Qty	Int	Page	Index	Note
H5453140	H5453155	Separation Pad Ass'y	1	O/O	1-22	3	

RC	REBV	ASIA	
*	*	*	

Model: Schmidt 1, 3		Date: 11-May-00	No.: MH545014
Modified Article: Paper Transfer		Prepared by: Y.Okunishi	
From: Technical Services Dept., GTS Division			
Reason for Modification:	<input type="checkbox"/> Parts catalog correction	<input type="checkbox"/> Vendor change	<input type="checkbox"/> To meet standards ()
	<input type="checkbox"/> To facilitate assembly	<input type="checkbox"/> To improve reliability	
	<input checked="" type="checkbox"/> Part standardization	<input type="checkbox"/> Other	
Modification Schedule:	From when the old part runs out of stock		

Old part number	New part number	Description	Q'ty	Int	Page	Index	Note
H5455116	H5455138	Main Harness	1-1	O/O	17	28	

RC	REBV	ASIA	
*	*	*	

Model: Schmidt 1, 3		Date: 11-May-00	No.: MH545015
Modified Article: Drive Section		Prepared by: Y.Okunishi	
From: Technical Services Dept., GTS Division			
Reason for Modification:	<input type="checkbox"/> Parts catalog correction <input type="checkbox"/> To facilitate assembly <input checked="" type="checkbox"/> Part standardization	<input type="checkbox"/> Vendor change <input type="checkbox"/> To improve reliability <input type="checkbox"/> Other	<input type="checkbox"/> To meet standards ()
Modification Schedule:	From when the old part runs out of stock		

Old part number	New part number	Description	Q'ty	Int	Page	Index	Note
H5455036	H5355063	Paper Feed Motor	1-1	O/O	25	20	

RC	REBV	ASIA	
*	*	*	

Model: I-Schmidt 3, ISDN G4 Option		Date: 11-May-00	No.: MH545016
Modified Article: ISDN		Prepared by: Y.Okunishi	
From: Technical Services Dept., GTS Division			
Reason for Modification:	<input type="checkbox"/> Parts catalog correction <input type="checkbox"/> To facilitate assembly <input checked="" type="checkbox"/> Part standardization	<input type="checkbox"/> Vendor change <input type="checkbox"/> To improve reliability <input type="checkbox"/> Other	<input type="checkbox"/> To meet standards ()
Modification Schedule:	From the June 2000 production run		

Old part number	New part number	Description	Q'ty	Int	Page	Index	Note
	H5354406	Sheet – G4 Unit Cover	0-1				*1
H5484200	H5364200	G4 Unit Cover	1-1	O/O	3	31	*2

*1: A sheet is attached on the screw hole of the G4 Unit Cover for the new product.

(This sheet does not affect the performance of the I-Schmidt 3.)

* The shape around screw hole of the G4 Unit Cover is slightly changed.

RC	REBV	ASIA	
	*		

Model: FX4/6, FR4/6, LFO, Schmidt1/3 (for Europe)		Date: 18-Jul-00	No.: MFmul014
Modified Article: Fusing Unit		Prepared by: Y. Okunishi	
From: Technical Services Dept., GTS Division			
Reason for Modification:	<input type="checkbox"/> Parts catalog correction <input checked="" type="checkbox"/> To facilitate assembly <input type="checkbox"/> Part standardization	<input type="checkbox"/> Vendor change <input type="checkbox"/> To improve reliability <input type="checkbox"/> Other	<input type="checkbox"/> To meet standards ()
Modification Schedule:	From when the old part runs out of stock		

Old part number	New part number	Description	Q'ty	Int	Page	Index	Note
H5165018	H5355055	Thermofuse (Europe)	1-1	O/O	14	13	*1

*1: The part catalog page and Index number are for the Schmidt 1 Parts Catalog.

RC	REBV	ASIA	
*	*	*	

Model: Schmidt1, 3		Date: 03-Aug-00	No.: MH545017
Modified Article: Paper Cassette		Prepared by: Y. Okunishi	
From: Technical Services Dept., GTS Division			
Reason for Modification:	<input type="checkbox"/> Parts catalog correction <input type="checkbox"/> To facilitate assembly <input checked="" type="checkbox"/> Part standardization	<input type="checkbox"/> Vendor change <input type="checkbox"/> To improve reliability <input type="checkbox"/> Other	<input type="checkbox"/> To meet standards ()
Modification Schedule:	After the old part becomes out of stock		

Old part number	New part number	Description	Q'ty	Int	Page	Index	Note
H5453102	H5353102	Bottom Plate	1-1	O/O	10	2	*1

*1: Page and Index are for the Schmidt 1 parts catalog.



Reissued: 08-Dec-00

Model: Schmidt1, Schmidt3 (Ricoh model)	Date: 29-Nov-00	No.: MH545018a
---	-----------------	----------------

MB Correction

The items in bold italics have been corrected or added.

Modified Article: Operation Panel		Prepared by: Y. Okunishi	
From: Technical Services Dept., GTS Division			
Reason for Modification:	<input type="checkbox"/> Parts catalog correction <input type="checkbox"/> To facilitate assembly <input type="checkbox"/> Part standardization	<input type="checkbox"/> Vendor change <input type="checkbox"/> To improve reliability <input checked="" type="checkbox"/> Other (For new part)	<input type="checkbox"/> To meet standards ()
Modification Schedule:	See below.		

Old part number	New part number	Description	Q'ty	Int	Page	Index	Note
	H5454467	Decal – LCD – FAX1900L	1			-	*
	H5474650	Decal – LCD – FAX2900L	1				*
	H5454650	Decal – LCD – FAX2000L	1				**

The above parts have been registered as service parts.

Note:
****The new part will be available in about 3 months.***
*****The part is available at SPC now.***

Reissued: 08-May-01

Model: Model S-2	Date: 17-Apr-01	No.: MH545019a
------------------	-----------------	----------------

MB Correction

The items in bold italics have been corrected or added.

Modified Article: NCU (<i>Europe/Asia</i>)		Prepared by: Y. Okunishi	
From: Technical Services Dept., GTS Division			
Reason for Modification:	<input checked="" type="checkbox"/> Parts catalog correction	<input type="checkbox"/> Vendor change	<input type="checkbox"/> To meet standards ()
	<input type="checkbox"/> To facilitate assembly	<input type="checkbox"/> To improve reliability	
	<input type="checkbox"/> Part standardization	<input type="checkbox"/> Other ()	
Modification Schedule:	From first production run		

Please correct your Parts Catalogs as follows:

Incorrect part number	Correct part number	Description	Q'ty	Int	Page	Index	Note
54886151	54886156	PCB – NCU – <i>EU/Asia</i>	1 - 1	X/O	20	13	*

Note:



*All Model S-2 production units ***for Europe/Asia*** contain only the new 54886156 PCB.

Reissued: 22-May-02

Model: Model S-1,S-1CD, S-2, S-3, S-4	Date: 25-Apr-01	No.: MH545020a
---------------------------------------	-----------------	----------------

MB Correction

The items in bold italics have been corrected or added.

Modified Article: Fusing Unit		Prepared by: K.Moriizumi	
From: Technical Services sec. Service Planning Dept.			
Reason for Modification:	<input checked="" type="checkbox"/> Parts catalog correction <input type="checkbox"/> To facilitate assembly <input type="checkbox"/> Part standardization	<input type="checkbox"/> Vendor change <input type="checkbox"/> To improve reliability <input type="checkbox"/> Other ()	<input type="checkbox"/> To meet standards ()
Modification Schedule:			

Please apply the following P/N correction to your Parts Catalogs. Please note that this correction applies to the ***entire Schmidt series (Model S-1, S-1CD, S-2, S-3, S-4)***.

Incorrect part number	Correct part number	Description	Q'ty	Int	Page	Index	Note
H5452137	H5152137	Bearing - Hot Roller			1-15	23	*

* The correct P/N above is the same as for index 34.

Model: Model S-1, S-2, S-3		Date: 30-May-01	No.: MH545021
Modified Article: Paper Feed Drive		Prepared by: Y. Okunishi	
From: Technical Services Dept., GTS Division			
Reason for Modification:	<input type="checkbox"/> Parts catalog correction <input type="checkbox"/> To facilitate assembly <input type="checkbox"/> Part standardization	<input type="checkbox"/> Vendor change <input type="checkbox"/> To improve reliability <input type="checkbox"/> To meet standards	<input checked="" type="checkbox"/> Other (Margin up for performance of the paper-feeding)
Modification Schedule:	From July 2001 production		

Old part number	New part number	Description	Q'ty	Int	Page	Index	Note
H5455077	H5465070	Magnetic Clutch	1-1	X/O	25	19	S-1

Model: Schmidt3		Date: 14-Sep-01	No.: MH545022
Modified Article: LSI on the FCU board		Prepared by: K. Moriizumi	
From: Technical Services Dept., GTS Division			
Reason for Modification:	<input type="checkbox"/> Parts catalog correction <input type="checkbox"/> To facilitate assembly <input checked="" type="checkbox"/> Part standardization	<input type="checkbox"/> Vendor change <input type="checkbox"/> To improve reliability <input type="checkbox"/> Other	<input type="checkbox"/> To meet standards ()

Please correct your Component Lists for the FCU board as follows:

Old part number	New part number	Description	Q'ty	Int	Page	Index	Note
H5477105	H5357105	LSI - FCIP05-RF5A224A	1	O/O	-	-	

Note: The following are the part numbers for the FCU board:

USA: H5476111

Europe/Asia: H5476101

Model: Schmidt Series		Date: 19-Dec-01	No.: MH545023
Modified Article: ADF Feed Roller Collar		Prepared by: K.Moriizumi	
From: Technical Service Dept., GTS Division			
Reason for Modification:	<input type="checkbox"/> Parts catalog correction <input checked="" type="checkbox"/> To facilitate assembly <input type="checkbox"/> Part standardization	<input type="checkbox"/> Vendor change <input type="checkbox"/> To improve reliability <input type="checkbox"/> Other	<input type="checkbox"/> To meet standards ()

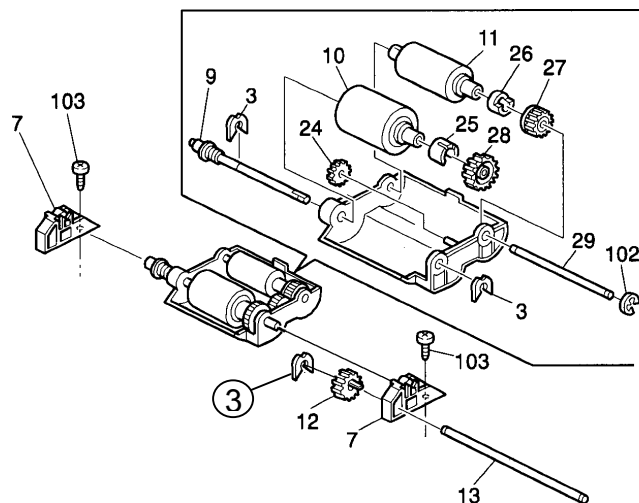
Schmidt 4 only

Old part number	New part number	Description	Q'ty	Int	Page	Index	Note
H5351040D	H5351040E	ADF Feeder Unit	1	O/O	9	8	
H5351556	H5351530	Feed Roller Collar	1	O/O	9	25	

Model: Schmidt Series		Date: 21-Dec-01	No.: MH545024
Modified Article: ADF Feed Shaft		Prepared by: K. Moriizumi	
From: Technical Services Dept., GTS Division			
Reason for Modification:	<input type="checkbox"/> Parts catalog correction <input type="checkbox"/> To facilitate assembly <input type="checkbox"/> Part standardization	<input type="checkbox"/> Vendor change <input checked="" type="checkbox"/> To improve reliability <input type="checkbox"/> Other	<input type="checkbox"/> To meet standards ()

For S-4 (H535/H536/H537)

Old part number	New part number	Description	Q'ty	Int	Page	Index	Note
H5351543	H5351544	Feed Shaft	1	X/O	9	13	
	H5153543	E-ring – Jre4	1		9	3	



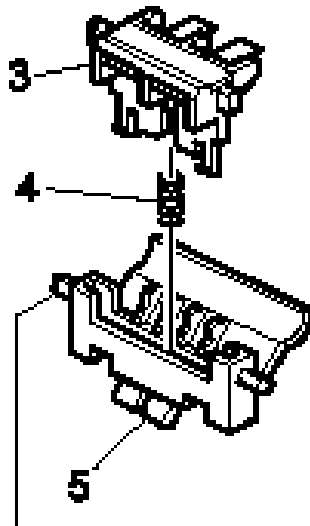
Model: Schmidt Series		Date: 25-Sep-02	No.: MH545025
Modified Article: Separation Pad		Prepared by: K. Moriizumi	
From: Technical Services sec. Service Planning Dept.			
Reason for Modification:	<input type="checkbox"/> Parts catalog correction <input type="checkbox"/> To facilitate assembly <input type="checkbox"/> Part standardization	<input type="checkbox"/> Vendor change <input type="checkbox"/> To improve reliability <input checked="" type="checkbox"/> Other	<input type="checkbox"/> To meet standards ()

To ensure that paper jams and misfeeds do not occur at the paper entrance area, the Separation Pad has been changed, and a Separation Unit has been newly registered (consisting of the pad, holder, and spring).

For further details, see RTB #RH545020.

Schmidt 1/2 (only for EU)

Old part number	New part number	Description	Q'ty	Int	Page	Index	Note
H5453155	H5463111	Separation Pad - SS	1-1	O/O	23	3	
	H5463101	Separation Unit - SS			23	23	



Reissued: 15-Nov-02

Model: Schmidt Series	Date: 8-Nov-02	No.: MH545026a
-----------------------	----------------	----------------

MB Correction

The items in bold italics have been corrected or added.

Modified Article: Scanner Base		Prepared by: K. Moriizumi	
From: Technical Services sec. Service Planning Dept.			
Reason for Modification:	<input type="checkbox"/> Parts catalog correction	<input type="checkbox"/> Vendor change	<input type="checkbox"/> To meet standards ()
	<input type="checkbox"/> To facilitate assembly	<input type="checkbox"/> To improve reliability	
	<input type="checkbox"/> Part standardization	<input checked="" type="checkbox"/> Other	

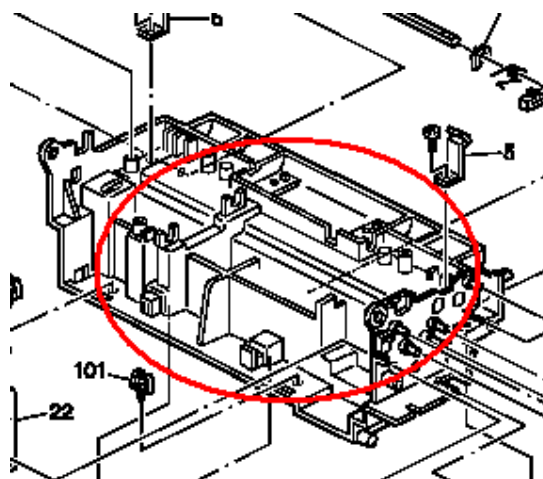
The Scanner Base has been registered as a Service Part.

For Schmidt1/2/3 (H545/H546/H547/**H548**)

Old part number	New part number	Description	Q'ty	Int	Page	Index	Note
-	H5451100	Scanner Base	1	-	11	-	

For Schmidt4 (H535/H536/H537)

Old part number	New part number	Description	Q'ty	Int	Page	Index	Note
-	H5351100	Scanner Base	1	-	11	-	



Model: Schmidt Series		Date: 8-Nov-02	No.: MH545027
Modified Article: Separation Pad		Prepared by: K. Moriizumi	
From: Technical Services sec. Service Planning Dept.			
Reason for Modification:	<input type="checkbox"/> Parts catalog correction <input type="checkbox"/> To facilitate assembly <input type="checkbox"/> Part standardization	<input type="checkbox"/> Vendor change <input type="checkbox"/> To improve reliability <input checked="" type="checkbox"/> Other	<input type="checkbox"/> To meet standards ()

The material of the Separation Pad has been changed to increase paper separation accuracy.

Schmidt 1/2 (only for EU)

Old part number	New part number	Description	Q'ty	Int	Page	Index	Note
H5453111	H5463112	Separation Pad - SS	1-1	O/O	23	3	

(Applied from September '02 production).

Model: Schmidt Series		Date: 27-Dec-02	No.: MH545028
Modified Article: Paper Feed Unit		Prepared by: K. Moriizumi	
From: Technical Services Sec. Service Planning Dept.			
Reason for Modification:	<input checked="" type="checkbox"/> Parts catalog correction <input type="checkbox"/> To facilitate assembly <input type="checkbox"/> Part standardization	<input type="checkbox"/> Vendor change <input type="checkbox"/> To improve reliability <input type="checkbox"/> Other	<input type="checkbox"/> To meet standards ()

For Model S-4 (H535/H536/H537)

Old part number	New part number	Description	Q'ty	Int	Page	Index	Note
H5355113		Main Harness 1	1		23	13 -> 20	
H5454222		Lock Spring Plate	1		23	20 -> 13	

This corrects the Index numbers of these parts in the Parts Catalog.

Model: Schmidt Series		Date: 28-Mar-06	No.: MH545029
Modified Article: Laser Unit		Prepared by: K.Moriizumi	
From: 1st Tech. Support Sec. Service Support Dept.			
Reason for Modification:	<input type="checkbox"/> Parts catalog correction <input checked="" type="checkbox"/> Vendor change <input type="checkbox"/> Other <input type="checkbox"/> To facilitate assembly <input type="checkbox"/> To improve reliability <input type="checkbox"/> To meet standards <input type="checkbox"/> Part standardization <input type="checkbox"/> Product Safety ()		

Old part number	New part number	Description	Q'ty	Int	Page	Index	Note
H5452600	H5452610	Laser Unit	1 – 1	O/O	13	1	