

Reissued: 05-Jul-01

Model: H1	Date: 02-Mar-01	No.: MH538001a
-----------	-----------------	----------------

## MB Correction

The items in bold italics have been corrected or added.

Modified Article: Parts Catalog Correction		Prepared by: A. Ishiyama	
From: Technical Services Dept., GTS Division			
Reason for Modification:	<input checked="" type="checkbox"/> Parts catalog correction <input type="checkbox"/> To facilitate assembly <input type="checkbox"/> Part standardization	<input type="checkbox"/> Vendor change <input type="checkbox"/> To improve reliability <input type="checkbox"/> Other ()	<input type="checkbox"/> To meet standards ( )
Modification Schedule:	All new parts are available from the first mass production.		

The following part numbers were printed incorrectly in the parts catalog.

Incorrect part number	Correct part number	Description	Q'ty	Int	Page	Index	Note
G0251212		Plate Spring	1→0		3	23	A
G0251213		Plate Spring - Left	1→0		3	28	A
	H5384121	Spacer - Cover	0→2		3	32	A
G0253018	H5383107	Left Bracket -Bottom Plate	1→1		11	1	
G0253202		Bottom Plate Ass'y - Paper Feed	1→0		11	34	*1
	H5384107	Insulating Sheet - Speaker	0→1		13	45	
H5381101	H5381120	ADF Base Frame	1→1		9	37	
H5381512	H5381612	Document Stopper	1→1		9	38	
H5381500	H5381600	ADF Upper Frame	1→1		9	45	
G0252489		Cover - Ground Plate	1→1		9	28	B
	H5381130	Anti-static Sheet - R1	1→1		9	54	B
	H5381131	Anti-static Sheet - R1	1→1		9	55	B
	H5384122	Spacer - Op-port	<b>0→2</b>		7	11	
H5383104	H5383108	Torque Limiter - Paper Feed	1→1		11	36	
G0252496		Shading Plate - ADF - Front	1→0		5	1	
G0251854		Laser Diode Unit	1→0		5	9	
	H5382046	Laser Unit	1→1		5	23	*2

\*1: As this is a complete assembled unit, it is not possible for SPC to supply this unit itself as spare parts. Therefore only child parts are available as spare parts.

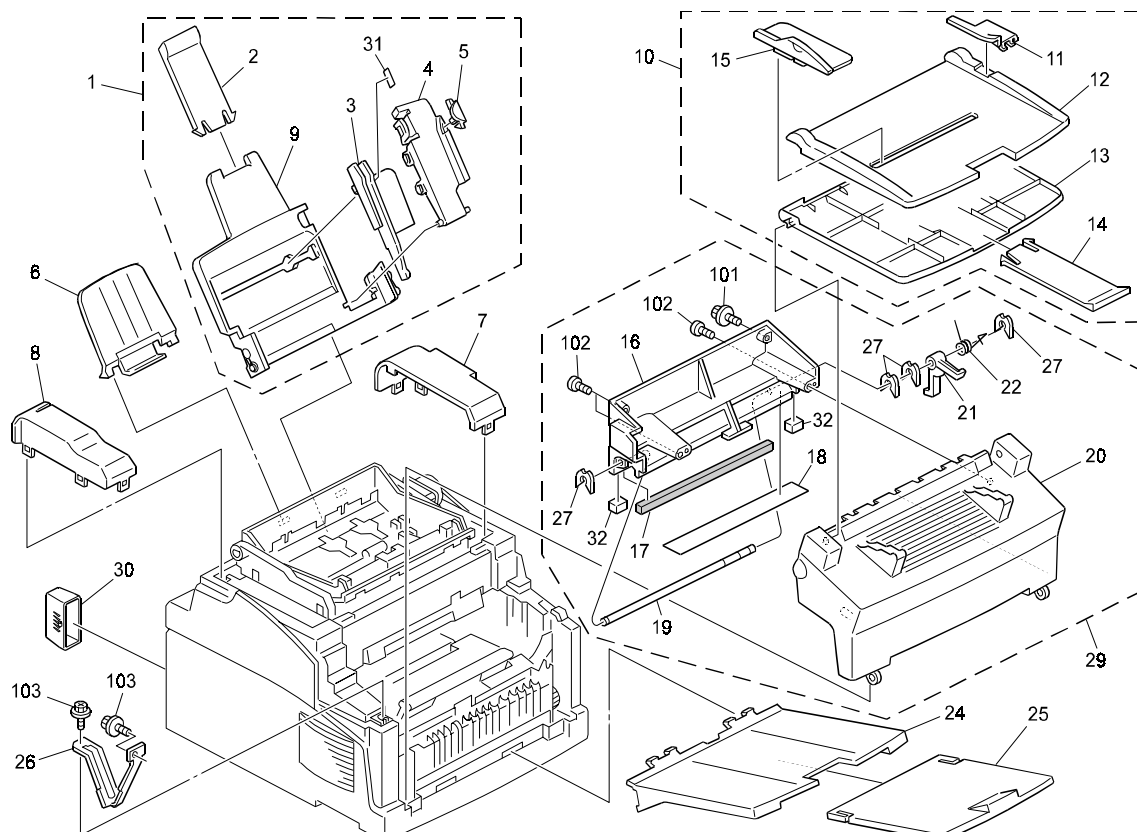
\*2: The component level of the laser unit has been corrected.

Model: H1

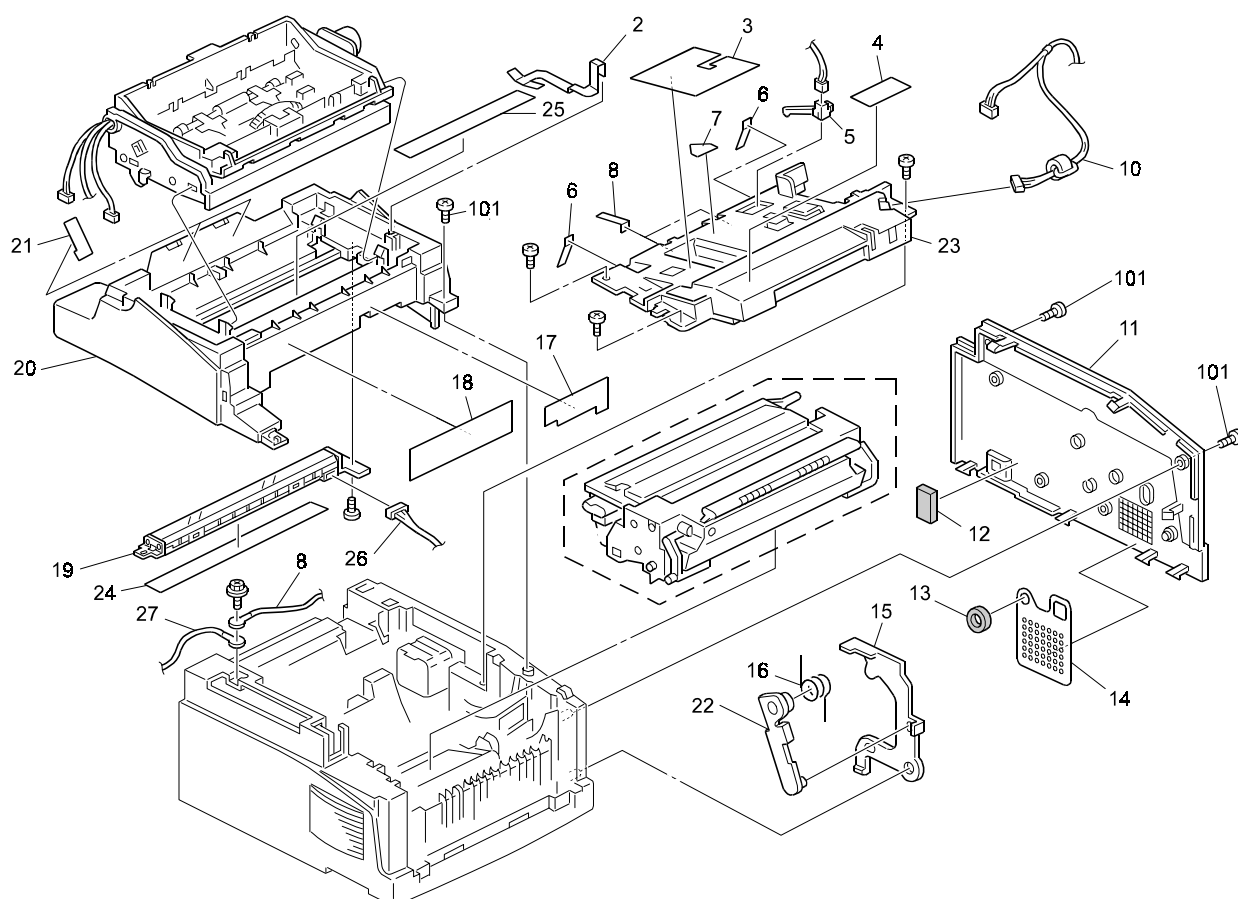
Date: 02-Mar-01

No.: MH538001

## 1.EXTERIOR 1 (H538)



## 2.EXTERIOR 2 (H538)

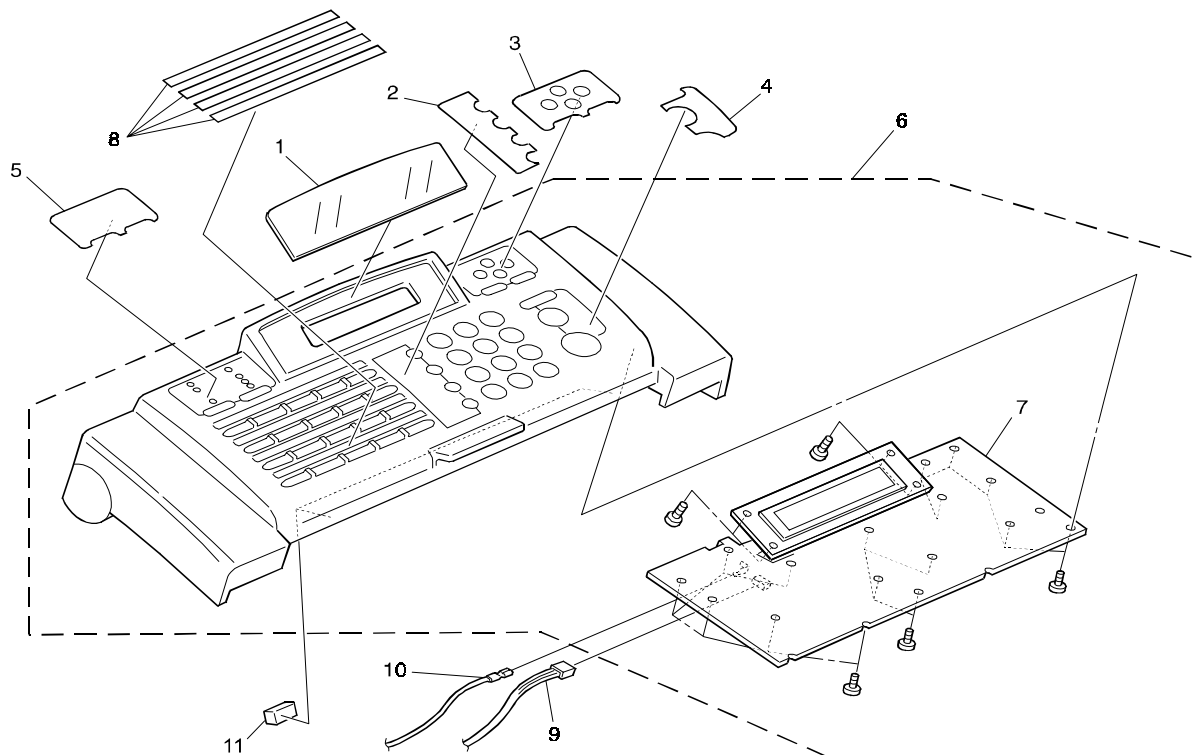


Model: H1

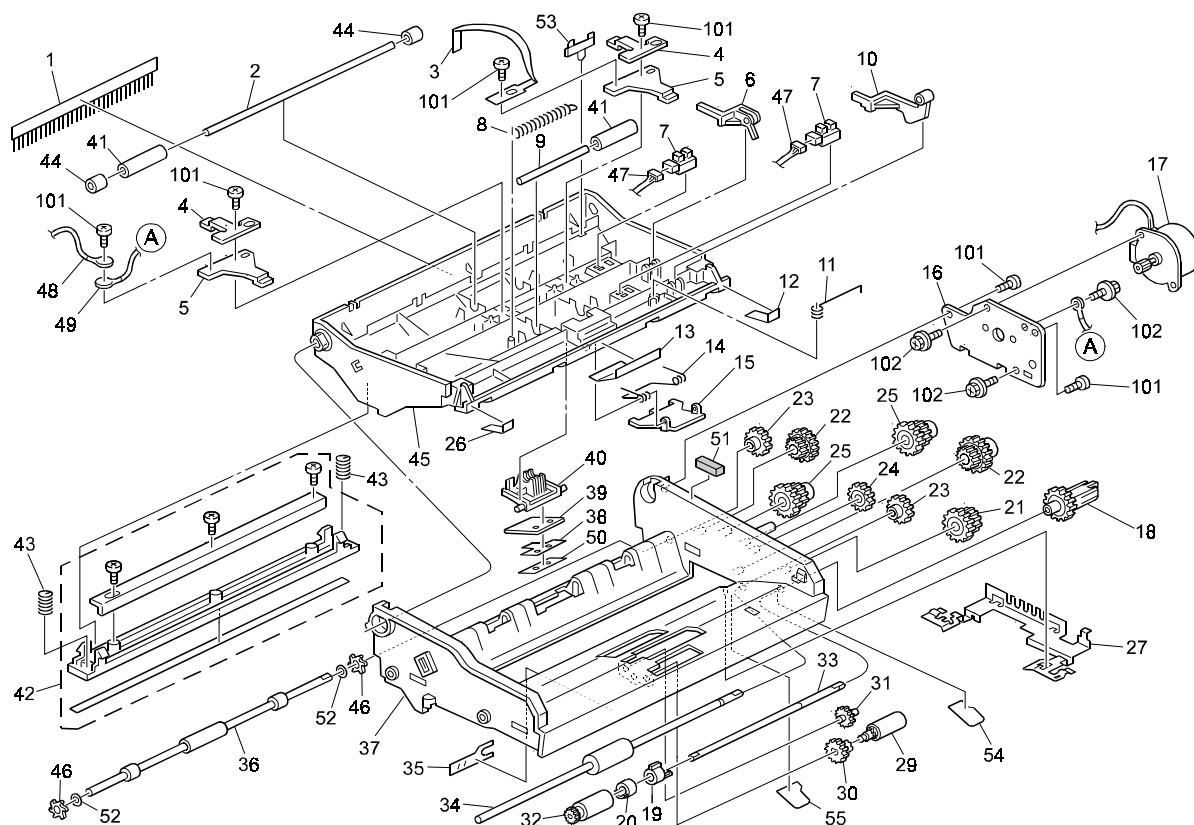
Date: 02-Mar-01

No.: MH538001

## 3. OPERATION PANEL (H538)



## 4. DF UNIT (H538)

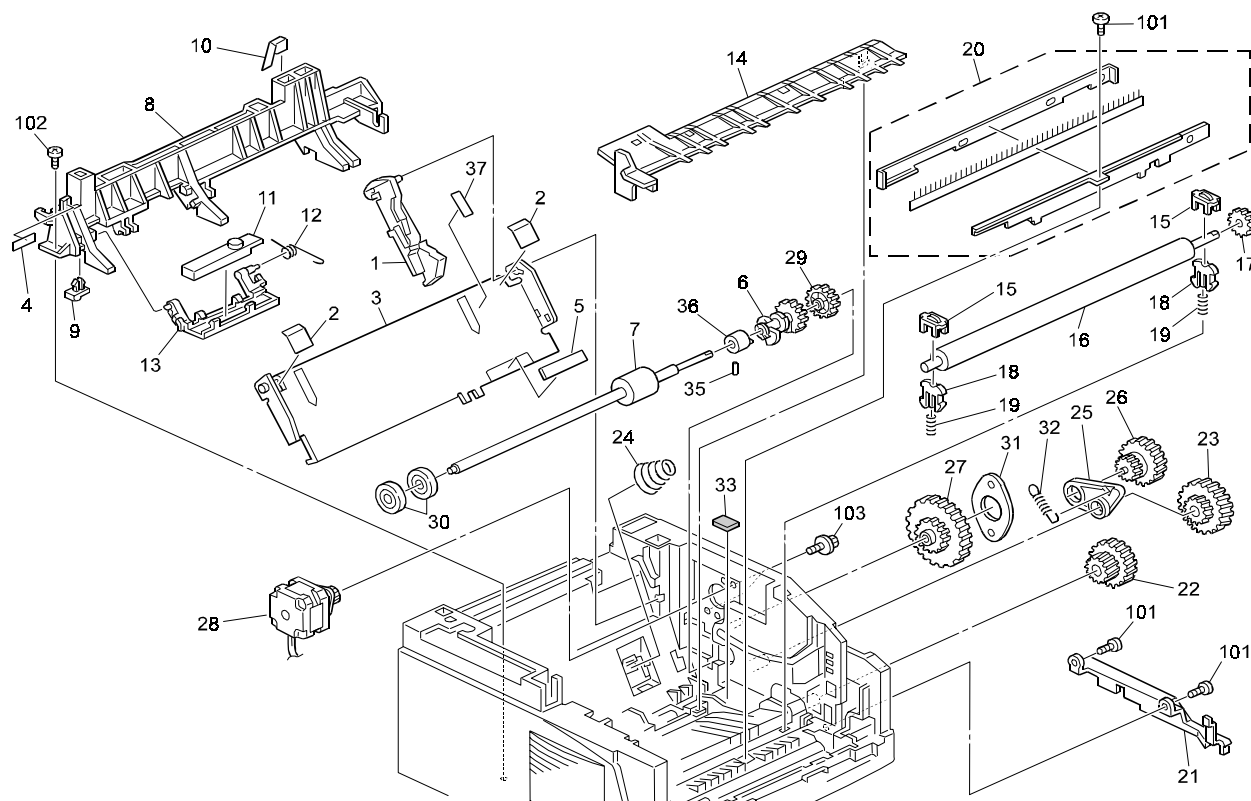


Model: H1

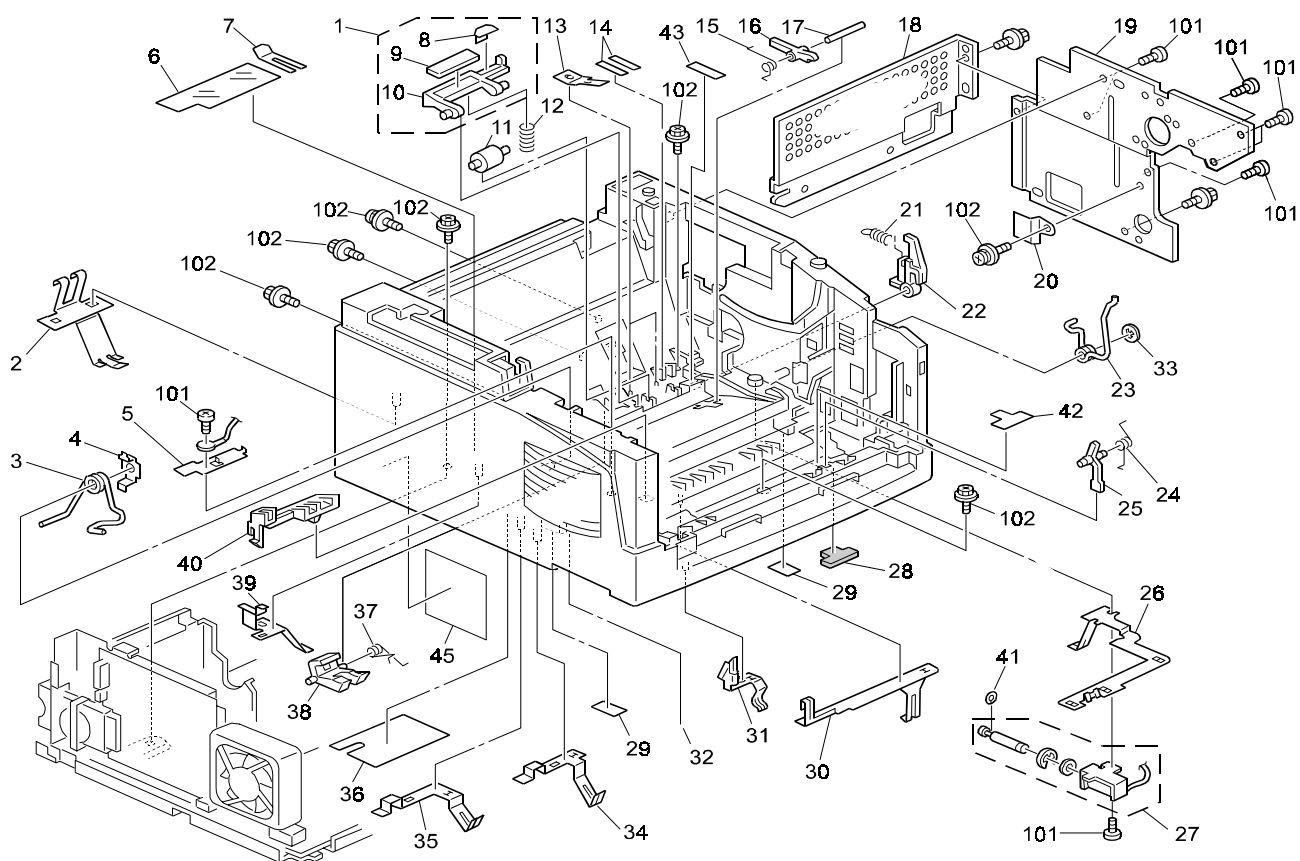
Date: 02-Mar-01

No.: MH538001

## 5. TRANSPORT SECTION 1 (H538)



## 6. TRANSPORT SECTION 2 (H538)



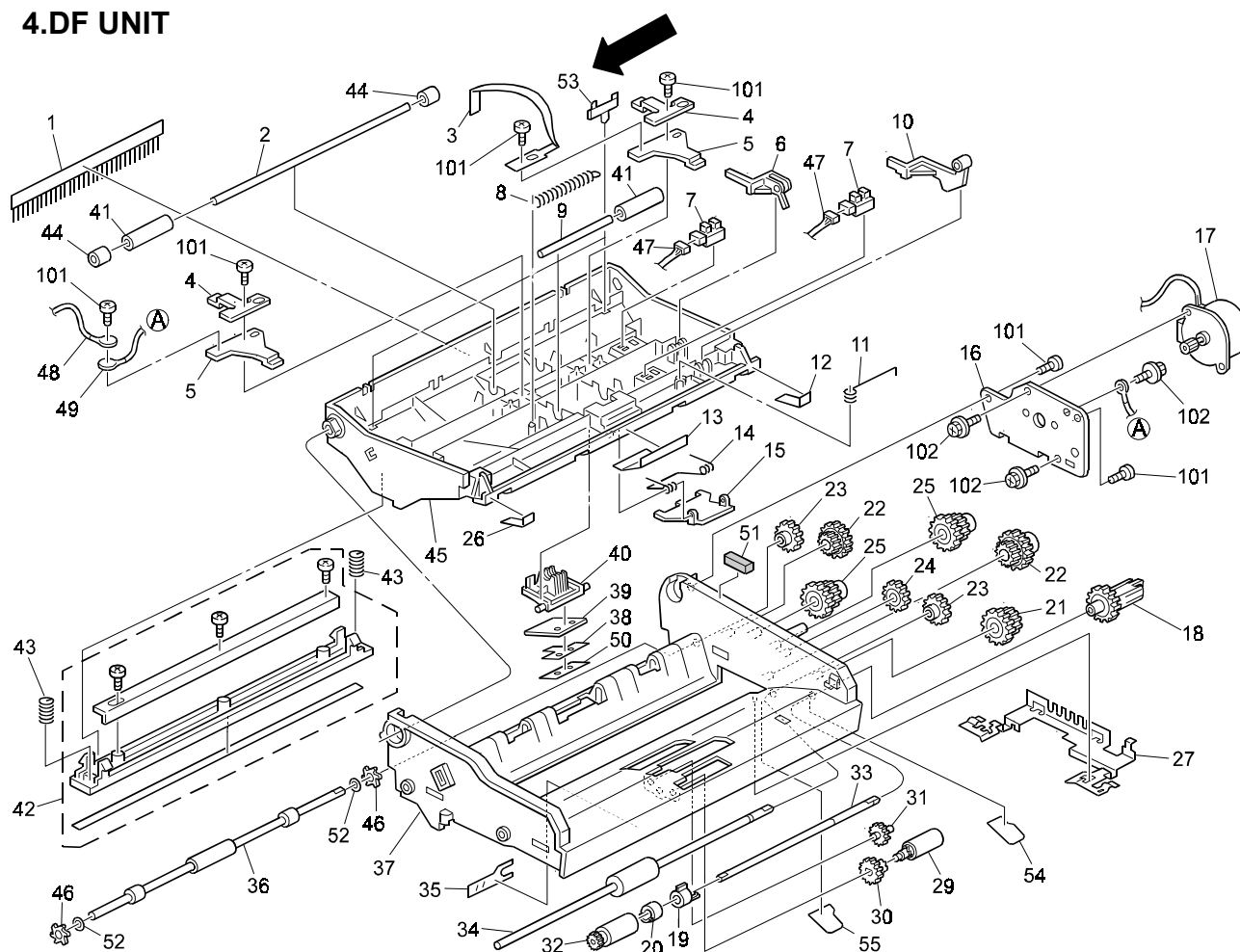
Model: H1		Date: 02-Mar-01	No.: MH538002
Modified Article: Fusing Unit		Prepared by: A. Ishiyama	
From: Technical Services Dept., GTS Division			
Reason for Modification:	<input type="checkbox"/> Parts catalog correction <input type="checkbox"/> To facilitate assembly <input type="checkbox"/> Part standardization	<input checked="" type="checkbox"/> Vendor change <input type="checkbox"/> To improve reliability <input type="checkbox"/> Other ( )	<input type="checkbox"/> To meet standards ( )
Modification Schedule:	From March 2001 production run		

Old part number	New part number	Description	Q'ty	Int	Page	Index	Note
H5382002D	H5382002E	Fusing Unit	1→1	X/O	15	7	
G0254521	H5382109	Thermofuse – 1	1→1	X/O	15	25	

Model: H1		Date: 06-Mar-01	No.: MH538003
Modified Article: ADF		Prepared by: A. Ishiyama	
From: Technical Services Dept., GTS Division			
Reason for Modification:	<input type="checkbox"/> Parts catalog correction <input type="checkbox"/> To facilitate assembly <input type="checkbox"/> Part standardization	<input type="checkbox"/> Vendor change <input checked="" type="checkbox"/> To improve reliability <input type="checkbox"/> Other ()	<input type="checkbox"/> To meet standards ( )
Modification Schedule:	From January 2001 production run		

Old part number	New part number	Description	Q'ty	Int	Page	Index	Note
	H5381571	Mylar – Document Exit	0→2	X/O	9	53	

## 4.DF UNIT



Model: H1		Date: 06-Mar-01	No.: MH538004
Modified Article: Document Table		Prepared by: A. Ishiyama	
From: Technical Services Dept., GTS Division			
Reason for Modification:	<input type="checkbox"/> Parts catalog correction <input type="checkbox"/> To facilitate assembly <input type="checkbox"/> Part standardization	<input type="checkbox"/> Vendor change <input checked="" type="checkbox"/> To improve reliability <input type="checkbox"/> Other ()	<input type="checkbox"/> To meet standards (      )
Modification Schedule:	From January 2001 production run		

Old part number	New part number	Description	Q'ty	Int	Page	Index	Note
G0252461	H5381552	Paper Tray - Back	1→1	X/O	3	13	

Model: H1		Date: 06-Mar-01	No.: MH538005
Modified Article: Registration Sensor		Prepared by: A. Ishiyama	
From: Technical Services Dept., GTS Division			
Reason for Modification:	<input type="checkbox"/> Parts catalog correction <input type="checkbox"/> To facilitate assembly <input type="checkbox"/> Part standardization	<input type="checkbox"/> Vendor change <input checked="" type="checkbox"/> To improve reliability <input type="checkbox"/> Other ()	<input type="checkbox"/> To meet standards (      )
Modification Schedule:	From January 2001 production run		

Old part number	New part number	Description	Q'ty	Int	Page	Index	Note
G0252452	H5381651	Actuator – Registration Sensor	1→1	X/O	9	6	



Model: H1		Date: 06-Mar-01	No.: MH538006
Modified Article: Base		Prepared by: A. Ishiyama	
From: Technical Services Dept., GTS Division			
Reason for Modification:	<input type="checkbox"/> Parts catalog correction <input type="checkbox"/> To facilitate assembly <input checked="" type="checkbox"/> Part standardization	<input type="checkbox"/> Vendor change <input type="checkbox"/> To improve reliability <input type="checkbox"/> Other ()	<input type="checkbox"/> To meet standards (      )
Modification Schedule:	After the old part is out of stock.		

Old part number	New part number	Description	Q'ty	Int	Page	Index	Note
G0251140	H5383302	Base	1→1		17	16	

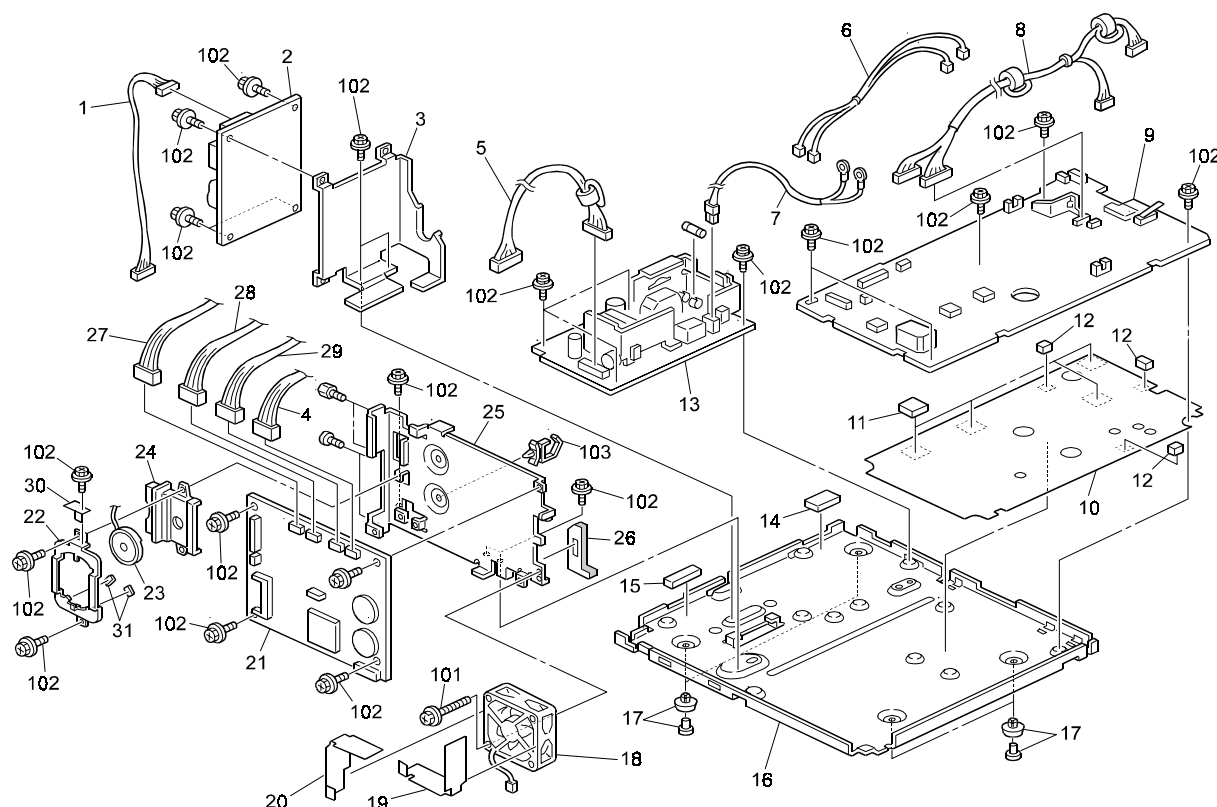
Model: H1		Date: 06-Mar-01	No.: MH538007
Modified Article: Paper Pick-up Cam		Prepared by: A. Ishiyama	
From: Technical Services Dept., GTS Division			
Reason for Modification:	<input type="checkbox"/> Parts catalog correction <input type="checkbox"/> To facilitate assembly <input type="checkbox"/> Part standardization	<input type="checkbox"/> Vendor change <input checked="" type="checkbox"/> To improve reliability <input type="checkbox"/> Other ()	<input type="checkbox"/> To meet standards (      )
Modification Schedule:	From March 2001 production run		

Old part number	New part number	Description	Q'ty	Int	Page	Index	Note
H5383102	H5383109	Paper Pick-up Cam	1→1	X/O	11	6	

Model: H1		Date: 06-Mar-01	No.: MH538008
Modified Article: Monitor Speaker Holder		Prepared by: A. Ishiyama	
From: Technical Services Dept., GTS Division			
Reason for Modification:	<input type="checkbox"/> Parts catalog correction <input type="checkbox"/> To facilitate assembly <input type="checkbox"/> Part standardization	<input type="checkbox"/> Vendor change <input checked="" type="checkbox"/> To improve reliability <input type="checkbox"/> Other ()	<input type="checkbox"/> To meet standards ( )
Modification Schedule:	From March 2001 production run		

Old part number	New part number	Description	Q'ty	Int	Page	Index	Note
H5383404	H5383408	Speaker Guide Plate	1→1		17	22	A
H5383403	H5383410	IC Card Guide	1→1		17	24	A
	H5383409	Holder – Speaker Guide Plate	0→1		17	30	A
	H5383412	Spacer – Speaker Holder	0→2		17	31	A
	04513006B	Tapping Screw – M3x6	2→3		17	102	A

## 8.ELECTRICAL SECTION (H538)



Model: H1		Date: 06-Mar-01	No.: MH538009
Modified Article: Paper Transport Section		Prepared by: A. Ishiyama	
From: Technical Services Dept., GTS Division			
Reason for Modification:	<input type="checkbox"/> Parts catalog correction <input type="checkbox"/> To facilitate assembly <input type="checkbox"/> Part standardization	<input type="checkbox"/> Vendor change <input checked="" type="checkbox"/> To improve reliability <input type="checkbox"/> Other ( )	<input type="checkbox"/> To meet standards ( )
Modification Schedule:	From March 2001 production run		

Old part number	New part number	Description	Q'ty	Int	Page	Index	Note
H5381560	H5383411	Feeler Plate – Paper Exit Sensor	1→1		13	42	

Model: H1		Date: 07-Aug-01	No.: MH538010
Modified Article: Paper Exit Tray Decals		Prepared by: A. Ishiyama	
From: Technical Services Dept., GTS Division			
Reason for Modification:	<input type="checkbox"/> Parts catalog correction <input type="checkbox"/> To facilitate assembly <input type="checkbox"/> Part standardization	<input type="checkbox"/> Vendor change <input checked="" type="checkbox"/> To improve reliability <input type="checkbox"/> Other ( )	<input type="checkbox"/> To meet standards ( )
Modification Schedule:	From August 2001 production run		

To facilitate easier installation of the Paper Exit Tray, two arrow decals have been newly registered for the tray attachment areas and mainframe (Decals S and L, respectively). Also, a Paper Exit Tray already containing Decal S has been newly registered.

Please refer to RTB 005 (RH538005) for details.

Old part number	New part number	Description	Q'ty	Int	Page	Index	Note
	H5382110	Paper Exit Tray with Decal	1		3	34	
	H5384401	Paper Exit Tray Decal - S	2		3	33	
	H5384400	Paper Exit Tray Decal - L	2		13	46	