

Model: Model PN-Fa / Model PN-Fc		Date: 8-Feb-07	No.: MH320001
Modified Article: Smart card		Prepared by: T. Shintani	
From: 1st Technical Support Sec. Service Support Dept.			
Reason for Modification:	<input checked="" type="checkbox"/> Parts catalog correction <input type="checkbox"/> To facilitate assembly <input type="checkbox"/> Part standardization	<input type="checkbox"/> Vendor change <input type="checkbox"/> To improve reliability <input type="checkbox"/> Other	<input type="checkbox"/> To meet standards ()
Modification Schedule:	From first mass production.		

**<H320/H321> (Model PN-Fa / Model PN-Fc)**

New part number	Description	Q'ty	Int	Page	Index	Note
H3209500	SMART CARD: MAINTENANCE	0→1	-	-	11	

**Change:** This part was added.

**Reason:** It was missing from the Parts Catalog.

Model: Model PN-Fa / Model PN-Fc		Date: 13-Jun-07	No.: MH320002
Modified Article: Smart card		Prepared by: T. Shintani	
From: 1st Technical Support Sec. Service Support Dept.			
Reason for Modification:	<input checked="" type="checkbox"/> Parts catalog correction <input type="checkbox"/> To facilitate assembly <input type="checkbox"/> Part standardization	<input type="checkbox"/> Vendor change <input type="checkbox"/> To improve reliability <input type="checkbox"/> Other	<input type="checkbox"/> To meet standards ()
Modification Schedule:	From first mass production.		

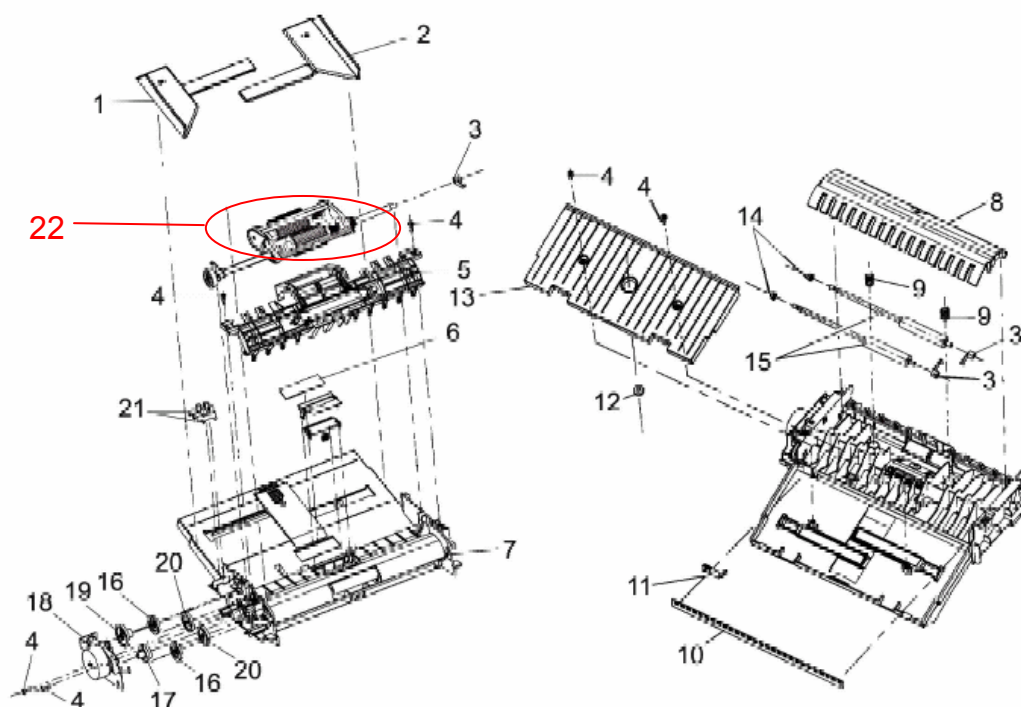
## <H320/H321> (Model PN-Fa / Model PN-Fc)

New part number	Description	Q'ty	Int	Page	Index	Note
<b>B2999572</b>	PAPER FEED ROLLER ASSY	0→1	-	12	22	

**Change:** This part was added.

**Reason:** It was missing from the Parts Catalog.

### 6.ADF Unit 2 (H230/H231)



Model: Model PN-Fa / Model PN-Fc		Date: 23-Aug-07	No.: MH320003
Modified Article: GLASS HOLDER ASSEMBLY		Prepared by: T. Shintani	
From: 1st Technical Support Sec. Service Support Dept.			
Reason for Modification:	<input checked="" type="checkbox"/> Parts catalog correction <input type="checkbox"/> To facilitate assembly <input type="checkbox"/> Part standardization	<input type="checkbox"/> Vendor change <input type="checkbox"/> To improve reliability <input type="checkbox"/> Other	<input type="checkbox"/> To meet standards ()
Modification Schedule:	From first mass production.		

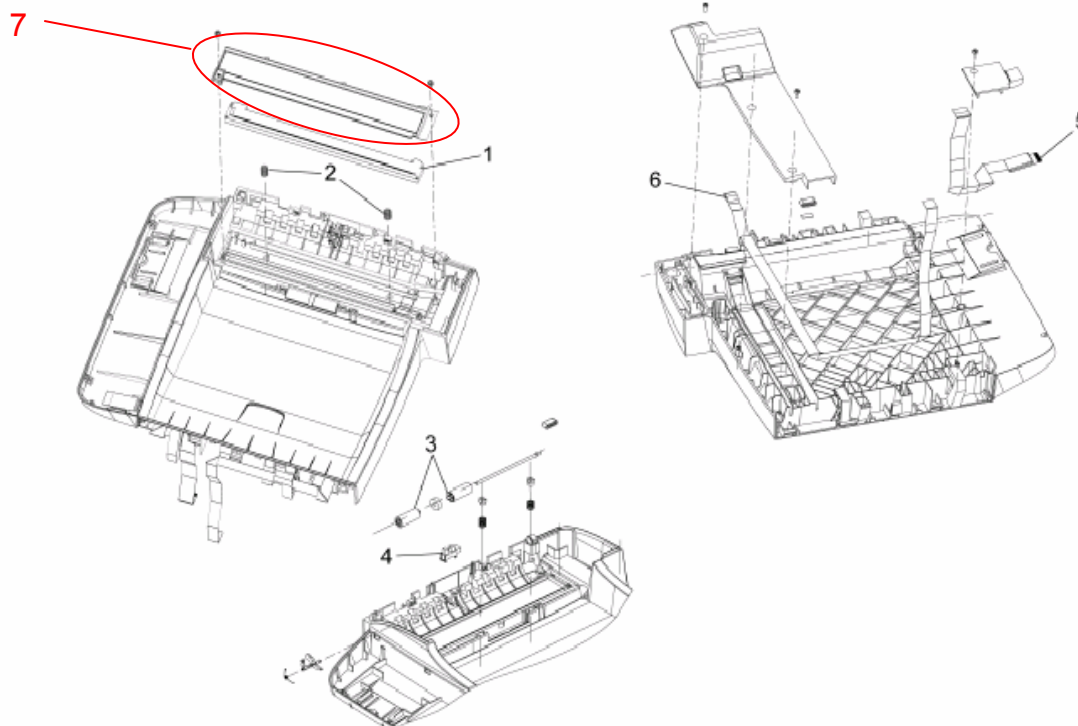
## <H320/H321> (Model PN-Fa / Model PN-Fc)

New part number	Description	Q'ty	Int	Page	Index	Note
H3209701	GLASS HOLDER ASSEMBLY	0→1	-	14	7	

**Change:** This part was added.

**Reason:** It was missing from the Parts Catalog.

### 7.Optics Section(H230/H231)



Model: Model PN-Fa / Model PN-Fc		Date: 18-Jan-08	No.: MH320004
Modified Article: ACTUATOR - PAPER PICK-UP		Prepared by: T. Shintani	
From: 1st Technical Support Sec. Service Support Dept.			
Reason for Modification:	<input checked="" type="checkbox"/> Parts catalog correction <input type="checkbox"/> To facilitate assembly <input type="checkbox"/> Part standardization	<input type="checkbox"/> Vendor change <input type="checkbox"/> To improve reliability <input type="checkbox"/> Other	<input type="checkbox"/> To meet standards ()
Modification Schedule:	From first mass production.		

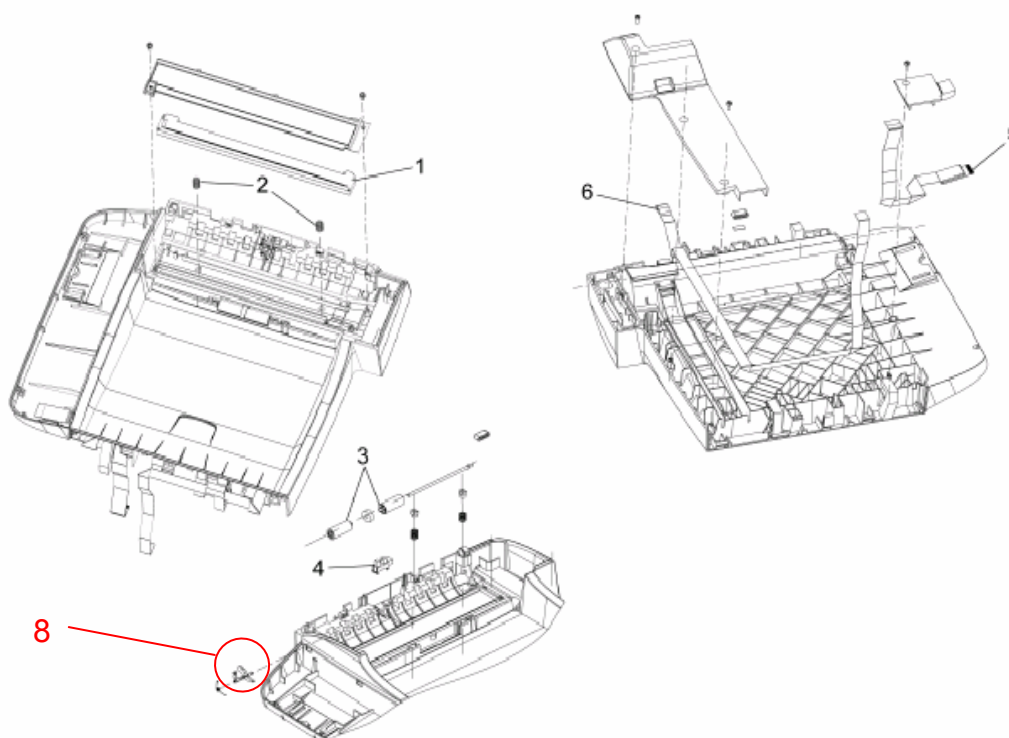
## <H320/H321> (Model PN-Fa / Model PN-Fc)

New part number	Description	Q'ty	Int	Page	Index	Note
H3209702	ACTUATOR - PAPER PICK-UP	0→1	-	14	8	

**Change:** This part was added.

**Reason:** It was missing from the Parts Catalog.

## 7.Optics Section(H230/H231)



**Reissued: 23-Jul-08**

Model: Model PN-Fa / Model PN-Fc	Date: 20-Feb-08	No.: MH320005b
----------------------------------	-----------------	----------------

**MB Correction**

The items in ***bold italics*** have been corrected or added.

Modified Article: Improved ADF No-feed Jam		Prepared by: T. Shintani	
From: 1st Technical Support Sec. Service Support Dept.			
Reason for Modification:	<input checked="" type="checkbox"/> Parts catalog correction <input type="checkbox"/> To facilitate assembly <input type="checkbox"/> Part standardization	<input type="checkbox"/> Vendor change <input type="checkbox"/> To improve reliability <input type="checkbox"/> Other	<input type="checkbox"/> To meet standards ()
Modification Schedule:	From first mass production.		

**<H320> (Model PN-Fa)**

OLD part number	New part number	Description	Q'ty	Int	Page	Index	Note
H3207502	<b>H3209706</b>	OPERATION PANEL BUTTON FAXa	1	-	5	3	*1
B2999557	<b>B2999703</b>	PAPER INPUT GUIDE	1	-	13	7	*2
H3207513	<b>H3209704</b>	UPPER COVER	1	-	11	2	*2
B2999565	B2999565	ANALYSIS ROLLER	<b>2-1</b>	-	13	15	*2
	<b>H3209700</b>	ANALYSIS ROLLER 2	<b>2-1</b>	-	13	23	*2
-	<b>B2999707</b>	PAPER DEFLECT GUIDE	1	-	13	24	*2

**< H321> (Model PN- Fc)**

OLD part number	New part number	Description	Q'ty	Int	Page	Index	Note
H3217502	<b>H3219700</b>	OPERATION PANEL BUTTON FAXc	1	-	5	3	*1
B2999557	<b>B2999703</b>	PAPER INPUT GUIDE	1	-	13	7	*2
H3207513	<b>H3209704</b>	UPPER COVER	1	-	11	2	*2
B2999565	B2999565	ANALYSIS ROLLER	<b>2-1</b>	-	13	15	*2
	<b>H3209700</b>	ANALYSIS ROLLER 2	<b>2-1</b>	-	13	23	*2
-	<b>B2999707</b>	PAPER DEFLECT GUIDE	1	-	13	24	*2

**\*1**

***This change applies only to the part number modification. This was done for part number management***

**\*2**

***Change: The shapes of these parts were changed.***

***Reason: To prevent "ADF non-feeds" and "Waved image on ADF copies".***

***See RH320005/ RH320006 for important information on installing the new parts.***



Model: Model PN-F1		Date: 3-Apr-08	No.: MH320006
Modified Article: Fusing unit parts change		Prepared by: T. Shintani	
From: 1st Technical Support Sec. Service Support Dept.			
Reason for Modification:	<input checked="" type="checkbox"/> Parts catalog correction <input type="checkbox"/> To facilitate assembly <input checked="" type="checkbox"/> Part standardization	<input type="checkbox"/> Vendor change <input type="checkbox"/> To improve reliability <input type="checkbox"/> Other	<input type="checkbox"/> To meet standards ()
Modification Schedule:	From first mass production.		

**<H320/H321 >**

Old part number	New part number	Description	Q'ty	Int	Page	Index	Note
G1274074	<b>G1274079</b>	<b>HOT ROLLER:DIA30</b>	1	X/X	21	34	
G1274314	<b>G1274312</b>	<b>GEAR:HOT ROLLER:DIA30</b>	1	X/X	21	26	

**Change:** The shapes of these parts were changed.

**Reason:** To minimize a "rumbling" sound generated by the fusing unit.

**Important:**

When you replace the old parts for the first time, make sure to install the new ones **together as a set.**

Model: Model PN-Fa / Model PN-Fc		Date: 21-Apr-08	No.: MH320007
Modified Article: Operation Panel FAXa		Prepared by: T. Shintani	
From: 1st Technical Support Sec. Service Support Dept.			
Reason for Modification:	<input checked="" type="checkbox"/> Parts catalog correction <input type="checkbox"/> To facilitate assembly <input type="checkbox"/> Part standardization	<input type="checkbox"/> Vendor change <input type="checkbox"/> To improve reliability <input type="checkbox"/> Other	<input type="checkbox"/> To meet standards ()
Modification Schedule:	From first mass production.		

**<H320> (Model PN-Fa)**

OLD part number	New part number	Description	Q'ty	Int	Page	Index	Note
H3207500	<b>H3209705</b>	Operation Panel FAXa	1	-	3	1	

**Change/Reason:** Parts standardization.

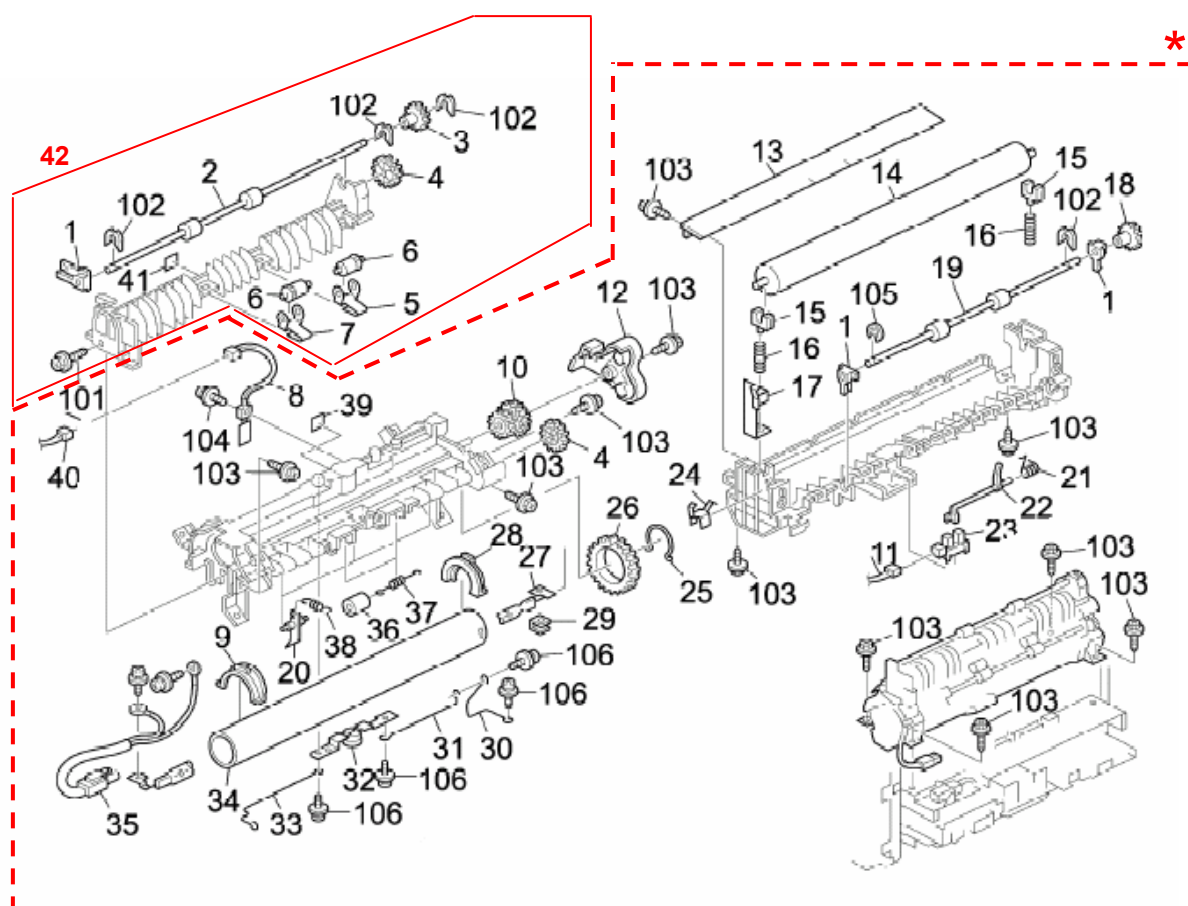


Model: Model PN-Fa / Model PN-Fc		Date: 3-Jun-08	No.: MH320008
Modified Article: PAPER EXIT UNIT		Prepared by: T. Shintani	
From: 1st Technical Support Sec. Service Support Dept.			
Reason for Modification:	<input checked="" type="checkbox"/> Parts catalog correction <input type="checkbox"/> To facilitate assembly <input type="checkbox"/> Part standardization	<input type="checkbox"/> Vendor change <input type="checkbox"/> To improve reliability <input type="checkbox"/> Other	<input type="checkbox"/> To meet standards ()
Modification Schedule:	-		

## <H320/H321> (Model PN-Fa/PN-Fc)

New part number	Description	Q'ty	Int	Page	Index	Note
G1274400	PAPER EXIT UNIT:ASS'Y	1	-	21	42	

Change/Reason: Part catalog correction.



Model: Model PN-Fa / PN-Fc		Date: 3-Jun-08	No.: MH320009
Modified Article: Operation Panel Button		Prepared by: T. Shintani	
From: 1st Technical Support Sec. Service Support Dept.			
Reason for Modification:	<input checked="" type="checkbox"/> Parts catalog correction <input type="checkbox"/> To facilitate assembly <input type="checkbox"/> Part standardization	<input type="checkbox"/> Vendor change <input type="checkbox"/> To improve reliability <input type="checkbox"/> Other	<input type="checkbox"/> To meet standards ()
Modification Schedule:	From first mass production.		

**<H320> (Model PN-Fa)**

OLD part number	New part number	Description	Q'ty	Int	Page	Index	Note
H3209706	<b>H3209707</b>	OPERATION PANEL BUTTON FAXa	1	O/O	5	3	

**<H321> (Model PN-Fc)**

OLD part number	New part number	Description	Q'ty	Int	Page	Index	Note
H3219700	<b>H3219701</b>	OPERATION PANEL BUTTON FAXc	1	O/O	5	3	

\*This change applies only to the part number modification. This was done for parts number management

Model: Model PN-Fa / PN-Fc		Date: 15-Oct-08	No.: MH320010
Modified Article: ACTUATOR - PAPER PICK-UP		Prepared by: T. Shintani	
From: 1st Technical Support Sec. Service Support Dept.			
Reason for Modification:	<input checked="" type="checkbox"/> Parts catalog correction <input type="checkbox"/> To facilitate assembly <input type="checkbox"/> Part standardization	<input type="checkbox"/> Vendor change <input type="checkbox"/> To improve reliability <input type="checkbox"/> Other	<input type="checkbox"/> To meet standards ()
Modification Schedule:	From first mass production.		

**<H320/ H321> (Model PN-Fa/c)**

OLD part number	New part number	Description	Q'ty	Int	Page	Index	Note
H3209702	<b>G0253047</b>	ACTUATOR - PAPER PICK-UP	1	O/O	15	8	

\*This change applies only to the part number modification. This was done for part number management



Part Change Information List

Date: June 30, 2009

Model	Code	PCIL Nr.	PCIL Correction	Old part number	New part number	Description	Old Q'ty	New Q'ty	Int	3DPC	Page	Index	Set	Set Int	RTB	Note	Ref. Nr.	ECN Nr.
PN-F1	H320	200906		H3207506	H3207532	MAIN BOARD FAX A EU	1	1	O/O		5	10						
PN-F1	H320	200906		G1272502	G1272503	PAPER TRAY UNIT	1	1	O/O		17	*						



Part Change Information List

Date: September 30, 2009

Model	Code	PCIL Nr.	PCIL Correction	Old part number	New part number	Description	Old Q'ty	New Q'ty	Int	3DPC	Page	Index	Set	Set Int	RTB	Note	Ref. Nr.	ECN Nr.
PN-F	H320	200909		B2999503	M0481008	SCREW:M3X6:188616956	15	15	O/O		5	5					V0901094	
PN-F	H320	200909		B2999503	M0481008	SCREW:M3X6:188616956	15	15	O/O		7	8					V0901094	



Part Change Information List

Date: October 30, 2009

Model	Code	PCIL Nr.	PCIL Correction	Old part number	New part number	Description	Old Q'ty	New Q'ty	Int	3DPC	Page	Index	Set	Set Int	RTB	Note	Ref. Nr.	ECN Nr.
PN-F	H320	200910		B2999552	M0481064	RZFUPPER PAPER GUIDE:252293717	1	1	O/O		16	5					V0901094	
PN-F	H320	200910		G1275737	G1915737	HARNESS:SENSOR:5V	1	1	O/O		21	33					V0901664	



Part Change Information List

Date: December 29, 2009

Model	Code	PCIL Nr.	PCIL Correction	Old part number	New part number	Description	Old Q'ty	New Q'ty	Int	3DPC	Page	Index	Set	Set Int	RTB	Note	Ref. Nr.	ECN Nr.
PN-F	H320	200912		H3207517	M0481065	SEPARATION PAD ASSY:252876321	1	1	O/O		13	6					V0901094	



Part Change Information List

Date: February 26, 2010

Model	Code	PCIL Nr.	PCIL Correction	Old part number	New part number	Description	Old Q'ty	New Q'ty	Int	3DPC	Page	Index	Set	Set Int	RTB	Note	Ref. Nr.	ECN Nr.
PN-F	H320	201002		H3207528	H3209709	MAIN BOARD	1	1	X/O		5	10				For ASIA	V0902394	
PN-F	H320	201002		B2999551	M0481062	BEARING:ROLLER:252470017	3	3	O/O		17	3					V0901094	





Part Change Information List

Date: March 31, 2010

Model	Code	PCIL Nr.	PCIL Correction	Old part number	New part number	Description	Old Q'ty	New Q'ty	Int	3DPC	Page	Index	Set	Set Int	RTB	Note	Ref. Nr.	ECN Nr.
PN-F	H320	201003		B2999568	M0481077	ADF MOTOR:252293759	1	1	O/O		13	18					V0901094	



Part Change Information List

Date: April 30, 2010

Model	Code	PCIL Nr.	PCIL Correction	Old part number	New part number	Description	Old Q'ty	New Q'ty	Int	3DPC	Page	Index	Set	Set Int	RTB	Note	Ref. Nr.	ECN Nr.
PN-F	H320	201004		G1825741	G1915741	HARNESS:AIO:5V	1	1	O/O		23	14					V0903272	



Part Change Information List

Date: May 31, 2010

Model	Code	PCIL Nr.	PCIL Correction	Old part number	New part number	Description	Old Q'ty	New Q'ty	Int	3DPC	Page	Index	Set	Set Int	RTB	Note	Ref. Nr.	ECN Nr.
PN-F	H320	201005		B2999572	M0481081	PAPER FEED ROOLER ASS'Y:251269709	1	1	O/O		13	22					V0901094	
PN-F	H320	201005		B2999571	M0481080	PHOTOINTERRUPTER:188240335	1	1	O/O		17	24					V0901094	



Part Change Information List

Date: Aug 31, 2010

Model	Code	PCIL Nr.	PCIL Correctio	Old part number	New part number	Description	Old Q'ty	New Q'ty	Int	3DPC	Page	Index	Set	Set Int	RTB	Note	Ref. Nr.	ECN Nr.
PN-F	H320	201008		H3207532	H3209708	MAIN BOARD FAX_A EU	1	1	X/O		5	10					V0902394	



Part Change Information List

Date: December 29, 2010

Model	Code	PCIL Nr.	PCIL Correction	Old part number	New part number	Description	Old Q'ty	New Q'ty	Int	3DPC	Page	Index	Set	Set Int	RTB	Note	Ref. Nr.	ECN Nr.
PN-F	H320	201012		H3207529	H3209710	MAIN BOARD	1	1	O/O							For China	V0902394	

**RICOH****Part Change Information List**

Date: June 30, 2011

Model	Code	PCIL Nr.	PCIL Correction	Old part number	New part number	Description	Old Q'ty	New Q'ty	Int	3DPC	Page	Index	Set	Set Int	RTB	Note	Ref. Nr.	ECN Nr.
PN-F	H320	201106		G1825510	G1915510	POWER SUPPLY UNIT:EU	1	1	O/O		25	12					V1101029	





Part Change Information List

Date: July 31, 2012

Model	Code	PCIL Nr.	PCIL Correction	Old part number	New part number	Description	Old Q'ty	New Q'ty	Int	3DPC	Page	Index	Set	Set Int	RTB	Note	Ref. Nr.	ECN Nr.
PN-F1	H321	201206		G1824211	G1824210	FUSING UNIT:ASS'Y	1	1	X/O		21	*				115V (NA)	V1201095	12032098



## Part Change Information List

Date: May 31, 2013

Model	Code	PCIL Number	PCIL Correction	Old part number	New part number	Description	Old Q'ty	New Q'ty	Int	3DPC	Page	Index	Set	Set Int	RTB	Note	Ref Number	ECN Number
PN-F	H320	201305		B2999558	M0481067	SCAN PASS GUIDE:252364970	1	1	O/O		13	8					V0901094	





## Part Change Information List

Date: August 30, 2013

Model	Code	PCIL Number	PCIL Correction	Old part number	New part number	Description	Old Q'ty	New Q'ty	Int	3DPC	Page	Index	Set	Set Int	RTB	Note	Ref Number	ECN Number
PN-F	H320	201308		M0481081	M0489501	PAPER FEED ROOLER ASS'Y:253240690	1	1	X/O		13	22					V1203834	



Part Change Information List

Date: February 27, 2015

Model	Code	PCIL Number	PCIL Correction	Old part number	New part number	Description	Old Q'ty	New Q' ty	Int	3DPC	Page	Index	Set	Set Int	RTB	Note	Ref Number	ECN Number
PN-F	H320	201502		G1274211	G1274210	FUSING UNIT:ASS'Y	1	1	X/O		21	*				For 220V	V1201095	12032098



Part Change Information List

Date: April 1, 2015

Model	Code	PCIL Number	PCIL Correction	Old part number	New part number	Description	Old Q'ty	New Q'ty	Int	3DPC	Page	Index	Set	Set Int	RTB	Note	Ref Number	ECN Number
PN-F	H320	201503		M0489501	M0489502	ADF PAPER FEED ASS'Y 253017421:252970629	1	1	O/O	N	13	22			Y		V1500678	



Part Change Information List

Date: July 2, 2015

Model	Code	PCIL Number	PCIL Correction	Old part number	New part number	Description	Old Q' ty	New Q' ty	Int	3DPC	Page	Index	Set	Set Int	RTB	Note	Ref Number	ECN Number
PN-F	H320	201506		M0481065		SEPARATION PAD ASSY:252876321		---	X/O	N	13	6			Y		V1203834	
PN-F	H320	201506		B2999570	M0481079	GEAR:42Z:252365258	2	2	O/O	N	13	20					V0901094	



Part Change Information List

Date: April 28, 2016

Model	Code	PCIL Number	PCIL Correction	Old part number	New part number	Description	Old Q'ty	New Q'ty	Int	3DPC	Page	Index	Set	Set Int	RTB	Note	Ref Number	ECN Number
PN-F	H320	201604		B2999537	M0481045	CIS SPRING:252152528	2	2	O/O	N	15	2					V0901094	