

Model: Model L1a/L1b		Date: 29-Jan-03	No.: MH911001
Modified Article: Addition of User's Guide and Quick Guide		Prepared by: A. Ishiyama	
From: Technical Services Sec. Service Planning Dept.			
Reason for Modification:	<input checked="" type="checkbox"/> Parts catalog correction <input type="checkbox"/> To facilitate assembly <input type="checkbox"/> Part standardization	<input type="checkbox"/> Vendor change <input type="checkbox"/> To improve reliability <input type="checkbox"/> Other ()	<input type="checkbox"/> To meet standards (       )
Modification Schedule:	All new parts are available from the first mass production.		

Please make the following corrections to your Parts Catalogs.

Incorrect part number	Correct part number	Description	Q'ty	Int	Page	Index	Note
	H9111000	User's Guide – NA/Asia	0→1		3	*	
	H9111001	Quick Guide - EU	0→1		3	*	

Model: Model L1a/L1b

Date: 29-Jan-03

No.: MH911001

27 January, 2003

PARTS CATALOG

Index No.	Part No.	Description	Q'ty	H911		H912	
				27	29	17	27
1	H911 9500	PSU-110V	1			O	
1	H911 9501	PSU-220V	1	O	O		O
2	H911 9502	Laser Unit	1	O	O	O	O
3	H911 9503	By-pass Tray: 1a	1	O	O		
3	H911 9504	By-pass Tray: 1b	1			O	O
4	H911 9546	Cap-Left Side	1	O	O	O	O
5	H911 9505	PCB-NCU: USA	1			O	
5	H911 9506	PCB-NCU: EU	1	O			O
5	H911 9564	PCB-NCU: Asia	1		O		
6	H911 9507	RX Drive Unit	1	O	O	O	O
7	H911 9508	Connector Board-Scanner	1	O	O	O	O
8	H911 9509	Top Cover	1	O	O	O	O
9	H911 9511	Rear Cover	1	O	O	O	O
10	H911 9512	Paper Exit Tray	1	O	O	O	O
11	H911 9513	Document Guide	1	O	O	O	O
12	H911 9514	Document Tray	1	O	O	O	O
*	H911 1000	User's Guide – NA/Asia	1		O	O	
*	H911 1001	Quick Guide - EU	1	O			O

## PARTS CATALOG INDEX

27 January, 2003

**PARTS CATALOG INDEX**

Part No.	Description	Section and Index No.
H911 1000	User's Guide – NA/Asia	1-*
H911 1001	Quick Guide - EU	1-*
H911 9500	PSU-110V	1-1
H911 9501	PSU-220V	1-1
H911 9502	Laser Unit	1-2
H911 9503	By-pass Tray: 1a	1-3
H911 9504	By-pass Tray: 1b	1-3
H911 9505	PCB-NCU: USA	1-5
H911 9506	PCB-NCU: EU	1-5
H911 9507	RX Drive Unit	1-6
H911 9508	Connector Board-Scanner	1-7
H911 9509	Top Cover	1-8
H911 9511	Rear Cover	1-9
H911 9512	Paper Exit Tray	1-10
H911 9513	Document Guide	1-11
H911 9514	Document Tray	1-12
H911 9515	Flat Cable	2-1
H911 9516	Harness-Laser Unit	2-2
H911 9517	Harness-Power Pack	2-3
H911 9518	Harness-NCU	2-4
H911 9519	PCB-Main Board: 1a	2-5
H911 9520	PCB-Main Board: 1b	2-5
H911 9521	Monitor Speaker	2-6
H911 9522	Paper Pick-up Cam	3-1
H911 9523	Solenoid-Paper Pick-up	3-2
H911 9524	Power Pack	3-3
H911 9525	Connector Board-Main	3-5
H911 9526	Transfer Roller	3-6
H911 9527	Friction Pad Ass'y	3-7
H911 9528	Paper Knockup Ass'y	3-10
H911 9529	Paper Feed Roller	4-4
H911 9530	Pressure Roller	4-7
H911 9531	Sensor Board	4-8
H911 9532	Cover Open Sensor	4-9
H911 9533	Quenching Lamp	4-10
H911 9534	Fusing Unit-110V	5-1
H911 9535	Fusing Unit-220V	5-1
H911 9536	Cooling Fan	4-11
H911 9537	Upper Metal Plate	6-1
H911 9538	Paper Pick-up Roller	6-2
H911 9539	OP-Port Unit-Upper: USA	7-1
H911 9540	OP-Port Unit-Upper: EU	7-1
H911 9541	PCB-OP-Port	7-2
H911 9542	Scanner Upper Unit	8-1
H911 9543	Scanner Unit-1b	9-1

Model: Model L1a/L1b

Date: 29-Jan-03

No.: MH911001

27 January, 2003

PARTS CATALOG

Part No.	Description	Section and Index No.
H911 9544	White Roller	9-4
H911 9545	ADF Feed Roller	9-5
H911 9546	Cap-Left Side	1-4
H911 9547	PCB-Hook	3-4
H911 9548	Side Friction Pad-Left	3-8
H911 9549	Side Friction Pad-Right	3-9
H911 9550	Paper Pick-up Gear Ass'y	3-11
H911 9551	Sensor Actuator- Paper Exit	4-1
H911 9552	AIO Guide Rail-Right	4-2
H911 9553	AIO Guide Rail-Left	4-3
H911 9554	Sensor Actuator-Paper End	4-5
H911 9555	Sensor Actuator-Paper Feed	4-6
H911 9559	ADF Rubber Plate	8-2
H911 9560	Scanner Unit-1a	9-1
H911 9561	Contact Image Sensor-1b	9-2
H911 9562	Contact Image Sensor-1a	9-2
H911 9563	TX Motor	9-3
H911 9564	PCB-NCU: Asia	1-5

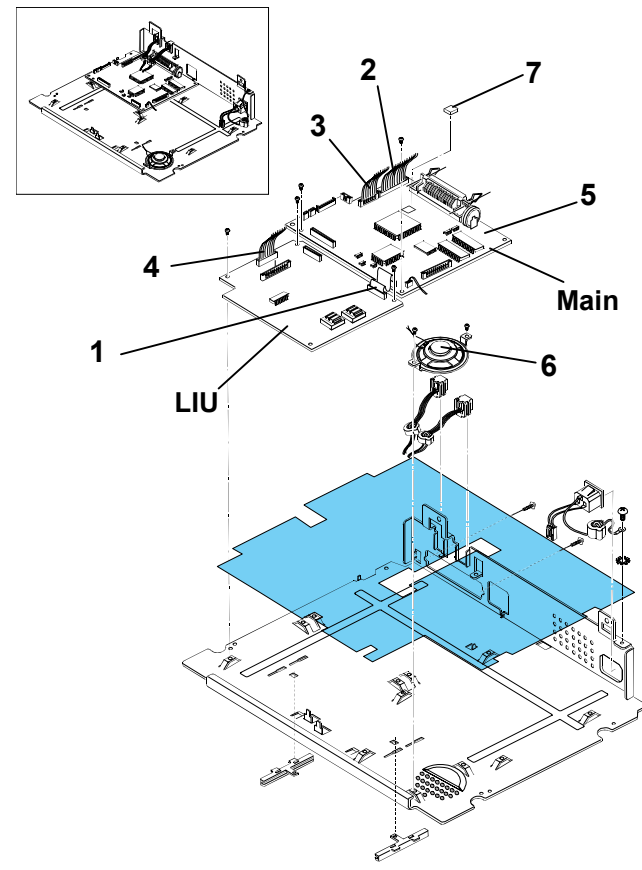
Model: Model L1a/L1b		Date: 13-Mar-03	No.: MH911002
Modified Article: EMI Regulation		Prepared by: A. Ishiyama	
From: Technical Services Sec. Service Planning Dept.			
Reason for Modification:	<input type="checkbox"/> Parts catalog correction <input type="checkbox"/> To facilitate assembly <input type="checkbox"/> Part standardization	<input type="checkbox"/> Vendor change <input type="checkbox"/> To improve reliability <input type="checkbox"/> Other ()	<input checked="" type="checkbox"/> To meet standards (EMI)
Modification Schedule:	After old parts have become out of stock.		

To provide additional latitude for satisfying EMI regulations, a ferrite core has been added to the Power Pack Harness, Monitor Speaker and Quenching Lamp, and a Rubber Foot has been added to the main board oscillator.

Old part number	New part number	Description	Q'ty	Int	Section	Index	Note
H9119517	H9119517A	Harness – Power Pack	1→1	O/O	2	3	
H9119521	H9119571	Monitor Speaker	1→1	O/O	2	6	
H9119533	H9119572	Quenching Lamp	1→1	O/O	4	10	
	H9119573	Rubber Foot	0→1	-/-	2	7	1

Note 1: see below.

## 2. SHIELD ENGINE UNIT ASSEMBLY



Model: Model L1a/L1b		Date: 9-Mar-03	No.: MH911003
Modified Article: Parts Catalog Correction		Prepared by: A. Ishiyama	
From: 1st Technical Support Sec. Service Support Dept.			
Reason for Modification:	<input checked="" type="checkbox"/> Parts catalog correction <input type="checkbox"/> To facilitate assembly <input type="checkbox"/> Part standardization	<input type="checkbox"/> Vendor change <input type="checkbox"/> To improve reliability <input type="checkbox"/> Other ()	<input type="checkbox"/> To meet standards ()
Modification Schedule:	All new parts are available from the first mass production.		

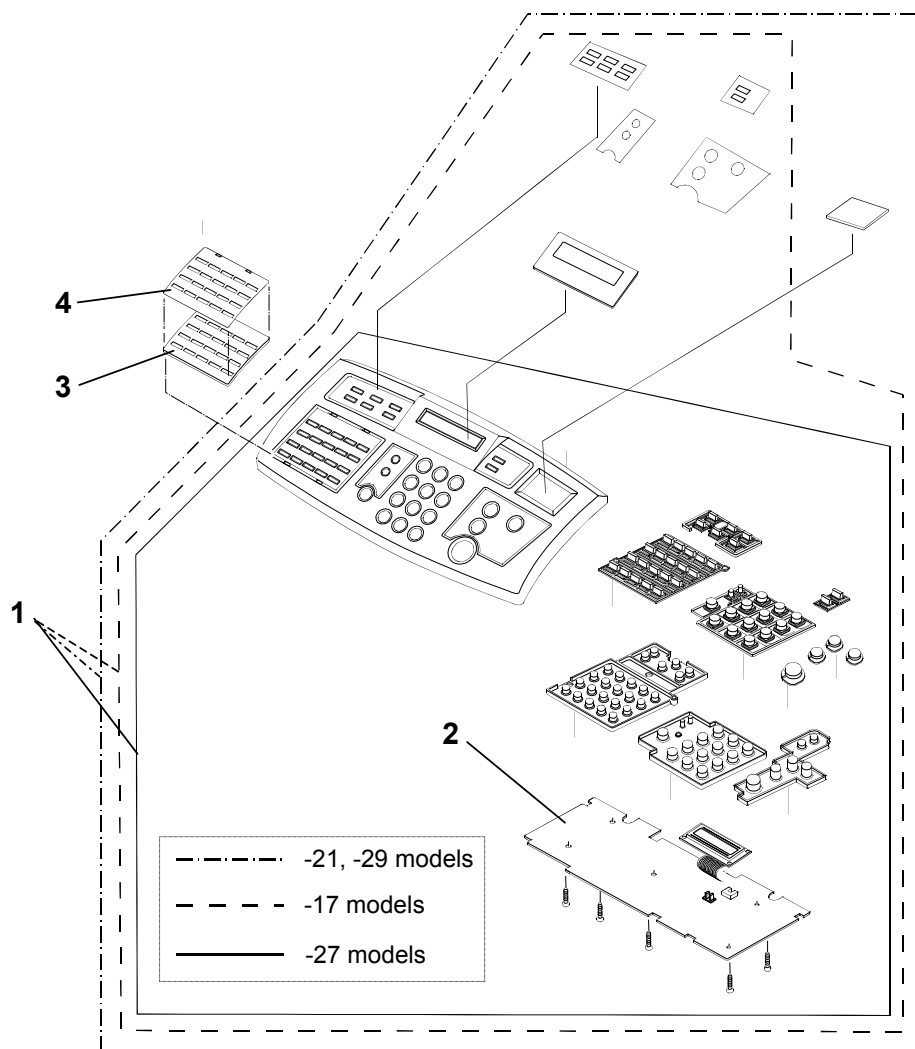
Please apply the following corrections to your Parts Catalogs.

Incorrect part number	Correct part number	Description	Q'ty	Int	Section	Index	Note
H9119540	H9119574	Op-Port Unit – Upper: Asia	1→1		7	1	1
	H9119575	Quick Dial Sheet	0→1		7	3	2
	H9119576	Quick Dial Sheet Cover	0→1		7	4	3

<Note>

Note	H911			H912	
	21	27	29	17	27
1			O		
2	O	O	O	O	O
3	O	O	O	O	O

## 7. OPE Unit



H911C905.WMF

Index No.	Part No.	Description	Q'ty	H911			H912	
				21	27	29	17	27
1	H911 9539	OP-Port Unit-Upper: USA	1				O	
1	H911 9540	OP-Port Unit-Upper: EU	1		O			O
1	H911 9574	OP-Port Unit-Upper: Asia	1			O		
1	H911 9569	OP-Port Unit-Upper: China	1	O				
2	H911 9541	PCB-OP-Port	1	O	O	O	O	O
3	H911 9575	Quick Dial Sheet	1	O	O	O	O	O
4	H911 9576	Quick Dial Sheet Cover	1	O	O	O	O	O

Model: Model L1a		Date: 22-May-03	No.: MH911004
Modified Article: Parts Catalog Correction		Prepared by: A. Ishiyama	
From: 1st Technical Support Sec. Service Support Dept.			
Reason for Modification:	<input checked="" type="checkbox"/> Parts catalog correction <input type="checkbox"/> To facilitate assembly <input type="checkbox"/> Part standardization	<input type="checkbox"/> Vendor change <input type="checkbox"/> To improve reliability <input type="checkbox"/> Other ()	<input type="checkbox"/> To meet standards ()
Modification Schedule:	All new parts are available from the first mass production.		

Please apply the following corrections to your Parts Catalogs.

Incorrect part number	Correct part number	Description	Q'ty	Int	Section	Index	Note
H9119508		Connector Board – Scanner : L1b	1→0		1	7	1
	H9119577	Connector Board – Scanner : L1a	0→1		1	7	2

The part no. H9119508 is used only for L1b, and new part no. H9119577 has been registered as for L1a.

<Note>

Note	H911			H912	
	21	27	29	17	27
1				O	O
2	O	O	O		



Model: Model L1a		Date: 22-May-03	No.: MH911004
Modified Article: Parts Catalog Correction		Prepared by: A. Ishiyama	
From: 1st Technical Support Sec. Service Support Dept.			
Reason for Modification:	<input checked="" type="checkbox"/> Parts catalog correction <input type="checkbox"/> To facilitate assembly <input type="checkbox"/> Part standardization	<input type="checkbox"/> Vendor change <input type="checkbox"/> To improve reliability <input type="checkbox"/> Other ()	<input type="checkbox"/> To meet standards ()
Modification Schedule:	All new parts are available from the first mass production.		

Please apply the following corrections to your Parts Catalogs.

Incorrect part number	Correct part number	Description	Q'ty	Int	Section	Index	Note
H9119508		Connector Board – Scanner : L1b	1→0		1	7	1
	H9119577	Connector Board – Scanner : L1a	0→1		1	7	2

The part no. H9119508 is used only for L1b, and new part no. H9119577 has been registered as for L1a.

<Note>

Note	H911			H912	
	21	27	29	17	27
1				O	O
2	O	O	O		

Model: Model L1a/L1b		Date: 29May-03	No.: MH911005
Modified Article: Parts Catalog Correction		Prepared by: A. Ishiyama	
From: 1st Technical Support Sec. Service Support Dept.			
Reason for Modification:	<input checked="" type="checkbox"/> Parts catalog correction <input type="checkbox"/> To facilitate assembly <input type="checkbox"/> Part standardization	<input type="checkbox"/> Vendor change <input type="checkbox"/> To improve reliability <input type="checkbox"/> Other ()	<input type="checkbox"/> To meet standards ()
Modification Schedule:	All new parts are available from the first mass production.		

Please apply the following corrections to your Parts Catalogs.

**Addition, P/N correction:**

Incorrect part number	Correct part number	Description	Q'ty	Int	Section	Index	Note
	H9119578	Carton Box – L1a China	0→1		1	*	1
H9119519	H9119579	PCB - Main Board: 1a China	0→1		2	5	2
	H9119580	Open Button - Scanner	0→1		9	6	3

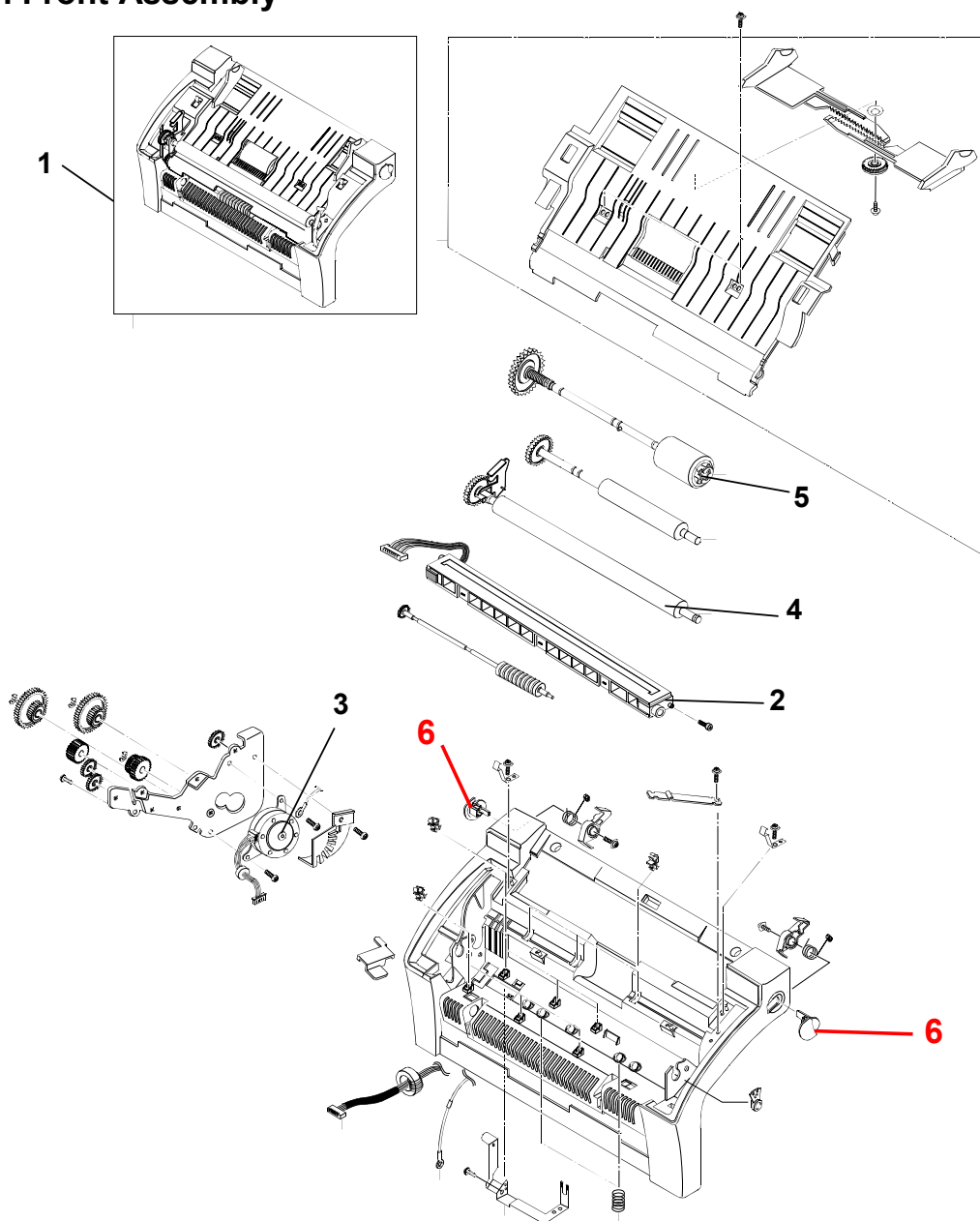
<Note>

Note	H911			H912	
	21	27	29	17	27
1	O				
2	O				
3	O	O	O	O	O

The above items 1 and 2 apply only to the China model.

<H9119580: Open Button - Scanner >

## 9. Front Assembly



H911C907.WMF

Model: Model L1a/L1b		Date: 27-Jan-04	No.: MH911006
Modified Article: Parts Catalog Correction		Prepared by: A. Ishiyama	
From: 1st Technical Support Sec. Service Support Dept.			
Reason for Modification:	<input checked="" type="checkbox"/> Parts catalog correction <input type="checkbox"/> To facilitate assembly <input type="checkbox"/> Part standardization	<input type="checkbox"/> Vendor change <input type="checkbox"/> To improve reliability <input type="checkbox"/> Other ()	<input type="checkbox"/> To meet standards ()
Modification Schedule:	All new parts are available from the first mass production.		

Due to a request from the field, the following parts have been newly added to the Parts Catalog.

## New Additions:

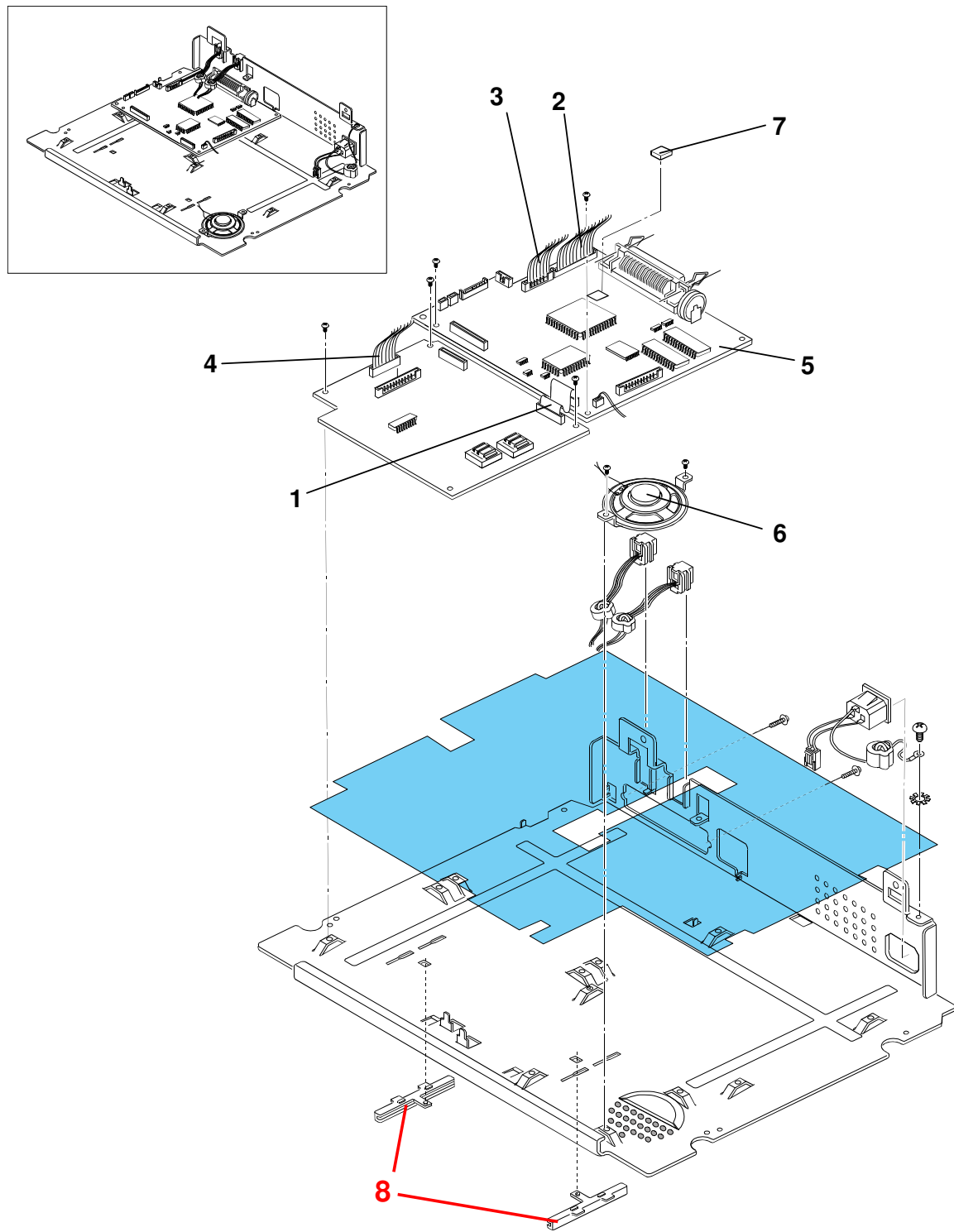
Old part number	New part number	Description	Q'ty	Int	Section	Index	Note
	H9119581	Tray Guide Rail	0→2		2	8	1
	H9119582	Pressure Roller Bushing	0→2		4	12	1
	H9119583	Pressure Roller Spring	0→2		4	13	1
	H9119584	Pressure Roller Holder	0→2		4	14	1

**Note:** The above additions apply to all of the following models.

Note	H911			H912	
	21	27	29	17	27
1	√	√	√	√	√

<8. H9119581: Tray Guide Rail>

## 2. SHIELD ENGINE UNIT ASSEMBLY

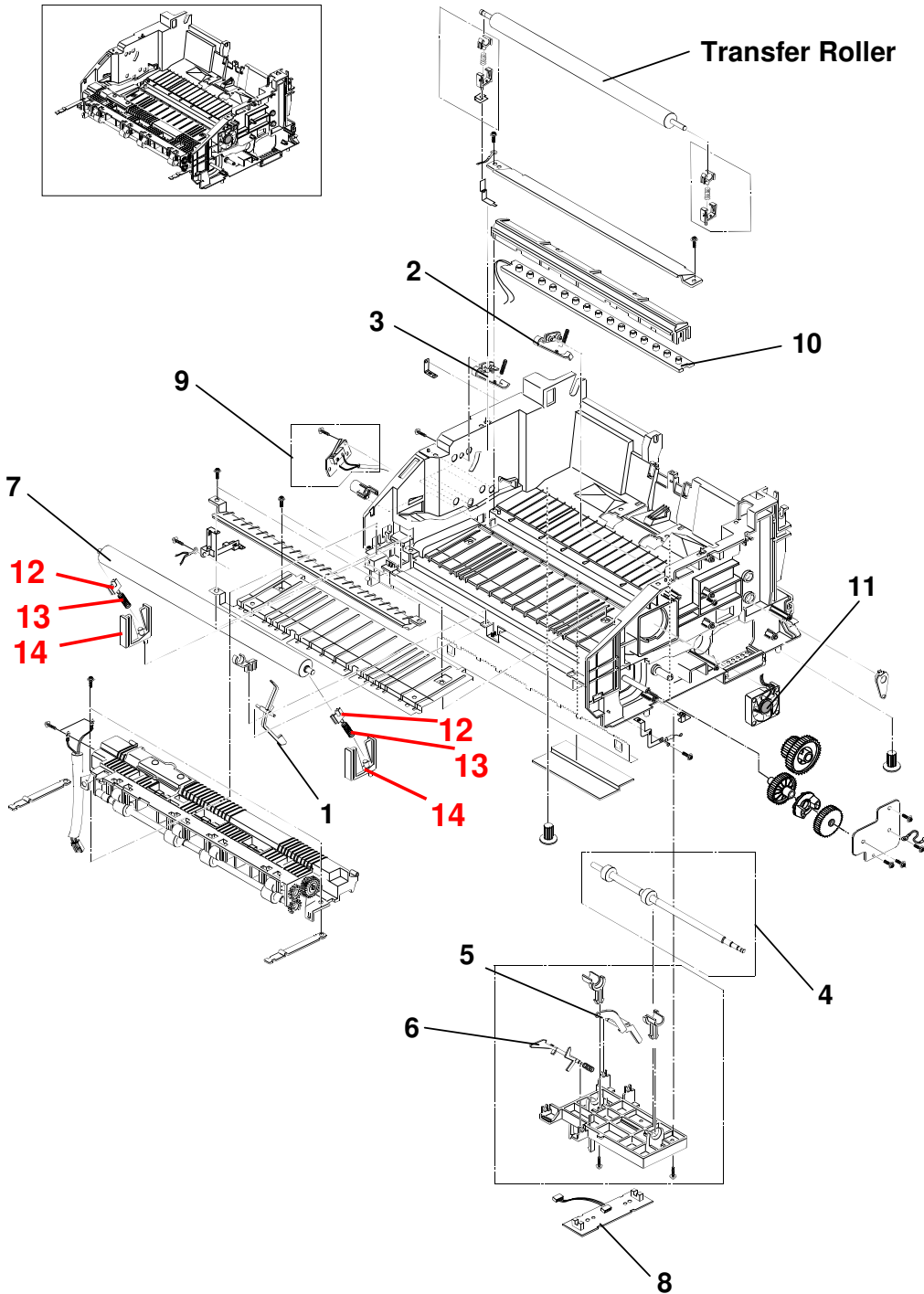


<12. H9119582: Pressure Roller Bushing>

<13. H9119583: Pressure Roller Spring>

<14. H9119584: Pressure Roller Holder>

## 4. FRAME LOWER ASSEMBLY



Model: Model L1a/L1b		Date: 16-Feb-04	No.: MH911007
Modified Article: Parts Catalog Correction		Prepared by: T.Shintani	
From: 1st Technical Support Sec. Service Support Dept.			
Reason for Modification:	<input checked="" type="checkbox"/> Parts catalog correction <input type="checkbox"/> To facilitate assembly <input type="checkbox"/> Part standardization	<input type="checkbox"/> Vendor change <input type="checkbox"/> To improve reliability <input type="checkbox"/> Other ()	<input type="checkbox"/> To meet standards ()
Modification Schedule:			

Please delete the following item from your Parts Catalogs, as it was mistakenly registered with service parts (corresponding illustration correction on the next page).

Part Number	Description	Q'ty	Int	Section	Index	Note
H9119518	Harness-NCU	1→0		4	4	

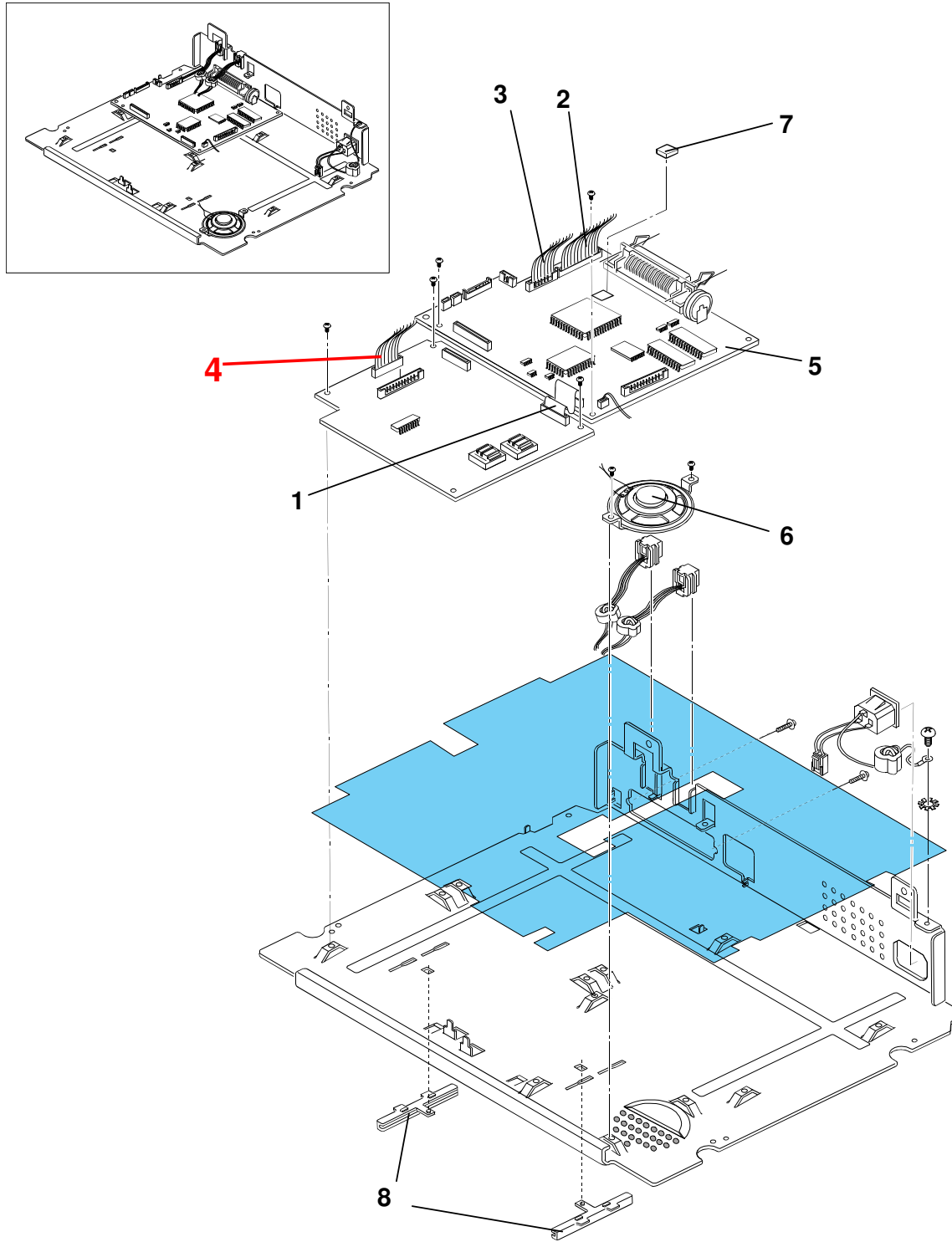


**Note:** The above deletion applies to the following models.

H911			H912	
21	27	29	17	27
√	√	√	√	√

<4. H9119518: Harness-NCU >

## 2. SHIELD ENGINE UNIT ASSEMBLY





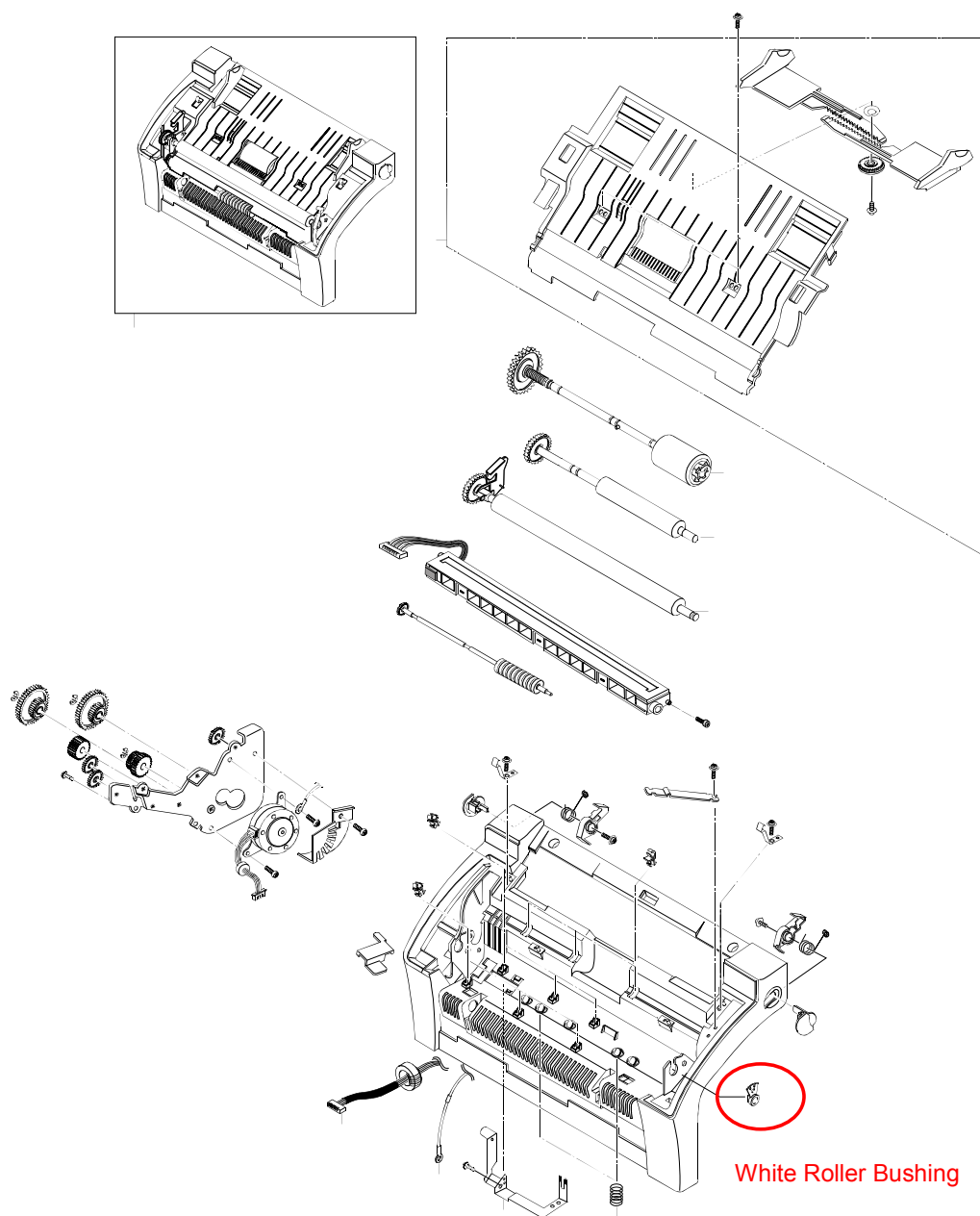
Model: Model L1a/L1b		Date: 28-Apr-04	No.: MH911008
Modified Article: Parts Catalog Correction		Prepared by: T. Shintani	
From: 1st Technical Support Sec. Service Support Dept.			
Reason for Modification:	<input type="checkbox"/> Parts catalog correction <input type="checkbox"/> To facilitate assembly <input type="checkbox"/> Part standardization	<input type="checkbox"/> Vendor change <input type="checkbox"/> To improve reliability <input checked="" type="checkbox"/> Other ()	<input type="checkbox"/> To meet standards ()
Modification Schedule:			

The following part has been added per a request from the field (see the next page for the corresponding illustration).

Old part number	New part number	Description	Q'ty	Int	Page	Index	Note
	H9119587	White Roller Bushing	0→1	-	13	7	

**Note:** The above applies to the following models.

H911			H912	
21	27	29	17	27
√	√	√	√	√



Reissued: 23-Aug-04

Model: Model L1a/L1b	Date: 28-Apr-04	No.: MH911009a
----------------------	-----------------	----------------

## MB Correction

The items in bold italics have been corrected or added.

Modified Article: Parts Catalog Correction		Prepared by: T. Shintani	
From: 1st Technical Support Sec. Service Support Dept.			
Reason for Modification:	<input type="checkbox"/> Parts catalog correction <input type="checkbox"/> To facilitate assembly <input type="checkbox"/> Part standardization	<input type="checkbox"/> Vendor change <input type="checkbox"/> To improve reliability <input checked="" type="checkbox"/> Other ()	<input type="checkbox"/> To meet standards ()
Modification Schedule:			

These parts were added as per request from the field (See the illustration on the next page).

Old part number	New part number	Description	Q'ty	Int	Page	Index	Note
	H9119585	Harness – LINE / EXE	0→1	-	4	9	*1
H9119519	H9119586	PCB – Main Board : 1A	1→1	O/O	4	5	*2
	H9119588	Lock – Scanner L	0→1	-	13	8	
	H9119589	Lock – Scanner R	0→1	-	13	9	

### Note:

\*1: Please see MH911007

**\*2: This new part number is for main boards supplied to Ricoh for use in Ricoh models.**

The above applies to these models:

	H911			H912	
	21	27	29	17	27
H9119585	✓	✓	✓	✓	✓
H9119586		✓	✓		
H9119588	✓	✓	✓	✓	✓
H9119589	✓	✓	✓	✓	✓

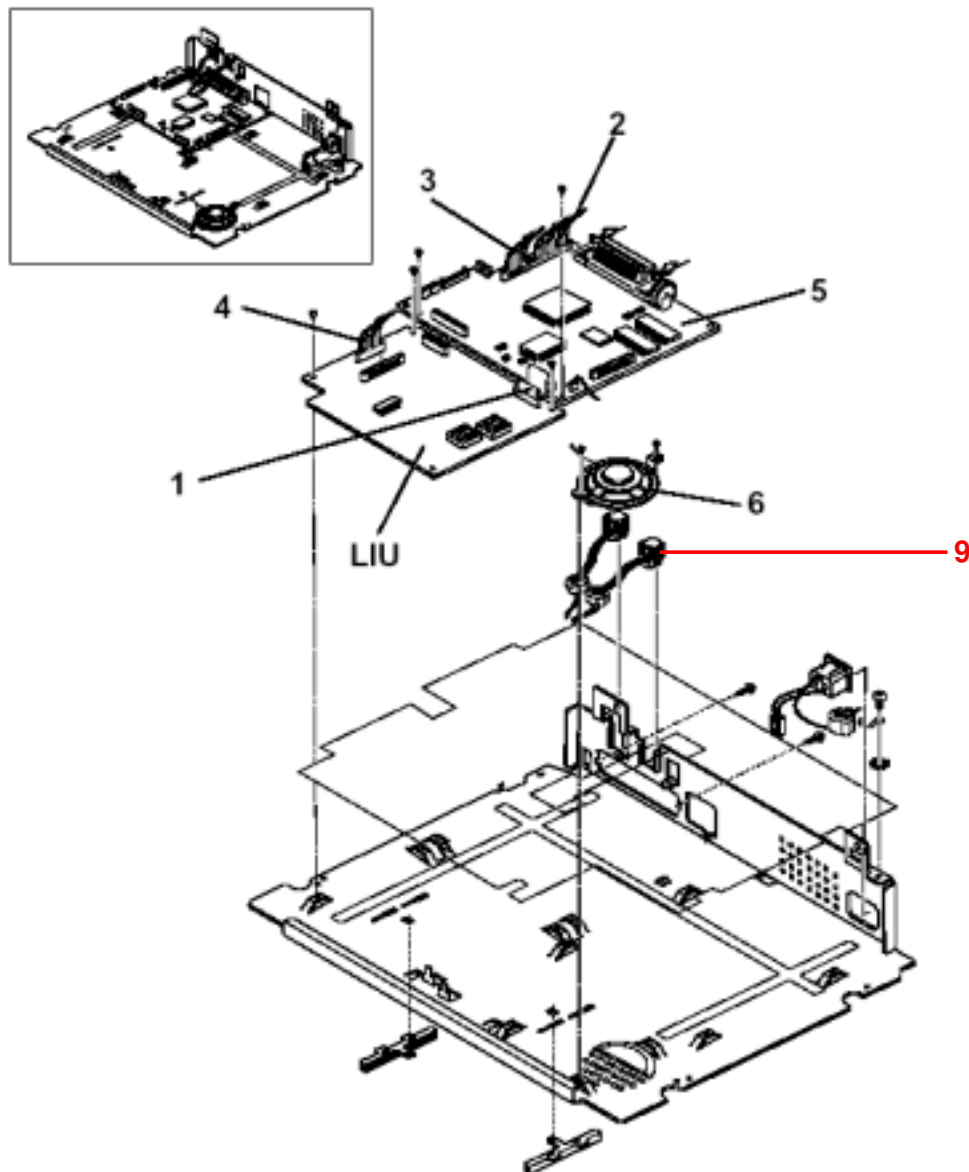
**Reissued: 23-Aug-04**

Model: Model L1a/L1b

Date: 28-Apr-04

No.: MH911009a

## 2. SHIELD ENGINE UNIT ASSEMBLY



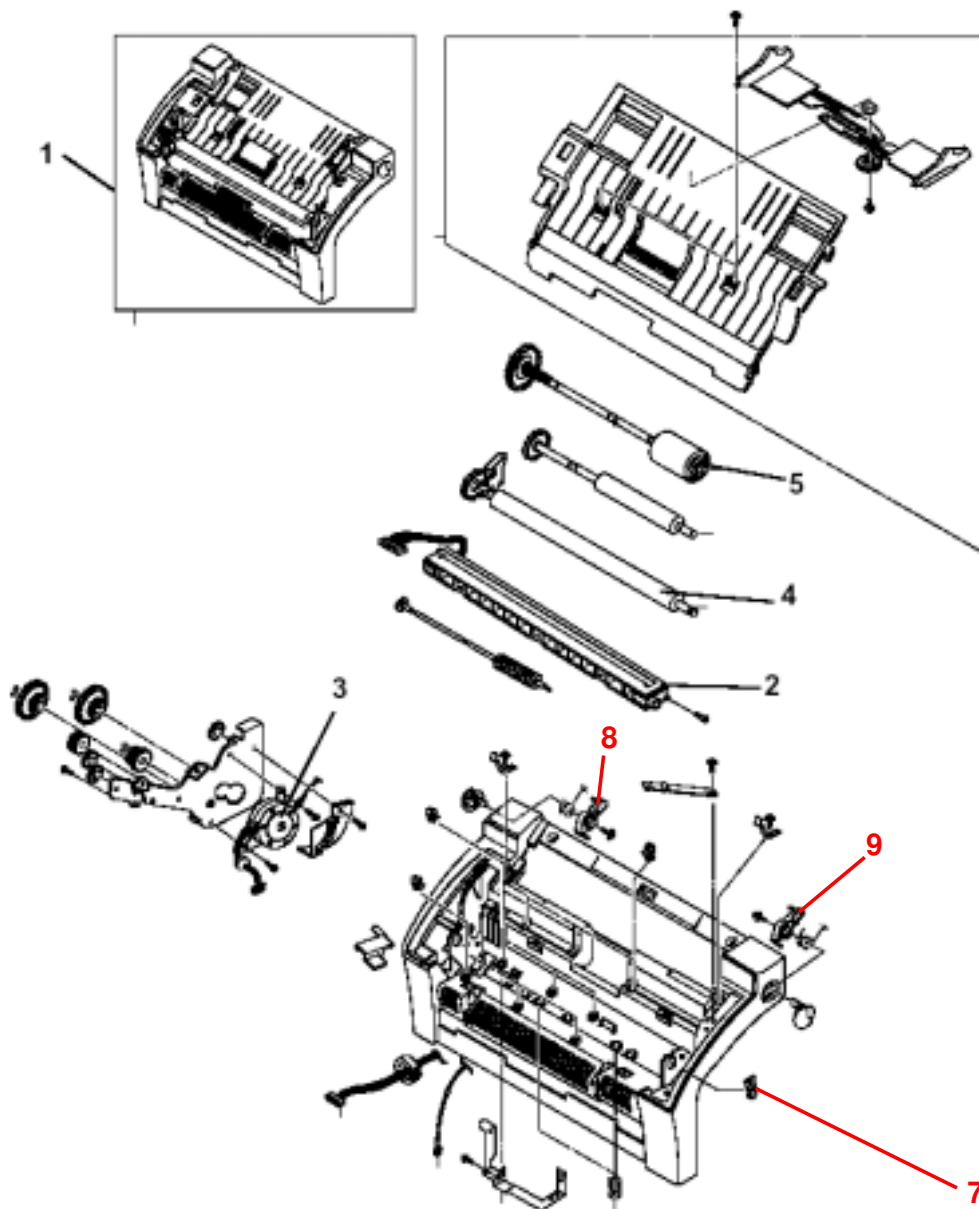
**Reissued: 23-Aug-04**

Model: Model L1a/L1b

Date: 28-Apr-04

No.: MH911009a

## 9. FRONT ASSEMBLY



Model: Model L1a/L1b		Date: 20-Oct-04	No.: MH911010
Modified Article: Parts Catalog Correction		Prepared by: T. Shintani	
From: 1st Technical Support Sec. Service Support Dept.			
Reason for Modification:	<input checked="" type="checkbox"/> Parts catalog correction <input type="checkbox"/> To facilitate assembly <input type="checkbox"/> Part standardization	<input type="checkbox"/> Vendor change <input type="checkbox"/> To improve reliability <input type="checkbox"/> Other ()	<input type="checkbox"/> To meet standards ()
Modification Schedule:			

New part number	Description	Q'ty	Int	Page	Index	Note
H9119590	Transfer Roller Bushing L	0→1	-	7	15	-
H9119591	Transfer Roller Bushing R	0→1	-	7	16	-

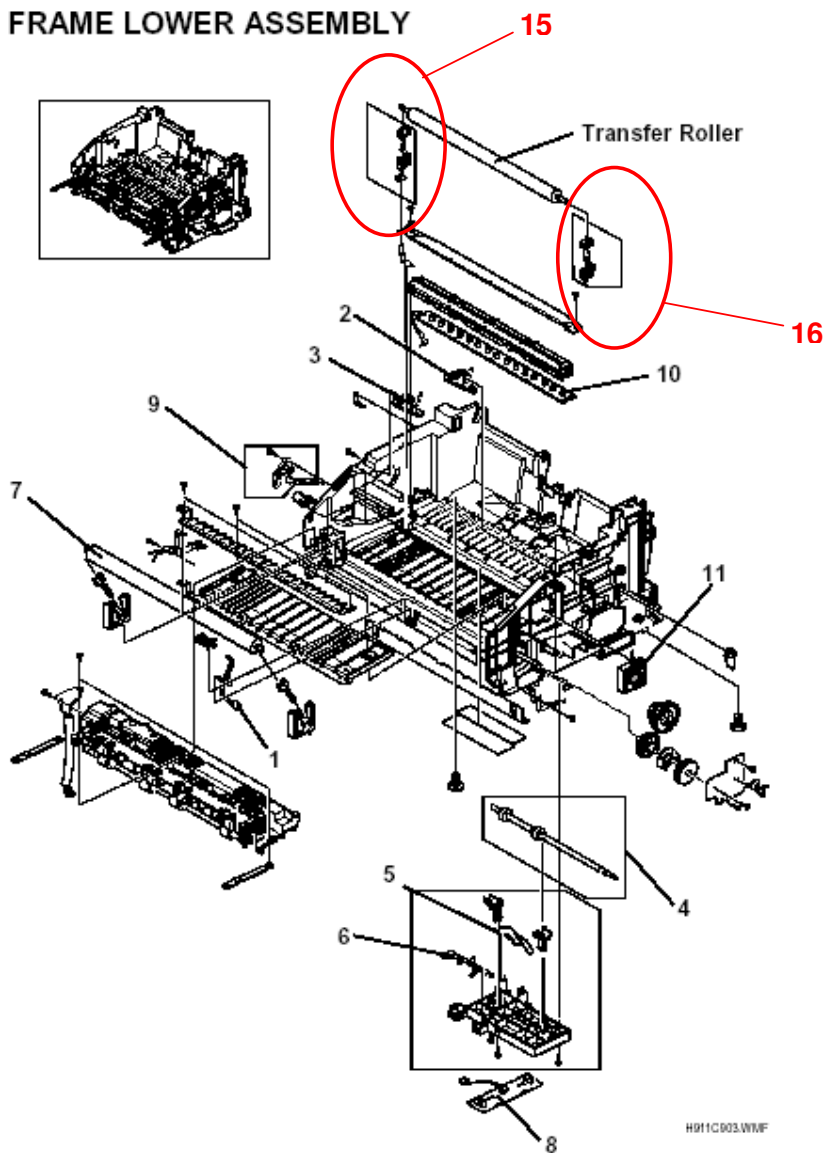
**Change:** Parts added

**Reason:** Request from the field.

**Applicable models:**

	H911			H912	
	21	27	29	17	27
H9119590	√	√	√	√	√
H9119591	√	√	√	√	√

## 4. FRAME LOWER ASSEMBLY



Model: Model L1a/L1b		Date: 20-Oct-04	No.: MH911011
Modified Article: Parts Catalog Correction		Prepared by: T. Shintani	
From: 1st Technical Support Sec. Service Support Dept.			
Reason for Modification:	<input checked="" type="checkbox"/> Parts catalog correction <input type="checkbox"/> To facilitate assembly <input type="checkbox"/> Part standardization	<input type="checkbox"/> Vendor change <input type="checkbox"/> To improve reliability <input type="checkbox"/> Other ()	<input type="checkbox"/> To meet standards ()
Modification Schedule:			

Old part number	New part number	Description	Q'ty	Int	Page	Index	Note
H9119566	H9149518	CRADLE HANDSET	1→1	-	3	14	*1

**Change:** P/N change only.

**Reason:** The same part is used on Model L1 and Model L2 (no need for two P/N).

**Applicable models:**

	H911			H912	
	21	27	29	17	27
H9149518	√				



Model: Model L1a/L1b		Date: 16-Nov-04	No.: MH911012
Modified Article: Parts Catalog Correction		Prepared by: T. Shintani	
From: 1st Technical Support Sec. Service Support Dept.			
Reason for Modification:	<input checked="" type="checkbox"/> Parts catalog correction <input type="checkbox"/> To facilitate assembly <input type="checkbox"/> Part standardization	<input type="checkbox"/> Vendor change <input type="checkbox"/> To improve reliability <input type="checkbox"/> Other ()	<input type="checkbox"/> To meet standards ()
Modification Schedule:			

Old part number	New part number	Description	Q'ty	Int	Page	Index	Note
H9119579	<b>H9119592</b>	PCB - MAIN BOARD: 1A CHINA	1→1	-	4	5	

**Change:** P/N change only.

**Reason:** P/N management at the vendor.

**Applicable models:**

	H911			H912	
	21	27	29	17	27
H9119592	√				

Model: Model L1a/L1b		Date: 26-Nov-04	No.: MH911013
Modified Article: Paper Feed Base Added		Prepared by: T. Shintani	
From: 1st Technical Support Sec. Service Support Dept.			
Reason for Modification:	<input type="checkbox"/> Parts catalog correction <input type="checkbox"/> To facilitate assembly <input type="checkbox"/> Part standardization	<input type="checkbox"/> Vendor change <input type="checkbox"/> To improve reliability <input checked="" type="checkbox"/> Other ()	<input type="checkbox"/> To meet standards ()
Modification Schedule:			

New part number	Description	Q'ty	Int	Page	Index	Note
H9119593	BASE – PAPER FEED	0→1	-	7	17	-

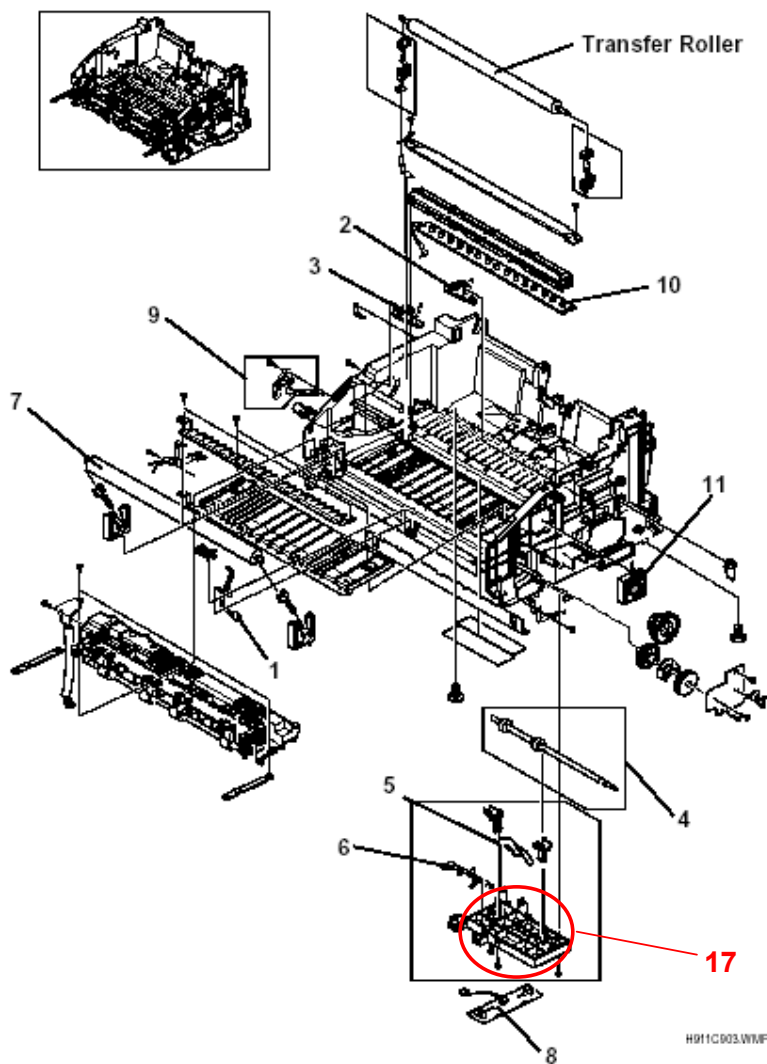
**Change:** Part added

**Reason:** Request from the field.

**Applicable models:**

	H911			H912	
	21	27	29	17	27
H9119593	√	√	√	√	√

## 4. FRAME LOWER ASSEMBLY



Model: Model L1a/L1b		Date: 3-Feb-05	No.: MH911014
Modified Article: Paper pick-up Holder Added		Prepared by: T. Shintani	
From: 1st Technical Support Sec. Service Support Dept.			
Reason for Modification:	<input type="checkbox"/> Parts catalog correction <input type="checkbox"/> To facilitate assembly <input type="checkbox"/> Part standardization	<input type="checkbox"/> Vendor change <input type="checkbox"/> To improve reliability <input checked="" type="checkbox"/> Other ()	<input type="checkbox"/> To meet standards ()
Modification Schedule:	This new part is available from the first mass production.		

New part number	Description	Q'ty	Int	Page	Index	Note
H9119594	PAPER PICK-UP HOLDER	0→2	-	9	3	-

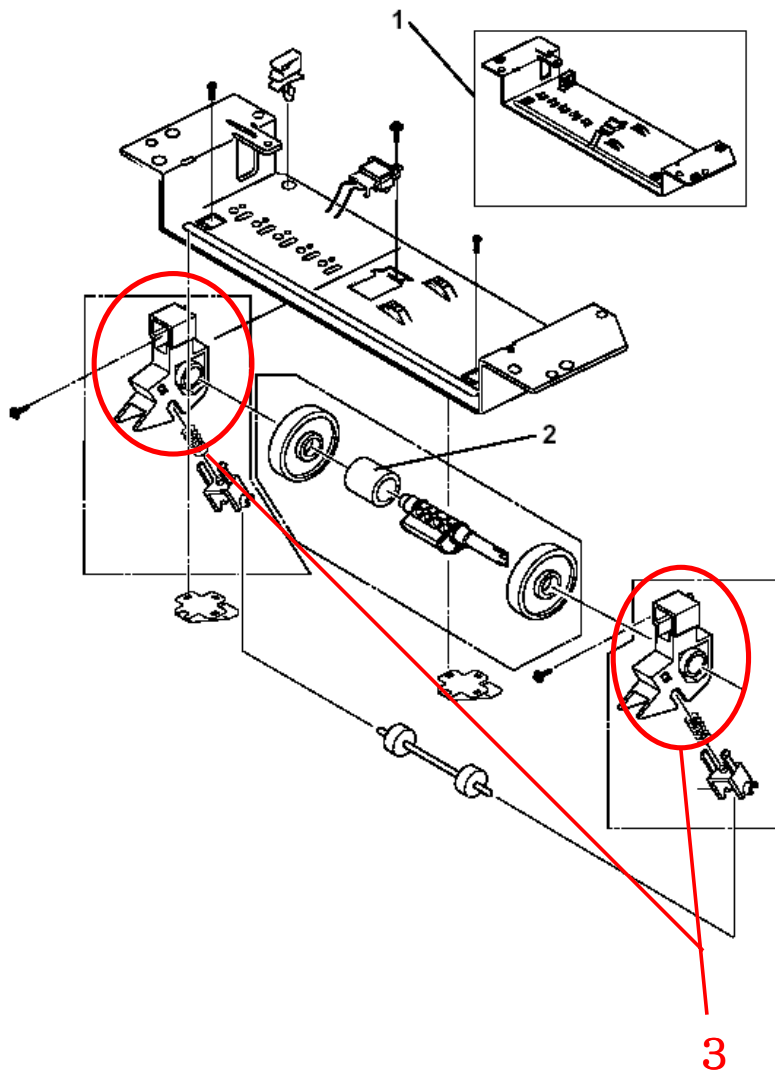
**Change:** Part added

**Reason:** Request from the field.

**Applicable models:**

	H911			H912	
	21	27	29	17	27
H9119594	√	√	√	√	√

## 6. PLATE-UPPER UNIT ASSEMBLY



Model: Model L1a/L1b		Date: 9-Feb-05	No.: MH911015
Modified Article: Paper feed Gear Added		Prepared by: T. Shintani	
From: 1st Technical Support Sec. Service Support Dept.			
Reason for Modification:	<input type="checkbox"/> Parts catalog correction <input type="checkbox"/> To facilitate assembly <input type="checkbox"/> Part standardization	<input type="checkbox"/> Vendor change <input type="checkbox"/> To improve reliability <input checked="" type="checkbox"/> Other ()	<input type="checkbox"/> To meet standards ()
Modification Schedule:	This new part is available from the first mass production.		

New part number	Description	Q'ty	Int	Page	Index	Note
H9119595	PAPER FEED GEAR	0→1	-	5	12	-

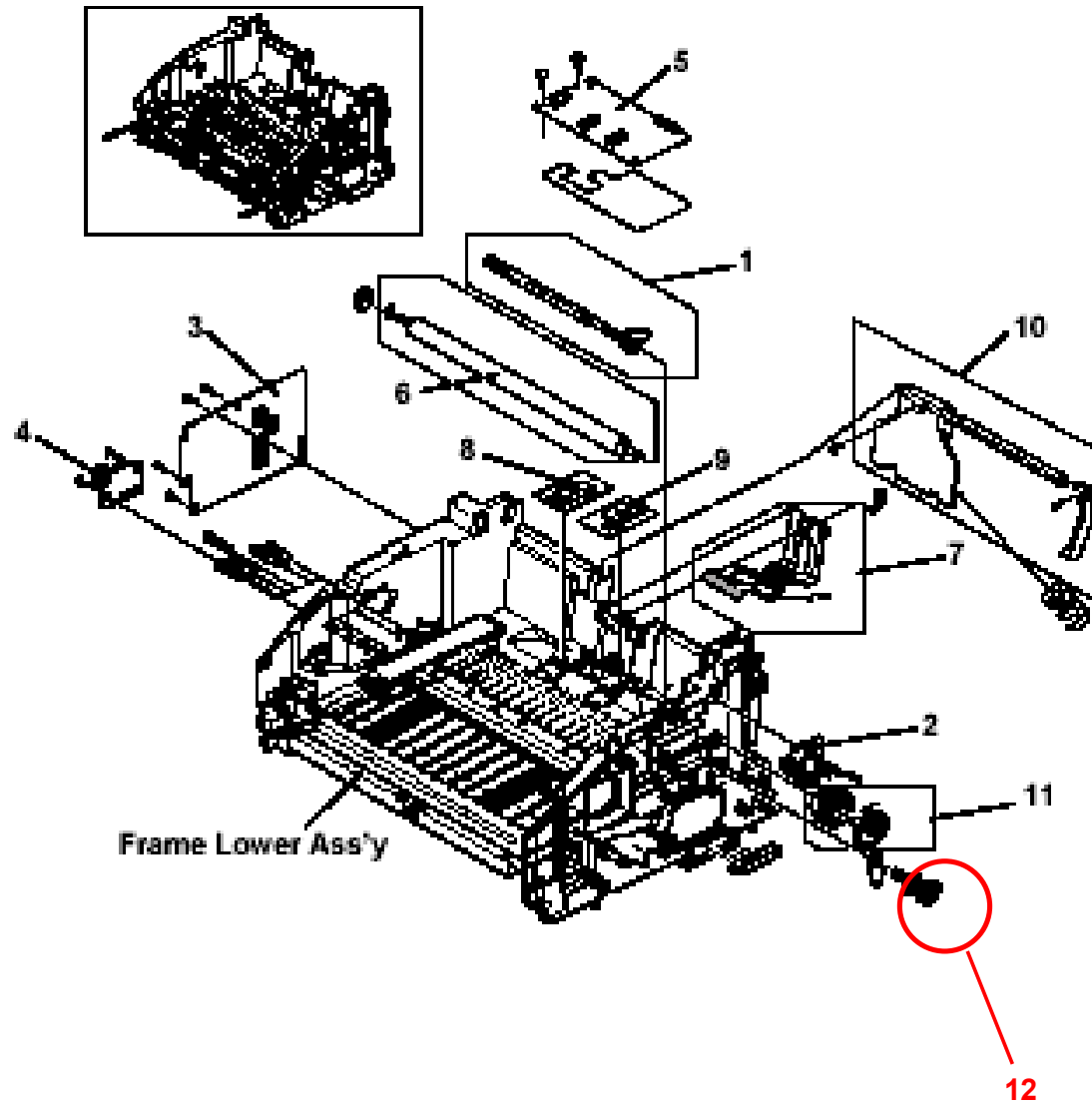
**Change:** Part added

**Reason:** Request from the field.

**Applicable models:**

	H911			H912	
	21	27	29	17	27
H9119595	√	√	√	√	√

## 3. ENGINE ASSEMBLY



Model: Model L1a/L1b		Date: 29-Sep-05	No.: MH911016
Modified Article: Pick up shaft / idel		Prepared by: T. Shintani	
From: 1st Technical Support Sec. Service Support Dept.			
Reason for Modification:	<input type="checkbox"/> Parts catalog correction <input type="checkbox"/> To facilitate assembly <input type="checkbox"/> Part standardization	<input type="checkbox"/> Vendor change <input type="checkbox"/> To improve reliability <input checked="" type="checkbox"/> Other ()	<input type="checkbox"/> To meet standards ()
Modification Schedule:			

New part number	Description	Q'ty	Int	Page	Index	Note
H9119596	PICK UP SHAFT	0→1	-	9	4	-
H9119597	PICK UP IDEL	0→1	-	9	5	-

**Change:** The parts were added.

**Reason:** Request from the field.

### Applicable models:

	H911			H912	
	21	27	29	17	27
H9119596	√	√	√	√	√
H9119597	√	√	√	√	√

Incorrect part number	Correct part number	Description	Q'ty	Int	Page	Index	Note
H9119587	H9119598	WHITE ROLLER BUSHING	1→1	-	12	7	-

**Change:** The part number was corrected.

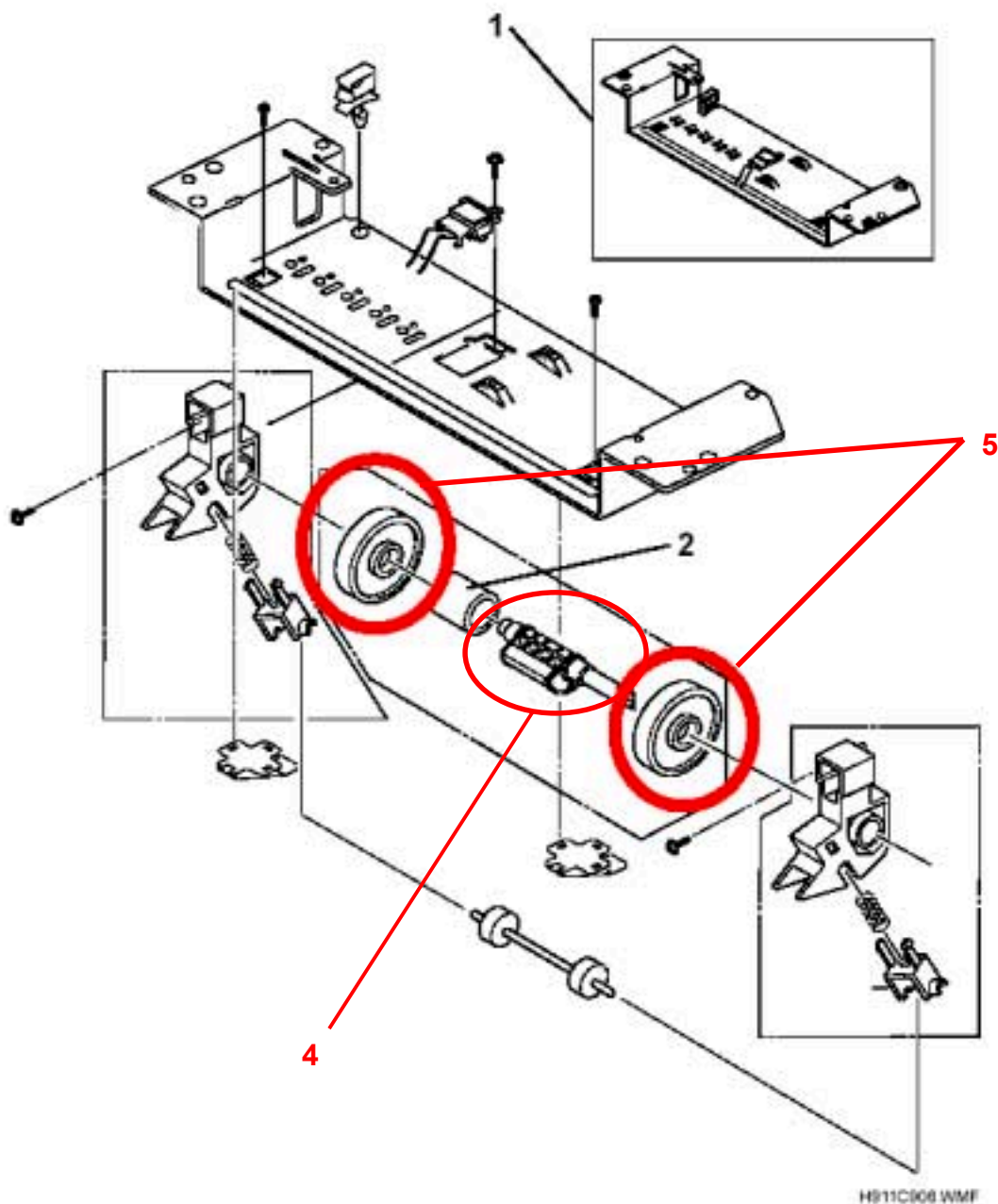
**Reason:** Part number control error at the vendor side.

### Applicable models:

	H911			H912	
	21	27	29	17	27
H9119598	√	√	√	√	√



## 6. PLATE-UPPER UNIT ASSEMBLY



Model: Model L1		Date: 04-Apr-06	No.: MH911017
Modified Article: Parts Catalog Correction		Prepared by: T. Shintani	
From: 1st Tech. Support Sec. Service Support Dept.			
Reason for Modification:	<input checked="" type="checkbox"/> Parts catalog correction <input type="checkbox"/> Vendor change <input type="checkbox"/> Other <input type="checkbox"/> To facilitate assembly <input type="checkbox"/> To improve reliability <input type="checkbox"/> To meet standards <input type="checkbox"/> Part standardization <input type="checkbox"/> Product Safety    (     )		

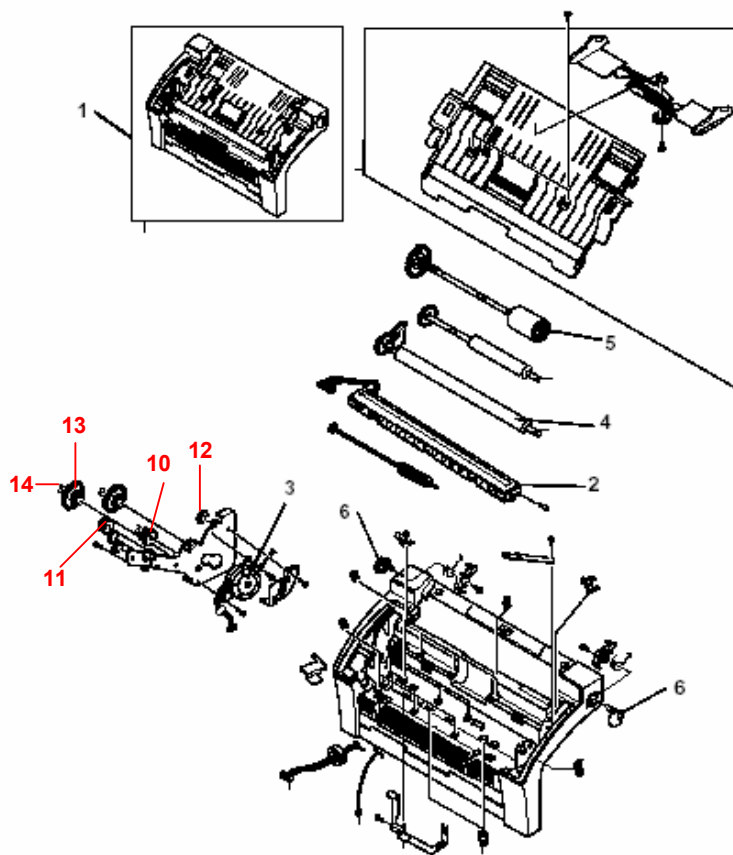
Part Number	Description	Q'ty	Page	Index	Note
H9119599	GEAR 39/20	1	13	10	-
H9119600	GEAR IDLE 30	1	13	11	-
H9119601	GEAR UDLE 25	3	13	12	-
H9119602	GEAR TRANS	2	13	13	-
H9119603	C-RING	3	13	14	-
H9119604	GEAR-IN 47	1	7	18	-
H9119605	HUB GEAR	1	7	19	-
H9119606	GEAR-OUT 47	1	7	20	-
H9119607	GEAR 83/35	1	7	21	-

**Change:** These parts were added.

**Reason:** A request was received from the field.

**Note:** See the illustration as follows.

## 9. FRONT ASSEMBLY

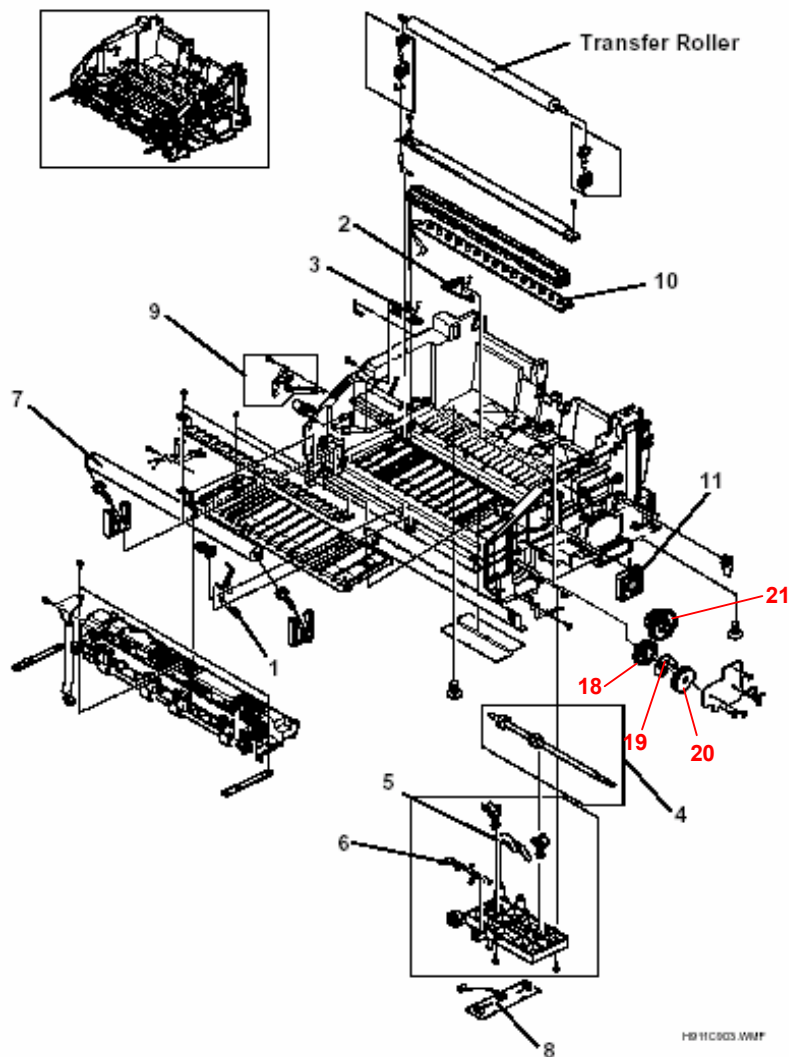


Model: Model L1

Date: 04-Apr-06

No.: MH911017

## 4. FRAME LOWER ASSEMBLY



Model: Model L1		Date: 23 -Feb-07	No.: MH911018
Modified Article: Parts Catalog Correction		Prepared by: T. Shintani	
From: 1st Tech. Support Sec. Service Support Dept.			
Reason for Modification:	<input checked="" type="checkbox"/> Parts catalog correction <input type="checkbox"/> Vendor change <input type="checkbox"/> Other <input type="checkbox"/> To facilitate assembly <input type="checkbox"/> To improve reliability <input type="checkbox"/> To meet standards <input type="checkbox"/> Part standardization <input type="checkbox"/> Product Safety    (     )		

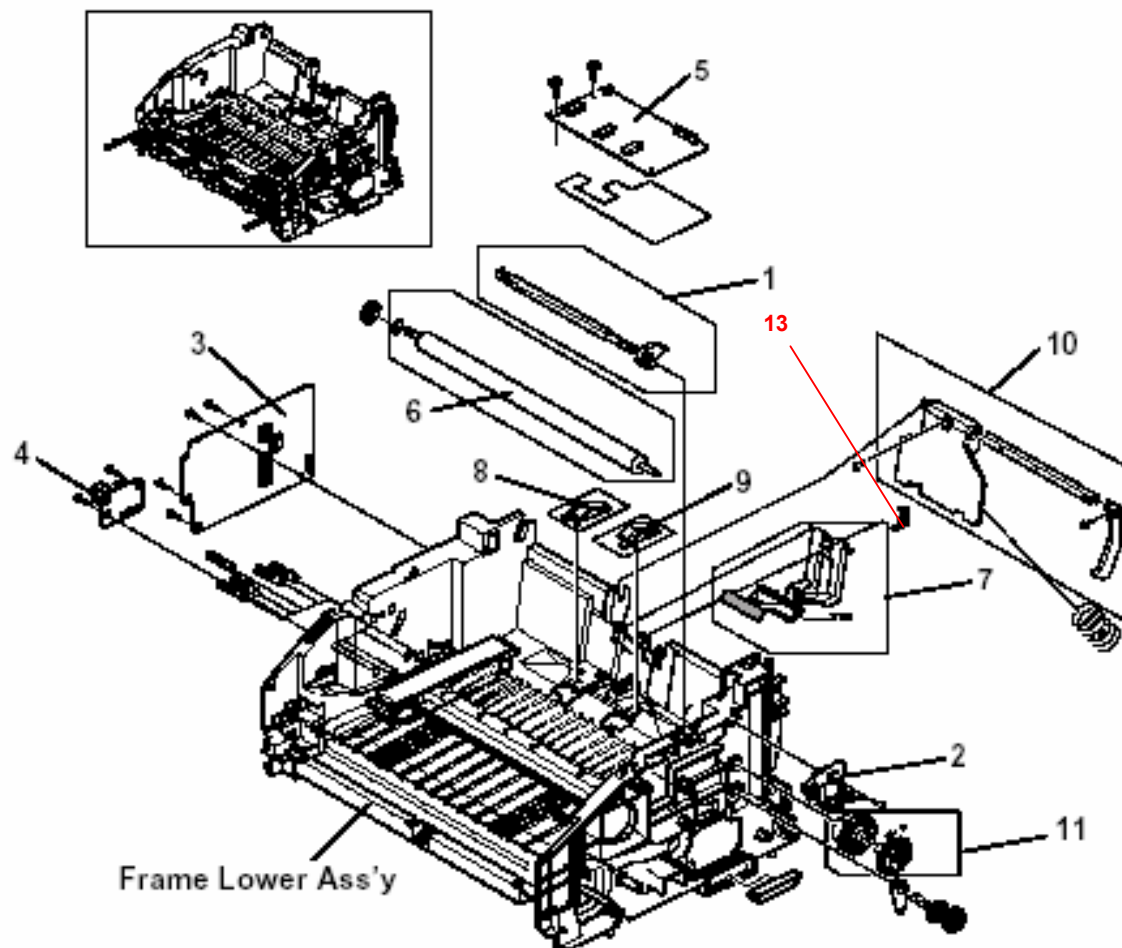
Part Number	Description	Q'ty	Page	Index	Note
H9117500	CAP - FRICTION PAD	1	5	13	-

**Change:** This part was added.

**Reason:** A request was received from the field.

**Note:** See the illustration as follows.

## 3. ENGINE ASSEMBLY



4/20/07 10:58 AM

Model: Model L1		Date: 20-Jun-07	No.: MH911019
Modified Article: Parts Catalog Correction		Prepared by: T. Shintani	
From: 1st Tech. Support Sec. Service Support Dept.			
Reason for Modification:	<input checked="" type="checkbox"/> Parts catalog correction <input type="checkbox"/> Vendor change <input type="checkbox"/> Other <input type="checkbox"/> To facilitate assembly <input type="checkbox"/> To improve reliability <input type="checkbox"/> To meet standards <input type="checkbox"/> Part standardization <input type="checkbox"/> Product Safety    (    )		

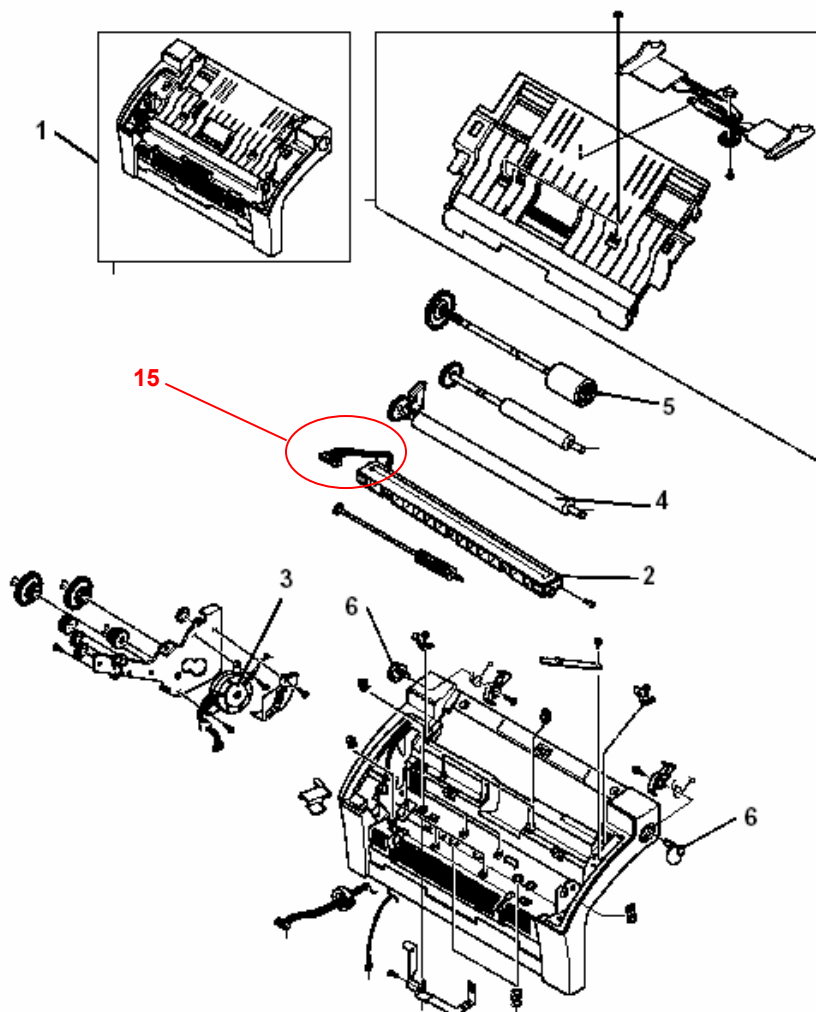
Part Number	Description	Q'ty	Page	Index	Note
H9117501	HARNESS – CIS 1A	1	13	15	-
H9127500	HARNESS – CIS 1B	1	13	15	-

**Change:** These parts was added

**Reason:** A request was received from the field.

**Note:** See the illustration as follows.

## 9. FRONT ASSEMBLY



H911C007.WMF