



VM Card

Operating Instructions Extended Feature Settings Device Reference

-
- 1 Introduction
 - 2 Screens
 - 3 Startup Setting
 - 4 Change Allocation
 - 5 Extended Feature Info
 - 6 Administrator Tools
 - 7 Switching between Extended Features
 - 8 Appendix

TABLE OF CONTENTS

Notice.....	3
Important.....	3
How to Read This Manual.....	4
Symbols.....	4
Notes.....	4
1. Introduction	
<hr/>	
What are Extended Features?.....	5
Types of Extended Features.....	5
This Manual.....	6
2. Screens	
<hr/>	
Displaying the Extended Feature Settings Screen.....	7
Quitting the Extended Feature Settings Screen.....	9
Extended Feature Settings Screen.....	10
Startup Setting screen.....	10
Change Allocation Screen.....	11
Extended Feature Info Screen.....	13
Administrator Tools Screen.....	14
Other Screens.....	16
3. Startup Setting	
<hr/>	
Starting and Stopping Extended Features.....	23
Starting Extended Features.....	23
Stopping Extended Features.....	24
Setting Priority.....	26
4. Change Allocation	
<hr/>	
Changing Allocated Function Keys.....	27
5. Extended Feature Info	
<hr/>	
Displaying Extended Feature Information.....	31
Setting Auto Start.....	32
6. Administrator Tools	
<hr/>	
Setting Heap / Stack Size.....	35
7. Switching between Extended Features	
<hr/>	
Other Functions Screen.....	39

Selecting the Features You Want to Use.....	41
---	----

8. Appendix

Trademarks.....	43
-----------------	----

INDEX	45
--------------------	----

Notice

Important

In no event will the company be liable for direct, indirect, special, incidental, or consequential damages as a result of handling or operating the machine.

How to Read This Manual

Symbols

This manual uses the following symbols:

 **Important**

Indicates points to pay attention to when using the machine, and explanations of likely causes of paper misfeeds, damage to originals, or loss of data. Be sure to read these explanations.

 **Note**

Indicates supplementary explanations of the machine's functions, and instructions on resolving user errors.

 **Reference**

This symbol is located at the end of sections. It indicates where you can find further relevant information.

[]

Indicates the names of keys on the machine's display or control panels.

Notes

Contents of this manual are subject to change without prior notice.

Some illustrations in this manual might be slightly different from the machine.

Certain options might not be available in some countries. For details, please contact your local dealer.

Depending on which country you are in, certain units may be optional. For details, please contact your local dealer.

1. Introduction

What are Extended Features?

"Extended features" are features (applications) that enable you use this device more easily.

The extended features installed on a device differ according to users' requirements. For details about which extended features are installed on your device, ask the device manager.

Types of Extended Features

Extended features are classified into two types, Type-J^{*1}, and Type-C^{*2}, depending on the development environment.

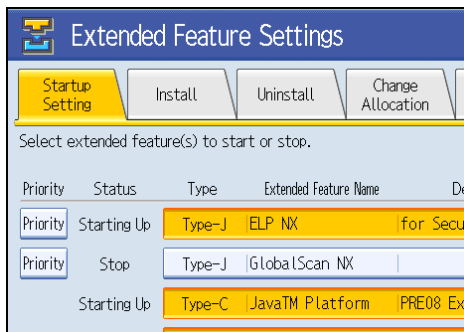
Type-J^{*1} extended features

These are features (applications) that are developed using Java.

Type-C^{*2} extended features

These are features (applications) that are developed using C language.

You can confirm which type of extended features are in use from the "Type" column of the list displayed on the Extended Feature Settings screen.



For details, see "Extended Feature Settings Screen".

*1 Embedded Software Architecture Application Java language version

*2 Embedded Software Architecture Application C language version

Reference

- p.10 "Extended Feature Settings Screen"

This Manual

1

This manual explains the [Startup Setting], [Change Allocation], [Extended Feature Info], and [Administrator Tools] regarding extended features installed in your devices.

If operating methods differ according to the type of extended feature, separate descriptions are given.

↓ Note

- The [Install], [Uninstall], [Add. Program Startup Setting], [Install Add. Program], [Uninstall Add. Program], and [Add. Program Info] of the Extended Feature Settings are not used and are therefore not explained in this manual. For information about these settings, consult your nearest sales or service representative.
- Confirm general extended feature operations with the administrator.
- Refer to Extended Feature Settings Web Reference for the use and operation of the Web Image Monitor.
- Depending on which device you are using, it may not be possible to implement operations from the device operating section. In such cases, perform operations using Web Image Monitor.

📖 Reference

- p.5 "Types of Extended Features"

2. Screens

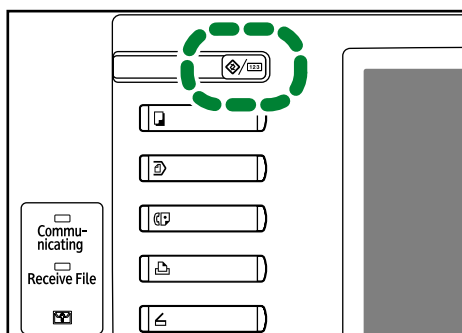
Displaying the Extended Feature Settings Screen

Display the Extended Feature Settings screen from the device operating section.

★ Important

- If Administrator Authentication Management is specified, contact your administrator.

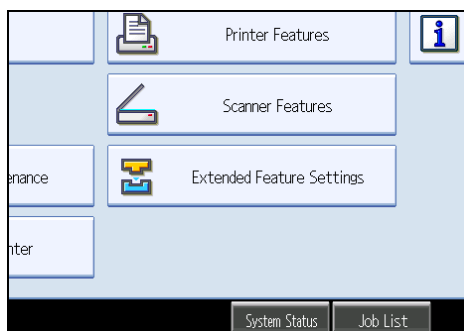
1. Press the [User Tools/Counter] key.



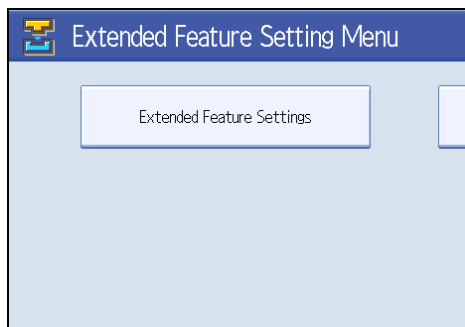
BXX021

The User Tools/Counter/Enquiry screen appears.

2. Press [Extended Feature Settings].



3. Press [Extended Feature Settings].



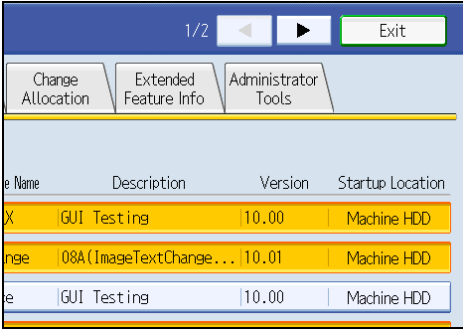
2

The Extended Feature Settings screen appears.

Quitting the Extended Feature Settings Screen

This section describes how to quit the Extended Feature Settings screen.

- 1. Press [Exit].



2

The User Tools/Counter/Enquiry screen returns.

Extended Feature Settings Screen

The Extended Feature Settings screen consists of ten screens: [Startup Setting], [Install], [Uninstall], [Change Allocation], [Extended Feature Info], [Administrator Tools], [Add. Program Startup Setting], [Install Add. Program], [Uninstall Add. Program], and [Add. Program Info] screen. The [Startup Setting] screen appears by default.

The following explanation covers [Startup Setting], [Change Allocation], [Extended Feature Info], and [Administrator Tools] screen items.

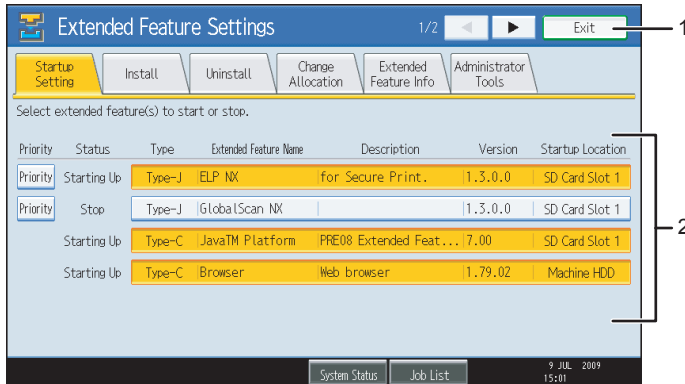
Note

- The [Install], [Uninstall], [Add. Program Startup Setting], [Install Add. Program], [Uninstall Add. Program], and [Add. Program Info] screens are unavailable.

Startup Setting screen

This section explains the various items on the Startup Setting screen.

For details about operations you can perform using this screen, see "Startup Setting".



BXX022

1. [Exit]

Press this to leave the extended feature settings.

2. Extended feature list

Displays a list of installed extended features.

[Priority]

Only Type-J^{*1} extended features are displayed.

If multiple Type-J extended features are installed, you can specify their activation priority. Extended features that have [Priority] highlighted are priority activated.

Status

Displays the status of extended features.

- Starting Up
Extended features are activated.
- Stop
Extended features are deactivated.
- Suspend
Only Type-J^{*1} extended features are displayed.
Extended features are activated but are in standby status. You must reboot before you can use these features.
- Waiting
Only Type-C^{*2} extended features are displayed.
Extended features are activated once the device is rebooted.
- Ending
Only Type-C^{*2} extended features are displayed.
Extended features are shut down once the device is rebooted.

*1 Embedded Software Architecture Application Java language version

*2 Embedded Software Architecture Application C language version

Type

Displays the types of extended features. For details, see "Types of Extended Features".

Extended Feature Name

Displays the names of extended features.

Description

Displays brief summaries of extended features.

Version

Displays the versions of extended features.

Startup Location

Displays the locations where extended features are installed.

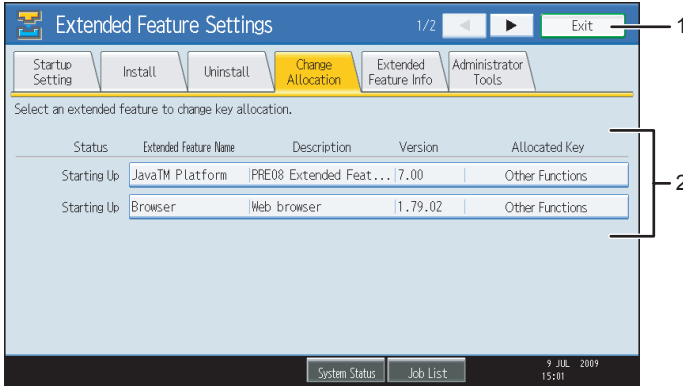
Reference

- p.23 "Startup Setting"
- p.5 "Types of Extended Features"

Change Allocation Screen

This section explains the various items on the Change Allocation screen.

For details about operations you can perform using this screen, see "Change Allocation".



BXX023

1. [Exit]

Press this to terminate extended feature settings.

2. Extended feature list

Displays a list of installed extended features.

Status

Displays the status of extended features.

- Starting Up
Extended features are activated.
- Stop
Extended features are deactivated.
- Suspend
Only Type-J*¹ extended features are displayed.
Extended features are activated but are in standby status. Use of these features requires rebooting.
- Waiting
Only Type-C*² extended features are displayed.
Extended features are activated once the device is rebooted.
- Ending
Only Type-C*² extended features are displayed.
Extended features are shut down once the device is rebooted.

*¹ Embedded Software Architecture Application Java language version

*² Embedded Software Architecture Application C language version

Extended Feature Name

Displays the names of extended features.

Description

Displays brief summaries of extended features.

Version

Displays the versions of extended features.

Allocated Key

Displays the name of function key that is allocated the extended feature.

Reference

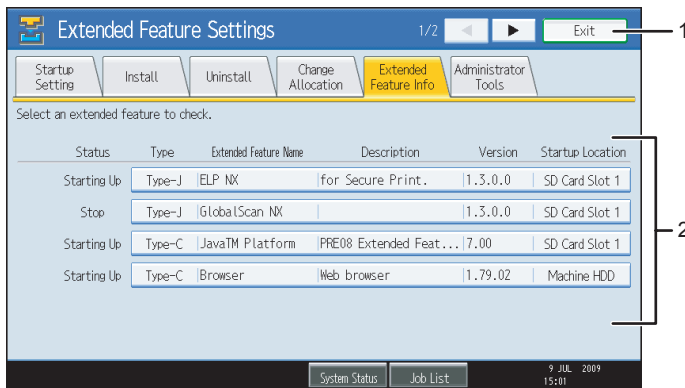
- p.27 "Change Allocation"

2

Extended Feature Info Screen

This section explains the various items on the Extended Feature Info screen.

For details about operations you can perform using this screen, see "Extended Feature Info".



BXX024

1. [Exit]

Press this to terminate extended feature settings.

2. Extended feature list

Displays a list of installed extended features.

Status

Displays the status of extended features.

- Starting Up
Extended features are activated.
- Stop
Extended features are deactivated.
- Suspend
Only Type-J*¹ extended features are displayed.
Extended features are activated but are in standby status. Use of these features requires rebooting.

- Waiting
Only Type-C*² extended features are displayed.
Extended features are activated once the device is rebooted.
- Ending
Only Type-C*² extended features are displayed.
Extended features are shut down once the device is rebooted.

*¹ Embedded Software Architecture Application Java language version

*² Embedded Software Architecture Application C language version

Type

Displays the types of extended features. For details, see "Types of Extended Features".

Extended Feature Name

Displays the names of extended features.

Description

Displays brief summaries of extended features.

Version

Displays the versions of extended features.

Startup Location

Displays the locations where extended features are installed.

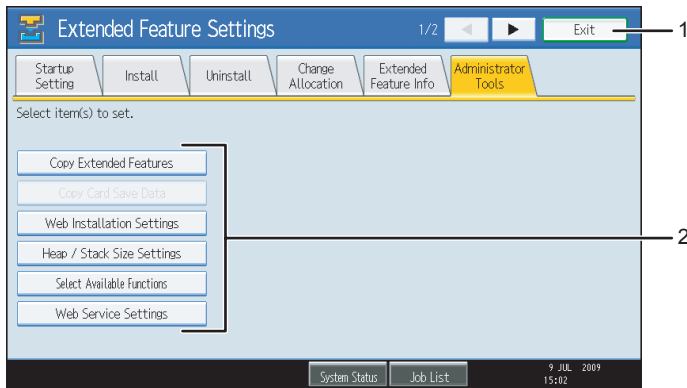
Reference

- p.31 "Extended Feature Info"
- p.5 "Types of Extended Features"

Administrator Tools Screen

This section explains the various items on the Administrator Tools screen.

For details about operations you can perform using this screen, see "Administrator Tools".



BXX025

1. [Exit]

Press this to leave the extended feature settings.

2. Settings list

Displays a list of settings.

- [Copy Extended Features]
Not available.
- [Copy Card Save Data]
Not available.
- [Web Installation Settings]
Specify installation of extended features through the network.
- [Heap / Stack Size Settings]
Specify the heap and stack size necessary for extended features.
- [Select Available Functions]
Specify enable/disable for Java™ Platform functions from the list.
- [Web Service Settings]
Configure the network-related settings.

↓ Note

- You can specify [Heap / Stack Size Settings] only.

📖 Reference

- p.35 "Administrator Tools"

Other Screens

The following explanation covers [Install], [Uninstall], [Add. Program Startup Setting], [Install Add. Program], [Uninstall Add. Program], and [Add. Program Info] screen items.

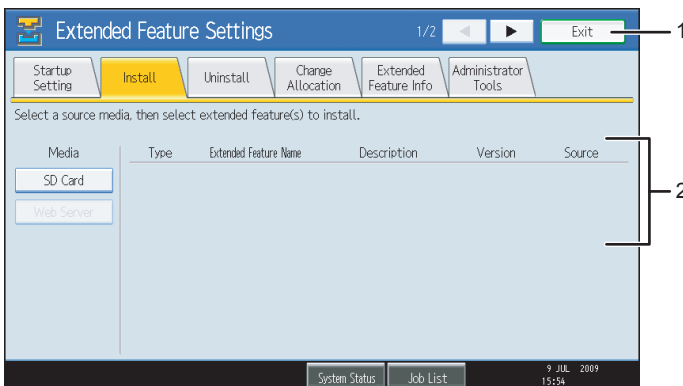
↓ Note

- The [Install], [Uninstall], [Add. Program Startup Setting], [Install Add. Program], [Uninstall Add. Program], and [Add. Program Info] screens are unavailable.
- For information about these settings, consult your nearest sales or service representative.

Install Screen

This section explains the various items on the Install screen.

This screen allows you to install extended features.



BXX028

1. [Exit]

Press this to leave the extended feature settings.

2. Extended features list

Displays a list of installable extended features.

Media

Select the storage media to use for performing installation of the extended features.

Type

Displays the types of extended features. For details, see "Types of extended features".

Extended Feature Name

Displays the names of extended features.

Description

Displays brief summaries of extended features.

Version

Displays the versions of extended features.

Source

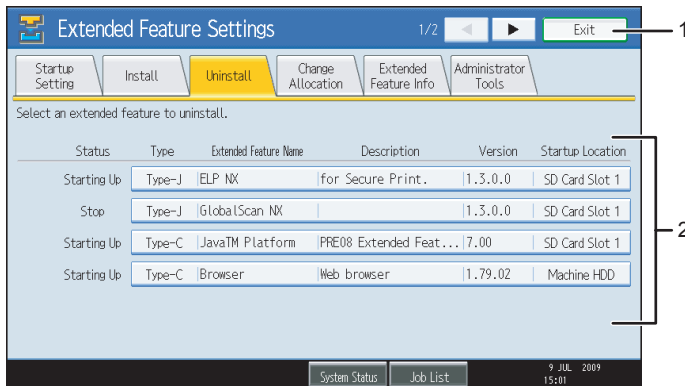
Displays the storage location for performing installation of the extended features.

2

Uninstall Screen

This section explains the various items on the Uninstall screen.

This screen allows you to uninstall extended features.



BXX029

1. [Exit]

Press this to leave the extended feature settings.

2. Extended feature list

Displays a list of installed extended features.

Status

Displays the status of extended features.

- Starting Up
Extended features are activated.
- Stop
Extended features are deactivated.
- Suspend
Only Type-J*¹ extended features are displayed.
Extended features are activated but are in standby status. You must reboot before you can use these features.

- Waiting
Only Type-C*² extended features are displayed.
Extended features are activated once the device is rebooted.
- Ending
Only Type-C*² extended features are displayed.
Extended features are shut down once the device is rebooted.

*1 Embedded Software Architecture Application Java language version

*2 Embedded Software Architecture Application C language version

Type

Displays the types of extended features. For details, see "Types of extended features".

Extended Feature Name

Displays the names of extended features.

Description

Displays brief summaries of extended features.

Version

Displays the versions of extended features.

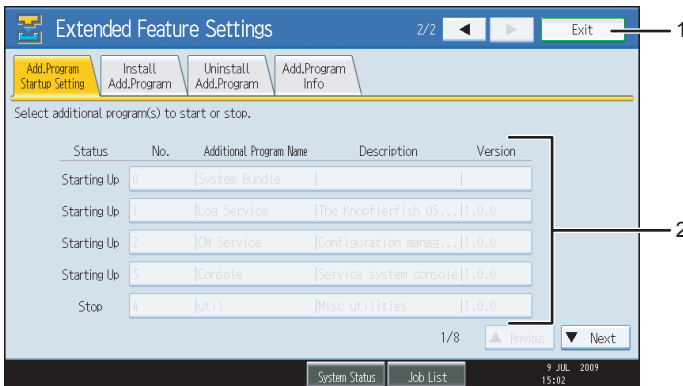
Startup Location

Displays the locations where extended features are installed.

Add. Program Startup Setting Screen

This section explains the various items on the Add. Program Startup Setting screen.

This screen allows you to start and stop installed additional programs.



BXX030

1. [Exit]

Press this to leave the extended feature settings.

2. List of additional programs

Displays a list of additional programs that are installed.

Status

Displays the status of additional program.

- Starting Up
Additional program are activated.
- Stop
Additional program are deactivated.
- Suspend
Additional program are activated but are in standby status. You must reboot before you can use these features.

No.

Displays the ID of each additional program that is installed.

Additional Program Name

Displays the names of additional program.

Description

Displays brief summaries of additional program.

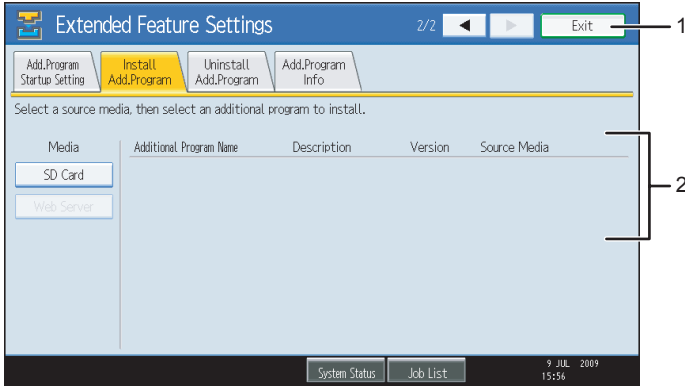
Version

Displays the versions of additional program.

Install Add. Program Screen

This section explains the various items on the Install Add. Program screen.

This screen allows you to install additional program.



BXX031

1. [Exit]

Press this to leave the extended feature settings.

2. Additional program list

Displays a list of installable additional programs.

Media

Select the storage media to use for performing installation of the additional program.

Additional Program Name

Displays the names of additional program.

Description

Displays brief summaries of additional program.

Version

Displays the versions of additional program.

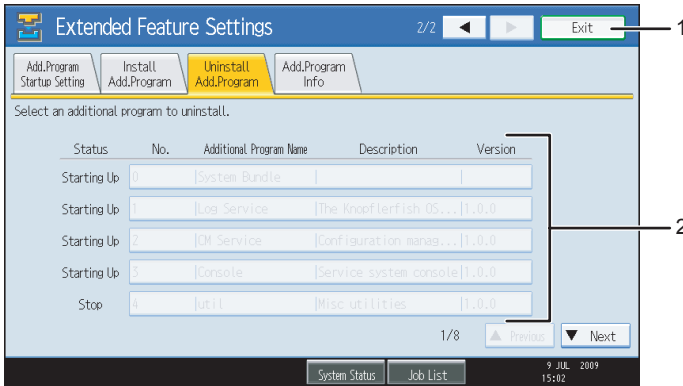
Source Media

Displays the storage location for performing installation of the additional program.

Uninstall Add. Program Screen

This section explains the various items on the Uninstall Add. Program screen.

This screen allows you to uninstall additional program.



BXX032

1. [Exit]

Press this to leave the extended feature settings.

2. Additional program list

Displays a list of installed additional program.

Status

Displays the status of additional program.

- Starting Up
Additional program are activated.
- Stop
Additional program are deactivated.
- Suspend
Additional program are activated but are in standby status. You must reboot before you can use these features.

No.

Displays the ID of each additional program that is installed.

Additional Program Name

Displays the names of additional program.

Description

Displays brief summaries of additional program.

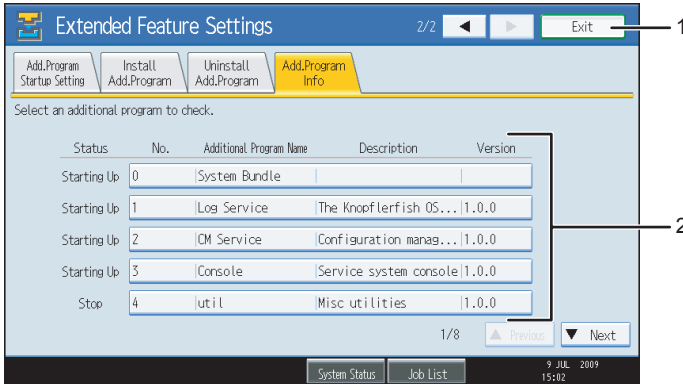
Version

Displays the versions of additional program.

Add. Program Info Screen

This section explains the various items on the Add. Program Info screen.

This screen allows you to check the details of each additional program that is installed.



BXX033

1. [Exit]

Press this to leave the extended feature settings.

2. Additional program list

Displays a list of installed additional program.

Status

Displays the status of additional program.

- Starting Up
Additional program are activated.
- Stop
Additional program are deactivated.
- Suspend
Additional program are activated but are in standby status. You must reboot before you can use these features.

No.

Displays the ID of each additional program that is installed.

Additional Program Name

Displays the names of additional program.

Description

Displays brief summaries of additional program.

Version

Displays the versions of additional program.

3. Startup Setting

This chapter explains operations you can perform using the [Startup Setting] of the Extended Feature Settings screen.

Starting and Stopping Extended Features

For details about items on the Startup Setting screen, see "Startup Setting Screen".

Reference

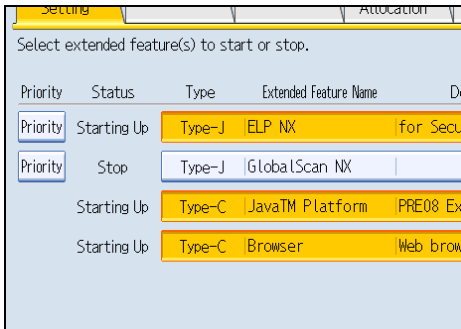
- p.10 "Startup Setting screen"

Starting Extended Features

1. Display the Extended Feature Settings screen.

The Startup Setting screen appears and a list of installed extended features is displayed.

2. Press the extended features you want to start, from those whose "Status" is "Stop", "Suspend", or "Ending".



Depending on the type and status of the extended features you press, the machine responds as follows:

Type-J^{*1} extended features

- If "Suspend" is displayed:
The extended features are de-highlighted and their "Status" changes to "Stop".
If you press the extended features again, they are highlighted and their "Status" changes to "Starting Up". The extended features start and become usable.

- If "Stop" is displayed:
The extended features are highlighted and their "Status" changes to "Starting Up". The extended features start and become usable.

Type-C^{*2} extended features

- If "Ending" is displayed:

The extended features are highlighted and their "Status" changes to "Starting Up". The extended features start and become usable.

- If "Stop" is displayed:

The extended features are highlighted and their "Status" changes to "Waiting".

After rebooting the device, their "Status" changes to "Starting Up". The extended features start and become usable.

If you do not reboot and press the same highlighted extended feature again, its "Status" changes back to "Stop".

*1 Embedded Software Architecture Application Java language version

*2 Embedded Software Architecture Application C language version

3. Press [Exit].

Note

- If "Waiting" is displayed, their "Status" changes to "Starting Up" after rebooting the device. The extended features start and become usable.

Reference

- p.7 "Displaying the Extended Feature Settings Screen"

Stopping Extended Features

Normally it is not necessary to stop extended features.

Extended features that are required for communication with the server may stop if the server is deactivated.

1. Display the Extended Feature Settings screen.

The Startup Setting screen appears and a list of installed extended features is displayed.

2. Press the extended features you want to stop, from those whose "Status" is "Starting Up", "Suspend" or "Waiting".

Priority	Status	Type	Extended Feature Name	Description
Priority	Starting Up	Type-J	ELP NX	for Secu
Priority	Stop	Type-J	GlobalScan NX	
	Starting Up	Type-C	JavaTM Platform	PRE08 Ex
	Starting Up	Type-C	Browser	Web brow

Depending on the type and status of the extended features you press, the machine responds as follows:

Type-J^{*1} extended features

- If "Suspend" is displayed:
The extended features are de-highlighted and their "Status" changes to "Stop". The extended features stop and become unusable.
- If "Starting Up" is displayed:
The extended features are de-highlighted and their "Status" changes to "Stop". The extended features stop and become unusable.

Type-C^{*2} extended features

- If "Waiting" is displayed:
The extended features are de-highlighted and their "Status" changes to "Stop". The extended features stop and become unusable.
- If "Starting Up" is displayed:
The extended features are de-highlighted and their "Status" changes to "Ending".
After rebooting the device, their "Status" changes to "Stop". The extended features stop and become unusable.
If you do not reboot and press the same de-highlighted extended feature again, its "Status" changes back to "Starting Up".

*1 Embedded Software Architecture Application Java language version

*2 Embedded Software Architecture Application C language version

3. Press [Exit].**↓ Note**

- If "Ending" is displayed, their "Status" changes to "Stop" after rebooting the device. The extended features stop and become unusable.

📖 Reference

- p.7 "Displaying the Extended Feature Settings Screen"

Setting Priority

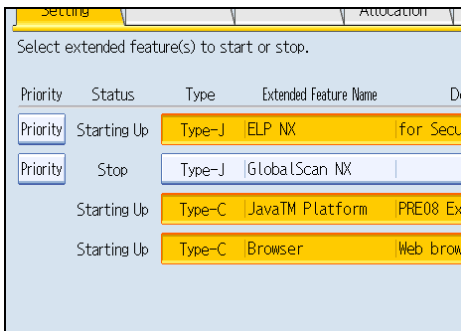
You can set priority for Type-J extended features only.

If multiple Type-J extended features are installed, you can specify their activation priority. For details, see "Selecting the Features You Want to Use".

1. Display the Extended Feature Settings screen.

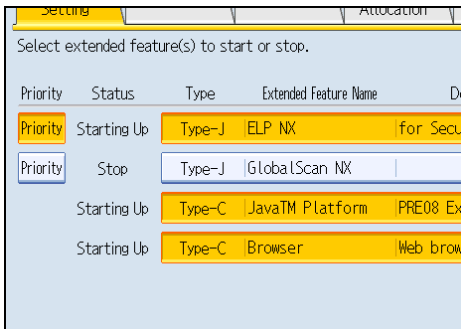
The Startup Setting screen appears and a list of installed extended features is displayed.

If multiple Type-J extended features are installed, [Priority] is displayed at the beginning of the line.



2. Press [Priority] for the Type-J extended features you want to priority activate.

[Priority] is highlighted and the setting is made.



3. Press [Exit].

Reference

- p.41 "Selecting the Features You Want to Use"
- p.7 "Displaying the Extended Feature Settings Screen"

4. Change Allocation

This chapter explains operations you can perform using [Change Allocation] on the Extended Feature Settings screen.

Changing Allocated Function Keys

You can access extended features by pressing the function keys allocated to them. Use the following procedure to change the extended features allocated to function keys.

Depending on the type of extended features, allocation varies as follows:

Type-J*¹ extended features

One function key is allocated to Type-J*¹ extended features. Even if multiple Type-J*¹ extended features are installed, you cannot allocate function keys to them individually.

If multiple Type-J*¹ extended features are installed, you can specify their activation priority. For details, see "Setting Priority".

If no priorities are set or if the same function key is allocated to Type-C*² extended features, you can switch between functions that are activated on the Other Functions screen. For details, see "Switching between Extended Features".

Type-C*² extended features

If multiple Type-C*² extended features are installed, you can allocate a function key to each.

If multiple extended features are allocated to a single function key, you can switch between functions that are activated on the Other Functions screen. For details, see "Switching between Extended Features".

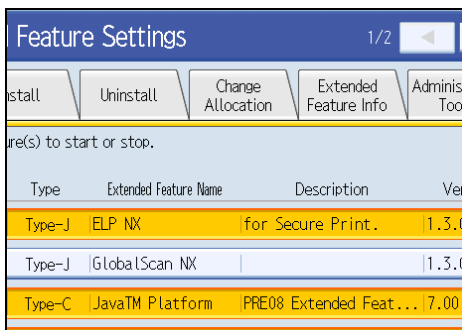
*¹ Embedded Software Architecture Application Java language version

*² Embedded Software Architecture Application C language version

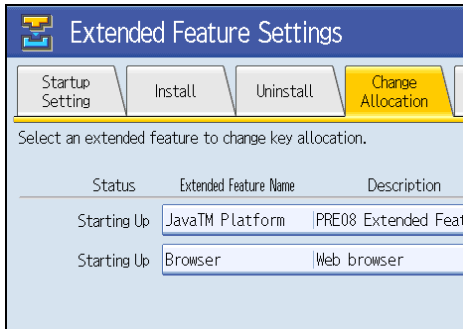
1. Display the Extended Feature Settings screen.

The Startup Setting screen appears and a list of installed extended features is displayed.

2. Press [Change Allocation].



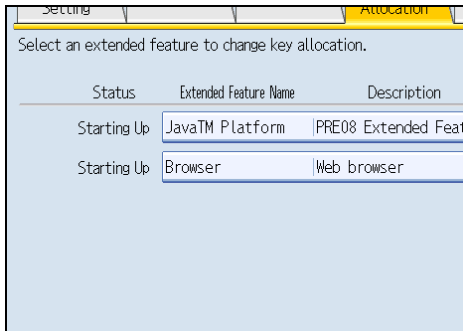
The Change Allocation screen appears.



4

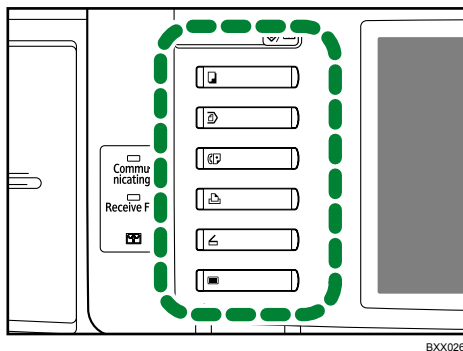
Currently allocated function keys are displayed to the right of the list, under "Allocated Key". For details about items on the Change Allocation screen, see "Change Allocation Screen".

3. Press the extended feature whose allocated function key you want to change.



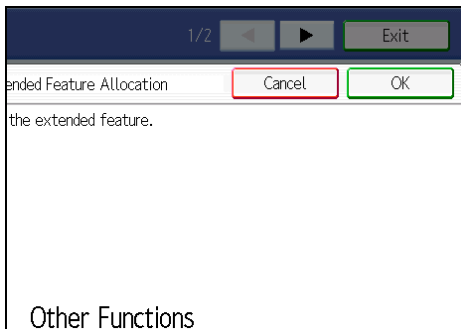
The Change Extended Feature Allocation screen appears.

4. Press the control panel function key you want to allocate the extended feature to.



The name of the newly allocated function key is displayed on the Change Extended Feature Allocation screen under "New :".

5. Press [OK].

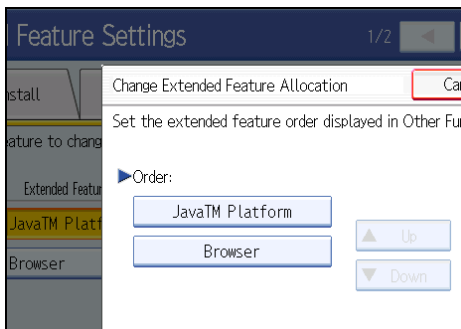


If you press [Cancel] or [OK] without pressing the function key you want to allocate the extended feature to, the Change Allocation screen returns and changes made to function key allocations are not applied.

If the newly allocated function key is the [Other Functions] key and other extended features are already allocated to it, a screen for changing their order appears. Proceed to step 6.

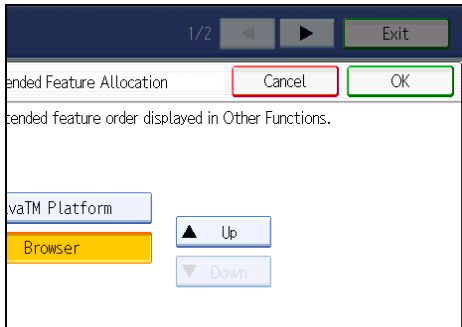
If the newly allocated function key is not the [Other Functions] key, changes made to the function key allocation are applied and the Change Allocation screen returns. Proceed to step 8.

6. Press and highlight the extended feature whose order you want to change, and then move it by pressing [▲Up] or [▼Down].



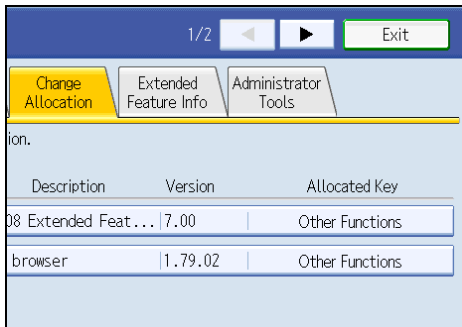
The order set here is displayed on the Other Functions screen that appears when you switch between extended features. For details, see "Other Functions Screen".

7. Press [OK].



The Change Allocation screen returns.

4 8. Confirm that the changed allocation is displayed under "Allocated Key", and then press [Exit].



↓ Note

- If the device has [Registered Program] key on its operation panel, you can allocate extended features to them.
- If multiple extended features are installed, use the [Registered Program] key for different types of extended features.
- The "Allocated Key" is blank if extended features do not require an allocated function key.
- You cannot select extended features that do not require allocated function keys or cannot have function keys allocated to them.
- The number and names of the function keys differ according to the devices being used.

📖 Reference

- p.11 "Change Allocation Screen"
- p.26 "Setting Priority"
- p.39 "Switching between Extended Features"
- p.7 "Displaying the Extended Feature Settings Screen"
- p.39 "Other Functions Screen"

5. Extended Feature Info

This chapter explains operations you can perform using the [Extended Feature Info] of the Extended Feature Settings screen.

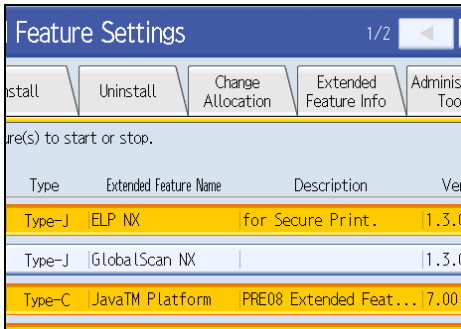
Displaying Extended Feature Information

You can display and confirm details about extended features.

1. Display the Extended Feature Settings screen.

The Startup Setting screen appears and a list of installed extended features is displayed.

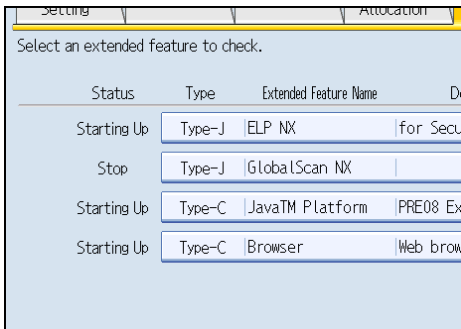
2. Press [Extended Feature Info].



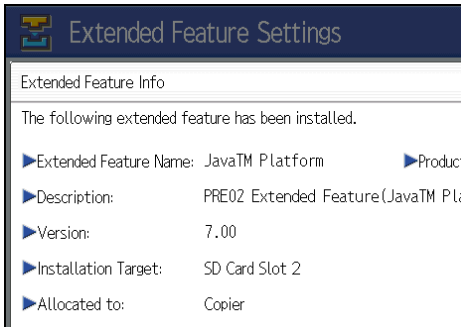
The Extended Feature Info screen appears.

For details about items on this screen, see "Extended Feature Info Screen".

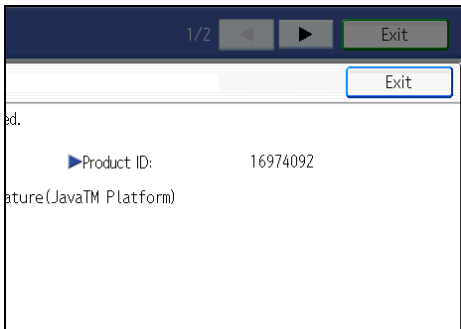
3. Select the extended feature whose details you want to view.



4. Confirm the details.



5. Press [Exit].



The Extended Feature Info screen returns.

6. Press [Exit].

Note

- "Auto Start" settings are possible on this screen in the case of Type-J extended features. For details, see "Setting Auto Start".

Reference

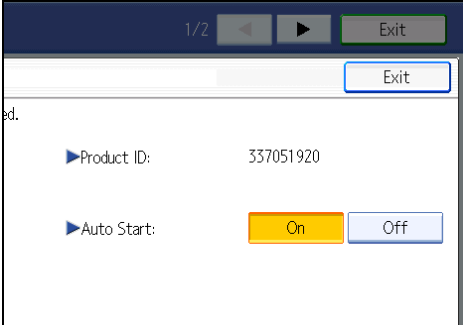
- p.13 "Extended Feature Info Screen"
- p.7 "Displaying the Extended Feature Settings Screen"
- p.32 "Setting Auto Start"

Setting Auto Start

You can set "Auto Start" for Type-J extended features only.

If "Auto Start" is set for [On], Type-J extended features are automatically activated when the device is booted up.

1. Press and highlight [On] of "Auto Start".



"Auto Start" is set.

6. Administrator Tools

This chapter explains operations you can perform using the [Administrator Tools] of the Extended Feature Settings screen.

Setting Heap / Stack Size

Change the settings of "Heap Size"*¹ and "Stack Size"*² for Type-J extended features.

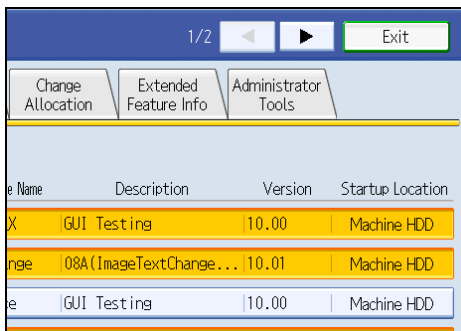
*¹ "Heap" refers to a memory area used by Java™ Platform and related applications.

*² "Stack" refers to a memory area used to store temporary data for an application.

1. Display the Extended Feature Settings screen.

The Startup Setting screen appears and a list of installed extended features is displayed.

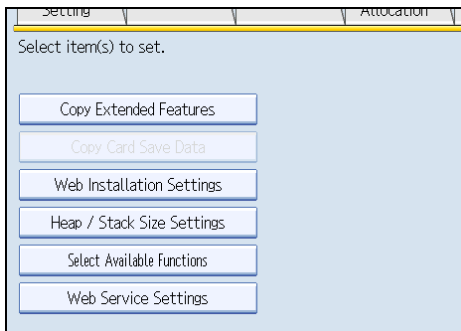
2. Press [Administrator Tools].



The Administrator Tools screen appears.

For details about items on the Administrator Tools screen, see "Administrator Tools Screen".

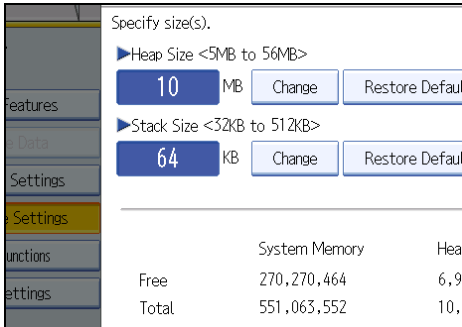
3. Press [Heap / Stack Size Settings].



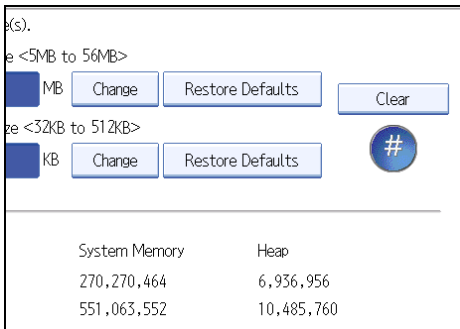
The screen for setting "Heap Size" and "Stack Size" appears.

The current "Free" and "Total" capacity of System Memory and Heap appear at the bottom of the screen.

- To change the heap size, press [Change] under "Heap Size". To change the stack size, press [Change] under "Stack Size".

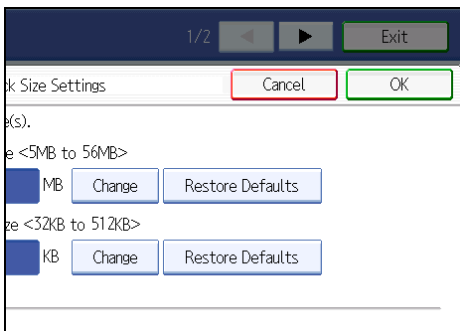


- Using the control panel's number keys, enter the values for "Heap Size" and "Stack Size", and then press [#].



To restore the default values, press [Restore Defaults].

- Press [OK].



The Administrator Tools screen returns.

- Press [Exit].

Note

- You can specify [Heap / Stack Size Settings] only.
- Changed settings are activated after the device has been rebooted.

- The default "Heap Size" is 10 MB, and the default "Stack Size" is 64 KB.

Reference

- p.14 "Administrator Tools Screen"
- p.7 "Displaying the Extended Feature Settings Screen"

7. Switching between Extended Features

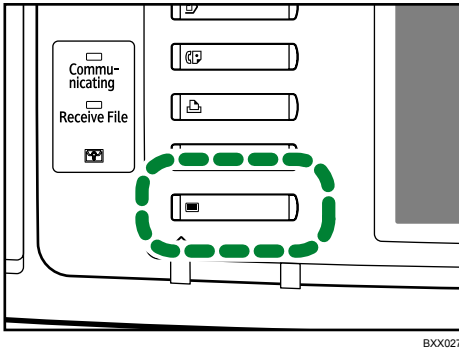
Other Functions Screen

To begin using extended features, press the function keys. If multiple features are allocated to a single function key, the Other Functions screen appears, which allows you to select the feature you want to use.

Below is an example Other Functions screen.

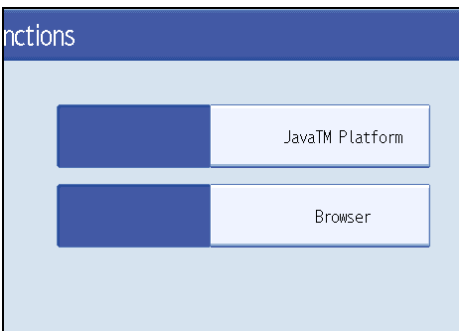
Example: multiple features are allocated to the [Other Functions] key.

1. Press [Other Functions] key.



The Other Functions screen appears.

2. Press the function you want to use.



This screen does not appear if JavaTM Platform is the only Type-C extended feature.

Type-J^{*1} extended features

Since Type-J^{*1} extended features are allocated to a single function key, even if there are multiple Type-J^{*1} extended features installed, they are displayed on the Other Functions screen as one.

Type-C^{*2} extended features

Since it is possible to allocate function keys to individual Type-C^{*2} extended features, if multiple Type-C^{*2} extended features are installed, multiple features are displayed on the Other Functions screen.

*1 Embedded Software Architecture Application Java language version

*2 Embedded Software Architecture Application C language version

Note

- If the device has [Registered Program] key on its operation panel, you can allocate extended features to them.
- If multiple extended features are installed, use the [Registered Program] key for different types of extended features.
- Items displayed on the Other Functions screen differ according to the allocated function keys, type and number of installed extended features, etc.

Selecting the Features You Want to Use

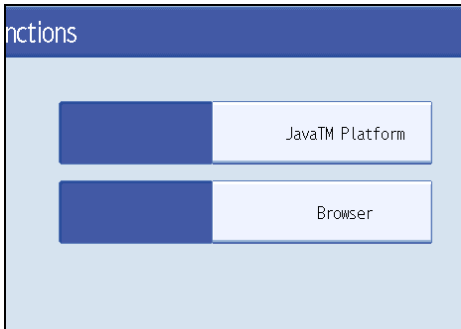
Use the Other Functions screen to select the extended features you want to use.

↓ Note

- Confirm general extended feature operations with the administrator.

Below is an example Other Functions screen.

Example: multiple features are allocated to the [Other Functions] key.



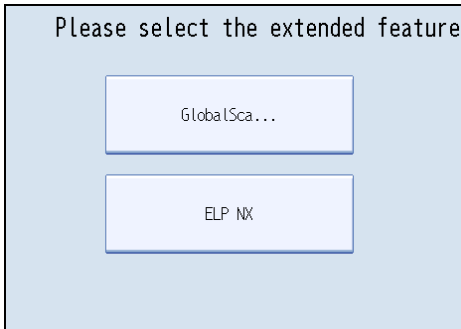
This screen does not appear if JavaTM Platform is the only Type-C extended feature.

Selecting Type-J*¹ extended features

1. Press [JavaTM Platform].

- If there is only one Type-J*¹ extended feature installed:
That feature is then activated.
- If multiple Type-J*¹ extended features are installed:
 - If there is an extended feature with priority settings:
The prioritized Type-J*¹ extended features are activated first.
 - If there are no prioritized extended features:
The extended feature selection screen appears. Proceed to 2.

2. Press the Type-J^{*1} extended feature you want to use.



The Type-J^{*1} extended feature you selected are activated.

Selecting Type-C^{*2} extended features

1. Press the Type-C^{*2} extended feature you want to use.

The Type-C^{*2} extended feature you selected are activated.

^{*1} Embedded Software Architecture Application Java language version

^{*2} Embedded Software Architecture Application C language version

Note

- The screen displays a maximum of six Type-J extended features. If there are more than six installed, scroll the screen by pressing [▲] and [▼] at the bottom of the screen.

8. Appendix

Trademarks

Java and all Java-based trademarks and logos are trademarks or registered of Sun Microsystems, Inc. in the United States and other countries.

INDEX

A

Administrator Tools screen..... 14

C

Change Allocation screen..... 11

Changing allocated function keys.....27

D

Displaying extended feature Information.....31

Displaying the Extended Feature Settings screen....
.....7

E

Extended Feature Info screen.....13

Extended Feature Settings Screen..... 10

O

Other Functions screen.....39

S

Selecting the features you want to use.....41

Setting Auto Start.....32

Setting Heap / Stack Size.....35

Setting priority.....26

Starting and Stopping extended features.....23

Starting extended features.....23

Startup Setting screen.....10

Stopping extended features.....24

T

This manual.....6

Type-C extended features.....5

Type-J extended features.....5

Types of extended features.....5

W

What are extended features?.....5

MEMO

MEMO

MEMO

VM Card Operating Instructions Extended Feature Settings Device Reference

