

Reissued: 01-April-15

Model: RICOH Scan CX v1	Date: 30-Oct-13	No.: RD769001c
-------------------------	-----------------	----------------

RTB Reissue

The items in ***bold italics*** were corrected or added.

Subject: RICOH Scan CX v1 Installation Manual		Prepared by: Seizoh Uchiyama	
From: Solution Support Sect., Solution Support Dept.			
Classification:	<input type="checkbox"/> Troubleshooting	<input type="checkbox"/> Part information	<input type="checkbox"/> Action required
	<input type="checkbox"/> Mechanical	<input type="checkbox"/> Electrical	<input checked="" type="checkbox"/> Service manual revision
	<input type="checkbox"/> Paper path	<input type="checkbox"/> Transmit/receive	<input type="checkbox"/> Retrofit information
	<input type="checkbox"/> Product Safety	<input type="checkbox"/> Other ()	<input type="checkbox"/> Tier 2

Reissued: 01-April-15

Model: RICOH Scan CX v1	Date: 30-Oct-13	No.: RD769001c
-------------------------	-----------------	----------------



RICOH Scan CX V1.1.x

Main Chapters

Read This First	3
Trademarks	3
Trademarks	3
Installation and Initial Configuration	4
Installation and Initial Configuration Flow	4
VM Card Installation	5
Java VM Configuration	5
RICOH Scan CX Embedded v1 Installation & Activation	6
Activation Check	7
Function Priority Setting.....	9
Uninstallation	10
Priority Feature Cancellation	10
RICOH Scan CX v1 Uninstallation	11
Appendix.....	12
VM Card Update	12

Reissued: 01-April-15

Model: RICOH Scan CX v1

Date: 30-Oct-13

No.: RD769001c

Read This First

Read This First

Trademarks

Trademarks

Microsoft®, Windows®, and MS-DOS® are registered trademarks of Microsoft Corporation in the United States and /or other countries.

PostScript® is a registered trademark of Adobe Systems, Incorporated.

PCL® is a registered trademark of Hewlett-Packard Company.

Ethernet® is a registered trademark of Xerox Corporation.

PowerPC® is a registered trademark of International Business Machines Corporation.

Other product names used herein are for identification purposes only and may be trademarks of their respective companies. We disclaim any and all rights involved with those marks.

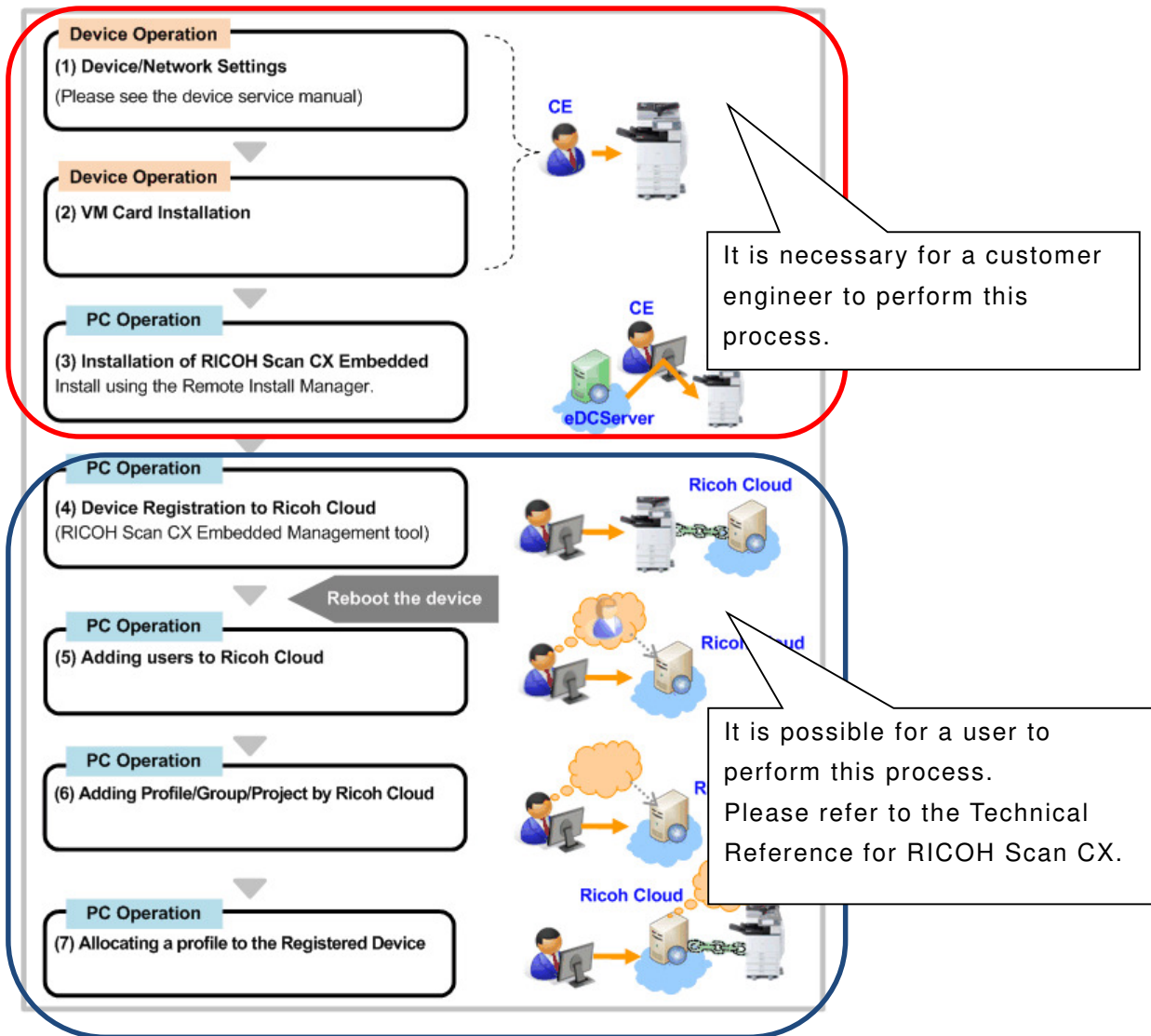
Reissued: 01-April-15

Model: RICOH Scan CX v1	Date: 30-Oct-13	No.: RD769001c
-------------------------	-----------------	----------------

Installation and Initial Configuration

Installation and Initial Configuration

Installation and Initial Configuration Flow



Reissued: 01-April-15

Model: RICOH Scan CX v1	Date: 30-Oct-13	No.: RD769001c
-------------------------	-----------------	----------------

Installation and Initial Configuration

VM Card Installation

 **Note**

- If the JavaVM is installed to the device’s Flash Memory (FM), this procedure is not necessary. In this case, please proceed to the “JavaVM Configuration” section.

- 1. Turn off the device’s main power and insert the VM card into the SD card slot.**
- 2. Press the device’s power button ON and wait until the automatic installation is completed.**
- 3. Confirm that [JavaTM Platform] is displayed via [Default Setting/Counter/Inquiry information].**
 - The installation operations for JavaTM Platform, and the application are CE operations.
VM card is used with being inserted after installation, too.

Java VM Configuration

1. Press the [User Tools/Counter] button.
2. Press [Extended Feature Settings] after the [User Tools / Counter / Enquiry] screen appears.
3. Press [Extended Feature Settings].
4. Press the [Administrator Tools] tab. Then, press [Heap / Stack Size Settings].
5. Set the heap size and stack size. If other ESA applications are also installed, set the same Heap and Stack size.

Model	Heap size	Stack size
11S or earlier	40MB (Default: 10MB)	64KB (Default: 64KB)
11A or later	48MB (Default: 16MB)	256KB (Default: 256KB)

Reissued: 01-April-15

Model: RICOH Scan CX v1

Date: 30-Oct-13

No.: RD769001c

Installation and Initial Configuration

RICOH Scan CX Embedded v1 Installation & Activation

Use Remote Install Manager to install & activate RICOH Scan CX Embedded V1. Please see the Service Manual of Remote Install Manager.

Important:

The product key used on “3. Installation/ Activation→4. [Install Software] Enter product key”, in the Remote Install Manager service manual is as follows:

In case of RE, please use the following product key “*LMR87-RKGDB-5HXU3-EJN8M-S49WN*”.

Note:

- When installing "Ricoh Scan CX Embedded", the product key used needs to be a shared key. However, because a product key has a limit to how many licenses it can provide, there is a limit to the number of devices the same product key can be used for. Before a product key reaches it's license limit, we will release a new product key via this service manual.
- Before installation, please make sure all firmwares (GW firmware) are the latest version. Regarding the firmware update procedures, please refer to the device service manual.

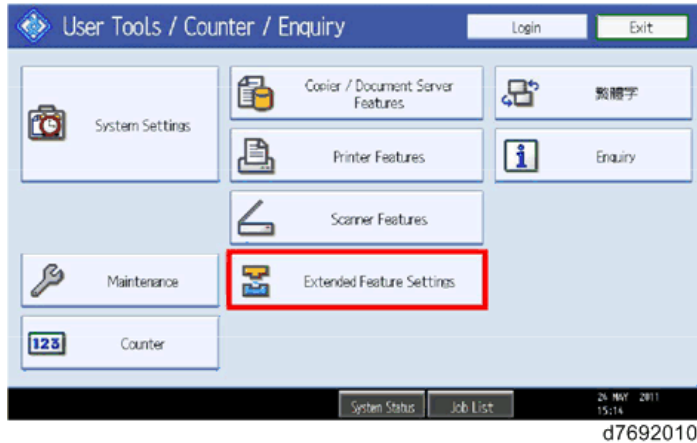
Reissued: 01-April-15

Model: RICOH Scan CX v1	Date: 30-Oct-13	No.: RD769001c
-------------------------	-----------------	----------------

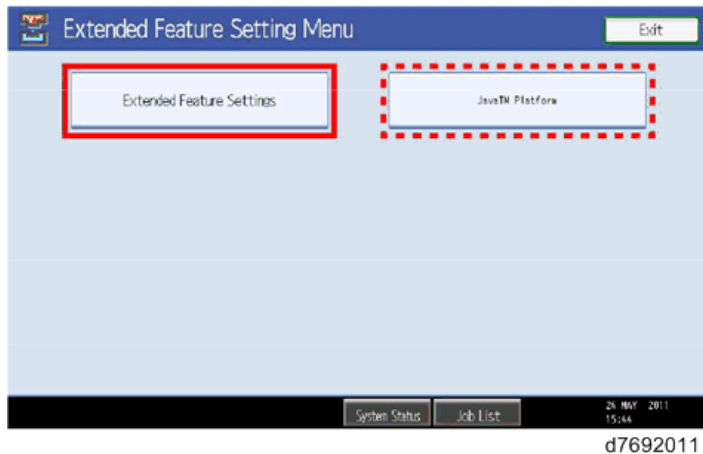
Installation and Initial Configuration

Activation Check

1. Turn on the device's main power.



2. Press the [User Tools/Counter] button, and then press [Extended Feature Settings].



3. Confirm that [JavaTM Platform] appears on the [Extended Feature Setting Menu] screen.

↓ Note

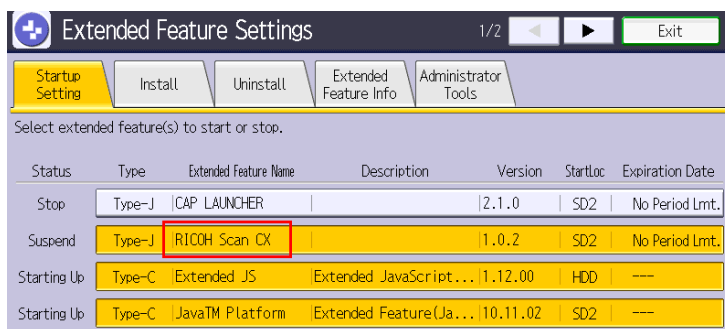
- If [JavaTM Platform] is not shown, the Java™ Platform has not been activated yet. Wait for a while until the [JavaTM Platform] appears.

4. Press [Extended Feature Settings].

Reissued: 01-April-15

Model: RICOH Scan CX v1	Date: 30-Oct-13	No.: RD769001c
-------------------------	-----------------	----------------

Installation and Initial Configuration



- 5. When viewing the [Startup Setting] tab, confirm that the application is “Starting Up”.**

Reissued: 01-April-15

Model: RICOH Scan CX v1

Date: 30-Oct-13

No.: RD769001c

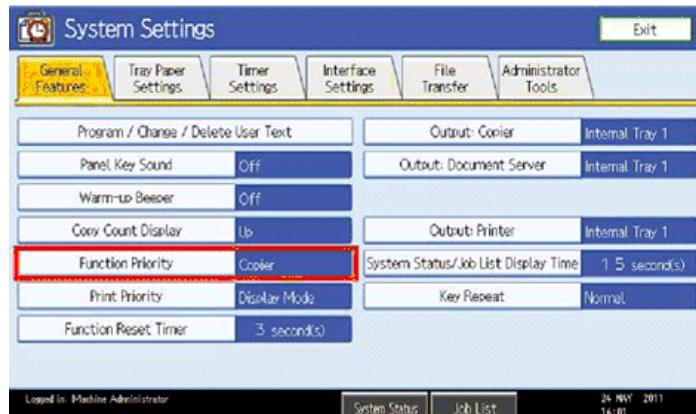
Installation and Initial Configuration

Function Priority Setting

Note

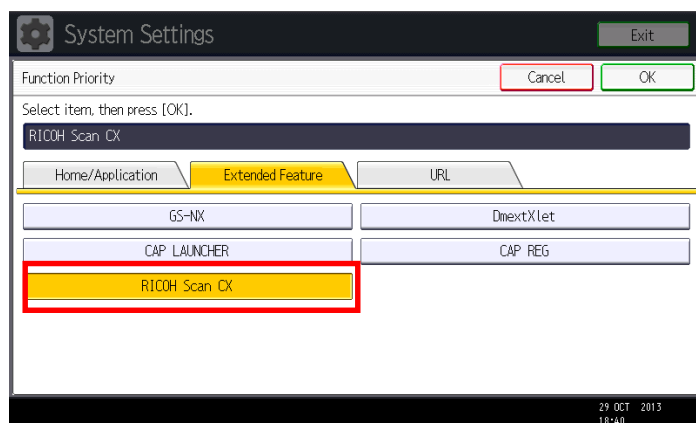
- This setting is optional. Please ask the customer if it is required.

1. Press the [User Tools/Counter] button, and then press [System Settings].



d7692013

2. Please select RICOH Scan CX.



Reissued: 01-April-15

Model: RICOH Scan CX v1

Date: 30-Oct-13

No.: RD769001c

Uninstallation

Uninstallation

Priority Feature Cancellation

1. Press the [User Tools/Counter] button, and then press [System Settings].
2. Select the [General Features] tab, and then press [Function Priority].
3. Select any function other than [Java TM/X] and then press [OK].

Reissued: 01-April-15

Model: RICOH Scan CX v1	Date: 30-Oct-13	No.: RD769001c
-------------------------	-----------------	----------------

Uninstallation

RICOH Scan CX v1 Uninstallation

Please see the Service Manual of Remote Install Manager.

Reissued: 01-April-15

Model: RICOH Scan CX v1

Date: 30-Oct-13

No.: RD769001c

Appendix

Appendix

VM Card Update

1. Access the RICOH Scan CX Embedded management tool to write down the settings.
2. Download Error Job using Job Management function from the maintenance of RICOH Scan CX Embedded management tool.
3. Uninstall RICOH Scan CX Embedded from the device **using Remote Install Manager**.
4. Update the Java VM **using Remote Install Manager**.
5. Install RICOH Scan CX Embedded **using Remote Install Manager**.
6. Set the setting values that were written down again.