

Model: Per-P5/MF5		Date: 11-Sep-17	No.: RM0AW001
Subject: Main Firmware for 1st Mass Production		Prepared by: T. Tachibana	
From: 2nd Tech Service Sect., MFP/P Tech Service Dept.			
Classification:	<input type="checkbox"/> Troubleshooting <input type="checkbox"/> Mechanical <input type="checkbox"/> Paper path <input type="checkbox"/> Product Safety	<input type="checkbox"/> Part information <input type="checkbox"/> Electrical <input type="checkbox"/> Transmit/receive <input checked="" type="checkbox"/> Other (Firmware)	<input type="checkbox"/> Action required <input type="checkbox"/> Service manual revision <input type="checkbox"/> Retrofit information <input type="checkbox"/> Tier 2

Regarding the main firmware, some machines have older firmware than the one for the first mass production listed on the web.

This is because we released the latest firmware for the first mass production on the web before launching the machines.

## Printer model:

For MAIN-GDI firmware

Version	Program No.	Effective Date
1.06	M0AR5655D	May 2017 production
1.05	M0AR5655C	1st Mass production

For MAIN-PDL firmware

Version	Program No.	Effective Date
1.06	M0AS5655D	May 2017 production
1.05	M0AS5655C	1st Mass production

For MAIN-GDI & MAIN-PDL firmware

Version	Modified Points or Symptom Corrected
1.06	Symptom corrected: The MIB value for the duplex counter is incorrect.
1.05	1st Mass production

Model: Per-P5/MF5

Date: 11-Sep-17

No.: RM0AW001

**MF model:**For MAIN-GDI firmware

Version	Program No.	Effective Date
1.07	M0AW5655D	May 2017 production
1.06	M0AW5655C	1st Mass production

For MAIN-PDL firmware

Version	Program No.	Effective Date
1.07	M0AX5655D	May 2017 production
1.06	M0AX5655C	1st Mass production

For MAIN-GDI & MAIN-PDL firmware

Version	Modified Points or Symptom Corrected
1.06	Symptom corrected: Machine may stall with a message [Cancelling Job..] after copying duplex manually from ADF.
1.05	1st Mass production

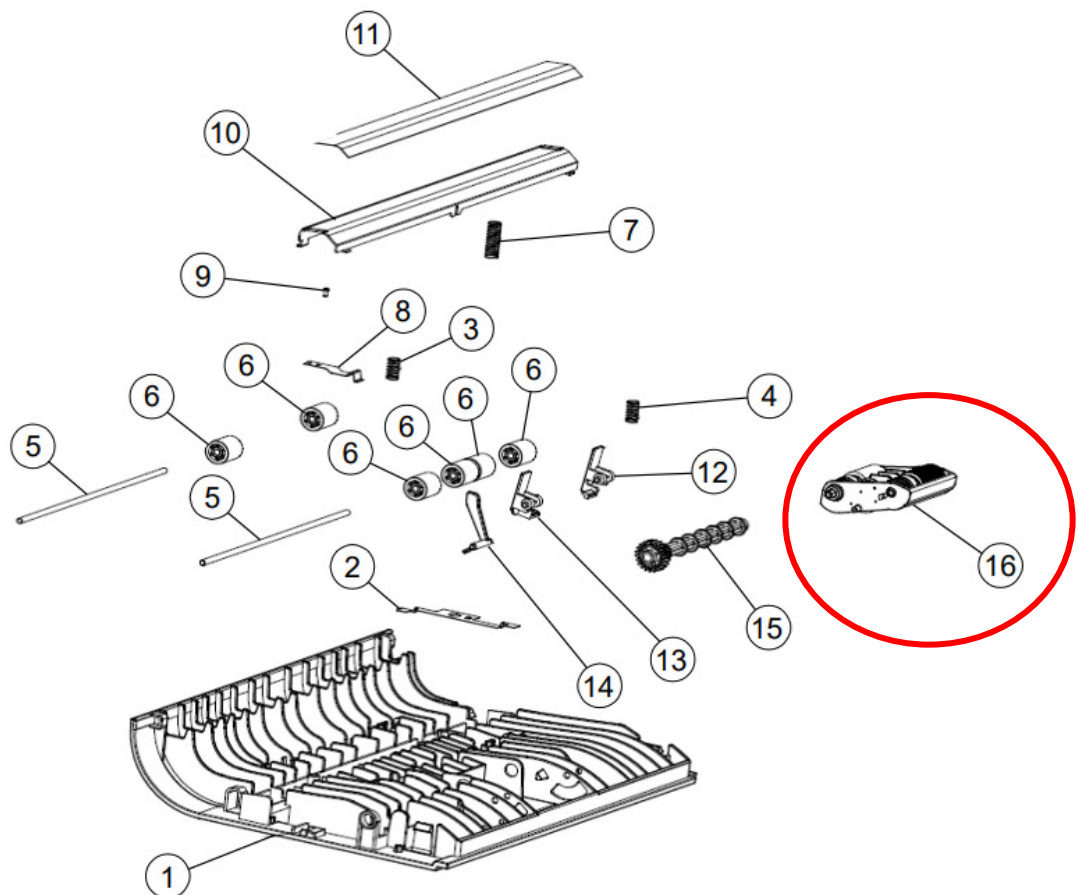
Model: PE-MF5		Date: 14-Sep-18	No.: RM0AW002
Subject: Parts Catalog Correction		Prepared by: Taiga Itoh	
From: 1st Tech. Support Sec. Service Support Dept.			
Classification:	<input type="checkbox"/> Troubleshooting <input type="checkbox"/> Mechanical <input type="checkbox"/> Paper path <input type="checkbox"/> Product Safety	<input checked="" type="checkbox"/> Part information <input type="checkbox"/> Electrical <input type="checkbox"/> Transmit/receive <input type="checkbox"/> Other (     )	<input type="checkbox"/> Action required <input type="checkbox"/> Service manual revision <input type="checkbox"/> Retrofit information <input type="checkbox"/> Tier 2

## Change/Reason: Part Catalog Correction

Incorrect part number	Correct part number	Description	Q'ty	Page	Index	Note
M0AX1758	<b>M0AX1710</b>	PAPER FEED UNIT:ASS'Y	1	6	16	

Please use the correct part number **M0AX1710**.

### 3. DADF-2



Model: PE-P5/MF5		Date: 23-Apr-19	No.: RM0AW003
Subject: Revised laser safety regulation		Prepared by:	
From: Tech Support Sect., Product Marketing Dept.			
Classification:	<input type="checkbox"/> Troubleshooting <input type="checkbox"/> Mechanical <input type="checkbox"/> Paper path <input checked="" type="checkbox"/> Product Safety	<input type="checkbox"/> Part information <input type="checkbox"/> Electrical <input type="checkbox"/> Transmit/receive <input type="checkbox"/> Other ()	<input type="checkbox"/> Action required <input checked="" type="checkbox"/> Service manual revision <input type="checkbox"/> Retrofit information <input type="checkbox"/> Tier 2

To meet revised laser safety regulation, please apply the following corrections to your field service manual.

Important Safety Notices → General Safety Instructions

**Addition:**

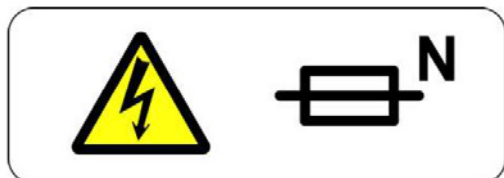
**For Norway**

This product is also designed for an IT power distribution system with phase-to-phase voltage 230V.

Important Safety Notices → General Safety Instructions → Safety Labels of the Machine

**Addition:**

**For the machines with the following symbol:**



** CAUTION**

**DOUBLE POLE/NEUTRAL FUSING**

Turn off the main power switch and disconnect the power cord before disassembling or assembling the parts of the machine.

Important Safety Notices → Safety → Prevention of Physical Injury

## **Correction:**

19. For machines installed with the anti-tip components:

### **Old Description:**

The anti-tip components are necessary for meeting the requirements of IEC60950-1, the international standard for safety. The aim of these components is to prevent the products, which are heavy in weight, from toppling as a result of people running into or leaning onto the products, which can lead to serious accidents such as persons becoming trapped under the product. (U.S.: UL60950-1, Europe: EN60950-1) Therefore, removal of such components must always be with the consent of the customer. Do not remove them at your own judgment.

### **New Description:**

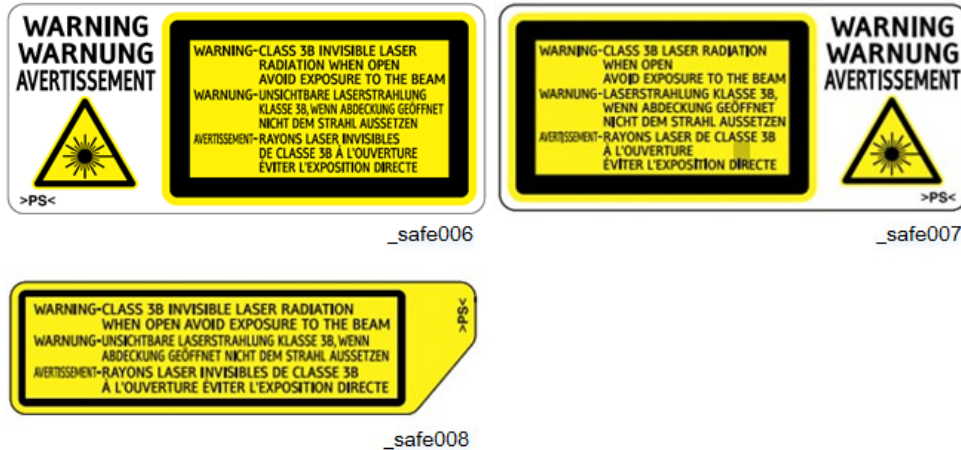
The anti-tip components are necessary to prevent the products, which are heavy in weight, from toppling a result of people running into or leaning onto the products, which can lead to serious accidents such persons becoming trapped under the products. Therefore, removal of such components must always be with the consent of the customer. Do not remove them at your own judgment.

## Important Safety Notices → Laser Safety

### WARNING FOR LASER UNIT

#### WARNING:

Turn off the main switch before attempting any of the procedures in the Laser Unit section. Laser beams can seriously damage your eyes.



#### Addition:



#### Addition:

