



Read this manual carefully before you use the product and keep it handy for future reference.
For safe and correct use, please be sure to read “Safety Information” before using the machine.
This manual briefly describes the procedure for installing this machine.
For more details about installation and other information, see *Hardware Guide* in the CD-ROM and *Software Guide* in the CD-ROM.

Read this manual carefully before you use the product and keep it handy for future reference.
For safe and correct use, please be sure to read “Safety Information” before using the machine.
This manual briefly describes the procedure for installing this machine.
For more details about installation and other information, see *Hardware Guide* in the CD-ROM and *Software Guide* in the CD-ROM.

Read this manual carefully before you use the product and keep it handy for future reference.
For safe and correct use, please be sure to read “Safety Information” before using the machine.
This manual briefly describes the procedure for installing this machine.
For more details about installation and other information, see *Hardware Guide* in the CD-ROM and *Software Guide* in the CD-ROM.

Read this manual carefully before you use the product and keep it handy for future reference.
For safe and correct use, please be sure to read “Safety Information” before using the machine.
This manual briefly describes the procedure for installing this machine.
For more details about installation and other information, see *Hardware Guide* in the CD-ROM and *Software Guide* in the CD-ROM.

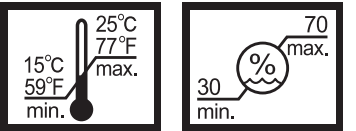
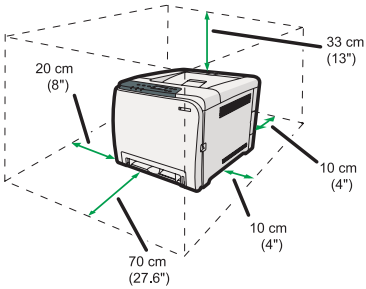
Read this manual carefully before you use the product and keep it handy for future reference.
For safe and correct use, please be sure to read “Safety Information” before using the machine.
This manual briefly describes the procedure for installing this machine.
For more details about installation and other information, see *Hardware Guide* in the CD-ROM and *Software Guide* in the CD-ROM.

Read this manual carefully before you use the product and keep it handy for future reference.
For safe and correct use, please be sure to read “Safety Information” before using the machine.
This manual briefly describes the procedure for installing this machine.
For more details about installation and other information, see *Hardware Guide* in the CD-ROM and *Software Guide* in the CD-ROM.

Read this manual carefully before you use the product and keep it handy for future reference.
For safe and correct use, please be sure to read “Safety Information” before using the machine.
This manual briefly describes the procedure for installing this machine.
For more details about installation and other information, see *Hardware Guide* in the CD-ROM and *Software Guide* in the CD-ROM.

1 Place to Install

Place to Install
Place to Install
Place to Install
Place to Install
Place to Install



❖ Power Source

- 220-240 V, 6 A, 50/60 Hz
- 120 V, 11 A, 60 Hz

Please be sure to connect the power cord to a power source as above.

❖ Power Source

- 220-240 V, 6 A, 50/60 Hz
- 120 V, 11 A, 60 Hz

Please be sure to connect the power cord to a power source as above.

❖ Power Source

- 220-240 V, 6 A, 50/60 Hz
- 120 V, 11 A, 60 Hz

Please be sure to connect the power cord to a power source as above.

❖ Power Source

- 220-240 V, 6 A, 50/60 Hz
- 120 V, 11 A, 60 Hz

Please be sure to connect the power cord to a power source as above.

❖ Power Source

- 220-240 V, 6 A, 50/60 Hz
- 120 V, 11 A, 50/60 Hz

Please be sure to connect the power cord to a power source as above.

❖ Power Source

- 220-240 V, 6 A, 50/60 Hz
- 120 V, 11 A, 60 Hz

Please be sure to connect the power cord to a power source as above.

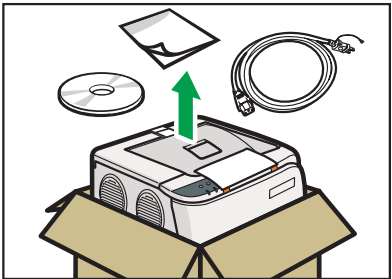
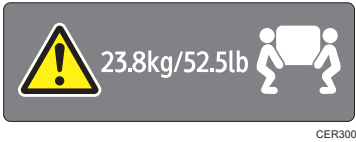
❖ Power Source

- 220-240 V, 6 A, 50/60 Hz
- 120 V, 11 A, 60 Hz

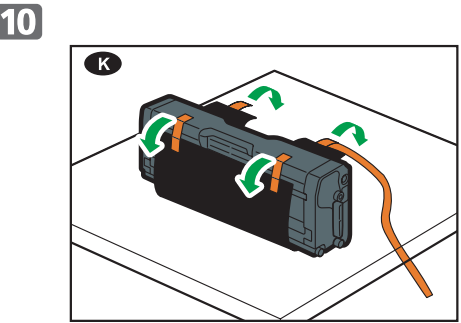
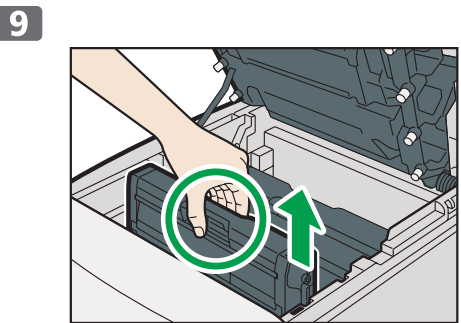
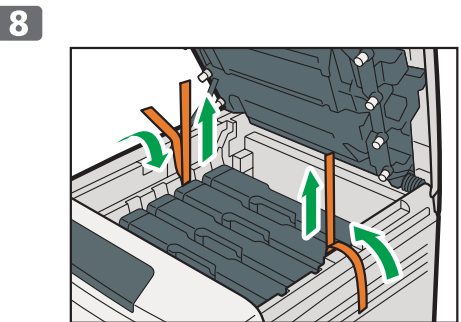
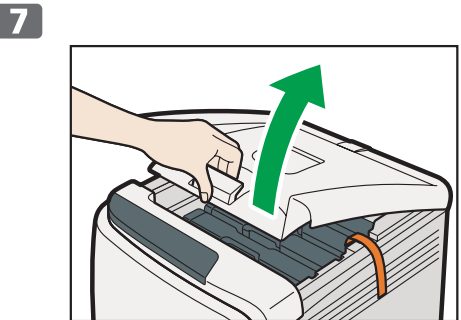
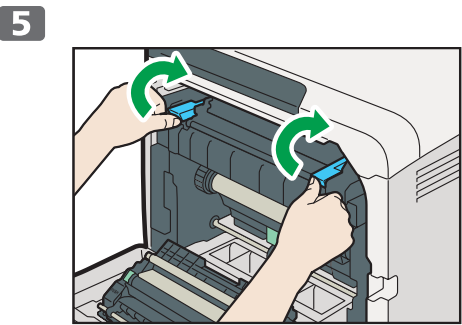
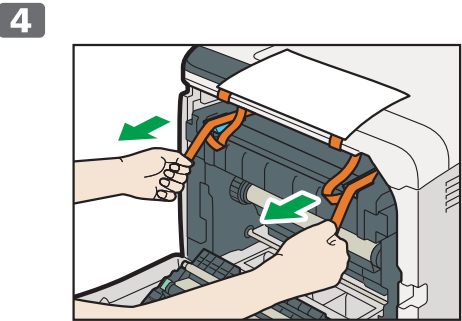
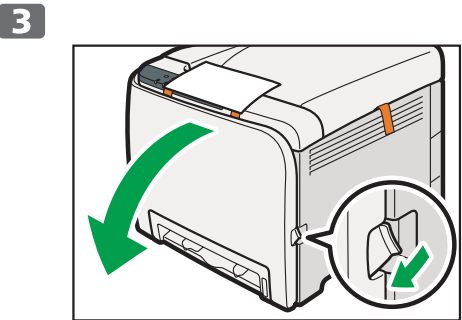
Please be sure to connect the power cord to a power source as above.

2 Unpacking

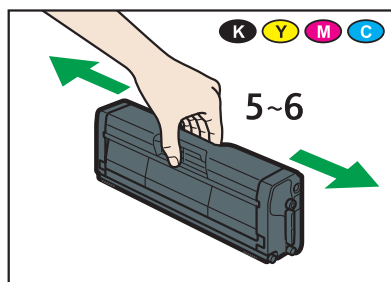
Unpacking
Unpacking
Unpacking
Unpacking
Unpacking



2 Remove the adhesive tape.
Remove the adhesive tape.
Remove the adhesive tape.
Remove the adhesive tape.
Remove the adhesive tape.

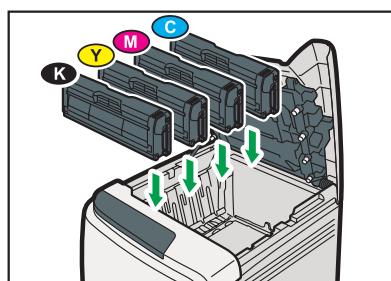


11



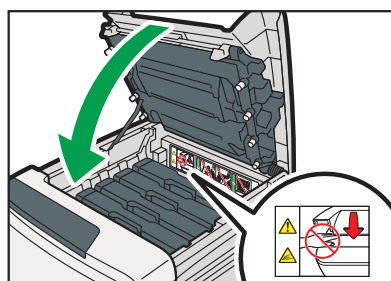
CER101

12



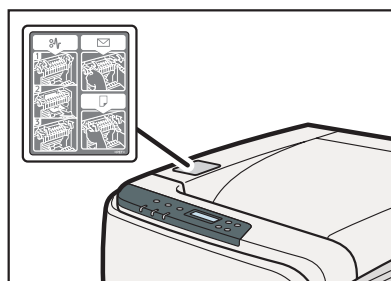
CER302

13



CER303

14



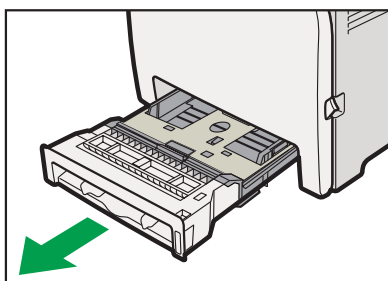
CER243

3

Loading Paper

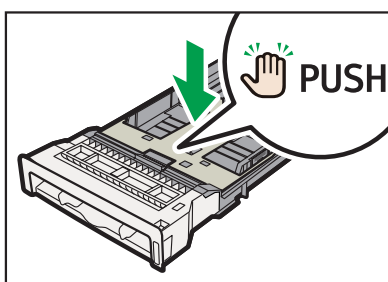
Loading Paper
Loading Paper
Loading Paper
Loading Paper
Loading Paper
Loading Paper

1



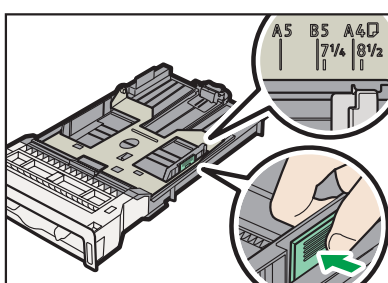
CER303

2



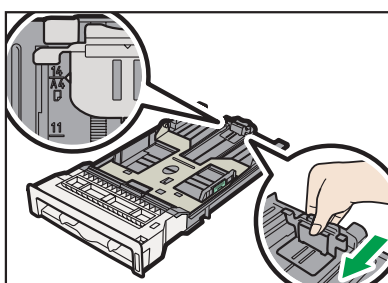
CER301

3



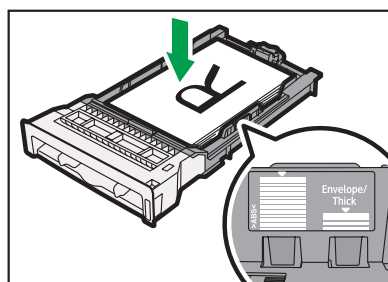
CES305

4



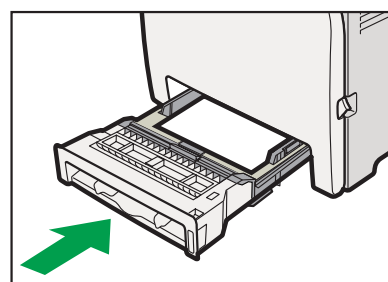
CES306

5



CER303

6



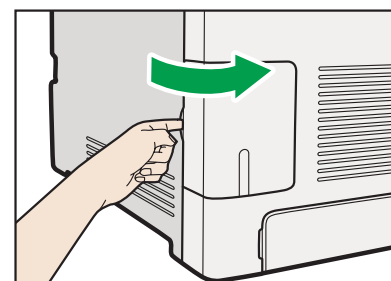
CER305

4

Connection

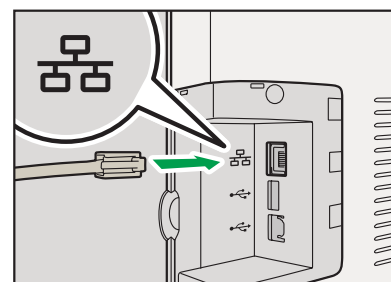
Connection
Connection
Connection
Connection
Connection

- For details about connection settings, see *Hardware Guide*.
- For details about connection settings, see *Hardware Guide*.
- For details about connection settings, see *Hardware Guide*.
- For details about connection settings, see *Hardware Guide*.
- For details about connection settings, see *Hardware Guide*.
- For details about connection settings, see *Hardware Guide*.
- For details about connection settings, see *Hardware Guide*.

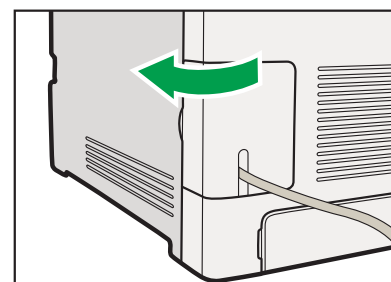


CER090

LAN

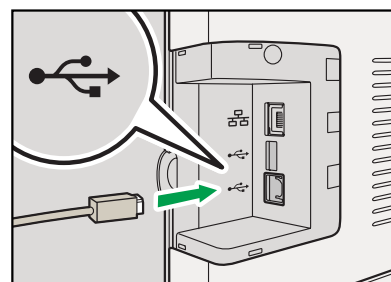


CER048

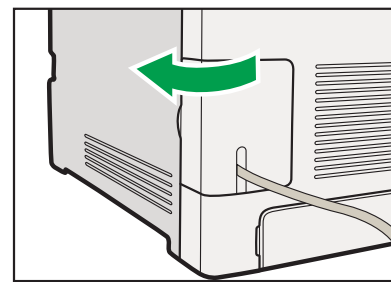


CER081

USB



CER049



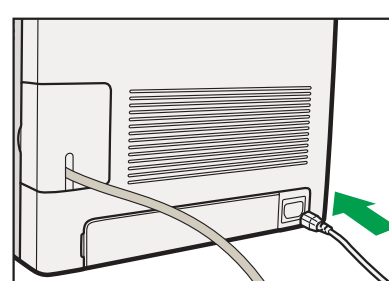
CER091

5

Turning the Power On

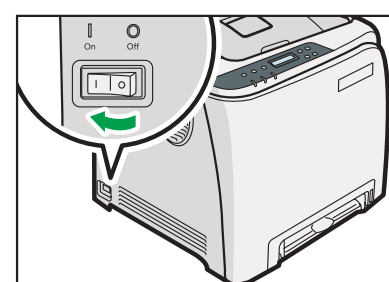
Turning the Power On
Turning the Power On
Turning the Power On
Turning the Power On
Turning the Power On

1



CER304

2



CER066

6

Installing the Printer Driver

Installing the Printer Driver
Installing the Printer Driver
Installing the Printer Driver
Installing the Printer Driver
Installing the Printer Driver
Installing the Printer Driver

- For details about connection and installation of the printer driver when using network connection, see *Driver Installation Guide* or *PostScript 3 Installation Guide*.
- For details about connection and installation of the printer driver when using network connection, see *Driver Installation Guide* or *PostScript 3 Installation Guide*.
- For details about connection and installation of the printer driver when using network connection, see *Driver Installation Guide* or *PostScript 3 Installation Guide*.
- For details about connection and installation of the printer driver when using network connection, see *Driver Installation Guide* or *PostScript 3 Installation Guide*.
- For details about connection and installation of the printer driver when using network connection, see *Driver Installation Guide* or *PostScript 3 Installation Guide*.
- For details about connection and installation of the printer driver when using network connection, see *Driver Installation Guide* or *PostScript 3 Installation Guide*.

© 2011
EN GB EN US
DE DE FR FR
IT IT ES ES
NL NL PT PT

M096-8601