

Model: Li-MF1		Date: 24-Oct-11	No.: RM126001
Subject: Machine behavior at toner end		Prepared by: Y. Gaman	
From: 3rd Tech Service Sect., MFP/P Tech Service Dept.			
Classification:	<input checked="" type="checkbox"/> Troubleshooting <input type="checkbox"/> Mechanical <input type="checkbox"/> Paper path <input type="checkbox"/> Product Safety	<input type="checkbox"/> Part information <input type="checkbox"/> Electrical <input type="checkbox"/> Transmit/receive <input type="checkbox"/> Other (     )	<input type="checkbox"/> Action required <input checked="" type="checkbox"/> Service manual revision <input type="checkbox"/> Retrofit information <input checked="" type="checkbox"/> Tier 2

## SYMPTOM

The print image continues to be printed out and becomes lighter and lighter after the toner near end alert message, "Cartridge Low", is shown.

## CAUSE

Design specification.

### Details:

This model only has a toner near end alert that displays "Cartridge Low". It does not have a toner end alert. In addition, it continues to print out received faxes after toner end.

Supply Items	Machine Behavior at the end	Alert	
		Near End	End
Toner Cartridge	Continues to print	"Cartridge Low" is shown.	N/A

## SOLUTION

Replace the toner cartridge before the print image becomes too light, especially when receiving faxes.

Model: Li-MF1		Date: 5-Mar-12	No.: RM126002
Subject: @Remote Remarks		Prepared by: T. Takahashi	
From: 1st Tech Service Sect., MFP/P Tech Service Dept.			
Classification:	<input type="checkbox"/> Troubleshooting <input type="checkbox"/> Mechanical <input type="checkbox"/> Paper path <input type="checkbox"/> Product Safety	<input type="checkbox"/> Part information <input type="checkbox"/> Electrical <input type="checkbox"/> Transmit/receive <input type="checkbox"/> Other (     )	<input type="checkbox"/> Action required <input type="checkbox"/> Service manual revision <input type="checkbox"/> Retrofit information <input checked="" type="checkbox"/> Tier 2

## How to Display the Ricoh Device Serial Number on the Counter CSV and Device List

- This RTB explains how to ensure that the Ricoh **device serial number** (S/N) is displayed on both the **Device List** (from late March 2012) and **Counter CSV**.
- In most cases, if an OEM product like the Li-MF1 is managed as an SNMP device, its MAC address (and not device S/N) appears on the Counter CSV and Device List.

### Counter CSV:

A	B	C	D	E	F	G	H	I	J	K	L	M	N	O
Customer	Appliance	Appliance	Vendor	Model Name	Device Serial Number	Tag	Device	Device Type	Counter Type	Acquisition Date	Acquisition Time	Total	B&W Total	
Black	J777020	172.30	Ricoh	MP 161 L	MAC000074ad92d2		172.30.5.4	SNMP	Auto Discd	12/18/2011	12:00	464238	46423	
Black	J777020	172.30	Ricoh	MP 161 L	MAC000074ad92d2		172.30.5.4	SNMP	Auto Discd	12/18/2011	12:00	24184		

### Device List:

Device S/N	Model Name	Customer	Installed	Device C	Device M/R	Appli	Servi	IP Ad
MAC001599490f0e	RFG Network Printer	A5_MA	Managed	Register	SNMP	1	J7790 Ricoh	172.17

- See the following pages for additional explanation.

## Procedure

### Li-MF1:

Register the device using **remote registration** (as a monitored device). This is because Auto Discovery will send the RICOH device S/N information to the @Remote Center.

### Other OEM products:

Enter the MIB OID in the "Serial Number Setting" for RC Gate.

### Note:

- If you register the device on-site as an SNMP device (using the Device Registration Wizard), the RICOH device S/N will not be sent to the @Remote Center. In this case, the MAC address will be used.
- On the **Counter CSV**, the RICOH device S/N will appear in the "Device Serial Number" column. On the **Device List**, it will appear in the new "MIB S/N" column from the end of March 2012.

Model: Li-MF1

Date: 5-Mar-12

No.: RM126002

## Supplementary

- As shown above, in the case of the Li-MF1, you do not need to enter the MIB OID in the "Serial Number Setting". However, this is necessary on other OEM products in order to display the device S/N on the Device List.
- The Li-MF1 has both a Ricoh device S/N and a Lexmark S/N. The Ricoh device S/N is used for @Remote and appears on the serial number plate. The Lexmark S/N appears on the LCD and Web GUI.
- On the **Device List**, the device S/N will appear in the new "**MIB S/N**" column, which will be added from the end of March 2012.

Up to end of March 2012 (Ex. Samsung BP20N, with MP161L controller):

Q	Device S/N	Model Name	Installed	Device Co	Device	M/R	Applic	Servi
3	MAC000074ad92ce	MP 161L	E Managed	Registered	SNMP	25	J77702	Ricoh
1	MAC000074ad92d2	MP 161L	E Managed	Registered	SNMP	25	J77702	Ricoh
5	MAC001599064a4f	Aficio BP20N	A Managed	Registered	SNMP	25	J77703	Ricoh

From end of March 2012:

Address	First AD Date	Last Report Date	MIB S/N
2.18.25.52	04/25/2009	05/12/2009 07:00	
2.18.25.55	03/14/2009	03/17/2009 06:00	CNFY106105
2.18.25.57		04/10/2009 07:00	
2.18.25.69	04/21/2009	06/03/2009 07:00	JPSNB24296

- On the **Counter CSV**, the device S/N will appear in the "Device S/N" column.

A	B	C	D	E	F	G	H	I	J	K	L	M	N	AG	AH
Custom	Appl	Appl	Vendor	Model Name	Device Serial Nu	Tag	Device	Device	Counter Ty	Acquisition D	Acquisition	Total		Device MAC Address	Set
A5_MAI	J7791	172.17	Ricoh	RFG Network Printer	S2108820108F		172.17	SNMP	Auto Discd	12/07/2011	12:00	51621		MAC001599490f0e	RE

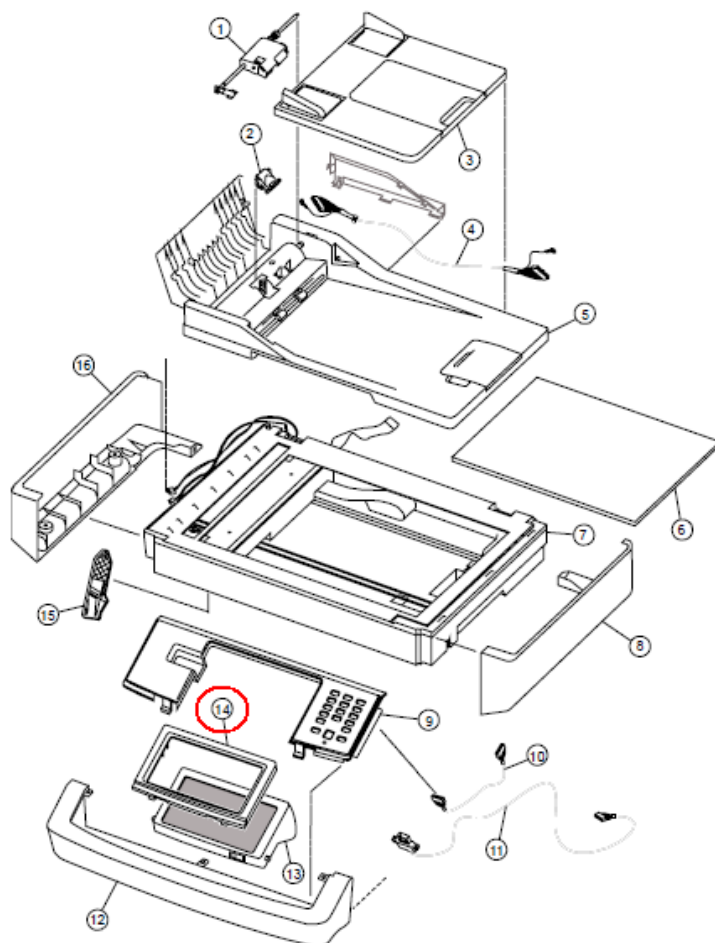
Model: Li-MF1b (GSA) North America		Date: 1-Aug-12	No.: RM126003
Subject: Unique part to GSA model		Prepared by: Y. Gaman	
From: 3rd Tech Service Sect., MFP/P Tech Service Dept.			
Classification:	<input type="checkbox"/> Troubleshooting <input type="checkbox"/> Mechanical <input type="checkbox"/> Paper path <input type="checkbox"/> Product Safety	<input checked="" type="checkbox"/> Part information <input type="checkbox"/> Electrical <input type="checkbox"/> Transmit/receive <input type="checkbox"/> Other (     )	<input type="checkbox"/> Action required <input checked="" type="checkbox"/> Service manual revision <input type="checkbox"/> Retrofit information <input checked="" type="checkbox"/> Tier 2

New part number	Description	Q'ty	Int	Page	Index	Note
VR420114	OP Panel Display Bezel 4410SFg: 40X7548	1	-	5	14	

**Change:** This part was added as a service part unique to the GSA-model (M127-35).

**Reason:** The M127-35 was added as a new version of the Li-MF1b, which is to be sold in the NA market.

## 2.Imaging (M126/M127/M128)



**Reissued: 30-Nov-15**

Model: Li-MF1	Date: 11-Jan-13	No.: RM126004c
---------------	-----------------	----------------

**RTB Reissue**

The items in ***bold italics*** have been corrected or added.

Subject: Firmware Release Note: Printer		Prepared by: Y. Gaman	
From: 1st Tech Service Sect., MFP/Printer Tech Service Dept.			
Classification:	<input type="checkbox"/> Troubleshooting <input type="checkbox"/> Mechanical <input type="checkbox"/> Paper path <input type="checkbox"/> Product Safety	<input type="checkbox"/> Part information <input type="checkbox"/> Electrical <input type="checkbox"/> Transmit/receive <input checked="" type="checkbox"/> Other (Firmware)	<input type="checkbox"/> Action required <input type="checkbox"/> Service manual revision <input type="checkbox"/> Retrofit information <input checked="" type="checkbox"/> Tier 2

This RTB has been issued to announce the firmware release information for the **Printer**.

Version	Program No.	Effective Date	Availability of RFU
<b><i>LR.BS.P698</i></b>	<b><i>LRBSP698</i></b>	<b><i>Apr 2015</i></b>	<b><i>Not Available</i></b>
LR.BS.P692	LRBSP692	Mar 2015	Not Available
VLR.BS.P689-0	LRBSP689	May 2014	Not Available
LR.BS.P631-0	LRBSP631	December 2012	Not Available

**Note: Definition of Availability of RFU via @Remote**
**"Available":** The firmware can be updated via RFU or SD card.

**"Not available":** The firmware can only be updated via SD card.

Version	Modified Points or Symptom Corrected
<b><i>LR.BS.P698</i></b>	<b><i>Symptom corrected:</i></b> <b><i>GHOST (Glibc Gethostbyname Buffer Overflow) vulnerability</i></b>
LR.BS.P692	Secure enhanced.
VLR.BS.P689-0	Symptom corrected: Cannot scan to shared folders in Windows 8.
LR.BS.P631-0	Symptom corrected: Addressed an issue that could lead to a 900.00 Firmware Error.