

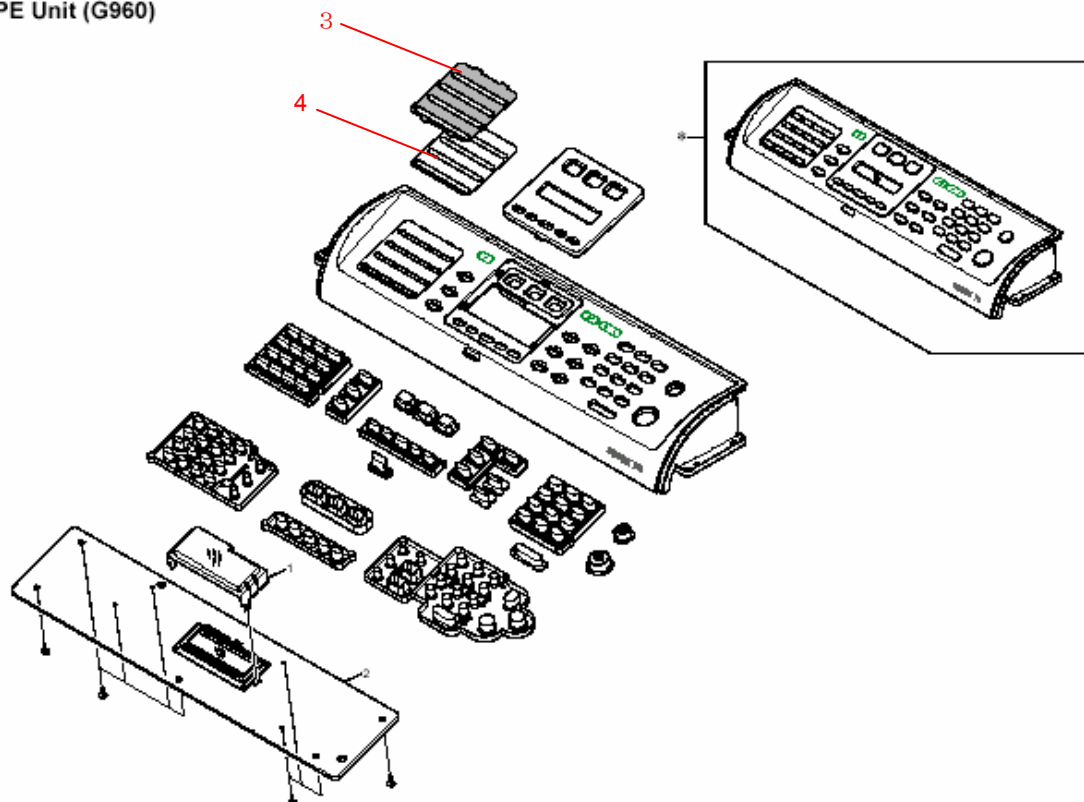
Model: Model CM-C2		Date: 14-Feb-08	No.: MG960001
Modified Article: SHEET/LABEL-ONETOUCH		Prepared by: T. Shintani	
From: 1st Tech. Support Sec. Service Support Dept.			
Reason for Modification:	<input checked="" type="checkbox"/> Parts catalog correction <input type="checkbox"/> Vendor change <input type="checkbox"/> Other <input type="checkbox"/> To facilitate assembly <input type="checkbox"/> To improve reliability <input type="checkbox"/> To meet standards <input type="checkbox"/> Part standardization <input type="checkbox"/> Product Safety    (    )		

**Change:** These parts were added.

**Reason:** Requests from the field.

NEW Part	Description	Q'ty	Int	Page	Index	Note
G9601292	SHEET-ONETOUCH	1	-	29	3	
G9601345	LABEL-ONETOUCH	1	-	29	4	

14.OPE Unit (G960)



Model: Model CM-C2		Date: 29-May-08	No.: MG960002
Modified Article: PHOTOINTERRUPTER		Prepared by: T. Shintani	
From: 1st Tech. Support Sec. Service Support Dept.			
Reason for Modification:	<input checked="" type="checkbox"/> Parts catalog correction <input type="checkbox"/> Vendor change <input type="checkbox"/> Other <input type="checkbox"/> To facilitate assembly <input type="checkbox"/> To improve reliability <input type="checkbox"/> To meet standards <input type="checkbox"/> Part standardization <input type="checkbox"/> Product Safety    (      )		

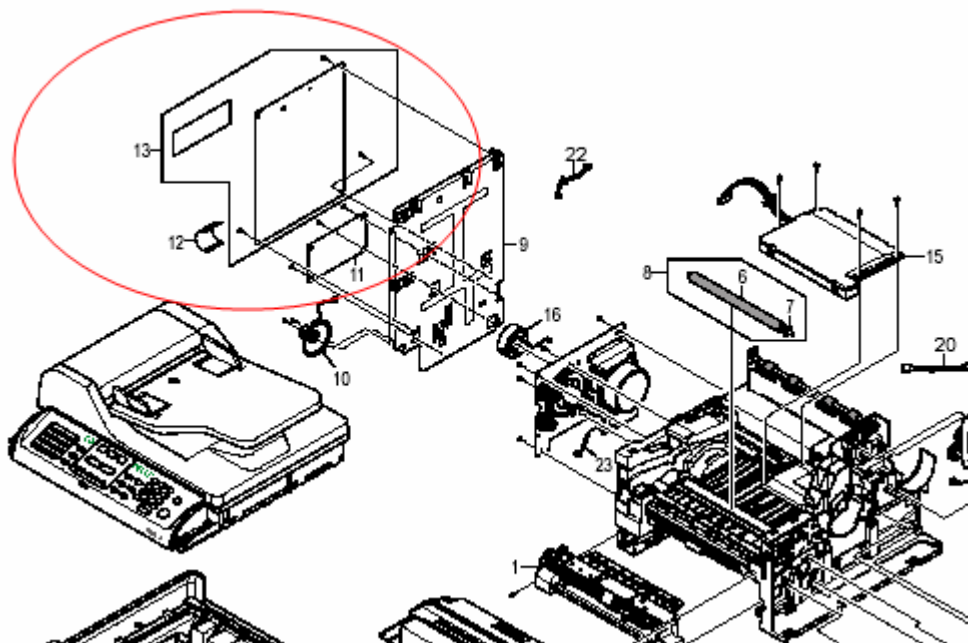
OLD Part	NEW Part	Description	Q'ty	Int	Page	Index	Note
G9601001	<b>G1861102</b>	PHOTOINTERRUPTER	1	-	23	15	

\*This change applies only to the part number modification. This was done for parts number management.

Model: Model CM-C2		Date: 07-Nov-08	No.: MG960003
Modified Article: Main Board		Prepared by: Y.Yoshida	
From: 1st Tech. Support Sec. Service Support Dept.			
Reason for Modification:	<input checked="" type="checkbox"/> Parts catalog correction <input type="checkbox"/> Vendor change <input type="checkbox"/> Other <input type="checkbox"/> To facilitate assembly <input type="checkbox"/> To improve reliability <input type="checkbox"/> To meet standards <input type="checkbox"/> Part standardization <input type="checkbox"/> Product Safety    (    )		

Incorrect Part number	Correct Part number	Description	Q'ty	Int	Page	Index	Note
G9601375	G9601454	Main Board	1	-	3	13	

Change/ Reason: Parts catalog correction



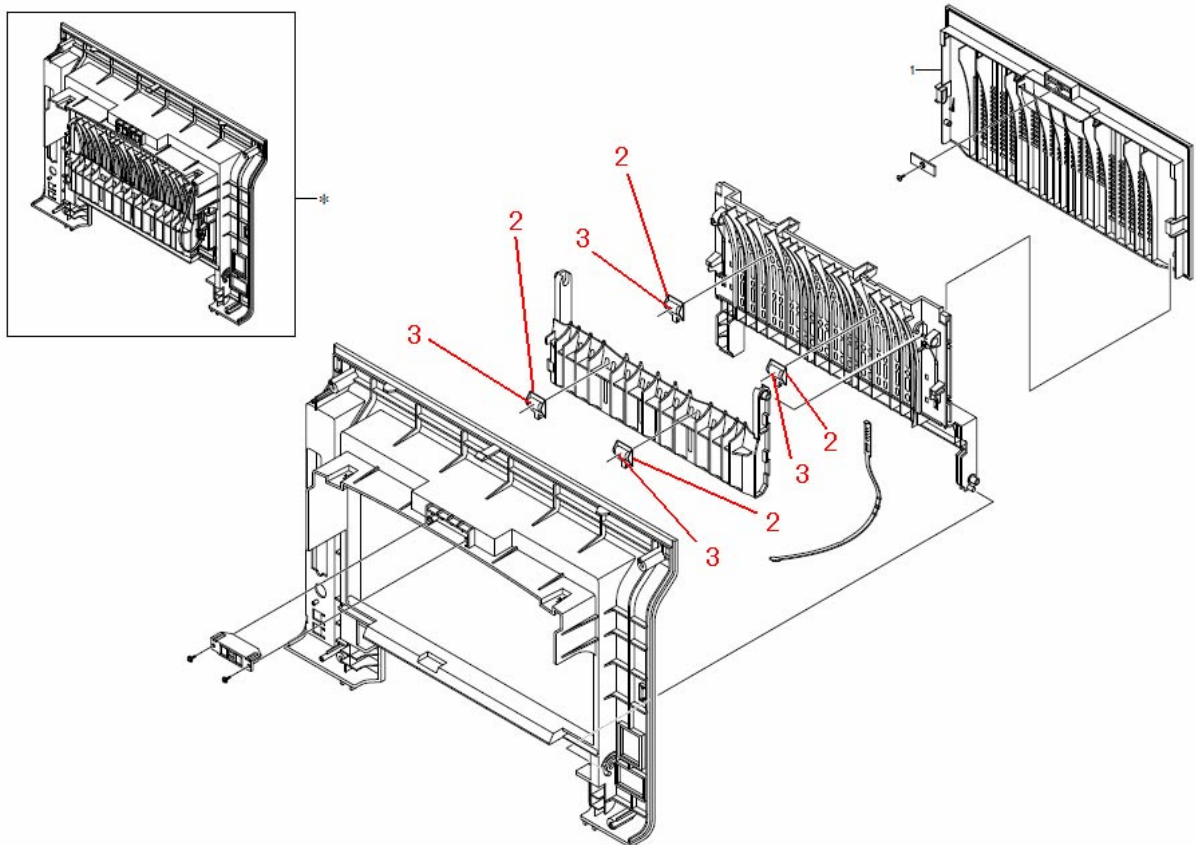
Model: Model CM-C2		Date: 18-Nov-08	No.: MG960004
Modified Article: Rear Cover ASS'Y		Prepared by: Y.Gaman	
From: 1st Tech. Support Sec. Service Support Dept.			
Reason for Modification:	<input checked="" type="checkbox"/> Parts catalog correction <input type="checkbox"/> Vendor change <input type="checkbox"/> Other <input type="checkbox"/> To facilitate assembly <input type="checkbox"/> To improve reliability <input type="checkbox"/> To meet standards <input type="checkbox"/> Part standardization <input type="checkbox"/> Product Safety    (    )		

**Change:** These parts were added.

**Reason:** Requests from the field.

NEW Part	Description	Q'ty	Int	Page	Index	Note
G1861222	Idle Roller Holder	4	-	11	2	
G1861223	Idle Roller	4	-	11	3	

## 5.Rear Cover Ass'y (G960)



Model: Model CM-C2		Date: 16-Feb-09	No.: MG960005
Modified Article: Fusing Unit		Prepared by: Y. Gaman	
From: 1st Tech. Support Sec. Service Support Dept.			
Reason for Modification:	<input checked="" type="checkbox"/> Parts catalog correction <input type="checkbox"/> Vendor change <input type="checkbox"/> Other <input type="checkbox"/> To facilitate assembly <input type="checkbox"/> To improve reliability <input type="checkbox"/> To meet standards <input type="checkbox"/> Part standardization <input type="checkbox"/> Product Safety    (    )		

Old part number	New part number	Description	Q'ty	Int	Page	Index	Note
G9601169	G9601600	Fusing Unit – 110V	1	X/O	33	*	
G9601503	G9601602	Fusing Unit – 220V	1	X/O	33	*	
G9601170	-	Hot Roller Ass'y - 110V	1→0	X/X	33	17	
G9601504	-	ELA Unit-Heat 220V	1→0	X/X	33	17	
G9601344	-	Cap	1→0	X/X	33	18	
-	G9601601	Heater 110V	1	X/X	33	30	
-	G9601603	Heater 220V	1	X/X	33	30	

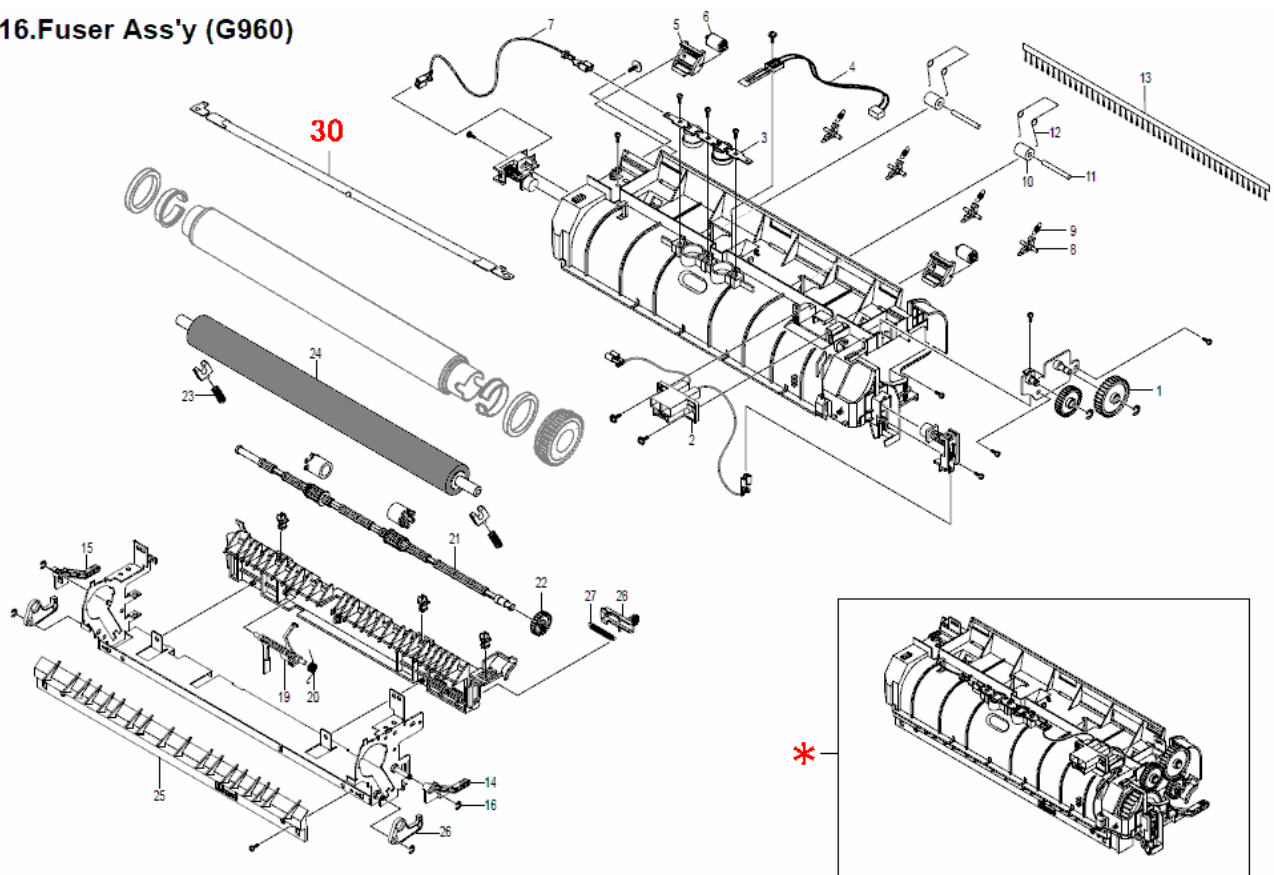
**Change:** The fusing lamp was changed from an E-coil type to a Halogen Lamp.

**Reason:** To further minimize fusing temperature variations (minimizing “Low Heat” errors).

### Important:

When you install the new parts, make sure to upgrade to **System Firmware 1.06.01.00** or newer.

### 16.Fuser Ass'y (G960)





Part Change Information List

Date: April 30, 2009

Model	Code	PCIL Number	PCIL Correction	Old part number	New part number	Description	Old Q'ty	New Q'ty	Int	3DPC	Page	Index	Set	Set Int	RTB	Note	Ref Number
Model CM-C2	G960	200904		G9601422		RZL:ELAUNIT-ROLLDUP	1	0			35	6			Y		V0900803
Model CM-C2	G960	200904		G9601423		RZL:ELAUNITROLLDUP2	1	0			35	3			Y		V0900803
Model CM-C2	G960	200904			M3071032	DUPLEX FEED ROLLER	0	1			35	15			Y		V0900803
Model CM-C2	G960	200904			M3071033	C-RING	0	2			35	16			Y		V0900803



Part Change Information List

Date: July 31, 2009

Model	Code	PCIL Nr.	PCIL Correction	Old part number	New part number	Description	Old Q'ty	New Q'ty	Int	3DPC	Page	Index	Set	Set Int	RTB	Note	Ref. Nr.
CM-C2	G960	200907			G9601604	DUPLEX FEED ROLLER	0	1			34	17			Y		V0900803



Part Change Information List

Date: December 29, 2009

Model	Code	PCIL Nr.	PCIL Correction	Old part number	New part number	Description	Old Q'ty	New Q'ty	Int	3DPC	Page	Index	Set	Set Int	RTB	Note	Ref. Nr.	ECN Nr.
CM-C2	G960	200912			G9601258	FRAME-M_EXIT:JC61-01621A	0	1			13	66			Y		V0902672	





Part Change Information List

Date: September 30, 2010

Model	Code	PCIL Nr.	PCIL Correction	Old part number	New part number	Description	Old Q'ty	New Q'ty	Int	3DPC	Page	Index	Set	Set Int	RTB	Note	Ref. Nr.	ECN Nr.
CM-C2	G960	201009		G9601190	G9601606	Pick-up Roller	1	1	O/O		13	7					V1000901	10050027
CM-C2	G960	201009		G9601161	G9601508	Terminal Board	1	1	X/O		13	39					V1001528	10070056



Part Change Information List

Date: March 31, 2011

Model	Code	PCIL Nr.	PCIL Correcti on	Old part number	New part number	Description	Old Q'ty	New Q'ty	Int	3DPC	Page	Index	Set	Set Int	RTB	Note	Ref. Nr.	ECN Nr.
CM-C2	G960	201103			G9601084	TRAY HOLDER					9	4			RG960007	Mis-indexed in the exploded image on page 8.		
CM-C2	G960	201103			G9601083	SUB TRAY					9	8			RG960007	Mis-indexed in the exploded image on page 8.		



## Part Change Information List

Date: June 30, 2011

Model	Code	PCIL Nr.	PCIL Correction	Old part number	New part number	Description	Old Q'ty	New Q'ty	Int	3DPC	Page	Index	Set	Set Int	RTB	Note	Ref. Nr.	ECN Nr.
CM-C2	G960	201105		G9601177		FRICTION PAD ASSY:JC9701931A	1	0	X/O		31	4					V1100774	11031375
CM-C2	G960	201105			M0001043	RZL:HOUSINGHOLDERP:JC61-01978A	0	1			31	16			RG960008		V1100774	11031375

**RICOH****Part Change Information List**

Date: July 28, 2011

Model	Code	PCIL Nr.	PCIL Correction	Old part number	New part number	Description	Old Q'ty	New Q'ty	Int	3DPC	Page	Index	Set	Set Int	RTB	Note	Ref. Nr.	ECN Nr.
CM-C2	G960	201107			G9601609	RZL:MEA-HOLDERPAD:JC97-03082A	0	1			31	15			RG960008		V1100774	11031375