



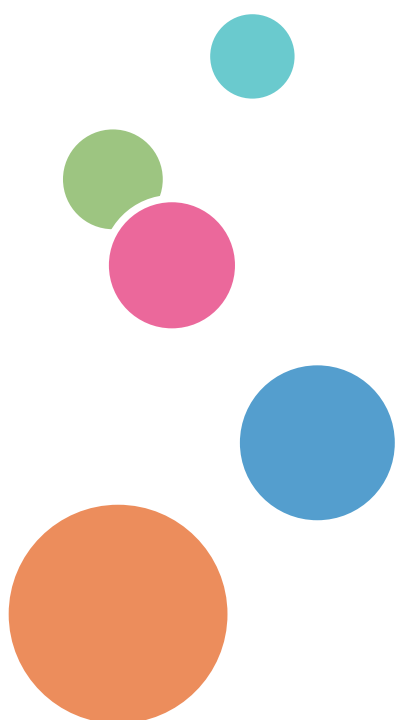
# Wi-Fi Direct Guide

Easy Setup Using Wi-Fi Direct

1

Troubleshooting

2





# Contents

How to Read the Manuals .....	2
Symbols Used in the Manuals .....	2
Disclaimer .....	2
<b>1. Easy Setup Using Wi-Fi Direct</b> .....	
Checking the SSID .....	3
When using the multi-function printer .....	3
When using the single-function printer .....	3
Connecting Using Windows .....	3
Connecting Using OS X .....	5
Connecting Using Android device .....	6
Connecting Using iOS device .....	7
<b>2. Troubleshooting</b> .....	
Connection Problems .....	9
Connection has Succeeded but the Wireless LAN Cannot be Used .....	9
How to Change the Encryption Key of Wi-Fi Direct .....	10
If You are Using Multi-function Printer .....	10
If You are Using Single-function Printer .....	14
Trademark .....	16

# How to Read the Manuals

---

## Symbols Used in the Manuals

---

This manual uses the following symbols:



Indicates points to pay attention to when using the machine, and explanations of likely causes of paper misfeeds, damage to originals, or loss of data. Be sure to read these explanations.



Indicates supplementary explanations of the machine's functions, and instructions on resolving user errors.

[ ]

Indicates the names of keys on the machine's display or control panels.

---

## Disclaimer

---

To the maximum extent permitted by applicable laws, in no event will the manufacturer be liable for any damages whatsoever arising out of failures of this machine, losses of the registered data, or the use or non-use of this product and operation manuals provided with it.

Make sure that you always copy or have backups of the data registered in this machine. Documents or data might be erased due to your operational errors or malfunctions of the machine.

In no event will the manufacturer be responsible for any documents created by you using this machine or any results from the data executed by you.

Some illustrations in this manual might be slightly different from the machine.

# 1. Easy Setup Using Wi-Fi Direct

## Checking the SSID

### ★ Important

- Before doing the following procedure, install the printer driver. For details, see Setup Guide.
- Make sure the Ethernet cable is not connected to the machine.

## When using the multi-function printer

### 1. Print the configuration page.

For details about printing the configuration page, see User's Guide.

### 2. Write down the SSID shown under "Wireless Direct Settings" on the configuration page.

## When using the single-function printer

### 1. Install and start the Smart Organizing Monitor.

For details about the procedure of Windows, see Setup Guide. For details about the procedure of OS X, see User's Guide.

### 2. Write down the Wi-Fi Direct SSID shown on the [Network 1] tab.

For details about [Network 1] tab, see User's Guide.

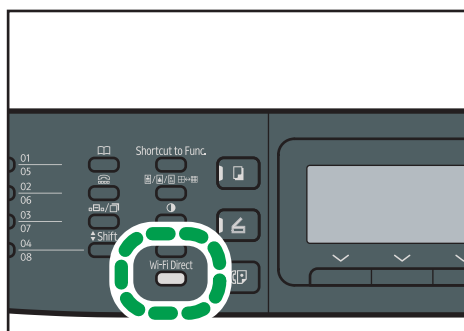
## Connecting Using Windows

### ★ Important

- Before doing the following procedure, enable the Wi-Fi Direct function on your computer. For details about enabling the Wi-Fi Direct function, see the computer manual.
- In Steps 1 to 2, configure each setting within two minutes.

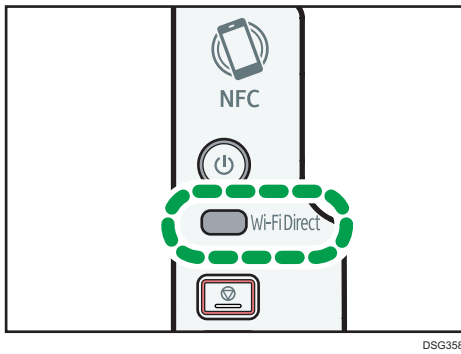
### 1. Press the [Wi-Fi Direct] key.

Multi-function printer



DSH043

## Single-function printer



The LED of [Wi-Fi Direct] key starts flashing.

2. **Select the SSID (DIRECT-XXXXXX) of the machine from available wireless connection in your computer, and then click [Connect].**



A window for entering the encryption key opens.

3. **Enter the encryption key for Wi-Fi Direct.**

The default encryption key is “admin123”.

For details about changing the encryption key, see page 10 “How to Change the Encryption Key of Wi-Fi Direct”.

4. **Confirm LED of the [Wi-Fi Direct] key is on.**

Configuring the Wi-Fi settings is complete.

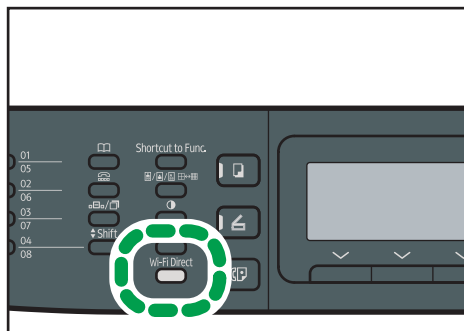
# Connecting Using OS X

## ★ Important

- In Steps 1 to 5, configure each setting within two minutes.

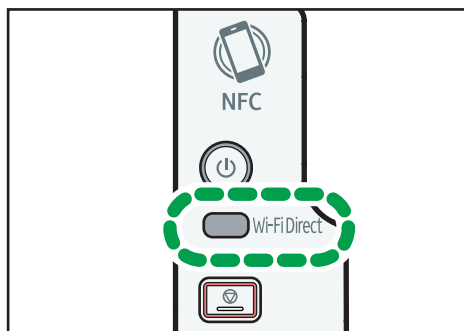
### 1. Press the [Wi-Fi Direct] key.

Multi-function printer



DSH043

Single-function printer



DSG358

The LED of [Wi-Fi Direct] key starts flashing.

### 2. Start System Preferences in your computer.

### 3. Click [Network].

### 4. Click [Wi-Fi].

### 5. Select the SSID (DIRECT-XXXXXX) of the machine from the [Network Name] pop-up menu.

The window for entering an encryption key is displayed.

### 6. Enter the encryption key of Wi-Fi Direct.

The default encryption key is “admin123”.

For details about changing the encryption key, see page 10 “How to Change the Encryption Key of Wi-Fi Direct”.

### 7. Confirm LED of the [Wi-Fi Direct] key is on.

Configuring the Wi-Fi settings is complete.

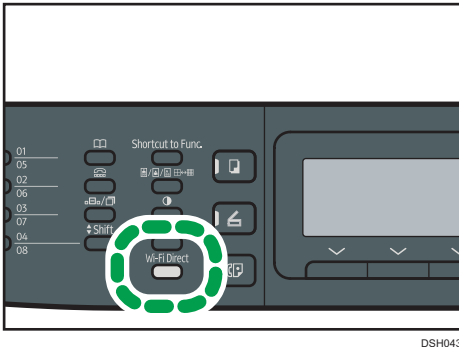
# Connecting Using Android device

## ★ Important

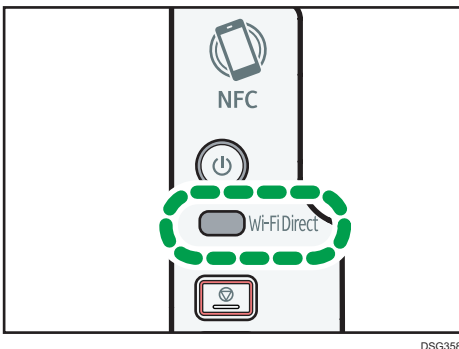
- In Steps 1 to 4, configure each setting within two minutes.

### 1. Press the [Wi-Fi Direct] key.

Multi-function printer



Single-function printer



The LED of [Wi-Fi Direct] key starts flashing.

### 2. Open the advanced menu from available wireless connection screen in your Android device.

### 3. Tap [Wi-Fi Direct].

### 4. Tap the SSID (DIRECT-XXXXXX) of the machine.

The screen for entering an encryption key is displayed.

### 5. Enter the encryption key of Wi-Fi Direct.

The default encryption key is “admin123”.

For details about changing the encryption key, see page 10 “How to Change the Encryption Key of Wi-Fi Direct”.

### 6. Confirm the string under the SSID of the machine changes to “connected”, and LED of the [Wi-Fi Direct] key is on.

Configuring the Wi-Fi settings is complete.



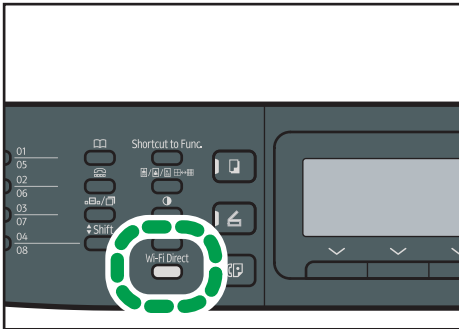
# Connecting Using iOS device

## ★ Important

- In Steps 1 to 4, configure each setting within two minutes.

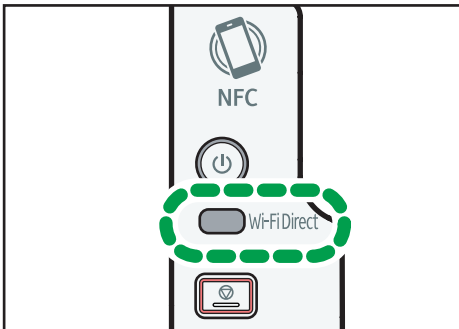
## 1. Press the [Wi-Fi Direct] key.

Multi-function printer



DSH043

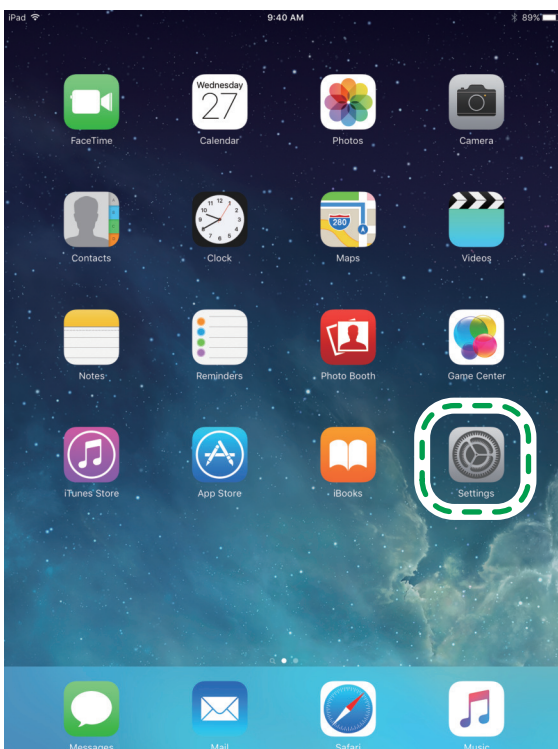
Single-function printer



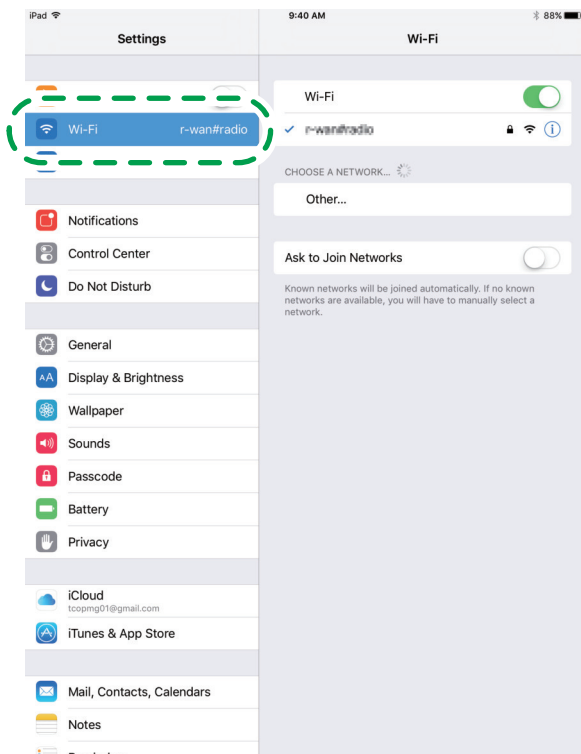
DSG358

The LED of [Wi-Fi Direct] key starts flashing.

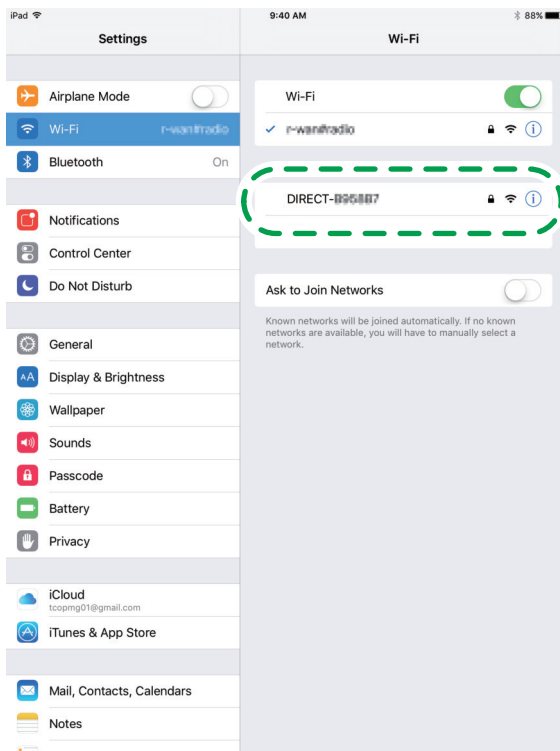
## 2. Tap [Settings] in your iOS device.



### 3. Tap [Wi-Fi].



### 4. Tap the SSID (DIRECT-XXXXXX) of the machine.



The screen for entering an encryption key is displayed.

### 5. Enter the encryption key of Wi-Fi Direct.

The default encryption key is “admin123”.

For details about changing the encryption key, see page 10 “How to Change the Encryption Key of Wi-Fi Direct”.

### 6. Confirm LED of the [Wi-Fi Direct] key is on.

Configuring the Wi-Fi settings is complete.

## 2. Troubleshooting

### Connection Problems

Problem	Possible cause	Solution
Problems occur even after you configure the connection settings again.	The SSID or encryption key is not entered correctly.	Check that the SSID or encryption key is entered correctly. Prefix a character string "DIRECT-" to the SSID. You can enter a maximum of 32 characters, which includes "DIRECT-".

### Connection has Succeeded but the Wireless LAN Cannot be Used

Problem	Possible cause	Solution
A connection has been established but the wireless LAN cannot be used.	An Ethernet cable is connected to the machine.	If Ethernet and wireless LAN are both connected, Ethernet has priority. To use the wireless LAN, disconnect the Ethernet cable from the machine.
	Connection may fail due to radio wave conditions.	If there is another wireless network nearby, the wireless connection may fail. Wait for a while, and then connect to the network again.

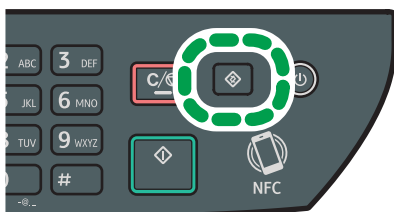
# How to Change the Encryption Key of Wi-Fi Direct

## If You are Using Multi-function Printer

You can change the encryption key of Wi-Fi Direct by using the control panel, Web Image Monitor, or Smart Organizing Monitor.

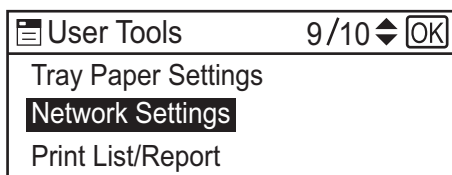
### Configuring Settings Using the Control Panel

#### 1. Press the [User Tools] key.



DSG126

#### 2. Press the [▼] or [▲] key to select [Network Settings], and then press the [OK] key.

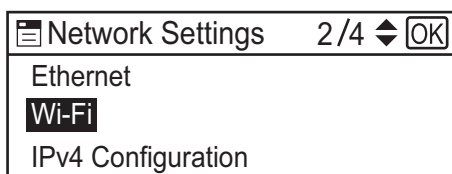


DSG083

#### 3. If you are requested to enter a password, enter the password using the number keys, and then press the [OK] key.

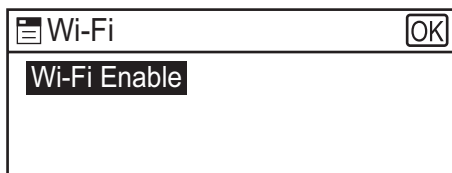
A password for accessing the [Network Settings] menu can be specified in [Admin. Tools Lock] under [Admin. Tools] menu.

#### 4. Press the [▼] or [▲] key to select [Wi-Fi], and then press the [OK] key.



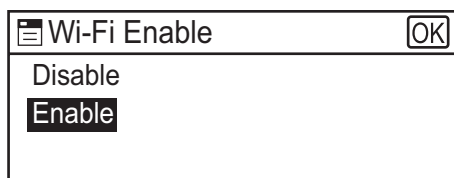
DSG084

#### 5. Select [Wi-Fi Enable], and then press the [OK] key.



DSG085

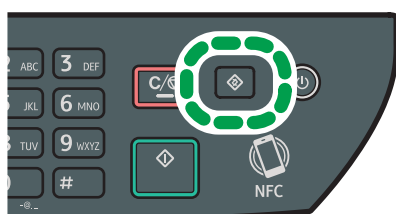
6. Press the [▼] or [▲] key to select [Enable], and then press the [OK] key.



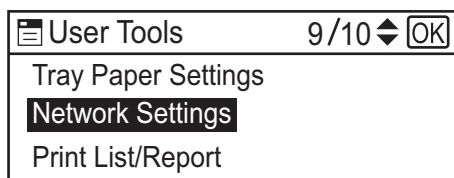
7. Press the [User Tools] key to return to the Initial screen.

8. Wait until the machine restarts.

9. Press the [User Tools] key.



10. Press the [▼] or [▲] key to select [Network Settings], and then press the [OK] key.

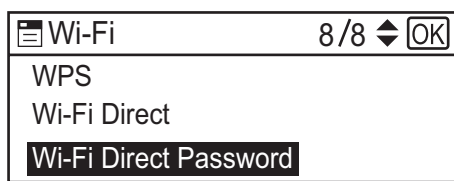


11. If you are requested to enter a password, enter the password using the number keys, and then press the [OK] key.

A password for accessing the [Network Settings] menu can be specified in [Admin. Tools Lock] under [Admin. Tools] menu.

12. Press the [▼] or [▲] key to select [Wi-Fi], and then press the [OK] key.

13. Press the [▼] or [▲] key to select [Wi-Fi Direct Password], and then press the [OK] key.



**14. Enter the encryption key using the number keys, and then press the [OK] key.**

Enter Password
*****
[8 to 32 characters]

DTN702

**15. Press the [User Tools] key to return to the Initial screen.**

**16. Wait until the machine restarts.**

### Configuring Settings Using Web Image Monitor

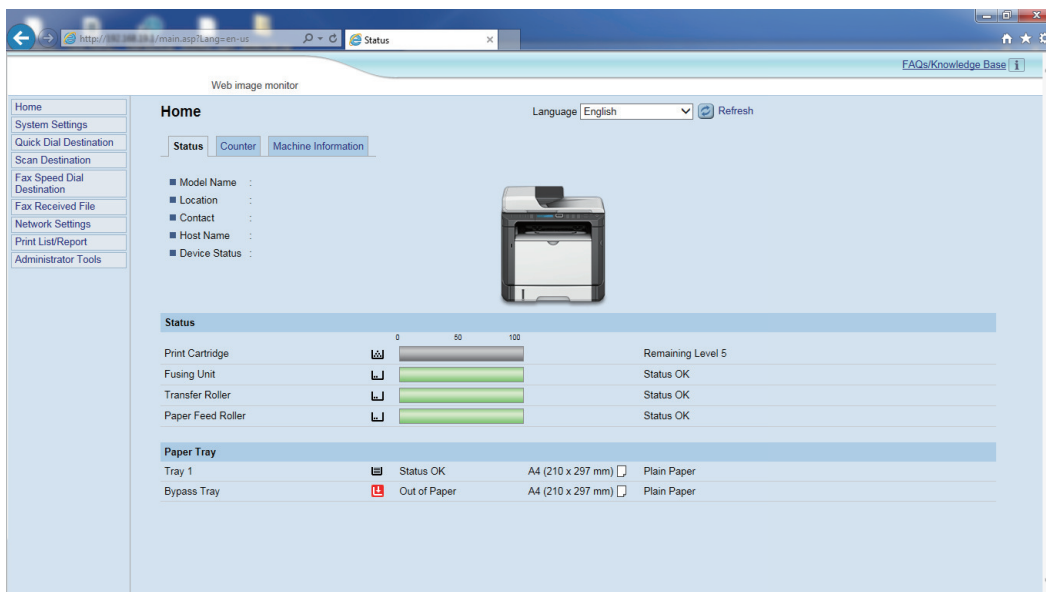
**1. Start your web browser.**

**2. Enter “http://(machine’s IP address or host name)/” in your web browser’s URL bar.**

Top Page of Web Image Monitor appears.

If the machine’s host name has been registered on the DNS or WINS server, you can enter it.

**3. Click [Network Settings].**



**4. Click the [Wireless] tab.**

**5. Enter the encryption key in [WPA Passphrase] under [Wi-Fi Direct Settings], and then press the [OK] key.**

**6. Enter the administrator password if you have registered the password in [Administrator Tools].**

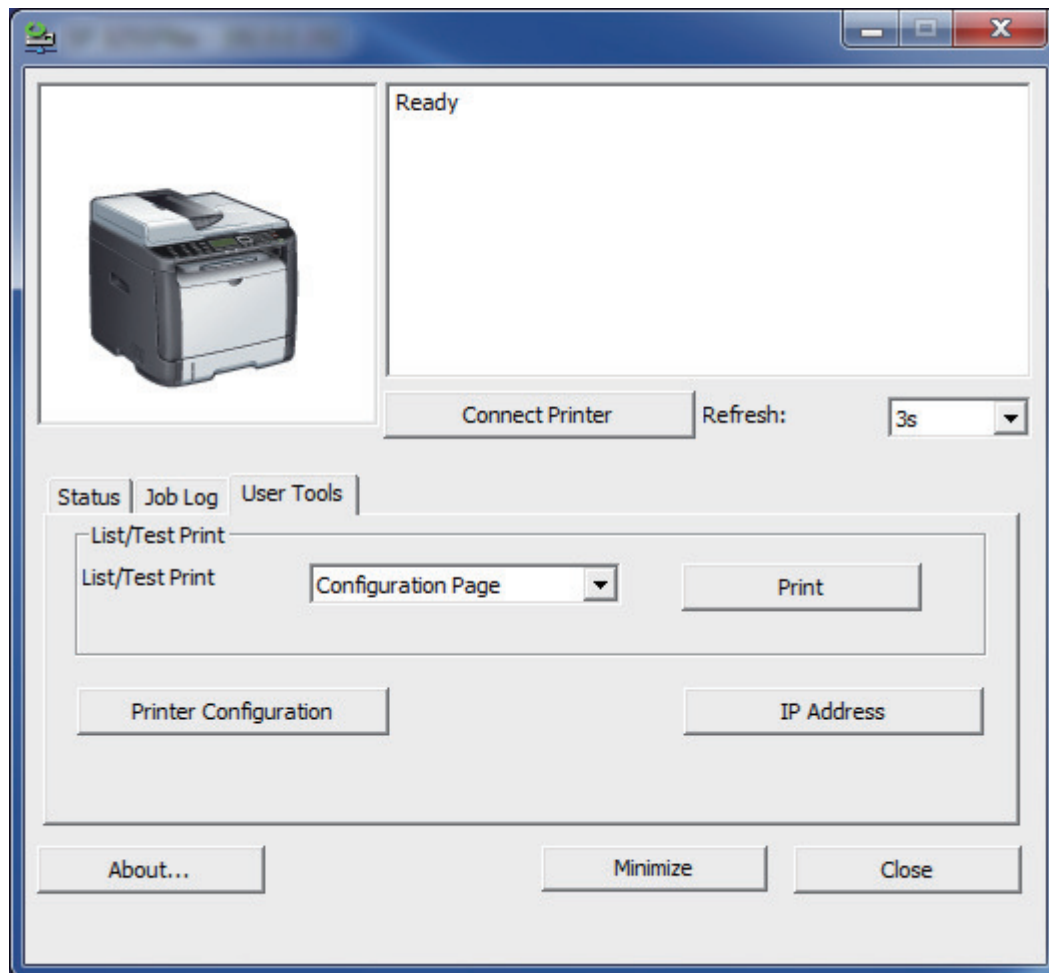
**7. Close your web browser.**

## Configuring Settings Using Smart Organizing Monitor

### **1. Install and start the Smart Organizing Monitor.**

For details about the procedure of Windows, see Setup Guide. For details about the procedure of OS X, see User's Guide.

### **2. On the [User Tools] tab, click [Printer Configuration].**



### **3. Enter the access code, and then click [OK].**

The default access code is "Admin".

### **4. Click the [Network 1] tab.**

### **5. Enter the encryption key in [Wi-Fi Direct Password].**

### **6. Click [OK].**

### **7. If the confirmation message is displayed, click [OK].**

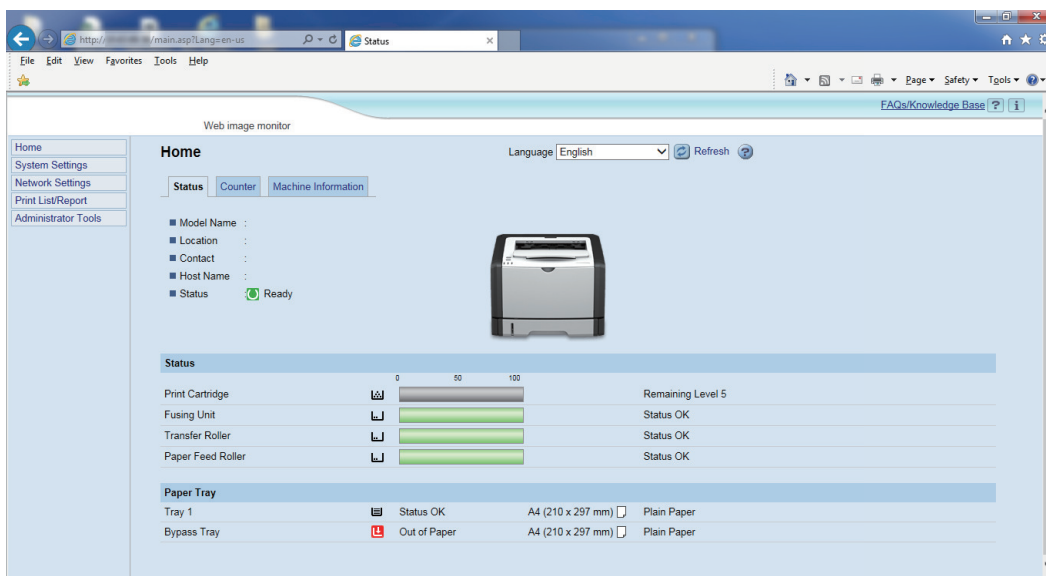
### **8. Click [Close].**

## If You are Using Single-function Printer

You can change the encryption key of Wi-Fi Direct by using Web Image Monitor or Smart Organizing Monitor.

### Configuring Settings Using Web Image Monitor

1. **Start your web browser.**
2. **Enter “http://(machine’s IP address or host name)/” in your web browser’s URL bar.**  
Top Page of Web Image Monitor appears.  
If the machine’s host name has been registered on the DNS or WINS server, you can enter it.
3. **Click [Network Settings].**



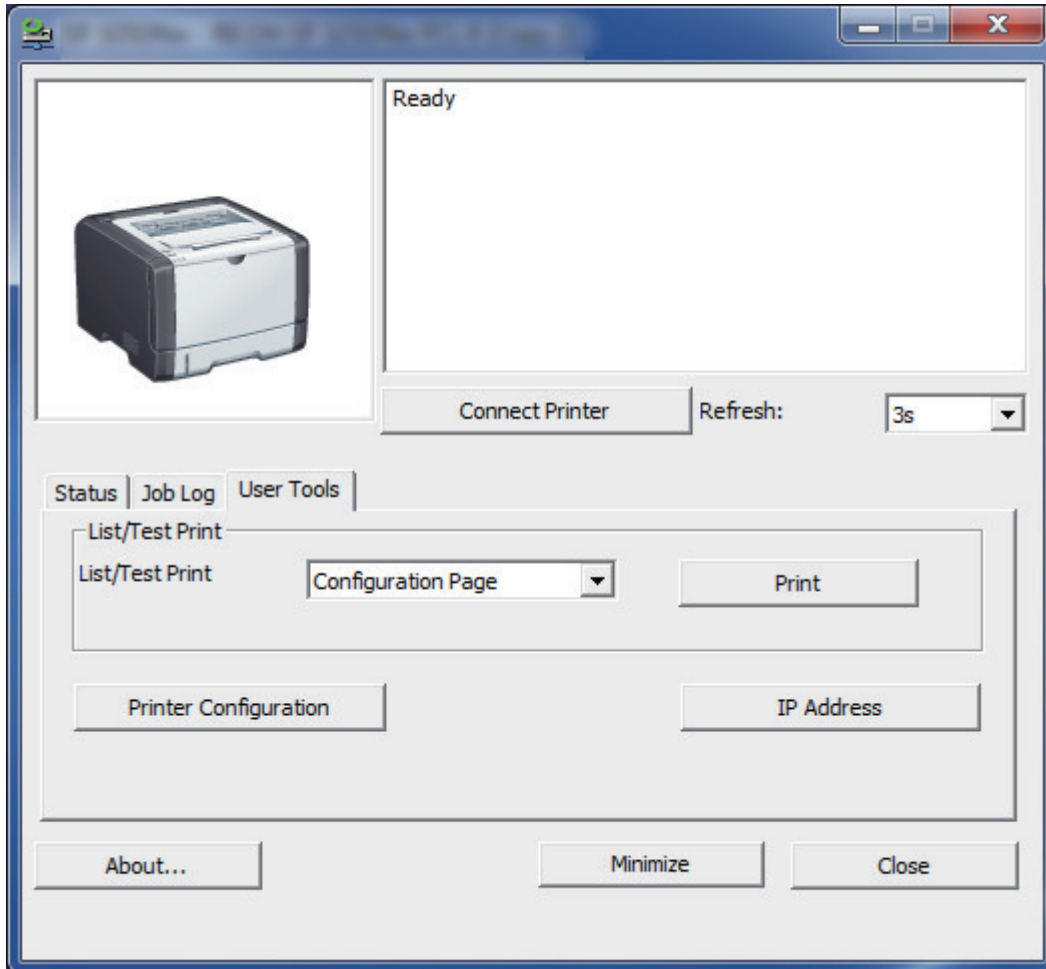
4. **Click the [Wireless] tab.**
5. **Enter the encryption key in [WPA Passphrase] under [Wi-Fi Direct Settings], and then press the [OK] key.**
6. **Enter the administrator password if you have registered the password in [Administrator Tools].**
7. **Close your web browser.**



**1. Install and start the Smart Organizing Monitor.**

For details about the procedure of Windows, see Setup Guide. For details about the procedure of OS X, see User's Guide.

**2. On the [User Tools] tab, click [Printer Configuration].**



**3. Enter the access code, and then click [OK].**

The default access code is "Admin".

**4. Click the [Network 1] tab.**

**5. Enter the encryption key in [Wi-Fi Direct Password].**

**6. Click [OK].**

**7. If the confirmation message is displayed, click [OK].**

**8. Click [Close].**

# Trademark

Android is a trademark of Google Inc.

IOS is a trademark or registered trademark of Cisco in the U.S. and other countries and is used under license.

Wi-Fi, Wi-Fi Direct are registered trademarks of Wi-Fi Alliance.

OS X is a trademarks or registered trademarks of Apple Inc., in the United States and other countries.

Microsoft®, Windows® are either registered trademarks or trademarks of Microsoft Corporation in the United States and/or other countries/regions.

Other product names used in this manual are for identification purposes only and may be trademarks of their respective companies.

We do not have any or all rights to these marks.

All Microsoft product screenshots are reprinted with permission from the Microsoft Corporation.



