

Reissued: 09-Dec-16

Model: OP-P1	Date: 14-Dec-12	No.: RM133001a
--------------	-----------------	----------------

RTB Reissue

The items in ***bold italics*** have been corrected or added.

Subject: Firmware Release Note: Controller		Prepared by: Y. Miyamoto	
From: 1st Tech Service Sect., MFP/Printer Tech Service Dept.			
Classification:	<input type="checkbox"/> Troubleshooting <input type="checkbox"/> Mechanical <input type="checkbox"/> Paper path <input type="checkbox"/> Product Safety	<input type="checkbox"/> Part information <input type="checkbox"/> Electrical <input type="checkbox"/> Transmit/receive <input checked="" type="checkbox"/> Other (Firmware)	<input type="checkbox"/> Action required <input type="checkbox"/> Service manual revision <input type="checkbox"/> Retrofit information <input checked="" type="checkbox"/> Tier 2

This RTB has been issued to announce the firmware release information for the **Controller**.

Version	Program No.	Effective Date	Availability of RFU
<i>1.01</i>	<i>M1335051E</i>	<i>December 2016 production</i>	<i>Not available</i>
1.00	M1335051D	1st Mass production	Not available

Note: Definition of Availability of RFU via @Remote
"Available": The firmware can be updated via RFU or SD card.

"Not available": The firmware can only be updated via SD card.

Version	Modified Points or Symptom Corrected
<i>1.01</i>	<i>Minor bug fixed</i>
1.00	1st Mass production

Reissued: 09-Dec-16
Model: OP-MF1(3IN1) (China)
Date: 14-Dec-12
No.: RM133002b
RTB Reissue

The items in ***bold italics*** have been corrected or added.

Subject: Firmware Release Note: Controller (3IN1 Type-A) for China models			Prepared by: Y. Miyamoto
From: 1st Tech Service Sect., MFP/Printer Tech Service Dept.			
Classification:	<input type="checkbox"/> Troubleshooting <input type="checkbox"/> Mechanical <input type="checkbox"/> Paper path <input type="checkbox"/> Product Safety	<input type="checkbox"/> Part information <input type="checkbox"/> Electrical <input type="checkbox"/> Transmit/receive <input checked="" type="checkbox"/> Other (Firmware)	<input type="checkbox"/> Action required <input type="checkbox"/> Service manual revision <input type="checkbox"/> Retrofit information <input checked="" type="checkbox"/> Tier 2

This RTB has been issued to announce the firmware release information for the **Controller (3IN1 Type-A) for China models.**

Version	Program No.	Effective Date	Availability of RFU
<i>1.03</i>	<i>M1345051F</i>	<i>December 2016 production</i>	<i>Not available</i>
1.02	M1345051E	September 2013 production	Not available
1.00	M1345051D	1st Mass production	Not available

Note: Definition of Availability of RFU via @Remote
"Available": The firmware can be updated via RFU or SD card.
"Not available": The firmware can only be updated via SD card.

Version	Modified Points or Symptom Corrected
<i>1.03</i>	<i>Minor bug fixed</i>
1.02	1. Copy image algorithm changed to improve color reproducibility. 2. Default copy mode changed from "Text/Photo" to "Text". (China model only) 3. Minor bug fixed.
1.00	1st Mass production

Firmware	Destination	I/F	FW Type-	Product Name
Controller for 4 in 1	WW	USB	C	RICOH SP 203SF
	WW	USB	C	RICOH SP 204SF
	CHN	USB	A	RICOH SP 200SF
	CHN	USB	A	RICOH SP 201SF
	CHN	NIC	B	RICOH SP 202SF
	WW	NIC	B	RICOH SP 203SFN
	WW	NIC	B	RICOH SP 204SFN
Controller for 3 in 1	WW	USB	D	RICOH SP 200S
	WW	USB	D	RICOH SP 203S
	CHN	USB	A	RICOH SP 200S
	CHN	NIC	B	RICOH SP 201S
	WW	NIC	C	RICOH SP 202SN
	WW	NIC	C	RICOH SP 204SN
Controller for Printer	WW	USB	C	RICOH SP 200
	CHN	USB	A	RICOH SP 200
	CHN	NIC	B	RICOH SP 200N
	WW	NIC	B	RICOH SP 200N

Reissued: 09-Dec-16

Model: OP-MF1(3IN1) (China)			Date: 14-Dec-12	No.: RM133002b
	WW	NIC	B	RICOH SP 201N

WW: World Wide, CHN: China, I/F: USB or NIC(Network)

Reissued: 09-Dec-16
Model: OP-MF1(4IN1)(China)
Date: 14-Dec-12
No.: RM133003c
RTB Reissue

The items in ***bold italics*** have been corrected or added.

Subject: Firmware Release Note: Controller 4IN1 Type-A for China model			Prepared by: Y. Miyamoto
From: 1st Tech Service Sect., MFP/Printer Tech Service Dept.			
Classification:	<input type="checkbox"/> Troubleshooting <input type="checkbox"/> Mechanical <input type="checkbox"/> Paper path <input type="checkbox"/> Product Safety	<input type="checkbox"/> Part information <input type="checkbox"/> Electrical <input type="checkbox"/> Transmit/receive <input checked="" type="checkbox"/> Other (Firmware)	<input type="checkbox"/> Action required <input type="checkbox"/> Service manual revision <input type="checkbox"/> Retrofit information <input checked="" type="checkbox"/> Tier 2

This RTB has been issued to announce the firmware release information for the **Controller 4IN1 Type-A for China model**.

Version	Program No.	Effective Date	Availability of RFU
1.03	M1355051G	December 2016 production	Not available
1.02	M1355051F	September 2013 production	Not available
1.01	M1355051E	March 2013 production	Not available
1.00	M1355051D	1st Mass production	Not available

Note: Definition of Availability of RFU via @Remote
"Available": The firmware can be updated via RFU or SD card.

"Not available": The firmware can only be updated via SD card.

Version	Modified Points or Symptom Corrected
1.03	Minor bug fixed
1.02	1. Copy image algorithm changed to improve color reproducibility. 2. Default copy mode changed from "Text/Photo" to "Text". (China model only) 3. Minor bug fixed.
1.01	Symptom corrected: The [OK] key is indicated incorrectly on the operation panel.
1.00	1st Mass production

Firmware	Destination	I/F	FW Type-	Product Name
Controller for 4 in 1	WW	USB	C	RICOH SP 203SF
	WW	USB	C	RICOH SP 204SF
	CHN	USB	A	RICOH SP 200SF
	CHN	USB	A	RICOH SP 201SF
	CHN	NIC	B	RICOH SP 202SF
	WW	NIC	B	RICOH SP 203SFN
	WW	NIC	B	RICOH SP 204SFN
Controller for 3 in 1	WW	USB	D	RICOH SP 200S
	WW	USB	D	RICOH SP 203S
	CHN	USB	A	RICOH SP 200S
	CHN	NIC	B	RICOH SP 201S
	WW	NIC	C	RICOH SP 202SN
	WW	NIC	C	RICOH SP 204SN
Controller for Printer	WW	USB	C	RICOH SP 200
	CHN	USB	A	RICOH SP 200
	CHN	NIC	B	RICOH SP 200N
	WW	NIC	B	RICOH SP 200N
	WW	NIC	B	RICOH SP 201N

Reissued: 09-Dec-16Model: **OP-MF1(4IN1)(China)**

Date: 14-Dec-12

No.: RM133003c

WW: World Wide, CHN: China, I/F: USB or NIC (Network)

Reissued: 19-May-14

Model: OP-P1/OP-MF1(3IN1)/OP-MF1(4IN1) (China)	Date: 14-Dec-12	No.: RM133004f
--	-----------------	----------------

RTB Reissue

The items in bold italics have been corrected or added.

Subject: Firmware Release Note: Engine for China models		Prepared by: T. Sakakibara	
From: 3rd Tech Service Sect., MFP/Printer Tech Service Dept.			
Classification:	<input type="checkbox"/> Troubleshooting <input type="checkbox"/> Mechanical <input type="checkbox"/> Paper path <input type="checkbox"/> Product Safety	<input type="checkbox"/> Part information <input type="checkbox"/> Electrical <input type="checkbox"/> Transmit/receive <input checked="" type="checkbox"/> Other (Firmware)	<input type="checkbox"/> Action required <input type="checkbox"/> Service manual revision <input type="checkbox"/> Retrofit information <input checked="" type="checkbox"/> Tier 2

This RTB has been issued to announce the firmware release information for the **Engine for China models**.

Version	Program No.	Effective Date	Availability of RFU
1.07:01	M1335451K	May 2014 production	Not available
1.06:01	M1335451J	May 2014 production	Not available
1.05	M1335451H	November 2013 production	Not available
1.04	M1335451G	September 2013 production	Not available
1.03:01	M1335451F	June 2013 production	Not available
1.02:01	M1335451E	1st Mass production	Not available

Note: Definition of Availability of RFU via @Remote
“Available”: The firmware can be updated via RFU or SD card.

“Not available”: The firmware can only be updated via SD card.

Version	Modified Points or Symptom Corrected
1.07:01	Specification change: 1. SC542 which triggered by poor power source can be cleared by switch power OFF/ON. 2. To prevent paper wrap around the hot roller, the paper which jammed before entering the fusing unit will not be output automatically.
1.06:01	Symptom corrected: Faint Print or creases might occur within the area of 9mm from the leading end of the 1st printed paper.
1.05	Specification Change: 1. SC542 detection mechanism changed same as v1.03 for preventing safety risk. 2. Minor bug fixed.
1.04	Specification Change 1. Reduce SC542 which caused by transient unstable input voltage 2. SC542 which caused by unstable input voltage can be recovered by switch power OFF/ON

Reissued: 19-May-14

Model: OP-P1/OP-MF1(3IN1)/OP-MF1(4IN1) (China)	Date: 14-Dec-12	No.: RM133004f
--	-----------------	----------------

Version	Modified Points or Symptom Corrected
1.03:01	Symptom corrected: The machine may stall due to a fusing control failure. Other changes: This firmware now supports the following models: SP-200 Q, 200S Q, 200SF Q and 201SF Q.
1.02:01	1st Mass production

Reissued: 09-Dec-16

Model: OP-P1(WW, China)	Date: 10-Apr-13	No.: RM133005b
-------------------------	-----------------	----------------

RTB Reissue

The items in ***bold italics*** have been corrected or added.

Subject: Firmware Release Note: Controller (Type-B) for EU/Americas/Asia/China models		Prepared by:
From: 1st Tech Service Sect., MFP/Printer Tech Service Dept.		Y. Miyamoto
Classification:	<input type="checkbox"/> Troubleshooting <input type="checkbox"/> Part information <input type="checkbox"/> Action required <input type="checkbox"/> Mechanical <input type="checkbox"/> Electrical <input type="checkbox"/> Service manual revision <input type="checkbox"/> Paper path <input type="checkbox"/> Transmit/receive <input type="checkbox"/> Retrofit information <input type="checkbox"/> Product Safety <input checked="" type="checkbox"/> Other (Firmware) <input checked="" type="checkbox"/> Tier 2	

This RTB has been issued to announce the firmware release information for the **Controller (Printer Type-B) for EU/Americas/Asia/China models**.

Version	Program No.	Effective Date	Availability of RFU
<i>1.02</i>	<i>M1335052D</i>	<i>December 2016 production</i>	<i>Not available</i>
1.01	M1335052C	July 2013 production	Not available
1.00	M1335052B	1st Mass production	Not available

Note: Definition of Availability of RFU via @Remote
"Available": The firmware can be updated via RFU or SD card.

"Not available": The firmware can only be updated via SD card.

Version	Modified Points or Symptom Corrected
<i>1.02</i>	<i>Minor bug fixed</i>
1.01	Minor bug fixed
1.00	1st Mass production

Firmware	Destination	I/F	FW Type-	Product Name
Controller for 4 IN 1	WW	USB	C	RICOH SP 203SF
	WW	USB	C	RICOH SP 204SF
	CHN	USB	A	RICOH SP 200SF
	CHN	USB	A	RICOH SP 201SF
	CHN	NIC	B	RICOH SP 202SF
	WW	NIC	B	RICOH SP 203SFN
	WW	NIC	B	RICOH SP 204SFN
Controller for 3 IN 1	WW	USB	D	RICOH SP 200S
	WW	USB	D	RICOH SP 203S
	CHN	USB	A	RICOH SP 200S
	CHN	NIC	B	RICOH SP 201S
	WW	NIC	C	RICOH SP 202SN
	WW	NIC	C	RICOH SP 204SN
Controller for Printer	WW	USB	C	RICOH SP 200
	CHN	USB	A	RICOH SP 200
	CHN	NIC	B	RICOH SP 200N
	WW	NIC	B	RICOH SP 200N
	WW	NIC	B	RICOH SP 201N

WW: World Wide, CHN: China, I/F: USB or NIC(Network)

Reissued: 09-Dec-16

Model: OP-P1(WW)	Date: 10-Apr-13	No.: RM133006b
------------------	-----------------	----------------

RTB Reissue

The items in ***bold italics*** have been corrected or added.

Subject: Firmware Release Note: Controller (Type-C) for Asia model		Prepared by: Y. Miyamoto	
From: 1st Tech Service Sect., MFP/Printer Tech Service Dept.			
Classification:	<input type="checkbox"/> Troubleshooting <input type="checkbox"/> Mechanical <input type="checkbox"/> Paper path <input type="checkbox"/> Product Safety	<input type="checkbox"/> Part information <input type="checkbox"/> Electrical <input type="checkbox"/> Transmit/receive <input checked="" type="checkbox"/> Other (Firmware)	<input type="checkbox"/> Action required <input type="checkbox"/> Service manual revision <input type="checkbox"/> Retrofit information <input checked="" type="checkbox"/> Tier 2

This RTB has been issued to announce the firmware release information for the **Controller (Printer Type-C) for Asia model**.

Version	Program No.	Effective Date	Availability of RFU
1.02	M1335054C	December 2016 production	Not available
1.01	M1335054B	July 2013 production	Not available
1.00	M1335054A	1st Mass production	Not available

Note: Definition of Availability of RFU via @Remote
“Available”: The firmware can be updated via RFU or SD card.

“Not available”: The firmware can only be updated via SD card.

Version	Modified Points or Symptom Corrected
1.02	Minor bug fixed
1.01	Minor bug fixed
1.00	1st Mass production

Firmware	Destination	I/F	FW Type-	Product Name
Controller for 4 in 1	WW	USB	C	RICOH SP 203SF
	WW	USB	C	RICOH SP 204SF
	CHN	USB	A	RICOH SP 200SF
	CHN	USB	A	RICOH SP 201SF
	CHN	NIC	B	RICOH SP 202SF
	WW	NIC	B	RICOH SP 203SFN
	WW	NIC	B	RICOH SP 204SFN
Controller for 3 in 1	WW	USB	D	RICOH SP 200S
	WW	USB	D	RICOH SP 203S
	CHN	USB	A	RICOH SP 200S
	CHN	NIC	B	RICOH SP 201S
	WW	NIC	C	RICOH SP 202SN
	WW	NIC	C	RICOH SP 204SN
Controller for Printer	WW	USB	C	RICOH SP 200
	CHN	USB	A	RICOH SP 200
	CHN	NIC	B	RICOH SP 200N
	WW	NIC	B	RICOH SP 200N
	WW	NIC	B	RICOH SP 201N

WW: World Wide, CHN: China, I/F: USB or NIC(Network)

Reissued: 09-Dec-16

Model: OP-P1(WW)	Date: 10-Apr-13	No.: RM133006b
------------------	-----------------	----------------

Reissued: 09-Dec-16

Model: OP-MF1(3IN1) (China)	Date: 10-Apr-13	No.: RM133007b
-----------------------------	-----------------	----------------

RTB Reissue

The items in ***bold italics*** have been corrected or added.

Subject: Firmware Release Note: Controller (Type-B) for China Network model		Prepared by:
From: 1st Tech Service Sect., MFP/Printer Tech Service Dept.		Y. Miyamoto
Classification:	<input type="checkbox"/> Troubleshooting <input type="checkbox"/> Part information <input type="checkbox"/> Action required <input type="checkbox"/> Mechanical <input type="checkbox"/> Electrical <input type="checkbox"/> Service manual revision <input type="checkbox"/> Paper path <input type="checkbox"/> Transmit/receive <input type="checkbox"/> Retrofit information <input type="checkbox"/> Product Safety <input checked="" type="checkbox"/> Other (Firmware) <input checked="" type="checkbox"/> Tier 2	

This RTB has been issued to announce the firmware release information for the **Controller (3IN1 Type-B) for China Network model**.

Version	Program No.	Effective Date	Availability of RFU
1.03	M1345052E	December 2016 production	Not available
1.02	M1345052D	September 2013 production	Not available
1.00	M1345052B	1st Mass production	Not available

Note: Definition of Availability of RFU via @Remote
"Available": The firmware can be updated via RFU or SD card.

"Not available": The firmware can only be updated via SD card.

Version	Modified Points or Symptom Corrected
1.03	Minor bug fixed
1.02	1. Copy image algorithm changed to improve color reproducibility. 2. Default copy mode changed from "Text/Photo" to "Text". (China model only) 3. Minor bug fixed
1.00	1st Mass production

Firmware	Destination	I/F	FW Type-	Product Name
Controller for 4 in 1	WW	USB	C	RICOH SP 203SF
	WW	USB	C	RICOH SP 204SF
	CHN	USB	A	RICOH SP 200SF
	CHN	USB	A	RICOH SP 201SF
	CHN	NIC	B	RICOH SP 202SF
	WW	NIC	B	RICOH SP 203SFN
	WW	NIC	B	RICOH SP 204SFN
Controller for 3 in 1	WW	USB	D	RICOH SP 200S
	WW	USB	D	RICOH SP 203S
	CHN	USB	A	RICOH SP 200S
	CHN	NIC	B	RICOH SP 201S
	WW	NIC	C	RICOH SP 202SN
	WW	NIC	C	RICOH SP 204SN
Controller for Printer	WW	USB	C	RICOH SP 200
	CHN	USB	A	RICOH SP 200
	CHN	NIC	B	RICOH SP 200N
	WW	NIC	B	RICOH SP 200N
	WW	NIC	B	RICOH SP 201N

Reissued: 09-Dec-16Model: **OP-MF1(3IN1) (China)**

Date: 10-Apr-13

No.: RM133007b

WW: World Wide, CHN: China, I/F: USB or NIC(Network)

Reissued: 09-Dec-16
Model: OP-MF1(3IN1) (WW)
Date: 10-Apr-13
No.: RM133008c
RTB Reissue

The items in ***bold italics*** have been corrected or added.

Subject: Firmware Release Note: Controller (Type-C) for EU/Americas/Asia models			Prepared by:
From: 1st Tech Service Sect., MFP/Printer Tech Service Dept.			Y. Miyamoto
Classification:	<input type="checkbox"/> Troubleshooting <input type="checkbox"/> Mechanical <input type="checkbox"/> Paper path <input type="checkbox"/> Product Safety	<input type="checkbox"/> Part information <input type="checkbox"/> Electrical <input type="checkbox"/> Transmit/receive <input checked="" type="checkbox"/> Other (Firmware)	<input type="checkbox"/> Action required <input type="checkbox"/> Service manual revision <input type="checkbox"/> Retrofit information <input checked="" type="checkbox"/> Tier 2

This RTB has been issued to announce the firmware release information for the **Controller (3IN1 Type-C) for EU/Americas/Asia models.**

Version	Program No.	Effective Date	Availability of RFU
<i>1.04</i>	<i>M1345053F</i>	<i>December 2016 production</i>	<i>Not available</i>
1.03	M1345053E	November 2013 production	Not available
1.02	M1345053D	September 2013 production	Not available
1.00	M1345053B	1st Mass production	Not available

Note: Definition of Availability of RFU via @Remote
“Available”: The firmware can be updated via RFU or SD card.

“Not available”: The firmware can only be updated via SD card.

Version	Modified Points or Symptom Corrected
<i>1.04</i>	<i>Minor bug fixed</i>
1.03	Minor bug fixed
1.02	1. Copy image algorithm changed to improve color reproducibility. 2. Minor bug fixed.
1.00	1st Mass production

Firmware	Destination	I/F	FW Type-	Product Name
Controller for 4 in 1	WW	USB	C	RICOH SP 203SF
	WW	USB	C	RICOH SP 204SF
	CHN	USB	A	RICOH SP 200SF
	CHN	USB	A	RICOH SP 201SF
	CHN	NIC	B	RICOH SP 202SF
	WW	NIC	B	RICOH SP 203SFN
	WW	NIC	B	RICOH SP 204SFN
Controller for 3 in 1	WW	USB	D	RICOH SP 200S
	WW	USB	D	RICOH SP 203S
	CHN	USB	A	RICOH SP 200S
	CHN	NIC	B	RICOH SP 201S
	WW	NIC	C	RICOH SP 202SN
	WW	NIC	C	RICOH SP 204SN
Controller for Printer	WW	USB	C	RICOH SP 200
	CHN	USB	A	RICOH SP 200
	CHN	NIC	B	RICOH SP 200N
	WW	NIC	B	RICOH SP 200N
	WW	NIC	B	RICOH SP 201N

Reissued: 09-Dec-16Model: **OP-MF1(3IN1) (WW)**

Date: 10-Apr-13

No.: RM133008c

WW: World Wide, CHN: China, I/F: USB or NIC(Network)

Reissued: 09-Dec-16
Model: OP-MF1(3IN1) (WW)
Date: 10-Apr-13
No.: RM133009b
RTB Reissue

The items in ***bold italics*** have been corrected or added.

Subject: Firmware Release Note: Controller (Type-D) for EU/Americas/Asia models			Prepared by:
From: 1st Tech Service Sect., MFP/Printer Tech Service Dept.			Y. Miyamoto
Classification:	<input type="checkbox"/> Troubleshooting <input type="checkbox"/> Mechanical <input type="checkbox"/> Paper path <input type="checkbox"/> Product Safety	<input type="checkbox"/> Part information <input type="checkbox"/> Electrical <input type="checkbox"/> Transmit/receive <input checked="" type="checkbox"/> Other (Firmware)	<input type="checkbox"/> Action required <input type="checkbox"/> Service manual revision <input type="checkbox"/> Retrofit information <input checked="" type="checkbox"/> Tier 2

This RTB has been issued to announce the firmware release information for the **Controller (3IN1 Type-D) for EU/Americas/Asia models.**

Version	Program No.	Effective Date	Availability of RFU
1.03	M1345054D	December 2016 production	Not available
1.02	M1345054C	September 2013 production	Not available
1.00	M1345054A	1st Mass production	Not available

Note: Definition of Availability of RFU via @Remote
“Available”: The firmware can be updated via RFU or SD card.

“Not available”: The firmware can only be updated via SD card.

Version	Modified Points or Symptom Corrected
1.03	Minor bug fixed
1.02	1. Copy image algorithm changed to improve color reproducibility. 2. Minor bug fixed.
1.00	1st Mass production

Firmware	Destination	I/F	FW Type-	Product Name
Controller for 4 in 1	WW	USB	C	RICOH SP 203SF
	WW	USB	C	RICOH SP 204SF
	CHN	USB	A	RICOH SP 200SF
	CHN	USB	A	RICOH SP 201SF
	CHN	NIC	B	RICOH SP 202SF
	WW	NIC	B	RICOH SP 203SFN
	WW	NIC	B	RICOH SP 204SFN
	WW	NIC	B	RICOH SP 204SFN
Controller for 3 in 1	WW	USB	D	RICOH SP 200S
	WW	USB	D	RICOH SP 203S
	CHN	USB	A	RICOH SP 200S
	CHN	NIC	B	RICOH SP 201S
	WW	NIC	C	RICOH SP 202SN
	WW	NIC	C	RICOH SP 204SN
Controller for Printer	WW	USB	C	RICOH SP 200
	CHN	USB	A	RICOH SP 200
	CHN	NIC	B	RICOH SP 200N
	WW	NIC	B	RICOH SP 200N
	WW	NIC	B	RICOH SP 201N

WW: World Wide, CHN: China, I/F: USB or NIC (Network)

Reissued: 09-Dec-16

Model: OP-MF1(3IN1) (WW)

Date: 10-Apr-13

No.: RM133009b

Reissued: 09-Dec-16

Model: OP-MF1(4IN1) (WW, China)	Date: 10-Apr-13	No.: RM133010c
--	-----------------	----------------

RTB Reissue

The items in ***bold italics*** have been corrected or added.

Subject: Firmware Release Note: Controller (Type-B) for EU/Americas/Asia/China models		Prepared by:
From: 3rd Tech Service Sect., MFP/Printer Tech Service Dept.		Y. Miyamoto
Classification:	<input type="checkbox"/> Troubleshooting <input type="checkbox"/> Part information <input type="checkbox"/> Action required <input type="checkbox"/> Mechanical <input type="checkbox"/> Electrical <input type="checkbox"/> Service manual revision <input type="checkbox"/> Paper path <input type="checkbox"/> Transmit/receive <input type="checkbox"/> Retrofit information <input type="checkbox"/> Product Safety <input checked="" type="checkbox"/> Other (Firmware) <input checked="" type="checkbox"/> Tier 2	

This RTB has been issued to announce the firmware release information for the **Controller (4IN1 Type-B) for EU/Americas/Asia/China models**.

Version	Program No.	Effective Date	Availability of RFU
1.04	M1355056F	December 2016 production	Not available
1.03	M1355056E	November 2013 production	Not available
1.02	M1355056D	September 2013 production	Not available
1.00	M1355056B	1st Mass production	Not available

Note: Definition of Availability of RFU via @Remote
“Available”: The firmware can be updated via RFU or SD card.

“Not available”: The firmware can only be updated via SD card.

Version	Modified Points or Symptom Corrected
1.04	Minor bug fixed
1.03	Minor bug fixed
1.02	1. Copy image algorithm changed to improve color reproducibility. 2. Default copy mode changed from "Text/Photo" to "Text". (China model only) 3. Minor bug fixed.
1.00	1st Mass production

Firmware	Destination	I/F	Product Name	FW Type	Program No.	Current version
Controller for 4 in 1	WW	USB	RICOH SP 203SF	4in1 type-C	M1355059D	1.03
	WW	USB	RICOH SP 204SF			
	CHN	USB	RICOH SP 200SF	4in1 type-A	M1355051F	1.02
	CHN	USB	RICOH SP 200SF Q			
	CHN	USB	RICOH SP 201SF			
	CHN	USB	RICOH SP 201SF Q			
	CHN	NIC	RICOH SP 202SF	4in1 type-B	M1355056E	1.03
	WW	NIC	RICOH SP 203SFN			
	WW	NIC	RICOH SP 204SFN			
	WW	WIFI	RICOH SP 203SFNw	4in1 type-D	M1515060A	1.00
	WW	WIFI	RICOH SP 204SFNw			

WW: World Wide (Except China)

CHN: China

NIC: (Ethernet 100base-TX RJ45)

WIFI: (802.11b/g/n)

Reissued: 09-Dec-16
Model: OP-MF1(4IN1) (WW)
Date: 10-Apr-13
No.: RM133011c
RTB Reissue

The items in ***bold italics*** have been corrected or added.

Subject: Firmware Release Note: Controller (Type-C) for EU/Americas/Asia models			Prepared by:
From: 1st Tech Service Sect., MFP/Printer Tech Service Dept.			Y. Miyamoto
Classification:	<input type="checkbox"/> Troubleshooting <input type="checkbox"/> Mechanical <input type="checkbox"/> Paper path <input type="checkbox"/> Product Safety	<input type="checkbox"/> Part information <input type="checkbox"/> Electrical <input type="checkbox"/> Transmit/receive <input checked="" type="checkbox"/> Other (Firmware)	<input type="checkbox"/> Action required <input type="checkbox"/> Service manual revision <input type="checkbox"/> Retrofit information <input checked="" type="checkbox"/> Tier 2

This RTB has been issued to announce the firmware release information for the **Controller (4IN1 Type-C) for EU/Americas/Asia models.**

Version	Program No.	Effective Date	Availability of RFU
1.04	M1355059E	December 2016 production	Not available
1.03	M1355059D	November 2013 production	Not available
1.02	M1355059C	September 2013 production	Not available
1.00	M1355059A	1st Mass production	Not available

Note: Definition of Availability of RFU via @Remote
“Available”: The firmware can be updated via RFU or SD card.

“Not available”: The firmware can only be updated via SD card.

Version	Modified Points or Symptom Corrected
1.04	Minor bug fixed
1.03	Minor bug fixed
1.02	1. Copy image algorithm changed to improve color reproducibility. 2. Minor bug fixed.
1.00	1st Mass production

Firmware	Destination	I/F	Product Name	FW Type	Program No.	Current version
Controller for 4 in 1	WW	USB	RICOH SP 203SF	4in1 type-C	M1355059D	1.03
	WW	USB	RICOH SP 204SF			
	CHN	USB	RICOH SP 200SF	4in1 type-A	M1355051F	1.02
	CHN	USB	RICOH SP 200SF Q			
	CHN	USB	RICOH SP 201SF			
	CHN	USB	RICOH SP 201SF Q			
	CHN	NIC	RICOH SP 202SF	4in1 type-B	M1355056E	1.03
	WW	NIC	RICOH SP 203SFN			
	WW	NIC	RICOH SP 204SFN			
	WW	WIFI	RICOH SP 203SFNw	4in1 type-D	M1515060A	1.00
	WW	WIFI	RICOH SP 204SFNw			

WW: World Wide (Except China)

CHN: China

NIC: (Ethernet 100base-TX RJ45)

WIFI: (802.11b/g/n)

Reissued: 19-May-14

Model: OP-P1/OP-MF1(3IN1)/OP-MF1(4IN1) (WW)	Date: 10-Apr-13	No.: RM133012e
---	-----------------	----------------

RTB Reissue

The items in bold italics have been corrected or added.

Subject: Firmware Release Note: Engine for EU/Americas/Asia models		Prepared by: T. Sakakibara	
From: 3rd Tech Service Sect., MFP/Printer Tech Service Dept.			
Classification:	<input type="checkbox"/> Troubleshooting <input type="checkbox"/> Mechanical <input type="checkbox"/> Paper path <input type="checkbox"/> Product Safety	<input type="checkbox"/> Part information <input type="checkbox"/> Electrical <input type="checkbox"/> Transmit/receive <input checked="" type="checkbox"/> Other (Firmware)	<input type="checkbox"/> Action required <input type="checkbox"/> Service manual revision <input type="checkbox"/> Retrofit information <input checked="" type="checkbox"/> Tier 2

This RTB has been issued to announce the firmware release information for the **Engine for EU/Americas/Asia models**.

Version	Program No.	Effective Date	Availability of RFU
<i>W1.05:01</i>	<i>M1335452F</i>	<i>May 2014 production</i>	<i>Not available</i>
W1.04:01	M1335452E	May 2014 production	Not available
W1.03	M1335452D	November 2013 production	Not available
W1.02:01	M1335452C	October 2013 production	Not available
W1.01:01	M1335452B	April 2013 production	Not available
W1.00:01	M1335452A	1st Mass production	Not available

Note: Definition of Availability of RFU via @Remote
“Available”: The firmware can be updated via RFU or SD card.

“Not available”: The firmware can only be updated via SD card.

Version	Modified Points or Symptom Corrected
<i>W1.05:01</i>	<i>Specification change:</i> <i>1. SC542 which triggered by poor power source can be cleared by switch power OFF/ON.</i> <i>2. To prevent paper wrap around the hot roller, the paper which jammed before entering the fusing unit will not be output automatically.</i>
W1.04:01	Symptom corrected: Faint Print or creases might occur within the area of 9mm from the leading end of the 1st printed paper.
W1.03	Specification Change: 1. SC542 detection mechanism changed same as vW1.01 for preventing safety risk. 2. Minor bug fixed.
W1.02:01	Specification Change: 1. Reduce SC542(C8) which caused by transient unstable input voltage. 2. SC542(C8) which caused by unstable input voltage can be recovered by switch power OFF/ON.
W1.01:01	Symptom corrected: Rarely, machine stuck in energy save mode. (Can be recovered by switch power OFF/ON)
W1.00:01	1st Mass production

Model: OP-P1/MF1a/MF1b	Date: 17-Sep-13	No.: RM133013
-------------------------------	-----------------	---------------

Subject: CHINA: EC model & ADF 3in1 model		Prepared by: I. Soh	
From: 3rd Tech Service Sect., MFP/Printer Tech Service Dept.			
Classification:	<input type="checkbox"/> Troubleshooting <input type="checkbox"/> Mechanical <input type="checkbox"/> Paper path <input type="checkbox"/> Product Safety	<input checked="" type="checkbox"/> Part information <input type="checkbox"/> Electrical <input type="checkbox"/> Transmit/receive <input type="checkbox"/> Other ()	<input type="checkbox"/> Action required <input type="checkbox"/> Service manual revision <input type="checkbox"/> Retrofit information <input type="checkbox"/> Tier 2

OP-P1/MF1 China model:

Mainframe:

Machine code	SN	EDP	Name	FAX	Hand-Set	Scanner	ADF	Interface	AIO inter-change type	Refillable	Toner End Detection	Starter AIO yield (ISO/IEC19752)
M141-21	T50	430704	SP 200SF	Yes	Yes	Yes	No	USB	A	Yes	Yes	1k
M212-21	X06	407516	SP 200SF Q	Yes	Yes	Yes	No	USB	B	No	Yes	1k
M135-21	T47	430705	SP 201SF	Yes	Yes	Yes	Yes	USB	A	Yes	Yes	1k
M211-21	X05	407517	SP 201SF Q	Yes	Yes	Yes	Yes	USB	B	No	Yes	1k
M143-21	T52	430706	SP 202SF	Yes	Yes	Yes	Yes	USB&LAN	A	Yes	Yes	1k
M133-21	T45	430700	SP 200	No	No	No	No	USB	A	Yes	No	1k
M209-21	X07	407514	SP 200 Q	No	No	No	No	USB	B	No	No	1k
M144-21	T53	430701	SP 200N	No	No	No	No	USB&LAN	A	Yes	No	1k
M134-21	T46	430702	SP 200S	No	No	Yes	No	USB	A	Yes	No	1k
M210-21	X04	407515	SP 200S Q	No	No	Yes	No	USB	B	No	No	1k
M142-21	T51	430703	SP 201S	No	No	Yes	No	USB/LAN	A	Yes	No	1k
M191-21	T93	407479	SP 202S	No	No	Yes	Yes	USB	A	Yes	No	1k

Supply AIO cartridge:

Machine code	EDP	Product Name	Yield	Refillable
M899-01	430707	Print Cartridge SP 200C	2.6k	Yes
M899-21	407518	Print Cartridge SP 200Q	2.6k	No

OP-P1/MF1 China EC model:

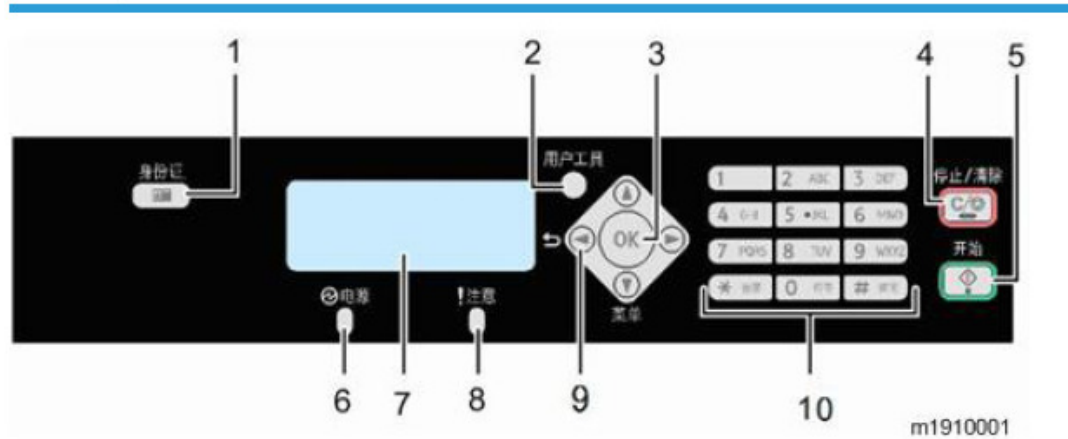
Product Name ending with "Q" is Electronic Commerce model.

- The functions are as same as the regular models.
- The service parts, drivers and firmware are fully interchangeable with the regular models.
- The only difference is that the AIO is not interchangeable.

SP202S (ADF 3in1: M19121):

SP202S is a 3in1 MF model with ADF equipped. The main board and control panel for M19121 are unique. Please refer to the Parts Catalog of M19121 for details.

M191 Operation Panel



No.	Name	No.	Name
1	[ID Card Copy] Key	6	Power Indicator
2	[User Tools] Key	7	Display Screen (LCD)
3	[OK] Key	8	Alert Indicator
4	[Stop/Clear] Key	9	Scroll Keys
5	[Start] Key	10	Number Keys

Model: OP-P1/MF1a/MF1b
Date: 17-Sep-13
No.: RM133013

Appendix:

OP-P1/MF1 Firmware

Firmware	Destination	I / F	Product Name	FW Type	Program No.	RTB No.	Current version
Controller for 4 in 1	WW	USB	RICOH SP 203SF	4in1 type-C	M1355059C	RM133011a	1.02
	WW	USB	RICOH SP 204SF				
	CHINA	USB	RICOH SP 200SF	4in1 type-A	M1355051F	RM133003b	1.02
	CHINA	USB	RICOH SP 200SF Q				
	CHINA	USB	RICOH SP 201SF				
	CHINA	USB	RICOH SP 201SF Q				
	CHINA	NIC	RICOH SP 202SF	4in1 type-B	M1355056D	RM133010a	1.02
	WW	NIC	RICOH SP 203SFN				
	WW	NIC	RICOH SP 204SFN				
	WW	WIFI	RICOH SP 203SFNw	4in1 type-D	TBR	TBR	**
	WW	WIFI	RICOH SP 204SFNw				
Controller for 3 in 1	WW	USB	RICOH SP 200S	3in1 type-D	M1345054C	RM133009	1.02
	WW	USB	RICOH SP 203S				
	CHINA	USB	RICOH SP 200S	3in1 type-A	M1345051E	RM133002	1.02
	CHINA	USB	RICOH SP 200S Q				
	CHINA	NIC	RICOH SP 201S	3in1 type-B	M1345052D	RM133007	1.02
	WW	NIC	RICOH SP 202SN	3in1 type-C	M1345053D	RM133008	1.02
	WW	NIC	RICOH SP 204SN				
	CHINA	USB	RICOH SP 202S	3in1 type-E	TBR	TBR	**
Controller for Printer	WW	USB	RICOH SP 200	Printer type-C	M1335054B	RM133006a	1.01
	CHINA	USB	RICOH SP 200	Printer type-A	M1335051D	RM133001	1.00
	CHINA	USB	RICOH SP 200 Q				
	CHINA	NIC	RICOH SP 200N	Printer type-B	M1335052C	RM133005a	1.01
	WW	NIC	RICOH SP 200N				
	WW	NIC	RICOH SP 201N				
	WW	WIFI	RICOH SP 200Nw	Printer type-D	TBR	TBR	**
	WW	WIFI	RICOH SP 201Nw				

Firmware	Destination	Program No.	RTB No.	Current ver.
Engine Firmware	All CHINA models	M1335451F	RM133004b	1.03:01
	All WW models	M1335452B	RM133012a	W1.01:01

WW: Worldwide

Reissued: 09-Dec-16

Model: OP-P1 (WW)	Date: 18-Oct-13	No.: RM133014a
-------------------	-----------------	----------------

RTB Reissue

The items in ***bold italics*** have been corrected or added.

Subject: Firmware Release Note: Controller (Printer Type-D) for EU/Americas/Asia models		Prepared by: I. Soh	
From: 3rd Tech Service Sect., MFP/Printer Tech Service Dept.			
Classification:	<input type="checkbox"/> Troubleshooting <input type="checkbox"/> Mechanical <input type="checkbox"/> Paper path <input type="checkbox"/> Product Safety	<input type="checkbox"/> Part information <input type="checkbox"/> Electrical <input type="checkbox"/> Transmit/receive <input checked="" type="checkbox"/> Other (Firmware)	<input type="checkbox"/> Action required <input type="checkbox"/> Service manual revision <input type="checkbox"/> Retrofit information <input checked="" type="checkbox"/> Tier 2

This RTB has been issued to announce the firmware release information for the **Controller (Printer Type-D) for EU/Americas/Asia models**.

Version	Program No.	Effective Date	Availability of RFU
<i>1.01</i>	<i>M1465056B</i>	<i>December 2016 production</i>	<i>Not available</i>
1.00	M1465056A	1st Mass production	Not available

Note: Definition of Availability of RFU via @Remote
"Available": The firmware can be updated via RFU or SD card.

"Not available": The firmware can only be updated via SD card.

Version	Modified Points or Symptom Corrected
<i>1.01</i>	<i>Minor bug fixed</i>
1.00	1st Mass production

Firmware	Destination	I/F	Product Name	FW Type	Program No.	Current version
Controller for Printer	WW	USB	RICOH SP 200	Printer type-C	M1335054B	1.01
	CHN	USB	RICOH SP 200	Printer type-A	M1335051D	1.00
	CHN	USB	RICOH SP 200 Q			
	CHN	NIC	RICOH SP 200N	Printer type-B	M1335052C	1.01
	WW	NIC	RICOH SP 200N			
	WW	NIC	RICOH SP 201N			
	WW	WIFI	RICOH SP 200Nw	Printer type-D	M1465056A	1.00
	WW	WIFI	RICOH SP 201Nw			

WW: World Wide (Except China)

CHN: China

NIC: (Ethernet 100base-TX RJ45)

WIFI: (802.11b/g/n)

Reissued: 09-Dec-16

Model: OP-MF1(4IN1) (WW)	Date: 18-Oct-13	No.: RM133015b
--------------------------	-----------------	----------------

RTB Reissue

The items in ***bold italics*** have been corrected or added.

Subject: Firmware Release Note: Controller (Type-D) for EU/Americas/Asia models		Prepared by:
From: 1st Tech Service Sect., MFP/Printer Tech Service Dept.		Y. Miyamoto
Classification:	<input type="checkbox"/> Troubleshooting <input type="checkbox"/> Mechanical <input type="checkbox"/> Paper path <input type="checkbox"/> Product Safety	<input type="checkbox"/> Part information <input type="checkbox"/> Electrical <input type="checkbox"/> Transmit/receive <input checked="" type="checkbox"/> Other (Firmware)
	<input type="checkbox"/> Action required <input type="checkbox"/> Service manual revision <input type="checkbox"/> Retrofit information <input checked="" type="checkbox"/> Tier 2	

This RTB has been issued to announce the firmware release information for the **Controller (4in1 Type-D) for EU/Americas/Asia models**.

Version	Program No.	Effective Date	Availability of RFU
1.03	M1515060C	December 2016 production	Not available
1.02	M1515060B	November 2013 production	Not available
1.00	M1515060A	1st Mass production	Not available

Note: Definition of Availability of RFU via @Remote
"Available": The firmware can be updated via RFU or SD card.
"Not available": The firmware can only be updated via SD card.

Version	Modified Points or Symptom Corrected
1.03	Minor bug fixed
1.02	Symptom corrected: In rare cases of copy mode, it may takes nearly 20 seconds until the machine starts to scan after start key is pressed.
1.00	1st Mass production

Firmware	Destination	I/F	Product Name	FW Type	Program No.	Current version
Controller for 4 in 1	WW	USB	RICOH SP 203SF	4in1 type-C	M1355059C	1.02
	WW	USB	RICOH SP 204SF			
	CHN	USB	RICOH SP 200SF	4in1 type-A	M1355051F	1.02
	CHN	USB	RICOH SP 200SF Q			
	CHN	USB	RICOH SP 201SF			
	CHN	USB	RICOH SP 201SF Q			
	CHN	NIC	RICOH SP 202SF	4in1 type-B	M1355056D	1.02
	WW	NIC	RICOH SP 203SFN			
	WW	NIC	RICOH SP 204SFN			
	WW	WIFI	RICOH SP 203SFNw	4in1 type-D	M1515060A	1.00
	WW	WIFI	RICOH SP 204SFNw			

WW: World Wide (Except China)

CHN: China

NIC: (Ethernet 100base-TX RJ45)

WIFI: (802.11b/g/n)

Reissued: 09-Dec-16

Model: OP-MF1(3IN1) (CHN)	Date: 23-Oct-13	No.: RM133016a
---------------------------	-----------------	----------------

RTB Reissue

The items in ***bold italics*** have been corrected or added.

Subject: Firmware Release Note: Controller (3in1 Type-E) for China models		Prepared by:
From: 1st Tech Service Sect., MFP/Printer Tech Service Dept.		Y. Miyamoto
Classification:	<input type="checkbox"/> Troubleshooting <input type="checkbox"/> Mechanical <input type="checkbox"/> Paper path <input type="checkbox"/> Product Safety	<input type="checkbox"/> Part information <input type="checkbox"/> Electrical <input type="checkbox"/> Transmit/receive <input checked="" type="checkbox"/> Other (Firmware)
		<input type="checkbox"/> Action required <input type="checkbox"/> Service manual revision <input type="checkbox"/> Retrofit information <input checked="" type="checkbox"/> Tier 2

This RTB has been issued to announce the firmware release information for the **Controller (3in1 Type-E) for China models**.

Version	Program No.	Effective Date	Availability of RFU
<i>1.01</i>	<i>M1345055B</i>	<i>December 2016 production</i>	<i>Not available</i>
1.00	M1345055A	1st Mass production	Not available

Note: Definition of Availability of RFU via @Remote
"Available": The firmware can be updated via RFU or SD card.

"Not available": The firmware can only be updated via SD card.

Version	Modified Points or Symptom Corrected
<i>1.01</i>	<i>Minor bug fixed</i>
1.00	1st Mass production

Firmware	Destination	I/F	Product Name	FW Type	Program No.	Current version
Controller for 3 in 1	WW	USB	RICOH SP 200S	3in1 type-D	M1345054C	1.02
	WW	USB	RICOH SP 203S			
	CHN	USB	RICOH SP 200S	3in1 type-A	M1345051E	1.02
	CHN	USB	RICOH SP 200S Q			
	CHN	NIC	RICOH SP 201S	3in1 type-B	M1345052D	1.02
	WW	NIC	RICOH SP 202SN	3in1 type-C	M1345053D	1.02
	WW	NIC	RICOH SP 204SN			
	CHN	USB	RICOH SP 202S	3in1 type-E	M1345055A	1.00

WW: World Wide (Except China)

CHN: China

NIC: (Ethernet 100base-TX RJ45)

Model: OP-P1/MF1a/MF1b (Refillable model)

Date: 18-Sep-14

No.: RM133017

Subject: Used toner tank cap Abolished

Prepared by: Takuma. Sakakibara

From: 3rd Tech Service Sect., MFP/P Tech Service Dept.

Classification:

☐ Troubleshooting

☒ Part information

☐ Action required

☐ Mechanical

☐ Electrical

☐ Service manual revision

☐ Paper path

☐ Transmit/receive

☐ Retrofit information

☐ Product Safety

☐ Other ()

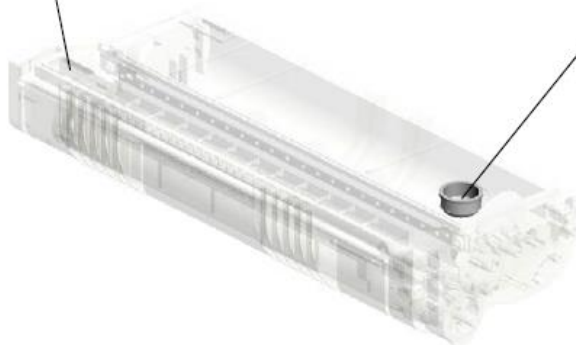
☐ Tier 2

OP-P1/MF1 toner refill cartridge:

CAP:USED TONER (M1013651) has been abolished since the cartridge doesn't use the toner port anymore.



1.G0113941
CAP:TONER HOPPER



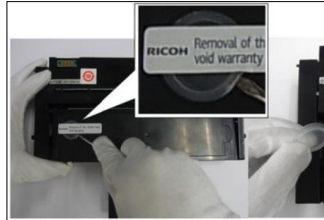
Toner refill procedure:



1. Scissors
2. Funnel
3. Flathead(-) screw driver

Filling the AIO with New Toner

1. Remove the round cap of the toner supply tank with a screwdriver.



2. Use scissors to cut off one small part of a corner of the toner pack as shown below. The cut should be about 10 to 16 mm long (about 1/2 in.).

< Important >

The cut must be small. Cutting large a hole will cause toner to scatter.



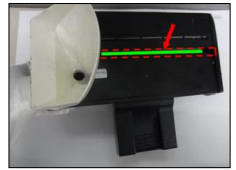
3. Raise the end of the AIO about 30 degrees by placing something under the toner supply tank as shown below.
4. Insert the tip of the funnel in the port of the toner supply tank.



< Important >

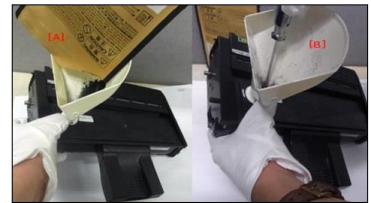
You must hold the funnel to prevent the tip of the funnel from touching and damaging components inside the AIO.

5. Work carefully. Never allow toner to fall into the open slot where the green surface of the drum is exposed.



6. Slowly pour the toner from the pack [A] into the mouth of the funnel.

- Pour the toner slowly to prevent it from clumping the neck of the funnel.
- If the toner flow stops, use the tip of the screwdriver [B] to stir the toner gently so it falls through the neck of the funnel.



7. Re-attach the round cap of the toner supply tank.



4in1 MF: After Refilling

Set [User Tools] > Toner End Option to Continue Printing. The remaining toner level will not be detected anymore.