

**Digital B&W Copiers**  
**(M144-21)**  
**Parts Catalog**

**Parts change information sample**

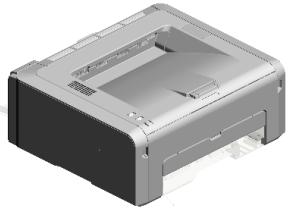
 **Add**

 **Update**

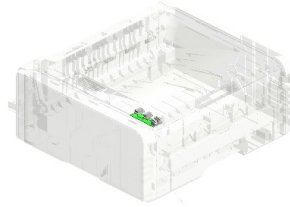
 **Delete**

Model	Product Code	PC Style
Digital Copier	M142/M143/144 M145/M147/M148/M149/M150 M162/M163/M165/M166/M167/M168	3D

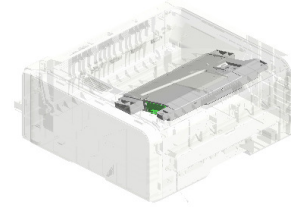
# Unit All



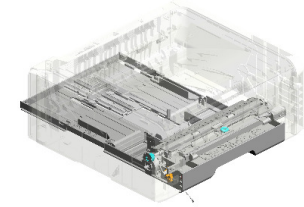
U001  
EXTERIOR



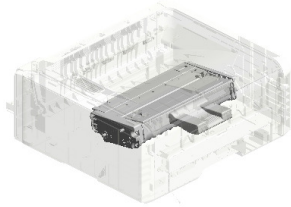
U002  
OPERATION



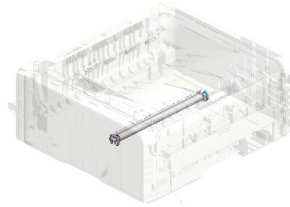
U003  
LASER UNIT



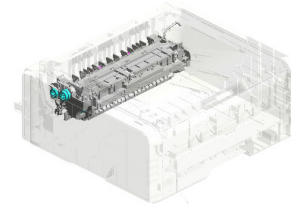
U004  
PAPER FEED



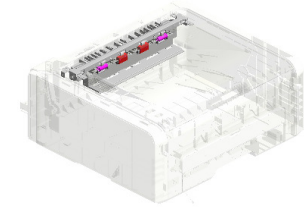
U005  
PCU



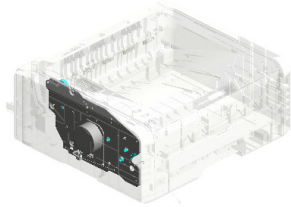
U006  
TRANSFER/SEPARATION



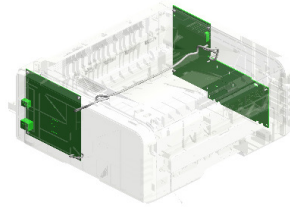
U007  
FUSING



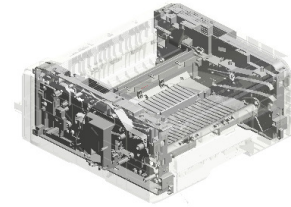
U008  
PAPER EXIT



U009  
MAIN DRIVE

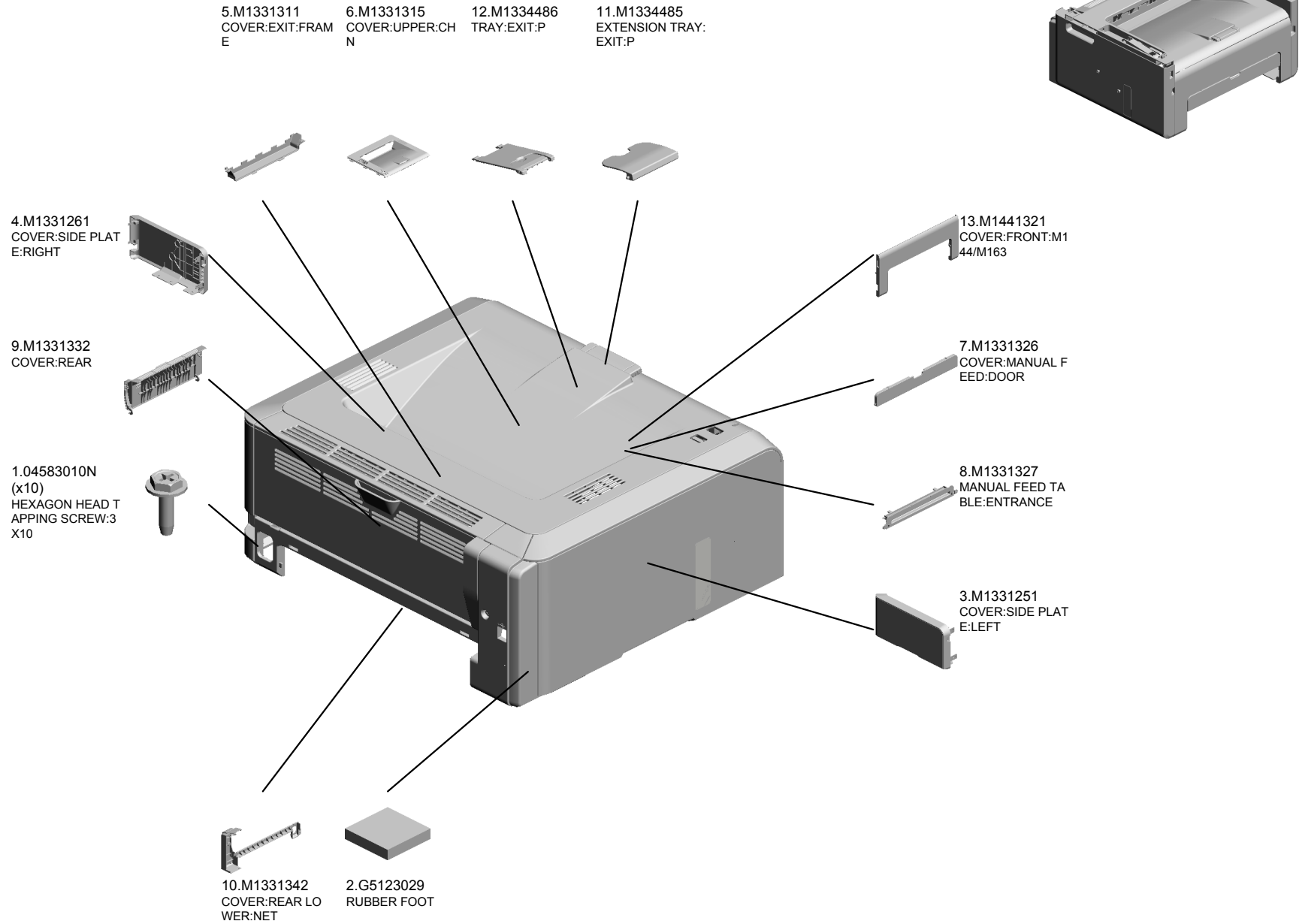


U010  
ELECTRICAL



U011  
MAIN FRAME

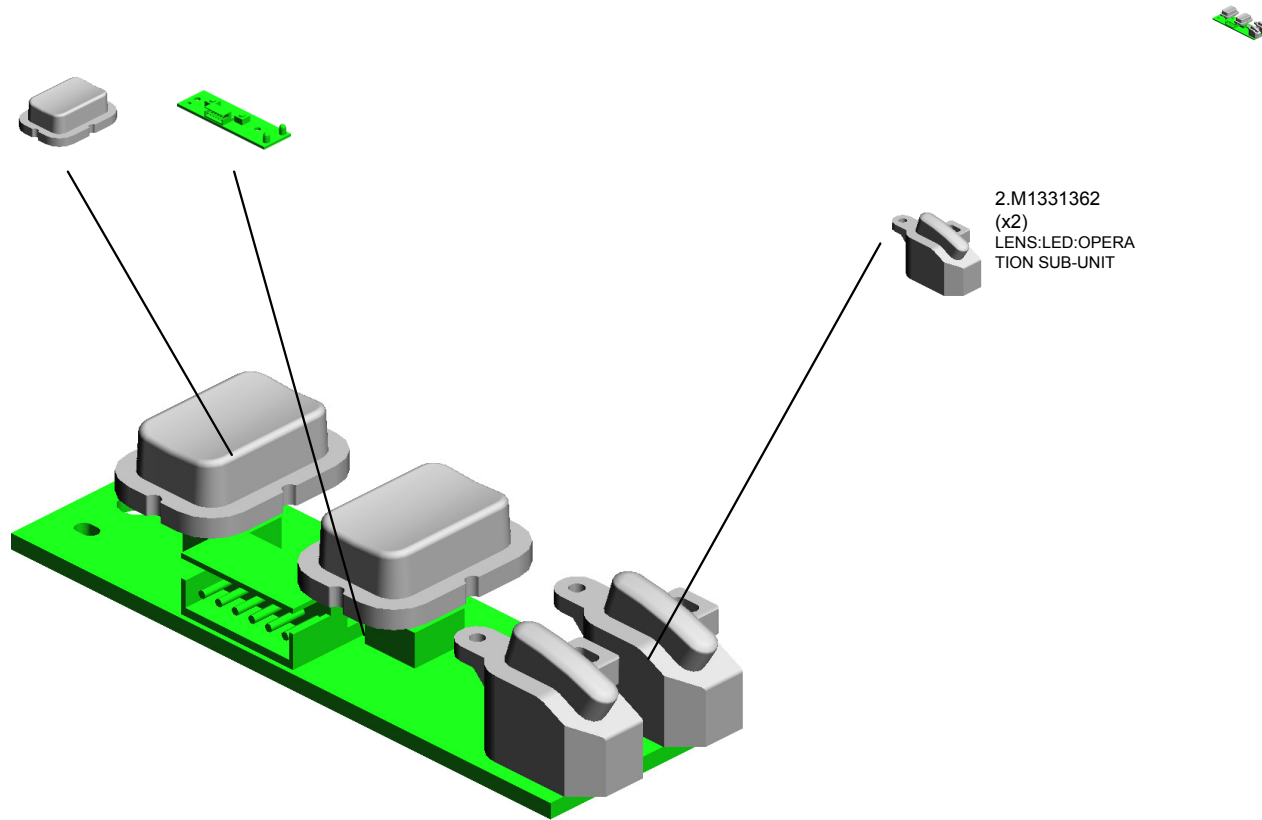
# U001 EXTERIOR



# U002 OPERATION

1.M1331352  
(x2)  
KEY:OPERATION S  
UB-UNIT

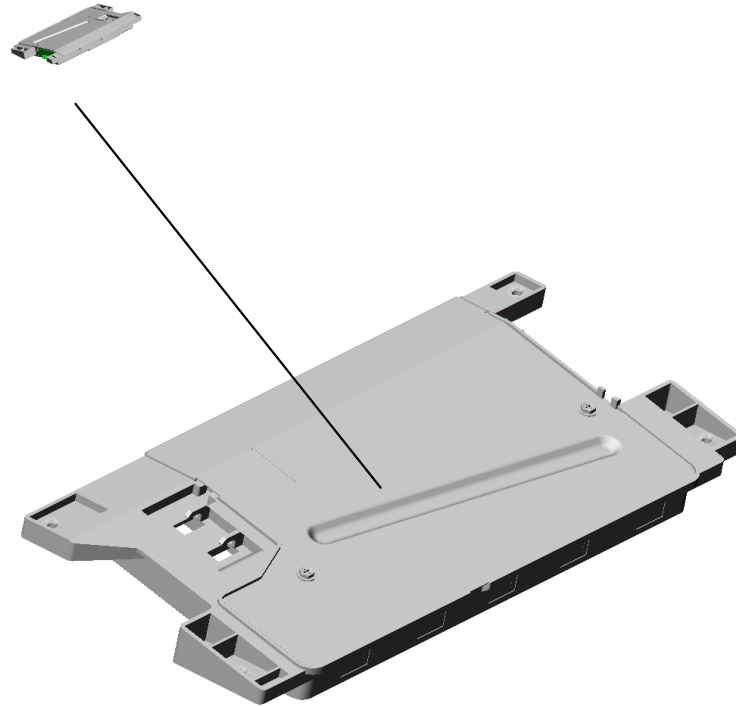
3.M1335063  
PCB:OPU



2.M1331362  
(x2)  
LENS:LED:OPERA  
TION SUB-UNIT

# U003.LASER UNIT

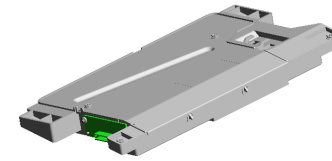
U003 S001  
M1331850  
OPTICAL WRITING UNIT



U001	U002	U003	U004	U005	U006	U007	U008	U009	U010	U011
------	------	------	------	------	------	------	------	------	------	------

U003  
LASER UNIT

1.04583010N  
(x4)  
HEXAGON HEAD TAPPING SCREW:3  
X10

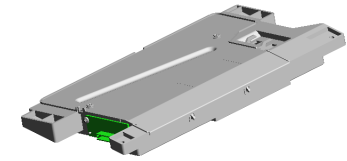


U001	U002	U003	U004	U005	U006	U007	U008	U009	U010	U011
------	------	------	------	------	------	------	------	------	------	------



U003\_S001  
OPTICAL WRITING UNIT

1.04583010N  
(x2)  
HEXAGON HEAD TAPPING SCREW:3  
X10

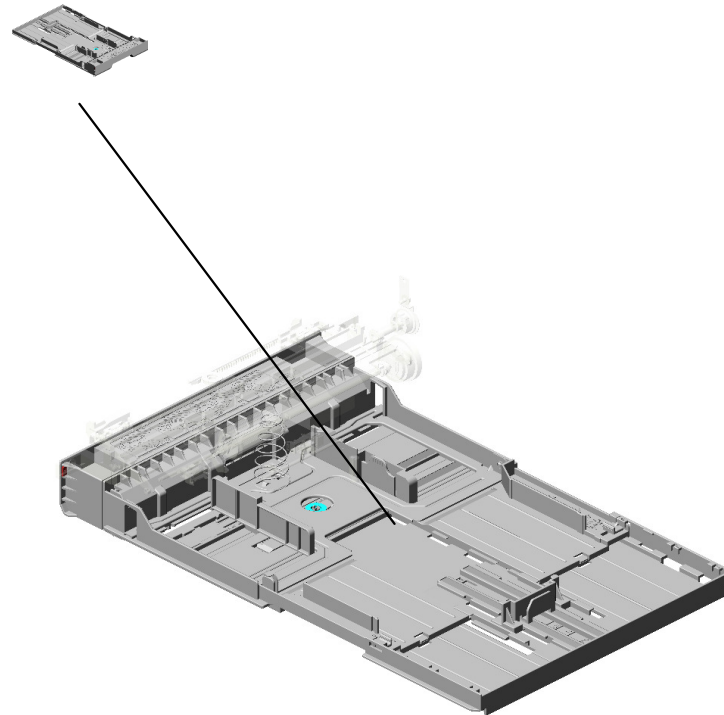


2.M1331850  
OPTICAL WRITING  
UNIT

U001	U002	U003	U004	U005	U006	U007	U008	U009	U010	U011
------	------	------	------	------	------	------	------	------	------	------

# U004.PAPER FEED

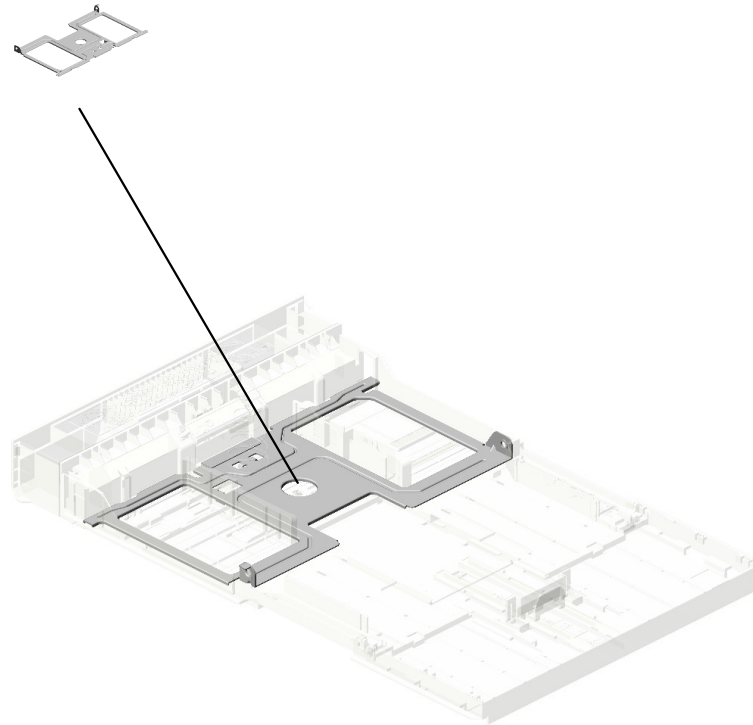
U004 S001  
M1332501  
PAPER TRAY:ASSY



U001	U002	U003	U004	U005	U006	U007	U008	U009	U010	U011
------	------	------	------	------	------	------	------	------	------	------

# U004\_S001.PAPER TRAY:ASS'Y

U004 S001 S001  
M1332610  
TRAY BOTTOM PLATE



U001	U002	U003	U004	U005	U006	U007	U008	U009	U010	U011
------	------	------	------	------	------	------	------	------	------	------

# U004 PAPER FEED

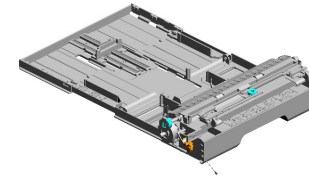
8.G8003133  
SIDE FENCE GEAR

11.M0124488  
(x2)  
BUSHING:DIA6XDI  
A10X6

7.G0201160  
(x2)  
SNAP RING

33.M1332741  
GUIDE PLATE:CON  
NECTING

34.M1332742  
TRANSPORT ROLL  
ER:CONNECTING



12.M0134622  
(x2)  
EXIT ROLLER:DUP  
LEX

4.08050089  
(x2)  
RETAINING RING -  
M4

16.M1332550  
(x2)  
BUSHING:FLANGE  
TYPE:DIA6

29.M1332732  
FEELER:PAPER E  
ND SENSOR:PAPE  
R FEED

6.AW020198  
(x3)  
PHOTOINTERRUP  
TOR:LG2A14NL1

10.M0122631  
CLOTH:EARTH:PA  
PER FEED

13.M0134623  
(x2)  
SPRING:EXIT

35.M1332743  
FEELER:REGISTR  
ATION SENSOR

31.M1332735  
FILM:PAPER FEED

32.M1332737  
SHAFT:FEED

1.04513006N  
TAPPING SCREW -  
3X6

14.M1014452  
GEAR:EXIT ROLLE  
R:PAPER EXIT UNI  
T

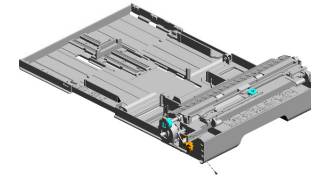
2.04583010N  
(x2)  
HEXAGON HEAD T  
APPING SCREW:3  
X10

3.07200040E  
RETAINING RING -  
M4

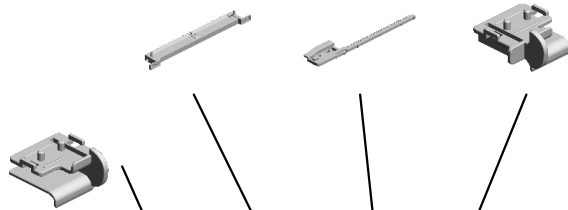
30.M1332734  
ELECTROMAGNET  
IC CLUTCH:PAPER  
FEED

# U004 PAPER FEED

36.M1332750 GUIDE PLATE:MAN  
UAL FEED:ASSY  
39.M1332754 (x2)  
RACK:SIDE FENCE  
37.M1332752 SIDE FENCE:MAN  
UAL FEED:LEFT

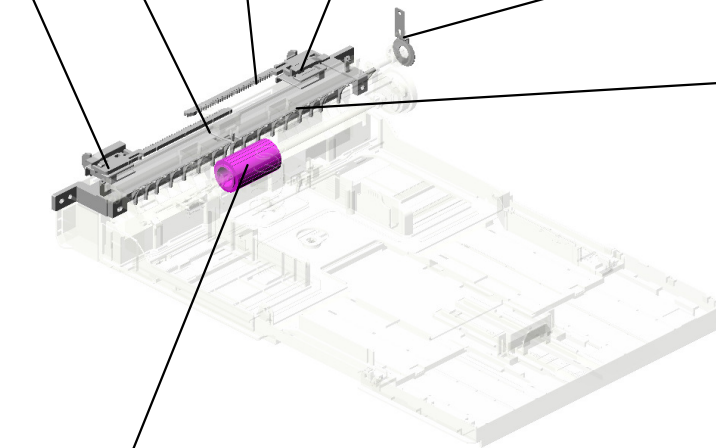


38.M1332753  
SIDE FENCE:MAN  
UAL FEED:RIGHT

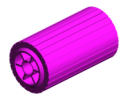


42.M1332762  
GROUND PLATE:R  
OLLER:CONNECTI  
NG

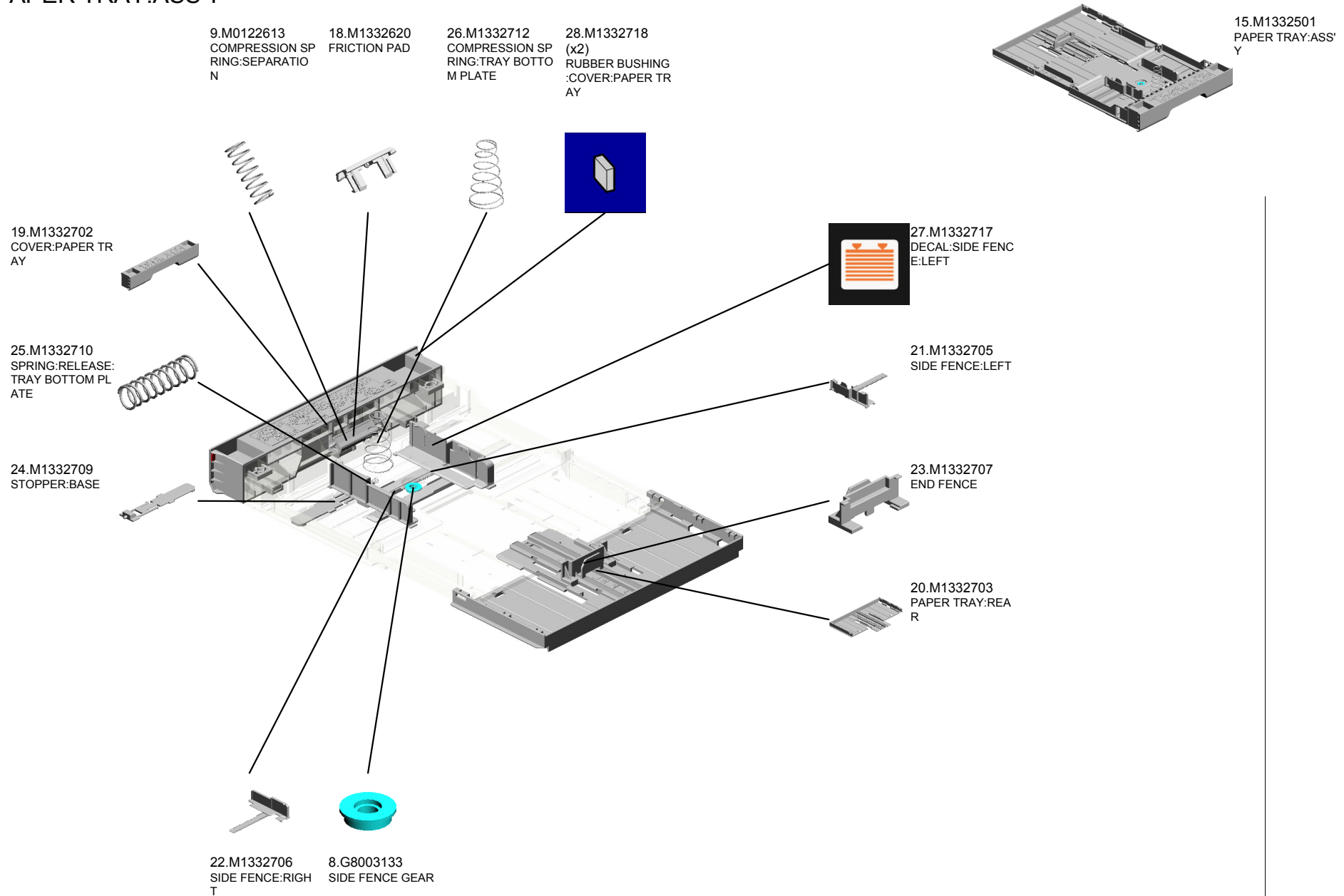
40.M1332755  
FEELER-MANUAL  
FEED SENSOR



41.M1332759  
PAPER FEED ROL  
LER

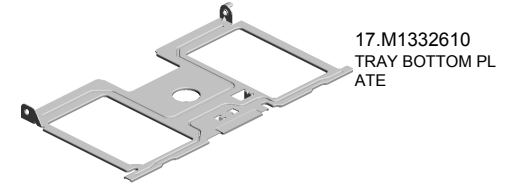
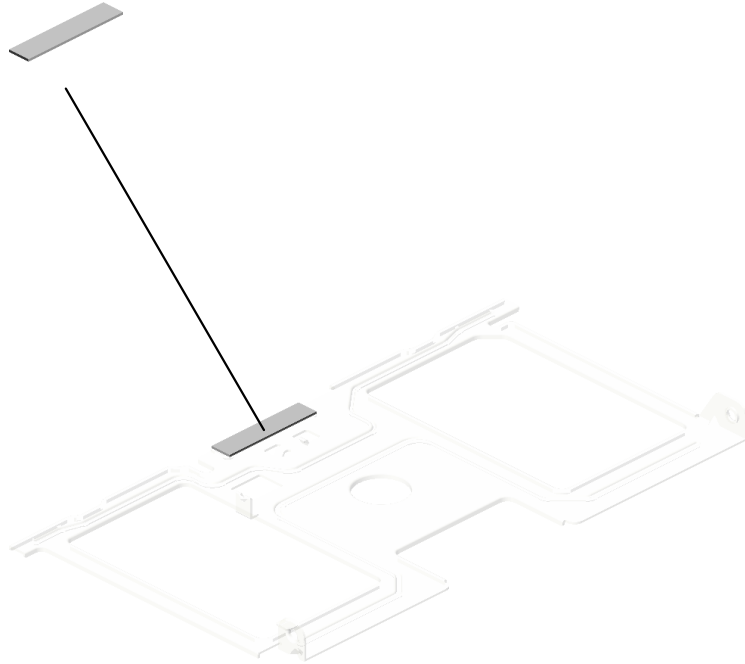


U004\_S001  
PAPER TRAY:ASS'Y



U004\_S001\_S001  
TRAY BOTTOM PLATE

5.52152713  
BOTTOM PLATE P  
AD

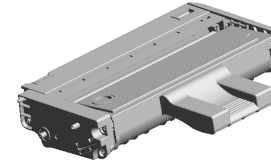


17.M1332610  
TRAY BOTTOM PL  
ATE

U001	U002	U003	U004	U005	U006	U007	U008	U009	U010	U011
------	------	------	------	------	------	------	------	------	------	------

U005  
PCU

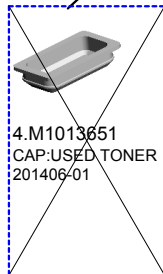
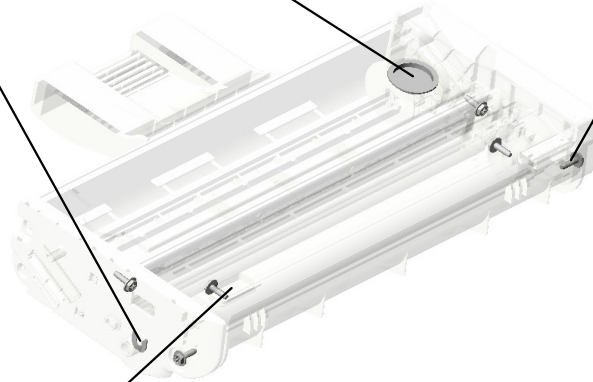
3.G0113941  
CAP:TONER HOPPER



2.08050089  
RETAINING RING -  
M4



1.04583010N  
(x6)  
HEXAGON HEAD T  
APPING SCREW:3  
X10



4.M1013651  
CAP:USED TONER  
201406-01

U001	U002	U003	U004	<b>U005</b>	U006	U007	U008	U009	U010	U011
------	------	------	------	-------------	------	------	------	------	------	------

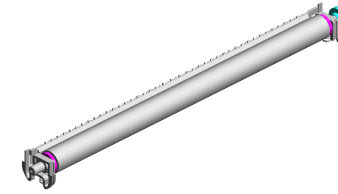


# U006 TRANSFER/SEPARATION

4.M1336259  
(x2)  
ROLLER:POSITION  
ING:TRANSFER R  
OLLER

1.M1336201  
SEPARATION UNIT  
:ASS'Y

2.M1336250  
TRANSFER ROLLE  
R



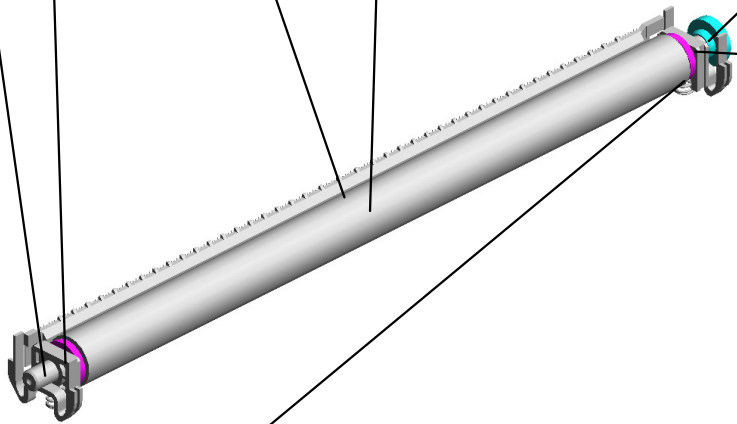
5.M1336262  
BUSHING:TRANSF  
ER ROLLER:RIGHT



3.M1336254  
GEAR:TRANSFER  
ROLLER



6.M1336263  
BUSHING:TRANSF  
ER ROLLER:LEFT



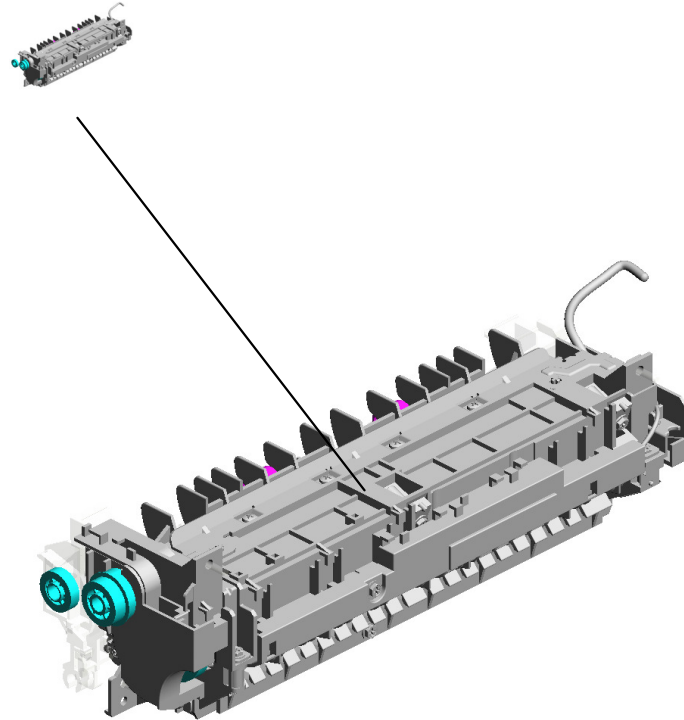
7.M1336264  
(x2)  
SPRING:TRANSFE  
R ROLLER



U001	U002	U003	U004	U005	U006	U007	U008	U009	U010	U011
------	------	------	------	------	------	------	------	------	------	------

# U007.FUSING

U007 S001  
M1354001  
FUSING UNIT:CHN



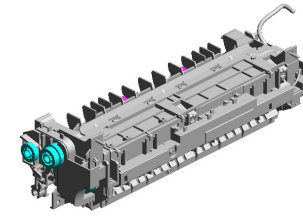
U001	U002	U003	U004	U005	U006	U007	U008	U009	U010	U011
------	------	------	------	------	------	------	------	------	------	------

# U007 FUSING

31.M1334240 EXIT ROLLER:STR  
AIGHT

21.M1334220 COIL SPRING:FEE  
LER:EXIT

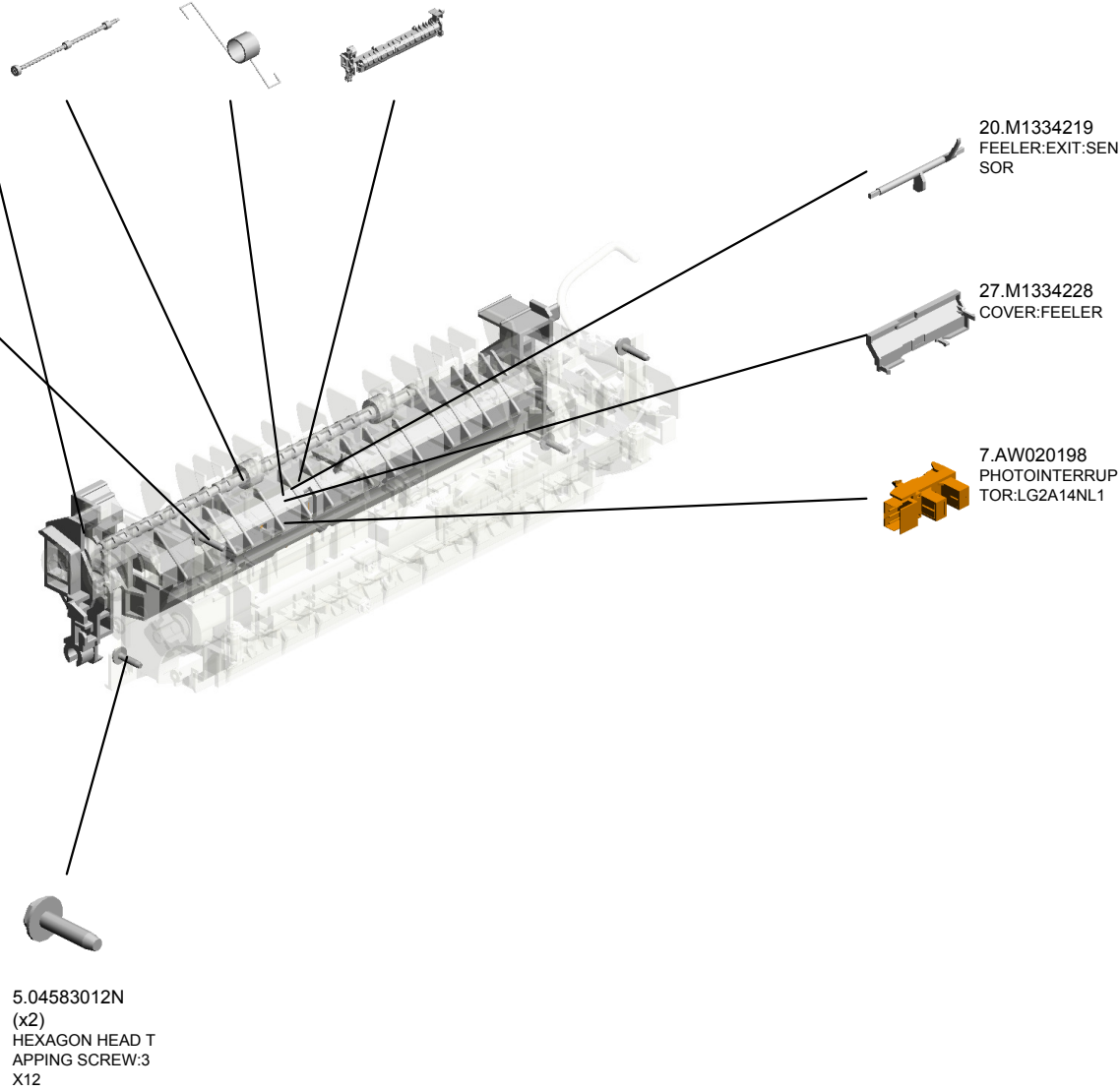
17.M1334216 GUIDE PLATE:STR  
AIGHT



37.M1334254  
DECAL:WARNING (HIGH TEMPERATU  
RE):REAR RART



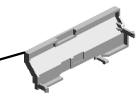
2.04503014N  
(x2)  
TAPPING SCREW:  
M3X14



20.M1334219  
FEELER:EXIT:SEN  
SOR



27.M1334228  
COVER:FEELER



7.AW020198  
PHOTOINTERRUP  
TOR:LG2A14NL1



5.04583012N  
(x2)  
HEXAGON HEAD T  
APPING SCREW:3  
X12



U001	U002	U003	U004	U005	U006	U007	U008	U009	U010	U011
------	------	------	------	------	------	------	------	------	------	------

# U007\_S001 FUSING UNIT:CHN

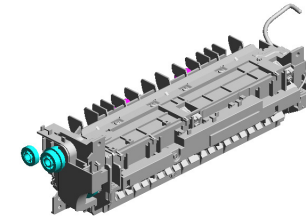
3.04523014N  
(x4)  
BINDING SELF-TAPPING SCREW:M3 X14

23.M1334223  
(x3)  
TENSION SPRING: PICKOFF PAWL

22.M1334221  
(x3)  
STRIPPER PAWLS

14.M1334204  
PRESSURE ROLLER: DIA25

9.M1014203  
HOT ROLLER



46.M1354001  
FUSING UNIT:CHN

15.M1334208  
(x2)  
PLAIN SHAFT BEARING RING:HOT ROLLER

13.M1014235  
RETAINING RINGS -C:HOT ROLLER LEFT

10.M1014210  
GEAR:HOT ROLLER

11.M1014214  
(x2)  
PLAIN SHAFT BEARING RING:PRESSURE ROLLER

19.M1334218  
(x2)  
LEVER:PRESSURE

16.M1334211  
HEATER:700W:220V:INFRARED

18.M1334217  
FUSING ENTRANCE GUIDE PLATE

1.04503012N  
(x2)  
TAPPING SCREW: 3X12

24.M1334225  
FUSING ENTRANCE GUIDE PLATE: UPPER

8.AW110101  
THERMOSTAT:LOWER

25.M1334226  
FLAT NUT:HEATER

12.M1014222  
RETAINING RINGS -C:HOT ROLLER RIGHT

26.M1334227  
GROUND PLATE:FUSING UNIT

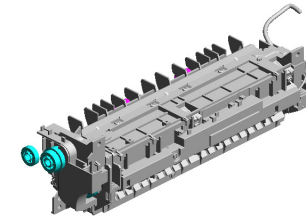
4.04583010N  
(x7)  
HEXAGON HEAD TAPPING SCREW:3 X10

6.08046127  
(x4)  
HEXAGONAL BOLT -DOUBLE SCREW: M3X8

U001 U002 U003 U004 U005 U006 U007 U008 U009 U010 U011

U007\_S001  
FUSING UNIT:CHN

44.M1334265 SHEET:PRESSURE  
RELEASE:LEFT  
42.M1334263 SHEET:HOOK:LEF  
T  
40.M1334261 HOOK:PRESSURE:  
LEFT  
33.M1334243  
(x2)  
EXIT ROLLER:FUSI  
NG



46.M1354001  
FUSING UNIT:CHN

39.M1334258  
GEAR:CONNECTIN  
G:STRAIGHT



38.M1334257  
GEAR:DRIVE:STRA  
IGHT



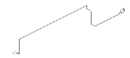
28.M1334229  
LEVER:PRESSURE  
:LEFT



30.M1334231  
(x2)  
TENSION SPRING:  
FUSING:PRESSUR  
E



34.M1334244  
ELECTRODE:LEFT



35.M1334245  
(x2)  
SPRING:EXIT ROL  
LER:FUSING



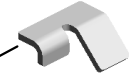
32.M1334241  
HOUSING:THERM  
OSTAT



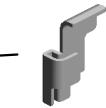
36.M1334248  
THERMISTOR



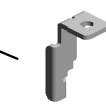
45.M1334266  
SHEET:PRESSURE  
RELEASE:RIGHT



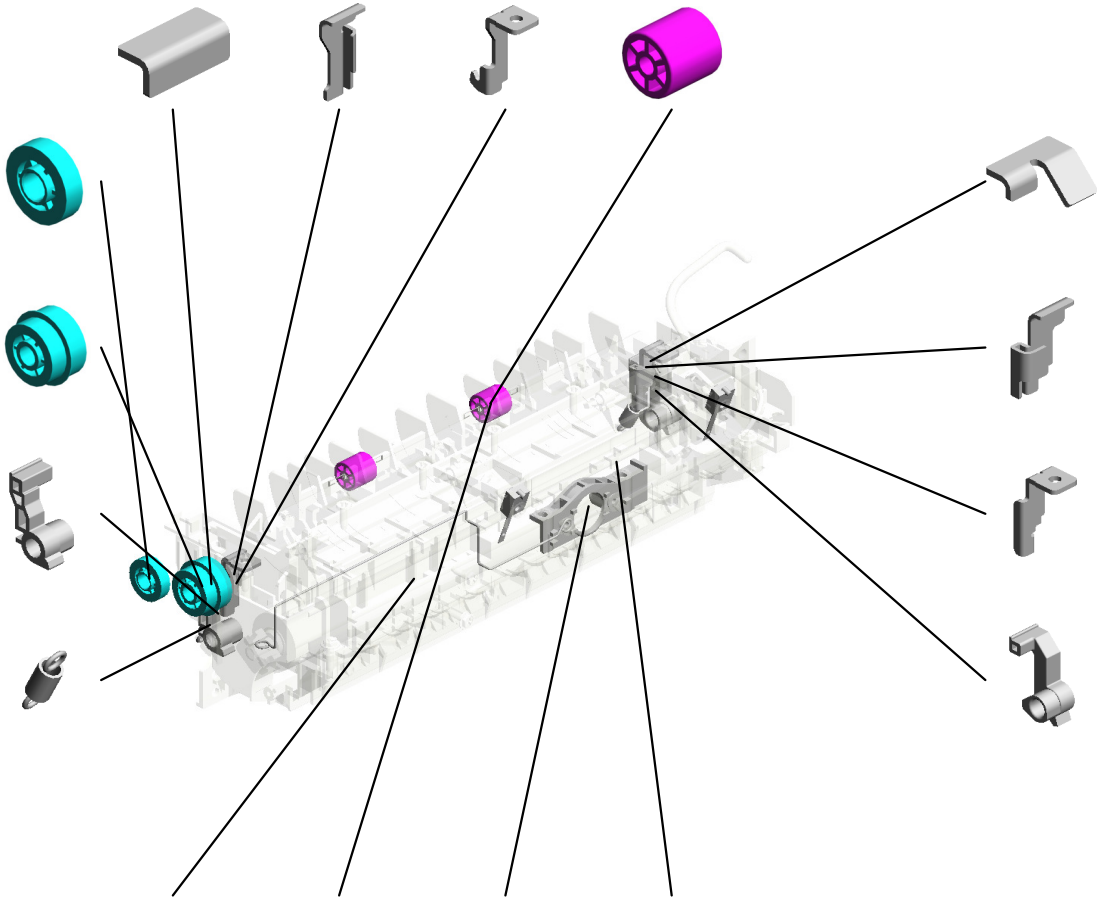
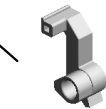
43.M1334264  
SHEET:HOOK:RIG  
HT



41.M1334262  
HOOK:PRESSURE:  
RIGHT



29.M1334230  
LEVER:PRESSURE  
:RIGHT

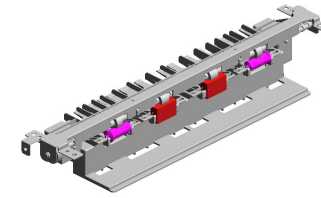


# U008 PAPER EXIT

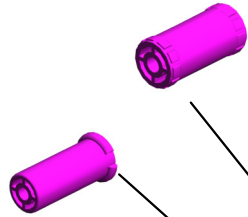
5.M1334457  
(x2)  
EXIT ROLLER

9.M1334467  
GUIDE PLATE:EXIT  
:LOWER

3.M1334451  
EXIT ROLLER:PAP  
ER EXIT UNIT



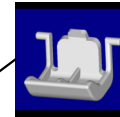
6.M1334459  
(x2)  
EXIT ROLLER



8.M1334466  
GUIDE PLATE:EXIT  
:UPPER



7.M1334465  
(x2)  
PLATE:EXIT



4.M1334453  
(x2)  
PLAIN SHAFT BEA  
RING:EXIT



1.04513008N  
(x2)  
TAPPING SCREW -  
M3X8



2.M0124454  
(x4)  
SPRING:EXIT ROL  
LER:EXIT



U001	U002	U003	U004	U005	U006	U007	U008	U009	U010	U011
------	------	------	------	------	------	------	------	------	------	------

# U009 MAIN DRIVE

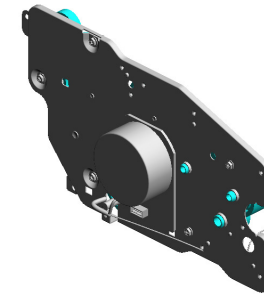
1.03530030N  
(x3)  
SCREW:M3X3

5.M1331118  
GEAR:DRIVE:FUSI  
NG:NO.1

6.M1331119  
GEAR:DRIVE:FUSI  
NG:NO.2

2.04583010N  
(x5)  
HEXAGON HEAD T  
APPING SCREW:3  
X10

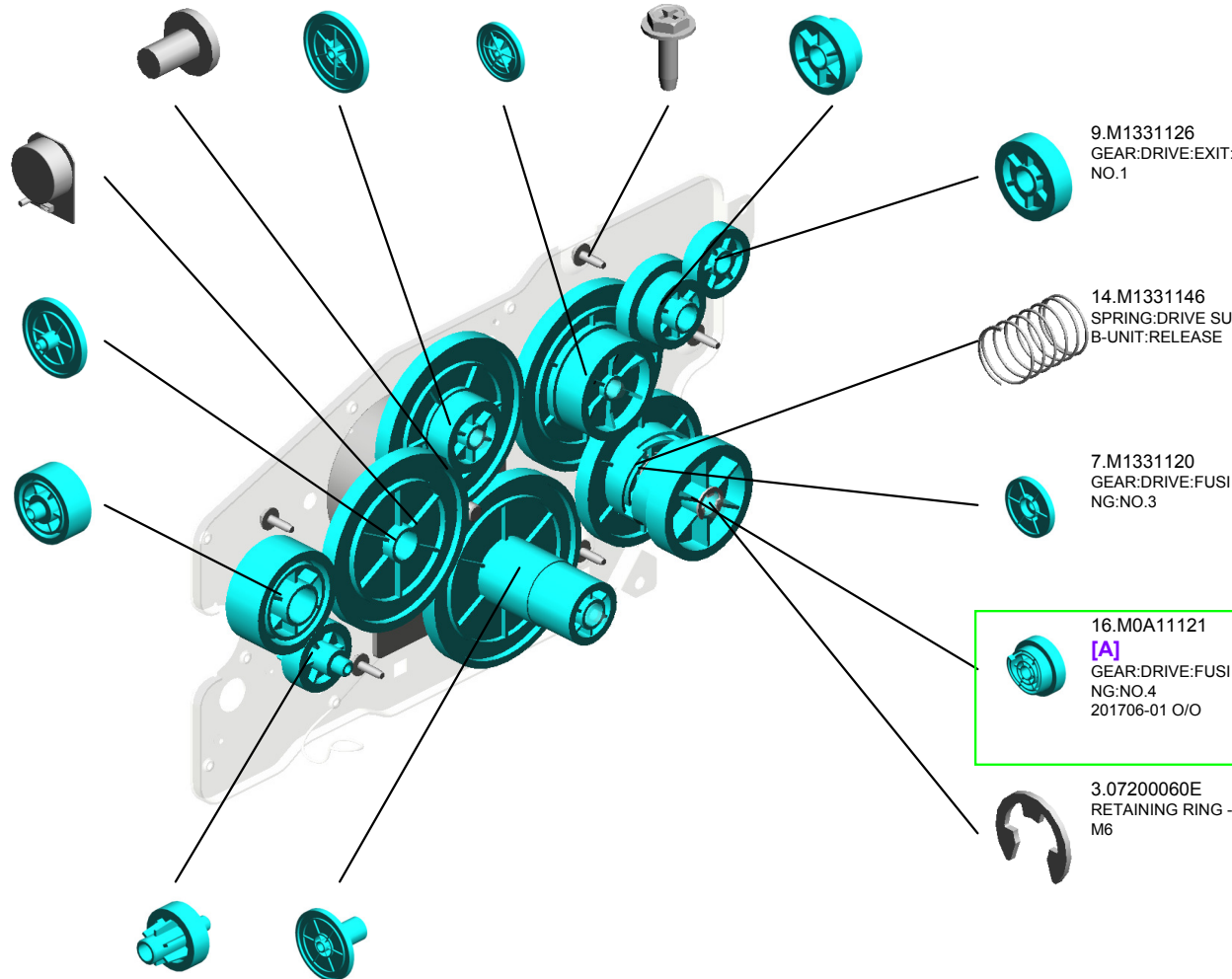
10.M1331127  
GEAR:DRIVE:EXIT:  
NO.2



15.M1331155  
DC BRUSHLESS M  
OTOR:20W

11.M1331131  
GEAR:DRIVE:PAPE  
R FEED:NO.1

12.M1331132  
GEAR:DRIVE:PAPE  
R FEED:NO.2



13.M1331133  
GEAR:DRIVE:PAPE  
R FEED:NO.3

4.M1331117  
GEAR:DRIVE:DRU  
M

9.M1331126  
GEAR:DRIVE:EXIT:  
NO.1

14.M1331146  
SPRING:DRIVE SU  
B-UNIT:RELEASE

7.M1331120  
GEAR:DRIVE:FUSI  
NG:NO.3

16.M0A11121  
[A]  
GEAR:DRIVE:FUSI  
NG:NO.4  
201706-01 O/O

3.07200060E  
RETAINING RING -  
M6

M1331121  
[A]  
GEAR:DRIVE:FUSI  
NG:NO.4  
201706-01 O/O

# U010 ELECTRICAL

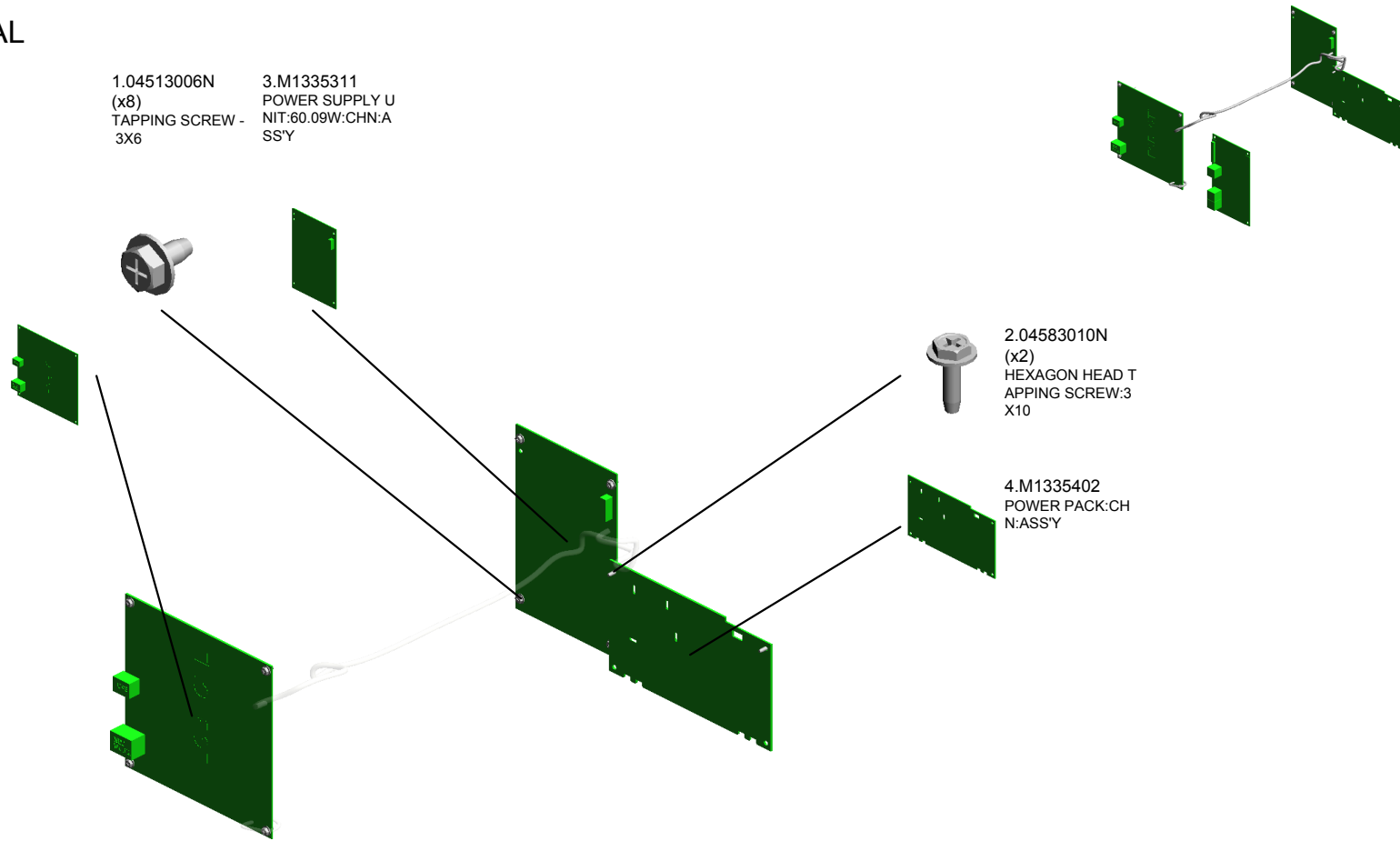
1.04513006N  
(x8)  
TAPPING SCREW -  
3X6

3.M1335311  
POWER SUPPLY U  
NIT:60.09W:CHN:A  
SS'Y

5.M1445050  
PCB:ECBCTL:CHN:  
ASS'Y

2.04583010N  
(x2)  
HEXAGON HEAD T  
APPING SCREW:3  
X10

4.M1335402  
POWER PACK:CH  
N:ASS'Y



U001	U002	U003	U004	U005	U006	U007	U008	U009	U010	U011
------	------	------	------	------	------	------	------	------	------	------



# U011 MAIN FRAME

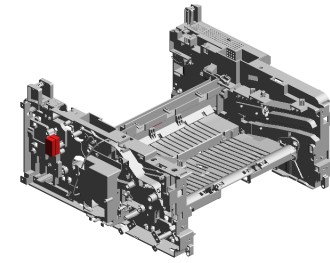
2.04513006N  
(x5)  
TAPPING SCREW -  
3X6

8.M1331061  
COIL SPRING:DISC  
HARGE:ELECTRO  
DE PLATE

7.M0124699  
DECAL:WARNING (   
HIGH TEMPERATU  
RE):FRONT

17.M1331094  
COIL SPRING:RIG  
HT:EXIT

11.M1331064  
PAPER TRAY:DISC  
HARGE



16.M1331093  
COIL SPRING:LEFT  
:EXIT

15.M1331090  
SAFETY SWITCH:A  
RM

1.04503020N  
TAPPING SCREW:  
M3X20

10.M1331063  
COIL SPRING:DISC  
HARGE:AIO

5.G5123029  
(x3)  
RUBBER FOOT

4.12042612  
(x2)  
MICRO SWITCH:D3  
V-16506-3C25

9.M1331062  
ELECTRODE PLAT  
E:TRANSFER

12.M1331066  
(x3)  
COIL SPRING:TER  
MINAL

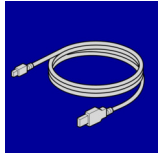
6.M0121063  
(x3)  
TERMINAL:CHARG  
E

14.M1331068  
COIL SPRING:EAR  
TH:PAPER TRAY

13.M1331067  
COIL SPRING:TRA  
NSFER:CHARGE

3.04583010N  
(x14)  
HEXAGON HEAD T  
APPING SCREW:3  
X10

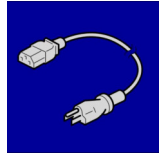
## ACCESSORIES



1.B2685452  
CABLE:USB



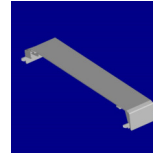
2.M1011301  
PLATE:LOGO:RIC



3.M1015799  
POWER SUPPLY CORD:CHN



4.M1331328  
DECAL:MANUAL FEED:CAUTION:CH  
N



5.M1332715  
COVER:PREVENTFENCE:PAPER TR  
AY:A4

## Exclusive Parts

Number	Part Name	Group	ID
52152713	BOTTOM PLATE PAD	U004_S001_S001	5
AW020198	PHOTOINTERRUPTOR:LG2A14NL 1	U004	6
		U007	7
AW110101	THERMOSTAT:LOWER	U007_S001	8
B2685452	CABLE:USB	ACCESSORIES	1
G0113941	CAP:TONER HOPPER	U005	3
G0201160	SNAP RING	U004	7
G5123029	RUBBER FOOT	U001	2
		U011	5
G8003133	SIDE FENCE GEAR	U004	8
		U004_S001	8
M0121063	TERMINAL:CHARGE	U011	6
M0122613	COMPRESSION SPRING:SEPARATION	U004_S001	9
M0122631	CLOTH:EARTH:PAPER FEED	U004	10
M0124454	SPRING:EXIT ROLLER:EXIT	U008	2
M0124488	BUSHING:DIA6XDIA10X6	U004	11
M0124699	DECAL:WARNING (HIGH TEMPERATURE):FRONT	U011	7
M0134622	EXIT ROLLER:DUPLEX	U004	12
M0134623	SPRING:EXIT	U004	13
<b>M0A11121</b>	<b>GEAR:DRIVE:FUSING:NO.4</b>	<b>U009</b>	<b>16</b>
M1011301	PLATE:LOGO:RIC	ACCESSORIES	2
M1014203	HOT ROLLER	U007_S001	9
M1014210	GEAR:HOT ROLLER	U007_S001	10
M1014214	PLAIN SHAFT BEARING:PRESSURE ROLLER	U007_S001	11
M1014222	RETAINING RINGS-C:HOT ROLLER:RIGHT	U007_S001	12
M1014235	RETAINING RINGS-C:HOT ROLLER:LEFT	U007_S001	13
M1014452	GEAR:EXIT ROLLER:PAPER EXIT UNIT	U004	14
M1015799	POWER SUPPLY CORD:CHN	ACCESSORIES	3
M1331061	COIL SPRING:DISCHARGE:ELECTRODE PLATE	U011	8
M1331062	ELECTRODE PLATE:TRANSFER	U011	9
M1331063	COIL SPRING:DISCHARGE:AIO	U011	10

Number	Part Name	Group	ID
M1331064	PAPER TRAY:DISCHARGE	U011	11
M1331066	COIL SPRING:TERMINAL	U011	12
M1331067	COIL SPRING:TRANSFER:CHARGE	U011	13
		E	
M1331068	COIL SPRING:EARTH:PAPER TRAY	U011	14
M1331090	SAFETY SWITCH:ARM	U011	15
M1331093	COIL SPRING:LEFT:EXIT	U011	16
M1331094	COIL SPRING:RIGHT:EXIT	U011	17
M1331117	GEAR:DRIVE:DRUM	U009	4
M1331118	GEAR:DRIVE:FUSING:NO.1	U009	5
M1331119	GEAR:DRIVE:FUSING:NO.2	U009	6
M1331120	GEAR:DRIVE:FUSING:NO.3	U009	7
M1331126	GEAR:DRIVE:EXIT:NO.1	U009	9
M1331127	GEAR:DRIVE:EXIT:NO.2	U009	10
M1331131	GEAR:DRIVE:PAPER FEED:NO.1	U009	11
M1331132	GEAR:DRIVE:PAPER FEED:NO.2	U009	12
M1331133	GEAR:DRIVE:PAPER FEED:NO.3	U009	13
M1331146	SPRING:DRIVE SUB-UNIT:RELEASE	U009	14
		E	
M1331155	DC BRUSHLESS MOTOR:20W	U009	15
M1331251	COVER:SIDE PLATE:LEFT	U001	3
M1331261	COVER:SIDE PLATE:RIGHT	U001	4
M1331311	COVER:EXIT:FRAME	U001	5
M1331315	COVER:UPPER:CHN	U001	6
M1331326	COVER:MANUAL FEED:DOOR	U001	7
M1331327	MANUAL FEED TABLE:ENTRANCE	U001	8
M1331328	DECAL:MANUAL FEED:CAUTION:CHN	ACCESSORIES	4
M1331332	COVER:REAR	U001	9
M1331342	COVER:REAR LOWER:NET	U001	10
M1331352	KEY:OPERATION SUB-UNIT	U002	1
M1331362	LENS:LED:OPERATION SUB-UNIT	U002	2
M1331850	OPTICAL WRITING UNIT	U003_S001	2
M1332501	PAPER TRAY:ASS'Y	U004_S001	15
M1332550	BUSHING:FLANGE TYPE:DIA6	U004	16
M1332610	TRAY BOTTOM PLATE	U004_S001_S001	17
M1332620	FRICTION PAD	U004_S001	18

## Exclusive Parts

Number	Part Name	Group	ID
M1332702	COVER:PAPER TRAY	U004_S001	19
M1332703	PAPER TRAY:REAR	U004_S001	20
M1332705	SIDE FENCE:LEFT	U004_S001	21
M1332706	SIDE FENCE:RIGHT	U004_S001	22
M1332707	END FENCE	U004_S001	23
M1332709	STOPPER:BASE	U004_S001	24
M1332710	SPRING:RELEASE:TRAY BOTTOM PLATE	U004_S001	25
M1332712	COMPRESSION SPRING:TRAY BOTTOM PLATE	U004_S001	26
M1332715	COVER:PREVENTFENCE:PAPER TRAY:A4	ACCESSORIES	5
M1332717	DECAL:SIDE FENCE:LEFT	U004_S001	27
M1332718	RUBBER BUSHING:COVER:PAPER TRAY	U004_S001	28
M1332732	FEELER:PAPER END SENSOR:PAPER FEED	U004	29
M1332734	ELECTROMAGNETIC CLUTCH:PAPER FEED	U004	30
M1332735	FILM:PAPER FEED	U004	31
M1332737	SHAFT:FEED	U004	32
M1332741	GUIDE PLATE:CONNECTING	U004	33
M1332742	TRANSPORT ROLLER:CONNECTING	U004	34
M1332743	FEELER:REGISTRATION SENSOR	U004	35
M1332750	GUIDE PLATE:MANUAL FEED:ASSY	U004	36
M1332752	SIDE FENCE:MANUAL FEED:LEFT	U004	37
M1332753	SIDE FENCE:MANUAL FEED:RIGHT	U004	38
M1332754	RACK:SIDE FENCE	U004	39
M1332755	FEELER:MANUAL FEED SENSOR	U004	40
M1332759	PAPER FEED ROLLER	U004	41
M1332762	GROUND PLATE:ROLLER:CONNECTING	U004	42
M1334204	PRESSURE ROLLER:DIA25	U007_S001	14
M1334208	PLAIN SHAFT BEARING:HOT ROLLER	U007_S001	15

Number	Part Name	Group	ID
M1334211	HEATER:700W:220V:INFRARED	U007_S001	16
M1334216	GUIDE PLATE:STRAIGHT	U007	17
M1334217	FUSING ENTRANCE GUIDE PLATE	U007_S001	18
M1334218	LEVER:PRESSURE	U007_S001	19
M1334219	FEELER:EXIT:SENSOR	U007	20
M1334220	COIL SPRING:FEELER:EXIT	U007	21
M1334221	STRIPPER PAWLS	U007_S001	22
M1334223	TENSION SPRING:PICKOFF PAWL	U007_S001	23
M1334225	FUSING ENTRANCE GUIDE PLATE:UPPER	U007_S001	24
M1334226	FLAT NUT:HEATER	U007_S001	25
M1334227	GROUND PLATE:FUSING UNIT	U007_S001	26
M1334228	COVER:FEELER	U007	27
M1334229	LEVER:PRESSURE:LEFT	U007_S001	28
M1334230	LEVER:PRESSURE:RIGHT	U007_S001	29
M1334231	TENSION SPRING:FUSING:PRESSURE	U007_S001	30
M1334240	EXIT ROLLER:STRAIGHT	U007	31
M1334241	HOUSING:THERMOSTAT	U007_S001	32
M1334243	EXIT ROLLER:FUSING	U007_S001	33
M1334244	ELECTRODE:LEFT	U007_S001	34
M1334245	SPRING:EXIT ROLLER:FUSING	U007_S001	35
M1334248	THERMISTOR	U007_S001	36
M1334254	DECAL:WARNING (HIGH TEMPERATURE):REAR PART	U007	37
M1334257	GEAR:DRIVE:STRAIGHT	U007_S001	38
M1334258	GEAR:CONNECTING:STRAIGHT	U007_S001	39
M1334261	HOOK:PRESSURE:LEFT	U007_S001	40
M1334262	HOOK:PRESSURE:RIGHT	U007_S001	41
M1334263	SHEET:HOOK:LEFT	U007_S001	42
M1334264	SHEET:HOOK:RIGHT	U007_S001	43
M1334265	SHEET:PRESSURE RELEASE:LEFT	U007_S001	44
M1334266	SHEET:PRESSURE RELEASE:RIGHT	U007_S001	45
M1334451	EXIT ROLLER:PAPER EXIT UNIT	U008	3
M1334453	PLAIN SHAFT BEARING:EXIT	U008	4
M1334457	EXIT ROLLER	U008	5

## Exclusive Parts

Number	Part Name	Group	ID
M1334459	EXIT ROLLER	U008	6
M1334465	PLATE:EXIT	U008	7
M1334466	GUIDE PLATE:EXIT:UPPER	U008	8
M1334467	GUIDE PLATE:EXIT:LOWER	U008	9
M1334485	EXTENSION TRAY:EXIT:P	U001	11
M1334486	TRAY:EXIT:P	U001	12
M1335063	PCB:OPU	U002	3
M1335311	POWER SUPPLY UNIT:60.09W:CH N:ASS'Y	U010	3
M1335402	POWER PACK:CHN:ASS'Y	U010	4
M1336201	SEPARATION UNIT:ASS'Y	U006	1
M1336250	TRANSFER ROLLER	U006	2
M1336254	GEAR:TRANSFER ROLLER	U006	3
M1336259	ROLLER:POSITIONING:TRANSFER ROLLER	U006	4
M1336262	BUSHING:TRANSFER ROLLER:RIG HT	U006	5
M1336263	BUSHING:TRANSFER ROLLER:LE FT	U006	6
M1336264	SPRING:TRANSFER ROLLER	U006	7
M1354001	FUSING UNIT:CHN	U007_S001	46
M1441321	COVER:FRONT:M144/M163	U001	13
M1445050	PCB:ECBCTL:CHN:ASS'Y	U010	5

## Standard Parts



03530030N  
SCREW:M3X3



04503012N  
TAPPING SCREW:3X12



04503014N  
TAPPING SCREW:M3X14



04503020N  
TAPPING SCREW:M3X20



04513006N  
TAPPING SCREW - 3X6



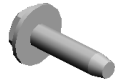
04513008N  
TAPPING SCREW - M3X8



04523014N  
BINDING SELF-TAPPING SCREW:M3X14



04583010N  
HEXAGON HEAD TAPPING SCREW:3X10



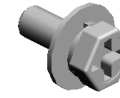
04583012N  
HEXAGON HEAD TAPPING SCREW:3X12



07200040E  
RETAINING RING - M4



07200060E  
RETAINING RING - M6



08046127  
HEXAGONAL BOLT:DOUBLE SCREW:M3X8



08050089  
RETAINING RING - M4



12042612  
MICRO SWITCH:D3V-16506-3 C25

## Design Change List

Number	Title	Set	Old Part		New Part		Index No.		Q'ty	Interchg		Reason	Cut-in S/N
			P/N	Name	P/N	Name	Group	ID		Indiv.	Set		
201706-01	1706 Modification	-	M1331121	GEAR:DRIVE:FU SING:NO.4	M0A11121	GEAR:DRIVE:FU SING:NO.4	U009	16	1	O/O			M14421:
201406-01	1406 Modification	-	M1013651	CAP:USED TONE R			U005	4	1				M14421:

