

Reissued: 25-Oct-10

Model: PN-MF2a	Date: 27-04-09	No.: RM048001e
----------------	----------------	----------------

RTB Reissue

The items in bold italics have been corrected.

Subject: Firmware Release Note: System Firmware		Prepared by: Y.Gaman	
From: 2nd Overseas Tech Support Sec., 2nd PQM Dept.			
Classification:	<input type="checkbox"/> Troubleshooting <input type="checkbox"/> Mechanical <input type="checkbox"/> Paper path <input type="checkbox"/> Product Safety	<input type="checkbox"/> Part information <input type="checkbox"/> Electrical <input type="checkbox"/> Transmit/receive <input checked="" type="checkbox"/> Other ()	<input type="checkbox"/> Action required <input type="checkbox"/> Service manual revision <input type="checkbox"/> Retrofit information <input checked="" type="checkbox"/> Tier 2

This RTB has been issued to announce the firmware release information for the **System Firmware**.

For China model

Version	Program No.	Effective Date
2.07m	M049CHN207m	September 2010 production
2.07g	M049207g	February 2010 production
2.06q	M049206q	September 2009 production
2.06K	M049206K	July 2009 production
2.06G	M049206G	1st Mass production
2.05G	M049205G	

Version	Modified Points or Symptom Corrected
2.07m	<p><i>Other changes:</i> <i>1. Supports the new CIS.</i></p> <p><i>IMPORTANT:</i> <i>Update the <u>boot file</u> in addition to the <u>regular firmware file</u>.</i></p> <p><i>Procedure</i> <i>Note:</i> <i>After you upgrade the System firmware to this version (<u>ver. 2.07m</u>), you cannot downgrade to a previous version.</i> <i>The procedure for updating the boot files is the same as the one used to update the regular firmware files.</i></p> <p><i>1) First, update the bootfile to <u>ver. 3.01</u>, M049CHN207m-P02.fwf.</i> <i>2) Then, update the System firmware to this version (<u>ver. 2.07m</u>), M049CHN207m-P01.fwf.</i></p>
2.07g	<p>Symptom corrected: 1. After a PC is turned OFF and ON, it may not detect the USB connection with the MFP.</p> <p>Other changes: 1. Scanner control was further improved.</p>

Reissued: 25-Oct-10

Model: PN-MF2a		Date: 27-04-09	No.: RM048001e
Version	Modified Points or Symptom Corrected		
2.06q	Symptom corrected: 1. The following occur when scanning a file as a multi-page PDF using Scan to Media (USB): <ul style="list-style-type: none">– Full-color mode: The image appears as an inverted negative.– B/W mode: The image cannot be stored to the USB media. 2. The "BRIGHTNESS" settings (Menu846) return to default after the machine is rebooted.		
2.06K	Other changes: To comply with Energy Star program ver1.1, the default setting for Eco Energy was changed so that the machine switches to Eco Energy Mode immediately after finishing a print job.		
2.06G 2.05G	1st Mass production		

Reissued: 25-Oct-10

Model: PN-MF2a	Date: 27-04-09	No.: RM048001e
----------------	----------------	----------------

For ASIA/Europe model

Version	Program No.	Effective Date
2.07m	M049EU207m	September 2010 production
2.07g	M049207g	February 2010 production
2.05w	M049205w	September 2009 production
2.05Q	M049205Q	July 2009 production
2.05M	M049205M	1st Mass production
2.05J	M049205J	1st Mass production

Version	Modified Points or Symptom Corrected
2.07m	<p>Other changes:</p> <ol style="list-style-type: none"> Supports the new CIS. <p>IMPORTANT: Update the <u>boot file</u> in addition to the <u>regular firmware file</u>.</p> <p>Procedure Note: After you upgrade the System firmware to this version (<u>ver. 2.07m</u>), you cannot downgrade to a previous version. The procedure for updating the boot files is the same as the one used to update the regular firmware files.</p> <ol style="list-style-type: none"> First, update the bootfile to <u>ver. 3.01</u>, M049EU207m-P02.fwf. Then, update the System firmware to this version (<u>ver. 2.07m</u>), M049EU207m-P01.fwf.
2.07g	<p>Symptom corrected:</p> <ol style="list-style-type: none"> After a PC is turned OFF and ON, it may not detect the USB connection with the MFP. Wording errors (Finnish) appear in the operation panel display. <p>Other changes:</p> <ol style="list-style-type: none"> Scanner control was further improved.
2.05w	<p>Symptom corrected:</p> <ol style="list-style-type: none"> The following occur when scanning a file as a multi-page PDF using Scan to Media (USB): <ul style="list-style-type: none"> Full-color mode: The image appears as an inverted negative. B/W mode: The image cannot be stored to the USB media.
2.05Q	<p>Other changes:</p> <p>To comply with Energy Star program ver1.1, the default setting for Eco Energy was changed so that the machine switches to Eco Energy Mode immediately after finishing a print job.</p>
2.05M	1st Mass production
2.05J	1st Mass production

Reissued: 25-Oct-10

Model: PN-MF2b	Date: 1-May-09	No.: RM048002d
----------------	----------------	----------------

RTB Reissue

The items in bold italics have been corrected.

Subject: Firmware Release Note: System Firmware		Prepared by: Y.Gaman	
From: 2nd Overseas Tech Support Sec., 2nd PQM Dept.			
Classification:	<input type="checkbox"/> Troubleshooting	<input type="checkbox"/> Part information	<input type="checkbox"/> Action required
	<input type="checkbox"/> Mechanical	<input type="checkbox"/> Electrical	<input type="checkbox"/> Service manual revision
	<input type="checkbox"/> Paper path	<input type="checkbox"/> Transmit/receive	<input type="checkbox"/> Retrofit information
	<input type="checkbox"/> Product Safety	<input checked="" type="checkbox"/> Other ()	<input checked="" type="checkbox"/> Tier 2

This RTB has been issued to announce the firmware release information for the **System Firmware**.

For China model

Version	Program No.	Effective Date
2.07m	M048CHN207m	September 2010 production
2.07g	M048CHN207g	February 2010 production
2.06q	M048206q	September 2009 production
2.06h	M048206h	1st Mass production

Version	Modified Points or Symptom Corrected
2.07m	<p>Symptom corrected:</p> <ol style="list-style-type: none"> <i>An ADF motor malfunction may occur if a fax is received during machine initialization.</i> <i>Fax reception may fail if bit 6 of software switch 4 is set to a value of 1.</i> <i>In some cases, a Scan to PC image cannot be saved to the PC.</i> <i>In some cases, the first page of a Scan to PC image scanned in full color may appear blank.</i> <p>Other changes:</p> <ol style="list-style-type: none"> <i>Supports the new CIS.</i> <p><u>IMPORTANT:</u> <i>To apply the solution for the ADF motor malfunction, update the <u>boot file</u> in addition to the <u>regular firmware file</u>.</i></p> <p><u>Procedure</u> <u>Note:</u> <i>After you upgrade the System firmware to this version (<u>ver. 2.07m</u>), you cannot downgrade to a previous version.</i> <i>The procedure for updating the boot files is the same as the one used to update the regular firmware files.</i></p> <ol style="list-style-type: none"> <i>First, update the bootfile to <u>ver. 3.01</u>, M048CHN207m-P02.fwf.</i> <i>Then, update the System firmware to this version (<u>ver. 2.07m</u>), M048CHN207m-P01.fwf.</i>

Reissued: 25-Oct-10

Model: PN-MF2b		Date: 1-May-09	No.: RM048002d
Version	Modified Points or Symptom Corrected		
2.07m	<p>Symptom corrected:</p> <ol style="list-style-type: none"> 1. An ADF motor malfunction may occur if a FAX is received during machine initialization. 2. FAX reception may fail if bit 6 of software switch 4 is set to a value of 1. 3. In some cases, a Scan to PC image cannot be stored to the PC. 4. In some cases, the first page of a Scan to PC image scanned in full color may appear blank. <p>Other changes:</p> <ol style="list-style-type: none"> 1. Supports the new CIS. <p><u>IMPORTANT:</u></p> <p>To apply the solution for the ADF motor malfunction, update the <u>boot file</u> (M048CHN207m-P02.fwf) in addition to the <u>regular firmware file</u> (M048CHN207m-P01.fwf).</p> <p>—Note: The procedure for updating the boot files is the same as the one used to update the regular firmware files.</p>		
2.07g	<p>Symptom corrected:</p> <ol style="list-style-type: none"> 1. The ADF can be selected for EcoTrans, which will send the FAX immediately. 2. After a PC is turned OFF and ON, it may not detect the USB connection with the MFP. <p>Other changes:</p> <ol style="list-style-type: none"> 1. ADF and Scanner control were further improved. 		
2.06q	<p>Symptom corrected:</p> <ol style="list-style-type: none"> 1. The following occur when scanning a file as a multi-page PDF using Scan to Media (USB): <ul style="list-style-type: none"> – Full-color mode: The image appears as an inverted negative. – B/W mode: The image cannot be stored to the USB media. 2. If a FAX is sent while error code 07 is displayed, the machine will freeze or the image will appear abnormal on the receiving end. 3. The "BRIGHTNESS" settings (Menu846) return to default after the machine is rebooted. 4. Under specific conditions, the background of a received FAX appears black (see RTB #RM048003 for details). 		
2.06h	1st Mass production		

Reissued: 25-Oct-10

Model: PN-MF2b	Date: 1-May-09	No.: RM048002d
----------------	----------------	----------------

For ASIA/Europe model

Version	Program No.	Effective Date
2.07m	M048EU207m	September 2010 production
2.07g	M048EU207g	February 2010 production
2.05w	M048205w	September 2009 production
2.05k	M048205k	1st Mass production

Version	Modified Points or Symptom Corrected
2.07m	<p>Symptom corrected:</p> <ol style="list-style-type: none"> 1. An ADF motor malfunction may occur if a FAX is received during machine initialization. 2. FAX reception may fail if bit 6 of software switch 4 is set to a value of 1. 3. In some cases, a Scan to PC image cannot be saved to the PC. 4. In some cases, the first page of a Scan to PC image scanned in full color may appear blank. <p>Other changes:</p> <ol style="list-style-type: none"> 1. Supports the new CIS. <p><u>IMPORTANT:</u> To apply the solution for the ADF motor malfunction, update the <u>boot file</u> in addition to the <u>regular firmware file</u>.</p> <p><u>Procedure</u></p> <p><u>Note:</u> After you upgrade the System firmware to this version (<u>ver. 2.07m</u>), you cannot downgrade to a previous version. The procedure for updating the boot files is the same as the one used to update the regular firmware files.</p> <ol style="list-style-type: none"> 1) First, update the bootfile to <u>ver. 3.01</u>, M048EU207m-P02.fwf. 2) Then, update the System firmware to this version (<u>ver. 2.07m</u>), M048EU207m-P01.fwf.
2.07m	<p>Symptom corrected:</p> <ol style="list-style-type: none"> 1. An ADF motor malfunction may occur if a FAX is received during machine initialization. 2. FAX reception may fail if bit 6 of software switch 4 is set to a value of 1. 3. In some cases, a Scan to PC image cannot be stored to the PC. 4. In some cases, the first page of a Scan to PC image scanned in full color may appear blank. <p>Other changes:</p> <ol style="list-style-type: none"> 1. Supports the new CIS. <p><u>IMPORTANT:</u> To apply the solution for the ADF motor malfunction, update the <u>boot file</u> (M048EU207m-P02.fwf) in addition to the <u>regular firmware file</u> (M048EU207m-P01.fwf).</p>

Reissued: 25-Oct-10

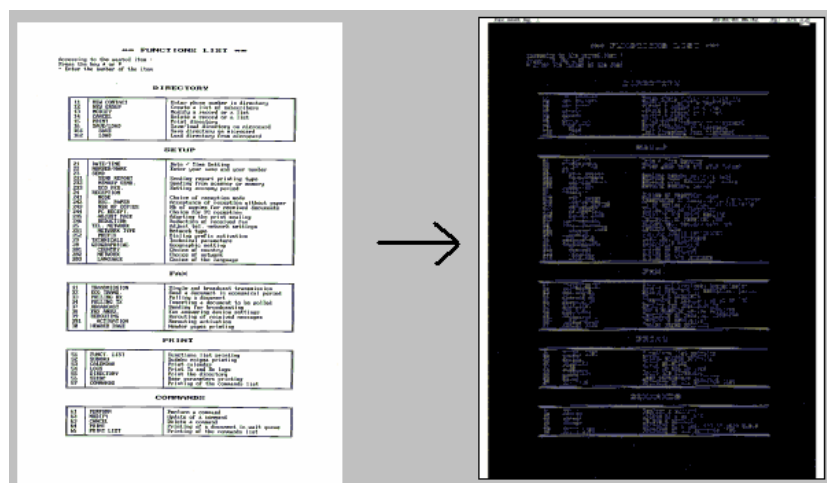
Model: PN-MF2b		Date: 1-May-09	No.: RM048002d
Version	Modified Points or Symptom Corrected		
	Note: The procedure for updating the boot files is the same as the one used to update the regular firmware files.		
2.07g	Symptom corrected: 1. The ADF can be selected for EcoTrans, which will send the FAX immediately. 2. After a PC is turned OFF and ON, it may not detect the USB connection with the MFP. 3. Wording errors (Finnish) appear in the operation panel display. Other changes: 1. ADF and Scanner control were further improved.		
2.05w	Symptom corrected: 1. The following occur when scanning a file as a multi-page PDF using Scan to Media (USB): <ul style="list-style-type: none"> Full-color mode: The image appears as an inverted negative. B/W mode: The image cannot be stored to the USB media. 2. If a FAX is sent while error code 07 is displayed, the machine will freeze or the image will appear abnormal on the receiving end. 3. Under specific conditions, the background of a received FAX appears black (see RTB #RM048003 for details).		
2.05k	1st Mass production		

Model: PN-MF2b		Date: 07-Aug-09	No.: RM048003
Subject: Fax background appears black		Prepared by: Y.Gaman	
From: 1st Tech. Support Sec. Service Support Dept.			
Classification:	<input checked="" type="checkbox"/> Troubleshooting	<input type="checkbox"/> Part information	<input type="checkbox"/> Action required
	<input type="checkbox"/> Mechanical	<input type="checkbox"/> Electrical	<input type="checkbox"/> Service manual revision
	<input type="checkbox"/> Paper path	<input type="checkbox"/> Transmit/receive	<input type="checkbox"/> Retrofit information
	<input type="checkbox"/> Product Safety	<input type="checkbox"/> Other ()	<input checked="" type="checkbox"/> Tier 2

SYMPTOM

Under the following conditions, the background of a received fax appears black, as shown in the sample below:

- The fax is sent using Delayed Transmission (Memory Transmission)
- Contrast is set to “-----0” and Brightness set to “0-----”.



CAUSE

The same Contrast and Brightness settings for the scanning engine are applied to both copier and fax images. However, fax images are one-bit binary, while copier images are multi-bit digital. When the Contrast and Brightness settings are set to their extreme values (limits), the fax image will appear as shown above.

SOLUTION

Please do not set Contrast and Brightness to the settings described above when using Delayed Transmission (Memory Transmission).

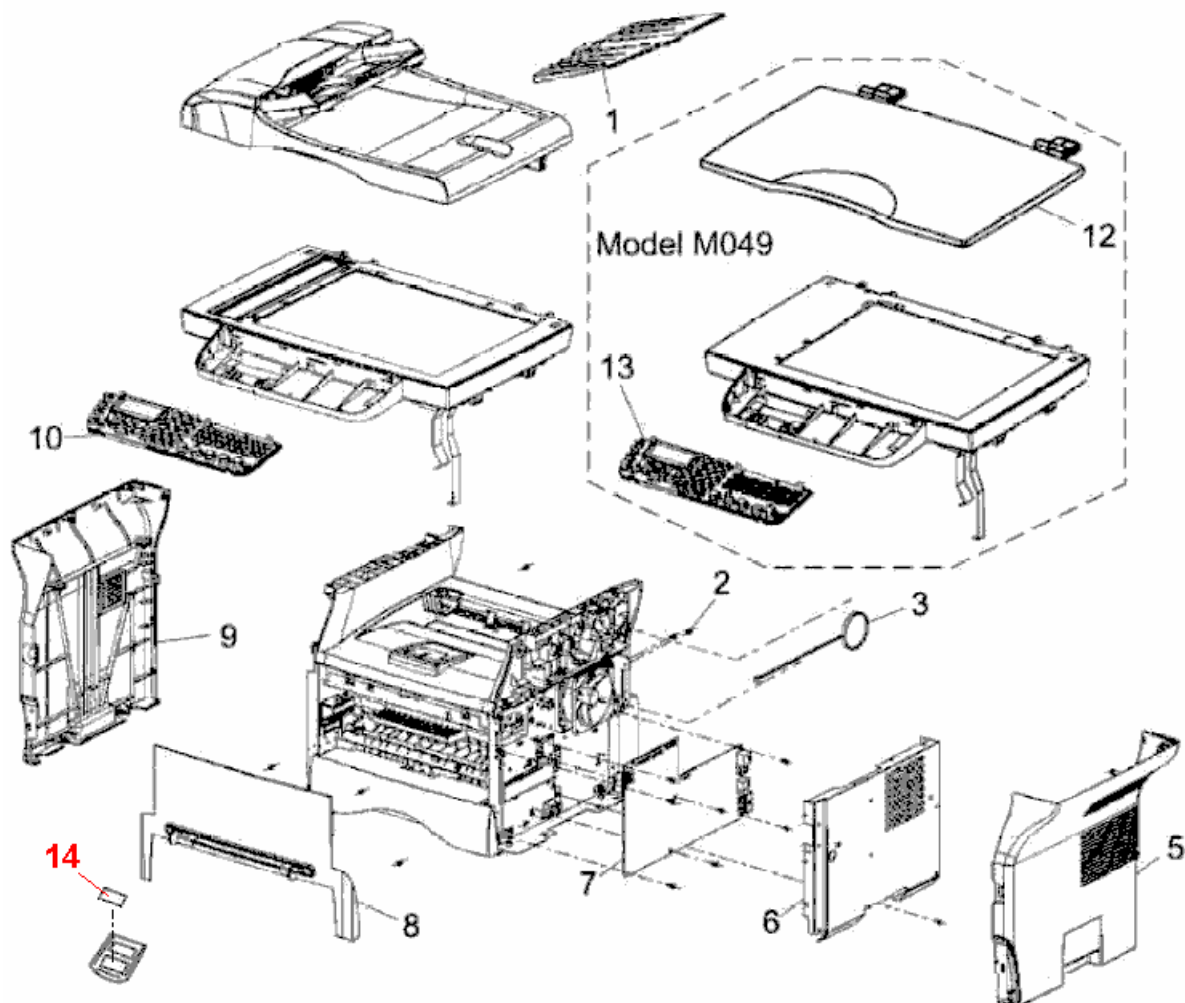
Model: PN-MF2b (Oceania only)		Date: 02-Sep-09	No. RM048004
Subject: Model name decal (Exterior 2)		Prepared by: Y. Gaman	
From: 1st Tech. Support Sec. Service Support Dept.			
Classification:	<input type="checkbox"/> Troubleshooting <input type="checkbox"/> Mechanical <input type="checkbox"/> Paper path <input type="checkbox"/> Product Safety	<input checked="" type="checkbox"/> Part information <input type="checkbox"/> Electrical <input type="checkbox"/> Transmit/receive <input type="checkbox"/> Other ()	<input type="checkbox"/> Action required <input type="checkbox"/> Service manual revision <input type="checkbox"/> Retrofit information <input type="checkbox"/> Tier 2

New part number	Description	Q'ty	Page	Index	Note
M0488634	DECAL:MODEL NAME PLATE:M048:LAN	1	5	14	Oceania only

This decal was added.

SP 1100SF

2.Exterior 2 (M048/M049)

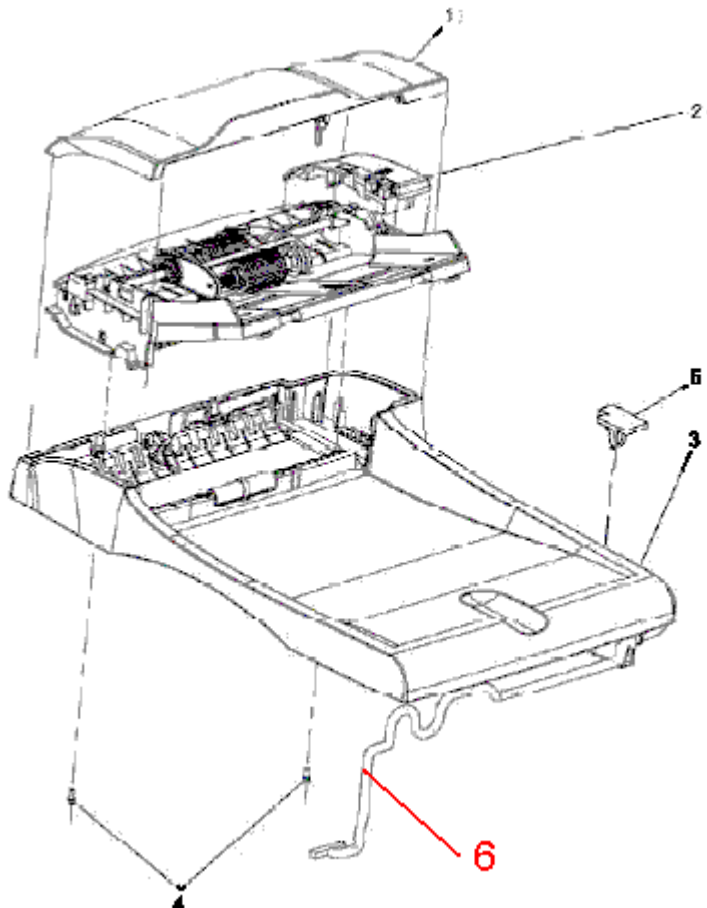


Model: PN-MF2b		Date: 09-Dec-09	No.: RM048005
Subject: Harness:Motor&Sensor (ADF Unit)		Prepared by: Y. Gaman	
From: 2nd Overseas Tech Support Sec. 2nd PQM Dept			
Classification:	<input type="checkbox"/> Troubleshooting <input type="checkbox"/> Mechanical <input type="checkbox"/> Paper path <input type="checkbox"/> Product Safety	<input checked="" type="checkbox"/> Part information <input type="checkbox"/> Electrical <input type="checkbox"/> Transmit/receive <input type="checkbox"/> Other ()	<input type="checkbox"/> Action required <input type="checkbox"/> Service manual revision <input type="checkbox"/> Retrofit information <input type="checkbox"/> Tier 2

New part number	Description	Q'ty	Int	Page	Index	Note
M0481059	HARNESS:MOTOR & SENSOR	1	-	17	6	

Change: This part was added.

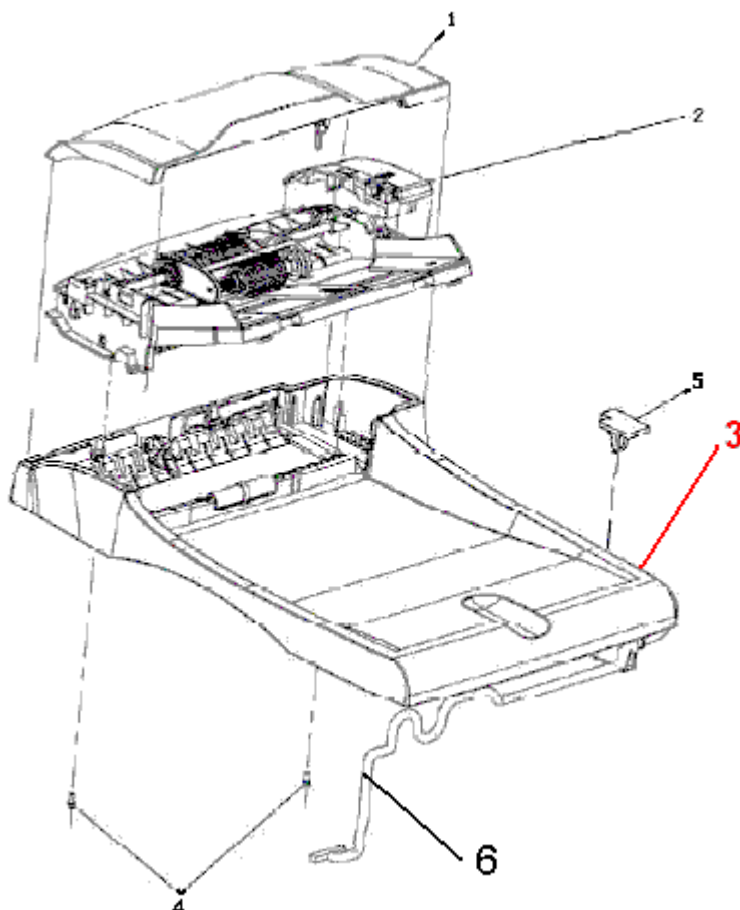
Reason: Requests from the field.



Model: PN-MF2b		Date: 21-Jan-10	No.: RM048006
Subject: ADF Exit Tray (ADF Unit)		Prepared by: Y. Gaman	
From: 2nd Overseas Tech Support Sec. 2nd PQM Dept			
Classification:	<input type="checkbox"/> Troubleshooting <input type="checkbox"/> Mechanical <input type="checkbox"/> Paper path <input type="checkbox"/> Product Safety	<input checked="" type="checkbox"/> Part information <input type="checkbox"/> Electrical <input type="checkbox"/> Transmit/receive <input type="checkbox"/> Other ()	<input type="checkbox"/> Action required <input type="checkbox"/> Service manual revision <input type="checkbox"/> Retrofit information <input type="checkbox"/> Tier 2

Incorrect part number	Correct part number	Description	Q'ty	Int	Page	Index	Note
M0481056	M0481057	ADF Exit Tray	1	X/O	17	3	

Change/Reason: The part number listed in the Parts Catalog for the DF Exit Tray was corrected.



Model: PN-MF2a/b	Date: 16-Nov-10	No.: RM048007a
------------------	-----------------	----------------

RTB Reissue

The items in ***bold italics*** were corrected.

Subject: ADF Motor and Scanner Motor Malfunction		Prepared by: Y. Gaman	
From: 2nd Overseas Tech Support Sec. 2nd PQM Dept			
Classification:	<input checked="" type="checkbox"/> Troubleshooting <input type="checkbox"/> Mechanical <input type="checkbox"/> Paper path <input type="checkbox"/> Product Safety	<input type="checkbox"/> Part information <input type="checkbox"/> Electrical <input type="checkbox"/> Transmit/receive <input type="checkbox"/> Other ()	<input type="checkbox"/> Action required <input type="checkbox"/> Service manual revision <input type="checkbox"/> Retrofit information <input checked="" type="checkbox"/> Tier 2

SYMPTOM

- 1) Originals loaded in the ADF are not fed
- 2) The flatbed scanner doesn't scan
- 3) The machine does not reach the Ready condition

CAUSE

An abnormal motor control signal is sent, causing the ADF motor or scanner motor to fail. Eventually, this failure damages the main board.

SOLUTION

Do the procedures on the next page, part of which involves updating the System Firmware to **ver.2.07g** or newer.

Note:

With this version, the motor control programs were changed so that the abnormal control signals are not sent.

Serial Numbers:

	EUROPE (-27)	ASIA (-29)	OCEANIA (-22)	CHINA (-21)
PN-MF1a (M049)	S6308720384 S6308920218	S6308740105 S6308940051	-	S6308760001 S6309360160
PN-MF1b (M048)	S6208721153 S6209320010	S6208840001 S6209340288	S6208750001 S6209250280	S6208660960 S6209360001

- Serial numbers that are underlined are the last S/N before ver. 2.07g was applied.
- Serial numbers that are **not** underlined are the cut-in S/N for ver. 2.07g.

Model: PN-MF2a/b	Date: 16-Nov-10	No.: RM048007a
------------------	-----------------	----------------

Procedures

Do the following, depending on which symptom (Symptom #1, #2, or #3 above) is reported from the field.

Important:

- In these procedures, do not replace the main board by itself. Always be sure to replace the motors as well. This is to avoid damage to the main board.
- If it is not possible to check the impedance values of the motors, do the “**Alternate Procedures**” on the next page.

Symptom 1: Originals loaded in the ADF are not fed

1. Check the impedance levels of the ADF motor.
2. If the impedance between the common pin (red harness) and any of the other pins is **not** 60 ohms +/-10%, replace the **ADF motor**.
Note: The ADF motor connector is located inside the ADF upper cover.
3. If this does not solve the symptom, replace the main board.
4. Upgrade the System firmware to **v2.07g** or newer, even if **all** of the impedance values are normal.

Symptom 2: The flatbed scanner doesn't scan.

Do the same procedure as above for the **scanner motor**.

Note: The scanner motor connector is located on the main board.

Symptom 3: The machine does not reach the Ready condition.

Do **both** procedures described above (Symptoms 1 and 2).

Model: PN-MF2a/b

Date: 16-Nov-10

No.: RM048007a

Alternate Procedures

Do the following if it is not possible to check the impedance values of the motors.

Symptom 1:

1. Replace the ADF motor.
2. If this does not solve the symptom, replace the main board.
3. Upgrade the System firmware to **v2.07g** or newer.

Symptom 2:

Do the same as above for the scanner motor.

Symptom 3:

1. Check the elements of the main board for any damage (see the photos below).
2. If any of the elements are damaged, replace the ADF motor, the scanner motor, and the main board **together as a set**.

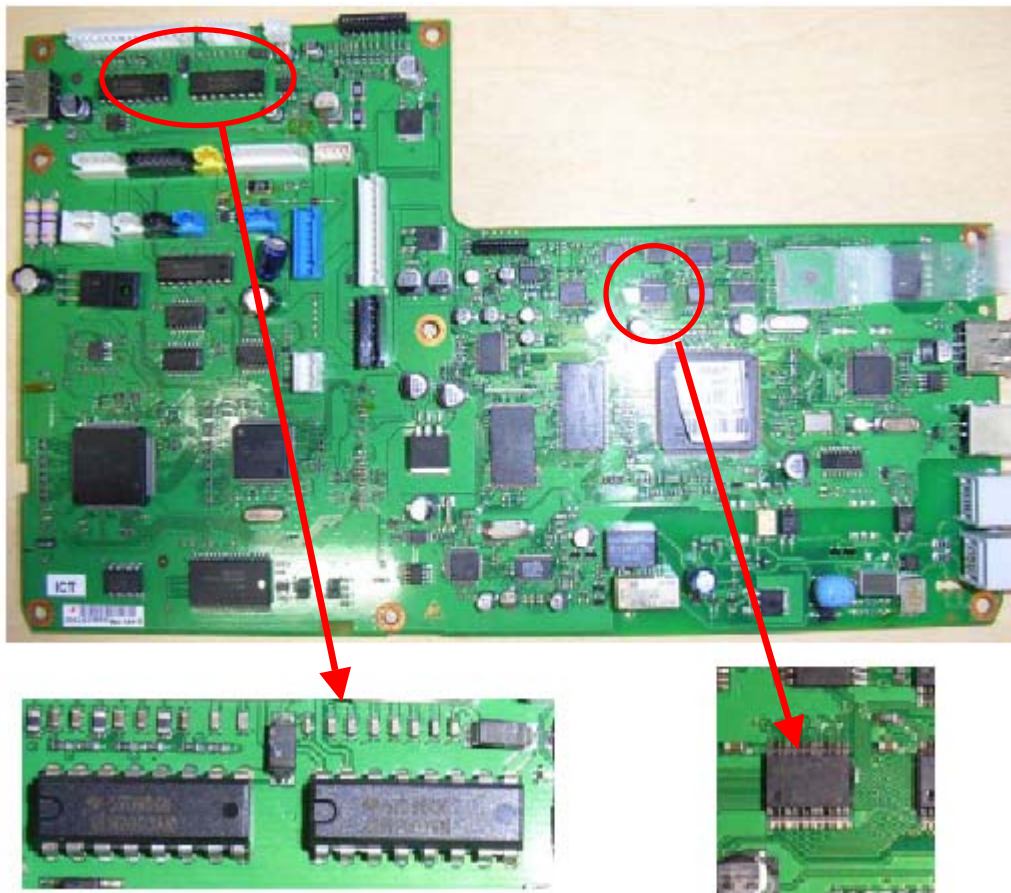
Important: If the elements appear normal, you do not need to replace these parts at this time. However if the symptom recurs later, replace these parts (two motors and main board) at that time, together as a set.

3. Upgrade the System firmware to **v2.07g** or newer.

Model: PN-MF2a/b

Date: 16-Nov-10

No.: RM048007a



Electronic components to check

Model: PN-MF2a/b		Date: 10-May-11	No.:RM048008
Subject: CONTACT IMAGE SENSOR (CIS)		Prepared by: Y. Gaman	
From: 2nd Overseas Tech Support Sec. 2nd PQM Dept			
Classification:	<input type="checkbox"/> Troubleshooting <input type="checkbox"/> Mechanical <input type="checkbox"/> Paper path <input type="checkbox"/> Product Safety	<input checked="" type="checkbox"/> Part information <input type="checkbox"/> Electrical <input type="checkbox"/> Transmit/receive <input checked="" type="checkbox"/> Other ()	<input type="checkbox"/> Action required <input type="checkbox"/> Service manual revision <input type="checkbox"/> Retrofit information <input type="checkbox"/> Tier 2

Old part number	New part number	Description	Q'ty	Int	Page	Index
M0481089	M0481090	CONTACT IMAGE SENSOR: 186362807:186362828	1	O/O*	13	16

Change/Reason: Vendor change

Important: When you install the new part, upgrade the firmware to **v2.07m or later**.

Note: The box of the new part contains the following addendum sheet, which explains the required firmware update.

ADDENDUM
<p>-English:</p> <p>When the technician changes the CIS Liteon REF: 186362828, it's compulsory to upgrade the device with a FW >= 2.07j.</p> <p>For the different OEM models the latest version in production must be used.</p>

Model: PN-MF2		Date: 15-Mar-12	No.:RM048009
Subject: Scanner Base		Prepared by: Y. Gaman	
From: 3rd Tech Service Sect., MFP/P Tech Service Dept.			
Classification:	<input type="checkbox"/> Troubleshooting <input type="checkbox"/> Mechanical <input type="checkbox"/> Paper path <input type="checkbox"/> Product Safety	<input checked="" type="checkbox"/> Part information <input type="checkbox"/> Electrical <input type="checkbox"/> Transmit/receive <input type="checkbox"/> Other ()	<input type="checkbox"/> Action required <input type="checkbox"/> Service manual revision <input type="checkbox"/> Retrofit information <input type="checkbox"/> Tier 2

Old part number	New part number	Description	Q'ty	Int	Page	Index	Note
M0481035	M0481102	RZF:253443548:SCANNERBOT TOMKIT	1	X/O	13	8	
M0481036						9	
M0481040						13	

Change: The shapes of these parts were changed, and the parts were combined into one service part (the old part numbers were deleted).

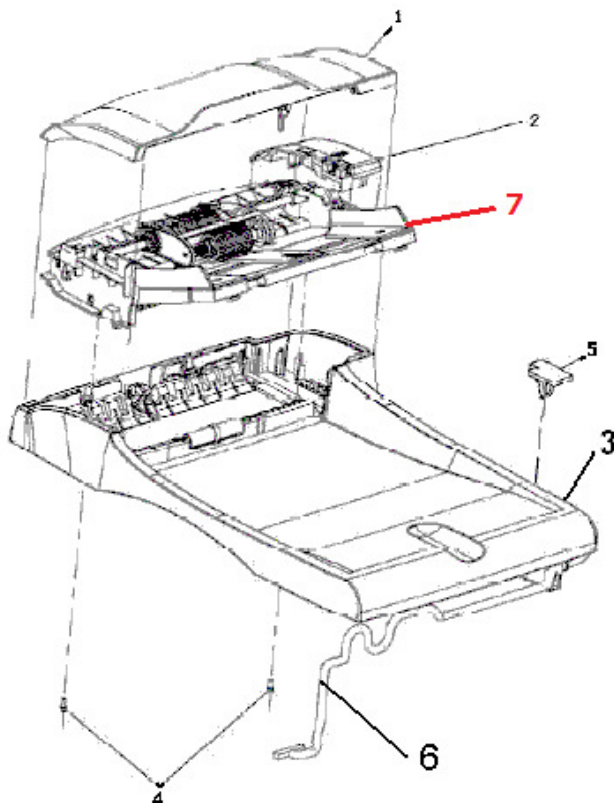
Reason: Vendor change

Model: PN-MF2		Date: 25-Mar-15	No.:RM048010
Subject: ADF PAPER FEED ASS'Y		Prepared by: Y. Gaman	
From: 3rd Tech Service Sect., MFP/P Tech Service Dept.			
Classification:	<input type="checkbox"/> Troubleshooting <input type="checkbox"/> Mechanical <input type="checkbox"/> Paper path <input type="checkbox"/> Product Safety	<input checked="" type="checkbox"/> Part information <input type="checkbox"/> Electrical <input type="checkbox"/> Transmit/receive <input type="checkbox"/> Other ()	<input type="checkbox"/> Action required <input type="checkbox"/> Service manual revision <input type="checkbox"/> Retrofit information <input type="checkbox"/> Tier 2

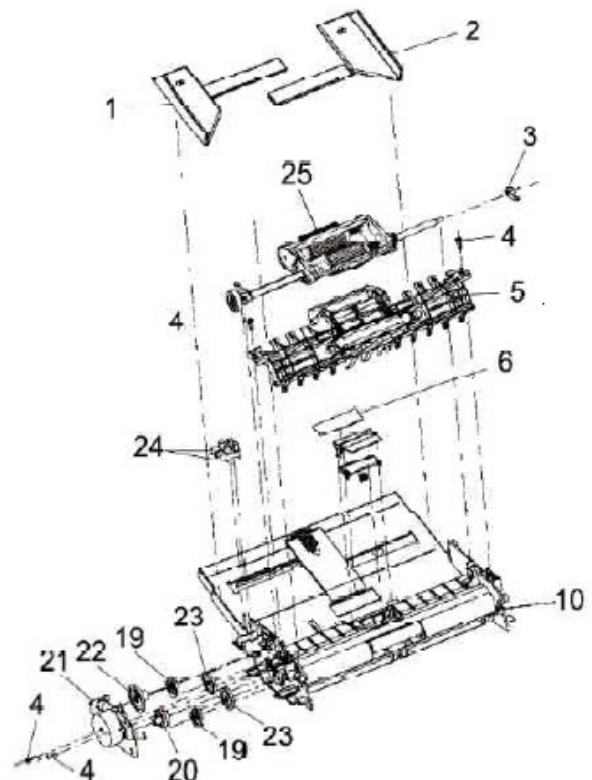
Old part number	New part number	Description	Q'ty	Int	Page	Index	Note
M0489501	-	PAPER FEED ROLLER ASS'Y:253240690	1	X/O	19	25	
-	M0489502	ADF PAPER FEED ASS'Y 253017421:252970629	1	X/O	17	7	

Change/Reason: Vendor change

Due to a vender change, Paper Roller Ass'y (Index 25) cannot be supplied any more. Please replace the assembly of M0489502 (New Index 7) instead.



16



18

Model: PN-C1/MF2	Date: 28-Apr-15	No.: RM2990007
-------------------------	-----------------	----------------

Subject: <u>Part discontinued</u>		Prepared by: Takuma Sakakibara	
From: 2nd Tech Service Sect., MFP/Printer Tech Service Dept.			
Classification:	<input type="checkbox"/> Troubleshooting <input type="checkbox"/> Mechanical <input type="checkbox"/> Paper path <input type="checkbox"/> Product Safety	<input checked="" type="checkbox"/> Part information <input type="checkbox"/> Electrical <input type="checkbox"/> Transmit/receive <input type="checkbox"/> Other ()	<input type="checkbox"/> Action required <input type="checkbox"/> Service manual revision <input type="checkbox"/> Retrofit information <input checked="" type="checkbox"/> Tier 2

The following part has been discontinued. It's not available anymore.

Description	PN	Memo
SEPARATION PAD ASSY:252876321	M0481065	ADF separation pad