

Reissued: 18-Jun-07

Model: Model PN-C1	Date: 4-Dec-06	No.: RB299001
--------------------	----------------	---------------

RTB Reissue

The items in bold italics have been added.

Subject: Firmware Release Note: System FW		Prepared by: T. Shintani	
From: 1st Tech. Support Sec. Service Support Dept.			
Classification:	<input type="checkbox"/> Troubleshooting	<input type="checkbox"/> Part information	<input type="checkbox"/> Action required
	<input type="checkbox"/> Mechanical	<input type="checkbox"/> Electrical	<input type="checkbox"/> Service manual revision
	<input type="checkbox"/> Paper path	<input type="checkbox"/> Transmit/receive	<input type="checkbox"/> Retrofit information
	<input type="checkbox"/> Other ()		

This RTB has been issued to announce the firmware release information for the System FW

Version	Program No.	Effective Date
<i>1.03e</i>	<i>B299103e</i>	<i>May 2007 production</i>
1.02p	B299102	1st Mass production.

Version	Modified Points or Symptom Corrected
<i>1.03e</i>	<ol style="list-style-type: none"> <i>Solved the problem showing "Toner empty" during PC printing.</i> <i>Solved the problem showing "Paper empty" during USB print.</i> <i>Becomes possible to print by USB memory (JPEG file) when choosing 10x15/A4 size correctly.</i> <i>Becomes possible to use the USB U3 type of memory stick.</i> <i>Translation of Russian languages for LCD messages.</i> <i>Special 2-dial tones of Brazil are adjusted</i>
1.02p	1st Mass production.

Model: Model PN-C1		Date: 5-Jul-07	No.: RB299002
Subject : Caution "Erase the consumable counters"		Prepared by: T. Shintani	
From: 1st Tech. Support Sec. Service Support Dept.			
Classification:	<input checked="" type="checkbox"/> Troubleshooting <input type="checkbox"/> Part information <input type="checkbox"/> Action required <input type="checkbox"/> Mechanical <input type="checkbox"/> Electrical <input type="checkbox"/> Service manual revision <input type="checkbox"/> Paper path <input type="checkbox"/> Transmit/receive <input type="checkbox"/> Retrofit information <input type="checkbox"/> Product Safety <input type="checkbox"/> Other ()		

Symptom

When "Erase the consumable counters" is executed, all machine settings return to the factory defaults and the machine displays "WAITING FOR INIT CARD".

Cause

Firmware bug

Solution

Firmware:

This function ("Erase the consumable counters") will be deleted.

(▼ -> # -> 4)

Release date: End of July 07 (After V1.03e)

In the field:

Until the new firmware is released, do not execute "Erase the consumable counters".

(▼ -> # -> 4)

Administrator Functions

Initializing and erasing memory

Before you start, set the "Soft-Switch 1" bit 8 parameter value to 1.

Description	Input Keys
Reset all parameters (user, installer or technical) to the default configuration (factory configuration):	▼ > "#" > "0"
Erase the directory:	▼ > "#" > "1"
Erase the logs :	▼ > "#" > "2"
Erase the printer counters:	▼ > "#" > "3"
Erase the consumable counters (▼, "8", "5"): <div> <p>Note</p> <ul style="list-style-type: none"> To see the initialization message (this requires inserting the smart card INIT), switch On then Off. </div>	Open the front door then: ▼ > "#" > "4"

Reissued: 28-Aug-07

Model: Model PN-C1	Date: 4-Dec-06	No.: RB299001a
--------------------	----------------	----------------

RTB Reissue

The items in bold italics have been added.

Subject: Firmware Release Note: System FW		Prepared by: T. Shintani	
From: 1st Tech. Support Sec. Service Support Dept.			
Classification:	<input type="checkbox"/> Troubleshooting	<input type="checkbox"/> Part information	<input type="checkbox"/> Action required
	<input type="checkbox"/> Mechanical	<input type="checkbox"/> Electrical	<input type="checkbox"/> Service manual revision
	<input type="checkbox"/> Paper path	<input type="checkbox"/> Transmit/receive	<input type="checkbox"/> Retrofit information
	<input checked="" type="checkbox"/> Other ()		

This RTB has been issued to announce the firmware release information for the System FW

Version	Program No.	Effective Date
<i>1.03h</i>	<i>B299103h</i>	<i>August 2007 production</i>
1.03e	B299103e	May 2007 production
1.02p	B299102	1st Mass production.

Version	Modified Points or Symptom Corrected
<i>1.03h</i>	<p><i>Symptom corrected:</i></p> <ol style="list-style-type: none"> <i>The machine does not resume the job after a paper jam is cleared.</i> <i>Sometimes, it is not possible to print JPEG files with a pixel width of 5000 or more uploaded from a USB memory stick.</i> <i>Sometimes, it is not possible to print Russian .txt files uploaded from a USB memory stick.</i> <i>Wording error ("FAX-ANSW.") in Italian.</i> <i>The "#4" function was deleted. (See RTB RB279002).</i> <p><i>Other changes:</i></p> <ol style="list-style-type: none"> <i>An error message was added for when a second USB memory stick is inserted.</i>
1.03e	<ol style="list-style-type: none"> Solved the problem showing "Toner empty" during PC printing. Solved the problem showing "Paper empty" during USB print. Becomes possible to print by USB memory(JPEG file) with choosing 10x15/A4 size correctly. Becomes to use the USB U3 type of memory stick. Translation of Russia languages on LCD messages. Special 2 dial tone of Brazil are adjusted
1.02p	1st Mass production.

Reissued: 07-Feb-08

Model: Model PN-C1	Date: 4-Dec-06	No.: RB299001b
--------------------	----------------	----------------

RTB Reissue

The items in bold italics have been added.

Subject: Firmware Release Note: System FW		Prepared by: T. Shintani	
From: 1st Tech. Support Sec. Service Support Dept.			
Classification:	<input type="checkbox"/> Troubleshooting	<input type="checkbox"/> Part information	<input type="checkbox"/> Action required
	<input type="checkbox"/> Mechanical	<input type="checkbox"/> Electrical	<input type="checkbox"/> Service manual revision
	<input type="checkbox"/> Paper path	<input type="checkbox"/> Transmit/receive	<input type="checkbox"/> Retrofit information
	<input checked="" type="checkbox"/> Other ()		

This RTB has been issued to announce the firmware release information for the System FW

Version	Program No.	Effective Date
<i>1.03p</i>	<i>B299103p</i>	<i>December 2007 production</i>
1.03h	B299103h	August 2007 production
1.03e	B299103e	May 2007 production
1.02p	B299102	1st Mass production.

Version	Modified Points or Symptom Corrected
<i>1.03p</i>	<p><i>Symptom corrected:</i></p> <ol style="list-style-type: none"> <i>Images printed with a GDI driver appear shifted on the paper.</i> <i>If the user selects "All" when printing from a USB memory stick, and then specifies two or more prints per image, only one is printed out per image.</i> <p><i>Other changes:</i></p> <ol style="list-style-type: none"> <i>The speaker volume for direct transmission was increased.</i> <i>The pick-up roller will be raised to the upper position if an ADF jam occurs (making it easier to remove the jammed original).</i>
1.03h	<p>Symptom corrected:</p> <ol style="list-style-type: none"> The machine does not resume the job after a paper jam is cleared. Sometimes, it is not possible to print JPEG files with a pixel width of 5000 or more uploaded from a USB memory stick. Sometimes, it is not possible to print Russian .txt files uploaded from a USB memory stick. Wording error ("FAX-ANSW.") in Italian. The "#4" function was deleted. (see RTB RB279002). <p>Other changes:</p> <ol style="list-style-type: none"> An error message was added for when a second USB memory stick is inserted.

Reissued: 07-Feb-08

Model: Model PN-C1		Date: 4-Dec-06	No.: RB299001b
Version	Modified Points or Symptom Corrected		
1.03e	<ol style="list-style-type: none">1. Solved the problem showing "Toner empty" during PC printing.2. Solved the problem showing "Paper empty" during USB print.3. Becomes possible to print by USB memory(JPEG file) with choosing 10x15/A4 size correctly.4. Becomes to use the USB U3 type of memory stick.5. Translation of Russia languages on LCD messages.6. Special 2 dial tone of Brazil are adjusted		
1.02p	1st Mass production.		

Model: Model PN-C1		Date: 7-Jul-07	No.: RB299003
Subject : ADF No-feed problem		Prepared by: T. Shintani	
From: 1st Tech. Support Sec. Service Support Dept.			
Classification:	<input checked="" type="checkbox"/> Troubleshooting <input type="checkbox"/> Part information <input type="checkbox"/> Action required <input type="checkbox"/> Mechanical <input type="checkbox"/> Electrical <input type="checkbox"/> Service manual revision <input type="checkbox"/> Paper path <input type="checkbox"/> Transmit/receive <input type="checkbox"/> Retrofit information <input type="checkbox"/> Product Safety <input type="checkbox"/> Other ()		

SYMPTOM

The document cannot be fed when it is loaded in the ADF.

CAUSE

The paper catches on the ribs of the paper input guide.

SOLUTION

Production line:

The shapes of the parts listed below were changed.

Cut in S/N:

	RAC	RE	RA	Oceania	RCN	Korea	Russia
Model PN- C1	1st Mass Production	M0879120688	M0879140252	M0879250064	M0879260230	M0879280384	M0879290320
Model PN- Fa		A5479222225	A5479240072	A5479250064	A5479160113	A5479280384	
Model PN- Fc	A5579200110	A5579220384					

In the field:

If the symptom is reported on a machine produced before the cut-in S/N, replace the paper input guide, paper feed roller foam, and paper deflect guide with the following new parts **together as a set**:

B2999703: PAPER INPUT GUIDE

H3209700: PAPER FEED ROLLER FOAM_COUNTERMEASURE

B2999707: PAPER DEFLECT GUIDE

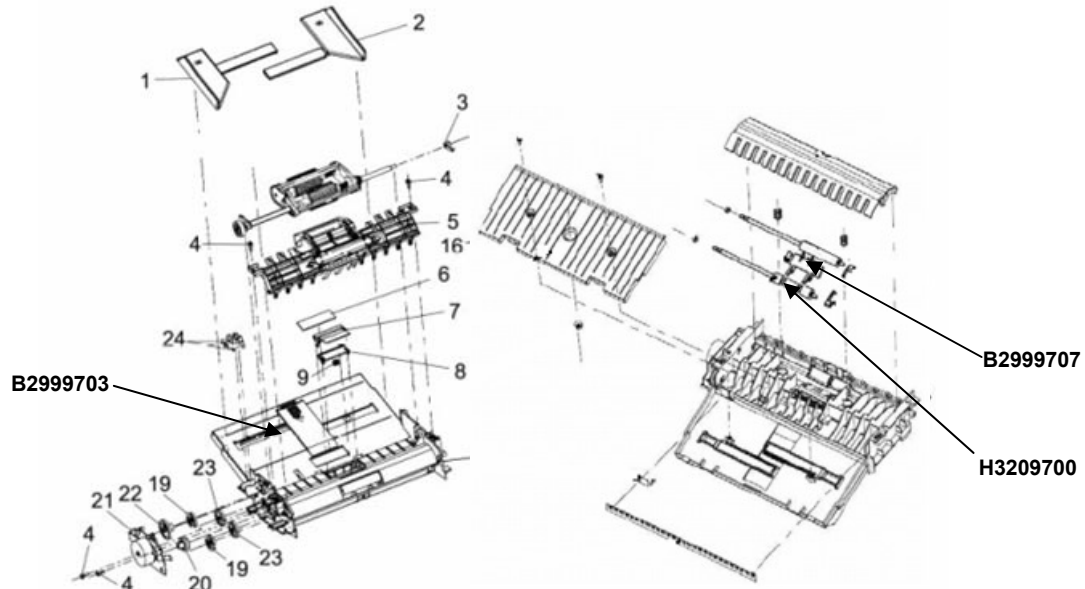
Old part number	New part number	Description	Q'ty	Int	Page	Index	Note
B2999557	B2999703	PAPER INPUT GUIDE	1		17	10	
B2999565	B2999565	PAPER FEED ROLLER FOAM	2-1		17	18	
	H3209700	PAPER FEED ROLLER FOAM_COUNTERMEASURE	2-1		17	26	
-	B2999707	PAPER DEFLECT GUIDE	0-1		17	27	

Model: Model PN-C1

Date: 7-Jul-07

No.: RB299003

8.ADF Unit 2 (B299)



Model: Model PN-C1		Date: 7-Jul-07	No.: RB299004
Subject : The image was waved by ADF scan		Prepared by: T. Shintani	
From: 1st Tech. Support Sec. Service Support Dept.			
Classification:	<input checked="" type="checkbox"/> Troubleshooting <input type="checkbox"/> Part information <input type="checkbox"/> Action required <input type="checkbox"/> Mechanical <input type="checkbox"/> Electrical <input type="checkbox"/> Service manual revision <input type="checkbox"/> Paper path <input type="checkbox"/> Transmit/receive <input type="checkbox"/> Retrofit information <input type="checkbox"/> Product Safety <input type="checkbox"/> Other ()		

SYMPTOM

When the document is scanned by the ADF, parts of the image are slightly elongated along the sub-scan direction (at 13mm, 50mm, 230mm from the leading edge).

CAUSE

The document bumps the paper guide and feed rollers during feeding.

SOLUTION

Production line:

The shapes of the parts listed below were changed.

Cut in S/N:

	RAC	RE	RA	Oceania	RCN	Korea	Russia
Model PN- C1	*	M0879520001	M0879240344	M0879550001	M0879560321	M0879680769	M0879520001
Model PN- Fa		A5479520769	A5479540001	A5479550001	A5479460160	A5479580769	
Model PN- Fc	A5579500001	A5579520001					

*: Production of the N.A. model of the PN-C1 has been under temporary suspension.

After the Nov. 2007 production, the countermeasure is applied.

In the field:

If the symptom is reported on a machine produced before the cut-in S/N, replace the ADF exit tray, paper input guide, foam, and paper deflect guide with the following new parts **together as a set**:

B2999705: ADF EXIT TRAY

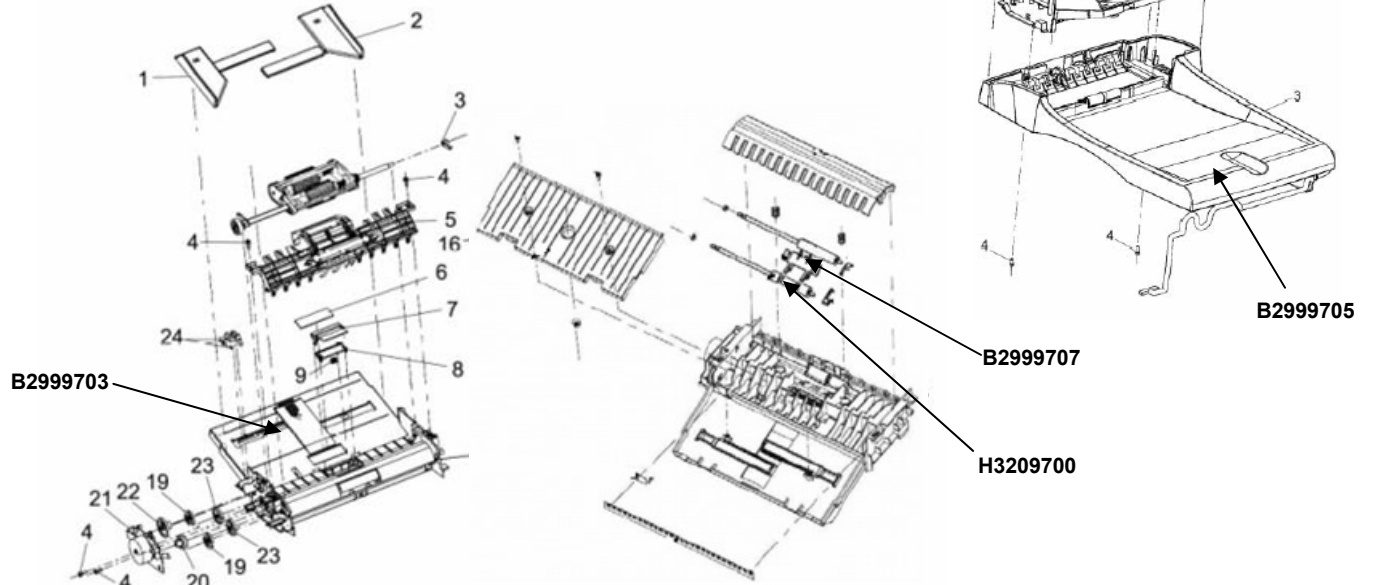
B2999703: PAPER INPUT GUIDE

H3209700: PAPER FEED ROLLER FOAM_COUNTERMEASURE

B2999707: PAPER DEFLECT GUIDE

Old part number	New part number	Description	Q'ty	Int	Page	Index	Note
B2999547	B2999705	ADF EXIT TRY	1		15	3	
B2999557	B2999703	PAPER INPUT GUIDE	1		17	10	
B2999565	B2999565	PAPER FEED ROLLER FOAM	2-1		17	18	
	H3209700	PAPER FEED ROLLER FOAM_COUNTERMEASURE	2-1		17	26	
-	B2999707	PAPER DEFLECT GUIDE	0-1		17	27	

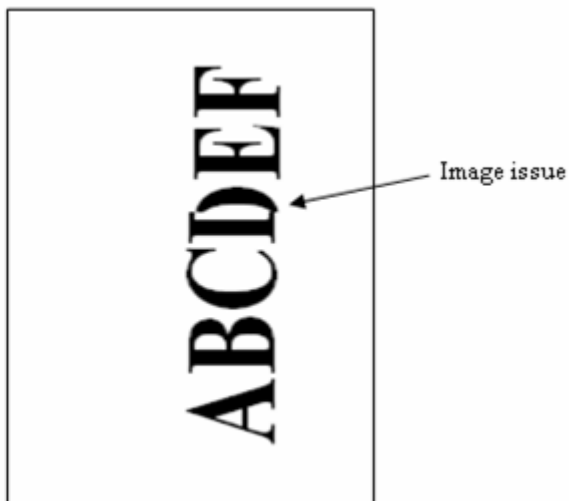
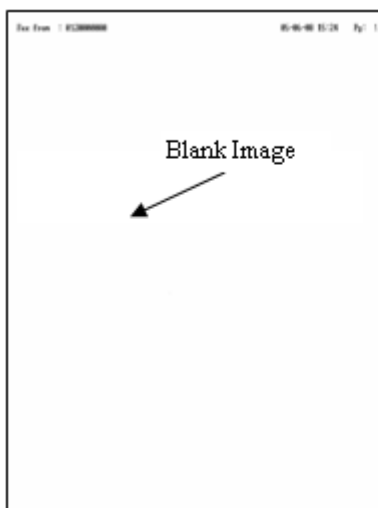
8.ADF Unit 2 (B299)



Model: Model PN-Fa / Model PN-Fc/ Model PN-C1		Date: 10-Dec-08	No.: RB299005
Subject : Blank image with Receiving Header, Digital image problem on Receiving Fax		Prepared by: Y. Yoshida	
From: 1st Tech. Support Sec. Service Support Dept.			
Classification:	<input checked="" type="checkbox"/> Troubleshooting <input type="checkbox"/> Mechanical <input type="checkbox"/> Paper path <input type="checkbox"/> Product Safety	<input type="checkbox"/> Part information <input type="checkbox"/> Electrical <input type="checkbox"/> Transmit/receive <input type="checkbox"/> Other ()	<input type="checkbox"/> Action required <input type="checkbox"/> Service manual revision <input type="checkbox"/> Retrofit information <input checked="" type="checkbox"/> Tier2

SYMPTOM

1. An incoming fax image is blank (but contains the fax headers)
2. Some parts of incoming fax Image are shifted or blank.

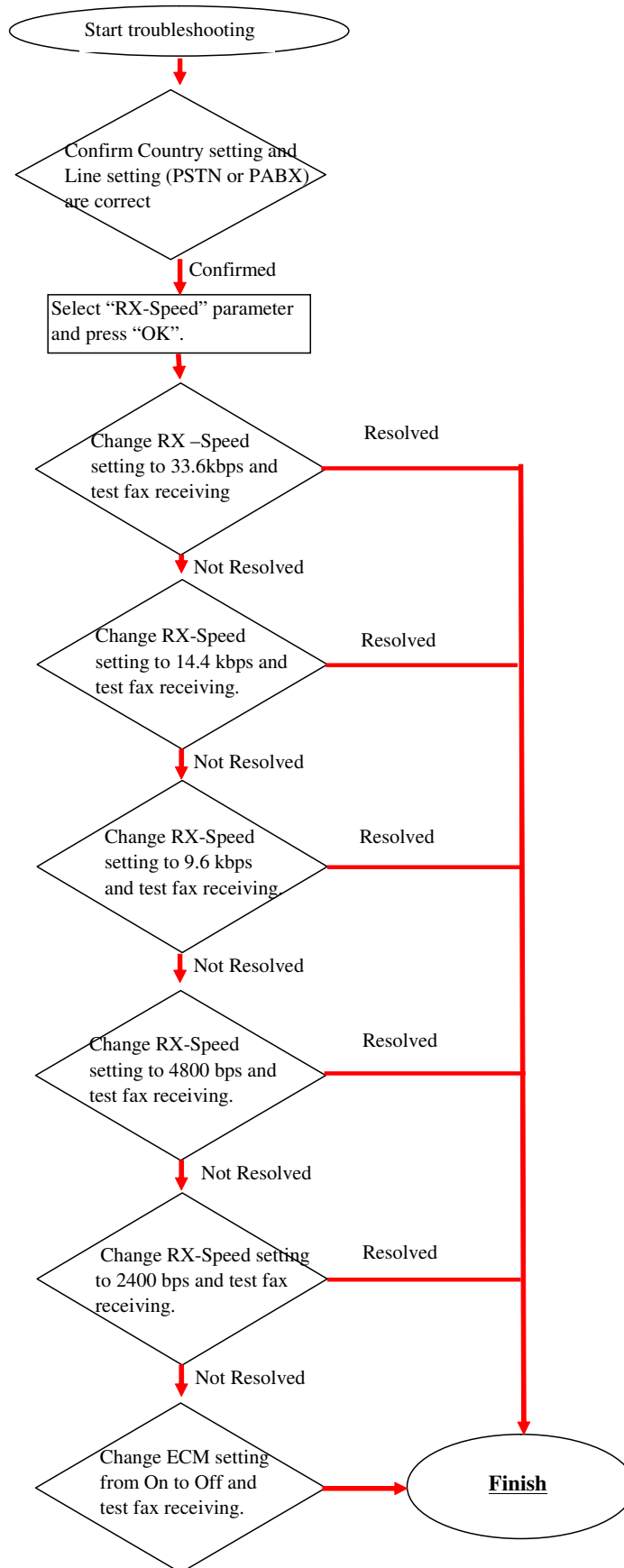


CAUSE

The fax line is unstable or electrical noise distorts the fax line signal.

SOLUTION

Try the troubleshooting Procedure on the next page.



Reissued: 18-Feb-09

Model: Model PN-C1	Date: 4-Dec-06	No.: RB299001c
--------------------	----------------	----------------

RTB Reissue

The items in bold italics have been added.

Subject: Firmware Release Note: System FW		Prepared by: Y. Yoshida	
From: 1st Tech. Support Sec. Service Support Dept.			
Classification:	<input type="checkbox"/> Troubleshooting	<input type="checkbox"/> Part information	<input type="checkbox"/> Action required
	<input type="checkbox"/> Mechanical	<input type="checkbox"/> Electrical	<input type="checkbox"/> Service manual revision
	<input type="checkbox"/> Paper path	<input type="checkbox"/> Transmit/receive	<input type="checkbox"/> Retrofit information
	<input checked="" type="checkbox"/> Other ()		

This RTB has been issued to announce the firmware release information for the System FW

Version	Program No.	Effective Date
<i>1.03u</i>	<i>B299103u</i>	<i>February 2009 production</i>
1.03p	B299103p	December 2007 production
1.03h	B299103h	August 2007 production
1.03e	B299103e	May 2007 production
1.02p	B299102	1st Mass production.

Version	Modified Points or Symptom Corrected
<i>1.03u</i>	<i>Symptom corrected:</i> <i>(NA model only): Incoming telephone calls are not transferred to the answering machine, because the machine is not able to detect the CNG tone (which identifies the incoming communication as a telephone call or fax).</i>
1.03p	Symptom corrected: 1. Images printed with a GDI driver appear shifted on the paper. 2. If the user selects "All" when printing from a USB memory stick, and then specifies two or more prints per image, only one is printed out per image. Other changes: 1. The speaker volume for direct transmission was increased. 2. The pick-up roller will be raised to the upper position if an ADF jam occurs (making it easier to remove the jammed original).
1.03h	Symptom corrected: 1. The machine does not resume the job after a paper jam is cleared. 2. Sometimes, it is not possible to print JPEG files with a pixel width of 5000 or more uploaded from a USB memory stick. 3. Sometimes, it is not possible to print Russian .txt files uploaded from a USB memory stick. 4. Wording error ("FAX-ANSW.") in Italian. 5. The "#4" function was deleted. (see RTB RB279002). Other changes: 1. An error message was added for when a second USB memory stick is inserted.

Reissued: 18-Feb-09

Model: Model PN-C1		Date: 4-Dec-06	No.: RB299001c
Version	Modified Points or Symptom Corrected		
1.03e	<ol style="list-style-type: none">1. Solved the problem showing "Toner empty" during PC printing.2. Solved the problem showing "Paper empty" during USB print.3. Becomes possible to print by USB memory(JPEG file) with choosing 10x15/A4 size correctly.4. Becomes to use the USB U3 type of memory stick.5. Translation of Russia languages on LCD messages.6. Special 2 dial tone of Brazil are adjusted		
1.02p	1st Mass production.		

Reissued: 05-Nov-09

Model: Model PN-C1	Date: 4-Dec-06	No.: RB299001d
--------------------	----------------	----------------

RTB Reissue

The items in bold italics have been added.

Subject: Firmware Release Note: System FW		Prepared by: Y. Gaman	
From: 1st Tech. Support Sec. Service Support Dept.			
Classification:	<input type="checkbox"/> Troubleshooting	<input type="checkbox"/> Part information	<input type="checkbox"/> Action required
	<input type="checkbox"/> Mechanical	<input type="checkbox"/> Electrical	<input type="checkbox"/> Service manual revision
	<input type="checkbox"/> Paper path	<input type="checkbox"/> Transmit/receive	<input type="checkbox"/> Retrofit information
	<input checked="" type="checkbox"/> Other ()		

This RTB has been issued to announce the firmware release information for the System FW

Version	Program No.	Effective Date
1.03y	B299103y	December 2009 production
1.03u	B299103u	February 2009 production
1.03p	B299103p	December 2007 production
1.03h	B299103h	August 2007 production
1.03e	B299103e	May 2007 production
1.02p	B299102	1st Mass production.

Version	Modified Points or Symptom Corrected
1.03y	<ol style="list-style-type: none"> <i>If a fax is sent while error code 07 is displayed, the machine will freeze or the image will appear abnormal on the receiving end.</i> <i>Under specific conditions, the background of a received fax appears black.</i>
1.03u	Symptom corrected: (NA model only): Incoming telephone calls are not transferred to the answering machine, since the machine is not able to detect the CNG tone (which identifies the incoming communication as a telephone call or fax).
1.03p	Symptom corrected: <ol style="list-style-type: none"> Images printed with a GDI driver appear shifted on the paper. If the user selects "All" when printing from a USB memory stick, and then specifies two or more prints per image, only one is printed out per image. Other changes: <ol style="list-style-type: none"> The speaker volume for direct transmission was increased. The pick-up roller will be raised to the upper position if an ADF jam occurs (making it easier to remove the jammed original).

Reissued: 05-Nov-09

Model: Model PN-C1		Date: 4-Dec-06	No.: RB299001d
Version	Modified Points or Symptom Corrected		
1.03h	<p>Symptom corrected:</p> <ol style="list-style-type: none"> 1. The machine does not resume the job after a paper jam is cleared. 2. Sometimes, it is not possible to print JPEG files with a pixel width of 5000 or more uploaded from a USB memory stick. 3. Sometimes, it is not possible to print Russian .txt files uploaded from a USB memory stick. 4. Wording error ("FAX-ANSW.") in Italian. 5. The "#4" function was deleted. (see RTB RB279002). <p>Other changes:</p> <ol style="list-style-type: none"> 1. An error message was added for when a second USB memory stick is inserted. 		
1.03e	<ol style="list-style-type: none"> 1. Solved the problem showing "Toner empty" during PC printing. 2. Solved the problem showing "Paper empty" during USB print. 3. Becomes possible to print by USB memory(JPEG file) with choosing 10x15/A4 size correctly. 4. Becomes to use the USB U3 type of memory stick. 5. Translation of Russia languages on LCD messages. 6. Special 2 dial tone of Brazil are adjusted 		
1.02p	1st Mass production.		

Reissued: 08-Apr-10

Model: Model PN-C1	Date: 4-Dec-06	No.: RB299001e
--------------------	----------------	----------------

RTB Reissue

The items in bold italics have been added.

Subject: Firmware Release Note: System FW		Prepared by: Y. Gaman	
From: 2nd Overseas Tech Support Sec., 2nd PQM Dept.			
Classification:	<input type="checkbox"/> Troubleshooting	<input type="checkbox"/> Part information	<input type="checkbox"/> Action required
	<input type="checkbox"/> Mechanical	<input type="checkbox"/> Electrical	<input type="checkbox"/> Service manual revision
	<input type="checkbox"/> Paper path	<input type="checkbox"/> Transmit/receive	<input type="checkbox"/> Retrofit information
	<input checked="" type="checkbox"/> Other ()		

This RTB has been issued to announce the firmware release information for the System FW

Version	Program No.	Effective Date
1.06b	B299106b	February 2010 production
1.03y	B299103y	December 2009 production
1.03u	B299103u	February 2009 production
1.03p	B299103p	December 2007 production
1.03h	B299103h	August 2007 production
1.03e	B299103e	May 2007 production
1.02p	B299102	1st Mass production

Version	Modified Points or Symptom Corrected
1.06b	Other changes: 1. ADF and Scanner control were further improved.
1.03y	1. If a FAX is sent while error code 07 is displayed, the machine will freeze or the image will appear abnormal on the receiving end. 2. Under specific conditions, the background of a received FAX appears black.
1.03u	Symptom corrected: (NA model only): Incoming telephone calls are not transferred to the answering machine, since the machine is not able to detect the CNG tone (which identifies the incoming communication as a telephone call or fax).
1.03p	Symptom corrected: 1. Images printed with a GDI driver appear shifted on the paper. 2. If the user selects "All" when printing from a USB memory stick, and then specifies two or more prints per image, only one is printed out per image. Other changes: 1. The speaker volume for direct transmission was increased. 2. The pick-up roller will be raised to the upper position if an ADF jam occurs (making it easier to remove the jammed original).
1.03h	Symptom corrected: 1. The machine does not resume the job after a paper jam is cleared. 2. Sometimes, it is not possible to print JPEG files with a pixel width of 5000 or more uploaded from a USB memory stick.

Reissued: 08-Apr-10

Model: Model PN-C1		Date: 4-Dec-06	No.: RB299001e
Version	Modified Points or Symptom Corrected		
	<ul style="list-style-type: none">3. Sometimes, it is not possible to print Russian .txt files uploaded from a USB memory stick.4. Wording error ("FAX-ANSW.") in Italian.5. The "#4" function was deleted. (see RTB RB279002). <p>Other changes:</p> <ul style="list-style-type: none">1. An error message was added for when a second USB memory stick is inserted.		
1.03e	<ul style="list-style-type: none">1. Solved the problem showing "Toner empty" during PC printing.2. Solved the problem showing "Paper empty" during USB print.3. Becomes possible to print by USB memory (JPEG file) with choosing 10x15/A4 size correctly.4. Becomes to use the USB U3 type of memory stick.5. Translation of Russia languages on LCD messages.6. Special 2 dial tone of Brazil are adjusted		
1.02p	1st Mass production		

Model: PN-C1/C1L		Date: 15-Mar-12	No.:RB299006
Subject: Scanner Base		Prepared by: Y. Gaman	
From: 3rd Tech Service Sect., MFP/P Tech Service Dept.			
Classification:	<input type="checkbox"/> Troubleshooting <input type="checkbox"/> Mechanical <input type="checkbox"/> Paper path <input type="checkbox"/> Product Safety	<input checked="" type="checkbox"/> Part information <input type="checkbox"/> Electrical <input type="checkbox"/> Transmit/receive <input type="checkbox"/> Other ()	<input type="checkbox"/> Action required <input type="checkbox"/> Service manual revision <input type="checkbox"/> Retrofit information <input type="checkbox"/> Tier 2

Old part number	New part number	Description	Q'ty	Int	Page	Index	Note
M0481035	M0481102	RZF:253443548:SCANNERBOT TOMKIT	1	X/O	11	8	
M0481036						9	
M0481040						13	

Change: The shapes of these parts were changed, and the parts were combined into one service part (the old part numbers were deleted).

Reason: Vendor change

Model: PN-C1/MF2	Date: 28-Apr-15	No.: RM2990007
-------------------------	-----------------	----------------

Subject: <u>Part discontinued</u>		Prepared by: Takuma Sakakibara	
From: 2nd Tech Service Sect., MFP/Printer Tech Service Dept.			
Classification:	<input type="checkbox"/> Troubleshooting <input type="checkbox"/> Mechanical <input type="checkbox"/> Paper path <input type="checkbox"/> Product Safety	<input checked="" type="checkbox"/> Part information <input type="checkbox"/> Electrical <input type="checkbox"/> Transmit/receive <input type="checkbox"/> Other ()	<input type="checkbox"/> Action required <input type="checkbox"/> Service manual revision <input type="checkbox"/> Retrofit information <input checked="" type="checkbox"/> Tier 2

The following part has been discontinued. It's not available anymore.

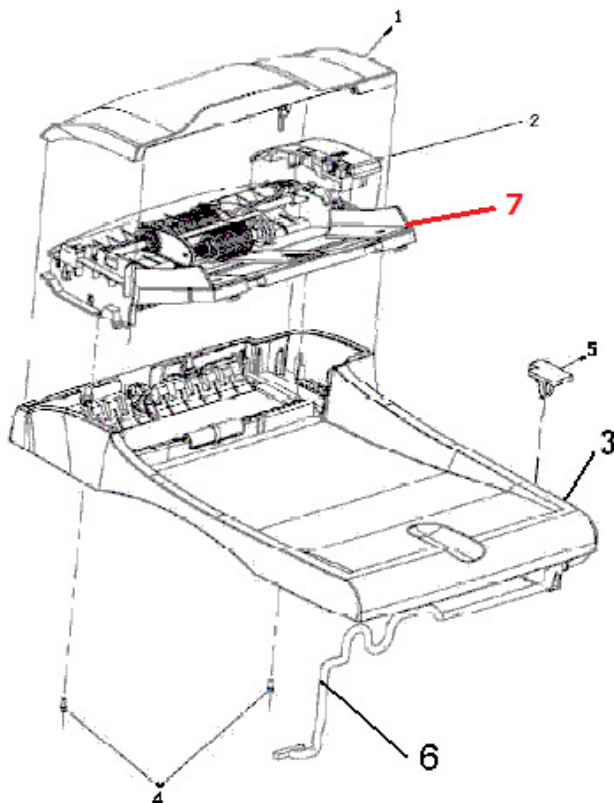
Description	PN	Memo
SEPARATION PAD ASSY:252876321	M0481065	ADF separation pad

Model:PN-C1		Date: 22-Oct-15	No.:RB299008
Subject: ADF PAPER FEED ASS'Y		Prepared by: Y. Gaman	
From: 1st Tech Service Sect., MFP/P Tech Service Dept.			
Classification:	<input type="checkbox"/> Troubleshooting <input type="checkbox"/> Mechanical <input type="checkbox"/> Paper path <input type="checkbox"/> Product Safety	<input checked="" type="checkbox"/> Part information <input type="checkbox"/> Electrical <input type="checkbox"/> Transmit/receive <input type="checkbox"/> Other ()	<input type="checkbox"/> Action required <input type="checkbox"/> Service manual revision <input type="checkbox"/> Retrofit information <input type="checkbox"/> Tier 2

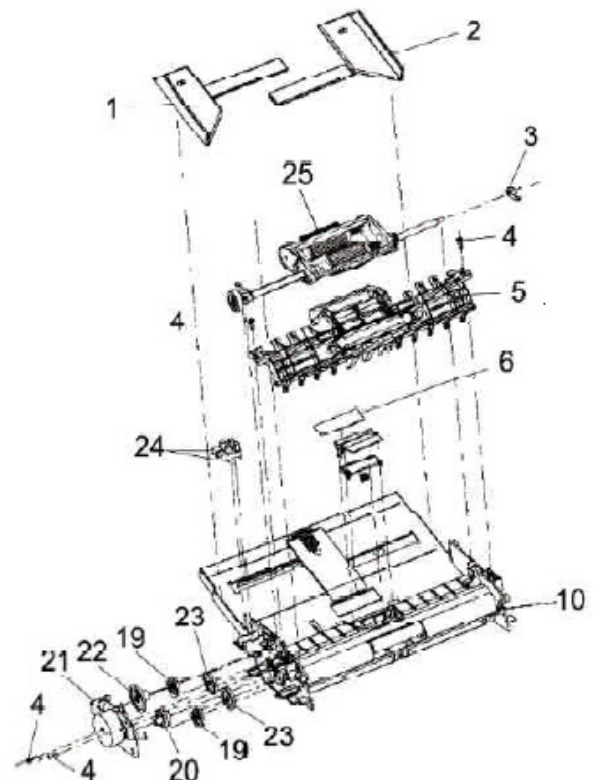
Old part number	New part number	Description	Q'ty	Int	Page	Index	Note
M0489501	-	PAPER FEED ROLLER ASS'Y:253240690	1	X/O	19	25	
-	M0489502	ADF PAPER FEED ASS'Y 253017421:252970629	1	X/O	17	7	

Change/Reason: Vendor change

Due to a vender change, Paper Roller Ass'y (Index 25) cannot be supplied any more. Please replace the assembly of M0489502 (New Index 7) instead.



16



18