

Reissued: 09-Dec-16

Model: ME-P1	Date: 20-Oct-11	No.: RM101001d
--------------	-----------------	----------------

RTB Reissue

The items in ***bold italics*** have been added.

Subject: Firmware Release Note: Controller for China models		Prepared by: Y. Miyamoto	
From: 1st Tech Service Sect., MFP/Printer Tech Service Dept.			
Classification:	<input type="checkbox"/> Troubleshooting <input type="checkbox"/> Mechanical <input type="checkbox"/> Paper path <input type="checkbox"/> Product Safety	<input type="checkbox"/> Part information <input type="checkbox"/> Electrical <input type="checkbox"/> Transmit/receive <input checked="" type="checkbox"/> Other (Firmware)	<input type="checkbox"/> Action required <input type="checkbox"/> Service manual revision <input type="checkbox"/> Retrofit information <input checked="" type="checkbox"/> Tier 2

This RTB has been issued to announce the firmware release information for the **Controller for China models**.

Version	Program No.	Effective Date	Availability of RFU
<i>1.05</i>	<i>M1015051H</i>	<i>December 2016 production</i>	<i>Not available</i>
1.04	M1015051G	November 2012 production	Not available
1.02	M1015051F	June 2012 production	Not available
V1.01	M1015051E	1st Mass production	Not available

Note: Definition of Availability of RFU via @Remote
"Available": The firmware can be updated via RFU or SD card.

"Not available": The firmware can only be updated via SD card.

Version	Modified Points or Symptom Corrected
<i>1.05</i>	<i>Minor bug fixed</i>
1.04	1. The following counter information was added to the Configuration Page: <ul style="list-style-type: none"> - Non-feed jam counter (paper does not reach the registration sensor) - Paper transport/fusing jam counter (paper does not reach the exit sensor) - Fusing/paper exit jam counter (paper stops at the exit sensor or registration sensor) 2. The "Total Counter" values mentioned on machine reports will now use the Engine counters instead of the Controller counters. Note: This is so that Service technicians can confirm more accurate counter figures for replaceable parts (these values cannot be reset to 0).
1.02	The anti-humidity mode to minimize the paper curl has been added.
V1.01	1st Mass production

Reissued: 09-Dec-16

Model: ME-MF1a	Date: 20-Oct-11	No.: RM101002e
-----------------------	-----------------	----------------

RTB Reissue

The items in ***bold italics*** have been added.

Subject: Firmware Release Note: Controller for China models		Prepared by: Y. Miyamoto	
From: 1st Tech Service Sect., MFP/Printer Tech Service Dept.			
Classification:	<input type="checkbox"/> Troubleshooting <input type="checkbox"/> Mechanical <input type="checkbox"/> Paper path <input type="checkbox"/> Product Safety	<input type="checkbox"/> Part information <input type="checkbox"/> Electrical <input type="checkbox"/> Transmit/receive <input checked="" type="checkbox"/> Other (Firmware)	<input type="checkbox"/> Action required <input type="checkbox"/> Service manual revision <input type="checkbox"/> Retrofit information <input checked="" type="checkbox"/> Tier 2

This RTB has been issued to announce the firmware release information for the **Controller for China models**.

Version	Program No.	Effective Date	Availability of RFU
<i>1.05</i>	<i>M1025051J</i>	<i>December 2016 production</i>	<i>Not available</i>
1.04	M1025051H	November 2012 production	Not available
1.03	M1025051G	July 2012 production	Not available
1.02	M1025051F	June 2012 production	Not available
V1.01	M1025051E	1st Mass production	Not available

Note: Definition of Availability of RFU via @Remote
"Available": The firmware can be updated via RFU or SD card.

"Not available": The firmware can only be updated via SD card.

Version	Modified Points or Symptom Corrected
<i>1.05</i>	<i>Minor bug fixed</i>
1.04	1. The following counter information was added to the Configuration Page: <ul style="list-style-type: none"> - Non-feed jam counter (paper does not reach the registration sensor) - Paper transport/fusing jam counter (paper does not reach the exit sensor) - Fusing/paper exit jam counter (paper stops at the exit sensor or registration sensor) 2. The "Total Counter" values mentioned on machine reports will now use the Engine counters instead of the Controller counters. Note: This is so that Service technicians can confirm more accurate counter figures for replaceable parts (these values cannot be reset to 0).
1.03	Specification change: The default setting for Original Type was changed from Text/Photo Mode to Text Mode to meet the market demand.
1.02	The anti-humidity mode to minimize the paper curl has been added.
V1.01	1st Mass production

Reissued: 09-Dec-16

Model: ME-MF1b	Date: 20-Oct-11	No.: RM101003e
-----------------------	-----------------	----------------

RTB Reissue

The items in ***bold italics*** have been added.

Subject: Firmware Release Note: Controller for China models		Prepared by: Y. Miyamoto	
From: 1st Tech Service Sect., MFP/Printer Tech Service Dept.			
Classification:	<input type="checkbox"/> Troubleshooting <input type="checkbox"/> Mechanical <input type="checkbox"/> Paper path <input type="checkbox"/> Product Safety	<input type="checkbox"/> Part information <input type="checkbox"/> Electrical <input type="checkbox"/> Transmit/receive <input checked="" type="checkbox"/> Other (Firmware)	<input type="checkbox"/> Action required <input type="checkbox"/> Service manual revision <input type="checkbox"/> Retrofit information <input checked="" type="checkbox"/> Tier 2

This RTB has been issued to announce the firmware release information for the **Controller for China models**.

Version	Program No.	Effective Date	Availability of RFU
<i>1.05</i>	<i>M1035051J</i>	<i>December 2016 production</i>	<i>Not available</i>
1.04	M1035051H	November 2012 production	Not available
1.03	M1035051G	July 2012 production	Not available
1.02	M1035051F	June 2012 production	Not available
V1.01	M1035051E	1st Mass production	Not available

Note: Definition of Availability of RFU via @Remote
“Available”: The firmware can be updated via RFU or SD card.

“Not available”: The firmware can only be updated via SD card.

Version	Modified Points or Symptom Corrected
<i>1.05</i>	<i>Minor bug fixed</i>
1.04	Other changes: 1. The following counter information was added to the Configuration Page: <ul style="list-style-type: none"> - Non-feed jam counter (paper does not reach the registration sensor) - Paper transport/fusing jam counter (paper does not reach the exit sensor) - Fusing/paper exit jam counter (paper stops at the exit sensor or registration sensor) 2. The "Total Counter" values mentioned on machine reports will now use the Engine counters instead of the Controller counters. Note: This is so that Service technicians can confirm more accurate counter figures for replaceable parts (these values cannot be reset to 0).
1.03	Specification change: The default setting for Original Type was changed from Text/Photo Mode to Text Mode to meet the market demand.
1.02	The anti-humidity mode to minimize the paper curl has been added.
V1.01	1st Mass production

Reissued: 08-Nov-12

Model: ME-P1/ME-MF1a/ME-MF1b	Date: 20-Oct-11	No.: RM101004e
-------------------------------------	-----------------	----------------

RTB Reissue

The items in bold italics have been added.

Subject: Firmware Release Note: Engine for China models		Prepared by: M. Ishihara	
From: 3rd Tech Service Sect., MFP/Printer Tech Service Dept.			
Classification:	<input type="checkbox"/> Troubleshooting <input type="checkbox"/> Mechanical <input type="checkbox"/> Paper path <input type="checkbox"/> Product Safety	<input type="checkbox"/> Part information <input type="checkbox"/> Electrical <input type="checkbox"/> Transmit/receive <input checked="" type="checkbox"/> Other (Firmware)	<input type="checkbox"/> Action required <input type="checkbox"/> Service manual revision <input type="checkbox"/> Retrofit information <input checked="" type="checkbox"/> Tier 2

This RTB has been issued to announce the firmware release information for the **Engine for China models**.

Version	Program No.	Effective Date	Availability of RFU
1.05	M1015451H	November 2012 production	Not available
1.04	M1015451G	July 2012 production	Not available
1.03	M1015451F	July 2012 production	Not available
1.02	M1015451E	June 2012 production	Not available
1.01	M1015451D	1st Mass production	Not available

Note: Definition of Availability of RFU via @Remote
"Available": The firmware can be updated via RFU or SD card.

"Not available": The firmware can only be updated via SD card.

Version	Modified Points or Symptom Corrected
1.05	Symptom corrected: 1. SC542/SC545 occur if the main power is turned ON/OFF/ON after replacement to a new NVRAM. Other changes: 1. The occurrence conditions of SC541 were changed so that it is not detected while the machine is in Energy Saver or Sleep mode, a door is open, or an error is occurring.
1.04	Symptom corrected: 1. The paper stuck inside the machine will be ejected out automatically, when open the top cover or power OFF/ON. 2. Machine will eject the paper out when paper size mismatch JAM occurs.
1.03	Symptom corrected: 1. SC542 (C8; Fusing Reload Temperature Error) occurs in areas where the power supply is not stable. 2. Black lines may appear on the printed image due to unexpected static electricity.
1.02	The anti-humidity mode to minimize the paper curl has been added.
1.01	1st Mass production

Model: ME-P1/MF1		Date: 20-Dec-11	No.: RM101005
Subject: Service manual correction		Prepared by: Y. Murata	
From: 3rd Tech Service Sect., MFP/P Tech Service Dept.			
Classification:	<input type="checkbox"/> Troubleshooting <input type="checkbox"/> Part information <input type="checkbox"/> Action required <input type="checkbox"/> Mechanical <input type="checkbox"/> Electrical <input checked="" type="checkbox"/> Service manual revision <input type="checkbox"/> Paper path <input type="checkbox"/> Transmit/receive <input type="checkbox"/> Retrofit information <input type="checkbox"/> Product Safety <input type="checkbox"/> Other (Specification change)		

The Service Manual of ME-P1/MF1 was corrected as follows:

p. 200

C6 => c6 (C was a small letter)

- M102 具有 2 段显示屏[1]。字母编号代码用于指定 SC 代码。例如，“C6”指定“SC101”。（这些 2 位数代码包括在下面的 SC 表中。）出现错误时，报警灯[2]也会亮起。



p. 202

C6 => c6 (C was a small letter)

SC100: 扫描

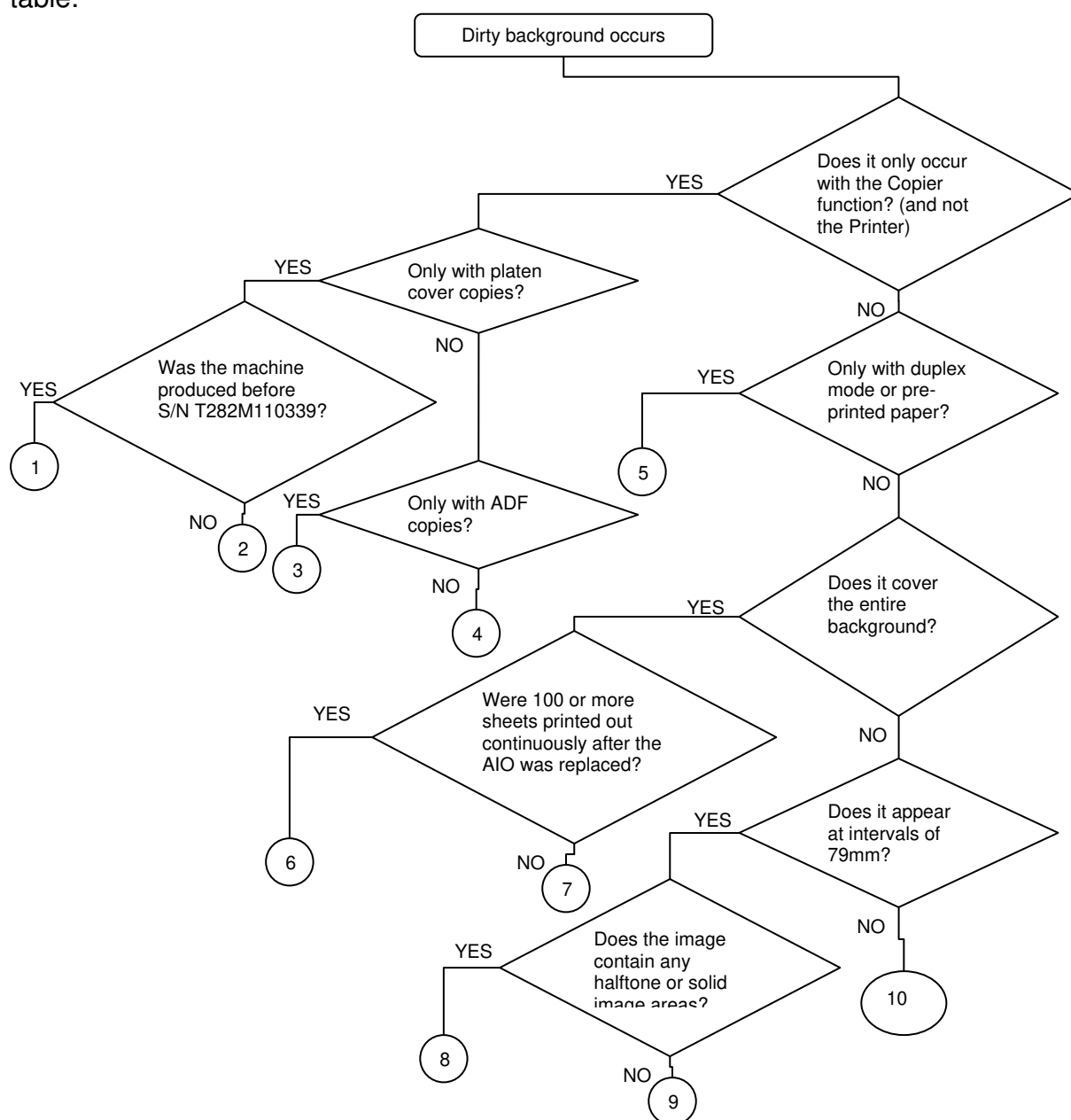
SC101	C6	C	CIS 灯/扫描仪电机错误
			平板扫描仪中的 CIS 或扫描仪电机出现问题： <ul style="list-style-type: none"> • CIS 电源检查之后 • 黑边修正之后 • CIS 未能返回原位之后
			<ul style="list-style-type: none"> • 平板扫描仪电机接头（主板）松动、损坏或不良 • 主板处的 CIS 平面薄膜接头松动、损坏或不良 • CIS 处的 CIS 平面薄膜接头松动、损坏或不良 • 扫描仪电机不良 • CIS 不良

Model: ME-P1/MF1a/MF1b		Date: 22-Feb-12	No.: RM101006
Subject: Troubleshooting Guide for "Dirty Background"		Prepared by: Y. Murata	
From: 3rd Tech Service Sect., MFP/P Tech Service Dept.			
Classification:	<input checked="" type="checkbox"/> Troubleshooting <input type="checkbox"/> Mechanical <input type="checkbox"/> Paper path <input type="checkbox"/> Product Safety	<input type="checkbox"/> Part information <input type="checkbox"/> Electrical <input type="checkbox"/> Transmit/receive <input type="checkbox"/> Other ()	<input type="checkbox"/> Action required <input type="checkbox"/> Service manual revision <input type="checkbox"/> Retrofit information <input checked="" type="checkbox"/> Tier 2

Troubleshooting Guide for "Dirty Background"

Use the following flowchart and table to respond to dirty background and related symptoms reported from the field.

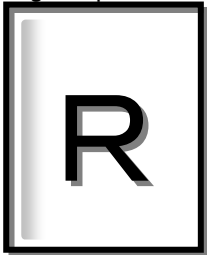
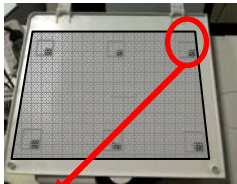
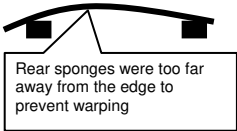
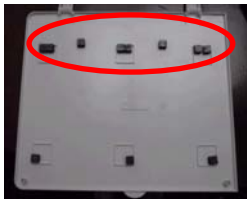
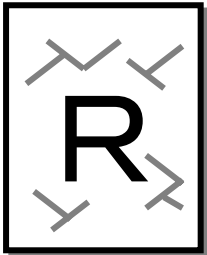
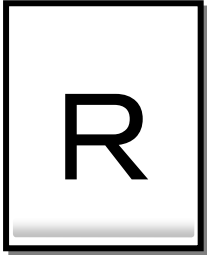
Note: The numbers in the flowchart correspond to the numbers in the "No." column in the table.



Model: ME-P1/MF1a/MF1b

Date: 22-Feb-12

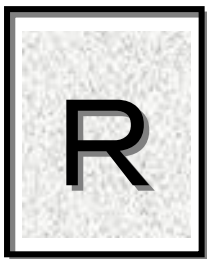
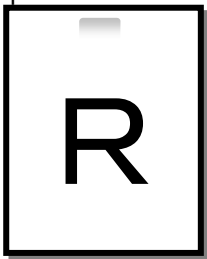
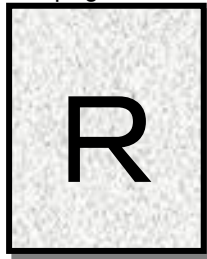
No.: RM101006

No.	Function	Model	Occurrence conditions, other details	Cause	Action
1	Copier	MF1a	<p>Appears on the left edge of the paper when making copies using the platen cover.</p> 	<p>The white plate inside the platen cover warps, which lifts the left edge of the original off the glass.</p>   <p>Rear sponges were too far away from the edge to prevent warping</p>	<p>Replace the platen cover with the modified part (on which the positions and quantity of attachment sponges was changed to prevent warping).</p>  <p>Note:</p> <ul style="list-style-type: none"> ● This change was applied from January 12, 2012 mass-production (T282M110399). ● This change was not applied to machine S/N T282M111332 - T282M111711. However, the white plate is attached correctly in these machines (Quality is good).
2	Copier	MF1a MF1b	<p>Appears along wrinkles in the paper when copying heavily-wrinkled paper</p> 	<p>The focal point of the CIS is relatively shallow, making it difficult to scan wrinkled or creased areas of the original.</p>	<p>Do the following to reduce the degree of dirty background. See the O/I for detailed procedures.</p> <ol style="list-style-type: none"> 1) Set the scanning mode (Original Type) to Text. 2) Decrease the scanning image density
3	Copier	MF1b	<p>Appears at the trailing edge when making copies of stiff paper types using the ADF</p> 	<p>If the paper (original) is very stiff, it will not be close to the scanning glass after passing through the ADF.</p>	<p>When making copies of originals with a relatively high stiffness, scan using the exposure glass (instead of the ADF), or perform the following settings. See the O/I for detailed procedures.</p> <ol style="list-style-type: none"> 1) Set the scanning mode (Original Type) to Text. 2) Decrease the scanning image density.

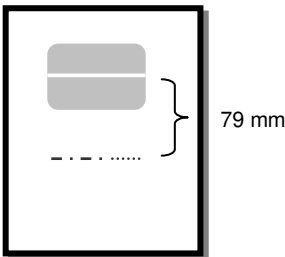
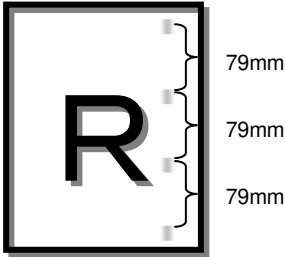
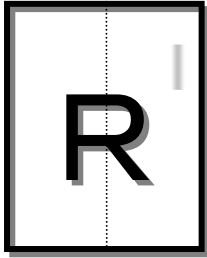
Model: ME-P1/MF1a/MF1b

Date: 22-Feb-12

No.: RM101006

4	Copier	MF1a MF1b	Occurs when making copies of originals with dark backgrounds (Only copied area) 	The scanner detects the background as part of the image.	(Same as No. 2 above)
5	Printer	P1 MF1a MF1b	Appears from the second sheet onward at the center of the leading edge, when making duplex prints or when printing onto pre-printed paper Note: This occurs more easily when there are solid image or halftone areas on the rear side of the paper. 	The rear side of the first sheet (on which the image has already been printed) rubs against the front side of the second sheet. This is a limitation of any machine on which the feed rollers contact the rear side of the paper, and which uses a friction pad paper-separation mechanism. (This also occurs in the RN-P/MF series).	When printing in duplex mode or onto pre-printed paper, feed each sheet individually, one by one.
6	Printer	P1 MF1a MF1b	Occurs when all of the following conditions are met: - The AIO is replaced - After this, more than 100 sheets are printed continually. Note: Dirty background may occur anywhere in the document.	The charge increases under these conditions, which attracts more toner to the paper.	If this occurs, wait a while before using the machine again.
7	Printer	P1 MF1a MF1b	Appears across the entire page. 	1. The charge roller is dirty 2. Humidified paper is used (which increases the charge on the OPC surface)	1. Clean the charge roller 2. Avoid using humidified paper
8	Printer	P1 MF1a	Appears as horizontal bands about 79mm below solid image or	The material of the pressure roller is an insulator, which can	(N/A, as this is a specification limitation)


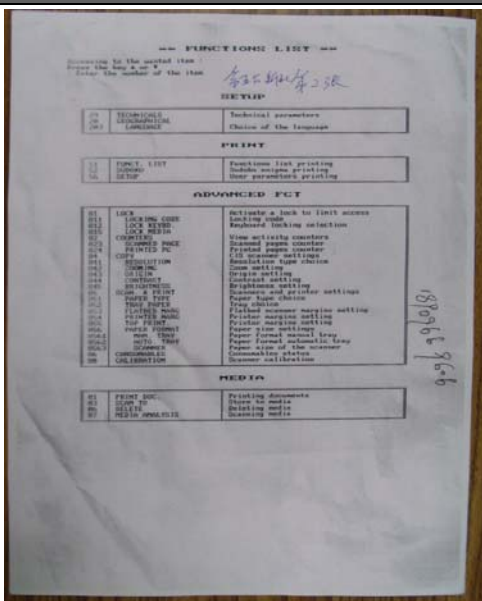



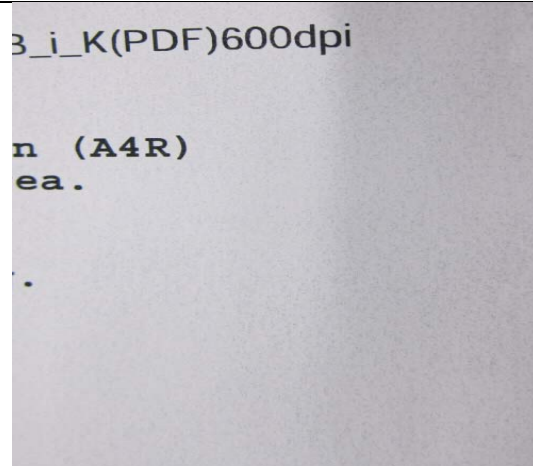
Model: ME-P1/MF1a/MF1b
Date: 22-Feb-12
No.: RM101006

		MF1b	halftone areas 	cause static electricity to build up.	
9	Printer	P1 MF1a MF1b	Appears in the form of black spots at 79mm intervals  <p>Note: It could appear on the left side of the document as well.</p>	Toner builds up on the tips of the fusing stripper pawls, and then drops onto and sticks to the fusing roller.	Print out several pages, which should clear the symptom
10	Printer	P1 MF1a MF1b	Appears intermittently in the form of vertical bands  <p>Note: It could appear on the left side of the document as well.</p>	<ol style="list-style-type: none"> 1. The waste toner is not emptied when the AIO is refilled, making the charge roller dirty. 2. Toner may build up on the fusing stripper pawls, because this model does not have a cleaning mechanism. The pawls then wear down the areas of the fusing roller it is touching, which makes it easier for toner to stick to the roller. 	<ol style="list-style-type: none"> 1. Clean the charge roller and make sure to empty the waste toner receptacle 2. Replace the fusing roller

Model: ME-P1/MF1a/MF1b

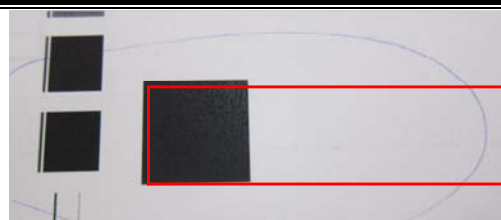
Date: 22-Feb-12

No.: RM101006

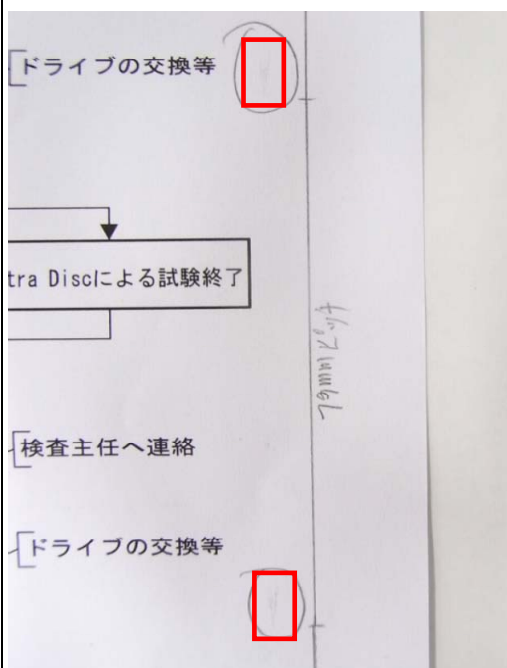
No.	Image Sample	No.	Image Sample
1		2	
3		4	
5		6	

Note: This picture shows the right side of the document

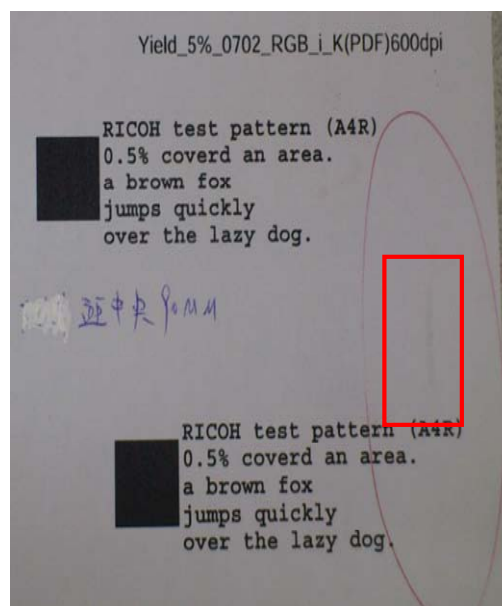
依頼日	2003/11/15									
依頼者	村田 雄一郎		部署	研発 / 海外研究 / 中支 10						
資料提供元	なし / あり		資料入手部門コード	部門コード 0011324						
			部署名	部署名 サービス支援 10						
送付先担当者 担当倉庫部署	Mr. Janji Wookjuki			送付先国名	U.S.A					
送付先会社名	(Mr. Exel-Rich)									
送付先住所										
TEL No.	813-982-2628									
FAX	/ 不要									
関 税	税関番号 / 東京貨物		[基本の市市場種別対象品の関税は、東京貨物となります。]							
送付方法	希望なし / Express / DHL / その他			/			定形郵便 / 郵便			
送付品	品名 (ECCN Code)	数量	使用 機器	原産国	税額	単価	単位 [kg] 1=1kg 個			
	Documents			Japan	15\$	\$ 1,000	-			
	Writing instruments			Japan	15\$	\$ 2,000				
	CD-ROM			Japan	15\$	\$ 3,000				
送付品目録	資料、筆記用具、個人バックアップ等									
貨物の品名 及び数量 等	(X) 60 or 1-15歳に該当する。(X) 1 → ②、NA → ②、年増 → ② ② 16歳に該当する。(X) 15 → ③、NA → ③ ③ 送付品がリコー製品かその部品である。(X) ③ → ④、NA → ④ ④ あるいはリコー製品についての情報である。(X) ④ → ⑤、NA → ⑤ ⑤ 送付先がリコー関連会社である。(X) ⑤ → ⑥、NA → ⑥ ⑥ 送付先が北米製、ロシア、イタリ、イランである。(X) ⑥ → ⑦、NA → ⑦									
送付決定申請 済または、 〇承認	※ () 輸出申請不要			送付決定員確認 () 輸出申請不要 () 輸出申請済 (発行済)						
				確認書						



Note: This picture shows the center of the document



Note: This picture shows the right side of the document



Note: This picture shows the right side of the document

Reissued: 09-Dec-16

Model: ME-P1	Date: 16-Mar-12	No.: RM101007d
--------------	-----------------	----------------

RTB Reissue

The items in ***bold italics*** have been added.

Subject: Firmware Release Note: Controller for EU/Americas/Asia models		Prepared by: Y. Miyamoto	
From: 1st Tech Service Sect., MFP/Printer Tech Service Dept.			
Classification:	<input type="checkbox"/> Troubleshooting <input type="checkbox"/> Mechanical <input type="checkbox"/> Paper path <input type="checkbox"/> Product Safety	<input type="checkbox"/> Part information <input type="checkbox"/> Electrical <input type="checkbox"/> Transmit/receive <input checked="" type="checkbox"/> Other (Firmware)	<input type="checkbox"/> Action required <input type="checkbox"/> Service manual revision <input type="checkbox"/> Retrofit information <input checked="" type="checkbox"/> Tier 2

This RTB has been issued to announce the firmware release information for the **Controller for EU/Americas/Asia models**.

Version	Program No.	Effective Date	Availability of RFU
<i>1.04</i>	<i>M1015071E</i>	<i>December 2016 production</i>	<i>Not available</i>
1.03	M1015071D	February 2013 production	Not available
1.02	M1015071C	November 2012 production	Not available
1.01	M1015071B	June 2012 production	Not available
1.00	M1015071A	1st Mass production	Not available

Note: Definition of Availability of RFU via @Remote
"Available": The firmware can be updated via RFU or SD card.

"Not available": The firmware can only be updated via SD card.

Version	Modified Points or Symptom Corrected
<i>1.04</i>	<i>Minor bug fixed</i>
1.03	Other changes: 1. Change the default value of "Sub paper size" from OFF to ON. *Sub Paper Size: Sets the machine to print onto paper of another size if the specified paper is not loaded in tray. Alternative sizes are preset to A4 and Letter.
1.02	1. The following counter information was added to the Configuration Page: <ul style="list-style-type: none"> - Non-feed jam counter (paper does not reach the registration sensor) - Paper transport/fusing jam counter (paper does not reach the exit sensor) - Fusing/paper exit jam counter (paper stops at the exit sensor or registration sensor) 2. The "Total Counter" values mentioned on machine reports will now use the Engine counters instead of the Controller counters. Note: This is so that Service technicians can confirm more accurate counter figures for replaceable parts (these values cannot be reset to 0).
1.01	The anti-humidity mode to minimize the paper curl has been added.
1.00	1st Mass production

Reissued: 09-Dec-16

Model: ME-MF1a	Date: 16-Mar-12	No.: RM101008d
-----------------------	-----------------	----------------

RTB Reissue

The items in ***bold italics*** have been added.

Subject: Firmware Release Note: Controller for EU/Americas/Asia models		Prepared by: Y. Miyamoto	
From: 1st Tech Service Sect., MFP/Printer Tech Service Dept.			
Classification:	<input type="checkbox"/> Troubleshooting <input type="checkbox"/> Mechanical <input type="checkbox"/> Paper path <input type="checkbox"/> Product Safety	<input type="checkbox"/> Part information <input type="checkbox"/> Electrical <input type="checkbox"/> Transmit/receive <input checked="" type="checkbox"/> Other (Firmware)	<input type="checkbox"/> Action required <input type="checkbox"/> Service manual revision <input type="checkbox"/> Retrofit information <input checked="" type="checkbox"/> Tier 2

This RTB has been issued to announce the firmware release information for the **Controller for EU/Americas/Asia models**.

Version	Program No.	Effective Date	Availability of RFU
<i>1.04</i>	<i>M1015071E</i>	<i>December 2016 production</i>	<i>Not available</i>
1.03	M1025071D	February 2013 production	Not available
1.02	M1025071C	November 2012 production	Not available
1.01	M1025071B	June 2012 production	Not available
1.00	M1025071A	1st Mass production	Not available

Note: Definition of Availability of RFU via @Remote
"Available": The firmware can be updated via RFU or SD card.

"Not available": The firmware can only be updated via SD card.

Version	Modified Points or Symptom Corrected
<i>1.04</i>	<i>Minor bug fixed</i>
1.03	Other changes: 1. Change the default value of "Sub paper size" from OFF to ON. *Sub Paper Size: Sets the machine to print onto paper of another size if the specified paper is not loaded in tray. Alternative sizes are preset to A4 and Letter.
1.02	1. The following counter information was added to the Configuration Page: <ul style="list-style-type: none"> - Non-feed jam counter (paper does not reach the registration sensor) - Paper transport/fusing jam counter (paper does not reach the exit sensor) - Fusing/paper exit jam counter (paper stops at the exit sensor or registration sensor) 2. The "Total Counter" values mentioned on machine reports will now use the Engine counters instead of the Controller counters. Note: This is so that Service technicians can confirm more accurate counter figures for replaceable parts (these values cannot be reset to 0).
1.01	The anti-humidity mode to minimize the paper curl has been added.
1.00	1st Mass production

Reissued: 09-Dec-16

Model: ME-MF1b	Date: 16-Mar-12	No.: RM101009d
-----------------------	-----------------	----------------

RTB Reissue

The items in ***bold italics*** have been added.

Subject: Firmware Release Note: Controller for EU/Americas/Asia models		Prepared by: Y. Miyamoto	
From: 1st Tech Service Sect., MFP/Printer Tech Service Dept.			
Classification:	<input type="checkbox"/> Troubleshooting <input type="checkbox"/> Mechanical <input type="checkbox"/> Paper path <input type="checkbox"/> Product Safety	<input type="checkbox"/> Part information <input type="checkbox"/> Electrical <input type="checkbox"/> Transmit/receive <input checked="" type="checkbox"/> Other (Firmware)	<input type="checkbox"/> Action required <input type="checkbox"/> Service manual revision <input type="checkbox"/> Retrofit information <input checked="" type="checkbox"/> Tier 2

This RTB has been issued to announce the firmware release information for the **Controller for EU/Americas/Asia models**.

Version	Program No.	Effective Date	Availability of RFU
<i>1.04</i>	<i>M1035071E</i>	<i>December 2016 production</i>	<i>Not available</i>
1.03	M1035071D	February 2013 production	Not available
1.02	M1035071C	November 2012 production	Not available
1.01	M1035071B	June 2012 production	Not available
1.00	M1035071A	1st Mass production	Not available

Note: Definition of Availability of RFU via @Remote
"Available": The firmware can be updated via RFU or SD card.
"Not available": The firmware can only be updated via SD card.

Version	Modified Points or Symptom Corrected
<i>1.04</i>	<i>Minor bug fixed</i>
1.03	Other changes: 1. Change the default value of "Sub paper size" from OFF to ON. *Sub Paper Size: Sets the machine to print onto paper of another size if the specified paper is not loaded in tray. Alternative sizes are preset to A4 and Letter.
1.02	Other changes: 1. The following counter information was added to the Configuration Page: <ul style="list-style-type: none"> - Non-feed jam counter (paper does not reach the registration sensor) - Paper transport/fusing jam counter (paper does not reach the exit sensor) - Fusing/paper exit jam counter (paper stops at the exit sensor or registration sensor) 2. The "Total Counter" values mentioned on machine reports will now use the Engine counters instead of the Controller counters. Note: This is so that Service technicians can confirm more accurate counter figures for replaceable parts (these values cannot be reset to 0).
1.01	The anti-humidity mode to minimize the paper curl has been added.
1.00	1st Mass production

Reissued: 08-Nov-12

Model: ME-P1/ME-MF1a/ME-MF1b	Date: 16-Mar-12	No.: RM101010c
-------------------------------------	-----------------	----------------

RTB Reissue

The items in bold italics have been added.

Subject: Firmware Release Note: Engine for EU/Americas/Asia models		Prepared by: M. Ishihara	
From: 3rd Tech Service Sect., MFP/Printer Tech Service Dept.			
Classification:	<input type="checkbox"/> Troubleshooting <input type="checkbox"/> Mechanical <input type="checkbox"/> Paper path <input type="checkbox"/> Product Safety	<input type="checkbox"/> Part information <input type="checkbox"/> Electrical <input type="checkbox"/> Transmit/receive <input checked="" type="checkbox"/> Other (Firmware)	<input type="checkbox"/> Action required <input type="checkbox"/> Service manual revision <input type="checkbox"/> Retrofit information <input checked="" type="checkbox"/> Tier 2

This RTB has been issued to announce the firmware release information for the **Engine for EU/Americas/Asia models**.

Version	Program No.	Effective Date	Availability of RFU
<i>W1.10</i>	<i>M1015452F</i>	<i>November 2012 production</i>	<i>Not available</i>
W1.09	M1015452E	August 2012 production	Not available
W1.08	M1015452D	June 2012 production	Not available
W1.07	M1015452C	1st Mass production	Not available

Note: Definition of Availability of RFU via @Remote
"Available": The firmware can be updated via RFU or SD card.

"Not available": The firmware can only be updated via SD card.

Version	Modified Points or Symptom Corrected
<i>W1.10</i>	<p><i>Symptom corrected:</i></p> <p>1. <i>SC542/SC545 occur if the main power is turned ON/OFF/ON after replacement to a new NVRAM.</i></p> <p><i>Other changes:</i></p> <p>1. <i>The occurrence conditions of SC541 were changed so that it is not detected while the machine is in Energy Saver or Sleep mode, a door is open, or an error is occurring.</i></p>
	<p>Symptom corrected:</p> <p>1. SC542 (C8; Fusing Reload Temperature Error) occurs in areas where the power supply is not stable.</p> <p>Other changes:</p> <p>1. Paper that gets stuck inside the machine will be exited to the exit tray if the top cover is opened or the power is turned OFF/ON.</p> <p>2. Paper will be exited to the exit tray when a paper size mismatch jam occurs.</p> <p>IMPORTANT: An Engine firmware update failure will trigger SC670, which can only be cleared by replacing the main board.</p> <p>Because of this, make sure to do the following:</p> <ul style="list-style-type: none"> - Always update the firmware in READY mode. Copying or printing will cause the update to fail. - Unplug the FAX cable before starting the update (SP100SF only). - Check that the filename is "M1015452E_W1.09.dwn".

Reissued: 08-Nov-12

Model: ME-P1/ME-MF1a/ME-MF1b	Date: 16-Mar-12	No.: RM101010c
------------------------------	-----------------	----------------

Version	Modified Points or Symptom Corrected
	- Do not cut the power, unplug the USB cable, or do any other operation during the update. Note: The update takes about five minutes.
W1.08	The anti-humidity mode to minimize the paper curl has been added.
W1.07	1st Mass production

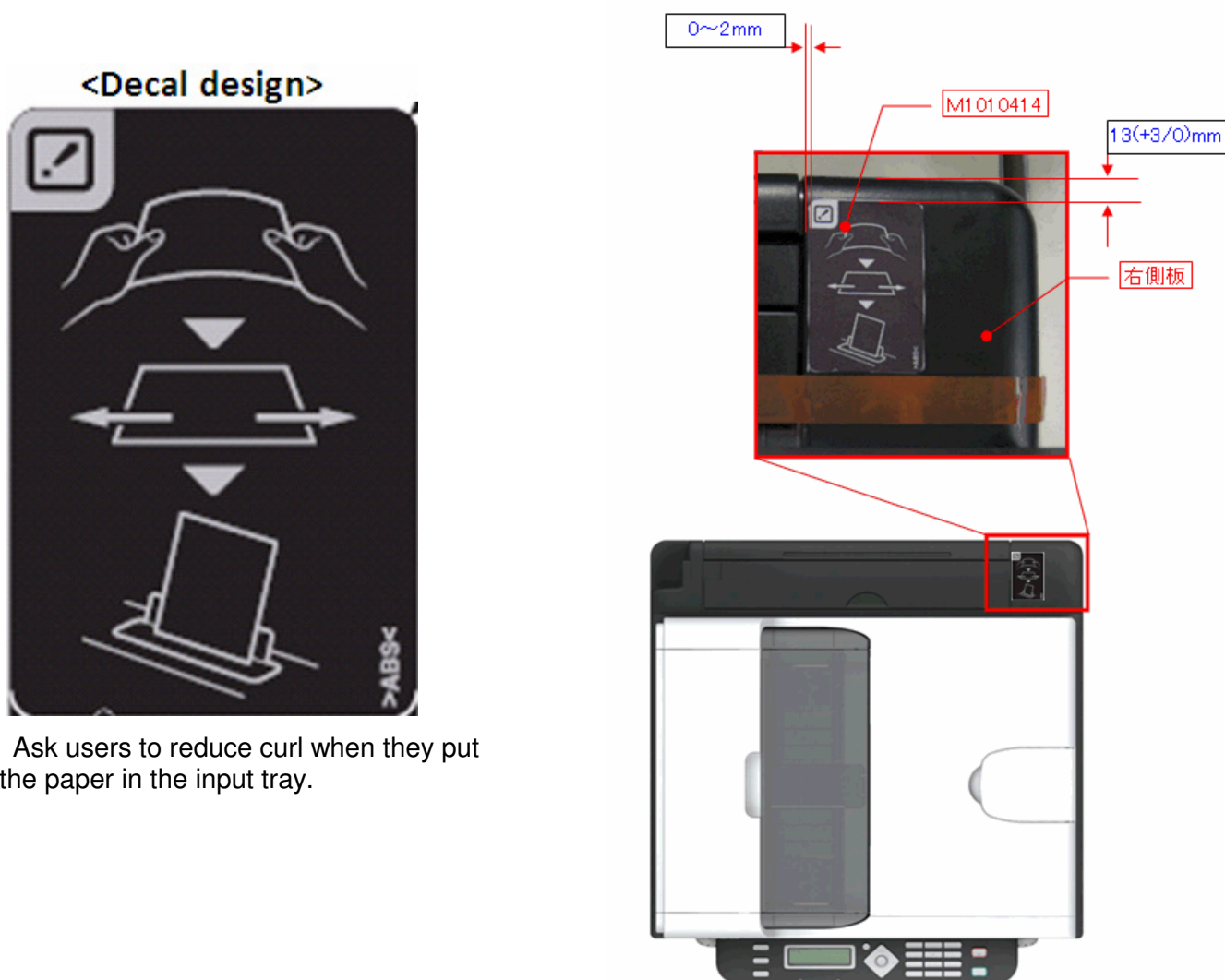
Model: ME-P1/MF1a/MF1b	Date: 14-May-12	No.: RM101011
------------------------	-----------------	---------------

Subject: Additional Decal for M101/M102/M103 (China-Model)		Prepared by: I Soh
From: 3rd Tech Service Sect., MFP/Printer Tech Service Dept.		
Classification:	<input type="checkbox"/> Troubleshooting <input type="checkbox"/> Mechanical <input type="checkbox"/> Paper path <input type="checkbox"/> Product Safety	<input checked="" type="checkbox"/> Part information <input type="checkbox"/> Electrical <input type="checkbox"/> Transmit/receive <input type="checkbox"/> Other (Firmware)
		<input type="checkbox"/> Action required <input type="checkbox"/> Service manual revision <input type="checkbox"/> Retrofit information <input type="checkbox"/> Tier 2

● **A new service part for M101/M102/M103 (China-Model).**

The paper guide decal is now available as a service part to reduce creasing and misfeeds. Please paste it in the following place when needed.

P/N	Description	Q'ty
M1010414	DECAL:PAPER GUIDE	1



Model: ME-P1/MF1a/MF1b	Date: 29-May-12	No.: RM101012
-------------------------------	-----------------	---------------

Subject: Anti-Humidity Mode		Prepared by: M. Ishihara	
From: 3rd Tech Service Sect., MFP/Printer Tech Service Dept.			
Classification:	<input checked="" type="checkbox"/> Troubleshooting <input type="checkbox"/> Mechanical <input type="checkbox"/> Paper path <input type="checkbox"/> Product Safety	<input type="checkbox"/> Part information <input type="checkbox"/> Electrical <input type="checkbox"/> Transmit/receive <input type="checkbox"/> Other (Firmware)	<input type="checkbox"/> Action required <input type="checkbox"/> Service manual revision <input type="checkbox"/> Retrofit information <input type="checkbox"/> Tier 2

Symptom

A paper jam occurs or the paper is wrinkled in high-humidity environments.

Cause

The paper contains too much moisture, which causes it to curl when it passes through the fusing section.

Solution

- Update the Engine firmware **and** Controller firmware together.
- Enable "Anti-humidity Mode".
 - Press the **[Start]** and **[Stop]** keys together for three seconds while the machine **is in the Ready condition**.

Note: The mode will not be enabled if you do this while the machine is warming up, in Energy Saver mode, printing a job, etc. It must be in the Ready condition.
 - When the Alert (red) LED blinks three times, this means the mode has been enabled.

Note:

- Versions, P/N, and other information are listed below.
- After the firmware is updated, the engine is rotated for about 60 seconds in order to warm up the fusing rollers to the target temperature in the anti-humidity mode.

For China

Firmware	Version	Firmware P/N	Release Note RTB	Model (s)
Engine	1.02	M1015451E	RM101004b	Me-P1/MF1a/MF1b
Controller	1.02	M1025051F	RM101002b	Me-MF1a
Controller	1.02	M1035051F	RM101003b	Me-MF1b
Controller	1.02	M1015051F	RM101001b	Me-P1

For EU, NA, Asia

Firmware	Version	Firmware P/N	Release Note RTB	Model (s)
Engine	W1.08	M1015452D	RM101010a	Me-P1/MF1a/MF1b
Controller	1.01	M1025071B	RM101008a	Me-MF1a
Controller	1.01	M1035071B	RM101009a	Me-MF1b
Controller	1.01	M1015071B	RM101007a	Me-P1

Model: ME-P1/MF1a/MF1b

Date: 12-Jun-12

No.: RM101013

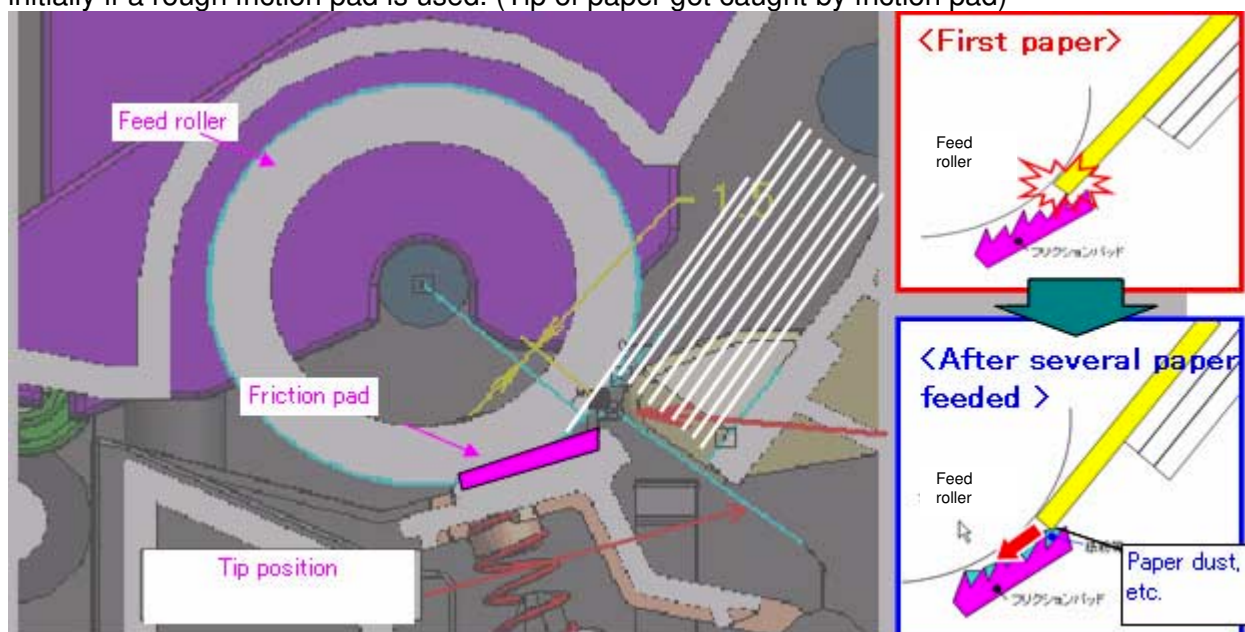
Subject: Paper misfeed		Prepared by: I. Soh	
From: 3rd Tech Service Sect., MFP/Printer Tech Service Dept.			
Classification:	<input checked="" type="checkbox"/> Troubleshooting	<input type="checkbox"/> Part information	<input type="checkbox"/> Action required
	<input type="checkbox"/> Mechanical	<input type="checkbox"/> Electrical	<input type="checkbox"/> Service manual revision
	<input type="checkbox"/> Paper path	<input type="checkbox"/> Transmit/receive	<input type="checkbox"/> Retrofit information
	<input type="checkbox"/> Product Safety	<input type="checkbox"/> Other (Firmware)	<input type="checkbox"/> Tier 2

Symptom

Paper misfeed will occur in some new machines for the first paper feed. The initial jam rate depends on the type of paper, and the jam rate suddenly drops after making prints.

Cause

There is variation in roughness of the friction pad surface and some machines show high jam ratio initially if a rough friction pad is used. (Tip of paper got caught by friction pad)



*Paper dust will make the surface become smooth after several sheets of paper have been fed.

**Permanent countermeasure will be applied from July production. The material of the pad will be changed.

Solution

To call center operators:
Please help customers with troubleshooting.

First, please ask the user to refer to the User Guide and follow the solutions in

6. Troubleshooting

Paper Feed Problems

- .Paper does not feed smoothly
- .Paper jams occur frequently.

If the paper misfeed problem continues, please suggest

- a. Try removing several sheets of paper from the tray.
- b. Try resetting the paper upside down in the tray.
- c. Try printing 5 or 6 pages to see if the problem doesn't occur anymore.

Model: ME-P1/MF1a/MF1b
Date: 27-Sep-12
No.: RM101014

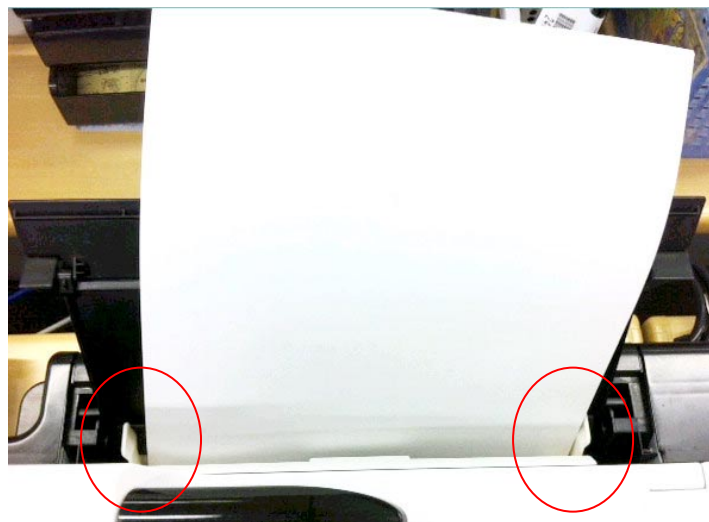
Subject: Trays modified for avoiding paper feed jam and skew		Prepared by: I. Soh	
From: 3rd Tech Service Sect., MFP/Printer Tech Service Dept.			
Classification:	<input checked="" type="checkbox"/> Troubleshooting	<input checked="" type="checkbox"/> Part information	<input type="checkbox"/> Action required
	<input type="checkbox"/> Mechanical	<input type="checkbox"/> Electrical	<input type="checkbox"/> Service manual revision
	<input type="checkbox"/> Paper path	<input type="checkbox"/> Transmit/receive	<input type="checkbox"/> Retrofit information
	<input type="checkbox"/> Product Safety	<input type="checkbox"/> Other (Firmware)	<input checked="" type="checkbox"/> Tier 2

Symptom

1. A paper jam or paper wrinkling may occur if curled paper is loaded in the paper tray.



2. A paper feed jam may occur if the side fence is not locked tightly in place.



1

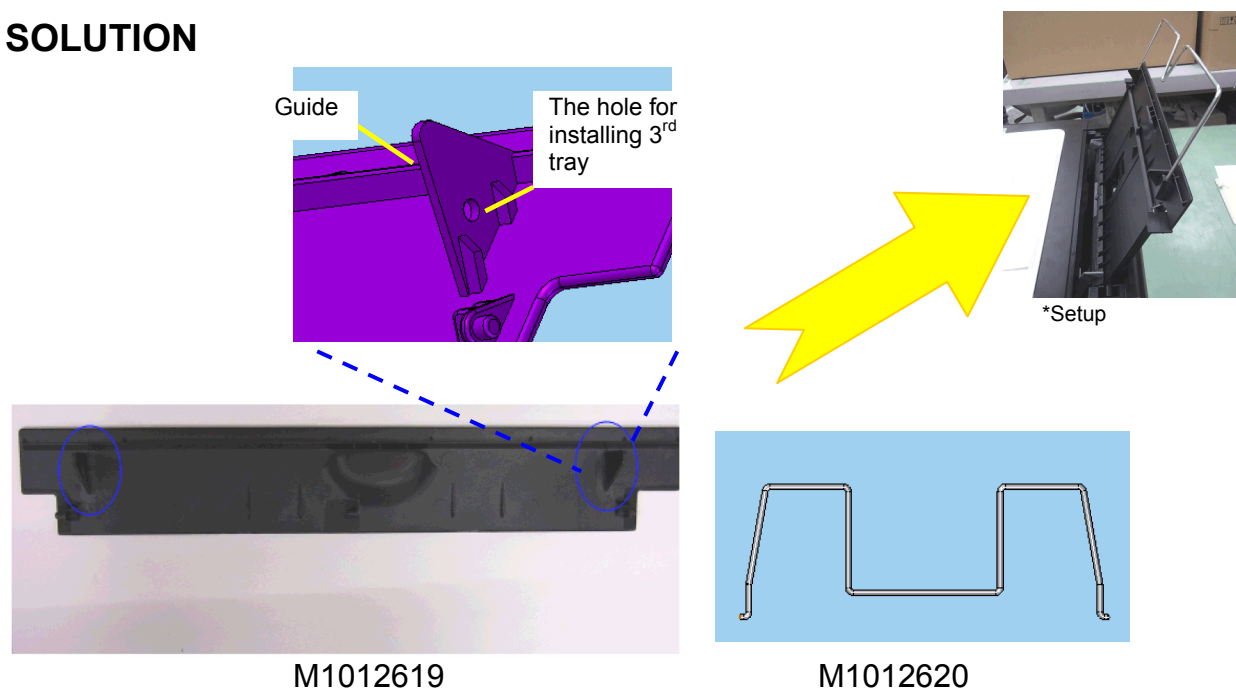
CAUSE

1. The paper absorbs moisture from the air, most easily during rainy/wet seasons
2. The loose side fences allow the paper to move from its parallel (straight) orientation.

Model: ME-P1/MF1a/MF1b

Date: 27-Sep-12

No.: RM101014

SOLUTION


Install the following if the symptom occurs:

1. Extension tray: Two guides were added, to minimize paper skew.
2. A third extension tray was added to minimize paper curl.

Note: This is a metal wire extension that is attached to the upper extension tray. It can be folded up and stored together with the tray.

See the procedure below.

Old P/N	New P/N	Description	Interchangeability	Quantity
M1012609	M1012619	EXTENSION TRAY: UPPER:MANUAL FEED	X/O	1
-	M1012620	EXTENSION TRAY: PAPER FEED:NO.3	-	1

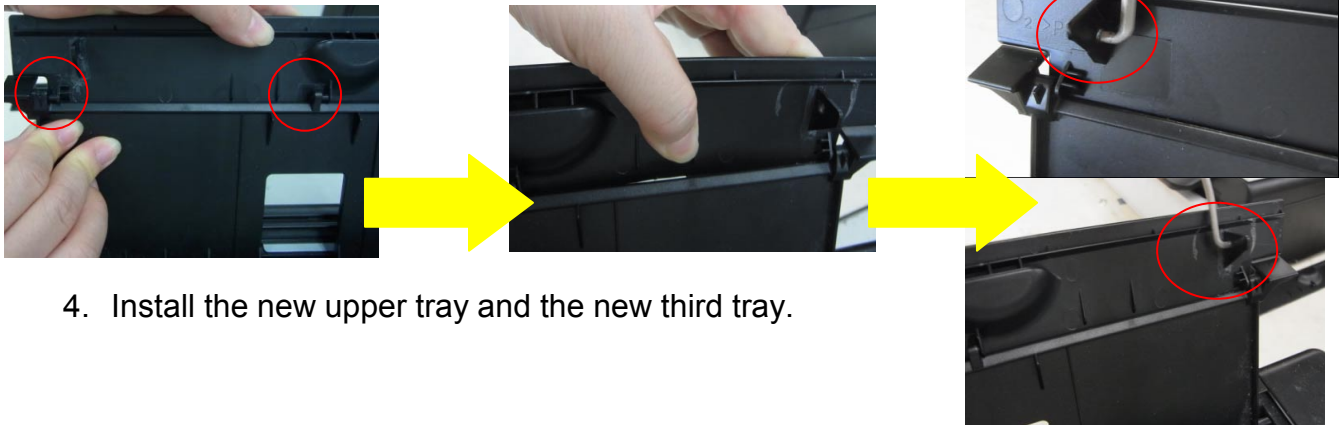
Cut-in S/N

Model	Name	EDP	Cut-in SN
M10117	SP 100 e	406943	T272M760001~
M10127	SP 100 e	406946	T272M770001~
M10121	SP 100	406916	TBA
M12117	SP 100	407028	T382M760001~
M12127	SP 100	407031	T382M770981~
M10217	SP 100SU e	406944	T282M760001~
M10227	SP 100SU e	406947	T282M770001~
M10221	SP 100SU	406917	TBA
M12217	SP 100SU	407029	T392M950001~
M12227	SP 100SU	407032	T392M770001~
M10317	SP 100SF e	406945	T292M650001~
M10327	SP 100SF e	406948	T292M770001~
M10321	SP 100SF	406918	TBA
M12317	SP 100SF	407030	T402M760001~
M12327	SP 100SF	407033	T402M770001~

*Some production before Cut-in SN may have new tray set.

Procedure

1. Pull the tray fully out, and carefully bend the upper tray.
2. Release the axle on the right side.
3. Slide the whole upper tray to the right and remove it.



4. Install the new upper tray and the new third tray.

Model: ME-P1/MF1a/MF1b (<u>For China only</u>)	Date: 22-Oct-12	No.: RM101015
---	-----------------	---------------

Subject: Power Supply Cord (Inlet type)		Prepared by: M. Ishihara	
From: 3rd Tech Service Sect., MFP/Printer Tech Service Dept.			
Classification:	<input type="checkbox"/> Troubleshooting <input type="checkbox"/> Mechanical <input type="checkbox"/> Paper path <input type="checkbox"/> Product Safety	<input checked="" type="checkbox"/> Part information <input type="checkbox"/> Electrical <input type="checkbox"/> Transmit/receive <input type="checkbox"/> Other ()	<input type="checkbox"/> Action required <input type="checkbox"/> Service manual revision <input type="checkbox"/> Retrofit information <input type="checkbox"/> Tier 2

Old P/N	New P/N	Description	Interchangeability	Q'ty
M1011251	M1011252	Cover: Side Plate: Left: NA	X/X	1
M1021251	M1021252	Cover: Side Plate: Left: WW:M102/M103	X/X	1
-	M1015799	Power Supply Cord: CHN	-	1

Change: The power supply cord was changed to an inlet type. In accordance with this, the shape of the left plate cover was changed.

Reason: To meet requests from the field.

Important: The old parts and new parts are **not** interchangeable (X/X).

Cut-in S/N

Model	Name	EDP	Cut-in SN
M10121	SP 100	406916	T272M810549 -
M10221	SP 100SU	406917	T282M810126 -
M10321	SP 100SF	406918	T292M811533 -

Model: ME-P1/MF1a/MF1b	Date: 24-Jan-13	No.: RM101016
-------------------------------	-----------------	---------------

Subject: PN changed: ADF ass'y; Friction PAD ass'y and compressionspring		Prepared by: I. Soh	
From: 3rd Tech Service Sect., MFP/Printer Tech Service Dept.			
Classification:	<input type="checkbox"/> Troubleshooting <input type="checkbox"/> Mechanical <input type="checkbox"/> Paper path <input type="checkbox"/> Product Safety	<input checked="" type="checkbox"/> Part information <input type="checkbox"/> Electrical <input type="checkbox"/> Transmit/receive <input type="checkbox"/> Other ()	<input type="checkbox"/> Action required <input type="checkbox"/> Service manual revision <input type="checkbox"/> Retrofit information <input type="checkbox"/> Tier 2

ADF ass'y:

Change: The part number of the ADF assembly was changed.

Old P/N	New P/N	Description	Interchangeability	Q'ty
M1031615	M1031619	ADF:ASS'Y	X/O	1

Reason: The ADF frame is enhanced to prevent frame deformation in high temperature environments. (Some deformed ADFs may cause misfeeds.)

Cut-in S/N

Model	Name	EDP	SN(Original)
M10317	SP 100SF e	406945	T292M650001~
M10327	SP 100SF e	406948	T292M570001~
M12317	SP 100SF	407030	T402M760022~
M12327	SP 100SF	407033	T402M770001~

Model: ME-P1/MF1a/MF1b

Date: 24-Jan-13

No.: RM101016

Friction Pad Ass'y and Compression Spring:

Change: The part number of the ADF assembly was changed.

Old P/N	New P/N	Description	Interchangeability	Q'ty
M1012560	M0122816	FRICITION PAD:HOLDER:MANUAL FEED:ASS'Y	X/O	1
M1012562	M1012563	COMPRESSION SPRING:SEPARATION	X/O	1

Reason: To improve paper feed performance. (Please refer to RM101013)

Cut-in S/N

Model	Name	EDP	SN(Original)
M10117	SP 100 e	406943	T272M950001~
M10127	SP 100 e	406946	T272M971421~
M12117	SP 100	407028	T382M950001~
M12127	SP 100	407031	T382M970368~
M10217	SP 100SU e	406944	T282M950001~
M10227	SP 100SU e	406947	T282M970545~
M12217	SP 100SU	407029	T392M950001~
M12227	SP 100SU	407032	T392M970152~
M10317	SP 100SF e	406945	All have new parts
M10327	SP 100SF e	406948	T292M970248~
M12317	SP 100SF	407030	T402M950001~
M12327	SP 100SF	407033	T402M970001~

Model: ME-MF1a	Date: 18-Sep-14	No.: RM101017
-----------------------	-----------------	---------------

Subject: PN change info.		Prepared by: Takuma. Sakakibara	
From: 3rd Tech Service Sect., MFP/P Tech Service Dept.			
Classification:	<input type="checkbox"/> Troubleshooting <input type="checkbox"/> Mechanical <input type="checkbox"/> Paper path <input type="checkbox"/> Product Safety	<input checked="" type="checkbox"/> Part information <input type="checkbox"/> Electrical <input type="checkbox"/> Transmit/receive <input type="checkbox"/> Other ()	<input type="checkbox"/> Action required <input type="checkbox"/> Service manual revision <input type="checkbox"/> Retrofit information <input type="checkbox"/> Tier 2

PN changed (M102-17/27):

Description	Old PN	New PN	Quantity	Interchangeability	Reason
TRAY:NO.1:PAPER EXIT UNIT:MFA	M1024490	M1024470	1	x/o	Reinforcing strength