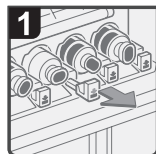


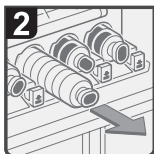
# Replacing Toner

Please note the following corrections to the manuals for this machine.

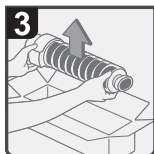
## Error



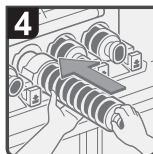
- Open the cover of the toner area.
- Pull out the lever.



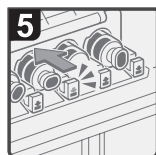
- Carefully remove the toner.



- Take the new toner out of its box.



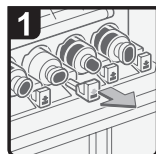
- Insert the new toner, and push it in until the lever clicks.



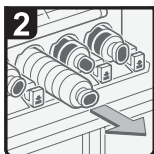
- Close the cover.

BJU001S

## Correction



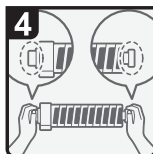
- Open the cover of the toner area.
- Pull out the lever.



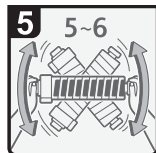
- Carefully remove the toner bottle.



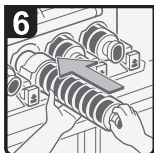
- Take the new toner bottle out of its box.



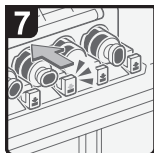
- Hold both ends of the toner bottle firmly.



- Shake the toner bottle 5 to 6 times.



- Insert the new toner bottle.



- Push the new toner bottle until the lever clicks.
- Close the cover.

BXS003S

