



Color Server Pro C900



Welcome

© 2008 Electronics for Imaging, Inc. The information in this publication is covered under [Legal Notices](#) for this product.

45074432

10 June 2008





## WELCOME

This *Welcome* document provides information about system requirements and an overview of how to set up the Color Server Pro C900 so that you can begin printing. It describes the initial tasks you must perform and points you to sections in the user documentation where the procedures are described in detail. This document also provides a description of the user documents on the User Documentation CD and instructions on printing them.

This document assumes that you have already installed the printer components. Details about the printer, the network, remote computers, software applications, and Microsoft Windows are beyond the scope of this document.

## Terminology and conventions

This document uses the following terminology and conventions.

Term or convention	Refers to
Aero	Pro C900 (in illustrations and examples)
Mac OS	Apple Mac OS X
Printer	Printer Main Unit
Pro C900	Color Server Pro C900
Titles in <i>italics</i>	Other documents in this set
Windows	Microsoft Windows 2000, Windows XP, Windows Server 2003, Windows Vista
	Topics for which additional information is available by starting Help in the software
	Tips and information
	Important information
	Important information about issues that can result in physical harm to you or others

## About the documentation

This document is part of a set provided to users and system administrators of the Pro C900. The documents are on the User Documentation CD in PDF (Portable Document Format). These files can be viewed online or printed using Adobe Reader. When viewed online, these files contain links and cross-references that allow you to quickly and easily locate needed information. For more information, see [“Installing and using Adobe Reader”](#) on page 5.

The following comprise the documentation set for your Pro C900:

- *Welcome* provides an introduction to the Pro C900 and the user documentation.
- [Configuration and Setup](#) explains configuration and administration of the Pro C900 for the supported platforms and network environments. It also includes guidelines for providing printing services to users.
- [Printing from Windows](#) and [Printing from Mac OS](#) describe how to install the printer drivers on Windows and Mac OS computers, establish printing connections for different networks, and begin printing from users' computers. Each document also describes the installation and use of print-related utilities, such as Job Monitor and Printer Delete Utility.
- [Print Options](#) provides information about print options for the Pro C900. This document describes print options and features that you access from the printer driver, Command WorkStation job overrides, and Hot Folders job properties.
- [Utilities](#) describes how to install, configure, and use the software utilities included on the User Software DVD.
- [Color Printing](#) explains how to manage color output on the Pro C900. This document provides information about ColorWise Pro Tools, including how to calibrate the Pro C900 and set ColorWise print options from Windows and Mac OS computers.
- [Graphic Arts Package](#) addresses the specific needs and requirements of graphic arts professionals and commercial print shops. It explains the Graphic Arts Package (GAP) and GAP Premium Edition features.
- [Fiery Color Reference](#) provides an overview of color management concepts and workflows, and describes how to manage color from various applications.
- [Workflow Examples](#) explains complicated printing scenarios and provides cross-references to relevant information in the documentation set.
- [Variable Data Printing](#) supplements the information in [Workflow Examples](#) with reference information about variable data printing (VDP). This document provides an overview of FreeForm and explains where to set FreeForm options.
- [Glossary](#) provides definitions for popular color concepts, printing applications, and printing terms used in the documentation set.
- [Release Notes](#) provide last-minute product information and workarounds for some of the problems you may encounter.

## About Help



Most of the user software, utilities, and printer drivers contain Help that is accessible from Help buttons or the main toolbar menus. Help provides detailed procedures on using the application and, in some cases, provides additional detail. The documentation refers you to Help for more information, as appropriate.

## Installing and using Adobe Reader

For your convenience, the current version of Adobe Reader for Windows and Mac OS X is included on the User Documentation CD. This version features enhanced capabilities for full rules-based search across the entire documentation set. We strongly suggest that you install this version of Reader to take advantage of these capabilities, unless you have installed the equivalent version of Adobe Acrobat.

---

### TO INSTALL ADOBE READER

- 1 **Insert the User Documentation CD into the CD-ROM drive of your computer.**
- 2 **Double-click the CD icon.**
- 3 **Open the Adobe Reader folder.**
- 4 **Open the folder for your platform and double-click the installer file within (.exe for Windows, .dmg for Mac OS X).**
- 5 **Follow the on-screen installation instructions.**

### Using Adobe Reader

View or print the PDF files provided on the User Documentation CD using Adobe Reader (or Acrobat). After you install Reader, you can double-click a PDF icon to open the file. Note specifically the advanced search capability of the version of Reader that is provided on this User Documentation CD. You can search for a word or phrase across the Pro C900 documentation set by examining all the documents within a specific language folder on the User Documentation CD. For information about using this and other features of Reader, see the Help that accompanies the application.

**NOTE:** You can view the documentation from the CD or copy the language folder to your desktop. If you copy the files to your computer, keep all the files in the language folder and do not rename the files, or the cross-reference links will not work properly.

## BASIC STEPS TO PRINT

The following section includes a basic workflow for setting up your Pro C900 in order to print documents. It takes you from printing a Configuration page and configuring Setup to installing printer drivers to print a job. Detailed instructions for all these procedures are found in other documents in the user documentation set. For a summary of supported Pro C900 documents, see [page 4](#).

These instructions assume that a service technician has unpacked and connected the Pro C900 and that the Pro C900 and printer are powered on. In some cases, initial print device settings may be required. See [Configuration and Setup](#).

The following steps assume that you are adding the Pro C900 to a TCP/IP network that includes Windows XP user computers. Although this example is specific to a Windows XP TCP/IP environment, users in other computer environments may also benefit from these instructions.

## Step 1

### Print a Configuration page from the printer display panel

Print the Configuration page and note the Pro C900 name and the IP address. When you perform Pro C900 Setup and install the printer driver, you will need to reference this information.

- 1 Make sure that the information screen on the printer display panel reads Idle.
- 2 On the touch screen, press the Fiery tab.
- 3 Press Printable Info.
- 4 Press Configuration and press OK to confirm to print the page.



- 5 Review the default Pro C900 settings and determine if they are compatible with your network environment.

If you change these settings, print another Configuration page to verify your changes.

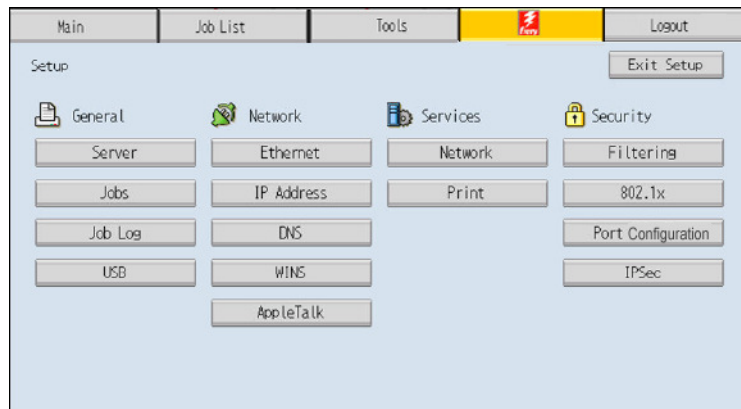
## Step 2

### Set up the Pro C900 at the printer display panel

- 1 Make sure that the information screen on the printer display panel reads Idle.
- 2 On the touch screen, press the Fiery tab.
- 3 Press Setup.
- 4 Press the Login button and log on as Administrator with the appropriate password.

For information about password requirements and the default administrator password, see [Configuration and Setup](#).

- 5 At the main Setup window, press the button for the Setup that you want to access.



If your network uses DHCP, the Pro C900 acquires the IP address automatically. Otherwise, enter the Pro C900 address.

- 6 Press Exit Setup.
- 7 Press Reboot Now to apply your changes.

Print a Configuration page to confirm changes to Setup (see [Step 1](#)).

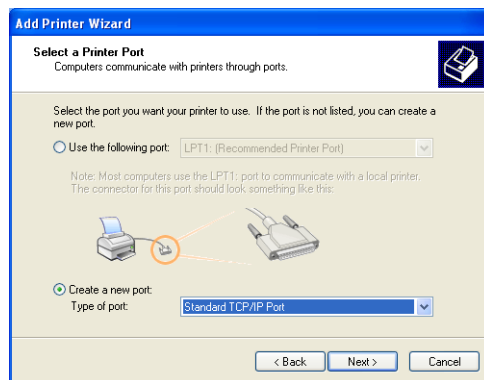


## Step 3

### Install Postscript printer drivers on user computers for TCP/IP printing

From a user's Windows XP computer:

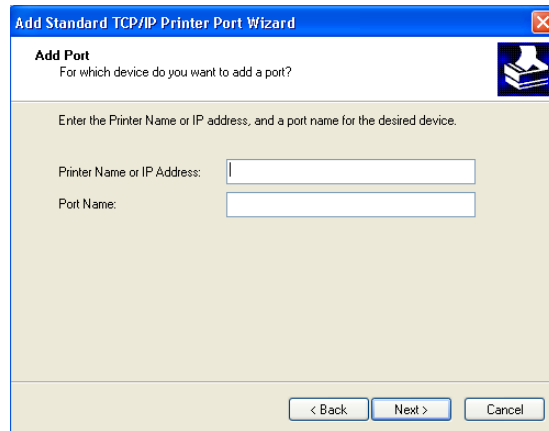
- 1 Click Start and choose Printer and Faxes.
- 2 Click Add a printer.
- 3 Click Next.
- 4 Select "Local printer attached to this computer" and click Next.
- 5 Select Create a new port, choose Standard TCP/IP Port, and then click Next.



The Add Standard TCP/IP Printer Port Wizard dialog box appears.

- 6 Click Next.

- 7 Type the Pro C900 IP address or DNS name and click Next.**



- 8 If the Standard TCP/IP Port Wizard window appears, select the Device Type and click Next.**
- 9 Click Finish.**
- 10 Click Have Disk in the dialog box displaying lists of manufacturers and printers.**
- 11 Insert the User Software DVD into the DVD drive of your computer and browse to the English\Prntdrv\Ps\_drvr\Win\_2K\_XP\_VISTA folder.**
- Make sure that Oemsetup.inf or Oemsetup is selected, click Open, and then click OK.
- You can also download printer drivers from the Download WebTool.
- 12 Select the Pro C900 printer driver as your printer and click Next.**
- 13 Type a name for the Pro C900 in the Printer name field, indicate whether you want to make it the default printer, and then click Next.**
- 14 Select Do not share this printer and click Next.**
- 15 Select No to printing a Test Page, click Next, and then click Finish.**

The necessary files are installed on your hard disk. When installation is complete, the Printers window appears, with an icon for the newly installed printer.

For more information about installing Windows printer drivers, see [Printing from Windows](#).

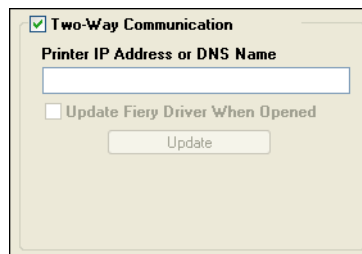
For information about installing Mac OS printer drivers, see [Printing from Mac OS](#).

## Step 4

### Update the printer driver to include Pro C900 options

From a user's Windows XP computer:

- 1 Click Start and choose Printers and Faxes.
- 2 In the Printers window, select the Pro C900 printer driver icon.
- 3 Choose Properties from the File menu.
- 4 Click the Configuration tab.
- 5 Select Two-Way Communication.



- 6 Type the Pro C900 IP address or DNS name.
- 7 Select Update Fiery Driver When Opened to display the printer's current default settings when the printer driver is opened.
- 8 Click Update.

Options such as finishing units that are installed on the Pro C900 are displayed in the printer driver and are available the next time you print a job.

- 9 Click OK.

For more information about updating Windows printer drivers, see [Printing from Windows](#).

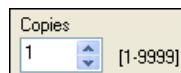
For information about updating Mac OS printer drivers, see [Printing from Mac OS](#).

## Step 5

### Print a job

From a user's Windows XP computer:

- 1 From your application, choose **Print from the File menu**.
- 2 Select the **Pro C900 printer driver** and click **Properties**.
- 3 Specify **Pro C900 job options**, such as **Copies** and finishing options, and then click **OK**.

A screenshot of a 'Copies' dialog box. It features a text input field containing the number '1', followed by a small square button with up and down arrows, and a range indicator '[1-9999]'.

- 4 Click **OK** again.

For information about printing jobs from a Windows computer, see [Printing from Windows](#).

For information about printing jobs from a Mac OS computer, see [Printing from Mac OS](#).



After completing the basic steps to print, you may want to explore additional topics, depending on your printing environment. For example, creating secure user groups and assigning user passwords (see [WebTools Configure Help](#)) or managing and editing jobs submitted to the Pro C900 using utilities such as Command WorkStation (see [Utilities](#)).

## System requirements for user computers

To install the Pro C900 user software on a Windows or Mac OS computer, the computer must be equipped with a built-in or external DVD drive. The following table lists the minimum system requirements.

Minimum requirements for	Windows 2000/XP/Server 2003/Vista	Mac OS
Operating system	<p>The following Windows versions (with latest service packs) are supported:</p> <ul style="list-style-type: none"> <li>• Windows 2000 Professional</li> <li>• Windows 2000 Server</li> <li>• Windows 2000 Advanced Server</li> <li>• Windows XP Home, 32-bit</li> <li>• Windows XP Professional, 32-bit and 64-bit</li> <li>• Windows Server 2003, Standard Edition, 32-bit</li> <li>• Windows Server 2003, Enterprise Edition, 32-bit</li> <li>• Windows Server 2003, Datacenter Edition, 32-bit</li> <li>• Windows Vista, Home Basic Edition, 32 and 64-bit</li> <li>• Windows Vista, Home Premium Edition, 32 and 64-bit</li> <li>• Windows Vista, Ultimate Edition, 32 and 64-bit</li> <li>• Windows Vista, Business Edition, 32 and 64-bit</li> <li>• Windows Vista, Enterprise Edition, 32 and 64 bit</li> <li>• Windows Vista, 64-bit (supported for Windows printer drivers and the Printer Delete Utility only)</li> </ul>	<p>Mac OS X v10.3.9 or later</p> <ul style="list-style-type: none"> <li>• Mac OS 10.3.9 (for PowerPC-based Mac OS computers)</li> <li>• Mac OS 10.4.x and later (for PowerPC and Intel-based Mac OS computers)</li> </ul>
Memory for printing and utilities	256MB of RAM for printing and operating utilities (512MB recommended)	
Networking protocol	TCP/IP	TCP/IP, EtherTalk, and AppleTalk
Networking protocol for Fiery utilities	TCP/IP	TCP/IP, EtherTalk, and AppleTalk

Minimum requirements for	Windows 2000/XP/Server 2003/Vista	Mac OS
WebTools	Java-enabled web browser: <ul style="list-style-type: none"> <li>• Mac OS X: Safari v1.2 or later</li> <li>• Windows: Internet Explorer 6 and 7, Firefox v2.0</li> </ul> <b>NOTE:</b> Portions of WebTools require Java JVM v1.5 browser support. <b>NOTE:</b> Microsoft releases frequent updates to Internet Explorer. Because support cannot be guaranteed for all versions, use the versions specified for best results. A monitor and video memory that supports 16-bit color at a minimum resolution of 800x600 A TCP/IP-enabled network and the Pro C900 IP address or DNS name Web Services enabled on the Pro C900	
Command WorkStation	Windows-based computer with a 1.0GHz or greater Pentium III processor	At a minimum, an 800MHz Macintosh G3  (Intel-based Mac OS computers are supported)
	200MB available hard disk space for installation	80MB available hard disk space for installation  500MB is recommended for writing full previews of raster files and handling large PS or PDF files
	256MB of RAM	
	A monitor that supports 16-bit color at a minimum resolution of 1024x768 Video adapter card with 2MB of video memory TCP/IP networking protocol installed	
	DVD drive	
Impose on Command WorkStation	In addition to requirements for Command WorkStation: <ul style="list-style-type: none"> <li>• Windows-based computer with 333MHz Pentium processor</li> <li>• Dongle to be installed on USB port for every client workstation</li> <li>• Acrobat/PitStop software</li> </ul> <b>NOTE:</b> Impose is supported on Windows 2000/XP, and Windows Vista, 32-bit version.	

## Other network requirements

---

UNIX (TCP/IP) workstation	Standard TCP/IP connectivity
	TCP/IP printing software that conforms to RFC1179 (Berkeley lpd protocol)
	Sun OS 4.1.3 or later
	Red Hat Linux 9 or later
	Turbolinux 7 or later
	Solaris 9 or later

---

## Shutting down, rebooting, and restarting the Pro C900

Generally, you can leave the Pro C900 and the printer running all the time. This section describes how to shut down, reboot, and restart the Pro C900 when necessary.

### Shutting down the Pro C900

When you need to shut down the Pro C900, fonts downloaded to the Pro C900 are not deleted. Jobs in the Hold and Print queues and jobs that have been processed but not printed are not deleted and are available for printing when you reboot or restart the Pro C900.

---

#### TO SHUT DOWN THE PRO C900

- 1 Make sure that the Pro C900 is not receiving, processing, or printing any files.**  
If the system has just finished processing, wait at least five seconds after the system reaches Idle before beginning the shutdown procedure.
- 2 At the printer, press the Print button.**
- 3 At the printer display panel, press the Fiery button.**
- 4 Select Restart Fiery.**
- 5 Select Shut Down and press OK.**
- 6 Press the Operation switch on the printer display panel.**
- 7 Turn off the printer using the main power switch on the printer.**

### Rebooting or restarting the Pro C900

**Restart System** reboots the Pro C900.

**Restart Fiery Service** resets the Pro C900 system software, but does not reboot the entire system. Network access to the Pro C900 is temporarily interrupted and all currently processing jobs are terminated.

---

**TO REBOOT OR RESTART THE PRO C900**

- 1 Make sure that the Pro C900 is not receiving, processing, or printing any files.**

If the system has just finished processing, wait at least five seconds after the system reaches Idle before beginning the shutdown procedure.

- 2 At the printer, press the Print button.**
- 3 At the printer display panel, press the Fiery button.**
- 4 Select Restart Fiery.**
- 5 Select Restart System or Restart Fiery Service, and press OK.**

The Pro C900 will restart after shutting down the Pro C900 hard disk.



Printed in Japan  
D016-7100A

