

Notes for Users

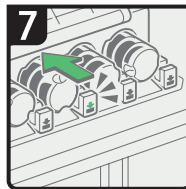
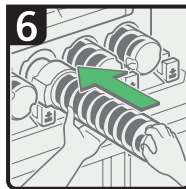
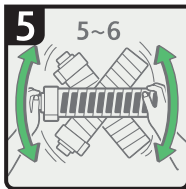
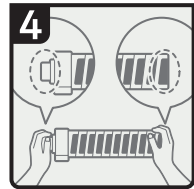
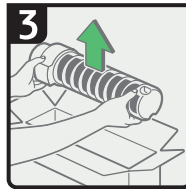
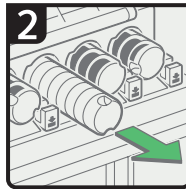
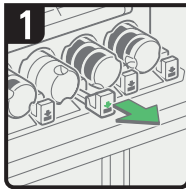
The machine's specifications and descriptions in the manuals that are provided with the machine should be changed as described below:

- The paper weight that can be used with this machine is up to 350 g/m² (130 lb. Cover). Replace the maximum paper weight of 300 g/m² (110 lb. Cover) described in the manuals with the paper weight of 350 g/m² (130 lb. Cover).

★ Important

The maximum paper weight of the interposer of the perfect binder is 300 g/m² (110 lb. Cover).

- For the shapes of the toner containers, refer to the images below:



CXL001

© 2012
Printed in Japan
EN (US) M077-2197



M0772197