

For Pro C900

Refer to the following for additional information about your machine.

Turning Off the Main Power

This section explains how to turn off the main power.

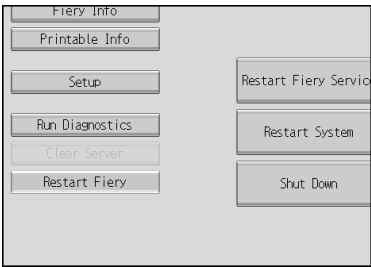
★ Important

- Do not turn off the main power switch when the operation switch indicator is lit or blinking. Doing so may result in damage to the hard disk or memory.
- Make sure to turn off the main power switch before pulling out the power plug. Not doing so may result in damage to the hard disk or memory.
- After turning off the main power switch, wait for two minutes or more before turning it on again.

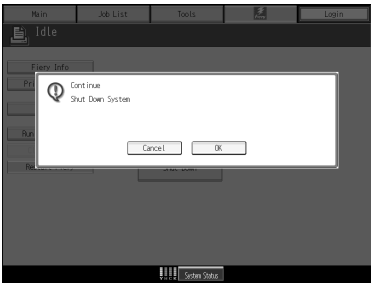
1. Press the [Fiery] tab.



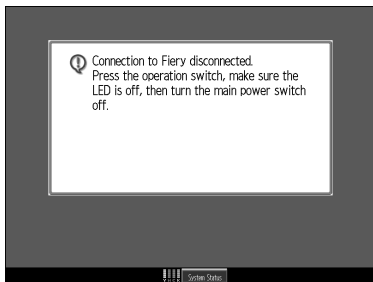
2. Press [Restart Fiery], and then press [Shut Down].



3. Press [OK].



4. The following message appears on the display panel. Press the operation switch.
The operation switch indicator goes off.

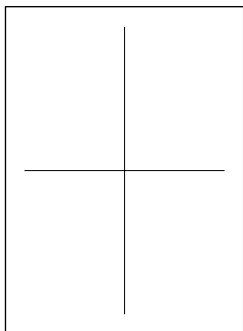


5. Open the front left cover.
6. Turn off the main power switch.
The main power indicator goes out.
7. Close the front left cover.

Adjusting the Image Position

This section explains how to adjust the image position if it is out of alignment.

1. Press the [User Tools] key.
2. Press [Adjustment Settings for Operators].
3. Press [APL Window].
4. Select the paper tray that you want to adjust.
5. Press [Off] to adjust the image on one side of the sheet. Press [Duplex] to adjust the images on both sides of the sheet.
6. Press [Print].
7. Fold the test sheet in four. Adjust the image using the image position settings in Adjustment Settings for Operators, until the folds match the centre lines of the test sheet.



BLA09003

Copyright © 2009
Printed in France
GB (GB) M064-7803



M0647803