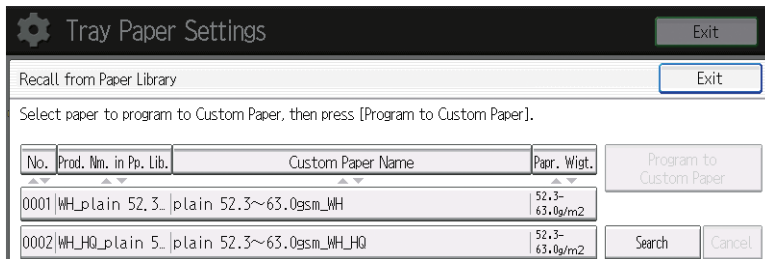


# Notes for Users

While selected from the Paper Library previously, [High Quality] can be selected currently from the driver dialog box, Color Controller's Command Workstation, or TotalFlow Print Server window.

## Previous Configuration Method

It was necessary to select a custom paper name ending with "HQ" from the custom paper names registered in the Paper Library.

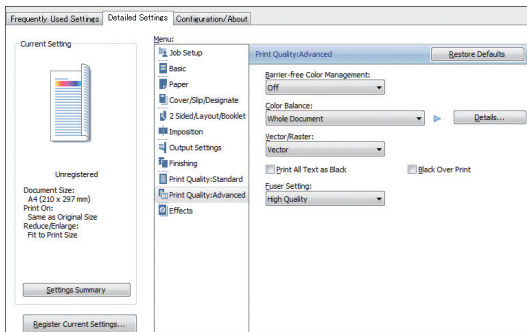


## New Configuration Method

### Printer Driver

[Fuser Setting:] in [Print Quality:Advanced] on the [Detailed Settings] tab of the printer driver preferences box is set to [High Quality].

The following figure shows the PCL6 printer driver dialog box. A similar menu is also available for the dialog boxes of other printer drivers.



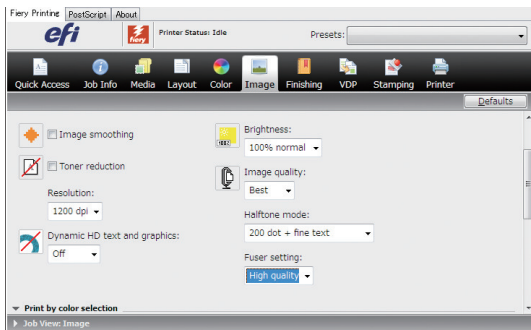
- Supported drivers:
  - Windows: PCL6/RPCS/PS3

---

## Color Controller

---

[Fuser setting:] on the [Image] tab of the Fiery or the printer driver dialog box is set to [High quality].



- Supported drivers and UIs:
  - Windows: PS (Windows 7 or later)
  - Mac: PS (10.7 to 10.11)
  - Command WorkStation

---

## TotalFlow Print Server

---

[Fuser setting] of the printer driver property dialog box or the TotalFlow Print Server window is set to [High quality].

- Supported drivers:
  - Windows: PS3
  - Mac : PS

There are three configuration methods when you use the TotalFlow Print Server window.

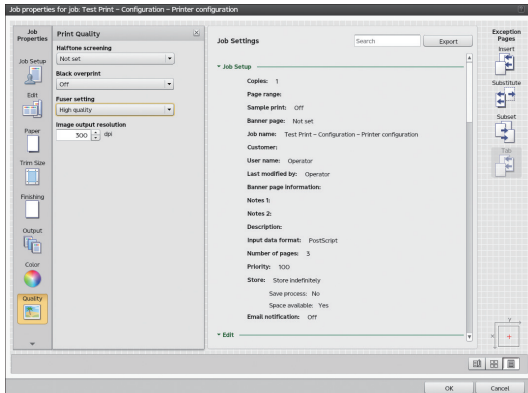
---

## Configured for each print job

---

1. **On the Operations or Jobs hub, find the pod that contains the print job you want to edit.**
2. **Select the print job you want to edit.**
3. **Click the edit icon.**  
The print job opens in the Job Properties Editor.
4. **Click [Quality] on the left side of the screen.**

**5. Go to [Fuser setting] and select [High quality].**

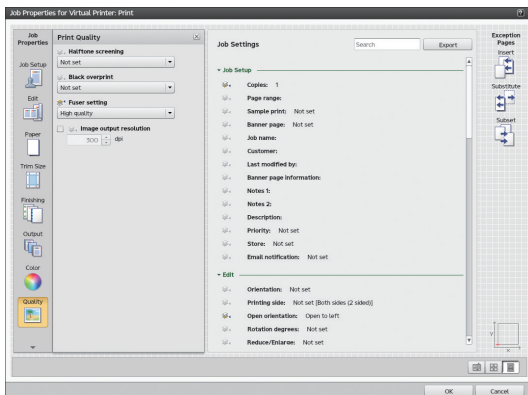


**6. Click [OK].**

## Changing the Virtual Printers setting

To change the Virtual Printers setting, log in from the [Administrator] or [Service] menu. After logging in, press the [Stop] button to switch to [Not Ready] on the TotalFlow Print Server.

- 1. On the Configuration hub, click the Network tab and find the Virtual Printers pod.**
- 2. Click the name of the virtual printer that you want to change and click the edit icon.**
- 3. Click [Job Properties] to open the Job Properties Editor.**
- 4. Click [Quality] on the left side of the screen.**
- 5. Go to [Fuser setting] and select [High quality].**



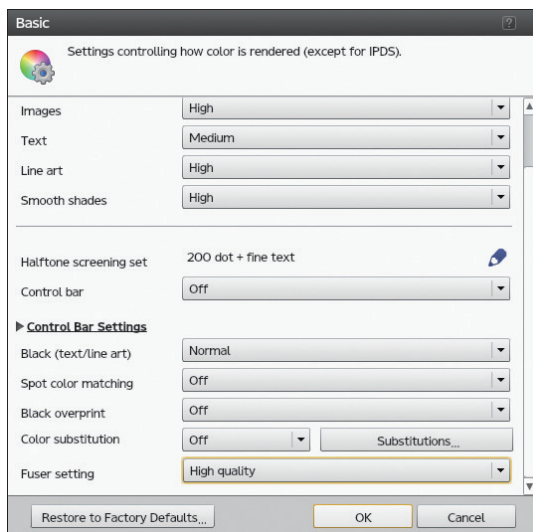
**6. Click [OK].**

## Set to [High quality] as the default

The default settings are applied when [Fuser setting] is set to [Not set] for each print job or when the Virtual Printers setting is configured.

To configure the default setting, log in from the [Administrator] or [Service] menu. After logging in, press the [Stop] button to switch to [Not Ready] on the TotalFlow Print Server.

1. On the Configuration hub, click the **Color Management** tab and find the **Basic** pod.
2. Click the **Basic** pod.
3. Go to [Fuser setting] and select [High quality].



4. Click [OK].