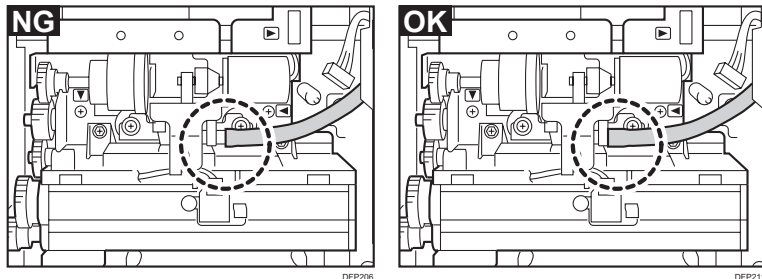


Cautions for Changing Special Toner Colors

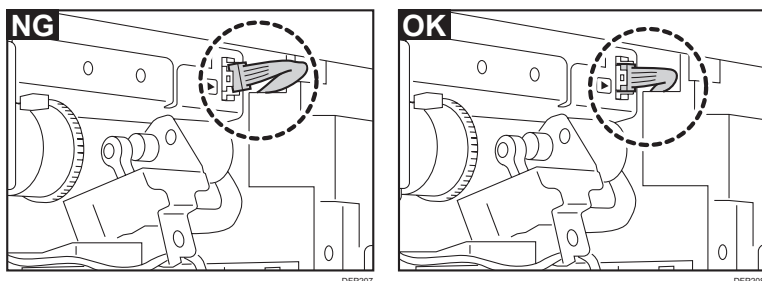
Change special toner colors according to the instructions in the Replacement Guide: TCRU/ORU. Pay attention to the following:

◆ Attaching the tube and the connector

When attaching the tube of the sub-hopper unit, push it in all the way in.



When attaching the connector of the sub-hopper unit, push it to make sure it is inserted fully and squarely.



Make sure that the connector and the tube are attached securely.

Otherwise, the following may occur:

- Image density may be reduced.
- It may take longer than usual to adjust the machine.
- Next time you change special toner color, a message "Independent-supplier toner cartridge is set." will appear.
- You cannot use the special color toner bottle.

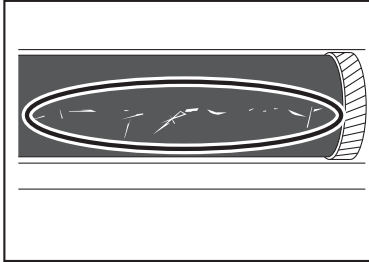
◆ Storing the photoconductor

After removing the photoconductor unit from the current development unit, attach it to the new development unit immediately.

If you cannot attach the photoconductor immediately, put it in the supplied black plastic bag.

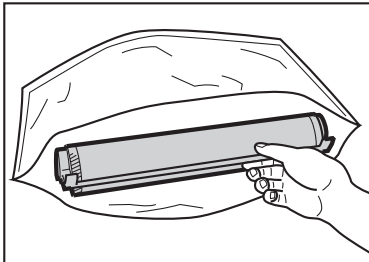
★ Important

- Do not wipe the part indicated or spread anything on it. Make sure the part does not come into contact with anything when putting the photoconductor unit in the black plastic bag or taking it out of the bag.



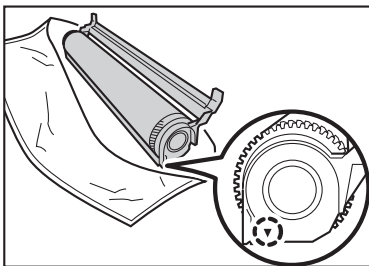
DFP204

1. Open the supplied black plastic bag on a flat surface so its opening is at the side, and then place the photoconductor unit in the bag carefully.



DFP209

Place it in the bag as shown in the illustration.



DFP210

2. Close the bag.