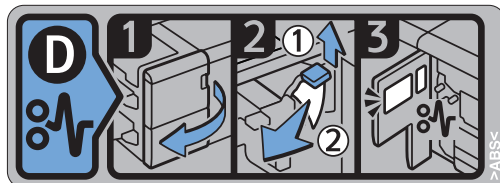


When LEDs are blinking, remove jammed paper according the instructions, before pulling the drawer unit.
When LED C1 and C2 are both blinking, it is safe to pull out the drawer unit without tearing papers.

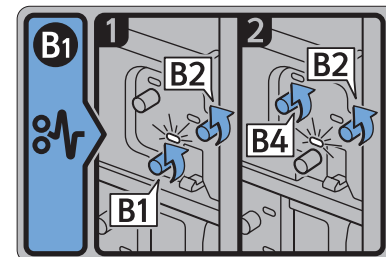
D1

- 1) First, Remove jammed paper from finishing unit.
- 2) If impossible, turn D1 in the counter clockwise and move jammed paper back to mainframe.



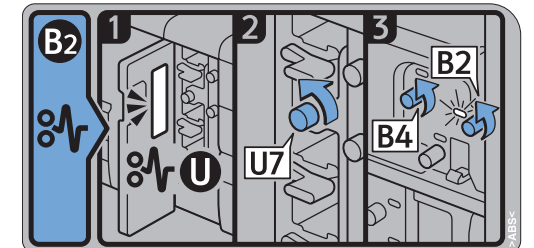
B1

- 1) Open A1 and remove jammed paper
- 2) Turn B1 & B2
- 3) Turn B2 & B4



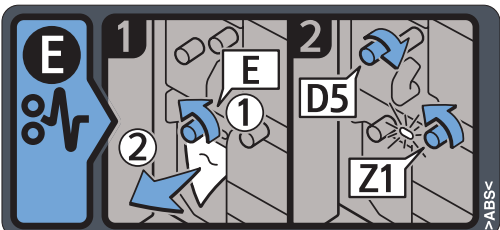
B2

- 1) First, Check LCT's instruction and remove jammed paper.
- 2) Turn U7(LCT) and move jammed paper to mainframe.
- 3) Turn B2&B4 together



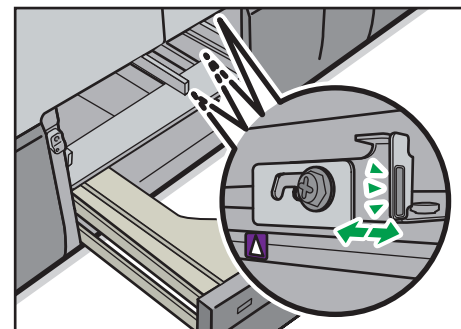
E

- 1) Turn E to move jammed paper down
- 2) If LED doesn't disappear, turn D5 or Z1 in the direction of arrows additionally.



*For TCRU/ORU Users

Increase the separation pressure level according to how often paper misfeeds occur (J003 to J005, J010 to J012).



- | | | |
|-----|--|--------------------|
| (A) | | A:Level1 (Default) |
| (B) | | B:Level2 |
| (C) | | C:Level3 |

A2

- 1) Open A1
- 2) Turn A2 and remove jammed paper

A3

- 1) Open A1
- 2) Turn A3 and remove jammed paper

