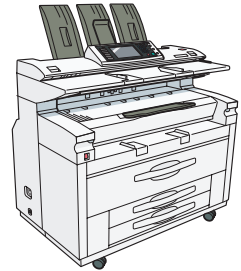




en5100WD / en7140WD
LW5100en / LW7140en
Aficio™ MP W5100en / W7140en

Operating Instructions Printer Reference



-
- 1** Preparing the Machine
 - 2** Setting Up the Printer Driver
 - 3** Other Print Operations
 - 4** Printing GL/2 and TIFF Files
 - 5** Saving and Printing Using the Document Server
 - 6** Appendix

Introduction

This manual contains detailed instructions and notes on the operation and use of this machine. For your safety and benefit, read this manual carefully before using the machine. Keep this manual in a handy place for quick reference. Do not copy or print any item for which reproduction is prohibited by law.

Copying or printing the following items is generally prohibited by local law:

bank notes, revenue stamps, bonds, stock certificates, bank drafts, checks, passports, driver's licenses.

The preceding list is meant as a guide only and is not inclusive. We assume no responsibility for its completeness or accuracy. If you have any questions concerning the legality of copying or printing certain items, consult with your legal advisor.

Important

Contents of this manual are subject to change without prior notice. In no event will the company be liable for direct, indirect, special, incidental, or consequential damages as a result of handling or operating the machine.

Two kinds of size notation are employed in this manual. With this machine refer to the inch version.

Notes

Some illustrations in this manual might be slightly different from the machine.

Certain options might not be available in some countries. For details, please contact your local dealer.

Depending on which country you are in, your machine may include certain options as standard. For details, please contact your local dealer.

Manuals for This Machine

Refer to the manuals that are relevant to what you want to do with the machine.

Important

- Media differ according to manual.
- The printed and electronic versions of a manual have the same contents.
- Adobe® Acrobat® Reader®/Adobe Reader must be installed in order to view the manuals as PDF files.
- A Web browser must be installed in order to view the html manuals.
- For details about the functions of RW-7140, refer to the manuals for this option.

About This Machine

Be sure to read the Safety Information in this manual before using the machine.

This manual provides an introduction to the functions of the machine. It also explains the control panel, preparation procedures for using the machine, how to enter text, and how to install the CD-ROMs provided.

Troubleshooting

Provides a guide to solving common problems, and explains how to replace paper, toner, and other consumables.

Copy/Document Server Reference

Explains Copier and Document Server functions and operations. Also refer to this manual for explanations on how to place originals.

Printer Reference

Explains Printer functions and operations.

Scanner Reference

Explains Scanner functions and operations.

Network Guide

Explains how to configure and operate the machine in a network environment, and use the software provided.

General Settings Guide

Explains User Tools settings, and Address Book procedures such as registering e-mail addresses, and user codes. Also refer to this manual for explanations on how to connect the machine.

Security Reference

This manual is for administrators of the machine. It explains security functions that you can use to prevent unauthorized use of the machine, data tampering, or information leakage. For enhanced security, we recommend that you first make the following settings:

- Install the Device Certificate.
- Enable SSL (Secure Sockets Layer) Encryption.
- Change the user name and password of the administrator using Web Image Monitor.

For details, see "Setting Up the Machine", Security Reference.

Be sure to read this manual when setting the enhanced security functions, or user and administrator authentication.

PostScript 3 Supplement

Explains how to set up and use PostScript® 3™.

UNIX Supplement

For "UNIX Supplement", please visit our Web site or consult an authorized dealer.

This manual includes descriptions of functions and settings that might not be available on this machine.

Information

Contains general notes on the machine, and information about the trademarks of product names used in the manuals.

Other manuals

- Manuals for DeskTopBinder Lite
 - DeskTopBinder Lite Setup Guide
 - DeskTopBinder Introduction Guide
 - Auto Document Link Guide

↓ Note

- Manuals provided are specific to machine types.
- The following software products are referred to using general names:

Product name	General name
DeskTopBinder Lite and DeskTopBinder Professional * 1	DeskTopBinder

* 1 Optional

TABLE OF CONTENTS

Manuals for This Machine.....	1
How to Read This Manual.....	6
Symbols.....	6
Model-Specific Information.....	7
Display Panel.....	8
Initial Display.....	8
Simplified Display.....	9
Job List.....	11
Job List Screen.....	11
Checking Jobs in the Job List.....	12
Changing the Order of Jobs.....	13
Holding Jobs.....	13
Deleting Jobs.....	14
Checking the Job History.....	14
Setting Paper on the Bypass Tray.....	16
Setting the Paper Size Using the Control Panel.....	17
Setting Custom Size Paper Using the Control Panel.....	19
Setting Translucent Paper or Film Using the Control Panel.....	20

1. Preparing the Machine

Confirming the Connection Method.....	23
Network Connection.....	23
Local Connection.....	25
Installing the Printer Driver.....	26
Quick Install.....	26
Installing the Printer Driver for the Selected Port.....	27
Using as a Windows Network Printer.....	37
Using as a NetWare Print Server / Remote Printer.....	39
Form Feed.....	40
Banner Page.....	40
Printing after Resetting the Printer.....	41
Installing the Printer Driver Using USB.....	42
Windows 2000 - USB.....	42
Windows XP, Windows Server 2003 / 2003 R2 - USB.....	43

Windows Vista - USB.....	44
Printing with Parallel Connection.....	46
Making Option Settings for the Printer.....	48
Conditions for Bidirectional Communication.....	48
If Bidirectional Communication Is Disabled.....	49
Using Adobe PageMaker Version 6.0, 6.5, or 7.0.....	50

2. Setting Up the Printer Driver

RPCS - Accessing the Printer Properties.....	51
Windows 2000 - Accessing the Printer Properties.....	51
Windows XP, Windows Server 2003 / 2003 R2 - Accessing the Printer Properties.....	53
Windows Vista - Accessing the Printer Properties.....	54

3. Other Print Operations

Printing a PDF File Directly.....	57
Printing Method.....	57
Using DeskTopBinder Lite.....	57
PDF Direct Print Properties.....	60
Using Commands.....	61
Using the Print Job Function.....	62
Selecting the Initial Print Job List.....	65
Printing from the Print Job Screen.....	67
Sample Print.....	67
Locked Print.....	70
Hold Print.....	73
Stored Print.....	76
Printing from the Jobs Per User ID Screen.....	81
Printing the Selected Print Job.....	81
Printing All Print Jobs.....	82
Canceling a Print Job.....	85
Canceling a Print Job Using the Control Panel.....	85
Windows - Canceling a Print Job from the computer.....	85
Checking the Error Log.....	87
Spool Printing.....	89
Printing with the Folding Finisher.....	90

Fold Types.....	91
Folding Finisher Cautions.....	91
Collate.....	93
4. Printing GL/2 and TIFF Files	
Printable Files.....	95
To Print.....	96
Using Web Printing Tool.....	96
Using From the Printing Commands.....	100
Print Settings for GL/2 & TIFF Filter.....	102
Adjusting the Print Settings for GL/2 & TIFF Filter.....	102
General Settings.....	103
GL/2 Print Settings.....	105
TIFF Print Settings.....	107
Using the HDI Driver for AutoCAD.....	108
Setup CD-ROM.....	108
Installing the HDI Driver.....	109
Displaying and Printing Help.....	110
Printable GL/2 Files.....	112
HP-GL Specifications.....	112
HP-GL/2 Specifications.....	117
HP-RTL Specifications.....	122
Printable TIFF Files.....	123
TIFF Data Specifications.....	123
Printable CALS Files.....	128
CALS Data Specifications.....	128
5. Saving and Printing Using the Document Server	
Accessing the Document Server.....	131
6. Appendix	
Specifications.....	133
Printer Features Menu.....	135
INDEX	139

How to Read This Manual

Symbols

This manual uses the following symbols:

Important

Indicates points to pay attention to when using the machine, and explanations of likely causes of paper misfeeds, damage to originals, or loss of data. Be sure to read these explanations.

Note

Indicates supplementary explanations of the machine's functions, and instructions on resolving user errors.

Reference

This symbol is located at the end of sections. It indicates where you can find further relevant information.

[]

Indicates the names of keys on the machine's display or control panels.

Model-Specific Information

In this manual, model-specific information is indicated by the following marks:

220-240V

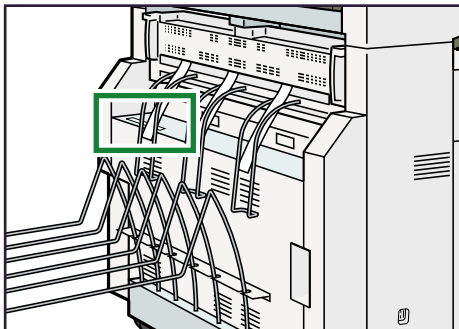
Indicates information that is specific to the 220 to 240 V model.

208-240V

Indicates information that is specific to the 208 to 240 V model.

↓ Note

- Check the label on the right side of the machine to identify the model.



BLX010S

- Dimensions in this manual are given in two units of measure: metric and inch. If your machine is the 220 to 240 V model, refer to the metric units. If your printer is the 208 to 240 V model, refer to the inch units.

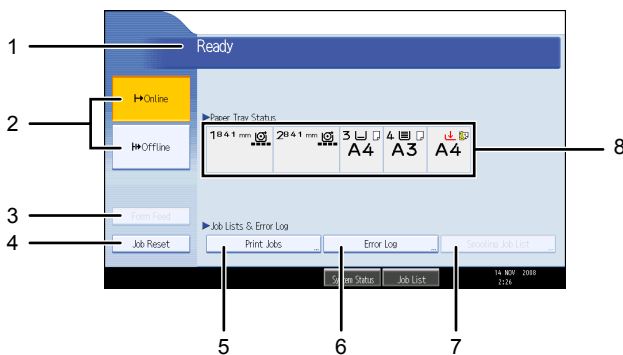
Display Panel

This section describes configuration using the display panel when the printer function is selected.

Initial Display

★ Important

- The machine switches to offline when you make settings in online mode. After you complete the setting, the machine switches to online automatically.
- If you make a setting when the machine is offline, it will stay offline afterwards.
- The function items displayed serve as selector keys. You can select or specify an item by pressing it lightly.
- When you select or specify an item on the control panel, it becomes highlighted.
- Keys dimmed (for example, **OK**) cannot be used.



BLX006S

1. Operational status or messages

Displays current machine status, such as "Ready", "Offline", and "Printing...". Information about the print job (user ID and document name) appears in this section.

2. [Online] / [Offline]

Press to switch the machine between online and offline.

When the machine is online, it can receive data from the computer.

When the machine is offline, it cannot receive data from the computer.

3. [Form Feed]

Press to print all the data left in the machine's input buffer.

- When the machine is online, the status appears dimly.
- This function is not available with the RPCS printer language.

4. [Job Reset]

Press to cancel the current print job.

If you press it when the machine is offline and Hex Dump is selected, Hex Dump is canceled.

5. [Print Jobs]

Press to display print jobs sent from a computer.

6. [Error Log]

Press to display the error logs of print jobs sent from a computer.

7. [Spooling Job List]

Press to display spooled jobs.

8. Paper Tray Status indicators

The paper tray settings appear.

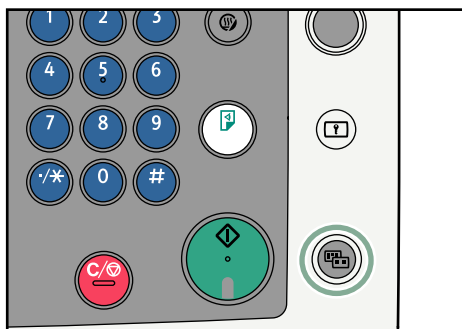
↓ Note

- When the power is turned on, the copier display is shown. This is a factory default. This initial setting can be changed. For details, see "System Settings", General Settings Guide.

Simplified Display

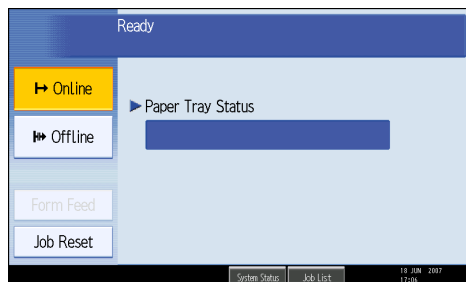
This section explains how to switch to the simplified display.

When you press the [Simplified Display] key, the screen changes from the initial display to the simplified display. Letters and keys are displayed at a larger size, making operations easier.



BLX001S

Example of a simplified display



↓ Note

- To return to the initial display, press the [Simplified Display] key again.
- Certain keys do not appear on the simplified display.

Job List

Jobs printed using Copy, Document Server, or Printer mode are temporarily stored in the machine, and then executed in order. The Job List function allows you to manage these jobs.

For example, you can cancel incorrect job settings or print an urgent document.

Note

- You cannot use the Job List function when Interrupt Copy is active.
- Documents printed using the facsimile function and scanner function are not displayed in the Job List.

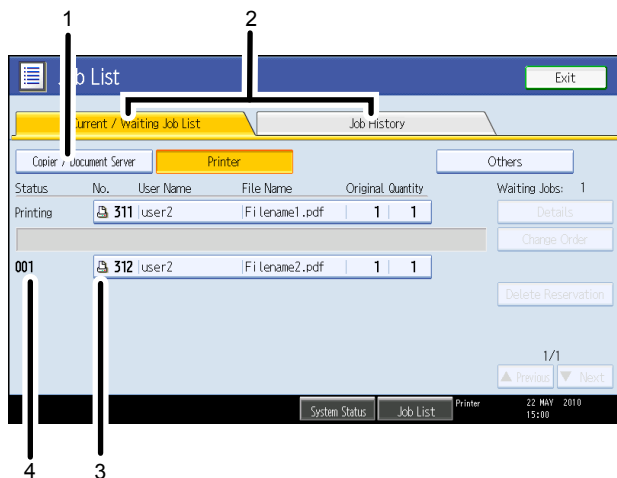
Job List Screen

This section explains displays and icons that appear in the Job List screen.

The Job List screen varies depending on whether Job Order is selected with Print Priority for the System Settings. For details about setting procedure, see "System Settings", General Settings Guide.

When [Job Order] is not selected:

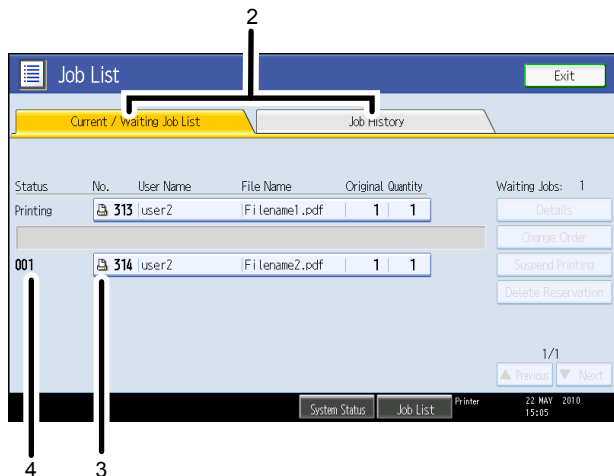
The job list is displayed for each of the functions.



CAU004S

When [Job Order] is selected:

The job list is displayed for all functions in the order of print jobs.



CAU005S

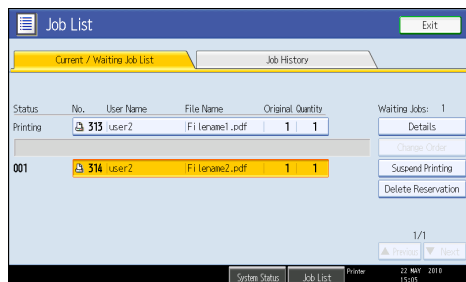
1. Switches between job lists for each function.
2. Switches between [Current / Waiting Job List] and [Job History].
3. Displays reserved job numbers.
4. Displays the function used to print jobs.

- : Job printed using copy function
- : Job printed using printer function
- : Job printed using Document Server function
- : Job printed using DeskTopBinder
- : Job printed using Web Image Monitor

Checking Jobs in the Job List

You can check the contents of jobs in the job list.

1. Press [Job List].
2. Select a job whose contents you want to check.

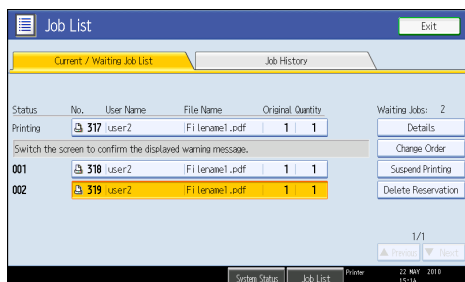


3. Press [Details], and then check the contents.
4. Press [Exit].

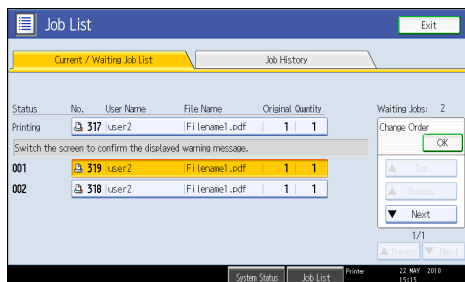
Changing the Order of Jobs

You can change the order of jobs in the job list.

1. Press [Job List].
2. Select a job whose order you want to change.



3. Press [Change Order].
4. Change the order using [Top], [Previous], or [Next].



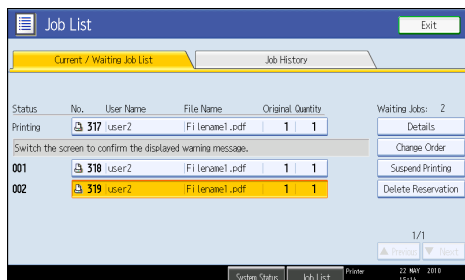
5. Press [OK].

Holding Jobs

You can hold jobs that are queued or currently printing.

1. Press [Job List].

2. Select a job you want to hold.



3. Press [Suspend Printing].

The selected job and the jobs that follow it are suspended. "Suspended" is displayed at the left of the jobs in the job list that are suspended.

Note

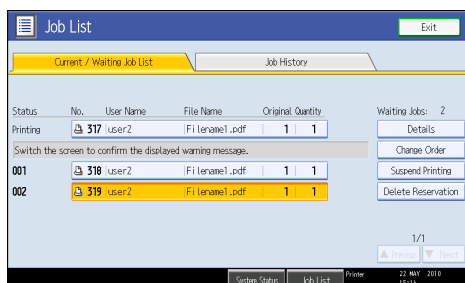
- To resume the suspended jobs, press [Resume Printing].
- This function is available only if [Job Order] is specified.

Deleting Jobs

You can delete a job that is queued or currently printing.

1. Press [Job List].

2. Select a job you want to delete.



To delete multiple print jobs, select all print jobs you want to delete.

3. Press [Delete Reservation].

4. Press [OK].

Checking the Job History

You can view the history and contents of completed print jobs.

1. Press [Job List].

2. Press [Job History].

A list of completed print jobs appears.

3. Select a job whose contents you want to check.

4. Press [Details], and then check the contents.

5. Press [Exit].

Setting Paper on the Bypass Tray

This section gives instructions for setting paper on the bypass tray.

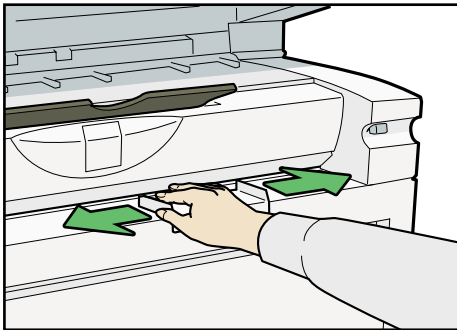
For details about paper size and paper type, see "Paper Size and Paper Type", About This Machine.

★ Important

- Paper sizes that can be loaded onto the bypass tray are 182 - 2000 mm (7.17 - 78.74 in.) vertical, and 210 - 914.4 mm (8.27 - 36 in.) horizontal.
- Insert the paper in the bypass tray lengthwise or sideways to fit it onto the feeding orientation.
- The following functions are disabled when printing from the bypass tray:
 - Auto Tray Select
 - Auto Tray Switching
 - Folding (when the optional folding finisher installed)

1. Set the paper size using the printer driver or control panel.
2. Adjust the bypass tray's paper guides to the size of the paper.

If the paper size of the paper guide and the paper do not match, skewing and misfeeds might occur.



3. Send the print job to the machine.
4. Gently push the paper face up into the bypass tray until the beeper sounds.

Place the paper centrally, so that the space on either side of its edges is even.

Then push it carefully in, so that it makes light contact with the feed rollers.

Support the paper with your hands until it feeds in.

The paper feeds into the machine automatically and printing starts.



5. Check that the paper is properly fed.

↓ Note

- When the Panel Key Sound is turned off, it will not sound if you insert paper into the bypass tray. For details about Panel Key Sound, see "System Settings", General Settings Guide.
- When loading translucent paper or film, set paper size and paper type.
- If you are printing multiple pages, feed the next sheet.
- Do not print on both sides of the paper.
- Do not use paper already copied or printed on.
- For details about paper type and orientation that can be loaded in the bypass tray, see "Copy Paper", About This Machine.
- To set a rolled paper, pull out the lower output auxiliary guide to the front, and then place the rolled paper on it.
- For details about setting printer drivers, see the printer driver Help.

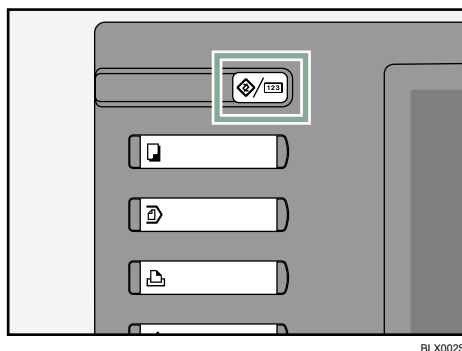
Setting the Paper Size Using the Control Panel

Follow the procedure below to set the machine using the control panel when loading standard size paper onto the bypass tray.

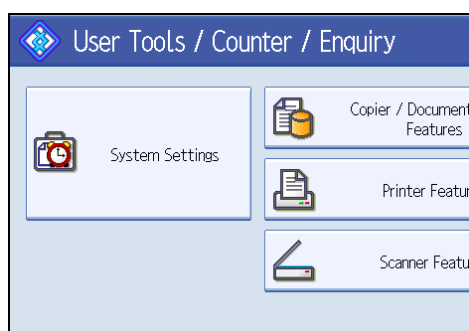
★ Important

- The following procedures are not required if you select [Driver / Command] from [Bypass Tray Setting Priority] in [System] of [Printer Features] (see "Printer Features", General Settings Guide). In that case, set the paper size using the printer driver.
- Under [Printer Features], [System], if you set [Bypass Tray Setting Priority] to [Driver / Command], paper size settings made on the printer driver must match those made on the control panel. If they do not match, an error message appears and printing stops if [Printer Features], [System], [Auto Continue] is not set. For details about [Printer Features] settings, see General Settings Guide.

1. Press the [User Tools/Counter] key on the control panel.

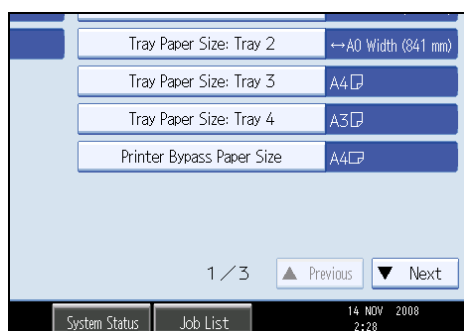


2. Press [System Settings].



3. Press the [Tray Paper Settings] tab.

4. Press [Printer Bypass Paper Size].



5. Select the paper size.
6. Press [OK].
7. Press the [User Tools/Counter] key.

The initial screen appears.

Note

- When loading thick paper, thin paper, or OHP transparencies, set paper size and paper type.

- For details about setting printer drivers, see the printer driver Help.

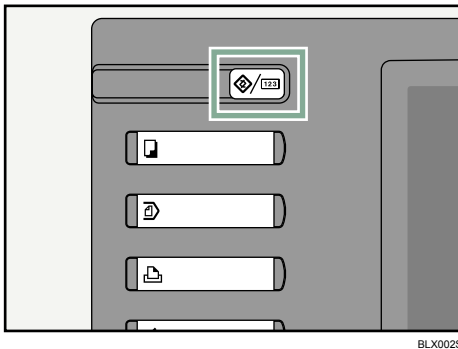
Setting Custom Size Paper Using the Control Panel

Follow the procedure below to set the machine using the control panel when loading custom size paper onto the bypass tray.

★ Important

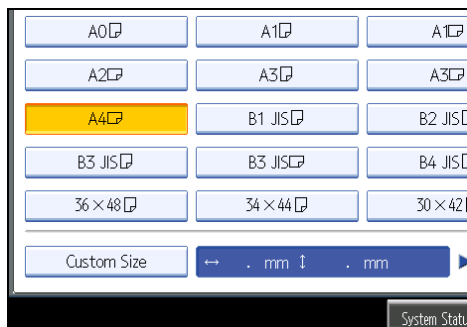
- Paper sizes that can be loaded onto the bypass tray are 182 - 2000 mm (7.17 - 78.74 in.) vertical, and 210 - 914.4 mm (8.27 - 36 in.) horizontal.
- The following procedures are not required if you select [Driver / Command] from [Bypass Tray Setting Priority] in [System] of [Printer Features] (see "Printer Features", General Settings Guide). In that case, set the paper size using the printer driver.
- If you select [Machine Settings] from [Bypass Tray Setting Priority] in [System] of [Printer Features] (see "Printer Features", General Settings Guide), the settings made using the control panel have priority over the printer driver settings.
- If the printer driver is not used, select [Machine Settings] from [Bypass Tray Setting Priority] in [System] of [Printer Features] (see "Printer Features", General Settings Guide). Set paper size using the control panel.

1. Press the [User Tools/Counter] key on the control panel.



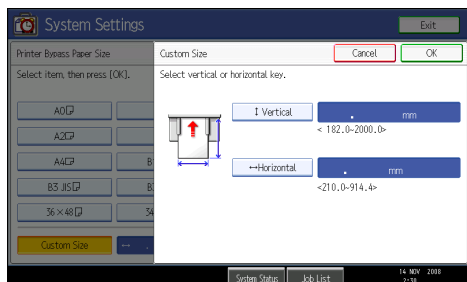
2. Press [System Settings].
3. Press the [Tray Paper Settings] tab.
4. Press [Printer Bypass Paper Size].

5. Press [Custom Size].



If a custom size is already set, press [Change Size].

6. Press [Vertical], enter the vertical size of the paper using the number keys, and then press the [#] key.



7. Press [Horizontal], enter the horizontal size of the paper using the number keys, and then press the [#] key.

8. Press [OK].

The paper sizes entered are displayed.

9. Press [OK].

10. Press the [User Tools/Counter] key.

The initial screen appears.

Note

- When loading thick paper, thin paper, or OHP transparencies, set paper size and paper type.
- For details about setting printer drivers, see the printer driver Help.

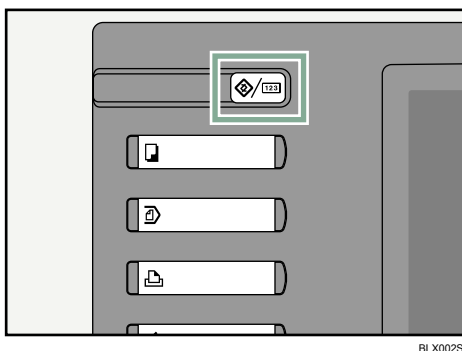
Setting Translucent Paper or Film Using the Control Panel

Follow the procedure below to set the machine using the control panel when loading thick paper, thin paper, or OHP transparencies onto the bypass tray.

★ Important

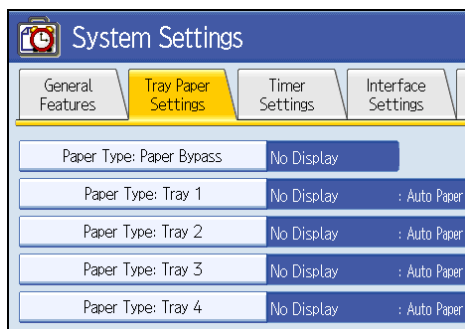
- The following procedures are not required if you select [Driver / Command] from [Bypass Tray Setting Priority] in [System] of [Printer Features] (see "Printer Features", General Settings Guide). In that case, set the paper size using the printer driver.
- If you select [Machine Settings] from [Bypass Tray Setting Priority] in [System] of [Printer Features] (see "Printer Features", General Settings Guide), the settings made using the control panel have priority over the printer driver settings.
- If the printer driver is not used, select [Machine Settings] from [Bypass Tray Setting Priority] in [System] of [Printer Features] (see "Printer Features", General Settings Guide). Set the paper size using the control panel.

1. Press the [User Tools/Counter] key on the control panel.

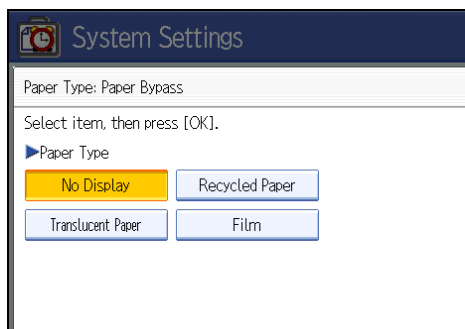


BLX002S

2. Press [System Settings].
3. Press the [Tray Paper Settings] tab.
4. Press [▼Next] to scroll through the list.
5. Press [Paper Type: Paper Bypass].



-
6. Press [Translucent Paper] or [Film] on the [Paper Type] area when loading translucent paper or film.



7. Press [OK].

The paper type selected is displayed.

8. Press the [User Tools/Counter] key.

The initial screen appears.

Note

- The settings made will remain valid until they are reset again. After printing on translucent paper or film, make sure to clear settings for the next user.
- For details about setting printer drivers, see the printer driver Help.

1. Preparing the Machine

This chapter describes how to connect this machine to your computer, and install the printer driver.

Confirming the Connection Method

This machine supports network and local connection.

Before installing the printer driver, check how the machine is connected. Follow the driver installation procedure that is appropriate to the connection method.

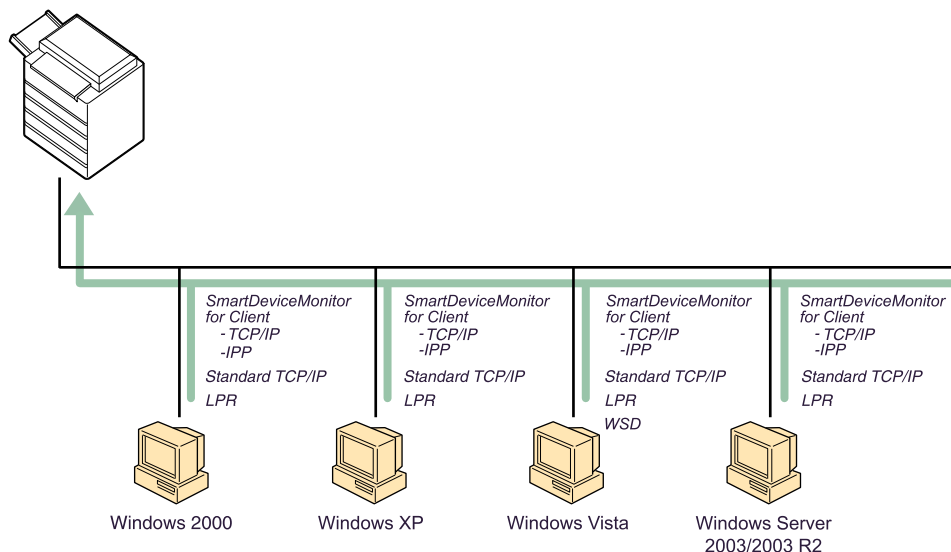
Network Connection

This machine can be used as a Windows printing port or network printer.

Using this machine as the Windows printing port

Network connections can be established through Ethernet, and Wireless LAN.

Available ports are determined based on the combination of Windows operating system version and connection method used.



BLX004S

Windows 2000 / XP, Windows Server 2003 / 2003 R2

Connection Method	Available Ports
<ul style="list-style-type: none">EthernetWireless LAN	<ul style="list-style-type: none">SmartDeviceMonitor for Client portStandard TCP/IP portLPR port

Windows Vista

Connection Method	Available Ports
<ul style="list-style-type: none">EthernetWireless LAN	<ul style="list-style-type: none">SmartDeviceMonitor for Client portStandard TCP/IP portLPR portWSD port

Note

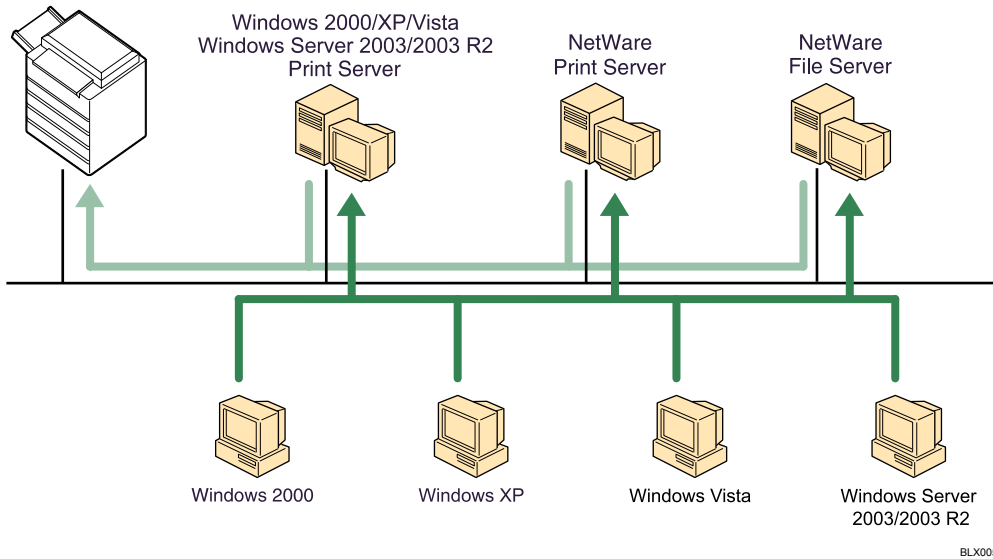
- See the explanation about how to install the printer driver for each type of port.
- For details about SmartDeviceMonitor for Client port, see "Installing the Printer Driver".
- For details about Standard TCP/IP port, see "Installing the Printer Driver".
- For details about LPR port, see "Installing the Printer Driver".
- For details about WSD port, see "Installing the Printer Driver".

Reference

- p.26 "Installing the Printer Driver"

Using as a network printer

This machine can be used as the Windows network printer, the NetWare print server, or the NetWare remote printer.



Note

- In an IPv6 environment, NetWare servers cannot be used.
- See the explanation about how to install the printer driver for each type of network printer.
- For details about Windows network printer, see "Using as a Windows Network Printer".
- For details about NetWare print server and remote printer, see "Using as a NetWare Print Server / Remote Printer".

Reference

- p.37 "Using as a Windows Network Printer"
- p.39 "Using as a NetWare Print Server / Remote Printer"

Local Connection

Local connections can be established via parallel and USB connections.

Note

- See the explanation about how to install the printer driver for each method of connections.
- For details about USB connections, see "Installing the Printer Driver Using USB".
- For details about parallel connections, see "Printing with Parallel Connection".

Reference

- p.42 "Installing the Printer Driver Using USB"
- p.46 "Printing with Parallel Connection"

Installing the Printer Driver

This section explains how to install the printer driver. There are two ways to install the printer driver: using Quick Install, which installs the settings at once, or installing the appropriate driver according to the port you want to use.

Downloading the Printer Driver

You can install the printer driver from the CD-ROM provided with this machine or download it from the manufacturer's Web site.

If your operating system is Windows XP Pro x64 or Windows Server 2003 / 2003 R2 x64, you must download the printer driver from the manufacturer's Web site. Select this machine and the operating system you are using, and then download it.

Quick Install

Users of Windows 2000 / XP / Vista, and Windows Server 2003 / 2003 R2 can install this software easily using the supplied CD-ROM.

Using Quick Install, the RPCS printer driver, DeskTopBinder - SmartDeviceMonitor for Client are installed under network environment, and the TCP/IP port will be set.

★ Important

- To install the printer driver under Windows 2000 / XP / Vista, and Windows Server 2003 / 2003 R2, you must have an account that has Manage Printers permission. Log on as an Administrator.
- If you connect using USB, see "Installing the Printer Driver Using USB" and install the printer driver.

1. Quit all applications currently running.
2. Insert the CD-ROM into the CD-ROM drive.

The installer starts.

3. Select an interface language, and then click [OK].

The default interface language is English.

4. Click [Quick Install].

The software license agreement appears in the [License Agreement] dialog box.

5. After reading the agreement, click [I accept the agreement.], and then click [Next >].

6. Select the machine model you want to use in the [Select Printer] dialog box.

For network connection via TCP/IP, select the machine whose IP address is displayed in [Connect To].

For parallel connection, select the machine whose printer port is displayed in [Connect To].

7. Click [Install].

The printer driver installation starts.

8. Click [Finish].

A message about restarting the computer appears. Restart the computer to complete installation.

9. Click [Exit] in the first dialog box of the installer, and then take out the CD-ROM.**Note**

- To stop installation of the selected software, click [Cancel] before installation is complete.
- Auto Run may not work with certain operating system settings. If this happens, launch "Setup.exe" on the CD-ROM root directory.
- Select a machine to whose IP address is displayed in [Connect To] to install SmartDeviceMonitor for Client when using TCP/IP.
- Quick Install is not available unless bidirectional communication between the machine and computer is enabled via parallel connection. For details about bidirectional communication between the machine and computer, see "Making Option Settings for the Printer".

Reference

- p.42 "Installing the Printer Driver Using USB"
- p.48 "Making Option Settings for the Printer"

Installing the Printer Driver for the Selected Port

Using the SmartDeviceMonitor for Client port

Important

- To install SmartDeviceMonitor for Client under Windows 2000 / XP / Vista, and Windows Server 2003 / 2003 R2, you must have an account that has Manage Printers permission. Log on as an Administrator.
- Install SmartDeviceMonitor for Client before installing the printer driver when using the SmartDeviceMonitor for Client port.

Installing SmartDeviceMonitor for Client

- 1. Quit all applications currently running.**
- 2. Insert the CD-ROM into the CD-ROM drive.**
The installer starts.
- 3. Select an interface language, and then click [OK].**

The default interface language is English.

4. Click **[DeskTopBinder - SmartDeviceMonitor for Client]**.
5. The message to quit all other applications appears. Quit all applications, and then click **[Next >]**.

6. The software license agreement appears in the **[License Agreement]** dialog box. After reading through its contents, click **[Yes]**.

7. Click **[Full install]** or **[Custom install]**.

[Full install] installs all required applications: DeskTopBinder Lite and SmartDeviceMonitor for Client.

[Custom install] installs selected applications.

8. Follow the instructions on the display and then click **[Next >]** to proceed to the next step.
9. After the installation is completed, select one of the options to restart the computer either now or later, and click **[Complete]**.

Restart the computer to complete installation.

Note

- To stop installation of the selected software, click **[Cancel]** before installation is complete.
- Auto Run may not work with certain operating system settings. If this happens, launch "Setup.exe" on the CD-ROM root directory.

Changing the port settings for SmartDeviceMonitor for Client

Follow the procedure below to change the SmartDeviceMonitor for Client settings, such as TCP/IP timeout, recovery/parallel printing, and printer groups.

Windows 2000:

1. On the **[Start]** menu, point to **[Settings]**, and then click **[Printers]**.
The **[Printers]** window appears.
2. Click the icon of the machine you want to use. On the **[File]** menu, click **[Properties]**.
3. On the **[Ports]** tab, click **[Configure Port]**.
The **[Configuration]** dialog box appears.

Windows XP, Windows Server 2003 / 2003 R2:

1. On the **[Start]** menu, click **[Printers and Faxes]**.
The **[Printers and Faxes]** window appears.
2. Click the icon of the machine you want to use. On the **[File]** menu, click **[Properties]**.
3. Click the **[Ports]** tab, and then click **[Configure Port]**.
The **[Port Configuration]** dialog box appears.

Windows Vista:**1. On the [Start] menu, click [Control Panel].**

The [Control Panel] window appears.

2. Click [Printer].

The [Printers] window appears.

3. Right-click the icon of the printer you want to use, and then click [Properties].**4. Click the [Ports] tab, and then click [Configure Port].**

The [Port Configuration:] dialog box appears.

↓ Note

- For TCP/IP, timeout setting can be configured.
- User, proxy, and timeout settings can be configured for IPP.
- If no settings on the [Recovery/Parallel Printing] tab are available, follow the procedure below.
 1. Click [Cancel] to close the [Port Configuration:] dialog box.
 2. Start SmartDeviceMonitor for Client, and then right-click the SmartDeviceMonitor for Client icon on the task tray.
 3. Point to [Properties], and then click [Extended Features Settings].
 4. Select the [Set Recovery/Parallel Printing for each port] check box.
 5. Click [OK] to close the [Extended Features Settings] dialog box.
- For details about these settings, see "Using SmartDeviceMonitor for Client", Network Guide, or SmartDeviceMonitor for Client Help.

Installing the RPCS printer driver (TCP/IP)**★ Important**

- To install this printer driver under Windows 2000 / XP / Vista, and Windows Server 2003 / 2003 R2, you must have an account that has Manage Printers permission. Log on as an Administrators or Power Users group member.

1. Quit all applications currently running.**2. Insert the CD-ROM into the CD-ROM drive.**

The installer starts.

3. Select an interface language, and then click [OK].

The default interface language is English.

4. Click [RPCS Printer Drivers].

5. The software license agreement appears in the [License Agreement] dialog box.

After reading the agreement, click [I accept the agreement.], and then click [Next >].

6. Select the printer driver you want to use in the [Select Program] dialog box.

You can select several printer drivers.

7. Click [Next >].**8. Select the machine model you want to use.**

The printer name can be changed in the [Change settings for 'Printer Name'] box.

9. Double-click the printer name to display the printer settings.

The details shown in [Comment], [Driver], and [Port] vary depending on the operating system, printer model, and port.

10. Click [Port], and then click [Add].**11. Click [SmartDeviceMonitor], and then click [OK].****12. Click [TCP/IP], and then click [Search].**

A list of printers using TCP/IP appears.

13. Select the printer you want to use, and then click [OK].

Only printers that respond to a broadcast from the computer appear. To use a machine not listed here, click [Specify Address], and then enter the IP address or host name of the machine.

14. Check that the port of the selected printer is displayed in [Port].**15. Set a user code, if necessary.**

Up to 8 numeric characters can be entered. No alphabetic characters or symbols can be entered.

16. Select the [Default Printer] check box to configure the printer as default.**17. Click [Continue].**

Installation starts.

18. After the installation is completed, select one of the options to restart the computer either now or later, and then click [Finish].**Note**

- Setting a user code allows a SmartDeviceMonitor for Admin user to display and check statistics about the number of sheets which each user prints. For details, see SmartDeviceMonitor for Admin Help.
- Auto Run may not work with certain operating system settings. If this happens, launch "Setup.exe" on the CD-ROM root directory.
- A message appears if there is a newer version of the printer driver already installed. If there is, you cannot install the printer driver using Auto Run. If you still want to install the printer driver, use [Add Printer]. See "When a Message Appears during Installation of the Printer Driver", Trouble Shooting.

Installing the RPCS printer driver (IPP)

★ Important

- To install printer driver under Windows 2000 / XP / Vista, and Windows Server 2003 / 2003 R2, you must have an account that has Manage Printers permission. Log on as an Administrators or Power Users group member.

1. Quit all applications currently running.

2. Insert the CD-ROM into the CD-ROM drive.

The installer starts.

3. Select an interface language, and then click [OK].

The default interface language is English.

4. Click [RPCS Printer Drivers].

5. The software license agreement appears in the [License Agreement] dialog box.

After reading the agreement, click [I accept the agreement.], and then click [Next >].

6. Select a printer driver you want to use in the [Select Program] dialog box.

You can select several printer drivers.

7. Select the machine model you want to use.

The printer name can be changed in the [Change settings for 'Printer Name'] box.

8. Double-click the printer name to display the printer settings.

The details shown in [Comment], [Driver], and [Port] vary depending on the operating system, printer model, and port.

9. Click [Port], and then click [Add].

10. Click [SmartDeviceMonitor], and then click [OK].

11. Click [IPP].

12. In the [Printer URL] box, enter "http://printer's IP address/printer" as the printer's address.

If the server authentication is issued, to enable SSL (a protocol for encrypted communication), enter "https://printer's IP address/printer" (Internet Explorer 5.01, or a higher version must be installed).
(example IP address: 192.168.15.16)

http://192.168.15.16/printer

https://192.168.15.16/printer

You can enter "http://printer's IP address/ipp" as the printer's address.

- 13. Enter a name for identifying the printer in [IPP Port Name]. Use a name different from the one of any existing ports.**

If a name is not specified here, the address entered in the [Printer URL] box becomes the IPP port name.

- 14. Click [Detailed Settings] to make necessary settings.**

For details about the settings, see SmartDeviceMonitor for Client Help.

- 15. Click [OK].**

- 16. Check that the port of the selected printer is displayed in [Port].**

- 17. Set a user code, if necessary.**

Up to 8 numeric characters can be entered. No alphabetic characters or symbols can be entered.

- 18. Select the [Default Printer] check box to configure the printer as default.**

- 19. Click [Continue].**

Installation starts.

- 20. After the installation is completed, select one of the options to restart the computer either now or later, and then click [Finish].**

Restart the computer to complete installation.

 **Note**

- To stop installation of the selected software, click [Cancel] before installation is complete.
- Auto Run may not work with certain operating system settings. In that case, launch "Setup.exe" on the CD-ROM root directory.
- Setting a user code allows a SmartDeviceMonitor for Admin user to display and check the number of sheets each user prints. For details, see SmartDeviceMonitor for Admin Help.
- A message appears if there is a newer version of the printer driver already installed. If there is, you cannot install the printer driver using Auto Run. If you still want to install the printer driver, use [Add Printer]. See "When a Message Appears during Installation of the Printer Driver", TroubleShooting.

Using the Standard TCP/IP port

This describes how to install the RPCS printer driver using the TCP/IP port.

 **Important**

- To install this printer driver under Windows 2000 / XP / Vista, and Windows Server 2003 / 2003 R2, you must have an account that has Manage Printers permission. Log on as an Administrators or Power Users group member.
- In an IPv6 environment, you cannot use the Standard TCP/IP Port. Use the SmartDeviceMonitor for Client port.

Installing the RPCS Printer Driver

1. **Quit all applications currently running.**

2. **Insert the CD-ROM into the CD-ROM drive.**

The installer starts.

3. **Select an interface language, and then click [OK].**

The default interface language is English.

4. **Click [RPCS Printer Driver].**

5. **The software license agreement appears in the [License Agreement] dialog box.**

After reading the agreement, click [I accept the agreement.], and then click [Next >].

6. **Select a printer driver you want to use in the [Select Program] dialog box.**

You can select several printer drivers.

7. **Click [Next >].**

8. **Select the machine model you want to use.**

The printer name can be changed in the [Change settings for 'Printer Name'] box.

9. **Double-click the printer name to display the printer settings.**

The details shown in [Comment], [Driver], and [Port] vary depending on the operating system, printer model, and port.

10. **Click [Port], and then click [Add].**

11. **Click [Standard TCP/IP Port], and then click [OK].**

Configure the Standard TCP/IP port settings, and then see Windows Help if [Standard TCP/IP Port] does not appear.

12. **Click [Next >] in the [Add Standard TCP/IP Printer Port Wizard] dialog box.**

13. **Enter the printer name or IP address in the [Printer Name or IP Address] box.**

The [Port Name] text box automatically obtains a port name. Change this name if necessary.

When the device selection appears, select "RICOH NetworkPrinter Driver C Model".

14. **Click [Next >].**

15. **Click [Finish] in the [Add Standard TCP/IP Printer Port Wizard] dialog box.**

The installation start dialog box reappears.

16. **Check that the port of the selected printer is displayed in [Port].**

17. **Configure the default printer as necessary.**

18. **Click [Continue].**

The printer driver installation starts.

- 19. After the installation is completed, select one of the options to restart the computer either now or later, and then click [Finish].**

Restart the computer to complete installation.

Note

- To stop installation of the selected software, click [Cancel] before installation is complete.
- Auto Run may not work with certain operating system settings. In that case, launch "Setup.exe" on the CD-ROM root directory.
- A message appears if there is a newer version of the printer driver already installed. If there is, you cannot install the printer driver using Auto Run. If you still want to install the printer driver, use [Add Printer]. See "When a Message Appears during Installation of the Printer Driver", Troubleshooting.

Using the LPR port

This describes how to install the RPCS printer driver using the LPR port.

Important

- To install this printer driver under Windows 2000 / XP / Vista, and Windows Server 2003 / 2003 R2, you must have an account that has Manage Printers permission. Log on as an Administrators or Power Users group member.

Installing the RPCS Printer Driver

1. **Quit all applications currently running.**
2. **Insert the CD-ROM into the CD-ROM drive.**

The installer starts.
3. **Select an interface language, and then click [OK].**

The default interface language is English.
4. **Click [RPCS Printer Drivers].**
5. **The software license agreement appears in the [License Agreement] dialog box.**

After reading the agreement, click [I accept the agreement.], and then click [Next >].
6. **Select a printer driver you want to use in the [Select Program] dialog box.**

You can select several printer drivers.
7. **Select the machine model you want to use.**

The printer name can be changed in the [Change settings for 'Printer Name'] box.
8. **Click [Next >].**
9. **Double-click the printer name to display the printer settings.**

The details shown in [Comment], [Driver], and [Port] vary depending on the operating system, printer model, and port.

10. Click [Port], and then click [Add].

11. Click [LPR Port], and then click [OK].

If [LPR Port] does not appear, see Windows Help and install it.

12. Enter the printer's IP address in the [Name or address of server providing lpd] box.

13. Enter "lp" in the [Name of printer or print queue on that server] box, and then click [OK].

The port is added.

14. Check that the port of the selected printer is displayed in [Port].

15. Configure the default printer as necessary.

16. Click [Continue].

The printer driver installation starts.

17. After the installation is completed, select one of the options to restart the computer either now or later, and then click [Finish].

Restart the computer to complete installation.

Note

- To stop installation of the selected software, click [Cancel] before installation is complete.
- Auto Run may not work with certain operating system settings. In that case, launch "Setup.exe" on the CD-ROM root directory.
- A message appears if there is a newer version of the printer driver already installed. If there is, you cannot install the printer driver using Auto Run. If you still want to install the printer driver, use [Add Printer]. See "When a Message Appears during Installation of the Printer Driver", Troubleshooting.

Using the WSD port

This section explains installation when using the WSD port.

Important

- The WSD port can be used only under Windows Vista.
- To install under Windows Vista, you must have an account that has Manage Printers permission. Log on as an Administrator.
- If the machine is connected using the WSD port, bi-directional communication is not possible. For details about bi-directional communication, see "Making Option Settings for the Printer".
- You can connect to the machine only if both the machine and computer are on the same network segment, or Windows Vista "Network discovery" is enabled. For details, see Windows Help.

1. Quit all applications currently running.

2. On the [Start] menu, click [Network].

The [Network] window appears, and the device search begins automatically.

3. Right-click the machine's icon, and then click [Install].

If the [User Account Control] dialog box appears, click [Continue].

The [Found New Hardware] dialog box appears.

4. Click [Locate and install driver software (Recommended)].

If the [User Account Control] dialog box appears, click [Continue].

5. Click [Don't search online].

6. Click [Browse my computer for driver software (advanced)].

7. Insert the provided CD-ROM into the computer's CD-ROM drive.

If the [AutoPlay] dialog box appears, click the [close] button and then proceed to step 8.

8. Click [Browse...], and then specify a location for the printer driver.

If the CD-ROM drive letter is D, the printer driver's source files are stored in "D:\DRIVERS\RPCS\XP_VISTA\ (Language)\DISK1".

9. Click [Next].

If the [Windows can't verify the publisher of this driver software] message appears, click [Install this driver software anyway].

10. Click [Close].

If installation is successful, the icon of the printer connected to the "WSD" port is added to the [Printers] window.



Note

- The port name that follows "WSD" uses random character strings. It cannot be changed freely.
- To stop the installation, click [Cancel] before the installation is complete. When re-installing the WSD Port, right-click the machine's icon in the [Network] window, and then click [Uninstall].



Reference

- p.48 "Making Option Settings for the Printer"

Using as a Windows Network Printer

This describes how to install the RPCS printer driver when using the printer as a Windows network printer.

To use the print server, install the printer driver by selecting "Network printer server", and then select the Windows 2000 / XP / Vista or Windows Server 2003 / 2003 R2 shared printer.

This section assumes that the client has already been configured to communicate with a Windows 2000 / XP / Vista or Windows Server 2003 / 2003 R2 print server. Do not begin the following procedure before the client is set up and configured correctly.

★ Important

- To install the printer driver under Windows 2000 / XP / Vista, and Windows Server 2003 / 2003 R2, you must have an account that has Manage Printers permission. Log on as an Administrators or Power Users group member.
- If you print with a print server connected to the printer using the SmartDeviceMonitor port, Recovery Printing and Parallel Printing cannot be used from the client.
- If you print under Windows XP / Vista or Windows Server 2003 / 2003 R2 print server, notification functions of SmartDeviceMonitor may not be used with the client.

Installing the RPCS Printer Driver

1. Quit all applications currently running.
2. Insert the CD-ROM into the CD-ROM drive.
The installer starts.
3. Select an interface language, and then click [OK].
The default interface language is English.
4. Click [RPCS Printer Driver].
5. The software license agreement appears in the [License Agreement] dialog box.
After reading the agreement, click [I accept the agreement.], and then click [Next >].
6. Select the printer driver you want to use in the [Select Program] dialog box.
You can select several printer drivers.
7. Click [Next >].
8. Select the [Printer Name] check box to select the printer models you want to use.
The printer name can be changed in the [Change settings for 'Printer Name'] box.
9. Double-click the printer name to display the printer settings.

The details shown in [Comment], [Driver], and [Port] vary depending on the operating system, printer model, and port.

10. Click [Port], and then click [Add].

11. Click [Network Printer], and then click [OK].
12. Double-click the computer name you want to use as a print server in the [Browse for Printer] window.
13. Select the printer you want to use, and then click [OK].
14. Check that the port of the selected printer is displayed in [Port].
15. Configure the user code as necessary.

For an RPCS printer driver, a user code can be set after the printer driver installation.

For details about user code, see the printer driver Help.

16. Select the [Default Printer] check box to configure the printer as default.
17. Click [Continue].

The printer driver installation starts.
18. After the installation is completed, select one of the options to restart the computer either now or later, and then click [Finish].

Restart the computer to complete installation.

 **Note**

- To stop installation of the selected software, click [Cancel] before installation is complete.
- Auto Run may not work with certain operating system settings. In that case, launch "Setup.exe" on the CD-ROM root directory.
- A message appears if there is a newer version of the printer driver already installed. If there is, you cannot install the printer driver using Auto Run.
- If you still want to install the printer driver, use [Add Printer]. See "When a Message Appears during Installation of the Printer Driver", Troubleshooting.

Using as a NetWare Print Server / Remote Printer

This describes how to set up the Windows computer used as the NetWare client.

★ Important

- To install this printer driver under Windows 2000 / XP / Vista, and Windows Server 2003 / 2003 R2, you must have an account that has Manage Printers permission. Log on as an Administrators or Power Users group member.
- In an IPv6 environment, NetWare servers cannot be used.

The following explanation assumes NetWare Client is installed on the client computer and the NetWare server environment is correctly set up. Install all necessary client applications before following this procedure.

Set up the printer driver while logging on to the NetWare file server.

1. Insert the CD-ROM into the CD-ROM drive.

The installer starts.

Auto Run may not work with certain operating system settings. In that case, launch "Setup.exe" on the CD-ROM root directory.

2. Select an interface language, and then click [OK].

The default interface language is English.

3. Click [RPCS Printer Drivers].

4. The software license agreement appears in the [License Agreement] dialog box.

After reading the agreement, click [I accept the agreement.], and then click [Next >].

5. Select the printer driver you want to use in the [Select Program] dialog box.

You can select several printer drivers.

6. Click [Next >].

7. Select the [Printer Name] check box to select the printer model you want to use.

The printer name can be changed in the [Change settings for 'Printer Name'] box.

8. Double - click the printer name to display the printer settings.

The details shown in [Comment], [Driver], and [Port] vary depending on the operating system, printer model, and port.

9. Click [Port], and then click [Add].

10. Click [Network Printer], and then click [OK].

11. Double - click the name of the NetWare file server on the network tree.

The created queue is displayed.

12. Select the print queue, and then click [OK].

13. Check that the port of the selected printer is displayed in [Port].

14. Click [Continue].

The printer driver installation starts.

15. Click [Finish] in the [Select Program] dialog box.

16. After the installation is completed, select one of the options to restart the computer either now or later, and then click [Finish].

Restart the computer to complete installation.

17. After restarting the computer, launch the [Printers and Faxes] window, and then open the printer properties.

18. On the [NetWare setting] tab, clear the [Form Feed] and [Enable Banner] check boxes.

Do not select these check boxes since they are automatically selected by the printer driver. If you select the check boxes, the printer may not print correctly.

19. Click [OK] to close the printer properties dialog box.

Note

- To stop installation of the selected software, click [Cancel] before installation is complete.
- The protocol is set to inactive as default. Enable it using SmartDeviceMonitor or Telnet.

Form Feed

Do not use NetWare to configure form feed. Form feed is controlled by the printer driver on Windows. If NetWare form feed is configured, the printer may not print properly.

Follow the procedure below to disable form feed according to the operating system used:

- Under Windows 2000 / XP / Vista or Windows Server 2003 / 2003 R2, clear the [Form feed] check box on the [NetWare Settings] tab in the printer properties dialog box.

Banner Page

Do not use NetWare to configure a banner page.

Follow the procedure below to disable banner pages according to the operating system used:

- Under Windows 2000 / XP / Vista or Windows Server 2003 / 2003 R2, clear the [Enable banner] check box on the [NetWare Settings] tab in the printer properties dialog box.

Printing after Resetting the Printer

Printer to print server connection requires 30 - 40 seconds to resume after the printer is reset. During this period, jobs may be accepted (depending on NetWare specifications) but not printed.

To print after resetting the printer as the remote printer, check on the print server that the remote printer is disconnected, or wait for two minutes before trying to print.

Installing the Printer Driver Using USB

This section explains how to install printer drivers using USB.

Before installing, check that only the operating system is running on the computer and no print jobs are in progress.

You can use the printer driver included on the CD-ROM provided with this machine, or can download it from the manufacturer's Web site.

Windows 2000 - USB

Important

- **To install a printer driver, you must have Administrator privilege. Log on using an account that has Administrator privilege.**

When USB is first used, Found New Hardware Wizard starts, and USB Printing Support is installed automatically.

If the printer driver is already installed and plug-and-play is enabled, the icon of the printer connected to the "USB" port appears in the [Printers] window.

The printer drivers can be installed from the CD-ROM provided with this machine.

If the printer driver is not already installed, follow the printer's plug-and-play instructions to install it from the provided CD-ROM.

1. Connect the machine to the computer using a USB cable.

Connect the USB cable firmly.

2. In the [Found New Hardware Wizard] dialog box, click [Search for a suitable driver for my device (recommended)], and then click [Next >].

3. Select the [Specify location] check box, and then click [Next >].

4. Insert the CD-ROM into the CD-ROM drive.

When Auto Run starts, click [Exit].

To disable Auto Run, press the left [Shift] key when inserting the CD-ROM into the drive and keep it pressed until the computer finishes reading from the CD-ROM.

5. Specify the location where the source files of the printer driver are stored.

If the CD-ROM drive is D, the source files of the printer driver are stored in the following location:

- RPCS
D:\DRIVERS\RPCS\XP_VISTA\{Language}\DISK1
- PostScript 3
D:\DRIVERS\PS\XP_VISTA\{Language}\DISK1

6. Check the printer driver location, and then click [OK].
7. Click [Next >].
8. Click [Finish].

If the printer driver has already been installed, and plug and play is enabled, the icon of the printer connected to the "USB001" port appears in the [Printers] window.

↓ Note

- The number after "USB" varies depending on the number of printers that the computer is connected to.

Windows XP, Windows Server 2003 / 2003 R2 - USB

★ Important

- To install a printer driver, you must have Administrators privilege. Log on using an account that has Administrators privilege.

When USB is first used, Found New Hardware Wizard starts, and USB Printing Support is installed automatically.

If the printer driver is already installed and plug-and-play is enabled, the icon of the printer connected to the "USB" port appears in the [Printers and Faxes] window.

The printer drivers can be installed from the CD-ROM provided with this machine.

If the printer driver is not already installed, follow the printer's plug-and-play instructions to install it from the provided CD-ROM.

1. Connect the machine to the computer using a USB cable.

Connect the USB cable firmly.

2. In the [Found New Hardware Wizard] dialog box, click [Install the software automatically (Recommended)], and then click [Next >].

3. Insert the CD-ROM into the CD-ROM drive.

If Auto Run starts, click [Cancel], and then [Exit].

To disable Auto Run, press the left [Shift] key when inserting the CD-ROM into the drive and keep it pressed until the computer finishes reading from the CD-ROM.

4. Select the [Include this location in the search] check box under [Search for the best driver in these location], and then click [Browse] to select the printer driver location.

If the CD-ROM drive is D, the source files of the printer driver are stored in the following location:

- RPCS
D:\DRIVERS\RPCS\XP_VISTA\ (Language) \DISK1
- PostScript 3

D:\DRIVERS\PS\XP_VISTA\{Language}\DISK1

5. Check the printer driver location, and then click [Next >].
6. Click [Continue].
7. Click [Finish].

If the installation is successful, the icon of the printer connected to the "USB001" port appears in the [Printers and Faxes] window.

 **Note**

- The number after "USB" varies depending on the number of printers that the computer is connected to.

Windows Vista - USB

 **Important**

- To install a printer driver, you must have Administrators privilege. Log on using an account that has Administrators privilege.

If the printer driver is already installed and plug-and-play is enabled, the icon of the printer connected to the "USB" port appears in the [Printers] window.

The printer drivers can be installed from the CD-ROM provided with this machine.

If the printer driver is not already installed, follow the printer's plug-and-play instructions to install it from the provided CD-ROM.

1. **Connect the machine to the computer using a USB cable.**

Connect the USB cable firmly.

The [Found New Hardware] dialog box appears.

2. **Click [Locate and install driver software (Recommended)].**

If the [User Account Control] dialog box appears, click [Continue].

3. **Click [Don't search online].**

A message prompting you to insert the provided CD-ROM appears.

4. **Insert the provided CD-ROM into the computer's CD-ROM drive.**

The printer driver search begins, and a list of printer drivers appears.

5. **Select the printer driver you want to use, and then click [Next].**

If the [Windows can't verify the publisher of this driver software] message appears, click [Install this driver software anyway].

6. **Click [Close].**

If the installation is successful, the icon of the printer connected to the "USB001" port appears in the [Printers] window.

 **Note**

- The number after "USB" varies depending on the number of printers that the computer is connected to.

Printing with Parallel Connection

This describes how to install the RPCS printer driver when using the parallel port.

To use a machine connected using a parallel interface, click [LPT1] when installing the printer driver.

★ Important

- To install this printer driver under Windows 2000 / XP / Vista and Windows Server 2003 / 2003 R2, you must have an account that has Manage Printers permission. Log on as an Administrators or Power Users group member.

Installing the RPCS Printer Driver

1. Quit all applications currently running.
2. Insert the CD-ROM into the CD-ROM drive.

The installer starts.
3. Select an interface language, and then click [OK].

The default interface language is English.
4. Click [RPCS Printer Drivers].
5. The software license agreement appears in the [License Agreement] dialog box.

After reading the agreement, click [I accept the agreement.], and then click [Next >].
6. Select the printer driver you want to use in the [Select Program] dialog box.

You can select several printer drivers.
7. Click [Next >].
8. Select the [Printer Name] check box to select the printer model you want to use.

The printer name can be changed in the [Change settings for 'Printer Name'] box.
9. Double-click the printer name to display the printer settings.

The details shown in [Comment], [Driver], and [Port] vary depending on the operating system, printer model, and port.
10. Check that [LPT1:] is shown in [Port].
11. Select the [Default Printer] check box to configure the printer as default.
12. Click [Finish].

The printer driver installation starts.
13. After the installation is completed, select one of the options to restart the computer either now or later, and then click [Finish].

Restart the computer to complete installation.

 **Note**

- To stop installation of the selected software, click [Cancel] before installation is complete.
- Auto Run may not work with certain operating system settings. In that case, launch "Setup.exe" on the CD-ROM root directory.
- A message appears if there is a newer version of the printer driver already installed. If there is, you cannot install the printer driver using Auto Run. If you still want to install the printer driver, use [Add Printer]. See "Messages Displayed When Installing the Printer Driver", Trouble Shooting.

Making Option Settings for the Printer

Make option settings for the machine using the printer driver when bidirectional communication is disabled.

Conditions for Bidirectional Communication

Bidirectional communication allows information about paper size and feed direction settings to be automatically sent to the printer. You can check machine status from your computer.

- Bidirectional communication is supported by Windows 2000 / XP / Vista, and Windows Server 2003 / 2003 R2.
- If you use the RPCS printer driver and bidirectional communication is enabled under Windows 2000, the [Change Accessories] tab is unavailable.

Note

- The RPCS printer driver supports bidirectional communication and updates the machine status automatically.

To support bidirectional communication, the following conditions must be met:

When connected with parallel cables

- The computer must support bidirectional communication.
- The machine must support bidirectional communication.
- The interface cable must support bidirectional communication.
- The machine must be connected to the computer using the standard parallel cables and parallel connectors.
- Under Windows 2000, [Enable bidirectional support] must be selected, and [Enable printer pooling] must not be selected on the [Ports] tab with the RPCS printer driver.

When connected with the network

- The machine must support bidirectional communication.
- The standard TCP/IP port must be used.
- [Enable bidirectional support] must be selected, and [Enable printer pooling] must not be selected on the [Ports] tab with the RPCS printer driver.
- In addition to the above, following conditions must also be met:
 - The SmartDeviceMonitor for Client port and the TCP/IP protocol must be used. When using the IPP protocol, the IPP port name must include the IP address.
 - [Enable bidirectional support] must be selected, and [Enable printer pooling] must not be selected on the [Ports] tab with the RPCS printer driver.

When connected with USB

- The machine must be connected to the computer's USB port using the USB interface cable (for Windows 2000 / XP / Vista, Windows Server 2003 / 2003 R2).
- The computer must support bidirectional communication.

Note

- Install SmartDeviceMonitor for Client from the supplied CD-ROM.

If Bidirectional Communication Is Disabled

Set up option settings when bidirectional communication is disabled.

Important

- Under Windows 2000 / XP / Vista, and Windows Server 2003 / 2003 R2, Manage Printers permission is required to change the printer properties in the [Printers] folder. Log on as an Administrators or Power Users group member.

1. On the [Start] menu, click [Printers and Faxes].

The [Printers and Faxes] window appears.

When using Windows 2000, point to [Settings] on the [Start] menu, and then click [Printers]. The [Printers] window appears.

When using Windows Vista, click [Control Panel] on the [start] menu, and then click [Printer]. The [Printers] window appears.

2. Click the icon of the printer you want to use.

3. On the [File] menu, click [Properties].

When using Windows Vista, right-click the icon of the printer you want to use, and then click the [Properties].

4. Click the [Change Accessories] tab.

If options in the [Change Accessories] tab are disabled, bidirectional connection is enabled. In this case, no change is necessary for option settings.

If you are using the RPCS printer driver, click the [Change Accessories] tab.

5. Select options installed from the [Select printer options:] area, and then make the necessary settings.

6. Select the total amount of the memory in [Total memory:] when the optional SDRAM module is added.

7. Under [Paper source tray settings:], click the tray to be used, and then select the appropriate size, position, and type for the tray. Select the [Do not use Auto Tray Select] check box to exclude the tray from the targets of automatic tray selection.

8. Click [OK] to close the printer properties dialog box.

Using Adobe PageMaker Version 6.0, 6.5, or 7.0

Under Windows 2000 / XP, or Windows Server 2003 / 2003 R2 with Adobe PageMaker, you need to copy PPD files to the PageMaker folder.

PPD files have the .ppd extension in the folder "DRIVERS\PS\XP_VISTA\ (Language)\DISK1" on the CD-ROM.

The "XP_VISTA" folder inside the "PS" folder is for Windows 2000 / XP, Windows Server 2003 / 2003 R2. Use the folder that is appropriate for the operating system you are currently using.

The third folder "(Language)" may be substituted by an appropriate language name.

Copy the .ppd file to the PageMaker folder.

- **For PageMaker 6.0 default installation**

The directory is "C:\PM6\RSRC\PPD4".

- **For PageMaker 6.5 default installation**

The directory is "C:\PM65\RSRC\USENGLISH\PPD4".

The "USENGLISH" may vary depending on your language selection.

- **For PageMaker 7.0 default installation**

The directory is "C:\PM7\RSRC\USENGLISH\PPD4".

The "USENGLISH" may vary depending on your language selection.

Note

- If the driver is not set correctly after copying the ".ppd" file, printing may not be performed properly.
- When using PageMaker, the optional features that can be selected by the printer driver will not be active. The following procedure describes how to activate the optional printer features.

1. On the [File] menu, click [Print].

The [Print Document] dialog box appears.

2. Make the necessary settings in the [Features] box.

2. Setting Up the Printer Driver

This chapter explains the printer properties and how to make changes to the printer settings.

RPCS - Accessing the Printer Properties

There are two dialog box types of the [Printer Properties] dialog box.

"Multi-tab" is used as an example in this manual. For details about changing the dialog box types, see the printer driver Help.

Multi-tab

This dialog box type is designed for users who often change print settings to perform various printing operations.

Custom Setting

This dialog box type is designed for users who rarely change print settings. This type of dialog box may vary depending on the installed options.

2

Windows 2000 - Accessing the Printer Properties

This describes how to launch printer driver's properties.

Making printer default settings - the printer properties

★ Important

- To change the printer's default settings (including settings for options), log on using an account that has Manage Printers permission. Members of the Administrators and Power Users groups have Manage Printers permission by default.
- You cannot change the printer default settings for individual users. Settings made in the [Printer Properties] dialog box are applied to all users.

1. On the [Start] menu, point to [Settings], and then click [Printers].

The [Printers] window appears.

2. Click the icon of the printer you want to use.

3. On the [File] menu, click [Properties].

The [Printer Properties] dialog box appears.

When you open the [Printer Properties] dialog box for the first time after installing the RPCS printer driver, a confirmation message appears. After you click [OK], the [Printer Properties] dialog box appears.

4. Make the settings you require, and then click [OK].

Note

- The settings you make here are used as the default settings for all applications.
- For details, see the printer driver Help.

Making printer default settings - printing preferences

★ Important

- You cannot change the printer default settings for individual users. Settings made in the [Printer Properties] dialog box are applied to all users.

1. On the [Start] menu, point to [Settings], and then click [Printers].

The [Printers] window appears.

2. Click the icon of the printer you want to use.

3. On the [File] menu, click [Printing Preferences...].

The [Printing Preferences] dialog box appears.

4. Make the settings you require, and then click [OK].

Note

- The settings you make here are used as the default settings for all applications.
- For details, see the printer driver Help.

Making printer settings from an application

You can make printer settings for a specific application.

To make printer settings for a specific application, open the [Printing Preferences] dialog box from that application. The following procedure explains making printer settings for Windows 2000 WordPad as an example of how to make printer settings for a specific application.

1. On the [File] menu, click [Print...].

The [Print] dialog box appears.

2. Select the printer you want to use in the [Select Printer] list.

3. Make the settings you require, and then click [OK].

Note

- Procedures for opening the [Printing Preferences] dialog box vary depending on the application. For details, see the manuals provided with the application.
- Any settings you make using this procedure apply to the current application only.
- General users can change the properties displayed in the [Print] dialog box of an application. Settings made here are used the defaults when printing from the application.

- For details, see the printer driver Help.

Windows XP, Windows Server 2003 / 2003 R2 - Accessing the Printer Properties

2

Making printer default settings - the printer properties

★ Important

- To change the printer's default settings (including settings for options), log on using an account that has Manage Printers permission. Members of the Administrators and Power Users groups have Manage Printers permission by default.
- You cannot change the printer default settings for individual users. Settings made in the [Printer Properties] dialog box are applied to all users.

1. On the [Start] menu, click [Printers and Faxes].

The [Printers and Faxes] window appears.

2. Click the icon of the printer you want to use.

3. On the [File] menu, click [Properties].

The [Printer Properties] dialog box appears.

When you open the [Printer Properties] dialog box for the first time after installing the RPCS printer driver, a confirmation message appears. After you click [OK], the [Printer Properties] dialog box appears.

4. Make the settings you require, and then click [OK].

↓ Note

- The settings you make here are used as the default settings for all applications.
- For details, see the printer driver Help.

Making printer default settings - printing preferences

★ Important

- You cannot change the printer default settings for individual users. Settings made in the [Printer Properties] dialog box are applied to all users.

1. On the [Start] menu, click [Printers and Faxes].

The [Printers and Faxes] window appears.

2. Click the icon of the printer you want to use.

3. On the [File] menu, click [Printing Preferences...].

The [Printing Preferences] dialog box appears.

4. Make the settings you require, and then click [OK].

↓ Note

- The settings you make here are used as the default settings for all applications.
- For details, see the printer driver Help.

Making printer settings from an application

You can make printer settings for a specific application.

To make printer settings for a specific application, open the [Printing Preferences] dialog box from that application. The following procedure explains making printer settings for Windows XP WordPad as an example of how to make printer settings for a specific application.

1. On the [File] menu, click [Print...].

The [Print] dialog box appears.

2. In the [Select Printer] list, select the printer you want to use.

3. Click [Preferences].

The [Printing Preferences] dialog box appears.

4. Make the settings you require, and then click [OK].

↓ Note

- Procedures for opening the [Printing Preferences] dialog box vary depending on the application. For details, see the manuals provided with the application.
- Any settings you make using this procedure apply to the current application only.
- General users can change the properties displayed in the [Print] dialog box of an application. Settings made here are used the defaults when printing from the application.
- For details, see the printer driver Help.

Windows Vista - Accessing the Printer Properties

Making printer default settings - the printer properties

★ Important

- To change the printer's default settings (including settings for options), log on using an account that has Manage Printers permission. Members of the Administrators group have Manage Printers permission by default.

- You cannot change the printer default settings for individual users. Settings made in the [Printer Properties] dialog box are applied to all users.

1. On the [Start] menu, click [Control Panel].

The [Control Panel] window appears.

2. In "Hardware and Sound", click [Printer].

3. Right-click the icon of the printer you want to use, and then click [Properties].

The [Printer Properties] dialog box appears.

When you open the [Printer Properties] dialog box for the first time after installing the RPCS printer driver, a confirmation message appears. After you click [OK], the [Printer Properties] dialog box appears.

4. Make the settings you require, and then click [OK].

↓ Note

- The settings you make here are used as the default settings for all applications.
- For details, see the printer driver Help.

Making printer default settings - printing preferences

★ Important

- You cannot change the printer default settings for individual users. Settings made in the [Printer Preferences] dialog box are applied to all users.

1. On the [Start] menu, click [Control Panel].

The [Control Panel] window appears.

2. In "Hardware and Sound", click [Printer].

3. Right-click the icon of the printer you want to use, and then click [Printing Preferences...].

The [Printing Preferences] dialog box appears.

4. Make the settings you require, and then click [OK].

↓ Note

- The settings you make here are used as the default settings for all applications.
- For details, see the printer driver Help.

Making printer settings from an application

You can make printer settings for a specific application.

To make printer settings for a specific application, open the [Printing Preferences] dialog box from that application. The following procedure explains making printer settings for Windows Vista WordPad as an example of how to make printer settings for a specific application.

1. On the [File] menu, click [Print...].

The [Print] dialog box appears.

2. In the [Select Printer] list, select the printer you want to use.

3. Click [Preferences].

The [Printing Preferences] dialog box appears.

4. Make the settings you require, and then click [OK].

↓ Note

- Procedures for opening the [Printing Preferences] dialog box vary depending on the application. For details, see the manuals provided with the application.
- Any settings you make using this procedure apply to the current application only.
- General users can change the properties displayed in the [Print] dialog box of an application. Settings made here are used the defaults when printing from the application.
- For details, see the printer driver Help.

3. Other Print Operations

This chapter explains the various printing functions, including Sample Print, Locked Print, Hold Print, Stored Print, and PDF Direct Print.

Printing a PDF File Directly

You can send PDF files directly to the machine for printing, without having to open a PDF application.

★ Important

- This function is possible only when the optional PostScript 3 unit is installed.
- This function is possible for genuine Adobe PDF files only.
- Version 1.3, 1.4, 1.5, and 1.6 PDF files are compatible.
- PDF files created using PDF version 1.5 Crypt Filter functions or more than eight DeviceN Color Space components cannot be printed.
- PDF files created using PDF version 1.6 watermark note functions or extended optional contents cannot be printed.
- PDF version 1.7 (Acrobat 8.0) files created without any functions that are exclusive to PDF version 1.7 can be printed.
- Due to reasons such as insufficient memory, some types of high compression PDF files might not be printable.

↓ Note

- Paper size errors may occur when printing on custom size paper.

Printing Method

There are the two methods of printing the PDF files directly, either using the DeskTopBinder Lite, or entering commands.

Using DeskTopBinder Lite

Installing DeskTopBinder Lite

Follow the procedure below to install DeskTopBinder Lite.

1. Quit all applications currently running.
2. Insert the "Scanner Driver and Utilities" CD-ROM into the CD-ROM drive.

The installer starts.

Auto Run may not work under certain operating system settings. In this case, launch "Setup.exe", located on the CD-ROM root directory.

3. Click [DeskTopBinder Lite].

The [DeskTopBinder Lite] dialog box appears.

4. Click [DeskTopBinder Lite], and then click [OK].

5. Follow the instructions on the display to install DeskTopBinder Lite.

If you are required to restart the computer after installing DeskTopBinder Lite, restart the computer and continue the configuration.

3

DeskTopBinder Lite enhancements

Follow the DeskTopBinder Lite enhancement procedure to print PDF files directly.

1. On the [Start] menu, point to [All Programs], [DeskTopBinder], and then click [Extended Features Wizard].

The [Extended Features Wizard] dialog box appears.

2. Click [Start], and then click [Next>] repeatedly until the [Printing Function2] dialog box appears.

3. In the [Printing Function2] dialog box, click [Add...].

The [PDF Direct Print Properties] dialog box appears.

4. Select the driver for this machine, and then click [OK].

The [PDF Direct Print Properties] dialog box closes.

5. Click [Next>] repeatedly until [Finish] appears.

6. Click [Finish].

Function Palette

The Function palette contains buttons for functions that are already configured through DeskTopBinder Lite enhancement. Using these buttons, you can print Windows files, preview printouts, convert images, and register scanners for documents without having to open DeskTopBinder Lite. You can also use these functions simply by dragging a target file to the button corresponding to the required function and dropping it there.

1. On the [Start] menu, point to [All Programs], [DeskTopBinder], and then click [Function Palette].

An icon for the Function palette is added to the task tray displayed at the bottom right of the screen.

2. **Right-click the new icon that has been added to the task tray, and then click [Properties...].**

The [Properties] dialog box appears.

3. **Click the [Contents] tab, select the [PDF Direct Print] check box at the center, and then click [OK].**

The [Properties] screen closes and the [PDF Direct Print] icon is added to the palette.

PDF Direct Printing

Follow the procedure below to print PDF files directly.

1. **Drag the PDF file you want to print to the PDF Direct Printing icon on the Function Palette and drop it there.**

The [Output File List-PDF Direct Print] dialog box appears.

2. **Highlight the PDF file you want to print, and then click [OK].**

The PDF file is printed.

Printing PDF Password-Protected Documents

Follow the procedure below to print password-protected PDF files.

1. **On the [Start] menu, point to [All Programs], [DeskTopBinder], and then click [Extended Features Wizard].**

The [Extended Features Wizard] dialog box appears.

2. **Click [Start], and then click [Next>] repeatedly until the [Printing Function2] dialog box appears.**

3. **In the [Printing Function2] dialog box, click [Properties...].**

The [PDF Direct Print Properties] dialog box appears.

4. **Select the [Use PDF Password] check box at the bottom right of the dialog box, and then click [OK].**

5. **Click [Next>] repeatedly until [Finish] appears.**

6. **Click [Finish].**

The [Extended Features Wizard] dialog box closes.

7. **Drag the PDF file you want to print over the PDF Direct Printing icon on the Function Palette and drop it there.**

The [Output File List - PDF Direct Print] dialog box appears.

8. **Click on the PDF file you want to print, making it appear highlighted, and then click [OK].**

The [PDF Direct Print Properties] dialog box appears.

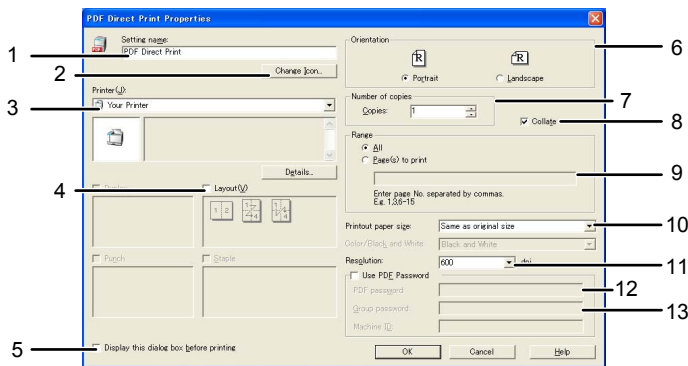
9. In the [PDF password:] box at the bottom right of the dialog box, enter the password for the PDF file you want to print, and then click [OK].

The password-protected PDF file is printed.

Note

- Before printing a password-protected PDF file, perform one of the followings:
 - In the [PDF Direct Print Properties] dialog box, enter the password for the PDF file you want to print
 - Specify a password for the PDF file by selecting [Change PDF Password] in the [PDF Menu] on the machine's control panel.
- If a [PDF Group Password] for the [PDF Menu] has been specified using DeskTopBinder Lite or the machine's control panel, the same group password must be set on the other also.

PDF Direct Print Properties



BLX007S

1. **Setting name:**
Displays the plug-in configuration name (up to 63 single byte characters)
2. **Change Icon...**
Changes the icon displayed on the tool bar.
3. **Printer:**
Displays a list of RPCS drivers that support PDF direct printing.
4. **Layout**
Prints multiple pages on a single sheet.
5. **Display this dialog box before printing**
Appears in PDF direct printing mode if this check box is selected.

6. Orientation:

Specify the original's orientation.

7. Number of copies

Specify the number of copies to print.

8. Collate

Sorts printed sheets.

9. Range:

Specify which paper to print.

10. Printout paper size:

Specify the paper size you want copies to be printed onto.

11. Resolution:

Specify a print resolution.

12. PDF password:

Enter the password for password-protected PDF files. A password-protected PDF file cannot be printed unless its password is entered here.

13. Group password:

If a group password is assigned to DeskTopBinder Lite and this machine, enter the group password in this field. The group password must be entered for printing to start.

Using Commands

You can print PDF files directly, using commands such as "ftp", "sftp", and "lpr".

For details about UNIX commands, see UNIX Supplement.

Using the Print Job Function

This describes how to print files stored in the machine.

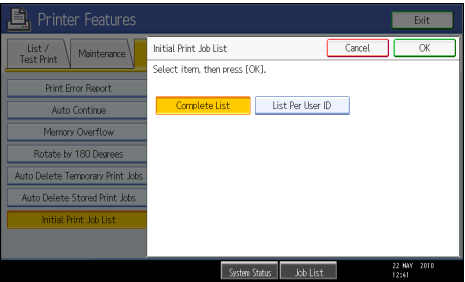
The following types of printing can be selected using the printer driver: Sample Print, Locked Print, Hold Print, and Stored Print.

You can print or delete the print jobs stored in the machine which is sent from computers.

If you select Sample Print, Locked Print, and Hold Print, the print files stored in the machine are deleted after printing is completed. If you select Stored Print, the files remain in the machine even after printing is finished.

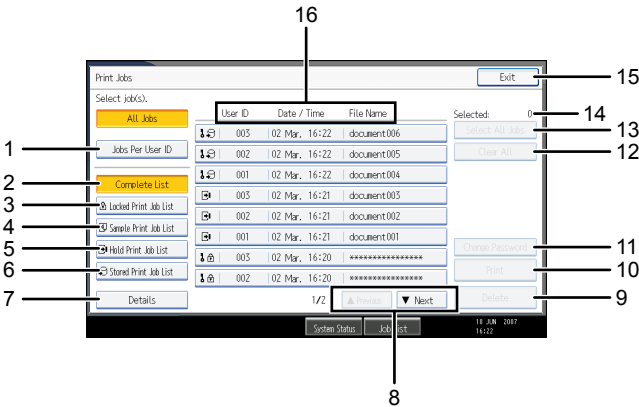
If you press [Print Jobs] on the Printer screen, the Complete List or the List Per User ID screen appears depending on which list type you select from [Initial Print Job List].

3



Complete List

If you select [Complete List] from [Initial Print Job List], the following screen appears:



BAC007S

1. [Jobs Per User ID]
Displays List Per User ID.
2. [Complete List]
Displays all files stored in the machine.
3. [Locked Print Job List]

Displays only Locked Print files stored in the machine.

4. [Sample Print Job List]

Displays only Sample Print files stored in the machine.

5. [Hold Print Job List]

Displays only Hold Print files stored in the machine.

6. [Stored Print Job List]

Displays only Stored Print files stored in the machine.

7. [Details]

Displays details about a selected file.

8. [▲Previous] / [▼Next]

If the list of files does not fit on the screen, scroll up or down to view the list.

9. [Delete]

Deletes a selected file.

10. [Print]

Prints a selected file.

11. [Change Password]

Changes or deletes the password of a file if a password is set. To change the password, press [Change Password], enter the current password, and then enter the new password on the confirmation screen. To delete the password, press [Change Password], leave the entering/confirming a new password box blank, and then press [OK].

You can also set passwords to the Stored Print files that do not currently have passwords.

12. [Clear All]

Clears all selections.

13. [Select All Jobs]

Selects all files stored in the machine.

14. Selected:

Displays number of the files selected.

15. [Exit]

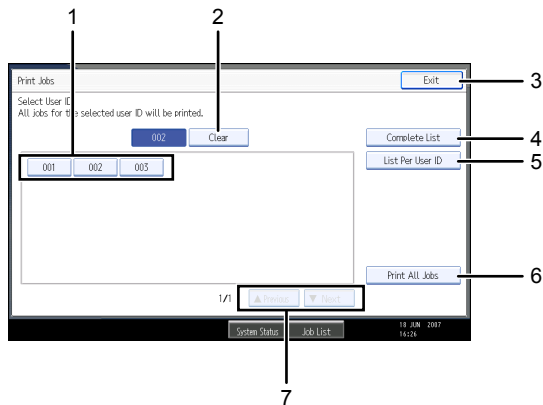
Returns to the Printer screen.

16. User ID, Date / Time: , and File Name: display

Displays the time when the instruction to print the stored files was entered, the User IDs, and the file names.

List Per User ID

If you select [List Per User ID] from [Initial Print Job List], the following screen appears:



BAC008S

1. User ID
Displays the User IDs who sent files to the machine.
2. [Clear]
Clears a selection.
3. [Exit]
Returns to the Printer screen.
4. [Complete List]
Displays all print jobs.
5. [List Per User ID]
Displays the print job list of each ID.
6. [Print All Jobs]
Prints all selected type of files sent by the user ID.
7. [▲Previous] / [▼Next]
If the list of files does not fit on the screen, scroll up or down to view the list.

↓ Note

- Multiple files can be selected on the Print Jobs screen. To clear selection, press the selected print jobs again.
- The display is not updated if a new file is stored while the list of stored files is displayed. To update the display, press [Exit] to return to the Printer screen, and then press [Print Jobs] again.
- If a large number of print jobs is stored in the machine, processing may slow temporarily, depending on which functions are used.
- If you press [List Per User ID] in the Complete List screen, the screen switches to the List Per User ID screen where [Back] appears at the bottom right. Press [Back] to switch to the Complete List screen.
- For details about Sample Print, Locked Print, Hold Print, and Stored Print, see "Printing from the Print Job Screen".

Reference

- p.67 "Printing from the Print Job Screen"

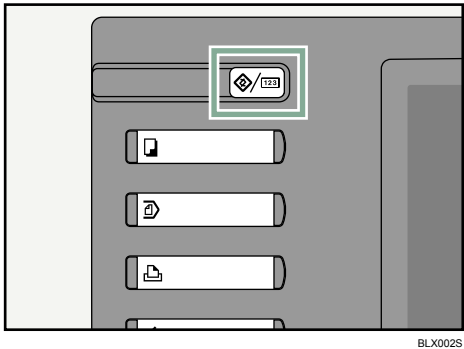
Selecting the Initial Print Job List

Follow the procedure below to set the initial Print Jobs screen, and to show it.

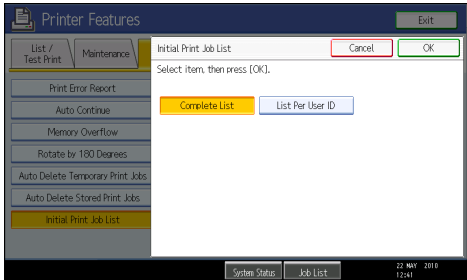
Selecting the Initial Print Job List

3

1. Press the [User Tools/Counter] key.



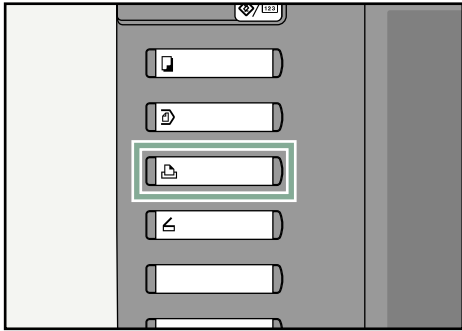
2. Press [Printer Features].
The Printer Features menu appears.
3. On the [System] tab, press [Initial Print Job List].
4. Select either [Complete List] or [List Per User ID].



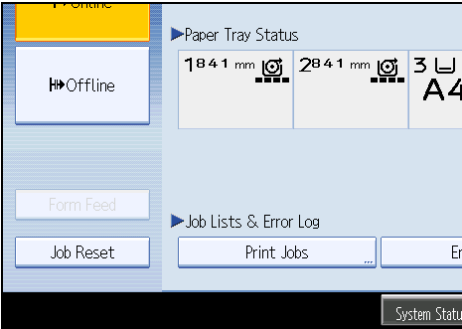
After configuring the settings, the selected type of print job list is displayed.

Displaying a Print Job List

1. Press the [Printer] key.



2. Press [Print Jobs].



Either the Complete List or List Per User ID screen appears.

Printing from the Print Job Screen

This describes about Sample Print, Locked Print, Hold Print, and Stored Print.

Sample Print

Use this function to print only the first set of a multiple-set print job. After you have checked the result, remaining sets can be printed or canceled using the machine's control panel. This can reduce misprints due to mistakes in contents or settings.

★ Important

- A Sample Print file cannot be stored if:
 - the total number of Sample Print, Locked Print, Hold Print, and Stored Print files in the machine is over 100. (The maximum number varies depending on the volume of data in files.)
 - the file contains over 1,000 pages.
 - the machine's sent or stored files total over 3,000 pages. (The total varies depending on the size of the files.)

↓ Note

- If a Sample Print file has not been stored properly, check the error log on the control panel.
- Even after you turn off the machine, stored documents in the machine remain. However, the [Auto Delete Temporary Print Jobs] or [Auto Delete Stored Print Jobs] settings are applied first.
- If the application has a collate option, make sure it is not selected before sending a print job. By default, Sample Print jobs are automatically collated by the printer driver. If a collate option is selected from the application's [Print] dialog box, more prints than intended may be produced.
- If the first set of the Sample Print files is not as you expected and you do not want to print remaining sets, delete the Sample Print file using the control panel. If you print the remaining sets of the Sample Print file, the job in the machine is deleted automatically.
- For details about the error log on the control panel, see "Checking the Error Log".
- For details about the [Auto Delete Temporary Print Jobs] and [Auto Delete Stored Print Jobs], see "Printer Features", General Settings Guide.

📖 Reference

- p.87 "Checking the Error Log"

Printing a Sample Print file

The following procedure describes how to print a Sample Print file with the RPCS printer driver. For details about how to print a Sample Print file with the PostScript 3 printer driver, see PostScript 3 Supplement included as a PDF file on the CD-ROM.

★ Important

- Applications with their own drivers, such as PageMaker, do not support this function.
- If you are using Mac OS X, you need Mac OS X v10.2 or higher version to use this function.

1. Configure Sample Print in the printer driver's properties.

For details about configuring the printer drivers, see the relevant Help files.

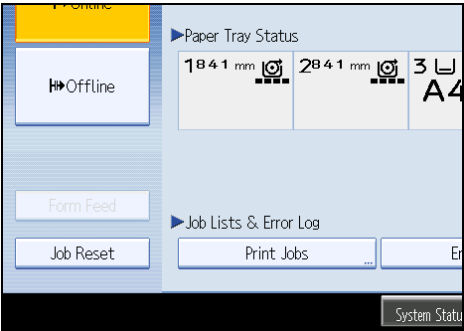
2. Start printing from the application's [Print] dialog box.

Make sure to set more than two copies.

The Sample Print job is sent to the machine, and the first set is printed.

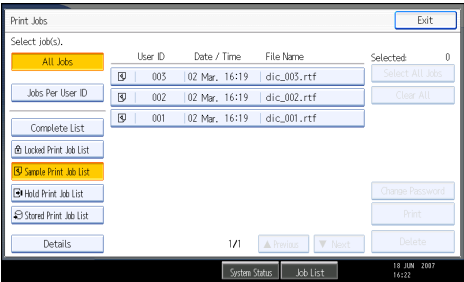
3. On the machine's control panel, press the [Printer] key to display the Printer screen.

4. Press [Print Jobs].



A list of print files stored in the machine appears.

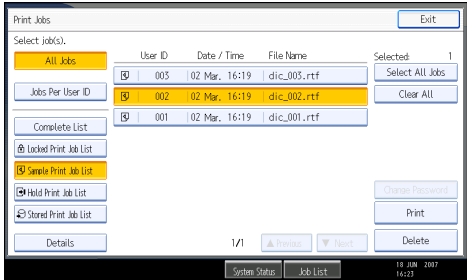
5. Press [Sample Print Job List].



A list of Sample Print files stored in the machine appears.

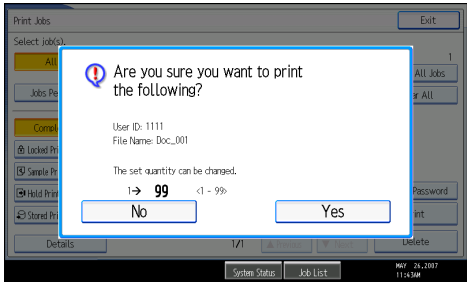
Depending on the security settings, certain print jobs may not be displayed.

6. Select the file you want to print, and press [Print].



7. Enter the new number of sets using the number keys.

3



You can enter up to 99 sets.

Press the [Clear/Stop] to correct any entry mistakes.

8. Press [Yes].

The remaining sets are printed.

Press [No] to cancel printing.

Note

- If you select multiple files, the confirmation screen displays the total number of files to be printed.
- If you select multiple documents and do not specify the number of sets on the confirmation screen, one set less than the number specified on the computer is printed for every selected document. If the number of sets specified on the computer is "1", one set each is printed for every document.
- When printing accumulated sample print documents, you cannot change the numbers of sets.
- When printing is completed, the stored file will be deleted.
- To stop printing after printing has started, press [Exit] until the Printer screen appears, and then press [Job Reset]. The file will be deleted.

Deleting Sample Print files

If you are not satisfied with the sample printout, you can delete the Sample Print file, revise it and print it again until the settings are suitable.

1. Press the [Printer] key to display the Printer screen.**2. Press [Print Jobs].**

A list of the print files stored in the machine appears.

3. Press [Sample Print Job List].

A list of Sample Print files stored in the machine appears.

Depending on the security settings, certain print jobs may not be displayed.

4. Select the file you want to delete, and then press [Delete].

The delete confirmation screen appears.

5. Press [Yes] to delete the file.

The selected file is deleted.

↓ Note

- If you do not want to delete the file, press [No].
- If you select multiple files, the confirmation screen displays the total number of files to be deleted.

Locked Print

Use this function to maintain privacy when printing confidential documents on the machine over a shared network. Usually, it is possible to print data using the control panel once it is stored in this machine.

When using Locked Print, it is not possible to print unless a password is entered on the machine's control panel. Your confidential documents will be safe from being viewed by other people.

★ Important

- A Locked Print file cannot be stored if:
 - the total number of Sample Print, Locked Print, Hold Print, and Stored Print files in the machine is over 100. (The maximum number varies depending on the volume of data in files.)
 - the file contains over 1,000 pages.
 - the machine's sent or stored files total over 3,000 pages. (The total varies depending on the size of the files.)

↓ Note

- If a Locked Print file has not been stored properly, check the error log on the control panel.
- Even after you turn off the machine, stored documents remain. However, the [Auto Delete Temporary Print Jobs] or [Auto Delete Stored Print Jobs] settings are applied first.
- If the application has a collate option, make sure it is not selected before sending a print job. Locked Print jobs are automatically collated by the printer driver as default. If a collate option is selected in the application print dialog box, more sets than intended may be printed.
- After the Locked Print file is printed, the job is automatically deleted.

- For details about the error log on the control panel, see "Checking the Error Log".
- For details about the [Auto Delete Temporary Print Jobs] and [Auto Delete Stored Print Jobs], see "Printer Features", General Settings Guide.

Reference

- p.87 "Checking the Error Log"

Printing a Locked Print file

The following procedure describes how to print a Locked Print file with the RPCS printer driver. For details about how to print a Locked Print file with the PostScript 3 printer driver, see PostScript 3 Supplement included as a PDF file on the CD-ROM.

Important

- Applications with their own drivers, such as PageMaker, do not support this function.
- If you are using Mac OS X, you need Mac OS X v10.2 or higher to use this function.

1. Configure the Locked Print in the printer driver's properties.

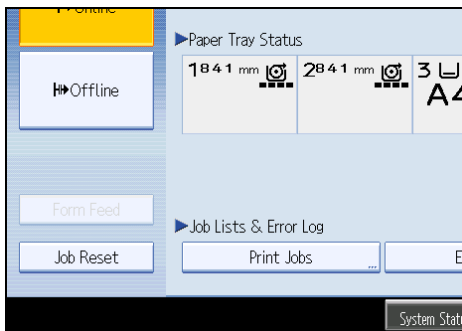
For details about configuring the printer drivers, see the corresponding Help files.

2. Start printing from the application's [Print] dialog box.

The Locked Print job is sent to the machine.

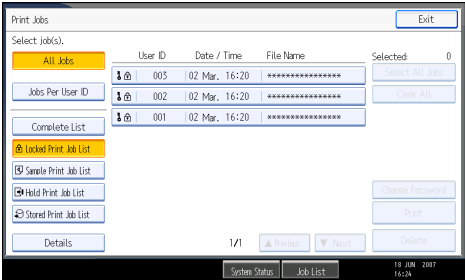
3. On the machine's control panel, press the [Printer] key to display the Printer screen.

4. Press [Print Jobs].



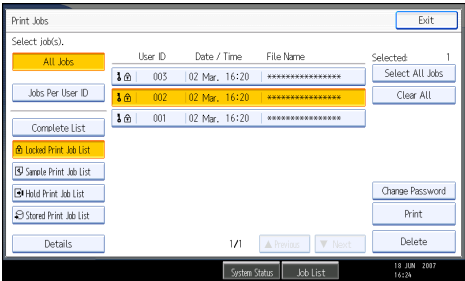
A list of print files stored in the machine appears.

5. Press [Locked Print Job List].



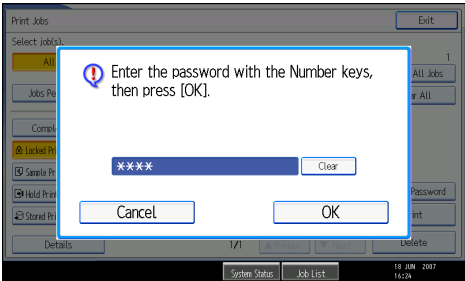
A list of Locked Print files stored in the machine appears.
Depending on the security settings, certain print jobs may not be displayed.

6. Select the file you want to print, and then press [Print].



The password screen appears.

7. Enter the password using the number keys, and then press [OK].



The print confirmation screen appears.
A confirmation screen will appear if the password is not entered correctly. Press [Exit] to enter the password again.
If multiple print files are selected, the machine prints files that correspond to the entered password. The number of files to be printed is displayed on the confirmation screen.
If you forgot your password, ask your file administrator for help.

8. Press [Yes].

The locked file is printed.

Press [No] to cancel printing.

Note

- When printing is completed, the stored file will be deleted.
- To stop printing after printing has started, press [Exit] until the Printer screen appears, and then press [Job Reset]. The file will be deleted.

Deleting Locked Print files

3

1. Press the [Printer] key to display the Printer screen.
2. Press [Print Jobs].
3. Press [Locked Print Job List].

A list of Locked Print files stored appears.

Depending on the security settings, certain print jobs may not be displayed.

4. Select the file you want to delete, and then press [Delete].

The password screen is displayed.

5. Enter the password using the number keys, and then press [OK].

The delete confirmation screen appears.

A confirmation screen will appear if the password is not entered correctly. Press [Exit] to enter the password again.

If you forget your password, ask your file administrator for help.

6. Press [Yes].

The selected file is deleted.

If you do not want to delete the file, press [No].

Note

- If multiple print files are selected, the machine deletes files that correspond to the entered password. The number of files to be deleted is displayed on the confirmation screen.

Hold Print

Use this function to temporarily hold a file in the machine, and print it from the computer or the machine's control panel later.

Important

- A Hold Print file cannot be stored if:
 - the total number of Sample Print, Locked Print, Hold Print, and Stored Print files in the machine is over 100. (The maximum number varies depending on the volume of data in files.)

- the file contains over 1,000 pages.
- the machine's sent or stored files total over 3,000 pages. (The total varies depending on the size of the files.)

Note

- If a Hold Print file has not been stored properly, check the error log on the control panel.
- Even after you turn off the machine, stored documents in the machine remain. However, the [Auto Delete Temporary Print Jobs] or [Auto Delete Stored Print Jobs] settings are applied first.
- If the application has a collate option, make sure it is not selected before sending a print job. By default, Hold Print jobs are automatically collated by the printer driver. If a collate option is selected from the application's Print dialog box, more prints than intended may be produced.
- For details about the error log on the control panel, see "Checking the Error Log"
- For details about the [Auto Delete Temporary Print Jobs] and [Auto Delete Stored Print Jobs], see "Printer Features", General Settings Guide.

Reference

- p.87 "Checking the Error Log"

Printing a Hold Print file

The following procedure describes how to print a Hold Print file with the RPCS printer driver. For details about how to print a Hold Print file with the PostScript 3 printer driver, see Postscript 3 Supplement included as a PDF file in the supplied CD-ROM.

Important

- Applications with their own drivers, such as PageMaker, do not support this function.
- If you are using Mac OS X, you need Mac OS X v10.2 or higher to use this function.

1. Configure Hold Print in the printer driver's properties.

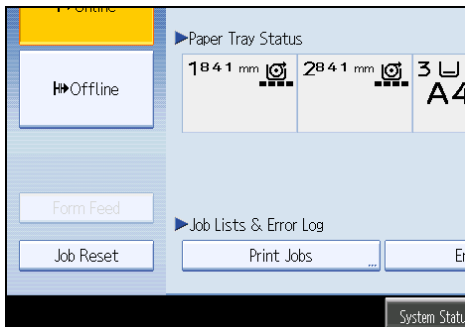
For details about configuring the printer drivers, see the relevant Help files.

2. Click [Details...], and then enter a User ID in the [User ID:] box.**3. Start printing from the application's [Print] dialog box.**

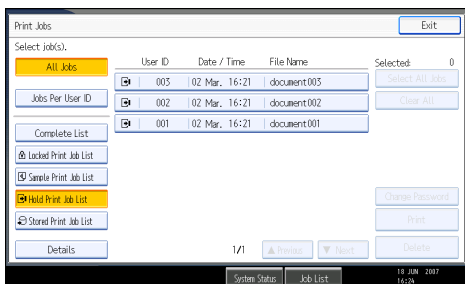
The Hold Print job is sent to the machine and stored.

4. On the machine's control panel, press the [Printer] key to display the printer screen.

5. Press [Print Jobs].



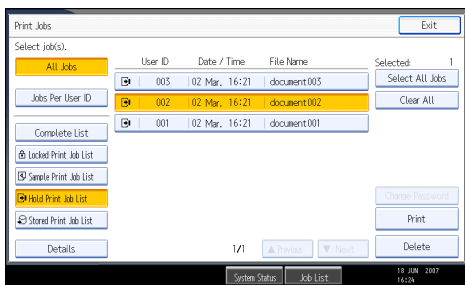
6. Press [Hold Print Job List].



A list of Hold print files stored in the machine appears.

Depending on the security settings, certain print jobs may not be displayed.

7. Select the file you want to print, and press [Print].



The confirmation screen appears.

8. Press [Yes].

The Hold Print file is printed.

Press [No] to cancel printing.

Note

- When printing is completed, the stored file is deleted.
- To stop printing after printing has started, press [Exit] until the Printer screen appears, and then press [Job Reset]. The file will be deleted.

- If you select multiple files, the confirmation screen displays the total number of files to be printed.
- For details about setting printer drivers, see the printer driver Help.
- You can also print or delete a Hold Print file from Web Image Monitor. For details, see Web Image Monitor Help.

Deleting Hold Print files

3

1. Press the [Printer] key to display the Printer screen.

2. Press [Print Jobs].

A list of print files stored in the machine appears.

3. Press [Hold Print Job List].

A list of Hold Print files stored in the machine appears.

Depending on the security settings, certain print jobs may not be displayed.

4. Select the file you want to delete, and then press [Delete].

The delete confirmation screen appears.

5. Press [Yes] to delete the file.

The selected file is deleted.

If you do not want to delete the file, press [No].

Note

- If you select multiple files, the confirmation screen displays the total number of files to be deleted.

Stored Print

Use this function to store a file in the machine, and then print it from the computer or the machine's control panel later.

Jobs are not deleted after they are printed, so the same job need not be re-sent in order to print multiple copies.

Important

- A Stored Print file cannot be stored if:
 - the total number of Sample Print, Locked Print, Hold Print, and Stored Print files in the machine is over 100. (The maximum number varies depending on the volume of data in files.)
 - the file contains over 1,000 pages.
 - the machine's sent or stored files total over 3,000 pages. (The total varies depending on the size of the files.)

Note

- If a Stored Print file has not been stored properly, check the error log on the control panel. Even after you turn off the machine, stored documents remain. However, the [Auto Delete Temporary Print Jobs] or [Auto Delete Stored Print Jobs] settings are applied first (see "Printer Features", General Settings Guide).
- If the application has a collate option, make sure it is not selected before sending a print job. By default, Stored Print jobs are automatically collated by the printer driver. If a collate option is selected from the application's Print dialog box, more prints than intended may be produced. You can optionally set a document title and a password of a Stored Print file. For details about a password setting, see the printer driver Help.
- For details about the error log on the control panel, see "Checking the Error Log".
- For details about the [Auto Delete Temporary Print Jobs] and [Auto Delete Stored Print Jobs], see "Printer Features", General Settings Guide.

Reference

- p.87 "Checking the Error Log"

Printing a Stored Print file

The following procedure describes how to print a Stored Print file with the RPCS printer driver. For details about how to print a Stored Print file with the PostScript 3 printer driver, see Postscript 3 Supplement included as a PDF file on the supplied CD-ROM.

Important

- Applications with their own drivers, such as PageMaker, do not support this function.
- If you are using Mac OS X, you need Mac OS X v10.2 or higher to use this function.

1. Configure Stored Print in the printer driver's properties.

You can select two methods of Stored Print:

- [Stored Print]
Stores the file in the printer and prints it later using the control panel.
- [Store and Normal Print]
Prints the file at once and also stores the file in the machine.

For details about configuring the printer drivers, see the relevant Help files.

2. Click [Details...], and then enter a User ID in the [User ID:] box.

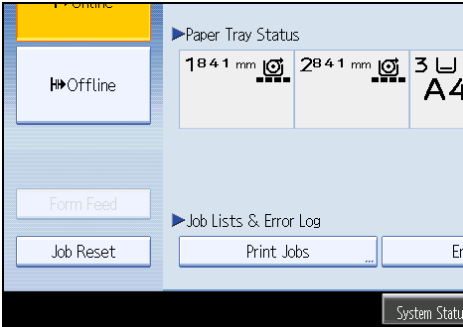
You can also set a password. The same password must be entered when printing or deleting.

3. Start printing from the application's [Print] dialog box.

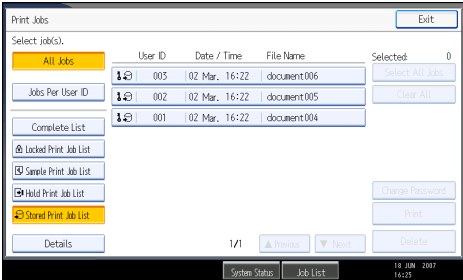
The Stored Print job is sent to the machine and stored.

4. On the machine's control panel, press the [Printer] key to display the Printer screen.

5. Press [Print Jobs].

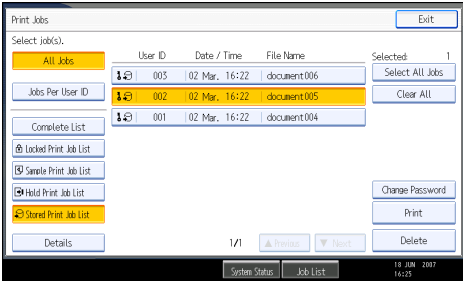


6. Press [Stored Print Job List].



A list of Stored Print files stored in the machine appears.

7. Select the file you want to print, and press [Print].



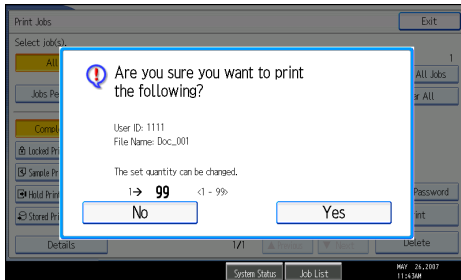
The confirmation screen appears.

If you set a password in the printer driver, a password confirmation screen appears. Enter the password.

If multiple print files are selected, and some of these require a password, the machine prints files that correspond to the entered password and files that do not require a password. The number of files to be printed is displayed on the confirmation screen.

If you forgot your password, ask your file administrator for help.

8. Enter the number of sets using the number keys.



You can enter up to 99 sets.

Press the [Clear/Stop] key to correct any entry mistakes.

9. Press [Yes].

The Stored Print file is printed.

Press [No] to cancel printing.

Note

- If you select multiple files, the confirmation screen displays the total number of files to be printed. If you select multiple documents, set numbers are determined based on the smallest set number specified for a selected document.
- When printing accumulated stored print documents, you cannot change the numbers of sets.
- To stop printing after printing has started, press [Exit] until the Printer screen appears, and then press [Job Reset]. A Stored Print file is not deleted even if [Job Reset] is pressed.
- The Stored Print file that sent to the machine is not deleted unless you delete a file or select [Auto Delete Stored Print Jobs] (see "Printer Features", General Settings Guide).
- For details about setting printer drivers, see the printer driver Help.
- You can also print or delete a Stored Print file from Web Image Monitor. For details, see Web Image Monitor Help.

Deleting Stored Print files

1. Press the [Printer] key to display the Printer screen.

2. Press [Print Jobs].

A list of print files stored in the machine appears.

3. Press [Stored Print Job List].

A list of Stored Print files stored in the machine appears.

Depending on the security settings, certain print jobs may not be displayed.

4. Select the file you want to delete, and press [Delete].

The delete confirmation screen appears.

If you set the password in the printer driver, enter the password to delete.

If multiple print files are selected, and some of these require a password, the machine deletes files correspond to the entered password and files that do not require a password. The number of files to be deleted is displayed on the confirmation screen.

If you forgot your password, ask your file administrator for help.

5. Press [Yes] to delete the file.

The selected file is deleted.

If you do not want to delete the file, press [No].

Note

- If you select multiple files, the confirmation screen displays the total number of files to be deleted.

Printing from the Jobs Per User ID Screen

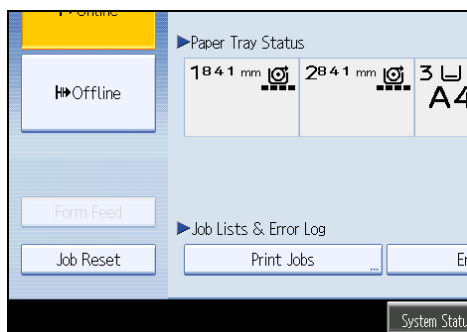
This describes how to print the files saved in the machine from the User ID screen.

Printing the Selected Print Job

1. Press the [Printer] key.

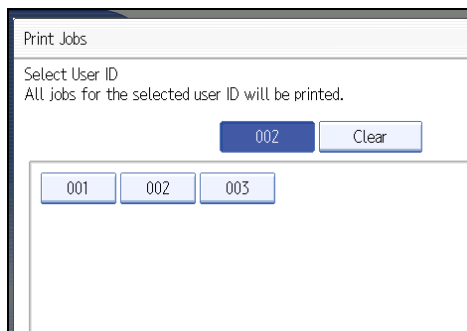
The Printer screen appears.

2. On the Printer screen, press [Print Jobs].



A list of user IDs whose files are stored in the machine appears.

3. Press the user ID whose file you want to print.

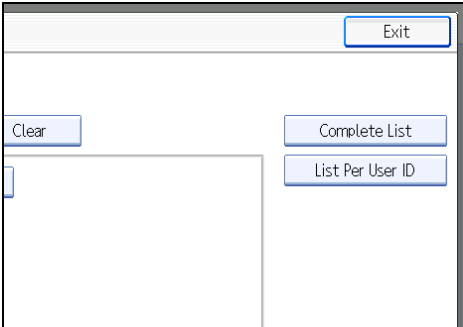


You cannot select multiple user IDs at the same time.

Press [▲Previous] or [▼Next] to scroll through the list.

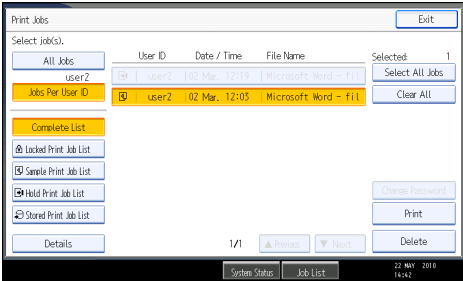
Press [Clear] to cancel a selection.

4. Press [List Per User ID].



The print job list of the selected user ID appears.

5. Select the desired print jobs.



To cancel a selection, press the highlighted print job again. To clear all selections, press [Clear All].

6. Press [Print].

The confirmation screen appears.

7. Press [Yes].

The selected files are printed.

Note

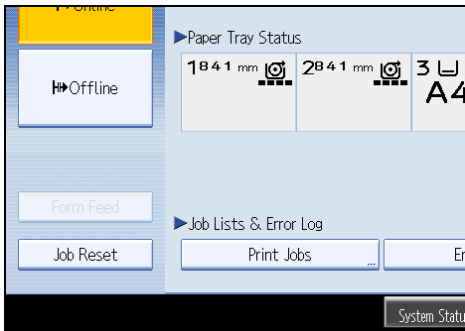
- If you select multiple files, the confirmation screen displays the total number of files to be printed.

Printing All Print Jobs

1. Press the [Printer] key.

The Printer screen appears.

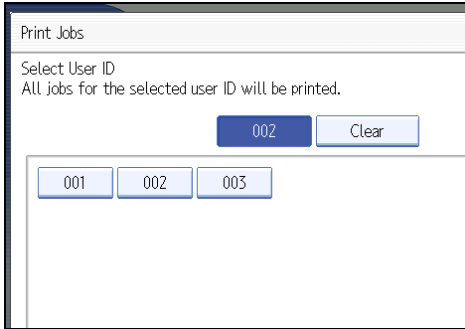
On the Printer screen, press [Print Jobs].



A list of user IDs whose files are stored in the machine appears.

3

2. Press the user ID whose file you want to print.

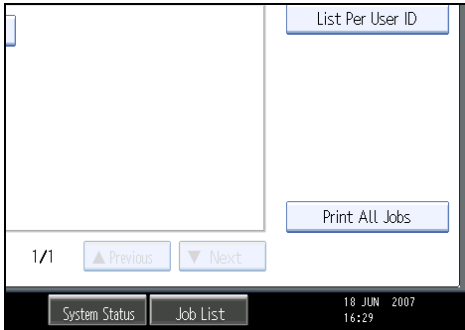


You cannot select multiple user IDs at the same time.

Press [▲Previous] or [▼Next] to scroll through the list.

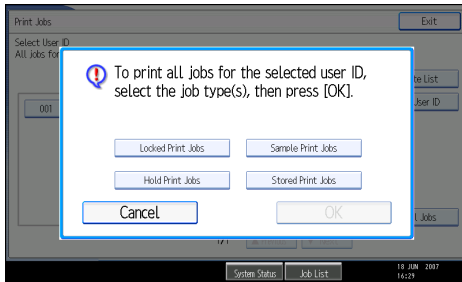
Press [Clear] to cancel a selection.

3. Press [Print All Jobs].



If the selected user ID has multiple types of print jobs, the selection screen of the print job type appears.

4. Select the desired print job type, and then press [OK].



The confirmation screen appears.

The confirmation screen does not appear if the selected ID has only one type of print job.

5. Press [Yes].

The selected files are printed.

↓ Note

- After printing is completed, Sample Print, Locked Print, and Hold Print files are deleted.
- You cannot select a print job that is not stored under the selected user ID.
- If you select multiple Sample Print files and do not specify the number of sets on the confirmation screen, one set less than the number specified on the computer is printed for every selected document. If the number of sets specified on the computer is "1", one set each is printed for every document.
- If you select Stored Print, the number you set on the confirmation screen is applied to all files of the selected print job type. If you do not set a quantity, the minimum number is applied to all files.
- If you select Locked Print, enter the correct password. If there are multiple passwords, the machine prints only files that correspond to the entered password.
- If you select Stored Print files, and some of these require a password, the machine prints files that correspond to the entered password and files that do not require a password.
- The confirmation screen displays the total number of files that have the selected user ID to be printed.

Canceling a Print Job

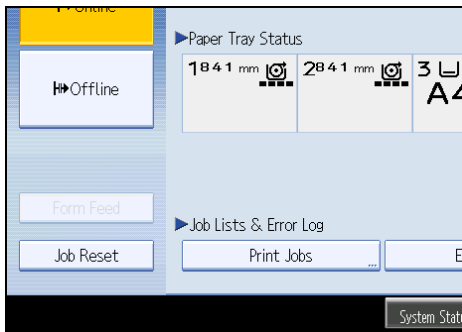
This section gives instruction to stop printing from the computer or the control panel.

Canceling a Print Job Using the Control Panel

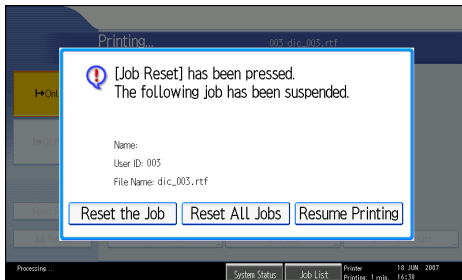
1. Press the [Printer] key.

The Printer screen appears.

2. Press [Job Reset].



3. Press [Reset the Job] or [Reset All Jobs].



- [Reset the Job]: cancels the print job currently being processed.
- [Reset All Jobs]: cancels all jobs in the print queue.
- [Resume Printing]: resumes printing print jobs.

A confirmation message appears.

4. Press [Yes] to cancel the print job.
5. Press [No] to return to the previous display.

Windows - Canceling a Print Job from the computer

You can cancel a print job from the computer if transferring print jobs is not completed.

1. Double-click the printer icon on the Windows task tray.

A window appears, showing all print jobs currently queued for printing. Check the current status of the job you want to cancel.

2. Select the name of the job you want to cancel.

3. On the [Document] menu, click [Cancel].

4. Press the [Printer] key on the machine's control panel.

Note

- If the machine is shared by multiple computers, be careful not to accidentally cancel someone else's print jobs.
- If the machine is connected to the computer using a parallel cable, sent print jobs may be canceled if [Reset All Jobs] is pressed while "Waiting for print data..." is on the control panel. After the interval set in [I/O Timeout] in Printer Features has passed, the next print job can be sent. A print job sent from a different client computer will not be canceled in this case.
- Under Windows XP / Vista, or Windows Server 2003 / 2003 R2, click [Cancel] on the [Document] menu.
- Under Windows 2000, you can also open the print job queue window by double-clicking the machine icon in the [Printers] machine window (the [Printers and Faxes] window under Windows XP and Windows Server 2003/2003 R2).
- You cannot stop printing data that has already been processed. For this reason, printing may continue for a few pages after you press [Job Reset].
- A print job containing a large volume of data may take considerable time to stop.

Checking the Error Log

If files could not be stored due to printing errors, identify the cause of the errors by checking the error log on the control panel.

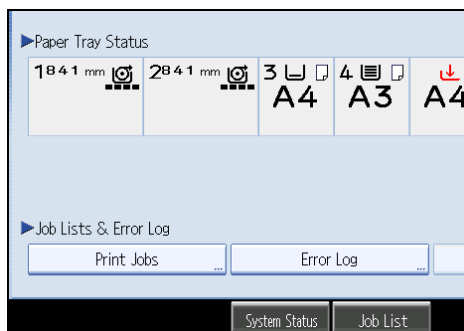
★ Important

- The most recent 30 errors are stored in the error log. If a new error is added when there are 30 errors already stored, the oldest error is deleted. However, if the oldest error belongs to one of the following print jobs, it is not deleted. The error is stored separately until the number of those errors reaches 30. You can check any of these print jobs for error log information.
 - Sample Print
 - Locked Print
 - Hold Print
 - Stored Print
- If the main power switch is turned off, the error log is deleted.

1. Press the [Printer] key.

The Printer screen appears.

2. Press [Error Log].



An error log list appears.

Depending on the security settings, certain errors may not be displayed.

3. Press the desired job list.

You can select job list from [Complete List], [Locked Print Job List], [Sample Print Job List], [Hold Print Job List], or [Stored Print Job List].

4. Select the print file you want to check, and then press [Details].

A detailed error log appears.

Press [▲Previous] or [▼Next] to scroll the error files.

Note

- Press [Exit] after checking the log.
- Press [Back to List] to return to the error log list.
- To print files that appear in the error log, resend them after stored files have been printed or deleted.
- [Error Log] is not available in simplified display mode. To view the error log, you must first switch to normal display mode by pressing [Simplified Display] to turn into the normal display mode.

Spool Printing

Spool Printing allows print jobs transferred from a computer to be temporarily stored, and then prints them after they are transferred. This shortens printing time as it maximizes printer efficiency.

★ Important

- During Spool Printing, the hard disk is accessed and the Data In indicator blinks. Turning off the computer or machine during Spool Printing can damage the hard disk. Also, if the computer or machine is turned off during Spool Printing, spooled jobs will be deleted. Therefore, do not turn the power of the computer or machine off during Spool Printing.
- If data is sent to the machine using other protocols besides "diprint", "lpr", "ipp", "ftp", "sftp", "smb", and "ws-printer", Spool Printing cannot be performed.

Setting Spool Printing

Spool Printing can be set using telnet or Web Image Monitor.

- Using Web Image Monitor

For details, see Network Guide or Help for more information.

- Using telnet

Type in "spoolsw spool on" to set Spool Printing.

For details, see Network Guide for more information about telnet.

Viewing a list of spool jobs on the control panel

If Spool Printing is set, a list of spooled jobs can be viewed on the control panel screen.

Press the [Printer] key, and then press [Spooling Job List]. A list of spooled jobs appears.

- Deleting jobs

Select files to be deleted, and then press [Delete].

Viewing/Deleting spool jobs in Web Image Monitor

Start Web Image Monitor and enter the machine's IP address in the address bar. This displays the top page.

For details, see Network Guide.

↓ Note

- Up to a maximum of 150 jobs at once can be spool printed.
- If Spool Printing is not set, you cannot select [Spooling Job List].
- Printing the first page with Spool Printing will be slow.
- The computer requires less print processing time when large amounts of data are spooled.
- Stored spool jobs can be viewed or deleted using Web Image Monitor.

Printing with the Folding Finisher

You can fold printed paper by installing the optional folding finisher. Make sure you read the following precautions when using the optional folding finisher.

★ Important

- Make option settings for the machine using the printer driver when bidirectional communication is disabled.
- Be sure to set the paper size and paper orientation in the printer driver when using combined printing (layout).
- If you are feeding paper from the bypass tray, you cannot use the folding finisher function.

Connecting to the optional folding finisher unit

You cannot use the optional folding finisher unit under the following conditions or settings:

- The optional folding finisher unit is not attached to this machine.
- The bypass tray is selected for the feeding tray.
- The paper size and orientation is not properly set.
- [Film] and [Translucent Paper] is selected for the paper type.
- The Folding Finisher Tray is not selected as the paper output tray.
- The [Normal Print] is not selected as the printing method.

↓ Note

- Depending on the application, print settings may not be enabled and printed output may not be as expected.
- When setting Collate in the printer driver, make sure that the Collate check box is cleared in the application's [Print] dialog box. If Collate is enabled in the application, printing will not be as intended.
- When printing restarts after removing jammed paper, the printing position may be different, depending on the location of the jam.
 - If the paper jam occurred in the optional finisher, printing will restart from the top page of the data currently being printed, or from the page where the paper jam occurred.
 - If the paper jam occurred in the machine, printing will restart from the page where the paper jam occurred.
 - Even if the paper jam occurred in the machine, the error will not be cleared unless the cover of the finisher is opened and closed.
- For details about combined printing (layout), see the printer driver Help.
- For details about optional folding finisher, see "Appendix", About This Machine.
- To remove paper misfeeds, see "Clearing Misfeeds", Trouble Shooting.

Fold Types

This section explains fold types to take when using the folding finisher.

You can select types of fold are as follows:

Fan Fold

Applies horizontal zigzag folds relative to paper feed orientation. Select a panel width (the width of the fold) in the list.

- Fan fold with Margin

Applies horizontal zigzag folds to create a filing margin. You can specify the filing margin on the folding finisher. When folded, the sheet width is 210 mm / 8.5 in.

- Special Fan Fold 1 / Special Fan Fold 2

Two frequently used special folds are preset on the folding finisher.

Standard Fold

Applies both horizontal and vertical zigzag folds relative to paper feed orientation. When folded, the sheet size is A4, 11 × 8.5 in, 12 × 9 in.

Margin Fold

Applies folds to create a filing margin. When folded, the sheet size is A4, 11 × 8.5 in, 12 × 9 in.

Narrow Standard Fold (220-240V)

Applies folds for inserting sheets into A4 filing pockets. When folded, the sheet size is 297 × 170 mm.

Programmed Fold

Allows you to pre-specify a fold for each standard size on the folding finisher. Specify the fold combination that you require in the list. The folding finisher detects the size of the paper and applies the specified fold.

Special Fold

There are two frequently used special folds preset on the folding finisher.

Do Not Fold

No folding is applied to sheets that are output from the Folding Finisher Tray.

Folding Finisher Cautions

This section explains about the fold precautions.

Folding type and orientation

Fold Type	Paper Size
Fan Fold	<p>A0, B1, A1, B2, A2, B3, A3, B4, 36"×48", 34"×44", 30"×42", 24"×36", 22"×34", 21"×30", 18"×24", 17"×22", 12"×18", 11"×17", 8 1/2"×14", 8 1/2"×13", Custom Size: approx. 210 - 914.4 mm (8.27 - 36 in) wide; fold width × 30 fold panels (equivalent) long.</p>
Not Fold	<p>Output can be made on all paper sizes supported on this machine.</p> <p>Custom Size:</p> <ul style="list-style-type: none"> 10 ppm models approximately 210 - 914.4 mm (8.27 - 36 inches) in width, and 210 - 15000 mm (8.27 - 590.55 inches) in length. 14 ppm models approximately 210 - 914.4 mm (8.27 - 36 inches) in width, and 210 - 30000 mm (8.27 - 1181.10 inches) in length.

When the folding is cancelled

- When the output is from the bypass tray
- When the folding type and orientation is not properly set.
- When a paper type that cannot be folded is selected.
- When the Folding Finisher Tray is not selected for the paper output tray.
- When [Normal Print] is not selected for the printing method.

↓ Note

- If the optional folding finisher is connected but the fold settings are incorrect, you might not be able to make settings for the optional device using the printer driver.
- Printing starts only after jobs from other functions (such as the copier) that are using the folding finisher have finished.
- Depending on the application you are using, printer settings might not be applied and printing might not be as required.

Collate

When printing multiple documents such as handouts for meetings, you can separate sets into order. This function is known as "Collate". Collate stores data transmitted from a computer to the machine memory or hard disk drive. The followings are the three types of Collate:

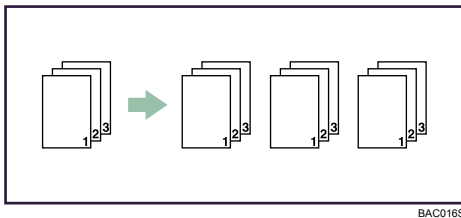
★ Important

- If Auto Continue occurs on the first set, Collate will be canceled.
- If forced printing occurs on the first set, Collate will be canceled.
- When setting Collate in the printer driver settings, make sure that a collate option is not selected in the application's print settings. If a collate option is selected, printing will not be as intended.

Collate Types

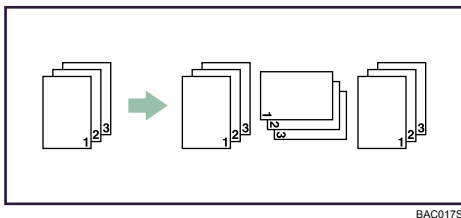
- Collate

Printed output is assembled as sets in sequential order.



- Rotating Collate

Every other print set is rotated by 90 degrees.



When Rotate Collate is cancelled

If the following functions are selected, Collate or Shift Collate will be applied even if Rotating Collate is selected:

- If jobs containing pages of various sizes are set.
- When output tray is specified.
- If custom size paper is set.

↓ Note

- When Rotating Collate has been selected, printing speed will be slower than with other collate functions.

- Set Collate and Rotating collate when using the RPCS printer driver.
- Separation sheets cannot be inserted if "Slip Sheet" is specified.
- Follow the procedure below when using a printer driver other than the RPCS:
 - Set Collate and Rotating Collate in the printer driver.
 - If you cannot make Shift Collate even with the optional finisher installed, options may not be set up correctly in the printer driver. Correct the printer driver's option settings.
 - For details, see the printer driver Help.

4. Printing GL/2 and TIFF Files

This chapter describes the functions and settings of the GL/2 and TIFF Filter. It also explains how to install the HDI Driver.

Printable Files

This machine can print GL/2 and TIFF/CALS files.

GL/2

Complies with the Pen Plotter command set HP-GL (Hewlett Packard's Graphics Language), the Raster Plotter command set HP-GL/2 (Hewlett Packard's Graphics Language Standard), and HP-RTL (HP's Raster Transfer Language) developed by HP (Hewlett Packard).

HP-GL emulates the HP-GL commands of HP7550A.

HP-GL/2 and HP-RTL emulate the HP-GL/2 commands of HP DesignJet 600.

You can print from CAD applications that use HP-GL and HP-GL/2 commands.

↓ Note

- For details about specification of printable files, see "Printable GL/2 Files".

📖 Reference

- p.112 "Printable GL/2 Files"

TIFF/CALS

Print TIFF (Tagged Image File Format) format bitmap files from UNIX workstations and DOS/V computers.

TIFF/CALS files are rasterized by the machine. "Rasterization" refers to the process of printing dot by dot from the bitmap image. This process does not require a printer driver so printing can be set from either the machine or the Web browser.

↓ Note

- You can print GL/2 and TIFF/CALS files using PostScript 3.
- For details about specification of printable files, see "Printable TIFF Files".

📖 Reference

- p.123 "Printable TIFF Files"
- p.128 "Printable CALS Files"

To Print

The print settings made by other manufacturer's GL/2 and HDI drivers cannot be inherited.

When printing from GL/2 and TIFF Filter, "Auto Paper Select" becomes disabled, and a paper size different to that specified in the data might be requested.

If you print a black and white (monochrome) image at a resolution that the machine does not support, the print image might contain streaks or moiré patterns.

Follow the procedures below to print GL/2 and TIFF/CALS files from the machine.

- Using Web Printing Tool
GL/2 and TIFF/CALS files
- Using HDI Driver
GL/2 files
- Using the printing commands
GL/2 and TIFF/CALS files

Note

- For details about print commands, see "Printing Commands", Network Guide.

Using Web Printing Tool

About Web Printing Tool

Web Printing Tool allows you to print files, make print settings, and acquire system logs, via a Web browser.

Recommended Web browsers are as follows:

- Windows:
Microsoft Internet Explorer 6.0.28 or a later version
FireFox 1.5.0 or a later version
- Macintosh:
Safari 2.0 or a later version
FireFox 1.5.0 or a later version

Java applet

Web Printing Tool requires Java Runtime Environment. Download it from the following web site:

<http://www.java.com/>

- About the certificate

- If you start Web Printing Tool, a dialog box about issuing the certificate appears. Click [Run].
- Select the [Always trust content from this publisher.] check box. No warning will be shown after starting Web Printing Tool.
- If you click [Cancel], Web Printing Tool will not start. Close the Web browser, and then restart Web Printing Tool.
- The certificate becomes effective after the [Security] setting under [Advanced] on the Java control panel is set as follows:
 - Allow user to grant permissions to signed content
 - Allow user to grant permissions to content from an untrusted authority
- The default Java Runtime setting is effective.
- Compatible languages:

Web Printing Tool does not change the language settings of this machine. If necessary, change the language using the Web browser.

Note

- Make the JavaScript, and Java applet following settings (required):
 - Enable JavaScript.
 - Install Java Runtime Environment (JRE 1.5 or later version.) and enable applet.
 - Pop up blocking may not be set, depending on the Web browser you are using. If this is the case, the Help file will not be properly displayed.
- If you are using Java Runtime Environment version 1.6.0 - 1.6.0_03, and the [Temporary Internet Files] is enabled, Web Printing Tool might not start properly. If this is the case, delete the temporary files, and then disable "Temporary Internet Files" in the Java Control Panel. To open the Java control panel, click [Control Panel] on the [Start] menu, and then click [Java].
- If you are using a proxy server, change the Web browser settings. Contact your administrator for information about the settings.
- We recommend using Web Printing Tool in the same network.
- You cannot access to the machine from outside the firewall.
- When using the machine under DHCP, the IP address may be automatically changed by the DHCP server settings. Enable DDNS setting on the machine, and then connect using the machine's host name.
- Alternatively, set a static IP address to the DHCP server.
- When you are using Firefox, fonts and colors may be different, or tables may be out of shape.
- When using a host name under Windows Server 2003/2003 R2 with IPv6 protocol, perform host name resolution using an external DNS server. The host file cannot be used.

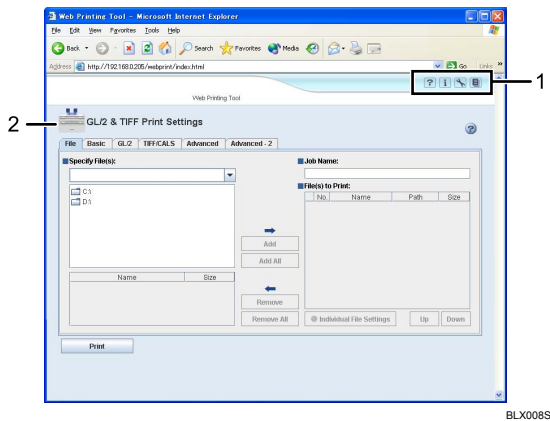
Displaying top page

This section explains the how to display Web Printing Tool.

1. Start your Web browser.
2. Enter "http://(machine's address)/webprint/index.html" in the address bar of a Web browser.

Top Page of Web Printing Tool appears.

If the machine's host name has been registered on the DNS or WINS server, you can enter it.



1. Header area

The area at the top of the Web Printing Tool page is called the header area. The following items appear in the header area.



[Help] button

Click to display Help.



[Version Information] button

Click to display Web Printing Tool version information.



[GL/2 & TIFF Initial Configuration] button

Click to display the [GL/2 & TIFF Initial Configuration] page.



[System Log] button

Click to display the [System Log] page.

2. GL/2 & TIFF Print Settings

The area at the top of the Web Printing Tool page is the GL/2 & TIFF Print Settings area.

Note

- To open the [GL/2 & TIFF Initial Configuration] or [System Log] page, you must enter the administrator password.
- For details, see Web Printing Tool's Help.

Basic operations of Web Printing Tool

1. In the menu area to the left, click the menu item corresponding to the function you want to know about.

The page for the selected menu item appears in the work area to the right.

2. Use the displayed page to make settings for printing.

4

About password authentication



- The password authentication is required to display the [GL/2 & TIFF Initial Configuration] page or [System Log] page.
- Click the link in the header area. Enter the password in the authentication dialog box that appears.
- If you enter an invalid password, authentication fails and an error message appears. Click [OK] in the message box, and then enter the password again. If you enter an invalid password three times, the top page of Web Printing Tool appears. Click the link in the header area to attempt authentication again.
- Password authentication is effective until the [GL/2 & TIFF Initial Configuration] page or [System Log] page is closed.
- You can use either Web Printing Tool or the control panel to set GL/2 and TIFF Initial Configuration. The settings are the same for both Web Printing Tool and the control panel.

Note

- For details about the login password, see Security Reference.

How to use help

While using Web Printing Tool, you can view explanations about operations of the currently displayed page and the meaning of individual settings and items.

- To view Help top page: click the  button in the header area.
- To view Web Printing Tool Help page: click the  button in GL/2 and TIFF Print Settings area.
- To close Help: click the [Close] button inside the Help window.

Using From the Printing Commands

The following explains printing operations using the "lpr", "rcp", and "ftp" commands.

↓ Note

- Match the data format of the file to be printed with the emulation mode of the printer.
- If the message "print requests full" appears, no print jobs can be accepted. Try again when sessions end. For each command, the amount of possible sessions is indicated as follows:
 - lpr: 5 (When the spool printing function is available: 10)
 - rcp, rsh: 5
 - ftp: 3
- Enter the file name in a format including the path from the directory executing commands.

lpr

When specifying a printer by IP address

```
c:> lpr -S(printer's IP address) [-ol] \(\pass name)\(file name)
```

When using a host name instead of an IP address

```
c:> lpr -S(printer's host name) [-ol] \(\pass name)\(file name)
```

When printing a binary file, add the "-ol" option (lowercase O, and lowercase L).

When using a printer with the host name "host" to print a PostScript file named "file 1" located in the "C:PRINT" directory, the command line is as follows:

```
c:> lpr -Shost -Pfiletype=RPS -ol C:\PRINT\file1
```

rcp

First, register the printer's host name in the hosts file.

```
c:> rcp [-b] \(\pass name)\(file name) [(pass name)\(file name)...] (printer's host name):
```

When using a printer with the host name "host" to print a file named "file 1" or "file 2" located in the "C:PRINT" directory, the command line is as follows:

```
c:> rcp -b C:\PRINT\file1 C:\PRINT\file2 host:
```

↓ Note

- In file names, "*" and "?" can be used as wild cards.
- When printing a binary file, add the "-b" option.
- For details about a host name instead of an IPv4 address, see "Special Operations under Windows", Network Guide.

ftp

Use the "put" or "mput" command according to the number of files to be printed.

When one file is printed

```
ftp> put \(\pass name\) \(file name\)
```

When multiple files are printed

```
ftp> mput \(\pass name\) \(file name\) [\(\pass name\) \(file name\)...]
```

Follow the procedure below to print using the "ftp" command.

1. **Formulate the printer's IP address or the host name of the hosts file printer as an argument and use the "ftp" command.**

```
% ftp printer's IP address
```

2. **Enter the user name and password, and then press the [Enter] key.**

For details about the user name and password, consult your network administrator.

User:

Password:

When user authentication is set, enter a login user name and password.

3. **When printing a binary file, set the file mode to binary.**

```
ftp> bin
```

When printing a binary file in ASCII mode, print may not come out correctly.

4. **Specify files to be printed.**

The following shows the examples of printing a file named "file 1" in the "C:PRINT" directory and printing file 1 and file 2.

```
ftp> put C:\PRINT\file1
```

```
ftp> mput C:\PRINT\file1 C:\PRINT\file2
```

5. **Quit ftp.**

```
ftp> bye
```

Note

- "=", ",", "_", and ";" cannot be used for filenames. File names will be read as option strings.
- For "mput" command, option can not be defined.
- For "mput" command, "*" and "?" can be used as wild cards in file names.
- When printing a binary file in ASCII mode, print may not come out correctly.

Print Settings for GL/2 & TIFF Filter

This section explains the GL/2 & TIFF Filter settings that you can set using the control panel. GL/2 & TIFF Filter settings are applied to GL/2 and TIFF files printed from Web Printing Tool and the printing commands.

Priority of Settings

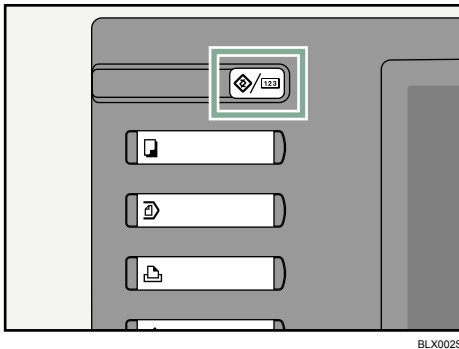
- Settings changed using the control panel take priority.
- You cannot change GL/2 & TIFF Filter initial configuration made using Web Printing Tool, if the setting was changed using the control panel and is currently in effect.
- GL/2 & TIFF Filter is ineffective during the printing of GL/2 files using the HDI driver. Settings made using an application have priority over GL/2 & TIFF Filter settings.

Note

- The settings are the same for both Web Printing Tool and the control panel.
- For details about making settings using Web Printing Tool, see Web Printing Tool Help.

Adjusting the Print Settings for GL/2 & TIFF Filter

1. Press the [User Tools/Counter] key on the control panel.



2. Press [Extended Feature Settings].

3. Press [GL/2 & TIFF].

4. Press the setting you want to make.

- General Settings
Can be applied regardless of data format.
- GL/2 Print Settings
Can be applied to GL/GL2 data only.
- TIFF/CALS Print Settings

Can be applied to TIFF/CALS data only.

5. Configure the settings.

6. When you have finished making settings, press [Exit].

Print Settings for GL/2 & TIFF is displayed.

7. Press the [User Tools/Counter] key.

The initial screen appears.

General Settings

Specify basic print settings.

Paper Tray Setting

Select which input tray to use for printing. If you select "Auto Paper Select" the machine automatically selects an input tray based on the paper size and type specified by the job.

Margin Tolerance

Specify an area of allowance for the gap between the print area and the paper size when using "Auto Paper Select".

Output Exit

Specify the output tray for printed paper.

Auto Tray Switching

Enables the machine to switch automatically from an emptied paper tray to another tray that contains the same size, orientation, and type of paper, without interrupting the job.

Paper Type



Select a paper type.

Cut Method

Select the paper cut method. When roll paper is selected for input tray, the cut method is enabled.

- Preset Cut (**220-240V**)

Cuts the roll paper to a standard size that fits the width of the sheets that are set in the paper tray.

Example: If 594 mm wide sheets are set in Tray 1 and 841 mm wide sheets in Tray 2, an image measuring 590 × 840 mm will be printed on a standard size cut sheet measuring 841 × 594 mm  or 594 × 841 mm . Note that the input tray's settings might change the orientation of the printed sheet.

- Preset Cut (**208-240V**)

Cuts the roll paper to a standard size that fits the width of the sheets that are set in the paper tray.

Example: If 24 in wide sheets are set in Tray 1 and 36 in wide sheets in Tray 2, an image measuring 23×35 in will be printed on a standard size cut sheet measuring 36×24 in □ or 24×36 in □. Note that the input tray's settings might change the orientation of the printed sheet.

Note

- If you specify [Auto Paper Select] for [Paper Tray Setting], the roll paper that requires the shortest cut is selected. However, if the print job is an image that exceeds 36×48 in, the job is cancel.
- If you specify the input tray for [Paper Tray Setting], the image area that does not fit inside the standard size is not printed.
- Synchro Cut (**220-240V**)

Cuts the roll paper according to the width of the sheets that are set in the paper tray and the length of the image.

Example: If 594 mm wide sheets are set in Tray 1 and 841 mm wide sheets in Tray 2, an image measuring 590×840 mm will be printed on a cut sheet measuring 841×590 mm □ or 594×840 mm □. Note that the input tray's settings might change the orientation of the printed sheet. Use this method to print images that exceed the standard size, such as an 841×1220 mm image.

- Synchro Cut (**208-240V**)

Cuts the roll paper according to the width of the sheets that are set in the paper tray and the length of the image.

Example: If 24 in wide sheets are set in Tray 1 and 841 mm wide sheets in Tray 2, an image measuring 23×35 in will be printed on a cut sheet measuring 36×23 in □ or 24×35 in □. Note that the input tray's settings might change the orientation of the printed sheet. Use this method to print images that exceed the standard size, such as an 36×49 in image.

Note

- If you specify [Auto Tray Select] for [Paper Tray Setting], the tray with the roll paper that requires the shortest cut is selected.
- If both the width and length of the data exceed 36 in, sheet's long edge is cut to the maximum 36 in.
- If you specify the input tray for [Paper Tray Setting], the sheet is cut to the long edge length. If the image exceeds the cut sheet size, the image area that does not fit inside the cut size is not printed.

Reduce / Enlarge

Specify a scaling mode to reduce or enlarge the print size of documents.

Magnification Ratio

Specify the ratio when Magnification Ratio is selected for "Reduce / Enlarge".

Margin Adjustment

Specify the inside margin around the originals. The margin is 0 to 100 mm in 1 mm (0 to 4.00 " in 0.10 ") increments.

Extraction

Specify whether to uncompress and extract compressed job data before printing it. Selecting this option reduces print errors due to corrupted archives, but slows the print process slightly.

Mirror Image

Prints images with left and right reversed.

Positive / Negative

Prints images with black and white inverted.

Dithering

Select a dither pattern appropriate for the print image.

 **Note**

- If you select [Auto] or [DTP] for this setting, the image is printed using [Photograph].

Original Ratio Fine Adjustment: Horizontal

Adjusts the horizontal size difference between original data and printed image for scaled drawings that must be accurately printed. The ratio range is 99.0 - 101.0%, which you can adjust in increments of 0.01%.

Original Ratio Fine Adjustment: Vertical

Adjusts the vertical size difference between original data and printed image for scaled drawings that must be accurately printed. The ratio range is 99.0 - 101.0%, which you can adjust in increments of 0.01%.

Directional Magnification 1 - Directional Magnification 10

Specify the vertical and horizontal value when Magnification Ratio is selected for "Reduce / Enlarge".

Paper Folding

If the folding finisher is installed, select a paper folding method.

Rotate by 180 Degrees

Rotate image by 180 degrees when printing.

GL/2 Print Settings

Specify print settings of HP-GL and HP-GL/2 data.

Hard Clip

Enables and disables output hard clip limits given by PS commands. If "Off" is selected, the actual drawing area will be the printed area.

Centring (Centering)

Print images at the centre of the hard clip area.

SP Command

Specify whether to eject paper at receipt of "SP;" and "SP0;" command.

Transparency Mode

Specify the transparent processing mode by MC command and TR command.

- Always Active
Always activates MC/TR commands in HP-GL2 data come into effect.
- Use File Defaults
Follows MC/TR commands in HP-GL2 data.
- Always Inactive
Ignores MC/TR commands in HP-GL2 data forcibly.

Source Transparency Mode

Specify the transparent processing method by "Source Transparency Mode (ESC*v#N)".

- Always Active
Always activates ESC*v#N commands in RTL data come into effect.
- Use File Defaults
Follows ESC*v#N commands in RTL data.
- Always Inactive
Ignores ESC*v#N commands in RTL data forcibly.

Adjust X Offset

Specify X-axis offset for origin of the drawing area in 1 mm (0.10 ") increments within the range between -199 and 199 mm (-8 and 8 ").

Adjust Y Offset

Specify Y-axis offset for origin of the drawing area in 1 mm (0.10 ") increments within the range between -199 and 199 mm (-8 and 8 ").

Brightness

Adjust brightness for RGB-color and grayscale image data. Higher brightness value lightens the entire image while lower brightness value darkens the image.

Pen Width

Select whether to use file defaults settings, or to specify width for each pen.

Pen Density

Select whether to use file defaults settings, or to specify density for each pen.

Pen 0 Custom Settings - Pen 15 Custom Settings

Specify width and/or density for each pen when the "Use File Defaults" option is selected. Pen Width can be selected from the list of 0.00 - 12.00 mm, however actual width of printed image could be slightly different from the specified width because lines are printed in dots. Pen Density can be specified in 10% increments within the range between 0 and 100%.

TIFF Print Settings

Specify print settings of TIFF and CALS data.

Centring (Centering)

Print drawing area at the center of the paper.

Adjust X Offset

Specify X-axis offset for origin of the drawing area in 1 mm (0.10 ") increments within the range between -199 and 199 mm (-8 and 8 ").

Adjust Y Offset

Specify Y-axis offset for origin of the drawing area in 1 mm (0.10 ") increments within the range between -199 and 199 mm (-8 and 8 ").

Brightness

Adjust brightness for RGB-color and grayscale image data. Higher brightness value lightens the entire image while lower brightness value darkens the image.

Using the HDI Driver for AutoCAD

You cannot use the HDI driver to select the orientation (portrait or landscape) of paper on the bypass tray.

If you use the HDI driver to print onto standard size paper, alert messages will not appear, even if the paper orientation set in the print data does not match the orientation of the paper in the tray.

Setup CD-ROM

4

The HDI driver for the AutoCAD 2000 series is provided to work specifically with the AutoCAD 2000 series of CAD applications.

Using the HDI driver reduces data size during print out, enabling faster print out.

Also, the HDI driver is specially designed for use in environments where Auto-CAD 2000 applications are running.

★ Important

- If you are already using a printer of the same maker, you cannot use different HDI drivers simultaneously.
- If you still want to install the HDI driver, delete the older HDI driver. To use the HDI driver, you must install it beforehand. The HDI driver is stored on the CD-ROM provided with the machine.

↓ Note

- The Installation CD-ROM contains a Readme file that you must read. It contains important information about the HDI driver and notes on using the application.
- The Readme file is in the "DRIVERS\HDI\AC200X\ (Language)" folder on the Installation CD-ROM. If you use the AutoCAD 2008, the Readme file is in the "DRIVERS\HDI\AC2008\ (Your OS Edition) \ (Language)" folder.
- This section assumes the user has full knowledge of Windows functions and procedures. For details about Windows, see the Windows manual.
- This section assumes the machine is connected to the single computer. The screens you see on your machine might not be the same as those shown in this manual, depending on the environment you are using.
- The "Driver" folder contains folders other than the "HDI" folders. This emulation can only use HDI and printer drivers that are stored in the "HDI" folders.

CD-ROM Folders

The CD-ROM contains following folders and files:

DRIVERS	HDI	AC2000	
		AC2000i	
		AC2002	
		AC2004	
		AC2007	
		AC2008	x64
			x86

Contains HDI drivers for AutoCAD applications and the Readme files.

Installing the HDI Driver

The following explains how to install the HDI driver under Windows 2000. All the procedures are the same for Windows 2000/XP/Vista, Windows XP/Vista (64bit), Windows Server 2003/2003 R2, and Windows Server 2003/2003 R2 (64bit).

 **Important**

- AutoCAD applications must be installed before you install the HDI driver.
- This section explains installation using AutoCAD 2008.
- Quit all applications currently running before beginning the HDI driver installation.

1. Insert the CD-ROM into the CD-ROM drive.

The installer starts.

2. On the [Start] menu, click [Control Panel].

3. Double-click [Autodesk Plotter Manager].

[Autodesk Plotter Manager] appears only if there is the AutoCAD 2000 series application already installed.

4. Double-click [Add-A-Plotter Wizard].

5. Click [Next >].

6. Click [Next >].

7. Click [Have Disk].

8. Select [CD-ROM] in [My Computer].

Check that the CD-ROM provided with the machine is shown.

9. Double-click [DRIVERS], and then double-click [HDI].

10. Click the file that matches the AutoCAD application you want to use.

AC2000: AutoCAD 2000/AutoCAD LT2000

AC2000i: AutoCAD 2000i/AutoCAD LT2000i

AC2002: AutoCAD 2002/AutoCAD LT2002

AC2004: AutoCAD 2004/AutoCAD LT2004/AutoCAD 2005/

AutoCAD LT2005/AutoCAD 2006/AutoCAD LT2006

AC2007: AutoCAD 2007/AutoCAD LT2007

AC2008: AutoCAD 2008/AutoCAD LT2008

Check the driver you selected matches the AutoCAD version you want to use. If they do not match, an error screen appears. See the HDI driver's Readme if this occurs.

11. Select the driver you want to install, and then click [Open].**12. In "Manufacturers", select the manufacturer. Then, in "Models", select the printer driver. Then click [Next >].****13. Click [Next >].****14. Select [Port], then select the port you want to use, and then click [Next >].**

Select the network port you want to use in the [Port] option button. If a local port is selected, printing may not be performed properly.

15. Confirm the plotter name you want to use is selected, and then click [Next >].

Installation is complete. If the installation is successful, the HDI driver is added to the [AutoDesk Plotter Settings (Plotter window)] window, and it can be selected from [Printing Devices] during printing. For details about screens and printing procedures, see the online Help. To display the online Help, click [Help] on the printer driver screen.

16. Click [Finish].

Displaying and Printing Help

Displaying Help

This section explains installation using AutoCAD 2008.

1. On the [File] menu, click [Plot...].

The [Plot...] dialog box appears.

2. Check the HDI driver you want to use appears in the [Name:] list in the "Printer/plotter" area, and then click [Properties...].**3. Click [Custom Properties] on the [Device and Document Settings] tab.**

The [Custom Properties] button appears under the screen.

4. Click [Custom Properties...].
5. The Help screen appears if you click [Help].

Printing Help

Printing by Book

If you select the book icon, you can print several topics at once.

Select the book icon in the [Help Topics] dialog box, and then click [Print...].

Printing by Topic

There are two methods of printing by topic:

- Select the topic icon in the [Help Topics] dialog box, and then click [Print...].
- Display the topic you want to print, and then click [Print...].

Printable GL/2 Files

HP-GL Specifications

The GL/2 & TIFF filter modules that are included in GL/2 & TIFF filter products emulate the HP-GL commands of HP7550A. However, the command syntax differs (as shown below) according to the settings of the GL/2 and TIFF modules.

HP-GL command syntax

4

The syntax of HP-GL commands is as follows: a section containing two alphabetical characters, a parameter section (certain commands only), and a terminator section.

If you specify multiple parameters at the end, a separator must be inserted between each parameter.

The HP-GL/2 filter can use the separators and terminators shown below.

Syntax Elements	Format and Range
Separator	comma or space
Terminator	; or LF or another command
Integer parameter	-999999999 to +999999999
Real number parameter	-999999999.999999999 to +999999999.999999999

Plotter setup commands

The HP-GL/2 filter does not support the following plotter setup command and will ignore it if it is included:

Command	Description
GM	Changes buffer sizes, but not the size of the input or output buffer.

Commands for plotting Circles, Ovals, and Multiple Shapes

The HP-GL/2 filter does not support the following Circles/Ovals/Multiple Shapes plotting commands and will ignore them if they are included:

Command	Description
UF	Specifies the fill pattern at parallel interval.
PT	Specifies the overprint interval.

Commands for plotting basic characters

The HP-GL/2 filter does not support the following basic character plotting commands and will ignore them if they are included:

Command	Description
DU	Uses the user unit to specify the character plotting direction.
SU	Uses the user unit to specify the character size.
BL	Stores character strings for labeling in the label buffer.
OL	Obtains information from output capable character strings in the buffer.
IC	Obtains the location of certain ASCII character inside the NCP cell.
OB	Outputs the co-ordinates of the upper right and lower left corners around the character on receipt of this command.
LE	Uses the 7240/7245 plotter to underline or change the character width under character set 20 to 28.
PB	Plots the content of the label buffer.

4

Commands for extended character sets

The HP-GL/2 filter supports the following character sets: Standard ASCII (0); kanji (101); and 8, 18, and 43 (katakana). The HP-GL/2 filter does not support the commands for multiple character sets and making optional characters:

Command	Description
CM	Specifies modes for selecting the character set and using it.
DS	Specifies the character set selected by parameter at the character slot.

Command	Description
IV	Calls up the character slot (G0 - G3) on the right half (GR) or left half (GL) of the code table.
CC	Specifies smoothness of characters when the character set when a character set between 10 to 19 and 40 to 49 is selected.
UC	Plots symbols not defined in the character set.

Commands for changing the plotting domain

4

The HP-GL/2 filter does not support the following commands for changing the plotting domain according to the HP plotter and will ignore them if they are included:

Command	Description
OW	Enables the left down and right down coordinates of the window to be output.

Plotter control commands

The HP-GL/2 filter does not support the following commands for plotter control according to the HP plotter and will ignore them if they are included:

Command	Description
AP	Specifies the automatic pen function.
FS	Specifies the pen pressure.
AS	Specifies the pen acceleration.
VS	Specifies the maximum speed when the pen is lowered.
VA	Automatically adjusts the speed of the pen when it is lowered to the speed at which the computer sends the coordinates.
VN	Used when disabling the VA command.
GP	Used when collecting pens of the same type and color into one group.
SG	Selects the group specified by the GP command.
CV	Controls the curve line generator.

Command	Description
AF	Feeds paper only when something is being plotted on the current paper.
AH	Feeds half of the paper only when something is being plotted on the current paper.
EC	Controls the paper cut function.
NR	Puts the plotter into the "NOT READY" state.
BF	Stores the HP-GL command following this command to the replot buffer until the RP command is received.
RP	Re-plots data using the data in the re-plot buffer.
WD	Displays messages on the plotter's front panel LCD, and applies the plotter's keyboard mode.
KY	Assigns the programmed status to the plotter's front panel function key.
OK	Enables the number of the first pressed front panel function key to be output.
GC	Specifies the group count number used in response to the OG command.
OG	Enables the current group account information to be output.
BP	Sounds the plotter's beeper.

Digitization commands

The HP-GL/2 filter does not support the following digitization related commands and will ignore them if they are included:

Command	Description
DP	Sets the plotter to digitize mode.
OD	Enables the last co-ordinates of digitized positions and the pen state preceding this command to be output.
DC	Cancels digitize mode.

Commands for obtaining plotter information

The HP-GL/2 filter does not support the following commands for obtaining information from the plotter and will ignore them if they are included:

Command	Description
IM	Sets conditions for notifying the host computer of HP-GL errors.
OA	Enables the pen's coordinates to be output.
OC	Enables the co-ordinates and condition of the pen during the last effective command to be output.
RC	Enables the cursor's coordinates and status to be output.
OE	Enables the value of the initial error made before this command was executed to be output.
OF	Enables the value of the plotter unit by 1 mm at each coordinate to be output.
OI	Enables the character strings that distinguish each plotter to be output.
OO	Enables the eight option parameters to be output.
OS	Enables the plotter's status to be output in decimal form.
OT	Enables the carousel's shape and operating conditions of the stool to be output.

Line attribute commands

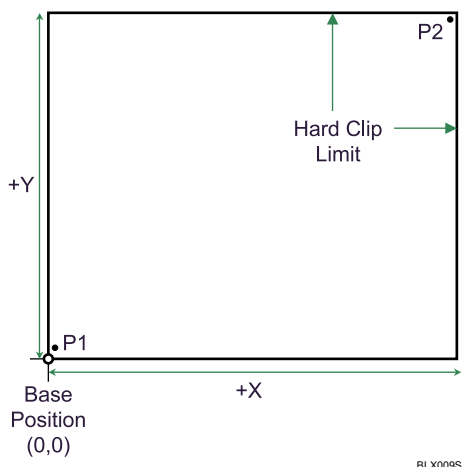
The HP-GL/2 filter does not support the following attributes for the line attribute setting commands and will ignore them if they are included:

Command	Description
End of the line Triangle (Value = 3)	Makes the ends of lines rounded.
Line joint (Type = 2) Triangle Joint (Value = 3)	Makes joints circular.

HP-GL/2 filter coordinates

Like other HP plotters, the HP-GL/2 plots using single 0.025 mm units. When plotting on paper however, the printer's or plotter's resolution determines the plot units.

The following explanation covers the HP-GL/2 filter's start coordinates, plotting origin, and scaling point.



4

The HP-GL/2 filter uses the initial coordinates, plotting origin, and scaling point to begin processing input data. Input data that has minus coordinates and originates from other than the bottom left area (P1) or the hard clip limit (the PS command-specified area) is shifted by the minimum value of each last drawn coordinate to the plotting origin (where X and Y intersect, in the minus direction).

Likewise, the coordinates of images that are drawn in the plus direction are shifted similarly. Images that exceed the hard clip limit are not output.

If the HP-GL/2 filter's clipping option is enabled (overriding the hard clip limit of the PS command), the data is output with the hard clip limit reset to the image's minimum and maximum value for each coordinate, and independent of the original position and the hard clip limit.

HP-GL/2 Specifications

The GL/2 & TIFF filter modules that are included in GL/2 & TIFF filter products emulate the HP-GL commands of the HP DesignJet 600 but differ according to the settings of the GL/2 and TIFF modules. The following commands are also different:

Character group commands

This section explains limitations to commands that belong to the character group shown in the HP-GL/2 reference manual.

Label default status

The table below shows the HP-GL/2 filter's label default status.

Label Attribute	Status
Character set	ASCII code (Roman8)
Label terminator	ASCII code end of text command character ETX (Decimal code 3)
Label's starting point	Current pen position
Character size	Character width 2.83 mm, Character height 3.75 mm (Below A0 size) Character width 4.23 mm, Character height 5.21 mm (Above A0 size)
Label orientation	Horizontal
Margins between characters and lines	Normal (no extra margins added)
Character tilt	No tilt
Character overprint mode	Solid (total overprint)
Font	Courier

Character codes that can be used with LB commands

The HP-GL/2 filter supports three character codes for specifying LB command parameters: ASCII (Roman 8), JIS, and Shift JIS. If other codes are included in HP-GL data, unwanted characters might be output.

Font specification and selection

As with other HP-GL/2 products, procedures for font selection at HP-GL/2 filter are based on SD and AD command parameters.

Parameters that can be used with SD and AD commands

The standard and substitute character sets (SD and AD commands respectively) define each character set's attributes, such as font, font spacing, pitch height, and character width. The table below shows which of the attributes shown in the HPGL/2 manual can be used with HP-GL/2.

Types and attributes		Default value	Description
1	Character set	277	Roman8
2	Font spacing	0	Fixed spacing
3	Pitch	Depends on paper size	Characters per inch
4	Height	Depends on paper size	Font point
5	Character tilt	0	Upright
6	Line width	0	Normal
7	Font	3	Courier

Character Set

Character set attributes define the character sets used as the standard and substitute character set. The table below shows the character sets that the HPGL/2 filter can use. If an unusable character set is specified, the default set is applied.

Character set	Description	Note
0 and 277	Roman8	
11	JIS ASCII	
22	Arabic	
43	Katakana	If you select this font, the display might not be as intended, depending on the area you want to use.
101	Shift JIS	
278	Arabic-8	
300	Ventura ITC Zapf Dingbats	
332	PS ITC Zapf Dingbats	
364	ITC Zapf Dingbats 100	
396	ITC Zapf Dingbats 200	
428	ITC Zapf Dingbats 300	

Character set	Description	Note
531	HP-GL Download	
numbers higher than 1000	Kanji code	If you select this font, the display might not be as intended, depending on the area you want to use.

Font

The font attribute selects the font that determines the rendering style. The table below shows the character sets that the HP-GL/2 filter can use. If an unusable font is specified, the default font is applied.

Font	Selection condition	Note
Courie	The character set is 0, 277 or the font is 3	
Symbol	The character set is 22, 278	
Zaps Dingbats	The character set is 300, 332, 364, 396, 428	
User font	The character set is 531	Fonts downloaded using the DL command.
Mincho / Gothic	The character set is 101, 43, 1000 or a higher number; or the font is 81, 152, 153, 154, 155, 156	Conditions of usage by Mincho / Gothic depends upon the command parameter.
Stick font	The font is 48, 49, 50	
Helvetica	The font is 4	
Times Roman	The font is 5 and the line width is other than 3, 7	
Times Bold	The font is 5 and the line width is 3 or 7	
Times Italic	The font is 5, the tilt is 1, and the line width is other than 3, 7	

Font	Selection condition	Note
Times Bold Italic	The font is 5, the tilt is 1, and the line width is 3, 7	
Palatino-Roman	The font is 15 and the line width is other than 3, 7	
Palatino-Bold	The font is 5 and the line width is 3, 7	
Palatino-Italic	The font is 15 and the tilt is 1	
Palatino-Bold-Italic	The font is 15 and the tilt is 1 and the line width is 3, 7	
NewCenturySchlBk	The font is 23 and the line width is other than 3, 7	
NewCenturySchlBk-Bold	The font is 23 and the line width is 3, 7	
NewCenturySchlBk-Italic	The font is 15, the tilt is 1, and the line width is other than 3,	
NewCenturySchlBk-Bold-Italic	The font is 23, the tilt is 1, and the line width is 3, 7	
AvantGarde-Book	The font is 31	
AvantGarde-Book-Oblique	The font is 31 and the tilt is 1	
Zapfchancery-midium-italic	The font is 43	
Bookman-Light	The font is 47 and the line width is other than 3, 7	
Bookman-DemiLight	The font is 47 and the line width is 3, 7	
Bookman-LightItalic	The font is 47, the tilt is 1, and the line width is other than 3, 7	
Bookman-Demitalic	The font is 47, the tilt is 1, and the line width is 3, 7	

HP-RTL Specifications

This section explains limitations to commands that are explained in the HPGL/2 and HP-RTL reference manuals.

Logical Operation (ESC*|#o)

The table below shows the specifications of the parameters used by the HPGL/2 filter's Logical Operation command.

Parameter	Specification
252 (Default)	OVERWRITE procedure
136	AND procedure
168	TRANSPARENT procedure
204	TRANSPARENT procedure
238	OR procedure
Values other than the above	TRANSPARENT procedure

Printable TIFF Files

TIFF Data Specifications

TIFF files that can be processed

This section explains the TIFF filter's file processing limitations. The TIFF filter can process only TIFF files that are compliant with "TIFF Revision 6.0" (Adobe Developers Association, June 1992).

Note

- The TIFF filter might be able to process non-compliant TIFF files, but the output is likely to be incorrect, depending on the size of the image.

TIFF header

TIFF data requires the header values shown in the table below.

Field	Values
Byte order	0x4d4d or 0x4949
Version number	42

TIFF directory

If the data is multi-page TIFF:

- Both the directory and data must be divided by page.
- The last four bytes of each directory must contain a pointer to the subsequent page, and the pointer value must increase in keeping with the page order.

Note

- The pointer value for both single page TIFF data and the last page of multipage TIFF data must be "0x00000000".
- The page order must be the same as the intended output order.

TIFF tags

The table below shows the types and values of tags that can be included in the TIFF directory. If included, other tags or unacceptable values are normally ignored, but might occasionally cause processing to stop.

Tag name (number)	Value
ImageWidth (256)	0 - 65535
ImageHeight (257)	0 - 65535
BitsPerSample (258)	1, 4, or 8
Compression (259)	1, 3, or 4
PhotometricInterpretation (262)	0
FillOrder (266)	1
StripOffsets (273)	0 - $2^{32} - 1$
SamplesPerPixel (277)	1
RowsPerStrip (278)	1 - ImageLength
StripByteCounts (279)	One of the following: $\text{ImageWidth} \times \text{ImageLength} / 8$ $\text{ImageWidth} \times \text{ImageLength} / 2$ $\text{ImageWidth} \times \text{ImageLength}$ size of compressed image in bytes
MinSampleValue (280)	0
MaxSampleValue (281)	$2^{\text{BitsPerSample}} - 1$
XResolution (282)	50 - 1200
YResolution (283)	50 - 1200
T4Options (292)	0 or 1
ResolutionUnit (296)	2

Tag values must be entered in byte, ASCII, short, long, or rational data format.

If the value of the tag is a pointer to data that is stored outside the tag entry, that pointer must be at the back of the directory that contains the tag, pointing either to the subsequent directory or the data domain preceding the end of the data, not to the data domain of the subsequent page.

Bitmap images

For reference, the top position of the strip data must be contained in the value of the `StripeOffsets` (273) tag. The data size (byte) after it is coded must also be specified by the value of `StripeByteCounts` (279) tag.

The byte at the end of the last page's strip data must be the same as the byte at the end of the TIFF data.

The bitmap data must be one of the following types:

Bitmap image type	Limitations
Monochrome: one sample, one bit (two colors) per pixel.	The value of the <code>BitsPerSample</code> (256) tag must be set to 1. Each pixel must be white when the sample value is 0, and black when the sample value is 1.
Gray scale: one sample, four bit (16 colors) per pixel.	The value of the <code>BitsPerSample</code> (256) tag must be set to be at 4. Each pixel must be white when the sample value is 0, and black when the sample value is 15.
Gray scale: one sample, eight bit (256 colors) per pixel.	The value of the <code>BitsPerSample</code> (256) tag must be set to be at 8. Each pixel must be white when the sample value is 0, and black when the sample value is 255.

The bitmap image data must be coded using one of the following compression methods.

Compression method	Limitations	Notes
Uncompressed method	<p>The image is not compressed.</p> <p>Data for each pixel is stored in the order it is created or scanned. Extra data is added to the end of each line as a pad in place of unused bytes.</p> <p>The value of the Compression (259) tag must be set to 1 and the T4Options (292) tag cannot be included. Also, the value of the StripByteCounts (279) tag must be set as follows:</p> <ul style="list-style-type: none">• 2 color monochrome image $\text{ImageWidth} \times \text{ImageLength} / 8$• 16 color gray scale image $\text{ImageWidth} \times \text{ImageLength} / 2$• 256 color gray scale image $\text{ImageWidth} \times \text{ImageLength}$	
MH (Modified Huffman) method	<p>This compression method is the same as the one-dimensional coding method of the CCITT Group 3 Fax.</p> <p>This compression method is used for two color monochrome images only.</p> <p>The value of the Compression (259) must be set to 3 and the T4Options (292) tag must be set to 1. Also, the value of the StripByteCounts (279) tag must be set to the size (inbytes) of the compressed data.</p>	

Compression method	Limitations	Notes
MMR (Modified Modified Read) method	<p>This compression method is the same as the CCITT Group 4 Fax coding method.</p> <p>This compression is used for two color monochrome images only.</p> <p>The value of the Compression (259) tag must be set to 4 and the T4Options (292) tag cannot be included. Also, the value of the StripByteCounts (279) tag must be set to the size (in bytes) of the compressed data.</p>	
LZW (Lempel, Ziv, Welch) method	<p>The value of the Compression (259) tag must be set to 5. Also, the value of the StripByteCounts (279) tag must be set to the size (in bytes) of the compressed data.</p>	<p>This method uses the data compression algorithm originally devised by Terry Welch of Sperry (currently Unisys), and later used as a dictionary "LZ77" algorithm by Abraham Lempel and Jacob Ziv.</p>

Printable CALS Files

CALS Data Specifications

CALS files that can be processed

The TIFF filter can process only CALS files that are "CALS Raster (Type1)" compatible and compliant with the following file format and raster drawing method: "MIL-STD-1840A" (US Department of Defense, December 1987)

4

⬇

Note

- The TIFF filter might be able to process non-compliant CALS files, but the output is likely to be incorrect, depending on the size of the image.

CALS headers

CALS data must include a header block that is compliant with the conditions listed after the table below. The header block requires the following eleven header records to be entered at the top in the order shown.

Byte offset	Record ID and configurable value (all ASCII characters)
0000	srcdocid: optional
0128 (0x80)	dstdocid: optional
0258 (0x102)	txtfilid: optional
0348 (0x15C)	Figid: optional
0512 (0x200)	srcgph: optional
0640 (0x280)	doccls: optional
0768 (0x300)	Rtype: 1
0896 (0x380)	rorient: 000, 270
1024 (0x400)	rpelcnt: appropriate value
1152 (0x480)	rdensty: appropriate value
1280 (0x500)	notes: optional

Byte offset	Record ID and configurable value (all ASCII characters)
1408 (0x580)	0x20 × 128 bytes
1530 (0x5FA)	0x20 × 128 bytes
1664 (0x680)	0x20 × 128 bytes
1792 (0x700)	0x20 × 128 bytes
1920 (0x780)	0x20 × 128 bytes
2048 (0x800)	Bitmap data

Header Block Conditions

- The header must be 2048 bytes (fixed length).
- Header records must be 128 bytes (fixed length).
- Header records must start with a record ID.
- Specified values for header record IDs must be entered in the separator's two character spaces: Colon (0x3a) and Space (0x20).
- Header records that contain no directive value must be given "NONE" as their value.
- Empty bytes in the header record and header block must be padded with spaces (0x20).

Bitmap image data

Bitmap image data must follow immediately after the header block's final byte and be of the following format:

ITU-T T.6 monochrome raster (Group 4 Fax).



Note

- The same compression format as MMR (Modified Modified Read).

5. Saving and Printing Using the Document Server

This chapter explains how to use the Document Server function.

Accessing the Document Server

The Document Server enables you to store documents on the machine's hard disk, and allows you to edit and print them as necessary.

★ Important

- Applications with their own drivers, such as PageMaker, do not support this function.

↓ Note


- When you use the Document Server, the following functions can be selected using the machine's control panel:
 - Copies
 - Collate
 - Paper selection: Paper source tray, paper type, paper output tray.
- The above items are dimmed, so you cannot set them from the printer properties dialog box when the Document Server is selected.
- You must enter a user ID, using up to eight alphanumeric characters.
- You should enter a Password and File Name to distinguish the job from others.
- Up to 3,000 files can be stored in the Document Server. New files cannot be stored when 3,000 files have already stored. Even if less than 3,000 files are stored, new files cannot be stored when
 - a file to be stored contains more than 1,000 pages,
 - the machine's sent or stored files total over 3,000 pages. (The total varies depending on the size of the files.)
 - the hard disk is full.
- The Document Server also stores files scanned using the original table. You should delete unnecessary stored files once in a while so as not to exceed the capacity of the hard disk. For details about deleting stored files, see General Settings Guide.
- When using the hard disk for functions other than those of Document Server, you may not be able to store new files in the Document Server, even if there are less than 3,000 files stored.
- For details about Document Server functions, see "Document Server", General Settings Guide.
- For details about how to access Document Server from a client, see the printer driver Help.

6. Appendix

This chapter lists the printer's specifications and the functions that are available on the Printer Features screen.

Specifications

This section contains the machine's electrical and hardware specifications, including information about its options.

Component	Specifications
Resolution	600 × 600 dpi
Printing speed	Type 1: <ul style="list-style-type: none">• 14 ppm Type 2: <ul style="list-style-type: none">• 10 ppm (A1 (D)  , plain paper) Printing speeds depend on the machine. Check which type of machine you have. See General Settings Guide.
Interface	Standard: <ul style="list-style-type: none">• Ethernet interface (100BASE-TX / 10BASE-T)• USB 2.0 interface Option: <ul style="list-style-type: none">• Giga Ethernet interface (1000BASE-T / 100BASE-TX / 10BASE-T)• IEEE 1284 parallel interface• IEEE 802.11 a/b/g wireless LAN interface
Network protocol	IPv4, IPv6, IPX/SPX, AppleTalk
Printer language	RPCS, PostScript 3, PDF, GL/2 & TIFF Filter ^{*1}
Fonts	PostScript 3: 136 fonts (Type 2:24, Type 14:112)
Memory	1 GB
Hard disk	Storage capacity: 320 GB

Component	Specifications
USB Interface (Standard)	<ul style="list-style-type: none">Supported Operating System: Windows 2000 / XP / Vista, Windows Server 2003 / 2003 R2, MacOS 10.3.3 or laterTransmission spec. USB 2.0 StandardConnectable Device: Devices corresponding to USB 2.0 Standard

* 1 This machine can print HP-GL, HP-GL/2, and TIFF files.

 **Note**

- When using Mac OS, use only the standard USB Interface. The optional USB interface board is not supported.
- When using the USB Interface (Standard) with Mac OS 10.3.3, USB2.0 is supported.

Printer Features Menu

The following explains settings and meanings of functions on the Printer Features screen. Select [Printer Features] after you press the [User Tools/Counter] key. For details, see "Printer Features", General Settings Guide.

List / Test Print

Menu	Description
Multiple Lists	You can print the configuration page and error log.
Configuration Page	You can print the machine's current configuration values.
Error Log	You can print error logs listing all errors that occurred during printing.
Menu List	You can print a Menu List showing the machine's function menus.
PS Configuration / Font Page	You can print the current PS configuration and installed PostScript font list. This menu can be selected only when the optional PostScript 3 unit is installed.
PDF Configuration / Font Page	You can print the current PDF configuration and installed PDF font list. This menu can be selected only when the optional PostScript 3 unit is installed.
Hex Dump	You can print in the Hex Dump mode.

6

Maintenance

Menu	Description
Menu Protect	This function lets you protect menu settings from accidental change. It makes impossible to change menu settings with normal procedures unless you perform the required key operations. In a network environment, only administrators can make changes to menu settings.
List / Test Print Lock	You can lock the [List / Test Print] menu.

Menu	Description
Delete All Temporary Print Jobs	You can delete all print jobs temporarily stored in the machine.
Delete All Stored Print Jobs	You can delete all print jobs stored in the machine.

System

Menu	Description
Print Error Report	You can print an error report when a printer or memory error occurs.
Auto Continue	You can select this to enable Auto Continue. When it is On, printing continues after a system error occurs.
Memory Overflow	Select this to have a memory overflow error report printed.
Rotate by 180 Degrees	Specify whether to rotate the print image 180 degrees relative to the paper orientation.
Auto Delete Temporary Print Jobs	You can select to automatically delete print jobs temporarily stored in the machine.
Auto Delete Stored Print Jobs	You can select to automatically delete print jobs stored in the machine.
Initial Print Job List	You can set the default Printer screen when you press [Print Jobs].
Memory Usage	You can select the amount of memory used in Font Priority or Frame Priority, according to paper size or resolution.
Copies	You can specify the number of print sets. This setting is disabled if the number of pages to print has been specified with the printer driver or another command.
Blank Page Print	You can select whether or not to print blank pages.
Reserved Job Waiting Time	You can specify how long the machine waits to receive a print job before allowing other functions such as the copier and scanner functions to interrupt it.
Printer Language	You can specify the printer language.

Menu	Description
Sub Paper Size	You can enable the Auto Substitute Paper Size (A4↔LT) feature.
Bypass Tray Setting Priority	You can specify which of the two options, (Printer) Driver / Command or Machine Settings, has priority for determining the paper size for the bypass tray.
Edge to Edge Print	You can select whether or not to print on the entire sheet.
Default Printer Language	You can set the default printer language if the machine cannot find the printer language automatically.
Tray Switching	You can set to switch the paper tray.

Host Interface

Menu	Description
I/O Buffer	You can set the size of the I/O Buffer. Normally it is not necessary to change this setting.
I/O Timeout	You can set how many seconds the machine should wait before ending a print job. If data from another port usually arrives in the middle of a print job, you should increase this timeout period.

6

PS Menu (optional)

Menu	Description
Data Format	You can select a data format.
Resolution	You can set the print resolution in dots per inch.

PDF Menu (optional)

Menu	Description
Change PDF Password	You can set the password for the PDF file executing PDF Direct Print.
PDF Group Password	You can set the group password already specified with DeskTopBinder Lite.

Menu	Description
Resolution	You can set the print resolution in dots per inch.

 **Note**

- Some options do not appear depending on optional units or selected printer languages in use.
- Some options cannot be set depending on security settings.
- For details, see "Printer Features", General Settings Guide.
- For details about "Copier Features" and "System Settings", see Copy/Document Server Reference and General Settings Guide.

INDEX

A

About This Machine.....	1
Adjusting the print settings.....	102

B

Bidirectional Communication.....	48, 49
Bypass tray.....	16
film.....	20
Setting Custom Size Paper.....	19
Setting the Paper Size.....	17
translucent.....	20

C

CALS data specifications.....	128
Canceling a job.....	85
Canceling a Print Job	
using the computer.....	85
using the control panel.....	85
Checking jobs in the print queue.....	15
Collate.....	93
Command.....	112
Confirming the Connection Method.....	23
Local Connection.....	25
Network Connection.....	23
Control panel.....	135
Copy/Document Server Reference.....	1

D

DeskTopBinder Lite.....	57
Enhancements.....	58
Function Palette.....	58
Install.....	57
Password-Protected.....	59
Display Panel.....	8
Document Server.....	131
Downloading the Printer Driver.....	26

E

Error log.....	87
----------------	----

F

Fold types.....	91
Folding finisher.....	90
Folding finisher cautions.....	91

G

General settings.....	103
General Settings Guide.....	1
GL/2.....	95
GL/2 & TIFF Filter.....	102
GL/2 and TIFF Filter.....	95
GL/2 print settings.....	105

H

HDI driver.....	108
HDI driver for AutoCAD.....	108
HDI driver help.....	110
Hold Print.....	73
deleting.....	76
printing.....	74
How to Read This Manual.....	6
HP-GL specifications.....	112
HP-GL/2 specifications.....	117
HP-RTL specifications.....	122

I

Information.....	1
Initial Display.....	8
Initial Print Job List.....	65
Installing the HDI Driver.....	109
Installing the Printer Driver.....	26
IPP.....	31
LPR port.....	34
NetWare Print Server / Remote Printer.....	39
Parallel Connection.....	46
Quick Install.....	26
SmartDeviceMonitor for Client Port.....	27
Standard TCP/IP port.....	32
TCP/IP.....	29
Windows Network Printer.....	37
WSD port.....	35
Installing the Printer Driver Using USB.....	42
Windows 2000.....	42
Windows Vista.....	44
Windows XP, Windows Server 2003 / 2003 R2.....	43

J

Job List.....	11, 15
Change Order.....	13
Checking Jobs.....	12

Deleting Jobs.....	14	printing.....	67
Holding Jobs.....	13	Scanner Reference.....	1
Job History.....	14	Security Reference.....	1
Job List Screen.....	11	Setup CD-ROM.....	108
L		Simplified Display.....	9
List Per User ID.....	81	Specifications.....	123, 133
printing all print jobs.....	82	Spool printing.....	89
printing the desired print job.....	81	Stored Print.....	76
Locked Print.....	70	deleting.....	79
deleting.....	73	printing.....	77
printing.....	71	T	
M		TIFF.....	95
Making Option Settings for the Printer.....	48	TIFF print settings.....	107
Manuals for This Machine.....	1	To print.....	96
N		Trouble Shooting.....	1
Network Guide.....	1	U	
O		UNIX Supplement.....	1
Other manuals.....	1	Using web printing tool.....	96
P		W	
PageMaker.....	50	Web printing tool.....	96
PDF Direct Print.....	57, 59	basic operations.....	99
PDF direct print properties.....	60	password authentication.....	99
using commands.....	61		
PostScript 3 Supplement.....	1		
Print Job Function.....	62		
Print settings.....	102		
Printable CALS files.....	128		
Printable files.....	95		
Printable GL/2 files.....	112		
Printable TIFF files.....	123		
Printer Features Menu.....	135		
Printer Properties, RPCS			
Windows 2000.....	51		
Windows Server 2003 / 2003 R2.....	53		
Windows Vista.....	54		
Windows XP.....	53		
Printer Reference.....	1		
Printing commands.....	100		
S			
Sample Print.....	67		
deleting.....	69		

Trademarks

Microsoft®, Windows®, Windows Server®, Windows Vista®, and Internet Explorer® are either registered trademarks or trademarks of Microsoft Corporation in the United States and/or other countries.

Adobe, Acrobat, PageMaker, PostScript are either registered trademarks or trademarks of Adobe Systems Incorporated in the United States and/or other countries.

Apple, AppleTalk, Macintosh, and Mac OS are registered trademarks of Apple Inc, registered in the United States and other countries.

UNIX is a registered trademark of The Open Group.

Netware, IPX, IPX/SPX are either registered trademarks or trademarks of Novell, Inc.

Oracle and Java are registered trademarks of Oracle and/or its affiliates.

Other product names used herein are for identification purposes only and might be trademarks of their respective companies. We disclaim any and all rights to those marks.

The proper names of Internet Explorer 5.01 and 6 are as follows:

- * Microsoft® Internet Explorer® 5.01
- * Microsoft® Internet Explorer® 6

The proper names of the Windows operating systems are as follows:

- * The product names of Windows 2000 are as follows:
 - Microsoft® Windows® 2000 Professional
 - Microsoft® Windows® 2000 Server
 - Microsoft® Windows® 2000 Advanced Server
- * The product names of Windows XP are as follows:
 - Microsoft® Windows® XP Professional
 - Microsoft® Windows® XP Home Edition
 - Microsoft® Windows® XP Media Center Edition
 - Microsoft® Windows® XP Tablet PC Edition
- * The product names of Windows Vista are as follows:
 - Microsoft® Windows Vista® Ultimate
 - Microsoft® Windows Vista® Business
 - Microsoft® Windows Vista® Home Premium
 - Microsoft® Windows Vista® Home Basic
 - Microsoft® Windows Vista® Enterprise
- * The product names of Windows Server 2003 are as follows:
 - Microsoft® Windows Server® 2003 Standard Edition
 - Microsoft® Windows Server® 2003 Enterprise Edition
 - Microsoft® Windows Server® 2003 Web Edition
 - Microsoft® Windows Server® 2003 Datacenter Edition
- * The product names of Windows Server 2003 R2 are as follows:
 - Microsoft® Windows Server® 2003 R2 Standard Edition
 - Microsoft® Windows Server® 2003 R2 Enterprise Edition
 - Microsoft® Windows Server® 2003 R2 Datacenter Edition

