

Fiery Extended Applications Package 4.4 Supplement

2017/7/21

This document describes the below software functions supplied with Fiery Extended Applications Package 4.4.

1. Fiery Software Manager
2. Fiery JobFlow
3. Fiery Dashboard/Fiery Navigator
4. Fiery Navigator Client

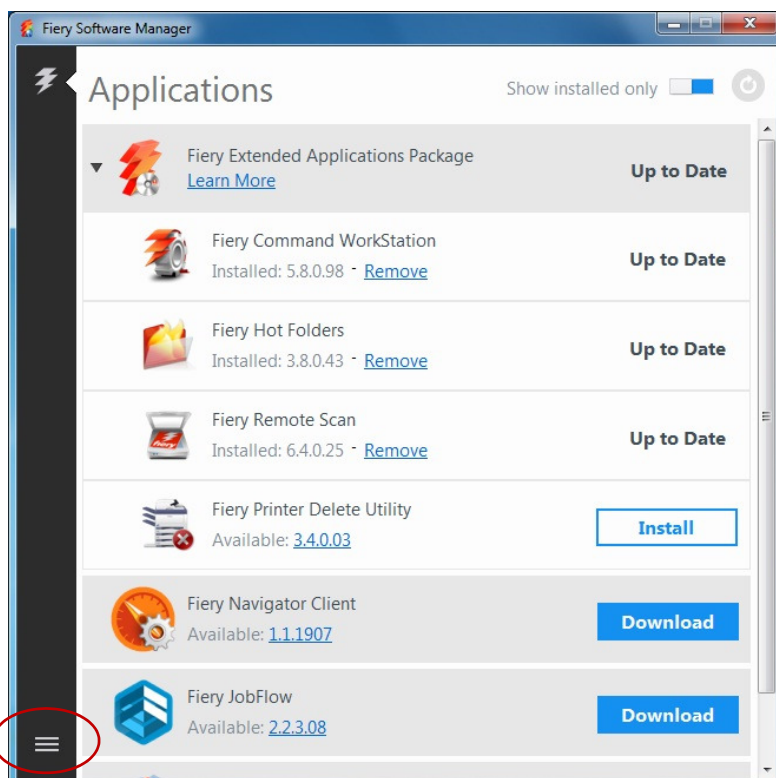
1. Fiery Software Manager

With the introduction of Fiery Software Manager (FSM), EFI has simplified the way to download and install the latest updates of Fiery Extended Applications, such as Fiery Command Workstation, Fiery HotFolders, etc.

Automatically updating software on a server in a production environment may be undesirable and can be prevented by disabling automatic updates in FSM.

This is easily done by following the steps outlined below.

Click on the  -icon on the taskbar. The Software Manager will open.



The **Preferences** icon is located in the lower left corner. By unchecking all options in the **Preferences** menu, all offered features will be disabled.



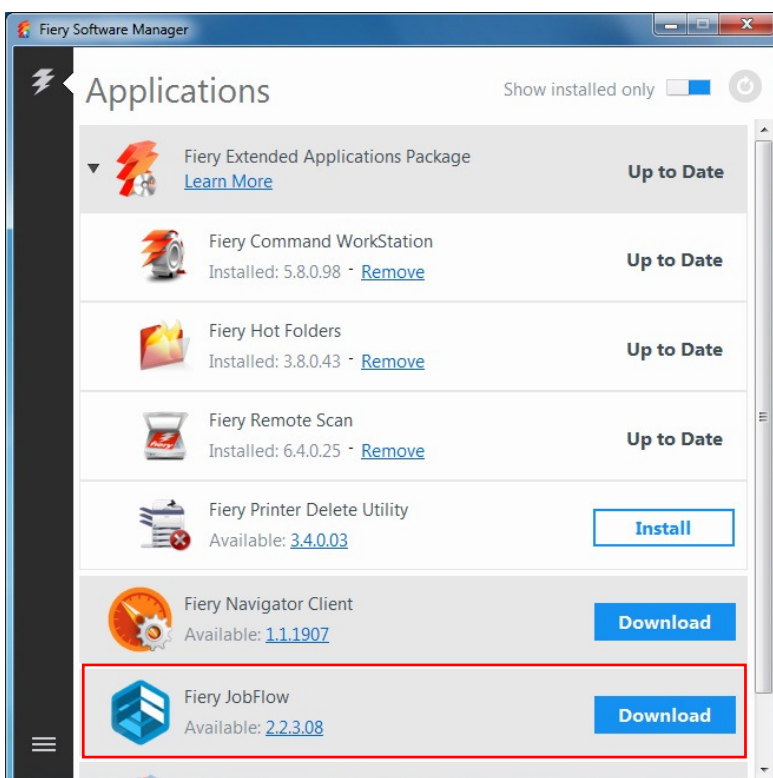
Finally, close Fiery Software Manager, right click once more on the ⚡-icon in the taskbar and select **Exit**, to stop the application from running.

To check for new updates to Fiery Extended Applications, simply launch FSM from the start menu, or click "Check for updates" from the Help menu in Command Workstation.

2. Fiery JobFlow

Downloaded and installed from Fiery Software Manager to use, Fiery JobFlow is a tool to automate each step of the print process workflow.

For more information regarding this tool, contact Electronics for Imaging Inc. (EFI) directly.



3. Fiery Dashboard/Fiery Navigator

Fiery Dashboard/Fiery Navigator are EFI's cloud-based service through Command WorkStation to monitor production.

For more information about this service, contact EFI directly.

4. Fiery Navigator Client

Fiery Navigator Client is a tool for using Fiery Navigator.

For more information about this tool, contact EFI directly.

