

Model: Model PG-C1		Date: 14-Jun-06	No.: MB229001
Modified Article: Parts catalog correction: Engine Unit		Prepared by: A. Ishiyama	
From: 1st Technical Support Sec. Service Support Dept.			
Reason for Modification:	<input checked="" type="checkbox"/> Parts catalog correction <input type="checkbox"/> To facilitate assembly <input type="checkbox"/> Part standardization	<input type="checkbox"/> Vendor change <input type="checkbox"/> To improve reliability <input type="checkbox"/> Other	<input type="checkbox"/> To meet standards ()
Modification Schedule:	From first mass production.		

Incorrect Part Number	Correct Part Number	Description	Q'ty	Int	Page	Index	Note
B2290101		Plotter Section:GJ:C1:Rohs	1->0	O/O	29	1	
	B2290110	GJ Engine Unit w/Starter Ink	0->1				

Change/Reason: The P/N and part name in the Parts Catalog were corrected.

Note: The GJ Engine Unit w/Starter Ink (B2290110) contains these parts:

- GJ Engine Unit (B2290101) 1pc
- Small starter cartridges 4pcs

Important: Give the starter cartridges to the customer when you replace the engine unit.
This is to make up for the lost ink still inside the sub-tank of the replaced unit.

Model: Model PG-C1		Date: 14-Jun-06	No.: MB229002
Modified Article: Parts catalog correction: Waste Ink Tank		Prepared by: A. Ishiyama	
From: 1st Technical Support Sec. Service Support Dept.			
Reason for Modification:	<input checked="" type="checkbox"/> Parts catalog correction <input type="checkbox"/> To facilitate assembly <input type="checkbox"/> Part standardization	<input type="checkbox"/> Vendor change <input type="checkbox"/> To improve reliability <input type="checkbox"/> Other	<input type="checkbox"/> To meet standards ()
Modification Schedule:	From first mass production.		

Incorrect Part Number	Correct Part Number	Description	Q'ty	Int	Page	Index	Note
B2292185	B2290643	Waste Ink Tank	1→1	O/O	43	21	

Change/Reason: The P/N in the Parts Catalog was corrected.

Note: The new Waste Ink Tank (B2290643) contains these parts:

- Waste Ink tank 1pc
- Shield cap 1pcs
- Plastic bag with zipper 1pcs

Reissued:22-Sep-06

Model:PG-C1	Date: 14-Sep-06	No.: MB229003a
-------------	-----------------	----------------

MB Reissue

The items in bold italics and the picture have been added.

Modified Article: Power Supply Unit		Prepared by: Y.Murata	
From: 1st Tech. Support Sec. Service Support Dept.			
Reason for Modification:	<input type="checkbox"/> Parts catalog correction <input type="checkbox"/> Vendor change <input type="checkbox"/> Other		
	<input type="checkbox"/> To facilitate assembly <input checked="" type="checkbox"/> To improve reliability <input type="checkbox"/> To meet standards		
	<input type="checkbox"/> Part standardization <input type="checkbox"/> Product Safety <input type="checkbox"/>		

For NA

Part number	Old Description	New Description	Q'ty	Int	Page	Index	Note
B2295500	Power Supply Unit	PCB-Power Supply Unit-120V	1	-	41	16	

For EU

Part number	Old Description	New Description	Q'ty	Int	Page	Index	Note
B2295501	PCB Power Supply Unit	PCB-Power Supply Unit-230V	1	-	41	16	

Change: The descriptions for the parts were changed.

Reason: To make it clear which PCB is for N.A. machines and which PCB is for E.U. machines.

Note: To distinguish between B2295500 and B2295501, check the part number printed on the PSU board (circled below).



Model: Model PG-C1		Date: 15-Nov-06	No.: MB229004
Modified Article: Special Cloth for Wiping the Printer Head		Prepared by: A. Ishiyama	
From: 1st Technical Support Sec. Service Support Dept.			
Reason for Modification:	<input type="checkbox"/> Parts catalog correction <input type="checkbox"/> To facilitate assembly <input type="checkbox"/> Part standardization	<input type="checkbox"/> Vendor change <input type="checkbox"/> To improve reliability <input checked="" type="checkbox"/> Other	<input type="checkbox"/> To meet standards ()
Modification Schedule:	This part is available in SPC.		

Old Part Number	New Part Number	Description	Q'ty	Int	Page	Index	Note
	B2299311	SPECIAL CLOTH 10PCS/BAG	0 ->1	-	-	-	

Change: The part in the table was added.

Reason: To clean the print heads if white lines or another image problem occurs that cannot be solved by manual cleaning or refreshing with the User Tool.

Note:

- There are 10 cloths/1pc.
- For details, see the Troubleshooting Guide or Service Manual ("Cleaning Procedure" in section "2. Preventive Maintenance").

Important:

- Use each cloth only once.
- Keep the remaining cloths inside the original bag, and make sure they do not get dirty.

Reissued: 25-Jun-08

Model: Pegasus-C1	Date: 8-Dec-06	No.: MB229005a
-------------------	----------------	----------------

MB Reissue
P/N B2291551 (Keytop – Dial) was not deleted (it can be ordered).

Modified Article: Operational Panel		Prepared by: Y.Yoshida	
From: 1st Tech. Support Sec. Service Support Dept.			
Reason for Modification:	<input type="checkbox"/> Parts catalog correction <input type="checkbox"/> Vendor change <input checked="" type="checkbox"/> Other		
	<input type="checkbox"/> To facilitate assembly <input type="checkbox"/> To improve reliability <input type="checkbox"/> To meet standards		
	<input type="checkbox"/> Part standardization <input type="checkbox"/> Product Safety ()		

Change: The parts in the table were deleted.

Reason: As per a request from the operation panel vendor.

Important: If one of the deleted parts needs to be replaced, replace the operation panel unit (B2291433, B2291434, B2291435).

Page 11

Part number	Description	Q'ty	Index
B2291507	Arm Cover - Left 2	1	2
B2291506	Arm Cover - Left 1	1	3
B2291516	Arm Cover - Right 2	1	4
B2291515	Arm Cover - Right 1	1	5
B2291504	Operation Panel Arm - Left	1	6
B2291505	Operation Panel Arm - Right	1	7
B2291509	Torsion Spring - Left	1	8
B2291508	Torsion Spring - Right	1	9
B2291503	Screw - M3X6	1	10
B2291451	Tapping Screw - M3X12	1	11
B2291487	PCB LCDC	1	12
B2291494	Harness - Operation Panel	2	13
B2291550	Cap - Fax	8	14
B2291497	Keytop - Fax Function	1	15
B2291553	Keytop - Copy NA	1	17
B2291554	Keytop - Copy EU	1	17
B2291519	Keytop - Mode Select	1	18
B2291518	Keytop - LCD	1	19
B2291472	Cap - LED	2	20
B2291459	Keytop - Cursor	1	21

Reissued: 25-Jun-08

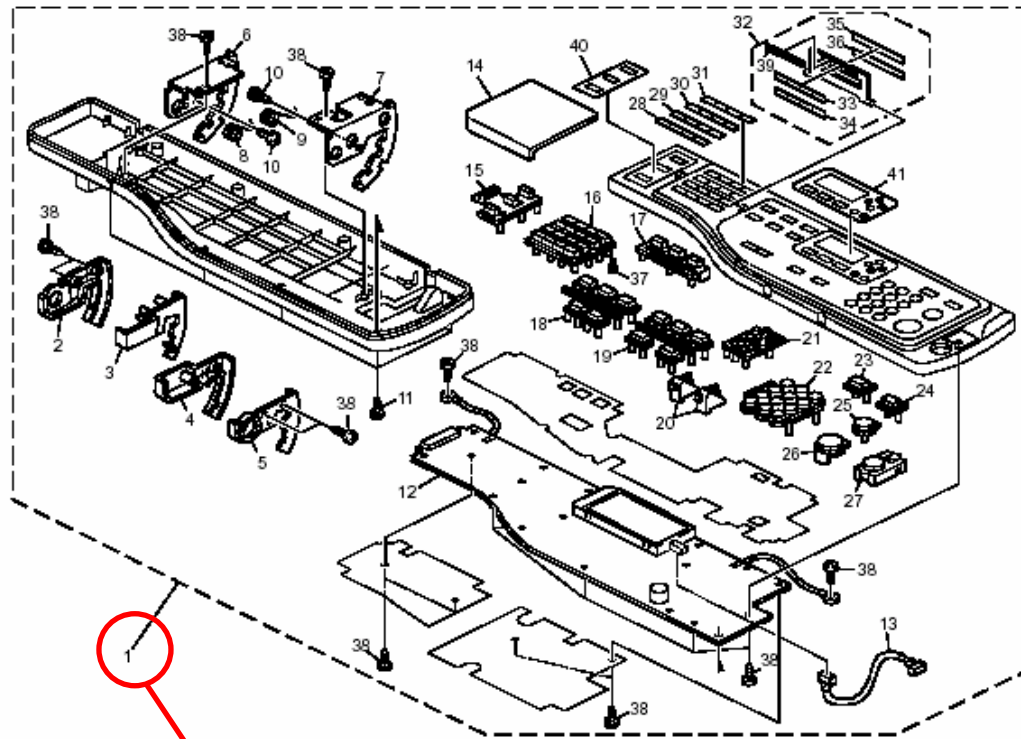
Model: Pegasus-C1		Date: 8-Dec-06	No.: MB229005a
B2291475	Keytop - 10key	1	22
B2291526	Keytop - 10key NA	1	22
B2291557	Keytop - 10key ASIA	1	22
B2291525	Keytop - initial	1	23
B2291537	Keytop - Clear Modes	1	24
B2291454	Keytop - Clear/Stop	1	25
B2291453	Keytop - Start	1	26
B2291458	Keytop - Power Source	1	27
B2291468	Decal - Dial (29-32)	1	28
B2291467	Decal - Dial (25-28)	1	29
B2291466	Decal - Dial (05-08)	1	30
B2291465	Decal - Dial (01-04)	1	31
B2291411	Door - Fax	1	32
B2291463	Decal - Dial (17-20)	1	33
B2291464	Decal - Dial (21-24)	1	34
B2291461	Decal - Dial (09-12)	1	35
B2291462	Decal - Dial (13-16)	1	36
B2291457	Pin - Door	1	37
B2291499	Tapping Screw - M3X8	19	38
B2291473	Door Bracket	1	39
B2291540	Decal - Operation Panel	1	40
B2291531	Sheet:LCD Display:NA	1	41
B2291532	Sheet:LCD Display:EU	1	41

Reissued: 25-Jun-08

Model: Pegasus-C1

Date: 8-Dec-06

No.: MB229005a

3. OPERATION PANEL (B229)

Only #1 is available

Model:PG-C1(FAX Option)		Date: 8-Dec-06	No.: MB229006
Modified Article: Operation Panel - FAX		Prepared by: Y.Murata	
From: 1st Tech. Support Sec. Service Support Dept.			
Reason for Modification:	<input checked="" type="checkbox"/> Parts catalog correction <input type="checkbox"/> To facilitate assembly <input type="checkbox"/> Part standardization	<input type="checkbox"/> Vendor change <input type="checkbox"/> To improve reliability <input type="checkbox"/> Product Safety	<input type="checkbox"/> Other <input type="checkbox"/> To meet standards ()

Page 3

Old part number	New part number	Description	Q'ty	Int	Index
B2291421	B2671411	Operation Panel – Fax NA	1	X/O	9
B2291422	B2671412	Operation Panel – Fax EU	1	X/O	9

Change: A Mylar was added to the operation panel.

Reason: To further protect the PCB at replacement.

Page 3

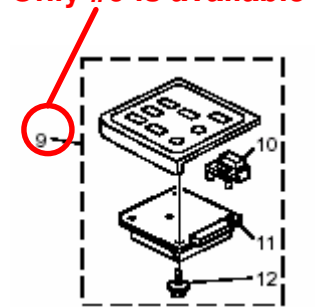
Part number	Description	Q'ty	Index
B2291529	Keytop - Fax NA	1	10
B2291530	Keytop - Fax EU	1	10
B2291490	PCB Operation Panel - Fax	1	11
B2291499	Tapping Screw M3x8	1	12

Change: The parts were deleted.

Reason: As per a request from the operation panel vendor.

Important: If one of the deleted parts needs to be replaced, replace the operation panel unit (B2291421, B2291422).

Only #9 is available



Reissued: 13-Apr-07

Model: Pegasus-C1	Date: 30-Mar-07	No.: MB229007a
-------------------	-----------------	----------------

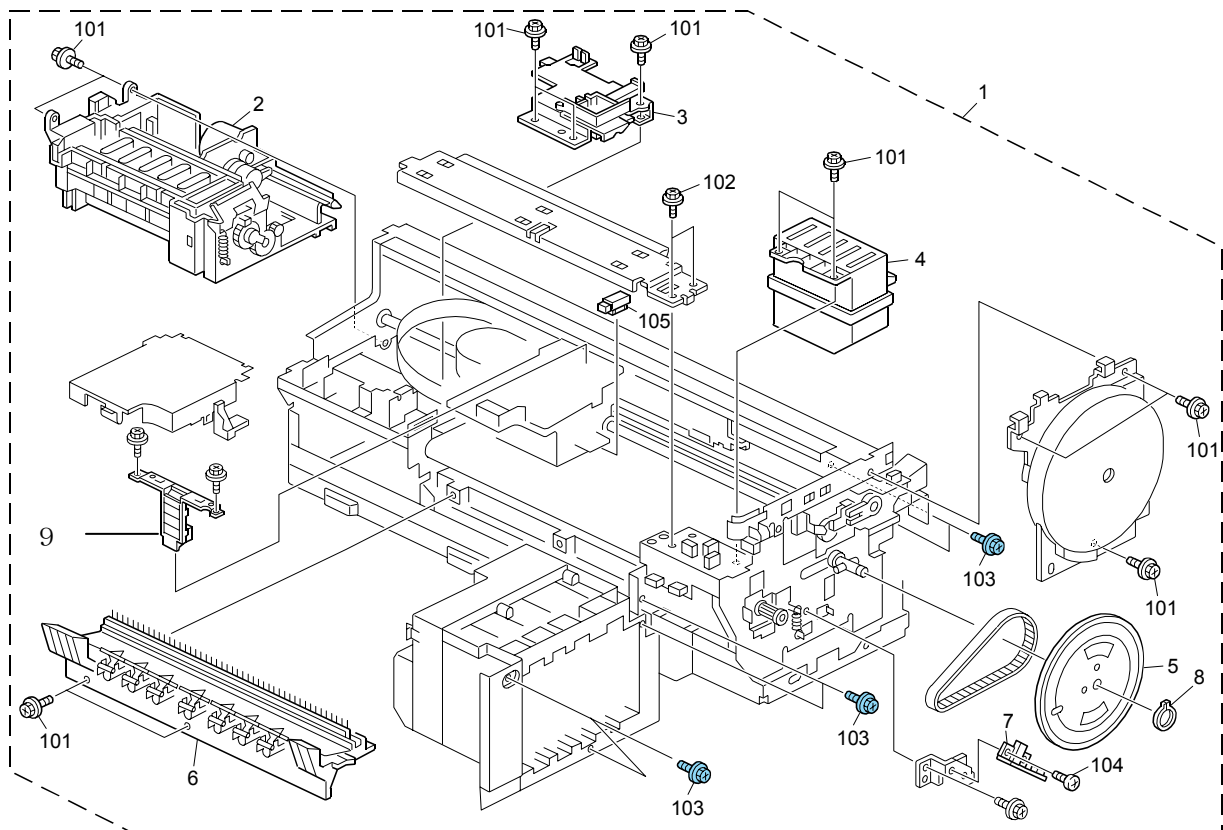
MB Correction

The illustration has added as shown below.

Modified Article: Encoder Sensor - Main Scan	Prepared by: K. Moriizumi
From: 1st Tech. Support Sec. Service Support Dept.	
Reason for Modification:	<input checked="" type="checkbox"/> Parts catalog correction <input type="checkbox"/> Vendor change <input type="checkbox"/> Other <input type="checkbox"/> To facilitate assembly <input type="checkbox"/> To improve reliability <input type="checkbox"/> To meet standards <input type="checkbox"/> Part standardization <input type="checkbox"/> Product Safety ()

Old part number	New part number	Description	Q'ty	Int	Page	Index	Note
-	B2292426	Encoder Sensor	1		29	9	

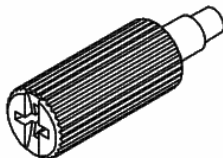



Change/Reason: Parts Catalog correction



Model: Model PG-C1		Date: 29-Nov-07	No.: MB229008
Modified Article: P/C Correction: Function Upgrade Kit		Prepared by: A. Ishiyama	
From: 1st Technical Support Sec. Service Support Dept.			
Reason for Modification:	<input checked="" type="checkbox"/> Parts catalog correction <input type="checkbox"/> To facilitate assembly <input type="checkbox"/> Part standardization	<input type="checkbox"/> Vendor change <input type="checkbox"/> To improve reliability <input type="checkbox"/> Other	<input type="checkbox"/> To meet standards ()
Modification Schedule:	From first mass production.		

Old Part Number	New Part Number	Description	Q'ty	Int	Page	Index	Note
-	G1045139	KNOB SCREW:HDD UNIT	0→1	-	--	--	
	11050511	HARNESS CLAMP - LWS-0306ZC	0→1	-	--	--	
	11050625	CLAMP:EMT-6N	0→1	-	--	--	
	11050643	CLAMP - RFC-14V0	0→1	-	--	--	

Change/Reason: The above parts were missing from the Parts Catalog.

G1045139	11050511	11050625	11050643
			

Note: The G1045139 knob screw is used to attach the HDD assembly to the machine.

Model: Pegasus-C1		Date: 29-Jan-08	No.: MB229009
Modified Article: Contoller board		Prepared by: K. Moriizumi	
From: 1st Tech. Support Sec. Service Support Dept.			
Reason for Modification:	<input type="checkbox"/> Parts catalog correction <input checked="" type="checkbox"/> Vendor change <input type="checkbox"/> Other <input type="checkbox"/> To facilitate assembly <input type="checkbox"/> To improve reliability <input type="checkbox"/> To meet standards <input type="checkbox"/> Part standardization <input type="checkbox"/> Product Safety ()		

Old part number	New part number	Description	Q'ty	Int	Page	Index	Note
B2295531	B2295532	PCB: CTL: P-C1	1-1	O/O	39	6	
G3325720	G3325740	PCB:SDRAM-DIMM:256MB	1-1	O/O	39	5	
G3325730	G3325750	PCB:SDRAM-DIMM:256MB:CHN	1-1	O/O	39	5	

Change/Reason: Vender change

Model: Pegasus-C1		Date: 29-Jan-08	No.: MB229010
Modified Article: Scanner Unit		Prepared by: K. Moriizumi	
From: 1st Tech. Support Sec. Service Support Dept.			
Reason for Modification:	<input type="checkbox"/> Parts catalog correction <input type="checkbox"/> Vendor change <input type="checkbox"/> Other <input type="checkbox"/> To facilitate assembly <input type="checkbox"/> To improve reliability <input type="checkbox"/> To meet standards <input checked="" type="checkbox"/> Part standardization <input type="checkbox"/> Product Safety ()		

Old part number	New part number	Description	Q'ty	Int	Page	Index	Note
B1801816	B2381676	Carriage Unit No.1	1-1	O/O	15	10	
AC030142	AC030169	1st Mirror	1-1	O/O	15	12	

Change/Reason: Part standardization

Model: Pegasus-C1		Date: 29-Jan-08	No.: MB229011
Modified Article: Encoder Sensor - Main Scan		Prepared by: K. Moriizumi	
From: 1st Tech. Support Sec. Service Support Dept.			
Reason for Modification:	<input type="checkbox"/> Parts catalog correction <input type="checkbox"/> Vendor change <input type="checkbox"/> Other <input type="checkbox"/> To facilitate assembly <input type="checkbox"/> To improve reliability <input type="checkbox"/> To meet standards <input checked="" type="checkbox"/> Part standardization <input type="checkbox"/> Product Safety ()		

Old part number	New part number	Description	Q'ty	Int	Page	Index	Note
B2292426	D0451912	Encoder Sensor	1		29	9	

Change/Reason: Parts standardization

Model: Pegasus-C1		Date: 8-Feb-08	No.: MB229012
Modified Article: Safety Switch Bracket		Prepared by: K. Moriizumi	
From: 1st Tech. Support Sec. Service Support Dept.			
Reason for Modification:	<input type="checkbox"/> Parts catalog correction <input type="checkbox"/> Vendor change <input type="checkbox"/> Other <input checked="" type="checkbox"/> To facilitate assembly <input type="checkbox"/> To improve reliability <input type="checkbox"/> To meet standards <input type="checkbox"/> Part standardization <input type="checkbox"/> Product Safety ()		

Old part number	New part number	Description	Q'ty	Int	Page	Index	Note
B2291019	B2291020	Safety Switch Bracket	1-1	O/O	23	28	

Change: The shape of the bracket was changed.

Reason: To further ensure the harness does not touch the safety switch.

Model: Pegasus-C1		Date: 8-Feb-08	No.: MB229013
Modified Article: Scanner Cover – Right		Prepared by: K. Moriizumi	
From: 1st Tech. Support Sec. Service Support Dept.			
Reason for Modification:	<input type="checkbox"/> Parts catalog correction <input type="checkbox"/> Vendor change <input type="checkbox"/> Other <input checked="" type="checkbox"/> To facilitate assembly <input type="checkbox"/> To improve reliability <input type="checkbox"/> To meet standards <input type="checkbox"/> Part standardization <input type="checkbox"/> Product Safety ()		

Old part number	New part number	Description	Q'ty	Int	Page	Index	Note
B2291302	B2291315	Scanner Cover – Right	1-1	O/O	9	16	
B2291367	B2291383	Scanner Cover – Right EU	1-1	O/O	9	16	

Change: The position of the material mark was changed.

Reason: To facilitate assembly.

Model: Pegasus-C1		Date: 8-Feb-08	No.: MB229014
Modified Article: PSU Bracket - Lower		Prepared by: K. Moriizumi	
From: 1st Tech. Support Sec. Service Support Dept.			
Reason for Modification:	<input type="checkbox"/> Parts catalog correction <input type="checkbox"/> Vendor change <input type="checkbox"/> Other <input type="checkbox"/> To facilitate assembly <input checked="" type="checkbox"/> To improve reliability <input type="checkbox"/> To meet standards <input type="checkbox"/> Part standardization <input type="checkbox"/> Product Safety ()		

Old part number	New part number	Description	Q'ty	Int	Page	Index	Note
B2295453	B2295459	Power Supply Unit Bracket - Lower	1-1	O/O	41	21	

Change: Two screw holes were added to the bracket.

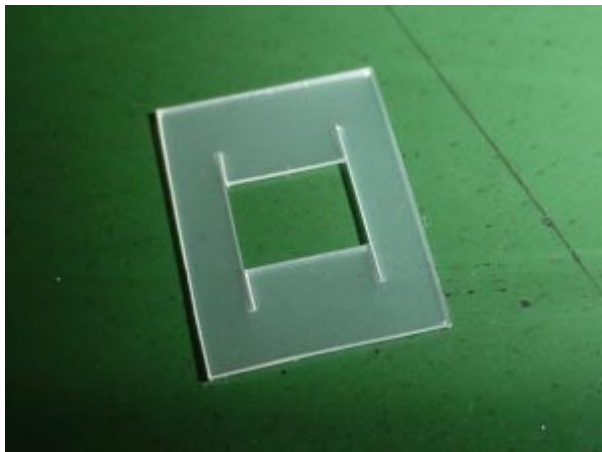
Reason: To further minimize EMI (electromagnetic interference).

Model: Pegasus-C1		Date: 8-Feb-08	No.: MB229015
Modified Article: Stopper - Side Fence		Prepared by: K. Moriizumi	
From: 1st Tech. Support Sec. Service Support Dept.			
Reason for Modification:	<input type="checkbox"/> Parts catalog correction <input type="checkbox"/> Vendor change <input type="checkbox"/> Other <input type="checkbox"/> To facilitate assembly <input checked="" type="checkbox"/> To improve reliability <input type="checkbox"/> To meet standards <input type="checkbox"/> Part standardization <input type="checkbox"/> Product Safety ()		

Old part number	New part number	Description	Q'ty	Int	Page	Index	Note
-	D0453909	Stopper: Side Fence: Manual Feed	0-2	-	19	26	

Change: Two Mylar sheets were added to the side fence racks.

Reason: To improve the mobility of the side fence.



Model: Pegasus-C1		Date: 25-Feb-08	No.: MB229016
Modified Article: Engine Unit		Prepared by: K. Moriizumi	
From: 1st Tech. Support Sec. Service Support Dept.			
Reason for Modification:	<input type="checkbox"/> Parts catalog correction <input type="checkbox"/> Vendor change <input checked="" type="checkbox"/> Other <input type="checkbox"/> To facilitate assembly <input type="checkbox"/> To improve reliability <input type="checkbox"/> To meet standards <input type="checkbox"/> Part standardization <input type="checkbox"/> Product Safety ()		

Old part number	New part number	Description	Q'ty	Int	Page	Index	Note
B2290110	B2290103	Plotter Section:GJ:C1:Roha	1 - 1	O/O	29	1	

Change: The P/N was changed.

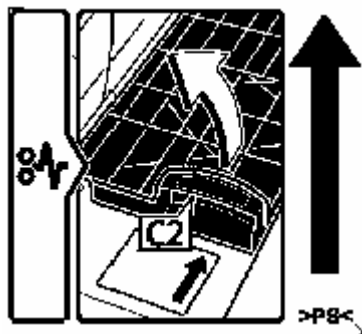
Reason: The P/N suffix has reached "z".

Model: Pegasus-C1		Date: 8-May-08	No.: MB229017
Modified Article: Decal - Inner Cover - Front		Prepared by: K. Moriizumi	
From: 1st Tech. Support Sec. Service Support Dept.			
Reason for Modification:	<input type="checkbox"/> Parts catalog correction <input type="checkbox"/> Vendor change <input checked="" type="checkbox"/> Other <input type="checkbox"/> To facilitate assembly <input type="checkbox"/> To improve reliability <input type="checkbox"/> To meet standards <input type="checkbox"/> Part standardization <input type="checkbox"/> Product Safety ()		

Old part number	New part number	Description	Q'ty	Int	Page	Index	Note
	D0454622	Decal: Inner Cover: Front	0 - 1	-	69		

Change: The decal was added to the front inner cover.

Reason: To clarify the position of the C2 cover to the user.



Model: Pegasus-C1		Date: 8-May-08	No.: MB229018
Modified Article: Bracket - Waste Ink Tank		Prepared by: K. Moriizumi	
From: 1st Tech. Support Sec. Service Support Dept.			
Reason for Modification:	<input type="checkbox"/> Parts catalog correction <input type="checkbox"/> Vendor change <input type="checkbox"/> Other <input type="checkbox"/> To facilitate assembly <input type="checkbox"/> To improve reliability <input type="checkbox"/> To meet standards <input checked="" type="checkbox"/> Part standardization <input type="checkbox"/> Product Safety ()		

Old part number	New part number	Description	Q'ty	Int	Page	Index	Note
B2292157	B2292160	Used Developer Tank Bracket 1	1 - 1	O/O	43	20	

Change/Reason: Parts standardization.

Model: Pegasus-C1		Date: 8-May-08	No.: MB229019
Modified Article: Paper Guide Plate		Prepared by: K. Moriizumi	
From: 1st Tech. Support Sec. Service Support Dept.			
Reason for Modification:	<input type="checkbox"/> Parts catalog correction <input type="checkbox"/> Vendor change <input type="checkbox"/> Other <input type="checkbox"/> To facilitate assembly <input checked="" type="checkbox"/> To improve reliability <input type="checkbox"/> To meet standards <input type="checkbox"/> Part standardization <input type="checkbox"/> Product Safety ()		

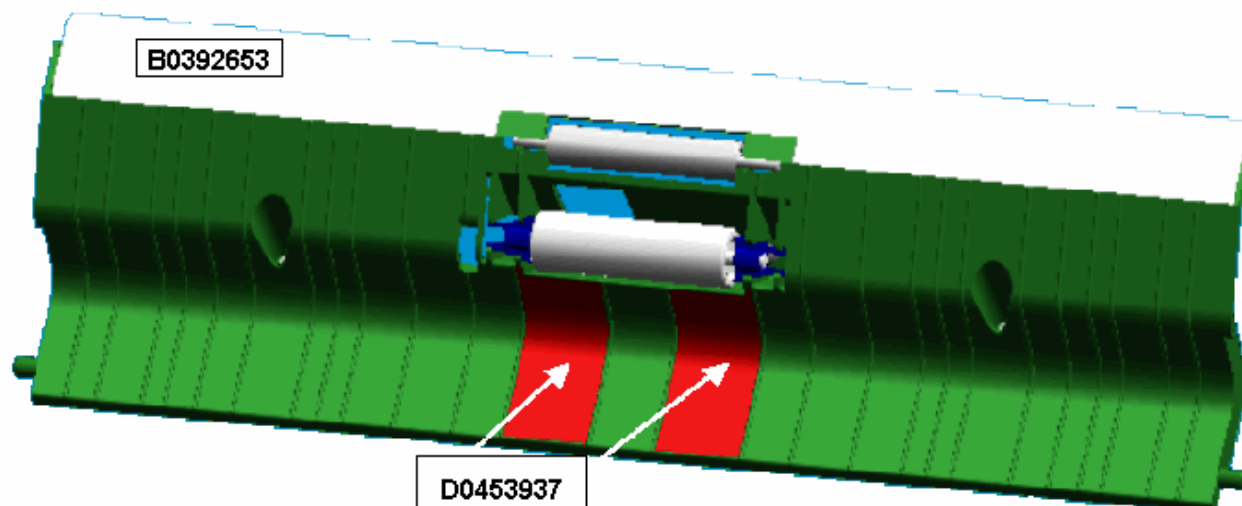
Old part number	New part number	Description	Q'ty	Int	Page	Index	Note
B2292598	D0452598	Vertical Transport Guide 3	1 - 1	X/O	21	6	A
B0392795	B0392798	Guide Plate - Transport	1 - 1	X/O	21	10	A
-	D0453937	Guide: Vertical Transport: Entrance: Up	0 - 2		25		A

Change:

- 1) The shape of the Mylar was changed.
- 2) A new Mylar was added.

Reason: To further improve paper transport.

Important: When you replace any of these parts for the first time, make sure to install all the new parts **together as a set**.



Model: Pegasus-C1		Date: 8-May-08	No.: MB229020									
Modified Article: Inner Cover		Prepared by: K. Moriizumi										
From: 1st Tech. Support Sec. Service Support Dept.												
Reason for Modification:	<table><tr><td><input type="checkbox"/> Parts catalog correction</td><td><input type="checkbox"/> Vendor change</td><td><input type="checkbox"/> Other</td></tr><tr><td><input type="checkbox"/> To facilitate assembly</td><td><input type="checkbox"/> To improve reliability</td><td><input type="checkbox"/> To meet standards</td></tr><tr><td><input checked="" type="checkbox"/> Part standardization</td><td><input type="checkbox"/> Product Safety</td><td>()</td></tr></table>			<input type="checkbox"/> Parts catalog correction	<input type="checkbox"/> Vendor change	<input type="checkbox"/> Other	<input type="checkbox"/> To facilitate assembly	<input type="checkbox"/> To improve reliability	<input type="checkbox"/> To meet standards	<input checked="" type="checkbox"/> Part standardization	<input type="checkbox"/> Product Safety	()
<input type="checkbox"/> Parts catalog correction	<input type="checkbox"/> Vendor change	<input type="checkbox"/> Other										
<input type="checkbox"/> To facilitate assembly	<input type="checkbox"/> To improve reliability	<input type="checkbox"/> To meet standards										
<input checked="" type="checkbox"/> Part standardization	<input type="checkbox"/> Product Safety	()										

Old part number	New part number	Description	Q'ty	Int	Page	Index	Note
B2291083	B2291086	Inner Cover: Frame: Right Front	1 - 1	O/O	45	11	

Change/Reason: Parts standardization.

Model: Pegasus-C1		Date: 8-May-08	No.: MB229021
Modified Article: Ground Plate - Rear		Prepared by: K. Moriizumi	
From: 1st Tech. Support Sec. Service Support Dept.			
Reason for Modification:	<input type="checkbox"/> Parts catalog correction <input type="checkbox"/> Vendor change <input type="checkbox"/> Other <input type="checkbox"/> To facilitate assembly <input type="checkbox"/> To improve reliability <input type="checkbox"/> To meet standards <input checked="" type="checkbox"/> Part standardization <input type="checkbox"/> Product Safety ()		

Old part number	New part number	Description	Q'ty	Int	Page	Index	Note
B2295457	B2295460	Ground Plate – Rear 1	1 - 1	O/O	41	25	
B2295458	B2295461	Ground Plate – Rear 2	1 - 1	O/O	41	26	

Change/Reason: Parts standardization.

Model: Pegasus-C1		Date: 8-May-08	No.: MB229022
Modified Article: Cover - Tray		Prepared by: K. Moriizumi	
From: 1st Tech. Support Sec. Service Support Dept.			
Reason for Modification:	<input type="checkbox"/> Parts catalog correction <input type="checkbox"/> Vendor change <input type="checkbox"/> Other <input type="checkbox"/> To facilitate assembly <input type="checkbox"/> To improve reliability <input type="checkbox"/> To meet standards <input checked="" type="checkbox"/> Part standardization <input type="checkbox"/> Product Safety ()		

Old part number	New part number	Description	Q'ty	Int	Page	Index	Note
B2291357	B2291384	Cover - Tray	1 - 1	O/O	9	15	
B2291378	B2291385	Cover – Tray EU	1 - 1	O/O	9	15	

Change/Reason: Parts standardization.

Model: Pegasus-C1		Date: 25-Jun-08	No.: MB229023
Modified Article: Engine Unit		Prepared by: K. Moriizumi	
From: 1st Tech. Support Sec. Service Support Dept.			
Reason for Modification:	<input type="checkbox"/> Parts catalog correction <input type="checkbox"/> Vendor change <input type="checkbox"/> Other <input type="checkbox"/> To facilitate assembly <input checked="" type="checkbox"/> To improve reliability <input type="checkbox"/> To meet standards <input type="checkbox"/> Part standardization <input type="checkbox"/> Product Safety ()		

Old part number	New part number	Description	Q'ty	Int	Page	Index	Note
B2292012	B2292013	Frame: Maintenance: Ass'y	1 - 1	O/O	29	2	

Change: The shape of this part was changed.

Reason: To strengthen the pillar of the wiper holder.

Model: Pegasus-C1		Date: 14-Jul-08	No.: MB229024
Modified Article: Engine Unit		Prepared by: K. Moriizumi	
From: 1st Tech. Support Sec. Service Support Dept.			
Reason for Modification:	<input type="checkbox"/> Parts catalog correction <input type="checkbox"/> Vendor change <input type="checkbox"/> Other <input type="checkbox"/> To facilitate assembly <input checked="" type="checkbox"/> To improve reliability <input type="checkbox"/> To meet standards <input type="checkbox"/> Part standardization <input type="checkbox"/> Product Safety ()		

Old part number	New part number	Description	Q'ty	Int	Page	Index	Note
B2290103	B2290108	Plotter Section:GJ:C1:Roha	1 - 1	O/O	29	1	
B2292013	B2292014	Frame: Maintenance: Ass'y	1 - 1	O/O	29	2	

Change: A fixing blade was added to the maintenance unit.

Reason: To improve the efficiency of head cleaning.

Model: Pegasus-C1		Date: 11-Sep-08	No.: MB229025
Modified Article: Engine Unit		Prepared by: K. Moriizumi	
From: 1st Tech. Support Sec. Service Support Dept.			
Reason for Modification:	<input type="checkbox"/> Parts catalog correction <input type="checkbox"/> Vendor change <input type="checkbox"/> Other <input type="checkbox"/> To facilitate assembly <input checked="" type="checkbox"/> To improve reliability <input type="checkbox"/> To meet standards <input type="checkbox"/> Part standardization <input type="checkbox"/> Product Safety ()		

Old part number	New part number	Description	Q'ty	Int	Page	Index	Note
B2290108	B2290113	Plotter Unit:C1	1 - 1	O/O	29	1	
B2292014	B2292016	Maintenance Unit	1 - 1	O/O	29	2	

Change:

1. Sheets were added to the maintenance unit and engine unit.
2. The stand-by position of the wiper blade was changed.

Reason:

1. To further ensure that waste ink does not scatter.
2. To ensure that ink does not impede the movement of the wiper blade.

Model: Pegasus-C1		Date: 9-Oct-08	No.: MB229026
Modified Article: Maintenance Unit		Prepared by: K. Moriizumi	
From: 1st Tech. Support Sec. Service Support Dept.			
Reason for Modification:	<input type="checkbox"/> Parts catalog correction <input type="checkbox"/> Vendor change <input type="checkbox"/> Other <input type="checkbox"/> To facilitate assembly <input checked="" type="checkbox"/> To improve reliability <input type="checkbox"/> To meet standards <input type="checkbox"/> Part standardization <input type="checkbox"/> Product Safety ()		

Old part number	New part number	Description	Q'ty	Int	Page	Index	Note
B2292016	B2292017	Maintenance Unit	1 - 1	O/O	29	2	

Change: The shape of the pillar used to shave off excess ink was changed.

Reason: To ensure that ink does not impede the movement of the pillar.

Model: Pegasus-C1		Date: 06-Feb-09	No.: MB229027
Modified Article: Photo sensor		Prepared by: K. Moriizumi	
From: 1st Tech. Support Sec. Service Support Dept.			
Reason for Modification:	<input type="checkbox"/> Parts catalog correction <input type="checkbox"/> Vendor change <input type="checkbox"/> Other <input type="checkbox"/> To facilitate assembly <input type="checkbox"/> To improve reliability <input type="checkbox"/> To meet standards <input checked="" type="checkbox"/> Part standardization <input type="checkbox"/> Product Safety ()		

Old part number	New part number	Description	Q'ty	Int	Page	Index	Note
14031301	GW010008	Photointerruptor:Sg113-rc80	1 - 1	O/O	29	105	

Change/Reason: Parts standardization.



Part Change Information List

Date: April 30, 2009

Model	Code	PCIL Number	PCIL Correction	Old part number	New part number	Description	Old Q'ty	New Q'ty	Int	3DPC	Page	Index	Set	Set Int	RTB	Note	Ref Number
Pegasus-C1	B229	200904		B2292017	B2292018	FRAME:MAINTENANCE:ASS'Y	1	1	X/O		29	2					V0804843
Pegasus-C1	B229	200904		14031301	GW010008	PHOTO REFIECTION SENSOR:SG113-RC80	1	1	O/O		29	105					V0900409



Part Change Information List

Date: June 30, 2009

Model	Code	PCIL Nr.	PCIL Correction	Old part number	New part number	Description	Old Q'ty	New Q'ty	Int	3DPC	Page	Index	Set	Set Int	RTB	Note	Ref. Nr.	ECN Nr.
PG-C1	B229	200906		B2290114	B2290117	PLOTTER SECTION:GJ:C1:SERVICE PARTS	1	1	X/O		29	1					V0804843	8101439
PG-C1	B229	200906		B2290117	B2290118	PLOTTER SECTION:GJ:C1:SERVICE PARTS	1	1	X/O		29	1					V0901410	9041120



Part Change Information List

Date: July 31, 2009

Model	Code	PCIL Nr.	PCIL Correction	Old part number	New part number	Description	Old Q'ty	New Q'ty	Int	3DPC	Page	Index	Set	Set Int	RTB	Note	Ref. Nr.	ECN Nr.
PG-C1	B229	200907		B2292003	B2292004	DUCT:HOLDER:ASS'Y	1	1	X/O		29	3					V0901305	



Part Change Information List

Date: September 30, 2009

Model	Code	PCIL Nr.	PCIL Correction	Old part number	New part number	Description	Old Q'ty	New Q'ty	Int	3DPC	Page	Index	Set	Set Int	RTB	Note	Ref. Nr.	ECN Nr.
PG-C1	B229	200909		04503008N	04563008N	TAPPING SCREW - M3X8	4	4	O/O		25	102					V0803087	8071719
PG-C1	B229	200909		04503008N	04563008N	TAPPING SCREW - M3X8	2	2	O/O		33	102					V0803087	8071719



Part Change Information List

Date: October 30, 2009

Model	Code	PCIL Nr.	PCIL Correction	Old part number	New part number	Description	Old Q'ty	New Q'ty	Int	3DPC	Page	Index	Set	Set Int	RTB	Note	Ref. Nr.	ECN Nr.
PG-C1	B229	200910		B2292019	B2292020	FRAME:MAINTENANCE:ASS'Y	1	1	X/O		29	2					V0902553	



Part Change Information List

Date: November 30, 2009

Model	Code	PCIL Nr.	PCIL Correction	Old part number	New part number	Description	Old Q'ty	New Q'ty	Int	3DPC	Page	Index	Set	Set Int	RTB	Note	Ref. Nr.	ECN Nr.
PG-C1	B229	200911		B2290118	B2290119	PLOTTER SECTION:GJ:C1:SERVICE PARTS	1	1	X/O		29	1					V0901747	9051239
PG-C1	B229	200911		B2292018	B2292019	FRAME:MAINTENANCE:ASS'Y	1	1	X/O		29	2					V0901747	9051239



Part Change Information List

Date: December 29, 2009

Model	Code	PCIL Nr.	PCIL Correction	Old part number	New part number	Description	Old Q'ty	New Q'ty	Int	3DPC	Page	Index	Set	Set Int	RTB	Note	Ref. Nr.	ECN Nr.
PG-C1	B229	200912			B2293275	TIMING BELT:DRIVE:TRANSPORT ROLLER		1			29	11			Y		V0902915	
PG-C1	B229	200912			B2295808	HARNESS:ENTRANCE SENSOR		1			41	27			Y		V0902915	



Part Change Information List

Date: January 29, 2010

Model	Code	PCIL Nr.	PCIL Correction	Old part number	New part number	Description	Old Q'ty	New Q'ty	Int	3DPC	Page	Index	Set	Set Int	RTB	Note	Ref. Nr.	ECN Nr.
PG-C1	B229	201001			B2291918	SET SENSOR BOARD:CARTRIDGE:B229	0	1			29	12			Y		V0902601	



Part Change Information List

Date: November 30, 2010

Model	Code	PCIL Nr.	PCIL Correctio	Old part number	New part number	Description	Old Q'ty	New Q'ty	Int	3DPC	Page	Index	Set	Set Int	RTB	Note	Ref. Nr.	ECN Nr.
PG-C1	B229	201011		A1931767	M0261815	CLAMP:MIRROR:NO.1	2	2	O/O		15	11					V1001619	10070454



Part Change Information List

Date: February 28, 2011

Model	Code	PCIL Nr.	PCIL Correction	Old part number	New part number	Description	Old Q'ty	New Q'ty	Int	3DPC	Page	Index	Set	Set Int	RTB	Note	Ref. Nr.	ECN Nr.
PG-C1	B229	201102		B6456830		SD-CARD:USB:WRITER:BN-SDCGTY	1	0	X/O		71	7			RGene043		V1100185	11010728



Part Change Information List

Date: June 30, 2011

Model	Code	PCIL Nr.	PCIL Correction	Old part number	New part number	Description	Old Q'ty	New Q'ty	Int	3DPC	Page	Index	Set	Set Int	RTB	Note	Ref. Nr.	ECN Nr.
PG-C1	B229	201106		B2299590	B2299593	NVRAM - ZERO COUNTER	1	1	O/O		39	4					V1002356	

Model	Code	PCIL Number	PCIL Correction	Old part number	New part number	Description	Old Q'ty	New Q'ty	Int	3DPC	Page	Index	Set	Set Int	RTB	Note	Ref Number	ECN Number
PG-C1	B229	201501		B2293901	D0453901	MANUAL FEED UNIT:M:ASS'Y	1	1	X/O		19	9					V1403845	



Part Change Information List

Date: February 27, 2015

Model	Code	PCIL Number	PCIL Correction	Old part number	New part number	Description	Old Q'ty	New Q' ty	Int	3DPC	Page	Index	Set	Set Int	RTB	Note	Ref Number	ECN Number
PG-C1	B229	201502		B2293901	D0453901	MANUAL FEED UNIT:M:ASS'Y	1	1	X/O		19	9					V1403845	



Part Change Information List

Date: Octorber 4, 2016

Model	Code	PCIL Number	PCIL Correction	Old part number	New part number	Description	Old Q'ty	New Q'ty	Int	3DPC	Page	Index	Set	Set Int	RTB	Note	Ref Number	ECN Number
PG-C1	B229	201609		B2290119	B2290126	PLOTTER SECTION:GJ:C1:SERVICE PARTS	1	1	O/O	N	29	1					V1602133	



Part Change Information List

Date: June 5, 2017

Model	Code	PCIL Number	PCIL Correction	Old part number	New part number	Description	Old Q'ty	New Q'ty	Int	3DPC	Page	Index	Set	Set Int	RTB	Note	Ref Number	ECN Number
PG-C1	B229	201705		14021342		DIODE - 1SR154-400	-	0	X/O	N	65	119					V1700775	