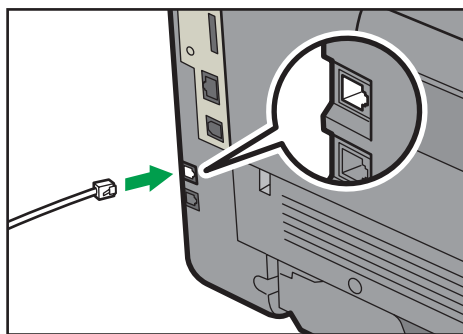


For safe and correct use, be sure to read the Safety Information in "Read This First" before using the machine. This manual briefly describes the procedure for initial setup for fax function. For more details about other information, see User Guide on the CD-ROM.

## 1 Connection

Connect a telephone line cord to LINE.  
If using an external telephone, connect the telephone to TEL.



DBH084

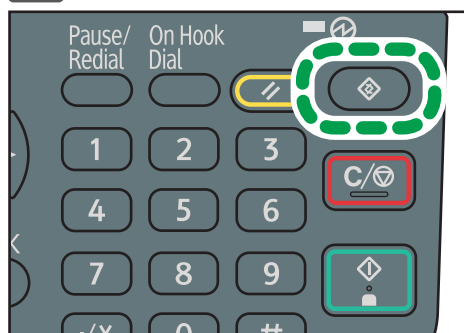
## 2 Initial Setup

Make sure that you have set the date and time, and the language you want to display. If you have not yet, set the date, time, and language.

See Connecting the Machine/System Settings for the date and time setting, and see Getting Started for the language setting.

### ❖ Setting the Country Code

#### 1 Press the [User Tools] key



DBH020

#### 2 Select [Fax Features] ▶ Press [OK]

#### 3 Select [Administrator Tools] ▶ Press [OK]

#### 4 Select [Country Code] ▶ Press [OK]

#### 5 Select the country code you want to use ▶ Press [OK]

#### 6 Restart the machine

## 3 Selecting the Telephone Line Type

#### 1 Press the [User Tools] key

#### 2 Select [Fax Features] ▶ Press [OK]

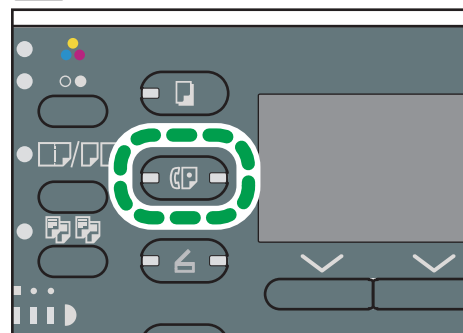
#### 3 Select [Administrator Tools] ▶ Press [OK]

#### 4 Select [Select Dial/Push Phone] ▶ Press [OK]

#### 5 Select [Push Phone] or [Dial Phone (10PPS)] ▶ Press [OK]

## 4 Basic Operation for Sending a Fax

#### 1 Press the [Facsimile] key



DBH012

#### 2 Place the original on the exposure glass or in the ADF

#### 3 Enter the fax number using the number Keys ▶ Press [Start]

When you place original on the exposure glass, perform the following steps to scan the subsequent pages of the original.

#### 4 If you have more originals to scan, place the next original on the exposure glass within 60 seconds ▶ Press [Start]

Repeat this step until all originals are scanned.

#### 5 When all originals have been scanned, press [#]

© 2013  
Printed in France  
EN (GB)

M173-7602



M1737602