

Paper Feed Unit PB1070/PB1060

(Code: M440/M441)

(SP 3600DN/SP 4510DN/SP 4520DN/SP 400DN/SP 450DN/SP 3600SF/SP 3610SF/SP 4510SF/MP 401SPF)

INSTALLATION GUIDE

❖ About the paper feed units

The following paper feed units are available:

- PB1070: holds up to 500 sheets of paper
- PB1060: holds up to 250 sheets of paper

For SP 3600DN/SP 400DN/SP 3600SF/SP 3610SF:

You can install a 250-sheet paper feed unit or a 500-sheet paper feed unit.

For SP 4510DN/SP 4520DN/SP 450DN/SP 4510SF/MP 401SPF:

Any combination of up to two of the 250-sheet and 500-sheet paper feed units is available.

The procedure below uses illustrations of the PB1070.

⚠ WARNING:

- If the machine topples, or if a cover or other part gets broken, you must turn the power switch to off and disconnect the power cord plug from the wall outlet. Then contact your service representative and report the problem. Do not use the machine. Doing so could result in fire or electric shock.

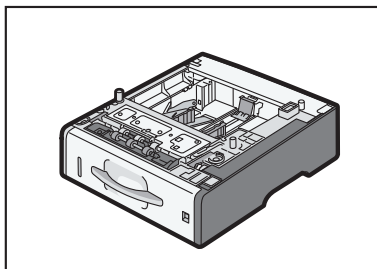
⚠ CAUTION:

- SP 3600DN/SP 400DN weighs approximately 15 kg (33.0 lb.).
SP 4510DN/SP 4520DN/SP 450DN weigh approximately 16 kg (36.0 lb.).
SP 3600SF/SP 3610SF weigh approximately 19 kg (42.0 lb.).
SP 4510SF/MP 401SPF weigh approximately 23 kg (51.0 lb.).
When moving the machine, use the inset grips on both sides, and lift slowly in pairs. The machine will break or cause injury if dropped.
- Do not place the machine on an unstable or tilted surface. If it topples over, an injury might occur.
- Lifting the paper feed unit carelessly or dropping may cause injury.
- It is dangerous to handle the plug with wet hands. Doing this may result in receiving an electric shock.
- Before moving the machine, unplug the power cord from the wall outlet. If the cord is unplugged abruptly, it could become damaged. Damaged plugs or cords can cause an electrical or fire hazard.

★ Important

- To attach two paper feed units at the same time, first stack them one upon the other, and then attach them as a single unit.
- Do not place the machine directly on the floor.

1 Check the contents of the package.

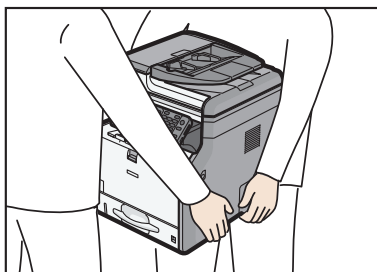


CXC750

2 Turn the machine off and unplug the power cord.

3 Remove the packaging from the paper feed unit.

4 Lift the machine using the inset grips on both sides of the machine.

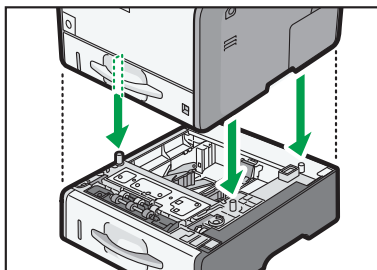


CXC406

When moving the machine, do not hold on the following parts as doing so could cause a malfunction:

- The handle onto the standard paper feed tray.

5 There are three upright pins on the optional paper feed unit. Align them with the holes on the underside of the machine, and then carefully lower the machine.



CXC407

6 Plug in the power cord, and then turn on the machine.

7 Print the configuration page to confirm that the unit was attached correctly.

Note

- To confirm whether the optional paper feed unit was correctly attached, print the configuration page, and check "Attached Equipment" on the configuration page. If the unit was attached correctly, "Tray 2" and "Tray 3" will appear.
- For more information about printing the configuration page, see the manuals supplied with this machine.
- If the optional paper feed unit was not installed properly, repeat the procedure from the beginning. If it cannot be installed correctly even after reattempting installation, contact your sales or service representative.
- To use the paper feed unit, configure the printer options in "Accessories" in the printer driver. For details about opening "Accessories", see "Configuring Option Settings for the Printer", Driver Installation Guide.

© 2014-2016
Printed in China
EN (GB)
M440-6710B



M4406710B