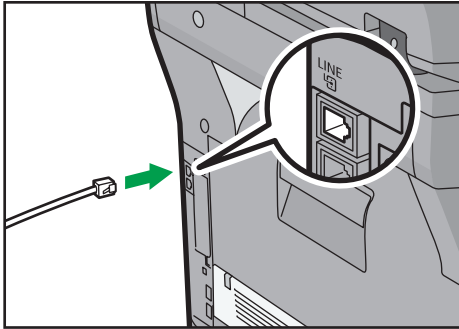


Read this manual carefully before you use the product and keep it handy for future reference. For safe and correct use, please be sure to read the Safety Information before using the machine. This manual briefly describes the procedure for initial setup for fax function. For more details about other information, see User Guide on the CD-ROM.

1 Connection

Connect a telephone line cord to LINE.
If using an external telephone, connect the telephone to TEL.



CXC671

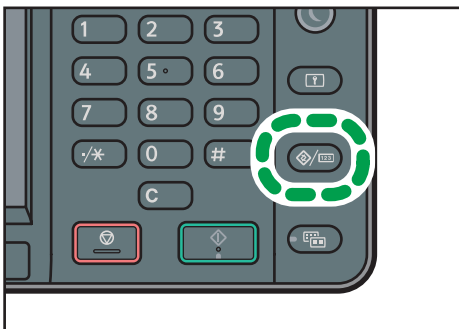
2 Initial Setup

Make sure that you have set the date and time, and the language you want to display. If you have not yet, set the date, time, and language.

See Connecting the Machine/System Settings for the date and time setting, and see Getting Started for the language setting.

❖ Setting the Country Code

- 1 Press the [User Tools/Counter] key.



CXC251

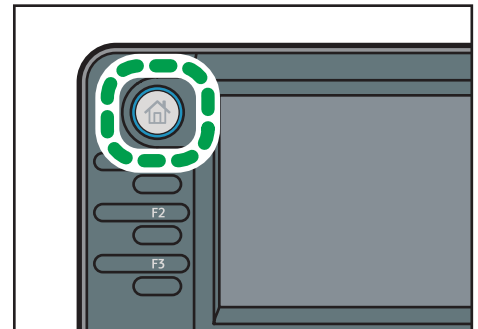
- 2 Press [Facsimile Features].
- 3 Press [Initial Settings].
- 4 Press [▼], and then press [Country Code].
- 5 Specify the country code you want to use, and then restart the machine.

3 Selecting the Telephone Line Type

- 1 Press the [User Tools/Counter] key.
- 2 Press [Facsimile Features].
- 3 Press [Initial Settings].
- 4 Press [▼], and then press [Select Dial/Push Phone].
- 5 Press [Push Button Phone] or [Dial Phone (10PPS)] to select the line, and then press [OK].
- 6 Press [Exit] three times.

4 Basic Operation for Sending a Fax

- 1 Press the [Home] key on the top left of the control panel, and press the [Facsimile] icon on the [Home] screen.



CXC252

- 2 Place the original on the exposure glass or in the ADF.
- 3 Enter the fax number using the number keys.
- 4 Press the [Start] key.
When you place original on the exposure glass and Memory Transmission mode is enabled, perform the following steps to scan the subsequent pages of the original.
- 5 If you have more originals to scan, place the next original on the exposure glass within 60 seconds, and then press the [Start] key.
Repeat this step until all originals are scanned.
- 6 When all originals have been scanned, press the [#] key to start sending the fax.

© 2013
Printed in France
EN (GB)

M160-7537



M1607537