

**Reissued: 13-Apr-16**

Model: K-C4L/C4a	Date: 28-Dec-12	No.: RD160001g
------------------	-----------------	----------------

**RTB Reissue**

The items in ***bold italics*** have been added.

Subject: Firmware Release Note: BICU_IC		Prepared by: Y.Suzuki	
From: 2nd Tech Service Sect., MFP/Printer Tech Service Dept.			
Classification:	<input type="checkbox"/> Troubleshooting <input type="checkbox"/> Mechanical <input type="checkbox"/> Paper path <input type="checkbox"/> Product Safety	<input type="checkbox"/> Part information <input type="checkbox"/> Electrical <input type="checkbox"/> Transmit/receive <input checked="" type="checkbox"/> Other (Firmware)	<input type="checkbox"/> Action required <input type="checkbox"/> Service manual revision <input type="checkbox"/> Retrofit information <input checked="" type="checkbox"/> Tier 2

This RTB has been issued to announce the firmware release information for the **BICU\_IC**.

Version	Program No.	Effective Date	Availability of RFU
<b><i>1.08</i></b>	<b><i>USA_EUR: D1615500H ASI_TWN: D1615501H CHN: D1615502H</i></b>	<b><i>December 2015 production</i></b>	<b><i>Not available</i></b>
1.07	USA_EUR: D1615500G ASI_TWN: D1615501G CHN: D1615502G	October 2015 production	Not available
1.06	USA_EUR: D1615500F ASI_TWN: D1615501F CHN: D1615502F	April 2014 production	Not available
1.05	USA_EUR: D1615500E ASI_TWN: D1615501E CHN: D1615502E	September 2013 production	Not available
1.04	USA_EUR: D1615500D ASI_TWN: D1615501D CHN: D1615502D	June 2013 production	Not available
1.03	USA_EUR: D1615500C ASI_TWN: D1615501C CHN: D1615502C	April 2013 production	Not available
1.02	USA_EUR: D1615500B ASI_TWN: D1615501B CHN: D1615502B	February 2013 production	Not available
1.01	USA_EUR: D1615500A ASI_TWN: D1615501A CHN: D1615502A	1st Mass production	Not available

**Note: Definition of Availability of RFU via @Remote**
**"Available":** The firmware can be updated via RFU or SD card.

**"Not available":** The firmware can only be updated via SD card.

Version	Modified Points or Symptom Corrected
<b><i>1.08</i></b>	<b><i>Symptom corrected: If the right door is opened and then closed, error message prompting to load paper on the bypass tray appears despite paper is set on the tray.</i></b>

**Reissued: 13-Apr-16**

Model: K-C4L/C4a	Date: 28-Dec-12	No.: RD160001g
------------------	-----------------	----------------

Version	Modified Points or Symptom Corrected
1.07	Symptom corrected: <ul style="list-style-type: none"><li>- Duplex copy jobs applied with the rotate sort function may result in JAM.</li><li>- Copying with the magnification ratio set to 108% causes the output size in horizontal direction to reduce to 97%.</li></ul>
1.06	Symptom corrected: <ul style="list-style-type: none"><li>- The rear side of the paper gets dirty (streaks appear) when the SMC is printed out using SC5-990-XXX.</li><li>- Some Traditional Chinese text characters appear garbled when the display language is changed.</li></ul>
1.05	Symptom corrected: The serial number cannot be entered in SP5-811-001.
1.04	Other changes: <ul style="list-style-type: none"><li>1. Compliance with BAM regulations.</li><li>2. Two new SP modes were added: SP5-305-101 (Auto Off Set - Limit Set) 0: OFF 1: ON (Default)</li></ul> SP5-900-001 (ID Card Copy Mode) 0: Original size depends on print paper size. 1: Original size is fixed (main-scan: 55mm, sub-scan: 87mm)
1.03	Other changes: Supports the Catalanian, Turkish, Greek, and Brazilian Portuguese display languages.
1.02	Symptom Corrected: <ul style="list-style-type: none"><li>1. Temporary countermeasure for technical limitation, "Multiple vertical black lines" (Limitation #9). Note: A permanent solution will be released in the future.</li></ul> Other Changes: <ul style="list-style-type: none"><li>1. SP6-900-001 (TWAIN Speed up) was newly added.<ul style="list-style-type: none"><li>0. Off (default)</li><li>1. On</li></ul></li></ul> Note: When enabled, this SP increases the ARDF scanning speed for TWAIN scanning jobs set for a resolution of 100, 200, or 300dpi only. Note that this may cause Moire images to appear.
1.01	1st Mass production

**Reissued: 13-Apr-16**

Model: K-C4Ly	Date: 26-Jun-13	No.: RD160003d
---------------	-----------------	----------------

**RTB Reissue**

The items in ***bold italics*** have been corrected or added.

Subject: Firmware Release Note: BICU_IC		Prepared by: Y.Suzuki	
From: 2nd Tech Service Sect., MFP/Printer Tech Service Dept.			
Classification:	<input type="checkbox"/> Troubleshooting	<input type="checkbox"/> Part information	<input type="checkbox"/> Action required
	<input type="checkbox"/> Mechanical	<input type="checkbox"/> Electrical	<input type="checkbox"/> Service manual revision
	<input type="checkbox"/> Paper path	<input type="checkbox"/> Transmit/receive	<input type="checkbox"/> Retrofit information
	<input type="checkbox"/> Product Safety	<input checked="" type="checkbox"/> Other (Firmware)	<input checked="" type="checkbox"/> Tier 2

This RTB has been issued to announce the firmware release information for the **BICU\_IC**.

Version	Program No.	Effective Date	Availability of RFU
<b>1.05</b>	<b>D1605500D</b>	<b>December 2015 production</b>	<b>Not available</b>
1.04	D1605500C	October 2015 production	Not available
1.03	D1605500B	April 2014 production	Not available
1.01	D1605500A	September 2013 production	Not available
1.00	D1605500	1st Mass production	Not available

**Note: Definition of Availability of RFU via @Remote**
**"Available":** The firmware can be updated via RFU or SD card.

**"Not available":** The firmware can only be updated via SD card.

Version	Modified Points or Symptom Corrected
<b>1.05</b>	<b><i>Symptom corrected:</i></b> <b><i>If the right door is opened and then closed, error message prompting to load paper on the bypass tray appears despite paper is set on the tray.</i></b>
1.04	Symptom corrected: - Duplex copy jobs applied with the rotate sort function may result in JAM. - Copying with the magnification ratio set to 108% causes the output size in horizontal direction to reduce to 97%.
1.03	Symptom corrected: The rear side of the paper gets dirty (streaks appear) when the SMC is printed out using SC5-990-XXX.
1.01	Symptom corrected: The serial number cannot be entered in SP5-811-001.
1.00	1st Mass production

**Reissued: 13-Apr-16**

Model: K-C4Lz	Date: 26-Jun-13	No.: RD160004d
---------------	-----------------	----------------

**RTB Reissue**

The items in ***bold italics*** have been corrected or added.

Subject: Firmware Release Note: BICU_IC		Prepared by: Y.Suzuki	
From: 2nd Tech Service Sect., MFP/Printer Tech Service Dept.			
Classification:	<input type="checkbox"/> Troubleshooting <input type="checkbox"/> Mechanical <input type="checkbox"/> Paper path <input type="checkbox"/> Product Safety	<input type="checkbox"/> Part information <input type="checkbox"/> Electrical <input type="checkbox"/> Transmit/receive <input checked="" type="checkbox"/> Other (Firmware)	<input type="checkbox"/> Action required <input type="checkbox"/> Service manual revision <input type="checkbox"/> Retrofit information <input checked="" type="checkbox"/> Tier 2

This RTB has been issued to announce the firmware release information for the **BICU\_IC**.

Version	Program No.	Effective Date	Availability of RFU
<b><i>1.04</i></b>	<b><i>D1605501D</i></b>	<b><i>December 2015 production</i></b>	<b><i>Not available</i></b>
1.03	D1605501C	October 2015 production	Not available
1.02	D1605501B	April 2014 production	Not available
1.01	D1605501A	September 2013 production	Not available
1.00	D1605501	1st Mass production	Not available

**Note: Definition of Availability of RFU via @Remote**
**"Available":** The firmware can be updated via RFU or SD card.

**"Not available":** The firmware can only be updated via SD card.

Version	Modified Points or Symptom Corrected
<b><i>1.04</i></b>	<b><i>Symptom corrected:</i></b> <b><i>If the right door is opened and then closed, error message prompting to load paper on the bypass tray appears despite paper is set on the tray.</i></b>
1.03	Symptom corrected: - Duplex copy jobs applied with the rotate sort function may result in JAM. - Copying with the magnification ratio set to 108% causes the output size in horizontal direction to reduce to 97%.
1.02	Symptom corrected: The rear side of the paper gets dirty (streaks appear) when the SMC is printed out using SC5-990-XXX.
1.01	Symptom corrected: The serial number cannot be entered in SP5-811-001.
1.00	1st Mass production

**Reissued: 13-Apr-16**

Model: Kir-C4Ly	Date: 25-Dec-13	No.: RD160006c
-----------------	-----------------	----------------

**RTB Reissue**

The items in ***bold italics*** have been corrected or added.

Subject: Firmware Release Note: BICU_IC_ASI		Prepared by: Y.Suzuki	
From: 2nd Tech Service Sect., MFP/Printer Tech Service Dept.			
Classification:	<input type="checkbox"/> Troubleshooting	<input type="checkbox"/> Part information	<input type="checkbox"/> Action required
	<input type="checkbox"/> Mechanical	<input type="checkbox"/> Electrical	<input type="checkbox"/> Service manual revision
	<input type="checkbox"/> Paper path	<input type="checkbox"/> Transmit/receive	<input type="checkbox"/> Retrofit information
	<input type="checkbox"/> Product Safety	<input checked="" type="checkbox"/> Other (Firmware)	<input checked="" type="checkbox"/> Tier 2

This RTB has been issued to announce the firmware release information for the **BICU\_IC\_ASI**.

Version	Program No.	Effective Date	Availability of RFU
<b>1.05</b>	<b>D1605502C</b>	<b>December 2015 production</b>	<b>Not available</b>
1.04	D1605502B	October 2015 production	Not available
1.03	D1605502A	April 2014 production	Not available
1.02	D1605502	1st Mass production	Not available

**Note: Definition of Availability of RFU via @Remote**
**"Available":** The firmware can be updated via RFU or SD card.

**"Not available":** The firmware can only be updated via SD card.

Version	Modified Points or Symptom Corrected
<b>1.05</b>	<b><i>Symptom corrected:</i></b> <b><i>If the right door is opened and then closed, error message prompting to load paper on the bypass tray appears despite paper is set on the tray.</i></b>
1.04	Symptom corrected: <ul style="list-style-type: none"> <li>- Duplex copy jobs applied with the rotate sort function may result in JAM.</li> <li>- Copying with the magnification ratio set to 108% causes the output size in horizontal direction to reduce to 97%.</li> </ul>
1.03	Symptom corrected: <ul style="list-style-type: none"> <li>- The rear side of the paper gets dirty (streaks appear) when the SMC is printed out using SC5-990-XXX.</li> <li>- Some Traditional Chinese text characters appear garbled when the display language is changed.</li> </ul>
1.02	Initial release for Model Kir-C4Ly

Model: K-C4L		Date: 1-Sep-14	No.: RD160007
Subject: How to adjust the LE registration		Prepared by: Y.Saitoh	
From: 2nd Tech Service Sect., MFP/P Tech Service Dept.			
Classification:	<input checked="" type="checkbox"/> Troubleshooting <input type="checkbox"/> Mechanical <input type="checkbox"/> Paper path <input type="checkbox"/> Product Safety	<input type="checkbox"/> Part information <input type="checkbox"/> Electrical <input type="checkbox"/> Transmit/receive <input type="checkbox"/> Other (     )	<input checked="" type="checkbox"/> Action required <input type="checkbox"/> Service manual revision <input type="checkbox"/> Retrofit information <input checked="" type="checkbox"/> Tier 2

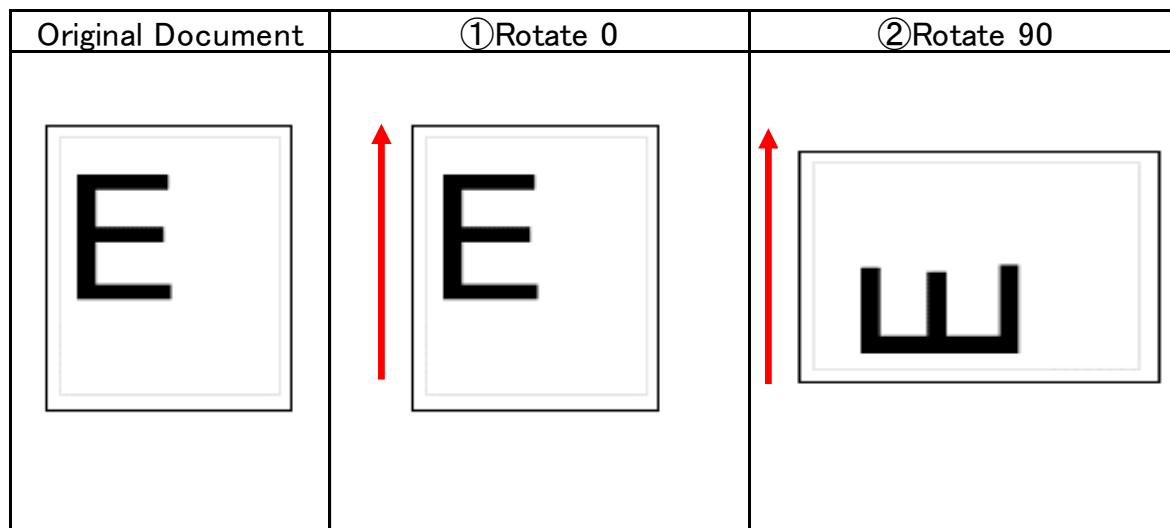
## SYMPTOM

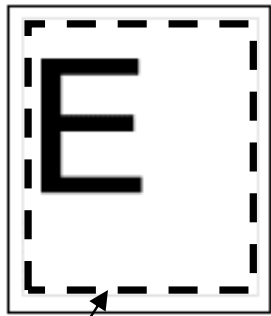
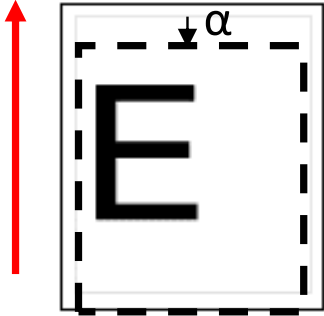
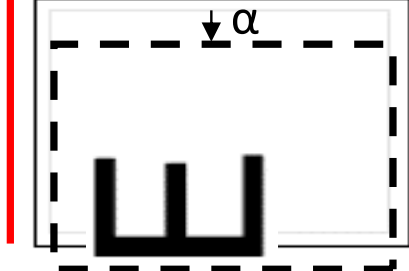
The leading edge registration settings are not applied in the vertical direction of the image with copy or print jobs, if the paper is loaded in the tray **at 90 degrees to (i.e. in the opposite orientation of) the original.**

## CAUSE

The image must be rotated 90 degrees if the paper is loaded perpendicular to the direction of the image on the original (see “2. Rotate 90” below). As a result, the leading edge registration settings (See “ $\alpha$ ” below) are not applied in the direction of the image, as the user would expect.

Paper feed direction (**red arrow**) and orientation of paper in the tray:



Model: K-C4L	Date: 1-Sep-14	No.: RD160007
Original Document	①Rotate 0	②Rotate 90
 <div data-bbox="199 712 343 779">image</div>		

## SOLUTION

Do the following:

1. Load the paper in the tray in the **same direction** as the image on the original, and then adjust the leading edge registration, and:
2. Do the registration adjustment with the following SP modes:  
 Simplex: **SP1-001-002**  
 Duplex: **SP1-001-002 and SP1-001-013**


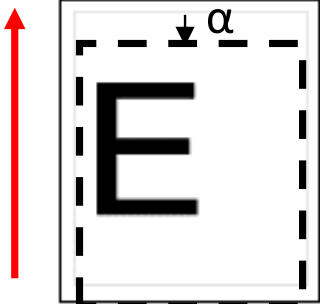
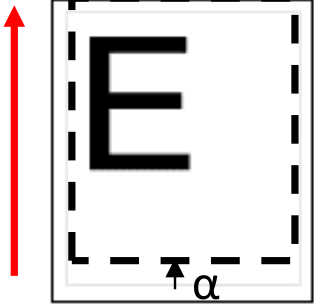
### Note:

- 1) For duplex, the value of **SP1-001-002** is applied to **page 2** (the rear side). This is because in duplex mode, the second image is printed first. The value of **SP1-001-013** is then applied to **page 1** (the front side).
- 2) **Higher** values shift the image toward the **trailing** edge, and **lower** values toward the **leading** edge (See "The setting up  $\alpha$ " and "The setting down  $\alpha$ " below, respectively).

Model: K-C4L

Date: 1-Sep-14

No.: RD160007

Original Document	①The setting up $\alpha$	②The setting down $\alpha$
		



Model: K-C4L		Date: 1-Jul-15	No.: RD160008
Subject: Rear cover change (for the China model only)		Prepared by: Y.Suzuki	
From: 2nd Tech Service Sect., MFP/P Tech Service Dept.			
Classification:	<input type="checkbox"/> Troubleshooting <input type="checkbox"/> Mechanical <input type="checkbox"/> Paper path <input type="checkbox"/> Product Safety	<input checked="" type="checkbox"/> Part information <input type="checkbox"/> Electrical <input type="checkbox"/> Transmit/receive <input type="checkbox"/> Other (     )	<input type="checkbox"/> Action required <input type="checkbox"/> Service manual revision <input type="checkbox"/> Retrofit information <input type="checkbox"/> Tier 2

Old part number	New part number	Description	Q'ty	Int	Model code	Note
D1585897	D1585894	COVER:COVER:REAR:L:SECC	1 - 1	X/X	D160-21,25	O/O as a set
D1585899	D1585895	COVER:COVER:REAR:SECC	1 - 1	X/X		
D1601257	D1601282	COVER:REAR:BL:SECC	1 - 1	X/X		
D1585897	D1585894	COVER:COVER:REAR:L:SECC	1 - 1	X/X	D161-21,25	O/O as a set
D1585899	D1585895	COVER:COVER:REAR:SECC	1 - 1	X/X		
D1611257	D1611281	COVER:REAR:CL	1 - 1	X/X		

**Change:** The color of rear cover was changed (for China model only)

**Reason:** The material was changed.

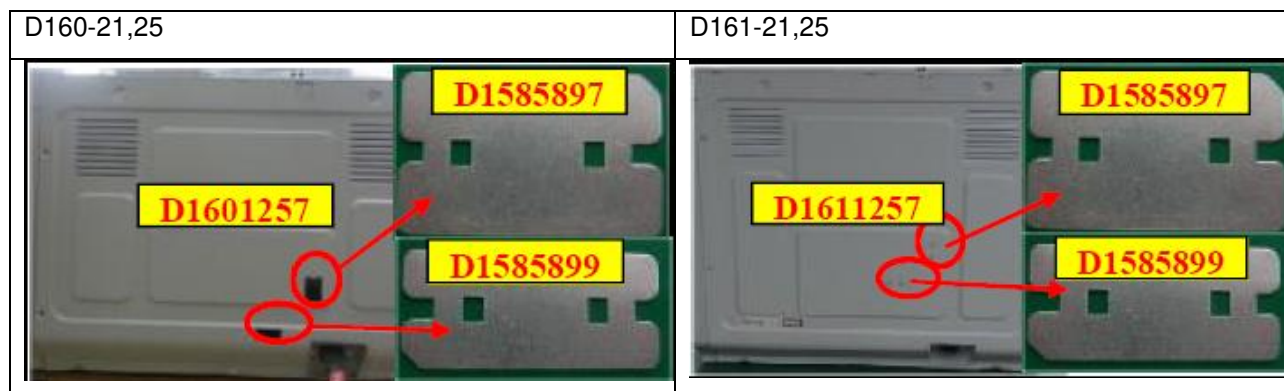
**Note:** There is no difference in function between the old and new rear covers. The part number was changed for control purposes. Therefore, these parts do not have to be replaced as a set if the color difference is acceptable to the customer.



Model: K-C4L

Date: 1-Jul-15

No.: RD160008


**RAI (China) Production**

MODEL NAME	V/Hz	DESTINATION	CODE	SERIAL NUMBER
Ricoh MP 2001L	220/50	China	D160-21	E345M6XXXXXX
Gestetner DSm1020L	220/50	China	D160-25	E345M6XXXXXX
Ricoh MP 2501L	220/50	China	D161-21	E354M530001
Gestetner DSm1025L	220/50	China	D161-25	E355M6XXXXXX

Model: K-C4L		Date: 13-Oct-15	No.: RD160009
Subject: Manual correction - Caution note on PSU replacement		Prepared by: Y.Suzuki	
From: 2nd MFP Tech Service Sec., MFP Tech Service Dept.			
Classification:	<input type="checkbox"/> Troubleshooting <input type="checkbox"/> Mechanical <input type="checkbox"/> Paper path <input checked="" type="checkbox"/> Product Safety	<input type="checkbox"/> Part information <input type="checkbox"/> Electrical <input type="checkbox"/> Transmit/receive <input type="checkbox"/> Other (     )	<input type="checkbox"/> Action required <input checked="" type="checkbox"/> Service manual revision <input type="checkbox"/> Retrofit information <input checked="" type="checkbox"/> Tier 2

Please add the following caution in the field service manual in this section:

HTML version: Top Page > Main Chapters > Replacement and Adjustment > Electrical Components > PSU (Power Supply Unit)

PDF version: page 254

Parts number	Parts description	Product code
AZ230265	POWER SUPPLY UNIT:EU/AA/CHN:157W	D160, D161
AZ230263	POWER SUPPLY UNIT:NA:157W	D160, D161

Model: K-C4L

Date: 13-Oct-15

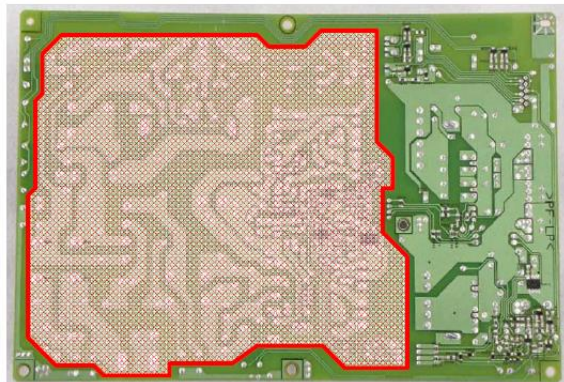
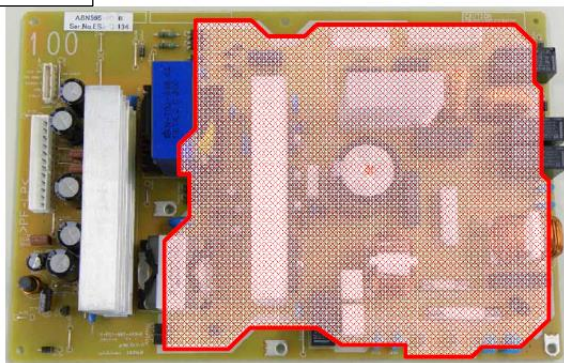
No.: RD160009

## ⚠ CAUTION:

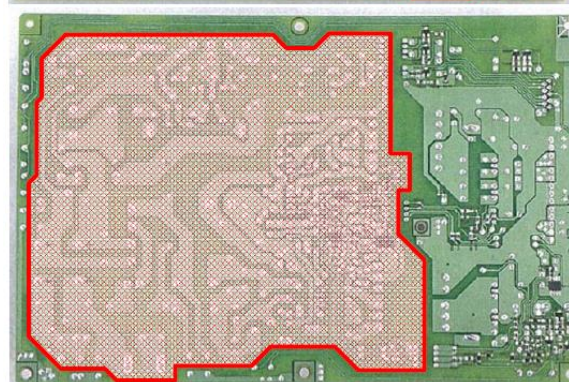
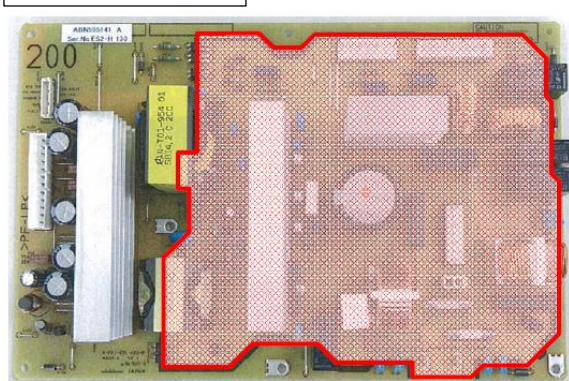
**NEVER touch** the areas outlined in red in the photos below, to prevent electric shock caused by residual charge.

Residual charge of about 100V-400V remains on the PSU board for several months even when the board has been removed from the machine after turning off the machine power and unplugging the power cord.

NA



EU / AA / CHN



Model: K-C4L		Date: 24-Nov-15	No.: RD160010
Subject: Part Information - Exit guide plate		Prepared by: T.Hirakawa	
From: 1st Field Quality Management Sec., FQM dept.			
Classification:	<input type="checkbox"/> Troubleshooting <input type="checkbox"/> Mechanical <input type="checkbox"/> Paper path <input type="checkbox"/> Product Safety	<input checked="" type="checkbox"/> Part information <input type="checkbox"/> Electrical <input type="checkbox"/> Transmit/receive <input type="checkbox"/> Other (      )	<input type="checkbox"/> Action required <input type="checkbox"/> Service manual revision <input type="checkbox"/> Retrofit information <input type="checkbox"/> Tier 2

**Change:** The shape of the guide plate was changed.

**Reason:** To further improve the paper handling of thin paper (reducing Jam B occurrences).

**Target models:**

D160-60/61/64/65/69, D17—17/27/29

Old part number	New part number	Description	Q'ty	Int	Page	Index	Note
D1704670	D1704669	GUIDE PLATE:EXIT:RIGHT LOWER:ASS'Y	1-1	X/O	-	-	

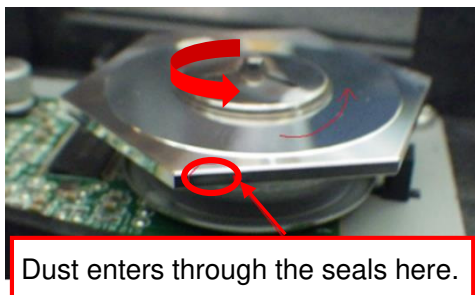
Model: K-C4		Date: 21-Dec-15	No.: RD160011
Subject: Modified polygon mirror housing to prevent blurred image and low image density		Prepared by: A.Ishida	
From: 2nd Tech Service Sect., MFP/P Tech Service Dept.			
Classification:	<input checked="" type="checkbox"/> Troubleshooting <input type="checkbox"/> Mechanical <input type="checkbox"/> Paper path <input type="checkbox"/> Product Safety	<input type="checkbox"/> Part information <input type="checkbox"/> Electrical <input type="checkbox"/> Transmit/receive <input type="checkbox"/> Other (     )	<input type="checkbox"/> Action required <input type="checkbox"/> Service manual revision <input type="checkbox"/> Retrofit information <input type="checkbox"/> Tier 2

## SYMPTOM

Blurred image, low image density

## CAUSE

Dust enters the laser unit and adheres to the polygon mirror.



## SOLUTION

The height of the seals covering the polygon mirrors was increased (from 3mm to 6mm) to prevent dust from entering the housing.

Old part number	New part number	Description	Q'ty	Int	Page	Index	Note
D1581961	<b>D1581900</b>	OPTICAL HOUSING:ASS'Y	1	O/O	-	-	-



Model: K-C4

Date: 21-Dec-15

No.: RD160011

### Cut-in Serial Numbers

The new optical housing ass'y has been applied at the factory from the following serial numbers.

Name	Destination	Product Code	Serial #
MP 2501SP	TWN	D15819	E325MC70001
	CHN	D15821	E325MC30001
	EU	D15827	E325MC20001
	KOR	D15828	E325MC80001
	AA	D15829	TBA
MP 2001SP	NA	D15917	E335MB10100
	TWN	D15919	E335MC70001
	CHN	D15921	E335MC30001
	EU	D15927	E335MB21048
	AA	D15929	E335MB10001
MP 2001L	CHN	D16021	E345MC30001
	CHN	D16025	E345MC10001
	AA	D16029	TBA
MP 2501L	CHN	D16121	E355MB30408
	CHN	D16125	E355MC10001
	AA	D16129	E355MB50213