

**Reissued: 30-Jul-08**

Model: <b>Stella-C3</b>	Date: 23-Aug-06	No.: RB262001e
-------------------------	-----------------	----------------

**RTB Reissue**

The items in bold italics have been added.

Subject: Firmware Release Note: Engine		Prepared by: M.Ishihara	
From: 1st Tech. Support Sec. Service Support Dept.			
Classification:	<input type="checkbox"/> Troubleshooting <input type="checkbox"/> Part information <input type="checkbox"/> Action required		
	<input type="checkbox"/> Mechanical <input type="checkbox"/> Electrical <input type="checkbox"/> Service manual revision		
	<input type="checkbox"/> Paper path <input type="checkbox"/> Transmit/receive <input type="checkbox"/> Retrofit information		
	<input checked="" type="checkbox"/> Other (       )		

This RTB has been issued to announce the firmware release information for the **Engine (BICU-IC)**.

For USA/Europe basic model

Version	Program No.	Effective Date
<b>0.33</b>	<b><i>B2625531G</i></b>	<b><i>Aug/08 production</i></b>
0.32	B2625531F	Sep/07 production
0.31	B2625531E	Feb/07 Production
0.27	B2625531C	August 2006 production
0.26	B2625531B	1st Mass production.

Version	Modified Points or Symptom Corrected
<b>0.33</b>	<b><i>Symptom corrected: SC142 (SBU white/black level correction error)</i></b>
0.32	Basic Model only: 1. If a DF jam occurs when the counting timing for the optional key card is set to "At paper exit", the blank page that is printed out is then counted. 2. An OHP sheet fed from the bypass tray is counted as thick paper when printing from the GDI controller.  Basic and MFP model: 3. White spots appear on the image.
0.31	1. One page was not counted on the key counter when in odd pages duplex printing. 2. Duplex printing was not control properly when the decrement key card was connected on the machine. 3. Word data correction for the multiple languages.
0.27	Symptom corrected: The machine stops scanning the original under the following conditions: - The originals are scanned in the DF using reduction - Many originals are scanned in simplex mode  Other changes: Changed the registration adjustment range for the DF main-scan
0.26	For 1st Mass production.

**Reissued: 30-Jul-08**

Model: <b>Stella-C3</b>	Date: 23-Aug-06	No.: RB262001e
-------------------------	-----------------	----------------

For Asia basic model

Version	Program No.	Effective Date
<b>0.33</b>	<b>B2625533D</b>	<b>Aug/08 production</b>
0.32	B2625533C	Sep/07 production
0.31	B2625533B	Feb/07 Production
0.26	B2625533A	1st Mass production.

Version	Modified Points or Symptom Corrected
<b>0.33</b>	<b>Symptom corrected:</b> <b>SC142 (SBU white/black level correction error)</b>
0.32	Basic Model only: <ol style="list-style-type: none"> <li>1. If a DF jam occurs when the counting timing for the optional key card is set to "At paper exit", the blank page that is printed out is then counted.</li> <li>2. An OHP sheet fed from the bypass tray is counted as thick paper when printing from the GDI controller.</li> </ol> Basic and MFP model: <ol style="list-style-type: none"> <li>3. White spots appear on the image.</li> </ol>
0.31	<ol style="list-style-type: none"> <li>1. One page was not counted on the key counter when in odd pages duplex printing.</li> <li>2. Duplex printing was not control properly when the decrement key card was connected on the machine.</li> <li>3. Word data correction for the multiple languages.</li> </ol>
0.26	For 1st Mass production.

For Generic MFP model

Version	Program No.	Effective Date
<b>0.29</b>	<b>B2625540F</b>	<b>Aug/08 production</b>
0.28	B2625540E	Mar/08 production
0.27	B2625540D	Sep/07 Production
0.26	B2625540C	Feb/07 Production
0.25	B2625540B	1st Mass production.

Version	Modified Points or Symptom Corrected
<b>0.29</b>	<b>Symptom corrected:</b> <b>SC142 (SBU white/black level correction error)</b>
0.28	Error correction: "Replace Photoconductor" alarm does not work on the S-C3 Fax and Printer/Scanner/Fax models.
0.27	Basic and MFP model: <ol style="list-style-type: none"> <li>1. White spots appear on the image.</li> </ol>

**Reissued: 30-Jul-08**

Model: <b>Stella-C3</b>		Date: 23-Aug-06	No.: RB262001e
Version	Modified Points or Symptom Corrected		
0.26	<ol style="list-style-type: none"><li>1. One page was not counted on the key counter when in odd pages duplex printing.</li><li>2. Duplex printing was not control properly when the decrement key card was connected on the machine.</li><li>3. Word data correction for the multiple languages.</li><li>4. Part of the trailing edge was not printed on over 420mm length copy using the by-pass feed table when the machine starts from the sleep mode.</li></ol>		
0.25	For 1st Mass production.		

**Reissued: 03-Dec-07**

Model: Stella-C3	Date: 25-Sep-06	No.: RB262002a
------------------	-----------------	----------------

**RTB Reissue**

The items in bold italics have been corrected or added.

Subject: Firmware Release Note: Fax		Prepared by: M.Ishihara	
From: 1st Tech. Support Sec. Service Support Dept.			
Classification:	<input type="checkbox"/> Troubleshooting <input type="checkbox"/> Mechanical <input type="checkbox"/> Paper path <input checked="" type="checkbox"/> Other (      )	<input type="checkbox"/> Part information <input type="checkbox"/> Electrical <input type="checkbox"/> Transmit/receive	<input type="checkbox"/> Action required <input type="checkbox"/> Service manual revision <input type="checkbox"/> Retrofit information

This RTB has been issued to announce the firmware release information for the Fax.

Version	Program No.	Effective Date
<b>02.00.00</b>	<b>B2845522B</b>	<b>December 2007 production</b>
01.00.00	B2845522A	1st Mass production.

Version	Modified Points or Symptom Corrected
<b>02.00.00</b>	<b>Other changes:</b> <b>1. Supports the Catalan and Turkish languages.</b> <b>For the details of this, please refer to RTB#RB262024 "Supports the Catalan and Turkish languages".</b> <b>Note: To support this feature, install all of the following firmware:</b> <ul style="list-style-type: none"> <li>- <b>System_Copy firmware ver 1.04 or later</b></li> <li>- <b>Printer firmware ver 1.03 or later</b></li> <li>- <b>Websys firmware ver 1.05 or later</b></li> <li>- <b>Scanner firmware ver 01.02 or later</b></li> <li>- <b>Fax firmware ver 02.00.00 or later</b></li> <li>- <b>FCU firmware ver 02.00.00 or later</b></li> </ul>
01.00.00	1st Mass production.

**Reissued: 25-Apr-16**

Model: Stella-C3	Date: 25-Sep-06	No.: RB262003b
------------------	-----------------	----------------

**RTB Reissue**

The items in bold italics have been corrected or added.

Subject: Firmware Release Note: FCU		Prepared by: H. Morishima	
From: 2nd Tech Service Sect., MFP/Printer Tech Service Dept.			
Classification:	<input type="checkbox"/> Troubleshooting <input type="checkbox"/> Part information <input type="checkbox"/> Action required		
	<input type="checkbox"/> Mechanical <input type="checkbox"/> Electrical <input type="checkbox"/> Service manual revision		
	<input type="checkbox"/> Paper path <input type="checkbox"/> Transmit/receive <input type="checkbox"/> Retrofit information		
	<input checked="" type="checkbox"/> Other (      )		

This RTB has been issued to announce the firmware release information for the FCU.

Version	Program No.	Effective Date	Availability of RFU
<b>03.00.00</b>	<b>B2845570C</b>	-	<b>Available</b>
02.00.00	B2845570B	December 2007 production	Available
01.00.00	B2845570A	1st Mass production.	Available

**Note: Definition of Availability of RFU via @Remote**

**“Available”:** The firmware can be updated via RFU or SD card.

**“Not available”:** The firmware can only be updated via SD card.

Version	Modified Points or Symptom Corrected
<b>03.00.00</b>	<b><i>Symptom corrected:</i></b> <b><i>If an error, for example, 14-30 occurs while sending folders, the machine may not recover from the error nor report the error.</i></b>
02.00.00	Other changes: 1. Supports the Catalan and Turkish languages. For the details of this, please refer to RTB#RB262024 "Supports the Catalan and Turkish languages". Note: To support this feature, install all of the following firmware: <ul style="list-style-type: none"> <li>- System_Copy firmware ver. 1.04 or later</li> <li>- Printer firmware ver. 1.03 or later</li> <li>- Websys firmware ver. 1.05 or later</li> <li>- Scanner firmware ver. 01.02 or later</li> <li>- Fax firmware ver. 02.00.00 or later</li> <li>- FCU firmware ver. 02.00.00 or later</li> </ul>
01.00.00	1st Mass production.

**Reissued: 27-Aug-07**

Model: Stella-C3	Date: 25-Sep-06	No.: RB262004b
------------------	-----------------	----------------

**RTB Reissue**

The items in bold italics have been added.

Subject: Firmware Release Note: Net File		Prepared by: M.Ishihara	
From: 1st Tech. Support Sec. Service Support Dept.			
Classification:	<input type="checkbox"/> Troubleshooting <input type="checkbox"/> Part information <input type="checkbox"/> Action required		
	<input type="checkbox"/> Mechanical <input type="checkbox"/> Electrical <input type="checkbox"/> Service manual revision		
	<input type="checkbox"/> Paper path <input type="checkbox"/> Transmit/receive <input type="checkbox"/> Retrofit information		
	<input checked="" type="checkbox"/> Other (        )		

This RTB has been issued to announce the firmware release information for the **Net File**.

Version	Program No.	Effective Date
<b>2.04</b>	<b>B8925528C</b>	<b>August 2007 production</b>
2.03	B8925528B	November 2006 production
1.03	B8925528A	1st Mass production.

Version	Modified Points or Symptom Corrected
<b>2.04</b>	<b>Symptom corrected:</b> <ol style="list-style-type: none"> <li><b>Documents might fail to be sent to SMB or NCP folder paths containing a mix of both 1-byte and 2-byte characters. This only happened if the folder paths were imported to the address book from a csv file via SDM for Admin.</b></li> <li><b>A user's Scan to NCP connection type (Bindery or NDS) cannot be changed using the SDM for Admin Address Management Tool.</b></li> <li><b>Accessing the document server in WIM via a single sign-on server might result in "404 Not Found". This only happens if the url used to access WIM contains a "Host Name" and "Domain Name" (The "domain name" setting in the MFP is not blank.). It does not happen if the url contains an IP address.</b></li> </ol> <b>Note: To fix this issue, all of the following firmware must be applied:</b> <ul style="list-style-type: none"> <li><b>System firmware ver 1.03 or later</b></li> <li><b>Websys firmware ver 1.04 or later</b></li> <li><b>NFA firmware ver 2.04 or later</b></li> <li><b>Printer firmware ver 1.02 or later</b></li> </ul>
2.03	Fixed: Minor bug correction.
1.03	1st Mass production.

**Reissued: 18-Sep-14**

Model: S-C3	Date: 25-Sep-06	No.: RB262005h
-------------	-----------------	----------------

**RTB Reissue**

The items in bold italics have been added.

Subject: Firmware Release Note: NIB		Prepared by: Y. Saitoh	
From: 2nd Tech Service Sect., MFP/Printer Tech Service Dept.			
Classification:	<input type="checkbox"/> Troubleshooting <input type="checkbox"/> Mechanical <input type="checkbox"/> Paper path <input checked="" type="checkbox"/> Other (      )	<input type="checkbox"/> Part information <input type="checkbox"/> Electrical <input type="checkbox"/> Transmit/receive	<input type="checkbox"/> Action required <input type="checkbox"/> Service manual revision <input type="checkbox"/> Retrofit information

This RTB has been issued to announce the firmware release information for the NIB.

Version	Program No.	Effective Date	Availability of RFU
6.19	B8925526H	-	Available
6.17	B8925526G	September 2010 production	Available
6.16	B8925526F	February 2010 production	Available
6.15	B8925526E	January 2009 production	Available
6.14	B8925526D	February 2008 production	Available
6.11	B8925526C	August 2007 production	Available
6.07	B8925526B	January 2007 production	Available
6.06	B8925526A	1st Mass production	Available

**Note: Definition of Availability of RFU via @Remote**
**"Available": The firmware can be updated via RFU or SD card.**
**"Not available": The firmware can only be updated via SD card.**

Version	Modified Points or Symptom Corrected
6.19	Error Correction: 1. An httpd timeout has been implemented to prevent Web Image Monitor lockups that sometimes occurred when applications accessed the MFP by http. (GFPE#RC10060010) 2. Scan to SMB fails if the file submitted to the DFS folder in the destination and the file of the same name exist in the DFS folder. 3. If Windows Authentication is enabled, printing a large number of copies of a job might take longer than might typically be expected. 4. Chunk Transfer Encoding over an IPP port might results in print jobs being reset. 5. If SSDP = Active (Web Image Monitor > Configuration > Network Security), a high load on the CPU might result in Web Image Monitor locking up. 6. The MFP icon might not be shown in the Windows "Network" dialogue if SSDP is enabled. This affected Windows Vista, 2008/R2, and 7. 7. The device might lose network connectivity if SSDP is enabled. Network connectivity could be temporarily restored after a power cycle. 8. Use of an IP address to send a Scan to SMB might result in the scanned document not being sent. 9. Under very specific combinations of IP address, Subnet Mask, and Gateway address, some of the MFP's network configuration settings might revert to defaults. 10. If the device's IPP Authentication setting is enabled, the driver cannot be installed

**Reissued: 18-Sep-14**

Model: S-C3	Date: 25-Sep-06	No.: RB262005h
Version	Modified Points or Symptom Corrected	
	<p>on Windows 2008 R2 SP1 or 7 SP1 using an IPP port.</p> <ol style="list-style-type: none"> <li>Scan to SMB fails if the both of the following conditions are met. <ul style="list-style-type: none"> <li>Either the device has NBT disabled or it is enabled but the device is unable to resolve the destination's NetBIOS name.</li> <li>One or more octets in the destination's IPv4 address contain leading zeros.</li> </ul> </li> <li>SC991 might occur and network functions could not be used. This occurs if DHCP and DDNS are both enabled in the device and if the DHCP server distributes to the device an FQDN that is more than 127 byte in length.</li> <li>If "CNAME" is specified as the destination folder, Scan to SMB will abort.</li> <li>If NBT is disabled, the destination for Scan to SMB might not be displayed and Windows authentication might fail.</li> <li>Cannot Scan to SMB in Windows 8 <b>and Windows Server 2012</b>.</li> <li>Cannot Scan to SMB in Mac OS X 10.7 or Mac OS X 10.8.</li> </ol>	
6.17	<p>Other changes:</p> <ol style="list-style-type: none"> <li>Unable to Scan to SMB to a destination that is not specified using an FQDN.</li> <li>Unable to Scan to SMB to destinations that are using both LM Authentication and Samba v2.x.</li> <li>Windows Authentication fails if the username or password includes lower-case European characters.</li> <li>The device's SMB timeout was too short (1sec). This caused problems when being used across subnets. For this reason, it has been increased to 10 sec.</li> </ol> <p>Symptom corrected:</p> <ol style="list-style-type: none"> <li>Unable to Scan to SMB to Windows 7 or Windows Server 2008 R2 destinations that have Windows Live ID Sign-in assistant installed.</li> <li>Trying and failing to login to a Scan destination three times might result in the Scanner application stalling.</li> <li>Unable to Scan to SMB to Windows 98/98SE/Me/NT 4.0 destinations specified using an IP address.</li> <li>Unable to retrieve the Windows group name from a Windows 2008 R2 server during Windows Authentication. Because of this, logged in users will only be granted the "Available Functions" specified for them in the Addressbook.</li> <li>The device is unable to assign group privileges to a logged in user if that group has a name consisting of more than 20 bytes. To address this issue, the supported group name length will be increased to 40 bytes.</li> <li>The MFP's Windows Authentication function is unable to use Kerberos when being authenticated on a Windows 2008 or Windows 2008 R2 server. The MFP will still be successfully authenticated because it is able to fail back to NTLMv2.</li> <li>After changing the MFP's DNS server address or Domain name, Scan to SMB destinations specified using a hostname might not be found.</li> <li>The Scan to SMB "Connection Test" fails if performed on directory located directly below a DFS root. Only the "Connection Test" failed, scanning was successful and even the "Connection Test" worked if performed on any sub-directory.</li> <li>The device might return an SC 819 error when browsing the network using SMB. This only occurred if SMB was browsed frequently and the device was not rebooted.</li> <li>If the MFP's IP address is changed to an IP address of another subnet, users will not be able to browse the network (using Scan to SMB) until the MFP is rebooted.</li> </ol>	



**Reissued: 18-Sep-14**

Model: S-C3		Date: 25-Sep-06	No.: RB262005h
Version	Modified Points or Symptom Corrected		
6.16	<p>Symptom corrected:</p> <ol style="list-style-type: none"> <li>1. The MFP's IP address lease renewal request is incorrectly formatted and rejected by DHCP relay agents. This will result in a loss of connectivity that lasts until the MFP reinitializes the network connection (10 seconds).</li> </ol> <p>Other changes:</p> <ol style="list-style-type: none"> <li>1. Scan to Folder destinations located on Windows 7 or Windows Server 2008 R2 can now be selected by browsing.</li> <li>2. The MFP now supports CIFS, DFS and NTLM v2.</li> </ol>		
6.15	<p>Symptom corrected:</p> <ol style="list-style-type: none"> <li>1. Sometimes, the network connection is broken while the machine log is being downloaded using a log download tool.</li> <li>2. Sometimes, an IPP printing job is suddenly cancelled.</li> <li>3. Sometimes, an IPP printing job cannot be performed if the size of the data is a multiple of 8k.</li> </ol>		
6.14	<p>Symptom corrected:</p> <ol style="list-style-type: none"> <li>1. The device will stall if a PCL job is submitted via sftp while the printer spooler (off by default) or sftp spooler (on by default) are stopped.</li> <li>2. Jobs submitted from Mac OS via AppleTalk might result in an error or be discarded completely by the printer.</li> <li>3. The connection to a WLAN might be dropped if the device has been connected for an extended period of time and was authenticated using WPA.</li> <li>4. If WLAN is enabled, an SC991 might be displayed on the Operation Panel if either of the following settings are changed: <ul style="list-style-type: none"> <li>– The Ethernet Speed is changed to any setting except "Auto Select", from the operation panel.</li> <li>– The Communication Mode is changed to "Ad hoc mode" and then User Tools is exited.</li> </ul> </li> <li>5. The Interface Speed in NIB summary will be shown as "Link down" if WLAN is enabled.</li> </ol> <p>Other changes:</p> <ol style="list-style-type: none"> <li>1. The new WLAN card is now available. (TechMail#OTS-2008-543) Note: To use this new card, System firmware (version 1.05 or later), Websys firmware (version 1.06) and NCS firmware (version 6.14 or later) needs to be applied to the device.</li> </ol>		
6.11	<p>Symptom corrected:</p> <ol style="list-style-type: none"> <li>1. The device might be unable to obtain an IP address from a DHCP Server through a DHCP Relay Agent (FPR#RE06110003/RE06110011/RC06120002).</li> <li>2. A 404 error will be returned by WIM after the "Date and time" setting is configured via a Web SmartDeviceMonitor ver.2.x Batch Configuration.</li> <li>3. The device will not be registered with a DNS server by a DHCP relay agent.</li> <li>4. The device fails to renew with the DDNS server, it will not try again.</li> <li>5. IPP clients might not print to devices that joined the network using mDNS (Bonjour).</li> <li>6. SMB folders cannot be registered in the address book. (TechMail#OTS-2007-1913)</li> <li>7. Extra steps are required if a user provides an invalid username or password for Scan to SMB. (TechMail#OTS-2007-1913)</li> <li>8. The performance of WIM might be reduced if SSDP is enabled on the device.</li> </ol>		

**Reissued: 18-Sep-14**

Model: S-C3		Date: 25-Sep-06	No.: RB262005h
Version	Modified Points or Symptom Corrected		
	9. LPR jobs containing an ustatus readback will cause devices to stall if the USB interface is disabled. "Processing" will be displayed in the operation panel. (FPR#RC07050011)		
6.07	Symptom corrected: The device cannot login to Windows Vista via SMB.		
6.06	1st Mass production		

**Reissued: 28-Jun-07**

Model: Stella-C3	Date: 25-Sep-06	No.: RB262007a
------------------	-----------------	----------------

**RTB Reissue**

The items in bold italics have been corrected.

Subject: Firmware Release Note: RFax		Prepared by: M.Ishihara	
From: 1st Tech. Support Sec. Service Support Dept.			
Classification:	<input type="checkbox"/> Troubleshooting <input type="checkbox"/> Part information <input type="checkbox"/> Action required		
	<input type="checkbox"/> Mechanical <input type="checkbox"/> Electrical <input type="checkbox"/> Service manual revision		
	<input type="checkbox"/> Paper path <input type="checkbox"/> Transmit/receive <input type="checkbox"/> Retrofit information		
	<input checked="" type="checkbox"/> Other (       )		

This RTB has been issued to announce the firmware release information for the RFax.

Version	Program No.	Effective Date
<b><i>01.01.00</i></b>	<b><i>B8925524B</i></b>	<b><i>January 2007 production</i></b>
01.00.00	B8925524A	1st Mass production.

Version	Modified Points or Symptom Corrected
<b><i>01.01.00</i></b>	<b><i>Symptom corrected:</i></b> <b><i>1. SC819 (Kernel mismatch error) occurs if IP-FAX is not used for a long time while the Wireless LAN and fax are installed.</i></b>
01.00.00	1st Mass production.

**Reissued: 23-Feb-10**

Model: S-C3	Date: 25-Sep-06	No.: RB262008c
-------------	-----------------	----------------

**RTB Reissue**

The items in bold italics have been added.

Subject: Firmware Release Note: Scanner		Prepared by: M.Ishihara	
From: 2nd Overseas Tech Support Sec., 2nd PQM Dept.			
Classification:	<input type="checkbox"/> Troubleshooting <input type="checkbox"/> Part information <input type="checkbox"/> Action required		
	<input type="checkbox"/> Mechanical <input type="checkbox"/> Electrical <input type="checkbox"/> Service manual revision		
	<input type="checkbox"/> Paper path <input type="checkbox"/> Transmit/receive <input type="checkbox"/> Retrofit information		
	<input checked="" type="checkbox"/> Other (      )		

This RTB has been issued to announce the firmware release information for the Scanner.

Version	Program No.	Effective Date
<b><i>01.04</i></b>	<b><i>B8925525D</i></b>	<b><i>March 2010 production</i></b>
01.03	B8925525C	February 2008 production
01.02	B8925525B	December 2007 production
01.01	B8925525A	1st Mass production.

Version	Modified Points or Symptom Corrected
<b><i>01.04</i></b>	<p><b><i>Symptom corrected:</i></b></p> <ol style="list-style-type: none"> <li><b><i>Scan to NCP fails if all of the following conditions are met:</i></b> <ul style="list-style-type: none"> <li><b><i>The destination is specified using an IP address.</i></b></li> <li><b><i>The Novell server and the device are in different subnets.</i></b></li> <li><b><i>The subnet routers filter SLP multicasts.</i></b></li> </ul> </li> </ol> <p><b><i>Note: Requires System firmware (version 1.07 or later) and Scanner firmware (version 01.04 or later).</i></b></p> <ol style="list-style-type: none"> <li><b><i>Scan to NCP fails or takes a long time to complete if the IPX protocol is used and there are more than 2 Novell Directory Services (NDS) servers in the network hierarchy.</i></b></li> </ol> <p><b><i>Note: Requires System firmware (version 1.07 or later) and Scanner firmware (version 01.04 or later).</i></b></p>
01.03	<p>Symptom corrected:</p> <p>Scan to NCP problems. (TechMail#TS070022)</p> <p>Note: Both System firmware (version 1.05 or later) and Scanner firmware (version 01.03 or later) need to be applied to fix this issue.</p>
01.02	<p>Other changes:</p> <ol style="list-style-type: none"> <li>Supports the Catalan and Turkish languages. For the details of this, please refer to RTB#RB262024 "Supports the Catalan and Turkish languages". Note: To support this feature, install all of the following firmware:           <ul style="list-style-type: none"> <li>System_Copy firmware ver 1.04 or later</li> <li>Printer firmware ver 1.03 or later</li> <li>Websys firmware ver 1.05 or later</li> <li>Scanner firmware ver 01.02 or later</li> <li>Fax firmware ver 02.00.00 or later</li> <li>FCU firmware ver 02.00.00 or later</li> </ul> </li> </ol>

**Reissued: 23-Feb-10**

Model: S-C3		Date: 25-Sep-06	No.: RB262008c
Version	Modified Points or Symptom Corrected		
01.01	1st Mass production.		

**Reissued: 23-Feb-10**

Model: S-C3	Date: 25-Sep-06	No.: RB262009g
-------------	-----------------	----------------

**RTB Reissue**

The items in bold italics have been corrected or added.

Subject: Firmware Release Note: System/Copy		Prepared by: M.Ishihara	
From: 2nd Overseas Tech Support Sec., 2nd PQM Dept.			
Classification:	<input type="checkbox"/> Troubleshooting <input type="checkbox"/> Mechanical <input type="checkbox"/> Paper path <input checked="" type="checkbox"/> Other (      )	<input type="checkbox"/> Part information <input type="checkbox"/> Electrical <input type="checkbox"/> Transmit/receive	<input type="checkbox"/> Action required <input type="checkbox"/> Service manual revision <input type="checkbox"/> Retrofit information

This RTB has been issued to announce the firmware release information for the System/Copy.

Version	Program No.	Effective Date
<b>1.07</b>	<b>B2845521H</b>	<b>February 2010 production</b>
1.06	B2845521G	December 2008 production
1.05	B2845521F	February 2008 production
1.04	B2845521E	December 2007 production
1.03	B2845521D	August 2007 production
1.02	B2845521C	January 2007 production
1.01	B2845521B	November 2006 production
1.00.1	B2845521A	1st Mass production

Version	Modified Points or Symptom Corrected
<b>1.07</b>	<p><b>Symptom corrected:</b></p> <ol style="list-style-type: none"> <li><b>Unable to connect to the network when the MAC address Ricoh vendor code is changed from 00-00-74 to the new address 00-26-73.</b></li> <li><b>Scan to NCP fails if all of the following conditions are met:</b> <ul style="list-style-type: none"> <li><b>The destination is specified using an IP address.</b></li> <li><b>The Novell server and the device are in different subnets.</b></li> <li><b>The subnet routers filter SLP multicasts.</b></li> </ul> </li> </ol> <p><b>Note: Requires System firmware (version 1.07 or later) and Scanner firmware (version 01.04 or later).</b></p> <ol style="list-style-type: none"> <li><b>Scan to NCP fails or takes a long time to complete if the IPX protocol is used and there are more than 2 Novell Directory Services (NDS) servers in the network hierarchy.</b></li> </ol> <p><b>Note: Requires System firmware (version 1.07 or later) and Scanner firmware (version 01.04 or later).</b></p>
1.06	<p>The following @Remote-related corrections/changes were made:</p> <p>An error occurs during RFU.</p> <p>(IMH): Lines are visible in the printer data (original).</p> <p>Several emails are sent confirming successful ordering of machine consumables.</p> <p>Some changes to the display were made.</p> <p>Some changes were made to the descriptions for error codes related to Cumin-N firmware update.</p>
1.05	<p>Symptom corrected:</p> <ol style="list-style-type: none"> <li>Scan to NCP problems. (TechMail#TS070022)</li> </ol>

**Reissued: 23-Feb-10**

Model: S-C3		Date: 25-Sep-06	No.: RB262009g
Version	Modified Points or Symptom Corrected		
	<p>Note: Both System firmware (version 1.05 or later) and Scanner firmware (version 01.03 or later) need to be applied to fix this issue.</p> <p>2. IPv6 Type 0 Route Headers allow sender to control routing (CVE-2007-2242) (TechMail#TS080184)</p> <p>Other changes:</p> <p>1. The new WLAN card is now available. (TechMail#OTS-2008-543)  Note: To use this new card, System firmware (version 1.05 or later), Websys firmware (version 1.06 or later) and NCS firmware (version 6.14 or later) needs to be applied to the device.</p>		
1.04	<p>Other changes:</p> <p>1. Supports the Catalan and Turkish languages.  For the details of this, please refer to RTB#RB262024 "Supports the Catalan and Turkish languages".  Note: To support this feature, install all of the following firmware:</p> <ul style="list-style-type: none"> <li>- System_Copy firmware ver 1.04 or later</li> <li>- Printer firmware ver 1.03 or later</li> <li>- Websys firmware ver 1.05 or later</li> <li>- Scanner firmware ver 01.02 or later</li> <li>- Fax firmware ver 02.00.00 or later</li> <li>- FCU firmware ver 02.00.00 or later</li> </ul>		
1.03	<p>Symptom corrected:</p> <p>1. Entries such as "usercode/username" in the Job Log or Access Log, might be shown incorrectly in Web SmartDeviceMonitor ver 2.x. This only occurs if there are a large number of entries.</p> <p>2. Device might not be able to access the network under the following conditions (FPR#RC07050005):</p> <ul style="list-style-type: none"> <li>- The device is connected to a HUB that has link flapping enabled.</li> <li>- The device "Ethernet speed" is not "Auto".</li> </ul> <p>3. Accessing the document server in WIM via a single sign-on server might result in "404 Not Found". This only happens if the url used to access WIM contains a "Host Name" and "Domain Name" (The "domain name" setting in the MFP is not blank.). It does not happen if the url contains an IP address.</p> <p>Note: To fix this issue, all of the following firmware must be applied:</p> <ul style="list-style-type: none"> <li>- System firmware ver 1.03 or later</li> <li>- Websys firmware ver 1.04 or later</li> <li>- NFA firmware ver 2.04 or later</li> <li>- Printer firmware ver 1.02 or later</li> </ul> <p>4. The "Custom size" setting does not appear among the Bypass Tray settings.</p> <p>5. The System Settings and SP mode cannot be accessed on an embedded RC Gate-registered device if the device's controller board is replaced.</p> <p>6. The Gateway cannot communicate with the embedded RC Gate.</p>		
1.02	<p>Symptom corrected:</p> <p>1. Translation errors.</p> <p>2. The device is unable to follow an LDAP search reference if the device and LDAP server are communicating via SSL. This problem affects the following functions:</p> <ul style="list-style-type: none"> <li>- LDAP Search</li> </ul>		

**Reissued: 23-Feb-10**

Model: S-C3		Date: 25-Sep-06	No.: RB262009g
Version	Modified Points or Symptom Corrected		
	<ul style="list-style-type: none"><li>- LDAP Connection Test</li><li>- LDAP Authentication</li><li>- Windows Authentication</li></ul> <ol style="list-style-type: none"><li>3. SC997 might be displayed on the operation panel when a user logs in using Windows or LDAP Authentication.</li></ol>		
1.01	<ol style="list-style-type: none"><li>1. The FAX function cannot be started after the controller is reset.</li><li>2. "Please wait" cannot be cleared after the machine recovers from Energy Saver mode.</li><li>3. Supports Day Light Savings Time. The default values for the following SP modes were changed (NA version only):<ul style="list-style-type: none"><li>• SP5307-003: 0x03200210</li><li>• SP5307-004: 0x11100200</li></ul></li></ol>		
1.00.1	1st Mass production.		



**Reissued: 14-Feb-08**

Model: Stella-C3	Date: 25-Sep-06	No.: RB262010c
------------------	-----------------	----------------

**RTB Reissue**

The items in bold italics have been added.

Subject: Firmware Release Note: Web System		Prepared by: M.Ishihara	
From: 1st Tech. Support Sec. Service Support Dept.			
Classification:	<input type="checkbox"/> Troubleshooting <input type="checkbox"/> Part information <input type="checkbox"/> Action required		
	<input type="checkbox"/> Mechanical <input type="checkbox"/> Electrical <input type="checkbox"/> Service manual revision		
	<input type="checkbox"/> Paper path <input type="checkbox"/> Transmit/receive <input type="checkbox"/> Retrofit information		
	<input checked="" type="checkbox"/> Other (      )		

This RTB has been issued to announce the firmware release information for the Web System.

Version	Program No.	Effective Date
<b>1.06</b>	<b>B8925527D</b>	<b>February 2008 production</b>
1.05	B8925527C	December 2007 production
1.04	B8925527B	August 2007 production
1.03	B8925527A	1st Mass production.

Version	Modified Points or Symptom Corrected
<b>1.06</b>	<p><b>Symptom corrected:</b></p> <ol style="list-style-type: none"> <li><b><i>The error message "Method Not Allowed" might be displayed in the web browser of a client that clicks a link in WIM's "To Link Page" page.</i></b></li> <li><b><i>Logged in users can change WIM's "Configuration &gt; System&gt; Device Name" setting without being granted the necessary privileges.</i></b></li> </ol> <p><b>Other changes:</b></p> <ol style="list-style-type: none"> <li><b><i>The new WLAN card is now available. (TechMail#OTS-2008-543)</i></b>  <b><i>Note: To use this new card, System firmware (version 1.05 or later), Websys firmware (version 1.06 or later) and NCS firmware (version 6.14 or later) needs to be applied to the device.</i></b></li> </ol>
1.05	<p>Other changes:</p> <ol style="list-style-type: none"> <li>Supports the Catalan and Turkish languages.            For the details of this, please refer to RTB#RB262024 "Supports the Catalan and Turkish languages".            Note: To support this feature, install all of the following firmware:           <ul style="list-style-type: none"> <li>System_Copy firmware ver 1.04 or later</li> <li>Printer firmware ver 1.03 or later</li> <li>Websys firmware ver 1.05 or later</li> <li>Scanner firmware ver 01.02 or later</li> <li>Fax firmware ver 02.00.00 or later</li> <li>FCU firmware ver 02.00.00 or later</li> </ul> </li> </ol>

**Reissued: 14-Feb-08**

Model: Stella-C3		Date: 25-Sep-06	No.: RB262010c
Version	Modified Points or Symptom Corrected		
1.04	<p>Symptom corrected:</p> <ol style="list-style-type: none"><li>1. Accessing the document server in WIM via an single sign-on server might result in "404 Not Found". This only happens if the url used to access WIM contains a "Host Name" and "Domain Name" (The "domain name" setting in the MFP is not blank.). It does not happen if the url contains an IP address. Note: To fix this issue, all of the following firmware must be applied:<ul style="list-style-type: none"><li>- System firmware ver 1.03 or later</li><li>- Websys firmware ver 1.04 or later</li><li>- NFA firmware ver 2.04 or later</li><li>- Printer firmware ver 1.02 or later</li></ul></li><li>2. WebImageMonitor contained wording errors in Traditional Chinese or Simplified Chinese.</li><li>3. WebImageMonitor contained number errors in Russian.<ul style="list-style-type: none"><li>- "Tray 2" was shown as "Tray 3".</li></ul></li><li>4. The XSS vulnerability on WIM. (TechMail#OTS-2007-2118)</li><li>5. WebImageMonitor contained wording errors.<ul style="list-style-type: none"><li>- "IPv4" was shown as "IPv5" in Russian.</li><li>- "IPv6" was shown as "IPv7" in Russian.</li><li>- "Type de papier standard" was shown as "Type de papier utilisateur" in French.</li><li>- "RC Gate Firmware bijwerken" was shown as "RS Gate Firmware bijwerken" in Dutch.</li></ul></li><li>6. Using WebImageMonitor in the Safari browser, address book back-up files cannot be downloaded.</li></ol>		
1.03	1st Mass production.		

Model: Stella-C3	Date: 08-Nov-06	No.: RB262011
------------------	-----------------	---------------

Subject: Firmware Release Note: Engine(GW)		Prepared by: M. Ishihara	
From: 1st Tech. Support Sec. Service Support Dept.			
Classification:	<input type="checkbox"/> Troubleshooting	<input type="checkbox"/> Part information	<input type="checkbox"/> Action required
	<input type="checkbox"/> Mechanical	<input type="checkbox"/> Electrical	<input type="checkbox"/> Service manual revision
	<input type="checkbox"/> Paper path	<input type="checkbox"/> Transmit/receive	<input type="checkbox"/> Retrofit information
	<input checked="" type="checkbox"/> Other (      )		

This RTB has been issued to announce the firmware release information for the **Engine (GW)**.

## ASIA

Version	Program No.	Effective Date
0.25	B2625533A-B2625540B	1st Mass production.

## US\_EU

Version	Program No.	Effective Date
0.25	B2625531D-B2625540B	1st Mass production.

## ASIA

Version	Modified Points or Symptom Corrected
0.25	1st Mass production.

## US\_EU

Version	Modified Points or Symptom Corrected
0.25	1st Mass production.

**Reissued: 29-Sep-08**

Model: Stella-C3	Date: 27-Nov-06	No.: RB262012d
------------------	-----------------	----------------

**RTB Reissue**

Item No. 2 was deleted (Printer function will function).

Subject: Firmware Release Note: Printer/Scanner		Prepared by: M.Ishihara	
From: 1st Tech. Support Sec. Service Support Dept.			
Classification:	<input type="checkbox"/> Troubleshooting <input type="checkbox"/> Mechanical <input type="checkbox"/> Paper path <input checked="" type="checkbox"/> Other (      )	<input type="checkbox"/> Part information <input type="checkbox"/> Electrical <input type="checkbox"/> Transmit/receive	<input type="checkbox"/> Action required <input type="checkbox"/> Service manual revision <input type="checkbox"/> Retrofit information

This RTB has been issued to announce the Printer/Scanner firmware release history for models without the NIC.

Version	Program No.	Effective Date
<b>1.24</b>	<b>B8805572F</b>	<b>October 2008 production</b>
1.23	B8805572E	April 2008 production
1.20	B8805572D	January 2007 production
1.18	B8805572C	1st Mass production.

Version	Modified Points or Symptom Corrected
<b>1.24</b>	<b>Symptom corrected:</b> <b>1. When the display language is set to Russian, the LCD contents are displayed in Turkish.</b> <b>2. When the display language is set to Norwegian, the LCD contents are displayed in Catalanian.</b>
1.23	The firmware is now WHQL-certified for Windows Vista. Note: To do this, the USB serial number was set to a unique number.
1.20	Symptom corrected. An extra blank page is added to the end of duplex jobs with an odd number of pages.  Important: 1. To fix this symptom, install this firmware version (or newer) AND update the driver to ver0.22 or newer. 2. <del>If you only upgrade the firmware (and not the driver), the printer function will not work.</del>
1.18	1st Mass production.

**Reissued: 29-Sep-08**

Model: Stella-C3	Date: 27-Nov-06	No.: RB262013d
------------------	-----------------	----------------

**RTB Reissue**

Item No. 2 was deleted (Printer function will function).

Subject: Firmware Release Note: Printer/Scanner		Prepared by: M.Ishihara	
From: 1st Tech. Support Sec. Service Support Dept.			
Classification:	<input type="checkbox"/> Troubleshooting <input type="checkbox"/> Mechanical <input type="checkbox"/> Paper path <input checked="" type="checkbox"/> Other (      )	<input type="checkbox"/> Part information <input type="checkbox"/> Electrical <input type="checkbox"/> Transmit/receive	<input type="checkbox"/> Action required <input type="checkbox"/> Service manual revision <input type="checkbox"/> Retrofit information

This RTB has been issued to announce the Printer/Scanner firmware release history for models with the NIC.

Version	Program No.	Effective Date
<b>1.24</b>	<b>B8805571F</b>	<b>October 2008 production</b>
1.23	B8805571E	April 2008 production
1.20	B8805571D	January 2007 production
1.18	B8805571C	1st Mass production.

Version	Modified Points or Symptom Corrected
<b>1.24</b>	<b>Symptom corrected:</b> <b>1. When the display language is set to Russian, the LCD contents are displayed in Turkish.</b> <b>2. When the display language is set to Norwegian, the LCD contents are displayed in Catalanian.</b>
1.23	The firmware is now WHQL-certified for Windows Vista. Note: To do this, the USB serial number was set to a unique number.
1.20	Symptom corrected. An extra blank page is added to the end of duplex jobs with an odd number of pages.  Important: 1. To fix this symptom, install this firmware version (or newer) AND update the driver to ver0.22 or newer. 2. <del>If you only upgrade the firmware (and not the driver), the printer function will not work.</del>
1.18	1st Mass production.

**Reissued: 04-Feb-09**

Model: Stella-C3	Date: 1-Dec-06	No.: RB262014a
------------------	----------------	----------------

Subject: Firmware Release Note: PS3/PDF		Prepared by: M. Ishihara	
From: 1st Tech. Support Sec. Service Support Dept.			
Classification:	<input type="checkbox"/> Troubleshooting	<input type="checkbox"/> Part information	<input type="checkbox"/> Action required
	<input type="checkbox"/> Mechanical	<input type="checkbox"/> Electrical	<input type="checkbox"/> Service manual revision
	<input type="checkbox"/> Paper path	<input type="checkbox"/> Transmit/receive	<input type="checkbox"/> Retrofit information
	<input checked="" type="checkbox"/> Other (       )		

This RTB has been issued to announce the PS3/PDF firmware release history for GW models.

Version	Program No.	Effective Date
<b>1.01</b>	<b><i>D3235105B</i></b>	<b><i>August 2008 production</i></b>
1.00	D3235105A	1st Mass production

Version	Modified Points or Symptom Corrected
<b>1.01</b>	<b><i>Symptom corrected: Some pages of a duplex job are printed out as single-sided sheets.</i></b>
1.00	1st Mass production

**Reissued: 30-Jul-08**

Model: Stella-C3	Date: 01-Dec-06	No.: RB262015d
------------------	-----------------	----------------

**RTB Reissue**

The items in bold italics have been added.

Subject: Firmware Release Note: Engine(GW) (BICU-SD)		Prepared by: M. Ishihara	
From: 1st Tech. Support Sec. Service Support Dept.			
Classification:	<input type="checkbox"/> Troubleshooting	<input type="checkbox"/> Part information	<input type="checkbox"/> Action required
	<input type="checkbox"/> Mechanical	<input type="checkbox"/> Electrical	<input type="checkbox"/> Service manual revision
	<input type="checkbox"/> Paper path	<input type="checkbox"/> Transmit/receive	<input type="checkbox"/> Retrofit information
	<input checked="" type="checkbox"/> Other ( )		

This RTB has been issued to announce the firmware release information for the Engine (GW) (BICU-SD).

Version	Program No.	Effective Date
<b><i>0.29</i></b>	<b><i>B2625540F</i></b>	<b><i>Aug/08 production</i></b>
0.28	B2625540E	Mar/08 production
0.27	B2625540D	Sep/07 production
0.26	B2625540C	Feb/07 Production
0.25	B2625540B	1 <sup>st</sup> Mass production.

Version	Modified Points or Symptom Corrected
<b><i>0.29</i></b>	<b><i>Symptom corrected: SC142 (SBU white/black level correction error)</i></b>
0.28	Error correction: "Replace Photoconductor" alarm does not work on the S-C3 Fax and Printer/Scanner/Fax models.
0.27	Symptom corrected: 1. White spots appear on the image.
0.26	1. Part of the trailing edge was not printed on over 420mm length copy using the by-pass feed table when the machine starts from the sleep mode.
0.25	1st Mass production.

Model: Stella-C3	Date: 20-Dec-06	No.: RB262016
------------------	-----------------	---------------

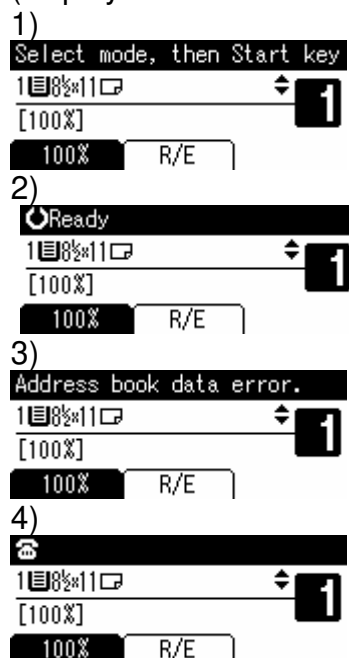
Subject: SD card pops out		Prepared by: M. Ishihara	
From: 1st Tech. Support Sec. Service Support Dept.			
Classification:	<input checked="" type="checkbox"/> Troubleshooting <input type="checkbox"/> Mechanical <input type="checkbox"/> Paper path <input type="checkbox"/> Other (      )	<input type="checkbox"/> Part information <input type="checkbox"/> Electrical <input type="checkbox"/> Transmit/receive	<input type="checkbox"/> Action required <input type="checkbox"/> Service manual revision <input type="checkbox"/> Retrofit information

## SYMPTOM

The following is displayed when the power is turned ON.

**Note:** This only occurs on some CF and CPSF models.

Screen samples #1-4 shown below are displayed in order, and then #2-4 are displayed (display interval: 3.5 sec).



## CAUSE

The cover for the Fax or Printer/Scanner SD card was pressed by mistake (at the factory in some cases). As a result, the SD card comes loose.



Model: Stella-C3

Date: 20-Dec-06

No.: RB262016

**SOLUTION****Production line:**

1. Temporary: Two rubber pads (P/N B2621258) were added between the card cover and GW controller, so that the card does not come loose if the cover is pressed.
2. Permanent: The shape of the card cover was changed so that the card does not come loose if the cover is pressed.

**Applied from:** January 2007 production**In the field:**

Re-install the SD card.

Model: Model S-C3		Date: 19-Feb-07	No.: RB262017
Subject: Service Manual Correction		Prepared by: Y.Murata	
From: 1st Tech. Support Sec. Service Support Dept.			
Classification:	<input type="checkbox"/> Troubleshooting <input type="checkbox"/> Mechanical <input type="checkbox"/> Paper path <input type="checkbox"/> Product Safety	<input type="checkbox"/> Part information <input type="checkbox"/> Electrical <input type="checkbox"/> Transmit/receive <input type="checkbox"/> Other (     )	<input type="checkbox"/> Action required <input checked="" type="checkbox"/> Service manual revision <input type="checkbox"/> Retrofit information

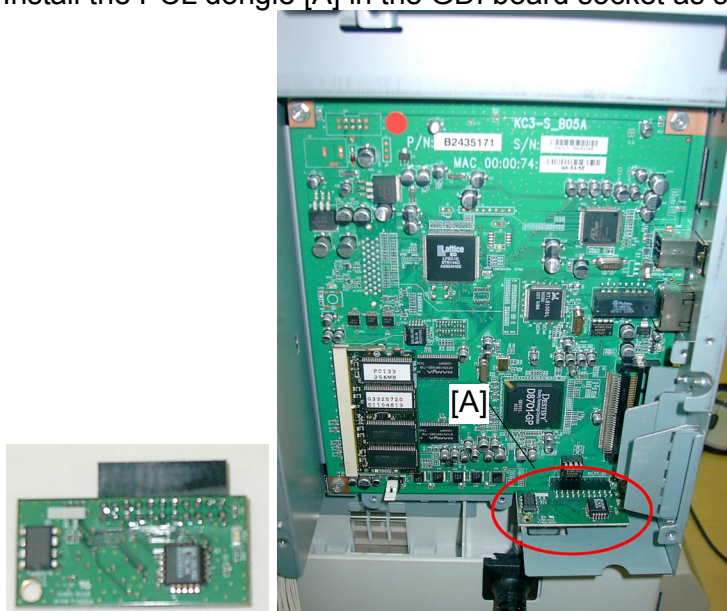
The Service Manual was changed as follows.

**Add** the following procedure:

## INSTALLATION OF PCL-Option

### Installation Procedure

1. Turn off the main power switch of the machine.
2. Remove the rear cover of the machine.
3. Remove the GDI box cover.
4. Install the PCL dongle [A] in the GDI board socket as shown below.

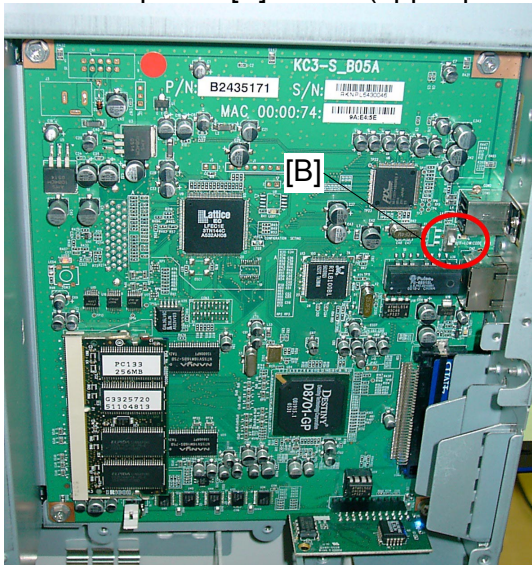


Model: Model S-C3

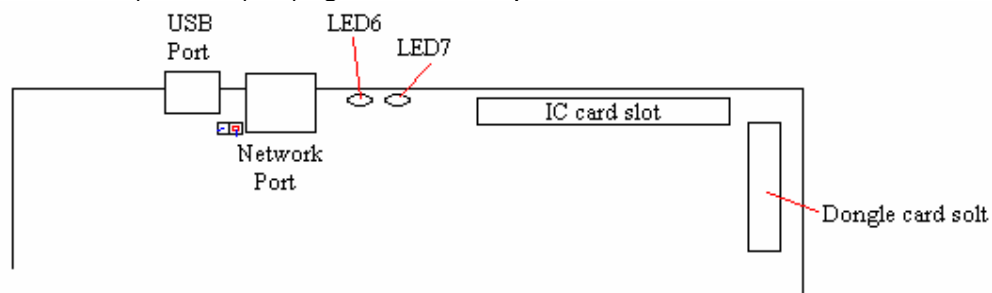
Date: 19-Feb-07

No.: RB262017

5. Turn on DipSW2 [B] switch (upper position).



6. Remove the cover of the IC card slot on the GDI controller board.
7. Install the PCL IC card in the IC card slot.  
**NOTE1:** 1) Download the firmware to your IC card from your firmware download site  
2) Part number of the firmware is B8955500.
8. Turn on the main power switch.  
**NOTE2:** 1) LED7 (orange) blinks during this installation.  
2) LED6 (red) lights after completion of this installation.



9. Turn off the main power switch after completing the installation.
10. Turn off the Dip SW2 (lower position).
11. Remove the IC card.
12. Turn on the main power switch.
13. Output the "Config. Page" (UserTool > Printer Features > List/Test Print > Config. Page) and confirm if PCL option is correctly installed.

Model: Model S-C3		Date: 20-Feb-07	No.: RB262018
Subject: SC929, Paper Jams, or intermittent lines		Prepared by: Y.Yoshida	
From: 1st Tech. Support Sec. Service Support Dept.			
Classification:	<input checked="" type="checkbox"/> Troubleshooting <input type="checkbox"/> Mechanical <input type="checkbox"/> Paper path <input type="checkbox"/> Other (      )	<input type="checkbox"/> Part information <input type="checkbox"/> Electrical <input type="checkbox"/> Transmit/receive	<input type="checkbox"/> Action required <input type="checkbox"/> Service manual revision <input type="checkbox"/> Retrofit information

## Symptom

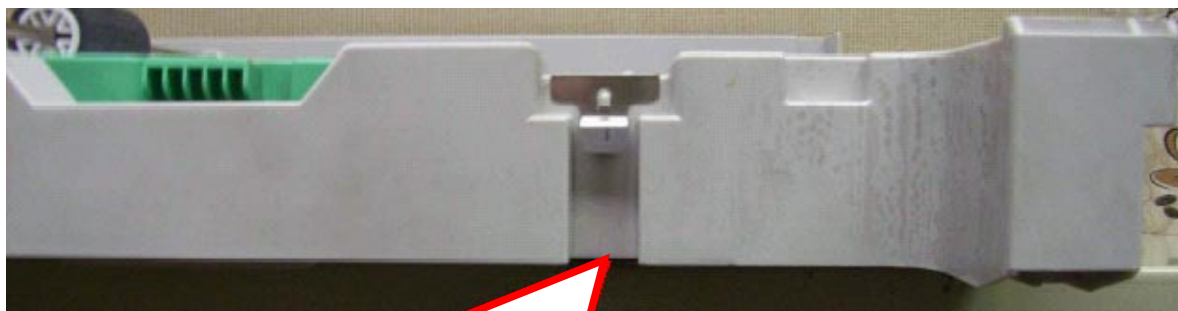
- SC929 occurs
- Paper jams
- Intermittent digital lines appear on copies

## Cause

Electrical noise is being generated and it causes image control to function incorrectly. The possible symptoms caused by the electrical noise are SC929s, paper jams, and intermittent digital lines on copies. Static electricity is the source of this electrical noise.

## Solution

One or both grounding plates on the bottom of the main body paper cassette may not be making proper contact. Reform or replace the grounding plates so that they make proper electrical contact.



### B0442709/ B2622709

#### REAR VIEW OF THE CASSETTE

Reform the grounding plate out and away from the cassette so it makes proper contact with the main body of the machine. Make sure that the contact on the machine side and this grounding plate are clean and grease free.

Model: Model S-C3

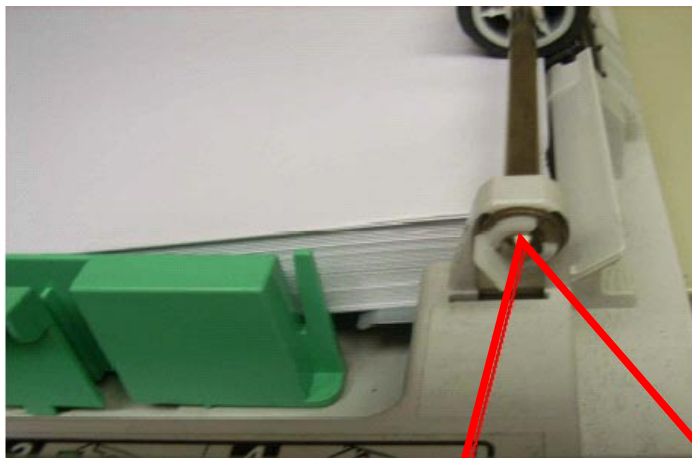
Date: 20-Feb-07

No.: RB262018

**B0442711/ B2622711****Bottom View of Cassette**

The above photograph is showing the front bottom view of the cassette.

Make sure to form the grounding plate to the rear so that it makes contact with the bottom machine frame.

**B0442711/ B2622711****Front Top View of Cassette**

Be sure that the grounding plate and the shaft are clean and grease free.

**Reissued: 29-Sep-08**

Model: Stella-C3 (Kir-C3) PCL Option for GDI models	Date: 21-Feb-07	No.: RB262019b
---	-----------------	----------------

**RTB Reissue**

The items in bold italics have been added.

Subject: Firmware Release Note: GDI CTL for PCL		Prepared by: M. Ishihara	
From: 1st Tech. Support Sec. Service Support Dept.			
Classification:	<input type="checkbox"/> Troubleshooting <input type="checkbox"/> Part information <input type="checkbox"/> Action required		
	<input type="checkbox"/> Mechanical <input type="checkbox"/> Electrical <input type="checkbox"/> Service manual revision		
	<input type="checkbox"/> Paper path <input type="checkbox"/> Transmit/receive <input type="checkbox"/> Retrofit information		
	<input checked="" type="checkbox"/> Other (      )		

This RTB has been issued to announce the firmware release information for the GDI Controller with NIC models for the Kir-C3 and Stella-C3 when PCL option is installed. We released the firmware with the Kir-C3 RTB RB245022.

**IMPORTANT:**

1. This RTB is the release note for version 5.52.
2. With this RTB, the format of the firmware version name was corrected (incorrect: "0.xx", correct: "5.xx").

Version	Program No.	Effective Date
<b>5.52</b>	<b><i>B8955500C</i></b>	<b><i>October 2008 production</i></b>
5.51	B8955500B	April 2008 production
5.46	B8955500A	December 2007 production
5.45	B8955500	1st Mass Production.

Version	Modified Points or Symptom Corrected
<b>5.52</b>	<b><i>Symptom corrected:</i></b> <b><i>1. When the display language is set to Russian, the LCD contents are displayed in Turkish.</i></b> <b><i>2. When the display language is set to Norwegian, the LCD contents are displayed in Catalanian.</i></b>
5.51	Symptom corrected: 1. To receive WHQL certification for Windows Vista, a unique USB serial number has been assigned to each device.  Following symptoms have been corrected: 1. No response to SNMP 'get-request' from the MFP. SC692 occurs when printing specific MS Powerpoint files with PCL6 driver.
5.46	Symptom corrected: 1. Kir-C3-GDI: Printing speed is slower when printing a PDF file with Print as Image (ON) using a PCL6 driver. 2. Display error: [User Tools]->[PCL Menu]->[Font Number].
5.45	1st Mass Production.

Model: Model S-C3		Date: 16-Mar-07	No.: RB262020
Subject: Service Manual Correction		Prepared by:Y.Yoshida	
From: 1st Tech. Support Sec. Service Support Dept.			
Classification:	<input type="checkbox"/> Troubleshooting <input type="checkbox"/> Mechanical <input type="checkbox"/> Paper path <input type="checkbox"/> Product Safety	<input type="checkbox"/> Part information <input type="checkbox"/> Electrical <input type="checkbox"/> Transmit/receive <input type="checkbox"/> Other (     )	<input type="checkbox"/> Action required <input checked="" type="checkbox"/> Service manual revision <input type="checkbox"/> Retrofit information

The Service Manual was changed as follows.

**Add** the following procedure:

## Installation Procedure for the Key Counter (Card) Interface Type A (20 pins)

### Necessary Parts

BRACKET:MKB                      B2621310  
 SCREW:M3X6                      03530060N  
 CLAMP:LWS-0711Z              11050508  
 MKB (bridge board)

### Main Procedure

1. Remove the rear cover.
2. Remove the cut-out in the rear cover (circled in red in the photo).



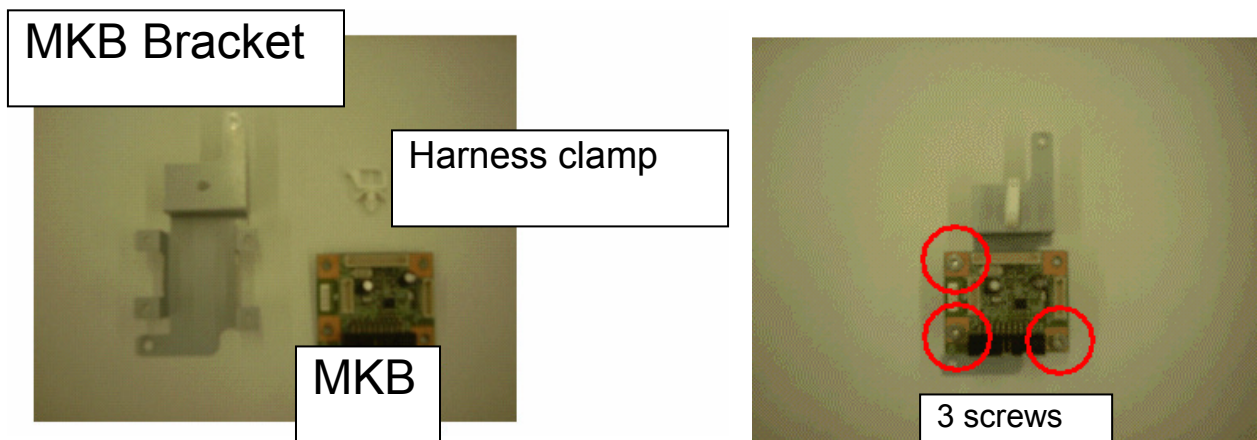


Model: Model S-C3

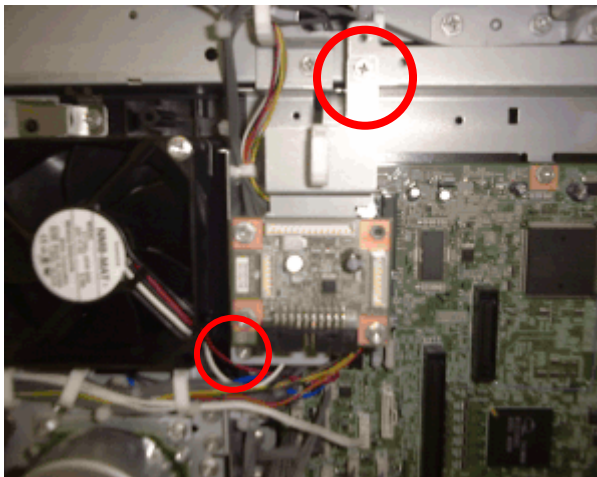
Date: 16-Mar-07

No.: RB262020

3. Attach the MKB bracket and harness clamp to the MKB (3 screws).



4. Attach the MKB + bracket to the copier (2 screws).



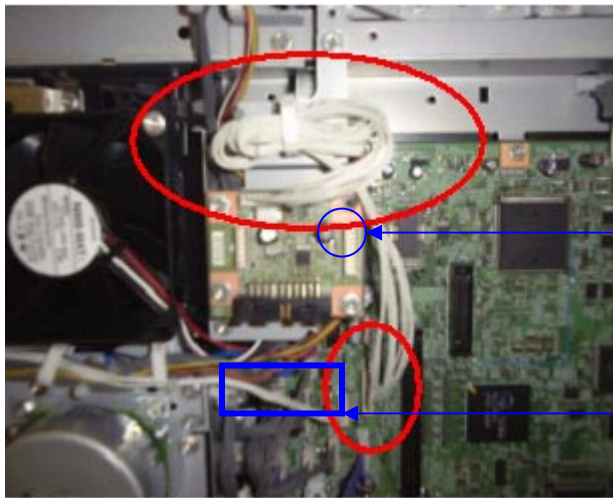
5. Connect one end of the MKB harness to **CN3** (13 pins) on the **MKB**.
6. Connect the other end of the MKB harness to **CN149** (13 pins) on the **BICU**.



Model: Model S-C3

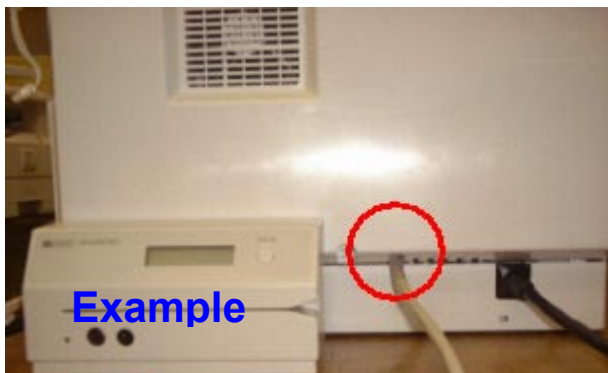
Date: 16-Mar-07

No.: RB262020


Screw for grounding line of  
vendor's harness (if needed)

**CN4** (20 pins) for connection of  
vendor's harness

7. Connect the vendor's harness for the external key counter device to **CN4** (20 pins) on the **MKB**.
8. Reattach the rear cover.  
**Important:** Pass the vendor's harness through the cut-out hole from Step 2.



Model: Model S-C3		Date: 15-May-07	No.: RB262021
Subject: Countermeasure for the duplex printing error		Prepared by: Y.Murata	
From: 1st Tech. Support Sec. Service Support Dept.			
Classification:	<input type="checkbox"/> Troubleshooting <input type="checkbox"/> Mechanical <input type="checkbox"/> Paper path <input type="checkbox"/> Product Safety	<input type="checkbox"/> Part information <input type="checkbox"/> Electrical <input type="checkbox"/> Transmit/receive <input checked="" type="checkbox"/> Other (     )	<input type="checkbox"/> Action required <input type="checkbox"/> Service manual revision <input type="checkbox"/> Retrofit information

## SYMPTOM

If a duplex job has an odd number of pages, the counter increments by one extra page. For example, if the duplex job has 3 pages of data, the machine will count this as 4 pages.

**Note:** This does not occur when using a PCL driver for DDST.

## CAUSE

The counting specifications for duplex jobs with an odd number of pages were not included in the firmware.

## SOLUTION

On the affected machines listed below, update the DDST controller firmware **and** DDST printer driver to the following versions:

DDST controller firmware: **Ver 1.20 or later**

DDST printer driver: **Ver 0.22 or later**

### Procedure:

1. Check the DDST controller firmware version (Sp7801). If the version is 1.18, update to **Ver 1.20 or later**.

**Note:** This firmware is installed on the controller boards listed on the next page.

2. Check the DDST printer driver version. If the version is ver 0.20d or before, request the customer to update to DDST printer driver **Ver 0.22 or later**.

**Note:** This driver is installed on CD **Ver 0.3 or later**.

**Important:** To fix this symptom, you need to update **both the DDST controller firmware and DDST printer driver**. If you do not, the machine can print but the symptom will still occur.

Model: Model S-C3	Date: 15-May-07	No.: RB262021
-------------------	-----------------	---------------

The new firmware is installed on controller boards from the following P/N:

**Note:** The suffix is printed on the board, as shown in the photo.

New Part Number	Description	Q'ty	Int	Page	Index	Note
B8805172D or later	PCB:NC4-S:GDI-BASIC	1	X/O	3	2	
B8805171D or later	PCB:NC4-S:GDI-NOB	1	X/O	3	2	



## CUT-IN SERIAL NUMBERS

The new controller firmware is installed on the controller from the first machine of April 2007 production

Model Code	Cut-in Serial Number
B280-26	8X18270001
B293-26	8X28270001
B280-29	L9878600001
B280-67	
B293-67	M0378600001
B880-15	M0578600001
B880-17	
B880-67	
B893-67	M0778600001

**Reissued: 23-Jan-08**

Model: Stella-C3	Date: 5-Jul-07	No.: RB262022a
------------------	----------------	----------------

**RTB Reissue**

The items in ***bold italics*** have been added.

Subject: Firmware Release Note: Security Module		Prepared by: M. Ishihara	
From: 1st Tech. Support Sec. Service Support Dept.			
Classification:	<input type="checkbox"/> Troubleshooting <input type="checkbox"/> Part information <input type="checkbox"/> Action required		
	<input type="checkbox"/> Mechanical <input type="checkbox"/> Electrical <input type="checkbox"/> Service manual revision		
	<input type="checkbox"/> Paper path <input type="checkbox"/> Transmit/receive <input type="checkbox"/> Retrofit information		
	<input checked="" type="checkbox"/> Other (       )		

This RTB has been issued to announce the Security Module firmware release history for model S-C3.

Version	Program No.	Effective Date
<b><i>1.02</i></b>	<b><i>B2845523A</i></b>	<b><i>February 2007 production</i></b>
1.01	B2845523	1st Mass production.

Version	Modified Points or Symptom Corrected
<b><i>1.02</i></b>	<b><i>Symptom corrected:</i></b> <b><i>1. An SSL2.0 client code fails to properly check for NULL (CVE-2006-4343). (TechMail#OTS-2008-185)</i></b> <b><i>2. Multiple RSA implementations fail to properly handle signatures (CVE-2006-4339). (TechMail#OTS-2008-276).</i></b>
1.01	1st Mass production.

Model: Stella-C3 and Stella-F	Date: 21-Nov-07	No.: RB262023
-------------------------------	-----------------	---------------

Subject: Developer leakage from PCU		Prepared by: M. Ishihara	
From: 1st Tech. Support Sec. Service Support Dept.			
Classification:	<input type="checkbox"/> Troubleshooting <input type="checkbox"/> Mechanical <input type="checkbox"/> Paper path <input type="checkbox"/> Other (      )	<input type="checkbox"/> Part information <input type="checkbox"/> Electrical <input type="checkbox"/> Transmit/receive	<input checked="" type="checkbox"/> Action required <input type="checkbox"/> Service manual revision <input type="checkbox"/> Retrofit information

## Symptom

During the installation of a new machine, developer leaks out of the PCU.

**Note:** This is estimated to occur on only 2.3% of the Affected Units listed below.

## Cause

The PG (photoconductor gap) is too narrow, causing the development seal to peel off.

This is caused by one or more of the following:

- The position of the slotted hole in the PCU front cover was incorrect
- The position of the plastic rod on the PCU front side plate was incorrect
- The PCU front side plate was not fixed to the PCU base completely. As a result, a gap was created between the front side plate and the PCU base.

## Solution

### Production line

The PCU assembly process was modified as follows:

- A step was added to ensure that there is no gap between the front side plate and PCU base.
- The plastic rod on the PCU front side plate will be removed (cut).

**Note:** As mentioned below, there is no side effect created by removing this rod from the PCU. This is true for both normal PCUs and affected PCUs.

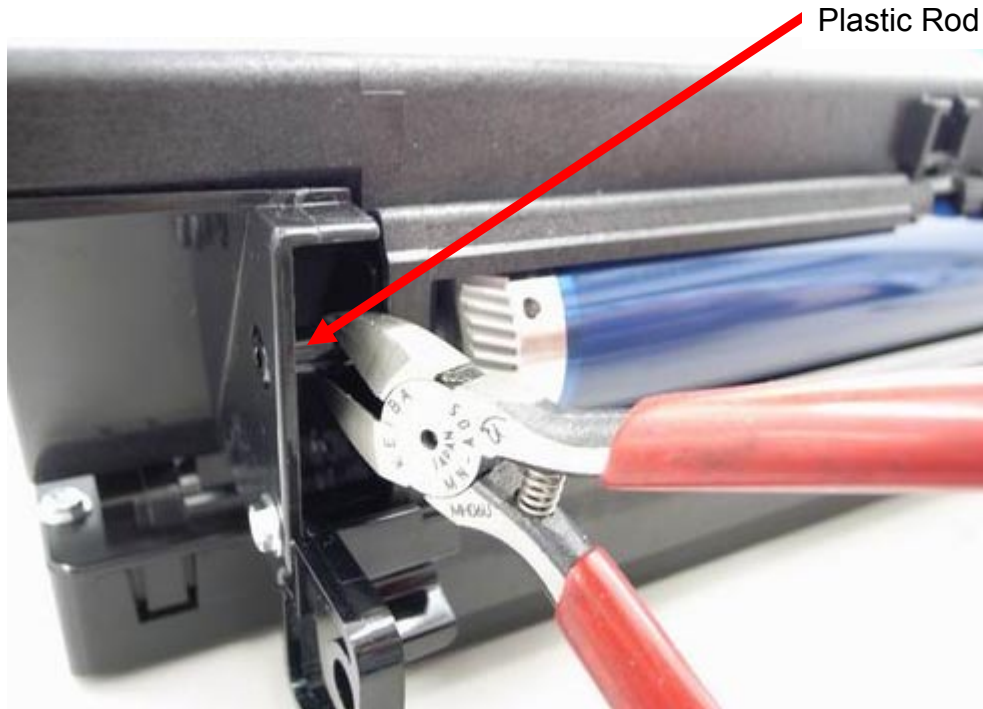
### In the field

Do the following procedure when you install a new machine mentioned in the Affected Units list below.

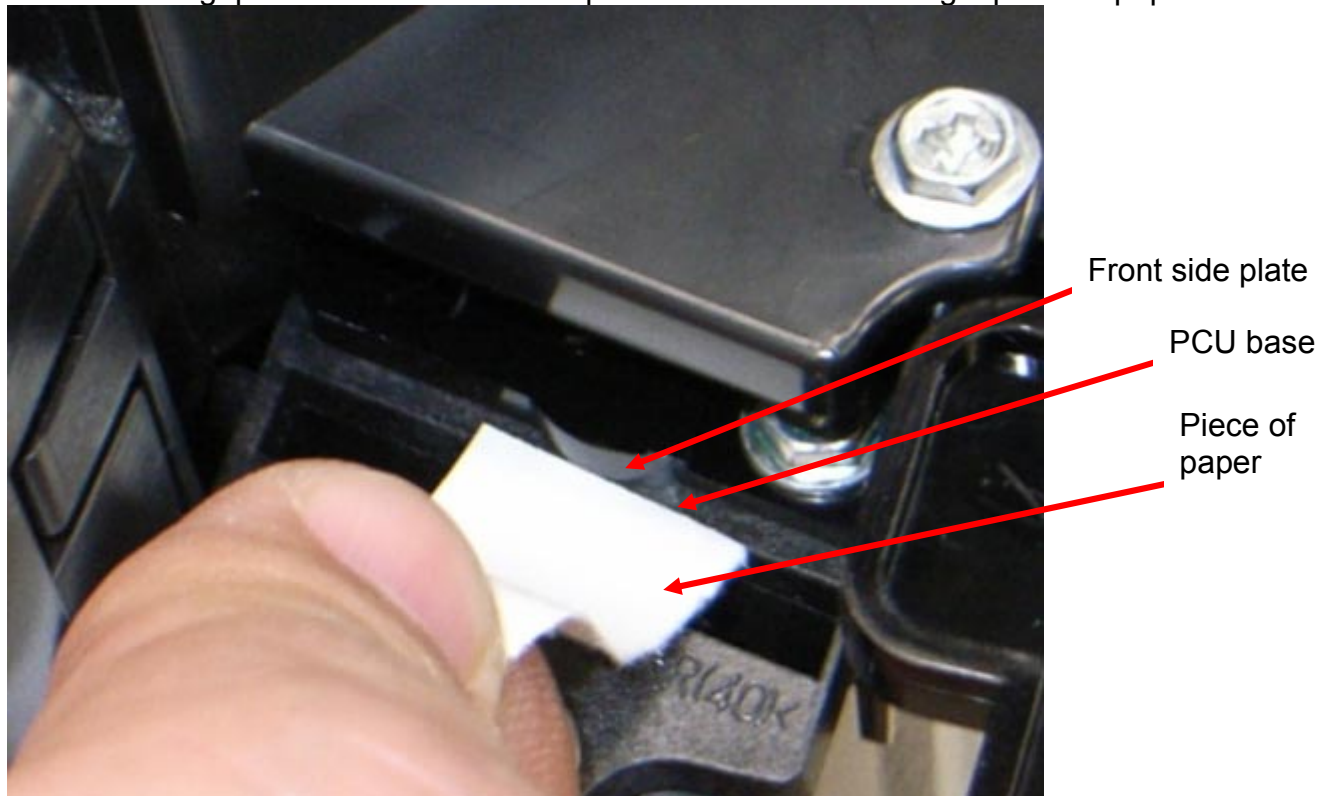
## Procedure

1. Cut and remove the plastic rod using a pair of needle-nosed pliers.

**Note:** There is no side effect created by removing this rod from the PCU (even from a normal PCU).



2. Check the gap between the front side plate and PCU base using a piece of paper.





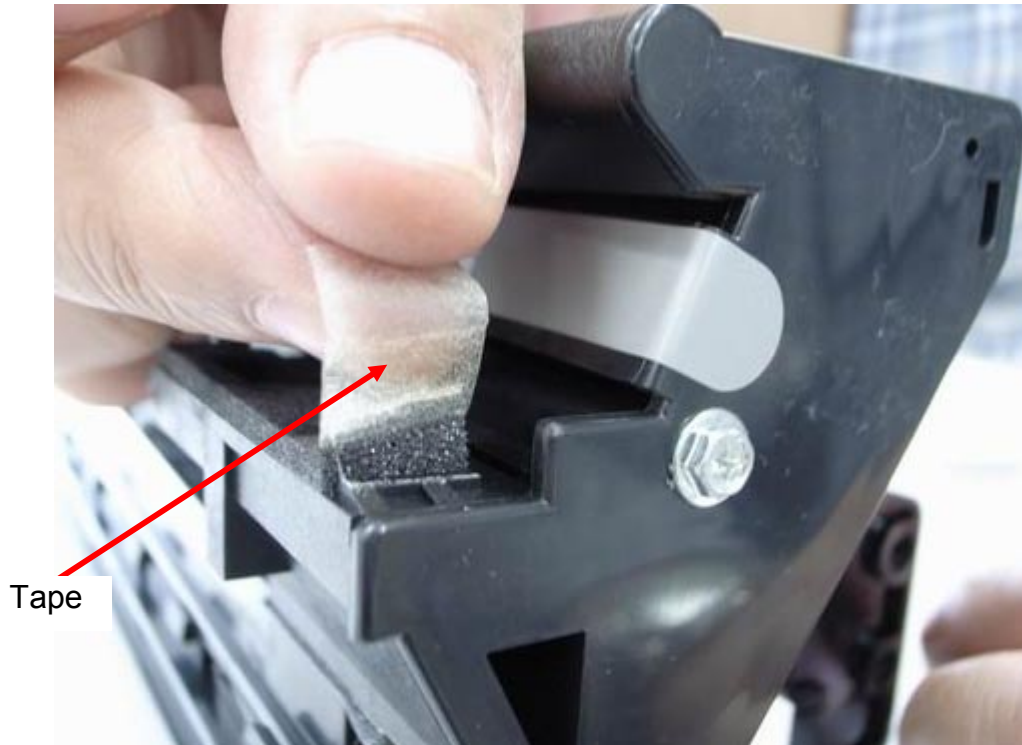
Model: Stella-C3 and Stella-F

Date: 21-Nov-07

No.: RB262023

**If you can insert the piece of paper into the gap in Step 2, continue with this procedure.**

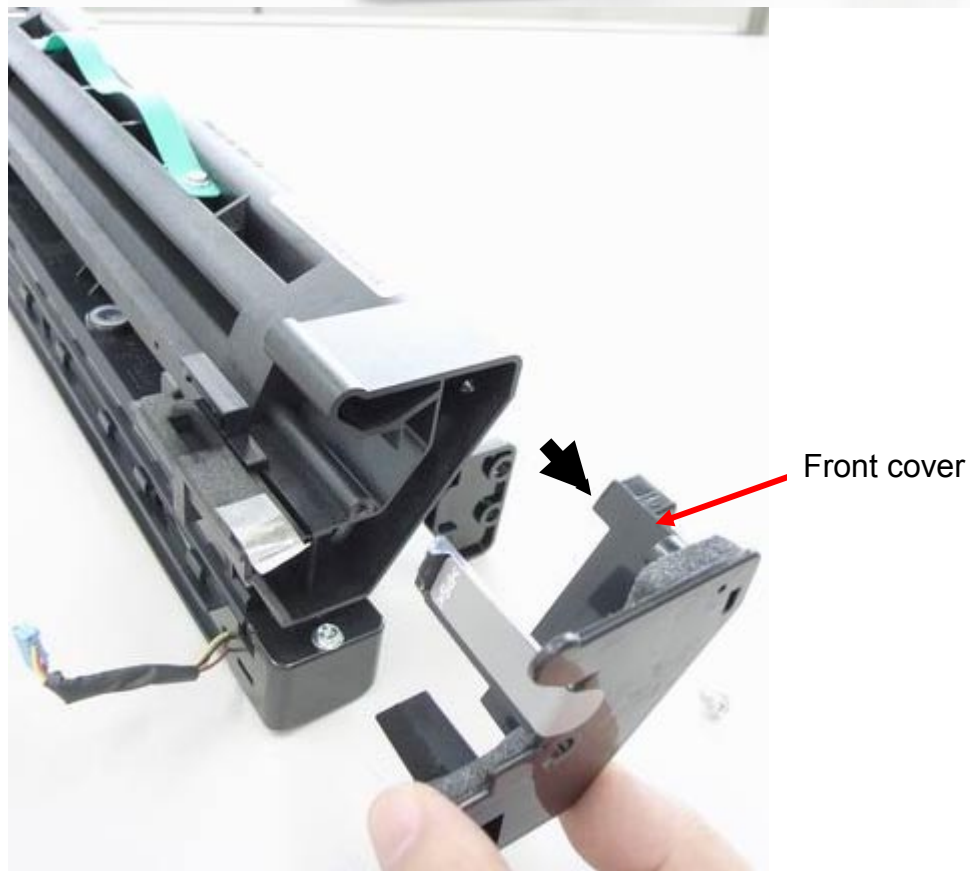
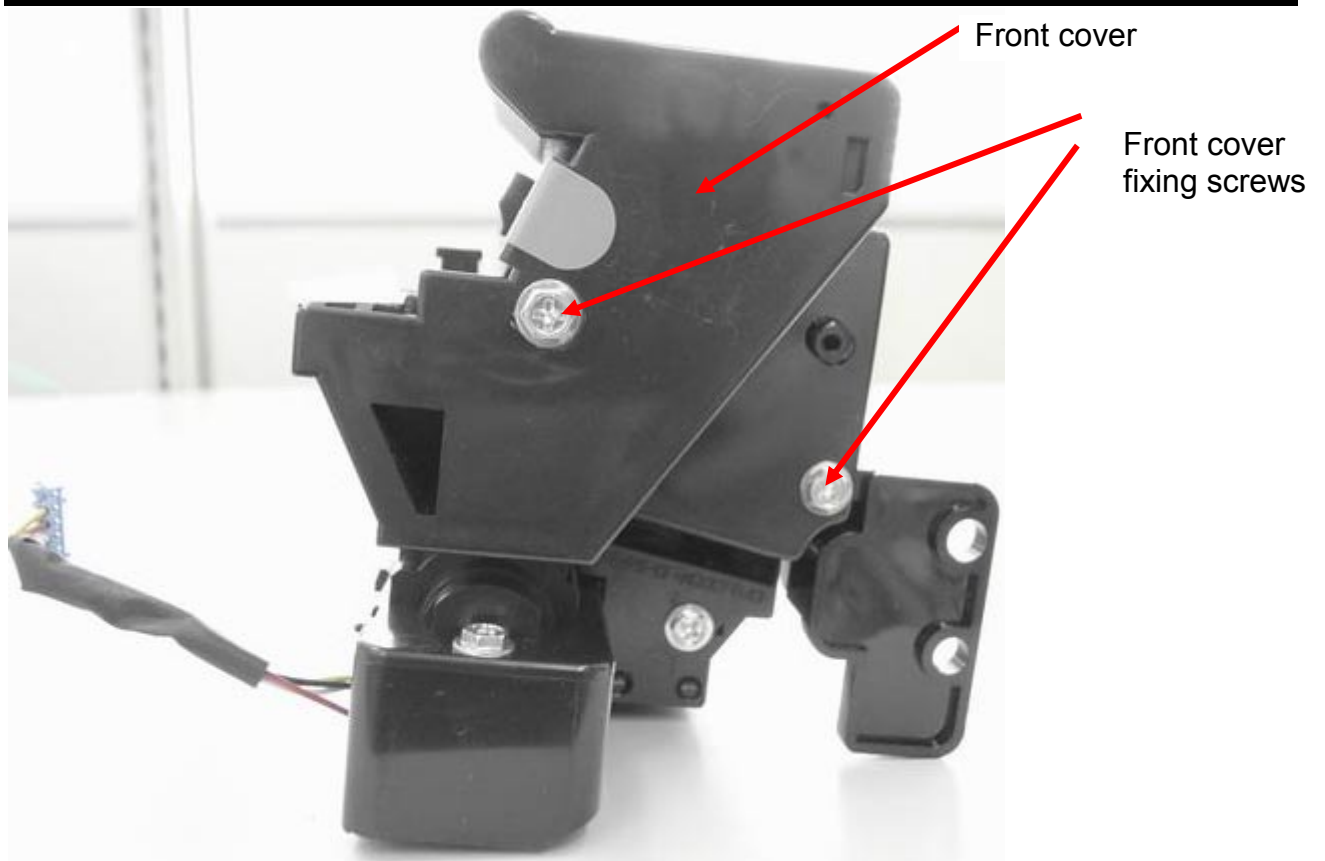
3. Remove the tape and front cover of the PCU (2 screws).



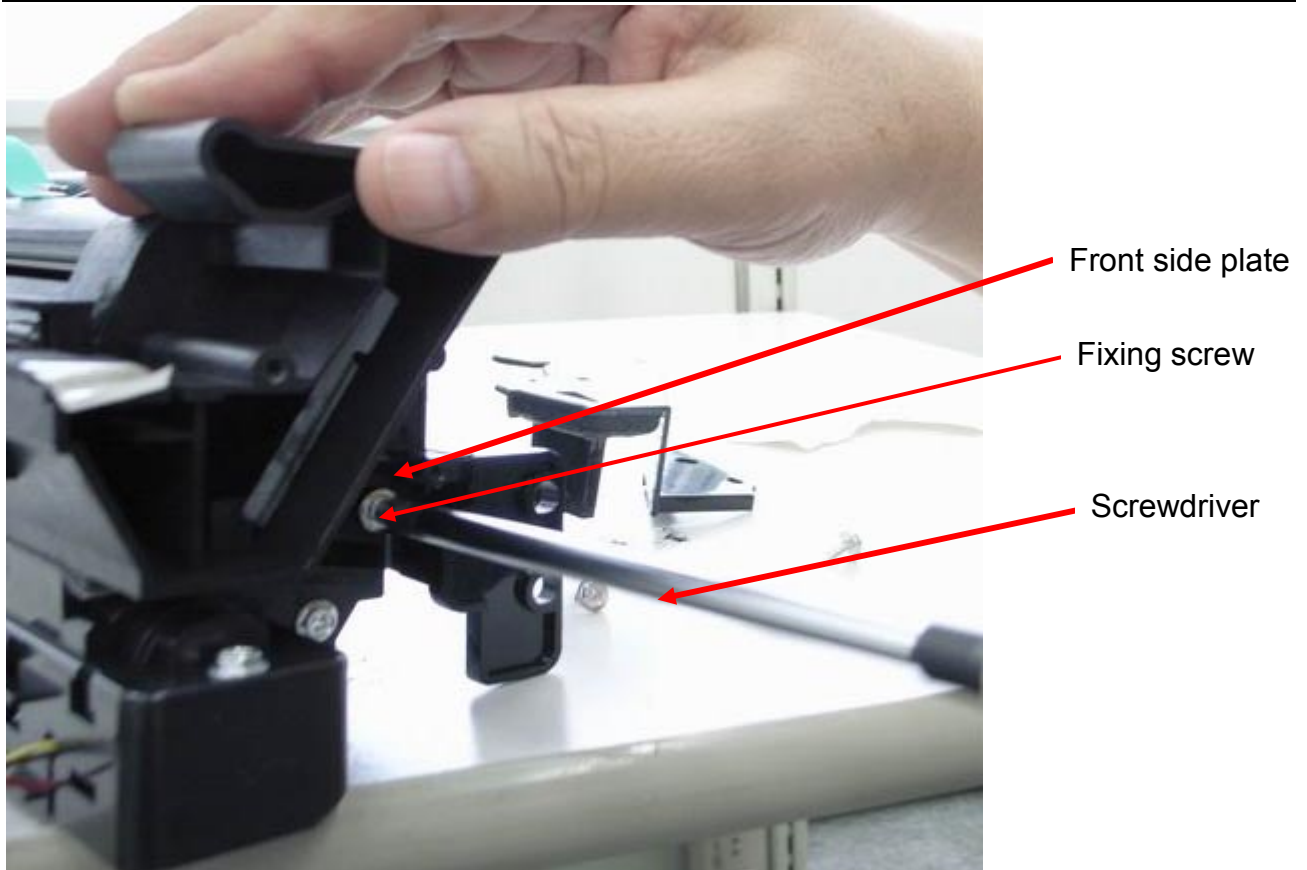
Model: Stella-C3 and Stella-F

Date: 21-Nov-07

No.: RB262023







4. Loosen the fixing screw for the front side plate.
  5. Press the front side plate in the direction of the white arrow (**see the photo on the next page**).
- Note:** This is to eliminate the gap between the front side plate and the PCU base.

Model: Stella-C3 and Stella-F

Date: 21-Nov-07

No.: RB262023



Front side plate

6. Tighten the fixing screw for the front side plate.
7. Reattach all the parts you removed in this procedure.

Model: Stella-C3 and Stella-F

Date: 21-Nov-07

No.: RB262023

## Affected Units (Machine Serial Numbers)

**Note:** As mentioned above, this symptom is estimated to occur on only 2.3% of the Affected Units listed below.

<Supply PCU for Stella-C3>

B44681: 20070100001 (200612 prod.) – 20070299999 (200702 prod.)

<Supply PCU for Stella-F>

B44683: 20061209717 (200612 prod.) – 20070299999 (200702 prod.)

<Stella-C3>

B26217: L9778700001 (200703 prod.) – L9778799999 (200703 prod.)

B26226: 8W779260003 (200612 prod.) – 8W778679999 (200706 prod.)

B26267: L9769600025 (200612 prod.) – L9779099999 (200706 prod.)

B28029: L9869600001 (200612 prod.) – L9879099999 (200706 prod.)

B28067: L9869600170 (200612 prod.) – L9878699999 (200702 prod.)

B28417: L9969600032 (200612 prod.) – L9979099999 (200706 prod.)

B28426: 8W889260001 (200612 prod.) – 8W888679999 (200706 prod.)

B28429: L9969600553 (200612 prod.) – L9979099999 (200706 prod.)

B28467: L9969600611 (200612 prod.) – L9979099999 (200706 prod.)

B28817: M0169600213 (200612 prod.) – M0178999999 (200706 prod.)

B28826: 8W999260001 (200612 prod.) – 8W998679999 (200706 prod.)

B28829: M0169603545 (200612 prod.) – M0179099999 (200706 prod.)

B28867: M0169604145 (200612 prod.) – M0178999999 (200706 prod.)

B29217: M0269600046 (200612 prod.) – M0279099999 (200706 prod.)

B29326: 8X228470001 (200704 prod.) – 8X228679999 (200706 prod.)

B29367: M0369600001 (200612 prod.) – M0378999999 (200706 prod.)

<Stella-F>

H55657: A4569600058 (200612 prod.) – A4578799999 (200703 prod.)

H55757: A4669600001 (200612 prod.) – A4678799999 (200703 prod.)

H55769: A4669600395 (200612 prod.) – A4678799999 (200703 prod.)

H55507: A3569607001 (200612 prod.) – A3579099999 (200706 prod.)

H55547: A3569647001 (200612 prod.) – A3579099999 (200706 prod.)

H55549: A3569649001 (200612 prod.) – A3579099999 (200706 prod.)

H55607: A4569607001 (200612 prod.) – A4579099999 (200706 prod.)

H55707: A4669607001 (200612 prod.) – A4679099999 (200706 prod.)

H55747: A4669647001 (200612 prod.) – A4679099999 (200706 prod.)

H55562: A3578501072 (200612 prod.) – A3578799999 (200703 prod.)

H55567: A3578501713 (200612 prod.) – A3578799999 (200703 prod.)

H55557: A3578500001 (200612 prod.) – A3578799999 (200703 prod.)

H55767: A4669600215 (200612 prod.) – A4678799999 (200703 prod.)

H55569: A3578502919 (200612 prod.) – A3578799999 (200703 prod.)

H46560: C6078100001 (200612 prod.) – C6078299999 (200703 prod.)

H55762: A4678500319 (200701 prod.) – A4678699999 (200702 prod.)

H55566: 5I338270001 (200701 prod.) – 5I448379999 (200703 prod.)

Model: Stella-C3 and Stella-F

Date: 21-Nov-07

No.: RB262023

H55766: 5I338270001 (200702 prod.) – 5I448379999 (200703 prod.)  
H55519: A3578700001 (200703 prod.) – A3579099999 (200706 prod.)  
H55542: A3578700001 (200703 prod.) – A3579099999 (200706 prod.)  
H55546: 5R118470001 (200703 prod.) – 5R118679999 (200706 prod.)  
H55749: A4678800334 (200704 prod.) – A4678909999 (200705 prod.)  
H55746: 5R228470001 (200704 prod.) – 5R228679999 (200706 prod.)  
H55742: A4678900265 (200705 prod.) – A4679099999 (200706 prod.)

## Modification Cut-in Serial Numbers

&lt;Supply PCU&gt;

B44681, B44683: 20070618321 –

&lt;Stella-C3&gt;

B26217: L9779100001 –  
B26226: 8W 78770001 –  
B26267: L9779100081 –  
B28029: L9879100001 –  
B28067: L9879100001 –  
B28417: L9979100001 –  
B28426: 8W88770003 –  
B28429: L9979100458 –  
B28467: L9979000945 –  
B28817: M0179100021 –  
B28826: 8W98770014 –  
B28829: M0179104553 –  
B28867: M0179105061 –  
B29217: M0279100001 –  
B29326: 8X28770001 –  
B29367: M0379100001 –

&lt;Stella-F&gt;

H55707: A4679100241 –  
H55541: A3579101263 –  
H55742: A4679100257 –  
H55746: 5R28770001 –  
H55749: A4679100358 –  
H55747: A4679100273 –  
H55507: A3579200001 –  
H55549: A3579200948 –  
H55519: A3579200540 –  
H55546: 5R18870001 –  
H55542: A3579200625 –  
H55607: A4579200001 –  
H55547: A3579200765 –

\*Other models: from next production onward.

Model: Stella-C3	Date: 3-Dec-07	No.: RB262024
------------------	----------------	---------------

Subject: Supports the Catalan and Turkish languages		Prepared by: M. Ishihara	
From: 1st Tech. Support Sec. Service Support Dept.			
Classification:	<input type="checkbox"/> Troubleshooting	<input type="checkbox"/> Part information	<input type="checkbox"/> Action required
	<input type="checkbox"/> Mechanical	<input type="checkbox"/> Electrical	<input type="checkbox"/> Service manual revision
	<input type="checkbox"/> Paper path	<input type="checkbox"/> Transmit/receive	<input type="checkbox"/> Retrofit information
	<input checked="" type="checkbox"/> Other (Firmware)		

This machine now supports Catalan and Turkish.

Please update the following firmware to add Catalan and Turkish language support.

- Firmware list
  - System ver.1.04 or later
  - Fax ver.02.00.00 or later
  - FCU ver.02.00.00 or later
  - Printer ver.1.03 or later
  - Websys ver.1.05 or later
  - Scanner ver.01.02 or later
- Firmware release notes
 

All firmware release notes use the same expression as shown below.

  - Supports the Catalan and Turkish languages.
- Supported functions
 

Supported device functions are different depending on language.

Please confirm them in the following table.

## [Device]

Device functions		Catalan	Turkish
Copy	Operation panel	OK	OK
Fax	Operation panel	OK	OK
	Lists printed from FAX operation panel (i.e. Print Journal List)	NO**	NO*
	Internet Fax: Email message (Transmission)	NO**	NO*
	Internet Fax: Email message (Reception)	OK	NO*
	Internet Fax: Email subject	NO**	NO*
	Standard Message Stamp	OK	OK

**Model:** Stella-C3

**Date:** 3-Dec-07

**No.:** RB262024

Device functions		Catalan	Turkish
Printer	Operation panel	OK	OK
	Printer lists in Printer Features (i.e. Configuration Page)	OK	NO*
Scanner	Operation panel	OK	OK
	Lists printed from Scanner operation panel (i.e. transmission result)	OK	OK
	E-mail Information Language in Scanner Features	OK	OK
User Tools	Print Address Book (Header)	OK	OK
	Headers or file names of other lists (i.e. Print Counter)	NO*	NO*
Web Image Monitor	Display language	OK	OK
	Help	NO**	NO*
Other	E-mail Notification	OK	OK
	Software Keyboard	OK	NO***

\* It will be printed/used/displayed in English instead.

\*\* It will be printed/used/displayed in Spanish instead.

\*\*\* Turkish is not available.

## [Software]

Software	Catalan	Turkish
SmartDeviceMonitor for Admin	NO	NO
SmartDeviceMonitor for Client	NO	NO
DeskTopBinder	NO	NO

## [Drivers]

Drivers		Catalan	Turkish
Printer driver	RPCS driver	NO	OK
	PCL driver	OK	NO
	PS driver	NO	NO
Twain driver		NO	NO
LAN-Fax driver		NO	NO

Model: Stella-C3

Date: 3-Dec-07

No.: RB262024

**[Manuals]**

<b>Manuals</b>	<b>Catalan</b>	<b>Turkish</b>
Manual	OK	OK

Model: General		Date: 12-Mar-08	No.: RGene027
Subject: New Wireless LAN Option		Prepared by: H.K.	
From: 1st Tech. Support Sec. Service Support Dept.			
Classification:	<input type="checkbox"/> Troubleshooting <input type="checkbox"/> Mechanical <input type="checkbox"/> Paper path <input type="checkbox"/> Product Safety	<input type="checkbox"/> Part information <input type="checkbox"/> Electrical <input type="checkbox"/> Transmit/receive <input type="checkbox"/> Other (     )	<input checked="" type="checkbox"/> Action required <input checked="" type="checkbox"/> Service manual revision <input type="checkbox"/> Retrofit information

## Important Information on the Release of a New Wireless LAN Option

### Overview

1. Production of a new wireless LAN option, the **IEEE 802.11b Interface Unit Type N**, began in March 2008. This will replace the current wireless LAN options listed below, as the vendor discontinued production on a key part contained in these options.
2. Make sure to see below for the target models and action in the field, including the necessary firmware versions.

### Details

1. Discontinued wireless LAN options:

for US

Code	EDP	Description	Note
B736-06	412176	IEEE 802.11b Interface Unit Type E	discontinued in 1st 2007
G813-01	402345	802.11b Interface Unit Type F	discontinued in 1st 2007 due to country origin issue
<b>G813-08</b>	<b>403019</b>	<b>802.11b Interface Unit Type F</b>	change from EDP:402345
G813-04	402378	IEEE802.11b Interface Unit Type H	discontinued in 1st 2007 due to country origin issue
<b>G813-07</b>	<b>403018</b>	<b>IEEE802.11b Interface Unit Type H</b>	change from EDP:402378
G874-39	402631	IEEE802.11b Interface Unit Type I	discontinued in 1st 2007 due to country origin issue
<b>G874-48</b>	<b>403017</b>	<b>IEEE802.11b Interface Unit Type I</b>	change from EDP:402631

for EU and Asia

Code	EDP	Description	Note
B736-07	412177	IEEE 802.11b Interface Unit Type E	discontinued in 1st 2007
G813-02	402358	802.11b Interface Unit Type F	discontinued in 1st 2007 due to country origin issue
<b>G813-10</b>	<b>403020</b>	<b>802.11b Interface Unit Type F</b>	change from EDP:402358
G813-05	402379	IEEE802.11b Interface Unit Type H	discontinued in 1st 2006 due to RoHS
G813-45	412996	IEEE802.11b Interface Unit Type H	discontinued in 1st 2007 due to country origin issue
<b>G813-09</b>	<b>414421</b>	<b>IEEE802.11b Interface Unit Type H</b>	change from EDP:412996

2. Specifications of the new wireless LAN option:



Print\_B7367059.pc

#### Specification Sheet:

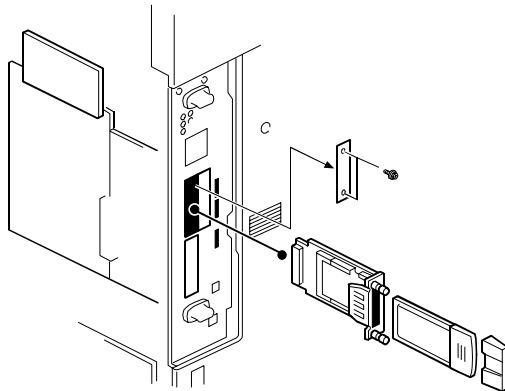
Model Name: IEEE 802.11b Interface Unit Type N  
 Machine code: B736-16  
 EDP code: 414525  
 Package: All-in-one (PCB, LAN card, and cover are pre-assembled)  
 Channel freq. range: 2412 MHz to 2462 MHz (11ch.)  
 Transmission speed: 1Mbps, 2Mbps, 5.5 Mbps, 11Mbps



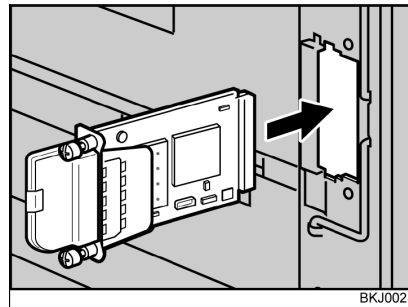
Model: General

Date: 12-Mar-08

No.: RGene027



Previous types:  
PCB, LAN card, and cover are  
separate



New Type (IEEE802.11b  
Interface Unit Type N):  
Pre-assembled

## Action in the Field

### 1. MFP Models

Update the firmware on the target MFP models to the necessary versions at the installation.

**See “Target Models” below.**

### 2. LP Models

Update the firmware on the target LP models to the necessary versions if the customer requests it. The following notice to customers (from the Operating Instructions) lists the firmware versions necessary to use the new wireless LAN option. If a firmware update is necessary, the customer contacts their sales or service representative.

**See “Target Models” below.**

Notice to users (excerpt on next page):



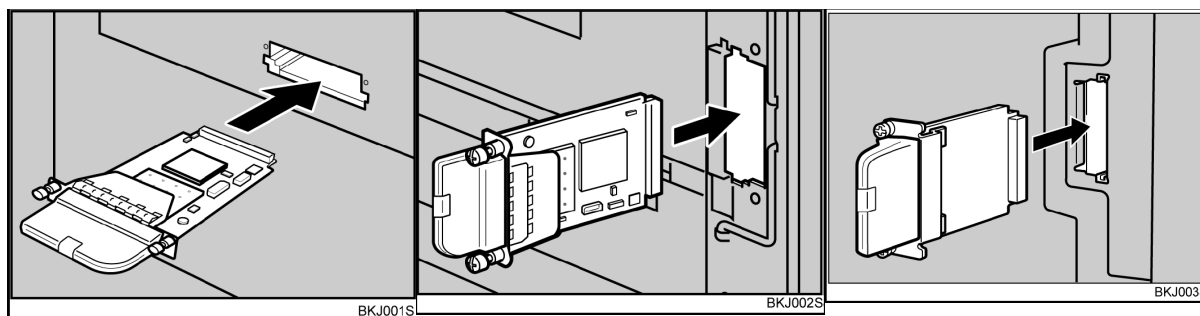
print\_B7367058.pdf

**Excerpt from the Operating Instructions for LP models**
Installing the Optional Wireless LAN Interface Unit
**Important:**

- Before handling the wireless LAN interface unit, ground yourself by touching something metal to discharge any static electricity. Static electricity can damage the wireless LAN interface unit.
  - Do not subject the wireless LAN interface unit to physical shocks.
1. Turn off the power of the printer, and then unplug the power cable and the interface cable.
  2. Remove the two screws from the interface unit's slot cover, and then remove the slot cover.  
The removed cover is not used when installing the wireless LAN interface unit. Keep it for possible future use.

For details about the location of the interface unit slot, see the manual provided with your printer.

3. Attach the wireless LAN interface unit.



Insert the end of the wireless LAN interface unit into the slot.

Slot types vary according to device. For details, see the manual provided with your printer.

4. Fasten the wireless LAN interface unit to the controller board with the two screws.  
Check the wireless LAN interface unit is connected firmly to be controller board.

**Note**

- Use a coin or similar object if the screws do not turn easily.
- After finishing installation, you can check the wireless LAN interface unit is properly installed: Print the configuration page from the [List / Test Print] menu. If it is installed properly, the name of wireless LAN interface unit will appear for "Device Connection" on the configuration page.
- If the wireless LAN interface unit is not installed properly, reinstall it following this procedure. If you cannot install it properly even after attempting reinstallation, contact your sales or service representative.
- You need to make settings with the control panel before using the wireless LAN interface unit. For more information, see the manual provided with your printer.

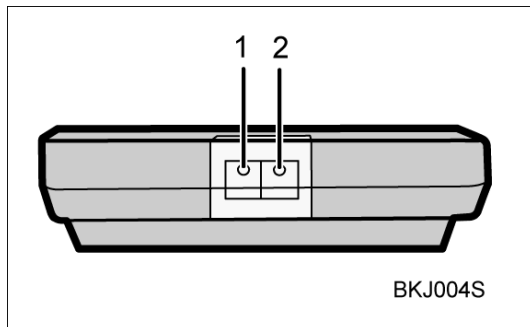
Model: General

Date: 12-Mar-08

No.: RGene027

Checking the Connection

To check the connection, use the two lights on the optional wireless LAN interface unit.



1. The orange light indicates normal network connectivity.
2. The green light indicates that the optional wireless LAN interface unit is properly powered.

If both lights are lit, the wireless connection is fully operational.

Model: General

Date: 12-Mar-08

No.: RGene027

## Target Models

### MFP

	Model	System firmware	NCS firmware	Websys firmware	Applied to the production line
01.	Athena-C1/C1k	1.68	5.17	1.12	2008 February
02.	Apollon-C1	1.67	5.17	1.09	2008 February
03.	Pegasus-C1	(1.31)	(5.17)	(1.08)	2008 March
04.	Kir-C3(GW)	1.08	6.14	1.07	2008 March
05.	Stella-C3(GW)	1.05	6.14	1.06	2008 March
06.	Parisian-C1(GW)	1.02	6.14	1.03	2008 March
07.	Neptune-C2	(2.00)	(6.10)	(1.08)	2008 May
08.	Martini-C3.5	3.01	5.56	2.03	2008 April

### Note:

- The old wireless LAN options can be used with both the old and new firmware.
- The following models only support the old wireless LAN options:  
Bellini-C3, Themis-C1, Adonis-C4.5, Russian-C4.5, Jupiter-C2, Martini-C2.5, Martini-C3

### LP

	Model	System firmware	NCS firmware	Websys firmware	Applied to the production line
01.	Gaia-P2	(1.12)	T.B.D	T.B.D	2008 April
02.	Gaia-P2L	(1.01)	T.B.D	T.B.D	2008 April
03.	Apollon-P1d	1.07	6.05.7	1.03	2008 March
04.	Adonis-P4	(1.08)	T.B.D	T.B.D	2008 April
05.	Martini-P2	(1.10)	T.B.D	T.B.D	2008 April
06.	Sincere-P1	1.08*	6.10	1.03	2008 February
07.	Neptune-P1	T.B.D	T.B.D	T.B.D	2008 May

### Note:

- The old wireless LAN options can be used with both the old and new firmware.
- The following models only support the old wireless LAN options:  
Kir-P4, Ares-P2, Jupiter-P4
- \*: The notice to customers for Sincere -P1 mentions “version 1.07” for the System firmware, but 1.07 was not used for the production. The correct version is 1.08.

Model: Stella-C3		Date: 17-Sep-08	No.: RB262025
Subject: Correction of IP-FAX function		Prepared by: K. Moriizumi	
From: 1st Tech. Support Sec. Service Support Dept.			
Classification:	<input type="checkbox"/> Troubleshooting <input type="checkbox"/> Mechanical <input type="checkbox"/> Paper path <input type="checkbox"/> Product Safety	<input type="checkbox"/> Part information <input type="checkbox"/> Electrical <input type="checkbox"/> Transmit/receive <input checked="" type="checkbox"/> Other (     )	<input type="checkbox"/> Action required <input checked="" type="checkbox"/> Service manual revision <input type="checkbox"/> Retrofit information <input type="checkbox"/> Tier 2

## Important Information about the Model S-C3 Fax Option

- The Model S-C3 Fax option cannot connect to the SIP server for the IP-FAX function. So, do not use the RAM address settings related to the SIP server.

For example:

**68AFD6(H)** - Priority for SIP and H.323 0: H.323, 1: SIP

**68AFD7(H)** - SIP function 0: Disabled, 1: Enabled

**68AFD9(H)** - SIP digest authentication function 0: Disabled, 1: Enabled

- For the IP-FAX function, disregard the descriptions of the SIP server.

Model: Stella-C3		Date: 1-Apr-09	No.: RB262026
Subject: Cover: IC Card		Prepared by: M. Ishihara	
From: 1st Tech. Support Sec. Service Support Dept.			
Classification:	<input type="checkbox"/> Troubleshooting <input checked="" type="checkbox"/> Part information <input type="checkbox"/> Action required <input type="checkbox"/> Mechanical <input type="checkbox"/> Electrical <input type="checkbox"/> Service manual revision <input type="checkbox"/> Paper path <input type="checkbox"/> Transmit/receive <input type="checkbox"/> Retrofit information <input type="checkbox"/> Product Safety <input type="checkbox"/> Other (      ) <input type="checkbox"/> Tier 2		

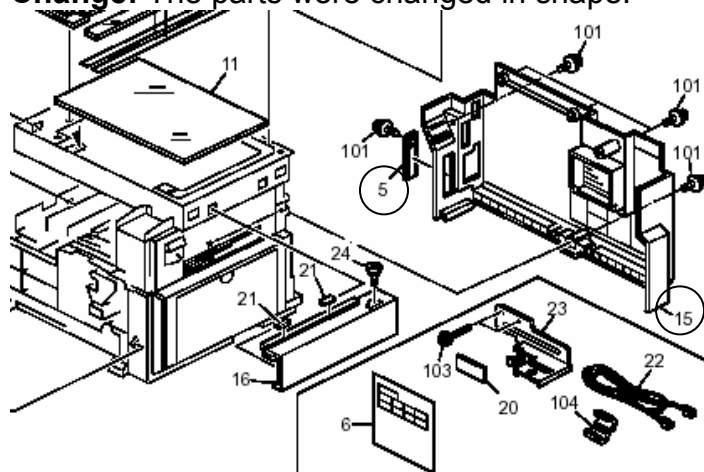
Old P/N	New P/N	Description	Q'ty	Int	Page	Index	Note
B2621255	D0671255	Cover: IC Card	1-1	O/O	7	5	*1
B2621250	D0671250	Cover: Rear	1-1	O/O	7	15	
-	B2621313	Cover: Fax Control Unit: C3	0-1	-	-	-	*2

\*1: See MB MB262001 issued on 5-Mar-07 for the old part number.

\*2: It is added in the accessories.

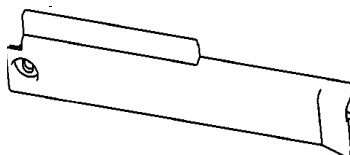
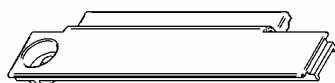
**Reason:** To unify the parts with S-C4

**Change:** The parts were changed in shape.



B2621255

D0671255



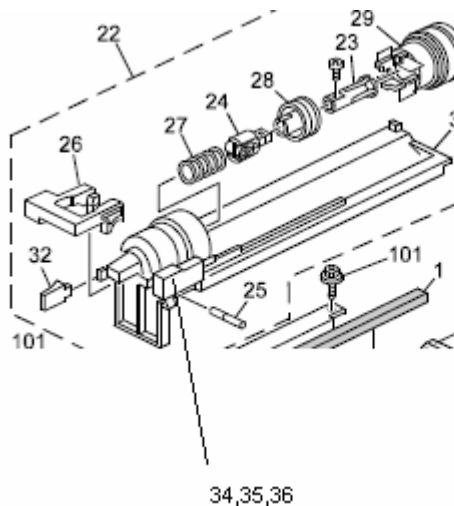
B 2621313



Model: S-C3		Date: 21-Oct-09	No.: RB262027
Subject: Shutter: Discharge Used Toner		Prepared by: M. Ishihara	
From: 2 <sup>nd</sup> Overseas Tech Support Sec. 2 <sup>nd</sup> PQM Dept.			
Classification:	<input type="checkbox"/> Troubleshooting <input type="checkbox"/> Mechanical <input type="checkbox"/> Paper path <input type="checkbox"/> Product Safety	<input checked="" type="checkbox"/> Part information <input type="checkbox"/> Electrical <input type="checkbox"/> Transmit/receive <input type="checkbox"/> Other (     )	<input type="checkbox"/> Action required <input type="checkbox"/> Service manual revision <input type="checkbox"/> Retrofit information <input type="checkbox"/> Tier 2

Old P/N	New P/N	Description	Q'ty	Int	Page	Index	Note
-	B0443428	Shutter: Discharge used Toner	0-1	-	35	34	New Index
-	B0443432	Spring: Shutter: Discharge used Toner	0-1	-	35	35	New Index
-	B0443466	Cover: Discharge used Toner: Sub Ass'y	0-1	-	35	36	New Index

**Reason / Change:** Those parts were missing in the parts catalog.



Model: S-C3		Date: 18-Dec-09	No.: RB262028
Subject: Shutter: Middle Roller		Prepared by: M. Ishihara	
From: 2 <sup>nd</sup> Overseas Tech Support Sec. 2 <sup>nd</sup> PQM Dept.			
Classification:	<input type="checkbox"/> Troubleshooting <input type="checkbox"/> Mechanical <input type="checkbox"/> Paper path <input type="checkbox"/> Product Safety	<input checked="" type="checkbox"/> Part information <input type="checkbox"/> Electrical <input type="checkbox"/> Transmit/receive <input type="checkbox"/> Other (     )	<input type="checkbox"/> Action required <input type="checkbox"/> Service manual revision <input type="checkbox"/> Retrofit information <input type="checkbox"/> Tier 2

Old P/N	New P/N	Description	Q'ty	Int	Page	Index	Note
AF022142 -	-	Middle Roller	<b>2-4</b>	-	37	8	
AF022142 -	-	Middle Roller	2-0	-	37	48	<b>should be deleted</b>

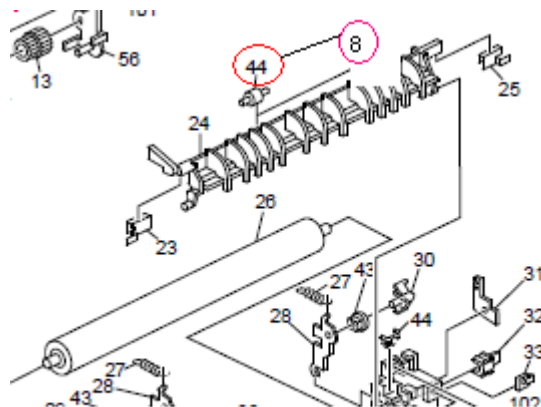
**Reason / Change:** Parts catalog correction.

Page:36

16. Fusing Unit (B262/B292/B280/B293) (B284/B288)

Incorrect Index No. 44

**Correct Index No. 8**





Reissued:18-Oct-10

Model: S-C3	Date: 14-Oct-10	No.: RB262029a
-------------	-----------------	----------------

## RTB Reissue

The items in ***bold italics*** were corrected or added.

Subject: Ferrite Core: RFC-9		Prepared by: M. Ishihara	
From: 2 <sup>nd</sup> Overseas Tech Support Sec. 2 <sup>nd</sup> PQM Dept.			
Classification:	<input type="checkbox"/> Troubleshooting <input type="checkbox"/> Mechanical <input type="checkbox"/> Paper path <input type="checkbox"/> Product Safety	<input checked="" type="checkbox"/> Part information <input type="checkbox"/> Electrical <input type="checkbox"/> Transmit/receive <input type="checkbox"/> Other (     )	<input type="checkbox"/> Action required <input type="checkbox"/> Service manual revision <input type="checkbox"/> Retrofit information <input type="checkbox"/> Tier 2

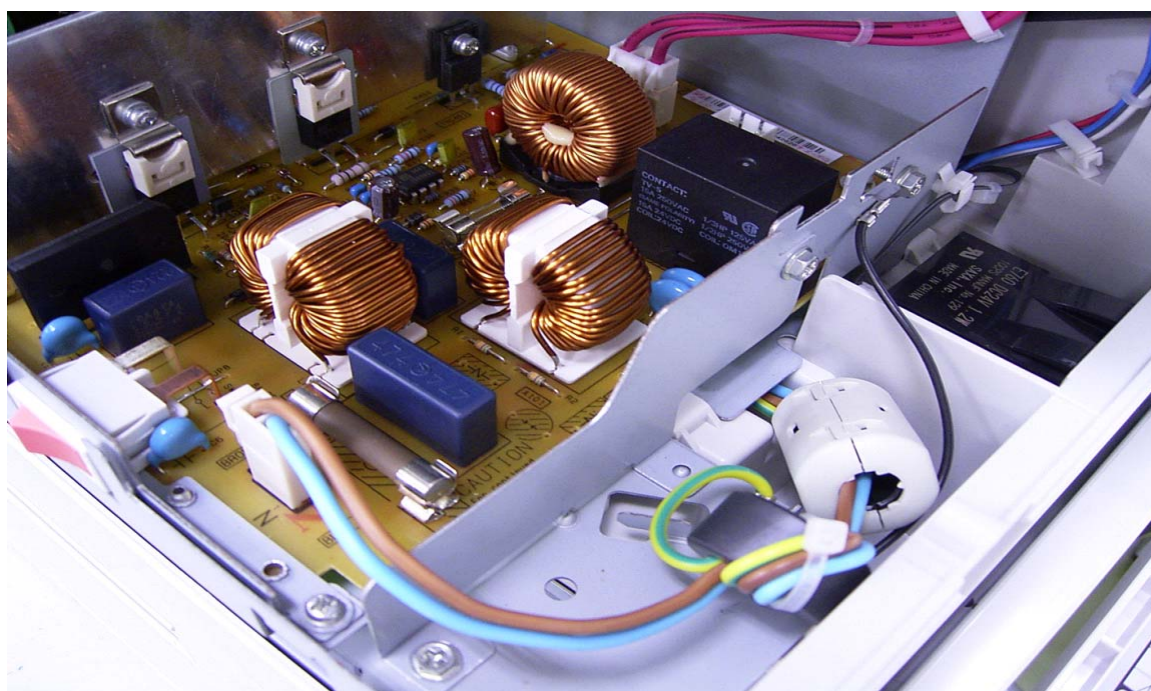
Old P/N	New P/N	Description	Q'ty	Int	Page	Index	Note
	16071460	Ferrite Core: RFC-9	0-1		41	108	New Index

**Reason / Change:** The ferrite core has been added to the power supply cord in the power supply unit to protect the AC line from electrical noise.

***This modification is applied for Europe, Asia and China machines only.***

***The brown and the blue wires are the power supply cord.***

***The ferrite core (white one) pinches the power supply cord.***



Model: S-C3		Date: 19-Jan-11	No.: RB262030
Subject: Power Supply Unit: 200V		Prepared by: M. Ishihara	
From: 2 <sup>nd</sup> Overseas Tech Support Sec. 2 <sup>nd</sup> PQM Dept.			
Classification:	<input type="checkbox"/> Troubleshooting	<input checked="" type="checkbox"/> Part information	<input type="checkbox"/> Action required
	<input type="checkbox"/> Mechanical	<input type="checkbox"/> Electrical	<input type="checkbox"/> Service manual revision
	<input type="checkbox"/> Paper path	<input type="checkbox"/> Transmit/receive	<input type="checkbox"/> Retrofit information
	<input type="checkbox"/> Product Safety	<input type="checkbox"/> Other (      )	<input type="checkbox"/> Tier 2

Old P/N	New P/N	Description	Q'ty	Int	Page	Index	Note
AZ230162	AZ230249	Power Supply Unit: 200V	1-1	X/O	41	20	

**Reason / Change:** To meet EU standard EN60950 and Chinese standard CCC, the component parts on the PSU have been changed.

Model: S-C3		Date: 05-Jul-11	No.: RB262031
Subject: SD-Card: PS3: STL-C3: EXP: Ass'y		Prepared by: M. Ishihara	
From: 2 <sup>nd</sup> Overseas Tech Support Sec. 2 <sup>nd</sup> PQM Dept.			
Classification:	<input type="checkbox"/> Troubleshooting <input type="checkbox"/> Mechanical <input type="checkbox"/> Paper path <input type="checkbox"/> Product Safety	<input checked="" type="checkbox"/> Part information <input type="checkbox"/> Electrical <input type="checkbox"/> Transmit/receive <input type="checkbox"/> Other (     )	<input type="checkbox"/> Action required <input type="checkbox"/> Service manual revision <input type="checkbox"/> Retrofit information <input type="checkbox"/> Tier 2

Old P/N	New P/N	Description	Q'ty	Int	Page	Index	Note
-	D3235004	SD-Card: PS3: STL-C3: Exp: Ass'y	0-1	-	-	-	

**Change:** The SD Card for PostScript 3 (previously available as an option) for the Stella-C3 has been registered as a service part.

**Reason:** Requests were received from the field.

**Reissued: 26-Jun-12**

Model: S-C3	Date: 25-Sep-06	No.: RB262006f
-------------	-----------------	----------------

**RTB Reissue**

The items in bold italics have been added.

Subject: Firmware Release Note: Printer		Prepared by: M.Saiki	
From: 2nd Tech Service Sect., MFP/Printer Tech Service Dept.			
Classification:	<input type="checkbox"/> Troubleshooting	<input type="checkbox"/> Part information	<input type="checkbox"/> Action required
	<input type="checkbox"/> Mechanical	<input type="checkbox"/> Electrical	<input type="checkbox"/> Service manual revision
	<input type="checkbox"/> Paper path	<input type="checkbox"/> Transmit/receive	<input type="checkbox"/> Retrofit information
	<input type="checkbox"/> Product Safety	<input type="checkbox"/> Other (      )	<input type="checkbox"/> Tier 2

This RTB has been issued to announce the firmware release information for the **Printer**.

Version	Program No.	Effective Date	Availability of RFU
<b>1.08</b>	<b><i>B8925540G</i></b>	<b><i>July 2012 production</i></b>	<b><i>Available</i></b>
1.07	B8925540F	March 2010 production	Available
1.04	B8925540E	January 2009 production	Available
1.03	B8925540D	December 2007 production	Available
1.02	B8925540C	August 2007 production	Available
1.01	B8925540B	January 2007 production	Available
1.00	B8925540A	1st Mass production	Available

**Note: Definition of Availability of RFU via @Remote**
**"Available"** The firmware can be updated via RFU or SD card.

**"Not available"**: The firmware can only be updated via SD card.

Version	Modified Points or Symptom Corrected
<b>1.08</b>	<b>Symptom corrected:</b> <ol style="list-style-type: none"> <li><b><i>If the Auto Continue setting is "Immediate" and the source tray runs out of paper, the device will stall. This only occurred if the paper ran out after several small jobs (30 or 40) were submitted back to back.</i></b></li> <li><b><i>Small rectangular images at the top of PCL5 pages (such as logos) appear skewed in printouts. (GFPR#RC06100004, GFPR#RC06120009, GFPR#RC06120008, GFPR#RC07030001, GFPR#RC07010008, GFPR#RC07040006, GFPR#RC08020001, GFPR#RC08020003, GFPR#RC08020006, GFPR#RC10070003, GFPR#RC12030004)</i></b></li> </ol>
1.07	Symptom corrected: <ul style="list-style-type: none"> <li>The PCL5 line pitch might be printed larger than the original.</li> <li>The printable area of a PCL5 page might extend beyond the border on the right side.</li> </ul>
1.04	GPS-Web: Guest Users are able to view the Printer Job History under the following conditions: <ul style="list-style-type: none"> <li>SP5-401-046 is disabled</li> <li>SP5-401-101 is enabled</li> <li>The URL is input directly into the address bar</li> </ul>
1.03	Symptom corrected: <ol style="list-style-type: none"> <li>PCL jobs containing fonts with a number of characters that is evenly divisible by 256, might cause the device to stall. (GFPR#RE07060006, RA07090001)</li> </ol>

**Reissued: 26-Jun-12**

Model: S-C3		Date: 25-Sep-06	No.: RB262006f
Version	Modified Points or Symptom Corrected		
	<p>2. Subsequent PCL jobs will be canceled after the device prints a large number of jobs (more than 2000) submitted by the PCL 6 driver. (GFPR#RE07080008)</p> <p>Other changes:</p> <p>1. Supports the Catalan and Turkish languages. For the details of this, please refer to RTB#RB262024 "Supports the Catalan and Turkish languages".</p> <p>Note: To support this feature, install all of the following firmware:</p> <ul style="list-style-type: none"> <li>- System_Copy firmware ver 1.04 or later</li> <li>- Printer firmware ver 1.03 or later</li> <li>- Websys firmware ver 1.05 or later</li> <li>- Scanner firmware ver 01.02 or later</li> <li>- Fax firmware ver 02.00.00 or later</li> <li>- FCU firmware ver 02.00.00 or later</li> </ul>		
1.02	<p>Symptom corrected:</p> <ol style="list-style-type: none"> <li>1. PCL jobs containing character codes that are not on the font SD card, might cause the device to stall.</li> <li>2. Jobs containing bitmapped PCL fonts might cause the device to stall.</li> <li>3. When the job is created using SAP DeviceType or Barcode &amp; OCR package for SAP System DT, the following issues will occur. <ul style="list-style-type: none"> <li>- When sending a BOP job, the printer status stays at "Processing" and the job is not printed.</li> <li>- Memory leak occurs when printing a bitmap font with insufficient memory condition.</li> </ul> </li> <li>4. Various printing anomalies when printing PowerPoint2007 jobs that have Autoshapes and shadows.</li> <li>5. This can occur if printing with both of the following RPCS driver settings: <ul style="list-style-type: none"> <li>- Resolution: 1800 x 600 dpi</li> <li>- Job Load Distribution: Shift load to driver</li> </ul> </li> <li>6. Accessing the document server in WIM via an single sign-on server might result in "404 Not Found". This only happens if the url used to access WIM contains a "Host Name" and "Domain Name" (The "domain name" setting in the MFP is not blank.). It does not happen if the url contains an IP address.</li> </ol> <p>Note: To fix this issue, all of the following firmware must be applied:</p> <ul style="list-style-type: none"> <li>- System firmware ver 1.03 or later</li> <li>- Websys firmware ver 1.04 or later</li> <li>- NFA firmware ver 2.04 or later</li> <li>- Printer firmware ver 1.02 or later</li> </ul>		

**Reissued: 26-Jun-12**

Model: S-C3		Date: 25-Sep-06	No.: RB262006f
Version	Modified Points or Symptom Corrected		
1.01	<p>Other changes:</p> <ol style="list-style-type: none"><li>1. The device supports Unicode v3.0 fonts. Unicode v3.0 fonts for Japanese/Korean/Traditional Chinese/Simplified Chinese are only available with the Unicode Font Package for SAP.</li></ol> <p>Symptom corrected:</p> <ol style="list-style-type: none"><li>1. PCL data might be printed as garbage characters after several hundred pages of PCL data are printed without a power-off. (Techmail#TS060753).</li><li>2. PCL jobs that include separator pages might be printed as garbage characters (FPR#RC06040009/RC0610007).</li><li>3. PDF files printed using Adobe Acrobat and the RPCS driver might be missing characters or portions of characters. This occurs if both of the following conditions are met:<ul style="list-style-type: none"><li>- "Shift load to printer" selected for the RPCS driver's Job Load Distribution setting.</li><li>- Image rotation required: Portrait document to LEF paper -or- Landscape document to SEF paper.</li></ul></li></ol>		
1.00	1st Mass production.		