

Reissued: 10-Jun-09

Model: GW-C2	Date: 19-Dec-07	No.: RB282001a
--------------	-----------------	----------------

RTB Reissue

The items in bold italics have been added.

Subject: ROM History (BICU)		Prepared by: Y.Yoshida	
From: 1st Tech. Support Sec. Service Support Dept.			
Classification:	<input type="checkbox"/> Troubleshooting	<input type="checkbox"/> Part information	<input type="checkbox"/> Action required
	<input type="checkbox"/> Mechanical	<input type="checkbox"/> Electrical	<input type="checkbox"/> Service manual revision
	<input type="checkbox"/> Paper path	<input type="checkbox"/> Transmit/receive	<input type="checkbox"/> Retrofit information
	<input type="checkbox"/> Product Safety	<input checked="" type="checkbox"/> Other ()	

This RTB has been issued to announce the firmware release information for the Model GW-C2 BICU.

For China model

Version	Program No.	C. SUM	Effective Date
<i>0.05</i>	<i>B2825536A</i>	-	<i>1st Mass Production</i>

Version	Symptom Corrected
<i>0.05</i>	<i>1st Mass Production</i>

For Chinese OEM (Founder) model

Version	Program No.	C. SUM	Effective Date
<i>0.01</i>	<i>B2825537</i>	-	<i>1st Mass Production</i>

Version	Symptom Corrected
<i>0.01</i>	<i>1st mass production for Founder model</i>

Reissued: 23-Feb-09

Model: GW-C2	Date: 15-Jan-08	No.: RB282002a
--------------	-----------------	----------------

RTB Reissue

The items in bold italics have been added.

Subject: Firmware Release Note: Printer/Scanner		Prepared by: Y.Yoshida	
From: 1st Tech. Support Sec. Service Support Dept.			
Classification:	<input type="checkbox"/> Troubleshooting <input type="checkbox"/> Mechanical <input type="checkbox"/> Paper path <input checked="" type="checkbox"/> Other ()	<input type="checkbox"/> Part information <input type="checkbox"/> Electrical <input type="checkbox"/> Transmit/receive	<input type="checkbox"/> Action required <input type="checkbox"/> Service manual revision <input type="checkbox"/> Retrofit information

This RTB has been issued to announce the Printer/Scanner firmware release history for models without the NIC.

Version	Program No.	Effective Date
<i>1.97</i>	<i>B8655571G</i>	<i>February 2009 production</i>
<i>1.93</i>	<i>B8655571D</i>	<i>January 2008 production</i>

Version	Modified Points or Symptom Corrected
<i>1.97</i>	<i>Symptom corrected: Nothing is displayed on the LCD screens for the Printer and Scanner when Korean is selected as the display language.</i>
<i>1.93</i>	<i>1st mass production</i>

Model: Greatwall-C2		Date: 8-Feb-08	No.: RB282003
Subject: Technical information for Greatwall-C2		Prepared by: Y.Yoshida	
From: 1st Tech. Support Sec. Service Support Dept.			
Classification:	<input type="checkbox"/> Troubleshooting <input type="checkbox"/> Mechanical <input type="checkbox"/> Paper path <input type="checkbox"/> Product Safety	<input type="checkbox"/> Part information <input type="checkbox"/> Electrical <input type="checkbox"/> Transmit/receive <input checked="" type="checkbox"/> Other ()	<input type="checkbox"/> Action required <input type="checkbox"/> Service manual revision <input type="checkbox"/> Retrofit information

This RTB shows the differences from the Greatwall-C1.

● Overview

GW-C2 has a higher cpm.

- Base model: Greatwall-C1 (B283-21, B282-21)
- Model Name: Ricoh Aficio MP 1800L/ LD (EDP: 414270 / 414271)
- Code: B283-61 / B282-61
- Options: Same as Greatwall-C1

● Main Differences from the Greatwall-C1

1. Basic Specifications

- Copy Speed: 18 cpm (16cpm for Greatwall-C1)
- Warm-up time: 25 sec. (15 sec. for Greatwall-C1)

2. Units:

- Fusing: 1 Fusing Lamp (2 Fusing Lamps for Greatwall-C1)

Note: The fusing solenoid was removed due to the change in warm-up time from 15 to 25 seconds.

3. Main Differences in the Service Manual

Installation>-Copier Installation->Accessory Check

No.	Description	Q'ty
1	USB Cable	1
2	Operating Instructions-System (book)	1
3	Operating Instructions-Copy (book)	1
4	Operating Instructions –Printer/Scanner (CD-ROM)	1
5	Sheet-Name: Tel	1
6	Sheet-Energy Star	1
7	Sheet-Laser Safety	1
8	Sheet-EULA	1
9	Seal-Caution	1
10	Toner Bottle	1
11	Developer	1

Model: Greatwall-C2

Date: 8-Feb-08

No.: RB282003

PM table>Fusing Unit

	EM	60k	120k	AN	NOTE
Hot roller			R		
Pressure roller			R		
Pressure-roller bushing			R		
Hot roller stripper pawls			R	C	Dry cloth

Replacement and adjustment

>Fusing section

4.General specification information

Different points from GW-C1 are colored in blue

		GW-C1/C1d	GW-C2/C2d
CPM		16 cpm	18 cpm
Warm-up time		Less than 15 sec.	Less than 25 sec.
1 st copy speed (A4 LEF, from std. tray)		Less than 6.5 sec.	Same as GW-C1
Memory capacity (Engine capacity)	Standard	16MB	Same as GW-C1
	Option	No	Same as GW-C1
Paper capacity	Standard	C1: 250 sheets tray x1 C1d: 250 sheets tray x1 *100 sheet multi bypass tray for both C1 and C1d	Same as GW-C1
	Max.	1,350 sheets	Same as GW-C1
Max. CV		10K outputs /month	Same as GW-C1
Duty		30K outputs /month	Same as GW-C1
Duplex		C1: No C1d: Yes (standard)	Same as GW-C1
Copy	APS/AMS	No	Same as GW-C1
	Scan once copy many	Yes (standard)	Same as GW-C1
	Electronic sort	Yes (standard)	Same as GW-C1
	Image rotation	No	Same as GW-C1
	Series copy	No	Same as GW-C1
	Combine copy	No	Same as GW-C1
Print	DDST(GDI)	Yes (standard)	Same as GW-C1
Scanner	TWAIN	Yes (standard)	Same as GW-C1
Option			
Platen cover		Yes (optional)	Same as GW-C1
ADF		Yes (optional)	Same as GW-C1
ARDF		Yes (C1cd only, optional)	Same as GW-C1
Paper bank		Yes (optional)	Same as GW-C1
Fax option		No	Same as GW-C1
Optional counter interface		Yes (optional)	No

Model: GW-C2 (Founder)		Date: 16-Jun-09	No.: RB282004
Subject: ROM History(BICU)		Prepared by: Y.Yoshida	
From: 2nd Tech. Support Sec. Service Support Dept.			
Classification:	<input type="checkbox"/> Troubleshooting <input type="checkbox"/> Mechanical <input type="checkbox"/> Paper path <input type="checkbox"/> Product Safety	<input type="checkbox"/> Part information <input type="checkbox"/> Electrical <input type="checkbox"/> Transmit/receive <input checked="" type="checkbox"/> Other ()	<input type="checkbox"/> Action required <input type="checkbox"/> Service manual revision <input type="checkbox"/> Retrofit information <input checked="" type="checkbox"/> Tier 2

This RTB has been issued to announce the firmware release information for the **GW-C2 BICU**

For Chinese OEM (Founder) model

Version	Program No.	Effective Date
0.02	B2825537A	1st Mass production.

Version	Modified Points or Symptom Corrected
0.02	1st Mass production.

Reissued: 17-Jun-10

Model: GW-C3	Date: 03-Mar-10	No.: RB282005a
---------------------	-----------------	----------------

RTB Reissue

The items in bold italics have been added.

Subject: Firmware Release Note: BICU_IC		Prepared by: M.Saiki	
From: 2nd Overseas Tech Support Sec., 2nd PQM Dept.			
Classification:	<input type="checkbox"/> Troubleshooting <input type="checkbox"/> Mechanical <input type="checkbox"/> Paper path <input type="checkbox"/> Product Safety	<input type="checkbox"/> Part information <input type="checkbox"/> Electrical <input type="checkbox"/> Transmit/receive <input checked="" type="checkbox"/> Other (Firmware)	<input type="checkbox"/> Action required <input type="checkbox"/> Service manual revision <input type="checkbox"/> Retrofit information <input checked="" type="checkbox"/> Tier 2

This RTB has been issued to announce the firmware release information for the **BICU_IC**.

Version	Program No.	Effective Date
<i>0.09</i>	<i>B2825538A</i>	<i>July 2010 production</i>
0.07	B2825538	1st Mass production

Version	Modified Points or Symptom Corrected
<i>0.09</i>	<i>1st Release for Gestetner model.</i>
0.07	1st Mass production

Model: GW-C2		Date: 18-Jun-10	No.: RB282006
Subject: Parts Catalog Correction_OP_Case_GW-C2&C3		Prepared by: M.Saiki	
From: 2nd Overseas Tech Support Sec., 2nd PQM Dept.			
Classification:	<input type="checkbox"/> Troubleshooting <input type="checkbox"/> Mechanical <input type="checkbox"/> Paper path <input type="checkbox"/> Product Safety	<input checked="" type="checkbox"/> Part information <input type="checkbox"/> Electrical <input type="checkbox"/> Transmit/receive <input type="checkbox"/> Other ()	<input type="checkbox"/> Action required <input type="checkbox"/> Service manual revision <input type="checkbox"/> Retrofit information <input type="checkbox"/> Tier 2

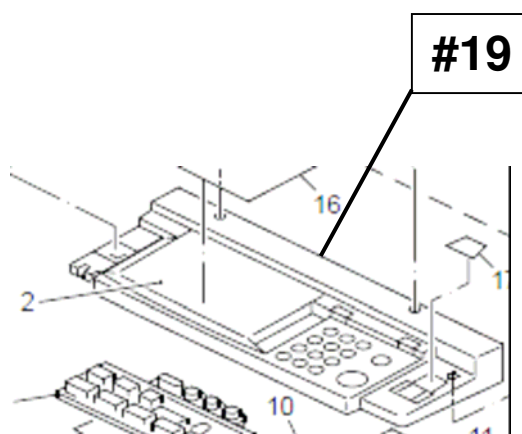
Incorrect part number	Correct part number	Description	Q'ty	Int	Page	Index	Note
	B2431451	CASE:OPERATION SUB-UNIT	0 - 1		11	#19	

#: New index

Change: An index in the illustration was added.

Reason: Correction of illustration and part number.

See the following diagram for the corrected illustration.



Model: GW-C2		Date: 09-Sept-10	No.: RB282007
Subject: Parts Catalog Correction_EEPROM		Prepared by: M.Saiki	
From: 2nd Overseas Tech Support Sec., 2nd PQM Dept.			
Classification:	<input type="checkbox"/> Troubleshooting <input type="checkbox"/> Mechanical <input type="checkbox"/> Paper path <input type="checkbox"/> Product Safety	<input checked="" type="checkbox"/> Part information <input type="checkbox"/> Electrical <input type="checkbox"/> Transmit/receive <input type="checkbox"/> Other ()	<input type="checkbox"/> Action required <input type="checkbox"/> Service manual revision <input type="checkbox"/> Retrofit information <input type="checkbox"/> Tier 2

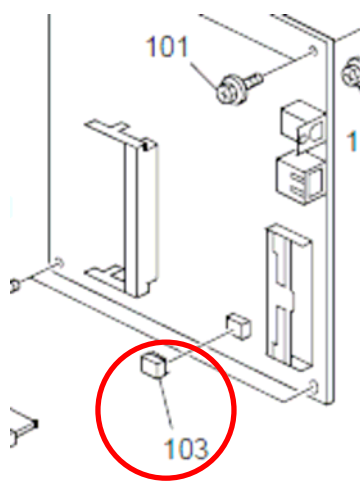
Target Models: K-C L series, GW-C series, and DDST unit Type A/Type B.

Old part number	New part number	Description	Q'ty	Page	Index	Model
14076612		EEPROM:AT24C64A-10PU-2.7	1 - 0	55	102	GW-C1
14076612		EEPROM:AT24C64A-10PU-2.7	1 - 0	57	103	GW-C2
14076612		EEPROM:AT24C64A-10PU-2.7	1 - 0	57	103	GW-C3
14076612		EEPROM:AT24C64A-10PU-2.7	1 - 0	55	102	ML316/ML316D
14076612		EEPROM:AT24C64A-10PU-2.7	1 - 0	57	103	ML319/ML319D
14076612		EEPROM:AT24C64A-10PU-2.7	1 - 0	3	103	DDST unit Type A / Type B

Change: Part number **14076612** and the illustrations were deleted.

Reason: EEP-ROM as a new spare part cannot be used on the GDI controller board as a single replacement component because it causes network connection failure. Please replace the controller board if you need to replace the RAM.

Part encircled in red in the following diagram is deleted.



Model: GW-C4	Date: 16-Mar-11	No.: RB282008
--------------	-----------------	---------------

Subject: Firmware Release Note: BICU_IC		Prepared by: M. Saiki	
From: 2nd Overseas Tech Support Sec., 2nd PQM Dept.			
Classification:	<input type="checkbox"/> Troubleshooting <input type="checkbox"/> Mechanical <input type="checkbox"/> Paper path <input type="checkbox"/> Product Safety	<input type="checkbox"/> Part information <input type="checkbox"/> Electrical <input type="checkbox"/> Transmit/receive <input checked="" type="checkbox"/> Other (Firmware)	<input type="checkbox"/> Action required <input type="checkbox"/> Service manual revision <input type="checkbox"/> Retrofit information <input checked="" type="checkbox"/> Tier 2

This RTB has been issued to announce the firmware release information for the BICU_IC.

Version	Program No.	Effective Date	Availability of RFU
0.07	B2825533	1st Mass production	Not Available

Note: Definition of Availability of RFU

“Available”: The firmware can be updated via RFU or SD card.

“Not available”: The firmware can only be updated via SD card.

Version	Modified Points or Symptom Corrected
0.07	1st Mass production

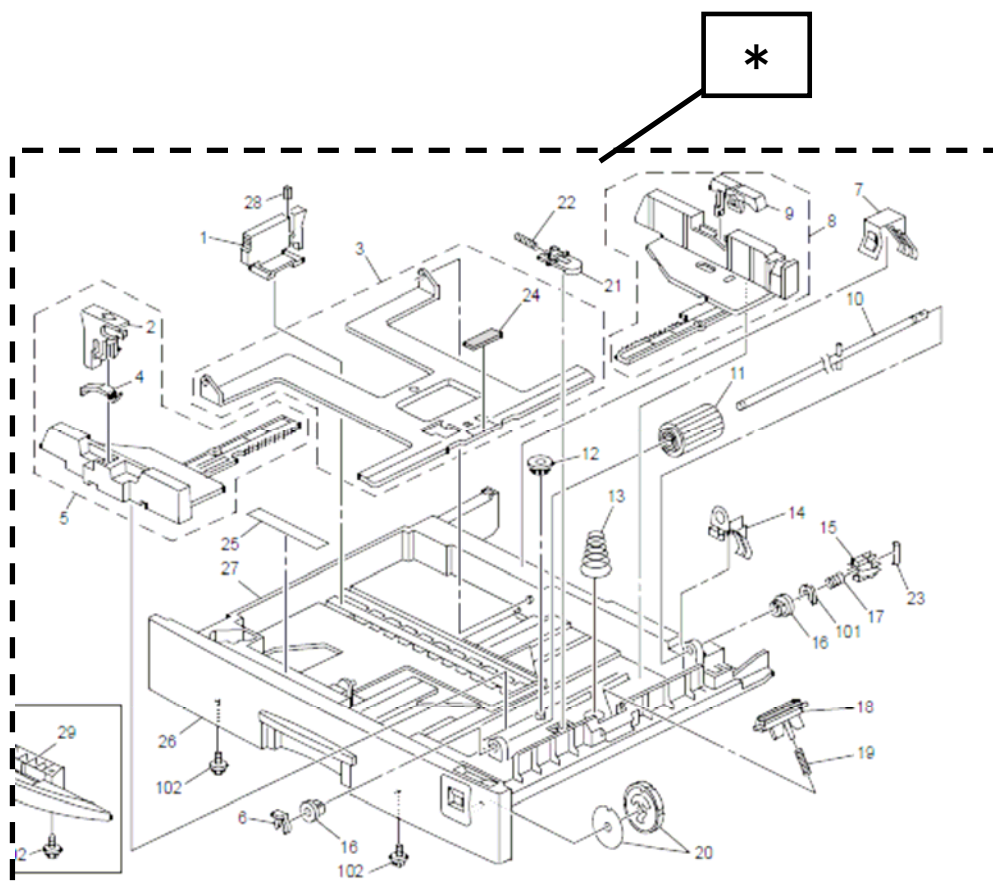
Model: GW-C2		Date: 23-Mar-11	No.: RB282009
Subject: Parts Catalog Correction_Paper Tray		Prepared by: M.Saiki	
From: 2nd Overseas Tech Support Sec., 2nd PQM Dept.			
Classification:	<input type="checkbox"/> Troubleshooting <input type="checkbox"/> Mechanical <input type="checkbox"/> Paper path <input type="checkbox"/> Product Safety	<input checked="" type="checkbox"/> Part information <input type="checkbox"/> Electrical <input type="checkbox"/> Transmit/receive <input type="checkbox"/> Other ()	<input type="checkbox"/> Action required <input type="checkbox"/> Service manual revision <input type="checkbox"/> Retrofit information <input type="checkbox"/> Tier 2

Incorrect part number	Correct part number	Description	Q'ty	Int	Page	Index	Note
	B2452840	PAPER TRAY:PD-C2:ASS'Y	0 - 1		23	*	

Change: An index in the illustration was added.

Reason: Correction of illustration and part number.

See the following diagram for the corrected illustration.



Model: GW-C4d		Date: 10-Nov-11	No.: RB282010
Subject: Parts Catalog Correction_GW-C4d_Model Name Plate		Prepared by: M.Saiki	
From: 2nd Tech Service Sect., MFP/P Tech Service Dept.			
Classification:	<input type="checkbox"/> Troubleshooting <input type="checkbox"/> Mechanical <input type="checkbox"/> Paper path <input type="checkbox"/> Product Safety	<input checked="" type="checkbox"/> Part information <input type="checkbox"/> Electrical <input type="checkbox"/> Transmit/receive <input type="checkbox"/> Other ()	<input type="checkbox"/> Action required <input type="checkbox"/> Service manual revision <input type="checkbox"/> Retrofit information <input type="checkbox"/> Tier 2

Old part number	New part number	Description	Q'ty	Int	Page	Index	Note
	B2820476	MODEL NAME PLATE:B282-67:RIC			9	16	

Change/Reason: The part number was missing from the parts catalog.