

Model: Kir-C3		Date: 25-May-06	No.: RB245001
Subject: ROM History for BICU for K-C3a Asia		Prepared by: Hiromoto Saitoh	
From: 1st Tech. Support Sec. Service Support Dept.			
Classification:	<input type="checkbox"/> Troubleshooting <input type="checkbox"/> Mechanical <input type="checkbox"/> Paper path <input type="checkbox"/> Product Safety	<input type="checkbox"/> Part information <input type="checkbox"/> Electrical <input type="checkbox"/> Transmit/receive <input checked="" type="checkbox"/> Other (      )	<input type="checkbox"/> Action required <input type="checkbox"/> Service manual revision <input type="checkbox"/> Retrofit information

We hereby inform you of the BICU firmware history for the K-C3a (**Asia** model only).

**Note:**

Kir-C3a: 15cpm simplex machine

Version	Program No.	Effective Date
<b>0.12</b>	<b>B2455533</b>	<b>1st mass production</b>

Version	Symptom Corrected
<b>0.12</b>	<b>1st mass production</b>

**Reissued: 09-Nov-09**

Model: Kir-C3	Date: 25-May-06	No.: RB245002c
---------------	-----------------	----------------

**RTB Reissue**

The items in bold italics have been corrected.

Subject: ROM History for BICU for K-C3a		Prepared by: M. Saiki	
From: 1st Tech. Support Sec. Service Support Dept.			
Classification:	<input type="checkbox"/> Troubleshooting	<input type="checkbox"/> Part information	<input type="checkbox"/> Action required
	<input type="checkbox"/> Mechanical	<input type="checkbox"/> Electrical	<input type="checkbox"/> Service manual revision
	<input type="checkbox"/> Paper path	<input type="checkbox"/> Transmit/receive	<input type="checkbox"/> Retrofit information
	<input type="checkbox"/> Product Safety	<input checked="" type="checkbox"/> Other (      )	

We hereby inform you of the BICU firmware history for the K-C3a.

**Note:**

Kir-C3a: 15cpm simplex machine

For USA/Europe model

Version	Program No.	Effective Date
0.14	C	September 2007 production
0.13	B	Feb/07 Production
0.12	B2455531A	1st mass production

Version	Symptom Corrected
0.14	Symptom corrected: 1. If a DF jam occurs and the meter click timing has been set to "at paper exit" (delivery sensor), the un-printed page is counted up by the optional counter card.
0.13	A counter error occurs when the counter value reaches eight digits.
0.12	1st mass production

For Asia/Taiwan model

Version	Program No.	Effective Date
0.14	B	September 2007 production
0.13	A	Feb/07 Production
0.12	B2455533	1st mass production

Version	Symptom Corrected
0.14	Symptom corrected: 1. If a DF jam occurs and the meter click timing has been set to "at paper exit" (delivery sensor), the un-printed page is counted up by the optional counter card.
0.13	A counter error occurs when the counter value reaches eight digits.
0.12	1st mass production

**Reissued: 09-Nov-09**

Model: Kir-C3	Date: 25-May-06	No.: RB245002c
---------------	-----------------	----------------

For Korea model

Version	Program No.	Effective Date
<b>0.15</b>	<b>B</b>	<b><i>November 2009 production</i></b>
0.14	A	September 2007 production
0.13	B2455535	1st mass production

Version	Symptom Corrected
<b>0.15</b>	<b><i>Symptom Corrected: "Bypass Tray" was translated incorrectly in User Tools (Korean only).</i></b>
0.14	Symptom corrected: 1. If a DF jam occurs and the meter click timing has been set to "at paper exit" (delivery sensor), the un-printed page is counted up by the optional counter card.
0.13	1st mass production

**Reissued: 10-Aug-11**

Model: Kir-C3	Date: 25-May-06	No.: RB245003h
---------------	-----------------	----------------

**RTB Reissue**

The items in bold italics have been corrected.

Subject: ROM History for BICU for K-C Series		Prepared by: M. Saiki	
From: 2nd Overseas Tech Support Sec., 2nd PQM Dept.			
Classification:	<input type="checkbox"/> Troubleshooting	<input type="checkbox"/> Part information	<input type="checkbox"/> Action required
	<input type="checkbox"/> Mechanical	<input type="checkbox"/> Electrical	<input type="checkbox"/> Service manual revision
	<input type="checkbox"/> Paper path	<input type="checkbox"/> Transmit/receive	<input type="checkbox"/> Retrofit information
	<input type="checkbox"/> Product Safety	<input checked="" type="checkbox"/> Other (      )	

We hereby inform you of the BICU (Engine) firmware history for the K-C3.5Lb, K-C3.5Lcd, K-C3Lb, C3Lcd, C3b, and C3cd.

**Note:**

K-C3.5Lb: 16cpm simplex machine with new GDI controller (18cpm for Asia model only)  
K-C3.5Lcd: 20cpm duplex machine with new GDI controller  
Kir-C3**Lb**: 16cpm simplex machine with GDI controller  
Kir-C3**Lcd**: 20cpm duplex machine with GDI controller  
Kir-C3**b**: 16cpm simplex machine  
Kir-C3**cd**: 20cpm duplex machine

Basic model                  Non controller model  
MFP model                  With GDI or GW controller model

For USA/Europe basic model

Version	Program No.	Effective Date
0.29	E	Feb/11 Production
0.24tur_cata	B2765531C_S01	Apr/08 Production
0.25	D	Sep/07 Production
0.24	C	Feb/07 Production
0.19	B	Sep/06 Production
0.18	B2765531A	1st mass production

Version	Symptom Corrected
0.29	Symptoms corrected: 1. The counter for custom paper sizes, SP8-442-255 - C:PrtPGS/Ppr Size (Other(Custom)), counts up whenever a print job is performed and the paper fed from the bypass tray, regardless of the actual paper size. 2. Scanning is interrupted if the Stamp feature has been selected and automatic size detection has been enabled.  Other changes: Supports the K-C3.5L.

**Reissued: 10-Aug-11**

Model: Kir-C3	Date: 25-May-06	No.: RB245003h
Version	Symptom Corrected	
0.24tur_cata	Supports the Turkish and Catalan display languages. Note: Due to memory constrictions, the Russian and Norwegian display languages have been deleted to make this possible.	
0.25	Symptom corrected: 1. If a DF jam occurs and the meter click timing has been set to "at paper exit" (delivery sensor), the un-printed page is counted up by the optional counter card. 2. GDI controller only: OHP sheets fed from the bypass tray are counted up as "thick paper" inside the SP modes that display counter values by paper type.	
0.24	An error occurs with the decrement (subtraction) key card during duplex printing.	
0.19	The print job stops if several TWAIN scanning jams occur during the job.	
0.18	1st mass production	

For Asia/Taiwan basic model

Version	Program No.	Effective Date
0.29	E	Feb/11 Production
0.25	D	Sep/07 Production
0.24	C	Feb/07 Production
0.19	B	Sep/06 Production
0.18	B2765533A	1st mass production

Version	Symptom Corrected
0.29	Symptoms corrected: 1. The counter for custom paper sizes, SP8-442-255 - C:PrtPGS/Ppr Size (Other(Custom)), counts up whenever a print job is performed and the paper fed from the bypass tray, regardless of the actual paper size. 2. Scanning is interrupted if the Stamp feature has been selected and automatic size detection has been enabled.  Other changes: Supports the K-C3.5L.
0.25	Symptom corrected: 1. If a DF jam occurs and the meter click timing has been set to "at paper exit" (delivery sensor), the un-printed page is counted up by the optional counter card. 2. GDI controller only: OHP sheets fed from the bypass tray are counted up as "thick paper" inside the SP modes that display counter values by paper type.
0.24	An error occurs with the decrement (subtraction) key card during duplex printing.
0.19	The print job stops if several TWAIN scanning jams occur during the job.
0.18	1st mass production

**Reissued: 10-Aug-11**

Model: Kir-C3	Date: 25-May-06	No.: RB245003h
---------------	-----------------	----------------

For China basic model

Version	Program No.	Effective Date
<b>0.31</b>	<b>D</b>	<b>Sep/11 Production</b>
0.30	C	May/11 Production
0.29	B	Feb/11 Production
0.25	A	Sep/07 Production
0.24	B2775534	1st mass production

Version	Symptom Corrected
<b>0.31</b>	<b><i>Supports the Model K-C3.5L Gestetner (Chinese model).</i></b>
0.30	Change for China models only: Supports Chinese font type GB18030.
0.29	Symptoms corrected: 1. The counter for custom paper sizes, SP8-442-255 - C:PrtPGS/Ppr Size (Other(Custom)), counts up whenever a print job is performed and the paper fed from the bypass tray, regardless of the actual paper size. 2. Scanning is interrupted if the Stamp feature has been selected and automatic size detection has been enabled.  Other changes: Supports the K-C3.5L.
0.25	Symptom corrected: 1. If a DF jam occurs and the meter click timing has been set to "at paper exit" (delivery sensor), the un-printed page is counted up by the optional counter card. 2. GDI controller only: OHP sheets fed from the bypass tray are counted up as "thick paper" inside the SP modes that display counter values by paper type.
0.24	1st mass production

For Korea basic model

Version	Program No.	Effective Date
0.26	B	Nov/09 Production
0.25	A	Sep/07 Production
0.24	B2765535	1st mass production

Version	Symptom Corrected
0.26	Symptom Corrected: "Bypass Tray" was translated incorrectly in User Tools (Korean only).

**Reissued: 10-Aug-11**

Model: Kir-C3		Date: 25-May-06	No.: RB245003h
Version	Symptom Corrected		
0.25	Symptom corrected: 1. If a DF jam occurs and the meter click timing has been set to "at paper exit" (delivery sensor), the un-printed page is counted up by the optional counter card. 2. GDI controller only: OHP sheets fed from the bypass tray are counted up as "thick paper" inside the SP modes that display counter values by paper type.		
0.24	1st mass production		

## For Generic MFP model

Version	Program No.	Effective Date	Availability of RFU
0.22	B2765540C	Aug/10 Production	Not available
0.21	B2765540B	Nov/09 Production	Available
0.21	B2765531C_S01	Apr/08 Production	Available
0.21	B	Feb/07 Production	Available
0.20	A	Sep/06 Production	Available
0.14	B2765540	1st mass production	Available

Version	Symptom Corrected
0.22	First release for Founder model.
0.21	Symptom Corrected: "Bypass Tray" was translated incorrectly in User Tools (Korean only).
0.21	Supports the Turkish and Catalan display languages. Note: Due to memory constrictions, the Russian and Norwegian display languages have been deleted to make this possible.
0.21	1. Part of the image is missing when printing onto long sheets while the machine is in Energy Saver mode.
0.20	1. An ADF original jam occurs when the memory is full. 2. The alert LED does not turn off after a paper jam is cleared. 3. Sometimes, the PC freezes after an ADF jam is cleared.
0.14	1st mass production

**Reissued: 14-Dec-07**

Model: Kir-C3	Date: 22-Sep-06	No.: RB245004a
---------------	-----------------	----------------

**RTB Reissue**

The items in bold italics have been corrected.

Subject: Firmware Release Note: Fax		Prepared by: Y.Yoshida	
From: 1st Tech. Support Sec. Service Support Dept.			
Classification:	<input type="checkbox"/> Troubleshooting <input type="checkbox"/> Mechanical <input type="checkbox"/> Paper path <input checked="" type="checkbox"/> Other (      )	<input type="checkbox"/> Part information <input type="checkbox"/> Electrical <input type="checkbox"/> Transmit/receive	<input type="checkbox"/> Action required <input type="checkbox"/> Service manual revision <input type="checkbox"/> Retrofit information

This RTB has been issued to announce the firmware release information for the Fax.

Version	Program No.	Effective Date
<b>02.00.00</b>	<b>B2765522B</b>	<b>December 2007 production</b>
01.00.00	B2765522A	1st Mass production.

Version	Modified Points or Symptom Corrected
<b>02.00.00</b>	<b><i>Other changes:</i></b> <b><i>Supports the Catalan and Turkish languages.</i></b> <b><i>For the details of this, please refer to RTB#RB245024 "Supports the Catalan and Turkish languages".</i></b> <b><i>Note: To support this feature, install all of the following firmware:</i></b> <ul style="list-style-type: none"> <li>- <b><i>System_Copy firmware ver 1.07 or later</i></b></li> <li>- <b><i>Printer firmware ver 1.03 or later</i></b></li> <li>- <b><i>Websys firmware ver 1.05 or later</i></b></li> <li>- <b><i>Scanner firmware ver 01.07 or later</i></b></li> <li>- <b><i>Fax firmware ver 02.00.00 or later</i></b></li> <li>- <b><i>FCU firmware ver 02.00.00 or later</i></b></li> </ul>
01.00.00	1st Mass production.



**Reissued: 06-May-16**

Model: Kir-C3	Date: 22-Sep-06	No.: RB245005d
---------------	-----------------	----------------

**RTB Reissue**

The items in bold italics have been corrected.

Subject: Firmware Release Note: FCU		Prepared by: A. Ishida	
From: 1st Tech Service Sect., MFP/Printer Tech Service Dept.			
Classification:	<input type="checkbox"/> Troubleshooting	<input type="checkbox"/> Part information	<input type="checkbox"/> Action required
	<input type="checkbox"/> Mechanical	<input type="checkbox"/> Electrical	<input type="checkbox"/> Service manual revision
	<input type="checkbox"/> Paper path	<input type="checkbox"/> Transmit/receive	<input type="checkbox"/> Retrofit information
	<input type="checkbox"/> Product Safety	<input type="checkbox"/> Other (      )	<input type="checkbox"/> Tier 2

This RTB has been issued to announce the firmware release information for the FCU.

Version	Program No.	Effective Date	Availability of RFU
<b><i>05.00.00</i></b>	<b><i>B8685570E</i></b>	-	<b><i>Available</i></b>
04.00.00	B8685570D	November 2011 production	Available
03.00.00	B8685570C	February 2009 production	Available
02.00.00	B8685570B	December 2007 production	Available
01.00.00	B8685570A	1st Mass production.	Available

Version	Modified Points or Symptom Corrected
<b><i>05.00.00</i></b>	<b><i>Symptom Corrected:</i></b> <b><i>If "Forwarding setting of Reception File Setting" is enabled and a fax received is transferred to a folder, an error occurs and the fax is falsely deleted.</i></b>
04.00.00	Symptoms corrected: 1. Image problem occurs with JBIG transmission if the image is sent after a JBIG reception job is interrupted. 2. Errors frequently occur when receiving from a FAX server. 3. Forwarding to a FAX folder fails.  Other changes: TEC value further improved.
03.00.00	Other changes: 1. Supports the Korean display language. 2. FAX line noise during on-hook dialing was further minimized.
02.00.00	Other changes: Supports the Catalan and Turkish languages. For the details of this, please refer to RTB#RB245024 "Supports the Catalan and Turkish languages". Note: To support this feature, install all of the following firmware: - System_Copy firmware ver 1.07 or later - Printer firmware ver 1.03 or later - Websys firmware ver 1.05 or later - Scanner firmware ver 01.07 or later - Fax firmware ver 02.00.00 or later - FCU firmware ver 02.00.00 or later

**Reissued: 06-May-16**

Model: Kir-C3		Date: 22-Sep-06	No.: RB245005d
Version	Modified Points or Symptom Corrected		
01.00.00	1st Mass production.		

**Reissued: 20-April-09**

Model: Kir-C3	Date: 22-Sep-06	No.: RB245006d
---------------	-----------------	----------------

**RTB Reissue**

The items in bold italics have been added.

Subject: Firmware Release Note: Net File		Prepared by: Y.Yoshida	
From: 1st Tech. Support Sec. Service Support Dept.			
Classification:	<input type="checkbox"/> Troubleshooting	<input type="checkbox"/> Part information	<input type="checkbox"/> Action required
	<input type="checkbox"/> Mechanical	<input type="checkbox"/> Electrical	<input type="checkbox"/> Service manual revision
	<input type="checkbox"/> Paper path	<input type="checkbox"/> Transmit/receive	<input type="checkbox"/> Retrofit information
	<input checked="" type="checkbox"/> Other ( )		

This RTB has been issued to announce the firmware release information for the Net File.

Version	Program No.	Effective Date
<b>2.03</b>	<b>B8675528E</b>	<b>May 2009 production</b>
2.02	B8675528D	July 2007 production
2.01	B8675528C	January 2007 production
2.00	B8675528B	November 2006 production
1.00	B8675528A	1st Mass production.

Version	Modified Points or Symptom Corrected
<b>2.03</b>	<b>Other changes:</b> <b>1. The web service might stall if the device settings are changed via WIM or the Operation Panel at the same time as ScanRouter is accessing the device.</b>
2.02	Symptom corrected: 1. A user's Scan to NCP connection type (Bindery or NDS) cannot be changed using the SDM for Admin Address Management Tool. 2. Accessing the document server in WIM via a single sign-on server might result in "404 Not Found". This only happens if the url used to access WIM contains a "Host Name" and "Domain Name" (The "domain name" setting in the MFP is not blank.). It does not happen if the url contains an IP address. Note: To fix this issue, all of the following firmware must be applied: - System firmware ver 1.06 or later - Websys firmware ver 1.03 or later - NFA firmware ver 2.02 or later - Printer firmware ver 1.02 or later
2.01	Symptom corrected: Documents might fail to be sent to SMB or NCP folder paths containing a mix of both 1-byte and 2-byte characters. This only happened if the folder paths were imported to the address book from a csv file via SDM for Admin.
2.00	Minor bug correction.
1.00	1st Mass production.

**Reissued: 18-Sep-14**

Model: Kir-C3	Date: 22-Sep-06	No.: RB245007i
---------------	-----------------	----------------

**RTB Reissue**

The items in bold italics have been added.

Subject: Firmware Release Note: NIB		Prepared by: Y. Kuwahara	
From: 2nd Tech Service Sect., MFP/Printer Tech Service Dept.			
Classification:	<input type="checkbox"/> Troubleshooting <input type="checkbox"/> Part information <input type="checkbox"/> Action required		
	<input type="checkbox"/> Mechanical <input type="checkbox"/> Electrical <input type="checkbox"/> Service manual revision		
	<input type="checkbox"/> Paper path <input type="checkbox"/> Transmit/receive <input type="checkbox"/> Retrofit information		
	<input checked="" type="checkbox"/> Other (       )		

This RTB has been issued to announce the firmware release information for the NIB.

Version	Program No.	Effective Date	Availability of RFU
6.19	B8675526K	May 2013 production	Available
6.17	B8675526J	August 2010 production	Available
6.16	B8675526G	December 2009 production	Available
6.15	B8675526F	May 2009 production	Available
6.14	B8675526E	February 2008 production	Available
6.10	B8675526D	July 2007 production	Available
6.07	B8675526C	January 2007 production	Available
6.06	B8675526B	November 2006 production	Available
6.04.4k	B8675526A	1st Mass production	Available

**Note: Definition of Availability of RFU via @Remote**

**"Available":** The firmware can be updated via RFU or SD card.

**"Not available":** The firmware can only be updated via SD card.

Version	Modified Points or Symptom Corrected
6.19	<p>Symptom corrected:</p> <ul style="list-style-type: none"> <li>- An httpd timeout has been implemented to prevent Web Image Monitor lockups that sometimes occurred when applications accessed the MFP by http. (GFPE#RC10060010)</li> <li>- Scan to SMB fails if the file submitted to the DFS folder in the destination and the file of the same name exist in the DFS folder.</li> <li>- If Windows Authentication is enabled, printing a large number of copies of a job might take longer than might typically be expected.</li> <li>- Chunk Transfer Encoding over an IPP port might results in print jobs being reset.</li> <li>- If SSDP = Active (Web Image Monitor &gt; Configuration &gt; Network Security), a high load on the CPU might result in Web Image Monitor locking up.</li> <li>- The MFP icon might not be shown in the Windows "Network" dialogue if SSDP is enabled. This affected Windows Vista, 2008/R2, and 7.</li> <li>- Use of an IP address to send a Scan to SMB might result in the scanned document not being sent.</li> <li>- Under very specific combinations of IP address, Subnet Mask, and Gateway address, some of the MFP's network configuration settings might revert to defaults.</li> <li>- If the device's IPP Authentication setting is enabled, the driver cannot be installed on Windows 2008 R2 SP1 or 7 SP1 using an IPP port.</li> </ul>

**Reissued: 18-Sep-14**

Model: Kir-C3		Date: 22-Sep-06	No.: RB245007i
Version	Modified Points or Symptom Corrected		
	<ul style="list-style-type: none"> <li>- Scan to SMB fails if the both of the following conditions are met. Either the device has NBT disabled or it is enabled but the device is unable to resolve the destination's NetBIOS name. One or more octets in the destination's IPv4 address contain leading zeros.</li> <li>- SC991 might occur and network functions could not be used. This occurs if DHCP and DDNS are both enabled in the device and if the DHCP server distributes to the device an FQDN that is more than 127 byte in length.</li> <li>- If "CNAME" is specified as the destination folder, Scan To Folder will abort.</li> <li>- If NBT is disabled, the destination for Scan to Folder might not be displayed and Windows authentication might fail.</li> <li>- Cannot scan to shared folders in Windows 8 <b>and Windows Server 2012</b>.</li> <li>- Cannot scan to shared folders in Mac OS X 10.7 or Mac OS X 10.8.</li> </ul>		
6.17	<p>Symptom corrected:</p> <ol style="list-style-type: none"> <li>1. Unable to Scan to SMB to Windows 7 or Windows Server 2008 R2 destinations that have Windows Live ID Sign-in assistant installed.</li> <li>2. Trying and failing to login to a Scan destination three times might result in the Scanner application stalling.</li> <li>3. Unable to Scan to SMB to Windows 98/98SE/Me/NT 4.0 destinations specified using an IP address.</li> <li>4. The SMB retry function fails to retry the sending of failed SMB transfers (Scan to SMB or Fax delivery).</li> <li>5. Unable to retrieve the Windows group name from a Windows 2008 R2 server during Windows Authentication. Because of this, logged in users will only be granted the "Available Functions" specified for them in the Addressbook.</li> <li>6. The device is unable to assign group privileges to a logged in user if that group has a name consisting of more than 20 bytes. To address this issue, the supported group name length will be increased to 40 bytes.</li> <li>7. The MFP's Windows Authentication function is unable to use Kerberos when being authenticated on a Windows 2008 or Windows 2008 R2 server. The MFP will still be successfully authenticated because it is able to fail back to NTLMv2.</li> <li>8. After changing the MFP's DNS server address or Domain name, Scan to SMB destinations specified using a hostname might not be found.</li> <li>9. The Scan to SMB "Connection Test" fails if performed on directory located directly below a DFS root. Only the "Connection Test" failed, scanning was successful and even the "Connection Test" worked if performed on any sub-directory.</li> <li>10. The device might return an SC 819 error when browsing the network using SMB. This only occurred if SMB was browsed frequently and the device was not rebooted.</li> <li>11. If the MFP's IP address is changed to an IP address of another subnet, users will not be able to browse the network (using Scan to SMB) until the MFP is rebooted.</li> <li>12. The device's SMB timeout was too short (1sec). This caused problems when being used across subnets. For this reason, it has been increased to 10 sec.</li> </ol> <p>Other changes:</p> <ol style="list-style-type: none"> <li>1. Unable to Scan to SMB to a destination that is not specified using an FQDN.</li> <li>2. Unable to Scan to SMB to destinations that are using both LM Authentication and Samba v2.x.</li> <li>3. Windows Authentication fails if the username or password includes lower-case</li> </ol>		

**Reissued: 18-Sep-14**

Model: Kir-C3		Date: 22-Sep-06	No.: RB245007i
Version	Modified Points or Symptom Corrected		
	European characters.		
6.16	<p>Symptom corrected:</p> <ol style="list-style-type: none"> <li>1. The MFP's IP address lease renewal request is incorrectly formatted and rejected by DHCP relay agents. This will result in a loss of connectivity that lasts until the MFP reinitializes the network connection (10 seconds).</li> </ol> <p>Other changes:</p> <ol style="list-style-type: none"> <li>1. Scan to Folder destinations located on Windows 7 or Windows Server 2008 R2 can now be selected by browsing.</li> <li>2. The MFP now supports CIFS, DFS and NTLM v2.</li> </ol>		
6.15	<p>Symptom corrected:</p> <ol style="list-style-type: none"> <li>1. The device might not be able to access the network once the Log collection tool is run.</li> <li>2. IPP print jobs are cancelled. This happened very infrequently.</li> <li>3. After a job consisting of a multiple of exactly 8KB (8192 bytes) is submitted via IPP, the device will no longer accept any more jobs until rebooted.</li> </ol>		
6.14	<p>Symptom corrected:</p> <ol style="list-style-type: none"> <li>1. The device will stall if a PCL job is submitted via sftp while the printer spooler (off by default) or sftp spooler (on by default) is stopped.</li> <li>2. Jobs submitted from Mac OS via AppleTalk might result in an error or be discarded completely by the printer.</li> <li>3. The connection to a WLAN might be dropped if the device has been connected for an extended period of time and was authenticated using WPA.</li> <li>4. If WLAN is enabled, an SC991 might be displayed on the Operation Panel if either of the following settings are changed: <ul style="list-style-type: none"> <li>– The Ethernet Speed is changed to any setting except "Auto Select", from the operation panel.</li> <li>– The Communication Mode is changed to "Ad hoc mode" and then User Tools is exited.</li> </ul> </li> <li>5. The Interface Speed in NIB summary will be shown as "Link down" if WLAN is enabled.</li> </ol> <p>Other changes:</p> <ol style="list-style-type: none"> <li>1. The new WLAN card is now available. (TechMail#OTS-2008-543) Note: To use this new card, System firmware (version 1.08 or later), Websys firmware (version 1.07) and NCS firmware (version 6.14 or later) needs to be applied to the device.</li> </ol>		
6.10	<p>Symptom corrected:</p> <ol style="list-style-type: none"> <li>1. The device might be unable to obtain an IP address from a DHCP Server through a DHCP Relay Agent (FPR#RE06110003/RE06110011/RC06120002).</li> <li>2. A 404 error will be returned by WIM after the "Date and time" setting is configured via a Web SmartDeviceMonitor ver.2.x Batch Configuration.</li> <li>3. The device will not be registered with a DNS server by a DHCP relay agent.</li> <li>4. The device fails to renew with the DDNS server, it will not try again.</li> <li>5. IPP clients might not print to devices that joined the network using mDNS (Bonjour).</li> <li>6. SMB folders cannot be registered in the address book. (TechMail#OTS-2007-1913)</li> <li>7. Extra steps are required if a user provides an invalid username or password for</li> </ol>		

**Reissued: 18-Sep-14**

Model: Kir-C3		Date: 22-Sep-06	No.: RB245007i
Version	Modified Points or Symptom Corrected		
	Scan to SMB. (TechMail#OTS-2007-1913)		
6.07	Symptom corrected: The device cannot login to Windows Vista via SMB.		
6.06	Some mmesg logs or portions of mmesg logs cannot be acquired using RlogTool v2. X. (TechMail#TS060625)		
6.04.4k	1st Mass production		

**Reissued: 19-Jun-12**

Model: Kir-C3	Date: 22-Sep-06	No.: RB245008e
---------------	-----------------	----------------

**RTB Reissue**

The items in bold italics have been added.

Subject: Firmware Release Note: Printer		Prepared by: M.Saiki	
From: 2nd Tech Service Sect., MFP/Printer Tech Service Dept.			
Classification:	<input type="checkbox"/> Troubleshooting <input type="checkbox"/> Mechanical <input type="checkbox"/> Paper path <input checked="" type="checkbox"/> Other (      )	<input type="checkbox"/> Part information <input type="checkbox"/> Electrical <input type="checkbox"/> Transmit/receive	<input type="checkbox"/> Action required <input type="checkbox"/> Service manual revision <input type="checkbox"/> Retrofit information

This RTB has been issued to announce the firmware release information for the Printer.

Version	Program No.	Effective Date	Availability of RFU
<b>1.11</b>	<b><i>B8675540F</i></b>	<b><i>July 2012 production</i></b>	<b><i>Available</i></b>
1.10	B8675540E	May 2009 production	Available
1.03	B8675540D	December 2007 production	Available
1.02	B8675540C	July 2007 production	Available
1.01	B8675540B	December 2006 production	Available
1.00	B8675540A	1st Mass production	Available

**Note: Definition of Availability of RFU via @Remote**
**"Available"** The firmware can be updated via RFU or SD card.

**"Not available":** The firmware can only be updated via SD card.

Version	Modified Points or Symptom Corrected
<b>1.11</b>	<b><i>Symptom corrected:</i></b> <b><i>Small rectangular images at the top of PCL5 pages (such as logos) appear skewed in printouts. (GFPR#RC06100004, GFPR#RC06120009, GFPR#RC06120008, GFPR#RC07030001, GFPR#RC07010008, GFPR#RC07040006, GFPR#RC08020001, GFPR#RC08020003, GFPR#RC08020006, GFPR#RC10070003, GFPR#RC12030004)</i></b>
1.10	Symptom corrected: 1. - The PCL5 line pitch might be printed larger than the original. - The printable area of a PCL5 page might extend beyond the border on the right side.
1.03	Other changes: Supports the Catalan and Turkish languages. For the details of this, please refer to RTB#RB245024 "Supports the Catalan and Turkish languages". Note: To support this feature, install all of the following firmware: - System_Copy firmware ver 1.07 or later - Printer firmware ver 1.03 or later - Websys firmware ver 1.05 or later - Scanner firmware ver 01.07 or later - Fax firmware ver 02.00.00 or later - FCU firmware ver 02.00.00 or later



**Reissued: 19-Jun-12**

Model: Kir-C3		Date: 22-Sep-06	No.: RB245008e
Version	Modified Points or Symptom Corrected		
1.02	<ol style="list-style-type: none"> <li>Various printing anomalies when printing PowerPoint2007 jobs that have Autoshapes and shadows.</li> <li>This can occur if printing with both of the following RPCS driver settings: <ul style="list-style-type: none"> <li>Resolution: 1800 x 600 dpi</li> <li>Job Load Distribution: Shift load to driver</li> </ul> </li> <li>PCL jobs containing character codes that are not on the font SD card might cause the device to stall.</li> <li>Jobs containing bitmapped PCL fonts might cause the device to stall.</li> <li>When the job is created using SAP DeviceType or Barcode &amp;OCR package for SAP System DT, the following issues will occur. <ul style="list-style-type: none"> <li>When sending a BOP job, the printer status stays at "Processing" and the job is not printed.</li> <li>Memory leak occurs when printing a bitmap font with insufficient memory condition.</li> </ul> </li> <li>Accessing the document server in WIM via a single sign-on server might result in "404 Not Found". This only happens if the url used to access WIM contains a "Host Name" and "Domain Name" (The "domain name" setting in the MFP is not blank.). It does not happen if the url contains an IP address. Note: To fix this issue, all of the following firmware must be applied: <ul style="list-style-type: none"> <li>System firmware ver 1.06 or later</li> <li>Websys firmware ver 1.03 or later</li> <li>NFA firmware ver 2.02 or later</li> <li>Printer firmware ver 1.02 or later</li> </ul> </li> </ol>		
1.01	<p>Other changes:</p> <ol style="list-style-type: none"> <li>The device supports Unicode v3.0 fonts. Unicode v3.0 fonts for Japanese/Korean/Traditional Chinese/Simplified Chinese are only available with the Unicode Font Package for SAP.</li> </ol> <p>Symptom corrected:</p> <ol style="list-style-type: none"> <li>PCL data might be printed as garbage characters after several hundred pages of PCL data are printed without a power-off. (Techmail#TS060753).</li> <li>PCL jobs that include separator pages might be printed as garbage characters (FPR#RC06040009/RC0610007).</li> <li>PDF files printed using Adobe Acrobat and the RPCS driver might be missing characters or portions of characters. This occurs if both of the following conditions are met: <ul style="list-style-type: none"> <li>"Shift load to printer" selected for the RPCS driver's Job Load Distribution setting.</li> </ul> </li> </ol> <p>Image rotation required: Portrait document to LEF paper -or- Landscape document to SEF paper.</p>		
1.00	1st Mass production		

**Reissued: 18-Feb-09**

Model: Kir-C3	Date: 22-Sep-06	No.: RB245009a
---------------	-----------------	----------------

**RTB Reissue**

The items in bold italics have been added.

Subject: Firmware Release PS		Prepared by: Y.Yoshida	
From: 1st Tech. Support Sec. Service Support Dept.			
Classification:	<input type="checkbox"/> Troubleshooting <input type="checkbox"/> Mechanical <input type="checkbox"/> Paper path <input checked="" type="checkbox"/> Other (      )	<input type="checkbox"/> Part information <input type="checkbox"/> Electrical <input type="checkbox"/> Transmit/receive	<input type="checkbox"/> Action required <input type="checkbox"/> Service manual revision <input type="checkbox"/> Retrofit information

This RTB has been issued to announce the firmware release information for PS.

Version	Program No.	Effective Date
<b><i>1.01</i></b>	<b><i>B8965105A</i></b>	<b><i>February 2009 production</i></b>
1.00	B8965105	1st Mass production.

Version	Modified Points or Symptom Corrected
<b><i>1.01</i></b>	<b><i>Symptom corrected:</i></b> <b><i>1. The front and back sides of duplex pages might be reversed.</i></b> <b><i>2. The device might print more pages or fewer pages than the page range assigned by certain applications.</i></b> <b><i>3. "Blank Page Print" might still print blank pages.</i></b>
1.00	Mass Production

**Reissued: 28-Jul-10**

Model: <b>K-C3</b>	Date: 22-Sep-06	No.: RB245010b
--------------------	-----------------	----------------

**RTB Reissue**

The items in bold italics have been corrected.

Subject: Firmware Release Note: RFax		Prepared by: M. Saiki	
From: 2nd Overseas Tech Support Sec., 2nd PQM Dept.			
Classification:	<input type="checkbox"/> Troubleshooting <input type="checkbox"/> Part information <input type="checkbox"/> Action required		
	<input type="checkbox"/> Mechanical <input type="checkbox"/> Electrical <input type="checkbox"/> Service manual revision		
	<input type="checkbox"/> Paper path <input type="checkbox"/> Transmit/receive <input type="checkbox"/> Retrofit information		
	<input checked="" type="checkbox"/> Other (      )		

This RTB has been issued to announce the firmware release information for the **RFax**.

Version	Program No.	Effective Date
<b>03.00.00</b>	<b>B8675524C</b>	<b>August 2010 production</b>
02.00.00	B8675524B	January 2007 production
01.00.00	B8675524A	1st Mass production

Version	Modified Points or Symptom Corrected
<b>03.00.00</b>	<b>Symptom corrected:</b> <ol style="list-style-type: none"> <li><b>Cannot communicate with the InnovaPhone VoIP-Gateway IP305 (H.323/SIP).</b></li> <li><b>Connection error sometimes occurs when a Ricoh IP-FAX receives a fax from the Siemens IP-PBX HiPath8000.</b></li> <li><b>The machine transmits the DIS after receiving a fax connection request from the Siemens VoIP-Gateway, but the gateway does not send the machine the DSC.</b></li> <li><b>Sometimes, IP-FAX sending and receiving do not work,</b></li> </ol> <b>Note:</b> <b>Please be advised that the delay timer of re-invite message (bit3,4 of IPFAX09 to 1,0 = 1 sec) under Siemens HiPath8000 needs to be set.</b>
02.00.00	Symptom corrected: <ol style="list-style-type: none"> <li>SC819 (Kernel mismatch error) sometimes occurs when the Wireless LAN and FAX are installed on the machine.</li> </ol>
01.00.00	1st Mass production

**Reissued: 07-May-09**

Model: Kir-C3	Date: 22-Sep-06	No.: RB245011d
---------------	-----------------	----------------

**RTB Reissue**

The items in bold italics have been added.

Subject: Firmware Release Note: Scanner		Prepared by: Y.Yoshida	
From: 1st Tech. Support Sec. Service Support Dept.			
Classification:	<input type="checkbox"/> Troubleshooting	<input type="checkbox"/> Part information	<input type="checkbox"/> Action required
	<input type="checkbox"/> Mechanical	<input type="checkbox"/> Electrical	<input type="checkbox"/> Service manual revision
	<input type="checkbox"/> Paper path	<input type="checkbox"/> Transmit/receive	<input type="checkbox"/> Retrofit information
	<input checked="" type="checkbox"/> Other (       )		

This RTB has been issued to announce the firmware release information for the Scanner.

Version	Program No.	Effective Date
<b>01.09</b>	<b>B8675525E</b>	<b>May 2009 production</b>
01.08	B8675525D	February 2008 production
01.07	B8675525C	December 2007production
01.06	B8675525B	January 2007 production
01.05	B8675525A	1st Mass production.

Version	Modified Points or Symptom Corrected
<b>01.09</b>	<b>Symptom corrected:</b> <b>1. Scan to NCP fails if all of the following conditions are met:</b> - The destination is specified using the IP address. - The Novell server and the device are in different subnets. - The subnet routers filter SLP multicasts. <b>Note: Requires System firmware (version 1.10 or later) and Scanner firmware (version 01.09 or later).</b> <b>2. Scan to NCP fails or takes a long time to complete if the IPX protocol is used and there are more than 2 Novell Directory Services (NDS) servers in the network hierarchy.</b> <b>Note: Requires System firmware (version 1.10 or later) and Scanner firmware (version 01.09 or later).</b>
01.08	Symptom corrected: 1. Scan to NCP problems. (TechMail#TS070022) Note: Both System firmware (version 1.08 or later) and Scanner firmware (version 01.08 or later) need to be applied to fix this issue.

**Reissued: 07-May-09**

Model: Kir-C3		Date: 22-Sep-06	No.: RB245011d
Version	Modified Points or Symptom Corrected		
01.07	<p>Other changes: Supports the Catalan and Turkish languages. For the details of this, please refer to RTB#RB245024 "Supports the Catalan and Turkish languages".</p> <p>Note: To support this feature, install all of the following firmware:</p> <ul style="list-style-type: none"><li>- System_Copy firmware ver 1.07 or later</li><li>- Printer firmware ver 1.03 or later</li><li>- Websys firmware ver 1.05 or later</li><li>- Scanner firmware ver 01.07 or later</li><li>- Fax firmware ver 02.00.00 or later</li><li>- FCU firmware ver 02.00.00 or later</li></ul>		
01.06	<p>Symptom corrected: Folders with names containing Chinese (Simplified) characters might not be properly displayed using Scan to SMB from the operation panel. Use of these folders as a Scan to SMB destination might result in an error message.</p> <p>Note: Both System firmware (version 1.05 or later) and Scanner firmware (version 01.06 or later) need to be applied to fix this issue.</p>		
01.05	1st Mass production		

**Reissued: 21-Apr-21**

Model: Kir-C3	Date: 22-Sep-06	No.: RB245012j
---------------	-----------------	----------------

**RTB Reissue**

The items in bold italics have been added.

Subject: Firmware Release Note: System/Copy		Prepared by: M.Saiki	
From: 2nd Overseas Tech Support Sec., 2nd PQM Dept.			
Classification:	<input type="checkbox"/> Troubleshooting	<input type="checkbox"/> Part information	<input type="checkbox"/> Action required
	<input type="checkbox"/> Mechanical	<input type="checkbox"/> Electrical	<input type="checkbox"/> Service manual revision
	<input type="checkbox"/> Paper path	<input type="checkbox"/> Transmit/receive	<input type="checkbox"/> Retrofit information
	<input checked="" type="checkbox"/> Other (       )		

This RTB has been issued to announce the firmware release information for the **System/Copy**.

Version	Program No.	Effective Date
<b>1.13</b>	<b>B2765521L</b>	<b>April 2011 production</b>
1.12	B2765521K	August 2010 production
1.11	B2765521J	January 2010 production
1.10	B2765521H	May 2009 production
1.09.1	B2765521G	December 2008 production
1.08	B2765521F	February 2008 production
1.07	B2765521E	December 2007 production
1.06	B2765521D	July 2007 production
1.05	B2765521C	January 2007 production
1.01	B2765521B	November 2006 production
1.00.1	B2765521A	1st Mass production

Version	Modified Points or Symptom Corrected
<b>1.13</b>	<b><i>Supports the K-C3.5L Asia 18 CPM model.</i></b> <b><i>Important: When installing the Feature Expansion Board Type 2000 on this model, make sure to update the System/Copy firmware to this version or later. Then, enable the plug and play setting (SP5-907-001).</i></b>
1.12	Symptoms corrected:  1. Translation errors in Russian. 1)Error:Авто R/E Correct:Ав.ум/ув  2)Error:Цвет/Количество Correct:Введите коэффиц.масштаба.  3)Error:Цветовой баланс

**Reissued: 21-Apr-21**

Model: Kir-C3	Date: 22-Sep-06	No.: RB245012j
	<p>Correct:Авт.уменьш./увеличен.</p> <p>4)Error:Установить цвет Correct:Комбинир./Серии</p> <p>5)Error:Черный Correct:Ориентац.ориг.</p> <p>6)Error:Темнее Correct:Дуплекс</p> <p>2. Translation error in French of when E-mail TX data error occurs. Error:Err. donnees RX e-mail Correct:Err. donnees TX e-mail</p>	
1.11	<p>Symptom corrected:</p> <ol style="list-style-type: none"> <li>The vendor code contained in the controller board Mac address was updated from "00-00-74" to "00-26-73" (all possible Mac addresses using the old vendor code have been exhausted).</li> <li>IPv6 Type 0 Route Headers allow sender to control routing (CVE-2007-2242).</li> </ol>	
1.10	<p>Symptom corrected:</p> <p>The following @Remote-related corrections/changes were made:</p> <ol style="list-style-type: none"> <li>"Toner order failed" is displayed when RC Gate is not connected to an @Remote registered Kir-C3.</li> <li>The following error messages were deleted from the operation panel display, as it is not necessary to notify end users of these conditions (and therefore would be confusing): "Check the proxy settings. If the same error occurs,....." (embedded RC Gate) "Cannot connect to the server for remote diagnostic." (external RC Gate)</li> <li>An error occurs during RFU.</li> </ol> <p>Other changes:</p> <ol style="list-style-type: none"> <li>Error code 54 was added. Note: This is displayed when an error occurs during an embedded RC Gate RFU.</li> <li>Scan to NCP fails if all of the following conditions met: <ul style="list-style-type: none"> <li>The destination is specified using the IP address.</li> <li>The Novell server and the device are in different subnets.</li> <li>The subnet routers filter SLP multicasts.</li> </ul> Note: Requires System firmware (version 1.10 or later) and Scanner firmware (version 01.09 or later).</li> <li>Scan to NCP fails or takes long time to complete if the IPX protocol is used and there are more than 2 Novell Directory Services (NDS) servers in the network hierarchy. Note: Requires System firmware (version 1.10 or later) and Scanner firmware</li> </ol>	

**Reissued: 21-Apr-21**

Model: Kir-C3		Date: 22-Sep-06	No.: RB245012j
	(version 01.09 or later).		
	7. Unwanted line might be added to the bottom of each page.		
1.09.1	Support Korean Language		
1.08	<p>Symptom corrected:</p> <ol style="list-style-type: none"> <li>Scan to NCP problems. (TechMail#TS070022) Note: Both System firmware (version 1.08 or later) and Scanner firmware (version 1.08 or later) need to be applied to fix this issue.</li> </ol> <p>Other changes:</p> <ol style="list-style-type: none"> <li>The new WLAN card is now available. (TechMail#OTS-2008-543) Note: To use this new card, System firmware (version 1.08 or later), Websys firmware (version 1.07) and NCS firmware (version 6.14 or later) needs to be applied to the device.</li> </ol>		
1.07	<p>Other changes:</p> <p>Supports the Catalan and Turkish languages. For the details of this, please refer to RTB#RB245024 "Supports the Catalan and Turkish languages".</p> <p>Note: To support this feature, install all of the following firmware:</p> <ul style="list-style-type: none"> <li>- System_Copy firmware ver 1.07 or later</li> <li>- Printer firmware ver 1.03 or later</li> <li>- Websys firmware ver 1.05 or later</li> <li>- Scanner firmware ver 01.07 or later</li> <li>- Fax firmware ver 02.00.00 or later</li> <li>- FCU firmware ver 02.00.00 or later</li> </ul>		
1.06	<p>Symptom corrected:</p> <ol style="list-style-type: none"> <li>Entries such as "usercode/username" in the Job Log or Access Log might be shown incorrectly in Web SmartDeviceMonitor ver 2.x. This only occurs if there are a large number of entries.</li> <li>The device sporadically fails to login to an Integration server.</li> <li>Accessing the document server in WIM via a single sign-on server might result in "404 Not Found". This only happens if the url used to access WIM contains a "Host Name" and "Domain Name" (The "domain name" setting in the MFP is not blank.). It does not happen if the url contains an IP address.</li> </ol> <p>Note: To fix this issue, all of the following firmware must be applied:</p> <ul style="list-style-type: none"> <li>- System firmware ver 1.06 or later</li> <li>- Websys firmware ver 1.03 or later</li> <li>- NFA firmware ver 2.02 or later</li> <li>- Printer firmware ver 1.02 or later</li> </ul>		
1.05	<p>Symptom corrected:</p> <ol style="list-style-type: none"> <li>Translation errors.</li> <li>Some characters are garbled when displayed (Taiwanese).</li> <li>The device is unable to follow an LDAP search reference if the device and LDAP server are communicating via SSL. This problem affects the following functions: <ul style="list-style-type: none"> <li>- LDAP Search</li> <li>- LDAP Connection Test</li> <li>- LDAP Authentication</li> <li>- Windows Authentication</li> </ul> </li> <li>Folders with names containing Chinese (Simplified or Traditional) characters might not be properly displayed using Scan to NCP from the operation panel.</li> <li>Folders with names containing Chinese (Simplified) characters might not be</li> </ol>		



**Reissued: 21-Apr-21**

Model: Kir-C3		Date: 22-Sep-06	No.: RB245012j
	<p>properly displayed using Scan to SMB from the operation panel. Use of these folders as a Scan to SMB destination might result in an error message.  Note: Both System firmware (version 1.05 or later) and Scanner firmware (version 01.06 or later) need to be applied to fix this issue.</p> <p>6. SC997 might be displayed on the operation panel when a user logs in using Windows or LDAP Authentication.</p>		
1.01	<p>Symptom corrected:</p> <ol style="list-style-type: none"> <li>1. The FAX function cannot be started after the controller is reset.</li> <li>2. "Please wait" cannot be cleared after the machine recovers from Energy Saver mode.</li> <li>3. SC819 occurs if the power is turned OFF and ON during a remote firmware update (RFU)</li> <li>4. Supports Day Light Savings Time. The default values for the following SP modes were changed (NA version only): <ul style="list-style-type: none"> <li>– SP5307-003: 0x03200210</li> <li>– SP5307-004: 0x11100200</li> </ul> </li> <li>5. An extremely large number of jobs might cause the device to stall.</li> <li>6. Horizontal line printed across the tops of some pages in a job. This might occur in cases when a mid-job tray change is required between 2 trays that have different paper orientations (LEF/SEF).</li> </ol>		
1.00.1	1st Mass production		

**Reissued: 18-Feb-08**

Model: Kir-C3	Date: 22-Sep-06	No.: RB245013d
---------------	-----------------	----------------

**RTB Reissue**

The items in bold italics have been corrected.

Subject: Firmware Release Note: Web System		Prepared by: Y.Yoshida	
From: 1st Tech. Support Sec. Service Support Dept.			
Classification:	<input type="checkbox"/> Troubleshooting	<input type="checkbox"/> Part information	<input type="checkbox"/> Action required
	<input type="checkbox"/> Mechanical	<input type="checkbox"/> Electrical	<input type="checkbox"/> Service manual revision
	<input type="checkbox"/> Paper path	<input type="checkbox"/> Transmit/receive	<input type="checkbox"/> Retrofit information
	<input checked="" type="checkbox"/> Other (       )		

This RTB has been issued to announce the firmware release information for the Web System.

Version	Program No.	Effective Date
<b>1.07</b>	<b>B8675527E</b>	<b>February 2008 production</b>
1.05	B8675527D	December 2007 production
1.03	B8675527C	July 2007 production
1.02.3	B8675527B	January 2007 production
1.02.2	B8675527A	1st Mass production.

Version	Modified Points or Symptom Corrected
<b>1.07</b>	<p><b>Symptom corrected:</b></p> <ol style="list-style-type: none"> <li><b><i>The error message "Method Not Allowed" might be displayed in the web browser of a client that clicks a link in WIM's "To Link Page" page.</i></b></li> <li><b><i>Logged in users can change WIM's "Configuration &gt; System&gt; Device Name" setting without being granted the necessary privileges.</i></b></li> </ol> <p><b>Other changes:</b></p> <ol style="list-style-type: none"> <li><b><i>The new WLAN card is now available. (TechMail#OTS-2008-543)</i></b>  <b><i>Note: To use this new card, System firmware (version 1.08 or later), Websys firmware (version 1.03) and NCS firmware (version 6.14 or later) needs to be applied to the device.</i></b></li> </ol>
1.05	<p>Other changes:</p> <p>Supports the Catalan and Turkish languages.  For the details of this, please refer to RTB#RB245024 "Supports the Catalan and Turkish languages".</p> <p>Note: To support this feature, install all of the following firmware:</p> <ul style="list-style-type: none"> <li>- System_Copy firmware ver 1.07 or later</li> <li>- Printer firmware ver 1.03 or later</li> <li>- Websys firmware ver 1.05 or later</li> <li>- Scanner firmware ver 01.07 or later</li> <li>- Fax firmware ver 02.00.00 or later</li> <li>- FCU firmware ver 02.00.00 or later</li> </ul>
1.03	<p>Symptom corrected:</p> <ol style="list-style-type: none"> <li>WebImageMonitor contained wording errors in Traditional Chinese or Simplified Chinese.</li> </ol>

**Reissued: 18-Feb-08**

Model: Kir-C3		Date: 22-Sep-06	No.: RB245013d
Version	Modified Points or Symptom Corrected		
	<ol style="list-style-type: none"> <li>2. WebImageMonitor contained number errors in Russian. <ul style="list-style-type: none"> <li>- "Tray 2" was shown as "Tray 3".</li> <li>- "Tray 3" was shown as "Tray 4".</li> <li>- "Tray 4" was shown as "Tray 5".</li> </ul> </li> <li>3. WebImageMonitor contained wording errors. <ul style="list-style-type: none"> <li>- "IPv4" was shown as "IPv5" in Russian.</li> <li>- "IPv6" was shown as "IPv7" in Russian.</li> <li>- "Type de papier standard" was shown as "Type de papier utilisateur" in French.</li> <li>- "RC Gate Firmware bijwerken" was shown as "RS Gate Firmware bijwerken" in Dutch.</li> </ul> </li> <li>4. Accessing the document server in WIM via an single sign-on server might result in "404 Not Found". This only happens if the url used to access WIM contains a "Host Name" and "Domain Name" (The "domain name" setting in the MFP is not blank.). It does not happen if the url contains an IP address. <ul style="list-style-type: none"> <li>- Note: To fix this issue, all of the following firmware must be applied:</li> <li>- System firmware ver 1.06 or later</li> <li>- Websys firmware ver 1.03 or later</li> <li>- NFA firmware ver 2.02 or later</li> <li>- Printer firmware ver 1.02 or later</li> </ul> </li> <li>5. The XSS vulnerability on WIM. (TechMail#OTS-2007-2118)</li> <li>6. Using WebImageMonitor in the Safari browser, address book back-up files cannot be downloaded.</li> </ol>		
1.02.3	Symptom corrected: <ol style="list-style-type: none"> <li>1. A notification email is not sent if manual email reception is performed while the machine is receiving an Email Request email.</li> <li>2. Web Image Monitor does not function if an Address Book restore is cancelled.</li> <li>3. The device might stop replying to On-Demand Email Notification requests until the power is cycled if the device receives 10 or more requests at a time.</li> <li>4. The WebImageMonitor service is stopped if a restoration of the addressbook is cancelled before completion. If a user tries to access WebImageMonitor, a 404 error will be returned.</li> </ol>		
1.02.2	1st Mass production.		

**Reissued: 23-Feb-09**

Model: Kir-C3	Date: 17-Nov-06	No.: RB245014e
---------------	-----------------	----------------

**RTB Reissue**

The items in bold italics have been added.

Subject: Firmware Release Note: Printer/Scanner(GDI without NIC)		Prepared by: Y.Yoshida	
From: 1st Tech. Support Sec. Service Support Dept.			
Classification:	<input type="checkbox"/> Troubleshooting <input type="checkbox"/> Mechanical <input type="checkbox"/> Paper path <input checked="" type="checkbox"/> Other (      )	<input type="checkbox"/> Part information <input type="checkbox"/> Electrical <input type="checkbox"/> Transmit/receive	<input type="checkbox"/> Action required <input type="checkbox"/> Service manual revision <input type="checkbox"/> Retrofit information

This RTB has been issued to announce the Printer/Scanner firmware release history for models without the NIC.

Version	Program No.	Effective Date
<b>1.97</b>	<b>B8655571G</b>	<b>February 2009 production</b>
1.96	B8655571F	October 2008 production
1.95	B8655571E	April 2008 production
1.93	B8655571D	January 2008 production
1.88	B8655571C	January 2007 production
1.86	B8655571B	1st Mass production.

Version	Modified Points or Symptom Corrected
<b>1.97</b>	<b><i>Symptom corrected: Nothing is displayed on the LCD screens for the Printer and Scanner when Korean is selected as the display language.</i></b>
1.96	Symptom corrected: 1. When the display language is set to Russian, the LCD contents are displayed in Turkish. 2. When the display language is set to Norwegian, the LCD contents are displayed in Catalanian.
1.95	To receive WHQL certification for Windows Vista, a unique USB serial number has been assigned to each device.
1.93	This software change is to be unified with the GreatWall-C2 launch.
1.88	Symptom corrected. An extra blank page is added to the end of duplex jobs with an odd number of pages.  Important: 1. To fix this symptom, install this firmware version (or newer) AND update the driver to ver0.78 or newer. 2. If you only upgrade the firmware (and not the driver), the printer function will not work.
1.86	1st Mass production.

**Reissued: 07-Apr-10**

Model: Kir-C3	Date: 17-Nov-06	No.: RB245015f
---------------	-----------------	----------------

**RTB Reissue**

The items in bold italics have been added.

Subject: Firmware Release Note: Printer/Scanner(GDI with NIC)		Prepared by: M.Saiki	
From: 2nd Overseas Tech Support Sec., 2nd PQM Dept.			
Classification:	<input type="checkbox"/> Troubleshooting <input type="checkbox"/> Mechanical <input type="checkbox"/> Paper path <input checked="" type="checkbox"/> Other (      )	<input type="checkbox"/> Part information <input type="checkbox"/> Electrical <input type="checkbox"/> Transmit/receive	<input type="checkbox"/> Action required <input type="checkbox"/> Service manual revision <input type="checkbox"/> Retrofit information

This RTB has been issued to announce the Printer/Scanner firmware release history for models with the NIC.

Version	Program No.	Effective Date
<b>1.98</b>	<b><i>B8665571H</i></b>	<b><i>June 2010 production</i></b>
1.97	B8665571G	February 2009 production
1.96	B8665571F	October 2008 production
1.95	B8665571E	April 2008 production
1.93	B8665571D	February 2008 production
1.88	B8665571C	January 2007 production
1.86	B8665571B	1st Mass production

Version	Modified Points or Symptom Corrected
<b>1.98</b>	<b><i>The vendor code contained in the controller board Mac address was updated from "00-00-74" to "00-26-73" (The number of available MAC address codes used on model K-C3 has been depleted. Therefore, a new vendor code has been assigned.).</i></b>
1.97	Symptom corrected: Nothing is displayed on the LCD screens for the Printer and Scanner when Korean is selected as the display language.
1.96	Symptom corrected: 1. When the display language is set to Russian, the LCD contents are displayed in Turkish. 2. When the display language is set to Norwegian, the LCD contents are displayed in Catalanian.
1.95	Symptom corrected. 1. To receive WHQL certification for Windows Vista, a unique USB serial number has been assigned to each device.  Following symptom has been corrected: 1. No response to SNMP 'get-request' from the MFP.
1.93	This software change is to be unified with the GreatWall-C2 launch
1.88	Symptom corrected. An extra blank page is added to the end of duplex jobs with an odd number of pages.  Important:

**Reissued: 07-Apr-10**

Model: Kir-C3		Date: 17-Nov-06	No.: RB245015f
Version	Modified Points or Symptom Corrected		
	<ol style="list-style-type: none"><li>1. To fix this symptom, install this firmware version (or newer) AND update the driver to ver0.78 or newer.</li><li>2. If you only upgrade the firmware (and not the driver), the printer function will not work.</li></ol>		
1.86	1st Mass production		

**Reissued: 23-Jan-08**

Model: Kir-C3	Date: 11-Jul-07	No.: RB245016a
---------------	-----------------	----------------

**RTB Reissue**

The items in bold italics have been corrected.

Subject: Firmware Release Note: Security Module		Prepared by: Y.Yoshida	
From: 1st Tech. Support Sec. Service Support Dept.			
Classification:	<input type="checkbox"/> Troubleshooting	<input type="checkbox"/> Part information	<input type="checkbox"/> Action required
	<input type="checkbox"/> Mechanical	<input type="checkbox"/> Electrical	<input type="checkbox"/> Service manual revision
	<input type="checkbox"/> Paper path	<input type="checkbox"/> Transmit/receive	<input type="checkbox"/> Retrofit information
	<input checked="" type="checkbox"/> Other (       )		

This RTB has been issued to announce the Security Module firmware release history for model K-C3.

Version	Program No.	Effective Date
<b>1.02</b>	<b><i>B2765523A</i></b>	<b><i>February 2008 production</i></b>
1.01	B2765523	1st Mass production.

Version	Modified Points or Symptom Corrected
<b>1.02</b>	<b><i>Symptom corrected:</i></b> <b><i>1. An SSL2.0 client code fails to properly check for NULL (CVE-2006-4343). (TechMail#OTS-2008-185)</i></b> <b><i>2. Multiple RSA implementations fail to properly handle signatures (CVE-2006-4339). (TechMail#OTS-2008-276).</i></b>
1.01	1st Mass production.

**Reissued: 08-Feb-07**

Model: Kir-C3	Date: 30-Nov-06	No.: RB245017a
---------------	-----------------	----------------

**RTB Reissue**

The items in bold italics have been corrected.

Subject: ROM History for BICU for K-C3Lb, C3Lcd, C3b, C3cd		Prepared by: Y.Murata	
From: 1st Tech. Support Sec. Service Support Dept.			
Classification:	<input type="checkbox"/> Troubleshooting	<input type="checkbox"/> Part information	<input type="checkbox"/> Action required
	<input type="checkbox"/> Mechanical	<input type="checkbox"/> Electrical	<input type="checkbox"/> Service manual revision
	<input type="checkbox"/> Paper path	<input type="checkbox"/> Transmit/receive	<input type="checkbox"/> Retrofit information
	<input type="checkbox"/> Product Safety	<input checked="" type="checkbox"/> Other (      )	

We hereby inform you of the BICU\_CD firmware history for the following models.

B268-39 Kir-C3**Lb**: 16cpm simplex machine with GDI/GW controller (AA: GER)

B269-39 Kir-C3**Lcd**: 20cpm duplex machine with GDI/GW controller (AA: GER)

B276-17 Kir-C3**b**: 16cpm simplex machine (NA: GER)

B276-66 Kir-C3**b**: 16cpm simplex machine with GDI/GW controller (EU: info)

B276-67 Kir-C3**b**: 16cpm simplex machine with GDI/GW controller (EU: GER)

B277-17 Kir-C3**cd**: 20cpm duplex machine (NA: GER)

B277-66 Kir-C3**cd**: 20cpm duplex machine with GDI/GW controller (EU: info)

B277-67 Kir-C3**cd**: 20cpm duplex machine with GDI/GW controller (EU: GER)

Version	Program No.	Effective Date
<b>0.21</b>	<b>B2765540B</b>	<b>February 2007 production</b>
0.20	B2765540A	1st mass production

Version	Symptom Corrected
<b>0.21</b>	<b>Symptom corrected:</b> <b>Part of the image is missing when printing onto long sheets while the machine is in Energy Saver mode.</b>
0.20	1st mass production



Model: Kir-C3 (Panda-C2)		Date: 6-Dec-06	No.: RB245018
Subject: Technical information for Panda-C2		Prepared by: M. Ishihara	
From: 1st Tech. Support Sec. Service Support Dept.			
Classification:	<input type="checkbox"/> Troubleshooting <input type="checkbox"/> Mechanical <input type="checkbox"/> Paper path <input type="checkbox"/> Product Safety	<input type="checkbox"/> Part information <input type="checkbox"/> Electrical <input type="checkbox"/> Transmit/receive <input checked="" type="checkbox"/> Other (     )	<input type="checkbox"/> Action required <input type="checkbox"/> Service manual revision <input type="checkbox"/> Retrofit information

This RTB shows the differences from the Kir-C3a.

## ● Overview

This model is a simple copier, with no DF, duplex, FAX, Printer or Scanner functions.

- Base model: Kir-C3a (B245-17, 19, 22, 24, 26, 27, 28, 29)
- **Model Name: RICOH Aficio MP 1800 (EDP: 413599)**
- **Code: B245-21**
- Options: Universal Handle (Accessibility Handle Type A, B272-17, EDP: 412933)

**Note:** This is the only option that can be used with this product. It is a common option with the Great Wall-C1.

## ● Differences from the Kir-C3a

### 1. Basic Specifications

- **Copy Speed: 18cpm** (15cpm for Kir-C3a)
- **Warm-up time: 25 sec.** (10 sec. for Kir-C3a)
- Options: No option except the above handle (ADF for Kir-C3a)
- **Platen cover: Standard**

### 2. Units:

- Fusing: 1 Fusing Lamp (2 Fusing Lamps for Kir-C3a)
- **Note:** The fusing solenoid was removed due to the change in warm-up time from 10 to 25 sec.
- Unique PSU (some parts were removed from the Kir-C3a PSU due to the changes in the fusing section).
- DF: Removed (there is no DF),
- Unique BiCU.
- **The original size detection sensor was removed.**
- **The paper size detection sensor for the by-pass feed table was removed.**

### 3. Differences in the Service Manual

## Installation

-Copier Installation-

Accessory Check

No.	Description	Q'ty
1	Sheet : Name : Tel : CHN	1
2	Decal : Certificate	1
3	Guarantee Sheet	1
4	Operating Instructions	1
5	Toner	1
6	Developer	1
7	Seal : Lifting Grip	1

## Troubleshooting

### SCs:

- SCs common to the Panda-C2 and Kir-C3:

Original scanning section: SC 101, 120, 121, 143, 144, 145, 193, 198

Image processing section: SC 302, 320, 321, 322, 350, 390, 391, 392, 401, 402

Paper feed/transport/fusing: SC 500, 541, 542, 543, 544, 545, 546, 547, 559, 590

Others: SC928, 981, 982

- SCs that were changed on the Panda-C2:

SC 542 Fusing Temperature warm-up error (center):

The fusing temperature rises less than 9 degrees (7 degrees for K-C3a) within 3 seconds (2 seconds for K-C3a), and this happens 5 times in a row. This fusing temperature is not detected within 35 seconds (25 seconds for K-C3) or 90 seconds (35 seconds for K-C3a) under low-temperature conditions.

SC 545 Fusing lamps overheat error (error):

After the fusing temperature reaches the target temperature, the fusing lamp does not turn off within 15 seconds (12 seconds for K-C3a).

## Service Tables

### -SP Mode Table-

- The following SPs can be accessed, but **do not change these SP values**. This is because this model is for the China market only.

- SP5-807-001 Area Selection
- SP-5-907-001 Plug & Play Setting

- SP/UP settings unique to the Panda-C2:

None (No new SPs/Ups)

- SPs that are different on the Panda-C2:

- SP1-103-001 Fusing Idling **0=No**, 1=Yes (*Reload*)

#### 1-105 Fusing Temperature Adjustment

-003 Standby-Center (160 - **175** -190)

-005 Copying-Center (160 - **175** - 190)

-007 Low Level 2-Center (0 - **60** - 100)

-009 Thick-Center (160- **185** - 195)

- SP1-107 Fusing Soft Start

-001 Warm up Soft Start 0=6 cycles, 1=10 cycles, **2=20 cycles**

-002 Other Soft Start 0=6 cycles, 1=10 cycles, **2=20 cycles**

- SP1-108-001Set – Fusing Start **0=1 sec**. 1=2 sec. 2=3 sec

- SPs common to the Panda-C2 and Kir-C3:

#### 1. Paper feed/Transport/Fusing

SP1-001-001, 002, -002-001, 005, -003-001,004, -103-001, -105-003,005,007,009, -106-001, -107-001,002, -108-001, -109-001, -110-001, -159-001, -902-001, -903-001, -911-001.

#### 2. Drum Unit

SP2-001-001,002, -101-001,002,003,004, -201-001,002, -213-001, -214-001, -220-001, -221- 001,002,003,004,005,006, -301-001,002,004, -802-001, 906-001,002, -908-001, -915-001, -921-001, -922-001, -923-001, -925-001, -926-001, -927-001, -928-001, -929-001,002, -994-001, -996-001, -998-001.

Model: Kir-C3 (Panda-C2)

Date: 6-Dec-06

No.: RB245018

### 3. Original scanning

SP4-008-001, -009-001, -010-001, -011-001, -012-001,002,003,004,  
 SP4-013-001, -015-001,002, -428-001, -901-002,003,004,005,006,010,011,012,  
 -902-001, -903-001, -904-001, -905-001, -921-001, -922-001, -922-001, -923-  
 001, -926-001, -927-001, -928-001, -929-001, -930-001, -931-001, -932-001,  
 -941-001.

### 4. Operation Mode/System

SP5-001-001, -104-001, -501-001, -801-002, -802-001, -803-\*\*\*, -804-\*\*\*, -807-  
 001, -811-001, -812-001,002, -824-001, -825-001, -827-001, -901-0101,  
 -902-001, -907-001, -990-001,002,003,004,005.

### 5. Logging

SP7-001-001, -401-001, -403-001, -502-001, -504-001,010,050,070,120,121,122,  
 -507-001, -801-002, -803-001, -804-001, -807-001, -808-001, -810-001,  
 -832-001, -991-001,003,004,005, -992-001,005.

### 6. History Logging

SP8-192-001, -381-001, -382-001, -391-001, -442-\*\*\*, -451-001,002, -462-\*\*\*,  
 -522-001.

## Detailed Section Descriptions

### -Fusing Unit-

Component Part	Panda-C2	Kir-C3a	Notes
Fusing Lamp	1pc	2pcs	
Thermostat	2pcs	4pcs	(The 2 center thermostats remain)
Fusing Cleaning Roller	No	Yes	
Drive Release Solenoid	No	Yes	

SP modes and SCs for fusing: See above.

**Point-to-Point Diagram:** Posted to the RISSN server on Nov.29, 2006.

(See: \New Pro\ServiceM\Model\_PD-C2\P to P)

**Parts Catalog:** Posted to the RISSN server on Dec. 1, 2006.

Model: Panda-C2 (Kir-C3)	Date: 12-Jun-07	No.: RB245019b
--------------------------	-----------------	----------------

Subject: Firmware Release Note: Engine (Panda-C2)		Prepared by: H. Saitoh	
From: 1st Tech. Support Sec. Service Support Dept.			
Classification:	<input type="checkbox"/> Troubleshooting <input type="checkbox"/> Mechanical <input type="checkbox"/> Paper path <input checked="" type="checkbox"/> Other (      )	<input type="checkbox"/> Part information <input type="checkbox"/> Electrical <input type="checkbox"/> Transmit/receive	<input type="checkbox"/> Action required <input type="checkbox"/> Service manual revision <input type="checkbox"/> Retrofit information

This RTB has been issued to announce the firmware release information for the Engine.

Version	Program No.	Effective Date
<b>0.09</b>	<b>B2455534C</b>	<b>Jun. 07' production</b>
0.08	B2455534B	Apr. 07' production
0.07	B2455534A	1st Mass Production.

Version	Modified Points or Symptom Corrected
<b>0.09</b>	<b>Symptom corrected:</b> <b>SC542 occurs if the right door is opened/closed while the machine is warming up.</b>
0.08	Symptom corrected: SC542 may occur if developer initialization is performed immediately after the main switch is turned on.
0.07	1st Mass Production.

Reissued: 16-Mar-07

Model: Model K-C3	Date: 8-Feb-07	No.: RB245020a
-------------------	----------------	----------------

## RTB Reissue

- The item in ***bold italics*** was corrected.
- Steps 5-8 were deleted.

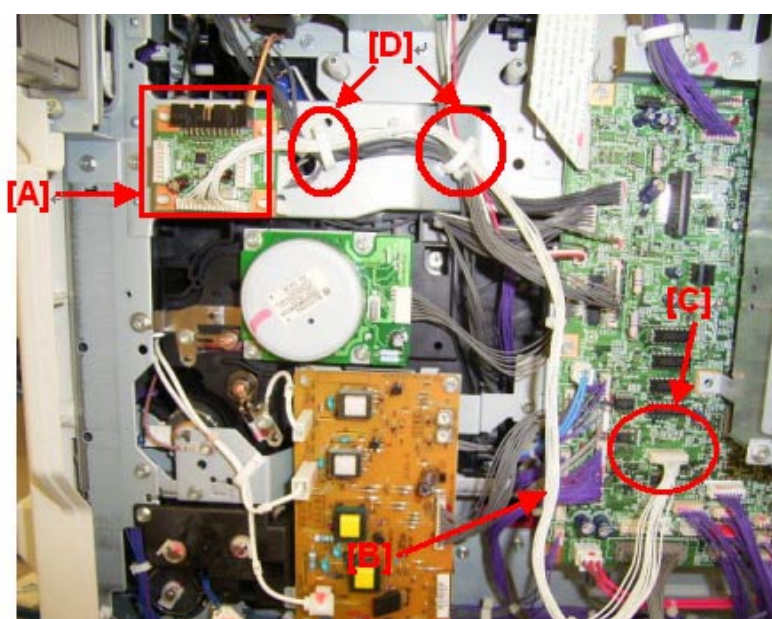
Subject: Service Manual Correction		Prepared by: Y. Yoshida	
From: 1st Tech. Support Sec. Service Support Dept.			
Classification:	<input type="checkbox"/> Troubleshooting <input type="checkbox"/> Mechanical <input type="checkbox"/> Paper path <input type="checkbox"/> Product Safety	<input type="checkbox"/> Part information <input type="checkbox"/> Electrical <input type="checkbox"/> Transmit/receive <input type="checkbox"/> Other (     )	<input type="checkbox"/> Action required <input checked="" type="checkbox"/> Service manual revision <input type="checkbox"/> Retrofit information

The Service Manual was changed as follows.

Add the following procedure:

### Installation Procedure for the Key Counter (Card) Interface Type A (20 pins)

1. Remove the rear cover.
2. Attach the bridge board [A] (***PCB STUDX4***).
3. Connect the connector [B] to CN140 [C] (13 pins) on the BICU.
4. Clamp the harness in two places [D].
- ~~5. Fix the grounding line in place with the screw [E].~~
- ~~6. Clamp the relay harness [F] in place with the clamp [G], which is included in the key counter bracket accessories (not in this interface unit).~~
- ~~7. Remove the cutout [H].~~
- ~~8. Pass the relay harness through the opening [H], and then reattach the rear cover.~~
5. ***Connect the harness for the external key counter device to CN4 (20 pins) on the bridge board [A].***
6. Reattach the rear cover.

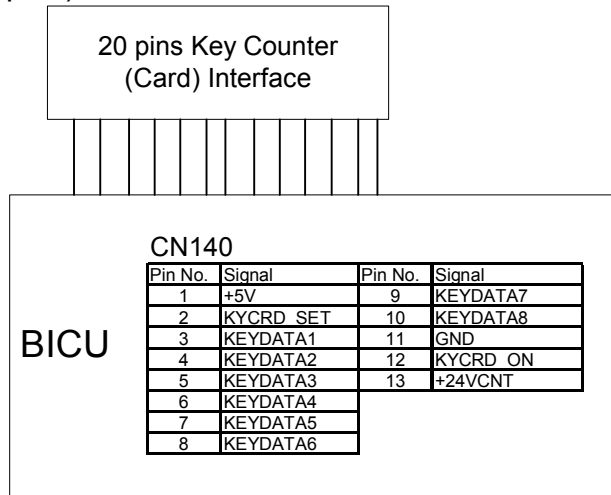


**Reissued: 16-Mar-07**

Model: Model K-C3	Date: 8-Feb-07	No.: RB245020a
-------------------	----------------	----------------

## Point to Point diagram

The following diagram was added for the optional Key Counter (Card) Interface Type A (20 pins).



Model: Model K-C3		Date: 19-Feb-07	No.: RB245021
Subject: Service Manual Correction		Prepared by: Y.Murata	
From: 1st Tech. Support Sec. Service Support Dept.			
Classification:	<input type="checkbox"/> Troubleshooting <input type="checkbox"/> Mechanical <input type="checkbox"/> Paper path <input type="checkbox"/> Product Safety	<input type="checkbox"/> Part information <input type="checkbox"/> Electrical <input type="checkbox"/> Transmit/receive <input type="checkbox"/> Other (     )	<input type="checkbox"/> Action required <input checked="" type="checkbox"/> Service manual revision <input type="checkbox"/> Retrofit information

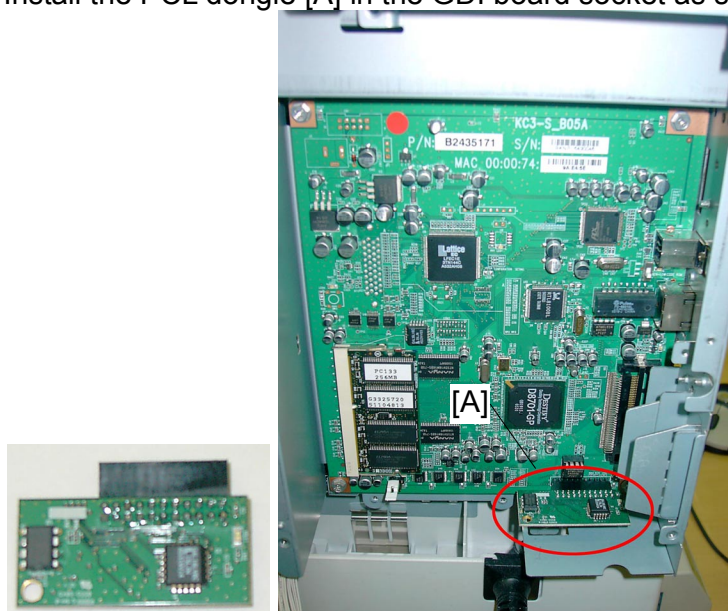
The Service Manual was changed as follows.

**Add** the following procedure:

## INSTALLATION OF PCL-Option

### Installation Procedure

1. Turn off the main power switch of the machine.
2. Remove the rear cover of the machine.
3. Remove the GDI box cover.
4. Install the PCL dongle [A] in the GDI board socket as shown below.



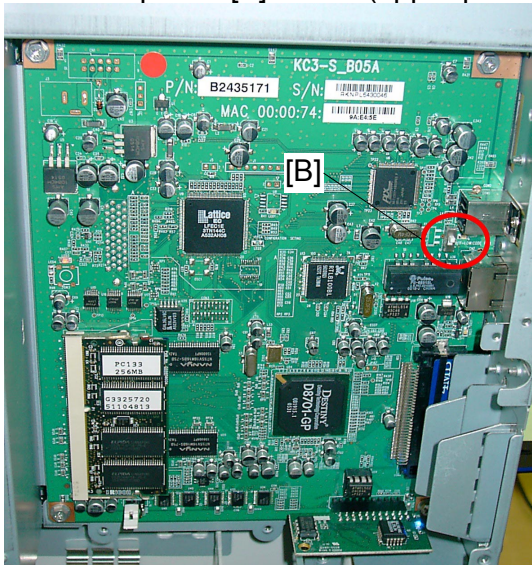


Model: Model K-C3

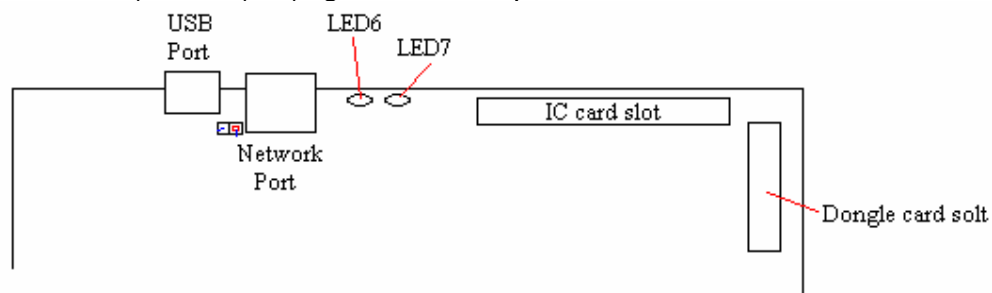
Date: 19-Feb-07

No.: RB245021

5. Turn on DipSW2 [B] switch (upper position).



6. Remove the cover of the IC card slot on the GDI controller board.
7. Install the PCL IC card in the IC card slot.  
**NOTE1:** 1) Download the firmware to your IC card from your firmware download site  
2) Part number of the firmware is B8955500.
8. Turn on the main power switch.  
**NOTE2:** 1) LED7 (orange) blinks during this installation.  
2) LED6 (red) lights after completion of this installation.



9. Turn off the main power switch after completing the installation.
10. Turn off the Dip SW2 (lower position).
11. Remove the IC card.
12. Turn on the main power switch.
13. Output the "Config. Page" (UserTool > Printer Features > List/Test Print > Config. Page) and confirm if PCL option is correctly installed.

**Reissued: 29-Sep-08**

Model: Kir-C3 (Stella-C3) PCL Option for GDI models	Date: 20-Feb-07	No.: RB245022c
---	-----------------	----------------

**RTB Reissue**

The items in bold italics have been added.

Subject: Firmware Release Note: GDI CTL for PCL		Prepared by: Y.Yoshida	
From: 1st Tech. Support Sec. Service Support Dept.			
Classification:	<input type="checkbox"/> Troubleshooting	<input type="checkbox"/> Part information	<input type="checkbox"/> Action required
	<input type="checkbox"/> Mechanical	<input type="checkbox"/> Electrical	<input type="checkbox"/> Service manual revision
	<input type="checkbox"/> Paper path	<input type="checkbox"/> Transmit/receive	<input type="checkbox"/> Retrofit information
	<input checked="" type="checkbox"/> Other (       )		

This RTB has been issued to announce the firmware release information for the GDI Controller with NIC models for the Kir-C3 and Stella-C3 when PCL option is installed.

**IMPORTANT:**

1. This RTB is the release note for version 5.52.
2. With this RTB, the format of the firmware version name was corrected (incorrect: "0.xx", correct: "5.xx").

Version	Program No.	Effective Date
<b>5.52</b>	<b><i>B8955500C</i></b>	<b><i>October 2008 production</i></b>
5.51	B8955500B	April 2008 production
5.46	B8955500A	December 2007 production
5.45	B8955500	1st Mass Production.

Version	Modified Points or Symptom Corrected
<b>5.52</b>	<b><i>Symptom corrected:</i></b> <b><i>1. When the display language is set to Russian, the LCD contents are displayed in Turkish.</i></b> <b><i>2. When the display language is set to Norwegian, the LCD contents are displayed in Catalanian.</i></b>
5.51	Symptom corrected: 1. To receive WHQL certification for Windows Vista, a unique USB serial number has been assigned to each device.  Following symptoms have been corrected: 1. No response to SNMP 'get-request' from the MFP. 2. SC692 occurs when printing specific MS Powerpoint files with PCL6 driver.
5.46	Symptom corrected: 1. Kir-C3-GDI: Printing speed is slower when printing a PDF file with Print as Image (ON) using a PCL6 driver. 2. Display error: [User Tools]->[PCL Menu]->[Font Number].
5.45	1st Mass Production.

Model: Model K-C3/GW-C1		Date: 15-May-07	No.: RB245023
Subject: Countermeasure for duplex printing error		Prepared by: Y.Murata	
From: 1st Tech. Support Sec. Service Support Dept.			
Classification:	<input type="checkbox"/> Troubleshooting <input type="checkbox"/> Mechanical <input type="checkbox"/> Paper path <input type="checkbox"/> Product Safety	<input type="checkbox"/> Part information <input type="checkbox"/> Electrical <input type="checkbox"/> Transmit/receive <input checked="" type="checkbox"/> Other (     )	<input type="checkbox"/> Action required <input type="checkbox"/> Service manual revision <input type="checkbox"/> Retrofit information

## SYMPTOM

If a duplex job has an odd number of pages, the counter increments by one extra page. For example, if the duplex job has 3 pages of data, the machine will count this as 4 pages.

**Note:** This does not occur when using a PCL driver for DDST.

## CAUSE

The counting specifications for duplex jobs with an odd number of pages were not included in the firmware.

## SOLUTION

On the affected machines listed below, update the DDST controller firmware **and** printer driver to the following versions:

DDST controller firmware: **Ver 1.88 or later**

DDST printer driver: **Ver 0.78 or later (K-C3L) / Ver 0.77 or later (GW-C1D)**

### Procedure:

1. Check the DDST controller firmware version (Sp7801). If the version is 1.86, update to **Ver 1.88 or later**.

**Note:** This firmware is installed on the controller boards listed in the table on the next page. It is also installed on machines listed in "Cut-in Serial Numbers".

2. Check the DDST printer driver version. If the version is Ver 0.75a or before, request the customer to update to **Ver 0.78 or later (K-C3L)** or **Ver 0.77 or later (GW-C1D)**.

**Note:** These drivers are included in CD-ROM **Ver 0.3 or later (K-C3L)** and **Ver 0.2 or later (GW-C1D and K-C3L for Taiwan)**.

**Important:** To fix this symptom, you need to update **both the DDST controller firmware and DDST printer driver**. If you do not, the machine can print but the symptom will still occur.

Model: Model K-C3/GW-C1

Date: 15-May-07

No.: RB245023

### Modified Controller Boards

The new controller firmware is installed on controller boards from the following P/N:

**Note:** The suffix is printed on the board, as shown in the photo.

New Part Number	Description	Q'ty	Int	Page	Index	Note
B8665171E or later	PCB:KC3-S:GDI-NOB:ASS'Y	1	X/O	3	2	
B8665171D or later	PCB:KC3-S:GDI-BASIC:ASS'Y	1	X/O	3	2	



### CUT-IN SERIAL NUMBERS

The new controller firmware is installed on the controller from the first machine of April 2007 production.

Model Code	Cut-in Serial Number
B269-19	L7176400001
B269-29	L7176400001
B269-39	L7176400001
B282-21	L8776400001
B282-64	3162740001
B865-15	L7276400001
B865-17	L7276400001
B865-21	L7276400001
B865-26	L7276400001
B865-27	L7276400001
B865-90	L7276400001
B866-10	L7376400001
B866-14	L7376400001
B866-15	L7376400001
B866-17	L7376400001
B866-21	L7376400001
B866-22	L7376400001
B866-26	L7376400001
B866-27	L7376400001
B866-90	L7376400001

Model: Model K-C3		Date: 11-Dec-07	No.: RB245024
Subject: Supports the Catalan and Turkish languages		Prepared by: Y. Yoshida	
From: 1st Tech. Support Sec. Service Support Dept.			
Classification:	<input type="checkbox"/> Troubleshooting <input type="checkbox"/> Mechanical <input type="checkbox"/> Paper path <input type="checkbox"/> Product Safety	<input type="checkbox"/> Part information <input type="checkbox"/> Electrical <input type="checkbox"/> Transmit/receive <input checked="" type="checkbox"/> Other (firmware)	<input type="checkbox"/> Action required <input type="checkbox"/> Service manual revision <input type="checkbox"/> Retrofit information

This machine now supports Catalan and Turkish.

Please update the following firmware to add Catalan and Turkish language support.

- Firmware list
  - System ver.1.04 or later
  - Fax ver.02.00.00 or later
  - FCU ver.02.00.00 or later
  - Printer ver.1.03 or later
  - Websys ver.1.05 or later
  - Scanner ver.01.02 or later
- Firmware release notes
 

All firmware release notes use the same expression as shown below.

  - Supports the Catalan and Turkish languages.
- Supported functions
 

Supported device functions are different depending on language.

Please confirm them in the following table.

## [Device]

Device functions		Catalan	Turkish
Copy	Operation panel	OK	OK
Fax	Operation panel	OK	OK
	Lists printed from FAX operation panel (i.e. Print Journal List)	NO**	NO*
	Internet Fax: Email message (Transmission)	NO**	NO*
	Internet Fax: Email message (Reception)	OK	NO*
	Internet Fax: Email subject	NO**	NO*
	Standard Message Stamp	OK	OK

Model: Model K-C3

Date: 11-Dec-07

No.: RB245024

Device functions		Catalan	Turkish
Printer	Operation panel	OK	OK
	Printer lists in Printer Features (i.e. Configuration Page)	OK	NO*
Scanner	Operation panel	OK	OK
	Lists printed from Scanner operation panel (i.e. transmission result)	OK	OK
	E-mail Information Language in Scanner Features	OK	OK
User Tools	Print Address Book (Header)	OK	OK
	Headers or file names of other lists (i.e. Print Counter)	NO*	NO*
Web Image Monitor	Display language	OK	OK
	Help	NO**	NO*
Other	E-mail Notification	OK	OK
	Software Keyboard	OK	NO***

\* It will be printed/used/displayed in English instead.

\*\* It will be printed/used/displayed in Spanish instead.

\*\*\* Turkish is not available.

## [Software]

Software	Catalan	Turkish
SmartDeviceMonitor for Admin	NO	NO
SmartDeviceMonitor for Client	NO	NO
DeskTopBinder	NO	NO

## [Drivers]

Drivers		Catalan	Turkish
Printer driver	RPCS driver	NO	OK
	PCL driver	OK	NO
	PS driver	NO	NO
Twain driver		NO	NO
LAN-Fax driver		NO	NO

Model: Model K-C3

Date: 11-Dec-07

No.: RB245024

**[Manuals]**

<b>Manuals</b>	<b>Catalan</b>	<b>Turkish</b>
Manual	OK	OK

Model: General		Date: 12-Mar-08	No.: RGene027
Subject: New Wireless LAN Option		Prepared by: H.K.	
From: 1st Tech. Support Sec. Service Support Dept.			
Classification:	<input type="checkbox"/> Troubleshooting <input type="checkbox"/> Mechanical <input type="checkbox"/> Paper path <input type="checkbox"/> Product Safety	<input type="checkbox"/> Part information <input type="checkbox"/> Electrical <input type="checkbox"/> Transmit/receive <input type="checkbox"/> Other (     )	<input checked="" type="checkbox"/> Action required <input checked="" type="checkbox"/> Service manual revision <input type="checkbox"/> Retrofit information

## Important Information on the Release of a New Wireless LAN Option

### Overview

1. Production of a new wireless LAN option, the **IEEE 802.11b Interface Unit Type N**, began in March 2008. This will replace the current wireless LAN options listed below, as the vendor discontinued production on a key part contained in these options.
2. Make sure to see below for the target models and action in the field, including the necessary firmware versions.

### Details

1. Discontinued wireless LAN options:

for US

Code	EDP	Description	Note
B736-06	412176	IEEE 802.11b Interface Unit Type E	discontinued in 1st 2007
G813-01	402345	802.11b Interface Unit Type F	discontinued in 1st 2007 due to country origin issue
<b>G813-08</b>	<b>403019</b>	<b>802.11b Interface Unit Type F</b>	change from EDP:402345
G813-04	402378	IEEE802.11b Interface Unit Type H	discontinued in 1st 2007 due to country origin issue
<b>G813-07</b>	<b>403018</b>	<b>IEEE802.11b Interface Unit Type H</b>	change from EDP:402378
G874-39	402631	IEEE802.11b Interface Unit Type I	discontinued in 1st 2007 due to country origin issue
<b>G874-48</b>	<b>403017</b>	<b>IEEE802.11b Interface Unit Type I</b>	change from EDP:402631

for EU and Asia

Code	EDP	Description	Note
B736-07	412177	IEEE 802.11b Interface Unit Type E	discontinued in 1st 2007
G813-02	402358	802.11b Interface Unit Type F	discontinued in 1st 2007 due to country origin issue
<b>G813-10</b>	<b>403020</b>	<b>802.11b Interface Unit Type F</b>	change from EDP:402358
G813-05	402379	IEEE802.11b Interface Unit Type H	discontinued in 1st 2006 due to RoHS
G813-45	412996	IEEE802.11b Interface Unit Type H	discontinued in 1st 2007 due to country origin issue
<b>G813-09</b>	<b>414421</b>	<b>IEEE802.11b Interface Unit Type H</b>	change from EDP:412996

2. Specifications of the new wireless LAN option:



Print\_B7367059.pc

#### Specification Sheet:

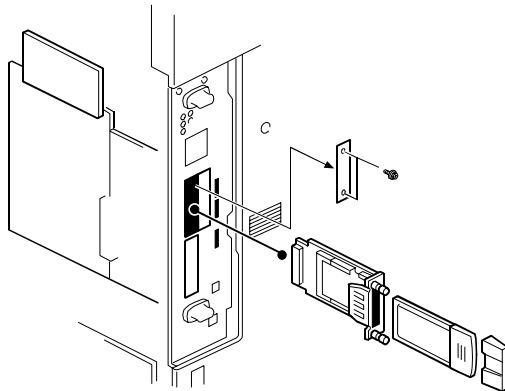
Model Name: IEEE 802.11b Interface Unit Type N  
 Machine code: B736-16  
 EDP code: 414525  
 Package: All-in-one (PCB, LAN card, and cover are pre-assembled)  
 Channel freq. range: 2412 MHz to 2462 MHz (11ch.)  
 Transmission speed: 1Mbps, 2Mbps, 5.5 Mbps, 11Mbps



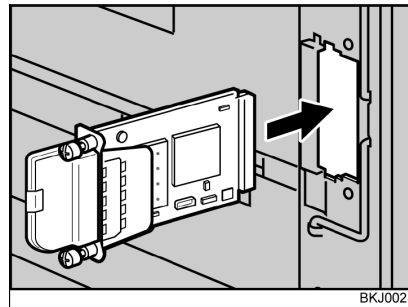
Model: General

Date: 12-Mar-08

No.: RGene027



Previous types:  
PCB, LAN card, and cover are  
separate



New Type (IEEE802.11b  
Interface Unit Type N):  
Pre-assembled

## Action in the Field

### 1. MFP Models

Update the firmware on the target MFP models to the necessary versions at the installation.

**See “Target Models” below.**

### 2. LP Models

Update the firmware on the target LP models to the necessary versions if the customer requests it. The following notice to customers (from the Operating Instructions) lists the firmware versions necessary to use the new wireless LAN option. If a firmware update is necessary, the customer contacts their sales or service representative.

**See “Target Models” below.**

Notice to users (excerpt on next page):



print\_B7367058.pdf

Model: General

Date: 12-Mar-08

No.: RGene027

## Excerpt from the Operating Instructions for LP models

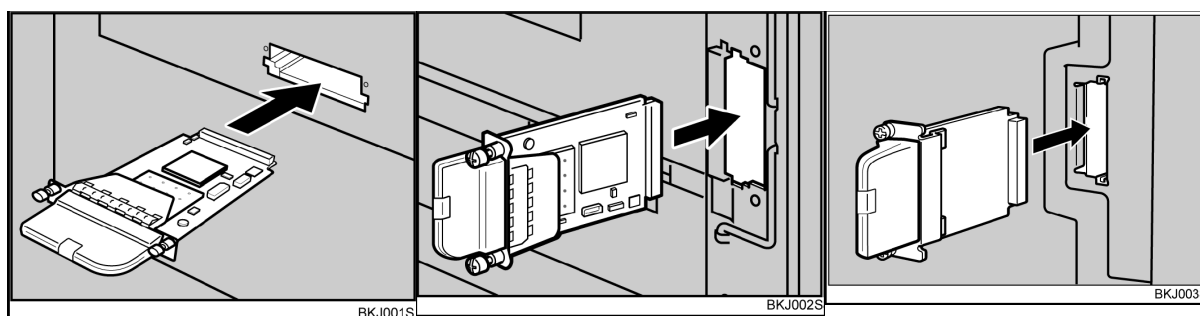
### Installing the Optional Wireless LAN Interface Unit

#### **Important:**

- Before handling the wireless LAN interface unit, ground yourself by touching something metal to discharge any static electricity. Static electricity can damage the wireless LAN interface unit.
  - Do not subject the wireless LAN interface unit to physical shocks.
1. Turn off the power of the printer, and then unplug the power cable and the interface cable.
  2. Remove the two screws from the interface unit's slot cover, and then remove the slot cover.  
The removed cover is not used when installing the wireless LAN interface unit. Keep it for possible future use.

For details about the location of the interface unit slot, see the manual provided with your printer.

3. Attach the wireless LAN interface unit.



Insert the end of the wireless LAN interface unit into the slot.

Slot types vary according to device. For details, see the manual provided with your printer.

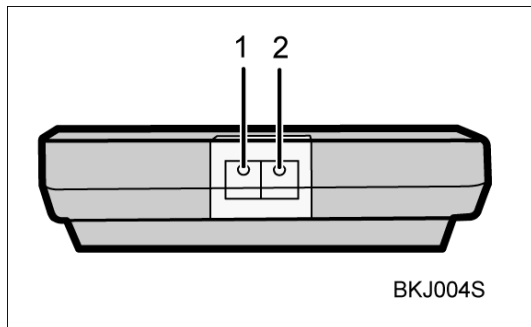
4. Fasten the wireless LAN interface unit to the controller board with the two screws.  
Check the wireless LAN interface unit is connected firmly to be controller board.

#### **Note**

- Use a coin or similar object if the screws do not turn easily.
- After finishing installation, you can check the wireless LAN interface unit is properly installed: Print the configuration page from the [List / Test Print] menu. If it is installed properly, the name of wireless LAN interface unit will appear for "Device Connection" on the configuration page.
- If the wireless LAN interface unit is not installed properly, reinstall it following this procedure. If you cannot install it properly even after attempting reinstallation, contact your sales or service representative.
- You need to make settings with the control panel before using the wireless LAN interface unit. For more information, see the manual provided with your printer.

Checking the Connection

To check the connection, use the two lights on the optional wireless LAN interface unit.



1. The orange light indicates normal network connectivity.
2. The green light indicates that the optional wireless LAN interface unit is properly powered.

If both lights are lit, the wireless connection is fully operational.

Model: General

Date: 12-Mar-08

No.: RGene027

## Target Models

### MFP

	Model	System firmware	NCS firmware	Websys firmware	Applied to the production line
01.	Athena-C1/C1k	1.68	5.17	1.12	2008 February
02.	Apollon-C1	1.67	5.17	1.09	2008 February
03.	Pegasus-C1	(1.31)	(5.17)	(1.08)	2008 March
04.	Kir-C3(GW)	1.08	6.14	1.07	2008 March
05.	Stella-C3(GW)	1.05	6.14	1.06	2008 March
06.	Parisian-C1(GW)	1.02	6.14	1.03	2008 March
07.	Neptune-C2	(2.00)	(6.10)	(1.08)	2008 May
08.	Martini-C3.5	3.01	5.56	2.03	2008 April

### Note:

- The old wireless LAN options can be used with both the old and new firmware.
- The following models only support the old wireless LAN options:  
Bellini-C3, Themis-C1, Adonis-C4.5, Russian-C4.5, Jupiter-C2, Martini-C2.5, Martini-C3

### LP

	Model	System firmware	NCS firmware	Websys firmware	Applied to the production line
01.	Gaia-P2	(1.12)	T.B.D	T.B.D	2008 April
02.	Gaia-P2L	(1.01)	T.B.D	T.B.D	2008 April
03.	Apollon-P1d	1.07	6.05.7	1.03	2008 March
04.	Adonis-P4	(1.08)	T.B.D	T.B.D	2008 April
05.	Martini-P2	(1.10)	T.B.D	T.B.D	2008 April
06.	Sincere-P1	1.08*	6.10	1.03	2008 February
07.	Neptune-P1	T.B.D	T.B.D	T.B.D	2008 May

### Note:

- The old wireless LAN options can be used with both the old and new firmware.
- The following models only support the old wireless LAN options:  
Kir-P4, Ares-P2, Jupiter-P4
- \*: The notice to customers for Sincere -P1 mentions “version 1.07” for the System firmware, but 1.07 was not used for the production. The correct version is 1.08.

Model: Panda-C3(Kir-C3)	Date: 3-Dec-08	No.: RB245025
-------------------------	----------------	---------------

Subject: Firmware Release Note: BICU_IC(Panda-C3)		Prepared by: Y. Yoshida	
From: 1st Tech. Support Sec. Service Support Dept.			
Classification:	<input type="checkbox"/> Troubleshooting	<input type="checkbox"/> Part information	<input type="checkbox"/> Action required
	<input type="checkbox"/> Mechanical	<input type="checkbox"/> Electrical	<input type="checkbox"/> Service manual revision
	<input type="checkbox"/> Paper path	<input type="checkbox"/> Transmit/receive	<input type="checkbox"/> Retrofit information
	<input checked="" type="checkbox"/> Other (       )		

This RTB has been issued to announce the firmware release information for the BICU\_IC.

Version	Program No.	Effective Date
<b>0.01</b>	<b>B2455536</b>	<b>1st Mass Production.</b>

Version	Modified Points or Symptom Corrected
<b>0.01</b>	<b>1st Mass Production.</b>

Model: Kir-C3		Date: 19-Jan-09	No.: RB245026
Subject: Jam at machine installation		Prepared by: Y. Yoshida	
From: 1st Tech. Support Sec. Service Support Dept.			
Classification:	<input checked="" type="checkbox"/> Troubleshooting <input type="checkbox"/> Mechanical <input type="checkbox"/> Paper path <input type="checkbox"/> Product Safety	<input type="checkbox"/> Part information <input type="checkbox"/> Electrical <input type="checkbox"/> Transmit/receive <input type="checkbox"/> Other (     )	<input type="checkbox"/> Action required <input type="checkbox"/> Service manual revision <input type="checkbox"/> Retrofit information <input checked="" type="checkbox"/> Tier 2

## Symptom

On some machines (see the list below), a jam occurs at machine installation.

## Cause

Adhesive inside the stepping motor (P/N B2614710) did not vaporize properly, causing the gear to stick to the shaft. As a result, the motor locks.

### S/N of affected machines:

B277-67: L6886560032- L6886961916

B277-66: 9Y78780001- 9Y78880166

B269-39: L7186451579 - L7186950970

B277-21: L7086500159 - L7086900539

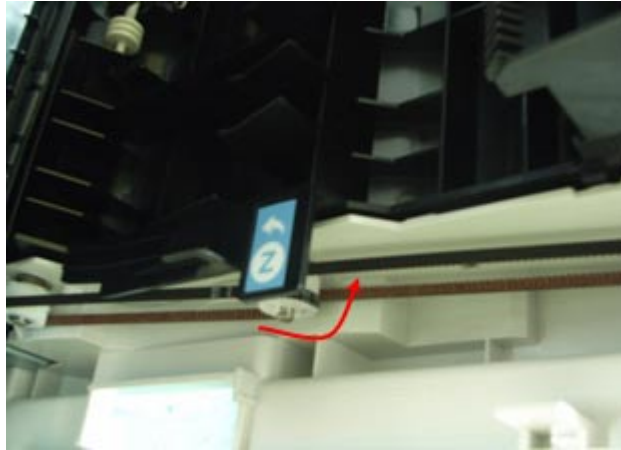
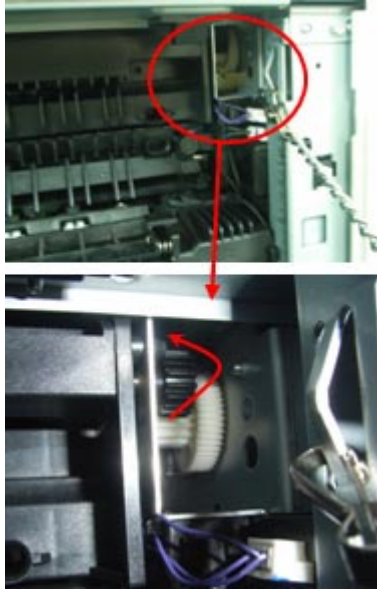
B277-17: L7086540498 - L7086941249

## Action

1. Open the right door.



2. Rotate the gears until they break free of the adhesive.



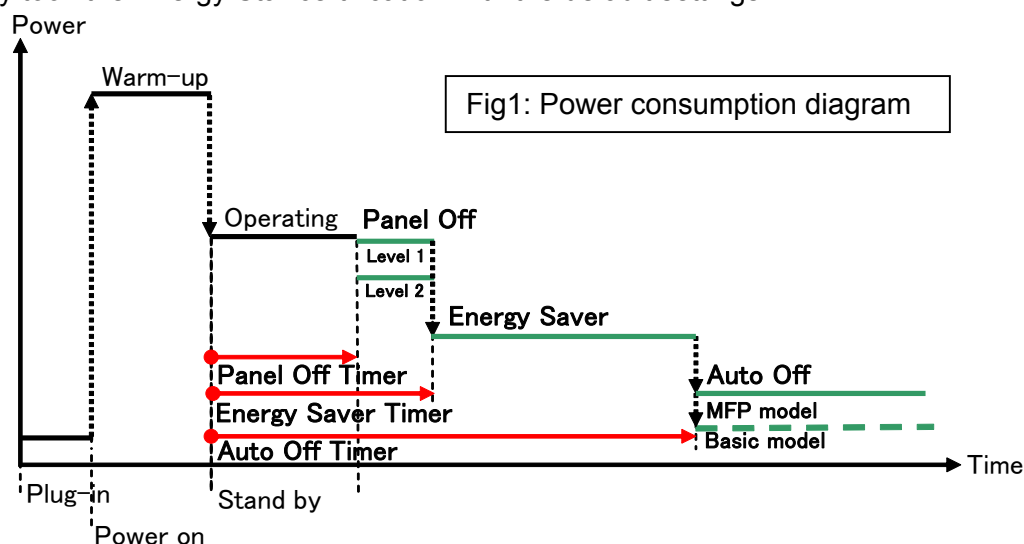
Model: S-C4, K-C3, PR-C1, R-C5, AI-C1, Di-C1, AT-C2, AP-C2		Date: 18-Nov-09	No.: RGene036
Subject: Recommended Eco Mode setting (for Europe/Middle East/Africa only)		Prepared by: F.Noguchi	
From: 2nd Overseas Tech Support Sec., 2nd PQM Dept.			
Classification:	<input type="checkbox"/> Troubleshooting <input type="checkbox"/> Part information <input type="checkbox"/> Action required <input type="checkbox"/> Mechanical <input type="checkbox"/> Electrical <input type="checkbox"/> Service manual revision <input type="checkbox"/> Paper path <input type="checkbox"/> Transmit/receive <input type="checkbox"/> Retrofit information <input type="checkbox"/> Product Safety <input checked="" type="checkbox"/> Other (      ) <input type="checkbox"/> Tier 2		

## 1. Recommended Ricoh Eco Mode settings

Ricoh products are designed to help our customers to reduce their power consumption. The following table shows Ricoh recommended setting values for Panel off timer, Energy saver timer and Auto off timer for energy saving.

	Model	Panel Off Timer		Energy Saver Timer		Auto Off Timer		Reduction ratio for power consumption
		Recommend Setting (10 sec ~ 240 min)	Recovery time	Recommend Setting (1 ~ 240 min)	Recovery time	Recommend setting (1 ~ 240 min)	Recovery time	
B&W	S-C4	-	-	1 min (Factory default)	10 sec	1 min (Factory default)	10sec (C4/C4SPF) 7 sec (C4F)	77%~86%
	K-C3	-	-		10 sec		10 sec	74%~85%
	PR-C1	-	-		10 sec		10 sec	83%
	R-C5	1 min	0 sec	-	-		10 sec	72%~81%
	AI-C1	(Factory default)	0 sec	-	-		10 sec	66%
B2C	Di-C1	<ul style="list-style-type: none"> <li>1 min</li> <li>Level2 (Factory default)</li> </ul>	5.9 sec	-	-	20min(Di-C1a/C1La) 30min(Di-C1c/C1Lc) (Factory default)	25 sec (C1a/C1La/C1Lc) 26 sec(C1c)	38%~42%
	AT-C2	<ul style="list-style-type: none"> <li>1 min (Factory default)</li> <li>Change from Level1 (default) to Level2 See Note</li> </ul>	7sec	15 min (Factory default)	17sec	30 min (Factory default)	24 sec	35%~37%
	AP-C2	<ul style="list-style-type: none"> <li>1 min</li> <li>Level1 (Factory default)</li> </ul>	5.4 sec	Change from 15 min (default) to 1 min See Note	5.5 sec	45 min (Factory default)	31 sec(C1c) 49 sec(C1d)	24%

**Note:** We cannot change the default settings to be the recommended settings, because we already took the Energy Star certification with the default settings.





Model:

S-C4, K-C3, PR-C1, R-C5, AI-C1, Di-C1, AT-C2, AP-C2

Date: 18-Nov-09

No.: RGene036

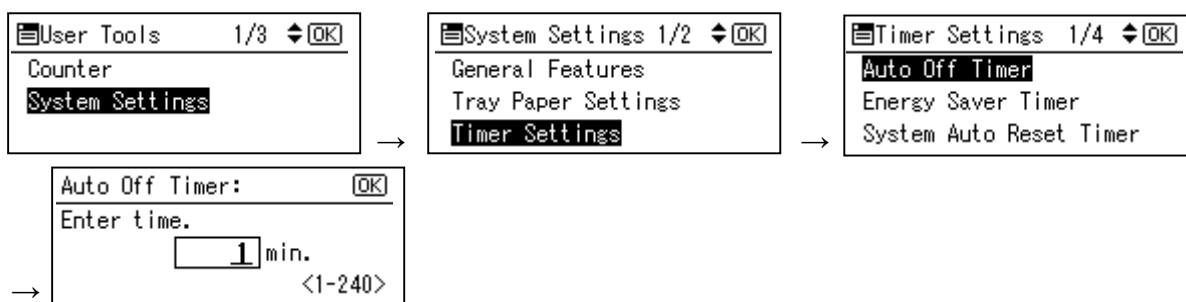
## 2. Eco Mode setting procedure

### 2.1 B/W models

Model S-C4, K-C3, PR-C1

#### ■ Timer Setting Procedure:

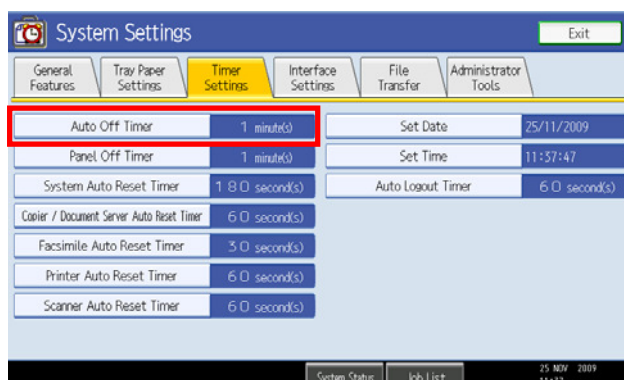
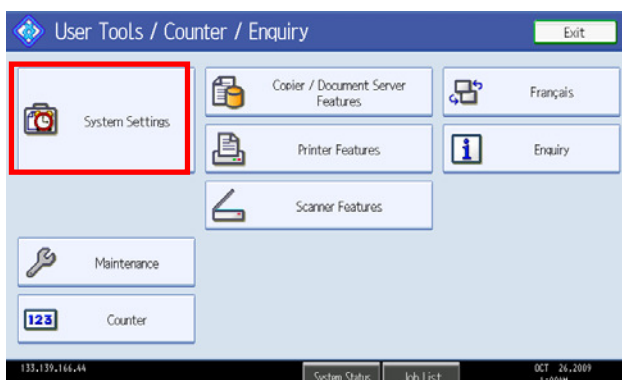
- 1) Check the current setting on Auto Off timer setting.
  - 2) If Auto Off Timer is not set to 1 minute, change the setting to 1 minute (as default setting).
- User Tools/Counter → System Settings → Timer Settings → Auto Off Timer 1 min. (Default)



Model R-C5

#### ■ Timer Setting Procedure:

- 1) Check the current setting on Auto Off timer setting.
  - 2) If Auto Off Timer is not set to 1 minute, change the setting to 1 minute (as default setting).
- User Tools/Counter → System Settings → Timer Settings → Auto Off Timer 1 min. (Default)



Model:  
S-C4, K-C3, PR-C1, R-C5, AI-C1, Di-C1, AT-C2, AP-C2

Date: 18-Nov-09

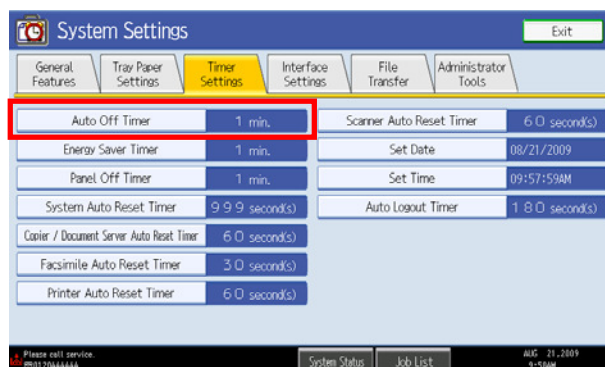
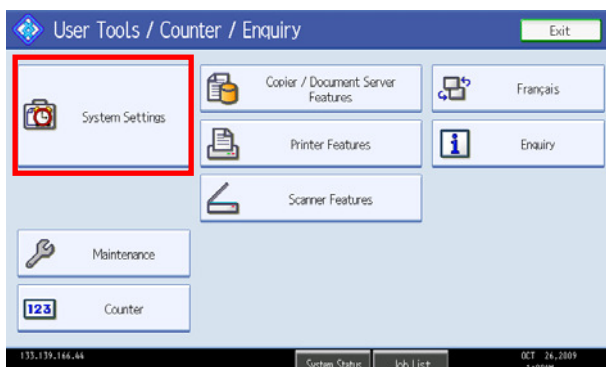
No.: RGene036

## Model AL-C1

### ■ Timer Setting Procedure:

- 1) Check the current setting on Auto Off timer setting.
- 2) If Auto Off Timer is not set to 1 minute, change the setting to 1 minute (as default setting).

User Tools/Counter → System Settings → Timer Settings → Auto Off Timer 1 min. (Default)



Model:  
S-C4, K-C3, PR-C1, R-C5, AI-C1, Di-C1, AT-C2, AP-C2

Date: 18-Nov-09

No.: RGene036

## 2.2 Color models

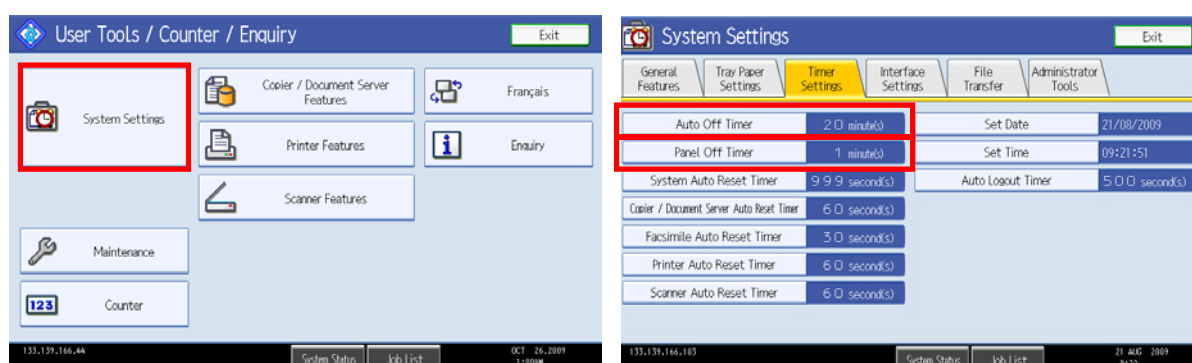
### Model Di-C1

#### ■ Timer Setting Procedure:

User Tools/Counter → System Settings → Timer Settings

- 1) Check the current setting on Panel Off and Auto Off timer setting.
- 2) If these settings are not at the default settings, return them to their default settings.  
(Refer to table on page 1/9)

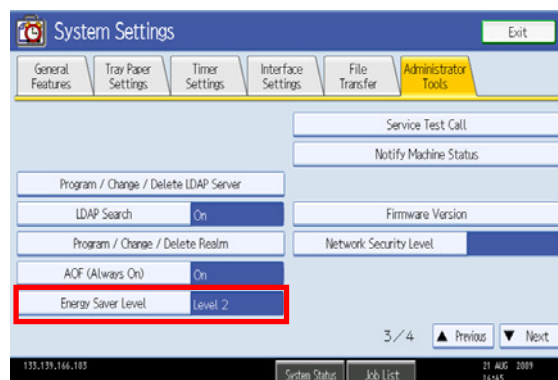
Note: If the user requests the Auto Off Timer setting be changed, please change to a value between 60 to 120 minutes.



#### ■ Panel Off timer (Energy Saver Level) on setting Procedure:

User Tools/Counter → System Settings  
→ Administrator Tools → Energy Saver Level

- 1) Check the current setting.
- 2) If it is not Level 2, change the setting to Level 2 (factory default setting).



Model:  
S-C4, K-C3, PR-C1, R-C5, AI-C1, Di-C1, AT-C2, AP-C2

Date: 18-Nov-09

No.: RGene036

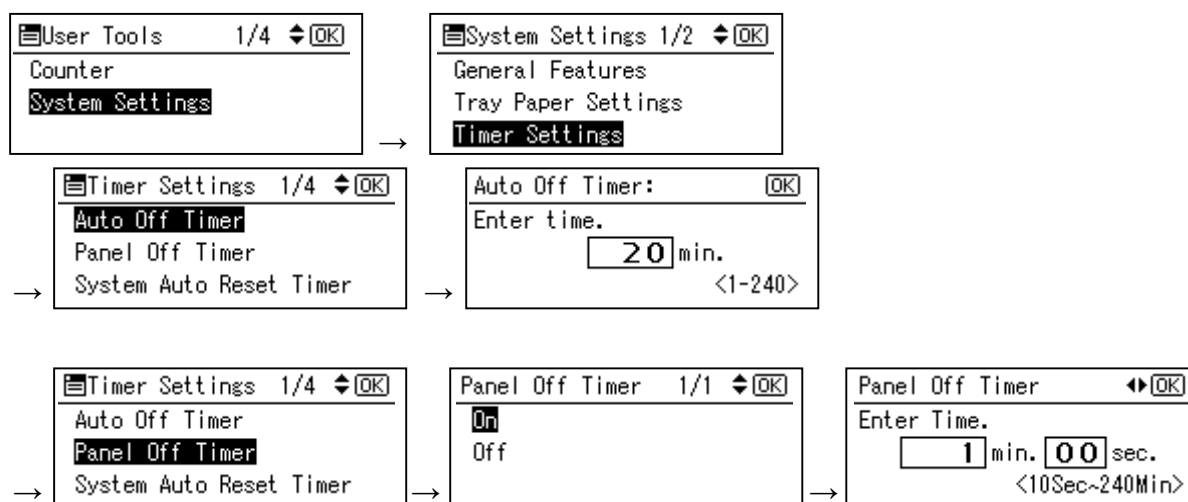
Model Di-C1L

■ **Timer Setting Procedure:**

User Tools/Counter → System Settings → Timer Settings

- 1) Check the current setting on Panel Off and Auto Off timer setting.
- 2) If these settings are not at the default settings, return them to their default settings.

Note: If the user requests the Auto Off Timer setting be changed, please change to a value between 60 to 120 minutes.



■ **Panel Off timer (Energy Saver Level) on setting Procedure:**

User Tools/Counter → System Settings → Administrator Tools → Energy Saver Level

- 1) Check the current setting.
- 2) If it is not Level 2, change the setting to Level 2.



Model:  
S-C4, K-C3, PR-C1, R-C5, AI-C1, Di-C1, AT-C2, AP-C2

Date: 18-Nov-09

No.: RGene036

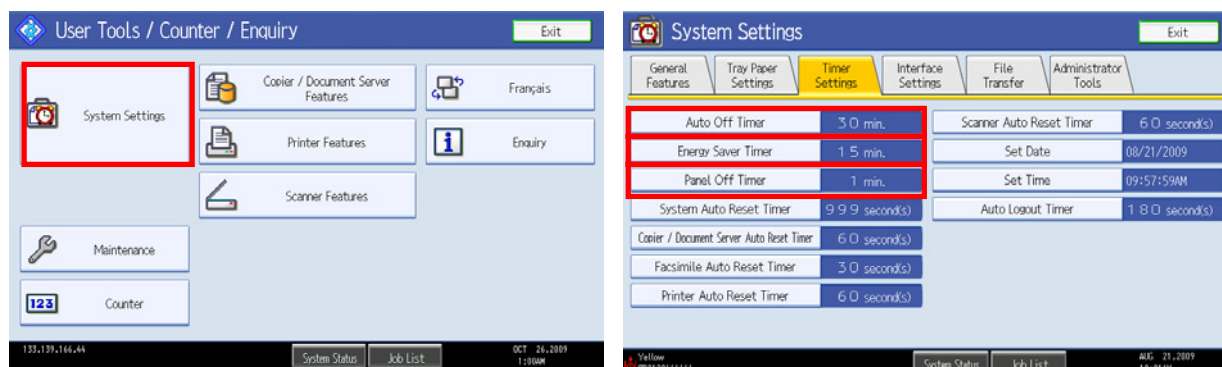
## Model AT-C2

### ■ Timer Setting Procedure:

User Tools/Counter → System Settings → Timer Settings

- 1) Check the current setting on Panel Off, Energy Saver and Auto Off timer setting.
- 2) If these settings are not at the recommended settings, return them to their recommended settings. (Refer to the table on page 1/9)

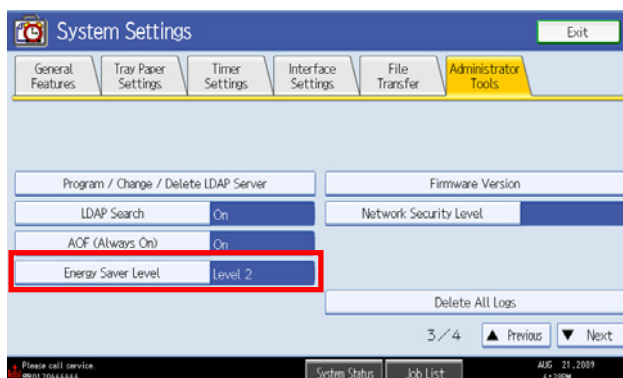
**Note:** If the user requests the Auto Off Timer setting be changed, please change to a value between 60 to 120 minutes.



### ■ Panel Off timer (Energy Saver Level) on setting Procedure:

User Tools/Counter → System Settings → Administrator Tools → Energy Saver Level

- 1) Check the current setting.
- 2) If it is not Level 2, change the setting to Level 2.



Model:  
S-C4, K-C3, PR-C1, R-C5, AI-C1, Di-C1, AT-C2, AP-C2

Date: 18-Nov-09

No.: RGene036

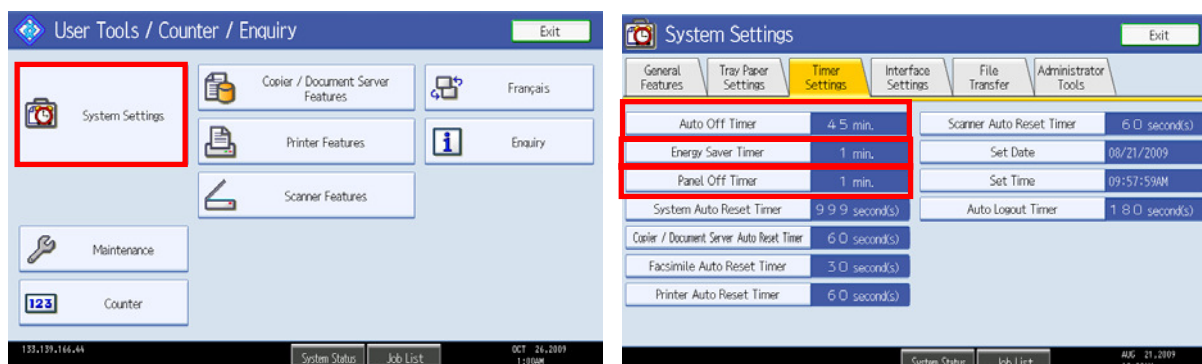
## Model AP-C2

### ■ Timer Setting Procedure:

User Tools/Counter → System Settings → Timer Settings

- 1) Check the current setting on Panel Off, Energy Saver and Auto Off timer setting.
- 2) If these settings are not the recommended settings, return them to their recommended settings. (Refer to the table on page 1/9)

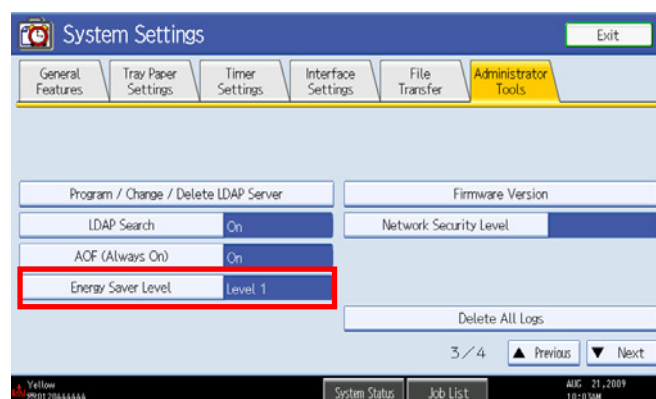
**Note:** If the user requests the Auto Off Timer setting be changed, please change to a value between 60 to 120 minutes.



### ■ Panel Off timer (Energy Saver Level) on setting Procedure:

User Tools/Counter → System Settings → Administrator Tools → Energy Saver Level

- 1) Check the current setting.
- 2) If it is not Level 1, change the setting to Level 1 (factory default setting).



Model:  
S-C4, K-C3, PR-C1, R-C5, AI-C1, Di-C1, AT-C2, AP-C2

Date: 18-Nov-09

No.: RGene036

### 3. Power consumption

Model Name	Panel Off Timer			Energy Saver Timer			Auto Off Timer			Reduction ratio for Power consumption (%) *See Note1
	Default Setting		Recommen dation	Default Setting		Recom mendat ion	Default Setting		Recom mendat ion	
	Time (m)	Power consu mption (W)	Time (W)	Time (m)	Power consu mption (W)	Time (W)	Time (m)	Power consu mption (W)	Time (W)	
S-C4				1	21.6	Keep Factory Default	1	0.6	Keep Factory Default	86
S-C4 F				1	30.2		1	4.8		77
S-C4 SPF				1	25.5		1	5.0		77
K-C3a				1	40		1	1.0		85
K-C3b				1	40		1	1.0		85
K-C3cd				1	40		1	0.7		74
PR-C1				1	34.3		1	0.7		83
R-C5b CS	1	161	Keep Factory Default				1	5.6	Keep Factory Default	77
R-C5c CS	1	161					1	5.6		72
R-C5b	1	154					1	1.1		81
R-C5c	1	154					1	1.1		76
AI-C1b	1	143					1	5.7		66

Model Name	Pannel Off Timer				Energy saver Timer			Auto Off Timer			Reduction ratio for Power consumption (%)  *See Note1	
	Default Setting			Recommendation		Default Setting		Recom mendation	Default Setting			Recommen dation
	Lavel	Time (min)	Power consu mption (W)	Level	Time (min)	Time (min)	Power consu mption (W)	Time (min)	Time (min)	Power consu mption (W)		Time (min)
Di-C1La	2	1	126	Keep Factory Default					20	4.7	Keep Factory Default	40
<b>Di-C1Lc</b>	<b>2</b>	<b>1</b>	<b>126</b>						<b>30</b>	<b>4.7</b>		<b>38</b>
Di-C1a	2	1	131						20	5.2		42
Di-C1c	2	1	131						30	5.2		41

Model: S-C4, K-C3, PR-C1, R-C5, AI-C1, Di-C1, AT-C2, AP-C2	Date: 18-Nov-09	No.: RGene036
---	-----------------	---------------

Model Name	Panel Off Timer						Energy Saver Timer			Auto Off Timer			Reduction ratio for Power consumption (%) *See Note1
	Default Setting			Recommendation			Default Setting		Recommendation	Default Setting		Recommendation	
	Level	Time (min)	Power consumption (W)	Level	Time (min)	Power consumption (W)	Time (min)	Power consumption (W)	Time (min)	Time (min)	Power consumption (W)	Time (min)	
AT-C2a	1	1	210	Change to Level2	Keep Factory Default	173	15	106	Keep Factory Default	30	4.3	Keep Factory Default	35
AT-C2b	1	1	216	Change to Level2		171	15	104		30	4.3		37

Model Name	Panel Off Timer						Energy Saver Timer			Auto Off Timer			Reduction ratio for Power consumption (%) *See Note1
	Default Setting			Recommendation			Default Setting		Recommendation	Default Setting		Recommendation	
	Level	Time (min)	Power consumption (W)	Level	Time (min)		Time (min)	Power consumption (W)	Time (min)	Time (min)	Power consumption (W)	Time (min)	
AP-C2c	1	1	141	Keep Factory Default	Keep Factory Default		15	135	Change to 1 min	45	2.9	Keep Factory Default	24
AP-C2d	1	1	141				15	135		45	2.9		24

**Note 1:** Percentage reduction in power consumption when using the recommended settings, compared with the maximum setting of 240 minutes.

The actual reduction in power consumption will vary depending on the customer's usage conditions (e.g. ACV, P/J, option configuration, etc.) and installation environment (e.g. temperature and humidity conditions).





Model: K-C3		Date: 14-Jan-10	No.: RB245028
Subject: Parts Catalog Correction		Prepared by: M.Saiki	
From: 2nd Overseas Tech Support Sec., 2nd PQM Dept.			
Classification:	<input type="checkbox"/> Troubleshooting <input type="checkbox"/> Mechanical <input type="checkbox"/> Paper path <input type="checkbox"/> Product Safety	<input checked="" type="checkbox"/> Part information <input type="checkbox"/> Electrical <input type="checkbox"/> Transmit/receive <input type="checkbox"/> Other (     )	<input type="checkbox"/> Action required <input type="checkbox"/> Service manual revision <input type="checkbox"/> Retrofit information <input type="checkbox"/> Tier 2

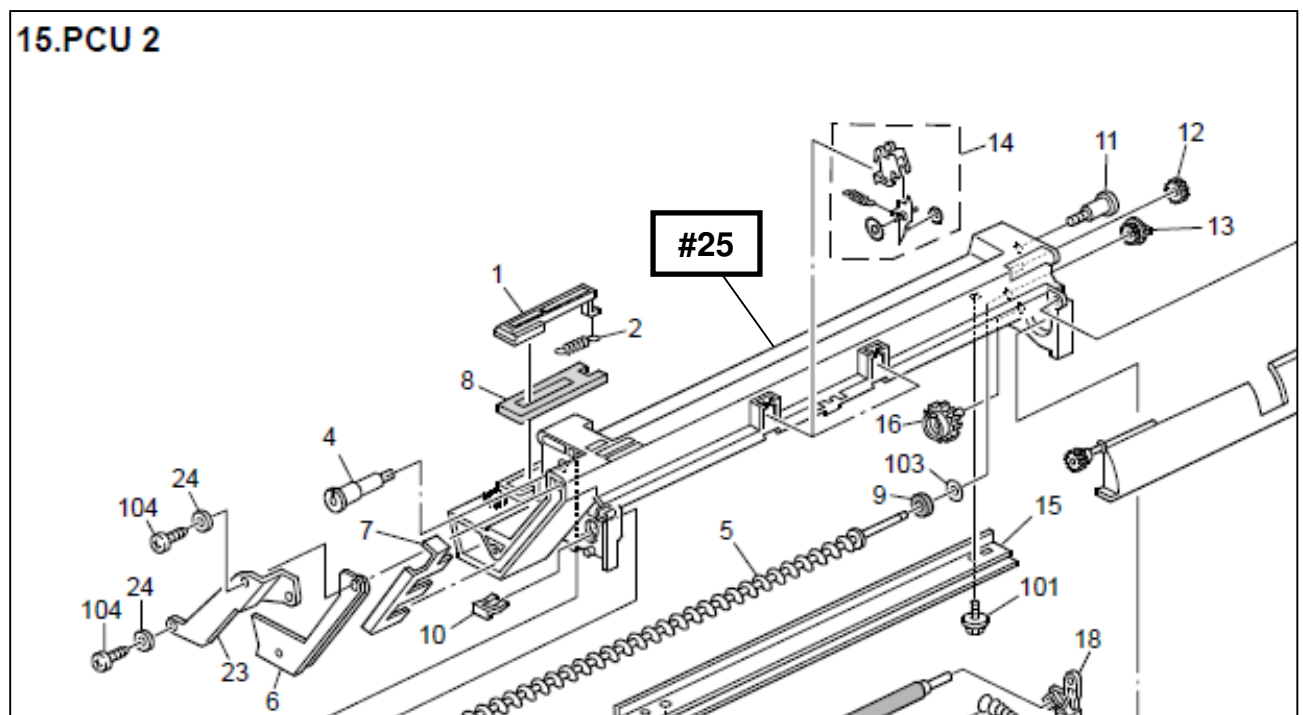
Incorrect part number	Correct part number	Description	Q'ty	Int	Page	Index	Note
	B1212252	UPPER PCU CASE	0 - 1		37	#25	

#: New index

**Change:** An index in the illustration was added.

**Reason:** Correction of illustration and part number.

See the following diagram for the corrected illustration.



Model: K-C3		Date: 18-Feb-10	No.: RB245029
Subject: Parts Catalog Correction		Prepared by: M.Saiki	
From: 2nd Overseas Tech Support Sec., 2nd PQM Dept.			
Classification:	<input type="checkbox"/> Troubleshooting <input type="checkbox"/> Mechanical <input type="checkbox"/> Paper path <input type="checkbox"/> Product Safety	<input checked="" type="checkbox"/> Part information <input type="checkbox"/> Electrical <input type="checkbox"/> Transmit/receive <input type="checkbox"/> Other (     )	<input type="checkbox"/> Action required <input type="checkbox"/> Service manual revision <input type="checkbox"/> Retrofit information <input type="checkbox"/> Tier 2

Incorrect part number	Correct part number	Description	Q'ty	Int	Page	Index	Note
	B2381845	SEAL:EXPOSURE GLASS	0 - 2		14	#19	

#: New index

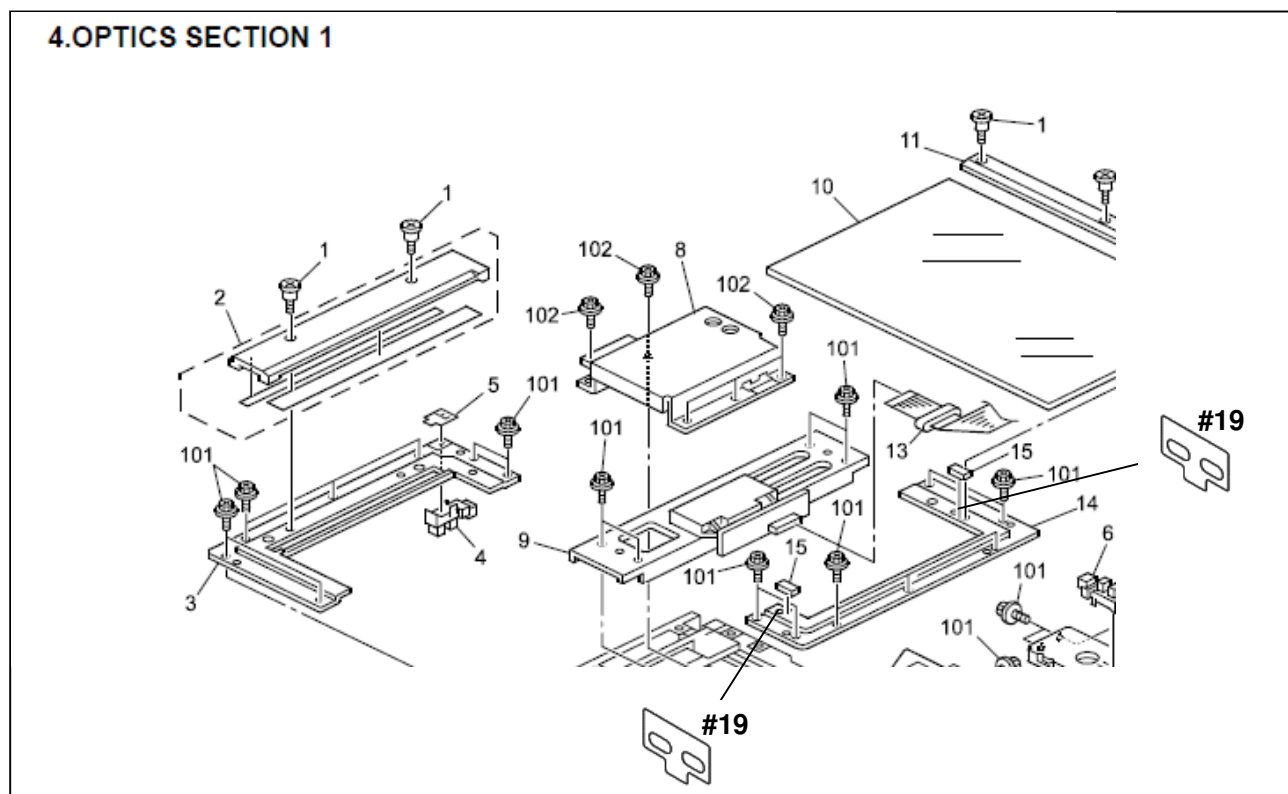
**Change:** The indexes of the illustration were changed.

**Reason:** Enhanced safety

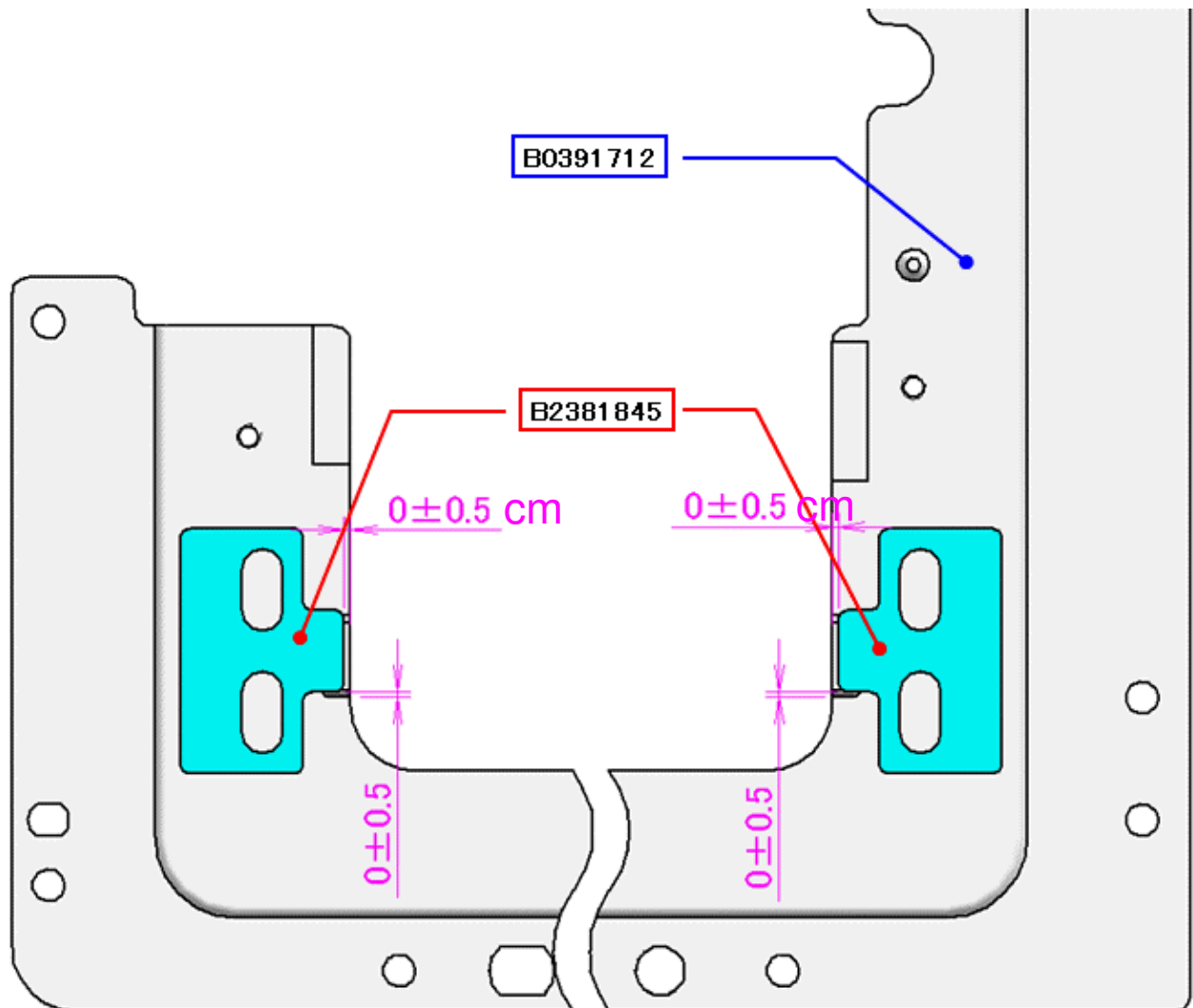
**Production line:**

The above part has been applied to the production lines from December 2009 in the factory.

See the following diagram for the corrected illustration.



Where to attach the parts:



**Reissued: 17-Jun-10**

Model: PD-C4(K-C3)	Date: 03-Mar-10	No.: RB245030a
--------------------	-----------------	----------------

**RTB Reissue**

The items in bold italics have been added.

Subject: Firmware Release Note: BICU_IC(PD-C4)		Prepared by: M.Saiki	
From: 2nd Overseas Tech Support Sec., 2nd PQM Dept.			
Classification:	<input type="checkbox"/> Troubleshooting	<input type="checkbox"/> Part information	<input type="checkbox"/> Action required
	<input type="checkbox"/> Mechanical	<input type="checkbox"/> Electrical	<input type="checkbox"/> Service manual revision
	<input type="checkbox"/> Paper path	<input type="checkbox"/> Transmit/receive	<input type="checkbox"/> Retrofit information
	<input type="checkbox"/> Product Safety	<input checked="" type="checkbox"/> Other (Firmware)	<input checked="" type="checkbox"/> Tier 2

This RTB has been issued to announce the firmware release information for the **BICU\_IC**.

Version	Program No.	Effective Date
<b><i>0.06</i></b>	<b><i>B2455537A</i></b>	<b><i>July 2010 production</i></b>
0.05	B2455537	1st Mass production

Version	Modified Points or Symptom Corrected
<b><i>0.06</i></b>	<b><i>1st Release for Gestetner model.</i></b>
0.05	1st Mass production

Model: K-C3		Date: 13-Apr-10	No.: RB245031
Subject: Parts Catalog Correction for PD-C3		Prepared by: M.Saiki	
From: 2nd Overseas Tech Support Sec., 2nd PQM Dept.			
Classification:	<input type="checkbox"/> Troubleshooting <input type="checkbox"/> Mechanical <input type="checkbox"/> Paper path <input type="checkbox"/> Product Safety	<input checked="" type="checkbox"/> Part information <input type="checkbox"/> Electrical <input type="checkbox"/> Transmit/receive <input type="checkbox"/> Other (     )	<input type="checkbox"/> Action required <input type="checkbox"/> Service manual revision <input type="checkbox"/> Retrofit information <input type="checkbox"/> Tier 2

## Target Model: PD-C3 (B245-61)

Old part number	New part number	Description	Q'ty	Int	Page	Index	Note
04504012N		TAPPING SCREW:4X12	1 - 0	X/X	9	101	A
B2451232	B2451231	PRESSURE PLATE:ASS'Y	1 - 1	X/X	9	11	A
B4061384		FEELER - PLATEN COVER	1 - 0	X/X	9	8	A

**A: X/O as a Set**

**Change:** The shape of the pressure plate was changed.

**Reason:** To facilitate assembly.

**Important:** When you replace any of these parts, make sure to remove or replace all the other parts **together as a set**.

Model: K-C3		Date: 27-Apr-10	No.: RB245032
Subject: MAC Address Change Notification		Prepared by: M. Saiki	
From: 2nd Overseas Tech Support Sec. 2nd PQM Dept			
Classification:	<input checked="" type="checkbox"/> Troubleshooting <input type="checkbox"/> Mechanical <input type="checkbox"/> Paper path <input type="checkbox"/> Product Safety	<input checked="" type="checkbox"/> Part information <input type="checkbox"/> Electrical <input type="checkbox"/> Transmit/receive <input type="checkbox"/> Other (     )	<input type="checkbox"/> Action required <input type="checkbox"/> Service manual revision <input type="checkbox"/> Retrofit information

## MAC Address Change Notification

### Overview:

- The number of available MAC address codes used on Ricoh MFP/LPs has been depleted. Therefore, a new vendor code has been assigned to all affected models.
- The part number of the PCB used on the model K-C3 was changed as follows:

Old Part Number	New Part Number	Description	I/C
B8435728	B8435729	PCB:TYPE-DM:K-C3:ASS'Y	O/O

### Production Line:

Applied from first mass production in January, 2010.

### Connection issues and solutions:

- MFP/LPs that use the new MAC address have connection issues with the following Ricoh software products:

#### SmartDeviceMonitor for Admin/SmartDeviceMonitor for Admin V8/Accounting Report Package

1. The User Management Tool and the Addressbook Management Tool do not work.
2. Printing jobs and machine status cannot be reset.
3. The MFP/LP's NIB password cannot be changed.
4. The NIB Setting Tool does not work.

#### SmartDeviceMonitor for Client / DeskTopBinder SmartDeviceMonitor for Client

Automatic protocol/port number specification does not work when adding the SmartDeviceMonitor port.

#### Web Smart DeviceMonitor

The device is detected as another vendor's product.

#### RC Gate S

The device is detected as another vendor's product.

Model: K-C3

Date: 27-Apr-10

No.: RB245032

- The issues described above have been resolved by the following update versions, which have already been released to the field. If any of these issues occur, update to the following version(s) or newer:

Product Name	Version	Web Release date *
SmartDeviceMonitor for Admin V7	V7.4.3.0	Oct. 23, 2009
DeskTopBinder SmartDeviceMonitor for Client	V8.7.5.0	Oct. 23, 2009
DeskTopBinder lite	V5.4.1.1	Nov. 06, 2009
Web SmartDeviceMonitor	V02.07.00-04	Dec. 25, 2009
RC Gate S	V01.01.03	Dec. 10, 2009
SmartDeviceMonitor for Admin V8	V8.1.1.0	Nov. 06, 2009
SmartDeviceMonitor Accounting Report Package	V1.1.1.0	Nov. 06, 2009

## Other important notes:

- The controller firmware was also modified in order to support both the old and new MAC addresses. **System/Copy Firmware version 1.11** and later support the MAC addresses, but an SC error may occur if the old firmware is installed on a PCB with the new MAC address.
- PCBs that contain the old MAC address will still be available under P/N B8435728, but the quantities are **very limited**. Therefore, only order this board **if the customer needs to continue using the old firmware** (such as a customized version of firmware) when the PCB breaks.

For regular parts replacement, please order the board containing the new MAC address, and advise the customer to update the utility as necessary.



Model: K-C3/PD-C2		Date: 14-Jun-10	No.: RB245033
Subject: PCIL Model Name Correction_Frame:Fusing		Prepared by: M.Saiki	
From: 2nd Overseas Tech Support Sec., 2nd PQM Dept.			
Classification:	<input type="checkbox"/> Troubleshooting <input checked="" type="checkbox"/> Part information <input type="checkbox"/> Action required <input type="checkbox"/> Mechanical <input type="checkbox"/> Electrical <input type="checkbox"/> Service manual revision <input type="checkbox"/> Paper path <input type="checkbox"/> Transmit/receive <input type="checkbox"/> Retrofit information <input type="checkbox"/> Product Safety <input type="checkbox"/> Other (      ) <input type="checkbox"/> Tier 2		

**The model name for the following part change information list is corrected:**

**Error:**

Model	Code	PCIL Nr.	Old part number	New part number	Description	Old Q'ty	New Q'ty	Int	Page	Index
<b>K-C3</b>	B245	200903	B1214103	B2824103	FRAME:FUSING	1	1	O/O	41	37

**Correct:**

Model	Code	PCIL Nr.	Old part number	New part number	Description	Old Q'ty	New Q'ty	Int	Page	Index
<b>PD-C2</b>	B245	201005	B1214103	B2824103	FRAME:FUSING	1	1	O/O	41	37

**Change/Reason:** Model name shown in PCIL 200903 was incorrect.

Model: K-C3		Date: 18-Jun-10	No.: RB245034
Subject: Parts Catalog Correction_OP_Case_K-C3		Prepared by: M.Saiki	
From: 2nd Overseas Tech Support Sec., 2nd PQM Dept.			
Classification:	<input type="checkbox"/> Troubleshooting <input type="checkbox"/> Mechanical <input type="checkbox"/> Paper path <input type="checkbox"/> Product Safety	<input checked="" type="checkbox"/> Part information <input type="checkbox"/> Electrical <input type="checkbox"/> Transmit/receive <input type="checkbox"/> Other (     )	<input type="checkbox"/> Action required <input type="checkbox"/> Service manual revision <input type="checkbox"/> Retrofit information <input type="checkbox"/> Tier 2

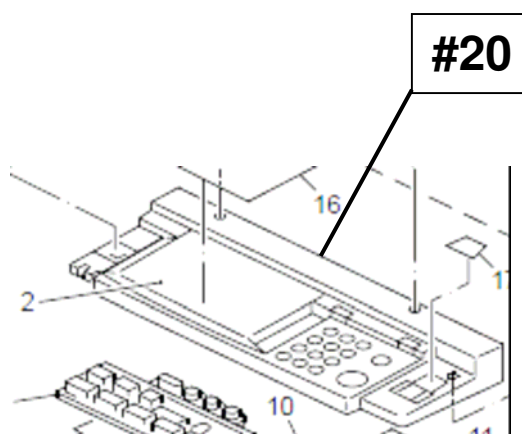
Incorrect part number	Correct part number	Description	Q'ty	Int	Page	Index	Note
	B2431451	CASE:OPERATION SUB-UNIT	0 - 1		13	#20	

#: New index

**Change:** An index in the illustration was added.

**Reason:** Correction of illustration and part number.

**See the following diagram for the corrected illustration.**



Model: PD-C3		Date: 18-Jun-10	No.: RB245035
Subject: Parts Catalog Correction_OP_Case_PD-C3		Prepared by: M.Saiki	
From: 2nd Overseas Tech Support Sec., 2nd PQM Dept.			
Classification:	<input type="checkbox"/> Troubleshooting <input type="checkbox"/> Mechanical <input type="checkbox"/> Paper path <input type="checkbox"/> Product Safety	<input checked="" type="checkbox"/> Part information <input type="checkbox"/> Electrical <input type="checkbox"/> Transmit/receive <input type="checkbox"/> Other (     )	<input type="checkbox"/> Action required <input type="checkbox"/> Service manual revision <input type="checkbox"/> Retrofit information <input type="checkbox"/> Tier 2

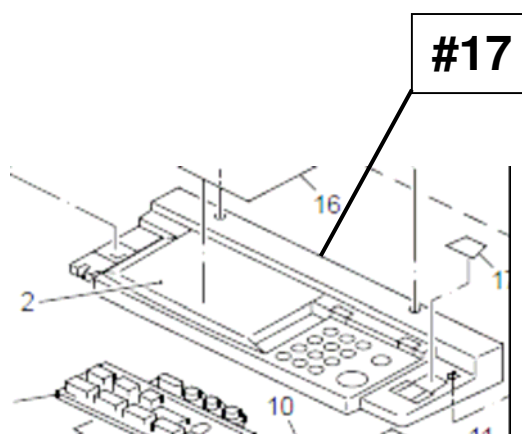
Incorrect part number	Correct part number	Description	Q'ty	Int	Page	Index	Note
	B2431451	CASE:OPERATION SUB-UNIT	0 - 1		11	#17	

#: New index

**Change:** An index in the illustration was added.

**Reason:** Correction of illustration and part number.

**See the following diagram for the corrected illustration.**



Model: K-C3		Date: 20-Aug-10	No.: RB245036
Subject: Parts Catalog Correction_K-C3_Tray heater		Prepared by: M.Saiki	
From: 2nd Overseas Tech Support Sec., 2nd PQM Dept.			
Classification:	<input type="checkbox"/> Troubleshooting <input type="checkbox"/> Mechanical <input type="checkbox"/> Paper path <input type="checkbox"/> Product Safety	<input checked="" type="checkbox"/> Part information <input type="checkbox"/> Electrical <input type="checkbox"/> Transmit/receive <input type="checkbox"/> Other (    )	<input type="checkbox"/> Action required <input type="checkbox"/> Service manual revision <input type="checkbox"/> Retrofit information <input type="checkbox"/> Tier 2

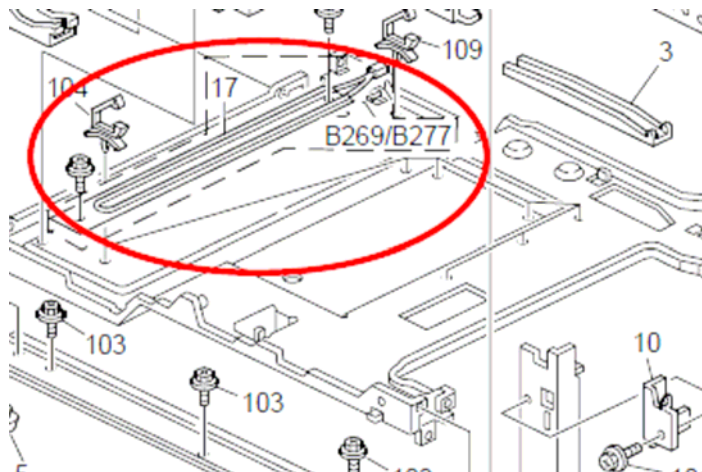
## Target Model: K-C3 (B245/B268/B269/B276/B277)

Incorrect part number	Correct part number	Description	Q'ty	Int	Page	Index	Note
B0392782		Tray Heater	1 – 0		57	17	
B0392783		Tray Heater	1 – 0		57	17	

**Change:** Part Index No.17 and the illustration were deleted.

**Reason:** Redundant index (indicating the same part number as index No.15), and the illustration was incorrect.

**Parts included in the following section of the diagram (encircled in red) are deleted.**



Model: K-C3		Date: 09-Sept-10	No.: RB245037
Subject: Parts Catalog Correction_EEPROM		Prepared by: M.Saiki	
From: 2nd Overseas Tech Support Sec., 2nd PQM Dept.			
Classification:	<input type="checkbox"/> Troubleshooting <input type="checkbox"/> Mechanical <input type="checkbox"/> Paper path <input type="checkbox"/> Product Safety	<input checked="" type="checkbox"/> Part information <input type="checkbox"/> Electrical <input type="checkbox"/> Transmit/receive <input type="checkbox"/> Other (     )	<input type="checkbox"/> Action required <input type="checkbox"/> Service manual revision <input type="checkbox"/> Retrofit information <input type="checkbox"/> Tier 2

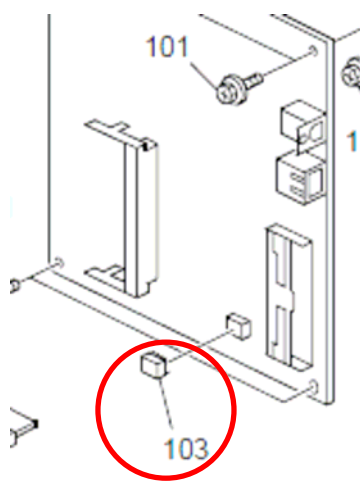
**Target Models: K-C L series, GW-C series, and DDST unit Type A/Type B.**

Old part number	New part number	Description	Q'ty	Page	Index	Model
14076612		EEPROM:AT24C64A-10PU-2.7	1 - 0	55	102	GW-C1
14076612		EEPROM:AT24C64A-10PU-2.7	1 - 0	57	103	GW-C2
14076612		EEPROM:AT24C64A-10PU-2.7	1 - 0	57	103	GW-C3
14076612		EEPROM:AT24C64A-10PU-2.7	1 - 0	55	102	ML316/ML316D
14076612		EEPROM:AT24C64A-10PU-2.7	1 - 0	57	103	ML319/ML319D
14076612		EEPROM:AT24C64A-10PU-2.7	1 - 0	3	103	DDST unit Type A / Type B

**Change:** Part number **14076612** and the illustrations were deleted.

**Reason:** EEP-ROM as a new spare part cannot be used on the GDI controller board as a single replacement component because it causes network connection failure. Please replace the controller board if you need to replace the RAM.

**Part encircled in red in the following diagram is deleted.**



Model: PD-C1/C2/C3/C4		Date: 23-Mar-11	No.: RB245038
Subject: Parts Catalog Correction_Paper Tray (Model PD-C)		Prepared by: M.Saiki	
From: 2nd Overseas Tech Support Sec., 2nd PQM Dept.			
Classification:	<input type="checkbox"/> Troubleshooting <input type="checkbox"/> Mechanical <input type="checkbox"/> Paper path <input type="checkbox"/> Product Safety	<input checked="" type="checkbox"/> Part information <input type="checkbox"/> Electrical <input type="checkbox"/> Transmit/receive <input type="checkbox"/> Other (     )	<input type="checkbox"/> Action required <input type="checkbox"/> Service manual revision <input type="checkbox"/> Retrofit information <input type="checkbox"/> Tier 2

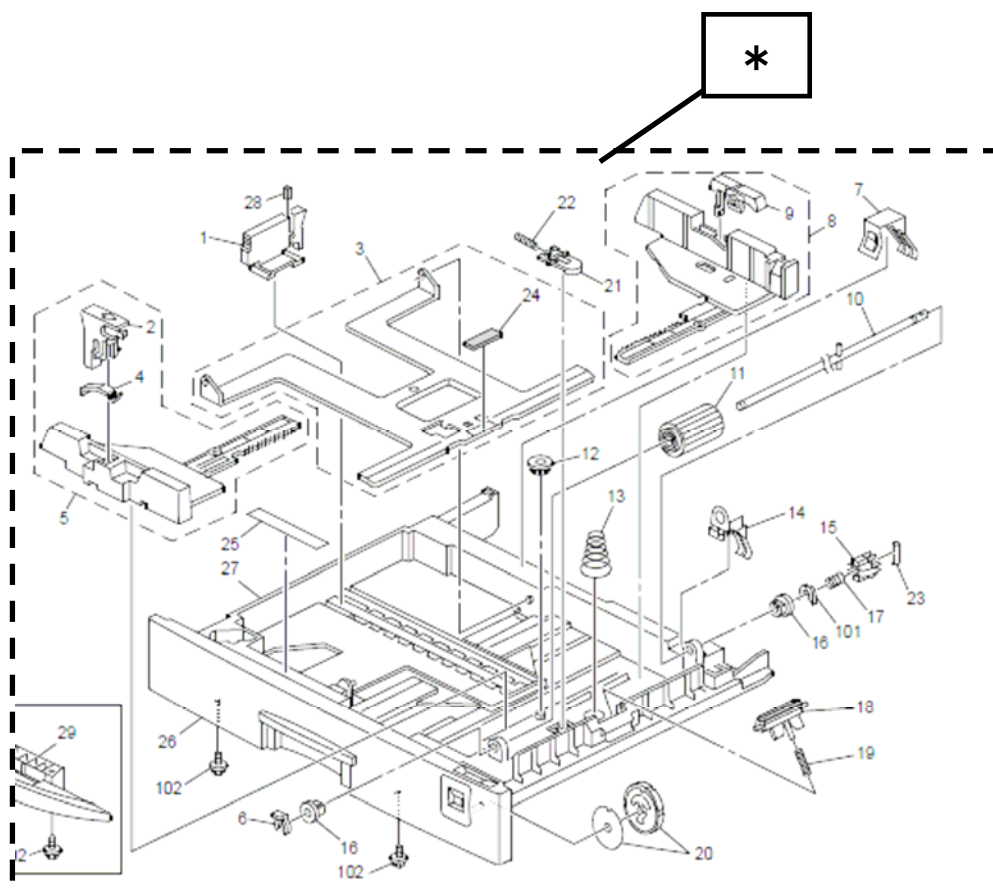
## Target Models: PD-C1, -C2, -C3, -C4

Incorrect part number	Correct part number	Description	Q'ty	Int	Page	Index	Note
	B2452840	PAPER TRAY:PD-C2:ASS'Y	0 - 1		23	*	

**Change:** An index in the illustration was added.

**Reason:** Correction of illustration and part number.

See the following diagram for the corrected illustration.



Model: K-C3		Date: 08-Nov-11	No.: RB245039
Subject: Parts Catalog Correction_Sheet-Operation Panel		Prepared by: M.Saiki	
From: 2nd Tech Service Sect., MFP/P Tech Service Dept.			
Classification:	<input type="checkbox"/> Troubleshooting <input type="checkbox"/> Mechanical <input type="checkbox"/> Paper path <input type="checkbox"/> Product Safety	<input checked="" type="checkbox"/> Part information <input type="checkbox"/> Electrical <input type="checkbox"/> Transmit/receive <input type="checkbox"/> Other (     )	<input type="checkbox"/> Action required <input type="checkbox"/> Service manual revision <input type="checkbox"/> Retrofit information <input type="checkbox"/> Tier 2

Old part number	New part number	Description	Q'ty	Int	Page	Index	Note
	B2441473	SHEET:OPERATION PANEL:CHN			13	16	

**Change/Reason:** The part number was missing from the parts catalog.

**See the following diagram for the corrected part.**

### 3.OPERATION PANEL

