

Reissued: 14-Sep-09

Model: B-C3.5(Katana-C1.5)	Date: 21-May-08	No.: RD101001a
-----------------------------------	-----------------	----------------

RTB Reissue

The items in bold italics have been corrected.

Subject: Firmware Release Note:Option IPDS		Prepared by: T.Tadokoro	
From: PPBG QA/Service Planning Dept.			
Classification:	<input type="checkbox"/> Troubleshooting <input type="checkbox"/> Mechanical <input type="checkbox"/> Paper path <input checked="" type="checkbox"/> Other ()	<input type="checkbox"/> Part information <input type="checkbox"/> Electrical <input type="checkbox"/> Transmit/receive	<input type="checkbox"/> Action required <input type="checkbox"/> Service manual revision <input type="checkbox"/> Retrofit information

This RTB has been issued to announce the firmware release information for the **Option IPDS**.

Version	Program No.	Effective Date
4.564	D3826101A	August 2009 production
4.555	D3826101	1st Mass production

Version	Modified Points or Symptom Corrected
4.564	Symptom corrected: 1. Non-IPDS jobs waiting in the print queue are not processed after an IPDS job finishes printing. Note: Requires Printer firmware (version 6.05 or later) and IPDS firmware (version 4.564 or later). 2. SC997 is generated when a paper jam occurs. 3. The device cannot staple and only prints the error report if IPDS job that contained the PFC(Presentation Fidelity Control) commands is submitted with staple. 4. Fixed: Mixed simplex/duplex IPDS jobs result in the device stalling with the error "Internal Error 0x0040C" displayed on the operation panel. 5. Any font that is not in CFF "Compact Font Format" will not be printed in IPDS jobs.
4.555	1st Mass production

Reissued: 07-Sep-09

Model: B-C3.5(Katana-C1.5)	Date: 21-May-08	No.: RD101002b
----------------------------	-----------------	----------------

RTB Reissue

The items in bold italics have been added.

Subject: Firmware Release Note: Option PS3		Prepared by: T.Tadokoro	
From: PPBG QA/Service Planning Dept.			
Classification:	<input type="checkbox"/> Troubleshooting	<input type="checkbox"/> Part information	<input type="checkbox"/> Action required
	<input type="checkbox"/> Mechanical	<input type="checkbox"/> Electrical	<input type="checkbox"/> Service manual revision
	<input type="checkbox"/> Paper path	<input type="checkbox"/> Transmit/receive	<input type="checkbox"/> Retrofit information
	<input checked="" type="checkbox"/> Other ()		

This RTB has been issued to announce the firmware release information for the **Option PS3**.

Version	Program No.	Effective Date
1.02	<i>B6135130B</i>	<i>Oct 2009 production</i>
1.01	B6135130A	Nov 2008 production
1.00	B6135130	1st Mass production.

Version	Modified Points or Symptom Corrected
1.02	<i>Symptom corrected:</i> <i>1. The data-in LED just blinks and nothing prints if a PDF direct print job containing a large number of fonts and/or a lot of pages is submitted to the device.</i> <i>2. The Euro mark (currency) is garbled in jobs submitted via PDF direct print.</i>
1.01	<i>Symptom corrected:</i> <ul style="list-style-type: none"> <i>When PS is printed, the image rotates by 180 degrees.</i> <i>A Segmentation Fault occurs when printing a specific job. (When True Type font (Type42) is used.)</i> <i>A PS error (Syntax Error) occurs when printing a specific job.</i> <i>When the PDF data with a lot of pages is printed, it takes time for the first page to print.</i> <i>A limit check error occurs when printing plural jobs.</i>
1.00	1st Mass production.

Reissued: 07-Sep-09

Model: B-C3.5(Katana-C1.5)	Date: 21-May-08	No.: RD101003c
----------------------------	-----------------	----------------

RTB Reissue

The items in bold italics have been added.

Subject: Firmware Release Note: Printer		Prepared by: T.Tadokoro	
From: PPBG QA/Service Planning Dept.			
Classification:	<input type="checkbox"/> Troubleshooting	<input type="checkbox"/> Part information	<input type="checkbox"/> Action required
	<input type="checkbox"/> Mechanical	<input type="checkbox"/> Electrical	<input type="checkbox"/> Service manual revision
	<input type="checkbox"/> Paper path	<input type="checkbox"/> Transmit/receive	<input type="checkbox"/> Retrofit information
	<input checked="" type="checkbox"/> Other ()		

This RTB has been issued to announce the firmware release information for the **Printer**.

Version	Program No.	Effective Date
6.05	B8405523D	August 2009 production
5.23	B8405523C	February 2009 production
5.22	B8405523B	August 2008 production
5.21	B8405523A	1st Mass production

Version	Modified Points or Symptom Corrected
6.05	<p>Symptom corrected:</p> <ol style="list-style-type: none"> <i>If printing of the IPDS Font List encounters certain recoverable errors (paper out, no paper, paper mismatch) and then the Clear/Stop button is pressed, the device will lockup. If this happened, printing was not possible until the device was rebooted.</i> <i>If the device receives a non-IPDS job while it is processing an IPDS job, the device will stall.</i> <i>The device might stall if an IPDS job draws pages from both the interposer and an MFP tray, and a jam occurs.</i> <i>If any non-IPDS job in the print queue is deleted while receiving an IPDS job, the device will stall.</i> <i>WIM: Job > Current/Waiting Jobs > Delete Reservation</i> <i>Operation Panel: Job List > Delete Reservation</i> <i>If printing of an IPDS job is interrupted by an error requiring operator attention (paper jam, cover open, etc.), an alert is sent to the host after the error state has been recovered, instead of when the device first enters the error state.</i> <i>If the Auto Continue setting is "Immediate" and the source tray runs out of paper, the device will stall. This only occurred if the paper ran out after several small jobs (30 or 40) were submitted back to back.</i> <i>Non-IPDS jobs waiting in the print queue are not processed after an IPDS job finishes printing.</i> <p>Other changes:</p> <ol style="list-style-type: none"> <i>IPDS jobs can no longer be deleted from the print queue.</i> <i>WIM: Job > Current/Waiting Jobs > Delete Reservation</i> <i>Operation Panel: Job List > Delete Reservation</i> <i>Note: This change was made because deleting IPDS jobs from the print queue</i>

Reissued: 07-Sep-09

Model: B-C3.5(Katana-C1.5)		Date: 21-May-08	No.: RD101003c
Version	Modified Points or Symptom Corrected		
	<i>stalled the device.</i>		
5.23	<p>Symptom corrected:</p> <ol style="list-style-type: none"> 1. If a media type is disabled using SP5-047-001, this media type will be selected from WIM's IPDS Form List. 2. IPDS jobs that use a media type that doesn't support duplex might cause the device to stall. 3. If Image horizontal position is adjusted (via the driver) for a job that uses Perfect Binding and duplex, the image on the back side of the page will be shifted in the wrong direction. 4. Jobs submitted with Perfect Binding and Chaptering will cause the device to stall after printing the first chapter. "Printing" is displayed on the operation panel. 5. Limitless Paper Feed might not work if 2 or more forms are used in an IPDS job and 1 of the forms is assigned to 2 or more trays. Note: Use of the fix might slow IPDS printing. For this reason it was implimented as a BitSw (BitSw 6-1 = 1). 6. When an IPDS form is assigned to a tray, non-IPDS jobs that feed from that tray will only be able to automatically switch trays to a tray that has the same IPDS form as the originally assigned tray. If such a tray does not exist, the tray will not be switched and the job will not be printed. No indication will be given. 7. IPDS jobs with both duplex and blank pages will appear to stall if a jam occurs. 8. If a job is automatically reset by IPDS due to a paper jam and the next job sent to the printer prints has different print settings (source tray, paper type, paper size, etc.) than the reset job, the device will stall. 9. The value of "Characters Per Inch" in the IPDS menu on the operation panel is displayed as 10 times the actual value. This was a display issue only and did not affect printing. 10. WIM becomes unusable after Turkish or Catalan are selected as the WIM language. Configuring Turkish or Catalan will result in WIM being totally inaccessible until the language is changed and NCS memory is cleared (SP5-801-011). <p>Note: To fix this problem, Websys firmware (version 1.23 or later), Printer firmware (version 5.23 or later) and Web Uapl firmware (version 2.03 or later) need to be applied to the device.</p> <ol style="list-style-type: none"> 11. The PJI command "INFO VARIABLES" causes devices with a Perfect Binder, to stall. Note: An example of a program that submits this PJI command is UltraWare from Alto Imaging Technologies inc. 12. A jam or other minor error affecting an IPDS job might cause the device to stall. 13. If an IPDS job is spooled, the device will stall and need to be rebooted. 		
5.22	<p>Symptoms Corrected:</p> <ul style="list-style-type: none"> • Upon printing from a SAP environment, the printer hangs (freezes). • Upon printing customer Excel files with PCL6 driver, the printer hangs. • Memory overflow occurs and jobs are cancelled when PCL data are printed in large volumes. 		

Reissued: 07-Sep-09

Model: B-C3.5(Katana-C1.5)		Date: 21-May-08	No.: RD101003c
Version	Modified Points or Symptom Corrected		
5.21	1st Mass production Symptom corrected: 1. An error occurs printing in IPDS mode, when only the Perfect Binder Inserter is connected. (Issue does not occur with the Cover Interposer Tray is installed.) Measures: The Perfect Binder Inserter signal is disregarded.		

Model: B-C3.5 (Katana-C1.5 Type-A/B/C)	Date: 23-May-08	No.: RD101004
---	-----------------	---------------

Subject: Firmware Release Note: LCDC		Prepared by: T.Tadokoro	
From: PPBG QA/Service Planning Dept.			
Classification:	<input type="checkbox"/> Troubleshooting <input type="checkbox"/> Mechanical <input type="checkbox"/> Paper path <input checked="" type="checkbox"/> Other ()	<input type="checkbox"/> Part information <input type="checkbox"/> Electrical <input type="checkbox"/> Transmit/receive	<input type="checkbox"/> Action required <input type="checkbox"/> Service manual revision <input type="checkbox"/> Retrofit information

This RTB has been issued to announce the firmware release information for the **LCDC**.

LCDC (NA)

Version	Program No.	Effective Date
2.01	B2345321C	1st Mass production.

LCDC (NA)

Version	Modified Points or Symptom Corrected
2.01	1st Mass production.

Model: B-C3.5 (Katana-C1.5 Type-A/B/C)	Date: 23-May-08	No.: RD101005
---	-----------------	---------------

Subject: Firmware Release Note: LCDC		Prepared by: T.Tadokoro	
From: PPBG QA/Service Planning Dept.			
Classification:	<input type="checkbox"/> Troubleshooting <input type="checkbox"/> Mechanical <input type="checkbox"/> Paper path <input checked="" type="checkbox"/> Other ()	<input type="checkbox"/> Part information <input type="checkbox"/> Electrical <input type="checkbox"/> Transmit/receive	<input type="checkbox"/> Action required <input type="checkbox"/> Service manual revision <input type="checkbox"/> Retrofit information

This RTB has been issued to announce the firmware release information for the **LCDC**.

LCDC (EU)

Version	Program No.	Effective Date
2.01	B2345322C	1st Mass production.

LCDC (EU)

Version	Modified Points or Symptom Corrected
2.01	1st Mass production.

Reissued: 15-Jun-10

Model: B-C3.5 (Katana-C1.5 Type-A/B/C)	Date: 23-May-08	No.: RD101006d
---	-----------------	----------------

Subject: Firmware Release Note: Engine		Prepared by: T. Mimura	
From: PPBG Service Planning Dept.			
Classification:	<input type="checkbox"/> Troubleshooting <input type="checkbox"/> Mechanical <input type="checkbox"/> Paper path <input checked="" type="checkbox"/> Other ()	<input type="checkbox"/> Part information <input type="checkbox"/> Electrical <input type="checkbox"/> Transmit/receive	<input type="checkbox"/> Action required <input type="checkbox"/> Service manual revision <input type="checkbox"/> Retrofit information

This RTB has been issued to announce the firmware release information for the **Engine**.

Version	Program No.	Effective Date
5.23:20	D1015223D	June 2010 production
5.22:20	D1015223C	November 2008 production
5.21:20	D1015223B	August 2008 production
5.20:20	D1015223A	July 2008 production
5.19 :20	D1015223	1st Mass production

Version	Modified Points or Symptom Corrected
5.23:20	Symptoms Corrected: <ul style="list-style-type: none"> - Machine stall in DF jam - SC670 - Jam 57 - GB5000: Machine inoperable in SP mode - RB5000: Jam 146 in a ring bind job; sheet remains on the exit sensor of the Cover Interposer - Jam 111; SR5000 output, in a job containing different paper sizes in a configuration consisted of the GB5000 - Jam 146 in a Z-folding job when feeding from the Cover Interposer - Additional fix for SC670 - Supplied amount of toner is insufficient in "automatic toner supply" - Supplied amount of toner is excessive in "automatic toner supply"
5.22:20	Other changes: The specification of the initialization processing of CPU is changed.
5.21:20	Where this engine firmware is to be used, ensure other firmware versions are as below (or newer). If firmware versions are not as indicated below, please update firmware. Engine : D1015223B (5.21:20) System/Copy : D1015541B (6.01) LCDC(NA) : B2345321C (2.01) (EU) : B2345322C (2.01) Interposer : B8355510B (02.050:32) Language : B2345329D (2.01) Animation : D1015544 (1.06) NCS : D1015542A (5.73.1) Symptom Corrected:

Reissued: 15-Jun-10

Model: B-C3.5 (Katana-C1.5 Type-A/B/C)		Date: 23-May-08	No.: RD101006d
Version	Modified Points or Symptom Corrected		
	Printing stops when paper is fed continuously from the Inserter.		
5.20:20	Symptom Corrected: <ul style="list-style-type: none">- Plocmatic cannot be connected to the Perfect Binder or to the Ring Binder, at the same time.- Jam 7 occurs when feeding DLT from Tray 5.		
5.19 :20	1st Mass production		

Reissued: 26-Aug-09

Model: B-C3.5 (Katana-C1.5 Type-A/B/C)	Date: 23-May-08	No.: RD101007b
---	-----------------	----------------

RTB Reissue

The items in bold italics have been changed.

Subject: Firmware Release Note: Scanner		Prepared by: T.Tadokoro	
From: PPBG QA/Service Planning Dept.			
Classification:	<input type="checkbox"/> Troubleshooting <input type="checkbox"/> Mechanical <input type="checkbox"/> Paper path <input checked="" type="checkbox"/> Other ()	<input type="checkbox"/> Part information <input type="checkbox"/> Electrical <input type="checkbox"/> Transmit/receive	<input type="checkbox"/> Action required <input type="checkbox"/> Service manual revision <input type="checkbox"/> Retrofit information

This RTB has been issued to announce the firmware release information for the **Scanner**.

Version	Program No.	Effective Date
<i>b3_2.20</i>	<i>B8405560A</i>	<i>August 2009 production</i>
b3_2.19	B8405560	1st Mass production.

Version	Modified Points or Symptom Corrected
<i>b3_2.20</i>	<p><i>Symptom corrected:</i></p> <ol style="list-style-type: none"> <i>Scan to NCP fails if all of the following conditions are met:</i> <ul style="list-style-type: none"> <i>The destination is specified using the IP address.</i> <i>The Novell server and the device are in different subnets.</i> <i>The subnet routers filter SLP multicasts.</i> <p><i>Note: Requires System firmware (version 6.05 or later) and Scanner firmware (version 2.20 or later).</i></p> <ol style="list-style-type: none"> <i>Scan to NCP fails or takes a long time to complete if the IPX protocol is used and there are more than 2 Novell Directory Services (NDS) servers in the network hierarchy.</i> <p><i>Note: Requires System firmware (version 6.05 or later) and Scanner firmware (version 2.20 or later).</i></p>
b3_2.19	1st Mass production.

Reissued: 26-Aug-09

Model: B-C3.5 (Katana-C1.5 Type-A/B/C)	Date: 23-May-08	No.: RD101008f
---	-----------------	----------------

Subject: Firmware Release Note: System		Prepared by: T.Tadokoro	
From: PPBG QA/Service Planning Dept.			
Classification:	<input type="checkbox"/> Troubleshooting <input type="checkbox"/> Mechanical <input type="checkbox"/> Paper path <input checked="" type="checkbox"/> Other ()	<input type="checkbox"/> Part information <input type="checkbox"/> Electrical <input type="checkbox"/> Transmit/receive	<input type="checkbox"/> Action required <input type="checkbox"/> Service manual revision <input type="checkbox"/> Retrofit information

This RTB has been issued to announce the firmware release information for the **System**.

System

Version	Program No.	Effective Date
6.05	D1015541F	August 2009 production
6.04	D1015541E	March 2009 production
6.03	D1015541D	October 2008 production
6.02	D1015541C	September 2008 production
6.01	D1015541B	July 2008 production
6.00	D1015541A	May 2008 production
5.20.2	D1015541	1st Mass production.

System

Version	Modified Points or Symptom Corrected
6.05	<p>Symptom corrected:</p> <ol style="list-style-type: none"> All pages of a PDF file are blank if created by scanning with the Custom Size setting. A problem in our implementation of AppleTalk affecting the ability of our devices to join an AppleTalk Zone through some Seed Routers. <ul style="list-style-type: none"> Scan to NCP fails if all of the following conditions met: <ul style="list-style-type: none"> The destination is specified using the IP address. The Novell server and the device are in different subnets. The subnet routers filter SLP multicasts. <p>Note: Requires System firmware (version 6.05 or later) and Scanner firmware (version 2.20 or later).</p> <ol style="list-style-type: none"> Scan to NCP fails or takes a long time to complete if the IPX protocol is used and there are more than 2 Novell Directory Services (NDS) servers in the network hierarchy. <p>Note: Requires System firmware (version 6.05 or later) and Scanner firmware (version 2.20 or later).</p> <ol style="list-style-type: none"> In a "duplex-double-copy" job (duplicating an image on one side, and duplicating another image on the other side), the image on the face-down side is shifted when the 2 images have different resolution. Information on the SMC report is not displayed correctly.(SP7504)
6.04	<p>Symptom corrected:</p> <ol style="list-style-type: none"> When machine configuration consists of a connection with the Z-folding Unit and a non-connection of the Ring Binder, the crease setting made on the program cannot be invoked.

Reissued: 26-Aug-09

Model: B-C3.5 (Katana-C1.5 Type-A/B/C)			Date: 23-May-08	No.: RD101008f
Version	Modified Points or Symptom Corrected			
	<ol style="list-style-type: none"> 2. When operating gang-up print from the document box, the staple position is reversed in right/left. 3. When tab sheet runs out during a tab sheet print job, and the sheet is replenished to continue the job, print is made on the incorrect tab sheet. 4. SC990 occurs when setting a job of more than 102 pages from the Document Box. 5. SC955 6. Continuous printing of IPDS jobs for 5-6 hours results in the error message "Functional problem detected." being displayed on the operation panel. This is recorded in the error log as an SC687 error. 7. If a user logs in and out repeatedly to the device using an IC card (Card Authentication Package option) at the same time as the address book is being updated by a delivery server such as ScanRouter, the device might stall. 8. The device might stall with the SC955 if the jobs that stored to use a printer with 1200dpi are printed with the following conditions. <ul style="list-style-type: none"> - Paper size is B4, LG or 8K(for china only). - The margin (Document Server > To Print Screen > Edit / Stamp > Margin Adj.) is set from the device when teh stored job is printed. 9. The Job log will stop recording User ID, Username or Usercode in the Printer's Job log if WIM is accessed more than 300 times using authentication. 10. User might success to log in to the device even if that user account cannot have the privilege to access the device. 11. If a user tries to logout at the same time as another user is trying to retrieve UserCodes via WebImageMonitor or Web SmartDeviceMonitor V2, the device might stall with the message "Logging out.... Please wait". 12. When Multiple jobs are printed using the Cover Interposer Tray, print speed might be reduced. 			
6.03	Symptom Corrected: - SC990 occurs when printing 16 pages per sheet on the driver side.			
6.02	Symptom Corrected: - A spanner mark is displayed and the error LED light remains ON, upon performing a specific operation when mode SC is generated.			
6.01	Symptom Corrected: - When Plockmatic is connected, stapled jobs cannot be output from the printer application program.			
6.00	Changes made: Support for new wireless LAN			
5.20.2	1st Mass production.			

Model: B-C3.5 (Katana-C1.5 Type-A/B/C)	Date: 23-May-08	No.: RD101009
---	-----------------	---------------

Subject: Firmware Release Note: Animation		Prepared by: T.Tadokoro	
From: PPBG QA/Service Planning Dept.			
Classification:	<input type="checkbox"/> Troubleshooting <input type="checkbox"/> Mechanical <input type="checkbox"/> Paper path <input checked="" type="checkbox"/> Other ()	<input type="checkbox"/> Part information <input type="checkbox"/> Electrical <input type="checkbox"/> Transmit/receive	<input type="checkbox"/> Action required <input type="checkbox"/> Service manual revision <input type="checkbox"/> Retrofit information

This RTB has been issued to announce the firmware release information for the **animation**.

Version	Program No.	Effective Date
1.06	D1015544	1st Mass production.

Version	Modified Points or Symptom Corrected
1.06	1st Mass production.

Reissued: 10-Mar-09

Model: B-C3.5 (Katana-C1.5 Type-A/B/C)	Date: 23-May-08	No.: RD101010c
---	-----------------	----------------

Subject: Firmware Release Note: Web System		Prepared by: T.Tadokoro	
From: PPBG QA/Service Planning Dept.			
Classification:	<input type="checkbox"/> Troubleshooting <input type="checkbox"/> Mechanical <input type="checkbox"/> Paper path <input checked="" type="checkbox"/> Other ()	<input type="checkbox"/> Part information <input type="checkbox"/> Electrical <input type="checkbox"/> Transmit/receive	<input type="checkbox"/> Action required <input type="checkbox"/> Service manual revision <input type="checkbox"/> Retrofit information

This RTB has been issued to announce the firmware release information for the **Web System**.

Web System

Version	Program No.	Effective Date
1.23	B8405570B	Mar 2009 production
1.22	B8405570A	May 2008 production
1.21	B8405570	1st Mass production.

Web System

Version	Modified Points or Symptom Corrected
1.23	<p>Symptom corrected:</p> <p>1. WIM becomes unusable after Turkish or Catalan are selected as the WIM language. Configuring Turkish or Catalan will result in WIM being totally inaccessible until the language is changed and NCS memory is cleared (SP5-801-011).</p> <p>Note: To fix this problem, Websys firmware (version 1.23 or later), Printer firmware (version 5.23 or later) and Web Uapl firmware (version 2.03 or later) need to be applied to the device.</p>
1.22	Changes made: Support for new wireless LAN
1.21	1st Mass production.

Reissued: 10-Mar-09

Model: B-C3.5 (Katana-C1.5 Type-A/B/C)	Date: 22-May-08	No.: RD101011b
---	-----------------	----------------

RTB Reissue

The items in bold italics have been added.

Subject: Firmware Release Note: Web Uapl		Prepared by: T.Tadokoro	
From: PPBG QA/Service Planning Dept.			
Classification:	<input type="checkbox"/> Troubleshooting <input type="checkbox"/> Part information <input type="checkbox"/> Action required		
	<input type="checkbox"/> Mechanical <input type="checkbox"/> Electrical <input type="checkbox"/> Service manual revision		
	<input type="checkbox"/> Paper path <input type="checkbox"/> Transmit/receive <input type="checkbox"/> Retrofit information		
	<input checked="" type="checkbox"/> Other ()		

 This RTB has been issued to announce the firmware release information for the **Web Uapl**.

Version	Program No.	Effective Date
2.03	<i>B8405590A</i>	<i>March 2009 production.</i>
2.02	B8405590	1st Mass production.

Version	Modified Points or Symptom Corrected
2.03	<i>Symptom corrected:</i> <i>1. WIM becomes unusable after Turkish or Catalan are selected as the WIM language. Configuring Turkish or Catalan will result in WIM being totally inaccessible until the language is changed and NCS memory is cleared (SP5-801-011).</i> <i>Note: To fix this problem, Websys firmware (version 1.23 or later), Printer firmware (version 5.23 or later) and Web Uapl firmware (version 2.03 or later) need to be applied to the device.</i>
2.02	1st Mass production.

Reissued: 26-Aug-09

Model: B-C3.5 (Katana-C1.5 Type-A/B/C)	Date: 23-May-08	No.: RD101012c
---	-----------------	----------------

RTB Reissue

The items in bold italics have been changed.

Subject: Firmware Release Note: Netfile		Prepared by: T.Tadokoro	
From: PPBG QA/Service Planning Dept.			
Classification:	<input type="checkbox"/> Troubleshooting <input type="checkbox"/> Part information <input type="checkbox"/> Action required		
	<input type="checkbox"/> Mechanical <input type="checkbox"/> Electrical <input type="checkbox"/> Service manual revision		
	<input type="checkbox"/> Paper path <input type="checkbox"/> Transmit/receive <input type="checkbox"/> Retrofit information		
	<input checked="" type="checkbox"/> Other ()		

This RTB has been issued to announce the firmware release information for the **Netfile**.

Netfile

Version	Program No.	Effective Date
1.02	B8405580B	August 2009 production
1.01	B8405580A	February 2009 production
1.00	B8405580	1st Mass production.

Netfile

Version	Modified Points or Symptom Corrected
1.02	Symptom corrected: 1. Either of the following problems might occur if the transferring of logs from the device using Web SmartDeviceMonitor ver 2.x without the powercycle. <ul style="list-style-type: none"> The 404 Not Found error will be shown if the WIM document server is accessed. The device will stall if captured data is transfered to a delivery server such as ScanRouter. 2. Duplicate logs might be transfered to Web SmartDeviceMonitor ver 2.x.
1.01	Symptom corrected: 1. The web service might stall if the device settings are changed via WIM or the Operation Panel at the same time as ScanRouter is accessing the device. 2. The stored files might not be able to be downloaded via WIM.
1.00	1st Mass production.

Reissued: 03-Sep-10

Model: B-C3.5 (Katana-C1.5 Type-A/B/C)	Date: 23-May-08	No.: RD101013c
---	-----------------	----------------

RTB Reissue

The items in bold italics have been corrected or added.

Subject: Firmware Release Note: NCS		Prepared by: T.Mimura	
From: PPBG/Service Planning Dept.			
Classification:	<input type="checkbox"/> Troubleshooting <input type="checkbox"/> Mechanical <input type="checkbox"/> Paper path <input checked="" type="checkbox"/> Other ()	<input type="checkbox"/> Part information <input type="checkbox"/> Electrical <input type="checkbox"/> Transmit/receive	<input type="checkbox"/> Action required <input type="checkbox"/> Service manual revision <input type="checkbox"/> Retrofit information

This RTB has been issued to announce the firmware release information for the **NCS**.

NCS

Version	Program No.	Effective Date
5.76	D1015542C	<i>September 2010 production</i>
5.74	D1015542B	March 2009 production
5.73.1	D1015542A	June 2008 production
5.73	D1015542	1st Mass production.

NCS

Version	Modified Points or Symptom Corrected
5.76	<p><i>Symptom corrected:</i></p> <ol style="list-style-type: none"> <i>The MFP's IP address lease renewal request is incorrectly formatted and rejected by DHCP relay agents. This will result in a loss of connectivity that lasts until the MFP reinitializes the network connection (10 seconds).</i> <i>Unable to Scan to SMB to Windows 7 or Windows Server 2008 R2 destinations that have Windows Live ID Sign-in assistant installed.</i> <i>Trying and failing to login to a Scan destination three times might result in the Scanner application stalling.</i> <i>Unable to Scan to SMB to Windows 98/98SE/Me/NT 4.0 destinations specified using an IP address.</i> <i>The SMB retry function fails to retry the sending of failed SMB transfers (Scan to SMB or Fax delivery).</i> <i>Unable to retrieve the Windows group name from a Windows 2008 R2 server during Windows Authentication. Because of this, logged in users will only be granted the "Available Functions" specified for them in the Address book.</i> <i>The device is unable to assign group privileges to a logged in user if that group has a name consisting of more than 20 bytes. To address this issue, the supported group name length will be increased to 40 bytes.</i> <i>The MFP's Windows Authentication function is unable to use Kerberos when being authenticated on a Windows 2008 or Windows 2008 R2 server. The MFP will still be successfully authenticated because it is able to fail back to NTLMv2.</i> <i>After changing the MFP's DNS server address or Domain name, Scan to</i>

Reissued: 03-Sep-10

Model: B-C3.5 (Katana-C1.5 Type-A/B/C)	Date: 23-May-08	No.: RD101013c
--	-----------------	----------------

Version	Modified Points or Symptom Corrected
	<p>SMB destinations specified using a hostname might not be found.</p> <p>10. The Scan to SMB "Connection Test" fails if performed on directory located directly below a DFS root. Only the "Connection Test" failed, scanning was successful and even the "Connection Test" worked if performed on any sub-directory.</p> <p>11. The device might return an SC 819 error when browsing the network using SMB. This only occurred if SMB was browsed frequently and the device was not rebooted.</p> <p>12. If the MFP's IP address is changed to an IP address of another subnet, users will not be able to browse the network (using Scan to SMB) until the MFP is rebooted.</p> <p>Other changes:</p> <p>1. Unable to Scan to SMB to a destination that is not specified using an FQDN.</p> <p>2. Unable to Scan to SMB to destinations that are using both LM Authentication and Samba v2.x.</p> <p>3. Windows Authentication fails if the username or password includes lower-case European characters.</p> <p>4. The device's SMB timeout was too short (1sec). This caused problems when being used across subnets. For this reason, it has been increased to 10 sec.</p>
5.74	<p>Symptom corrected:</p> <ol style="list-style-type: none"> 1. The device might not be able to access the network once the Log collection tool is run. 2. IPP print jobs are cancelled. This happened very infrequently. 3. After a job consisting of a multiple of exactly 8KB (8192 bytes) is submitted via IPP, the device will no longer accept any more jobs until rebooted.
5.73.1	<p>Symptom Corrected:</p> <ul style="list-style-type: none"> - Bellini-C3.5 IPDS cannot be used.
5.73	1st Mass production.

Model: B-C3.5 (Katana-C1.5 Type-A/B/C)	Date: 20-June -08	No.: RD101014
---	-------------------	---------------

Subject: Firmware Release Note: P-Binder_B1		Prepared by: T.Tadokoro	
From: PPBG QA/Service Planning Dept.			
Classification:	<input type="checkbox"/> Troubleshooting <input type="checkbox"/> Mechanical <input type="checkbox"/> Paper path <input checked="" type="checkbox"/> Other ()	<input type="checkbox"/> Part information <input type="checkbox"/> Electrical <input type="checkbox"/> Transmit/receive	<input type="checkbox"/> Action required <input type="checkbox"/> Service manual revision <input type="checkbox"/> Retrofit information

This RTB has been issued to announce the firmware release information for the **P-Binder_B1**.

Version	Program No.	Effective Date
1.19	D3915020A	1st Mass production.

Version	Modified Points or Symptom Corrected
1.19	1st Mass production.

Model: B-C3.5 (Katana-C1.5 Type-A/B/C)	Date: 20-June -08	No.: RD101015
---	-------------------	---------------

Subject: Firmware Release Note: P-Binder_B2		Prepared by: T.Tadokoro	
From: PPBG QA/Service Planning Dept.			
Classification:	<input type="checkbox"/> Troubleshooting <input type="checkbox"/> Mechanical <input type="checkbox"/> Paper path <input checked="" type="checkbox"/> Other ()	<input type="checkbox"/> Part information <input type="checkbox"/> Electrical <input type="checkbox"/> Transmit/receive	<input type="checkbox"/> Action required <input type="checkbox"/> Service manual revision <input type="checkbox"/> Retrofit information

This RTB has been issued to announce the firmware release information for the **P-Binder_B2**.

Version	Program No.	Effective Date
1.19	D3915070A	1st Mass production.

Version	Modified Points or Symptom Corrected
1.19	1st Mass production.

Model: B-C3.5 (Katana-C1.5 Type-A/B/C)	Date: 20-June -08	No.: RD101016
---	-------------------	---------------

Subject: Firmware Release Note: P-Binder_B3		Prepared by: T.Tadokoro	
From: PPBG QA/Service Planning Dept.			
Classification:	<input type="checkbox"/> Troubleshooting <input type="checkbox"/> Mechanical <input type="checkbox"/> Paper path <input checked="" type="checkbox"/> Other ()	<input type="checkbox"/> Part information <input type="checkbox"/> Electrical <input type="checkbox"/> Transmit/receive	<input type="checkbox"/> Action required <input type="checkbox"/> Service manual revision <input type="checkbox"/> Retrofit information

This RTB has been issued to announce the firmware release information for the **P-Binder_B3**.

Version	Program No.	Effective Date
1.19	D3915730A	1st Mass production.

Version	Modified Points or Symptom Corrected
1.19	1st Mass production.

Model: B-C3.5 (Katana-C1.5 Type-A/B/C)	Date: 20-June -08	No.: RD101017
---	-------------------	---------------

Subject: Firmware Release Note: P-Binder_B5		Prepared by: T.Tadokoro	
From: PPBG QA/Service Planning Dept.			
Classification:	<input type="checkbox"/> Troubleshooting <input type="checkbox"/> Mechanical <input type="checkbox"/> Paper path <input checked="" type="checkbox"/> Other ()	<input type="checkbox"/> Part information <input type="checkbox"/> Electrical <input type="checkbox"/> Transmit/receive	<input type="checkbox"/> Action required <input type="checkbox"/> Service manual revision <input type="checkbox"/> Retrofit information

This RTB has been issued to announce the firmware release information for the **P-Binder_B5**.

Version	Program No.	Effective Date
1.19	D3915170A	1st Mass production.

Version	Modified Points or Symptom Corrected
1.19	1st Mass production.

Model: B-C3.5 (Katana-C1.5 Type-A/B/C)	Date: 20-June -08	No.: RD101018
---	-------------------	---------------

Subject: Firmware Release Note: Ring Binder_B1		Prepared by: T.Tadokoro	
From: PPBG QA/Service Planning Dept.			
Classification:	<input type="checkbox"/> Troubleshooting <input type="checkbox"/> Mechanical <input type="checkbox"/> Paper path <input checked="" type="checkbox"/> Other ()	<input type="checkbox"/> Part information <input type="checkbox"/> Electrical <input type="checkbox"/> Transmit/receive	<input type="checkbox"/> Action required <input type="checkbox"/> Service manual revision <input type="checkbox"/> Retrofit information

This RTB has been issued to announce the firmware release information for the **Ring Binder_B1**.

Version	Program No.	Effective Date
01.050 :01	D3925510	1st Mass production.

Version	Modified Points or Symptom Corrected
01.050:01	1st Mass production.

Model: B-C3.5 (Katana-C1.5 Type-A/B/C)	Date: 20-June -08	No.: RD101019
---	-------------------	---------------

Subject: Firmware Release Note: Ring Binder_B2		Prepared by: T.Tadokoro	
From: PPBG QA/Service Planning Dept.			
Classification:	<input type="checkbox"/> Troubleshooting <input type="checkbox"/> Mechanical <input type="checkbox"/> Paper path <input checked="" type="checkbox"/> Other ()	<input type="checkbox"/> Part information <input type="checkbox"/> Electrical <input type="checkbox"/> Transmit/receive	<input type="checkbox"/> Action required <input type="checkbox"/> Service manual revision <input type="checkbox"/> Retrofit information

This RTB has been issued to announce the firmware release information for the **Ring Binder_B2**.

Version	Program No.	Effective Date
01.000:01	D3925520	1st Mass production.

Version	Modified Points or Symptom Corrected
01.000:01	1st Mass production.

Model: B-C3.5 (Katana-C1.5 Type-A/B/C)	Date: 20-June -08	No.: RD101020
---	-------------------	---------------

Subject: Firmware Release Note: P-Binder_B4		Prepared by: T.Tadokoro	
From: PPBG QA/Service Planning Dept.			
Classification:	<input type="checkbox"/> Troubleshooting <input type="checkbox"/> Mechanical <input type="checkbox"/> Paper path <input checked="" type="checkbox"/> Other ()	<input type="checkbox"/> Part information <input type="checkbox"/> Electrical <input type="checkbox"/> Transmit/receive	<input type="checkbox"/> Action required <input type="checkbox"/> Service manual revision <input type="checkbox"/> Retrofit information

This RTB has been issued to announce the firmware release information for the **P-Binder_B4**.

Version	Program No.	Effective Date
1.19	D3915120A	1st Mass production.

Version	Modified Points or Symptom Corrected
1.19	1st Mass production.

Model: Bellini-C3.5 (Katana-C1.5 Type-A/B/C)	Date: 22-May-08	No.: RD101021
--	-----------------	---------------

Subject: Firmware Release Note:Language Install		Prepared by: T.Tadokoro	
From: PPBG QA/Service Planning Dept.			
Classification:	<input type="checkbox"/> Troubleshooting <input type="checkbox"/> Mechanical <input type="checkbox"/> Paper path <input checked="" type="checkbox"/> Other ()	<input type="checkbox"/> Part information <input type="checkbox"/> Electrical <input type="checkbox"/> Transmit/receive	<input type="checkbox"/> Action required <input type="checkbox"/> Service manual revision <input type="checkbox"/> Retrofit information

This RTB has been issued to announce the firmware release information for the ***Language Install.***

Version	Program No.	Effective Date
2.01	B2345329D	1st Mass production.

Version	Modified Points or Symptom Corrected
2.01	1st Mass production.

Model: Bellini-C3.5 (Katana-C1.5 Type-A/B/C)		Date: 25-Jul-08	No.: RD101022
Subject: Firmware version for Katana-C1.5 with Plockmatic or IPDS option		Prepared by: T.Tadokoro	
From: PPBG QA/Service Planning Dept.			
Classification:	<input type="checkbox"/> Troubleshooting <input type="checkbox"/> Mechanical <input type="checkbox"/> Paper path <input type="checkbox"/> Product Safety	<input type="checkbox"/> Part information <input type="checkbox"/> Electrical <input type="checkbox"/> Transmit/receive <input checked="" type="checkbox"/> Other ()	<input checked="" type="checkbox"/> Action required <input type="checkbox"/> Service manual revision <input type="checkbox"/> Retrofit information <input type="checkbox"/> Tier2

Latest firmware version list

Software	File Name	Version
SD Scanner (Scanner)	B8405560	Ver.b3_2.19 or later
SD Printer (Printer)	B8405523A	Ver.5.21 or later
Network DocBox (NetFile) NFA	B8405580	Ver.1.00 or later
Web Support (WebSys)	B8405570A	Ver.1.22 or later
WebUapl (WebUapl)	B8405590	Ver.2.02 or later
System/Copy (System)	D1015541B	Ver.6.01 or later
Network Support (NCS)	D1015542A	Ver5.73.1 or later
Animation	D1015544	Ver.1.06 or later
Engine (Engine)	D1015223A	Ver.5.20:20 or later
Language Install (Language)	B2345329D	Ver.2.01 or later
OpePanel.EXP(LCDC)[NA]	B2345321C	Ver.2.01 or later
OpePanel.EXP(LCDC)[EU]	B2345322C	Ver.2.01 or later

NOTE

- When Plockmatic is installed on the Katana-C1.5, please ensure that the System and Engine firmware are the following versions or later.

If the versions are not as indicated, the Ring Binder or Perfect Binder will not operate properly.

- 1) System/Copy (System) D1015541B Ver.6.01
- 2) Engine D1015223A Ver.5.20:20

- When the IPDS Option is used in the Katana-C1.5, please ensure that the Network Support firmware is the following version or later.

Network Support (NCS) D1015542A Ver.5.73.1

Model: Bellini-C3.5 (Katana-C1.5 Type-A/B/C)		Date: 5-Aug-08	No.: RD101023
Subject: S/M correction		Prepared by: T.Tadokoro	
From: PPBG QA/Service Planning Dept.			
Classification:	<input type="checkbox"/> Troubleshooting <input type="checkbox"/> Part information <input type="checkbox"/> Action required <input type="checkbox"/> Mechanical <input type="checkbox"/> Electrical <input checked="" type="checkbox"/> Service manual revision <input type="checkbox"/> Paper path <input type="checkbox"/> Transmit/receive <input type="checkbox"/> Retrofit information <input type="checkbox"/> Product Safety <input type="checkbox"/> Other ()		

The Service Manual was changed as follows.

- **Replaced** the following description.
(pg. 2-15)

Old

Main Grip Unit

Part	Interval	Predicted	Replace	Comments
Signature Thickness Sensor	PM		50 K signatures	Signature thickness sensor error. Use the Service Board DIP switches to adjust the signature thickness for 25 mm.

New

Main Grip Unit

Part	Interval	Predicted	Replace	Comments
Signature Thickness Sensor	EM		50 K signatures	Signature thickness sensor error. Use the Service Board DIP switches to adjust the signature thickness for 25 mm.

- **Replaced** the following descriptions.
(pg. 2-16)

Old

Gluing Unit

Part	PM	Comments
Glue Vat Unit Heater TBD	2,000 hours	Heater error, warm-up time not within specification

New

Gluing Unit

Part	PM	Comments
Glue Vat Unit	2,000 hours	Heater error, warm-up time not within specification

Model: Bellini-C3.5 (Katana-C1.5 Type-A/B/C)

Date: 5-Aug-08

No.: RD101023

Old

Signature Rotation Unit

Part	Interval	Predicted	Replace	
Torque Diode (Signature Rotation Unit for Trimming)	PM		50 K signatures	Inaccurate cutting

New

Signature Rotation Unit

Part	Interval	Predicted	Replace	
Torque Diode (Signature Rotation Unit for Trimming)	EM		50 K signatures	Inaccurate cutting

Old

Trimming Unit

Part	Interval	Comments
Blade	PM	5.5 K cuts Set the machine in Replacement Mode for replacement. Note: Blade and cradle are always replaced together.
Blade Cradle	PM	
Trimming Buffer Motor	PM	50 K signatures

New

Trimming Unit

Part	Interval	Comments
Blade	PM	40 K cuts Set the machine in Replacement Mode for replacement. Note: Blade and cradle are always replaced together.
Blade Cradle	PM	
Trimming Buffer Motor	EM	50 K signatures

Model: B-C3.5 (Katana-C1.5 Type-A/B/C)	Date: 10-Oct-08	No.: RD101024
---	-----------------	---------------

Subject: Firmware Release Note: System (for FRANCE)		Prepared by: T.Tadokoro	
From: PPBG QA/Service Planning Dept.			
Classification:	<input type="checkbox"/> Troubleshooting	<input type="checkbox"/> Part information	<input type="checkbox"/> Action required
	<input type="checkbox"/> Mechanical	<input type="checkbox"/> Electrical	<input type="checkbox"/> Service manual revision
	<input type="checkbox"/> Paper path	<input type="checkbox"/> Transmit/receive	<input type="checkbox"/> Retrofit information
	<input checked="" type="checkbox"/> Other ()		

System (for FRANCE)

Version	Program No.	Effective Date
6.00FRN	D1015547	July 2008 production

System (for FRANCE)

Version	Symptom Corrected
6.00FRN	Latest Firmware Version

Model: Bellini-C3 Bellini-C3.5		Date: 19-Jan-09	No.: RD101025
Subject: Motor lock of the Exit Unit		Prepared by: K. Tsutsui	
From: PPBG QA/Service Planning Dept.			
Classification:	<input type="checkbox"/> Troubleshooting <input type="checkbox"/> Mechanical <input type="checkbox"/> Paper path <input type="checkbox"/> Product Safety	<input type="checkbox"/> Part information <input type="checkbox"/> Electrical <input type="checkbox"/> Transmit/receive <input type="checkbox"/> Other ()	<input checked="" type="checkbox"/> Action required <input type="checkbox"/> Service manual revision <input type="checkbox"/> Retrofit information <input type="checkbox"/> Tier 2

Action Required

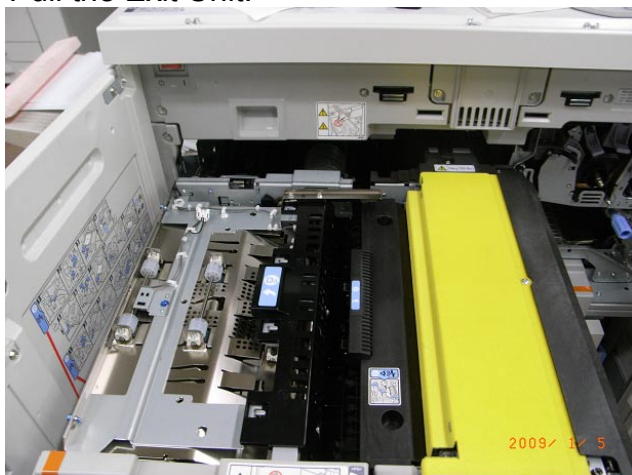
Please move Gate Pawl (B2344455) manually when the mainframe is installed. This action confirms that the motor rotates properly and will release a (possibly) locked motor.

Reason

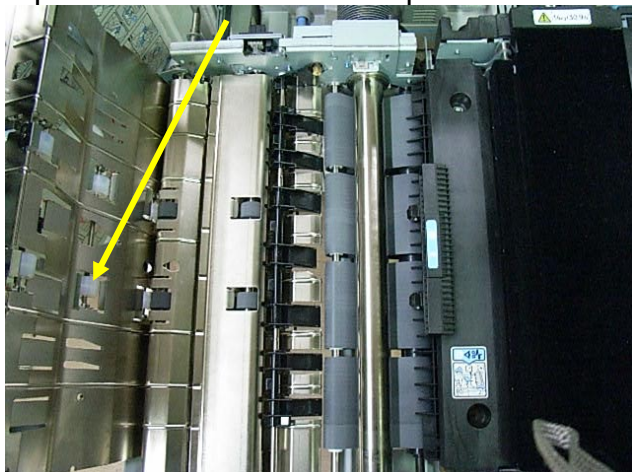
The stepper motor (B2344497) may not rotate because of vaporized glue dried on the motor shaft. (Motor locked).

Method

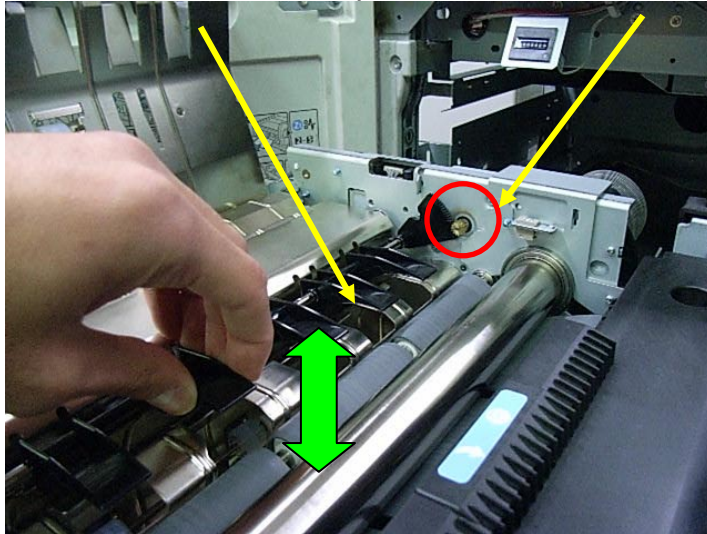
1. Pull the Exit Unit.



2. Open the Exit Guide Plate upward.



3. Move the Gate Pawl upward and downward, then rotate the gear of the stepper motor.



Model: Bellini-C3 Bellini-C3.5

Date: 19-Jan-09

No.: RD101025

Affected S/N (Possible occurrence ratio: 0.4%)

		numbers	START	END
B23627	Bellini-C3cEURIC	2	2	L5780500001 L5780500002
D10117	Bellini-C3. 5a__NA__GER	1221	84	V0880500029 V0880500112
			157	V0880500148 V0880500304
			67	V0880600001 V0880600067
			31	V0880600113 V0880600143
			20	V0880600162 V0880600181
			50	V0880600198 V0880600247
			97	V0880600283 V0880600379
			99	V0880700001 V0880700099
			105	V0880700130 V0880700234
			129	V0880700295 V0880700423
			76	V0880700429 V0880700504
			38	V0880800001 V0880800038
			76	V0880800069 V0880800144
			42	V0880800153 V0880800194
			128	V0880800215 V0880800342
			22	V0880900001 V0880900022
D10126	Bellini-C3. 5a__EU__INF	148	35	V0880500113 V0880500147
			45	V0880600068 V0880600112
			30	V0880700100 V0880700129
			30	V0880700235 V0880700264
			8	V0880800145 V0880800152
D10127	Bellini-C3. 5a__EU__GER	179	18	V0880600144 V0880600161
			16	V0880600182 V0880600197
			35	V0880600248 V0880600282
			30	V0880700265 V0880700294
			5	V0880700424 V0880700428
			30	V0880800039 V0880800068
			20	V0880800195 V0880800214
			25	V0880800343 V0880800367
D10217	Bellini-C3. 5b__NA__GER	308	41	V0980500001 V0980500041
			42	V0980500060 V0980500101
			15	V0980600001 V0980600015
			30	V0980600080 V0980600109
			35	V0980700001 V0980700035
			30	V0980700056 V0980700085
			58	V0980700101 V0980700158
			33	V0980800001 V0980800033
			5	V0980800049 V0980800053
			10	V0980800059 V0980800068
			8	V0980800084 V0980800091
			1	V0980900016
D10226	Bellini-C3. 5b__EU__INF	83	18	V0980500042 V0980500059
			25	V0980600016 V0980600040
			20	V0980700036 V0980700055
			15	V0980700086 V0980700100
			5	V0980800054 V0980800058
D10227	Bellini-C3. 5b__EU__GER	136	39	V0980600041 V0980600079
			8	V0980600110 V0980600117
			6	V0980700159 V0980700164
			15	V0980800034 V0980800048
			15	V0980800069 V0980800083
			38	V0980800092 V0980800129
			15	V0980900001 V0980900015
D10317	Bellini-C3. 5c__NA__GER	193	24	V1080500001 V1080500024
			27	V1080500030 V1080500056
			4	V1080600001 V1080600004
			4	V1080600020 V1080600023
			4	V1080600049 V1080600052
			18	V1080600061 V1080600078
			23	V1080700001 V1080700023
			33	V1080700034 V1080700066
			18	V1080700077 V1080700094
			12	V1080800001 V1080800012
			8	V1080800018 V1080800025
			8	V1080800039 V1080800046
			10	V1080900001 V1080900010
D10326	Bellini-C3. 5c__EU__INF	40	5	V1080500025 V1080500029
			15	V1080600005 V1080600019
			10	V1080700024 V1080700033
			10	V1080700067 V1080700076
D10327	Bellini-C3. 5c__EU__GER	59	25	V1080600024 V1080600048
			8	V1080600053 V1080600060
			5	V1080800013 V1080800017
			13	V1080800026 V1080800038
			8	V1080900011 V1080900018

Model: Bellini-C3.5 (Katana-C1.5 Type-A/B/C)		Date: 24-Apr-09	No.: RD101026
Subject: Printer Bit Switch		Prepared by: T.Tadokoro	
From: PPBG QA/Service Planning Dept.			
Classification:	<input type="checkbox"/> Troubleshooting <input type="checkbox"/> Part information <input type="checkbox"/> Action required <input type="checkbox"/> Mechanical <input type="checkbox"/> Electrical <input checked="" type="checkbox"/> Service manual revision <input type="checkbox"/> Paper path <input type="checkbox"/> Transmit/receive <input type="checkbox"/> Retrofit information <input type="checkbox"/> Product Safety <input type="checkbox"/> Other ()		


The Service Manual was changed as follows.

- **Replaced** the following description.
(Pg. 5-146)

SP1-XXX (Service Mode)

1001	Bit Switch		
001	Bit Switch 1		0 1
	bit 0	DFU	- -
	bit 1	DFU	- -
	bit 2	DFU	- -
	bit 3	No I/O Timeout	0: Disable 1: Enable
	Enable: The MFP I/O Timeout setting will have no effect. I/O Timeouts will never occur.		
	bit 4	SD Card Save Mode	0: Disable 1: Enable
	Enable: Print jobs will be saved to an SD Card in the GW SD slot (☛ "Card Save Function" in "System Maintenance Reference" section of the Field Service Manual).		
	bit 5	DFU	- -
	bit 6	DFU	- -
1001	bit 7	[RPCS,PCL]: Printable area frame border	0: Disable 1: Enable
	Enable: The machine prints all RPCS and PCL jobs with a border on the edges of the printable area.		
1001	Bit Switch		

Model: Bellini-C3.5 (Katana-C1.5 Type-A/B/C)	Date: 24-Apr-09	No.: RD101026
--	-----------------	---------------

002	Bit Switch 2		0	1
	bit 0	DFU	-	-
	bit 1	DFU	-	-
	bit 2	Applying a collation Type	Shift Collate	Normal Collate
	<p>A collation type (shift or normal) will be applied to all jobs that do not already have a 'Collate Type' configured.</p> <p> Note</p> <ul style="list-style-type: none"> If #5-0 is enabled, this Bit Switch has no effect. 			
	bit 3	[PCL5e/c,PS]: PDL Auto Switching	0: Enable	1: Disable
	<p>Disable: The MFPs ability to change the PDL processor mid-job. Some host systems submit jobs that contain both PS and PCL5e/c. If Auto PDL switching is disabled, these jobs will not be printed properly.</p>			
	bit 4	DFU	-	-
	bit 5	DFU	-	-
	bit 6	DFU	-	-
	bit 7	DFU	-	-

1001	Bit Switch			
003	Bit Switch 3		0	1
	bit 0	DFU	-	-
	bit 1	DFU	-	-
	bit 2	[PCL5e/c]: Legacy HP compatibility	0: Disable	1: Enable
	<p>Enable: Uses the same left margin as older HP models such as HP4000/HP8000. In other words, the left margin defined in the job (usually "<ESC>*r0A") will be changed to "<ESC>*r1A"</p>			
	bit 3	DFU	-	-
	bit 4	DFU	-	-
	bit 5	DFU	-	-
	bit 6	DFU	-	-
	bit 7	DFU	-	-

1001	Bit Switch			
004	Bit Switch 4 DFU		-	-

Model: Bellini-C3.5 (Katana-C1.5 Type-A/B/C)

Date: 24-Apr-09

No.: RD101026



1001	Bit Switch			
005	Bit Switch 5		0	1
		Show "Collate Type", "Staple Type" and "Punch Type" buttons on the operation panel.	Disable	Enable
	bit 0	If enabled, users will be able to configure a Collate Type, Staple Type, and Punch Type from the operation panel. The available types will depend on the device and configured options. After enabling the function, the settings will appear under: "User Tools > Printer Features > System"		
	bit 1	DFU	-	-
	bit 2	DFU	-	-
	bit 3	[PS] PS Criteria	Pattern3	Pattern1
		Change the number of PS criterion used by the PS interpreter to determine whether a job is PS data or not. Pattern3: includes most PS commands. Pattern1: A small number of PS tags and headers		
	bit 4	Increase max number of the stored jobs to 1000 jobs.	Disable (100)	Enable (1000)
		Enable: Changes the maximum number of jobs that can be stored on the HDD via Job Type settings to 1000. The default is 100.		
	bit 5	DFU	-	-
	bit 6	DFU	-	-
	bit 7	DFU	-	-

1001	Bit Switch			
006	Bit Switch 6 DFU		-	-

1001	Bit Switch			
007	Bit Switch 7 DFU		-	-

1001	Bit Switch			
008	Bit Switch 8		0	1
	bit 0	DFU	-	-
	bit 1	DFU	-	-

Model: Bellini-C3.5 (Katana-C1.5 Type-A/B/C)	Date: 24-Apr-09	No.: RD101026
--	-----------------	---------------

bit 2	DFU	-	-
bit 3	[PCL,PS]: Allow BW jobs to print without requiring User Code	Disable	Enable
	Enable: BW jobs submitted without a user code will be printed even if usercode authentication is enabled.  Note ■ Color jobs will not be printed without a valid user code.		
bit 4	DFU	-	-
bit 5	DFU	-	-
bit 6	[PS]: Orientation Auto Detect Fuction	Disable	Enable
	Automatically chooses page orientations of PostScript jobs (Landscape or Portrait) based on the content.  Note Applied to PS firmware ver 1.01		
bit 7	DFU	-	-

Reissued:26-Aug-09

Model: Bellini-C3.5 (Katana-C1.5 Type-A/B/C)	Date: 15-May-09	No.: RD101027a
--	-----------------	----------------

RTB Reissue

The items in **bold** were corrected or added.

Subject: Firmware version for IPDS Unit Type 1350.		Prepared by: T.Satoh	
From: PPBG QA/Service Planning Dept.			
Classification:	<input type="checkbox"/> Troubleshooting <input type="checkbox"/> Mechanical <input type="checkbox"/> Paper path <input type="checkbox"/> Product Safety	<input type="checkbox"/> Part information <input type="checkbox"/> Electrical <input type="checkbox"/> Transmit/receive <input checked="" type="checkbox"/> Other ()	<input checked="" type="checkbox"/> Action required <input type="checkbox"/> Service manual revision <input type="checkbox"/> Retrofit information <input type="checkbox"/> Tier2

This RTB has been issued to announce the firmware information for the IPDS Unit Type 1350.

When the IPDS Unit Type 1350 (following lot No.) is used in Katana-C1.5, please update the firmware (following version or later).

Version: Ver.4.555
Program Part No: D3826101

Reissued:16-Jun-09

Model: Katana-C1.5 (Bellini-C3.5)	Date: 2-Jun-09	No.: RD101028a
-----------------------------------	----------------	----------------

RTB Reissue

The items in ***bold italics*** were corrected or added.

Subject: Enabling the PU5000 Punch Unit when installed in the SR5000 Finisher		Prepared by: K. Tsutsui	
From: PPMC Service Planning Department 1G			
Classification:	<input type="checkbox"/> Troubleshooting <input type="checkbox"/> Mechanical <input type="checkbox"/> Paper path <input type="checkbox"/> Product Safety	<input type="checkbox"/> Part information <input type="checkbox"/> Electrical <input type="checkbox"/> Transmit/receive <input checked="" type="checkbox"/> Other ()	<input type="checkbox"/> Action required <input type="checkbox"/> Service manual revision <input type="checkbox"/> Retrofit information <input type="checkbox"/> Tier2

Although the subject mentioned in this RTB may be well known already, it has been issued to ensure thorough notification.

Please set the SP values as shown below to enable the PU5000 Punch Unit when it is installed in the SR5000 finisher with the Pro1356EX mainframe:

SP6980-0001: **"1: ON"**

Next, set User Tools as follows:

System Settings - General Features - Optimum for Thick paper: ON

NOTE

This procedure is not required when the PU5000 Punch Unit is installed into the SR5000 finisher when used with the Pro906EX and Pro1106EX mainframes.

Model: Katana-C1.5(Bellini-C3.5)

Date:15-Sep-09

No.: RD101029

Subject: Parts Catalog Correction

Prepared by: T.Tadokoro

From: PPMC Service Planning Department 1G

Classification:

☐ Troubleshooting

☒ Part information

☐ Action required

☐ Mechanical

☐ Electrical

☐ Service manual revision

☐ Paper path

☐ Transmit/receive

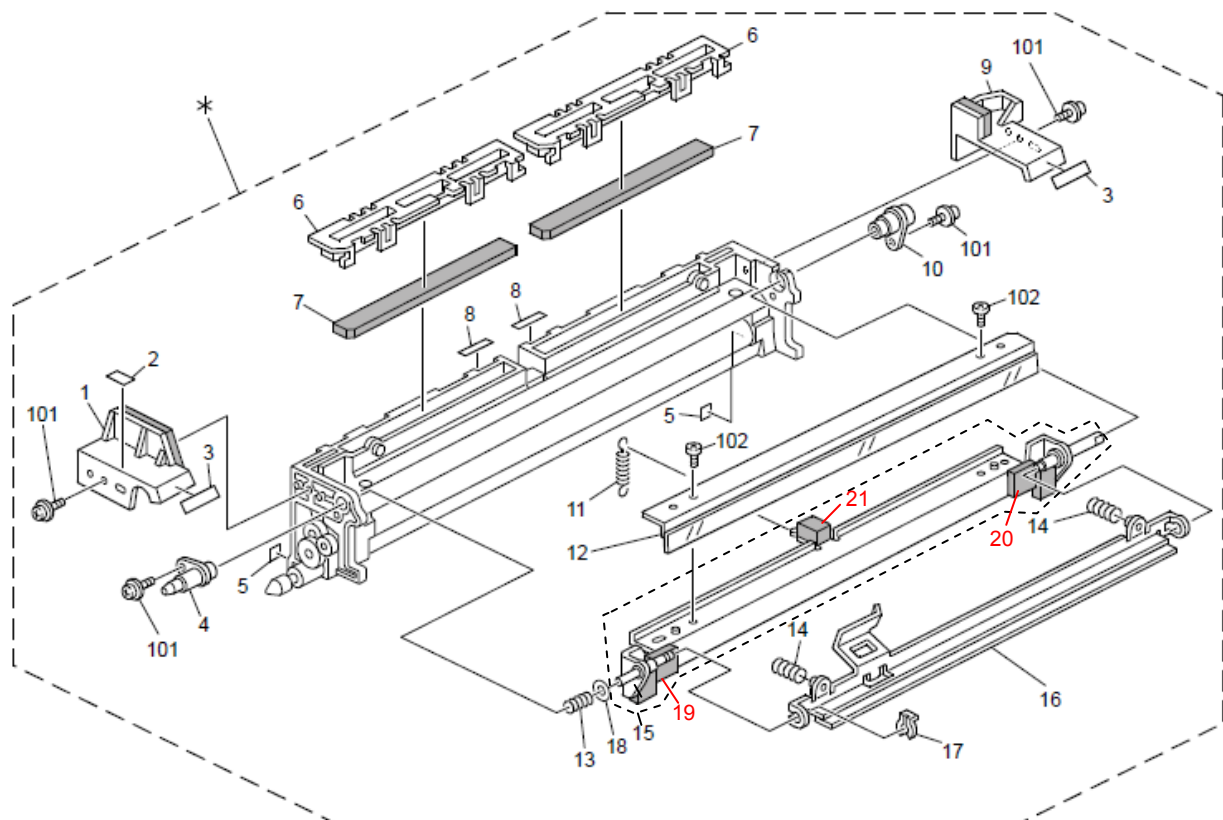
☐ Retrofit information

☐ Other ()

42.Cleaning Unit 1 (B234/B235/B236/D101/D102/D103)

New part number	Description	Q'ty	Int	Page	Index	Note
B2343572	SEAL:BLADE:FRONT:ASS'Y	1	-	98	19	Add
B2343575	SEAL:BLADE:INNER BACK:ASS'Y	1	-	98	20	Add
B2343578	SEAL:BRACKET:BLADE	1	-	98	21	Add

Reason : Due to request from the field.



Model: Bellini-C3.5 (Katana-C1.5), Bellini-C4 (Katana-C2), Bellini-P1		Date: 16-Sep-09	No.: RD101030
Subject: SC494/495 Prevention at Installation		Prepared by: M. Abe	
From: PPMC Service Planning Department 1G			
Classification:	<input checked="" type="checkbox"/> Troubleshooting <input type="checkbox"/> Mechanical <input type="checkbox"/> Paper path <input type="checkbox"/> Product Safety	<input type="checkbox"/> Part information <input type="checkbox"/> Electrical <input type="checkbox"/> Transmit/receive <input type="checkbox"/> Other ()	<input type="checkbox"/> Action required <input type="checkbox"/> Service manual revision <input type="checkbox"/> Retrofit information <input type="checkbox"/> Tier2

SYMPTOM

SC494/495 could occur during the initial installation of the machine, which results in discontinuance of the entire installation procedure.

CAUSE

Unknown.

TEMPORARY SOLUTION

Please refer to "Installation > Main Machine > Installation > Initializing the Machine" in the service manual and do the following procedures.

1. Turn the main power OFF, then ON.
2. Redo SP2-207-002 "Toner Bank Toner Setup". (Step 11 of "Initializing the Machine")
(This process will take approx 5-6 minutes)
3. Then continue on with Steps 12-14 described in the manual.

(Excerpt from manual; step 12-14)

12. Do SP2962 and touch [EXECUTE]. This executes auto process control.
13. Do SP6008-003 and execute a free run for at least 3 minutes. Be sure to touch [OFF] before you exit the SP mode.
14. Clean the transport belt above the exposure glass.

NOTE

Although at a very low rate, SC494/495 could also occur after completing the installation, a condition in which the machine is still stable, for instance when the initial SMC is output. In such a case, please do the same procedure as shown above to solve the problem.

Reissued:18-Oct-10

Model: Katana-C1/1.5	Date: 15-Oct-10	No.: RD101031a
----------------------	-----------------	----------------

RTB Reissue

The items in ***bold italics*** have been added.

Subject: Parts Catalog Correction		Prepared by: T. Komori	
From: PP Service Planning Department 1G			
Classification:	<input type="checkbox"/> Troubleshooting	<input checked="" type="checkbox"/> Part information	<input type="checkbox"/> Action required
	<input type="checkbox"/> Mechanical	<input type="checkbox"/> Electrical	<input type="checkbox"/> Service manual revision
	<input type="checkbox"/> Paper path	<input type="checkbox"/> Transmit/receive	<input type="checkbox"/> Retrofit information
	<input type="checkbox"/> Product Safety	<input type="checkbox"/> Other ()	<input type="checkbox"/> Tier 2

Change/Reason: ***Change in vendor***
~~Parts catalog correction~~

Old Part Number	New Part Number	Description	Q'ty	I/C		Page	Index
B2346880	B2346881	HDD UNIT:SUB-ASS'Y	1	X/X	O/O	163	1
B2345585	G1786042	CABLE:HDD:SATA:POWER:AEGIS	1	X/X	as a set	163	33

IMPORTANT

Procure the cable (G1786042) with the New HDD unit (B2346881) as a set.

Model: Katana-C1/C1.5		Date: 15-Dec-10	No.: RD101032
Subject: Part Changes – Duplex Unit		Prepared by: T. Komori	
From: PP Service Planning Department 1G			
Classification:	<input type="checkbox"/> Troubleshooting <input checked="" type="checkbox"/> Part information <input type="checkbox"/> Action required <input type="checkbox"/> Mechanical <input type="checkbox"/> Electrical <input type="checkbox"/> Service manual revision <input type="checkbox"/> Paper path <input type="checkbox"/> Transmit/receive <input type="checkbox"/> Retrofit information <input type="checkbox"/> Product Safety <input type="checkbox"/> Other () <input type="checkbox"/> Tier 2		

Change: Shape of the part

Reason: Higher reliability; to prevent breakage of the gear in the duplex unit

Model: Katana-C1/C1.5 (B234/B235/B236/D101/D102/D103)

Old Part Number	New Part Number	Description	Q'ty	Int	Page	Index	Note
B2344502	B2344510	DUPLEX UNIT:ASS'Y	1	X/O	121	*	
B2344631	D0594632	BRACKET:SUPPORT:POSITIONING PIN:MAIN	1	X/X	129	14	

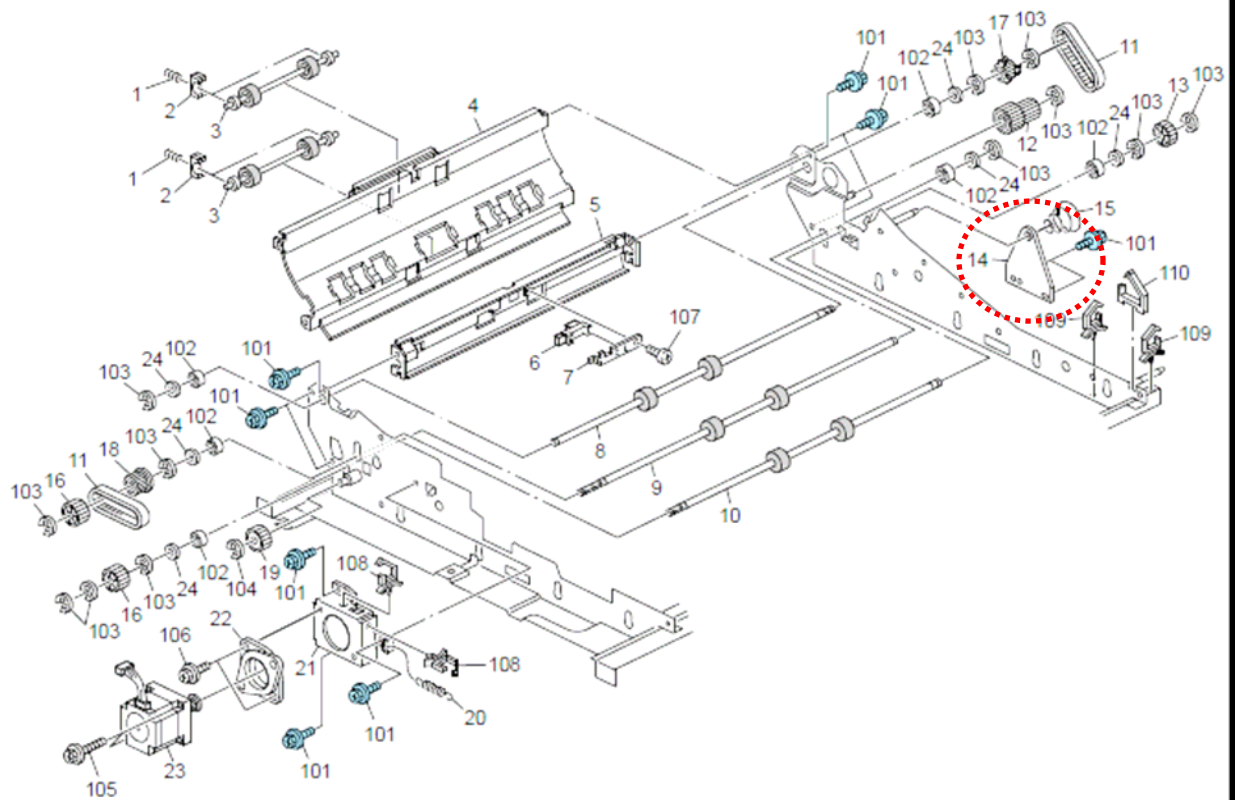
The support bracket has been modified ([B2344631](#) → [D0594632](#)) to prevent the possible breakage of the gear, which has also been modified for higher durability (B2344649 → D0594649).

The duplex unit also has a new p/n because of this modification.

NOTE

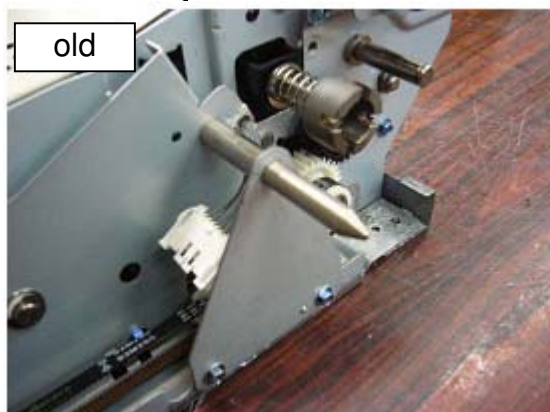
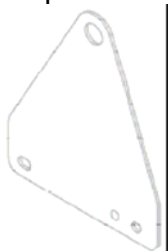
- This modification also applies to Katana-C2, P1. Please refer to the corresponding RTB.
- Replace the gear (B2344649) with the modified gear (D0594649) if it breaks. If the breakage were to recur, please replace the duplex unit with the modified duplex unit installed with the NEW support bracket.
- The NEW support bracket (D0594632) cannot be installed on the old duplex unit (X/X).

57.Duplex Unit 5 (B234/B235/B236/D101/D102/D103)

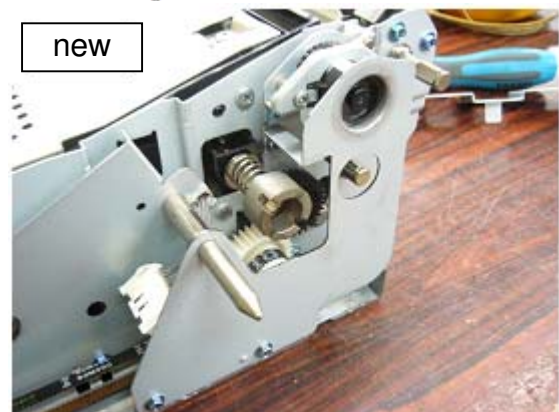
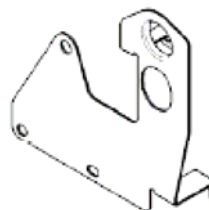


Support Bracket:

Old p/n: B2344631



New p/n: D0594632



Model: Katana-C1/C1.5 (Bellini-C3/C3.5)		Date: 08-Apr-11	No.: RD101033
Subject: Engine Log Capture Tool / Procedures		Prepared by: J. Ohno	
From: PP Service Planning Department 1G			
Classification:	<input type="checkbox"/> Troubleshooting <input type="checkbox"/> Mechanical <input type="checkbox"/> Paper path <input type="checkbox"/> Product Safety	<input type="checkbox"/> Part information <input type="checkbox"/> Electrical <input type="checkbox"/> Transmit/receive <input checked="" type="checkbox"/> Other ()	<input type="checkbox"/> Action required <input type="checkbox"/> Service manual revision <input type="checkbox"/> Retrofit information <input type="checkbox"/> Tier 2

Summary

Detailed information on the machine status was not available for engine related issues. A debug cable for log capturing will be distributed to the field to enable collection of such data for log analysis.

Part information

The debug cable is common with the Aegis-P1/C1.

Description: Debug cable

p/n: G1785397



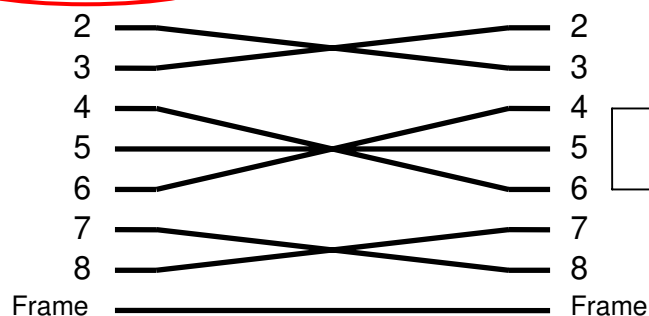
G1785397 Debug cable

Required Equipment

- Serial Cross Cable (D-sub 9pin)
- Serial RS232C to USB Converter

Choose the correct connector type for the PC.

DB9 male / female



Debug Cable
G1785397



Serial Cross cable (D-sub 9pin)



Serial RS232C to USB Converter

Model: Katana-C1/C1.5 (Bellini-C3/C3.5)

Date: 08-Apr-11

No.: RD101033

NOTE: A USB converter is not required if the PC is equipped with a serial port.

Basic Idea of Log Capturing

The Katana engine runs on one CPU.

(Therefore unlike the Aegis, log capturing from both Master and Slave is not required.)

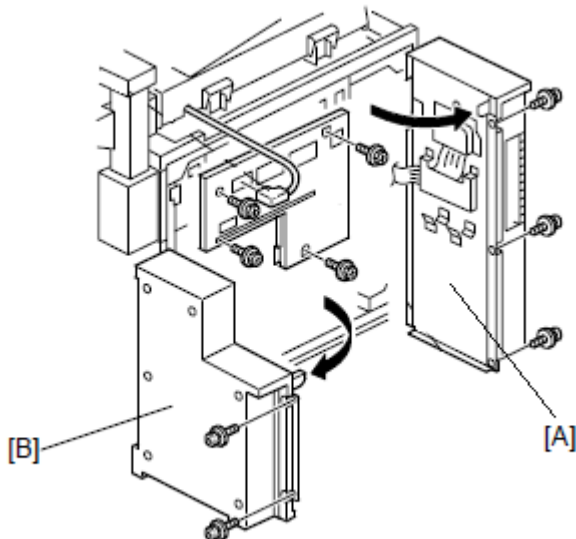
IMPORTANT: Entire logs from the beginning of the job until the symptom occurrence are required for log analysis.

Overall Workflow

1. Connect the Debug cable.
2. Set up Tera Term and start the log capturing. (Tera Term is free software.)
3. Start the job.
4. Wait until the expected symptom occurs.
5. Stop the log capturing process.
6. Disconnect the cable.

Connecting the Debug cable

1. Open the controller box [A] (x 3)
2. Open the PSU box [B] (x 2)



Model: Katana-C1/C1.5 (Bellini-C3/C3.5)	Date: 08-Apr-11	No.: RD101033
---	-----------------	---------------

3. Connect the debug cable to the PCB board.



4. Connect the other end of the debug cable to the serial port or to the USB port on the PC using a USB-serial conversion cable.

Setting up Tera Term (Log Monitor)

1. Activate Tera Term.
2. Open "Terminal setup" by selecting [Setup] > [Terminal], and specify the settings as shown below.

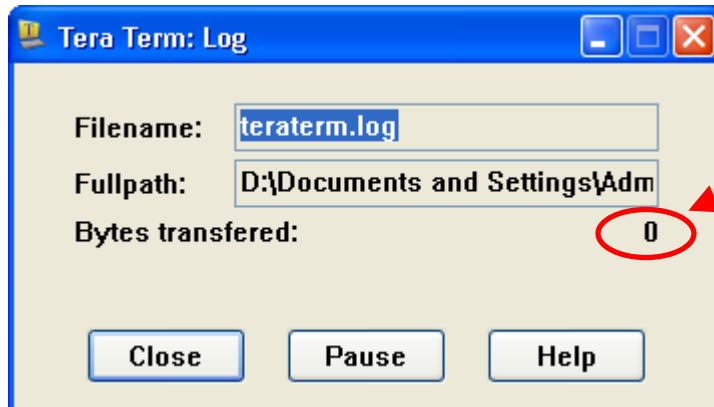
Terminal Size : under (80 x25)
 New Line : Transmit CR+LF
 Local echo : Check box on
 Kanji(receive) : SJIS
 Kanji(trasmit) : SJIS

3. Open "Serial port setup" by selecting [setup] > [Serial port], and specify the settings as shown below.

Port : COMx
 (x : check COM# with Device Manger of PC)
 Baud rate : 57600
 Data : 8bit
 Stop : 1 bit
 Parity : none
 Flow control : none
 Transmit delay : 10 msec/char

Capturing the Logs

1. Select [File] > select [Log], type in the file name, and click [Open].
A pop-up window will appear.
Save the file name as "xxx.txt" or "xxx.log".
2. Start the job.



Ensure that bytes are counted up during the log capturing process.

3. Wait until the expected symptom occurs.
4. If the expected symptom occurs, type "log" in the Debug monitor and press the "Enter" key. This will enable capturing of further detailed information on the symptom. (This is not a mandatory procedure.)
5. Click [Close] in the "Tera Term Log" window.

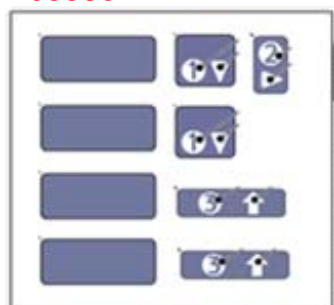
Model: Katana-C2 (D059/D060/D061)		Date: 22-Apr-11	No.: RD059088
Subject: Part Changes – Combined decals		Prepared by: T. Komori	
From: PP Service Planning Department 1G			
Classification:	<input type="checkbox"/> Troubleshooting <input checked="" type="checkbox"/> Part information <input type="checkbox"/> Action required <input type="checkbox"/> Mechanical <input type="checkbox"/> Electrical <input type="checkbox"/> Service manual revision <input type="checkbox"/> Paper path <input type="checkbox"/> Transmit/receive <input type="checkbox"/> Retrofit information <input type="checkbox"/> Product Safety <input type="checkbox"/> Other () <input type="checkbox"/> Tier 2		

Change/Reason: We have combined four decals into one.

Model: Katana-C2 (D059/D060/D061)

Old Part Number	New Part Number	Description	Q'ty	Int	Page	Index	Note
B2343592	-	DECAL:POSITIONING DISPLAY:1	1	O/O	107	6	
			1	O/O	243	52	
B2343644	-	DECAL:CASE:MIDDLE:CLEANIN G	1	O/O	107	5	
			1	O/O	243	54	
B2343654	-	DECAL:POSITIONING DISPLAY:2	1	O/O	107	3	
			1	O/O	243	55	
B2343655	-	DECAL:POSITIONING DISPLAY:3	1	O/O	107	4	
			1	O/O	243	56	
	D0593644	DECAL:POSITIONING DISPLAY:CLEANING	1		107	19	Add

D0593644



NOTE

This modification has also applied to Katana-C1/C1.5 (B234/B235/B236/D101/D102/D103). Whichever the machine is, please order D0593644 when needing these decals.

Model: Katana-C1.5 (D101/D102/D103)		Date: 12-Aug-11	No.: RD101034
Subject: Part Changes – Paper Feed Unit		Prepared by: J. Ohno	
From: PP Service Planning Department 1G			
Classification:	<input type="checkbox"/> Troubleshooting <input type="checkbox"/> Mechanical <input type="checkbox"/> Paper path <input type="checkbox"/> Product Safety	<input checked="" type="checkbox"/> Part information <input type="checkbox"/> Electrical <input type="checkbox"/> Transmit/receive <input type="checkbox"/> Other ()	<input type="checkbox"/> Action required <input type="checkbox"/> Service manual revision <input type="checkbox"/> Retrofit information <input type="checkbox"/> Tier 2

Change: Shape and position of components in the paper feed unit

Reason: Higher reliability; to prevent mis-feed jams in the paper feed unit

Model: Katana-C1.5 (D101/D102/D103)

Old Part Number	New Part Number	Description	Q'ty	Int	Page	Index	Note
B2346200	B2346201	PAPER FEED UNIT	3	X/O	63	*	
B2346212	D0596212	Reverse Lever	1	X/O	67	11	

Insufficient pressure between the Feed and Reverse rollers could result in mis-feed jams. The shape of the component in the paper feed unit and the reverse lever have been modified, and the Reverse roller has been raised to a slightly higher position to maintain the optimum pressure between the two rollers.

NOTE

- This modification also applies to Katana-C2, P1. RTBs have been issued for all models respectively.

Model: Katana-C1.5 (D101/D102/D103)

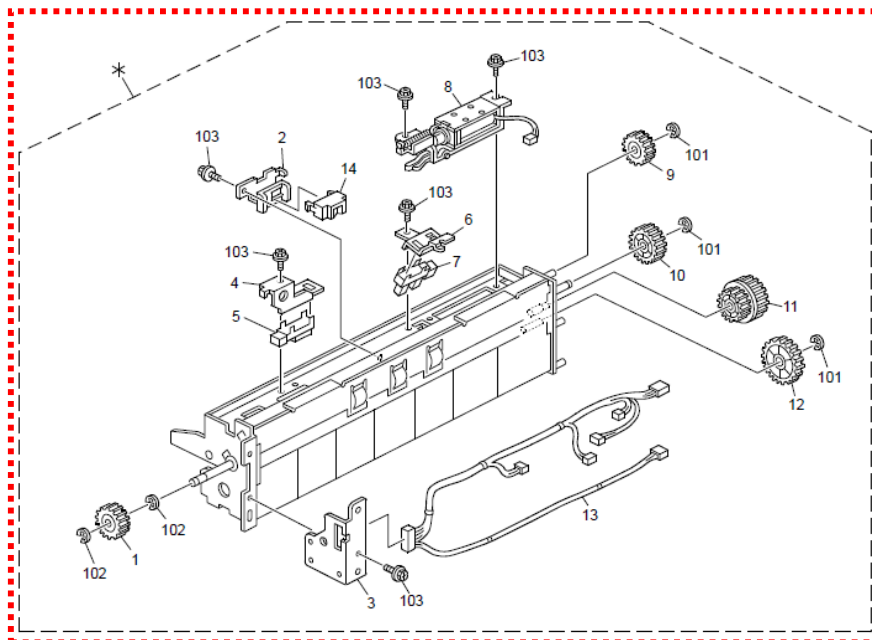
Date: 12-Aug-11

No.: RD101034

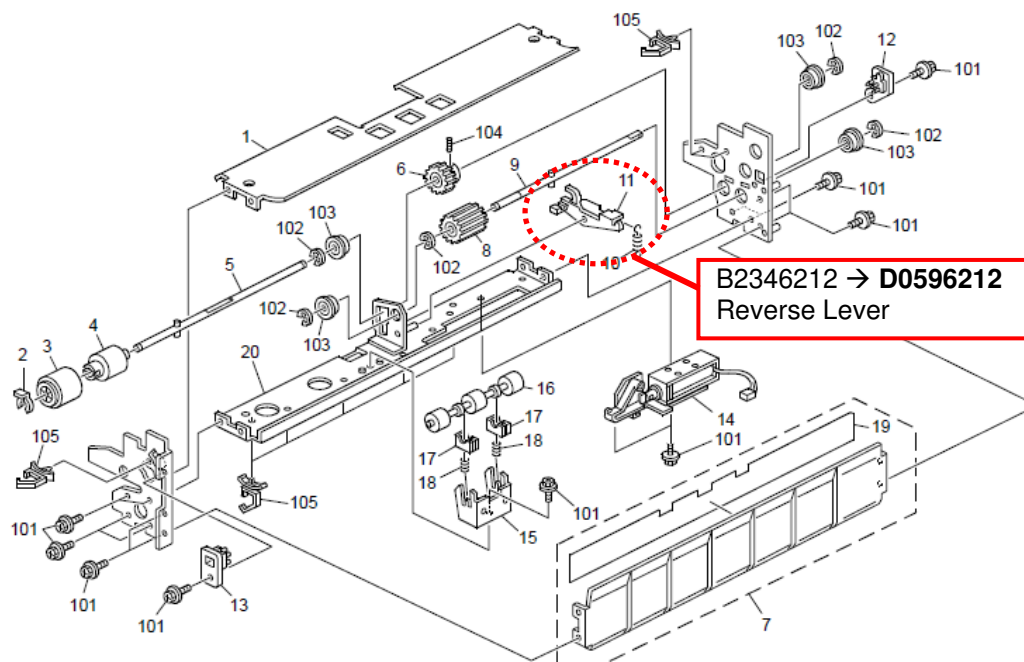
B2346200 → **B2346201**

PAPER FEED UNIT:PAPER BANK:ASS'Y

24.Paper Feed Unit 1 (B234/B235/B236/D101/D102/D103)



26.Paper Feed Unit 3 (B234/B235/B236/D101/D102/D103)

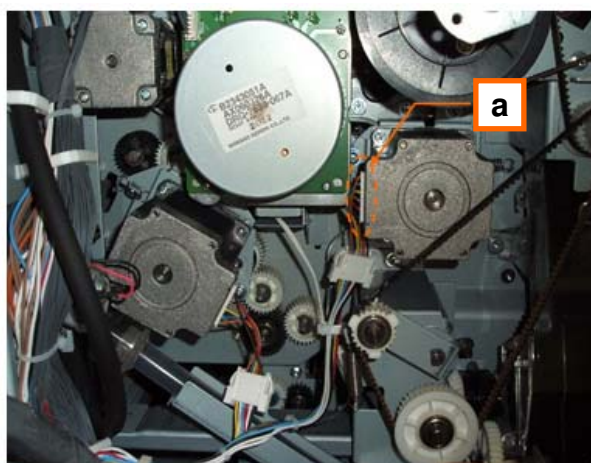


Model: Katana-P1(M002)		Date: 16-Dec-11	No.: RM002021
Subject: Part Changes		Prepared by: A. Takada	
From: PP Tech Service Dept., 1st PP Tech Service Sect.			
Classification:	<input type="checkbox"/> Troubleshooting <input type="checkbox"/> Mechanical <input type="checkbox"/> Paper path <input type="checkbox"/> Product Safety	<input checked="" type="checkbox"/> Part information <input type="checkbox"/> Electrical <input type="checkbox"/> Transmit/receive <input type="checkbox"/> Other ()	<input type="checkbox"/> Action required <input type="checkbox"/> Service manual revision <input type="checkbox"/> Retrofit information <input type="checkbox"/> Tier 2

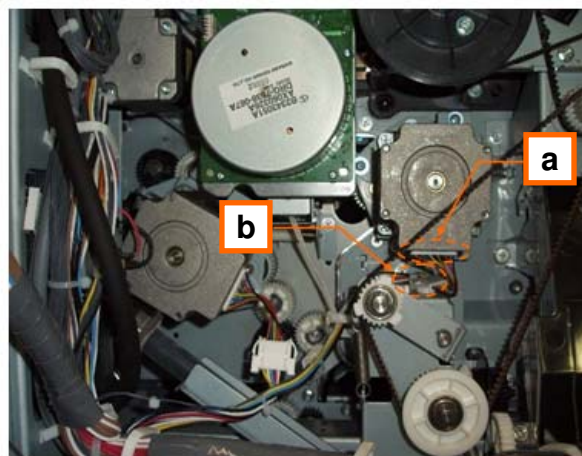
Change: a) Orientation of the DC Stepper Motor; 90 degrees counterclockwise
 b) Addition of a clamp (in accordance with the change in the motor orientation)

Reason: To prevent possible damage to the registration motor harnesses

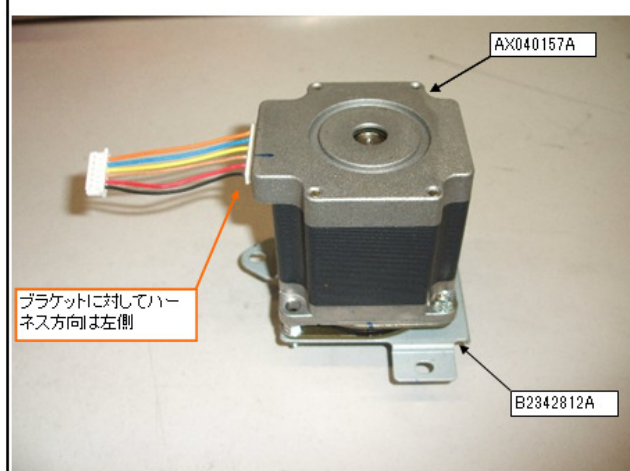
Old



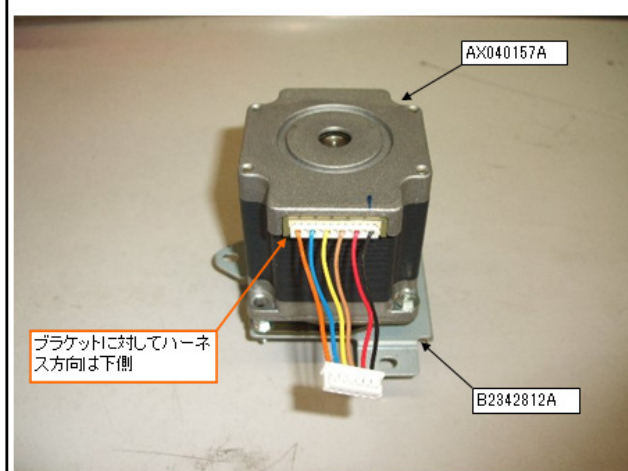
New



B2342811(DC Stopper Motor:Registration:Ass'y)



D0592840(DC Stopper Motor:Registration:Ass'y)



Model: Katana-P1(M002)

Date: 16-Dec-11

No.: RM002021

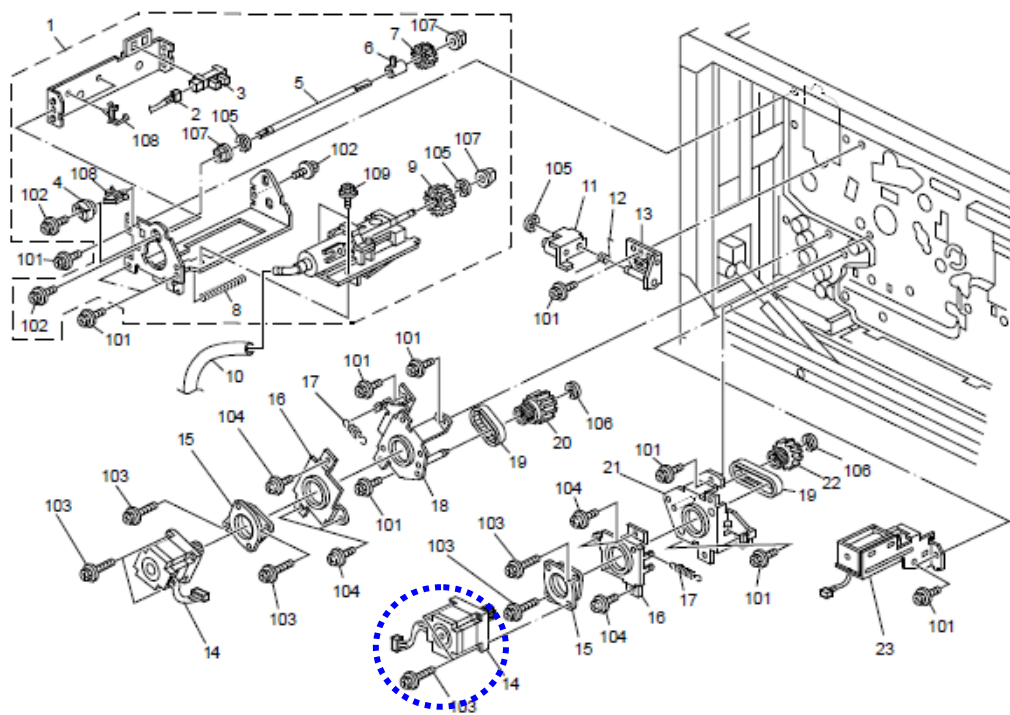
Katana-P1(M002)

Old Part Number	New Part Number	Description	Q'ty	Int	Page	Index	Note
-	11050516	Clamp	1	-	127	110	-

NOTE: The newly added clamp is immediately below the harness connector of the motor indicated with the blue circle in the diagram below, and attaches to a bracket that is not registered as a service part.

The modification described in this bulletin also applies to ALL of the Katana Models (B234,B235,B236,D059,D060,D061,D101,D102,D103,M003,M004).

56.Drive Section 5 (M002/M003/M004)



Reissued: 09-Nov-12

Model: Aries-C1.5/P1.5, AG-C1/P1, AGL-C1/P1, B-C3/C3.5/C4, DDP	Date: 11-May-06	No.: RB234014o
---	-----------------	----------------

RTB Reissue

The items in bold italics have been added.

Subject: Controller firmware (Finisher)		Prepared by: J. Ohno	
From: 1st PP Tech Service Sect., PP Tech Service Dept.			
Classification:	<input type="checkbox"/> Troubleshooting <input type="checkbox"/> Mechanical <input type="checkbox"/> Paper path <input type="checkbox"/> Product Safety	<input type="checkbox"/> Part information <input type="checkbox"/> Electrical <input type="checkbox"/> Transmit/receive <input checked="" type="checkbox"/> Other (Firmware)	<input type="checkbox"/> Action required <input type="checkbox"/> Service manual revision <input type="checkbox"/> Retrofit information <input checked="" type="checkbox"/> Tier 2

This RTB has been issued to announce the firmware release information for the **Finisher**.

Version	Program No.	Effective Date	Availability of RFU
02.050:64	B8305102V	December 2012 production	Not available
02.040:63	B8305102T	January 2012 production	Not available
02.030:62	B8305102S	March 2011 production	Not available
2.000:61	B8305102R	October 2010 production	Not available
1.900:60	B8305102Q	January 2010 production	Not available
1.820:59	B8305102P	Aug 2009 production	Not available
1.800:58	B8305102N	June 2009 production	Not available
1.600	B8305102M	March 2009 production	Not available
1.500	B8305102L	January 2009 production	Not available
1.420:51	B8305102K	August 2008 production	Not available
1.400:50	B8305102J	July 2008 production	Not available
1.310:48	B8305102H	May 2008 production	Not available
1.160	B8305102G	April 2007 production	Not available
1.140	B8305102F	November 2006 production	Not available
1.100	B8305102E	June 2006 production	Not available

Note: Definition of Availability of RFU via @Remote
“Available”: The firmware can be updated via RFU or SD card.

“Not available”: The firmware can only be updated via SD card.

Version	Modified Points or Symptom Corrected
02.050:64	<i>Symptoms corrected: Jogging performance of the shift tray is poor when printing A5 SEF.</i>
02.040:63	Specification Changes: A span of 250msec to withhold the OFF signal was newly prescribed as a specification of the GBC Stream Punch.
02.030:62	Specification Change: With the Booklet Maker BK5010, it enables saddle-stitch of custom size. Currently, this function is available only when connected to CREO. Symptoms Corrected: <ul style="list-style-type: none"> The error occurs when making one booklet with the Booklet Maker BK5010. The jam occurs when copy/print with switching the punch-hole type. This occur when we use main machine(110cpm or 135 cpm)/SR5000 with decurl unit.

Reissued: 09-Nov-12

Model: Aries-C1.5/P1.5, AG-C1/P1, AGL-C1/P1, B-C3/C3.5/C4, DDP		Date: 11-May-06	No.: RB234014o
Version	Modified Points or Symptom Corrected		
2.000:61	<p>Specification Change</p> <ul style="list-style-type: none"> Process Speed Setting (Low) on the Pro C901/C901S is supported. Z-fold staple job is supported for 8K paper size (267 × 390mm applied in China) on the RICOH Pro 907/1107/1357. Initialization behavior of the exit guide plate rollers have been changed to rotate the drive rollers to prevent the drive rollers from adhering to the driven rollers. <p>Symptoms Corrected:</p> <ul style="list-style-type: none"> Jam 116 occurs when switching from proof mode to staple mode while the stapler is in the position for staple refill. With the Booklet Maker BK5010 installed the control panel remains to indicate jam status even after clearing the jam. 		
1.900:60	<p><u>Modified Points:</u></p> <ul style="list-style-type: none"> Countermeasure against the machine cannot print when SC750 is occurring. Countermeasure against the machine cannot print when SC721 is occurring. <p><u>SC750 Cause</u> After the SR5000 send the “tray rising” command, it did not send “stop rising tray” command. The engine was waiting to receive the “stop rising tray” command; therefore, it did not start printing</p> <p><u>Measure</u> When JAM and SC occurred on tray lift motor, while sending the “tray rising” command, SR5000 will also send “stop tray rising” command, in order to start printing.</p> <p><u>SC721 Cause</u> After the SR5000 send the “wait” command, it did not send “wait cancel” command. The engine was waiting to receive the “wait cancel” command; therefore, it did not start printing</p> <p><u>Measure</u> If the staple jogger motor is not at the home position when standby poison check occurred, “request default the position flag” will be set; however, when JAM or SC occurred on stable jogger motor, changed to “request default the position flag” will not be set. When checking whether there are staples, if the stapler is not at the home position,” move to the home position” signal was released but, for ver. 1.900:60, when JAM or SC occurred in stapler motor, it does not sent the “move to the home position” signal.</p>		
1.820:59	<p>Symptoms Corrected:</p> <ol style="list-style-type: none"> The shift tray does not descend nor ascend even when the emergency stop button is pressed. 		

Reissued: 09-Nov-12

Model: Aries-C1.5/P1.5, AG-C1/P1, AGL-C1/P1, B-C3/C3.5/C4, DDP			Date: 11-May-06	No.: RB234014o
Version	Modified Points or Symptom Corrected			
	<p>2. The machine stalls at a "printing in process" status in a jam where the paper is not exit to the shift tray. This symptom occurs only when installing the Katana-C2 and the EFI controller.</p> <p><NOTE> Please apply firmware V1.820 or later for a configuration consisted of the Katana-C2 and the EFI controller.</p>			
1.800:58	<p>Symptom Corrected:</p> <ul style="list-style-type: none"> - Jam115 when changing from Standard size to Non-standard size. <p>Other changes:</p> <ul style="list-style-type: none"> - Moving distance of initialization has been changed to "2mm after sensor turn-off". 			
1.600	<p><NOTE> Please apply Version (V1.600) onward when applying Plockmatic/GBC on the Aegis.</p> <p>Symptom Corrected:</p> <ol style="list-style-type: none"> 1. During Plockmatic connection, JAM115 occurs when operating manual stapling. 2. During Plockmatic connection, indication of "out of staples" does not disappear even when staples are added after commanding a saddle-stitch job, in which the VICTORIA-E is powered in a "out of staples" status. 3. During Plockmatic connection, when commanding saddle-stitch of more than 2 sheets consisted of a single print using <ol style="list-style-type: none"> a 12x18 sheet, job completion is not correctly informed in order to start the 2nd stapling function, and results in a "still copying" status. 4. During GBC connection, sheets that are not assigned to be punched are punched. <p>Changes made:</p> <p>When operating saddle-stitch of more than 16 sheets at Plockmatic connection,</p> <ol style="list-style-type: none"> a the width of the exit guide plate opening will be set to 5mm. b the shutting timing of the exit guide plate will be when 20mm of the leading edge goes through. 			

Reissued: 09-Nov-12

Model: Aries-C1.5/P1.5, AG-C1/P1, AGL-C1/P1, B-C3/C3.5/C4, DDP		Date: 11-May-06	No.: RB234014o
Version	Modified Points or Symptom Corrected		
1.500	<p>Symptom Corrected:</p> <ol style="list-style-type: none"> 1. Operation stops and will not recover when "stop" button on VICTORIA-E_LED is pressed during stacker exit. 2. Deactivate request cannot be cancelled at Plockmatic connection. 3. Deactivate request cannot be cancelled at GBC connection. 4. Under the condition of having no staples, jam occurs when staple function is released after its operation has been stopped. 5. In Aegis-P1, paper cannot be fed when Plockmatic is connected; indicator shows "full" in shift tray. <p>Other changes:</p> <ol style="list-style-type: none"> 1. Under staple-mode, single sheet of paper ejected to the shift tray will not be stapled. <p>※ Although display differs in version-up Finisher Version (1.500:53) and SP mode Version (1.500:52), there is no problem as long as the SP mode Version is set to "1.500".</p>		
1.420:51	<p>Changes:</p> <p>Support for Aegis-C1/P1.</p>		
1.400:50	<p>Symptom Corrected:</p> <ul style="list-style-type: none"> • When the SP adjustment value for the Jogger is set to +1.5mm, the Jogger gradually widens and results in misaligned sheets. 		
1.310:48	<p>Symptom Corrected:</p> <ol style="list-style-type: none"> 1. When a jam occurs at the GBC, the number of sheets of recovery is different. (The 1st sheet is omitted.) <p>Other changes:</p> <ol style="list-style-type: none"> 1. Support for Plockmatic SRA3 size. 		
1.160	<p>Symptom corrected:</p> <ol style="list-style-type: none"> 1. JAM 230 sometimes occurs, and the VICTORIA does not send its self-status to machine. 2. Sometimes the VICTORIA cannot align the paper correctly when stapling. 3. If GBC punch is selected during a copy job already set for 3-hole punching, the paper is punched by both the VICTORIA and the GBC punch unit. 		
1.140	<p>Symptom corrected:</p> <ol style="list-style-type: none"> 1. The machine stalls and displays "Copying..." if the top sheet on the shift tray is removed after the tray is full. Note: When this occurs, copies cannot be made. 2. The machine displays SC625 instead of a "jam" message when an exit jam occurs with stapled paper. 3. Sometimes, the punch motor does not turn ON. 4. The last sheet of a staple job is not stapled correctly. Conditions: 2 sheets/set, A4 LEF 5. Jam 111 6. The shift tray does not shift (stacking only) after an exit jam at the shift tray is 		

Reissued: 09-Nov-12

Model: Aries-C1.5/P1.5, AG-C1/P1, AGL-C1/P1, B-C3/C3.5/C4, DDP		Date: 11-May-06	No.: RB234014o
Version	Modified Points or Symptom Corrected		
	cleared. 7. SC625 occurs after a staple jam is cleared. Conditions: The staple jam occurs when the operator opens the door during staple stacking. 8. The machine displays "Copying..."if the previous job used mixed-sizes and was cancelled. 9. A error with the jogger fences occurs when using Z-fold stapling mode.		
1.100	Latest Firmware Version		