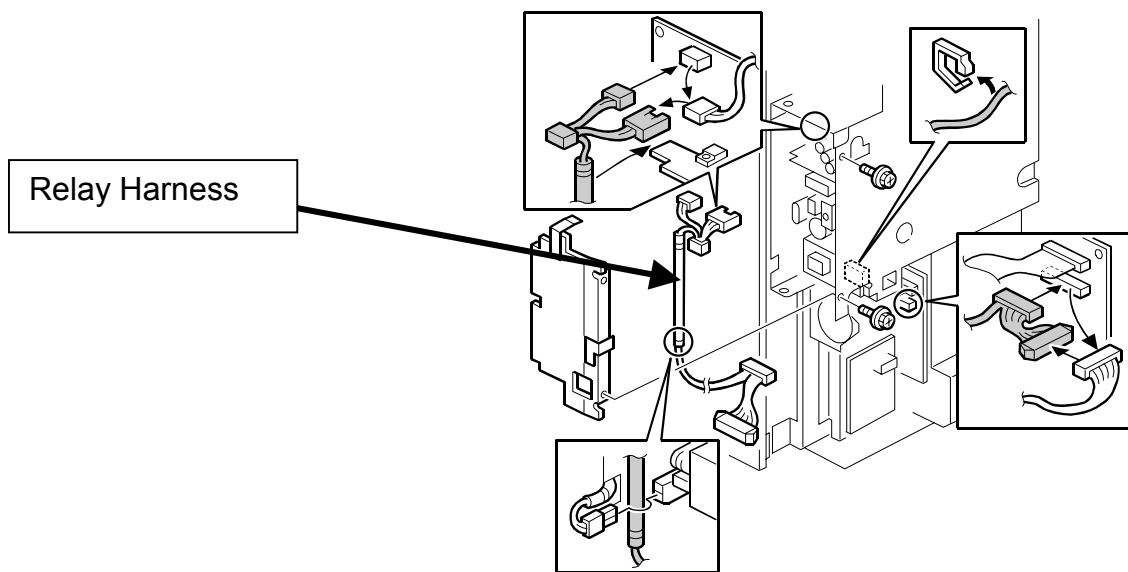


Model: Iris2/Lilac2		Date: 24-Nov-00	No.: RB017001
Subject: Relay Harness of the Fax Unit		Prepared by: N. Kaiya	
From: Technical Services Dept., GTS Division			
Classification:	<input type="checkbox"/> Troubleshooting <input type="checkbox"/> Part information <input checked="" type="checkbox"/> Action required <input type="checkbox"/> Mechanical <input type="checkbox"/> Electrical <input type="checkbox"/> Service manual revision <input type="checkbox"/> Paper path <input type="checkbox"/> Transmit/receive <input type="checkbox"/> Retrofit information <input type="checkbox"/> Other ()		

When installing the fax unit (machine code B383), it is not necessary to install the relay harness shown in the below figure.



The relay harness is packed with some of the August and September production lots of the fax unit to fix a problem with the domestic version product. The harness is not mentioned in the service manual.

The purpose of the relay harness was to stabilize +5VE power for the FCU by obtaining 5V power directly from the interface unit power supply unit. This was necessary because +5VE may drop and reset the CPU when the machine goes back to stand-by mode from energy saver mode. However, even if the CPU is reset when the machine goes back to stand-by mode from energy saver mode, no problem will appear with the overseas version products. Instead, the relay harness may cause the documents stored in the fax memory to disappear when the main switch is turned off and then on. This is because +5VE is supplied slightly after +5V when the main switch is turned on, and the battery back up to the memory is momentarily cut.

Model: Iris2/Lilac2

Date: 24-Nov-00

No.: RB017001

The following table shows the serial numbers of the fax units with the relay harness. No other fax units include the relay harness.

Model Code	Production Month	Number of Units	Serial Number
B383-17	Aug. 2000	55	H6200800001 – H6200800055
	Sep. 2000	71	H6200900001 – H6200800036 H6200900040 – H6200800042 H6200900044, H6200800046 H6200900048 – H6200800059 H6200900061 – H6200800062 H6200900065 – H6200800078 H6200900081 – H6200800082
B383-27	Aug. 2000	39	H6200800056 – H6200800066 H6200800068 – H6200800095
	Sep. 2000	75	H6200900083 – H6200800157
B383-29	Aug. 2000	9	H6200800096 – H6200800104
	Sep. 2000	11	H6200900158 – H6200800168

Model: Iris2/Lilac2 (Controller E-310)		Date: 24-Jan-01	No.: RB017002
Subject: Important Notes when installing the E-310		Prepared by: Chisato Tsuji	
From: Technical Services Dept., GTS Division			
Classification:	<input type="checkbox"/> Troubleshooting <input type="checkbox"/> Mechanical <input type="checkbox"/> Paper path <input type="checkbox"/> Other ()	<input type="checkbox"/> Part information <input type="checkbox"/> Electrical <input type="checkbox"/> Transmit/receive	<input checked="" type="checkbox"/> Action required <input type="checkbox"/> Service manual revision <input type="checkbox"/> Retrofit information

This bulletin contains some important notes concerning the installation of the color controller E-310 for the Iris2/Lilac2.

1. Approved Firmware for the Iris2/Lilac2 for connection with the printer controller E-310.

When scanning an A4 or A3 original using the ADF and Fiery controller, the scanned image comes out blank with some old firmware versions.

To solve this problem, upgrade either the main or IPU firmware to the following version:

Model Name	Main Control	Scanner IPU
Iris2	Ver. 1.072 or newer	Ver. 1.05 or newer
Lilac2	Ver 1.132 or newer	Ver. 1.05 or newer

- In order to meet EMI Class B certification requirements, a ferrite clamp must be attached to the video interface cable inside the I/F unit. For details, refer to Appendix A of the E-310 Installation & Service Guide.
- After the controller is installed, turn on the copier main power, access SP mode 6-910-000 ("Printer/Scanner key setting"), and change the setting from "0" to "1". Please refer to Appendix A of the E-310 Installation & Service Guide.

Model: Irsi2/Lilac2		Date: 31-Jan-01	No.: RB017003
Subject: Noise from IPU cooling fan		Prepared by: M. Tsuyuki	
From: Technical Services Dept., GTS Division			
Classification:	<input checked="" type="checkbox"/> Troubleshooting	<input type="checkbox"/> Part information	<input type="checkbox"/> Action required
	<input type="checkbox"/> Mechanical	<input type="checkbox"/> Electrical	<input type="checkbox"/> Service manual revision
	<input type="checkbox"/> Paper path	<input type="checkbox"/> Transmit/receive	<input type="checkbox"/> Retrofit information
	<input type="checkbox"/> Other ()		

SYMPTOM

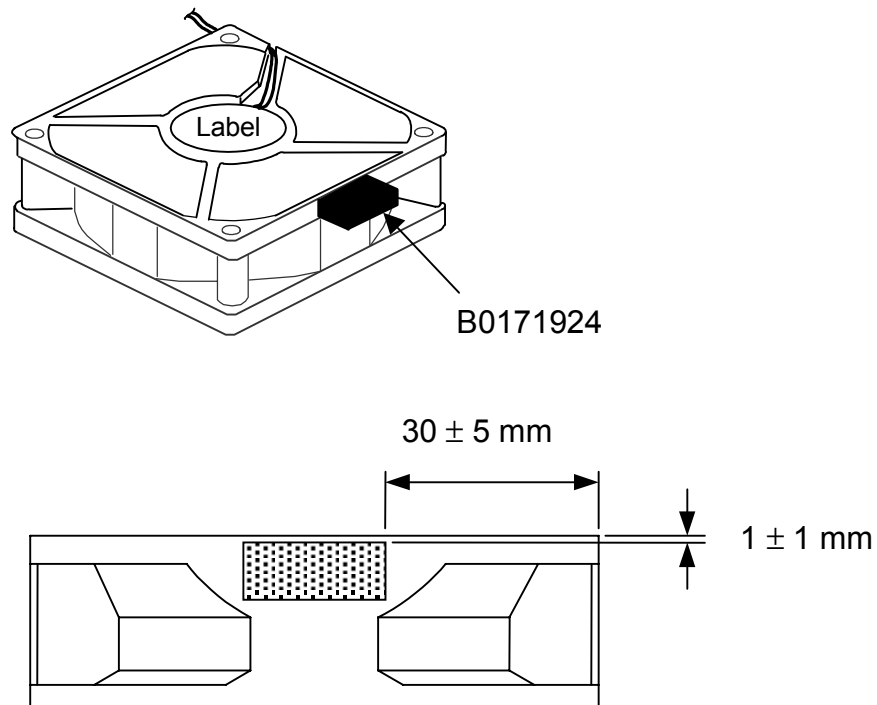
Noise can sometimes be heard from the IPU fan motor while the machine is in standby mode.

CAUSE

In slow speed mode, the reduced speed of the motor can sometimes cause the casing to resonate.

SOLUTION

Attach the B0171924 damper to the IPU cooling fan as shown below.



Model: Iris2/Lilac2 (Fax Option)		Date: 31-Jan-01	No.: RB017004
Subject: Message when install fax unit		Prepared by: M. Tsuyuki	
From: Technical Services Dept., GTS Division			
Classification:	<input type="checkbox"/> Troubleshooting	<input type="checkbox"/> Part information	<input type="checkbox"/> Action required
	<input type="checkbox"/> Mechanical	<input type="checkbox"/> Electrical	<input type="checkbox"/> Service manual revision
	<input type="checkbox"/> Paper path	<input type="checkbox"/> Transmit/receive	<input type="checkbox"/> Retrofit information
	<input checked="" type="checkbox"/> Other (Additional information)		

If a fax comes in while the machine is in Energy Saver Mode, there are some cases where the connection is lost because the FCU is not able to come on line fast enough. This is because it waits for the main board wakeup signal. To ensure that incoming transmissions are properly received, the FCU in all production units will bring itself on line instead.

However, as a minor side effect:

The following is displayed only when the main power is turned on for the first time following installation. This is because the main board has not yet confirmed the area and language information with the FCU:

" Area or Language of ROM is different. Please check ROM version".

Action:

Simply press "OK" and the display will be cleared.

Model: Iris2/Lilac2		Date: 31-Jan-01	No.: RB017005
Subject: Service Manual		Prepared by: M. Tsuyuki	
From: Technical Services Dept., GTS Division			
Classification:	<input type="checkbox"/> Troubleshooting <input type="checkbox"/> Part information <input type="checkbox"/> Action required <input type="checkbox"/> Mechanical <input type="checkbox"/> Electrical <input checked="" type="checkbox"/> Service manual revision <input type="checkbox"/> Paper path <input type="checkbox"/> Transmit/receive <input type="checkbox"/> Retrofit information <input type="checkbox"/> Other ()		

Please correct your service manual as follows.

Page	Position	Item	
		Incorrect	Correct
1-4	Power Consumption	0.4 kW	0.2 kW
	Stand-by:	1.1 kW	0.7 kW
	Copying		
	Weight		
	B018:	108 kg	108 kg (237 lbs.) / NA 109 kg (239.8 lbs.) / EU,AA
	B017	112 kg	111 kg (244.2 lbs.) / NA 112 kg (246.4 lbs.) / EU,AA
1-28	PCB4	-	Add function: Analyzes image for anti-counterfeiting (B017/B018)
	PCB17	Delete function: Analyzes image for anti-counterfeiting (B017/B018)	-
2-21	14 lines from the top	Capacity of the oil tank is increased from 350cc to 498cc .	Capacity of the oil tank is increased from 350cc to 430cc .
3-17	2 lines from the bottom, hook the toner replacement tool on the hunger [B], hook the toner replacement tool on the hanger [B]
7-4	SC 193 Possible Cause/ Troubleshooting Procedure	1. test the scanner IPU board (SP 4-904-01 and 002). If not OK, replace the scanner IPU board. 2. Replace the IDU board.	[A258/A259/A260] 1. Test the scanner IPU board (SP 4-904-01 and 002). If not OK, replace the scanner IPU board. 2. Replace the IDU board. [B017/B018] Replace the scanner IPU board.
7-29	Self check result table	Displayed Value '85'	Displayed Value ' 89 '

Model: Iris2/Lilac2		Date: 26-Feb-01	No.: RB017006
Subject: Firmware Modification History		Prepared by: M. Tsuyuki	
From: Technical Services Dept., GTS Division			
Classification:	<input type="checkbox"/> Troubleshooting <input type="checkbox"/> Part information <input type="checkbox"/> Action required <input type="checkbox"/> Mechanical <input type="checkbox"/> Electrical <input type="checkbox"/> Service manual revision <input type="checkbox"/> Paper path <input type="checkbox"/> Transmit/receive <input type="checkbox"/> Retrofit information <input checked="" type="checkbox"/> Other ()		

Lilac2

Version	Contents of Modification		Remarks
1.132	1	To remove 12 mm banding within 30 mm from the leading edge, the OFF timing of the revolver motor was changed.	
	2	To prevent offset image if the following conditions 1 and 2, or 1 and 3 occur at the same time, ON/OFF timing of the separation corona was changed. 1) Low humidity (example: 20°C,10% or 10°C,15%) 2) Full color (multi-copy), longer than A4 (8.5x11) sideways, from the 3 rd copy. 3) Making a mono color copy within 1 minute after making full color copies (longer than A4 [8.5x11] sideways.	
	3	Do the main corona wire cleaning during developer setup (SP2-225-X) to prevent uneven image at installation.	
	4	The following problem was corrected: The LED for the fax key stays red after clearing a duplex jam.	
	5	The following problem was corrected: When scanning A4 (8.5x11) or A3 (11x17) size using the ADF and a Fiery controller, the scanned image becomes white.	

Ver.	1.104	1.132
B017-14	1st Mass Pro.	L0861020001
B017-15	1st Mass Pro.	H6010200001
B017-17	1st Mass Pro.	H60103XXXX
B017-22	1st Mass Pro.	H6010100035
B017-24	1st Mass Pro.	L0861020016
B017-26	1st Mass Pro.	4E50210001
B017-27	1st Mass Pro.	H6010100155
B017-29	1st Mass Pro.	H6010200181

Model: Iris2/Lilac2

Date: 26-Feb-01

No.: RB017006

Iris2

Version	Contents of Modification		Remarks
1.072	1	To remove 12 mm banding within 30 mm from the leading edge, the OFF timing of the revolver motor was changed.	
	2	To prevent offset image if the following conditions 1 and 2, or 1 and 3 occur at the same time, ON/OFF timing of the separation corona was changed. 4) Low humidity (example: 20°C,10% or 10°C,15%) 5) Full color (multi-copy), longer than A4 (8.5x11) sideways, from the 3 rd copy. 6) Making a mono color copy within 1 minute after making full color copies (longer than A4 [8.5x11] sideways.	
	3	Do the main corona wire cleaning during developer setup (SP2-225-X) to prevent uneven image at installation.	
	4	The following problem was corrected: The LED for the fax key stays red after clearing a duplex jam.	
	5	The following problem was corrected: When scanning A4 (8.5x11) or A3 (11x17) size using the ADF and a Fiery controller, the scanned image becomes white.	

Ver.	1.064	1.072
B018-14	1st Mass Pro.	L087102XXXX
B018-15	1st Mass Pro.	H59102XXXX
B018-17	1st Mass Pro.	H59102XXXX
B018-22	1st Mass Pro.	H5910100072
B018-24	1st Mass Pro.	L0871020001
B018-26	1st Mass Pro.	4E40210001
B018-27	1st Mass Pro.	H59102XXXX
B018-29	1st Mass Pro.	H5910200240

Model: Iris2/Lilac2	Date: 26-Feb-01	No.: RB017006
---------------------	-----------------	---------------

IPU (Iris2/Lilac2)

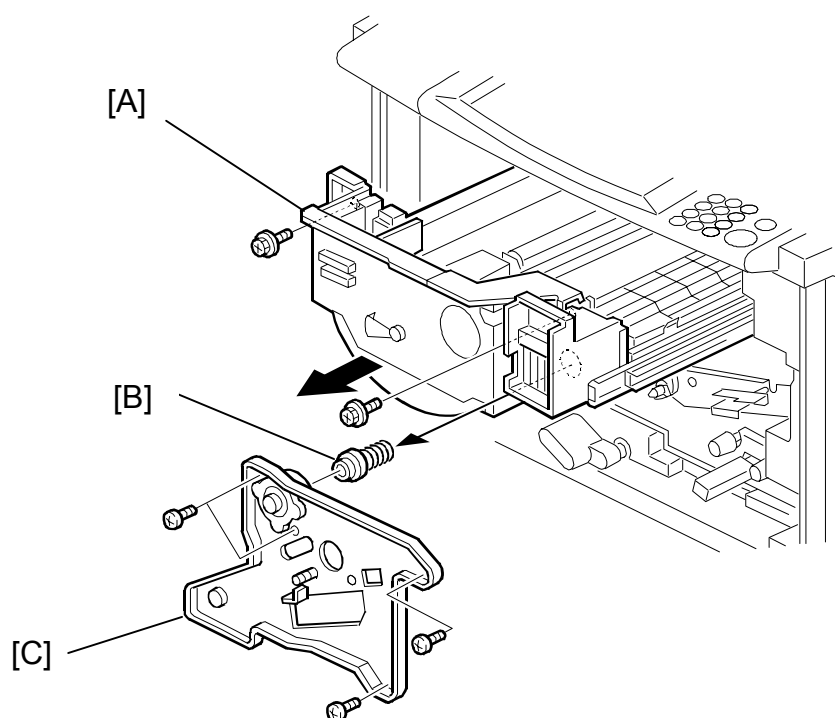
Version	Contents of Modification		Remarks
1.05	1	The separation threshold level for letter and photo was changed.	
	2	The following problem was fixed. When scanning A4 or A3 size using the ADF and Fiery controller, the scanned image becomes white. At least the Main or IPU program should be upgraded.	

Ver.	1.04	1.05
B017-14	1st Mass Pro.	L0860120001
B017-15	1st Mass Pro.	H6001100001
B017-17	1st Mass Pro.	H6001100021
B017-22	1st Mass Pro.	H6001100121
B017-24	1st Mass Pro.	L0860120007
B017-26	1st Mass Pro.	4E51100001
B017-27	1st Mass Pro.	H6001100274
B017-29	1st Mass Pro.	H6001100524
B018-14	1st Mass Pro.	L087012XXXX
B018-15	1st Mass Pro.	H5901100001
B018-17	1st Mass Pro.	H5901100020
B018-22	1st Mass Pro.	H5901100368
B018-24	1st Mass Pro.	L0870120001
B018-26	1st Mass Pro.	4E41200001
B018-27	1st Mass Pro.	H5901100695
B018-29	1st Mass Pro.	H5901101003

Model: Iris2/Lilac2		Date: 13-Mar-01	No.: RB017007
Subject: Note when remove and install the drawer unit		Prepared by: M. Tsuyuki	
From: Technical Services Dept., GTS Division			
Classification:	<input type="checkbox"/> Troubleshooting <input type="checkbox"/> Mechanical <input type="checkbox"/> Paper path <input checked="" type="checkbox"/> Other (Note)	<input type="checkbox"/> Part information <input type="checkbox"/> Electrical <input type="checkbox"/> Transmit/receive	<input type="checkbox"/> Action required <input type="checkbox"/> Service manual revision <input type="checkbox"/> Retrofit information

Please note the following when removing and installing the drawer unit.

When removing the drawer unit [A], remove the spring and its holder [B] when detaching the transfer belt unit stay [C]. Otherwise, the spring and its holder can drop out when the drawer unit is pulled out. In addition, the spring and holder may spring out when the drawer unit is pushed in at unit installation.



Model: Iris2/Lilac2 (Controller E-310)		Date: 21-Mar-01	No.: RB017008
Subject: E-310 Ver.1.1 (128MB) model release		Prepared by: Chisato Tsuji	
From: Technical Services Dept., GTS Division			
Classification:	<input type="checkbox"/> Troubleshooting <input checked="" type="checkbox"/> Part information <input type="checkbox"/> Action required <input type="checkbox"/> Mechanical <input type="checkbox"/> Electrical <input checked="" type="checkbox"/> Service manual revision <input type="checkbox"/> Paper path <input type="checkbox"/> Transmit/receive <input type="checkbox"/> Retrofit information <input type="checkbox"/> Other ()		

The E-310 Ver.1.1 machines (G938-04, G938-05) were released from March, 2001.

Machine Codes and Default System/User Software Versions

Machine	Memory Configuration	User CD	System CD (Service Kit)
G938-01 US	256 MB (128 x 2)	Ver.1.0 (G9385081)	Ver.1.0 (G9389500)
G938-02 Int'l	256 MB (128 x 2)	Ver.1.0 (G9385081)	Ver.1.0 (G9389500)
G938-04 US	128 MB	Ver.1.1 (G9385181)	Ver.1.1 (G9389501)
G938-05 Int'l	128 MB	Ver.1.1 (G9385181)	Ver.1.1 (G9389501)

Software Interchangeability (User/System)

	Interchangeability	
System Software (Ver.1.0/Ver.1.1)	X/O	X/O as a set
User Software (Ver.1.0/Ver.1.1)	X/X	

Ricoh Serial Number Format

Y= Last digit of the year (e.g. 2001 is 1).

MM = Month + 84 (e.g. January is 85, December is 96).

Machine:	Memory:	Serial Number:
G938-01 US	256 MB (128 x 2)	P47YMM00001 - 19999
G938-02 Int'l	256 MB (128 x 2)	P47YMM50001 - 69999
G938-04 US	128 MB	P47YMM20001 - 49999
G938-05 Int'l	128 MB	P47YMM70001 - 99999

Differences between E-310 Ver.1.0 (G938-01, -02) and Ver.1.1 (G938-04, -05)

- Components:

P/N for G938-01 G938-02	P/N for G938-04 G938-05	Description:	Q'ty:	Note:
G9385020	G9385020	128MB DIMM	2 (G938-01,-02) 1 (G938-04,-05)	P/N is the same but the Q'ty is different
G9385081	G9385181 (EFI P/N 45021491: 10pcs)	User Software	1	

Model: Iris2/Lilac2 (Controller E-310)		Date: 21-Mar-01	No.: RB017008	
P/N for G938-01 G938-02	P/N for G938-04 G938-05	Description:	Q'ty:	Note:
G9385082	G9385182 (EFI P/N 45021468)	Doc Pack English	1	Getting Started (Same) Color Guide (Same) Job Management Guide (Same) Printing Guide (Same) Configuration Guide (Same) Release Notes 1.1 (New) Addendum (New)
G9389500 * will be changed to G9389501 from March 2001 See MB No. MG938001	G9389501 (EFI P/N 45021493)	Service Kit (System CD)	1	Please order this item as soon as possible.

- Notes on software (when both the System Software Ver.1.1 and User Software 1.1 are used):
 - A new scanning compression technology has been applied, which uses just 128 MB of memory.
Note: Scanning quality is identical to that of the V1.0 256MB.
 - Expert color settings can now be accessed from the printer driver. There will be a User Addendum packed together with the controller explaining this function.
 - The Job Cancel procedure from the operation panel will be modified as follows:
When an error occurs, the error message itself (e.g. "Load A4...") will be displayed on the panel instead of the Job Cancel message. Users can view the Job Cancel message by using the scroll button on the panel.

Important Notes:

Do not install system Ver.1.0 in 128 MB machines, as the scanning quality may be very poor.

Reissued: 23-Apr-01

Model: Iris2/Lilac2		Date: 26-Feb-01	No.: RB017006a
Subject: Firmware Modification History		Prepared by: M. Tsuyuki	
From: Technical Services Dept., GTS Division			
Classification:	<input type="checkbox"/> Troubleshooting <input type="checkbox"/> Part information <input type="checkbox"/> Action required <input type="checkbox"/> Mechanical <input type="checkbox"/> Electrical <input type="checkbox"/> Service manual revision <input type="checkbox"/> Paper path <input type="checkbox"/> Transmit/receive <input type="checkbox"/> Retrofit information <input checked="" type="checkbox"/> Other ()		

This RTB explains the firmware modification history.

Table of contents

	Page
1. Firmware information	2
1.1 Iris2 firmware	2
1.2 Lilac2 firmware	2
1.3 IPU firmware	2
1.4 FCU firmware	2
2. Iris2 firmware	3
2.1 Modification history	3
2.2 Contents of modification	4
2.3 Cut-in serial number information	4
3. Lilac2 firmware	5
3.1 Modification history	5
3.2 Contents of modification	5
3.3 Cut-in serial number information	6
4. IPU firmware	7
4.1 Modification history	7
4.2 Contents of modification	7
4.3 Cut-in serial number information	7
5. FCU firmware	8
5.1 Modification history	8
5.2 Contents of modification	8
5.3 Cut-in serial number information	8

Reissued: 23-Apr-01

Model: Iris2/Lilac2	Date: 26-Feb-01	No.: RB017006a
---------------------	-----------------	----------------

1. Firmware Information

1.1 Iris2 Main Firmware

Type	P/N	Model Code (B018)	Language			
NA	B0185197	14, 15,17	English	French	Spanish	Brazilian
EU	B0185198	22, 24, 26, 27, 29	English	French	German	Italian
EU2	B0185181	Language software	Spanish	Dutch	Danish	Swedish
EU3	B0185182	Language software	Portugese	Norwegian	Czech	Polish
EU4	B0185183	Language software	Russian	English	-	-

Languages in boldface are the defaults.

1.2 Lilac2 Main Firmware

Type	P/N	Model Code (B017)	Language			
NA	B0175197	14, 15,17	English	French	Spanish	Brazilian
EU	B0175198	22, 24, 26, 27, 29	English	French	German	Italian
EU2	B0175181	Language software	Spanish	Dutch	Danish	Swedish
EU3	B0175182	Language software	Norwegian	Portugese	Czech	Polish

Languages in boldface are the defaults.

1.3 IPU Firmware

P/N	Model	Code
B0175133	B018	14, 15, 17, 22, 24, 26, 27, 29
	B017	14, 15, 17, 22, 24, 26, 27, 29

1.4 FCU Firmware

Type	P/N	Model Code (B383)	Language		
NA	B3835582	17	English	French	Spanish
EU	B3835584	27	English	French	German
EU2	B3835585	Language software	Spanish	Dutch	Danish
EU3	B3835586	Language software	Portugese	Norwegian	Czech
EU4	B3835587	Language software	Italian	Swedish	Polish

Languages in boldface are the defaults.

Reissued: 23-Apr-01

Model: Iris2/Lilac2

Date: 26-Feb-01

No.: RB017006a

2. Iris2 Main Firmware

2.1 Modification History

NA Model

Part Number/ Suffix	Version	C.SUM	Production
B0185197G	1.064	9AF7	1st mass production
H	1.072	3546	Refer to 2.3
J	1.09	DED0	

EU Model

Part Number/ Suffix	Version	C.SUM	Production
B0185198G	1.064	F5B6	1st mass production
H	1.072	5F3B	Refer to 2.3
J	1.09	F89F	

EU2 Model

Part Number/ Suffix	Version	C.SUM	Production
B0185181	1.064	76B	1st mass production
A	1.072	5507	Refer to 2.3
B	1.09	678C	

EU3 Model

Part Number/ Suffix	Version	C.SUM	Production
B0185182	1.064	AC48	1st mass production
A	1.072	C909	Refer to 2.3
B	1.09	E763	

EU4 Model

Part Number/ Suffix	Version	C.SUM	Production
B0185183	1.064	B0FB	1st mass production
A	1.072	961B	Refer to 2.3
B	1.09	53BC	

Reissued: 23-Apr-01

Model: Iris2/Lilac2	Date: 26-Feb-01	No.: RB017006a
---------------------	-----------------	----------------

2.2 Contents of Modification

Version	Contents of Modification		Remarks
1.064	-	This version has been used from the first mass production.	
1.072	1	To remove 12mm banding within 30mm from the leading edge, the OFF timing of the revolver motor was changed.	
	2	To prevent offset image if the following conditions 1 and 2, or 1 and 3 occur at the same time, ON/OFF timing of the separation corona was changed. 1) Low humidity (example: 20°C,10% or 10°C,15%) 2) Full color (multi-copy), longer than A4 (8.5x11) sideways, from the 3rd copy. 3) Making a mono color copy within 1 minute after making full color copies (longer than A4 (8.5x11) sideways.	
	3	Perform the main corona wire cleaning during developer setup (SP2-225-X) to prevent uneven image at installation.	
	4	The following problem was corrected: The LED for the fax key stays red after clearing a duplex jam.	
	5	The following problem was corrected: When scanning A4 (8.5x11) or A3 (11x17) size using the ADF and a Fiery controller, the scanned image becomes white.	
1.09	1	The following problem was fixed. SC326 may occur if the following 3 conditions are met: 1) Multi-copy run 2) Image rotation mode 3) Suffix of the LD control board P/N (B0175291) is before H.	
	2	The following problem was fixed. SC121 may occur if the following 3 conditions are met. 1) Multi-copy run 2) Image rotation mode 3) Suffix of the LD control board P/N (B0175291) is before H.	
	3	Documents received in night mode are stored as substitution reception documents and are not printed out.	
	4	Software modified to so that it can be used with the RSS function.	

2.3 Cut-in Serial Number Information

Ver.	1.064	1.072	1.09
B018-14	1st Mass Pro.	L087102XXXX	
B018-15	1st Mass Pro.	H59102XXXX	
B018-17	1st Mass Pro.	H59102XXXX	
B018-22	1st Mass Pro.	H5910100072	
B018-24	1st Mass Pro.	L0871020001	
B018-26	1st Mass Pro.	4E40210001	
B018-27	1st Mass Pro.	H59102XXXX	
B018-29	1st Mass Pro.	H5910200240	

Reissued: 23-Apr-01

Model: Iris2/Lilac2

Date: 26-Feb-01

No.: RB017006a

3. Lilac2 Main Firmware

3.1 Modification History

NA Model

Part Number/ Suffix	Version	C.SUM	Production
B0175197G	1.104	6519	1st mass production
H	1.132	963D	Refer to 3.3
J	1.15	4328	

EU Model

Part Number/ Suffix	Version	C.SUM	Production
B0175198G	1.104	C6FD	1st mass production
H	1.132	241A	Refer to 3.3
J	1.15	116E	

EU2 Model

Part Number/ Suffix	Version	C.SUM	Production
B0175181	1.104	A147	1st mass production
A	1.132	EB53	Refer to 3.3
B	1.15	4501	

EU3 Model

Part Number/ Suffix	Version	C.SUM	Production
B0175182	1.104	A5D9	1st mass production
A	1.132	22EA	Refer to 3.3
B	1.15	29DD	

Reissued: 23-Apr-01

Model: Iris2/Lilac2	Date: 26-Feb-01	No.: RB017006a
---------------------	-----------------	----------------

3.2 Contents of Modification

Version	Contents of Modification		Remarks
1.104	-	This version has been used from the first mass production.	
1.132	1	To remove 12mm banding within 30mm from the leading edge, the OFF timing of the revolver motor was changed.	
	2	To prevent offset image if the following conditions 1 and 2, or 1 and 3 occur at the same time, ON/OFF timing of the separation corona was changed. 1) Low humidity (example: 20°C,10% or 10°C,15%) 2) Full color (multi-copy), longer than A4 (8.5x11) sideways, from the 3rd copy. 3) Making a mono color copy within 1 minute after making full color copies (longer than A4 (8.5x11) sideways.	
	3	Perform the main corona wire cleaning during developer setup (SP2-225-X) to prevent uneven image at installation.	
	4	The following problem was corrected: The LED for the fax key stays red after clearing a duplex jam.	
	5	The following problem was corrected: When scanning A4 (8.5x11) or A3 (11x17) size using the ADF and a Fiery controller, the scanned image becomes white.	
1.15	1	The following problem was fixed. SC326 may occur if the following 3 conditions are met: 1) Multi-copy run 2) Image rotation mode 3) Suffix of the LD control board P/N (B0175291) is before H.	
	2	The following problem was fixed. SC121 may occur if the following 3 conditions are met. 1) Multi-copy run 2) Image rotation mode 3) Suffix of the LD control board P/N (B0175291) is before H.	
	3	Documents received in night mode are stored as substitution reception documents and are not printed out.	
	4	Software modified to so that it can be used with the RSS function.	

3.3 Cut-in Serial Number Information

Ver.	1.104	1.132	1.15
B017-14	1st Mass Pro.	L0861020001	
B017-15	1st Mass Pro.	H6010200001	
B017-17	1st Mass Pro.	H60103XXXX	
B017-22	1st Mass Pro.	H6010100035	
B017-24	1st Mass Pro.	L0861020016	
B017-26	1st Mass Pro.	4E50210001	
B017-27	1st Mass Pro.	H6010100155	
B017-29	1st Mass Pro.	H6010200181	

Reissued: 23-Apr-01

Model: Iris2/Lilac2	Date: 26-Feb-01	No.: RB017006a
---------------------	-----------------	----------------

4. IPU Firmware

4.1 Modification History

Part Number/ Suffix	Version	C.SUM	Production
B0175133D	1.04	E860	1st mass production
E	1.05	2EDD	Refer to 4.3

4.2 Contents of Modification

Version	Contents of Modification		Remarks
1.04	-	This version has been used from the first mass production.	
1.05	1	The separation threshold level for letter and photo was changed.	
	2	The following problem was fixed. When scanning A4 or A3 size using the ADF and Fiery controller, if the scanned image becomes white, at least the Main or IPU program should be upgraded.	

4.3 Cut-in Serial Number Information

Ver.	1.04	1.05
B018-14	1st Mass Pro.	L087012XXXX
B018-15	1st Mass Pro.	H5901100001
B018-17	1st Mass Pro.	H5901100020
B018-22	1st Mass Pro.	H5901100368
B018-24	1st Mass Pro.	L0870120001
B018-26	1st Mass Pro.	4E41200001
B018-27	1st Mass Pro.	H5901100695
B018-29	1st Mass Pro.	H5901101003
B017-14	1st Mass Pro.	L0860120001
B017-15	1st Mass Pro.	H6001100001
B017-17	1st Mass Pro.	H6001100021
B017-22	1st Mass Pro.	H6001100121
B017-24	1st Mass Pro.	L0860120007
B017-26	1st Mass Pro.	4E51100001
B017-27	1st Mass Pro.	H6001100274
B017-29	1st Mass Pro.	H6001100524

Reissued: 23-Apr-01

Model: Iris2/Lilac2	Date: 26-Feb-01	No.: RB017006a
---------------------	-----------------	----------------

5. FCU Firmware

5.1 Modification history

NA model

Part Number/ Suffix	Version	C.SUM	Production
B3835582B	2.17	12C9	1st mass production

EU model

Part Number/ Suffix	Version	C.SUM	Production
B3835584B	2.17	8045	1st mass production

EU2 model

Part Number/ Suffix	Version	C.SUM	Production
B3835585A	2.18	5D8D	1st mass production

EU3 model

Part Number/ Suffix	Version	C.SUM	Production
B3835586A	2.18	1CDF	1st mass production

EU4 model

Part Number/ Suffix	Version	C.SUM	Production
B3835587A	2.18	3818	1st mass production

5.2 Contents of Modification

NA & EU model

Version	Contents of Modification	Remarks
2.17	- This version has been used from the first mass production.	

EU2, EU3 & EU4 model

Version	Contents of Modification	Remarks
2.18	- This version has been used from the first mass production.	

5.3 Cut-in Serial Number Information

Ver.	1.04
B383-17	1st Mass Pro.
B383-27	1st Mass Pro.

Reissued: 01-Jun-01

Model: Iris2/Lilac2		Date: 26-Feb-01	No.: RB017006b
Subject: Firmware Modification History		Prepared by: M. Tsuyuki	
From: Technical Services Dept., GTS Division			
Classification:	<input type="checkbox"/> Troubleshooting <input type="checkbox"/> Part information <input type="checkbox"/> Action required <input type="checkbox"/> Mechanical <input type="checkbox"/> Electrical <input type="checkbox"/> Service manual revision <input type="checkbox"/> Paper path <input type="checkbox"/> Transmit/receive <input type="checkbox"/> Retrofit information <input checked="" type="checkbox"/> Other ()		

Firmware modification history.

Table of contents

	Page
1. Firmware information	2
1.1 Iris2 firmware	2
1.2 Lilac2 firmware	2
1.3 IPU firmware	2
1.4 FCU firmware	2
2. Iris2 firmware	3
2.1 Modification history	3
2.2 Contents of modification	4
2.3 Cut-in serial number information	5
3. Lilac2 firmware	6
3.1 Modification history	6
3.2 Contents of modification	7
3.3 Cut-in serial number information	8
4. IPU firmware	9
4.1 Modification history	9
4.2 Contents of modification	9
4.3 Cut-in serial number information	9
5. FCU firmware	10
5.1 Modification history	10
5.2 Contents of modification	10
5.3 Cut-in serial number information	10

Reissued: 01-Jun-01

Model: Iris2/Lilac2	Date: 26-Feb-01	No.: RB017006b
---------------------	-----------------	----------------

1. Firmware Information

1.1 Iris2 Main Firmware

Type	P/N	Model Code (B018)	Language			
NA	B0185197	14, 15,17	English	French	Spanish	Brazilian
EU	B0185198	22, 24, 26, 27, 29	English	French	German	Italian
EU2	B0185181	Language software	Spanish	Dutch	Danish	Swedish
EU3	B0185182	Language software	Portuguese	Norwegian	Czech	Polish
EU4	B0185183	Language software	Russian	English	-	-

Languages in boldface are the defaults.

1.2 Lilac2 Main Firmware

Type	P/N	Model Code (B017)	Language			
NA	B0175197	14, 15,17	English	French	Spanish	Brazilian
EU	B0175198	22, 24, 26, 27, 29	English	French	German	Italian
EU2	B0175181	Language software	Spanish	Dutch	Danish	Swedish
EU3	B0175182	Language software	Norwegian	Portuguese	Czech	Polish

Languages in boldface are the defaults.

1.3 IPU Firmware

P/N	Model	Code
B0175133	B018	14, 15, 17, 22, 24, 26, 27, 29
	B017	14, 15, 17, 22, 24, 26, 27, 29

1.4 FCU Firmware

Type	P/N	Model Code (B383)	Language		
NA	B3835582	17	English	French	Spanish
EU	B3835584	27	English	French	German
EU2	B3835585	Language software	Spanish	Dutch	Danish
EU3	B3835586	Language software	Portuguese	Norwegian	Czech
EU4	B3835587	Language software	Italian	Swedish	Polish

Languages in boldface are the defaults.

Reissued: 01-Jun-01

Model: Iris2/Lilac2

Date: 26-Feb-01

No.: RB017006b

2. Iris2 Main Firmware

2.1 Modification History

NA Model

Part Number/ Suffix	Version	C.SUM	Production
B0185197G	1.064	9AF7	1st mass production
H	1.072	3546	Refer to 2.3
J	1.09	DED0	
K	1.112	82D3	

EU Model

Part Number/ Suffix	Version	C.SUM	Production
B0185198G	1.064	F5B6	1st mass production
H	1.072	5F3B	Refer to 2.3
J	1.09	F89F	
K	1.112	949B	

EU2 Model

Part Number/ Suffix	Version	C.SUM	Production
B0185181	1.064	76B	1st mass production
A	1.072	5507	Refer to 2.3
B	1.09	678C	
C	1.112	0487	

EU3 Model

Part Number/ Suffix	Version	C.SUM	Production
B0185182	1.064	AC48	1st mass production
A	1.072	C909	Refer to 2.3
B	1.09	E763	
C	1.112	A284	

EU4 Model

Part Number/ Suffix	Version	C.SUM	Production
B0185183	1.064	B0FB	1st mass production
A	1.072	961B	Refer to 2.3
B	1.09	53BC	
C	1.112	6C36	

Reissued: 01-Jun-01

Model: Iris2/Lilac2	Date: 26-Feb-01	No.: RB017006b
---------------------	-----------------	----------------

2.2 Contents of Modification

Version	Contents of Modification		Remarks
1.064	-	This version has been used from the first mass production.	
1.072	1	To remove 12 mm banding within 30 mm from the leading edge, the off timing of the revolver motor was changed.	
	2	To prevent offset image if the following conditions 1 and 2, or 1 and 3 occur at the same time, on/off timing of the separation corona was changed. 1) Low humidity (example: 20°C,10% or 10°C,15%) 2) Full color (multi-copy), longer than A4 (8.5x11) sideways, from the 3rd copy. 3) Making a mono color copy within 1 minute after making full color copies (longer than A4 (8.5x11) sideways.	
	3	Perform the main corona wire cleaning during developer setup (SP2-225-X) to prevent uneven image at installation.	
	4	The following problem was corrected: The LED for the fax key stays red after clearing a duplex jam.	
	5	The following problem was corrected: When scanning A4 (8.5x11) or A3 (11x17) size using the ADF and a Fiery controller, the scanned image becomes white.	
1.09	1	The following problem was fixed. SC326 may occur if the following 3 conditions are met: 1) Multi-copy run 2) Image rotation mode 3) Suffix of the LD control board P/N (B0175291) is before H.	
	2	The following problem was fixed. SC121 may occur if the following 3 conditions are met. 1) Multi-copy run 2) Image rotation mode 3) Suffix of the LD control board P/N (B0175291) is before H.	
	3	Documents received in night mode are stored as substitution reception documents and are not printed out.	
	4	Software modified so that it can be used with the RSS function.	
1.112	1	The following problem was fixed. An SC condition may occur at the 2nd copy when the following conditions are met: 1) More than 2 sheets of A3 originals are set in the DF 2) Black/White or single color mode (Yellow, Magenta or Cyan) 3) Image shift is used (shift to left) 4) A4 paper is selected	
	2	If APS is unable to detect the paper size when the paper bank is not installed, the operation panel display shows the 1st tray for the paper bank as selected (shaded).	
	3	Software modified for compatibility with the RSS function.	

Reissued: 01-Jun-01

Model: Iris2/Lilac2	Date: 26-Feb-01	No.: RB017006b
---------------------	-----------------	----------------

2.3 Cut-in Serial Number Information

Ver.	1.064	1.072	1.09	1.112
B018-14	1st Mass Pro.	L087102XXXX	L0871050001	L0871050001
B018-15	1st Mass Pro.	H59102XXXX	H5910300009	H5910400001
B018-17	1st Mass Pro.	H59102XXXX	H59104XXXX	H59105XXXX
B018-22	1st Mass Pro.	H5910100072	H5910300077	H5910400066
B018-24	1st Mass Pro.	L0871020001	L0871040001	L0871050011
B018-26	1st Mass Pro.	4E40210001	4E40310001	4E40510001
B018-27	1st Mass Pro.	H59102XXXX	H5910300245	H5910400201
B018-29	1st Mass Pro.	H5910200240	H5910300455	H5910500181

Reissued: 01-Jun-01

Model: Iris2/Lilac2

Date: 26-Feb-01

No.: RB017006b

3. Lilac2 Main Firmware

3.1 Modification History

NA Model

Part Number/ Suffix	Version	C.SUM	Production
B0175197G	1.104	6519	1st mass production
H	1.132	963D	Refer to 3.3
J	1.15	4328	
K	1.172	E16B	

EU Model

Part Number/ Suffix	Version	C.SUM	Production
B0175198G	1.104	C6FD	1st mass production
H	1.132	241A	Refer to 3.3
J	1.15	116E	
K	1.172	58A2	

EU2 Model

Part Number/ Suffix	Version	C.SUM	Production
B0175181	1.104	A147	1st mass production
A	1.132	EB53	Refer to 3.3
B	1.15	4501	
C	1.172	E57F	

EU3 Model

Part Number/ Suffix	Version	C.SUM	Production
B0175182	1.104	A5D9	1st mass production
A	1.132	22EA	Refer to 3.3
B	1.15	29DD	
C	1.172	0229	

Reissued: 01-Jun-01

Model: Iris2/Lilac2	Date: 26-Feb-01	No.: RB017006b
---------------------	-----------------	----------------

3.2 Contents of Modification

Version	Contents of Modification	Remarks
1.104	- This version has been used from the first mass production.	
1.132	1 To remove 12 mm banding within 30 mm from the leading edge, the off timing of the revolver motor was changed.	
	2 To prevent offset image if the following conditions 1 and 2, or 1 and 3 occur at the same time, on/off timing of the separation corona was changed. 1) Low humidity (example: 20°C,10% or 10°C,15%) 2) Full color (multi-copy), longer than A4 (8.5x11) sideways, from the 3rd copy. 3) Making a mono color copy within 1 minute after making full color copies (longer than A4 (8.5x11) sideways.	
	3 Perform the main corona wire cleaning during developer setup (SP2-225-X) to prevent uneven image at installation.	
	4 The following problem was corrected: The LED for the fax key stays red after clearing a duplex jam.	
	5 The following problem was corrected: When scanning A4 (8.5x11) or A3 (11x17) size using the ADF and a Fiery controller, the scanned image becomes white.	
1.15	1 The following problem was fixed. SC326 may occur if the following 3 conditions are met: 1) Multi-copy run 2) Image rotation mode 3) Suffix of the LD control board P/N (B0175291) is before H.	
	2 The following problem was fixed. SC121 may occur if the following 3 conditions are met. 1) Multi-copy run 2) Image rotation mode 3) Suffix of the LD control board P/N (B0175291) is before H.	
	3 Documents received in night mode are stored as substitution reception documents and are not printed out.	
	4 Software modified so that it can be used with the RSS function.	
1.172	1 The following problem was fixed. An SC condition may occur at the 2nd copy when the following conditions are met: 1) More than 2 sheets of A3 originals are set in the DF 2) Black/White or single color mode (Yellow, Magenta or Cyan) 3) Image shift is used (shift to left) 4) A4 paper is selected	
	2 If APS is unable to detect the paper size when the paper bank is not installed, the operation panel display shows the 1st tray for the paper bank as selected (shaded).	
	3 Software modified for compatibility with the RSS function.	

Reissued: 01-Jun-01

Model: Iris2/Lilac2	Date: 26-Feb-01	No.: RB017006b
---------------------	-----------------	----------------

3.3 Cut-in Serial Number Information

Ver.	1.104	1.132	1.15	1.172
B017-14	1st Mass Pro.	L0861020001	L0861040001	L0861050001
B017-15	1st Mass Pro.	H6010200001	H6010300008	H6010400007
B017-17	1st Mass Pro.	H60103XXXX	H6010500086	H6010500086
B017-22	1st Mass Pro.	H6010100035	H6010300116	H6010400096
B017-24	1st Mass Pro.	L0861020016	L0861030011	L0861050021
B017-26	1st Mass Pro.	4E50210001	4E50310001	4E50510001
B017-27	1st Mass Pro.	H6010100155	H6010400149	H6010400179
B017-29	1st Mass Pro.	H6010200181	H6010400229	H6010500396

Reissued: 01-Jun-01

Model: Iris2/Lilac2

Date: 26-Feb-01

No.: RB017006b

4. IPU Firmware

4.1 Modification History

Part Number/ Suffix	Version	C.SUM	Production
B0175133D	1.04	E860	1st mass production
E	1.05	2EDD	Refer to 4.3
F	1.06	29C1	

4.2 Contents of Modification

Version	Contents of Modification		Remarks
1.04	-	This version has been used from the first mass production.	
1.05	1	The separation threshold level for letter and photo was changed.	
	2	The following problem was fixed. When scanning A4 or A3 size using the ADF and Fiery controller, the scanned image becomes white. At least the Main or IPU program should be upgraded.	
1.06	1	Optimized scanner registration accuracy for 25-70% reduction mode.	

4.3 Cut-in Serial Number Information

Ver.	1.04	1.05	1.06
B018-14	1st Mass Pro.	L087012XXXX	L0871050001
B018-15	1st Mass Pro.	H5901100001	H5910200001
B018-17	1st Mass Pro.	H5901100020	H5910200033
B018-22	1st Mass Pro.	H5901100368	H5910200065
B018-24	1st Mass Pro.	L0870120001	L0871020001
B018-26	1st Mass Pro.	4E41200001	4E40210001
B018-27	1st Mass Pro.	H5901100695	H5910300245
B018-29	1st Mass Pro.	H5901101003	H5910200240
B017-14	1st Mass Pro.	L0860120001	L0861020006
B017-15	1st Mass Pro.	H6001100001	H6010200001
B017-17	1st Mass Pro.	H6001100021	H6010500086
B017-22	1st Mass Pro.	H6001100121	H6010200050
B017-24	1st Mass Pro.	L0860120007	L0861020016
B017-26	1st Mass Pro.	4E51100001	4E50210001
B017-27	1st Mass Pro.	H6001100274	H6010200104
B017-29	1st Mass Pro.	H6001100524	H6010200181

Reissued: 01-Jun-01

Model: Iris2/Lilac2	Date: 26-Feb-01	No.: RB017006b
---------------------	-----------------	----------------

5. FCU Firmware

5.1 Modification history

NA model

Part Number/ Suffix	Version	C.SUM	Production
B3835582B	2.17	12C9	1st mass production

EU model

Part Number/ Suffix	Version	C.SUM	Production
B3835584B	2.17	8045	1st mass production

EU2 model

Part Number/ Suffix	Version	C.SUM	Production
B3835585A	2.18	5D8D	1st mass production

EU3 model

Part Number/ Suffix	Version	C.SUM	Production
B3835586A	2.18	1CDF	1st mass production

EU4 model

Part Number/ Suffix	Version	C.SUM	Production
B3835587A	2.18	3818	1st mass production

5.2 Contents of Modification

NA & EU model

Version	Contents of Modification	Remarks
2.17	- This version has been used from the first mass production.	

EU2, EU3 & EU4 model

Version	Contents of Modification	Remarks
2.18	- This version has been used from the first mass production.	

5.3 Cut-in Serial Number Information

Ver.	1.04
B383-17	1st Mass Pro.
B383-27	1st Mass Pro.

Model: Iris2/Lilac2		Date: 04-Jun-01	No.: RB017009
Subject: Language in Service Mode		Prepared by: M. Mano	
From: Technical Services Dept., GTS Division			
Classification:	<input checked="" type="checkbox"/> Troubleshooting <input type="checkbox"/> Part information <input type="checkbox"/> Action required <input checked="" type="checkbox"/> Mechanical <input type="checkbox"/> Electrical <input type="checkbox"/> Service manual revision <input checked="" type="checkbox"/> Paper path <input type="checkbox"/> Transmit/receive <input checked="" type="checkbox"/> Retrofit information <input type="checkbox"/> Other ()		

Symptom

In fax service mode, the phrases listed below are not displayed in English.

(English is used as the service mode display language in all models).

Phrase:	EU1	EU2	EU3	EU4
"Enter Number"	English	Spanish	Norwegian	Italian
"Prev."	English	Spanish	Norwegian	Italian
"Next"	English	Spanish	Norwegian	Italian
"Prev Menu"	English	Spanish	Norwegian	Italian
"Printing. Please wait!"	English	Spanish	Norwegian	Italian

Cause

In fax service mode, the machine selects the 1st language for displays that are common to fax SP and UP modes (i.e., the above phrases). The first languages for each version are as follows:

Firmware:	1 st language	2 nd language	3 rd language
EU1	English	French	German
EU2	Spanish	Dutch	Danish
EU3	Norwegian	Portuguese	Czech
EU4	Italian	Swedish	Polish

This is a limitation of fax service mode for this model.

Model: Iris2/Lilac2		Date: 05-Sep-01	No.: RB017010
Subject: SC301,302,360		Prepared by: M. Tsuyuki	
From: Technical Services Dept., GTS Division			
Classification:	<input checked="" type="checkbox"/> Troubleshooting <input type="checkbox"/> Mechanical <input type="checkbox"/> Paper path <input type="checkbox"/> Other ()	<input type="checkbox"/> Part information <input type="checkbox"/> Electrical <input type="checkbox"/> Transmit/receive	<input type="checkbox"/> Action required <input type="checkbox"/> Service manual revision <input type="checkbox"/> Retrofit information

SYMPTOM

SC301, SC302 or SC360 may occur while making copies.

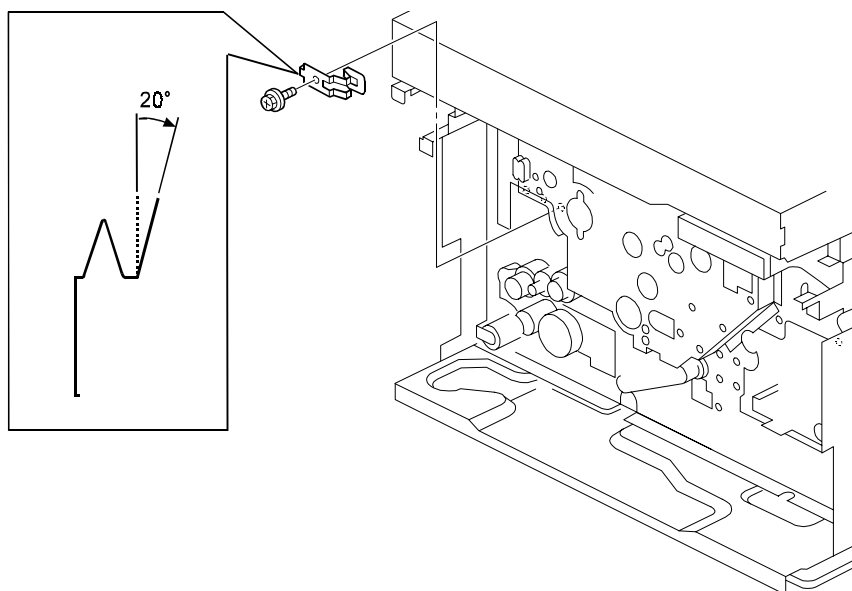
CAUSE

Poor contact between the grounding plate and PCC casing can cause an electrical leak and/or noise.

SOLUTION

Bend the portion of the grounding plate shown below approximately 20° ($\pm 5^\circ$) to optimize the contact between grounding plate and PCC casing.

Note: When bending, be sure to keep the portion flat and untwisted.



PRODUCTION

The grounding plate was modified as shown above and applied to the production line from May, 2001.

Reissued: 26-Sep-01

Model: Iris2/Lilac2		Date: 26-Feb-01	No.: RB017006c
Subject: Firmware Modification History		Prepared by: M. Tsuyuki	
From: Technical Services Dept., GTS Division			
Classification:	<input type="checkbox"/> Troubleshooting <input type="checkbox"/> Part information <input type="checkbox"/> Action required <input type="checkbox"/> Mechanical <input type="checkbox"/> Electrical <input type="checkbox"/> Service manual revision <input type="checkbox"/> Paper path <input type="checkbox"/> Transmit/receive <input type="checkbox"/> Retrofit information <input checked="" type="checkbox"/> Other ()		

Firmware modification history.

Table of Contents

	Page
1. Firmware information	2
1.1 Iris 2 firmware	2
1.2 Lilac 2 firmware	2
1.3 IPU firmware	2
1.4 FCU firmware	2
2. Iris 2 firmware	3
2.1 Modification history	3
2.2 Contents of modification	4
2.3 Cut-in serial number information	4
3. Lilac 2 firmware	5
3.1 Modification history	5
3.2 Contents of modification	6
3.3 Cut-in serial number information	6
4. IPU firmware	7
4.1 Modification history	7
4.2 Contents of modification	7
4.3 Cut-in serial number information	7
5. FCU firmware	8
5.1 Modification history	8
5.2 Contents of modification	8
5.3 Cut-in serial number information	8

Reissued: 26-Sep-01

Model: Iris2/Lilac2	Date: 26-Feb-01	No.: RB017006c
---------------------	-----------------	----------------

1. Firmware Information

1.1 Iris 2 Main Firmware

Type	P/N	Model Code (B018)	Language			
NA	B0185197	14, 15,17	English	French	Spanish	Brazilian
EU	B0185198	22, 24, 26, 27, 29	English	French	German	Italian
EU2	B0185181	Language software	Spanish	Dutch	Danish	Swedish
EU3	B0185182	Language software	Portuguese	Norwegian	Czech	Polish
EU4	B0185183	Language software	Russian	English	-	-

Languages in boldface are the defaults.

1.2 Lilac2 Main Firmware

Type	P/N	Model Code (B017)	Language			
NA	B0175197	14, 15,17	English	French	Spanish	Brazilian
EU	B0175198	22, 24, 26, 27, 29	English	French	German	Italian
EU2	B0175181	Language software	Spanish	Dutch	Danish	Swedish
EU3	B0175182	Language software	Norwegian	Portuguese	Czech	Polish

Languages in boldface are the defaults.

1.3 IPU Firmware

P/N	Model	Code
B0175133	B018	14, 15, 17, 22, 24, 26, 27, 29
	B017	14, 15, 17, 22, 24, 26, 27, 29

1.4 FCU Firmware

Type	P/N	Model Code (B383)	Language		
NA	B3835582	17	English	French	Spanish
EU	B3835584	27	English	French	German
EU2	B3835585	Language software	Spanish	Dutch	Danish
EU3	B3835586	Language software	Portuguese	Norwegian	Czech
EU4	B3835587	Language software	Italian	Swedish	Polish

Languages in boldface are the defaults.

Reissued: 26-Sep-01

Model: Iris2/Lilac2

Date: 26-Feb-01

No.: RB017006c

2. Iris 2 Main Firmware

2.1 Modification History

NA Model

Part Number/ Suffix	Version	C.SUM	Production
B0185197G	1.064	9AF7	1st mass production
H	1.072	3546	Refer to 2.3
J	1.09	DED0	
K	1.112	82D3	

EU Model

Part Number/ Suffix	Version	C.SUM	Production
B0185198G	1.064	F5B6	1st mass production
H	1.072	5F3B	Refer to 2.3
J	1.09	F89F	
K	1.112	949B	

EU2 Model

Part Number/ Suffix	Version	C.SUM	Production
B0185181	1.064	76B	1st mass production
A	1.072	5507	Refer to 2.3
B	1.09	678C	
C	1.112	0487	

EU3 Model

Part Number/ Suffix	Version	C.SUM	Production
B0185182	1.064	AC48	1st mass production
A	1.072	C909	Refer to 2.3
B	1.09	E763	
C	1.112	A284	

EU4 Model

Part Number/ Suffix	Version	C.SUM	Production
B0185183	1.064	B0FB	1st mass production
A	1.072	961B	Refer to 2.3
B	1.09	53BC	
C	1.112	6C36	

Reissued: 26-Sep-01

Model: Iris2/Lilac2	Date: 26-Feb-01	No.: RB017006c
---------------------	-----------------	----------------

2.2 Contents of Modification

Version	Symptom Corrected	Remarks
1.064	- This version has been used from the first mass production run.	
1.072	1 The off timing of the revolver motor was changed to eliminate 12-mm banding in the area within 30 mm of the leading edge.	
	2 The on/off timing of the separation corona was changed to eliminate offset image that occurs under conditions 1+2 together (from the 3 rd copy), or under conditions 1+3 together: 1) Low humidity (e.g. 20°C/10% or 10°C/15%) 2) Full color (multi-copy), longer than A4 (8.5x11) sideways. 3) Mono-color copy within 1 min of making full color copies longer than A4 (8.5x11) sideways.	
	3 Main corona wire cleaning performed during developer setup (SP2-225-X) to eliminate uneven images at the time of installation.	
	4 The LED for the Fax key remains red even after clearing a duplex jam.	
	5 Scanned image is blank when scanning A4 (8.5x11) or A3 (11x17) using the ADF and a Fiery controller.	
1.09	1 SC326 may occur if the following 3 conditions are satisfied: 1) Multi-copy run 2) Image rotation mode 3) Suffix of the LD control board P/N (B0175291) is before H.	
	2 SC121 may occur if the following 3 conditions are satisfied: 1) Multi-copy run 2) Image rotation mode 3) Suffix of the LD control board P/N (B0175291) is before H.	
	3 Documents received in night mode are stored as Substitute Reception documents and are not printed out.	
	4 Software modified so that it can be used with the RSS function.	
1.112	1 An SC condition may occur at the 2nd copy when the following conditions are met: 1) More than 2 sheets of A3 originals are set in the DF 2) Black/White or single color mode (Yellow, Magenta or Cyan) 3) Image shift is used (shift to left) 4) A4 paper is selected	
	2 If APS is unable to detect the paper size when the paper bank is not installed, the operation panel display shows the 1st tray for the paper bank as selected (shaded).	
	3 An RSS function was not operating properly.	

2.3 Cut-in Serial Number Information

Ver.	1.064	1.072	1.09	1.112
B018-14	1st Mass Pro.	L087102XXXX	L0871050001	L0871050001
B018-15	1st Mass Pro.	H59102XXXX	H5910300009	H5910400001
B018-17	1st Mass Pro.	H59102XXXX	H59104XXXX	H59105XXXX
B018-22	1st Mass Pro.	H5910100072	H5910300077	H5910400066
B018-24	1st Mass Pro.	L0871020001	L0871040001	L0871050011
B018-26	1st Mass Pro.	4E40210001	4E40310001	4E40510001
B018-27	1st Mass Pro.	H59102XXXX	H5910300245	H5910400201
B018-29	1st Mass Pro.	H5910200240	H5910300455	H5910500181

Reissued: 26-Sep-01

Model: Iris2/Lilac2

Date: 26-Feb-01

No.: RB017006c

3. Lilac 2 Main Firmware

3.1 Modification History

NA Model

Part Number/ Suffix	Version	C.SUM	Production
B0175197G	1.104	6519	1st mass production
H	1.132	963D	Refer to 3.3
J	1.15	4328	
K	1.172	E16B	

EU Model

Part Number/ Suffix	Version	C.SUM	Production
B0175198G	1.104	C6FD	1st mass production
H	1.132	241A	Refer to 3.3
J	1.15	116E	
K	1.172	58A2	

EU2 Model

Part Number/ Suffix	Version	C.SUM	Production
B0175181	1.104	A147	1st mass production
A	1.132	EB53	Refer to 3.3
B	1.15	4501	
C	1.172	E57F	

EU3 Model

Part Number/ Suffix	Version	C.SUM	Production
B0175182	1.104	A5D9	1st mass production
A	1.132	22EA	Refer to 3.3
B	1.15	29DD	
C	1.172	0229	

Reissued: 26-Sep-01

Model: Iris2/Lilac2	Date: 26-Feb-01	No.: RB017006c
---------------------	-----------------	----------------

3.2 Contents of Modification

Version	Symptom Corrected	Remarks
1.104	- This version has been used from the first mass production run.	
1.132	1 To remove 12 mm banding within 30 mm from the leading edge, the off timing of the revolver motor was changed.	
	2 The on/off timing of the separation corona was changed to eliminate offset image that occurs under conditions 1+2 together (from the 3 rd copy), or under conditions 1+3 together: 1) Low humidity (e.g. 20°C/10% or 10°C/15%) 2) Full color (multi-copy), longer than A4 (8.5x11) sideways. 3) Mono-color copy within 1 min of making full color copies longer than A4 (8.5x11) sideways.	
	3 Main corona wire cleaning performed during developer setup (SP2-225-X) to eliminate uneven images at the time of installation.	
	4 The LED for the Fax key remains red even after clearing a duplex jam.	
	5 Scanned image is blank when scanning A4 (8.5x11) or A3 (11x17) using the ADF and a Fiery controller.	
1.15	1 SC326 may occur if the following 3 conditions are satisfied: 4) Multi-copy run 5) Image rotation mode 6) Suffix of the LD control board P/N (B0175291) is before H.	
	2 SC121 may occur if the following 3 conditions are satisfied: 4) Multi-copy run 5) Image rotation mode 6) Suffix of the LD control board P/N (B0175291) is before H.	
	3 Documents received in night mode are stored as Substitute Reception documents and are not printed out.	
	4 Software modified so that it can be used with the RSS function.	
1.172	1 An SC condition may occur at the 2nd copy when the following conditions are met: 5) More than 2 sheets of A3 originals are set in the DF 6) Black/White or single color mode (Yellow, Magenta or Cyan) 7) Image shift is used (shift to left) 8) A4 paper is selected	
	2 If APS is unable to detect the paper size when the paper bank is not installed, the operation panel display shows the 1st tray for the paper bank as selected (shaded).	
	3 An RSS function was not operating properly.	

3.3 Cut-in Serial Number Information

Ver.	1.104	1.132	1.15	1.172
B017-14	1st Mass Pro.	L0861020001	L0861040001	L0861050001
B017-15	1st Mass Pro.	H6010200001	H6010300008	H6010400007
B017-17	1st Mass Pro.	H60103XXXX	H6010500086	H6010500086
B017-22	1st Mass Pro.	H6010100035	H6010300116	H6010400096
B017-24	1st Mass Pro.	L0861020016	L0861030011	L0861050021
B017-26	1st Mass Pro.	4E50210001	4E50310001	4E50510001
B017-27	1st Mass Pro.	H6010100155	H6010400149	H6010400179
B017-29	1st Mass Pro.	H6010200181	H6010400229	H6010500396

Reissued: 26-Sep-01

Model: Iris2/Lilac2	Date: 26-Feb-01	No.: RB017006c
---------------------	-----------------	----------------

4. IPU Firmware

4.1 Modification History

Part Number/ Suffix	Version	C.SUM	Production
B0175133D	1.04	E860	1st mass production
E	1.05	2EDD	Refer to 4.3
F	1.06	29C1	
G	1.07	0C00	

4.2 Contents of Modification

Version	Symptom Corrected	Remarks
1.04	- This version has been used from the first mass production run.	
1.05	1 Spec change: The separation threshold level for letter and photo was changed.	
	2 Scanned image is blank when scanning A4 (8.5x11) or A3 (11x17) using the ADF and a Fiery controller. (Note: It is necessary to update the IPU or Main firmware).	
1.06	1 Optimized scanner registration accuracy for 25-70% reduction mode.	
1.07	1 The machine does not detect A5L or 5 1/2" X 8 1/2"L originals in APS mode, even if SP 4-303 (APS Minimum Size Setting) is set to 1.	

4.3 Cut-in Serial Number Information

Ver.	1.04	1.05	1.06	1.07
B018-14	1st Mass Pro.	L087012XXXX	L0871050001	L0871070001
B018-15	1st Mass Pro.	H5901100001	H5910200001	H5910700001
B018-17	1st Mass Pro.	H5901100020	H5910200033	H5910800035
B018-22	1st Mass Pro.	H5901100368	H5910200065	H5910700036
B018-24	1st Mass Pro.	L0870120001	L0871020001	L0871070011
B018-26	1st Mass Pro.	4E41200001	4E40210001	4E5071XXXX
B018-27	1st Mass Pro.	H5901100695	H5910300245	H5910700188
B018-29	1st Mass Pro.	H5901101003	H5910200240	H5910700278
B017-14	1st Mass Pro.	L0860120001	L0861020006	L0861070001
B017-15	1st Mass Pro.	H6001100001	H6010200001	H6010600106
B017-17	1st Mass Pro.	H6001100021	H6010500086	H6010700087
B017-22	1st Mass Pro.	H6001100121	H6010200050	H6010600202
B017-24	1st Mass Pro.	L0860120007	L0861020016	L0861070036
B017-26	1st Mass Pro.	4E51100001	4E50210001	4E50710001
B017-27	1st Mass Pro.	H6001100274	H6010200104	H6010600318
B017-29	1st Mass Pro.	H6001100524	H6010200181	H6010700322

Reissued: 26-Sep-01

Model: Iris2/Lilac2	Date: 26-Feb-01	No.: RB017006c
---------------------	-----------------	----------------

5. FCU Firmware

5.1 Modification history

NA model

Part Number/ Suffix	Version	C.SUM	Production
B3835582B	2.17	12C9	1st mass production

EU model

Part Number/ Suffix	Version	C.SUM	Production
B3835584B	2.17	8045	1st mass production

EU2 model

Part Number/ Suffix	Version	C.SUM	Production
B3835585A	2.18	5D8D	1st mass production

EU3 model

Part Number/ Suffix	Version	C.SUM	Production
B3835586A	2.18	1CDF	1st mass production

EU4 model

Part Number/ Suffix	Version	C.SUM	Production
B3835587A	2.18	3818	1st mass production

5.2 Contents of Modification

NA & EU model

Version	Symptom Corrected	Remarks
2.17	- This version has been used from the first mass production run.	

EU2, EU3 & EU4 model

Version	Symptom Corrected	Remarks
2.18	- This version has been used from the first mass production run.	

5.3 Cut-in Serial Number Information

Ver.	1.04
B383-17	1st Mass Pro.
B383-27	1st Mass Pro.

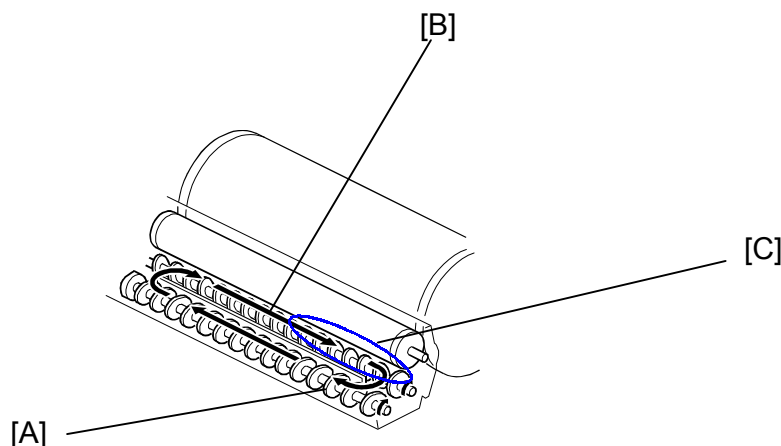
Model: Iris2/Lilac2		Date: 15-Oct-02	No.: RB017011
Subject: Image Density is lower in operator side		Prepared by: H.Matsui	
From: Technical Services sec. Service Planning Dept.			
Classification:	<input checked="" type="checkbox"/> Troubleshooting	<input type="checkbox"/> Part information	<input type="checkbox"/> Action required
	<input type="checkbox"/> Mechanical	<input type="checkbox"/> Electrical	<input type="checkbox"/> Service manual revision
	<input type="checkbox"/> Paper path	<input type="checkbox"/> Transmit/receive	<input type="checkbox"/> Retrofit information
	<input type="checkbox"/> Other ()		

Symptom:

Image density on the operator side is lower than on the non-operator side.

Cause:

1. The toner weight percent around the area [C] inside the development unit decreases during continuous development of images containing a percent of solid image areas (copier/printer).
2. The developer's chargeability decreases prematurely.



[A]: Toner is supplied from the toner hopper around this area.

[B]: During this toner flow (non-operator side to operator side), toner is consumed for image development.

Troubleshooting:**IMPORTANT NOTES BEFORE BEGINNING THIS TROUBLESHOOTING**

1. This troubleshooting is effective only for cases where the image density on the **operator side** is lower than on the non-operator side. Never perform this procedure for the reverse case.
2. This troubleshooting procedure forcibly increases the toner weight percent in the developer, making it slightly easier for toner scattering or dirty background to occur. Therefore, as mentioned above, only perform this troubleshooting on machines when the image density on the **operator side** is lower than on the non-operator side.
3. Be sure to replace the developer at every lifetime cycle (60kD for K, 45kD for C, M, Y). This is to ensure that the developer properties remain within normal operating parameters.

PROCEDURE A: Check which development color (C, M, Y or K) has this symptom.

Step A-1: Enter SP5-955-018, and input a setting of "6" (SOLID).

Step A-2: Enter SP5-955-001, and change the setting from 128 → 85.

Step A-3: Press the "Interrupt Key", then take single-color copies of solid images for each color (C, M, Y and K) onto A4/LT sideways.

Step A-4: Check which development color(s) show the symptom.

PROCEDURE B: Perform the following procedure **ONLY** for the development color(s) you identified as showing the symptom in PROCEDURE A above.

Step B-1: Replace the developer for this color if its development counter has reached over 40kD since the last developer replacement. Then, repeat PROCEDURE A again. If the symptom has been fixed, the troubleshooting is complete.

However if it is not fixed, go on to Step B-2 below.

Model: Iris2/Lilac2

Date: 15-Oct-02

No.: RB017011

Step B-2: Change SP2-203 (ID sensor dev. Potential correction value) to a setting of:
current value –10, only for the color(s) that show the symptom.

For K: SP2-203-005

For C: SP2-203-006

For M: SP2-203-007

For Y: SP2-203-008

NOTE: The lowest setting that can be input is –20.

PROCEDURE C: After completing PROCEDURE B above for the color(s) that show the symptom:

Step C-1: Enter SP5-955-018, and input a setting of “14” (Grid Scanner Image).

Step C-2: Enter SP5-955-001, and input a setting of “128”.

Step C-3: Press the “Interrupt Key”, then make 30 full-color copies of the Grid Scanner Image test pattern onto A4/LT sideways.

NOTE: If “Toner Near End” appears during printing, turn the main switch Off and On without replacing the toner cartridge. Then, continue printing the test patterns.

PROCEDURE D: Perform Forced Process Control Self Check (SP3-126).

PROCEDURE E: Perform ACC both for copier and printer modes.

PROCEDURE F: Perform “PROCEDURE A” again to check whether the symptom has been fixed or minimized. If there is no improvement, perform PROCEDURES B, C, D and E again.

Model: Iris2/Lilac2

Date: 15-Oct-02

No.: RB017011

PROCEDURE G: If no improvement can be seen even after performing all of the above:

Step G-1: Return the setting of SP2-203 **to the default value of “0”** for the color(s) which show the symptom.

For K: SP2-203-005

For C: SP2-203-006

For M: SP2-203-007

For Y: SP2-203-008

Step G-2: Replace the development unit (installing new developer as well) for the color(s) which show the symptom.