

Model: Mojito-C2		Date: 2-Jun-03	No.: RB098001
Subject: BICU firmware Modification History		Prepared by: F.Noguchi	
From: 2nd Tech. Support Sec. Service Support Dept.			
Classification:	<input type="checkbox"/> Troubleshooting <input type="checkbox"/> Part information <input checked="" type="checkbox"/> Action required <input type="checkbox"/> Mechanical <input type="checkbox"/> Electrical <input type="checkbox"/> Service manual revision <input type="checkbox"/> Paper path <input type="checkbox"/> Transmit/receive <input type="checkbox"/> Retrofit information <input checked="" type="checkbox"/> Other (      )		

The following is for the Mojito-C2 only, and is a reissue of RTB #RA293028c since a request from the field was received to issue RTBs for the C1 and C2 separately. Mojito-C2 RTBs will contain the prefix RB098.

In addition, the items in bold/italics below are corrections of errors in the original RA293028c bulletin.

1. Page: 2/4

Version 0.17: B0987553**D** → B0987553**E**

B0987563**D** → B0987563**E**

2. Page: 3/4

Version 0.16: B0987553**C** → B0987553**D**

B0987563**C** → B0987563**D**

3. Page: 4/4

Information (color and part number) for the new and old rollers was reversed.

This is to inform about modification histories of the BICU firmware. As there four types of firmware, use the appropriate one for each customer.

Destination	Part Number	Model Codes/Languages
America	B098 7553	B098 -17
		US English, French, Spanish
Eu1_Asia	B098 7563	B098 -19, -22, -26, -27, -28, -29, -69
		English, French, Spanish, German, Italian, Dutch
Eu2	B098 7564	B098 -22, -26, -27
		English, German, Swedish, Norwegian, Danish, Finnish
Eu3	B098 7565	B098 -22, -26, -27
		English, German, Portuguese, Polish, Hungarian, Czech

Destination/ Part Number	America B098 7553	Eu1_Asia B098 7563	Eu2 B098 7564	Eu3 B098 7565	RTB issue date
Version/Suffix					
0.14	B	B	-	-	16-Dec-02 (MA293028a)
0.15	C	C	A	A	16-Dec-02 (MA293028a)
0.16	D	D	B	B	17-Mar-03 (MA293028b)
0.17	E	E	C	C	09-May-03 (MA293028c)

Model: Mojito-C2

Date: 2-Jun-03

No.: RB098001

**< Version 0.17 >**

Destination/	America	Eu1 Asia	Eu2	Eu3
Part Number	<b>B098 7553E</b>	<b>B098 7563E</b>	B098 7564C	B098 7565C
Check SUM	830B	F91C	2D15	4B53

**1. "Paper in the 1st tray is moving from left to right" Display Error**
**<Symptom>**

Sometimes the copy job resumes before the left tray end fence reaches its home position, and the "Paper in the 1st tray is moving from left to right" display does not clear until the job is completed. During the job, it is possible to pull out the left tandem tray, even while the message is displayed.

**<Solution>**

Software modified so that the copy job begins when the paper end clear signal is received from the tray (same as the current operation) and the display message is cleared as soon as the left tray end fence reaches its home position.

Model: Mojito-C2

Date: 2-Jun-03

No.: RB098001

**< Version 0.16 >**

Destination/	America	Eu1_Asia	Eu2	Eu3
Part Number	<b>B098 7553D</b>	<b>B098 7563D</b>	B098 7564B	B098 7565B
Check SUM	5BAB	F6DA	AD2C	4DE8

**1. SP mode change due to counter specification change**

Due to a specification change for the counter (for details, refer to RTB No. Rgene013a), the following SP modes have been changed.

**SP5849: Installation Date**

When the electrical counter **reaches a value of 20**, the machine recognizes this as the installation date and stores this date in the NVRAM

**SP7825: Total Counter Reset**

After making test samples at installation, the (positive) counter value cannot be set back to "0" with SP mode.

**2. Added the "Edge to Edge Print" function key**

As per a field request, the "Edge to Edge Print" function has been added to the Printer SP – Settings.

**Note:** To enable this function, it is necessary to:

1. Use printer firmware ver.0.58 or newer.
2. Change SP2101 (Printing Erase Margin) to a value of 0 mm.

**Cut-in Serial number**

MODEL NAME	V/ Hz	DESTINATION	CODE	SERIAL NO.
Ricoh Aficio 1055 Savin 2555 Gestetner 5502 Lanier LD055	120/ 60	USA, Canada, S. America	B098-17	J5330300366
Ricoh Aficio 1055	120/60	Taiwan	B098-19	From 1st production
Gestetner 5502 nashuatec 5505 Rex Rotary 5508	120/ 60	Europe, etc.	B098-22	J5330300203
Lanier LD055	220, 230, 240/ 50, 60	Europe	B098-24	L1333030001
infotec IS2055	220, 230, 240/ 50, 60	Europe, etc.	B098-26	2Q40330001
Ricoh Aficio 1055	220, 230, 240/ 50, 60	Europe, etc.	B098-27	J5330300001
Ricoh Aficio 1055	230/50	Korea	B098-28	From 1st production
Ricoh Aficio 1055	220/ 50, 60	Asia, Oceania	B098-29	J5330200224
Ricoh Aficio 1055	230/50	China	B098-69	J5330300395

Model: Mojito-C2

Date: 2-Jun-03

No.: RB098001

**< Version 0.15 >**

Destination/	America	Eu1_Asia	Eu2	Eu3
Part Number	B098 7553C	B098 7563C	B098 7564A	B098 7565A
Check SUM	A8B0	664E	8C71	5407

**1. Target yield for the PM parts**

The target yields for the following PM parts have been increased from 300K to 1,000K.

**Note:**

- 1) Machines containing version 0.15 at arrival have been fitted with the new PM parts.
- 2) At PM parts replacement, be sure to confirm the target yield setting and change it as follows if necessary, depending on whether the part to be installed is old or new.

Color of the roller

New type: **Light blue**

Old type: **Gray**

No.	Description	New Type (Yield: 1,000K)	Old Type (Yield: 300K)
		Part Number	Part Number
004	Feed Roller – Tray 1	<b>AF03 1080</b>	<b>AF03 1040</b>
005	Pick-up Roller – Tray 1	<b>AF03 0080</b>	<b>AF03 0040</b>
006	Separation Roller – Tray 1	<b>AF03 2080</b>	<b>AF03 2040</b>
007	Feed Roller – Tray 2	<b>AF03 1080</b>	<b>AF03 1040</b>
008	Pick-up Roller – Tray 2	<b>AF03 0080</b>	<b>AF03 0040</b>
009	Separation Roller – Tray 2	<b>AF03 2080</b>	<b>AF03 2040</b>
010	Feed Roller – Tray 3	<b>AF03 1080</b>	<b>AF03 1040</b>
011	Pick-up Roller – Tray 3	<b>AF03 0080</b>	<b>AF03 0040</b>
012	Separation Roller – Tray 3	<b>AF03 2080</b>	<b>AF03 2040</b>
013	Feed Roller – Tray 4	<b>AF03 1080</b>	<b>AF03 1040</b>
014	Pick-up Roller – Tray	<b>AF03 0080</b>	<b>AF03 0040</b>
015	4Separation Roller – Tray 4	<b>AF03 2080</b>	<b>AF03 2040</b>
017	Feed Roller – LCT	<b>AF03 1081</b>	<b>AF03 1064</b>
018	Pick-up Roller – LCT	<b>AF03 0080</b>	<b>AF03 0050</b>
019	Separation Roller – LCT	<b>AF03 2080</b>	<b>AF03 2050</b>
020	Feed Roller – Bypass Feed	<b>AF03 1081</b>	<b>AF03 1041</b>
021	Pick-up Roller – Bypass Feed	<b>AF03 0080</b>	<b>AF03 0041</b>
022	Separation Roller – Bypass Feed	<b>AF03 2080</b>	<b>AF03 2041</b>

**< Version 0.14 >**

Destination/	America	Eu1_Asia	Eu2	Eu3
Part Number	B098 7553B	B098 7563B	B098 7564	B098 7565
Check SUM	BFDF	85AE	DEBB	D720

**Note:** This is information only, as version 0.14 was used from the first lot of mass production.

Model: Mojito-C2	Date:8-Apr-09	No.: RB098002
------------------	---------------	---------------

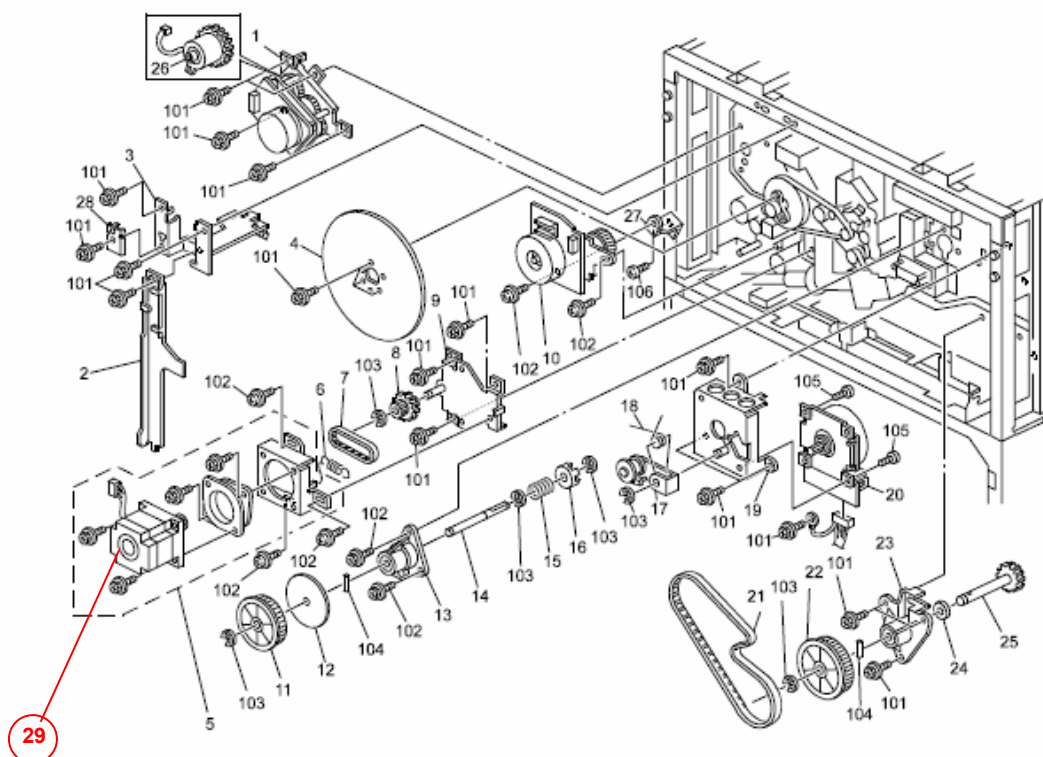
Subject: STEPPER MOTOR:REGISTRATION:ASS'Y		Prepared by: T.Toriumi	
From: 2nd Tech. Support Sec. Service Support Dept.			
Classification:	<input type="checkbox"/> Troubleshooting <input type="checkbox"/> Mechanical <input type="checkbox"/> Paper path <input type="checkbox"/> Other (      )	<input checked="" type="checkbox"/> Part information <input type="checkbox"/> Electrical <input type="checkbox"/> Transmit/receive	<input type="checkbox"/> Action required <input type="checkbox"/> Service manual revision <input type="checkbox"/> Retrofit information

## 53. DRIVE SECTION 1 (A292/A293/B098)

Old part number	New part number	Description	Q'ty	Int	Page	Index	Note
-	AX060151	STEPPER MOTOR: REGISTRATION	1	-	119	29	New Index
AX060151	B1401037	STEPPER MOTOR: REGISTRATION	1	O/O	119	29	New index

**Note:** The following part (index#29) was registered as a service part.

### 53.DRIVE SECTION 1 (A292/A293/B098)



Model: M-C2	Date: 19-Nov-10	No.: RB098003
-------------	-----------------	---------------

Subject: Defective service part - Hot roller		Prepared by: K. Yamamoto	
From: 1st Overseas Tech Support Sec., 1st PQM Dept.			
Classification:	<input checked="" type="checkbox"/> Troubleshooting	<input type="checkbox"/> Part information	<input type="checkbox"/> Action required
	<input type="checkbox"/> Mechanical	<input type="checkbox"/> Electrical	<input type="checkbox"/> Service manual revision
	<input type="checkbox"/> Paper path	<input type="checkbox"/> Transmit/receive	<input type="checkbox"/> Retrofit information
	<input type="checkbox"/> Other (      )		

This RTB applies to the **N.A.**, **China**, and **Asia Pacific** models only.

## SYMPTOM

The ring stopper cannot be attached to the hot roller (AE011073) when the roller is replaced.



## CAUSE

The edges of the shaft section on some hot rollers in service parts stock were not ground to a 90-degree angle.

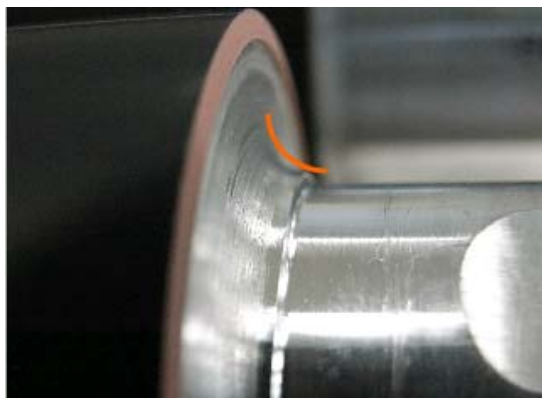
See photos and affected lot numbers below.

Model: M-C2

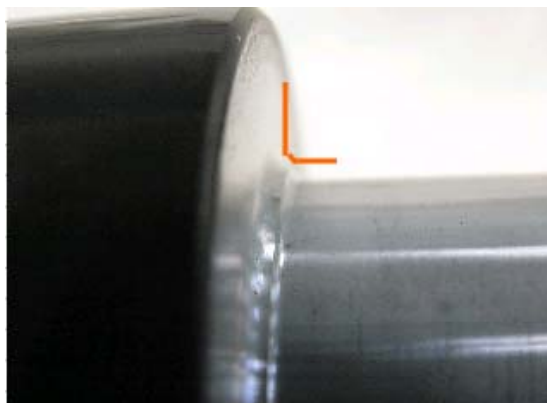
Date: 19-Nov-10

No.: RB098003

Incorrect:



Correct:



## SOLUTION

If the symptom occurs, and the lot number of the hot roller is in the following range, replace the roller.

Affected lot numbers: **A110510 – A310810** (May 11 and August 31)

**Note:** The production date can be determined by the lot number, as shown below.

Example: Lot number “A010710” indicates that the part was produced on July 1, 2010.

