

Model: Adonis-C1 (Scanner Option)		Date: 05-Apr-00	No.: RA283001
Subject: Service Manual Correction		Prepared by: K. Takagi	
From: Technical Services Dept., GTS Division			
Classification:	<input type="checkbox"/> Troubleshooting <input type="checkbox"/> Part information <input type="checkbox"/> Action required <input type="checkbox"/> Mechanical <input type="checkbox"/> Electrical <input checked="" type="checkbox"/> Service manual revision <input type="checkbox"/> Paper path <input type="checkbox"/> Transmit/receive <input type="checkbox"/> Retrofit information <input type="checkbox"/> Other (      )		

Please add the following SP mode in your Adonis-C1 Scanner Kit service manual, on page 4-2.

SP mode No. 017 has been added so that the scanning margin can be adjusted. This was made available with the release of scanner controller firmware version 4.0.0.

No		Function	Settings
017	Trimming	Adjusts the scanning margins for both the main and sub scan directions.	0 ~ 5 1 mm / step
		<i>The larger the value, the wider the margin.</i>	<b>0</b>

Model: Adonis-C1		Date: 26-Apr-00	No.: RA283002
Subject: ROM History (Adonis-C Fax Option)		Prepared by: M. Mano	
From: Technical Services Dept., GTS Division			
Classification:	<input type="checkbox"/> Troubleshooting <input type="checkbox"/> Part information <input type="checkbox"/> Action required <input type="checkbox"/> Mechanical <input type="checkbox"/> Electrical <input type="checkbox"/> Service manual revision <input type="checkbox"/> Paper path <input type="checkbox"/> Transmit/receive <input checked="" type="checkbox"/> Retrofit information <input type="checkbox"/> Other (      )		

Firmware history for the Adonis-C Fax Option

A2855581	File No. (A285Uxxx)	Version	C.SUM	Production
A	001	16.01	91C6	1st Mass Prod.
B	002	18.00	ED65	April Prod. '00

Symptoms Corrected	USA
<i>When sending an original wider than the maximum paper width of the receiving machine (Auto-Reduction OFF / JBIG compression), the machine cuts the image to the smaller size but sends the left-most area of the image instead of the central area.</i>	B
<i>Even though the following bit switch settings should disable the File Retention function, the machine retains files for 24 hours: User Parameter switch 24 (swusr_18): (bit1, bit0) = (1, 0)</i>	B
<i>When bit 4 of Communication switch 07 is 1 (Fallback from G4 to G3 when G4 communication fails on the ISDN B-channel is enabled) and a G4 communication error occurs on the ISDN B-channel (ADF mode), the machine falls back to G3 and resumes transmission from the second page. This is because the first page has already fed out from the ADF.</i>	B

A2855581	A874-17
B	TBA~

Model: Adonis-C1		Date: 14-Jun-00	No.: RA283003
Subject: Service Manual Correction		Prepared by: S. Tomoe	
From: Technical Services Dept., GTS Division			
Classification:	<input type="checkbox"/> Troubleshooting	<input type="checkbox"/> Part information	<input type="checkbox"/> Action required
	<input type="checkbox"/> Mechanical	<input type="checkbox"/> Electrical	<input type="checkbox"/> Service manual revision
	<input type="checkbox"/> Paper path	<input type="checkbox"/> Transmit/receive	<input type="checkbox"/> Retrofit information
	<input checked="" type="checkbox"/> Other ( )		

Please correct your Service Manuals as follows.

## 1. Restricted Access Control for Key Counter

This function can only be selected in UP Mode.

### 1) Key Counter Installation [Section 3.13], Step 11 (Page 3-45)

- Incorrect -

11. Change the value of SP5-401-2 to 1.

**NOTE:** The key counter function is available for fax and printer modes by changing the following SP mode

- SP5-401-52 (Fax mode)
- SP5-401-62 (Printer mode)

- Correct -

11. In UP mode, select: 1. System – 19. Management Setting – 5. Key counter. Select “Yes”.

**NOTE:** The key counter function is also available for Fax and Printer Modes. The procedure to enable the counter is the same.

### 2) SP Mode Table (Page 4-23)

Please delete all columns for SP5-401. This SP mode is not used.

## 2. Laser Beam Pitch Adjustment

The procedure for printing out the laser pitch adjustment test pattern has been changed.

### 1) Laser Beam Pitch Adjustment [Section 6.2.3]

- Incorrect -

- SP2-902-2, no.12: IPU Test Pattern - Cross Stitch – 400 dpi
- SP2-902-2, no.13: IPU Test Pattern - Cross Stitch – 600 dpi

4. Print the 400 dpi test pattern onto A3 (11” x 17”) paper using SP2-902-1 no.12.

- Correct -

- SP2-110, no. 1: Image Resolution Change – 400 dpi
- SP2-110, no. 8: Image Resolution Change – 600 dpi
- SP2-902-3, No.16: Test Pattern Printing – Cross Stitch

4. To print out the 400 dpi test pattern onto A3 (11" x 17"), change the value of SP2-110 to 1 and print out the cross stitch test pattern using SP2-902-3 no.16.

**NOTE:** For 600 dpi, change the value of SP2-110 to 8 before printing out the test pattern.

## 2) SP Mode Table (Page 4-5)

Mode No.			Function	Setting
Class 1 and 2	Class 3			
2-110		Image Resolution Change	Select the image resolution.	0 ~ 18 1/Step 0: 400 dpi 8: 600 dpi
			<b>Select 0 or 8 only.</b>	

## 3. SP2-971 (Toner Sensor Count)

The following SP mode should be added.

Mode No.			Function	Setting
Class 1 and 2	Class 3			
2-971		Toner Full Sensor Counter	Displays the total number of connection errors that have occurred for the toner overflow sensor.	
			<b>This SP mode is for factory use only.</b>	

Model: Adonis-C1		Date: 26-Jun-00	No.: RA283004
Subject: BICU Firmware History		Prepared by: S. Tomoe	
From: Technical Services Dept., GTS Division			
Classification:	<input type="checkbox"/> Troubleshooting <input type="checkbox"/> Part information <input type="checkbox"/> Action required <input type="checkbox"/> Mechanical <input type="checkbox"/> Electrical <input type="checkbox"/> Service manual revision <input type="checkbox"/> Paper path <input type="checkbox"/> Transmit/receive <input type="checkbox"/> Retrofit information <input checked="" type="checkbox"/> Other (      )		

## Printer firmware history for the Adonis-C1

A2845113	Version	C. SUM	Production
B	8.9	A308	1st Mass Prod.
C	8.10	8953	May Prod. '00

Symptom Corrected	Suffix
SC990/542 simultaneous occurrence Symptom: When the main power switch is turned on or the machine recovers from Energy Saver Mode, SC990 can occur before the machine reaches the standby-by temperature (very low occurrence rate). If this happens, SC542 will be triggered. <i>SC990: Software Performance Error</i> <i>SC542: Fusing Temperature Warm-Up Error</i> Correction: Fusing temperature control turns off whenever SC990 occurs.	C

Model: Adonis-C1 (Scanner Option)		Date: 24-Jan-01	No.: RA283005
Subject: Scanner controller does not connect to a hub		Prepared by: S. Tomoe	
From: Technical Services Dept., GTS Division			
Classification:	<input checked="" type="checkbox"/> Troubleshooting	<input type="checkbox"/> Part information	<input type="checkbox"/> Action required
	<input type="checkbox"/> Mechanical	<input type="checkbox"/> Electrical	<input type="checkbox"/> Service manual revision
	<input type="checkbox"/> Paper path	<input type="checkbox"/> Transmit/receive	<input type="checkbox"/> Retrofit information
	<input type="checkbox"/> Other (      )		

## SYMPTOM

The scanner controller may not connect with some types of hubs at 10 Mdps, depending on the particular hub and scanner NIB combination.

## CAUSE

The OSC5 oscillator on the scanner controller does not match the particular hub.

## SOLUTION

The OSC5 oscillator has been changed. The new controller is A8775311 (A8775310N).

**Note:** Initially, this was only a suffix change, however later we changed the part number to A8775311.

Model: Adonis-C1		Date: 23-Jan-01	No.: MA283006
Modified Article: Printer Firmware History		Prepared by: S. Tomoe	
From: Technical Services Dept., GTS Division			
Reason for Modification:	<input type="checkbox"/> Parts catalog correction <input type="checkbox"/> To facilitate assembly <input type="checkbox"/> Part standardization	<input type="checkbox"/> Vendor change <input type="checkbox"/> To improve reliability <input checked="" type="checkbox"/> Other	<input type="checkbox"/> To meet standards (      )

Printer firmware history for the Adonis-C1

Other Models

B3586080	Version	C. SUM	Production
A	1.88	03E4	1st Mass Prod.
B	1.92	D344	May Prod. '00
<b>C</b>	<b>1.97</b>	<b>1769</b>	<b>November Prod. '00</b>

Lanier Models

B3586081	Version	C. SUM	Production
A	1.88	03E4	1st Mass Prod.
B	1.92	D344	May Prod. '00
<b>C</b>	<b>1.97</b>	<b>1769</b>	<b>November Prod. '00</b>

Symptom Corrected	Other models	Lanier
<b><i>After Danish has been set as the language, extra characters are printed out.</i></b>	<b>C</b>	<b>C</b>
<b><i>When the Dazel system is used, there is no job completion notification.</i></b>	<b>C</b>	<b>C</b>
<b><i>-With PortNavi, the job completion notification is either printed out but incorrect, or is not printed out at all.</i></b> <b><i>-Jobs performed without using registered user codes do not appear on the job history list.</i></b>	<b>C</b>	<b>C</b>
This firmware has been modified to support Job MIB.	B	B
This version is DAZEL certified.	B	B
The position of the image is different when using the PCL driver vs. the PS driver.	B	B
The firmware has been modified to allow downloading of document formats.	B	B
This firmware has been modified to support Page Count MIB.	B	B
SC2001 sometimes occurs during a print job if Auto Tray Select has been selected.	B	B
SC365 sometimes occurs during a duplex print job.	B	B
A paper jam sometimes occurs after Auto Reset has been performed.	B	B
Any of the fonts that have been downloaded to the HDD can be set as the default font.	B	B

Model: NAD 30S/30/40		Date: 02-Mar-01	No.: RA230065
Subject: Drum		Prepared by: E. Fukuyama	
From: Technical Service Dept., GTS Division			
Classification:	<input type="checkbox"/> Troubleshooting	<input type="checkbox"/> Part information	<input type="checkbox"/> Action required
	<input type="checkbox"/> Mechanical	<input type="checkbox"/> Electrical	<input type="checkbox"/> Service manual revision
	<input type="checkbox"/> Paper path	<input type="checkbox"/> Transmit/receive	<input type="checkbox"/> Retrofit information
	<input checked="" type="checkbox"/> Other (      )		

This is to inform you of a factory modification made to improve the efficiency of the OPC drum production process. This process was only used for drums produced in November 2000 (reason below). Although these drums have a slightly different appearance, there is no difference in quality or performance.

#### November 2000 Change:

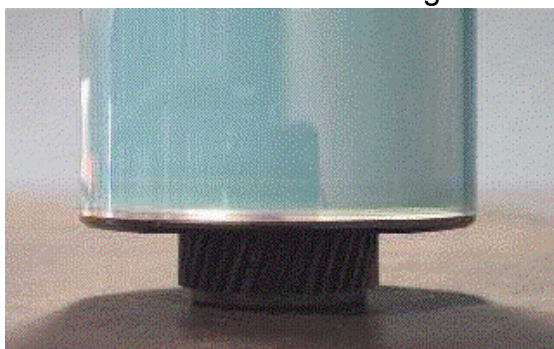
The photo-conductive CGL layer is not applied to an area 14 mm from one end of the drum edge (see photographs below). This area is outside the image writing area. Tests on the prototypes confirmed that there was no change in performance or quality between the two drums, and therefore no effect on image quality.

During November 2000, the efficiency of the new drum production process was reconfirmed. Although there were no quality problems with the drum itself, the process efficiency was not improved as much as previously expected and it was changed back to the previous method in December.

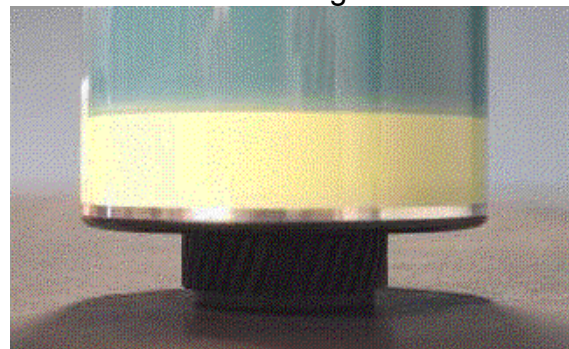
There are a total of 6,251 drums from November production that have been installed in the NAD and the Adonis-C1 N.A. model (RAI produced). However, since these units have already been shipped, the machine serial numbers are not known. The total number of November production drums registered as service parts is 3,866.

The following picture can be used to visually distinguish between drums from November 2000 production and those from before/after:

Before/After Nov '00 Change:



Nov '00 Change:





Reissued: 08-Mar-01

Model: Adonis-C1	Date: 24-Jan-01	No.: RA283006a
------------------	-----------------	----------------

## RTB Correction

The items in bold italics have been corrected or added.

Subject: Printer Firmware History		Prepared by: S. Tomoe	
From: Technical Services Dept., GTS Division			
Classification:	<input type="checkbox"/> Troubleshooting	<input type="checkbox"/> Part information	<input type="checkbox"/> Action required
	<input type="checkbox"/> Mechanical	<input type="checkbox"/> Electrical	<input type="checkbox"/> Service manual revision
	<input type="checkbox"/> Paper path	<input type="checkbox"/> Transmit/receive	<input type="checkbox"/> Retrofit information
	<input checked="" type="checkbox"/> Other (      )		

Printer firmware history for the Adonis-C1.

### Other Models

B3586080	Version	C. SUM	Production
A	1.88	03E4	1st Mass Prod.
B	1.92	D344	May Prod. '00
C	1.97	1769	November Prod. '00
<b><i>D</i></b>	<b><i>1.98</i></b>	<b><i>576D</i></b>	<b><i>February Prod. '01</i></b>

### Lanier

B3586081	Version	C. SUM	Production
A	1.88	03E4	1st Mass Prod.
B	1.92	D344	May Prod. '00
C	1.97	1769	November Prod. '00
<b><i>D</i></b>	<b><i>1.98</i></b>	<b><i>576D</i></b>	<b><i>February Prod. '01</i></b>

Symptom Corrected	Other models	Lanier
<b><i>When performing a mixed copy job with Letter and Legal paper, the machine does not switch between the trays from an AS400 system.</i></b>	<b><i>D</i></b>	<b><i>D</i></b>
<b><i>Grid lines do not appear on MS-Excel originals.</i></b>	<b><i>D</i></b>	<b><i>D</i></b>
<b><i>When printing from an SAP application, extra sheets of paper are fed.</i></b>	<b><i>D</i></b>	<b><i>D</i></b>

Reissued: 13-Feb-02

Model: Adonis-C1	Date: 24-Jan-01	No.: RA283006b
------------------	-----------------	----------------

## RTB Correction

The items in bold italics have been corrected or added.

Subject: Printer Firmware History		Prepared by: S. Tomoe	
From: Technical Services Dept., GTS Division			
Classification:	<input type="checkbox"/> Troubleshooting <input type="checkbox"/> Mechanical <input type="checkbox"/> Paper path <input checked="" type="checkbox"/> Other (      )	<input type="checkbox"/> Part information <input type="checkbox"/> Electrical <input type="checkbox"/> Transmit/receive	<input type="checkbox"/> Action required <input type="checkbox"/> Service manual revision <input type="checkbox"/> Retrofit information

Printer firmware history for the Adonis-C1

For Models other than Lanier

B3586080	Version	C. SUM	Production
A	1.88	03E4	1st Mass Prod.
B	1.92	D344	May Prod. '00
C	1.97	1769	November Prod. '00
D	1.98	576D	February Prod. '01
<b><i>E</i></b>	<b><i>2.01</i></b>	<b><i>BC8F</i></b>	<b><i>September Prod. '01</i></b>

For Lanier Models

B3586081	Version	C. SUM	Production
A	1.88	03E4	1st Mass Prod.
B	1.92	D344	May Prod. '00
C	1.97	1769	November Prod. '00
D	1.98	576D	February Prod. '01
<b><i>E</i></b>	<b><i>2.01</i></b>	<b><i>BC8F</i></b>	<b><i>September Prod. '01</i></b>

Symptom Corrected	Other models	Lanier
<b><i>SmartNetMonitor shows the wrong total counter value.</i></b>	<b><i>E</i></b>	<b><i>E</i></b>
<b><i>The right edge of the image is missing when printing out from an AS400 system.</i></b>	<b><i>E</i></b>	<b><i>E</i></b>
<b><i>Cannot perform auto conversion for A4/Letter.</i></b>	<b><i>E</i></b>	<b><i>E</i></b>

Reissued: 18-Feb-02

Model: Adonis-C1	Date: 24-Jan-01	No.: RA283006c
------------------	-----------------	----------------

## RTB Correction

The items in bold italics have been corrected or added.

Subject: Printer Firmware History		Prepared by: S. Tomoe	
From: Technical Services Dept., GTS Division			
Classification:	<input type="checkbox"/> Troubleshooting <input type="checkbox"/> Mechanical <input type="checkbox"/> Paper path <input checked="" type="checkbox"/> Other (      )	<input type="checkbox"/> Part information <input type="checkbox"/> Electrical <input type="checkbox"/> Transmit/receive	<input type="checkbox"/> Action required <input type="checkbox"/> Service manual revision <input type="checkbox"/> Retrofit information

Printer firmware history for the Adonis-C1.

For Models Other than Lanier

B3586080	Version	C. SUM	Production
A	1.88	03E4	1st Mass Prod.
B	1.92	D344	May Prod. '00
C	1.97	1769	November Prod. '00
D	1.98	576D	February Prod. '01
E	2.01	BC8F	September Prod. '01
<b><i>F</i></b>	<b><i>2.02</i></b>	<b><i>B89C</i></b>	<b><i>February Prod. '02</i></b>

For Lanier Models

B3586081	Version	C. SUM	Production
A	1.88	03E4	1st Mass Prod.
B	1.92	D344	May Prod. '00
C	1.97	1769	November Prod. '00
D	1.98	576D	February Prod. '01
E	2.01	BC8F	September Prod. '01
<b><i>F</i></b>	<b><i>2.02</i></b>	<b><i>B89C</i></b>	<b><i>February Prod. '02</i></b>

Symptom Corrected	Other models	Lanier
<b><i>After NIB reset has been performed, "NIB Initializing ...." is sometimes displayed, and the machine does not enter stand-by mode.</i></b>	<b><i>F</i></b>	<b><i>F</i></b>
<b><i>When using the Smart Net Monitor, sometimes nothing is printed out.</i></b>	<b><i>F</i></b>	<b><i>F</i></b>
<b><i>When printing two pages from a UNIX system, a blank page may be inserted in between.</i></b>	<b><i>F</i></b>	<b><i>F</i></b>

Reissued: 25-Jun-03

Model: Adonis-C1	Date: 26-Jun-00	No.: RA283004a
------------------	-----------------	----------------

## RTB Correction

The items in bold italics have been corrected or added.

Subject: BICU Firmware History		Prepared by: S. Tomoe	
From: 1st Tech. Support Sec. Service Support Dept.			
Classification:	<input type="checkbox"/> Troubleshooting <input type="checkbox"/> Part information <input type="checkbox"/> Action required		
	<input type="checkbox"/> Mechanical <input type="checkbox"/> Electrical <input type="checkbox"/> Service manual revision		
	<input type="checkbox"/> Paper path <input type="checkbox"/> Transmit/receive <input type="checkbox"/> Retrofit information		
	<input checked="" type="checkbox"/> Other (      )		

Printer firmware history for the Adonis-C1.

A2845113	Version	C. SUM	Production
B	8.9	A308	1st Mass Prod.
C	8.10	8953	May Prod. '00
<b><i>D</i></b>	<b><i>8.12</i></b>	<b><i>05A6</i></b>	<b><i>Not effect to the production (The production has already discontinued).</i></b>

Symptom Corrected	Suffix
<b><i>SC101 occurs when SP2902 is performed.</i></b>	<b><i>D</i></b>
<b><i>The following functions have been added.</i></b> <b><i>1) NVRAM check is performed at power ON. If the machine cannot access the NVRAM, SC900 is triggered.</i></b> <b><i>2) All letters from A to Z can be used for the serial number setting (SP5-811). The procedure is as follows:</i></b> <b><i>1. Access SP 5-811 (serial number input).</i></b> <b><i>2. Press the asterisk key ("*"). The letter "A" appears on the display.</i></b> <b><i>3. Press "0", and the letter displayed will then change from "A"→"B"→..."Z"</i></b> <b><i>4. Press the asterisk key or any number except 0 to input the letter being displayed.</i></b>	<b><i>D</i></b>
<b><i>The default values for the following SP modes have been changed to minimize dirtying on the charge roller.</i></b> <b><i>New default:</i></b> <b><i>1) SP2001-2      400</i></b> <b><i>2) SP2005-4      1700</i></b>	<b><i>D</i></b>
SC990/542 simultaneous occurrence Symptom: When the main power switch is turned on or the machine recovers from Energy Saver Mode, SC990 can occur before the machine reaches standby-by temperature (very low occurrence rate). If this happens, SC542 will be triggered. SC990: Software Performance Error SC542: Fusing Temperature Warm-Up Error Correction: Fusing temperature control turns off whenever SC990 occurs.	<b><i>C</i></b>

Reissued: 1-Jul-03

Model: Adonis-C1	Date: 24-Jan-01	No.: RA283006d
------------------	-----------------	----------------

## RTB Correction

The items in bold italics have been corrected or added.

Subject: Printer Firmware History		Prepared by: S. Tomoe	
From: 1st Tech. Support Sec. Service Support Dept.			
Classification:	<input type="checkbox"/> Troubleshooting <input type="checkbox"/> Mechanical <input type="checkbox"/> Paper path <input checked="" type="checkbox"/> Other (      )	<input type="checkbox"/> Part information <input type="checkbox"/> Electrical <input type="checkbox"/> Transmit/receive	<input type="checkbox"/> Action required <input type="checkbox"/> Service manual revision <input type="checkbox"/> Retrofit information

Printer firmware history for the Adonis-C1.

(For Other Models)

B3586080	Version	C. SUM	Production
A	1.88	03E4	1st Mass Prod.
B	1.92	D344	May Prod. '00
C	1.97	1769	November Prod. '00
D	1.98	576D	February Prod. '01
E	2.01	BC8F	September Prod. '01
F	2.02	B89C	February Prod. '02
<b><i>G</i></b>	<b><i>2.03</i></b>	<b><i>2E14</i></b>	<b><i>March Prod. '02</i></b>
<b><i>H</i></b>	<b><i>2.05</i></b>	<b><i>5112</i></b>	<b><i>May Prod. '02</i></b>

(For Lanier Models)

B3586081	Version	C. SUM	Production
A	1.88	03E4	1st Mass Prod.
B	1.92	D344	May Prod. '00
C	1.97	1769	November Prod. '00
D	1.98	576D	February Prod. '01
E	2.01	BC8F	September Prod. '01
F	2.02	B89C	February Prod. '02
<b><i>G</i></b>	<b><i>2.03</i></b>	<b><i>2E14</i></b>	<b><i>March prod. '02</i></b>
<b><i>H</i></b>	<b><i>2.05</i></b>	<b><i>5112</i></b>	<b><i>May Prod. '02</i></b>

**Reissued: 1-Jul-03**

Model: Adonis-C1	Date: 24-Jan-01	No.: RA283006d
------------------	-----------------	----------------

Symptom Corrected	Other models	Lanier
<b><i>All characters from Euro symbol sets are printed out in Arial regardless of the font selected (except for Times New Roman).</i></b>	<b><i>H</i></b>	<b><i>H</i></b>
<b><i>Added Euro symbol sets (containing the Euro currency symbol) to match the capability of HP printers (PCL5e, PCLXL).</i></b>	<b><i>G</i></b>	<b><i>G</i></b>
<b><i>A PS job is deleted when the Bypass tray is selected as the default tray in the PS driver.</i></b>	<b><i>G</i></b>	<b><i>G</i></b>
After NIB reset has been performed, "NIB Initializing ...." is sometimes displayed, and the machine does not enter stand-by mode.	F	F
When using the Smart Net Monitor, sometimes nothing is printed out.	F	F
When printing two pages from a UNIX system, a blank page may be inserted in between.	F	F
SmartNetMonitor shows wrong total counter value.	E	E
The right edge of the image is missing when printing out from the AS400.	E	E
Cannot perform auto conversion for A4/Letter.	E	E
When performing a mixed copy job with Letter and Legal, the machine does not switch between the trays from an AS400 system.	D	D
Grid lines do not appear on MS-Excel originals.	D	D
When printing from an SAP application, extra sheets of paper are fed.	D	D
After Danish has been set as the language, extra characters are printed out.	C	C
When the Dazel system is used, there is no job completion notification.	C	C
-With PortNavi, the job completion notification is either printed out but incorrect, or is not printed out at all. -Jobs performed without using registered user codes do not appear on the job history list.	C	C
This firmware has been modified to support Job MIB.	B	B
This version is DAZEL certified.	B	B
The position of the image is different when using the PCL driver vs. the PS driver.	B	B
The firmware has been modified to allow downloading of document formats.	B	B
This firmware has been modified to support Page Count MIB.	B	B
SC2001 sometimes occurs during a print job if Auto Tray Select has been selected.	B	B
SC365 sometimes occurs during a duplex print job.	B	B
A paper jam sometimes occurs after Auto Reset has been performed.	B	B
Any of the fonts that have been downloaded to the HDD can be set as the default font.	B	B