

Model: Adonis-C1		Date: 21-Apr-00	No.: MA283001
Modified Article: Parts Catalog Correction		Prepared by: S. Tomoe	
From: Technical Services Dept., GTS Division			
Reason for Modification:	<input checked="" type="checkbox"/> Parts catalog correction	<input type="checkbox"/> Vendor change	<input type="checkbox"/> To meet standards ()
	<input type="checkbox"/> To facilitate assembly	<input type="checkbox"/> To improve reliability	
	<input type="checkbox"/> Part standardization	<input type="checkbox"/> Other	

The following should be corrected. Please correct your parts catalog.

Old part number	New part number	Description	Q'ty	Int	Page	Index	Note
A2325867		Angle Bracket – Push Switch	1-0		63	16	Fig.1
AW500022		Push Switch	1-0		63	17	Fig.1
A2323552	A2323561	Ball Bearing – 8x22x7			57	24	

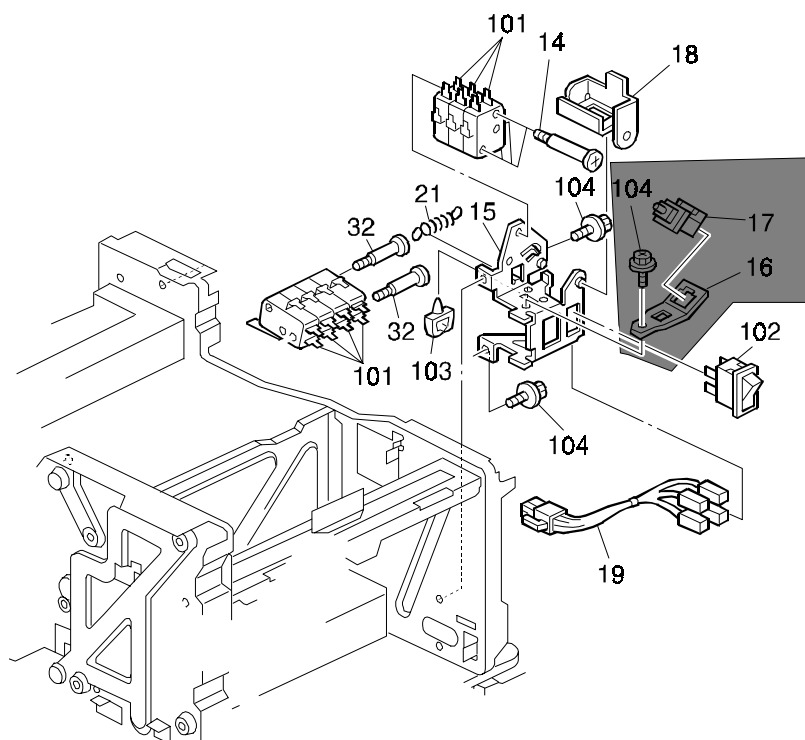


Fig.1

Model: Adonis-C1		Date: 23-Oct-00	No.: MA283002
Modified Article: Right Inner Cover		Prepared by: S. Tomoe	
From: Technical Services Dept., GTS Division			
Reason for Modification:	<input type="checkbox"/> Parts catalog correction <input type="checkbox"/> To facilitate assembly <input checked="" type="checkbox"/> Part standardization	<input type="checkbox"/> Vendor change <input type="checkbox"/> To improve reliability <input type="checkbox"/> Other	<input type="checkbox"/> To meet standards ()

To standardize the part with the GSA model, the Right Inner Cover has been changed as follows.

Old part number	New part number	Description	Q'ty	Int	Page	Index	Note
A2321373	G0341373	Inner Cover - Right	1-1	0/0	41	10	



Reissued: 19-Apr-01

Model: Adonis-C1	Date: 23-Jan-01	No.: MA283003a
------------------	-----------------	----------------

MB Correction

The Serial Number information has been changed.

Modified Article: Hard Disk		Prepared by: S. Tomoe	
From: Technical Services Dept., GTS Division			
Reason for Modification:	<input type="checkbox"/> Parts catalog correction	<input checked="" type="checkbox"/> Vendor change	<input type="checkbox"/> To meet standards ()
	<input type="checkbox"/> To facilitate assembly	<input type="checkbox"/> To improve reliability	
	<input type="checkbox"/> Part standardization	<input type="checkbox"/> Other	

The hard disk for the copier has been changed because production has been discontinued.

Old part number	New part number	Description	Q'ty	Int	Page	Index	Note
A6915879	A6915860	Hard Disk	1-1	0/0	63	24	

RAI (China) Production

MODEL NAME	V/Hz	DESTINATION	CODE	SERIAL NO.
Gestetner 3235e Savin 9935DPE	115/60	USA, Canada	A283-10	H52066XXXXX
Ricoh Aficio 350e	115/60	USA, Canada	A283-17	H52066XXXXX
Lanier 5435	115/60	USA, Canada	A283-55	L075086XXXX
Gestetner 3245e Savin 9945DPE	115/60	USA, Canada	A284-10	H53066XXXXX
Ricoh Aficio 450e	115/60	USA, Canada	A284-17	H53066XXXXX
Lanier 5445	115/60	USA, Canada	A284-55	L076086XXXX

RCL (Japan) Production

MODEL NAME	V/Hz	DESTINATION	CODE	SERIAL NO.
Savin 2035DPE	115/60	USA, Canada	A283-30	H5200500001
Ricoh Aficio 355e	115/60	USA, Canada	A283-37	H5200500086
Savin 2045DPE	115/60	USA, Canada	A284-30	H53008XXXXX
Ricoh Aficio 455e	115/60	USA, Canada	A284-37	H53008XXXXX

Reissued: 19-Apr-01

Model: Adonis-C1	Date: 23-Jan-01	No.: MA283004a
------------------	-----------------	----------------

MB Correction

The Serial Number information has been changed.

Modified Article: Quenching Lamp Magnet		Prepared by: S. Tomoe	
From: Technical Services Dept., GTS Division			
Reason for Modification:	<input type="checkbox"/> Parts catalog correction	<input type="checkbox"/> Vendor change	<input type="checkbox"/> To meet standards ()
	<input type="checkbox"/> To facilitate assembly	<input type="checkbox"/> To improve reliability	
	<input checked="" type="checkbox"/> Part standardization	<input type="checkbox"/> Other	

To standardize the part with other models, the quenching lamp magnet has been changed.

Old part number	New part number	Description	Q'ty	Int	Page	Index	Note
A2322373	A2673455	Magnet – Quenching Lamp	1-1	0/0	65	9	

RAI (China) Production

MODEL NAME	V/Hz	DESTINATION	CODE	SERIAL NO.
Gestetner 3235e Savin 9935DPE	115/60	USA, Canada	A283-10	H52069XXXXX
Ricoh Aficio 350e	115/60	USA, Canada	A283-17	H52069XXXXX
Lanier 5435	115/60	USA, Canada	A283-55	L075089XXXX
Gestetner 3245e Savin 9945DPE	115/60	USA, Canada	A284-10	H53069XXXXX
Ricoh Aficio 450e	115/60	USA, Canada	A284-17	H53069XXXXX
Lanier 5445	115/60	USA, Canada	A284-55	L076089XXXX

RCL (Japan) Production

MODEL NAME	V/Hz	DESTINATION	CODE	SERIAL NO.
Savin 2035DPE	115/60	USA, Canada	A283-30	H5200800001
Ricoh Aficio 355e	115/60	USA, Canada	A283-37	H5200700020
Savin 2045DPE	115/60	USA, Canada	A284-30	H5300800001
Ricoh Aficio 455e	115/60	USA, Canada	A284-37	H5300700001

Reissued: 19-Apr-01

Model: Adonis-C1	Date: 23-Jan-01	No.: MA283005a
------------------	-----------------	----------------

MB Correction

The Serial Number information has been changed.

Modified Article: PFB Board		Prepared by: S. Tomoe	
From: Technical Services Dept., GTS Division			
Reason for Modification:	<input type="checkbox"/> Parts catalog correction	<input type="checkbox"/> Vendor change	<input type="checkbox"/> To meet standards ()
	<input type="checkbox"/> To facilitate assembly	<input checked="" type="checkbox"/> To improve reliability	
	<input type="checkbox"/> Part standardization	<input type="checkbox"/> Other	

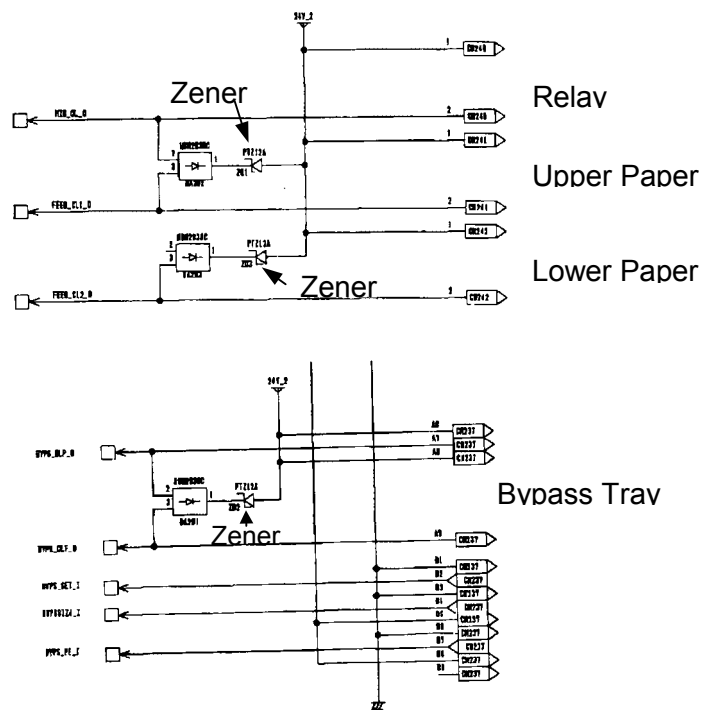
A counter electromotive force flows through the clutch drive circuits and causes the off-timing of the clutch to be delayed. This can result in a paper jam.

A zener diode has been added to the drive circuits of the PFB board for the following clutches, preventing any counter electromotive force from flowing through the circuits:

1. Relay Clutch
2. Upper Paper Feed Clutch
3. Lower Paper Feed Clutch
4. By-pass Tray Feed Clutch

The new part number for the PFB board is as follows:

Old part number	New part number	Description	Q'ty	Int	Page	Index
A2325130	A2325135	PFB Board	1-1	X/O	59	20



Model: Adonis-C1

Date: 23-Jan-01

No.: MA283005

RAI (China) Production

MODEL NAME	V/Hz	DESTINATION	CODE	SERIAL NO.
Gestetner 3235e Savin 9935DPE	115/60	USA, Canada	A283-10	H52010XXXXX
Ricoh Aficio 350e	115/60	USA, Canada	A283-17	H52010XXXXX
Lanier 5435	115/60	USA, Canada	A283-55	L075010XXXX
Gestetner 3245e Savin 9945DPE	115/60	USA, Canada	A284-10	H53010XXXXX
Ricoh Aficio 450e	115/60	USA, Canada	A284-17	H53010XXXXX
Lanier 5445	115/60	USA, Canada	A284-55	L076010XXXX

RCL (Japan) Production

MODEL NAME	V/Hz	DESTINATION	CODE	SERIAL NO.
Savin 2035DPE	115/60	USA, Canada	A283-30	H5200800001
Ricoh Aficio 355e	115/60	USA, Canada	A283-37	H5200800061
Savin 2045DPE	115/60	USA, Canada	A284-30	H5300800001
Ricoh Aficio 455e	115/60	USA, Canada	A284-37	H5301000001

Reissued: 19-Apr-01

Model: Adonis-C1	Date: 23-Jan-01	No.: MA283006a
------------------	-----------------	----------------

MB Correction

The Serial Number information has been changed.

Modified Article: Spur		Prepared by: S. Tomoe	
From: Technical Services Dept., GTS Division			
Reason for Modification:	<input type="checkbox"/> Parts catalog correction	<input type="checkbox"/> Vendor change	<input type="checkbox"/> To meet standards ()
	<input type="checkbox"/> To facilitate assembly	<input checked="" type="checkbox"/> To improve reliability	
	<input type="checkbox"/> Part standardization	<input type="checkbox"/> Other	

To prevent toner adhering to the spur, the material of the spur has been changed.

Old part number	New part number	Description	Q'ty	Int	Page	Index	Note
A2322374	B0042310	Spur	6	O/O	33	2	

RAI (China) Production

MODEL NAME	V/Hz	DESTINATION	CODE	SERIAL NO.
Gestetner 3235e Savin 9935DPE	115/60	USA, Canada	A283-10	H52070XXXXX
Ricoh Aficio 350e	115/60	USA, Canada	A283-17	H52070XXXXX
Lanier 5435	115/60	USA, Canada	A283-55	L075090XXXX
Gestetner 3245e Savin 9945DPE	115/60	USA, Canada	A284-10	H53070XXXXX
Ricoh Aficio 450e	115/60	USA, Canada	A284-17	H53070XXXXX
Lanier 5445	115/60	USA, Canada	A284-55	L076090XXXX

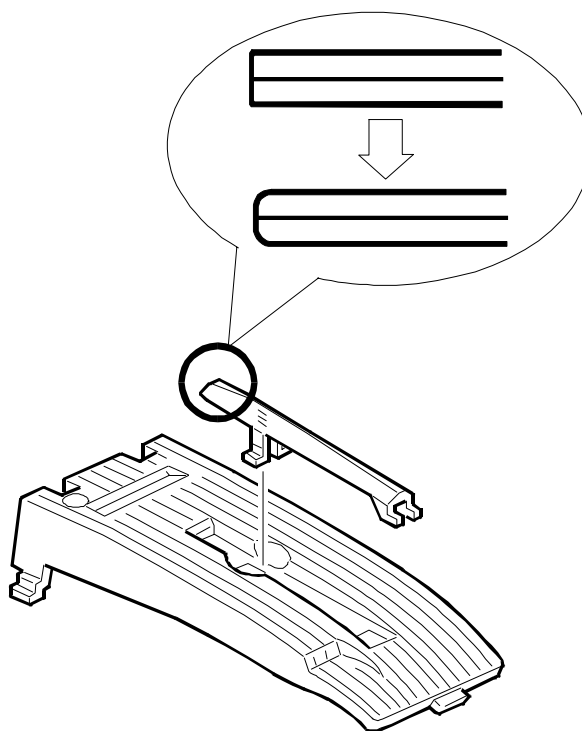
RCL (Japan) Production

MODEL NAME	V/Hz	DESTINATION	CODE	SERIAL NO.
Savin 2035DPE	115/60	USA, Canada	A283-30	H52010XXXXX
Ricoh Aficio 355e	115/60	USA, Canada	A283-37	H52010XXXXX
Savin 2045DPE	115/60	USA, Canada	A284-30	H5301100001
Ricoh Aficio 455e	115/60	USA, Canada	A284-37	H5301000001

Model: Adonis-C1		Date: 23-Jan-01	No.: MA283007
Modified Article: Copy Tray Guide		Prepared by: S. Tomoe	
From: Technical Services Dept., GTS Division			
Reason for Modification:	<input type="checkbox"/> Parts catalog correction <input type="checkbox"/> To facilitate assembly <input type="checkbox"/> Part standardization	<input type="checkbox"/> Vendor change <input type="checkbox"/> To improve reliability <input checked="" type="checkbox"/> Other	<input type="checkbox"/> To meet standards ()

The edge of the Copy Tray Guide has been rounded to ensure that scratches or other minor injuries do not occur.

Old part number	New part number	Description	Q'ty	Int	Page	Index	Note
A2324498	A2844498	Copy Tray Guide	1	X/O	13	2	



Model: Adonis-C1

Date: 23-Jan-01

No.: MA283007

RAI (China) Production

MODEL NAME	V/Hz	DESTINATION	CODE	SERIAL NO.
Gestetner 3235e Savin 9935DPE	115/60	USA, Canada	A283-10	H52010XXXXX
Ricoh Aficio 350e	115/60	USA, Canada	A283-17	H52010XXXXX
Lanier 5435	115/60	USA, Canada	A283-55	L075010XXXX
Gestetner 3245e Savin 9945DPE	115/60	USA, Canada	A284-10	H53010XXXXX
Ricoh Aficio 450e	115/60	USA, Canada	A284-17	H53010XXXXX
Lanier 5445	115/60	USA, Canada	A284-55	L076010XXXX

RCL (Japan) Production

MODEL NAME	V/Hz	DESTINATION	CODE	SERIAL NO.
Savin 2035DPE	115/60	USA, Canada	A283-30	H52010XXXXX
Ricoh Aficio 355e	115/60	USA, Canada	A283-37	H52010XXXXX
Savin 2045DPE	115/60	USA, Canada	A284-30	H5301100001
Ricoh Aficio 455e	115/60	USA, Canada	A284-37	H5301000001

Model: Adonis-C1		Date: 04-Apr-01	No.: MA283008
Modified Article: Thermofuse		Prepared by: S. Tomoe	
From: Technical Services Dept., GTS Division			
Reason for Modification:	<input type="checkbox"/> Parts catalog correction <input type="checkbox"/> To facilitate assembly <input type="checkbox"/> Part standardization	<input checked="" type="checkbox"/> Vendor change <input type="checkbox"/> To improve reliability <input type="checkbox"/> Other	<input type="checkbox"/> To meet standards ()

The A2324100 thermofuse has been discontinued by the manufacturer and has been changed over to A2314100. With this change, the P/N for the Fusing Unit Assembly has also been changed as shown below.

Old part number	New part number	Description	Q'ty	Int	Page	Index	Note
A2324100	A2314100	Thermofuse	1	O/O	47	8	
A2327320	A2317320	Fusing Unit Ass'y (115V)	1	O/O	47	1	

Model: Adonis-C1		Date: 04-Apr-01	No.: MA283009
Modified Article: Hard Disk		Prepared by: S. Tomoe	
From: Technical Services Dept., GTS Division			
Reason for Modification:	<input type="checkbox"/> Parts catalog correction <input type="checkbox"/> To facilitate assembly <input type="checkbox"/> Part standardization	<input checked="" type="checkbox"/> Vendor change <input type="checkbox"/> To improve reliability <input type="checkbox"/> Other	<input type="checkbox"/> To meet standards ()

The A6915860 Hard Disk for the mainframe copier has been discontinued by the manufacturer and has been changed over to A6915861. However, there are no functional changes.

Old part number	New part number	Description	Q'ty	Int	Page	Index	Note
A6915860	A6915861	Hard Disk	1-1	0/0	63	24	

Model: Adonis-C1		Date: 04-Apr-01	No.: MA283010
Modified Article: Inner Covers		Prepared by: S. Tomoe	
From: Technical Services Dept., GTS Division			
Reason for Modification:	<input type="checkbox"/> Parts catalog correction <input type="checkbox"/> To facilitate assembly <input checked="" type="checkbox"/> Part standardization	<input type="checkbox"/> Vendor change <input type="checkbox"/> To improve reliability <input type="checkbox"/> Other	<input type="checkbox"/> To meet standards ()

To facilitate parts standardization, the Left Inner Cover and Right Upper Inner Cover have been changed over to the A2841376 and A2841372 covers, respectively (currently used on other models).

Old part number	New part number	Description	Q'ty	Int	Page	Index
A2321375	A2841376	Left Inner Cover	1-1	O/O	13	12
A2321371	A2841372	Inner Cover – Right Upper	1-1	O/O	13	13

Model: Adonis-C1		Date: 04-Apr-01	No.: MA283011
Modified Article: Hot Roller		Prepared by: S. Tomoe	
From: Technical Services Dept., GTS Division			
Reason for Modification:	<input type="checkbox"/> Parts catalog correction <input type="checkbox"/> To facilitate assembly <input type="checkbox"/> Part standardization	<input checked="" type="checkbox"/> Vendor change <input type="checkbox"/> To improve reliability <input type="checkbox"/> Other	<input type="checkbox"/> To meet standards ()

The hot roller was previously made by an outside manufacturer, but it has been changed over to a Ricoh produced roller.

Old part number	New part number	Description	Q'ty	Int	Page	Index
AE011041	AE011059	Hot Roller	1-1	O/O	47	17

Model: Adonis-C1		Date: 04-Apr-01	No.: MA283012
Modified Article: Hard Disk		Prepared by: S. Tomoe	
From: Technical Services Dept., GTS Division			
Reason for Modification:	<input type="checkbox"/> Parts catalog correction <input type="checkbox"/> To facilitate assembly <input type="checkbox"/> Part standardization	<input checked="" type="checkbox"/> Vendor change <input type="checkbox"/> To improve reliability <input type="checkbox"/> Other	<input type="checkbox"/> To meet standards ()

The A6915861 Hard Disk for the mainframe copier has been discontinued by the manufacturer and has been changed over to A6915862. However, there are no functional changes.

Old part number	New part number	Description	Q'ty	Int	Page	Index	Note
A6915861	A6915862	Hard Disk	1-1	0/0	63	24	

Model: Adonis-C1		Date: 04-Apr-01	No.: MA283013
Modified Article: Development Unit		Prepared by: S. Tomoe	
From: Technical Services Dept., GTS Division			
Reason for Modification:	<input type="checkbox"/> Parts catalog correction <input checked="" type="checkbox"/> To facilitate assembly <input type="checkbox"/> Part standardization	<input type="checkbox"/> Vendor change <input type="checkbox"/> To improve reliability <input type="checkbox"/> Other	<input type="checkbox"/> To meet standards ()

The parts listed below have been modified to facilitate assembly at the factory (interchangeability O/O). However their part numbers remain the same.

Note that the SPC part number for the development unit has been changed, since the suffix for the old part had already reached Z.

1. Sponge (AA153053, P45, #28): The material of the double-sided tape has been changed to facilitate attachment, as the previous type tended to stretch and not stick well.
2. Decal (A2323066, P45, #31): The decal's thickness has been reduced from 0.1 to 0.065 mm to prevent it from partially peeling off, as it tended to do since it was attached to a curved surface.

Old part number	New part number	Description	Q'ty	Int	Page	Index	Note
A2327460	A2327459	Development Unit	1	O/O	45	1	

Model: Adonis-C1		Date: 04-Apr-01	No.: MA283014
Modified Article: Photointerruptor		Prepared by: S. Tomoe	
From: Technical Services Dept., GTS Division			
Reason for Modification:	<input type="checkbox"/> Parts catalog correction <input type="checkbox"/> To facilitate assembly <input checked="" type="checkbox"/> Part standardization	<input type="checkbox"/> Vendor change <input type="checkbox"/> To improve reliability <input type="checkbox"/> Other	<input type="checkbox"/> To meet standards ()

To facilitate parts standardization, the Photointerruptor (feeler) has been changed over from AW020102 to AW020126.

Old part number	New part number	Description	Q'ty	Int	Page	Index
AW020102	AW020126	Photointerruptor	1-1	O/O	55	9

Model: Adonis-C1		Date: 22-Jun-01	No.: MA283015
Modified Article: Gear - 29Z		Prepared by: S. Tomoe	
From: Technical Services Dept., GTS Division			
Reason for Modification:	<input type="checkbox"/> Parts catalog correction <input type="checkbox"/> To facilitate assembly <input checked="" type="checkbox"/> Part standardization	<input type="checkbox"/> Vendor change <input type="checkbox"/> To improve reliability <input type="checkbox"/> Other	<input type="checkbox"/> To meet standards ()

To standardize the part with other models, the gear has been changed.

Old part number	New part number	Description	Q'ty	Page	Index
AB011384	AB011446	Gear – 29Z	1-1	45	11

Model: Adonis-C1		Date: 26-Sep-01	No.: MA283016
Modified Article: Driven Roller and Guide Plate		Prepared by: S. Tomoe	
From: Technical Services Dept., GTS Division			
Reason for Modification:	<input type="checkbox"/> Parts catalog correction <input type="checkbox"/> To facilitate assembly <input type="checkbox"/> Part standardization	<input type="checkbox"/> Vendor change <input checked="" type="checkbox"/> To improve reliability <input type="checkbox"/> Other	<input type="checkbox"/> To meet standards ()

To provide greater resistance against possible heat deformation, the materials for the Driven Roller and Guide Plate have been changed.

Old part number	New part number	Description	Q'ty	Int	Page	Index	Note
AF040559	AF040575	Driven Roller – M9	2-2	X/O	43	16	
A2324491	A2844491	Guide Plate – Fusing Unit	1-1	X/O	43	18	

RAI (China) Production

MODEL NAME	V/Hz	DESTINATION	CODE	SERIAL NO.
Gestetner 3235e Savin 9935DPE	115/60	USA, Canada	A283-10	H5207100001
Ricoh Aficio 350e	115/60	USA, Canada	A283-17	H5207100751
Lanier 5435	115/60	USA, Canada	A283-55	L0750910001
Gestetner 3245e Savin 9945DPE	115/60	USA, Canada	A284-10	H5307100001
Ricoh Aficio 450e	115/60	USA, Canada	A284-17	H5307100466
Lanier 5445	115/60	USA, Canada	A284-55	L0760910001

RCL (Japan) Production

MODEL NAME	V/Hz	DESTINATION	CODE	SERIAL NO.
Savin 2035DPE	115/60	USA, Canada	A283-30	H52102XXXXX
Ricoh Aficio 355e	115/60	USA, Canada	A283-37	H52102XXXXX
Savin 2045DPE	115/60	USA, Canada	A284-30	H5310100001
Ricoh Aficio 455e	115/60	USA, Canada	A284-37	H53102XXXXX

Model: Adonis-C1		Date: 26-Sep-01	No.: MA283017
Modified Article: Idler gear - 27Z for the transfer unit		Prepared by: S. Tomoe	
From: Technical Services Dept., GTS Division			
Reason for Modification:	<input type="checkbox"/> Parts catalog correction <input type="checkbox"/> To facilitate assembly <input type="checkbox"/> Part standardization	<input type="checkbox"/> Vendor change <input checked="" type="checkbox"/> To improve reliability <input type="checkbox"/> Other	<input type="checkbox"/> To meet standards ()

Symptom:

Bands of low image density appear at approximately 5-mm intervals.
This is especially noticeable in half-tone areas.

Cause:

The supporting tension supplied by the ribs of the idler gear was slightly high, causing (minimal) warping in the gear.

Countermeasure:

The gear ribs will be removed to ensure that the idler gear diameter remains uniform.

Old part number	New part number	Description	Q'ty	Int	Page	Index	Note
AB017429	AB014189	Gear – 27Z	1	X/O	41	12	

RAI (China) Production

MODEL NAME	V/Hz	DESTINATION	CODE	SERIAL NO.
Gestetner 3235e Savin 9935DPE	115/60	USA, Canada	A283-10	H5207100001
Ricoh Aficio 350e Lanier 5435	115/60	USA, Canada	A283-17 A283-55	H5207100751 L0750910001
Gestetner 3245e Savin 9945DPE	115/60	USA, Canada	A284-10	H5307100001
Ricoh Aficio 450e Lanier 5445	115/60	USA, Canada	A284-17 A284-55	H5307100466 L0760910001

RCL (Japan) Production

MODEL NAME	V/Hz	DESTINATION	CODE	SERIAL NO.
Savin 2035DPE	115/60	USA, Canada	A283-30	H52102XXXXX
Ricoh Aficio 355e	115/60	USA, Canada	A283-37	H52102XXXXX
Savin 2045DPE	115/60	USA, Canada	A284-30	H5310100001
Ricoh Aficio 455e	115/60	USA, Canada	A284-37	H53102XXXXX

Model: Adonis-C1		Date: 26-Sep-01	No.: MA283018
Modified Article: End Fence		Prepared by: S. Tomoe	
From: Technical Services Dept., GTS Division			
Reason for Modification:	<input type="checkbox"/> Parts catalog correction <input type="checkbox"/> To facilitate assembly <input type="checkbox"/> Part standardization	<input type="checkbox"/> Vendor change <input checked="" type="checkbox"/> To improve reliability <input type="checkbox"/> Other	<input type="checkbox"/> To meet standards ()

The shape of the End Fence edge has been changed to ensure that users pinch the fence hooks in the correct place. This will prevent the hooks from getting caught and breaking.

In addition, the material of the End Fence has been changed to a stronger one.

Old part number	New part number	Description	Q'ty	Int	Page	Index	Note
AF017020	AF017026	End Fence	1	X/O	29	6	

RAI (China) Production

MODEL NAME	V/Hz	DESTINATION	CODE	SERIAL NO.
Gestetner 3235e Savin 9935DPE	115/60	USA, Canada	A283-10	H5206900001
Ricoh Aficio 350e	115/60	USA, Canada	A283-17	H5206900316
Lanier 5435	115/60	USA, Canada	A283-55	L0750890001
Gestetner 3245e Savin 9945DPE	115/60	USA, Canada	A284-10	H5306900001
Ricoh Aficio 450e	115/60	USA, Canada	A284-17	H5306900426
Lanier 5445	115/60	USA, Canada	A284-55	L0760890001

RCL (Japan) Production

MODEL NAME	V/Hz	DESTINATION	CODE	SERIAL NO.
Savin 2035DPE	115/60	USA, Canada	A283-30	H52101XXXXX
Ricoh Aficio 355e	115/60	USA, Canada	A283-37	H52101XXXXX
Savin 2045DPE	115/60	USA, Canada	A284-30	H53101XXXXX
Ricoh Aficio 455e	115/60	USA, Canada	A284-37	H53101XXXXX

Model: Adonis-C1		Date: 26-Sep-01	No.: MA283019
Modified Article: Flexible Board		Prepared by: S. Tomoe	
From: Technical Services Dept., GTS Division			
Reason for Modification:	<input type="checkbox"/> Parts catalog correction <input checked="" type="checkbox"/> To facilitate assembly <input type="checkbox"/> Part standardization	<input type="checkbox"/> Vendor change <input type="checkbox"/> To improve reliability <input type="checkbox"/> Other	<input type="checkbox"/> To meet standards ()

During board assembly, slack in the Flexible Board high-voltage lines can cause the lines to get caught between the board and base plate. To ensure this does not occur, the two lines have been bound in 3 additional places and the insulating material has been strengthened.

Old part number	New part number	Description	Q'ty	Int	Page	Index	Note
A2845620	A2845621	Flexible Board	1-1	X/O	21	15	

RAI (China) Production

MODEL NAME	V/Hz	DESTINATION	CODE	SERIAL NO.
Gestetner 3235e Savin 9935DPE	115/60	USA, Canada	A283-10	H5216100834
Ricoh Aficio 350e	115/60	USA, Canada	A283-17	H5216100876
Lanier 5435	115/60	USA, Canada	A283-55	L0751810001
Gestetner 3245e Savin 9945DPE	115/60	USA, Canada	A284-10	H5316100001
Ricoh Aficio 450e	115/60	USA, Canada	A284-17	H5316100731
Lanier 5445	115/60	USA, Canada	A284-55	L0761810001

RCL (Japan) Production

MODEL NAME	V/Hz	DESTINATION	CODE	SERIAL NO.
Savin 2035DPE	115/60	USA, Canada	A283-30	H52101XXXXX
Ricoh Aficio 355e	115/60	USA, Canada	A283-37	H52101XXXXX
Savin 2045DPE	115/60	USA, Canada	A284-30	H5310100001
Ricoh Aficio 455e	115/60	USA, Canada	A284-37	H53101XXXXX

Model: Adonis-C1		Date: 23-Oct-01	No.: MA283020
Modified Article: Hard Disk		Prepared by: S. Tomoe	
From: Technical Services Dept., GTS Division			
Reason for Modification:	<input type="checkbox"/> Parts catalog correction <input type="checkbox"/> To facilitate assembly <input type="checkbox"/> Part standardization	<input checked="" type="checkbox"/> Vendor change <input type="checkbox"/> To improve reliability <input type="checkbox"/> Other	<input type="checkbox"/> To meet standards ()

The Hard Disk has been changed, as the A6915862 HDD has been discontinued from production.

Old part number	New part number	Description	Q'ty	Int	Page	Index	Note
A6915862	A6915863	Hard Disk	1-1	0/0	63	24	

Model: Adonis-C1		Date: 30-Nov-01	No.: MA283021
Modified Article: Ball bearing		Prepared by: S. Tomoe	
From: Technical Services Dept., GTS Division			
Reason for Modification:	<input type="checkbox"/> Parts catalog correction <input type="checkbox"/> To facilitate assembly <input checked="" type="checkbox"/> Part standardization	<input type="checkbox"/> Vendor change <input type="checkbox"/> To improve reliability <input type="checkbox"/> Other	<input type="checkbox"/> To meet standards ()

The Ball Bearing has been changed due to parts standardization.

Old part number	New part number	Description	Q'ty	Int	Page	Index
A2323561	G0601147	Ball Bearing – 8x22x7	1-1	O/O	57	24

Model: Adonis-C1		Date: 03-Dec-01	No.: MA283022
Modified Article: Cleaning Pad		Prepared by: S. Tomoe	
From: Technical Services Dept., GTS Division			
Reason for Modification:	<input type="checkbox"/> Parts catalog correction <input type="checkbox"/> To facilitate assembly <input type="checkbox"/> Part standardization	<input type="checkbox"/> Vendor change <input checked="" type="checkbox"/> To improve reliability <input type="checkbox"/> Other	<input type="checkbox"/> To meet standards ()

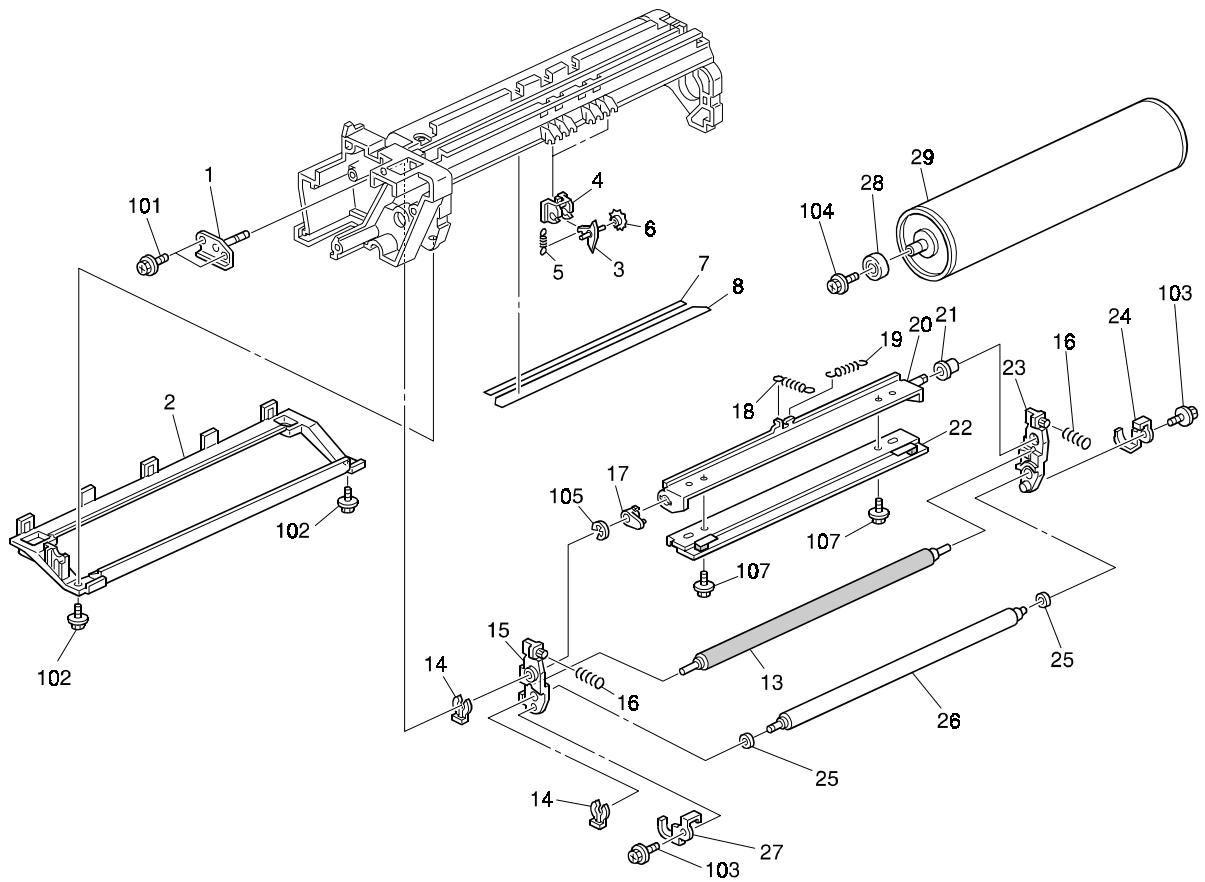


MB003009 announced the change of the Adonis-C2 Cleaning Pad to a Brush Roller, in order to increase Charge Roller cleaning efficiency. The Adonis-C1 has also adopted this new Brush Roller, along with the other related modified parts listed below.

Note:

1. For the Adonis-C1, this change affects service parts only, as it has already been discontinued from production.
2. The PCU assembly can be used in machines from before and after this modification (O/O). However, the Cleaning Pad and new Brush Roller are not interchangeable (X/X).

Old part number	New part number	Description	Q'ty	Int	Page	Index	Note
A2327361	A2327361	PCU	1-1	O/O	36 & 38	---	
A2322356	-	Stepped Screw – M6	1-0	-	39	9	
A2322298	-	Bracket – Charge Cleaning	1-0	-	39	10	
AA062301	-	Tension Spring	1-0	-	39	11	
A2322300	-	Roller - Cleaning	1-0	-	39	12	
A2322430	G0652330	Cleaning Pad Brush Roller – Cleaning	1-1	X/X-	39	13	
A2322303	G0652321	Front Arm – Charge Unit	1-1	X/O	39	15	
A2322305	G0652326	Rear Arm – Charge Unit	1-1	X/O	39	23	
AA063561	AA063648	Pressure Spring	2-2	X/O	39	16	
A2322403	G0652270	Receptacle – Charge Roller	1-1	X/X	37	17	



Model: Adonis-C1		Date: 22-Apr-02	No.: MA283023
Modified Article: Feed Shaft and Tightener Bracket		Prepared by: E. Fukuyama	
From: Technical Services sec. Service Planning Dept.			
Reason for Modification:	<input type="checkbox"/> Parts catalog correction <input type="checkbox"/> To facilitate assembly <input type="checkbox"/> Part standardization	<input type="checkbox"/> Vendor change <input checked="" type="checkbox"/> To improve reliability <input type="checkbox"/> Other	<input type="checkbox"/> To meet standards ()

The following changes have been made to reduce noise.

A. Noise generated by vibration of the Electrical Clutch Feed Shaft and Drive Gear:
See the replacement procedure on the next page.

To support the free end of the shaft with a bushing:

1. Lengthened the Feed Shaft from 229mm to 249mm.
2. Added a Bushing and e-ring.
3. Modified the shape of the Tightener Bracket to accommodate the new bushing (hole added).

To hold the clutch firmly in place:

1. Added a Roller to be pressed closely against the clutch.
2. Added a Pressure Plate to attach the Roller.

B. Noise from the Bushing of the Driven Roller Shaft:
 Changed the material of the Bushing.

Old part number	New part number	Description	Q'ty	Int	Page	Index
AA140660	AA140753	Feed Shaft	1-1	X/X	27	21
A2326061	G0656801	Tightener Bracket	1-1	X/O	27	38
A2326057	G0656800	Bracket-by-pass Feed Drive	1-1	X/O	27	40
A2326065	G0656802	Rail By-pass Feed	1-1	X/O	27	39
-	GA080002	Bushing – 6mm	0-1	-	27	35
-	07200040E	Retaining Ring – M4	0-1	-	27	104
-	B0046062	Pressure Plate	0-1	-	27	41
	AF040575	Driven Roller	0-1	-	27	42
08053480	GA080002	Bushing – 6mm	1-1	X/O	27	102-35

Note: Whenever replacing the old Feed Shaft with the new one, the following parts from the above list must all be replaced together as a set:

AA140753, G0656801, G0656802, GA080002, 07200040E



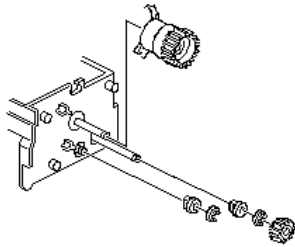
Model: Adonis-C1

Date: 22-Apr-02

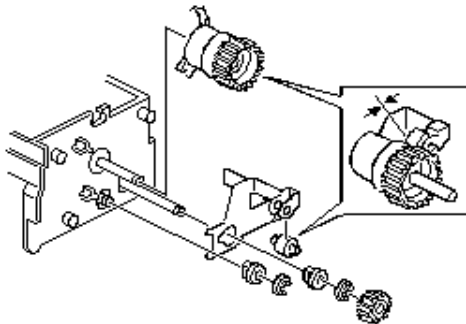
No.: MA283023

Replacement Procedure for parts modified in section A abovePrep:

Remove the Tightener Bracket, Retaining Ring, Bushing and Electrical Clutch as shown below.



1. Replace the Feed Shaft with AA140753.

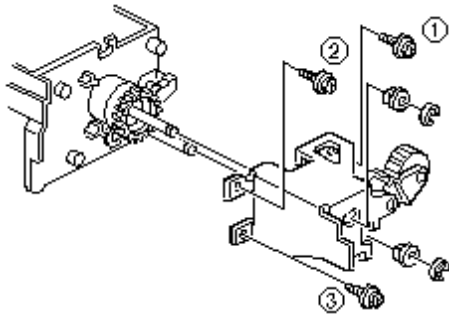


2. Attach the Driven Roller [A] to the Pressure Plate [B], then peel off the outer layers of the double-sided tape (2 places) on the Pressure Plate.
3. Set the Bushing [C] in the hole in the Pressure Plate, then mount the two together onto the Feed Shaft.
Note: Be careful not to let the exposed double-sided tape contact the Side Plate.
4. Set Bushing [D] in the cutout on the side of the Pressure Plate, then push in the Pressure Plate along with the two bushings. After it is set in position, attach e-rings [E] and [F].
5. Press the Pressure Plate firmly against the Side Plate so that the double-sided tape catches and secures the two together.
6. Attach the Gear [G].
7. Attach the Electrical Clutch [H].

Model: Adonis-C1

Date: 22-Apr-02

No.: MA283023

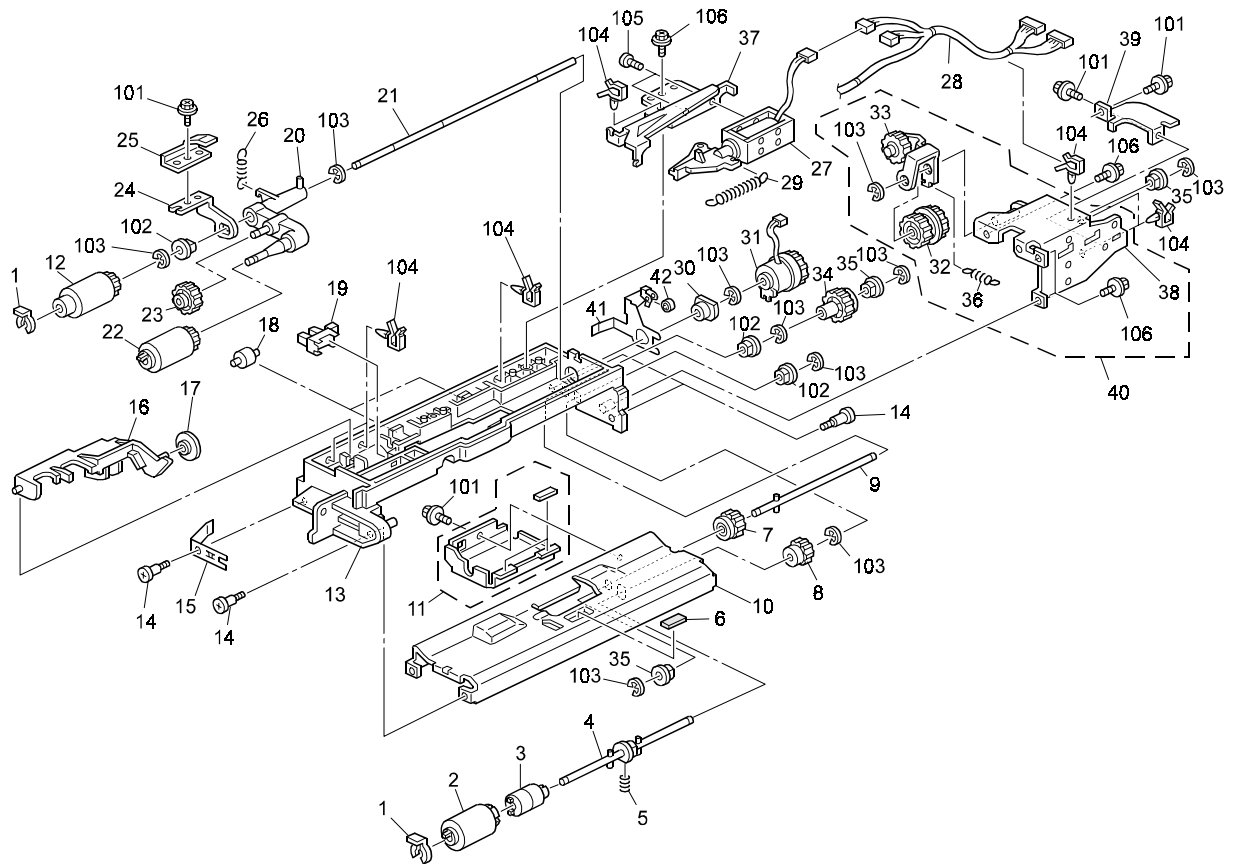


8. Remove the Arm Tightener, Gear and Spring attached to the Tightener Bracket removed in the Prep stage above, then attach them to the new Tightener Bracket [I].
9. Attach the Tightener Bracket [I] and Bushings [J] and [K]. Then, the tighten screws in the order shown.
10. Attach e-rings [L] and [M].

Model: Adonis-C1

Date: 22-Apr-02

No.: MA283023



Model: Adonis-C1		Date: 14-Sep-04	No.: MA283024
Modified Article: Hard Disk		Prepared by: S. Tomoe	
From: 1st Tech. Support Sec. Service Support Dept.			
Reason for Modification:	<input type="checkbox"/> Parts catalog correction <input type="checkbox"/> To facilitate assembly <input type="checkbox"/> Part standardization	<input checked="" type="checkbox"/> Vendor change <input type="checkbox"/> To improve reliability <input type="checkbox"/> Other	<input type="checkbox"/> To meet standards ()

Due to production discontinuation (vendor change), the HDD has been changed as shown below.

Note: There is no change in speed or performance.

Old part number	New part number	Description	Q'ty	Int	Page	Index	Note
A6915863	B5485863	Hard Disk	1-1	0/0	63	24	



Part Change Information List

Date: March 18, 2009

Model	Code	PCIL Number	PCIL Correction	Old part number	New part number	Description	Old Q'ty	New Q'ty	Int	3DPC	Page	Index	Set	Set Int	RTB	Note	Ref Number
Adonis-C1	A283	200903		A2321257	B2981257	CAP:COVER:UPPER	1	1	O/O		13	29					V0803798
Adonis-C1	A284	200903		A2321257	B2981257	CAP:COVER:UPPER	1	1	O/O		13	29					V0803798
Adonis-C1	A283	200903		AW010048	AW010106	PAPER FEED SENSOR	2	2	O/O		31	17					V0804408
Adonis-C1	A284	200903		AW010048	AW010106	PAPER FEED SENSOR	2	2	O/O		31	17					V0804408



Part Change Information List

Date: December 29, 2009

Model	Code	PCIL Nr.	PCIL Correction	Old part number	New part number	Description	Old Q'ty	New Q'ty	Int	3DPC	Page	Index	Set	Set Int	RTB	Note	Ref. Nr.	ECN Nr.
A-C1	A283	200912		A2326051	B2136051	DC SOLENOID:PICKUP:SUB-ASS'Y	1	1	X/O		27	27					V0903006	4071464
A-C1	A284	200912		A2326051	B2136051	DC SOLENOID:PICKUP:SUB-ASS'Y	1	1	X/O		27	27					V0903006	4071464



Part Change Information List

Date: February 26, 2010

Model	Code	PCIL Nr.	PCIL Correction	Old part number	New part number	Description	Old Q'ty	New Q'ty	Int	3DPC	Page	Index	Set	Set Int	RTB	Note	Ref. Nr.	ECN Nr.
A-C1	A283	201002		AW020102	AW020126	PHOTOINTERRUPTOR	1	1	X/O		55	9					T0101092	1010943
A-C1	A283	201002		AW020126	AW020158	PAPER FEED SENSOR	1	1	X/O		55	9					V0903006	4071464
A-C1	A284	201002		AW020102	AW020126	PHOTOINTERRUPTOR	1	1	X/O		55	9					T0101092	1010943
A-C1	A284	201002		AW020126	AW020158	PAPER FEED SENSOR	1	1	X/O		55	9					V0903006	4071464



Part Change Information List

Date: March 31, 2010

Model	Code	PCIL Nr.	PCIL Correction	Old part number	New part number	Description	Old Q'ty	New Q'ty	Int	3DPC	Page	Index	Set	Set Int	RTB	Note	Ref. Nr.	ECN Nr.
A-C1	A283	201003		A2324484	B2134484	DC SOLENOID:EXIT:ASS'Y	1	1	X/O		49	27					V0903006	4071464
A-C1	A284	201003		A2324484	B2134484	DC SOLENOID:EXIT:ASS'Y	1	1	X/O		49	27					V0903006	4071464
A-C1	A283	201003		A2324793	B0774793	BRACKET:LINK	1	1	O/O		51	8					T0202855	2090423
A-C1	A283	201003		B0774793	B2134793	BRACKET:LINK	1	1	X/O		51	8					V1000184	
A-C1	A284	201003		A2324793	B0774793	BRACKET:LINK	1	1	O/O		51	8					T0202855	2090423
A-C1	A284	201003		B0774793	B2134793	BRACKET:LINK	1	1	X/O		51	8					V1000184	



Part Change Information List

Date: April 30, 2010

Model	Code	PCIL Nr.	PCIL Correction	Old part number	New part number	Description	Old Q'ty	New Q'ty	Int	3DPC	Page	Index	Set	Set Int	RTB	Note	Ref. Nr.	ECN Nr.
A-C1	A283	201004		A2326049	B2136049	BRACKET:DC SOLENOID	1	1	X/O		27	37					V0903006	4071464
A-C1	A284	201004		A2326049	B2136049	BRACKET:DC SOLENOID	1	1	X/O		27	37					V0903006	4071464
A-C1	A283	201004		AF021059	AF021083	REGISTRATION ROLLER:DRIVEN:MM16	1	1	X/O		33	8					V1000184	
A-C1	A284	201004		AF021059	AF021083	REGISTRATION ROLLER:DRIVEN:MM16	1	1	X/O		33	8					V1000184	



Part Change Information List

Date: Jun 30, 2010

Model	Code	PCIL Nr.	PCIL Correction	Old part number	New part number	Description	Old Q'ty	New Q'ty	Int	3DPC	Page	Index	Set	Set Int	RTB	Note	Ref. Nr.	ECN Nr.
A-C1	A283	201006		B2136049	B2136048	PICKUP SOLENOID	1	1	X/O		27	37					V1001108	
A-C1	A284	201006		B2136049	B2136048	PICKUP SOLENOID	1	1	X/O		27	37					V1001108	



Part Change Information List

Date: Jul 30, 2010

Model	Code	PCIL Nr.	PCIL Correction	Old part number	New part number	Description	Old Q'ty	New Q'ty	Int	3DPC	Page	Index	Set	Set Int	RTB	Note	Ref. Nr.	ECN Nr.
A-C1	A283	201007		A2323917	B0773917	LEVER:RELEASE:PRESSURE:PEEN	1	1	X/O		41	14					V1001306	
A-C1	A283	201007		B0773917	B2133917	LEVER:RELEASE:PRESSURE	1	1	X/O		41	14					V1001307	
A-C1	A284	201007		A2323917	B0773917	LEVER:RELEASE:PRESSURE:PEEN	1	1	X/O		41	14					V1001306	
A-C1	A284	201007		B0773917	B2133917	LEVER:RELEASE:PRESSURE	1	1	X/O		41	14					V1001307	



Part Change Information List

Date: September 30, 2010

Model	Code	PCIL Nr.	PCIL Correction	Old part number	New part number	Description	Old Q'ty	New Q'ty	Int	3DPC	Page	Index	Set	Set Int	RTB	Note	Ref. Nr.	ECN Nr.
A-C1	A283	201009		A2322990	B2132990	SUPPORTER:PAPER TRAY	2	2	X/O		67	12					V1000184	
A-C1	A284	201009		A2322990	B2132990	SUPPORTER:PAPER TRAY	2	2	X/O		67	12					V1000184	



Part Change Information List

Date: March 31, 2011

Model	Code	PCIL Nr.	PCIL Correcti on	Old part number	New part number	Description	Old Q'ty	New Q'ty	Int	3DPC	Page	Index	Set	Set Int	RTB	Note	Ref. Nr.	ECN Nr.
A-C1	A283	201103		A2325428	B0825428	HARNESS:PAPER FEED UNIT	2	2	O/O		31	30					V1002870	
A-C1	A284	201103		A2325428	B0825428	HARNESS:PAPER FEED UNIT	2	2	O/O		31	30					V1002870	



Part Change Information List

Date: February 29, 2012

Model	Code	PCIL Nr.	PCIL Correction	Old part number	New part number	Description	Old Q'ty	New Q'ty	Int	3DPC	Page	Index	Set	Set Int	RTB	Note	Ref. Nr.	ECN Nr.
A-C1	A283	201202		AW020098	AW020179	PAPER FEED SENSOR	1	1	X/O		49	1					V1200119	
A-C1	A284	201202		AW020098	AW020179	PAPER FEED SENSOR	1	1	X/O		49	1					V1200119	



Part Change Information List

Date: May 8, 2015

Model	Code	PCIL Number	PCIL Correction	Old part number	New part number	Description	Old Q'ty	New Q'ty	Int	3DPC	Page	Index	Set	Set Int	RTB	Note	Ref Number	ECN Number
A-C1	A283	201504		AA080234	AA080281	BUSHING - 12X18X5.5	1	1	O/O	N	45	30					V1401590	
A-C1	A284	201504		AA080234	AA080281	BUSHING - 12X18X5.5	1	1	O/O	N	45	30					V1401590	
A-C1	A283	201504		AZ320086	AZ320145	POWER PACK:CBT	1	1	X/O	N	61	5					V1402610	
A-C1	A284	201504		AZ320086	AZ320145	POWER PACK:CBT	1	1	X/O	N	61	5					V1402610	



Part Change Information List

Date: June 5, 2018

Model	Code	PCIL Number	PCIL Correction	Old part number	New part number	Description	Old Q'ty	New Q'ty	Int	3DPC	Page	Index	Set	Set Int	RTB	Note	Ref Number	ECN Number
A-C1	A283	201805		B2475238	B2479101	HDD:PATH2:40GB_CLIP:MASTER:RC	2	2	O/O	N	69	1					V1702208	
A-C1	A284	201805		B2475238	B2479101	HDD:PATH2:40GB_CLIP:MASTER:RC	2	2	O/O	N	69	1					V1702208	