

Model: Triton-C1		Date: 28-Oct-04	No.: MB186001
Modified Article: Clutch & IC		Prepared by: M. Tsuyuki	
From: 1st Tech. Support Sec. Service Support Dept.			
Reason for Modification:	<input checked="" type="checkbox"/> Parts catalog correction <input type="checkbox"/> To facilitate assembly <input type="checkbox"/> Part standardization	<input type="checkbox"/> Vendor change <input type="checkbox"/> To improve reliability <input type="checkbox"/> Other	<input type="checkbox"/> To meet standards ()

Please correct your parts catalog as follows:

Old part number	New part number	Description	Q'ty	Int	Page	Index
B1862541	B1862041	Clutch(4406584810) Clutch(4406584800)	1	X/O	25	50
B1867514	B1867534	IC-M38T35Y-70PC1(6LA99413000) IC-M38T35Y-70PC1(6LA99413100)	1	X/O	19	13
B1867512	B1867532	IC-M48Z35Y(6LA97605100) IC-M48Z35Y(6LA99414000)	1	X/O	65	18
B1867520	B1867525	IC-M27C160-100F1(6LA97656000)(LGC) IC-M27C160-100F1(6LA97656100)(LGC)	1	X/O	75	14
B1867523	B1867526	IC-M27C160-100F1(6LA51506600)(SYS) IC-M27C160-100F1(6LA99497000)(SYS)	1	X/O	75	17
B1867524	B1867527	IC-M27C160-100F1(6LA515123000)(UI) IC-M27C160-100F1(6LA99499000)(UI)	1	X/O	75	18

Model: Triton-C1		Date: 7-Dec-04	No.: MB186002
Modified Article: ICs		Prepared by: M. Tsuyuki	
From: 1st Tech. Support Sec. Service Support Dept.			
Reason for Modification:	<input checked="" type="checkbox"/> Parts catalog correction <input type="checkbox"/> To facilitate assembly <input type="checkbox"/> Part standardization	<input type="checkbox"/> Vendor change <input type="checkbox"/> To improve reliability <input type="checkbox"/> Other	<input type="checkbox"/> To meet standards ()

Old part number	New part number	Description	Q'ty	Int	Page	Index
B1867521	B1867541	IC-M27C160-100F1(6LA99496000)(SYS) IC-M27C160-100F1(6LA99496100)(SYS)	1	X/O	75	15
B1867522	B1867542	IC-M27C160-100F1(6LA99498000)(UI) IC-M27C160-100F1(6LA99498100)(UI)	1	X/O	75	16
B1867526	B1867546	IC-M27C160-100F1(6LA99497000)(SYS) IC-M27C160-100F1(6LA99497100)(SYS)	1	X/O	75	17
B1867527	B1867547	IC-M27C160-100F1(6LA99499000)(UI) IC-M27C160-100F1(6LA99499100)(UI)	1	X/O	75	18

Change: New functions were added to the firmware:

- 1) "Adjustment of the Gray Image Uniformity Output from the Controller"
- 2) "One-touch Operation Paper Exit in Reverse Sequence"

Reason: See RTB #RB186009 for details.

Cut-in Serial Numbers:

B186-17: K3240700001~

Model: Triton-C1		Date: 7-Dec-04	No.: MB186003
Modified Article: PCU		Prepared by: M. Tsuyuki	
From: 1st Tech. Support Sec. Service Support Dept.			
Reason for Modification:	<input checked="" type="checkbox"/> Parts catalog correction <input type="checkbox"/> To facilitate assembly <input type="checkbox"/> Part standardization	<input type="checkbox"/> Vendor change <input type="checkbox"/> To improve reliability <input type="checkbox"/> Other	<input type="checkbox"/> To meet standards ()

Old part number	New part number	Description	Q'ty	Int	Page	Index
-	B1862899	PCU (6LA99246000)	1		35	*

Change: A part was added.

Reason: This part was missing from the Parts Catalog.

Note: This PCU includes 4 drums and 4 development units.

Model: Triton-C1		Date: 12-Jan-05	No.: MB186004
Modified Article: Platen Cover Sheet		Prepared by: M. Tsuyuki	
From: 1st Tech. Support Sec. Service Support Dept.			
Reason for Modification:	<input type="checkbox"/> Parts catalog correction <input type="checkbox"/> To facilitate assembly <input type="checkbox"/> Part standardization	<input type="checkbox"/> Vendor change <input type="checkbox"/> To improve reliability <input checked="" type="checkbox"/> Other	<input type="checkbox"/> To meet standards ()

Old part number	New part number	Description	Q'ty	Int	Page	Index
	B1867902	Platen Cover Sheet	1		3	30

The Platen Cover Sheet has been registered as a spare part.

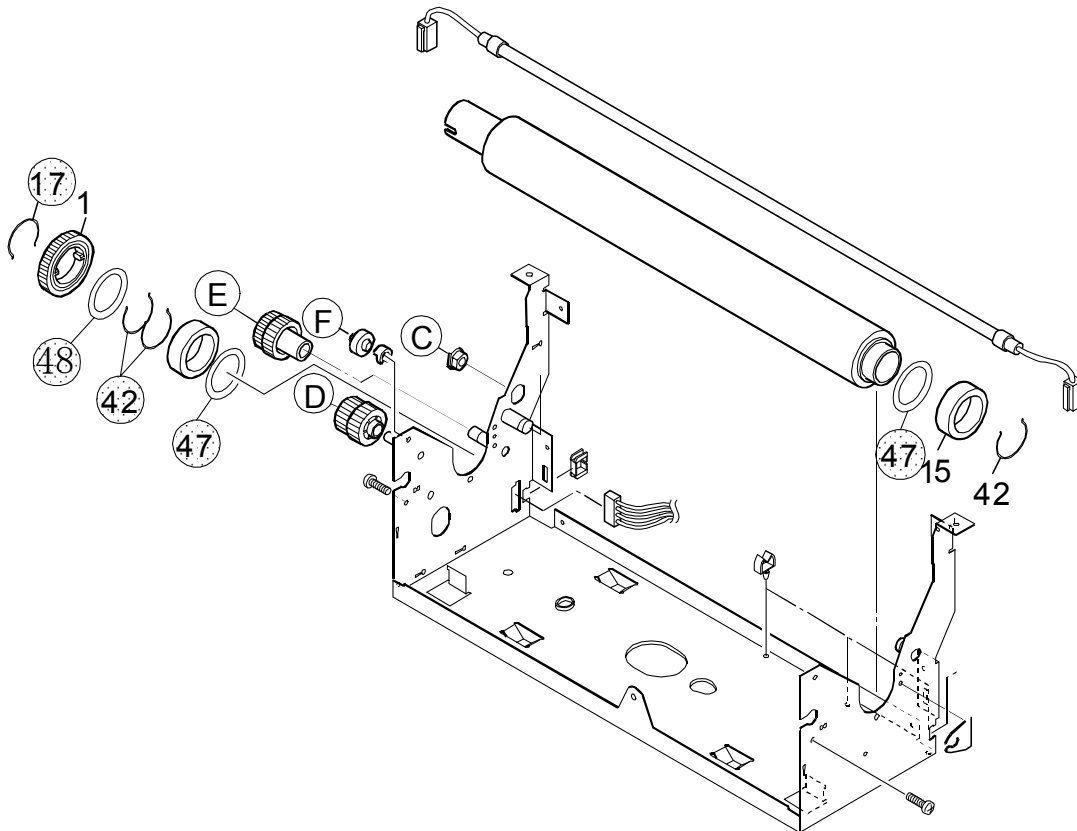
Model: Triton-C1		Date: 18-Mar-05	No.: MB186005
Modified Article: Parts Catalog		Prepared by: M. Tsuyuki	
From: 1st Tech. Support Sec. Service Support Dept.			
Reason for Modification:	<input checked="" type="checkbox"/> Parts catalog correction <input type="checkbox"/> To facilitate assembly <input type="checkbox"/> Part standardization	<input type="checkbox"/> Vendor change <input type="checkbox"/> To improve reliability <input type="checkbox"/> Other	<input type="checkbox"/> To meet standards ()

Old part number	New part number	Description	Q'ty	Int	Page	Index
B1864012		Ring (44217743000)	1	X/O	47	17
	B1864112	Ring (6LA51170000)	1			
	B1864031	Spring (44217749000)	2→3		47	42
	B1864117	Washer (6LA51171000)	2		47	47
	B1864122	Washer (6LA51172000)	1		47	48

Change:

- 1) The Description and P/N for the ring was changed.
- 2) The quantity for the spring was increased.
- 3) Washers were added.

Reason: Parts Catalog correction.



Model: Triton-C1		Date: 18-Mar-05	No.: MB186006
Modified Article: Damp Heater Kit		Prepared by: M. Tsuyuki	
From: 1st Tech. Support Sec. Service Support Dept.			
Reason for Modification:	<input type="checkbox"/> Parts catalog correction <input type="checkbox"/> To facilitate assembly <input type="checkbox"/> Part standardization	<input type="checkbox"/> Vendor change <input type="checkbox"/> To improve reliability <input checked="" type="checkbox"/> Other	<input type="checkbox"/> To meet standards ()

Old part number	New part number	Description	Q'ty	Int	Page	Index
	B1869530	Damp Heater Kit	1		75	19

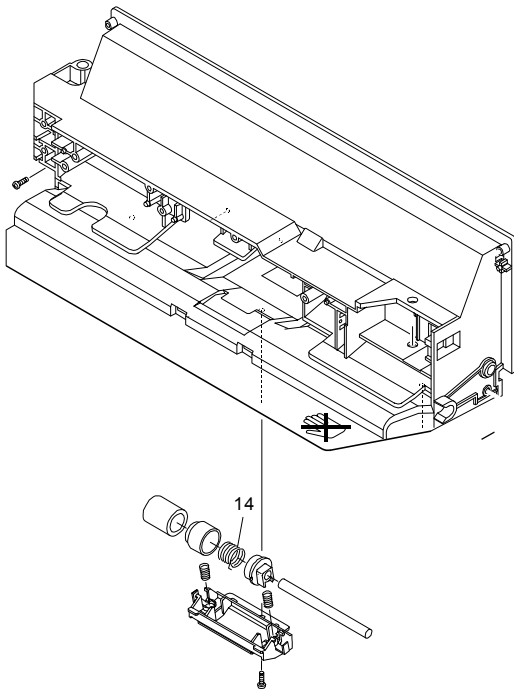
Change/Reason: This part was missing from the Parts Catalog.

Model: Triton-C1		Date: 25-Mar-05	No.: MB186007
Modified Article: Spring		Prepared by: M. Tsuyuki	
From: 1st Tech. Support Sec. Service Support Dept.			
Reason for Modification:	<input type="checkbox"/> Parts catalog correction <input type="checkbox"/> To facilitate assembly <input checked="" type="checkbox"/> Part standardization	<input type="checkbox"/> Vendor change <input type="checkbox"/> To improve reliability <input type="checkbox"/> Other	<input type="checkbox"/> To meet standards ()

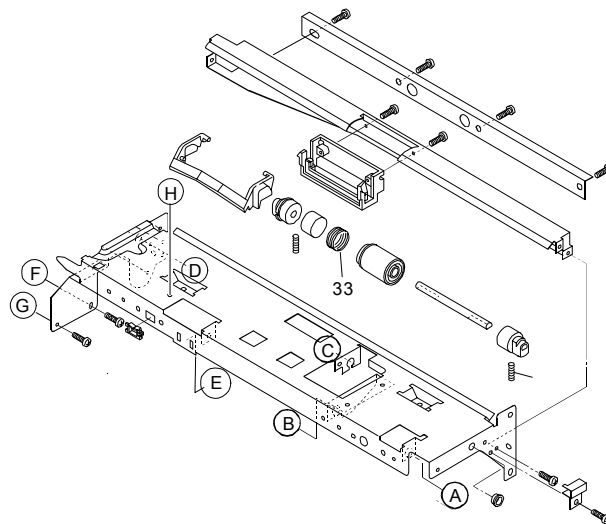
Old part number	New part number	Description	Q'ty	Int	Page	Index
B1862554	B1862054	Spring (4401784210) Spring (4406347650)	2	O/O	25 29	14 33

Change/Reason: Parts standardization with another model.

12. By-Pass Feed Unit



14. Paper Registration 1



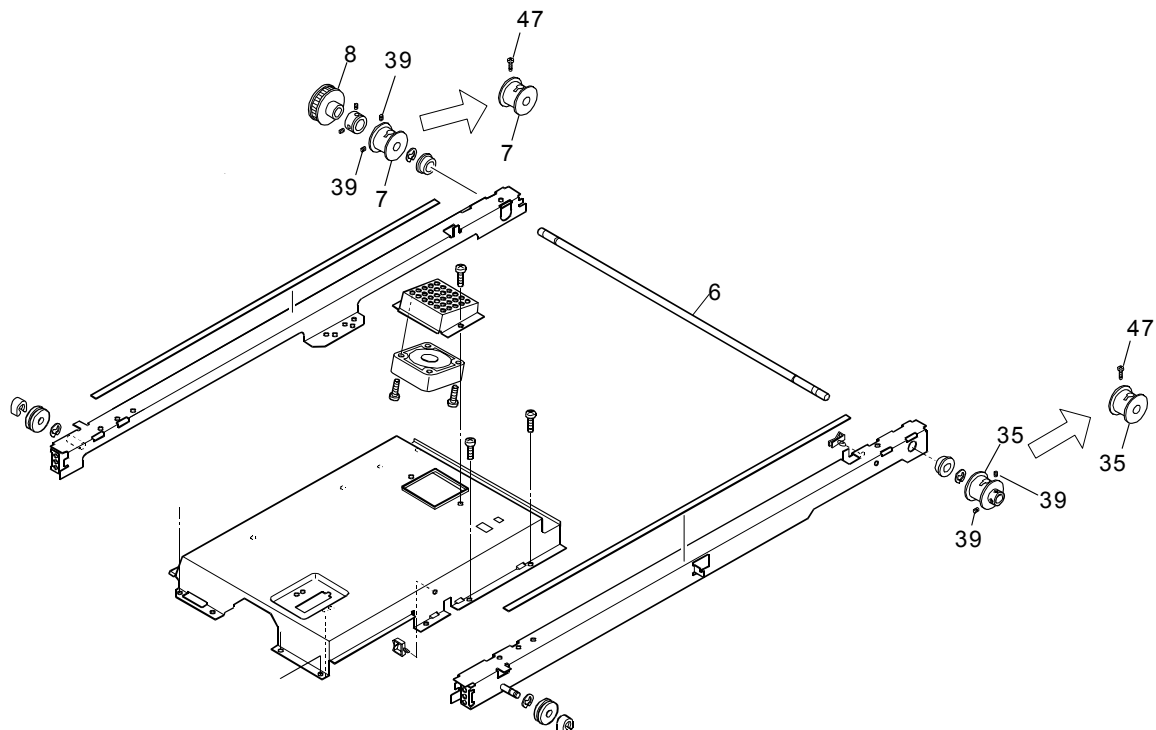
Model: Triton-C1		Date: 25-Mar-05	No.: MB186008
Modified Article: Scanner		Prepared by: M. Tsuyuki	
From: 1st Tech. Support Sec. Service Support Dept.			
Reason for Modification:	<input type="checkbox"/> Parts catalog correction <input type="checkbox"/> To facilitate assembly <input type="checkbox"/> Part standardization	<input type="checkbox"/> Vendor change <input type="checkbox"/> To improve reliability <input checked="" type="checkbox"/> Other	<input type="checkbox"/> To meet standards ()

Old part number	New part number	Description	Q'ty	Int	Page	Index
B1861626	B1861686	Scanner Drive Shaft (4406517930) Scanner Drive Shaft (6LA97447000)	1	X/X	9	6
B1861627	B1861687	Rear Wire Pulley (4408634830) Wire Pulley (6LA01742000)	1	X/X	9	7
B1861628	B1861688	Pulley – 24T (4408675410) Pulley – 24T (6LA97448000)	1	X/X	9	8
B1861647	B1861687	Front Wire Pulley (4408634790) Wire Pulley (6LA01742000)	1	X/X	9	35
B1867046	B1867083	Set Screw – M4X6 (X0-00736000) Screw – M3X8 (X0-00077000)	9->5 0->2	X/X	9	39 47

Change: Four set screws in the illustration were deleted, and two pan head screws were added.

Reason: To attach the wire pulley to the shaft more securely.

Note: The interchangeability of the old and new parts is O/O as a set.



Model: Triton-C1

Date: 25-Mar-05

No.: MB186008

CUT-IN SERIAL NUMBERSModel:
B186-17From:
K3241100001

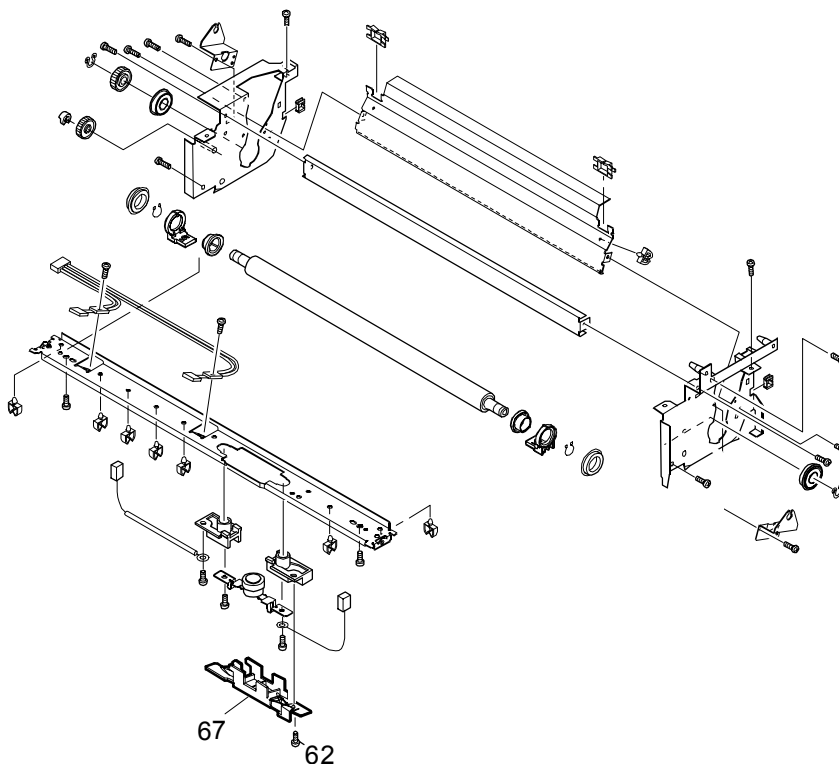
Model: Triton-C1		Date: 6-Jun-05	No.: MB186009
Modified Article: Thermostat Cover		Prepared by: M. Tsuyuki	
From: 1st Tech. Support Sec. Service Support Dept.			
Reason for Modification:	<input type="checkbox"/> Parts catalog correction <input type="checkbox"/> To facilitate assembly <input type="checkbox"/> Part standardization	<input type="checkbox"/> Vendor change <input type="checkbox"/> To improve reliability <input checked="" type="checkbox"/> Other	<input type="checkbox"/> To meet standards ()

Old part number	New part number	Description	Q'ty	Int	Page	Index
	B1864143	Thermostat Cover (6LA97349000)	1		49	67

Change: A thermostat cover was added.

Reason: To provide for increased work safety during factory assembly.

24. Fusing Unit 2



CUT-IN SERIAL NUMBERS

Model:
B186-17

From:
K3241100001~

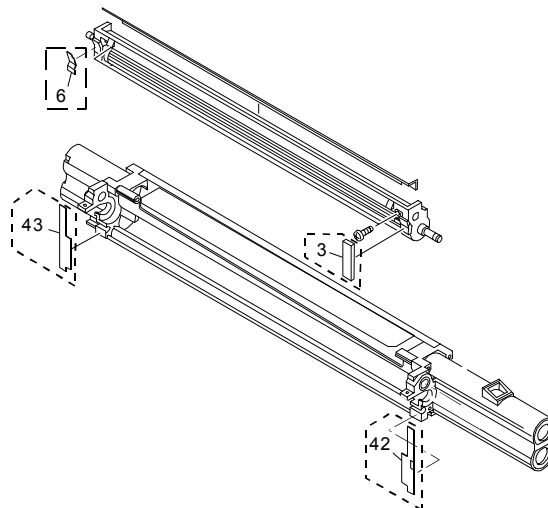
Model: Triton-C1		Date: 6-Jun-05	No.: MB186010
Modified Article: Development unit		Prepared by: M. Tsuyuki	
From: 1st Tech. Support Sec. Service Support Dept.			
Reason for Modification:	<input type="checkbox"/> Parts catalog correction <input type="checkbox"/> To facilitate assembly <input type="checkbox"/> Part standardization	<input type="checkbox"/> Vendor change <input type="checkbox"/> To improve reliability <input checked="" type="checkbox"/> Other	<input type="checkbox"/> To meet standards ()

Old part number	New part number	Description	Q'ty	Int	Page	Index
B1863001	B1863081	Development Unit – Y (44218040000) Development Unit – Y (6LA51193000)	1	O/O	41	*
B1863002	B1863082	Development Unit – MCK (44218050000) Development Unit – MCK (6LA51194000)	3	O/O	41	*

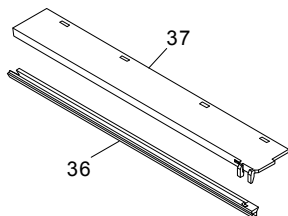
Change: The development unit cover (#37), holder (#36) and side seals (#3, 6, 42, 43) were added to the development unit.

Reason: To facilitate assembly in the field.

20. Development Unit 1



18. Drum Section 2



CUT-IN SERIAL NUMBERS

Model:
B186-17

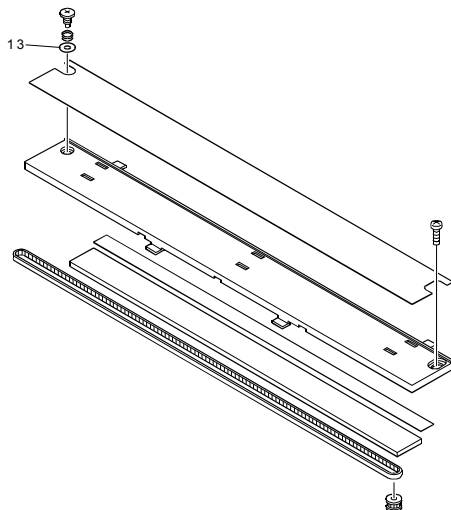
From:
Service Parts Only

Model: Triton-C1		Date: 6-Jun-05	No.: MB186011
Modified Article: Pinion Holder / Wahser		Prepared by: M. Tsuyuki	
From: 1st Tech. Support Sec. Service Support Dept.			
Reason for Modification:	<input type="checkbox"/> Parts catalog correction <input type="checkbox"/> To facilitate assembly <input type="checkbox"/> Part standardization	<input type="checkbox"/> Vendor change <input type="checkbox"/> To improve reliability <input checked="" type="checkbox"/> Other	<input type="checkbox"/> To meet standards ()

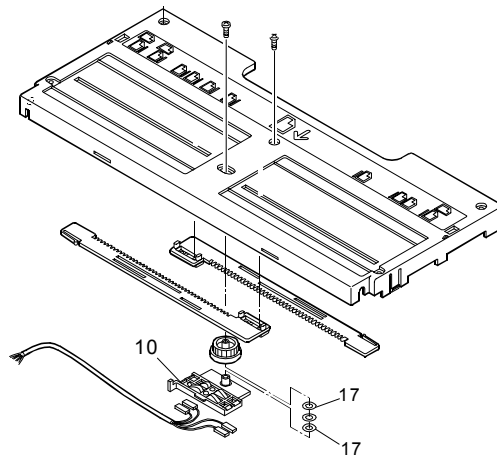
Old part number	New part number	Description	Q'ty	Int	Page	Index
B1862581	B1862081	Pinion Holder (44218419000) Pinion Holder (6LA78990000)	1	O/O	23	10
B1867010	B1867084	Washer (4842040454) Washer (6LA78908000)	2 1	O/O	23 11	17 13

Change/Reason: Parts number standardization by the machine vendor.

5. Scanner Unit 2



11. By-pass Tray



Model: Triton-C1		Date: 6-Jun-05	No.: MB186012
Modified Article: By-Pass Table		Prepared by: M. Tsuyuki	
From: 1st Tech. Support Sec. Service Support Dept.			
Reason for Modification:	<input checked="" type="checkbox"/> Parts catalog correction <input type="checkbox"/> To facilitate assembly <input type="checkbox"/> Part standardization	<input type="checkbox"/> Vendor change <input type="checkbox"/> To improve reliability <input type="checkbox"/> Other	<input type="checkbox"/> To meet standards ()

Incorrect Part Number	Correct Part Number	Description	Q'ty	Int	Page	Index
B1862571	B1862471	By-Pass Table Ass'y (6LA51160000)	1	X/O	23	16

Change/Reason: The part number in the Parts Catalog was corrected.



Reissued: 28-Sep-05

Model: Triton-C1	Date: 2-Aug-05	No.: MB186013a
------------------	----------------	----------------

MB Correction

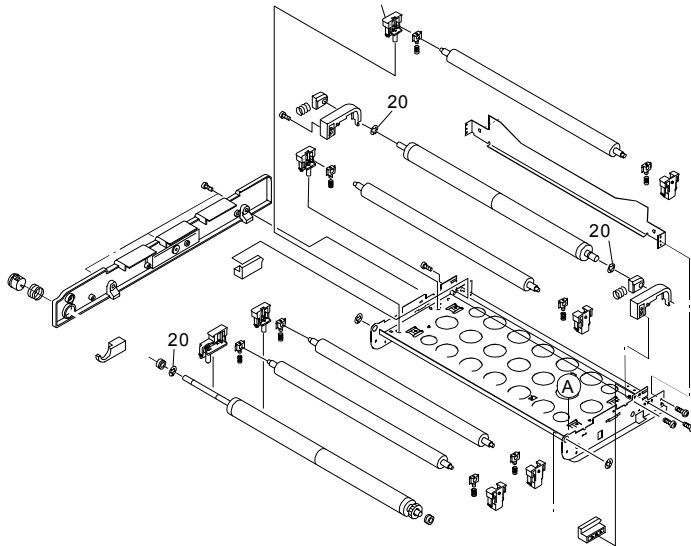
The items in bold italics have been corrected or added.

Modified Article: Plate		Prepared by: M. Tsuyuki	
From: 1st Tech. Support Sec. Service Support Dept.			
Reason for Modification:	<input checked="" type="checkbox"/> Parts catalog correction	<input type="checkbox"/> Vendor change	<input type="checkbox"/> To meet standards ()
	<input type="checkbox"/> To facilitate assembly	<input type="checkbox"/> To improve reliability	
	<input type="checkbox"/> Part standardization	<input type="checkbox"/> Other	

Change/Reason: The Parts Catalog was corrected as follows.

Old part number	New part number	Description	Q'ty	Int	Page	Index
B1864501		Plate (44218264000)	3->0		53	20

26. Transport Belt Unit 1



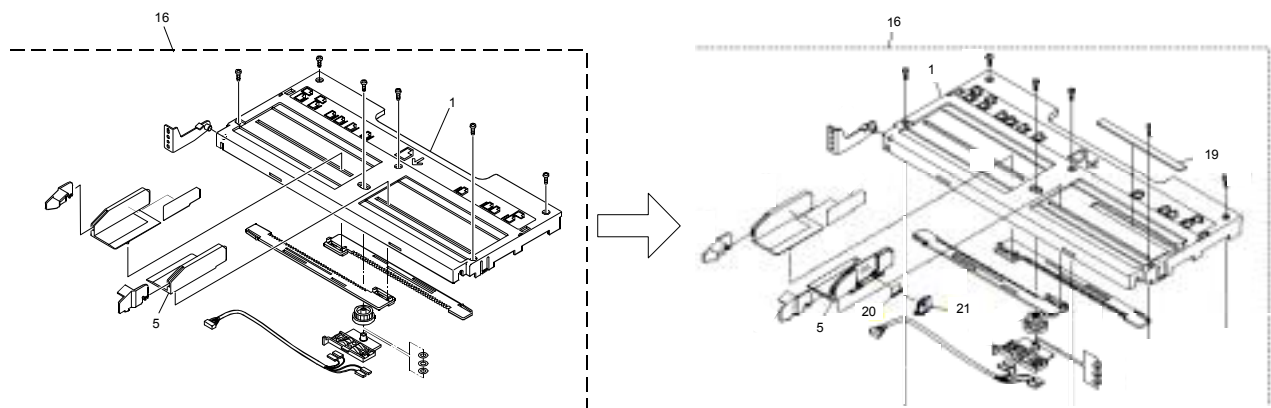
Model: Triton-C1		Date: 30-Aug-05	No.: MB186014
Modified Article: By-pass Table		Prepared by: M. Tsuyuki	
From: 1st Tech. Support Sec. Service Support Dept.			
Reason for Modification:	<input type="checkbox"/> Parts catalog correction <input type="checkbox"/> To facilitate assembly <input type="checkbox"/> Part standardization	<input type="checkbox"/> Vendor change <input checked="" type="checkbox"/> To improve reliability <input type="checkbox"/> Other	<input type="checkbox"/> To meet standards ()

Change: The following parts were added or changed.

Reason: To make it easier for the paper guides to hold the paper in place.

Note: The “SP Table Ass’y” contains all new parts listed below. If you replace this assembly, you can replace all new parts at the same time.

Old part number	New part number	Description	Q'ty	Int	Page	Index
B1862471	B1862371	Table Ass'y (6LE72972000)	1	X/X	23	16
B1862572	B1862472	By-pass Table (6LA51161200)	1	X/O	23	1
B1862576	B1862476	Front Paper Guide (6LE72981000)	1	X/X	23	5
	B1862486	Guide Sheet (6LE2982000)	1		23	19
	B1862487	Guide Lever (6LA79104100)	1		23	21
	B1862488	Guide Spring (6LA79105000)	1		23	20
B1862590	B1862490	Feed Frame (6LE72971000)	1	X/O	25	1
	B1862489	SP Table Ass'y (6LE72970000)	1		23	*



CUT-IN SERIAL NUMBERS

Model: B186-17 From: K3250400001




Model: Triton-C1		Date: 7-Jun-07	No.: MB186015
Modified Article: Temperature/Humidity sensor		Prepared by: Yuji Mimura	
From: 1st Tech. Support Sec. Service Support Dept.			
Reason for Modification:	<input checked="" type="checkbox"/> Parts catalog correction <input type="checkbox"/> Vendor change <input type="checkbox"/> Other <input type="checkbox"/> To facilitate assembly <input type="checkbox"/> To improve reliability <input type="checkbox"/> To meet standards <input type="checkbox"/> Part standardization <input type="checkbox"/> Product Safety ()		

Change/Reason

The parts catalog was corrected as follows

Old part number	New part number	Description	Q'ty	Int	Page	Index	Note
B1861508		Connector(4406565580)	1	X/O	1	19	
	B1867508	SENSOR:TEMP/HUMI					

Model: Triton-C1		Date: 23-Apr-08	No.: MB186016
Modified Article: Changed to environmentally types		Prepared by: Y.Mimura	
From: 1st Tech. Support Sec. Service Support Dept.			
Reason for Modification:	<input type="checkbox"/> Parts catalog correction <input type="checkbox"/> Vendor change <input checked="" type="checkbox"/> Other <input type="checkbox"/> To facilitate assembly <input type="checkbox"/> To improve reliability <input type="checkbox"/> To meet standards <input type="checkbox"/> Part standardization <input type="checkbox"/> Product Safety ()		

Old part number	New part number	Description	Q'ty	Int	Page	Index	Note
B1861111		Switch(4402322720)	1	X/O	66	1	
	B1861311	Switch (E-08495000)					
B1861811		Screw(44201086000)	1	X/O	18	31	
	B1861313	Screw (6LE82485000)					
B1861813		Screw (44201254000)	1	X/O	18	33	
	B1861511	Screw (6LE82486000)					

Change:

The materials for these parts were changed to more environmentally-friendly types.

Reason:

Ricoh's ongoing application of in-house environmental standards.



Part Change Information List

Date: April 30, 2010

Model	Code	PCIL Nr.	PCIL Correction	Old part number	New part number	Description	Old Q'ty	New Q'ty	Int	3DPC	Page	Index	Set	Set Int	RTB	Note	Ref. Nr.	ECN Nr.
TR-C1	B186	201004		B1861734	B1861784	INVERTER:44219860000	1	1	O/O		13	7					V0903228	
TR-C1	B186	201004		B1861784	B1869714	INVERTER:44219860000	1	1	O/O		13	7					V0903228	



Part Change Information List

Date: May 31, 2010

Model	Code	PCIL Nr.	PCIL Correction	Old part number	New part number	Description	Old Q'ty	New Q'ty	Int	3DPC	Page	Index	Set	Set Int	RTB	Note	Ref. Nr.	ECN Nr.
TR-C1	B186	201005		B1867009	B1869716	TAPPING SCREW - M3X6(X0-02592000)	281	281	O/O		9	43					V1000195	
TR-C1	B186	201005		B1867009	B1869716	TAPPING SCREW - M3X6(X0-02592000)	281	281	O/O		11	14					V1000195	
TR-C1	B186	201005		B1867009	B1869716	TAPPING SCREW - M3X6(X0-02592000)	281	281	O/O		17	43					V1000195	
TR-C1	B186	201005		B1867009	B1869716	TAPPING SCREW - M3X6(X0-02592000)	281	281	O/O		19	34					V1000195	
TR-C1	B186	201005		B1867009	B1869716	TAPPING SCREW - M3X6(X0-02592000)	281	281	O/O		25	59					V1000195	
TR-C1	B186	201005		B1867009	B1869716	TAPPING SCREW - M3X6(X0-02592000)	281	281	O/O		27	29					V1000195	
TR-C1	B186	201005		B1867009	B1869716	TAPPING SCREW - M3X6(X0-02592000)	281	281	O/O		29	58					V1000195	
TR-C1	B186	201005		B1867009	B1869716	TAPPING SCREW - M3X6(X0-02592000)	281	281	O/O		31	46					V1000195	
TR-C1	B186	201005		B1867009	B1869716	TAPPING SCREW - M3X6(X0-02592000)	281	281	O/O		33	53					V1000195	
TR-C1	B186	201005		B1867009	B1869716	TAPPING SCREW - M3X6(X0-02592000)	281	281	O/O		35	67					V1000195	
TR-C1	B186	201005		B1867009	B1869716	TAPPING SCREW - M3X6(X0-02592000)	281	281	O/O		39	30					V1000195	
TR-C1	B186	201005		B1867009	B1869716	TAPPING SCREW - M3X6(X0-02592000)	281	281	O/O		45	56					V1000195	
TR-C1	B186	201005		B1867009	B1869716	TAPPING SCREW - M3X6(X0-02592000)	281	281	O/O		47	25					V1000195	
TR-C1	B186	201005		B1867009	B1869716	TAPPING SCREW - M3X6(X0-02592000)	281	281	O/O		49	60					V1000195	
TR-C1	B186	201005		B1867009	B1869716	TAPPING SCREW - M3X6(X0-02592000)	281	281	O/O		51	34					V1000195	
TR-C1	B186	201005		B1867009	B1869716	TAPPING SCREW - M3X6(X0-02592000)	281	281	O/O		53	47					V1000195	
TR-C1	B186	201005		B1867009	B1869716	TAPPING SCREW - M3X6(X0-02592000)	281	281	O/O		55	36					V1000195	
TR-C1	B186	201005		B1867009	B1869716	TAPPING SCREW - M3X6(X0-02592000)	281	281	O/O		57	47					V1000195	
TR-C1	B186	201005		B1867009	B1869716	TAPPING SCREW - M3X6(X0-02592000)	281	281	O/O		59	42					V1000195	
TR-C1	B186	201005		B1867009	B1869716	TAPPING SCREW - M3X6(X0-02592000)	281	281	O/O		61	26					V1000195	
TR-C1	B186	201005		B1867009	B1869716	TAPPING SCREW - M3X6(X0-02592000)	281	281	O/O		63	46					V1000195	
TR-C1	B186	201005		B1867009	B1869716	TAPPING SCREW - M3X6(X0-02592000)	281	281	O/O		65	21					V1000195	
TR-C1	B186	201005		B1867009	B1869716	TAPPING SCREW - M3X6(X0-02592000)	281	281	O/O		67	30					V1000195	
TR-C1	B186	201005		B1867009	B1869716	TAPPING SCREW - M3X6(X0-02592000)	281	281	O/O		69	42					V1000195	
TR-C1	B186	201005		B1867009	B1869716	TAPPING SCREW - M3X6(X0-02592000)	281	281	O/O		71	30					V1000195	
TR-C1	B186	201005		B1867009	B1869716	TAPPING SCREW - M3X6(X0-02592000)	281	281	O/O		73	49					V1000195	



Part Change Information List

Date: Aug 31, 2010

Model	Code	PCIL Nr.	PCIL Correctio	Old part number	New part number	Description	Old Q'ty	New Q'ty	Int	3DPC	Page	Index	Set	Set Int	RTB	Note	Ref. Nr.	ECN Nr.
Triton-C1	B186	201008		B1861909	B1869717	SNR:HDD:G0-00372000	1	1	O/O		19	30					V1001168	



Part Change Information List

Date: July 1, 2016

Model	Code	PCIL Number	PCIL Correction	Old part number	New part number	Description	Old Q'ty	New Q'ty	Int	3DPC	Page	Index	Set	Set Int	RTB	Note	Ref Number	ECN Number
TR-C1	B186	201607		B1864302	B1869710	TRANSFER BELT(6LE95880000)	1	1	O/O	N	53	2		0			V0903228	