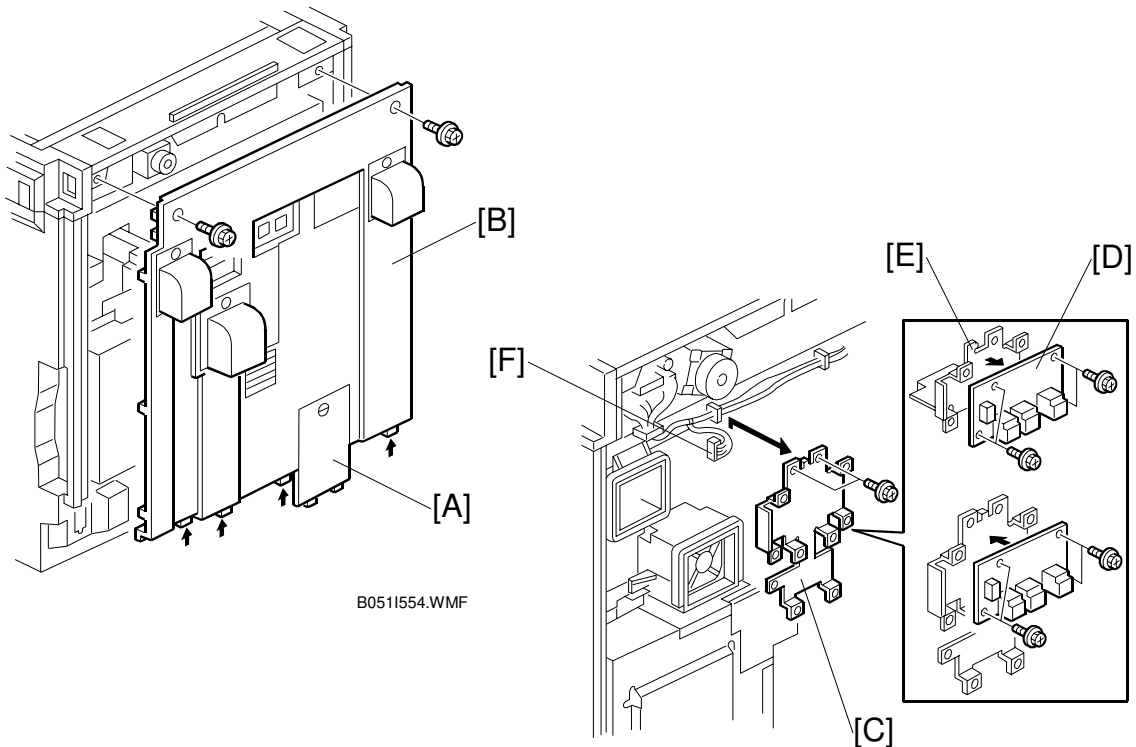

APPENDIX 1 (FOR MODEL U-C1)

1. RSS (REMOTE SERVICE SYSTEM)

1.1 RSS SET UP



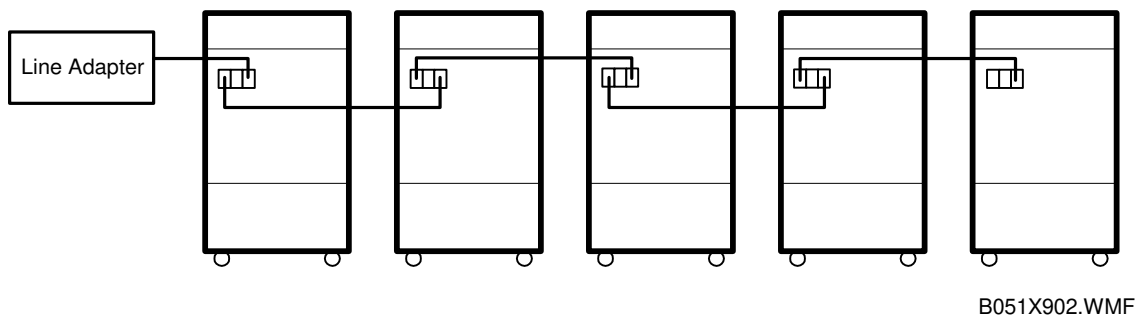
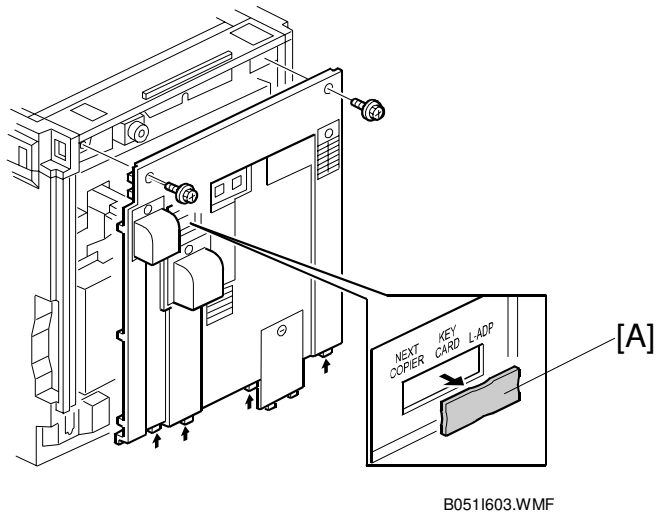
⚠ CAUTION

Unplug the machine power cord before starting the following procedure.

1. Remove the connector cover [A] (1 clip).
2. Remove the rear cover [B] (⚙ x2).
3. Remove the RSS board bracket [C] (⚙ x2).
4. Remove the RSS board [D] from the original bracket [E] (⚙ x2). Then install the RSS board on the bracket [C] which was removed from the machine in step 3.
5. Connect the harness [F] to the RSS board.

When connecting only one machine to the line adapter, skip step 6.

6. Set the jumper switch on the RSS board to 2-3 (default setting: 1-2), unless the machine is in position 5 (see the following diagram).



Machine No.	1	2	3	4	5
Jumper Set	2-3	2-3	2-3	2-3	1-2
PI device code	0	1	2	3	4

7. Remove the cover [A] from the rear cover.
8. Reassemble the machine.
9. Connect the modular cord to the line adapter as shown.
10. Install the line adapter (refer to chapter 2-1 L-ADP Installation Procedure in the CSS Service Manual).
11. Turn on the machine.

When connecting only one machine to the line adapter, skip step 12.

12. Enter the Copier SP mode and set the PI device code with SP5-821 (default 0).

NOTE: After changing the value, turn the main power switch off and on to enable the PI device code.

1.2 SP MODE SETTINGS

After installing the machine and line adapter, change the value of SP5-816 (CSS Function) to 1.

Check the values of the following SP modes. Ensure they are set correctly.

- SP5-501-1 (PM Alarm Interval):
- SP5-504 (Jam Alarm Setting): 3
- SP5-505 (Error Alarm Setting): 40
- SP5-508-1 (CC201 ON/OFF): 1 (On)
- SP5-508-2 (CC101 ON/OFF): 1 (On)
- SP5-508-3 (CC202 ON/OFF): 1 (On)
- SP5-508-4 (CC Call Screening ON/OFF): 1 (Reduced Mode)

NOTE: SP5-507 is only for the Japanese version. Do not change.

1.3 SC CALL

SC Calls

The SC calls are generated according to the SC level as follows.

SC Level	Definition	SC Auto Call Condition
A	Fuser unit SCs which cannot be reset by customer.	SC call is generated immediately.
B	SCs that disable only the features which use the defective item.	SC call is generated immediately. An SC call is generated only once during power on condition (Once an SC call is generated, it will not be generated until the main power switch is turned off and on).
C	SCs that are not shown on the operation panel.	SC call is not generated.
D	SCs caused by incorrect sensor detection which can be reset by turning the main power switch off and on.	SC call is generated for every second SCs.

1.4 CC MANUAL CALL

CC Manual Calls

The CC Manual Call may be generated by the customer when "1: Reduced Mode" is selected in the SP Mode 5508-004 Low Call Mode. The default setting of "SP Mode 5508-004 Low Call Mode" is "1: Reduced Mode".

There are three types of CC calls as follows.

CC Code	Definition
Manual Call: CC 101	<p>When paper jams are detected for number of times specified by "SP Mode 5508-012 CC101 Frequency" consecutively without completing any copy job, one of the following will occur.</p> <ul style="list-style-type: none"> a) CC101 will be automatically generated when "0: Auto Call" is selected in "SP Mode 5508-022 CC101 Manual Call ON/OFF" b) Manual Call key will appear on the operation panel display when "1: Manual Call" is selected in "SP Mode 5508-022 CC101 Manual Call ON/OFF". By pressing Manual Call key, a Manual Call: CC101 is generated immediately. "Manual Call: CC101" will be listed as an MC in the Call List screen of the Concorde system and "Manual Call: CC101" will be indicated in the "Symptom Column" of the call detail screen. <p>The default setting of "SP Mode 5508-022 CC101 Manual Call ON/OFF" is "1: Manual Call".</p>
CC 201	<p>When a paper jam or an original jam condition is not reset for a time specified by "SP Mode 5508-011 CC201 Interval", one of the following will occur.</p> <ul style="list-style-type: none"> a) Beeper sounds five times when "1: Beeper" is selected in "SP Mode 5508-021 CC201 Beeper ON/OFF". b) CC201 will be automatically generated when "0: Auto Call" is selected in "SP Mode 5508-021 CC201 Beeper ON/OFF". <p>The default setting of "SP Mode 5508-21 CC201 Beeper ON/OFF" is "1: Beeper".</p>
Manual Call CC 202	<p>When in a paper jam or an original jam condition and accumulated time of cover open condition exceeds the time specified by "SP Mode 5508-013 CC202 Interval", one of the following will occur after all doors are closed.</p> <ul style="list-style-type: none"> a) CC202 will be automatically generated when "0: Auto Call" is selected in "SP Mode 5508-23 CC202 Manual Call ON/OFF". b) Manual Call key will appear on the operation panel display when "1: Manual Call" is selected in "SP Mode 5508-023 CC202 Manual Call ON/OFF". By pressing Manual Call key, a Manual Call: CC202 is generated immediately. "Manual Call: CC202" will be listed as an MC in the Call List screen of the Concorde system and "Manual Call: CC202" will be indicated in the "Symptom Column" of the call detail screen. <p>The default setting of "SP Mode 5508-023 CC202 Manual Call ON/OFF" is "1: Manual Call".</p>

1.5 CC AUTO CALL

CC Auto Call

The CC Auto Call will be automatically generated when “0: Normal Mode (CC Auto Call)” is selected in “SP Mode 5508-004 Low Call Mode”. The default setting of “SP Mode 5508-004 Low Call Mode” is “1: Reduced Mode”.

There are three types of CC calls as follows.

CC Code	Definition
CC 101	When paper jams are detected five times consecutively without completing any copy job, a CC101 is automatically generated.
CC 201	When a paper jam or an original jam condition is not reset for 15 minutes, a CC201 is automatically generated.
CC 202	When a cover is kept open for 15 minutes, a CC202 is automatically generated.

1.6 ALARM CALL

Alarm Calls

There are 6 types of Alarm Calls as follows:

Type	Definition
PM	When the PM counter reaches the value specified by SP Mode 5513-001, a PM Alarm Call is automatically generated.
Original Count	An original count Alarm Call is automatically generated after the total number of originals specified by SP Mode 5513-002 goes through the ARDF.
SC	When SC Alarm counter reaches 5 times, an SC Alarm Call is automatically generated. The SC Alarm counter counts the number of SCs and it decreases when SC does not occur for a specified number of copies.
Jam	When Jam Alarm counter reaches 10 times, a Jam Alarm Call is automatically generated. The Jam Alarm counter counts the number of paper jam and it decreases when paper jam does not occur for a specified number of copies.
Toner Collection	When the toner overflow sensor detects the toner overflow condition, a Toner Collection Alarm Call is automatically generated.
Oil End	When the oil end sensor detects the oil end condition, an Oil End Alarm Call is automatically generated.

1.7 READ ITEMS

The following table shows the major read items.

Item	Item
Paper end	Total Copies by Copy Mode
Toner end	Total Jobs by Copy/Original
Staple end	Document Server: Scan Counter; SP7-320-1
Toner near end	Document Server: Total Originals by Size
Door open	Doc Server-Total Jobs by Mode
Paper jam location	Doc Server-Total Jobs by Page No.
Machine condition	Doc Server-Total Jobs by File No.
Tray paper size information	Doc Server-Total Jobs by P/O
SC information	Doc Server-Total Prints by Mode
System configuration	PM Alarm Counter (k): Development
Total paper jams counter	FAX: Total Number of Tx
Total original jams counter	FAX: Total Number of Rx
Total jams by location	Main Motor Operation Time (h); SP7-001-1
Total original jams by location	Total SC Counter; SP7-401-001
Total jams by location	SC Counter by type
Total jams by paper size	Charge Bias
Paper jam history	Development Bias
Original jam history	Temperature Humidity: Temperature
Total number of scanning	Environment Charge
Total copy counter	Toner Information: M-Model ID; SP3-925-1
Total FAX counter	Toner Information: C-Model ID; SP3-926-1
Total print counter	Toner Information: Y-Model ID; SP3-927-1
Total development counter	Toner Information: Bk-Model ID; SP3-928-1
Total copies by paper size	PM Parts Counter
Total copies by paper type	Replace Counter
Total copies by paper tray	Process Control Counter; SP7-908-1
ADF Total Counter; SP7-205-1	Process Error Log
Staple Counter; SP7-206-001	Printer: Bit Switch 1
Total Copies by Reproduction Ratio	Printer: Bit Switch 2

1.8 READ AND WRITE ITEMS

The following table shows the major read and write items.

Item	Item
Lead Edge Registration Adjust.: SP1-001	Auto Tray Switching; UP Mode
Side-to-Side Registration Adjust.: SP1-002	A3/DLT Double Count; SP5-104-001
Paper Buckle Adjustment: SP1-003	Margin Adjustment; UP Mode
Charge Bias Adjust.: SP2-001	Add Margin in Repeat Image; UP Mode
Magnification Adjustment: SP2-100	Center Erase Adjustment; UP Mode
Trim Adjustment: SP2-101	1->2 Duplex Auto Margin Adjust.: Front/Rear; UP Mode
Development Bias Adjustment: SP2-201	1->2 Duplex Auto Margin Adjust.: Lead/Tail; UP Mode
Toner End Set; SP2-213-001	Cover Sheet: 2 Sided Mode Setting; UP Mode
Paper Transfer Current Change Position: SP2-322	Disable Copying; SP5-118-001
Charge Cleaning Interval; SP2-801-001	Set Time SP5-302-0011/UP Mode
Environment Control: ON/OFF; SP2-901-001	Auto OFF Set; SP5-305-001
Process Control Interval; SP3-003-001	Auto OFF Timer; SP5-305-002/UP Mode
Environment Change: SP3-004	PM Alarm Level (k); SP5-501-001
Doctor Roller Reverse Rotation Interval: SP3-910	Jam Alarm Level: SP5-504-001
Lubrication Cleaning Time; SP3-920-001	Error (SC) Alarm; SP5-505-001
Scanner Sub Scan Magnification; SP4-008-001	CC Call Setting: CC201 ON/OFF; SP5-508-001
Scanner Side-to-side Registration; SP4-011-001	CC Call Setting: CC101 ON/OFF; SP5-508-002
Paper Tray Priority: Copier; UP Mode	CC Call Setting: CC202 ON/OFF; SP5-508-003
Auto Paper Select Priority; UP Mode	CC Call Setting: CC Call Screening ON/OFF; SP5-508-004
Panel Tone; UP Mode	CC Call Setting: CC201 Interval; SP5-508-011
Magnification Setting: Enlarge; UP Mode	CC Call Setting: CC101 Frequency; SP5-508-012
Copy Count Display; UP Mode	CC Call Setting: CC202 Interval; SP5-508-013
Paper Type: Tray 1; UP Mode	CC Call Setting: CC201 Beeper ON/OFF; SP5-508-021
Paper Type: Tray 2; UP Mode	CC Call Setting: CC101 Manual Call ON/OFF; SP5-508-022
Paper Type: Tray 3; UP Mode	CC Call Setting: CC202 Manual Call ON/OFF; SP5-508-023
Paper Type: Tray 4; UP Mode	Serial Number Setting; SP5-811-001
Paper Type: By-pass Tray; UP Mode	ID2 Setting
Max. Copy Quantity; UP Mode	Service Phone Number Setting; SP5-812-001
System Reset Timer; UP Mode	SADF Auto Reset; UP Mode
Copier Auto Reset Timer; UP Mode	Auto Sort Mode; UP Mode
Panel Off Timer; UP Mode	Staple Position Adjustment; SP6-050-001
Energy Saver Timer; UP Mode	

1.9 EXECUTE ITEMS

Item	Item
Forced Toner Supply: Bk; SP2-208-001	Counters Reset (Except Total Counter); SP7-808-001
Forced Toner Supply: C; SP2-208-002	Copy Counters Reset; SP7-848-001
Forced Toner Supply: M; SP2-208-003	ADF Counter Reset; SP7-811-001
Forced Toner Supply: Y; SP2-208-004	Copy Counter Reset: Tray 1; SP7-816-001
Forced Toner Supply: All Color; SP2-208-005	Copy Counter Reset: Tray 2; SP7-816-002
Charger Cleaning; SP2-802-001	Copy Counter Reset: Tray 3; SP7-816-003
OPC Lubricant Mode; SP2-940-001	Copy Counter Reset: Tray 4; SP7-816-004
Forced Process Control; SP3-001-001	Copy Counter Reset: By-pass; Tray SP7-816-005
Memory All Clear; SP5-801-001	Copy Counter Reset: Duplex; SP7-816-006
SC Reset (Except Level A)	Copy Counter Reset: Magnification; SP7-822-001
PM Counter Reset; SP7-804-001	Copy Counter Reset: Copy Mode; SP7-837-001
SC/Jam Counter Reset; SP7-807-001	Counter Reset: Total Jobs by C/O; SP7-838-001

1.10 JAM HISTORY

The jam history is read as shown below.



B051X903.WMF

1.11 CODE TABLE

1.11.1 JAM CONDITION

Copier

Code	Meaning
01	Jams at power on.
03	Paper non feed (from paper tray 1)
04	Paper non feed (from paper tray 2)
05	Paper non feed (from paper tray 3 or LCT)
06	Paper non feed (from paper tray 4)
07	Paper non feed (from By-pass tray)
08	Paper does not reach the upper paper sensor
09	Paper does not reach the lower paper sensor
0A	Paper does not reach the upper relay sensor
0C	Paper does not reach the registration sensor (from paper tray)
0D	Paper does not reach the registration sensor (from duplex unit)
0E	Paper does not reach the fusing exit sensor
0F	Paper does not reach the interchange exit sensor
10	Paper does not reach the paper exit sensor
11	Paper does not reach the bridge exit sensor
12	Paper does not reach the bridge relay sensor
13	Paper does not reach the duplex entrance sensor (front page)
14	Paper does not reach the duplex entrance sensor (rear page)
17	Paper does not reach the duplex exit sensor
28	Paper does not reach the finisher entrance sensor (for 500-Finisher)
29	Paper does not reach the finisher exit sensor (for 500-Finisher)
3A	Paper caught at the upper paper sensor
3B	Paper caught at the lower paper sensor
3C	Paper caught at the upper relay sensor
3D	Paper caught at the lower relay sensor
3F	Paper caught at the registration sensor.
40	Paper caught at the fusing exit sensor.
41	Paper caught at the interchange exit sensor.
42	Paper caught at the paper exit sensor
43	Paper caught at the bridge exit sensor
44	Paper caught at the bridge relay sensor
45	Paper caught at the duplex entrance sensor (front page)
46	Paper caught at the duplex entrance sensor (rear page)
49	Paper caught at the duplex exit sensor
64	Paper caught at the finisher entrance sensor
65	Paper caught at the finisher exit sensor
67	Paper does not reach the finisher staple tray paper sensor.
68	The finisher stack feed out belt H.P sensor does not turn on.
69	Finisher paper taking out error (for 1000 Finisher)
6B	Finisher drive error
6C	Finisher tray lift error
6D	Finisher jogger drive error
6E	Finisher tray shift drive error

Code	Meaning
6F	Finisher staple error
70	Finisher stack feed-out error
72	Finisher feed out error
73	Finisher no response

Document Feeder

Code	Meaning
01	Jam at power on.
05	Original does not reach the registration sensor.
06	Original does not reach the original exit sensor.
07	Original does not reach the original reverse sensor.
55	Original caught at the registration sensor.
56	Original caught at the original exit sensor.
57	Original caught at the original reverse sensor.

1.11.2 PAPER SIZE

Code	Paper Size	Code	Paper Size
05	A4 sideways	86	A5 lengthwise
06	A5 sideways	87	A6 lengthwise
07	A6 sideways	8D	B4
0E	B5 sideways	8E	B5 lengthwise
0F	B6 sideways	8F	B6 lengthwise
11	Prepaid reply post card sideways	91	Prepaid reply post card lengthwise
12	Post card sideways	92	Post card lengthwise
24	8.5" x 14" sideways	A0	11" x 17"
26	8.5" x 11" sideways	A4	8.5" x 14" lengthwise
2C	8.5" x 5.5" sideways	A6	8.5" x 11" lengthwise
84	A3	AC	8.5" x 5.5" lengthwise
85	A4 lengthwise		

1.12 OTHERS

1.12.1 SC630 [RDS COMMUNICATION ERROR]

Frequent occurrence of SC630 indicates a problem in the customer's communication line or line adapter. To maintain the communications environment in good working order, it is necessary to make planned inspections periodically.

1.12.2 PM PROCEDURE OR OTHER MAINTENANCE

Before beginning PM or other maintenance procedures, SP5816-002 should be set to "Start". This will disable the RSS function. When maintenance is completed, SP5816-002 should be set to "End". This will re-enable the RSS function.

NOTE: The RSS function will remain disabled for four hours. Therefore, if maintenance for longer than four hours is required, SP5816-002 should be set to "Start" again to disable RDS.